

2014

YUKON

GMC | WE ARE PROFESSIONAL GRADE





2014 GMC YUKON. Continuous innovation results from a dedication to engineering Professional Grade vehicles. From the beginning, GMC has been committed to the highest standards of design and engineering—combining refinement, performance and ingenuity to create precision-crafted vehicles that continuously exceed expectations. That's why the 2014 Yukon keeps you comfortably in command with the power and cargo capacity you crave. No compromise necessary. Choose Yukon XL and load up on the most cargo room behind the first, second and third rows in its class. And now GMC's Pro Grade Protection is standard on every 2014 Yukon. Learn more about this enhanced peace of mind on page 18. GMC. We Are Professional Grade.



MODELS

LUXURY IN ALL OF ITS FORMS.

From the moment you open their doors, Yukon Denali and Yukon XL Denali allow you to take on the world with uncompromising comfort and style. Both are designed to bring a higher level of technology, accommodations and luxury to your life as well as to all of your companions. From a one-touch power liftgate to unsurpassed capacity and efficiency, you're about to discover why Yukon Denali is the ultimate expression of Professional Grade.

MODELS

- 2 Denali Overview
- 4 Denali Interior
- 6 SLT Exterior
- 8 SLT Interior

FEATURES & BENEFITS

- 12 Exterior
- 13 Interior
- 14 Powertrain
- 15 Chassis & Suspension
- 16 Technology
- 19 Safety

SELECTION

- 20 Exterior & Interior Colors
- 22 Accessories
- 24 Specifications

YUKON XL DENALI
IN ONYX BLACK (left)

YUKON SLT
IN QUICKSILVER METALLIC (right)

Vehicles shown with available equipment.

YES, YOU CAN HAVE IT ALL. Yukon Denali features a distinctive honeycomb chrome grille, chrome-accented bodyside molding and 20" chrome wheels standard. Yukon XL Denali is even more daring, combining all of the above with a class-leading 137.4 cubic feet of maximum cargo space.¹ Its 6.2L V-8 provides the most horsepower and torque in the Full-Size SUV class. Yet, in true GMC style, we didn't stop there.

¹Cargo and load capacity limited by weight and distribution.



20" CHROME WHEELS All Denali models feature standard 20" 8-spoke chrome-finished cast-aluminum wheels. Their lustrous finish complements the other chrome accents.



REMOTE POWER LIFTGATE Standard on Denali, and available on SLT models, the liftgate opens (and closes) by touching your key fob or the button on the liftgate.



AUTORIDE REAL-TIME DAMPING This system is engineered to sense changes in road surfaces and adjust shock absorbers to eliminate the compromise between a comfortable ride and precise control.



Go to the front of the class for horsepower and torque with Denali, pg. 14.

Increase your pull (and your push) with available all-wheel drive, pg. 15.



YUKON DENALI INTERIOR IN EBONY
shown with available equipment.

Your hands do the driving and your conversation
continues with Bluetooth® for phone, pg. 17.

WELL CONNECTED. Modern lifestyles bring modern challenges, like staying connected while staying in command of your Yukon. To achieve that, Yukon Denali has an integrated system of technologies to keep you in touch, informed and in charge.

*Go to gmtotalconnect.com to find out which phones are compatible with the vehicle.

Enhance your listening pleasure with the Bose®
Centerpoint® Surround Sound System, pg. 17.



YUKON SLT IN QUICKSILVER METALLIC
shown with available equipment.

Four cylinders for efficiency, eight for power, all in the
same engine with Active Fuel Management, pg. 14.



Yukon provides reassuring control with the StabiliTrak stability control system, pg. 15.

Behind every Yukon is confident trailering with Trailer Sway Control and an available Trailer Brake Controller, pg. 15.



ATTENTION GETTER. Driving the Yukon SLT means commanding plenty of attention, power and room to accommodate up to eight travelers in spacious comfort.

YUKON SLT INTERIOR IN EBONY
shown with available equipment.

Even the seats provide all the power you need with
power-adjustable front bucket seats, pg. 13.

SPACE TO ROAM. Yukon has available features you won't find in any competitors, like on SLT and Denali models, the power-release fold-and-tumble second-row seats; on SLE models, seating for up to nine; and, with Yukon XL, up to 137.4 cubic feet of maximum cargo space.¹ With Yukon, every drive is a luxury trip.

¹Cargo and load capacity limited by weight and distribution.

Accommodate up to nine, thanks to Yukon's passenger flexibility, pg. 13.



FEATURES & BENEFITS

PROFESSIONAL GRADE:
A USER'S GUIDE.

Every one of Yukon's components is engineered to a level of excellence we call Professional Grade. The results can be found with Yukon's exterior, interior, technology, handling and safety. What follows are detailed insights into how these features span the entire vehicle—including Pro Grade Protection—to help maintain a premium driving experience.



YUKON DENALI IN WHITE DIAMOND TRICOAT
shown with available equipment.

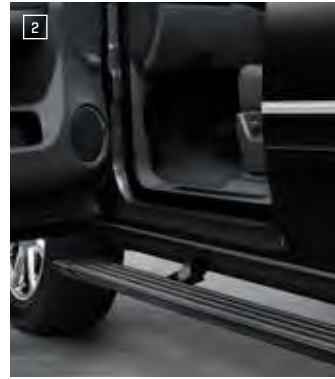


Even the mirrors are capable, thanks to being heated and power-retractable (if equipped), pg. 12.

Take power into your own right hand with Driver Shift Control, pg. 14.

EXTERIOR FEATURES

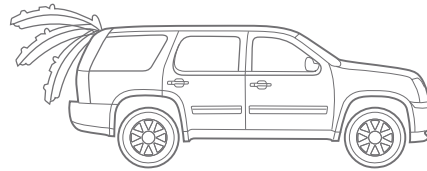
PUSHING THE DESIGN OF YUKON'S EXTERIOR. The bold lines and striking looks are complemented by innovative options such as power-retractable mirrors, power-retractable assist steps and a power-operated liftgate. These options show that when limits are pushed, there's no compromise between convenience and luxury.



1 HEATED POWER-RETRACTABLE MIRRORS Standard on Denali models and available on the SLT, these mirrors are heated to remove snow, frost and fogging and feature integrated turn indicators that signal your intentions to other drivers. The driver-side mirror dims automatically to deflect glares away from your line of sight. Both mirrors fold back for extra clearance in close parking situations or to help prevent damage in automatic car washes.

2 ASSIST STEPS To give you a secure foothold for easy entry, assist steps are standard. Yukon Denali models come standard with steps with chrome inserts. Denali models offer innovative power-retractable assist steps that extend when the door is opened and retract when closed to provide a cleaner profile.

REMOTE POWER LIFTGATE The available power liftgate opens with a touch of your key fob for easier access to your Yukon's impressive cargo capacity. You can close it the same way, or use the switch located on the liftgate itself or on the overhead center console.



3 SIDE BLIND ZONE ALERT¹ Alternating radar beams sweep a zone approximately one lane over from each side of your Yukon Denali. An amber icon in the outside rearview mirror lights if a vehicle is in the blind spot and flashes if you activate the turn signal.
¹Before making a lane change, always check the Side Blind Zone Alert display, check the side and inside rearview mirrors, look over your shoulder for vehicles and hazards and start the turn signal.





YUKON DENALI INTERIOR IN EBONY shown with available equipment.



SEATING CONFIGURATIONS Yukon comes standard with seating for eight, and with an available 40/20/40 front split bench, SLE models can comfortably accommodate up to nine passengers. On SLT models, second-row captain's chairs are also available. Yukon Denali comes standard with second-row captain's chairs, and with an available 60/40 second-row split-folding three-passenger bench seat, it can seat up to eight.

POWER FRONT SEATING All Yukon models come standard with power-adjustable front seats. For the utmost in driver comfort, Denali models come standard with leather-appointed 12-way power heated and cooled front bucket seats with perforated inserts that circulate cooled air between you and the seating surface in warm weather. On all SLT models, in addition to the available leather-appointed 10-way power heated front bucket seats, 10-way power heated and cooled seats are also available for added comfort. SLE models come standard with 6-way power driver and front-passenger seats.

INTERIOR FEATURES

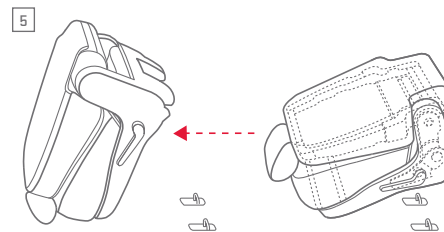
DESIGNING THE DETAILS. Attention to interior details both large and small makes Yukon a refined traveling companion. From the easy access to the third row provided by the available power-release fold-and-tumble second-row seating² to the ultra-soft feel of the optional Nuance leather-appointed seating, Yukon's interior allows you and your passengers to travel in luxurious comfort.

²Not available on SLE.

4 STEERING-WHEEL-MOUNTED RADIO CONTROLS Control your audio system with your fingertips as you keep your hands on the wheel. These controls adjust the radio band, channel selection, volume and muting, as well as manage the functions of your available hands-free phone service through OnStar³ (standard for 6 months) or your mobile Bluetooth[®]-enabled phone.⁴

³Visit onstar.com for coverage map, details and system limitations. ⁴Go to gmtotalconnect.com to see which phones are compatible with the vehicle.

5 POWER-RELEASE FOLD-AND-TUMBLE SECOND-ROW SEATING Power-release fold-and-tumble seats are available for the second-row bench or captain's chairs. Each seat automatically unlatches with the touch of a button and folds and tumbles out of the way for easy access to the third row. (Not available on SLE models.)



POWER-ADJUSTABLE PEDALS To help drivers of varying sizes sit at a comfortable distance from the steering wheel, adjustable pedals are standard. On Denali and SLT-2 models, the pedals also have a memory feature that automatically recognizes your key fob and moves the pedals back to your desired settings.

PREMIUM NUANCE LEATHER-APPOINTED SEATING SURFACES In Yukon Denali models, the ultra-soft feel of Nuance leather-appointed seating surfaces is standard in the first and second passenger rows to give the SUVs with the ultimate in capability the ultimate level of comfort.

TRI-ZONE CLIMATE CONTROL The standard tri-zone climate control creates individual areas for the driver, the front-seat passenger and the rear-compartment passengers. Second-row passengers get their own controls for temperature and fan speed, so drivers can concentrate on the road.

HEATED STEERING WHEEL Standard on Yukon Denali and available on SLT models, a built-in heating system warms the steering wheel rim to give you gloves-off comfort even on the coldest days.

ENGINES & TRANSMISSION

POWERFUL COMBINATION. Yukon's Vortec V-8 VVT engines offer uncompromising power, torque and efficiency. The 5.3L V-8 is tuned to deliver power across a wide rpm range, while the 6.2L V-8 on Denali provides the most horsepower and torque in a full-size SUV. Active Fuel Management, included on both engines, allows Yukon to offer outstanding performance and class-leading fuel economy.¹ Both engines are mated to a 6-speed electronic shifting transmission designed to intelligently transfer power to the road. ¹EPA-estimated 15 city/21 hwy with the 5.3L V-8 engine. Based on 2013 GM Large Utility segment.



6 YUKON ENGINES

VORTEC 5.3L V-8 VVT (LM6)/(LC9) Active Fuel Management/
FlexFuel Capable

HORSEPOWER: 320 hp @ 5400 rpm

TORQUE: 335 lb-ft @ 4000 rpm

VORTEC 6.2L V-8 VVT (L94) Active Fuel Management/
FlexFuel Capable

HORSEPOWER: 403 hp @ 5700 rpm

TORQUE: 417 lb-ft @ 4300 rpm

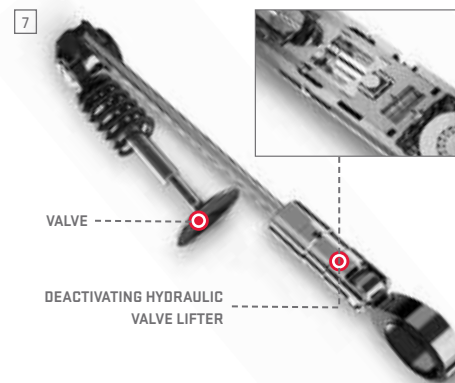
7 ACTIVE FUEL MANAGEMENT (AFM) For maximum fuel efficiency when your load is light, and maximum V-8 power when it isn't, AFM senses load and demand then seamlessly activates or deactivates four of the engine's eight cylinders, using specially designed hydraulic valve lifters. It's innovative technology that results in better fuel economy² than any competitor.

²EPA-estimated 15 city/21 hwy with the 5.3L V-8 engine. Based on 2013 GM Large Utility segment.

E85 FLEXFUEL CAPABILITY³ For more choices at the pump, Yukon's Vortec V-8 engines are capable of running on E85 ethanol. This advanced biofuel is a mostly renewable fuel that burns cleaner than gasoline and helps reduce vehicle emissions, as well as the need for fossil fuels.

³E85 FlexFuel capability is not available in AZ, CA, CT, DE, MA, MD, ME, NJ, NY, OR, PA, RI, VT and WA. E85 is a combination of 85% ethanol and 15% gasoline. Go to afdc.energy.gov/afdc/fuels/ to see if there is an E85 fuel station near you.

8 6-SPEED AUTOMATIC OVERDRIVE TRANSMISSION Engineered for control and confidence in a wide variety of situations, the 6-speed automatic is standard on all Yukon models. It's an ideal partner for Vortec power. Loaded with innovative technology, this transmission can help you bring steep climbs, long grades and heavy loads down to size.



AUTOMATIC GRADE BRAKING Standard with 6-speed automatic transmissions, Grade Braking automatically senses when you want to slow your Yukon, and when conditions are met, engages a shift schedule that helps maintain your desired speed.

TOW/HAUL MODE This feature changes transmission points to reduce shifting while trailering or driving up or down hills.

DRIVER SHIFT CONTROL Standard on all models, it lets you manually move through gear ranges. Move the shift lever to "M," and you get fingertip "tap up/down" control of transmission gear range selection.

VARIABLE VALVE TIMING (VVT) Giving you maximum power over the widest range of engine speeds, VVT changes the engine's performance profile to match the driving situation. In the city, VVT gives you a smooth idle and quick response at low speeds. On the highway, VVT changes your engine to a bold, high-performance V-8 with horsepower to spare.



CHASSIS & SUSPENSION

CONSIDER IT HANDLED. Yukon's strong frame and rigid body structure keep road harshness out while preserving responsiveness. All models feature a fully independent front suspension and multilink rear suspension coupled with advanced technology like StabiliTrak, antilock brakes, traction control and available rear level control.

REAR MULTILINK SUSPENSION Giving you a smooth, refined ride in a variety of road conditions, Yukon features a five-link coil-spring rear suspension.

ALL-WHEEL DRIVE Available all-wheel drive on Denali models transfers power to all four wheels all the time. It's always activated, so you don't have to fuss with controls to enjoy the benefits of improved control.

AUTORIDE REAL-TIME DAMPING Engineered to eliminate the compromise between a comfortable ride and precise control, the available AutoRide System senses changes in the road and adjusts shock absorbers as you drive.

REAR LEVEL CONTROL This system is included with the available AutoRide System to constantly sense and adjust rear suspension height for a level ride height under varying load or passenger conditions. Available on SLT and standard on Denali, the system uses an onboard compressor to make sure Yukon is level.

STABILITRAK STABILITY CONTROL SYSTEM The system helps you stay on the path you're steering in bad weather or on uneven roads. It senses when Yukon is not responding to steering inputs, then adjusts engine speed and braking pressure at any individual wheel to help maintain directional control.

TRAILER SWAY CONTROL Keep both you and your trailer heading in the proper direction, automatically. This system uses StabiliTrak sensors to detect the rocking of a swaying trailer, applying the vehicle's brakes and the trailer brakes (if properly equipped) to bring it back in line.

TRACTION CONTROL SYSTEM To make the most of available traction on many road surfaces, traction control measures and compares wheel speed. If it senses one or more wheels starting to spin, like on a slippery surface, the system applies individual brakes and manages engine power to slow the wheel and maintain traction so you can move forward with a better sense of control.



FULLY INDEPENDENT FRONT SUSPENSION The independent front suspension in Yukon uses a strong and compact coil-over-shock system for a tight turn radius and a smooth ride.

EATON® HEAVY-DUTY AUTOMATIC LOCKING REAR DIFFERENTIAL No other class competitor offers an automatic locking rear differential for use on-road or off. When the Eaton locker senses a difference in rotational speed between left and right rear wheels of approximately 100 rpm, it locks the differential to turn both wheels in unison for enhanced traction.

HILL START ASSIST To help you hold your place when parked on an incline, Hill Start senses potential "rollback" and then holds full brake pressure when you lift your foot from the pedal. You gain extra time to apply power and drive off.

INTELLIGENT BRAKE ASSIST In an abrupt stop, milliseconds can be your margin of safety. Intelligent Brake Assist senses when you apply the brake abruptly, increasing braking force so there's no need to push the pedal all the way for improved reaction time in panic situations.

POWER RACK-AND-PINION STEERING Standard on all Yukon models, it provides a positive, on-center feel at highway speeds, as well as extra low-speed assist for tight maneuvering.

TRAILER BRAKE CONTROLLER For fingertip control and easy monitoring of your trailer brakes, Yukon offers an available integrated trailer brake controller. It's located close to the steering wheel for easy adjustments and displays the level of brake force or "gain" in the Driver Information Center.

ANTILOCK BRAKING SYSTEM (ABS) For confident stops in a variety of conditions, Yukon features four-channel antilock brakes. When the brakes are applied, ABS detects impending wheel lock-up, pulsing that wheel's brake to prevent it. This four-channel system activates any combination of brakes to maintain control.



TECHNOLOGY

STAY IN TOUCH. Yukon's center console keeps you connected. The available Touch-Screen Navigation¹ System helps keep you entertained and informed.

Rear-seat entertainment options offer passengers in the back controls to personalize and enjoy their ride. Auxiliary input, Bluetooth,² a 3-month trial of SiriusXM

Satellite Radio³ and Bose[®] audio systems ensure every song and conversation sounds like you're in the same room—a spacious, acoustically sound room.

¹Map coverage for Puerto Rico and the Virgin Islands available on separate disc. Coverage not available for portions of Canada. ²Go to gmttotalconnect.com to see which phones are compatible with the vehicle. ³If you subscribe after your trial period, *subscriptions are continuous until you call SiriusXM to cancel*. See SiriusXM Customer Agreement for complete terms at siriusxm.com. Other fees and taxes will apply. All fees and programming subject to change. XM satellite service is available only to those in the 48 contiguous USA and DC.

AUXILIARY INPUT CAPABILITY Bring the music and entertainment you love to your Yukon just by plugging in a 3.5-mm auxiliary cable. Accommodates most MP3 players and devices, including iPod® and many smartphones.

MOBILE WI-FI⁴ (Dealer-Installed) Connect up to 20 wireless users at once and stay in touch with the first wireless router designed for automotive use. Autonet Wi-Fi allows any combination of laptops, phones or other Wi-Fi-enabled devices to connect to the Internet, wherever you are. Various applications are also available. Ask your dealer for specific plans and prices.

⁴Monthly rates apply. Visit autonetmobile.com for coverage map and details.

BLUETOOTH FOR PHONE⁵ Extend your capabilities by activating Bluetooth on your phone, then by turning the key you can automatically continue the conversation over the built-in hands-free phone system.

⁵Go to gmttotalconnect.com to see which phones are compatible with the vehicle.

9 TOUCH-SCREEN NAVIGATION⁶ For easy operation, the available system includes a large 7" diagonal in-dash touch-screen, 2-D or 3-D map graphics and 3 months of NavTraffic.⁷ OnStar⁸ subscribers can also use this system with OnStar Turn-by-Turn Navigation assistance (standard for 6 months). Features include an available XMWeather subscription and improved display resolution for enhanced visibility and viewing.

⁶Map coverage for Puerto Rico and the Virgin Islands available on separate disc. Coverage not available for portions of Canada. ⁷If you subscribe after your trial period, *subscriptions are continuous until you call SiriusXM to cancel.* See SiriusXM Customer Agreement for complete terms at siriusxm.com. Other fees and taxes will apply. All fees and programming subject to change. For more information about NavTraffic, visit siriusxm.com/navtraffic. XM satellite service is available only to those in the 48 contiguous USA and DC. ⁸Visit onstar.com for coverage map, details and system limitations.

10 SIRIUSXM SATELLITE RADIO⁹ Enjoy SiriusXM Satellite Radio with a 3-month trial subscription to the XMPremier Package. Get over 140 channels, including commercial-free music plus the best sports, news, talk, comedy and entertainment. With NavTraffic, you'll get continuously updated traffic as it occurs, right on your vehicle's available navigation system.

⁹If you subscribe after your trial period, *subscriptions are continuous until you call SiriusXM to cancel.* See SiriusXM Customer Agreement for complete terms at siriusxm.com. Other fees and taxes will apply. All fees and programming subject to change. For more information about NavTraffic, visit siriusxm.com/navtraffic. XM satellite service is available only to those in the 48 contiguous USA and DC.

11 REAR-VISION CAMERA SYSTEM Make it easier to back up to a trailer or negotiate a tight space. This standard system places a monitor in your rearview mirror or navigation screen (if equipped) to display a view of the area behind the vehicle. The Rear-Vision Camera System does not replace driver vision. Please use proper care when backing up.

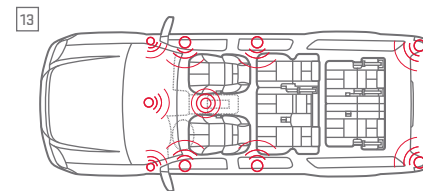
12 REAR-SEAT ENTERTAINMENT SYSTEM Rear-seat passengers should enjoy the ride, too. This available system includes a DVD player and 8" diagonal flip-down screen. It also comes with dual-play, which has a separate upper DVD slot in the radio to let front-seat passengers control the DVD or music playing behind them. Yukon XL and Denali XL models feature two screens, with one screen specifically for the third-row passengers. It's compatible with most popular video gaming systems.

BOSE AUDIO SYSTEMS Make the front seat of your Yukon sound like the front row of your favorite concert. Bose systems provide the realism and presence of a live performance. Standard on SLE and SLT, Bose audio features a premium speaker system with a center console-mounted woofer for rich bass tones for a fuller listening experience.

13 BOSE CENTERPOINT® SURROUND SOUND For the sensation of a live performance while you drive, Denali models feature a Bose Centerpoint 10-speaker surround sound system with SurroundStage® signal processing. This technology, along with AudioPilot® noise compensation, wraps you in sound, delivering five independent channels from existing two-channel recordings.

14 REMOTE VEHICLE START Start and run your Yukon for up to 10 minutes from up to 195 feet away. If your Yukon is equipped with automatic climate control, it will default to heating or cooling mode based on the outside temperature.

ULTRASONIC REAR PARK ASSIST This feature sends out ultrasonic waves to alert you to certain stationary objects up to 8 feet behind the vehicle. Standard on all Yukon models, the system operates at 5 mph or less. The closer you are to an object, the faster it beeps, giving you a clear signal that can help operate the vehicle with maximum care.



UNIVERSAL HOME REMOTE This available remote can be easily programmed to operate the majority of garage-door-opening systems and has the added benefit of never needing batteries.

ONSTAR VEHICLE DIAGNOSTICS¹⁰ (OVD) OnStar Vehicle Diagnostics is standard with your 6-month trial subscription to the Directions & Connections Plan and runs hundreds of checks of your Yukon's engine, transmission, antilock brakes and more, then organizes the information in an easy-to-read monthly e-mail report. OnStar can also run a check of your vehicle as you drive.

¹⁰Capabilities vary by model. Visit onstar.com for details and system limitations.



USB CONNECTIVITY Plug into the USB port,¹¹ and you can control most of your iPod® or MP3 music player's functions, including playlists and song selection, from your available steering-wheel-mounted radio controls.

¹¹Not compatible with all devices.

ONSTAR FEATURES

CONFIDENCE THROUGH TECHNOLOGY. Standard for 6

months, the OnStar Directions & Connections Plan¹ lets you speak to a live

OnStar Advisor just by pressing the blue OnStar button on your rearview mirror.

SAFETY

AUTOMATIC CRASH RESPONSE² In many crashes, built-in sensors can automatically alert an OnStar Advisor, who is immediately connected to your vehicle to see if you need help sent to your exact location—even if you can't respond.

CRISIS ASSIST During severe weather or other crisis situations, OnStar offers assistance to help you connect with loved ones and navigate your way to safety.

EMERGENCY SERVICES If someone in your Yukon needs emergency help, the OnStar emergency button gives you a priority connection to a specially trained Advisor at any time, day or night.

ROADSIDE ASSISTANCE³ If you're stranded, run out of gas or have a flat tire—one push of the OnStar button can immediately connect you to an Advisor, ready to help any hour of the day or night.

REMOTE DOOR UNLOCK⁴ If you get locked out of your Yukon, OnStar can help. An OnStar Advisor can send a signal to your Yukon that usually unlocks the doors within minutes.

STOLEN VEHICLE ASSISTANCE⁴ If your Yukon is ever stolen, OnStar can help locate it after verification with law enforcement.

CONNECTIONS

HANDS-FREE CALLING⁵ With voice-activated dialing, available OnStar Hands-Free Calling is built into your Yukon. Push the voice command button, call out the number and you're free to keep your eyes on the road.

TURN-BY-TURN NAVIGATION OnStar Turn-By-Turn Navigation is simple—all you have to do is push your blue OnStar button and ask the OnStar Advisor to download directions to your Yukon.

ONSTAR eNAV WITH MAPQUEST.COM™ Get a head start on a trip by checking out your destination on mapquest.com. With OnStar eNav, just click the "Send" link on the Web site, and directions will be sent to your vehicle.

DESTINATION DOWNLOAD With the optional Navigation System, simply press your blue OnStar button, and a trained Advisor will download directions to your Yukon's navigation screen.

ONSTAR REMOTELINK⁶ KEY FOB SERVICES⁷ Unlock. Start. Find. From anywhere. New this year, OnStar RemoteLink Key Fob Services are included for 5 years on OnStar-equipped 2014 vehicles when you download the app and use RemoteLink services during the 6-month trial period and any consecutive periods with an OnStar plan. Services include remote door unlock and lock, remote start and stop (requires factory-installed remote start) and remote horn and lights.

GMC PRO GRADE PROTECTION

PROFESSIONAL GRADE COVERAGE.

Pro Grade Protection is now standard on every 2014

Yukon. From scheduled maintenance to protecting the entire vehicle and the powertrain in between, you

can drive with confidence knowing that Professional

Grade doesn't simply describe your Yukon's design and

engineering, it's how well we protect it, too.

▼
**2-YEAR/24,000-MILE RECOMMENDED
SCHEDULED MAINTENANCE⁸**

▼
**3-YEAR/36,000-MILE BUMPER-TO-BUMPER
LIMITED WARRANTY⁹**

▼
**5-YEAR/100,000-MILE POWERTRAIN
LIMITED WARRANTY⁹**

¹Visit onstar.com for coverage map, details and system limitations. ²OnStar acts as a link to existing emergency service providers. Not all vehicles may transmit all crash data. ³Roadside service provided by Allstate Roadside Services. ⁴Services vary by model and conditions. ⁵Visit onstar.com for coverage map, details and system limitations. OnStar Hands-Free Calling requires existing OnStar service contract and prepaid minutes. Not available in certain markets. Calls can be made in U.S. and Canada only. ⁶Available on select Apple®, Android™ and BlackBerry® devices. Services vary by device, vehicle and conditions. Requires an active OnStar subscription. ⁷Access is available for 5 years from the date of vehicle delivery and is transferable. Does not include any emergency services or other OnStar services. To cancel OnStar RemoteLink Key Fob Services or if your vehicle is sold, it is important to contact an OnStar Advisor. See onstar.com/mobile for full details. ⁸Covers only scheduled oil changes with filter, tire rotations and 27-point inspections, according to your new vehicle's recommended maintenance schedule for up to 2 years or 24,000 miles, whichever comes first. Does not include air filters. Maximum of 4 service events. See participating dealer for other restrictions and complete details. ⁹Whichever comes first. See dealer for limited warranty details.

SAFETY

CONFIDENCE BUILDER. The 2013 Yukon received 5-Star Overall Frontal Crash and 5-Star Overall Side Crash Safety ratings.¹⁰ With head curtain side-impact air bags¹¹ reaching from the front to the third row of seating for outboard passengers, Yukon is engineered to help protect passengers regardless of where they're seated. Antilock brakes, tire pressure monitoring and the StabiliTrak stability control system help enhance your safety during every trip.

¹⁰Government 5-Star Safety Ratings are part of the National Highway Traffic Safety Administration's (NHTSA's) New Car Assessment Program (safercar.gov). ¹¹Air bag inflation can cause severe injury or death to anyone too close to the air bag when it deploys. Be sure every occupant is properly restrained. Always use safety belts and the correct restraint for your child's age and size, even with air bags. Even in vehicles equipped with the Passenger Sensing System, children are safer when properly secured in a rear seat in the appropriate infant, child or booster seat. Never place a rear-facing infant restraint in the front seat of any vehicle equipped with an active frontal air bag. See your vehicle Owner's Manual and child safety seat instructions for more safety information.

15 SAFETY CAGE CONSTRUCTION Yukon's safety cage, consisting of reinforcements in the A-pillar, roof rail and bracing under the driver and passenger floor area, helps maintain the integrity of the passenger compartment in the event of a collision.

16 PASSENGER COMPARTMENT AIR BAGS¹² Yukon's passenger compartment is equipped with six air bags to reduce your injury risk. Dual-stage frontal air bags use sensors to gauge crash severity, determining whether to deploy one or two levels of inflation. A Passenger Sensing System automatically disables the passenger air bag if the passenger is under the appropriate weight. Side-impact air bags provide thorax and pelvic protection for outboard front-seat occupants. Standard head curtain side-impact air bags, located in the ceiling above the side windows, are designed to protect the first-, second- and third-row outboard passengers in the event of a side-impact or rollover collision.

¹²Air bag inflation can cause severe injury or death to anyone too close to the air bag when it deploys.

LATCH CHILD SEAT ANCHORING SYSTEM LATCH (Lower Anchors and Top tethers for CHildren) equipped child seats install to specially designed retainer hooks. LATCH also enables the attachment of a child seat top tether strap that helps limit movement in a forward crash, helping reduce the chance of injury.

PASS-KEY III THEFT DETERRENT SYSTEM A tiny chip in your ignition key prevents unauthorized starting. It functions as an electronic "fingerprint" to disable your starting system if it detects a theft is under way.

SIDE BLIND ZONE ALERT¹³ This feature alerts you to other vehicles in your Yukon's blind zones. It's standard on Denali and available on SLT. Alternating radar beams sweep adjacent traffic lanes, covering a zone approximately one lane over from each side of the vehicle. A dedicated amber icon next to the outside rearview mirror's turn-signal display lights up any time there is a vehicle in your blind spot and flashes when the turn signal is activated.

¹³Before making a lane change, always check the Side Blind Zone Alert display, check the side and inside rearview mirrors, look over your shoulder for vehicles and hazards and start the turn signal.

TIRE PRESSURE MONITORING SYSTEM Properly inflated tires are important to your comfort, vehicle control and fuel economy. This system uses tiny sensors inside the wheel to "broadcast" tire pressure to your vehicle,¹⁴ alerting you to their status and inflation level through the Driver Information Center. If you subscribe to OnStar Vehicle Diagnostics, this information is part of their monthly e-mail update, or if you have the OnStar RemoteLink app, you can check the status.

¹⁴Does not monitor spare tire.





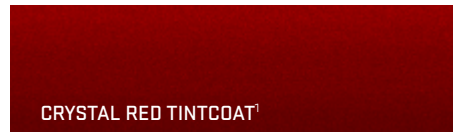
EXTERIOR COLORS



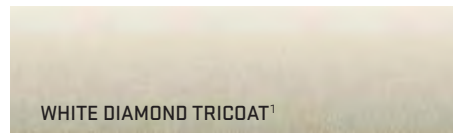
ONYX BLACK



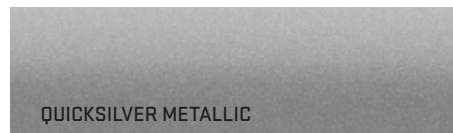
SUMMIT WHITE



CRYSTAL RED TINTCOAT¹



WHITE DIAMOND TRICOAT¹



QUICKSILVER METALLIC



DEEP INDIGO METALLIC²



CHAMPAGNE SILVER METALLIC



MOCHA STEEL METALLIC

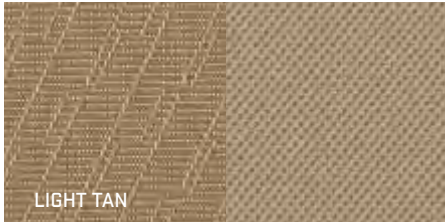
SELECTION

WHAT YOUR YUKON IS MADE OF. To make sure Yukon pulls into your garage exactly the way you want it, this is your opportunity to make several important selections. You'll find numerous exterior, interior, entertainment, performance and accessory options. Build your Yukon to reflect your particular color, premium material, accessories and feature preferences. In other words, make your Yukon truly yours.

All colors are basecoat/clearcoat for high gloss and durable finish. See dealer for more details on paint and color availability. ¹Extra-cost color. ²Late availability.

INTERIOR COLORS

PREMIUM CLOTH
(Standard: SLE)



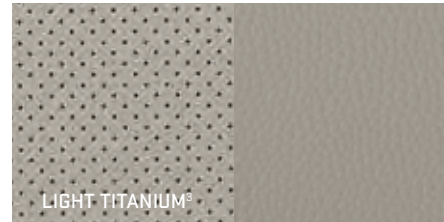
LEATHER-APPOINTED
(Standard: SLT)



PERFORATED LEATHER-APPOINTED
(Standard: Denali; Available: SLT)



²Light Tan on SLT. ³Not available on Denali.



WHEELS

YUKON



N88 17" POLISHED ALUMINUM
STANDARD: SLE AND SLT



RDP 20" POLISHED ALUMINUM
AVAILABLE: SLE AND SLT



S86 20" CHROME-CLAD ALUMINUM
AVAILABLE: SLE AND SLT

YUKON DENALI



P41 20" CHROME WHEEL
STANDARD: YUKON DENALI AND YUKON XL DENALI

ACCESSORIES

ALL DRESSED UP. GMC Accessories are engineered and tested to meet the standards of your Yukon. Available individually or as part of a package, they are the easiest way to customize your Yukon while still keeping it Professional Grade. Personalizing your Yukon is easy; just ask your dealer.

1 CHROME ASSIST STEPS Make it easier to get in and out of your Yukon with these stylish assist steps. Crafted from rust-resistant stainless steel, they come as 6" oval chrome steps.

2 TRAILER HITCH CLOSEOUT This custom-molded cover hides the trailer hitch receiver when not in use. Available in select body colors. Not available for Yukon Denali or Yukon XL Denali.

3 CHROME GRILLE Specifically designed and engineered for your vehicle, this stylish grille has a chrome surround and features the GMC logo.

4 CHROME MIRROR COVERS Help your Yukon make even more of a fashion statement with these chrome outside rearview mirror covers. Set of 2.



5 ROOF RACK CROSS RAIL PACKAGE These cross rails add function and style to the factory roof rack of your Yukon. The cross rails are the base mount for cargo management accessories.

6 CHROME DOOR HANDLES Add personality to the exterior of your Yukon with these stylish chrome door handles. Like the full array of chrome accessories, they help your Yukon stand apart from everything else on the road.

7 CHROME RECOVERY HOOKS Add functionality and enhance the appearance of your Yukon. These front hooks are for vehicle recovery only. To avoid the risk of injury, never use recovery hooks to tow a vehicle. For more information, see the Recovery Hooks section of your GMC Owner's Manual.





ACCESSORY WHEELS¹

ROLL WITH THE BEST. These custom wheels feature a brilliant, durable chrome or two-tone black gloss and polished finish, and are available with matching lugs and GMC center caps.



CK370 20"
CHROME (VZK)



CK948 20"
CHROME (VSB)



CK910 22"
CHROME (SES)



CK916 22"
CHROME (VSK)



CK366 22"
CHROME (VS4)

¹Use only GM-approved tire and wheel combinations. Unapproved combinations may change the vehicle's performance characteristics. For approved tire and wheel combinations and other important information, go to gmaccessorieszone.com or see your dealer for details.

VEHICLE SPECIFICATIONS

SLE
SLT
DENALI

TRIM LEVELS

MECHANICAL	SLE	SLT	DENALI
ALTERNATOR 160-amp	●	●	●
BATTERY Heavy-duty maintenance-free with 730 cold-cranking amps and rundown protection	●	●	●
BRAKES 4-wheel Antilock Brake System (ABS), 4-wheel disc	●	●	●
DRIVETRAIN 2WD	●	●	●
4WD, Single-speed active transfer case.	●	●	–
4WD, Active 2-speed transfer case with rotary controls. Included with Heavy-Duty Trailing Package.	○	○	–
All-Wheel Drive (AWD). Electronic automatic system; includes AWD transfer case.	–	–	○
ENGINES Vortec 5.3L V-8 VVT FlexFuel with Active Fuel Management, E85 capable	●	●	–
Vortec 6.2L V-8 VVT with Active Fuel Management, E85 capable	–	–	●
ENGINE BLOCK HEATER	○	○	○
EXTERNAL ENGINE OIL COOLER Heavy-duty air-to-oil, integral to radiator. Requires Heavy-Duty Trailing Package.	○	○	●
HEAVY-DUTY AUTOMATIC LOCKING REAR DIFFERENTIAL	●	●	●
STABILITRAK Stability control system and traction control. Includes trailer sway control and Hill Start Assist.	●	●	●
STEERING Power	●	●	●
SUSPENSION Front independent coil-over-shock with stabilizer bar	●	●	●
Rear multilink with coil springs	●	●	●
Automatic Rear Level Control, air	–	○	●
Premium Smooth Ride Suspension	●	●	–
AutoRide Suspension Package. Bi-state variable shock dampening and rear air-assisted load-leveling, includes automatic air-level control.	–	○	●
Z71 Off-Road Suspension Package. Available only on Yukon SLE and SLT 4WD and XL 4WD models. Includes Skid Plate Package, P265/70R17 on-/off-road blackwall tires and high-capacity air cleaner on all models. Not available with SLT Chrome Package.	○	○	–
TRAILERING Trailer Brake Controller, integrated. On SLE and SLT, requires Heavy-Duty Trailing Package.	○	○	○
Trailing Equipment. Includes hitch platform with 2" trailing receiver and 7-wire harness with independent fused trailing circuits mated to a 7-way sealed connector.	●	●	●
TRANSMISSION 6-speed automatic, heavy-duty, electronically controlled with overdrive, Tow/Haul mode, Electronic Engine Grade Braking and tap-up/tap-down shifting	●	●	●

PACKAGES

HEAVY-DUTY TRAILERING PACKAGE Includes auxiliary external transmission oil cooler, external engine oil cooler, power steering cooler and increased-capacity radiator and cooling fans. Includes 3.42 rear axle ratio. Includes 2-speed AutoTrac on 4WD models.	○	○	●
REGIONAL VALUE PACKAGE Includes outside heated power-adjustable, power-folding and driver-side auto-dimming mirrors, 1 year of SiriusXM Satellite Radio service, ¹ 20" polished aluminum wheels, Heavy-Duty Trailing Package, chrome door handles, chrome mirror caps, polished exhaust tip (dealer installed), chrome recovery hooks and chrome grille (dealer installed). Not available with Sun, Entertainment & Destination Package or 20" chrome-clad wheels.	–	○	–
SKID PLATE PACKAGE Includes front underbody shield. Requires 4WD models and Z71 Off-Road Suspension Package.	○	○	–
SLT CHROME PACKAGE Includes chrome door handles, chrome mirror caps, polished exhaust tip, chrome recovery hooks, chrome grille, outside heated power-adjustable, power-folding and driver-side auto-dimming body-color mirrors and 20" polished aluminum wheels. Not available with Z71 Off-Road Suspension Package.	–	○	–
SLT-2 EQUIPMENT PACKAGE Includes 10-way power leather-appointed heated front bucket seats, heated second-row seats, second-row power seat release, rear power liftgate and outside heated power-adjustable, power-folding mirrors with memory feature. Includes heated, leather-wrapped steering wheel.	–	○	–
SUN, ENTERTAINMENT & DESTINATION PACKAGE Includes 1 year of SiriusXM Radio ¹ and NavTraffic service, power sunroof, inside rearview auto-dimming mirror, audio system with navigation and Rear-Seat Entertainment System. On SLT models, not available with AM/FM stereo with CD player and MP3 playback, or audio system with Rear-Seat Entertainment System.	–	○	○
TEXAS EDITION Includes Regional Value Package features plus Texas Edition badge	–	○	–

TRIM LEVELS

SEATING	SLE	SLT	DENALI
SEATS 40/20/40 front split bench, 3-passenger with Premium Cloth. Includes 6-way power driver-seat adjuster, driver and front-passenger manual reclining, center fold-down armrest with storage, lockable storage compartments in seat cushion (includes auxiliary power outlet), outboard adjustable head restraints and storage pockets.	○	–	–
Front buckets. Includes 6-way power driver and passenger seat adjuster, outboard adjustable head restraints, floor console and rear storage pockets. Premium Cloth on SLE models. Leather-appointed first and second row with heated front seat cushion and seatbacks on SLT.	●	●	–
Leather-appointed seats in the first and second rows. Includes front bucket seats with 10-way power driver and front-passenger seat adjusters, including power lumbar control, heated seat cushion and seatbacks, 2-position driver memory, adjustable head restraints, storage pockets and floor console. Requires SLT-2 Equipment Package.	–	○	–
Heated and cooled perforated leather-appointed seats on first row and heated perforated leather-appointed seats on second row. Includes front bucket seats with 10-way power driver and front-passenger seat adjusters (12-way on Denali models), including power lumbar control, heated and cooled seat cushions and seatbacks, 2-position driver memory, adjustable head restraints, storage pockets and floor console. SLT models require SLT-2 Equipment Package.	–	○	●
60/40 second-row split-folding 3-passenger bench in Premium Cloth, with center armrest and storage tray	●	–	–
60/40 second-row split-folding 3-passenger leather-appointed bench with center armrest and storage tray	–	●	○
Leather-appointed second-row reclining captain's chairs	–	○	●
Heated second-row seat cushions. On bench seating, outboard positions only.	–	○	●
Fold-and-tumble power second-row seat release for captain's chairs or bench seat. Requires front bucket seats with leather-appointed seating surfaces.	–	○	●
50/50 third-row split-bench seats, 3-passenger, removable, all belts-to-seat	●	●	●

INSTRUMENTATION AND CONTROLS

INSTRUMENTATION Analog cluster with speedometer, odometer/trip odometer, fuel level, voltmeter, engine temperature, oil pressure and tachometer. Driver Information Center including temperature and compass.	●	●	●
POWER-ADJUSTABLE PEDALS	●	●	●
REAR-VISION CAMERA SYSTEM With auto-dimming inside rearview mirror display	●	●	–
With NAV-screen display. Requires Touch-Screen Navigation.	–	○	●
STEERING WHEEL Leather-wrapped, with controls for audio, cruise control and Bluetooth®-enabled ² phone, plus tilt-adjustable column with brake/transmission shift interlock. Deluxe leather-wrapped with power-tilt on Denali.	●	●	●
Heated steering wheel	–	○	●
TOW/HAUL MODE SELECTOR	●	●	●
ULTRASONIC REAR PARK ASSIST With audible warning	●	●	●

VEHICLE SPECIFICATIONS

SLE
SLT
DENALI

TRIM LEVELS

INTERIOR DETAILS AND CONVENIENCE FEATURES

CARPET Color-keyed with removable carpeted floor mats for first and second rows	●	●	●
CLIMATE CONTROL Tri-zone manual air conditioning. Available on SLE models with bench seat.	○	–	–
Tri-zone automatic air conditioning, includes individual climate settings for driver and right-front passenger. On SLE, not available with optional 40/20/40 front split-bench seating.	●	●	●
Rear auxiliary heater and air conditioner with rear-passenger heating and air ducts	●	●	●
Defogger, rear-window electric	●	●	●
CONSOLES Overhead mini with map lights	●	●	●
Floor with storage area, cupholders and integrated second-row audio and HVAC controls. Included and only available with front bucket seats.	●	●	●
Storage bin behind driver-side rear quarter panel	●	●	●
CUPHOLDERS Front seating area, rear floor console, third-row outboard side trim	●	●	●
MIRROR Auto-dimming rearview	●	●	●
OUTLETS 12-volt power, 5 (3 with bench seat)	●	●	●
PADDED VISORS AND ARMRESTS	●	●	●
POWER PROGRAMMABLE DOOR LOCKS	●	●	●
POWER WINDOWS With driver express-down and lockout protection	●	●	●
REMOTE STARTER SYSTEM With keyless entry	●	●	●
SUNROOF Power, tilt-sliding with express-open and -close and wind deflector. On SLE, not available with optional 40/20/40 front split-bench seating.	○	○	○
UNIVERSAL HOME REMOTE Includes programmable garage-door opener	–	●	●

ENTERTAINMENT/COMMUNICATION/NAVIGATION

AUDIO SYSTEM AM/FM stereo with CD player and MP3 playback, seek-and-scan, digital clock, auto-tone control, Radio Data System (RDS), ³ speed-compensated volume, TheftLock, auxiliary input jack and USB port ⁴	●	●	–
TOUCH-SCREEN NAVIGATION ⁵ AM/FM/SiriusXM ¹ (3 trial months) stereo with CD/DVD player and MP3/WMA playback, color touch-screen display, enhanced HDD-based navigation with voice recognition, hard drive with memory available for music storage, USB port, ⁴ RDS ³ and pause/play radio	–	○	●
REAR-SEAT ENTERTAINMENT SYSTEM Includes DVD player with remote control, overhead display, 2 sets of 2-channel wireless infrared headphones and auxiliary audio/video input jacks. On SLE, not available with optional 40/20/40 split-bench front seats.	○	○	○
REAR AUDIO SYSTEM CONTROLS With 2 headphone jacks (headphones not included), power outlet and controls for volume, station selection and media	●	●	●
AUDIO 6-speaker system included with bench seat	○	–	–
9-speaker Bose® sound system with subwoofer in center console. Not available with optional front bench seat.	●	●	–
10-speaker Bose Centerpoint® surround sound system	–	–	●
DUAL-SCREEN ENTERTAINMENT SYSTEM Adds second screen for third-row passengers. Includes 2 additional sets of headphones. Included and only available with Rear-Seat Entertainment System. Available on XL models only.	–	○	○
ONSTAR 6 months of Directions & Connections Plan ⁶	●	●	●
SiriusXM SATELLITE RADIO ¹ 3 trial months included	●	●	●
NAVTRAFFIC ¹ 3 trial months included. Included and only available with Touch-Screen Navigation.	–	○	●
BLUETOOTH FOR PHONE ² Personal cell-phone connectivity	●	●	●

TRIM LEVELS

EXTERIOR STYLING AND FUNCTIONALITY

ASSIST STEPS Black	●	●	–
Black with chrome inserts	–	–	●
Power-retractable	–	–	○
GLASS Solar-Ray deep-tinted. All windows except light-tinted glass on windshield and driver- and front-passenger-side glass.	●	●	●
LIGHTS Dual halogen composite headlamps with automatic exterior lamp control and flash-to-pass	●	●	●
Halogen front fog lamps, round	●	●	●
LUGGAGE RACK Roof-mounted side rails, black; body-color with bright accent on Yukon Denali	●	●	●
LUGGAGE RACK CENTER RAILS	●	●	●
OUTSIDE MIRRORS Heated, power-adjustable, manual-folding, body-color	●	●	–
Heated power-folding, power-adjustable, driver-side auto-dimming, body-color mirrors with integrated turn-signal indicators, ground illumination and curb-tilt. On SLT models, requires SLT-2 Equipment Package.	–	○	●
POWER LIFTGATE On SLT models, requires SLT-2 Equipment Package	–	○	●
RECOVERY HOOKS 2 front, frame-mounted	●	●	●
WIPERS Front intermittent wet-arm with flat blade and pulse washers	●	●	●
Rear intermittent with washer	●	●	●

SAFETY AND SECURITY

AIR BAGS ⁷ Dual-stage frontal with Passenger Sensing System	●	●	●
Front and rear head curtain side-impact air bags for all outboard seating positions with rollover sensor	●	●	●
Front-seat-mounted side-impact driver and right front-passenger air bags for thorax and pelvis protection	●	●	●
SIDE BLIND ZONE ALERT On SLT models, requires SLT-2 Equipment Package	–	○	●
TIRE PRESSURE MONITORING SYSTEM Does not monitor spare	●	●	●
VEHICLE THEFT-DETERRENT SYSTEM PASS-Key III	●	●	●

¹If you subscribe after your trial period, *subscriptions are continuous until you call SiriusXM to cancel.* See SiriusXM Customer Agreement for complete terms at siriusxm.com. Other fees and taxes will apply. All fees and programming subject to change. For more information about NavTraffic, visit siriusxm.com/navtraffic. For more information about Travel Link, visit siriusxm.com/travellink. XM satellite service is available only to those in the 48 contiguous USA and DC. ²Go to gmtotalconnect.com to find out which phones are compatible with the vehicle. ³RDS functions only where stations broadcast RDS information. ⁴Not compatible with all devices. ⁵Map coverage for Puerto Rico and the Virgin Islands available on separate disc. Coverage not available for portions of Canada. ⁶Visit onstar.com for details and system limitations. ⁷Always use safety belts and the correct restraint for your child's age and size, even with air bags. Even in vehicles equipped with the Passenger Sensing System, children are safer when properly secured in a rear seat in the appropriate infant, child or booster seat. Never place a rear-facing infant restraint in the front seat of any vehicle equipped with a passenger air bag. See your vehicle Owner's Manual and child safety seat instructions for more safety information.

VEHICLE SPECIFICATIONS

YUKON/YUKON XL/YUKON DENALI/YUKON XL DENALI ENGINE SPECIFICATIONS

	LMG	LC9	L94
ENGINE	VORTEC 5.3L V-8 VVT	VORTEC 5.3L V-8 VVT	VORTEC 6.2L V-8 VVT
HP@RPM	SWB: 320 @ 5400 LWB: 320 @ 5400	— LWB: 320 @ 5400	SWB: 403 @ 5700 LWB: 403 @ 5700
LB-FT TORQUE@RPM	SWB: 335 @ 4000 LWB: 335 @ 4000	— LWB: 335 @ 4000	SWB: 417 @ 4300 LWB: 417 @ 4300
ACTIVE FUEL MANAGEMENT	Included	Included	Included
E85 CAPABLE	Included	Included	Included
EPA-ESTIMATED CITY/HWY MPG	15/21 GAS 11/16 E85	15/21 GAS 11/16 E85	14/18 GAS [2WD] 10/15 E85 [2WD] 13/18 GAS [AWD] 10/14 E85 [AWD]
STANDARD	YUKON YUKON XL 2WD	YUKON XL 4WD	YUKON DENALI YUKON XL DENALI

MEASUREMENTS/CAPACITIES

	2WD YUKON	4WD YUKON	2WD YUKON XL	4WD YUKON XL	YUKON DENALI	YUKON XL DENALI
TURNING DIAMETER curb to curb, ft.	39.0	39.0	43.0	43.0	39.0	43.0
WHEELBASE in.	116.0	116.0	130.0	130.0	116.0	130.0
MAXIMUM CARGO VOLUME ¹ cu.ft.	108.9	108.9	137.4	137.4	108.9	137.4
OVERALL LENGTH in.	202.0	202.0	222.4	222.4	202.0	222.4
OVERALL WIDTH in.	79.0	79.0	79.1	79.1	79.0	79.1
HEIGHT in.	76.9	76.9	76.8	76.8	77.0	77.1
FUEL TANK CAPACITY approx. gallons	26.0	26.0	31.0	31.0	26.0	31.0

YUKON/YUKON XL/YUKON DENALI/YUKON XL DENALI TRANSMISSION SPECIFICATIONS

MODEL	DRIVETRAIN / TRANSMISSION
YUKON / YUKON XL	2WD or 4WD / Hydra-Matic 6-speed electronically controlled automatic with Driver Shift Control, Electronic Engine Grade Braking and Tow/Haul mode
YUKON DENALI	2WD or AWD / Hydra-Matic 6-speed electronically controlled automatic with Driver Shift Control, Electronic Engine Grade Braking and Tow/Haul mode

MAXIMUM TRAILER WEIGHT RATINGS²

MODEL	YUKON VORTEC 5.3L		YUKON XL VORTEC 5.3L		YUKON DENALI/ YUKON XL DENALI VORTEC 6.2L	
	AXLE RATIO	MAX. TRAILER WEIGHT (LBS)	AXLE RATIO	MAX. TRAILER WEIGHT (LBS)	AXLE RATIO	MAX. TRAILER WEIGHT (LBS)
1500 2WD	3.08/3.42	5500/8500	3.08/3.42	5100/8100	—	—
1500 4WD	3.08/3.42	5200/8200	3.08/3.42	5000/8000	—	—
DENALI 2WD	—	—	—	—	3.42	8300/7900
DENALI AWD	—	—	—	—	3.42	8100/7800

¹Cargo and load capacity limited by weight and distribution. ²Maximum trailer weight ratings are calculated assuming a base vehicle, except for any option(s) necessary to achieve the rating, plus driver. The weight of other optional equipment, passengers and cargo will reduce the maximum trailer weight your vehicle can tow. See your GMC dealer for additional details.

IMPORTANT WORDS

PRO GRADE PROTECTION

For 2014, Yukon comes with the Pro Grade Protection Plan, which includes 2-year/24,000-mile recommended scheduled maintenance,¹ 3-year/36,000-mile bumper-to-bumper limited warranty² and 5-year/100,000-mile powertrain limited warranty,² Roadside Assistance and Courtesy Transportation.

Starting with the owner orientation—and full tank of gas—you receive when you take possession of your Yukon to the **24-Hour Roadside Assistance, Courtesy Transportation and Travel Benefits**, you receive a portfolio of owner privileges that lasts throughout your warranty. For expert product information, Roadside Assistance or other services, call 1-800-GMC-8782.

TRAVEL BENEFITS AND ROADSIDE ASSISTANCE Available around the clock: trip routing service, a program for reimbursement for trip interruption due to necessary warranty repairs, towing, flat tire change, jump-starts and more for 5 years or 100,000 miles (whichever comes first).

COURTESY TRANSPORTATION Available at participating dealers: shuttle service, reimbursement of certain public transportation or fuel expenses for overnight warranty repairs and courtesy rental for overnight work repairs. See your dealer for details.

GMC OWNER CENTER A complimentary, one-stop resource to enhance your GMC ownership experience. It's easy to sign up. Just go to gm.com/gmownercenter/gmc.

ONSTAR



OnStar is a core asset of your Yukon. Benefiting from more than a decade of innovative development, it is both a highly advanced technology—fully integrated within the vehicle—and a warm human service. Standard on all Yukon models are 6 months of the OnStar Directions & Connections Plan, including the convenience of available Hands-Free Calling.³ It also includes Automatic Crash Response, Stolen Vehicle Assistance, link to Emergency Services, Roadside Assistance, Remote Door Unlock, OnStar Vehicle Diagnostics, Crisis Assist and Remote Horn and Lights. OnStar services require vehicle electrical system (including battery), wireless service and GPS satellite signals to be available and operating for features to function properly. OnStar acts as a link to existing emergency service providers. Not all vehicles may transmit all crash data. Visit onstar.com for coverage maps, details and system limitations. Services vary with conditions.

SIRIUSXM SATELLITE RADIO



SiriusXM Satellite Radio⁴ is standard on all Yukon models. It includes 3 trial months of service. SiriusXM Satellite Radio makes your drive come alive with commercial-free music channels from virtually every genre, artist-dedicated channels, live performances and more. Tune in to live play-by-play from the biggest sports, exclusive entertainment from top personalities, compelling talk, hilarious comedy, world-class news, local traffic and weather and family-friendly programming. Welcome to the world of satellite radio. Visit siriusxm.com for details.

GMC CERTIFIED SERVICE



Certified Service To help your Yukon live up to its performance promise, GMC Certified Service—found exclusively at your GMC dealer—is there. With all the engineering excellence in Yukon, GM-trained technicians have the expertise to care for all of it.

ADDITIONAL NOTES

A NOTE ON CHILD SAFETY Always use safety belts and the correct child restraint for your child's age and size, even with air bags. Even in vehicles equipped with the Passenger Sensing System, children are safer when properly secured in a rear seat in the appropriate infant, child or booster seat. Never place a rear-facing infant restraint in the front seat of any vehicle equipped with an active frontal air bag. See your vehicle Owner's Manual and child safety seat instructions for more safety information.

TRAILERING AND OFF-ROAD INFORMATION Please carefully review the Owner's Manual for important safety information about trailering or off-road driving in your vehicle.

IMPORTANT WORDS ABOUT THIS CATALOG We have tried to make this catalog comprehensive and factual. We reserve the right, however, to make changes at any time, without notice, in prices, colors, materials, equipment, specifications, models and availability. Specifications, dimensions, measurements, ratings and other numbers in this catalog and other printed materials provided at the dealership or affixed to vehicles are approximates based upon design and engineering drawings and prototypes and laboratory tests. Your vehicle may differ due to variations in manufacture and equipment. Since some information may have been updated since the time of printing, please check with your GMC dealer for complete details. GMC reserves the right to lengthen or shorten the model year for any product for any reason, or to start and end model years at different times. All competitive claims are based on the latest information available at the time of printing and GM Large Utility segment.

FLEET ORDERS Some standard content may be deleted with fleet orders. See dealer for details.

ENGINES GMC products are equipped with engines produced by GM Powertrain or other suppliers to GM worldwide. The engines in GMC products may also be used in other GM makes and models.

GMC.COM See more of Yukon on our Web site: gm.com/yukon. More photos and information; hot links to related subjects; convenient dealer locator; pricing guide, spec out your own vehicle. Or call 1-800-GMC-8782.

AN IMPORTANT NOTE ABOUT ALTERATIONS AND WARRANTIES Installations or alterations to the original equipment vehicle (or chassis) as distributed by General Motors are not covered by the General Motors New-Vehicle Limited Warranty. The special body company, assembler, equipment installer or upfitter is solely responsible for warranties on the body or equipment and any alterations (or any effect of the alterations) to any of the parts, components, systems or assemblies installed by GM. General Motors is not responsible for the safety or quality of design features, materials or workmanship of any alterations by such suppliers.

NEW-VEHICLE LIMITED WARRANTY All GMC light-duty vehicles come with a fully transferable, no-deductible 5-year/100,000-mile (whichever comes first) Powertrain Limited Warranty. GM vehicles registered in the USA are also covered for 3 years or 36,000 miles (whichever comes first). Coverage includes tires and towing to your nearest GMC dealership. Repairs will be made to correct any vehicle defect and most warranty repairs will be made at no charge. In addition, rust-through corrosion will be covered for 6 years or 100,000 miles (whichever comes first). Yukon also comes with a 2-year/24,000-mile (whichever comes first) recommended maintenance schedule plan. See dealer for details.

ASSEMBLY GMC vehicles and their components are assembled or produced by different operating units of General Motors, its subsidiaries or suppliers to GM worldwide. We sometimes find it necessary to produce GMC vehicles with different or differently sourced components than originally scheduled. Since some options may be unavailable when your vehicle is assembled, we suggest that you verify that your vehicle includes the equipment you ordered or, if there are changes, that they are acceptable to you.

GMMOBILITY.COM (1-800-323-9935) GM Mobility offers financial assistance for eligible adaptive equipment to make automotive travel easier for persons with disabilities or special transportation needs. To learn more about special GM Mobility offers, visit gmmobility.com.

GMCARDMEMBERSERVICES.COM Did you know about the family of reward credit cards that can help you get a great deal on a new GM car, light-duty truck, SUV or crossover? With a GM reward card, you accrue earnings on every credit card purchase to use toward the purchase or lease of an eligible new GM vehicle. With three cards to choose from, you're sure to find one that suits you.

¹Covers only scheduled oil changes with filter, tire rotations and 27-point inspection, according to your new vehicle's recommended maintenance schedule for up to 2 years or 24,000 miles, whichever comes first. Does not include air filters. Maximum of 4 service events. See participating dealer for other restrictions and complete details. ²Whichever comes first. See dealer for limited warranty details. ³Visit onstar.com for coverage map, details and system limitations. OnStar Hands-Free Calling requires existing OnStar service contract and prepaid minutes. Not available in certain markets. Calls can be made in U.S. and Canada only. ⁴If you subscribe after your trial period, *subscriptions are continuous until you call SiriusXM to cancel*. See SiriusXM Customer Agreement for complete terms at siriusxm.com. Other fees and taxes will apply. All fees and programming subject to change. For more information about NavTraffic, visit siriusxm.com/navtraffic. XM satellite service is available only to those in the 48 contiguous USA and DC.

©2013 General Motors. All rights reserved. GM, the GM logo, GMC, the slogans, emblems, vehicle model names, vehicle body designs and other marks appearing in this catalog are the trademarks and/or service marks of General Motors, its subsidiaries, affiliates or licensors. iPod and iPhone are registered trademarks of Apple, Inc. Facebook is a registered trademark of Facebook, Inc. Twitter is a registered trademark of Twitter, Inc. YouTube is a registered trademark of Google, Inc. Sirius, XM and all related marks and logos are trademarks of SiriusXM Radio, Inc.



