

TRAILBLAZER

2006



CHEVROLET

2006 TRAILBLAZER

2006 TRAILBLAZER



TRAILBLAZER

2006



BE STRONG.

Sure we're proud to build the mid-size SUV with the most standard base model horsepower in its class.* And proud that its standard 291 horsepower Vortec 4200 I-6 engine was named one of Ward's Ten Best Engines four years in a row.† And we're pleased that for 2006, every TrailBlazer is equipped with the OnStar System and the StabiliTrak vehicle stability enhancement system. But what has us most pumped up is the introduction of the new 391 horsepower TrailBlazer SS. Yet the reason we built TrailBlazers so tremendously strong and capable wasn't to earn recognition and awards, it was to build you the SUV you need to take on the world on your own terms. Chevrolet. The most dependable, longest-lasting trucks on the road.**

For All Life's Roads.

*Based on 2005 Model Year data for GM Medium Utility segment and the latest published competitive information available at the time of printing. Excludes other GM vehicles.

† 2002, 2003, 2004 and 2005.

**Dependability based on longevity; 1981-July 2004 full-line light-duty truck company registrations. Excludes other GM divisions.

CHEVROLET



FOR ALL LIFE'S ROADS

For information about TrailBlazer
visit our Web site at trailblazer.gmcanada.com

TRAILBLAZER

SS

ONE PART CHEVY SUV. ONE PART CORVETTE.

No hyperbole required. The new TrailBlazer SS takes the strengths of TrailBlazer and adds sports car style performance, thanks to the Corvette-based 391 horsepower 6.0L LS2 V8 engine and a Sport Chassis Package. Quite a formidable combination, and quite a formidable presence, with its 20-inch polished aluminum wheels and monochrome paint scheme. Once you get behind the wheel, the real character of the SS is fully revealed. In other words, no matter how much we dial up the descriptors, the only way to really understand how the SS redefines SUV performance is through a test drive. TrailBlazer SS – not just a sporty SUV: the sports car of SUVs.

KEY FEATURES:

- 391 hp LS2 V8 engine
- Cold Air Induction Package
- SS-specific chassis with racetrack-developed suspension
- 20-inch polished aluminum wheels with all-season performance tires
- Automatic rear level-control air suspension
- Available full-time all-wheel drive.



TrailBlazer SS, shown in Black with standard 20-inch polished aluminum wheels.



TRAILBLAZER

SS INTERIOR

HALF CABIN. HALF COCKPIT.

When you step inside the TrailBlazer SS, another part of its personality comes into full view: namely, its unabashed luxury. Heated, leather-appointed front bucket seats with eight-way power adjusters set the tone, while the automatic dual-zone climate controls enable you to select the temperature settings. And with standard CD and cassette tape players, you can literally set the tone. Better yet, you can adjust the sound system and numerous other functions with the steering wheel-mounted controls. The high-performance luxury SUV: TrailBlazer SS.

KEY FEATURES:

- Heated, leather-appointed front bucket seats with suede inserts and eight-way power adjusters
- Automatic dual-zone climate controls
- Perforated leather-wrapped steering wheel
- Steering wheel-mounted sound system and Driver Information Centre controls
- Power adjustable brake and accelerator pedals
- CD and cassette tape player.



The SS-specific gauge cluster highlights its aggressive nature. (U.S. instrumentation shown in this brochure is metric in Canada.)





TrailBlazer SS interior, shown in Ebony Premium leather-appointed seating with suede inserts.

TRAILBLAZER

EXTERIOR

CONTENTS INCLUDED.

Every TrailBlazer is exceptionally well equipped and well built. That begins at the foundation, with the increased strength and reduced weight of full-length hydroformed-steel side rails. Also standard is the advanced StabiliTrak vehicle stability enhancement system that helps correct lateral skids. And no matter whether you choose a five-passenger Regular Wheelbase up-level LT model, or a seven-passenger EXT, both now offer the available 300 hp Vortec 5300 V8 with fuel-saving Displacement on Demand technology. With such a high level of content, TrailBlazer is redefining value in a mid-size SUV.

KEY FEATURES:

- Five-passenger models with 2870 mm (113.0 in.) wheelbase
- Seven-passenger EXT models add 407 mm (16 in.) to the wheelbase
- EXT cargo capacity of 3042 L (107.4 cu. ft.) with rear seats folded
- Standard 291 hp Vortec in-line 6-cylinder engine with variable valve timing technology
- Available 300 hp Vortec 5300 V8 with Displacement on Demand technology on LS EXT and both LT models*
- LT models receive appearance enhancements that include new front and rear fascias, headlights, grille and body-side mouldings.

*Available on Regular Wheelbase LT model, requires PEG 1SC.





TRAILBLAZER

LT INTERIOR

FIRST-CLASS ADVENTURE.

TrailBlazer is designed to take you on a range of adventures. But you'll be doing anything but roughing it along the way – particularly in the TrailBlazer LT. Your comfort can be personalized with the standard eight-way power adjustable driver's seat. For a touch of luxury, opt for the available leather-appointed seating. And it's easy to solve any disagreement about cabin temperature, thanks to the standard dual-zone climate controls. What's wrong with pampering yourself en route to your next adventure? Absolutely nothing.

KEY FEATURES:

- Front bucket seats with adjustable head restraints
- Power eight-way driver's seat with lumbar adjuster
- Cargo convenience net, cargo area mat and security shade (except EXT LT)
- Universal 3-channel home remote transmitter
- Reading lights in overhead console and illuminated vanity mirrors
- Available Premium leather-appointed seating.



Available rear DVD entertainment system features a fold-down 178 mm (7 in.) monitor, video inputs and two wireless headphones.





TrailBlazer EXT LT interior, shown in Light Gray with available Premium leather-appointed seating and other available equipment.

TRAILBLAZER

LS INTERIOR

NO NEED TO PICK FAVOURITES.

Passengers vs. cargo. Front seats vs. rear seats. Sometimes deciding who and what goes where in an SUV can require some difficult choices. TrailBlazer eliminates this problem with its flexible 65/35 split-folding second-row seats. They can be flipped and folded, depending on your passenger or cargo requirements. As for who sits where, TrailBlazer is dedicated to everyone's comfort. Dual-zone climate controls address the needs of those seated in the front, while upper and lower rear-seat ducts and separate ventilation controls ensure the comfort is evenly distributed throughout the cabin. Equal rights all round.

KEY FEATURES:

- Front bucket seats with adjustable head restraints
- Three-passenger 65/35 split, flip-and-fold second-row bench seat
- Manual dual-zone air conditioning
- Front floor console
- Three 12-volt auxiliary power outlets
- Tilt adjustable steering column
- Power windows, power door locks and heated power exterior mirrors
- Retained accessory power.





TrailBlazer LS interior, shown in Light Gray Premium cloth with available equipment.

TRAILBLAZER

CONTROLS

YOU'RE INFORMED. THEY'RE ENTERTAINED.

TrailBlazer uses technology in very different ways to satisfy the differing needs of the driver and passengers. The comprehensive multi-lingual Driver Information Centre* and the available integrated DVD navigation system** give the driver unprecedented command over a wide range of vehicle- and trip-related data. Meanwhile, your rear-seat passengers can enjoy what's playing on the available rear DVD entertainment system. Keeping everybody happy.

KEY FEATURES:

- Six-speaker sound system with CD player
- Available six-disc in-dash CD changer*
- Available Bose premium sound system with amplifier
- Multi-language Driver Information Centre*
- Available rear DVD entertainment system*
- Available DVD navigation system*,**
- Available power adjustable brake and accelerator pedals.*

*LT and SS models only.

**At time of print, detailed map coverage is available for most major urban areas of the United States and for certain metropolitan areas of Canada (Vancouver, Calgary, Edmonton, Winnipeg, Windsor, London, Toronto, Ottawa, Montreal, Quebec City and Halifax). Coverage is significantly limited outside these areas. Choose the factory navigation option and you will receive an updated navigation DVD each of the first two years following your purchase.



The available power adjustable brake and accelerator pedals accommodate drivers of different heights.



Available rear audio controls allow rear passengers to select their own audio source – independent of what is being played in the front. Adding to the comfort of rear passengers are separate rear ventilation controls.



The LT driver's environment is shown here with the following available equipment: steering wheel-mounted controls, automatic dual-zone air conditioning and DVD navigation system.**

TRAILBLAZER

POWER

THE ENGINE LINEUP: POWER. MORE POWER. AND EVEN MORE POWER.

And then there were three: TrailBlazer now features three advanced and extremely powerful engines in its lineup. The 291 hp Vortec 4200 in-line 6-cylinder engine generates the most standard base-model horsepower in its class.* For 2006, both the Regular Wheelbase up-level LT and EXT models offer the even more powerful, available, aluminum block Vortec 5300 V8 with 300 hp and fuel-saving Displacement on Demand (DOD). But if the ultimate in power is what you're after, there's no substitute for the 391 hp 6.0L LS2 V8 under the hood of the SS. Power – three different ways.

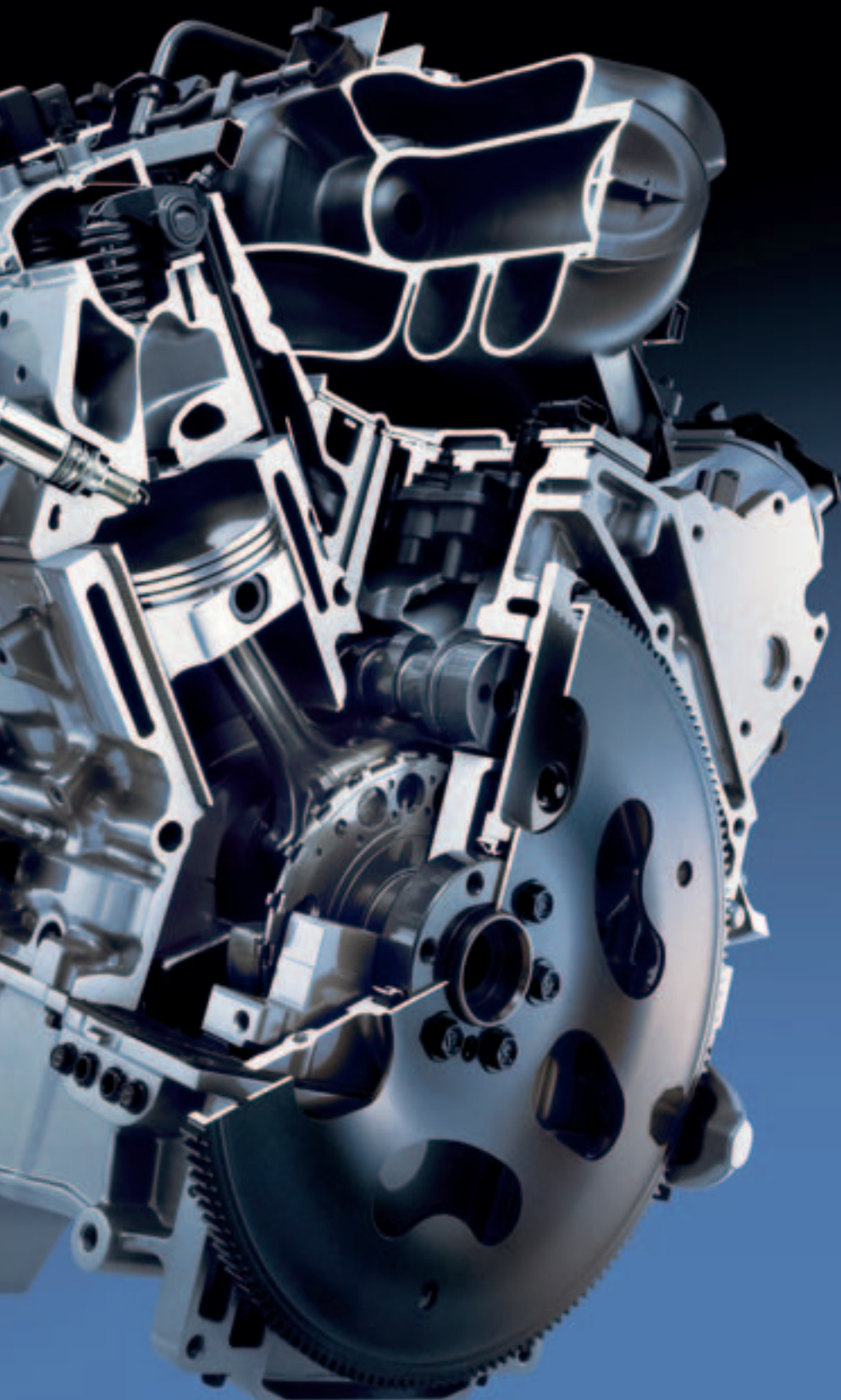
*Based on 2005 Model Year data for GM Medium Utility segment and the latest published competitive information available at the time of printing. Excludes other GM vehicles.

VORTEC 5300 V8 KEY FEATURES:

- Generates 300 hp at 5200 rpm and 330 lb.-ft. of torque at 4000 rpm
- Displacement on Demand (DOD)
- Aluminum engine block and cylinder heads
- Smart valve placement, optimizing airflow and combustion
- A high-capacity oil pump, gear-driven directly off the crankshaft, provides reduced friction and improved lubrication
- Electronic throttle control
- Deep-skirt V8 block design with six-bolt main bearing caps.



Aluminum block Vortec 5300 V8.



VORTEC 4200 IN-LINE 6 KEY FEATURES:

- Generates 291 hp at 6000 rpm and 277 lb.-ft. of torque at 4800 rpm
- More horsepower than any standard base-model engine in its class*
- 90 percent of torque available from 1600 rpm to 5600 rpm
- Named one of Ward's Ten Best Engines four years running (2002, 2003, 2004 and 2005)
- Variable exhaust valve timing
- Electronic throttle control
- Rigid-structure design
- Naturally balanced, due to its in-line 6-cylinder configuration.

6.0L LS2 V8 KEY FEATURES:

- Generates 391 hp at 5400 rpm and 395 lb.-ft. of torque at 4400 rpm
- High-strength connecting rods made from sintered-powder metal, making them lighter and more evenly balanced
- Lightweight thermoplastic composite intake manifold with equal-length intake runners for efficient high-volume airflow
- High-lift camshaft with low-friction, hydraulic, roller-rocker style valvetrain
- Coil-near-plug ignition
- Deep-skirt V8 aluminum block design with six-bolt main bearing caps.

TRAILBLAZER

SAFETY AND SECURITY

DID WE MENTION THE FIVE-STAR SAFETY RATING?

Once you know that the advanced safety and security of the OnStar System is standard on every model. Once you know about the way that the standard StabiliTrak system helps correct oversteer and understeer driving situations. Once you know about the standard automatic front Passenger Sensing System that is designed to offer the most effective level of air bag protection in the event of a frontal impact.* Then and only then will you be aware of what a priority safety is with TrailBlazer. That priority is reflected in how the 2005 Model Year TrailBlazer has earned the coveted five-star side-impact safety ratings for both front and rear occupants from the National Highway Traffic Safety Administration.**

*A NOTE ON CHILD SAFETY: Always use safety belts and proper child restraints, even with air bags. Even with the Passenger Sensing System, children are safer when properly secured in a rear seat. Never place a rear-facing infant restraint in the front seat of any vehicle equipped with an active frontal air bag. Refer to the vehicle Owner's Manual and child safety seat instructions for more information.

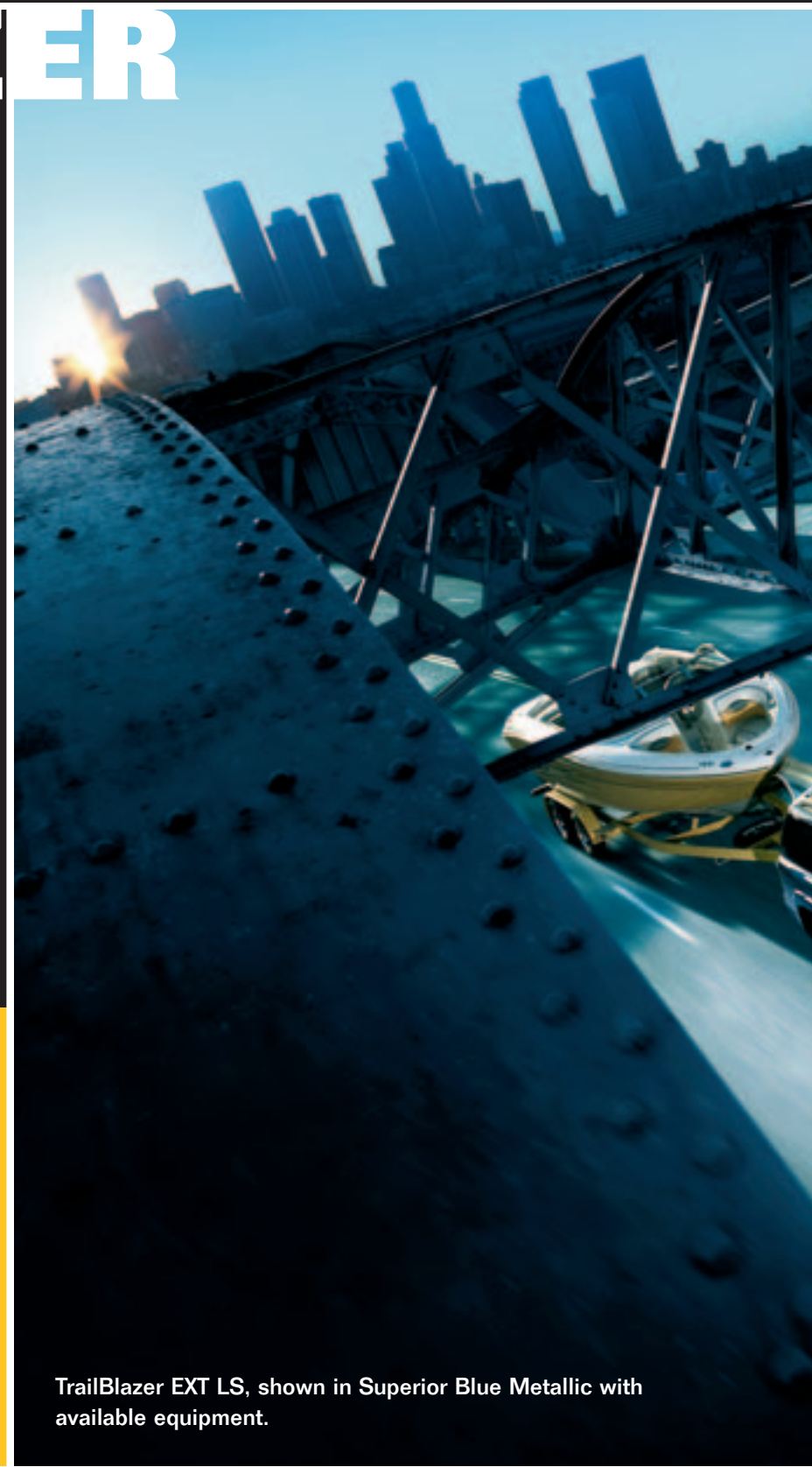
**Front and rear occupant side-impact safety ratings for 2005 four-door model. U.S. government ratings are part of the National Highway Traffic Safety Administration's (NHTSA) New Car Assessment Program (NCAP). 2006 Model Year not tested yet.



Heated, power remote-controlled exterior mirrors are standard. Passenger-side reverse tilt and memory features, as well as integral turn signals, are standard on SS and available on LT models.



The added peace of mind of the OnStar System, with one year of the Safe & Sound Plan, is standard on all TrailBlazers.



TrailBlazer EXT LS, shown in Superior Blue Metallic with available equipment.



Chevrolet is known for building vehicles that deliver excellent value and dependability. One important aspect of Chevrolet value is represented by the advanced safety, security, and convenience of OnStar.* OnStar uses advanced communications technology to enhance your peace of mind whenever you're in your Chevrolet. All it takes is a single push of the blue OnStar button usually located on the interior rear-view mirror, in the overhead console, or near the radio display – the button connects you with one of our specially trained OnStar Advisors. They are standing by, ready to provide support 24 hours a day, 365 days a year.

What can OnStar Advisors do for you? They can provide a wealth of information and perform a variety of services, including a remote diagnostic check of your vehicle's engine and electrical components. In an emergency, an Advisor will attempt to locate your vehicle, find out what assistance you need, and notify nearby emergency service providers. And if air bags are deployed in your vehicle, an Advisor will contact you to determine if you are in need of assistance.

Another convenient feature is OnStar Hands-Free Calling, a hands-free, voice-activated wireless technology integrated into your vehicle. It's there in case your hand-held phone is lost, forgotten or has a low battery. Even better, there are no additional monthly fees, or additional long distance and roaming charges. And as a new customer, you will receive 30 complimentary minutes good for two months after activation.

Now you can enjoy the peace of mind that comes with knowing you're doing all you can to help keep you, your family, and your vehicle safe. Just ask the almost 150,000 people who have become OnStar subscribers in Canada. How hard does OnStar work for you? The facts speak for themselves: every month in Canada OnStar Advisors handle an average of 9100 routing calls, 2500 emergency calls, 2600 door unlocks, and 625 Roadside Assistance dispatches.

OnStar offers two different service plans, allowing you to select the services that are most convenient for you. The Safe & Sound Plan is standard for the first year on all TrailBlazer models. In addition, the available Directions & Connections Plan offers all of the safety and security services included in the Safe & Sound Plan, plus you'll have access to driving directions and information and convenience services and RideAssist. See your dealer for more information on plans and services.

*OnStar services require vehicle electrical system (including battery), wireless service, and GPS satellite signals to be available and operating for features to function properly. Not all OnStar features are available on all vehicles. OnStar Hands-Free Calling requires a Hands-Free Calling enabled vehicle, existing OnStar service contract, and prepaid calling minutes, and is not available in Alaska and some other markets. Calls may be made to the U.S. and Canada only. OnStar voice recognition system may not work with some voices. OnStar acts as a link to existing emergency service providers. Subscription Service Agreement required. Due to the transition of the wireless industry from analogue to digital technology, as of January 1, 2008, OnStar plans to offer service only through equipment that operates on the digital network, which may require the purchase of a system upgrade for eligible vehicles. Call 1.888.4.ONSTAR (1.888.466.7827), TTY 1.877.248.2080 or visit onstar.ca for OnStar's Terms & Conditions, Privacy Policy, and system limitations and details.

TRAILBLAZER

TECHNOLOGY

THE MORE YOU KNOW, THE BETTER IT LOOKS.

TrailBlazer's brash style is certain to capture your attention. But with this marvel of engineering, the deeper you look, the better it looks. From StabiliTrak to hydroformed steel and Rainsense wipers, TrailBlazer sets the pace for all SUVs. Because we know there's a lot more to an SUV than rugged good looks. TrailBlazer – the one with the rugged engineering.

3 FOUR-SPEED AUTOMATIC TRANSMISSION

TrailBlazer's precise shifting and smooth performance across the full torque curve are the products of its electronically controlled four-speed automatic transmission.

4 FULL-LENGTH HYDROFORMED-STEEL FRAME SIDE RAILS

The foundation of TrailBlazer's strength is its chassis, which features full-length hydroformed-steel frame side rails. Hydroforming reduces stretching during manufacturing, allowing the steel to retain more of its strength and improving its dimensional accuracy.

5 ADVANCED SUSPENSION DESIGN

A coil-over-shock modular front suspension design features upper and lower control arms, which enhance stability. A five-link rear suspension with coil springs and stabilizer bars contribute to TrailBlazer's sedan-like feel and handling.

6 ENHANCED QUIET

TrailBlazer's cabin is insulated from exterior noise through the use of an acoustic laminated windshield and strategically placed acoustic absorbers and seals.

2 AUTOTRAC 4x4 SYSTEM

Autotrac's automatic four-wheel-drive mode automatically transfers power between front and rear wheels whenever rear-wheel slippage is detected. It also operates in traditional 2HI, 4HI and 4LO modes, and includes a Neutral mode. The system is standard on all 4x4 models.

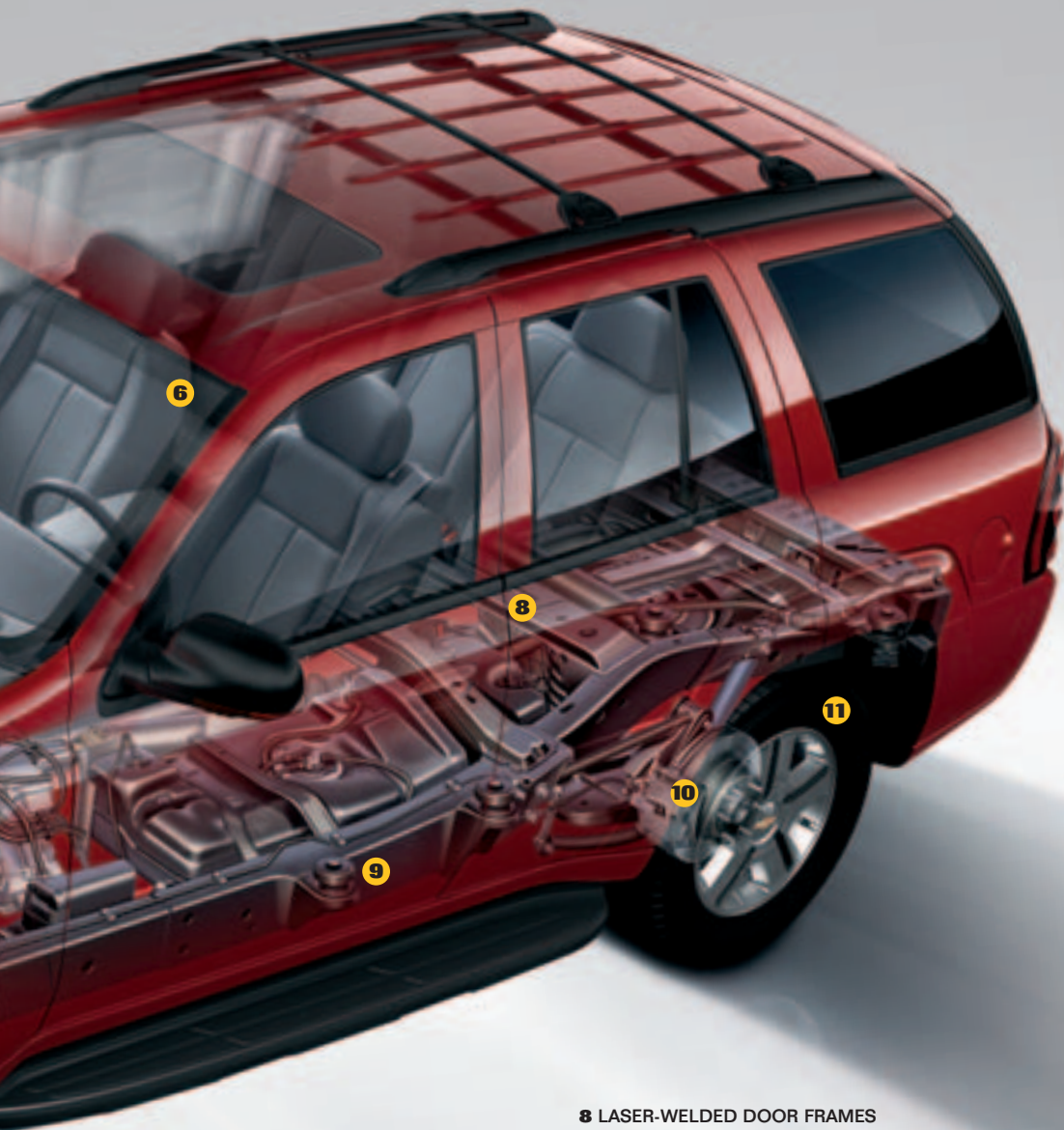
1 RAISENSE WINDSHIELD WIPERS

When the Rainsense wipers are engaged, they operate automatically whenever precipitation hits the windshield, using one of five available wiper delays. Available on LT models.

7 STABILITRAK VEHICLE STABILITY ENHANCEMENT SYSTEM

The standard StabiliTrak system continuously monitors steering angle, wheel speeds, brake pressure and lateral acceleration. If the system detects a lateral skid, it intervenes by adjusting brake pressure and engine power to help return TrailBlazer to its intended driving line. This feature includes standard traction assist.





8 LASER-WELDED DOOR FRAMES

A laser-welding process is used for the door frames, instead of traditional steel stampings. This process helps increase the strength of the body structure, enhancing occupant protection.

9 TUNED BODY MOUNTS

The most effective way to reduce noise and vibration is to absorb them before they can penetrate the cabin. TrailBlazer's specially tuned body mounts perform precisely that function.

10 FOUR-WHEEL ABS DISC BRAKES

Four-wheel disc brakes with an anti-lock braking system (ABS) are standard. Each disc is vented, to help dissipate heat. To reduce weight, the brake calipers are made of aluminum. Brake linings are manufactured with non-asbestos organic compounds to increase their recyclability.

11 TIRE PRESSURE MONITOR

The tire inflation monitoring system on the TrailBlazer SS detects when tire pressure is either too high or too low, and then alerts the driver using the Driver Information Centre.

CORROSION PROTECTION

TrailBlazer is built to resist corrosion. All exterior body panels are made of two-sided galvanized steel, except the roof, where it isn't needed. The frame is electrostatically coated for additional corrosion-fighting capability.

DISPLACEMENT ON DEMAND

The enhanced, Vortec 5300 V8, that's available on EXT models and up-level LT Regular Wheelbase models, features Displacement on Demand (DOD) technology that shuts down four cylinders under low-demand operating conditions, such as when driving at highway speeds on level stretches of road. The cylinder deactivation and reactivation are barely perceptible.

POWER MANAGEMENT SYSTEM

A power management system helps to eliminate potential sources of battery drain. A key feature of this system is battery run-down protection, which shuts off interior lights, and/or cargo area lights, if they are left on for more than 20 minutes after the ignition is turned off.

NEXT-GENERATION TRUCK BODY CONTROLLER

This sophisticated on-board computer module is both highly capable and reliable. It is fast and accurate – just what's needed for running electronic systems such as PASSLock and battery run-down protection.

TRAILBLAZER

ACCESSORIES

IT'S NOT JUST A TRAILBLAZER. IT'S YOUR TRAILBLAZER.

TrailBlazer is built to reflect who you are. But don't stop there. You can transform your TrailBlazer into a personalized expression of your style and priorities – with GM Accessories. They are the only accessories that are integrated into the process of designing your vehicle, ensuring excellent fit, finish and functionality. And only GM Accessories are backed by GM's 3-year/60,000 km New Vehicle Limited Warranty.* They can also be included in your new-vehicle lease or finance agreement through GMAC. Ask your dealer for a complete list of the GM Accessories available for TrailBlazer, or visit gmcanada.com

*When permanently installed by the dealer at the time you purchase or lease your new vehicle.



Accessories

GM ACCESSORIES AVAILABLE FOR TRAILBLAZER INCLUDE:

- Hood protector
- Assist steps
- Splash guards
- Roof-mounted bicycle carrier
- Ventvisors
- Rear air deflector
- Cargo management system
- All-weather floor mats.
- Hitch-mounted ski/bicycle carrier
- Custom vinyl cargo area cover





TRAILBLAZER STANDARD & OPTIONAL FEATURES

SAFETY AND SECURITY	LS	LT	SS¹
Air bags – dual-stage, driver and front-passenger, frontal includes Passenger Sensing System with automatic air bag suppression	S	S	S
Air bags – front and 2nd-row, side head curtain	0	0	0
Brake/transmission shift interlock	S	S	S
Door locks – automatic power, programmable with lock-out protection and last door locking features	S	S	S
Door locks – rear doors, child-security	S	S	S
Headlights – high-output halogen with automatic light control	S	S	S
Illuminated entry/exit system	S	S	S
Keyless entry system – remote, includes perimeter lighting and Panic features	S	S	S
OnStar In-Vehicle Communications and Assistance Service – includes one-year Safe & Sound Plan	S	S	S
Safety restraints – LATCH (Lower Anchors and top Tethers for Children)	S	S	S
StabiliTrak – vehicle stability enhancement system, including traction assist	S	S	S
Theft-deterrent system – content theft alarm, audible/visible	–	S	S
Theft-deterrent system – PASSLock	S	S	S
Traction assist – Enhanced Traction System (ETS)	S	S	S

1 – Not available on EXT models.

MECHANICAL

Brakes – power, 4-wheel vented disc with 4-wheel anti-lock braking system (ABS)	S	S	S
Engine – Vortec 4200 in-line 6-cylinder Horsepower – 291 @ 6000 rpm, Torque – 277 lb.-ft. @ 4800 rpm	S	S	–
Engine – Vortec 5300 V8 with DOD technology (EXT LS and both LT models) Horsepower – 300 @ 5200 rpm, Torque – 330 lb.-ft. @ 4000 rpm	0	0 ²	–
Engine – 6.0L LS2 V8 with Cold Air Induction Package Horsepower – 391 @ 5400 rpm, Torque – 395 lb.-ft. @ 4400 rpm	–	–	S
Engine block heater	S	S	S
Exhaust system – aluminized stainless steel	S	S	S
Limited-slip differential – rear	–	–	S
Locking differential – rear	S	S	–
Steering – power, rack-and-pinion	S	S	S
Suspension – Premium, includes urethane jounce bumpers, front and rear stabilizer bars and Bilstein shock absorbers	S	S	–
Suspension – Sport, includes automatic rear-level control suspension and cargo area air inflator kit	–	–	S
Transfer case – Autotrac automatic 4-wheel drive with electronic controls and Auto 4x4 in addition to 2HI, 4HI, 4LO and Neutral settings (4x4 models)	S	S	–
Transfer case – All-wheel drive, torque-biased single speed open differential (AWD models)	–	–	S
Transmission – 4-speed automatic with overdrive	S	S	–
Transmission – super-duty 4-speed automatic with overdrive	–	–	S
Trailer Special Equipment Package – includes integrated weight-distributing platform with trailer hitch receiver and 7-pin sealed connector (4-pin on SS model)	S	S	S

2 – Available on Regular Wheelbase LT model, requires PEG 15C.

EXTERIOR

Assist steps – aluminum or black	0	0	–
Fog lights – halogen	–	S	S
Glass – Solar-Ray tinted, all windows behind front doors deep-tinted	S	S	S
Grille – charcoal, chrome centre bar	S	–	–
Grille – charcoal, body-coloured centre bar	–	S	–
Grille – unique SS, body-coloured	–	–	S
Grille guard	–	0	–
Liftgate – power release with integral liftglass	S	S	S
Mirrors – power remote control, heated	S	S	–
Mirrors – power remote control, heated, integrated side turn signal, memory feature and passenger-side curb view assist (black on LT and body-coloured on SS)	–	0	S
Mouldings – bodyside, charcoal	S	–	–
Mouldings – bodyside, body-coloured	–	S	–
Paint – monotone	S	S	S

EXTERIOR (continued)	LS	LT	SS¹
Paint – two-tone lower accent and wheel opening mouldings ²	–	0	–
Protection Package – includes hood protector and ventvisors	0	0	–
Roof rack – side rails	S	S	–
Roof rack – cross bars	0	0	–
Running boards – side step	0	0	–
Shield Package – transfer case, front differential, fuel tank and steering linkage skid plates (4x4 models)	0	0	–
Spare tire/carrier – underbody, full-size	S	S	S
Sunroof – power, sliding glass panel with express-open	–	0	0
Tires – P235/75R16 all-season, blackwall – except EXT models	S	–	–
Tires – P245/65R17 all-season, blackwall	S	S	–
Tires – P255/50R20 all-season, blackwall	–	–	S
Tires – outlined white lettered	0	0	–
Tow hooks – two, front (4x4 models)	0	0	–
Wheels – 16" x 7" Special aluminum (A) ³ – except EXT models	S	–	–
Wheels – 17" x 7" Bright aluminum (B) ³	S ⁴	S	–
Wheels – 17" x 7" Sport aluminum (C) ³	–	0	–
Wheels – 20" x 8" SS polished aluminum	–	–	S
Windshield wipers – 2-speed with variable delay	S	S	S
Windshield wipers – Rainsense with automatic variable delay	–	0	0
Wiper/washer – rear-window with variable delay	S	S	S

2 – Available on Regular Wheelbase LT model, requires PEG 15C.

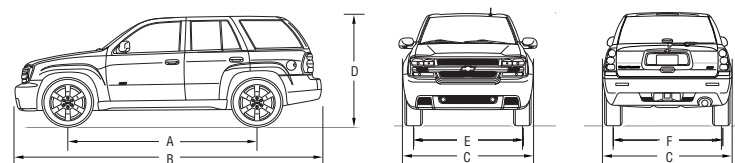
3 – Wheels shown on page 27.

4 – Standard on EXT LS model.

INTERIOR

Air conditioning – manual, dual-zone (includes independent rear fan and mode controls)	S	S	–
Air conditioning – automatic, dual-zone with exterior temperature display (includes independent rear fan and mode controls)	–	0	S
Cargo convenience net (except EXT models)	–	S	S
Cargo area – five tie-downs (except EXT models)	S	S	S
Cargo mat – rear area (except EXT models)	–	S	S
Cargo organizer	0	0	0
Cargo shade (except EXT models)	–	S	S
Cargo shelf – extends to provide flat load floor and/or rear cargo cover, stowable (EXT models)	0	0	–
Console – front floor with transmission shifter, cassette/CD storage and front and rear cupholders	S	S	S
Console – custom overhead, includes universal home remote transmitter	–	S	S
Cruise control – electronic with resume, coast and decelerate/accelerate features	S	S	S
Defogger – electric rear-window	S	S	S
Driver Convenience Package – includes automatic dual-zone climate control with exterior temperature display, leather-wrapped steering wheel with sound system, Driver Information Centre and climate controls, auto-dimming interior rear-view mirror with OnStar controls, rear-seat audio controls and earphone jacks and personalization of various safety, comfort and convenience features	–	0	S
Floor mats – front and rear, carpeted	S	S	S
Instrumentation – full analogue cluster (includes speedometer, tachometer, voltmeter, coolant temperature, oil pressure, odometer, trip odometer and fuel gauge)	S	S	S
Instrumentation – Driver Information centre includes multi-language and trip functions, GM Oil Life System, displays vital vehicle functions with both visual and audible reminders/warnings	–	S	S
Instrumentation – tire pressure monitoring system	–	–	S
Lights – theatre dimming with dome and cargo area lights, door and tailgate activated switches, illuminated entry/exit system	S	S	S
Lights – integrated reading lights for front row in overhead console	–	S	S
Mirror – rear-view, with OnStar controls	S	–	–
Mirror – rear-view, with OnStar controls, compass and auto-dimming feature	–	S	S
Pedals – power adjustable brake and accelerator	–	0	S
Power outlets – auxiliary 12-volt	S	S	S
Retained accessory power	S	S	S
Smoker's Package – includes ashtray and lighter	S	S	S

DIMENSIONS



INTERIOR (continued)	LS	LT	SS ¹
Steering column – tilt adjustable	S	S	S
Steering wheel – leather-wrapped	–	S	–
Steering wheel – leather-wrapped with sound system, Driver Information Centre, OnStar and climate controls	–	0 ⁶	S
Storage – concealed, underfloor and sidewall compartments in rear cargo area	S	S	S
Sunshades – LH and RH padded	S	–	–
Sunshades – LH and RH padded: illuminated vanity mirrors	–	S	S
Windows – power, driver's express-down with passenger lock-out feature	S	S	S
Windows – power, rear vent windows (EXT models)	–	S	–

SEATS

Front bucket seats with Premium cloth, manual recliners and driver's side manual lumbar support	S	–	–
As above, includes driver's side 8-way power seat adjuster	0 ⁶	S	–
Front bucket seats with Premium leather-appointed seating, driver and front-passenger 8-way power seat adjusters and driver's side manual lumbar support	–	0 ⁷	–
As above, includes heated front seats with separate controls for seatback and seat cushion and driver's side 2-position memory (SS models include suede inserts)	–	0	S
Head restraints, adjustable on outboard positions	S	S	S
2nd-row 65/35 split-back flip-and-fold bench seat	S	S	S
3rd-row 50/50 split-back slide-and-fold bench seat, provides level load floor when folded flat (EXT models)	S	S	–

5 – Included with Driver Convenience Package.

6 – Except EXT models.

7 – 3rd-row is vinyl covered on EXT models when leather-appointed seating is specified.

ENTERTAINMENT SYSTEMS

All TrailBlazer sound systems include an electronically tuned Delco AM/FM stereo with seek/scan, auto tone control, TheftLock, Radio Data System (RDS), speed-compensated volume, digital clock and 6 speakers			
AM/FM stereo with CD player	S	S	–
AM/FM stereo with cassette tape and CD players	0	0	S
AM/FM stereo with CD player and MP3 playback	–	0	0
AM/FM stereo with 6-disc in-dash CD changer	–	0	0
6-speaker Bose Premium sound system with Digital Signal Processor (DSP) amplifier	0	0	0
Rear-seat audio controls – includes earphone jacks	–	0	S
DVD Entertainment System – includes overhead fold-down 178 mm (7 in.) LCD colour monitor, DVD player, video camera and video game inputs (RCA) jacks, 2 wireless headphones and remote control	–	0	0
Integrated DVD Navigation System – includes AM/FM stereo with CD player, 6-speaker Bose Premium sound system, full-feature autonomous navigation with touch screen and points-of-interest ⁸	–	0	0
Sun and Sound Package – includes power sunroof, AM/FM stereo with 6-disc in-dash CD player and Bose Premium sound system	–	0	0

8 – Detailed map coverage is available for most major urban areas of the United States and certain metropolitan areas of Canada (Vancouver, Calgary, Edmonton, Winnipeg, Windsor, London, Toronto, Montreal, Quebec City and Halifax). Outside these areas coverage is significantly limited. Please speak with your Sales Consultant regarding the TrailBlazer/TrailBlazer EXT navigation system's geographic coverage. Choose the factory navigation option and you will receive an updated navigation DVD each of the first two years following your purchase.

S – Standard. 0 – Optional individually or in combination with other optional equipment. Note: The trim features indicated reflect only a portion of each trim level. See your Sales Consultant for complete listings, current availability and compatibility.

PREFERRED EQUIPMENT GROUPS (PEGS)

- TrailBlazer and TrailBlazer EXT add the following options to the LT model with PEG 1SC: Premium leather-appointed seating with driver and front-passenger 8-way power seat adjusters (including power recliners and lumbar supports), includes heated front bucket seats with separate controls for seatback and seat cushion and driver's side 2-position memory – Driver Convenience Package – Power adjustable pedals – AM/FM stereo with cassette tape and CD players and roof rack cross bars

EXTERIOR, mm (in.)	TRAILBLAZER	TRAILBLAZER EXT
Wheelbase (A)	2870 (113.0)	3277 (129.0)
Length (B)	4872 (191.8)	5278 (207.8)
Width (C)	1897 (74.7)	1897 (74.7)
Height (D)*	1842 (72.5)	1918 (75.5)
Front tread (E)	1603 (63.1)	1603 (63.1)
Rear tread (F)	1577 (62.1)	1577 (62.1)
Ground clearance	198 (7.8)	206 (8.1)

*Not including roof rack.

INTERIOR, mm (in.) front/2nd-row/3rd-row

Headroom	1021/1006/– (40.2/39.6/–)	1021/1006/968 (40.2/39.6/38.1)
Legroom	1191/940/– (46.9/37.0/–)	1191/941/792 (46.9/37.0/31.2)
Shoulder room	1486/1486/– (58.5/58.5/–)	1486/1486/1463 (58.5/58.5/57.6)
Hip room	1422/1478/– (56.0/58.2/–)	1422/1476/1250 (56.0/58.1/49.2)

CAPACITIES

Cargo area, L (cu. ft.)*	2268 (80.1)	3042 (107.4)
Fuel tank, L (imp. gal.)	83.0 (18.2)	94.6 (20.8)
Trailer towing capacity, max. kg (lb.) [†] – 4200 I-6	2903 (6400)	2722 (6000)
– 5300 V8	3084 (6800)	3084 (6800)
– 6000 V8	3084 (6800)	–

*With all rear seats folded.

[†]When properly equipped with required axle ratio. Trailer towing capacity is the weight of the trailer, its contents plus any other weight added to the tow vehicle. Optional equipment, passengers or cargo will reduce trailer towing capacity. Trailer tongue load should be 10% of the maximum trailer weight but should not exceed the load rating specified for the vehicle, engine or hitch combination. See your dealer or refer to the Trailering with Chevrolet Trucks brochure for details.

COLOURS. FABRICS. WHEELS.

Exterior Colours

67 Silverstone Metallic

22 Superior Blue Metallic

49 Bordeaux Red

41 Black (shown with optional two-tone)



Exterior/Interior Colour Compatibility

Exterior	Interior	
	28 – Light Gray ¹	48 – Ebony ²
16 – Graystone Metallic	•	•
22 – Superior Blue Metallic ³	•	•
38 – Emerald Jewel Metallic	• ⁵	•
41 – Black ³	•	•
49 – Bordeaux Red	•	•
50 – Summit White ³	•	•
62 – Dark Gray Metallic	•	•
67 – Silverstone Metallic ³	•	•
80 – Red Jewel Tintcoat ^{2,3,4}	•	•

¹Available on LS and LT models. ²Available on LT models. ³Available on SS models. ⁴Premium colour – available at extra cost. ⁵Not available on Regular wheelbase LT models. For two-tone colour availability, please see your Sales Consultant.

COLOURS. FABRICS. WHEELS.

COMMITMENT:

Rock solid trucks. Backed by a rock-solid commitment. There is nothing halfway about Chevrolet's approach to building strong and durable trucks. That can also be said of the way Chevrolet backs each and every truck that bears its name. A comprehensive series of support programs makes it easier to purchase or lease a Chevy Truck and help protect you and your vehicle down the road. A powerful example of the level of protection you can expect is the GM TOTAL™ Warranty. It is so thorough. It covers everything from the roof right down to the tires. So when you drive off the lot of your Chevrolet dealership, you can do so with total confidence. Peace of mind is knowing that your vehicle is built for the long haul, and is backed by a comprehensive warranty.

THE GM TOTAL™ WARRANTY:¹

The GM TOTAL™ Warranty is your promise of total warranty protection. It covers every new Chevy Truck for 3 years or 60,000 km.* Complete vehicle repairs are covered,** including parts and labour, with no deductible. The warranty includes:

- 3-year/60,000 km* complete vehicle repair coverage
- 6-year/160,000 km* corrosion perforation coverage
- 8-year/130,000 km* coverage on catalytic converters and powertrain control modules (PCMs).

*Whichever comes first. **To correct any defects in material or workmanship occurring during the warranty period. Regular maintenance is not included, nor is excessive wear and tear caused by reckless or negligent driving. ¹Conditions and limitations apply.

OTHER OWNERSHIP PRIVILEGES AND PROGRAMS:¹

- **Roadside Assistance** – 24/7 service via toll-free number during your warranty period, anywhere in Canada or the United States
- **Courtesy Transportation** – may be offered during the warranty period
- **GM Protection Plan (GMPP)** – the only extended services contract backed by the resources and commitment of General Motors. GMPP may be purchased at the time of your sale or lease, or subsequently
- **GM Mobility Program** – you may be eligible for reimbursement of up to \$1000 (taxes included) for adaptive equipment for your GM vehicle

- **GM Accessories** – personalize your vehicle with GM Accessories, specifically engineered for your new GM vehicle
- **GM Goodwrench Service** – with GM-certified technicians and GM-approved parts, nobody knows your GM vehicle better.

¹Conditions and limitations apply.

TO HELP YOU PURCHASE OR LEASE A NEW VEHICLE:

- **GMAC Financing** – on the spot financing at your GM dealership¹
- **GMAC SMARTLEASE** – a smart alternative to traditional financing¹
- **GM Student Bonus Program** – GM will cover the first two purchase finance or lease payments and the lease security deposit on eligible new GM vehicles for students and recent graduates of high school, college or university.¹
- **The GM Card** – eligible cardholders may be able to redeem up to \$3500 on GM Card® Earnings toward the total purchase price or lease down payment on selected vehicles. For more information on The GM Card please call 1-800-461-3279.¹

¹Conditions and limitations apply. ²Subject to eligibility.

INFORMATION RESOURCES:

You can find more information about these programs from your GM dealer, or at these information centres:

- The GM Web site at gmcanada.com
- The GM Customer Communication Marketing Centre at 1-800-GM-DRIVE (1-800-463-7483 or 1-800-263-3830 for TDD users) – for information about any GM product or service, including The GM Card and the GM Mobility Program
- For information about GMAC visit gmcanada.com or call 1-800-616-4622.



38 Emerald
Jewel Metallic



50 Summit White

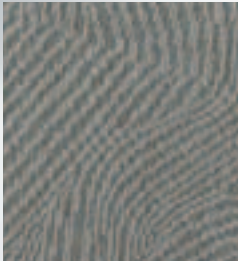
62 Dark Gray Metallic

80 Red Jewel Tintcoat[†]

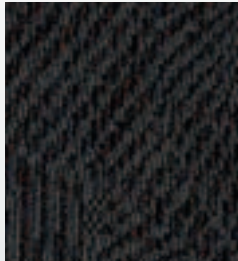
16 Graystone Metallic

Colours may not be exactly as illustrated due to restrictions of the printing process. Please see your Sales Consultant for specific colour and model availability and compatibility.

Interior Fabrics



28H – Light Gray
Premium Cloth



48H – Ebony
Premium Cloth

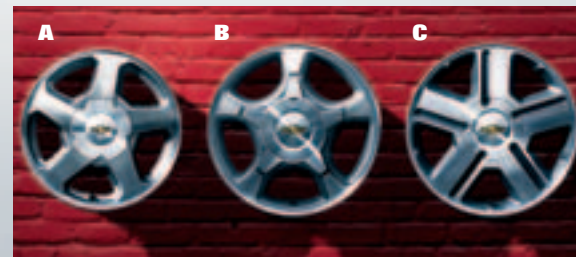


482 – Ebony
Premium Leather



282 – Light Gray
Premium Leather

Wheels



A. 16" x 7"
Special Aluminum,
standard on
TrailBlazer LS

B. 17" x 7"
Bright Aluminum,
standard on LT and
TrailBlazer EXT LS
models, available
on TrailBlazer LS

C. 17" x 7"
Sport Aluminum,
standard on
TrailBlazer EXT LS
and all LT models

A WORD ABOUT THIS BROCHURE

Some of the equipment shown or described throughout this brochure may be available at extra cost. We have tried to make this brochure comprehensive and factual. We reserve the right, however, to make changes at any time, without notice, in prices, colours, materials, equipment, specifications, models and availability. Specifications, dimensions, measurements, ratings and other numbers in this brochure and other printed materials provided at the dealership or affixed to vehicles are approximates based upon design and engineering drawings and prototypes and laboratory tests. Your vehicle may differ due to variations in manufacture and equipment. Since some information may have been adapted since the time of the printing, please check with your Chevrolet dealer for complete details. General Motors of Canada Limited reserves the right to lengthen or shorten the model year for any product, for any reason, or to start and end model years at different times.

PRIVACY STATEMENT

At General Motors of Canada Limited ("GM Canada") we respect your privacy and value our relationship with you. Your personal information will be protected, will never be sold, and will be used only by GM Canada, our affiliates, dealers/retailers, and service suppliers (only to provide services). If you wish to be removed from GM Canada marketing communications; would like to limit only certain marketing communications from us; would like a listing of our specific uses or further information about those with whom your information is shared; or for further information about our Privacy Policy and practices, please contact us at 1-800-GM-DRIVE (1-800-463-7483) or through our Web site at gmcanada.com

A WORD ABOUT ASSEMBLY

Chevrolet Trucks are equipped with engines and components produced and assembled by different operating units of General Motors, its subsidiaries and suppliers and these engines and components may change or be obtained from different sources from time to time. All such engines and components are approved for use in Chevrolet Trucks. Certain equipment ordered may be unavailable at the time of assembly and we suggest that you verify that your vehicle includes the equipment you ordered, or if there are changes, that they are acceptable to you.

TRADEMARK

The marks appearing in this Chevrolet TrailBlazer brochure including, but not limited to: General Motors, GM, the GM Canada emblem, the GM Canada Web site address, the GM Accessories logo, Chevrolet, Chevy, the Chevrolet emblem, Avalanche, Colorado, Corvette, Equinox, Express, Silverado, SS, SSR, Suburban, Tahoe, TrailBlazer and their respective logos, emblems, slogans and vehicle model names and body designs; and other marks such as Autotrac, PASSLock, Rainsense, SMARTLEASE, Solar-Ray, StabiliTrak, Vortec and TOTAL Warranty are trademarks of General Motors Corporation and/or General Motors of Canada Limited, its subsidiaries, affiliates or licensors.

GMAC is a registered trademark of the General Motors Acceptance Corporation.

OnStar, the OnStar logo and the OnStar button are registered trademarks of the OnStar Corporation.

TheftLock is a registered trademark of Delphi Automotive Systems.

Bose is a registered trademark of the Bose Corporation.

Radio Data System (RDS) is a registered trademark of the U.S. National Association of Broadcasters.

COPYRIGHT

©Copyright 2005 General Motors of Canada Limited. All Rights Reserved. All text, images, graphics, and other materials in this Chevrolet TrailBlazer brochure are subject to the copyright and other intellectual property rights of General Motors Corporation and/or General Motors of Canada Limited. These materials may not be reproduced, distributed or modified without the express written permission of General Motors Corporation and/or General Motors of Canada Limited.

Printed in Canada, August 2005.



SSR

A STORY ONLY GENERAL MOTORS CAN TELL.

General Motors' commitment to setting the highest standards in quality, safety, innovation, and fuel efficiency are matched by an equally strong commitment to the community.

DID YOU KNOW?

QUALITY: GM plants swept the J.D. Power Initial Quality Study^{SM*} rankings for North and South America: Gold and Silver Plant Quality Awards for the Canadian Oshawa #2 and #1 car plants, in addition to the Bronze Plant Quality Award for the Hamtramck, Michigan plant.

SAFETY: General Motors is the only automotive manufacturer committed to offering a full range of cars, trucks, and SUVs that provide safety protection before, during and after a collision. GM vehicles are equipped with a range of features and technologies that help drivers avoid collisions, reduce the risk of injury should a collision prove unavoidable, and help you get the assistance you need after a collision.

INNOVATION: GM is at the forefront of automotive technology with breakthrough features such as OnStar and XM Satellite Radio.

FUEL EFFICIENCY: GM offers more cars than any other automaker in Canada that get better than 7.0 L/100 km in highway driving. GM has also won more EnerGuide fuel-efficiency awards than any other car company.

GM IS COMMITTED TO CANADA.

INVESTMENT: GM invests more in Canada than any other car company: The \$2.5 billion Beacon Project represents the largest automotive investment in Canadian history.

EMPLOYMENT: GM directly employs over 20,000 people in Canada – more than any other car company.

DESIGN: GM is the only car company that designs, engineers and builds cars in Canada.

GM IS BEHIND YOU AND YOUR VEHICLE.

GM is equally comprehensive in the way it backs its Chevrolet vehicles. All Chevrolet Truck models include:

- **3-year/60,000 km** complete vehicle repair coverage**
- **6-year/160,000 km** corrosion perforation coverage**
- **8-year/130,000 km** coverage on catalytic converters and powertrain control modules (PCMs)**
- **3-year/60,000 km** 24-hour Roadside Assistance.**

*General Motors Corporation – Oshawa #2 (Ontario – Car) was the highest ranked plant, Oshawa #1 (Ontario) was the second ranked plant and Hamtramck, MI was the third ranked plant in North/South America among plants producing vehicles for the U.S. market in J.D. Power and Associates 2005 U.S. Initial Quality StudySM. Study based on a total of 62,251 U.S. consumer responses indicating owner reported problems during the first 90 days of ownership. www.jdpower.com

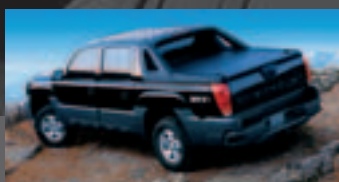
**Whichever comes first.



COLORADO



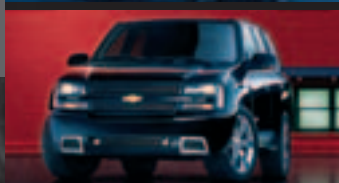
SILVERADO



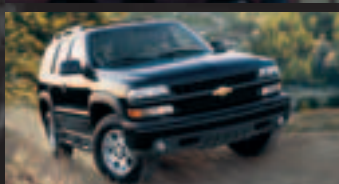
AVALANCHE



EQUINOX



TRAILBLAZER



TAHOE



SUBURBAN



EXPRESS



Canada

CHEVROLET PONTIAC BUICK GMC CADILLAC SATURN SAAB HUMMER

CHEVROLET FOR ALL LIFE'S ROADS

gmcanada.com

