


96

Corvette by Chevrolet. It was born as a dream car at the 1953 GM Motorama. Response was so enthusiastic that production of the two-seat fiberglass roadster was inevitable.

The rest is history. Wonderful high-octane, fuel-injected history.

It is with great pride that we present the 1996 version of America's sports car. New special editions will delight the collectors. And a new LT4 is the most powerful production small-block V8 in Corvette history.

Corvette is the sports car American's dream of owning more than any other. There's never been a better year to make the dream come true.



*Nassau, the Bahamas. December 1963. The Mecom Racing Team Corvette Grand Sports storm Nassau Speed Week (accompanied, coincidentally, by a group of vacationing Chevrolet engineers), shocking the racing world.*

*Photograph by Dave Friedman*

## ***CORVETTE GRAND SPORT COUPE.***

There is special significance to the "Grand Sport" nameplate. This newest Corvette is a tribute to the most famous competition Corvettes ever, the 1963 Grand Sport lightweight racers.

Only five Grand Sports were built, but these Sting Ray-based machines made history in a hurry. And then they were gone.

The 1996 Grand Sport is the highest-performance regular-production Corvette you can buy. It showcases the new 330-hp, LT4 V8 engine, F45 suspension with new Selective Real Time Damping, and Acceleration Slip Regulation (traction control).

The 1996 Grand Sport recalls the original racer appearance of 1963 — with Arctic White striping on vivid Admiral Blue paint. And it, too, is destined to make history.



**CORVETTE GRAND SPORT CONVERTIBLE.**



## **GRAND SPORT INTERIOR.**

You expect a great driving environment in a sports machine as focused as Corvette Grand Sport. And you get it.

Sport seats with six-way power adjusters and lumbar support are standard. Color choices are Red/Black or all Black, and the perforated seating surfaces feature "Grand Sport" lettering.

Everything — controls, instrumentation — is right where you want it to be. The relationship between seats, pedals, six-speed shifter and adjustable steering wheel is carefully considered and race car-inspired.

Inside as well as out, this is an automobile worthy of the Grand Sport name.





## GRAND SPORT PERFORMANCE.



The original Corvette Grand Sport racer of 1963 taught would-be competitors a thing or two about speed, stamina and cornering power.

Today's Grand Sport earns its designation



with the most powerful production small-block V8 ever placed in a Corvette.

Grand Sport is equipped with the new LT4



V8/6-speed manual powertrain, producing 330 horsepower at 5800 rpm. This performance equation is enhanced by a sophisticated four-wheel independent suspension with available Selective Real Time Damping, four-wheel disc brakes with ABS and Acceleration Slip Regulation

(traction control). Goodyear GS-C Eagle tires on beefy, black, 17-inch wheels add to Grand Sport tenacity.



Everything we've gained from our racing experience with fourth-generation Corvettes is reflected in this car.



The Grand Sport is a very special Corvette — as were the "fuelie" Corvettes of the Fifties and the 427 "big-blocks" of the Sixties — and it will never go unnoticed.

*Those dual red hash marks on the left front fender of every 1996 Grand Sport have significance. Of the five original Grand Sport racers, three coupes made their debut with the Mecom Racing Team at Nassau, in 1963. Along with their distinctive Mecom Team paint scheme, color-coded hash marks were used on the bodywork to differentiate one car from another.*

COLLECTOR  
EDITION 

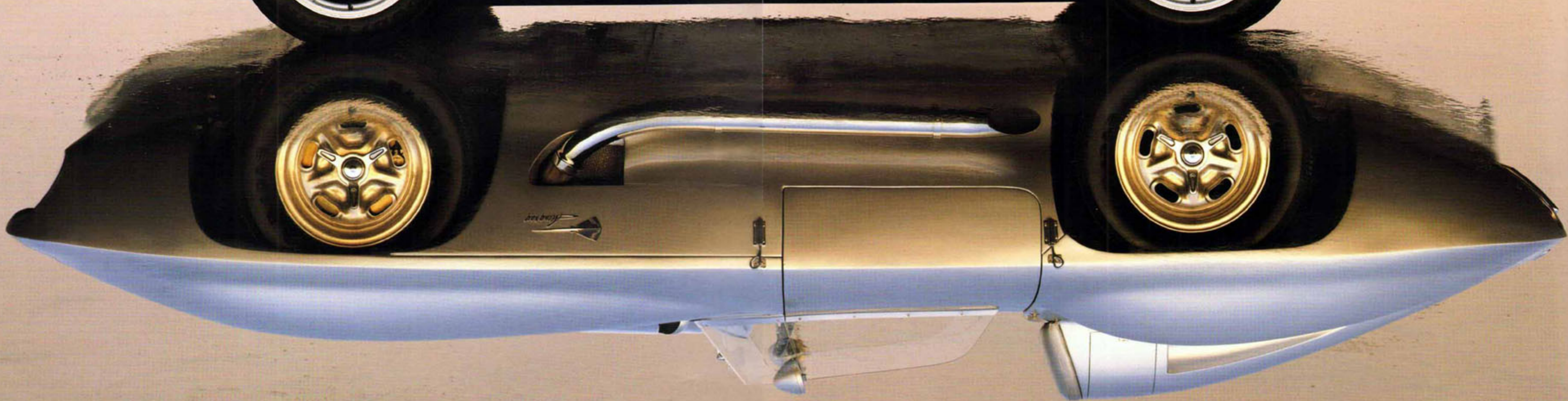
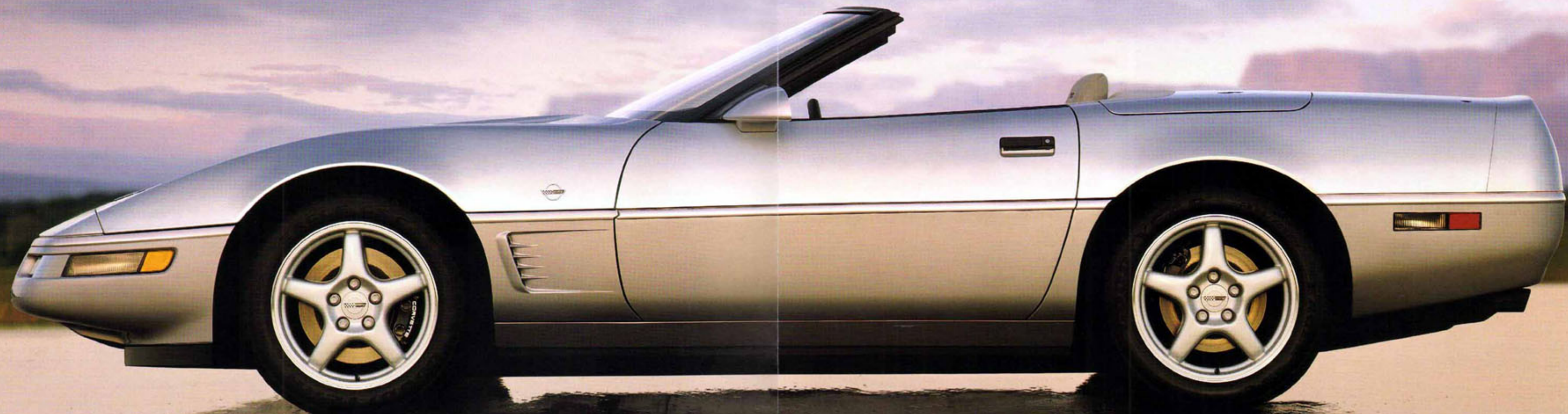
### ***CORVETTE COLLECTOR EDITION.***

Sebring Silver. To a Corvette aficionado, it's a color that will be forever linked with such classics as the first Sting Ray racer of 1959 and the legendary 1963 split-window coupe.

Now Sebring Silver is back, adding a special brilliance to the 1996 Corvette Collector Edition. Available on Coupe or Convertible, details include distinctive chrome emblems outside, and perforated sport seats with "Collector Edition" embroidery inside. These leather seating surfaces are offered in your choice of Black, Gray or Torch Red.

This is the final season for the fourth-generation Corvette, and we invite you to celebrate with Silver.







**CORVETTE COLLECTOR EDITION COUPE.**

What better place to pose a '96 Collector Edition Coupe than in front of the National Corvette Museum in Bowling Green, Kentucky. It's a Corvette lover's dream tour, featuring the history of America's favorite sports car, 50 classic Corvettes from 1953 to the present, a collection of vintage advertising and catalogs, and a Corvette-themed gift shop.

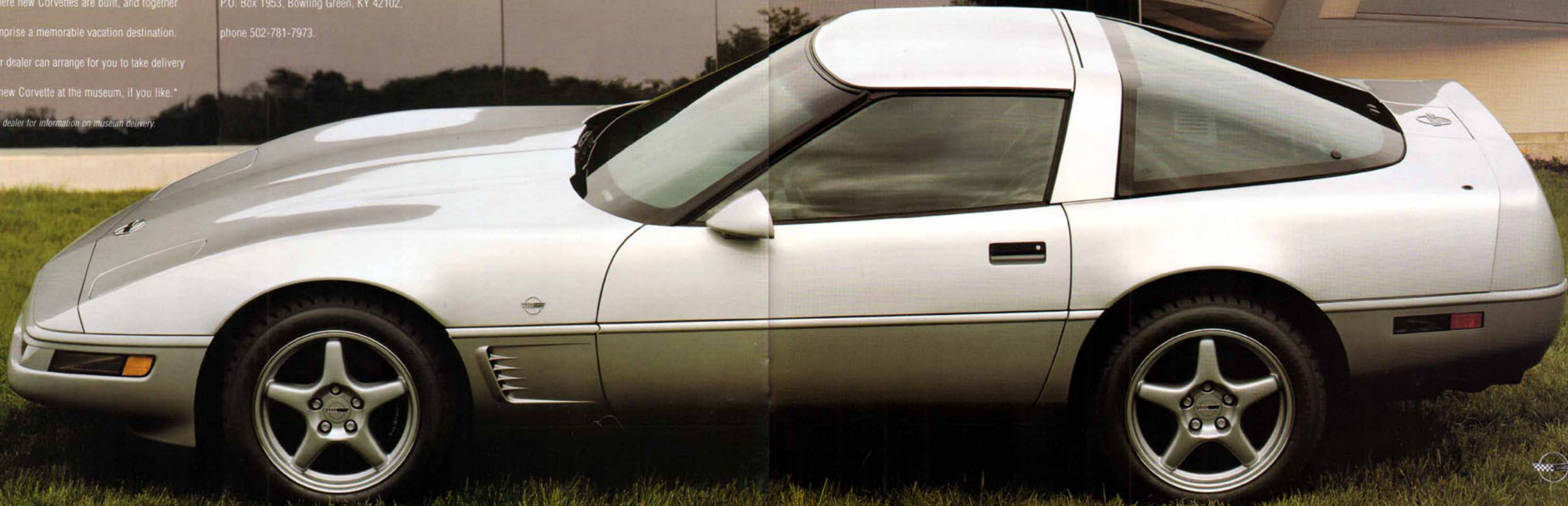
The museum is adjacent to the GM assembly plant where new Corvettes are built, and together they comprise a memorable vacation destination.

Your dealer can arrange for you to take delivery of your new Corvette at the museum, if you like.\*

\*See your dealer for information on museum delivery.

For more information, see your Chevrolet dealer, or contact the National Corvette Museum at P.O. Box 1953, Bowling Green, KY 42102, phone 502-781-7973.

THE NATIONAL CORVETTE MUSEUM



## **CORVETTE COUPE.**

You don't really need a list of reasons to buy a Corvette Coupe. You already know this Corvette has a world-class V8 engine under the hood and, not coincidentally, a fun-to-drive factor that's right over the top.

Significantly, Corvette is also one of the best-equipped sports cars in the world. Standard performance features include four-wheel disc brakes with ABS, Acceleration Slip Regulation (traction control), Goodyear Eagle GS-C tires, and a unique-to-Corvette 5-link independent rear suspension.

Someday, some non-enthusiast may ask you why you drive a Corvette. There's no use explaining. Just say you've got your reasons.



## **CORVETTE CONVERTIBLE.**

In the beginning, there was only one Corvette — the convertible, a.k.a. roadster, ragtop, drop-top.

And it was fun.

There are a substantial number of Corvette enthusiasts who wouldn't have their Corvette any other way. Convertible cognoscenti will appreciate the easy-folding top with a glass rear window (including electric defogger), and a sizable storage area behind the rear seats. The top is made of rich Cambria cloth (in black or beige) or durable vinyl (in white). A removable hardtop is optional.

If you love cool convertibles on warm summer nights, you really should drive this car.

It will be fun.





## ***CORVETTE INTERIOR.***

The moment you sit down and buckle up, you know you want to drive this car.

We've had a lot of practice pleasing driving enthusiasts, and we think you'll appreciate the thought that went into this interior.

Corvette bucket seats are deeply bolstered, form-fitting and leather-trimmed. The standard interior is shown here; the optional Sport interior is shown on pages 8-9.

Standard equipment in every Corvette includes power windows with driver's Express-Down feature, power door locks, electronic speed control, and a six-speaker AM/FM stereo with cassette tape player. The acclaimed Delco/Bose Gold Series AM/FM stereo — with cassette tape player, or with CD and cassette tape players — is optional.



## THE CORVETTE VIEWPOINT.

In a Corvette, you are surrounded by a thoughtfully designed, ergonomically correct driving environment. Instrumentation and controls are grouped directly in front of you. Gauges communicate instantly and clearly. The deeply contoured seat and Tilt-Wheel™ Adjustable Steering Column adjust to your driving style.

In every way, this is sports car driving the way it should be.



The Delco/Bose Gold Series sound system with compact disc player and cassette tape player is optional.

## **PERFORMANCE REVOLUTION. THE NEW LT4.**

What's hotter than an LT1 Corvette? Only the new-for-1996 LT4 Corvette. It will capture the attention of anyone who enjoys horsepower and torque in massive quantities.

Basic architecture remains true to small-block tradition. Displacement is 350 cubic inches.

But the advancements include a new high-compression cylinder head, a recontoured camshaft, new fuel injectors and a performance crankshaft. Add a host of other changes, and you've got 330 high-winding horsepower at 5800 rpm, and 340 lb.-ft. of torque at 4500 rpm.

Bottom line: we've taken an engine that was already world-class and added "bandwidth." In other words, ample torque at the low end, and even more horsepower at a higher rpm level than ever before. You'll love it.



## A GUIDE TO CORVETTE PERFORMANCE.

For 1996, Corvette buyers have two performance choices, the LT1 and the new LT4. Both Corvette engines feature advanced Sequential Fuel Injection, computer-controlled ignition timing, a long-life serpentine accessory drive belt and platinum-tip spark plugs. This is technology so advanced you can travel up to 100,000 miles before the first scheduled tune-up.\*

\*Maintenance needs vary with different uses and conditions. See your owner's manual for more information.

**LT1/AUTOMATIC.** Horsepower: 300 at 5000 rpm.



Torque: 335 lb.-ft. at 4000 rpm. The LT1 that powers Corvette is America's favorite

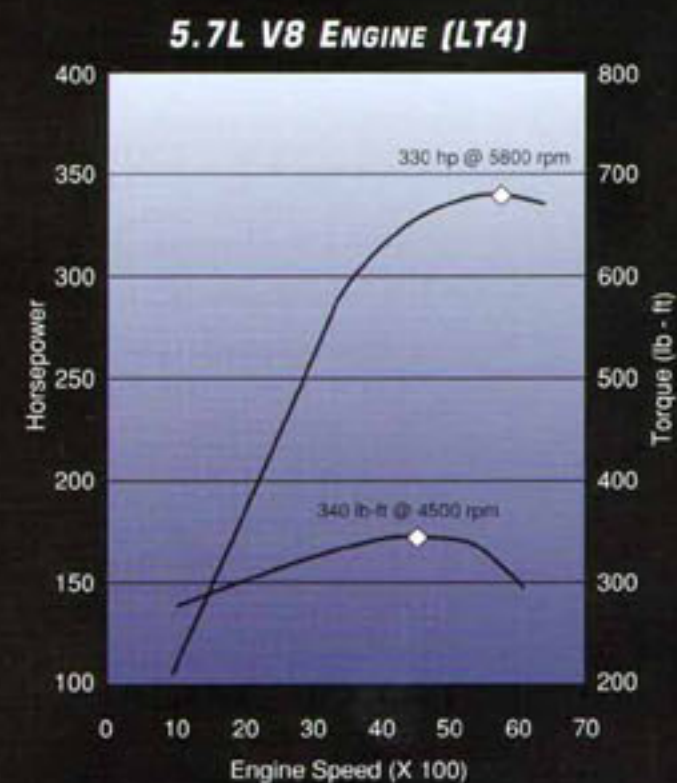
performance V8. For 1996, the LT1 is available only with an electronically controlled 4-speed automatic transmission. The LT1 is standard in Corvette Coupe, Convertible and Collector Edition models. It is not available in the Grand Sport.

**LT4/6-SPEED.** Horsepower: 330 at 5800 rpm.

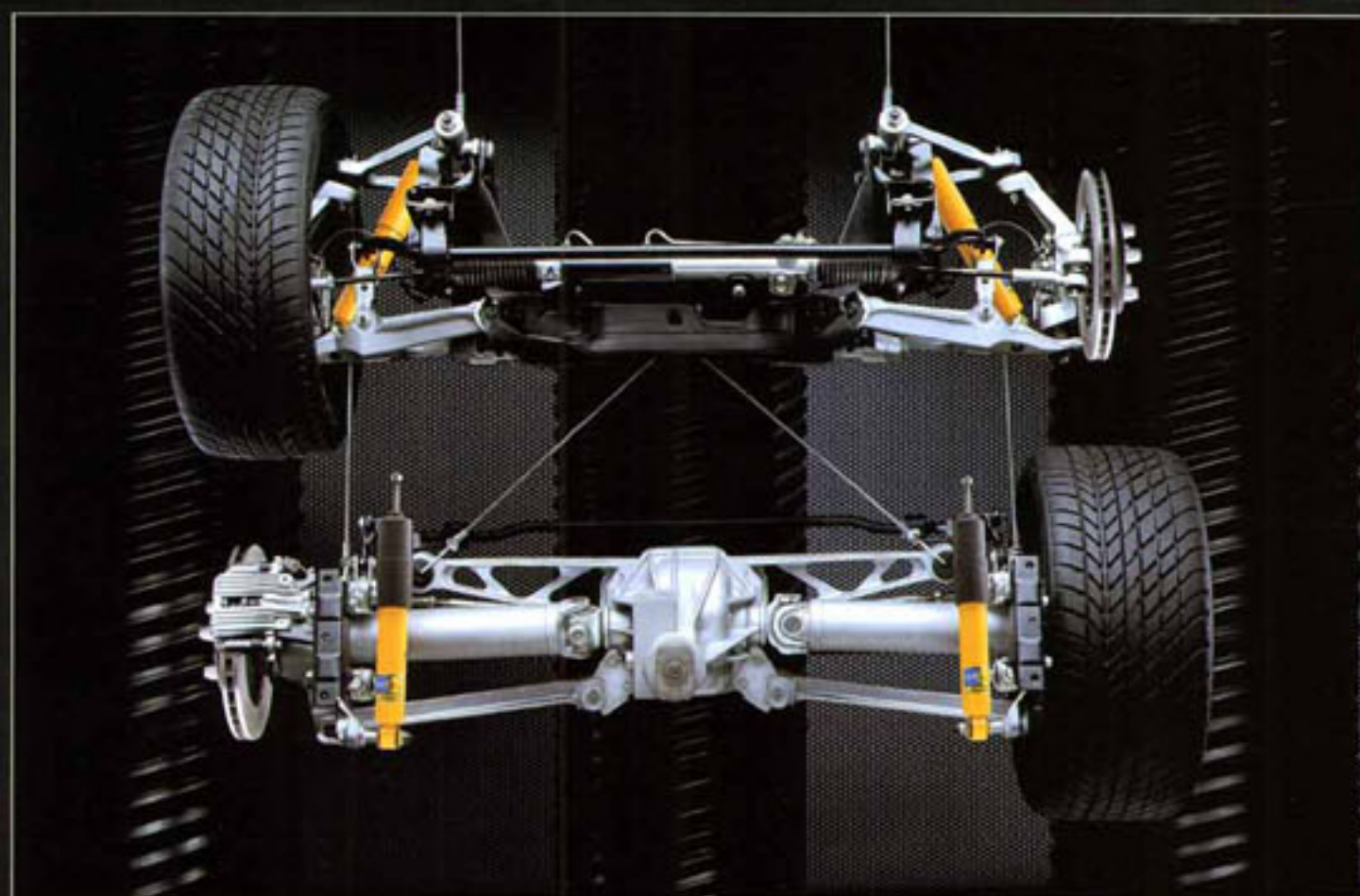


Torque: 340 lb.-ft. at 4500 rpm. It's everything the LT1 is and more. The

LT4 is available only with the 6-speed manual transmission. It is a required option in the Grand Sport and optional in Coupe, Convertible and Collector Edition models.



The LT4 V8 delivers impressive torque and horsepower, through a remarkably wide RPM range.



A four-wheel independent suspension contributes to the poised, balanced feel of Corvette.

**CORVETTE RIDE AND RESPONSE.** Corvette ride and response were already exemplary. For 1996, we've improved both in some new and innovative ways. Choose from three suspension options:

**FE1.** The standard Corvette suspension provides an impressively smooth ride without sacrificing road-holding capability. Features include tuned Bilstein shocks and heavy-duty four-wheel disc brakes. Standard: a sophisticated four-wheel independent suspension with lightweight aluminum components, four-wheel anti-lock brakes, and Acceleration Slip Regulation (traction control).

**F45 OPTION. REAL TIME DAMPING COMES TO CORVETTE.** This new "thinking" suspension option is really the best of all worlds for the grand touring enthusiast. The secret is new computer-controlled Selective Real Time Damping (RTD) with driver-adjustable shocks. RTD provides a comfortable, very compliant ride at low speeds, and automatically increases shock absorber rates in "real time" — 10 to 15 milliseconds — as speed increases. F45 is optional on all models.

**Z51 OPTION.** Z51 is not for everyone, but it is the suspension you'll want if you participate in sanctioned, off-road racing events. Componentry includes stiffer springs, stabilizer bars and bushings.

**EXTENDED MOBILITY TIRES.** These revolutionary Goodyear Eagle GS-C EMT tires are optional on both the Coupe and the Convertible. With EMTs, you can drive up to 200 miles at 55 mph on completely deflated tires, so chances are you'll never change a tire at the side of the road again. EMT tires are not available on Grand Sport Coupe or with Z51 option.





## **CORVETTE SAFETY.**

Corvette has the safety features you expect in one of the world's most advanced automobiles. The standard technology includes dual air bags, an energy-absorbing steering column and instrument panel, energy-absorbing controlled crush zones in the front and rear body structures, and safety-cage construction surrounding the passenger compartment.

There's yet another vitally important way Corvette helps make driving safe and secure: sophisticated, active safety features that help you avoid collisions before they happen. These features include standard four-wheel anti-lock brakes and an advanced traction control system (Acceleration Slip Regulation).

A special note: the most important safety feature in any vehicle is the driver. Always drive courteously, and always wear safety belts.

### **CORVETTE SAFETY FEATURES.**

#### **OCCUPANT PROTECTION.**

- Supplemental Inflatable Restraint: manual lap/shoulder safety belts and air bags, driver/passenger
- Energy-absorbing steering column
- Energy-absorbing instrument panel
- Interlocking door latches
- Folding seat locks, inertia type
- Safety armrests
- Breakaway inside rearview mirror
- Security door locks and door-retention components

- Laminated windshield glass, urethane-bonded
- Head restraints (integral)
- Side-door beams
- Passenger-guard inside door-lock handles
- Front and rear crush zones.

#### **ACCIDENT AVOIDANCE.**

- Side-marker lamps and reflectors
- Parking lamps
- Four-way hazard-warning flashers
- Backup lamps

- Directional signal control
- Windshield defrosters, washers and multi-speed wipers
- Inside day/night rearview mirror
- Brake system with dual master cylinder plus warning light
- Center high-mounted stop lamp
- Starter safety switch
- Low-glare finish (inside windshield moldings, wiper arms and blades, metallic steering wheel surfaces)
- Illuminated heater and defroster controls

- Tires with built-in tread-wear indicators
- Audible disc brake lining-wear indicators
- Anti-lock brakes
- Traction control
- Brake/transmission shift interlock (automatic transmission only).

#### **THEFT DETERRENCE.**

- Visible vehicle identification number
- Laser etched VIN plate
- Theft-deterrent key-locking system
- PASS-Key II personal security system
- Remote inside hood release.



## GENUINE CUSTOMER CARE. YOU NEVER TRAVEL ALONE.

Your complete satisfaction with your new Chevrolet — from the day you buy it to the day you sell it — is really what it's all about. Genuine Customer Care means we'll be here when you need us, no matter where you are in the U.S.A.

Genuine Customer Care is a comprehensive owner-protection plan that includes the following:

### BUMPER TO BUMPER WARRANTY.

The GM 3-year/36,000-mile (whichever comes first) limited warranty covers repairs for all 1996 Corvettes, including labor and parts, to correct any defects in material or workmanship occurring during the warranty period. Warranty features include air conditioning repair, towing and no-cost warranty transfer. There is also emissions-control system coverage, which varies by geographical region. There is no deductible.

The Corvette body is warranted for rust-through protection for 6 years or 100,000 miles (whichever comes first). Application of additional rust-inhibiting materials is not required under the corrosion coverage and none is recommended. See your Chevrolet dealer for full terms of this limited warranty.

### 24-HOUR ROADSIDE ASSISTANCE.

Lost? We'll help you find your way. Locked out? We'll get you back in your car. Out of gas? We'll get you gas. Roadside Assistance is provided through a toll-free number (1-800-CHEV-USA) 24 hours a day, 365 days a year. Roadside Assistance offers two levels of service, *Basic Care* and *Courtesy Care*.

*Roadside Basic Care* provides:

- Free towing for warranty repairs (to closest dealer)
- Over-the-phone basic technical advice
- Available dealer services at reasonable costs (i.e., wrecker services, locksmith/key service, glass repair, etc.).

*Roadside Basic Care* covers you for as long as you own your Corvette.

*Roadside Courtesy Care* provides all the features of *Roadside Basic Care*, plus:

- Free towing (to closest dealer)
- Free locksmith/key service (when keys are lost on the road or locked inside)
- Free flat tire service and jump start
- Free fuel delivery on the road.

*Courtesy Care* is available to you for a period of 3 years or 36,000 miles (whichever comes first).

### COURTESY TRANSPORTATION.

Customers who purchase or lease a 1996 Corvette will be able to take advantage of *Courtesy Transportation* at no additional charge when their vehicles are left at a participating dealership for repairs covered under the 3-year/36,000-mile limited warranty. See your participating dealer for details.

## A WORD ABOUT...

### CUSTOMER ASSISTANCE.

The Chevrolet Customer Assistance Center (CAC) has a special toll-free number (1-800-222-1020). It puts you in contact with Chevrolet experts who can handle any product/service question or problem you may have.

### GM PROTECTION PLAN.

The available GM Protection Plan offers service protection in addition to that provided by GM's new-vehicle limited warranty. Ask your dealer about it. Coverage available only in the U.S. and Canada.

### ENGINES.

Corvettes are equipped with engines produced by different operating units of GM, its subsidiaries or suppliers to GM worldwide.

### CORROSION PROTECTION.

Corvettes are designed and built to resist corrosion. All body sheet-metal components are warranted against rust-through corrosion for 6 years or 100,000 miles, whichever comes first. Application of additional rust-inhibiting materials is not required under the corrosion coverage and none is recommended.

### ASSEMBLY.

Corvettes are assembled by different operating units of General Motors, its subsidiaries or suppliers to GM worldwide. Chevrolet incorporates thousands of components produced by different operating units of GM, its subsidiaries or suppliers to GM worldwide. We sometimes find it necessary to produce Corvettes with different or differently sourced components than originally scheduled. All such components have been approved for use in Corvettes and will provide the quality performance associated with the Chevrolet name. Since some options may be unavailable when your vehicle is assembled, we suggest that you verify that your vehicle includes the equipment you ordered or, if there are changes, that they are acceptable to you.

### UPDATED SERVICE INFORMATION.

Chevrolet regularly sends its dealers useful service bulletins about Chevrolet products. Chevrolet monitors product performance in the field. We then prepare bulletins for servicing our products better. Now you can get these bulletins, too. Ask your dealer. To get ordering information, call toll free 1-800-551-4123.

### IMPORTANT: A WORD ABOUT THIS CATALOG.

We have tried to make this catalog as comprehensive and factual as possible. We reserve the right, however, to make changes at any time, without notice, in prices, colors, materials, equipment, specifications, models and availability. Since some information may have been updated since the time of printing, please check with your Chevrolet dealer for complete details.

### TURN PLASTIC INTO STEEL WITH THE GM CARD®.



The GM MasterCard®, with no annual fee, is the revolutionary financial vehicle specifically designed to help put you behind the wheel. Every time you use it, GM will credit 5% of your purchase toward buying or leasing the GM car or truck of your dreams. It could mean saving hundreds, even thousands of dollars over and above any other discounts or rebates. Call 1-800-8GM-CARD for more information, including annual limits and restrictions.

### SMARTLEASE™ BY GMAC



SMARTLEASE makes it easy to enjoy the technology, style and fun of a brand-new Chevy Corvette. With SMARTLEASE, qualified customers can be approved in about one hour, and you enjoy low SMARTLEASE monthly payments. Plus, SMARTLEASE offers you choices at the end of your lease. You can either buy your Corvette at a price guaranteed up front, or return your vehicle with no other obligations — assuming the terms of the lease have been met. For more information about SMARTLEASE, or any of the other quality GMAC financing options, see your Chevrolet dealer or call 1-800-32-SMART.

  
GENUINE CHEVROLET

  
BUCKLE UP AMERICA

General Motors, GM, the GM Emblem, Chevrolet, the Chevrolet Emblem, Corvette, the Corvette Emblem, ETR, Sting Ray, Solar-Ray and ZR-1 are registered trademarks and Chevy is a trademark of the General Motors Corporation. Scotchgard is a trademark of the 3M Corporation. Delco and PASS-Key 1 are registered trademarks of Delco Electronics Corp. GMAC and SMARTLEASE are registered trademarks of the General Motors Acceptance Corporation. ©1995 General Motors Corporation. All rights reserved.

Printed in U.S.A.

August 1995

## CORVETTE COLORS AND TRIM.

Recommended Interior/Exterior Color Combinations.

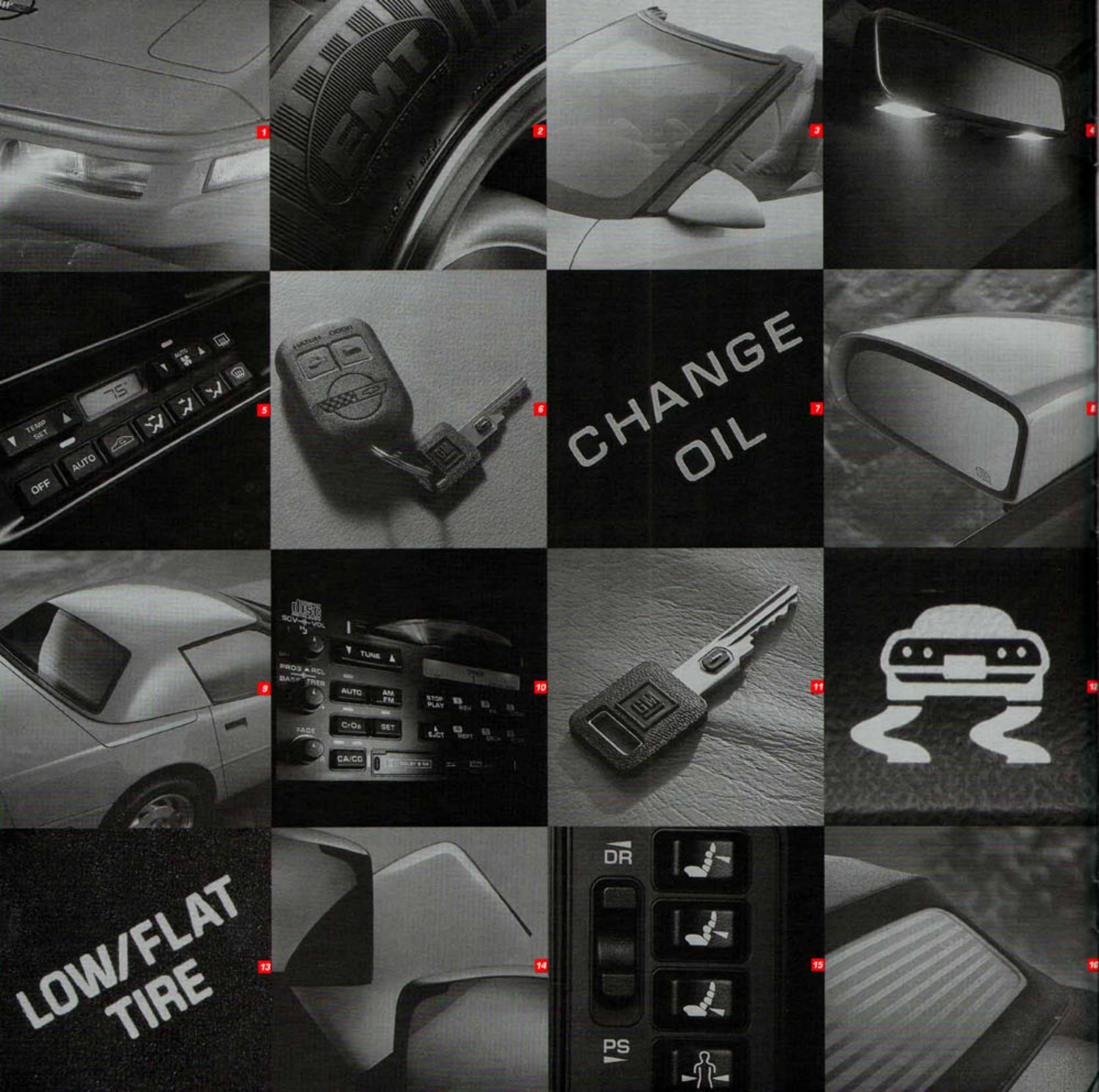
EXTERIOR COLORS	INTERIOR COLORS			
	Black	Light Beige	Torch Red	Light Gray
Black	<input type="checkbox"/>	<input checked="" type="checkbox"/>	<input checked="" type="checkbox"/>	<input type="checkbox"/>
Arctic White	<input type="checkbox"/>	<input checked="" type="checkbox"/>	<input checked="" type="checkbox"/>	<input type="checkbox"/>
Bright Aqua Metallic	<input type="checkbox"/>	<input checked="" type="checkbox"/>	<input type="checkbox"/>	<input type="checkbox"/>
Dark Purple Metallic	<input type="checkbox"/>	<input checked="" type="checkbox"/>	<input type="checkbox"/>	<input type="checkbox"/>
Competition Yellow	<input type="checkbox"/>	<input checked="" type="checkbox"/>	<input type="checkbox"/>	<input type="checkbox"/>
Polo Green II Metallic	<input type="checkbox"/>	<input checked="" type="checkbox"/>	<input type="checkbox"/>	<input type="checkbox"/>
Torch Red	<input type="checkbox"/>	<input checked="" type="checkbox"/>	<input checked="" type="checkbox"/>	<input type="checkbox"/>
Sebring Silver Metallic*	<input type="checkbox"/>	<input checked="" type="checkbox"/>	<input checked="" type="checkbox"/>	<input type="checkbox"/>
Admiral Blue Metallic†	<input type="checkbox"/>	<input checked="" type="checkbox"/>	<input checked="" type="checkbox"/>	<input checked="" type="checkbox"/>

\*Collector Edition only. †Grand Sport Edition only.  
\*\*Torch Red/Black on Grand Sport Edition.

The Collector Edition is only available in Sebring Silver Metallic and the Grand Sport is only available in Admiral Blue Metallic.

Convertible tops available in Light Beige or Black fabric and Arctic White vinyl. Black only on Collector Edition Convertible. White only on Grand Sport Edition Convertible.





## CORVETTE BUYER'S GUIDE.

- 1 Front cornering lamps and halogen fog lamps are standard on all models.
- 2 Optional Extended Mobility Tires will "run flat" for up to 200 miles at 55 mph.
- 3 Standard Solar-Ray windshield reflects sun's rays, reducing interior heat buildup.
- 4 Interior courtesy lights are positioned on the rearview mirror, below the instrument panel, and in door panels.
- 5 Electronic temperature control for the air conditioning is optional.
- 6 Remote Passive Keyless Entry, standard. Locks and unlocks doors automatically.

- 7 A change-oil indicator lets you know when it's time to change your oil. Standard.
- 8 Electric heated outside rearview mirrors are standard.
- 9 The optional body-color removable hardtop adds to the all-weather appeal of Corvette Convertible (not available with Grand Sport Edition).
- 10 Optional Delco/Bose stereo includes both a CD player and cassette tape player.
- 11 GM's innovative PASS-Key II theft-deterrent system and horn alarm are standard equipment. PASS-Key II is a totally passive system; only your special coded ignition key starts your Corvette.

- 12 Acceleration Slip Regulation (traction control) is standard; enhances performance in wet-weather conditions.
- 13 Optional tire-pressure-warning system illuminates instrument panel telltale light if pressure in any tire drops below 25 psi.
- 14 A body-color removable roof panel is standard on Corvette Coupe and a tinted glass panel is optional.
- 15 Optional Sport seats include power six-way adjuster and lumbar support.
- 16 The Convertible's folding top features a glass rear window and electric defogger.

### STANDARDS AND OPTIONS.

#### GRAND SPORT PACKAGE.

This package is available on Coupe or Convertible, and includes the following: 17" 5-spoke aluminum wheels painted black, exclusive Admiral Blue Exterior color features a distinctive center white stripe and red hash marks on the left front fender, "Corvette" lettering in bright aluminum on the front calipers.

#### COLLECTOR EDITION PACKAGE.

This package is available on Coupe or Convertible, and includes the following: 17" 5-spoke aluminum wheels, exclusive Sebring Silver exterior color, chrome emblems, perforated leather Sport seats with Collector Edition embroidery.

	COUPE	CONVERTIBLE
<b>EXTERIOR</b>		
Base-coat/clear-coat paint	S	S
Corrosion-proof fiberglass body panels	S	S
Dual electric remote-control heated sport mirrors	S	S
Dual halogen fog lamps	S	S
Front cornering lamps	S	S
One-piece removable roof panel	S	—
Removable hardtop	—	0
Retractable halogen headlamps	S	S
Tinted and flush-mounted glass	S	—
Transparent roof panel	0*	—
<b>INTERIOR</b>		
Air bags (driver and passenger)	S	S
Air conditioning	S	S
Air conditioning (electronic control)	0**	0**
Day/night rearview mirror with integral map light	S	S
Electric rear-window defogger	S	S
Electronic speed control	S	S
Headlamps-on reminder	S	S
Illuminated dual visor mirrors	S	S
Intermittent windshield wipers	S	S
PASS-Key II theft-deterrent system	S	S
Power door locks	S	S
Power windows with driver's Express-Down feature	S	S

#### INTERIOR (CONTINUED)

	COUPE	CONVERTIBLE
Remote Passive Keyless Entry system	S	S
Scotchgard™ Fabric Protector (on floor carpeting and floor mats)	S	S
Seats, leather seating surfaces	S	S
Seats, Sport, leather seating surfaces	0	0
Seat, power driver six-way adjustable	0	0
Seats, power six-way adjustable	0**	0**
Theft-deterrent horn alarm	S	S
Tilt-Wheel™ Adjustable Steering Column	S	S

#### POWER TEAM/CHASSIS/MECHANICAL

	COUPE	CONVERTIBLE
5.7 Liter LT1 V8 engine with Sequential Fuel Injection and aluminum cylinder heads	S*	S*
5.7 Liter LT4 V8 with aluminum cylinder heads and Sequential Fuel Injection	0	0
6-speed manual transmission (LT4 only)	0†	0†
4-speed automatic transmission (LT1 only)	S*	S*
Z51 Performance Handling Package (includes 17" x 9.5" wheels and P275/40ZR-17 tires)	0	—
F45 Selective Real Time Damping	0	0
Acceleration Slip Regulation (traction control)	S	S
Bosch ABS V four-wheel anti-lock brake system	S	S
Fully independent suspension with transverse front and rear springs	S	S
Limited slip differential	S	S
Power rack-and-pinion steering	S	S
Power steering cooler	S	S
Aluminized stainless-steel exhaust system	S	S

#### WHEELS

	COUPE	CONVERTIBLE
17" x 8.5" aluminum (front)		
17" x 9.5" aluminum (rear)	S	S
(Grand Sport Coupe only): 17" x 9.5" aluminum (front)		
17" x 11" aluminum (rear)	S	S

#### TIRES

	COUPE	CONVERTIBLE
Goodyear Eagle GS-C (P255/45ZR-17 front) (P285/40ZR-17 rear)	S	S
Goodyear Eagle GS-C (Grand Sport Coupe only) (P275/40ZR-17 front) (P315/35ZR-17 rear)	S	S
Goodyear Eagle GS-C EMT Extended Mobility (requires low-tire-pressure-warning system, not available on Grand Sport Coupe or with Z51 Handling Package)	0	0
Spare tire delete	0	0

NOTE: Do not use tire chains; they can damage your car.

#### DELCO ELECTRONICS ETR SOUND SYSTEMS

Electronically tuned AM/FM stereo with cassette player, power antenna, extended-range speakers and digital clock	S	S
Delco/Bose AM/FM stereo with cassette player, power antenna and digital clock	0**	0**
Delco/Bose AM/FM stereo with cassette player, compact disc player, power antenna and digital clock	0	0

#### EXTERIOR DIMENSIONS (IN.)

	COUPE	CONVERTIBLE
Wheelbase	96.2	96.2
Length (overall)	178.5	178.5
Width (overall)	70.7	73.1
Height	46.3	47.3
Tread width — front	57.7	57.7
Tread width — rear	59.1	60.6

#### INTERIOR DIMENSIONS (IN.)

	COUPE	CONVERTIBLE
Head room	36.5	36.5
Leg room	42.0	42.0
Shoulder room	53.9	53.9
Hip room	50.8	50.8

#### CAPACITIES

	COUPE	CONVERTIBLE
Passenger capacity	2	2
Cargo capacity (cu. ft.)	6.6	12.6
Fuel tank (gal.)	20.0	20.0

S — Standard. 0 — Optional. \*Not available with Grand Sport Edition. †Standard on Grand Sport Edition. \*\*Required options on Grand Sport and Collector Editions.

