

1996 Chevrolet Caprice Classic



Caprice Classic. It's An American Original.

Caprice Classic by Chevrolet is the uniquely American, uncompromised full-size car with the spaciousness, proven durability and smooth V8 power you expect.

Caprice Classic's proven Full Coil suspension and full-frame construction provide an ultra-smooth ride and effortless handling.

The standard 4300 V8 engine with Sequential Fuel Injection and electronically controlled four-speed automatic transmission delivers virtually seamless performance. For even more power, the 5.7 Liter LT1 V8 is optional.

When it comes to luxury that's affordable, there's nothing else like Caprice Classic. It's an American original, and it's Genuine Chevrolet.



Caprice Classic Sedan in Dark Green-Gray Metallic with optional aluminum wheels and white-stripe tires.

Spacious, Quiet, Luxurious.

You want a quiet ride, comfort for six passengers, and luxurious appointments. Caprice Classic is the affordable full-size car that lets you have it all.

Choose from a Custom Cloth interior or optional leather seating surfaces. Either way, you'll enjoy a reclining 55/45 split-bench front seat, front and rear center armrests, door courtesy lamps and storage pockets on front seat-backs.

Standard conveniences include an easy-to-read digital speedometer, Tilt-Wheel™ Adjustable Steering Column, delayed illuminated entry system and pull-out cup holder. Air conditioning and an AM/FM stereo with cassette tape player are also standard.

You could settle for less than the quiet, spacious world of Caprice Classic. But why would you want to?



Shown above: Caprice Classic Custom Cloth interior in Gray. Shown at right: Caprice Classic interior with optional leather seating surfaces. Other options shown.



Caprice Classic Wagon. In A Class By Itself.

Caprice Classic for 1996 is the roomiest, most powerful wagon you can buy. This accommodating Chevrolet can seat up to eight people, or carry up to 92.7 cu. ft. of cargo with the rear seats folded flat.

With the standard 5.7 Liter LT1 V8 engine, a properly equipped Caprice Classic Wagon will tow up to 5000 lbs.

The Custom Cloth interior is luxurious and comfortable, with a front center armrest and reclining front-passenger seat.

Convenience features include a two-way tailgate, swing-up rear window with wiper and washer, and an optional lockable storage compartment under the rear floor.

Yes, you can take it with you, in a Caprice Classic Wagon.



Caprice Classic Wagon in Light Driftwood Metallic with simulated woodgrain panels and other options.

Genuine Customer Care. You Never Travel Alone.

Your complete satisfaction with your new Caprice Classic — from the day you buy it to the day you sell it — is really what it's all about. Genuine Customer Care means we'll be here when you need us, no matter where you are in the U.S.A.

Genuine Customer Care is a comprehensive owner-protection plan that includes the following:

Bumper to Bumper Warranty

The GM 3-year/36,000-mile (whichever comes first) limited warranty



covers repairs for all 1996 Caprice Classics, including labor and parts, to correct any defects in material or workmanship occurring during the warranty period. Warranty features include air conditioning repair, towing and no-cost warranty transfer. There is also emissions-control system coverage, which varies by geographical region. *There is no deductible.*

The Caprice Classic body is warranted for rust-through protection for 6 years or 100,000 miles (whichever

comes first). Application of additional rust-inhibiting materials is not required under the corrosion coverage and none is recommended. See your Chevrolet dealer for full terms of this limited warranty.

24-Hour Roadside Assistance

Lost? We'll help you find your way. Locked out? We'll get you back in your car. Out of gas?



We'll get you gas. Roadside Assistance is provided through a toll-free number (1-800-CHEV-USA) 24 hours a day, 365 days a year. Roadside Assistance offers two levels of service, *Basic Care* and *Courtesy Care*.

Roadside Basic Care provides:

- Free towing for warranty repairs (to closest dealer)
- Over-the-phone basic technical advice
- Available dealer services at reasonable costs (i.e., wrecker services, locksmith/key service, glass repair, etc.).

Roadside Basic Care covers you for as long as you own your Caprice Classic.

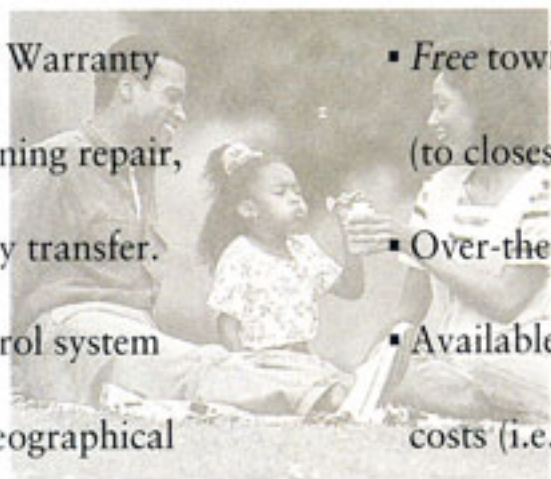
Roadside Courtesy Care provides all the features of Roadside Basic Care, plus:

- Free towing (to closest dealer)
- Free locksmith/key service (when keys are lost on the road or locked inside)
- Free flat tire service and jump start
- Free fuel delivery on the road.

Roadside Courtesy Care is available to you for a period of 3 years or 36,000 miles (whichever comes first).

Courtesy Transportation

Customers who purchase or lease a 1996 Caprice Classic will be able to take advantage of Courtesy Transportation at no additional charge when their vehicles are left at a participating dealership for repairs covered under the 3-year/36,000-mile limited warranty. See your participating dealer for details.



Safety. We've Got You Surrounded.

When you place your loved ones in a Caprice Classic, you are surrounding them with a comprehensive package that includes safety-cage construction, energy-absorbing front and rear crush zones and a reinforced perimeter frame. Dual air bags and a four-wheel anti-lock brake system are standard in every 1996 Caprice Classic.

At Chevrolet, we believe you shouldn't have to buy an expensive car to get the safety features you need. And that's what makes Caprice Classic a Genuine Chevrolet.

Dual Air Bags

Driver and front-passenger air bags are standard. These air bags have been designed to provide you with enhanced protection when used in conjunction with safety belts. A special note: always wear safety belts, even with air bags.

Four-Wheel Anti-Lock Brakes

A power-assisted four-wheel anti-lock brake system (ABS) is standard in every Caprice Classic. ABS prevents wheel lockup while braking and is designed to help you maintain steering control and prevent skidding while braking on most slippery surfaces.

Safety-Cage Construction

A rugged steel safety cage surrounds the entire Caprice Classic passenger compartment. This cage is so strong it helps Caprice Classic meet 1997 Federal standards for side-impact protection, today.

Child Security Rear-Door Locks

Standard in every Caprice Classic: child security rear-door locks that, when engaged, prevent the rear doors from being opened from the inside. Standard rear-seat safety belt comfort guides make wearing safety belts more comfortable for children who have outgrown child restraints.

Energy-Absorbing Crush Zones

In collisions, the front and rear ends of the Caprice Classic are designed to help absorb energy in a controlled manner, so that the integrity of the passenger compartment can be maintained.



Caprice Classic **Features And Options**



PASS-Key II

Standard. This is a totally passive theft-deterrent system. Only your special coded key starts your Caprice Classic. If an attempt is made to start the car without the proper key, the ignition system is disabled.



Cup Holder

Standard. A convenient slide-out cup holder is designed to hold a large cup or soft drink can.

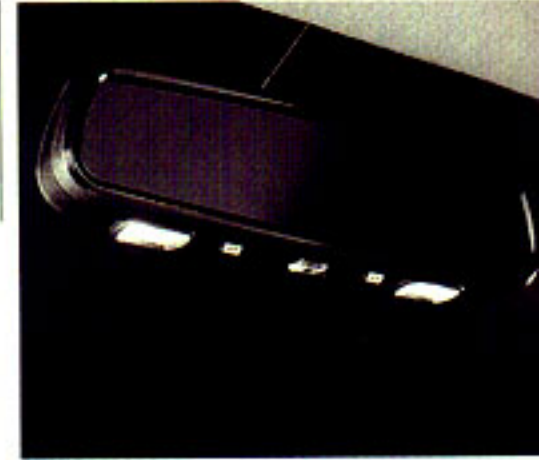
Stereo With CD Player

Optional. Features of this Delco Electronics sound system include Speed-Compensated Volume and Automatic Tone Control, which tailors equalization to the type of music or voice being heard.



Reading Lamps

Optional. Dual reading lamps are a convenience feature available on all models.



Remote Keyless Entry

Optional. Lock or unlock your car, turn on the interior lights or open the trunk from up to 30 feet away with Caprice Classic's Remote Keyless Entry system.

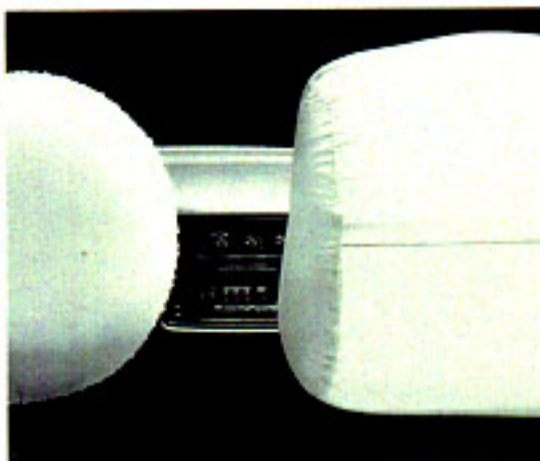
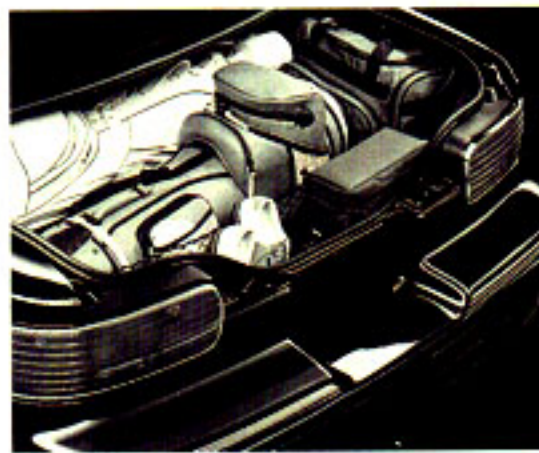


Four-Wheel ABS

Standard. A four-wheel anti-lock brake system helps maintain steering control and prevents skidding when braking on most slippery surfaces.

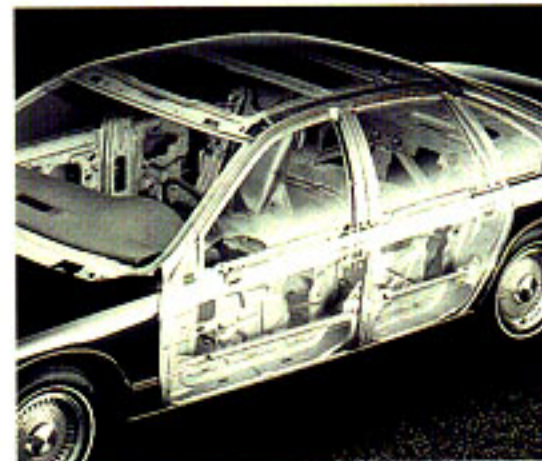
Spacious Trunk

Caprice Classic features a roomy 20.4-cu.-ft. trunk. An optional convenience net helps keep small packages secure.



Dual Air Bags

Standard. Chevrolet uses 24 times as many tests and evaluations as the government requires for air bags, and in the '96 Caprice Classic system, air bag sensor contacts are gold-plated to enhance durability.



Safety-Cage Construction

Standard. A rigid safety cage surrounds the entire passenger compartment of Caprice Classic. Steel side-door beams help complete this safety envelope.

Caprice Classic Buyer's Guide

Special-Value Packages

NOTE: These optional Special-Value Packages help simplify the buying process. Just choose the 1996 Caprice Classic Preferred Equipment Group containing the equipment you desire. You may also add selected individual options (see Standards & Options chart for model availability). Some restrictions may apply. Please see your salesperson for details.

SPECIAL-VALUE PACKAGE NUMBER	Sedan			Wagon 1
	1	2	3	
Power Windows	■	■	■	■
Power Trunk Opener	■	■	■	
Electronic Speed Control with Resume Speed	■	■	■	■
Wire Wheel Covers				■
Deluxe Wheel Covers	■			
Full-Size Spare Tire	■	■	■	■
Rear-Window Defogger	■	■	■	■
Heat-Reflective Windshield			■	■
P215/75R-15 W/S Tires	■	■	■	
Rearview Mirror, Automatic Day/Night (includes Dual Reading Lamps)	■	■	■	■
Mirrors, Dual Remote, Electric, Heated	■	■	■	■
Power Antenna	■	■	■	■
Mirror, RH Covered Visor, Illuminated		■	■	■
Power Seat, Driver and Front-Passenger		■	■	■
Aluminum Wheels		■	■	
Reading Lamps, Rear Compartment	■	■	■	■
Cornering Lamps		■	■	
Twilight Sentinel			■	
Remote Keyless Entry			■	
Deluxe Rear Compartment				■
Security Cover, Rear Compartment				■
Automatic Leveling Suspension				■
Custom Interior Package (includes Luggage-Area Convenience Net, Front Courtesy Lamps, LH Covered Visor Mirror and Custom Door Trim Panels)			■	■
Electronically Tuned AM/FM Stereo with Seek-Scan, Digital Clock, with Automatic Tone Control, Compact Disc Player, TheftLock and Speed-Compensated Volume (includes Premium Front and Rear Coaxial Speakers)			■	

■ — Included in Special-Value Packages.

Standards & Options

NOTE: Some individually available options listed below may be included in specific Preferred Equipment Groups (see chart above). Some restrictions may apply. Please see your salesperson for details.

EXTERIOR	Sedan	Wagon
Dual sport mirrors (left-hand remote)	S	S
Luggage rack	-	S
Pin striping (not available on Wagon with woodgrain exterior trim)	O	O
Simulated woodgrain exterior trim	-	O
Two-way tailgate with rear wiper/washer	-	S

INTERIOR	Sedan	Wagon
Air conditioning (with CFC-free refrigerant)	S	S
Carpeted front and rear floor mats	S	S
Carpeted load floor and tailgate	-	S
Delayed illuminated entry system	S	S
Instrument panel warning lights: low-fuel, low-oil, low-washer-fluid levels	S	S
Intermittent wiper system	S	S
PASS-Key II theft-deterrent system	S	S
Power door-lock system	S	S
Rear-window wiper/washer	-	S
Scotchgard [®] Fabric Protector (on cloth seats, door trim, floor carpeting and floor mats)	S	S
Seats: Custom Cloth upholstery, with 55/45 reclining split front seat and front/rear center armrests	S	S ^o
Seats: Leather seating surfaces with 55/45 reclining split front seat and front/rear center armrests	O	-
Tilt-Wheel [†] Adjustable Steering Column	S	S

^o Front center armrest in Wagon only. Third-seat trim is vinyl.

DELCO ELECTRONICS SOUND SYSTEMS

NOTE: All sound systems include an electronically tuned AM/FM stereo with seek-scan, digital clock and front/rear coaxial speakers.

Stereo: AM/FM w/Automatic Tone Control, cassette tape player, TheftLock and Speed-Compensated Volume	S	S
Stereo: AM/FM w/Automatic Tone Control, compact disc player, TheftLock and Speed-Compensated Volume	O	O

POWER TEAMS/CHASSIS

4300 V8 with Sequential Fuel Injection	S	-
5.7 Liter LT1 V8 with Sequential Fuel Injection	O ^o	S
4-speed automatic transmission: electronically controlled w/overdrive	S	S
Brakes: Power front disc/rear drum with ABS	S	S
Power steering	S	S
Suspension: Sport (requires 5.7 Liter V8 and P235/70R-15 tires)	S	-
Suspension: Trailering Package (requires other options; see your dealer for details)	O ^o	O

^o Included in Sport Suspension Package.

WHEELS/TIRES

Wheel covers: 15" x 7" Deluxe	S	-
Wheels: 15" x 7" cast-aluminum w/locks	O	-
Wheel covers: 15" x 7" wire wheels w/locks	O	S
Tires: P215/75R-15 all-season steel-belted radial white-stripe	S	-
Tires: P225/75R-15 all-season steel-belted radial white-stripe	-	S
Tires: P235/70R-15 Touring (included w/Sport Suspension)	O [†]	-
Tires: P235/70R-15 Touring white-stripe	O [†]	-

S — Standard. O — Optional. P — Preferred Equipment Group.

^o Requires Sport Suspension and P235/70R-15 tires. [†] Requires 5.7 Liter engine.

Caprice Classic Colors And Trim



Black ■ ■ ■



Medium Adriatic Blue Metallic ■ ■ ■



Dark Cherry Metallic ■ ■ ■



Granite Metallic ■ ■ ■



Dark Green-Gray Metallic ■ ■ ■



Medium Garnet Red Metallic ■ ■ ■



Bright White ■ ■ ■



Light Driftwood Metallic ■ ■ ■

INTERIOR COLORS

EXTERIOR COLORS	Medium Beige	Medium Blue	Gray	Ruby Red
-----------------	--------------	-------------	------	----------

CAPRICE CLASSIC FABRICS

Medium Beige

Medium Blue

Gray

Ruby Red

CAPRICE CLASSIC OPTIONAL LEATHER SEATING SURFACES

Medium Beige

Medium Blue

Gray

Ruby Red

Data

EXTERIOR DIMENSIONS (in.)	Sedan	Wagon
Wheelbase	115.9	115.9
Length (overall)	214.1	217.3
Width (overall)	77.5	79.6
Height (overall)	55.7	60.9
Track width — front	61.8	62.1
Track width — rear	62.3	64.1

INTERIOR DIMENSIONS (in.)

Head room — front	39.2	39.6
Head room — rear	37.9	39.4
Leg room — front	42.2	42.2
Leg room — rear	39.5	38.0
Shoulder room — front	63.4	63.4
Shoulder room — rear	63.4	63.5
Hip room — front	57.0	56.9
Hip room — rear	56.9	57.1

CAPACITIES

Passenger capacity	6	8
Luggage capacity (cu. ft.)	20.4	-
Cargo capacity — w/rear seat up (cu. ft.)	-	54.7
Cargo capacity — w/rear seat down (cu. ft.)	-	92.7
Fuel tank capacity (gal.)	23.0	21.0

TRAILERING

Trailer classification	Heavy	Heavy
Gross trailer weight (lbs., up to)	5000*	5000*
Maximum tongue load (lbs.)	600*	600*

*When properly equipped with available options; tows up to 2000 lbs. without trailering options.

TURN PLASTIC INTO STEEL WITH THE GM CARD®.

The GM MasterCard®, with no annual fee, is the revolutionary financial vehicle specifically designed to help put you behind the wheel. Every time you use it, GM will credit 5% of your purchase toward buying or leasing the GM car or truck of your dreams. It could mean saving hundreds, even thousands of dollars over and above any other discounts or rebates. Call 1-800-8GM-CARD for more information, including annual limits and restrictions.



SMARTLEASE BY GMAC makes it easy to enjoy the luxury and comfort of Caprice Classic. With

SMARTLEASE, qualified customers can be approved in about one hour, and you enjoy low SMARTLEASE monthly payments. Plus, SMARTLEASE

offers you choices at the end of your lease. You can either buy your Caprice Classic at a price guaranteed up front, or return your vehicle with no other obligations — assuming the terms of the lease have been met. For more information about SMARTLEASE, or any of the other quality GMAC financing options, see your Chevrolet dealer or call 1-800-32-SMART.

Caprice Classic Safety Features

OCCUPANT PROTECTION

- Supplemental Inflatable Restraint: manual lap/shoulder safety belts and air bags, driver/right-front passenger
- Manual lap/shoulder safety belts, outboard rear-seat positions
- Manual lap safety belts, center-seat positions
- Energy-absorbing steering column
- Energy-absorbing instrument panel
- Interlocking door latches
- Safety armrests
- Breakaway inside rearview mirror
- Security door locks and door-retention components
- Laminated windshield glass, urethane-bonded
- Head restraints, front, adjustable
- Side-door beams
- Passenger-guard inside door-lock handles
- Safety belt use reminder system
- Front and rear crush zones
- Tempered safety glass, side and rear windows
- Dual sun visors
- Pressure-lock radiator cap
- Child security rear-door locks
- Power window lockout switch.

CRASH AVOIDANCE

- Side-marker lamps and reflectors
- Parking lamps
- Four-way hazard-warning flashers
- Backup lamps
- Directional signal control
- Windshield defrosters, washers and multi-speed wipers
- Inside day/night rearview mirror
- Outside rearview mirrors
- Brake system with dual master cylinder plus warning light
- Center high-mounted stop lamp
- Starter safety switch
- Dual-action hood latch
- Low-glare finish (inside windshield moldings, wiper arms and blades, metallic steering wheel surfaces)
- Illuminated heater and defroster controls
- Tires with built-in tread-wear indicators
- Audible disc brake lining-wear indicators
- Four-wheel anti-lock brake system (ABS)
- Brake/transmission shift interlock.

THEFT DETERRENCE

- Visible vehicle identification number
- Laser-etched VIN plate
- Theft-deterrent steering column lock
- PASS-Key II personal security system
- Remote inside hood release
- Theft-deterrent key-locking system.



A note about air bags:
Always wear safety belts, even with air bags.

A Word About ...

CUSTOMER ASSISTANCE

The Chevrolet Customer Assistance Center (CAC) has a special toll-free number (1-800-222-1020). It puts you in contact with Chevrolet experts who can handle any product/service question or problem you may have.

GM PROTECTION PLAN

The available GM Protection Plan offers service protection in addition to that provided by GM's new-vehicle limited warranty. Ask your dealer about it. Coverage available only in the U.S. and Canada.

ENGINES

Chevrolets are equipped with engines produced by different operating units of GM, its subsidiaries or suppliers to GM worldwide.

CORROSION PROTECTION

Chevrolets are designed and built to resist corrosion. All body sheet-metal components are warranted against rust-through corrosion for 6 years or 100,000 miles, whichever comes first. Application of additional rust-inhibiting materials is not required under the corrosion coverage and none is recommended.

ASSEMBLY

Chevrolets are assembled by different operating units of General Motors, its subsidiaries or suppliers to GM worldwide. Chevrolets incorporate thousands of components produced by different operating units of GM, its subsidiaries or suppliers to GM worldwide. We sometimes find it necessary to produce Chevrolets with different or differently sourced components than originally scheduled. All such components have been approved for use in Chevrolets and will provide the quality performance associated with the Chevrolet name. Since some options may be unavailable when your vehicle is assembled, we suggest that you verify that your vehicle includes the equipment you ordered or, if there are changes, that they are acceptable to you.

UPDATED SERVICE INFORMATION

Chevrolet regularly sends its dealers useful service bulletins about Chevrolet products. Chevrolet monitors product performance in the field. We then prepare bulletins for servicing our products better. Now you can get these bulletins, too. Ask your dealer. To get ordering information, call toll free 1-800-551-4123.

IMPORTANT: A WORD ABOUT THIS CATALOG

We have tried to make this catalog as comprehensive and factual as possible. We reserve the right, however, to make changes at any time, without notice, in prices, colors, materials, equipment, specifications, models and availability. Since some information may have been updated since the time of printing, please check with your Chevrolet dealer for complete details.

General Motors, GM, the GM Emblem, Caprice, Chevrolet and the Chevrolet Emblem are registered trademarks and Chevy is a trademark of the General Motors Corporation. TheftLock is a trademark of the Delco Electronics Corporation. Scotchgard is a trademark of the 3M Corp. GMAC and SMARTLEASE are registered trademarks of the General Motors Acceptance Corporation. ©1995 General Motors Corporation. All rights reserved.



GENUINE CHEVROLET®
Proud Sponsor of the 1996 U.S. Olympic Team

