

GMC SUBURBAN



GMC... A TRUCK YOU CAN LIVE WITH

GMC SUBURBAN

GMC Suburban Is A Big-Job Specialist!

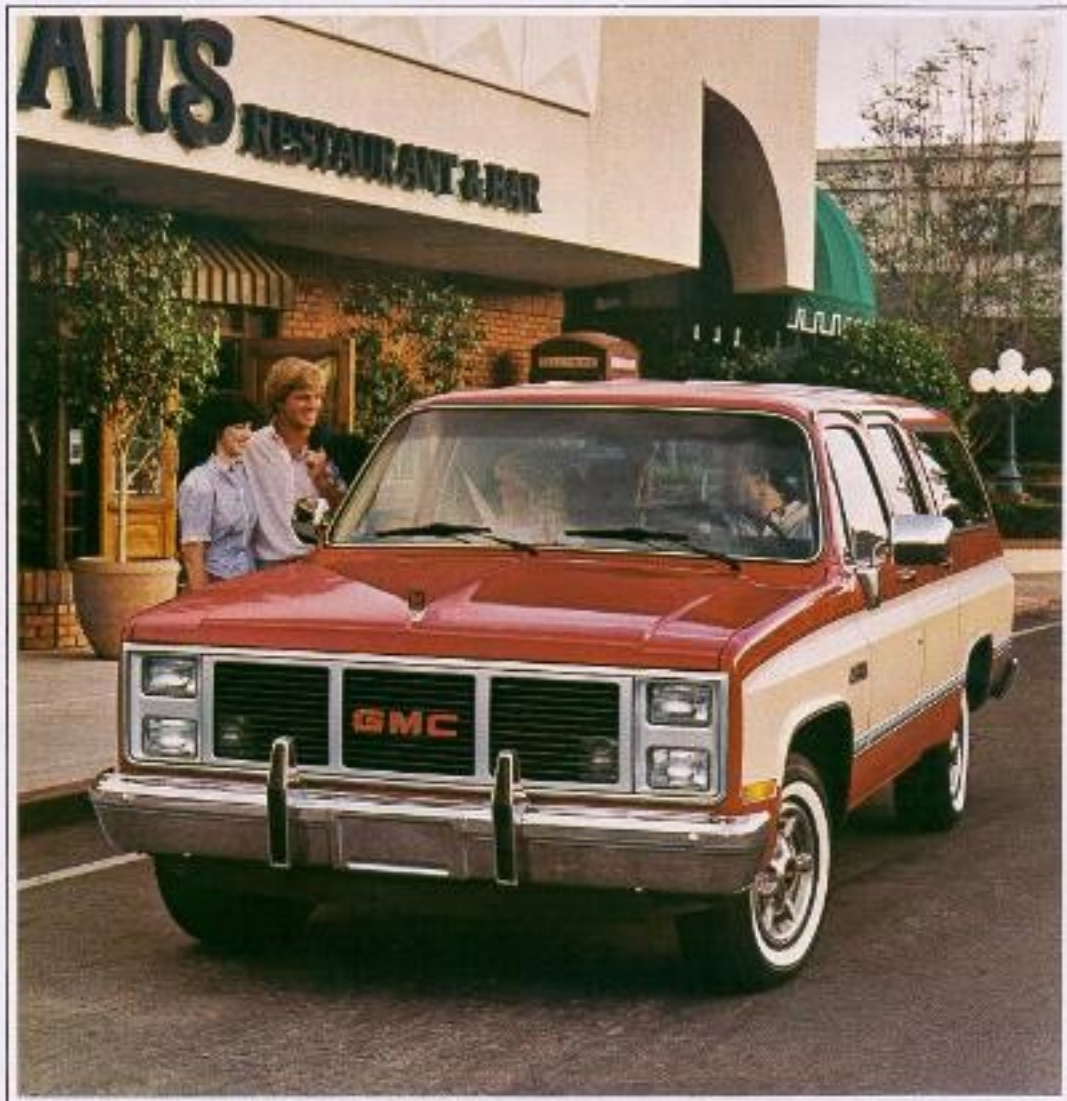
Enjoy the space and comfort you desire in the vehicle that has it all! GMC Suburban offers big V8 gasoline or diesel engines in 2-WD and 4-WD half-ton or three-quarter-ton van-type wagons. Suburban can carry up to 9 people with available seating or carry a payload up to 3903 lbs. or, when properly equipped, tow a trailer with a gross weight up to 9500 lbs. (C-2500 gasoline engine models). GMC Suburban can do more than any ordinary station wagon.

Room and Versatility to Spare...Suburban's interior roominess starts with a standard 3-passenger bench seat and 144 cubic feet of rear load space. Two available 3-passenger rear seats increase seating capacity to nine persons, with a 35-cu-ft space in back for their luggage. Without the third seat, the right 1/3 of the center split bench seat can be folded flat to provide space for a total of five passengers plus such long cargo as skis, fishing poles, surfboards, lumber, or what-have-you. Or, fold the entire seat for larger cargo loads.

New Appearance and Convenience for '85!...All models sport a new front-end appearance with newly styled grilles and headlamp bezels. Front bench seat cushion contour and backrest angle are revised for greater comfort, and available custom pigskin-grained vinyl and custom textured velour cloth fabrics are new. New wet-arm-type wiper/washer system provides impressive windshield cleaning and wipers operate more quietly than the former system.



Sierra Classic 2-WD Suburban with trailer



Sierra Classic 2-WD Suburban

TOUGH MUSCLE...LUXURY CAR COMFORT



Sierra Classic interior with available seating for nine passengers. Split bench center seat folds flat for easy entry to rear seat.



Standard Sierra interior shown comes in Blue or Saddle Tan.



Reclining bucket seats are available for Sierra Classic models in your choice of velour cloth or vinyl trim.



Panel-type rear doors have fixed tinted glass, opening is 37" high by 59.6" wide. New rear door power locks now included in available power door lock system.



Wagon-type tailgate offers available power drop glass, with or without electric defogger.

THREE BEAUTIFUL WAYS TO GO

Sierra Classic. Our available top-level trim permits you to create an exceptionally beautiful interior environment. Everything included in, or available with, Sierra Classic is styled for beauty and crafted for comfort and convenience. Bench seat is standard, or you may select front reclining high-back bucket seats with folding inboard armrests lavishly upholstered in new textured custom velour cloth in Blue, Saddle, or Slate Gray; or new pigskin-grained custom vinyl in Blue or Saddle. Trim includes a deluxe instrument panel with needle-gage instruments; insulated floor carpeting; custom steering wheel and visor mirror.

High Sierra. When you select this available mid-level trim, the standard front bench seat (and available rear seats) can be upholstered in standard grained vinyl or available new pigskin-grained custom vinyl or new textured custom velour cloth in a choice of Blue or Saddle. Trim includes a full-length insulated headliner, front and rear dome lamps with door- or tailgate-operated switches, and color-keyed rubber floor mats.

Sierra (Standard). Suburban's standard trim presents a very attractive exterior and a comfortable interior. A foam-cushioned front bench seat is upholstered in a rich-looking, grained vinyl in a choice of Blue or Saddle Tan, available rear bench seating is covered to match, included in Sierra are: color-keyed sunshades; door trim panels with integral armrests; cockpit-type instrument cluster; full-length black rubber floor covering; and tinted window glass all around. (Details of all trim levels on pages 6 and 7.)



Sierra Classic gage-type instrument cluster

GMC 4-WD

GASOLINE OR DIESEL



Sierra Classic 4-WD Suburban

Tough Hauler For Rough Country. Ground-gripping 4-WD GMC Suburbans are built truck-tough so they can travel to off-road worksites or fairsites with impressive loads of passengers and cargo (up to 3618 lbs including passengers, cargo, and equipment). Suburbans are noted for their trailering ability and 4-WD models are no exception (see page 7 for details).

Manual Hublocks Standard For '85. We believe you'll appreciate the dependability afforded with our standard manual hublocks, especially when you want to equip your 4-WD Suburban for heavy-duty applications such as snowplowing. And, in such cases, we also recommend equipping your vehicle with our available heavy-duty front spring package that also includes heavy-duty front and rear shock absorbers on K-1500 models (stan-

dard on K-2500 models). If your type of operation is less strenuous, you may want to specify available automatic hublocks which permit no-stop shifting into 4-WD at speeds up to 25 MPH. Before ordering, we suggest you check your GMC Dealer about '85 hublock availability.

Rugged 4-WD Chassis. Chosen from gasoline or diesel models in half-ton or three-quarter-ton versions. All 4-WD Suburbans are built on a truck-tough foundation, including carbon-steel frame, leaf spring suspension, and high-capacity front and rear axles. You may add available heavy-duty front quad shock absorbers, locking differential rear axle, and stone shields for the fuel tank and transfer case. Power brakes, power steering, and front stabilizer bar are standard equipment for ease of handling wherever you travel.

6.2L V8 DIESEL ENGINE

The standard engine for Suburban diesel models offers impressive proven performance. High torque output makes the 6.2L a good choice for heavy-duty hauling and towing.

Included with the 6.2L diesel are an engine block heater and fuel heater to help cold-weather starting and a fuel filtration system that helps provide protection from water and dirt in the fuel. Standard features exclusive with diesel models include twin heavy-duty Delco Freedom II batteries, 66-amp Delcotron generator, sound insulation package, and special instrumentation. Ask your GMC Dealer for the full list of diesel-model standard equipment.

GASOLINE ENGINES

5.0 Liter 4-8b1 V8 With Electronic Spark Control (ESC). A high-compression (9.2 to 1) ratio engine that offers impressive horsepower and torque for C-1500 Suburbans. ESC system helps control spark "knock." The 5.0 with ESC is not available in California.

5.7 Liter 4-8b1 V8. A 350-cu-in displacement engine that provides the added horsepower and torque recommended for towing medium and heavy trailers. Features a staged, 4-barrel carburetor.

7.4 Liter 4-8b1 V8. The largest displacement engine available for C-2500 Suburbans. Recommended when the vehicle's maximum trailer-



towing capability is desired. When air conditioning is ordered with this engine, a new electric auxiliary booster fan is included to help provide additional engine cooling.

A WORD ABOUT ENGINES

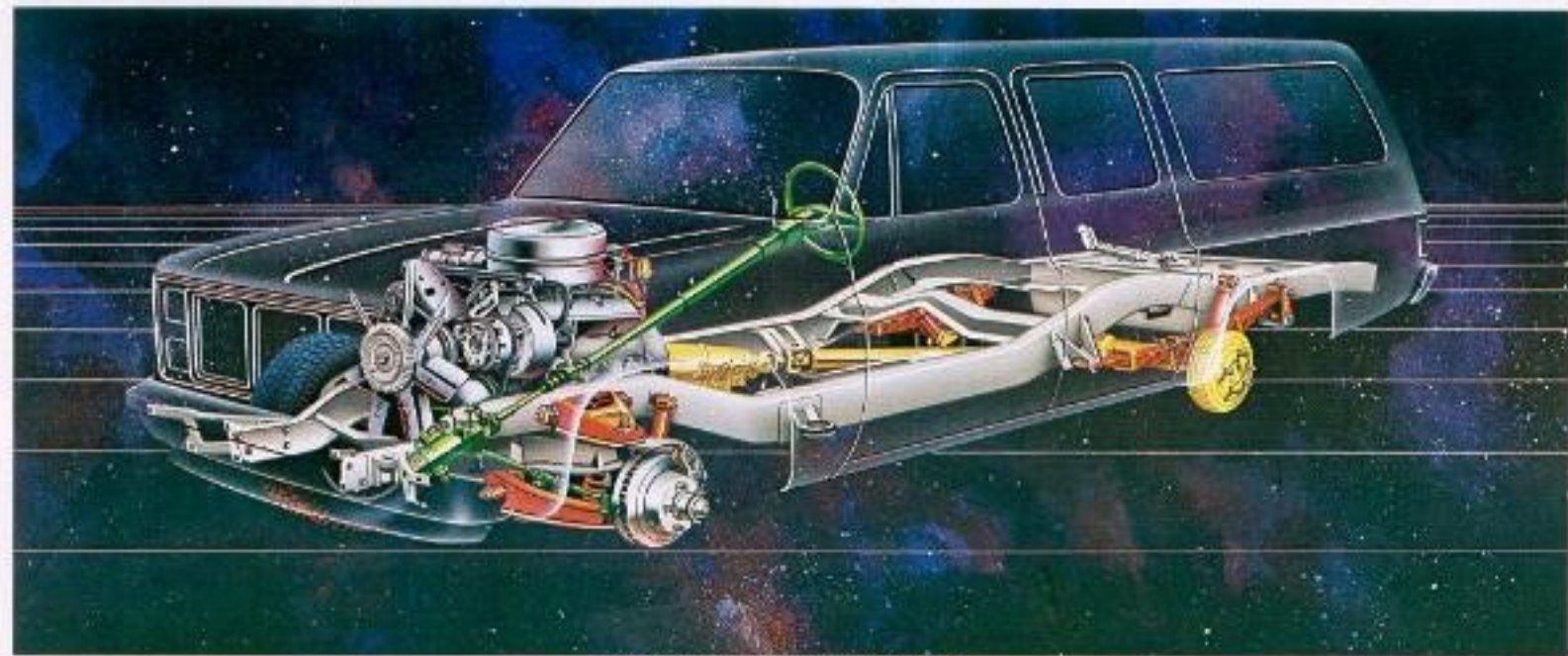
GMC Trucks are equipped with engines produced at facilities operated by GM car and truck groups, subsidiaries or affiliated companies worldwide.

ENGINE TECHNICAL DATA

ENGINE CLASS	LIGHT-DUTY KWAT'S UNDER 3000 LBS.			HEAVY-DUTY KWAT'S OVER 3000 LBS. AND OVER		
	5.0 LBS V8 (ESC)	6.2 LBS V8	6.7 LBS V8 Turbo	5.7 LBS V8	7.4 LBS V8	6.2 LBS Diesel
MAXIMUM HORSEPOWER	129*	159	140	175	148	115
MAXIMUM TORQUE (LBS-FT)	274 @ 2400	437 @ 2400	319 @ 2300	415 @ 2400	425 @ 432	336 @ 2000
COMPRESSION RATIO	9.2:1	9.2:1	21.3:1	9.5:1	18:1	17:1
MAX. OIL CONSUMPTION (PT/HR)	160 @ 1800	190 @ 2000	350 @ 2000	100 @ 2000	200 @ 2000	148 @ 2000
EST. OIL CONSUMPTION (PT/1000)	20 @ 2000	27 @ 2000	240 @ 2000	70 @ 2000	200 @ 2000	27 @ 2000

ESC = Electronic Spark Control
*Some not available in California
†Net HP 155 @ 4000, net torque 247 @ 2800 in California

QUALITY TRUCKS



Cutaway of Sierra Classic 2 WD Suburban

New Value Features. Engineers and designers constantly explore new technologies that can be incorporated into GMC trucks to enhance their value. Here are some new features for 1985 GMC Suburbans: **New Wet-Arm Windshield Wiper/Washer System.** Features washer nozzles mounted on wiper arms for more efficient windshield cleaning. **New Dome Light Switches** for rear side doors and rear panel doors or tailgate to supplement front side door switches on models with interior headliner. **New Hydraulic Clutch System** for models with manual transmissions is self-adjusting, smoother operating. **New Available Aluminum Wheels.** For a sporty look and lighter weight you may opt for cast aluminum wheels on CK-1500 Suburbans. **New All Seasons Radial Tires.** Standard and all optional highway-type tires for CK-1500 Suburbans feature a new All Seasons tread for improved traction in mud and snow.

VALUE-PROVEN STANDARD FEATURES:

- Flow-through power ventilation circulates air through the interior when the heater fan is on, forcing stale air out through door vents when

- windows are closed • Double-wall construction of hood, front fenders, side doors, rear doors, or tailgate • Girder-beam front suspension on 2-WD models permits front wheels to take bumps independently • Two-stage multileaf rear springs provide a soft ride under light load and firmer support as load increases • Salisbury-type rear axle features a large ring gear, roller bearings, and a wide range of ratios—locking differential is available with certain ratios • Steel-belted, radial-ply tires for good performance • Power brakes with audible front disc pad wear sensors • Delco Freedom II battery never needs water — just routine checking of built-in charge indicator • Handy multifunction switch on steering column provides fingertip control of direction signals, windshield wiper, headlamp hi-beam, and optional electronic speed control • Ignition switch buzzer warns if key is left in switch.

EXTENSIVE ANTI-CORROSION MEASURES:

Traditional GMC anti-corrosion treatments include the use of corrosion-resistant steels for many parts of the body and sheet metal. In

addition, special Elpo-Dip priming coats the entire body.

Aluminum wax preservative and special sealers are used in critical areas to ward off contaminants. Lustrous, baked-on acrylic enamel is used for the finish coat, preceded by a special anti-chip coating sprayed on lower fender and body surfaces. Ask your GMC Dealer for full details of anti-corrosion measures.

GMC COMMITMENT PLUS:

To show our appreciation should you decide to purchase an eligible 1985 GMC Light-Duty Truck, your dealer will fill your factory-installed fuel tank at time of delivery, and you will receive a Personalized Identification Card to include with your Owner Package. Applies to retail sales only.

GMC AVAILABLE ACCESSORIES

The time you spend in your new Suburban can be even more enjoyable with the addition of available convenience items, dress-up options, or audio equipment. New available equipment for 1985 includes: color-keyed rubber floor covering for center rear seat area; lock for panel rear doors added to power door lock package (rear door power lock also available separately); front tow hooks for 2-ND models; and cast-aluminum wheels for CK-1500 models.

Look over the items pictured at the right and listed in the chart below to enhance the value of your Suburban.

NOTE: Some items are restricted to, or are standard on, certain models. Check with your GMC Dealer for details.

GM Protection Plan:

An option that offers service protection beyond that provided by GM's new vehicle limited warranty. Available only in the USA and Canada during the 1985 model year. See your dealer for details.



Comfortilt steering wheel



Electronic-type automatic speed control

Quartz electric clock



Front air conditioning



Delco radios: AM, AM/FM, AM/FM stereo, AM/FM stereo with cassette tape player



Full wheel covers



Power door locks and/or power windows



Rear air conditioning (requires front air conditioning)

STANDARD AND AVAILABLE EQUIPMENT

TRIM LEVEL		SIERRA (ST5)	HIGH SIERRA (ST8)	SIERRA CLASSIC (Y55)
EXTERIOR APPEARANCE				
GRILLE/HEADLAMP REZELS	Light/Dark Argent Painted Metal/Plastic, Bumper for Single Parking Air Heaters (up)	S	S	—
	Light/Dark Argent Painted Metal/Plastic, Bumper for Dual Heaters (up)	A(1)	A(1)	S
IDENTIFICATION				
Front Bumper	Quartz Monopole with Series Designation	S	S	S
	"1/2 Line Diesel" Nameplate (S)	S	S	S
GRG	Integral GRG Letters	S	—	—
	Bright Applied GRG Letters	A(1)	S	S
Wood	Bright Discreet with "1/2 Line Diesel" Lettering (S)	S	S	S
	Bright Discreet with GRG Lettering (1)	A(2)	A(2)	A(2)
Rear Doors/Bulge	Bright "Suburban" Nameplate with GRG Letters	S	S	S
	"Steel 1/2" Nameplate (S)	S	S	S
ORNAMENTATION				
Body Side/Rear Molding	Black Plastic with Bright Trim	A	S	—
	Bright Plastic with Black Trim	A(1)	A(1)	—
	Custom Black Plastic with Bright Trim	A(1)(4)	A(2)(4)	—
	Delco Bright Plastic with Black Trim	A(1)(4)	A(2)(4)	S(1)(4)
	Bright Grip Molding Over Side Doors, Rear Doors or Bulge	S	S	S
	Bright Grille and Headlamp Bezel Outline Molding	S	S	S
	Bright Front Side Marker and Turn Lamps	—	S	S
	Black Windshield and Side Rear Quarter Window Trim	—	S	S
	Bright Metal Hubcaps	S	S	S
WHEELS/WHEEL TRIM				
	Bright Metal Wheel Covers (CK-1500 only)	A	A	A
	Cast Aluminum Wheels (CK-1500 only)	A	A	A
	Silver Painted Rims (CK-1500 only)	A	A	A
	Special Bright Metal Wheel Covers (CK-1500 only)	A	A	A
	White Painted Conquest Wheels (includes spare on CK-1500)	S	S	S
	White Painted Styled Wheels (CK-1500 only)	A	A	A

TRIM LEVEL		SIERRA (ST5)	HIGH SIERRA (ST8)	SIERRA CLASSIC (Y55)
INTERIOR APPEARANCE				
FLOOR COVERING				
	Color-Keyed Carpeting, Full Length Including Rear Wheel Well Linings	—	—	S
	Color-Keyed Rubber Mat on Front Seat Area, Embossed Black Rubber for Center and Rear Seat Area (Color-Keyed Rubber Substituted with Optional Center Seat)	—	S	—
	Embossed Black Rubber Mats (if not up)	S	—	—
CARPET/SEAT/DOOR TRIM PANELS				
Door Sides	Full Color-Keyed Plastic (1)	—	—	S
	Partial Color-Keyed Plastic (2)	S	S	—
Plastic	Color-Keyed Plastic on Windshield and Center Door Pillars	—	S	S
	Color-Keyed Plastic on Rear Lock Pillars	—	—	S
Rear Doors	Color-Keyed Vinyl-Covered Hardboard Trim Panels with Carpet Trim on Lower Doors, Color-Keyed Plastic Gasket Molding	—	—	S

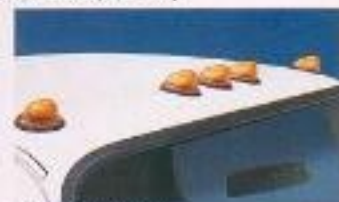
TRIM LEVEL		SIERRA (ST5)	HIGH SIERRA (ST8)	SIERRA CLASSIC (Y55)
INTERIOR APPEARANCE				
INTERIOR APPEARANCE (cont'd)				
CAVITY MOLDINGS/TRIM PANELS (cont'd)				
Rear Quarter Area	Body Color Painted Steel Lower Panels	S	S	—
	Color-Keyed Vinyl-Covered Plastic Trim Panels with Carpet Trim on Lower Doors, Color-Keyed Plastic Gasket Molding in Upper Areas	—	—	S
Side Doors	Color-Keyed Embossed Plastic Trim Panels with Integral Armrests Plus Embossed Rear Doors	S	S	—
	Color-Keyed Embossed Plastic Trim Panels with Integral Armrests, Upper Insert with Plastic Base, Beaded Metal Finish, Cloth-Inset on Armrest Area, Lower Carpeted Area with Bright Trim, Front Door Closing Assist Strap and Map Pockets, and Armrests in Rear Doors	—	—	S
100 Mile	Color-Keyed Plastic Trim Panel with Carpet Trim	—	—	S
HEADLAMP MOLDINGS				
	Full Length Color-Keyed Perforated Custom Metal Flangeless with Matching Plastic Bezel Molding (S)	—	—	S
	Full Length Color-Keyed Perforated Metal Plastic with Fiberglass Bezel and Matching Bezel Molding (1)	A	S	—
INSTRUMENT PANEL/FRM				
Instrument Cluster Bezel	Black Gracile Finish and Bright Trim	S	—	—
	Plastic Bezel Finished Metal Finish and Bright Trim	—	S	—
Instrument Panel Application	Black Gracile Finish with Specific Composite	S	S	—
	Plastic Bezel Finished Metal Finish with Specific Nameplate	—	—	S
STEERING WHEEL TRIM				
	Black Trim Button with Red GRG Lettering	S	S	—
	Black Trim Button with Red GRG Lettering and Bright Trim	—	—	S
COMFORT/CONVENIENCE PROTECTION				
FURROWS				
	Chromed Front and Rear	S	S	S
	Delco Chromed Front and Rear (includes black rubber tub rings)	A	A	A
	Color-Keyed Rubber Front and Front and Center Rear	—	—	A
FLOOR MATS (CLASS)				
	Deep-Tread Glass for Side Rear Doors and Side Rear Quarter Windows	A	A	A
	Temp-Tread Glass for Side Rear Doors, Side Rear Quarter Windows, and Rear Doors/Bulge	A	A	A
	Flexible Tripart Window for ESS models	A	A	A
WARRANTS				
	Painted Glass As-Needed	S	S	S
	Bright Door Edge	A	A	A
	Chromed Front Bumper (not available with Delco Front Bumper)	A	A	A
HEATING/COOLING/DEFROSTING				
	Air Conditioning, Front and Rear	A	A	A
	Defrost Control Package (1)	A	A	A
	Flexible Rear Window (Suburban Y55 models)	A	A	A
	Flow-Through Power Ventilation	S	S	S
	Heater/Defroster Power-Trip Switch for Rear (1)	A	A	A



Platform trailer hitch (requires Trailing Special Equipment)



Trailing with Suburban



Road marker lamps



Rally wheels



Aluminum Wheel

TRAILERING WITH GMC SUBURBAN

Suburbans are noted for their ability to pull trailers. A properly equipped C-2500 Suburban can move up to 15,500 lbs Gross Combination Weight — that includes everything going down the road (vehicle, passengers, cargo, and trailer).

GMC offers a Trailing Special package that includes: a 9500-lb-capacity weight-distributing platform hitch with a maximum 1000-lb tongue load; a 7-wire trailer wiring harness; an engine-oil cooler (gasoline models); transmission-oil cooler; power steering where not already standard; heavy-duty front and rear shock absorbers for gasoline-engine C-1500 models; and a heavy-duty 65-amp Delcotron generator for gasoline models — almost all of the equipment you need to properly tow a trailer. Charted below are the various powertrain requirements for the Trailing Special package, as well as the Gross Combination Weight Rating (GCWR) obtained with this equipment.

TRAILERING SELECTOR GUIDE BY GCWR

MODEL SERIES	C-1500 G-1500	C-1500 G-1500	C-2500 G-2500	C-3500 G-3500	C-4500 G-4500	C-6500 G-6500
MAX GVW	13,000	11,500	13,000	11,500	14,000	11,000
MAX GVWR	5,425	3,750	5,425	3,750	4,950	3,750
ENGINE	5.7L V6 Gasoline	5.7L V6 Gasoline	5.7L V6 Gasoline	5.7L V6 Gasoline	5.7L V6 Gasoline	5.7L V6 Gasoline
TRANSMISSION	Automatic	Automatic	Automatic	Automatic	Automatic	Automatic

GCWR is based on weight of vehicle, trailer, cargo and passengers. Refer to the 1998 GMC Trailing Guide for further details. GVW and GVWR are limited by load capacity. Always use proper tie-down technique.

TRUCK LEVEL		SUBURAN (STD)	HIGH CUTTER (OPT)	SEVERE CUTTER (REQ)
COMFORT/CONVENIENCE/PROTECTION (cont'd)				
HEADLAMP COUPLER DISCONNECT (REQ)	None	A	A	A
HOORN	Single Electric (Low-Voltage) Auxiliary Electric (High-Voltage)	S	S	S
INSTRUMENT CLUSTER	Step-Type Quartz-Type Electric Clock (optional quartz-type clock)	A	A	S
INSTRUMENT PANEL	Warning Light Type Control To Our Assist	S	S	—
	Coaxial Light with Auxiliary Illumination Color-Keyed Energy-Absorbing Pad Right-Hand Storage Compartment with Latch	A	S	S
INTERIOR LAMPS	Domed Front and Rear Door or Tailgate Operated Switches (R) Map (under instrument panel at center)	A/S	S	S
MIRRORS	Dual Chromed Exterior, Conventional Type Dual Parastat Stainless Steel Exterior Mirror System Type Dual Stainless Steel Exterior Mirror Type Interior Rear View, Prismatic Type Interior Right Head View	A	S	S
POWER DOOR LOCKS/ WINDOWS	Available Separately or Together in Operating Convenience Package	A	A	A
RADIO/AUTOMATIC	AM, AM/FM, AM/FM Stereo, and AM/FM Stereo with Cassette Type Wheeler Antenna (also used with optional radio)	A	A	A
SEATBELT BELTS	Full-Team 3-Pointing Front Bench with Dashboard Retractable Lap/Shoulder Belts and Manual Center Lap Belt Full-Team 3-Pointing Folding Center Bench Divided into Two Sections with Cylindrical Retractable Lap Belts and Manual Center Lap Belt (includes car seat tether on rear base of seat bases) Full-Team 3-Pointing Quik-Disc-Inject Retractable Rear Bench with Armrests and Three Manual Lap Belts (also for optional in-vehicle) Full-Team Driver and Passenger Occupant with Retractable Side Belts and Inertial Folding Armrests (includes manual retractable lap/shoulder belts)	S	S	S
SEATING WEIGHT/ COLUMNS	Rack Energy-Absorbing Column with Anti-Roll Latching Two-Speed Soft Back Plastic Wheel, Conventional Type Two-Speed Soft Back Plastic Wheel, Conventional Type	S	S	S
SUBSTRATE	Color-Keyed Painted LHS	S	S	S
WIPER/WASHERS	Electric, Two-Speed Wipers, Wet Arm Type Wipers Electric, Two-Speed Wipers with Intermittent Wipe Feature, Wet Arm Type Wipers	S	S	S
OTHER EQUIPMENT (See Data Book for details)		A	A	A

IMPORTANT! A WORD ABOUT THIS CATALOG: We have tried to make this catalog as comprehensive and factual as possible and we hope you find it helpful. However, since the time of printing, some of the information you'll find here may have been updated. Also, some of the equipment shown or described throughout this catalog is available as factory-installed options, as dealer accessories, and as specialized equipment from various independent suppliers at extra cost. Your dealer has details and, before ordering, you should ask him to bring you up to date. The right is reserved to make changes of any time, without notice, in prices, colors, materials, equipment, specifications, and models. Check with your GMC Dealer for complete information.

A WORD ABOUT ASSEMBLY, COMPONENTS, AND OPTIONAL EQUIPMENT IN THESE GMC PRODUCTS: The GMC trucks described in this catalog are assembled at facilities operated by General Motors or GM of Canada. These vehicles incorporate thousands of different components produced by car and truck groups and various component divisions of GM and by various suppliers to General Motors. From time to time during the manufacturing process, it may be necessary in order to meet public demand for particular vehicles or equipment, or to meet federally mandated emissions, safety, and fuel economy requirements, or for other reasons, to produce GMC products with different components or differently sourced components than initially scheduled. All such components have been approved for use in GMC products and will provide the quality performance associated with the GMC name.

With respect to extra-cost optional equipment, make certain you specify the type of equipment you desire on your vehicle when ordering it from your dealer. Some options may be unavailable when your truck is built. Your dealer receives advice regarding the current availability of options. You may ask the dealer for this information. GM also requests the dealer to advise you if an option you ordered is unavailable. We suggest that you verify that your truck includes the optional equipment you ordered, or if there are changes, that they are acceptable to you.

These vehicles are also available under the Chevrolet nameplate (Series C10, C20, K10, K20 Suburban).

A WORD ABOUT UPDATED SERVICE INFORMATION: GMC Truck & Coach Operation regularly sends its dealers useful service bulletins about GMC Truck products. GMC Truck & Coach Operation monitors product performance in the field. We then prepare bulletins for sending our products better. Now you can get these bulletins, too. Ask your dealer, to get ordering information, call toll-free 1-800-551-4123.

PAINT SCHEMES



Standard Solid Paint Schemes



Available Special Two-Tone



Available Exterior Decal Package

Standard Paint Suburban offers a choice of 10 solid colors. Black or bright body side moldings are available with standard paint scheme.

Available Special Two-Tone for added distinction. Includes two-tone paint and bright-trimmed black lower body side and rear moldings (Sierra models) plus bright wheel opening moldings and bright side marker and taillight trim (Sierra and High Sierra models). Second color is applied below body side and rear moldings.

Available Exterior Decal Package This attractive option includes the moldings and bright trim described above, upper body side and rear decal stripes coordinated to your choice of 23 two-tone paint combinations, and stand-up hood ornament for gas engine models.

EXTERIOR PAINT COLORS



Frost White Silver (M) Midnight Black Light Blue (M) Midnight Blue Colonial Yellow Doekin Tan Desert Sand (M) Indian Bronze (M) Apple Red

For accurate colors, ask your GMC Dealer to show you actual paint color chips and fabric swatches.

GMC TRUCKS
GENERAL MOTORS CORPORATION
TRUCK & BUS GROUP

Let's Get It Together... Buckle Up.

Every new 1985 GMC Light Duty truck delivered by a GMC Truck Dealer in the United States comes with a one-year, \$10,000 seat belt insurance certificate from M/C General Insurance Corporation at no additional charge. \$10,000 will be paid to the estate of any occupant who suffers fatal injuries as a result of an accident involving that vehicle while wearing a GM seat belt. Buckle up every time you drive.



GM

TECHNICAL INFORMATION

MODEL TYPE	DRIVE TYPE	GASOLINE ENGINE				DIESEL ENGINE			
		2 wheel		4 wheel		2 wheel		4 wheel	
STREETS		C-1500	C-2500	K-1500	K-2500	C-1500	C-2500	K-1500	K-2500
GROSS VEHICLE WEIGHT RATING (GV)	Standard Available	6100 (1) 6000	6600 —	6100 (1) 7300	6600 —	7000 —	8000 —	7000 (1) 7300 (2)	6900 —
ENGINE/TRANSMISSION AVAILABILITY									
5.7L V8 4-speed automatic overdrive		44 (3)	—	—	—	—	—	—	—
5.7L V8 4-speed manual		—	65	64 (2)	61	—	—	—	—
5.7L V8 3-speed automatic		—	44 (3)	—	61	—	—	—	—
6.7L V8 4-speed automatic overdrive		available	—	available	—	—	—	—	—
7.4L V8 3-speed automatic		—	available	—	—	—	—	—	—
6.2L V8 3-speed automatic		—	—	—	—	—	32	—	57
6.2L V8 4-speed automatic overdrive		—	—	—	—	30	—	30	—
FRONT SUSPENSION									
		independent, coil springs (2-W), coil-overs axle, leaf springs (4-W)							
Capacity (lb)		3250	3600	3600	3600	3400	3800	3600	3900
Spring capacity (lb/4)	Standard Available	1025 —	1600 —	1650 2250	1650 2250	1700 —	1900 —	1650 2250	1900 2250
Shock absorber diameter (mm)	Standard Available	25 32	32 —	35 32 (5)	32 35	32 —	32 —	35 32 (5)	32 35
Stabilizer bar diameter (in)	Standard Available	— 1.06	1.25 —	— —	1.25 —	1.06 —	1.06 —	1.25 —	1.25 —
REAR SUSPENSION									
		solid-axle axle, leaf springs							
Axle capacity (lb)		4000	5000	4000	5000	4000	6000	4000	5000
Spring capacity (lb/4)		2000	3000	2000	3000	2000	3000	2000	3000
Shock absorber diameter (mm)	Standard Available	25 32	32 —	35 32 (5)	32 35	32 —	32 —	35 32 (5)	32 35
BRAKES									
		hydraulic, front disc/rear drum							
Power booster		vacuum		vacuum		hydraulic		hydraulic	
Parking		CUM to rear wheels							
STEERING									
		manual (power available)		power		power		power	
TIRES (All Sierra-type 21C-1500/2000 models)									
		radio ply							
	Standard	P225 75R15	L2257 65R16DC	P215 75R15	L225 65R16DC	P225 75R16AL	L2257 65R16DC	P225 75R15	L2257 65R16DC
	Available	variable load only (see GMC Dealer)							
FUEL TANK CAPACITY (gal)	Standard Available	25 31.40	25 31.40	25 31.40	25 31.40	27 32.41	27 32.41	27 32.41	27 32.41
BATTERY COA									
GENEROATOR (WPS)									
		400 amp, 516 v-a-h		400 amp, 516 v-a-h		600 amp, 680 v-a-h		600 amp, 680 v-a-h	
		37 amp, 68 watt (3)		37 amp, 68 watt (3)		68 (3)		68 (3)	

COA - Cold Cranking Amps

- Not available with optional second rear seat.
- Requires optional second rear seat.
- Not available in California.
- 21 g/mph max.
- Must load 50 lbs axle available for 20 mph front, 160 mph rear.
- 20 mph front, 160 mph rear.
- 20 mph front, 160 mph rear.
- 20 mph front, 160 mph rear.