

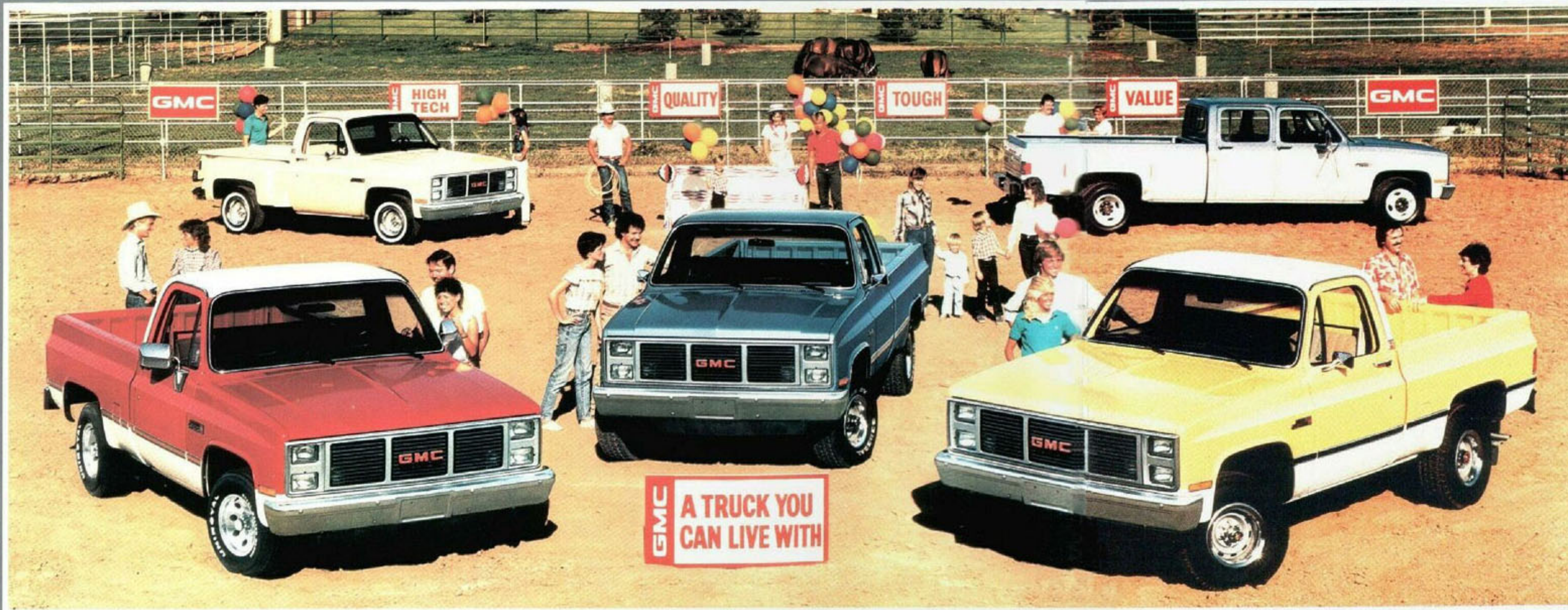
# GMC PICKUPS

FULL-SIZE MODELS



***GMC... A TRUCK YOU CAN LIVE WITH***

# GMC PICKUPS . . . Tough Quality Trucks With Value



## NEED A BIG TOUGH PICKUP? — MAKE IT A QUALITY GMC!

For an all-around hardworking, hard-playing truck a GMC full-size Pickup has a lot to offer. For instance, properly equipped Wideside and Fenderside conventional cab models can carry big payloads up to 5234 lbs (includes passengers, cargo, and equipment) or, with a kingpin-type fifth wheel hitch, can tow a trailer weighing up to 12,500 lbs (includes weight of trailer, equipment, and cargo). (For facts about commercial or RV trailering, ask for a GMC Trailering Guide.) Four generations of truckers have liked, purchased, and used GMC trucks, and for 1985 there's even more to like.

## NEW LOOK, NEW CONVENIENCE

'85 GMC Pickups are distinguished by a fresh, new front-end treatment, and single-rear-wheel conventional cab Widesides sport a new available custom two-tone scheme. New wet-arm-type windshield washers provide efficient windshield cleaning. And front tow hooks now are available for 2-WD as well as 4-WD models.

## NEW INNER COMFORT

Spend all day touring or working and you'll appreciate the quiet cab and the comfort of the new seat cushion contour and new seat-back angle of the standard bench seat. When uplevel trim is ordered, both custom vinyl and custom cloth fabrics are new for '85.

## NEW 4.3 LITER VORTEC V6 ENGINE

For '85 a new 4.3 Liter V6 is the standard gasoline engine in Pickups under 8500 lbs GVWR (see page 13). The Vortec V6 engine features a high 9.3 to 1 compression ratio and ESC (Electronic Spark Control) for impressive acceleration and performance.

## NEW ALL SEASONS RADIAL TIRES

Steel-belted radial tires with high-traction All Seasons tread are standard on C/K-1500 Series Pickups. The All Seasons tread also is used on available 15" highway type tires for these models.

## NEW ALUMINUM WHEELS

Lightweight cast aluminum road wheels now are available for C/K-1500 Pickups (see page 16).

## OTHER CHANGES

Improvements have been made to manual transmission clutch controls, the electrical fuse block, the 6.2 Liter V8 diesel engine, and available camper mirrors. And, as always, we pay careful attention to small details so we can offer '85 Pickups with the quality you've come to expect from GMC.

## GMC COMMITMENT PLUS

To show our appreciation should you decide to purchase an eligible 1985 GMC Light-Duty Truck, your dealer will fill your factory-installed fuel tank at time of delivery, and you will receive a Personalized Identification Card to include with your Owner Package. Applies to retail sales only, but not to Cab & Chassis models nor any Series 3500 Pickup model described in this catalog.

2-WD Series C-1500 Sierra Classic Fenderside Pickup

2-WD Series C-1500 Sierra Classic Wideside Pickup

4-WD Series K-1500 Sierra Classic Wideside Pickup

2-WD Series C-3500 Sierra Classic Wideside Pickup with dual rear wheels

4-WD Series K-1500 Sierra Classic Wideside Pickup

Tires supplied by various manufacturers

GMC has been offering tough quality trucks with value since 1902. Now, as then, our goal is to employ design, engineering, and manufacturing procedures that anticipate the technology of the future. Our 1985 line of full-size Pickup trucks demonstrates how well we have achieved our goals.

Throughout the General Motors Corporation the skills of thousands of people unite to design trucks that meet high standards for quality build, comfort, convenience,



Research

aerodynamic efficiency, corrosion protection, and paint quality.

Testing and retesting occur before a truck design is approved for tooling and assembly. Light Duty truck prototypes are tested in a huge wind tunnel to determine air drag. After each gasoline or diesel engine is assembled, it is operated on a test stand and inspected to verify proper operation. Other data is elicited from grueling evaluation during actual driving tests under



GM Proving Ground

diverse road and climatic conditions at GM Proving Grounds in Millford, Michigan; Mesa, Arizona; Pikes Peak, Colorado; and Kapuskasing, Canada.

The results of all this research, planning, design, testing, and quality-controlled assembly are the trucks that the people at GMC are proud to invite you to see and test drive — the 1985 GMC Full-Size Pickups.



Manufacturing

## GMC PICKUP AND CAB & CHASSIS MODEL AVAILABILITY

ALL MODELS AVAILABLE WITH GASOLINE OR DIESEL POWER	PICKUPS					CAB & CHASSIS			
	WIDESIDE CONVENTIONAL CAB	FENDERSIDE CONVENTIONAL CAB	WIDESIDE BONUS/CREW CAB	CONVENTIONAL CAB	BONUS/CREW CAB	CONVENTIONAL CAB	BONUS/CREW CAB	BONUS/CREW CAB	BONUS/CREW CAB
WHEELBASE, IN	117.5	131.5	117.5	131.5	164.5	131.5	135.5	159.5	164.5
BOX LENGTH, FT	6-1/2	8	6-1/2	8	8	—	—	—	—
C-1500 (2-WD)	X	X	X	X	X	X	X	X	X
C-2500 (2-WD)	X	X	X	X	X	X	X	X	X
C-2500/CBP (2-WD)	X	X	X	X	X	X	X	X	X
C-3500 (2-WD)	X*	X	X	X	X	X	X*	X*	X*
C-3500/C7C (2-WD)	X	X	X	X	X	X+	X+	X+	X+
K-1500 (4-WD)	X	X	X	X	X	X	X	X	X
K-2500 (4-WD)	X	X	X	X	X	X	X	X	X
K-2500/CBP (4-WD)	X	X	X	X	X	X	X*	X+	X*
K-3500 (4-WD)	X*	X	X	X	X	X	X*	X+	X*
K-3500/C7E (4-WD)	X	X	X	X	X	X+	X+	X+	X+

CBP = HD Chassis C7C = 10,500-lb GVWR C7E = 11,000-lb GVWR \* Available with dual rear wheels + Dual rear wheels standard

# GMC SIERRA CLASSIC . . . Leader in Luxury



2-WD Series C-1500 Sierra Classic Wideside Pickup. For '85, All Seasons tread, steel-belted radial-ply tires are standard on C/K-1500

## SIERRA CLASSIC IS LUXURY

Sierra Classic is our top available trim level with an extra touch of style outside and a color-coordinated interior with ultra comfort and convenience features.

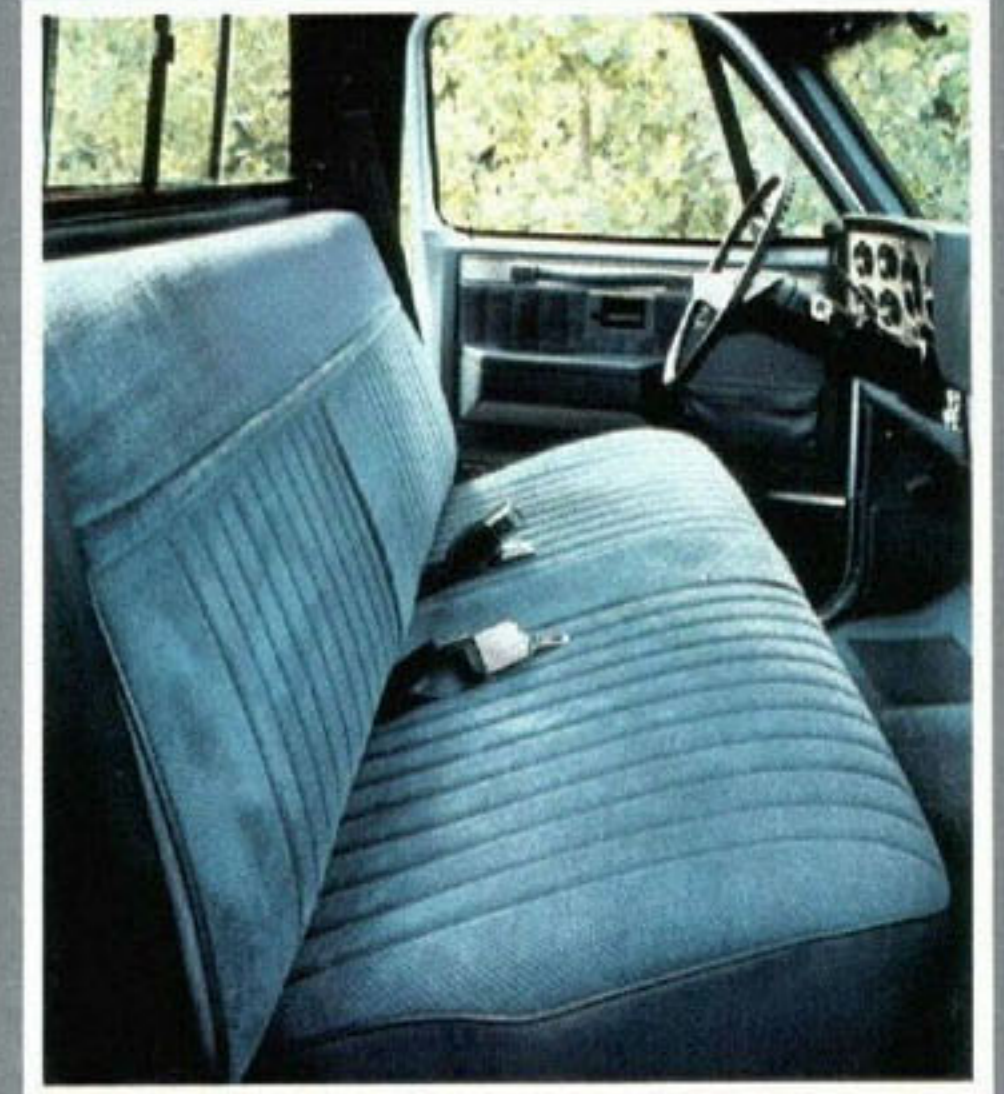
## NEW FRONT END STYLING

The Sierra Classic exterior features dual headlamps with new bezels, newly styled grille with parking lamps placed behind the lower corners, bright tailgate applique, and Sierra Classic Identification plates and dual horns. Bright trim moldings give these Pickups an impressive sparkle. Sierra Classic also includes extra sound-deadening insulation.

## NEW CUSTOM INTERIORS

For the smart interior, you may choose between new custom pigskin-grained vinyl or new custom textured velour cloth in Charcoal, Blue, Mahogany, Saddle Tan, or Burgundy, depending upon model. The rest of the interior is color-keyed to your color choice. Sierra Classic also includes carpeting, pewter-tone trim plates on doors and instrument panel, right visor mirror, cigarette lighter, lighted ashtray, custom steering wheel, closing-assist straps and map pockets on front doors, and more! (See pages 13 through back cover for details about all GMC Pickups, including Sierra Classic.)

Ask your GMC Dealer for a full size pickup Demonstration Drive in a Sierra Classic.



Sierra Classic interior with new custom cloth bench seat



High-style recreation in a K-1500 Sierra Classic Wideside Pickup with available custom two-tone paint



Sierra Classic instrument panel with brushed, pewter-tone instrument cluster face

# GMC HIGH SIERRA Beauty... and It's Tough!

## HIGH SIERRA...SPECIAL DISTINCTION

High Sierra trim adds a special distinction to rugged GMC gasoline- and diesel-engine Pickups.

The available High Sierra package includes dual electric horns and bright moldings around the windshield, rear window, front side marker lamps, and Wideside Pickup tail lamps. Wideside Pickups have bright-trimmed black plastic body side and rear moldings on single-rear-wheel models. Dual-rear-wheel models have bright trim on the wheelhouse extension clearance lamps.

## HIGH SIERRA FEATURES

The High Sierra color-keyed interior features a padded instrument panel with black crackle-finish applique, pewter-tone instrument cluster bezel, and a bright High Sierra nameplate. Luxury items include a cigarette lighter with illuminated ashtray, dome lamp with door-operated switches, and color-keyed floor mat. To help reduce noise, extra insulation is added to the cowl underside and cab back panel.

A choice of dual-tone cloth or new custom vinyl trim is offered on 2-door cab Pickups for the 3-passenger full-foam bench seat. '85 colors are Charcoal, Blue, Mahogany, Saddle Tan, and Burgundy.

There are more good things for GMC High Sierra Pickups. See pages 13 through back cover for details. Some trim items are not included on all models. Check page 18 for details.

Ask your GMC Dealer for a Demonstration Drive.



High Sierra 4-WD K-1500 Wideside Pickup



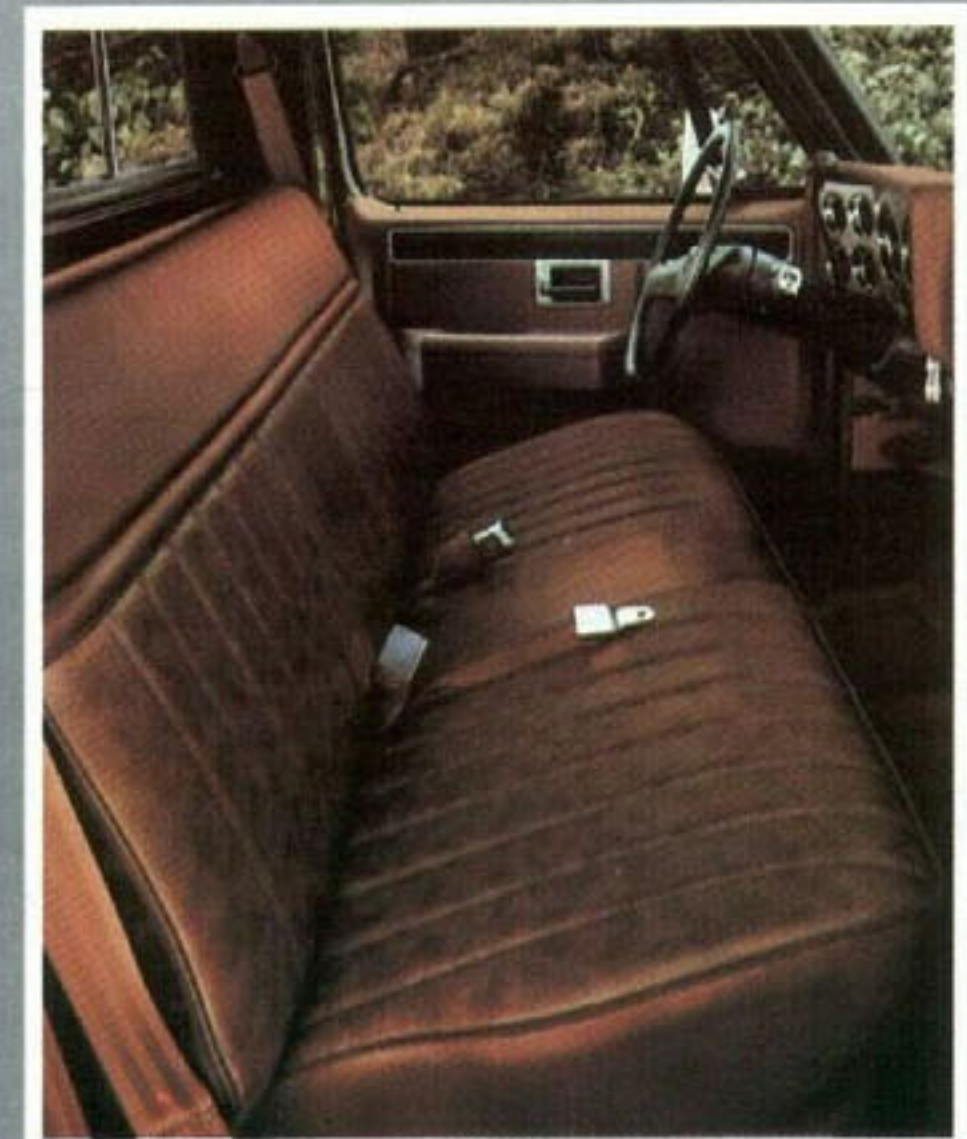
GMC High Sierra 2-WD C-1500 Wideside Pickup with available Special Two-Tone paint.



High Sierra instrument panel

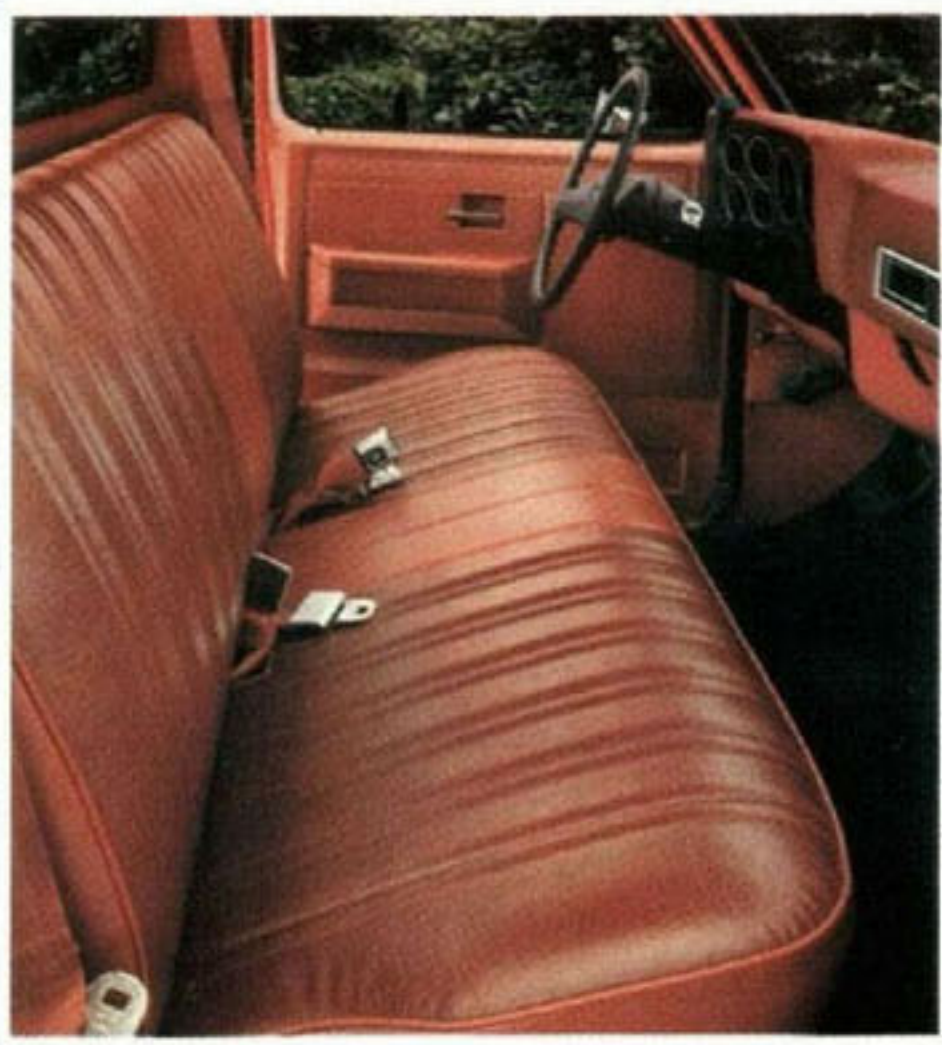


4-WD Series K-1500 High Sierra Fenderside Pickup



High Sierra interior with new custom vinyl seat trim

# GMC SIERRA ...Quality-Built Pickup



Sierra standard interior with standard vinyl seat trim



2-WD Series C-1500 Sierra Fenderside Pickup



2-WD Series C-2500 Sierra Wideside Pickup with available two-tone paint and other equipment

Our aerodynamically styled standard Sierra Pickups offer extraordinary value. Outside you'll find high-gloss, solid-color paint in a choice of 10 brilliant colors. Standard trim includes a chrome front bumper, chrome-finish dual mirrors, bright metal hubcaps, bright drip moldings, and bright headlamp and grille outline moldings. A wet-arm windshield washer system is new for '85. And for '85 our C/K-1500 Pickups ride on standard 15" steel-belted radial tires with All Seasons mud and snow tread. 4-WD K-3500 models now have clearance and identification lamps on the roof and tailgate along with a 66-amp generator.

Sierra nameplates with series designation appear on the front fenders. Pickup tailgate bears embossed white GMC lettering (black on White trucks). Diesel models have a stand-up hood ornament with 6.2 Liter Diesel lettering and special identification plates on the front fenders and Wideside tailgate.

We've planned the interior to be comfortable and eye-catching. The 3-passenger, full-width bench seat has grained vinyl trim in your choice of Blue, Mahogany, Charcoal, Burgundy, or Saddle Tan (Blue, Saddle Tan, or Burgundy for Bonus/Crew Cabs). For '85 the seat-back angle and seat cushion contour have been revised for improved comfort.

The interior also includes embossed black rubber floor covering and a padded instrument panel with bright-trimmed black crackle-finish on the instrument cluster faceplate and instrument panel pad applique.

Ask your GMC Dealer for additional information about GMC full-size Pickups. Also see pages 13 through back cover for drivetrains, technical data, and standard and optional equipment for all 1985 GMC Pickups, including Sierra.



Instruments and controls for heater and available air conditioning and radio are positioned for convenience.

# GMC 4-WD TRACTION

## SHIFT TO GMC 4-WD FOR WORK OR FUN

We offer a full line of rugged four-wheel drives: Widesides, Fendersides, Bonus Cabs, Crew Cabs, Cab & Chassis models, long boxes, short boxes, gasoline-engine models, diesel-engine models. And, a properly equipped GMC K-3500 Pickup can carry a payload up to 4768 lb (includes passengers, cargo, and equipment), or it can have a gross combination weight rating for trailering up to 17,500 lb (includes vehicle, equipment, passengers, cargo, and trailer). See your GMC Dealer for details.

## MANUAL HUBLOCKS STANDARD FOR 1985

We believe you'll appreciate the dependability afforded with our standard manual hublocks, especially when you want to equip your GMC 4-WD model for heavy-duty applications such as snowplowing. And, in such cases, we also recommend equipping your K-1500/2500 vehicle with our available heavy-duty front and rear shock absorbers. If your type of operation is less strenuous, you may want to specify available automatic hublocks on K-1500 models which permit no-stop shifting into 4-WD at speeds up to 25 MPH. Before ordering, we suggest you check with your GMC Dealer about '85 hublock availability.

## EQUIPPED FOR PERFORMANCE

A new 4.3 Liter Vortec V6 is the standard gasoline engine for K-1500 Series. It has a 9.3 to 1 compression ratio and features Electronic Spark Control. Standard 4-WD equipment includes power steering, power brakes, heavy-duty front stabilizer bar, and 4-speed manual transmission with sealed clutch housing and new hydraulic clutch control. A Front Quad Shock package, available for K-1500/2500 models, consists of four 25-mm front shock absorbers, two 32-mm heavy-duty rear shocks, and a frame-mounted front-axle pinion nose bumper to help limit front-axle windup.

## CHOOSE YOUR TRIM LEVEL

GMC 4-WDs come in Sierra, High Sierra, and Sierra Classic trim levels that offer essentially the same equipment as 2-WDs. See page 3 for available models, and pages 13 through back cover for standard and available equipment and technical data.

Select the GMC 4-WD Pickup that suits your needs at your GMC Truck Dealer.



4-WD GMC Pickup and Cab & Chassis models are a popular choice when hard work or serious play is afoot



Snow-plowing in a 4-WD Series K-3500 High Sierra Wideside Pickup



4-WD Series K-1500 Sierra Classic Wideside Pickup

# BONUS & CREW CAB PICKUPS



2-WD Series C-3500 Sierra Classic Wideside Crew Cab with available dual rear wheels and 10,000-lb GVWR



High Sierra interior with standard vinyl bench seats

These big, hardworking four-door Pickups offer gasoline- or diesel-engine models with two-wheel drive (C-2500/3500) or four-wheel drive (K-3500). Bonus and Crew Cab Pickups have a 164.5" wheelbase and 8'-long Wideside cargo box. They're available also as C/K-3500 Cab & Chassis models.

Crew Cab has a 6-passenger cab with full-width, full-depth front and rear bench seats. Bonus Cab has no rear seat; instead there are 55.8 cu ft of lockable load space behind the front seat. Rear doors on both sides of Bonus and Crew Cabs simplify passenger entry or cargo loading, and for '85 are equipped with automatic dome light switches.

### THREE COMFORT AND TRIM LEVELS

Bonus and Crew Cabs are available in Sierra, High Sierra, and Sierra Classic trim levels with most of the paint schemes available for 2-door models, including the Special Heavy Hauler trim for dual-rear-wheel models. The color-coordinated interior comes in Blue, Burgundy, or Saddle Tan.

### CONVENIENCE OPTIONS

You can have the convenience of power operation for all door locks and side windows. And, we offer a large selection of sound equipment with available AM, AM/FM and AM/FM stereo radio with or without stereo cassette tape. Windshield antenna is included with all radios.

See pages 13 through back cover for drivetrains, standard and available equipment, and technical data.

### CAMPER SPECIAL CHASSIS EQUIPMENT

This available package includes a camper body wiring harness and other equipment, depending upon model, to permit your Bonus or Crew Cab Pickup to use a slide-on camper body. The package also is available for selected conventional cab Pickup and Cab & Chassis models. See your GMC Dealer for details.

### DEMONSTRATION DRIVES

Ask your GMC Dealer for a Demonstration Drive in a GMC Pickup truck.

# CAB & CHASSIS MODELS



Sierra Cab & Chassis shown with available dual rear wheels. Dump body is available from aftermarket equipment suppliers.

A rugged GMC Cab & Chassis gasoline or diesel model can handle a variety of special jobs. Regular Cab and Bonus & Crew Cab, 2-WD or 4-WD Cab & Chassis are adaptable to a wide range of box and body configurations from 7' to 13' long. See pages 13-19 for further details.

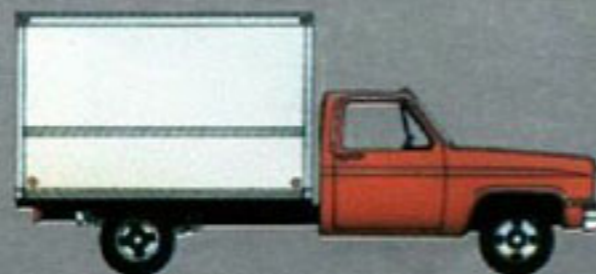
Vocational bodies are supplied to GMC Dealers by outside suppliers, independently of GMC, which is not responsible for the safety or design features, materials or workmanship of any alteration by any such supplier.

### MODEL AVAILABILITY

MODEL	NOMINAL RATING AND TYPE	WHEELBASE (Inches)	OVERALL LENGTH (Inches)	MAXIMUM GVWR (Pounds)	MAXIMUM PAYLOAD (Pounds)	
					GAS	DIESEL
<b>CONVENTIONAL CAB</b>						
TC29903	3/4 Ton, 2-WD	131.5	206.3	8600	4800	4297
TC30903	1 Ton, 2-WD			9000	5012	4536
TK30903	1 Ton, 4-WD			9200	4733	4276
TC31003	1 Ton, 2-WD	135.5	215.8	10,000*	5777	5300
TC31003/C7C+				10,500*	6175	5767
TC31403	1 Ton, 2-WD	159.5	238.8	10,000*	5717	5231
TC31403/C7C+				10,500*	6115	5698
TK31003	1 Ton, 4-WD	135.5	215.6	10,000*	5290	4826
TK31003/C7E+				11,000*	6162	5823
TK31403	1 Ton, 4-WD	159.5	239.7	10,000*	5226	4752
TK31403/C7E+				11,000*	6092	5747
<b>CREW CAB/BONUS CAB</b>						
TC30943	1 Ton, 2-WD	164.5	239.3	10,000*	5468	5008
TC30943/C7C+				10,500*	5523	5374
TK30943	1 Ton, 4-WD	164.5	239.3	10,000*	4829	4463
TK30943/C7E+				11,000*	5782	5436

\*GVW with dual rear wheels

+ Requires available large-size mirrors



Cab & Chassis with van body



Cab & Chassis with utility body



Cab & Chassis with tow truck equipment

# GMC GASOLINE OR DIESEL POWER



6.2 Liter V8 Diesel

We've given our C/K-1500 and light-duty-emission C-2500 Pickups more power in '85 with a new standard 4.3 Liter Vortec V6 gasoline engine. There's also a wide selection of V8 gasoline engines and a 6.2 Liter V8 diesel matched with efficient drive-trains so you have a choice of power for your GMC truck. See charts below and page 17 for details and model availability.

## NEW 4.3 LITER (262 CID) VORTEC POWER

The 4.3 Liter Vortec V6 gasoline engine has a 9.3 to 1 compression ratio and ESC (Electronic Spark Control) for impressive acceleration and performance. This new 90° V6 engine features a quadjet carburetor open loop system. The closed loop system is used in California. Additional features include central spark plug location for impressive firing of fuel air mixture, swirl inlet ports to mix the air and fuel more completely, and stainless steel exhaust manifolds.

## 4.8 LITER (292 CID) IN-LINE SIX GASOLINE

A tough in-line six engine with a one-barrel carburetor. Hardworking value makes it a natural choice for vehicles over 8500 lbs GVWR.



New 4.3 Liter Vortec V6 gasoline engine



5.0 Liter V8 gasoline engine with ESC

## 5.0 LITER (305 CID) V8 GASOLINE WITH ELECTRONIC SPARK CONTROL

The 5.0 V8 offers impressive acceleration and performance because of its high, 9.2 to 1, compression ratio. An Electronic Spark Control system (not available in California) helps control engine knock. Another 5.0 Liter V8 without Electronic Spark Control is available for California (see chart below).

## 7.4 LITER (454 CID) V8 GASOLINE

A large-displacement powerhouse with the torque to handle big jobs. It's available for most models with 8500-lb or higher GVW. With available air conditioning, this engine will include an electric booster fan to provide additional cooling at idle.

## 6.2 LITER (379.4 CID) V8 DIESEL

This naturally aspirated truck diesel is equipped with a sophisticated fuel filtration system that helps provide protection against water and dirt in fuel, and is contained in one integral unit located in the engine compartment for easy servicing. This system includes a two-stage fuel filter, fuel/water separator, water drain, electric fuel heater, and water-in-fuel and fuel-filter-change sensors with sending unit to a warning light on the instrument panel.

### A WORD ABOUT ENGINES

GMC Trucks are equipped with engines produced at facilities operated by GM car and truck groups, subsidiaries or affiliated companies worldwide.

### ENGINES WITH LIGHT-DUTY CERTIFICATION FOR MODELS UNDER 8,500-LB GVW, 49 STATES

DISPLACEMENT/TYPE	4.3 LITER 4-BBL, V6	5.0 LITER 4-BBL, V8 WITH ESC	5.7 LITER 4-BBL, V8	6.2 LITER V8 DIESEL
ENGINE ORDERING CODE	LB1	LE9	LS9	LH6
BORE & STROKE (IN)	4.00x3.48	3.74x3.48	4.0x3.48	3.98x3.80
COMPRESSION RATIO	9.3 to 1	9.2 to 1	8.2 to 1	21.3 to 1
SAE NET HORSEPOWER @ RPM	155 @ 4000	160 @ 4400	165 @ 3800	130 @ 3600
SAE NET TORQUE (LB/FT) @ RPM	230 @ 2400	235 @ 2000	275 @ 1600	240 @ 2000

ESC = Electronic Spark Control

### ENGINES WITH LIGHT-DUTY CERTIFICATION FOR MODELS UNDER 8,500-LB GVW FOR CALIFORNIA

DISPLACEMENT/TYPE	4.3 LITER 4-BBL, V6	5.0 LITER 4-BBL, V8	5.7 LITER 4-BBL, V8	6.2 LITER V8 DIESEL
ENGINE ORDERING CODE	LB1	LF3	LS9	LH6
BORE & STROKE (IN)	4.00x3.48	3.74x3.48	4.0x3.48	3.98x3.80
COMPRESSION RATIO	9.3 to 1	8.6 to 1	8.2 to 1	21.3 to 1
SAE NET HORSEPOWER @ RPM	155 @ 4000	155 @ 4000	165 @ 3800	130 @ 3600
SAE NET TORQUE (LB/FT) @ RPM	230 @ 2400	245 @ 1600	275 @ 1600	240 @ 2000

### ENGINES WITH HEAVY-DUTY CERTIFICATION FOR MODELS ABOVE 8,500-LB GVW, 50 STATES

DISPLACEMENT/TYPE	4.8 LITER 1-BBL, L6†	5.7 LITER 4-BBL, V8	7.4 LITER 4-BBL, V8	6.2 LITER V8 DIESEL
ENGINE ORDERING CODE	L25	LT9	LE8	LL4
BORE & STROKE (IN)	3.9x4.1	4.0x3.48	4.25x4.0	3.98x3.80
COMPRESSION RATIO	7.8 to 1	8.3 to 1	7.9 to 1	21.3 to 1
SAE NET HORSEPOWER @ RPM	115 @ 3600	160 @ 3800 +	230 @ 3800	148 @ 3600
SAE NET TORQUE (LB/FT) @ RPM	215 @ 1600	250 @ 2800 +	360 @ 2800	246 @ 2000

†Produced by GM de Mexico + California 155 @ 4000 RPMs, torque 240 @ 2800 RPMs



# GMC PICKUP DEEP-DOWN QUALITY & VALUE

**Tough Girder-Beam Independent Front Suspension...**On two-wheel-drive models each wheel takes bumps and ruts individually to soak up road shocks and help smooth the ride. Matched coil springs are computer selected (see picture on opposite page). **High-Energy Ignition System...**standard on all gasoline engines, delivers up to 35,000 volts to each spark plug to help burn marginal fuel/air mixtures. Helps cold-weather starting. **Flow-Through Power Ventilation...**A standard comfort feature that draws in outside air through a large cowl-integrated plenum chamber when the heater fan is on, routes it through the cab, exiting through door-mounted vents (see picture on opposite page). **Four-Wheel Drive...**features a front hypoid driving axle with capacities up to 4500 lbs on K-3500 models. Tough leaf springs in conjunction with heavy-duty shock absorbers contribute to a good ride. **They're Built Right!** Every tough GMC truck is assembled from high-quality materials and component parts, using advanced high-technology construction techniques. Here's how... **Ladder-Type Steel Frame...**A rigid foundation of strong steel side rails and crossmembers. **Rear Suspension...**Shock absorbers are counter-angled to help control power and brake hop. Standard two-stage multileaf springs contribute to a smooth ride. Their vari-rate design provides a soft ride with a light load. Springs become progressively stiffer as the load increases. Heavy-duty springs are available. **Salisbury-Type Rear Axle...**Semifloating or full-floating axles, depending upon model, feature a wide range of ratios. A locking differential is available with some axle ratios. See back cover for specifications. **Brakes Computer-Matched To Vehicle GVWR...**System includes self-adjusting, finned rear drum brakes and front disc brakes with an audible warning when linings may need replacing. All front brakes use semimetallic linings. Power brakes are standard on all models except gasoline-engine C-1500 Pickups where they are available. Heavy-duty power brakes are available for C-1500 Pickups and C/K-2500 conventional cab Pickups below 8500 lbs

GVWR (standard on all other models). **Height-Sensing Heavy-Duty Power Brakes...**Braking force is distributed proportionately to front and rear wheels by a sensing valve that responds to changes in vehicle trim height caused by variations in the rear-axle load. This system is standard on C/K-2500/3500 models over 8500 lbs GVWR, and available for C/K-2500 conventional cab Pickups under 8500 lbs GVWR when heavy-duty power brakes are specified. **Shielded Fuel Tanks...**Fuel tanks have a plastic shield to help prevent stone damage. Standard 16-gallon tank on 1500 Series with 117.5" wheelbase; 20-gallon tank on all other models. Dual 16- or 20-gallon tanks are available, depending upon model. See technical information on back cover for details. **High-Efficiency Radiator...**with lots of fins to provide a large surface for cooling. **Batteries Are Maintenance-Free...**That means you'll never have to add water to the Delco Freedom II battery. Also, the battery (two on diesel models) has a built-in charge indicator plus corrosion-resistant terminals. **Delcotron Generator...**Features a solid-state voltage regulator. Standard capacity is 37 amps, except on diesel-engine models and gasoline-engine K-3500 models where a 66-amp generator is provided. The 66-amp unit is available for all other models, except where already included in other available equipment. See your GMC Dealer for details. **New Wet-Arm Windshield Washer/Wiper System...**It's standard on all 1985 GMC Pickups for efficient windshield cleaning. Washer nozzles are mounted on wiper arms for a more precise spray of washer fluid. System includes a new wiper transmission for improved corrosion protection and quieter operation. **New Hydraulic Clutch Controls...**Standard with manual transmissions, the new clutch controls are automatic-adjusting, give a good pedal feel, and help eliminate in-cab noise caused by engine vibration. **Steel-Belted Radial Tires With All Seasons Tread...**In 1985 all standard and optional steel-belted radial 15" highway tires for C/K-1500 models feature an All Seasons tread for good year-round traction. **Cast Aluminum Wheels Available For C/K-1500 Series...**This option includes four lightweight cast-aluminum wheels and a spare wheel (either regular or Rally type, depending upon tires). **Double Walls Of Steel...**in hood, front fenders, cab upper back panel, doors, and Wideside cargo box sidewalls and tailgate contribute to overall structural rigidity. Large, generous panels are used in many areas, including front-end sheet metal. **Doors...**Made of one-piece inner and outer panels for double-wall strength. One-piece door frame stampings, an integral part of the cab structure, help pro-

vide precise fit, alignment, and sealing of doors. **Front Fenders...**Double-wall panels of pre-coated steel. Bathtub-type wheelhousings with attached shields help reduce engine compartment road splash. **Wideside Cargo Box And Tailgate...**Cargo box sidewalls and tailgate use rigid double-wall construction to help protect outer panels from unsightly dents. Tailgate latch is one-hand operated. Tailgate opens flat to accommodate overhanging loads, or can quickly be unfastened and removed entirely. Front stake pockets plus center pockets on 8' boxes have convenient holes for cargo tie-down. **GMC Pickups Versus Rust...**Here are some of the extensive anti-corrosion measures used in 1985 Pickups:

- Built-in anti-corrosion measures include front fender skirts; urethane stone shields ahead of Wideside rear-wheel openings; hemmed Wideside tailgate; front wheelhousing-to-frame seals; rubber weatherstripping around doors and windows; drainage holes in some double-wall areas.
- Special metals are used for various parts of sheet metal, cab, doors, and cargo box; these include Zincrometal, zinc-plated steel, one- or two-side-galvanized steel, and zinc-iron-alloy coated steel.
- Standard paint treatment includes zinc-rich primer applied to certain vulnerable areas; a final primer that leaves a thick prime coat on the entire cab, doors, sheet metal, and cargo box; and a final coat of baked-on acrylic enamel.
- Aluminum wax preservative is applied to many lower inner body surfaces to resist damage from corrosion.
- Special metals and coatings are used for many nuts, bolts, and assemblies.

**As Part Of The GMC New-Vehicle Limited Warranty, Perforation From Corrosion Is Covered For Three Years...**Exhaust system components are not included. See your GMC Dealer for details of other limitations.

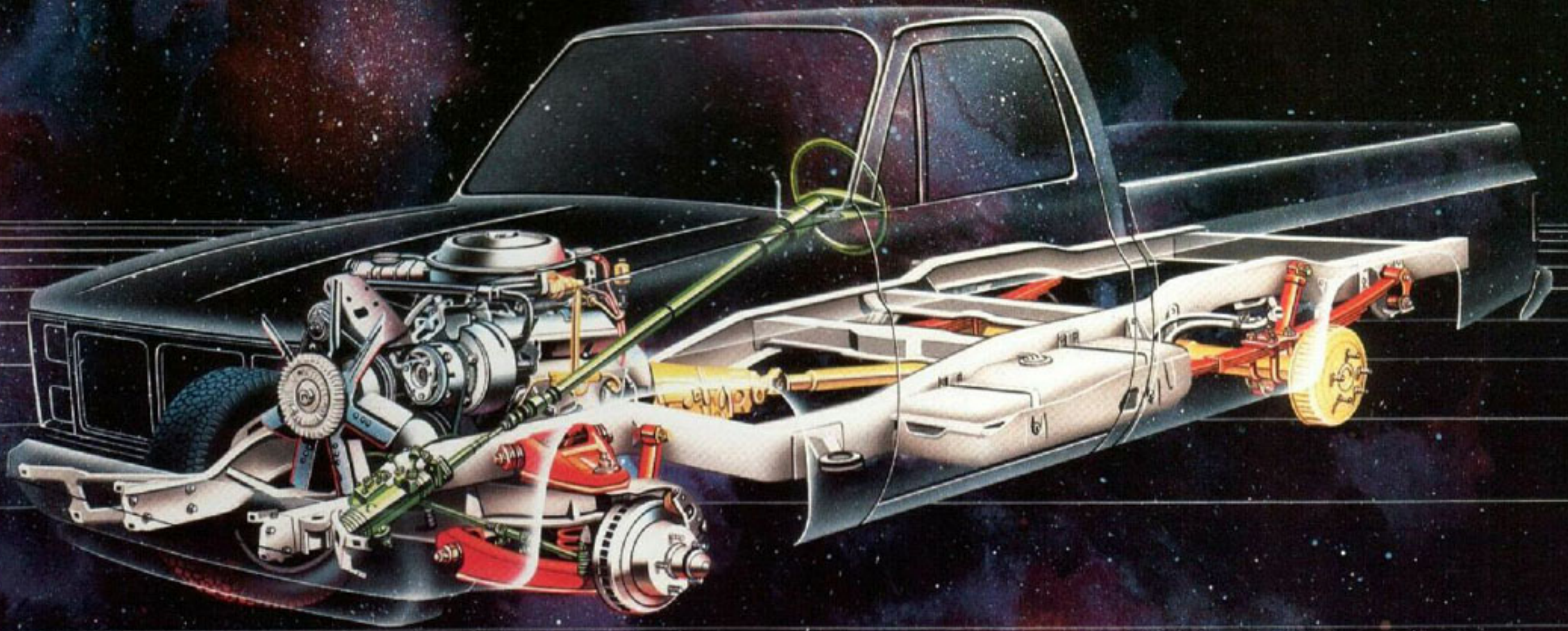
**GM Protection Plan...**An option that offers service protection beyond that provided by GM's new vehicle limited warranty. Available only in the USA and Canada during the 1985 model year. See your dealer for details.



High Energy Ignition



Delco Freedom II battery

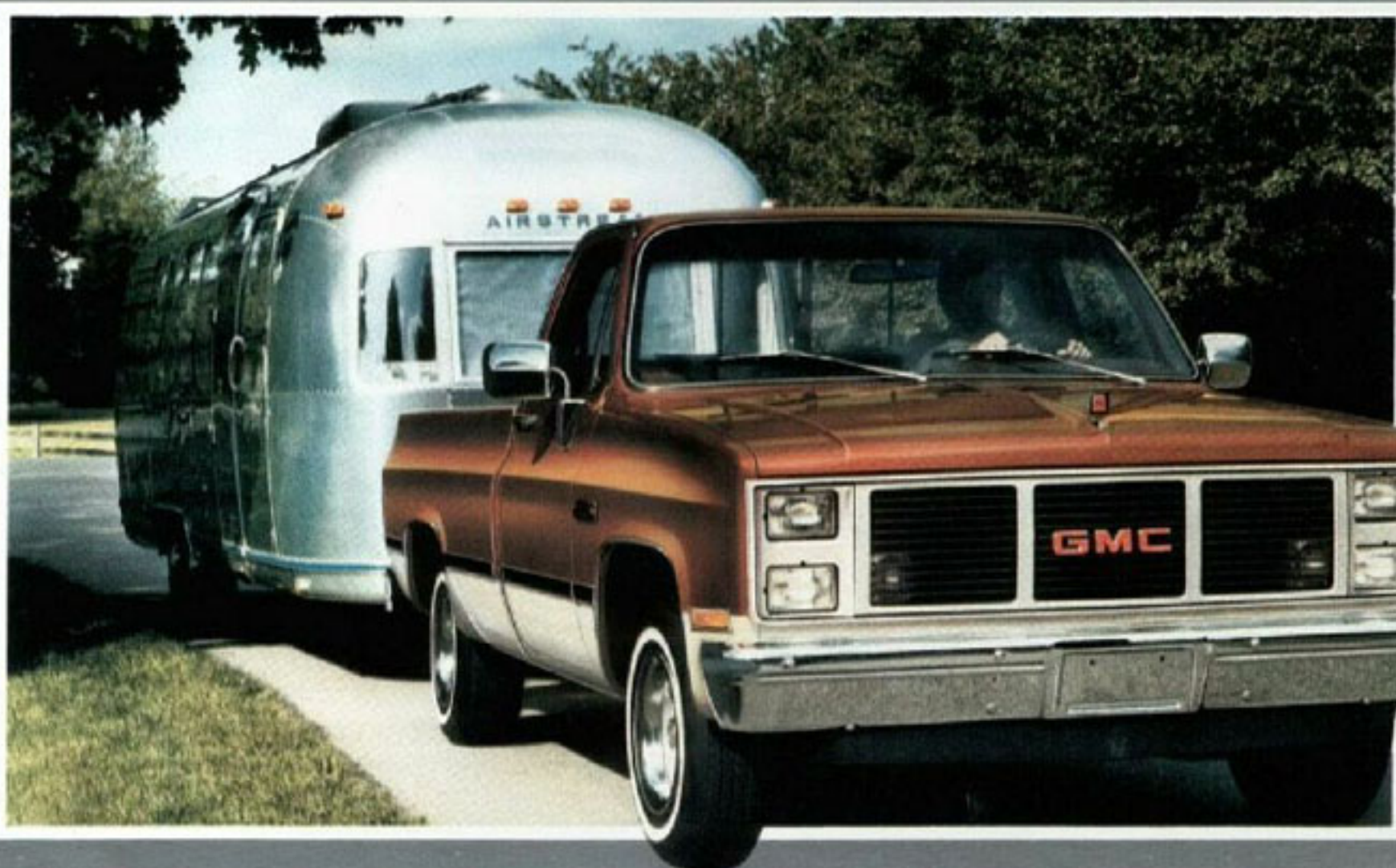


For added satisfaction and value you may accessorize your GMC truck with a vast array of available equipment. Please note that some of the items listed below may be standard or not available on certain models, or may require or be included with other available equipment. Consult your GMC Dealer for details.

**AVAILABLE APPEARANCE EQUIPMENT** includes:  High Sierra and Sierra Classic interior/exterior trim packages  Deluxe front appearance (includes dual headlamps)  Color-keyed rubber front floor mats for Sierra Classic  Black and bright body side moldings (Wideside)  Custom and deluxe molding packages (Wideside)  Chromed front bumper guards  Chromed rear bumper  Door edge guards  Rally wheels or styled wheels (C/K-1500)  Cast aluminum wheels (C/K-1500)  Bright wheel covers.

**AVAILABLE COMFORT AND CONVENIENCE EQUIPMENT** includes:  Air conditioning  Delco radios include windshield antenna: AM, AM/FM, AM/FM stereo, AM/FM stereo with cassette  Electronic speed control  Intermittent windshield wipers  Cigarette lighter with ashtray illumination  Gage package: voltmeter, oil pressure and temperature gages  Electric clock  Power door locks  Power windows  Tinted glass, all windows  Dome lamp with door-operated switches  Mirrors: camper, West Coast, below-eyeline  Halogen hi-beam headlamps  Roof marker lamps  Cargo area lamp  Automatic transmission  Power brakes or heavy-duty power brakes  Front tow hooks  Glide-out or side-mounted spare tire/wheel carrier  Power steering (2-WD)  Chromed (Wideside) or painted rear step bumpers  Windshield antenna (included with factory-installed radios)  Cold Climate package  HD Heater  Pickup box side rails  Comfortilt steering wheel  Sliding rear window

**AVAILABLE CHASSIS EQUIPMENT** includes:  Commercial special chassis equipment (C-3500)  High-altitude emission equipment  Air cleaner precleaner  66-amp Delcolron generator  HD and auxiliary Delco Freedom batteries  HD radiator  Engine oil cooler  HD radiator and transmission oil cooler  Locking differential rear axle  HD front/rear springs  Shock absorbers, HD front/rear  Front Quad Shocks (K-1500/2500)  Front stabilizer bars (2-WD models)  4-WD transfer case shield  Camper Special equipment  Engine block heater  Dual rear wheels  Auxiliary fuel tank  Selected highway and on/off-road tires



Sierra Classic 2-WD Pickup with Special Two-Tone paint



Air conditioning



GM-Delco AM/FM stereo radio with cassette tape player



Electric clock with solid-state quartz mechanism (option includes gage-type instrument cluster, except on Sierra Classic where standard)



Power windows and power door locks



Below eyeline mirrors



Comfortilt steering wheel



Chromed front bumper guards



Sliding rear window

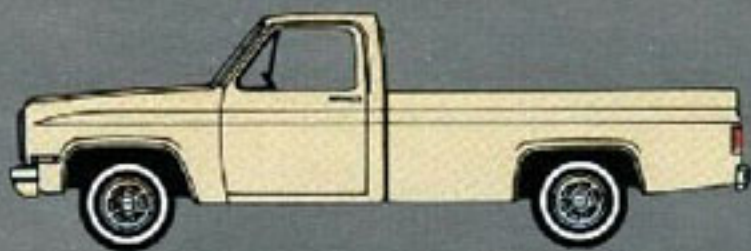


Rally wheels



New cast aluminum wheels; tires supplied by various manufacturers

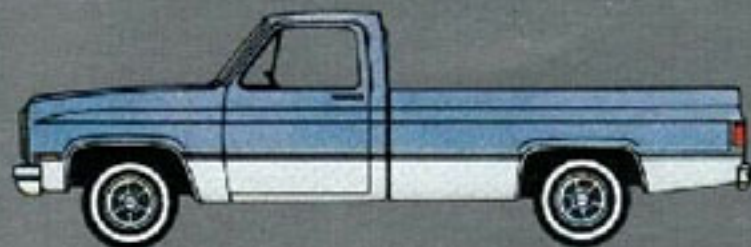
## AVAILABLE PAINT SCHEMES



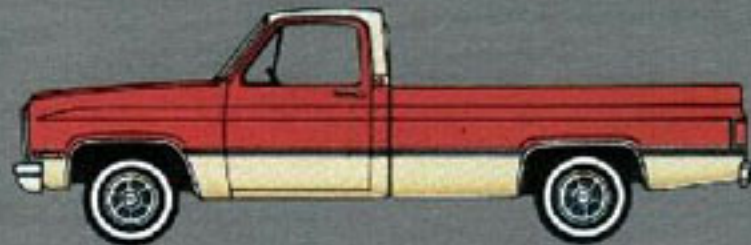
Standard solid color paint. Ask about available Value Decor Package.



Available Conventional Two-Tone includes back panel beltline molding, except on Sierra Classic where standard



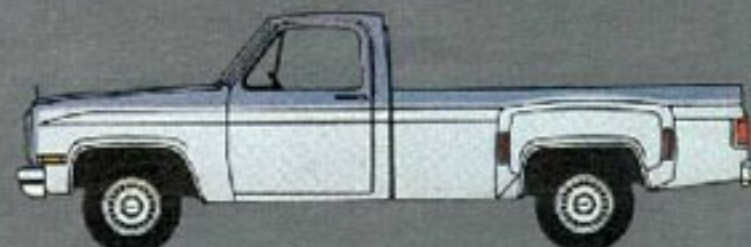
Available Special Two-Tone for single-rear-wheel Wideside includes body side/rear moldings on Sierra models, wheel-opening moldings on Sierra and High Sierra models, and bright trim for front side marker and tail lamps on Sierra models



Available Deluxe Two-Tone combines paint placement and moldings of Conventional and Special Two-Tone schemes (single-rear-wheel Wideside models only)



New available Custom Two-Tone for single-rear-wheel conventional cab Wideside includes hood ornament on gasoline-engine models and color-coordinated striping. Upper secondary color extends across tailgate, up cab lock pillar, across cab roof, and inside of pickup box. Not available with body side moldings.



Available Special Heavy Hauler Two-Tone paint and trim for dual-rear-wheel Wideside Pickups

## POWERTRAINS

ENGINE	ENGINE AVAILABILITY BY MODEL		TRANSMISSIONS					REAR AXLE RATIOS (STD TRANS/STD GVW) (1)		
			MANUAL		AUTOMATIC			STD	AVAILABLE	
			3-SPD (MM3)	4-SPD (MM4)	4-SPD OD (MM7)	4-SPD OD (MX0)	3-SPD (MX1)			
4.3 LITER V6 GAS (LB1)	S	TC107-10903 (2)	S	A	A	A	A	2.73	3.08	
	S	TC107-10903 (3)	S		A	A		2.73		
	S	TC20903 (2) (4)		S		A		3.42	3.73	
	S	TK107-10903		A	S (2)	A		3.42	3.73	
4.8 LITER L6 GAS (L25)	S	TC20903 (5); TC20943		S				4.10	4.56	
	S	TC309-310-31403 (SR)		S			A (6)	4.10	4.56	
	S	TC/TK310-31403 (DR)		S			A	4.56		
	S	TC30943 (SR)		S			A (6)	4.10	4.56	
	S	TC30943 (DR)		S			A (6)	4.56		
	S	TK20903 (5)		S				4.10		
	S	TK309-31003 (SR)		S			A (6)	4.56		
	S	TK30943 (SR)		S			A (6)	4.56		
5.0 LITER V8 GAS WITH ESC (LE9) (2)	A	TC107-10903S	A	A	A	A		2.73	3.08	
	A	TC20903 (4)		S		A		3.23	3.42	
	A	TK107-10903		A	S	A		3.42	3.73	
5.0 LITER V8 GAS (LF3)(3)	A	TC107-10903				A		2.73	3.08	
LD EMISSION	A	TC20903 (3) (4)				A		3.23	3.42	
5.7 LITER V8 GAS (LS9)	A	TK107-10903 (3)				A		2.73	3.08	
HD EMISSION	S	TK20903 (2) (4)		S		A		3.23	3.42	
	A	TC20903 (5)		S			A	3.42	3.73/4.10	
5.7 LITER V8 GAS (LT9)	A	TC20943		S			A	3.73	4.10/4.56	
	A	TC309-310-31403 (SR)		S			A	3.73	4.10/4.56	
	A	TC30903 (DR)		S			A (7)	4.10	4.56	
	A	TC310-31403 (DR)		S			A (7)	3.73	4.10/4.56	
	A	TC30943 (SR)		S			A	3.73	4.10/4.56	
	A	TC30943 (DR)		S			A (7)	4.10	4.56	
	A	TK20903 (5)		S			A	3.42	3.73/4.10	
	A	TK309-31003 (SR)		S			A	3.73	4.10/4.56	
	A	TK30903 (DR)		S			A (7)	4.10	4.56	
	A	TK310-31403 (DR)		S			A (7)	3.73	4.10/4.56	
	A	TK30943 (SR/DR)		S			A	3.73	4.10/4.56	
	7.4 LITER V8 GAS (LE8)	A	TC20903 (5); TC20943		S			A	3.21	3.73/4.10
		A	TC309-310-31403 (SR)		S			A	3.21	3.73/4.10/4.56
		A	TC30903-43 (DR)		S			A (7)	3.73	4.10/4.56
A		TC310-31403 (DR)		S			A (7)	3.73	4.10/4.56	
A		TC30943 (SR)		S			A	3.21	3.73/4.10/4.56	
A		TK309-31003 (SR)		S			A	3.73	4.10/4.56	
A		TK309-310-31403 (DR)		S			A (7)	3.73	4.10/4.56	
A		TK30943 (SR/DR)		S			A	3.73	4.10/4.56	
LD EMISSION	S	TC107-10903		A	S	A		2.73	3.08/3.42	
	S	TC20903 (2) (4)		S		A		3.42	3.73	
	S	TC20903 (3) (4)				S		3.23	3.42	
	S	TK107-10903		S	A	A		3.08	3.42	
	S	TK20903 (2) (4)		S		A		3.73	4.10	
	HD EMISSION	S	TC20903 (5)		S			A	3.73	4.10
S		TC20943		S			A	3.73	4.10	
S		TC309-310-31403 (SR)		S			A	4.10	4.56	
S		TC/TK30903 (DR)		S			A (7)	4.10	4.56	
S		TC/TK310-31403 (DR)		S			A (7)	4.10	4.56	
S		TC30943 (SR)		S			A	4.10	4.56	
S		TC30943 (DR)		S			A (7)	4.10	4.56	
S		TK20903 (5)		S			A	3.73	4.10/4.56	
S		TK20943		S			A	3.73	4.10/4.56	
S		TK309-31003 (SR)		S			A	4.10	4.56	
6.2 LITER V8 DIESEL (LH6)	S	TK30943 (SR)		S			A	4.10	4.56	
	S	TK30943 (DR)		S			A (7)	4.10	4.56	
	S	TK20903 (5)		S			A	3.73	4.10/4.56	
	S	TK20943		S			A	3.73	4.10/4.56	
6.2 LITER V8 DIESEL (LL4)	S	TK309-31003 (SR)		S			A	4.10	4.56	
	S	TK30943 (SR)		S			A	4.10	4.56	
	S	TK30943 (DR)		S			A	4.10	4.56	
	S	TK20903 (5)		S			A	3.73	4.10/4.56	
	S	TK20943		S			A	3.73	4.10/4.56	
	S	TK309-31003 (SR)		S			A	4.10	4.56	

S Standard

A Available at extra cost

SR Single rear wheels

DR Dual rear wheels

ESC Electronic spark control

1 Consult your dealer for other axle ratio applications, including High Altitude Emissions (NA6).

2 Except California

3 California only

4 Below 5500-lb GVWR

5 Above 5500-lb GVWR

6 Not recommended

7 Requires VQ2 HD transmission oil cooler

# STANDARD AND AVAILABLE EQUIPMENT

TRIM LEVEL		SIERRA (STD)	HIGH SIERRA (Z62)	SIERRA CLASSIC (YE9)	
<b>EXTERIOR APPEARANCE</b>					
GRILLE/HEADLAMP BEZELS	Light/Dark Argent Painted Grille; Bezels for Single Headlamps	S	S	—	
	Light/Dark Argent Painted Grille; Bezels for Dual Headlamps	X (1)	A (1)	S	
IDENTIFICATION	Body Side Nameplate	Base Cab: "Base Cab"	S	S	S
		Crew Cab: "3+3"	S	S	S
	Front Fender Nameplate	Plate with Trim Level and Series Designation	S	S	S
		"6.2 Liter Diesel" Plate (Diesel models)	S	S	S
	Grille Lettering	Integral GMC Letters	S	—	—
		Bright Applied GMC Letters	A (1)	S	S
	Hood Ornament	Bright with "6.2 Liter Diesel" Lettering (Diesel models)	S	S	S
		Bright with GMC Lettering (gasoline models)	A (2)	A (2)	A (2)
Tailgate Identification	Bright Applied GMC Letters (Wideside only)	—	—	S	
	"Diesel 6.2L" Nameplate (Wideside diesel models)	S	S	S	
ORNAMENTATION	Body Side/Rear Moldings (single rear wheel Wideside)	Black Plastic with Bright Trim	A	S	—
		Bright Plastic with Black Trim	A (3)	A	—
		Custom Black Plastic with Bright Trim	A (3)(4)	A (4)	—
		Deluxe Bright Plastic with Black Trim	A (3)(4)	A (4)	S (4)
	Bright Cab Back Panel Beltline Moldings	—	—	S	
	Bright Strip Moldings Over Side Doors	S	S	S	
	Bright Grille and Headlamp Bezel Grillwork Moldings	S	S	S	
	Bright Lamp Trim	Front Side Marker	—	S	S
		Side Rear Clearance (dual rear wheel Wideside)	—	S	S
		Tail (Wideside only)	—	S	S
	Bright Tailgate Applique (Wideside only)	—	—	S	
	Bright Windchests & Rear Window Moldings	—	S	S	
	WHEELS/WHEEL TRIM	Bright Metal Hubcaps (single rear wheel models)	S	S	S
		Bright Metal Wheel Covers (C-3500 with dual rear wheels only)	A	A	A
		Bright Metal Wheel Covers (C/K-1500 only)	A	A	A
Cast Aluminum Wheels (C/K-1500 only)		A	A	A	
Silver Painted Rally Wheels (C/K-1500 only)		A	A	A	
Special Bright Metal Wheel Covers (C/K-2500, C-3500 with single rear wheels only)		A	A	A	
White Painted Conventional Wheels (includes spare on C/K-1500)		S	S	S	
White Painted Styled Wheels (C/K-1500 only)		A	A	A	
<b>INTERIOR APPEARANCE</b>					
COMPL TRIM PANELS	Full Color-Keyed Plastic	Gasoline Models	—	—	S
		Diesel Models	S	S	S
DOOR TRIM PANELS	Cloth Insert in Armrest Area		—	—	S
	Color-Keyed Plastic Main Body with Integral Armrests		S	S	S
	Front Door Closing Assist Straps and Map Pockets		—	—	S
	Lower Carpeted Area with Bright Trim		—	—	S
	Rear Door Ashtrays (4-Door Cab)		S	S	S
	Upper Inserts	Black Crackle-Finish with Silver Outline (2-Door Cab)	—	S	—
Pewter-Tone Brushed Metal Finish		—	—	S	
FLOOR COVERING	Color-Keyed Carpeting (except Base Cab rear compartment)		—	—	S
	Color-Keyed Rubber Mat(s) (except Base Cab rear compartment)		—	S	—
	Embossed Black Rubber Mat(s) (S)		S	—	—
HEADLINER & MOLDINGS	2-Door Cab: Color-Keyed Perforated Cloth on Molded Fiberglass with Matching Retainer Moldings including Windshield Pillars and Upper Rear Quarter Panels		—	—	S
	4-Door Cab: Full-Length, Neutral-Colored Perforated Cloth on Molded Fiberglass with Matching Retainer Moldings including Windshield Pillar and Center Door Pillar Moldings		—	S	S
INSTRUMENT PANEL TRIM	Instrument Cluster Bezel	Black Crackle-Finish and Bright Trim	S	—	—
		Pewter-Tone Brushed Metal Finish and Bright Trim	—	S	S
	Instrument Panel Pad Applique	Black Crackle-Finish with Specific Nameplate	S	S	—
		Pewter-Tone Brushed Metal Finish with Specific Nameplate	—	—	S
STEERING WHEEL TRIM	Black Horn Button with Red GMC Lettering		S	S	—
	Black Horn Button with Red GMC Lettering and Bright Trim		—	—	S
<b>COMFORT/CONVENIENCE/PROTECTION</b>					
BUMPERS	Chromed Front		S	S	S
	Chromed Rear		A	A	A

TRIM LEVEL		SIERRA (STD)	HIGH SIERRA (Z62)	SIERRA CLASSIC (YE9)	
<b>COMFORT/CONVENIENCE/PROTECTION (cont'd)</b>					
BUMPERS (cont'd)	Chromed Rear Step-Type (Wideside only)		A	A	A
	Silver Painted Rear Step-Type		A	A	A
COAT HOOKS	One (2-Door Cab); Three (4-Door Cab)		S	S	S
FLOOR MATS	Color-Keyed Rubber; Front Only		—	—	A
GLASS	Clear Safety Glass All-Around		S	S	S
	Sliding Rear Window to Replace Fixed Rear Window		A	A	A
GRILLS	Tinted Safety Glass All-Around (except optional sliding rear window)		A	A	A
	Bright Door Edges		A	A	A
BUMPS	Chromed Front Bumper		A	A	A
	Chromed Rear Bumper		A	A	A
HEATING/COOLING	Air Conditioning, Outside Air Type		A	A	A
	Cold Climate Package (gasoline models)		A	A	A
	Flow-Through Power Ventilation		S	S	S
	Heater/Defogger, Heavy-Duty Ductless Air Type (diesel models)		A	A	A
HORN	Heater/Defogger, Outside Air Type		S	S	S
	Single Electric (Low-Note)		S	S	S
INSTRUMENT CLUSTER	Additional Electric (High-Note)		—	S	S
	Gage-Type		A	A	S
INSTRUMENT PANEL	Quartz-Type Electric Clock (requires gage-type cluster)		A	A	A
	Warning Light Type		S	S	—
	Central Tip-Out Ashtray		S	S	S
INTERIOR LAMPS	Cigarette Lighter with Ashtray Illumination		A	S	S
	Color-Keyed Energy-Absorbing Pad		S	S	S
	Right-Hand Storage Compartment with Latch		S	S	S
	Dome (includes door-operated switches for dome/map lights)		A	S	S
MIRRORS	Map (under instrument panel at center)		S	S	S
	Dual Chromed Exterior, Conventional Type		S	S	S
POWER DOOR LOCKS/WINDOWS	Dual Painted Exterior, Below-Eyeline Type		A	A	A
	Dual Painted Exterior, West Coast Type (C/K-3500 models)		A	A	A
	Dual Stainless Steel Exterior, Below-Eyeline Type		A	A	A
	Dual Stainless Steel Exterior, Camper Type		A	A	A
	Interior Rear View, Pivoting Type		S	S	S
	Interior Right-Hand View		—	—	S
	Available separately or together in Operating Convenience Package		A	A	A
	AM, AM/FM, AM/FM Stereo, and AM/FM Stereo with Cassette Tape		A	A	A
SEATS/SEAT BELTS	Windshield Antenna (included with optional radios)		A	A	A
	Folding Backrest with Inertia Latches	Front (2-Door Cab)	S	S	S
Rear (Crew Cab)		S	S	S	
SIDE RAILS	Full-Feature 3-Passenger Front Bench with Outboard Retractable Lap/Shoulder Belts and Manual Center Lap Belt		S	S	S
	Full-Feature 3-Passenger Rear Bench with Outboard Retractable Lap Belts and Manual Center Lap Belt (Crew Cab)		S	S	S
SPARE WHEEL/TIRE CARRIER	Chromed, Mounted atop Pickup Box Side Panels (Wideside only)		A	A	A
	Conventional Type, Frame-Mounted at Rear	C/K-1500	S	S	S
		C/K-2500/C-3500	(6)	(6)	(6)
STEERING WHEEL/COLUMN	Glide-Out Type, Frame-Mounted at Rear		A	A	A
	Side-Mounted Type, Inside of Pickup Box at Left (Wideside only)		A	A	A
	Black Energy-Absorbing Column with Air-Thrust Locking		S	S	S
SUNSHADES	Two-Spoke Soft Black Plastic Wheel, Combat II Type		A	A	A
	Two-Spoke Soft Black Plastic Wheel, Conventional Type		S	S	S
WINDSHIELD WIPERS/WASHERS	Color-Keyed Padded LH/RH		S	S	S
	Electric; Two-Speed Wipers; Wet-Arm Washers		S	S	S
Electric; Two-Speed Wipers with Intermittent Wiper Feature; Wet-Arm Washers		A	A	A	
<b>OTHER EQUIPMENT (See Data Book for details.)</b>					

S-Standard  
A-Available

1-Part of optional Deluxe Front Appearance Package  
2-Part of optional Custom Two-Tone or Exterior Decor Package for Wideside Pickups

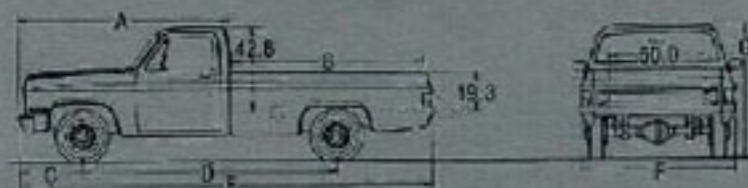
3-Includes bright side marker and tail lamp trim.  
4-Includes bright wheel opening moldings.  
5-Color-keyed rail substituted for diesel engine models.  
6-Included with available spare tire

## PAYLOAD SELECTION GUIDE

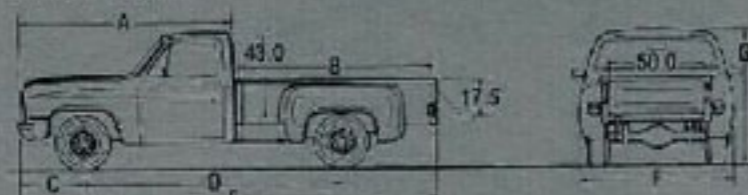
MODEL	SERIES	AVAILABLE ENGINE TYPE	GVW RANGE (LBS)	PAYLOAD RANGE (LBS)
CONVENTIONAL CAB PICKUP	C-1500/2500/3500	Gasoline	4900-10,000	1166-5234
		Diesel	5200-10,000	993-4843
BONUS/CREW CAB PICKUP	C-2500/3500	Gasoline	8600-10,000	3501-5057*
		Diesel		3352-4597*
CONVENTIONAL CAB CAB & CHASSIS	C-2500/3500	Gasoline	8600-10,500	4386-6175
		Diesel		4297-5767
BONUS/CREW CAB CAB & CHASSIS	C-3500	Gasoline	9000-10,500	4246-5796*
		Diesel		4097-5374*
BONUS/CREW CAB CAB & CHASSIS	K-3500	Gasoline	9200-11,000	3988-5782*
		Diesel		3851-5436*

\*Subtract 61 lbs from payload range for Crew Cab models. Payload includes weight of passengers, equipment, and cargo.

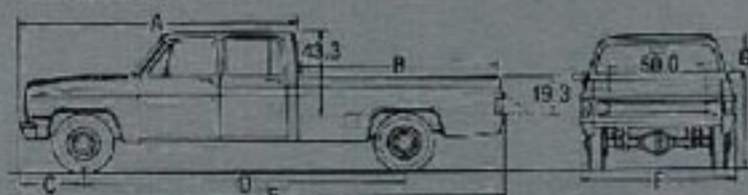
## PICKUP DIMENSIONS\*



WIDESIDE PICKUP



FENDERSIDE PICKUP



BONUS CAB

	A	B	C	D	E	F	G
<b>WIDESIDE</b>							
TC10703	109.3	78.2	33.8	117.5	191.9	79.6	69.8
TC10903	109.3	98.1	33.8	131.5	211.8	79.6	69.8
TC20903	109.3	98.1	33.8	131.5	211.8	79.6	71.6
TC20943	142.3	98.1	33.8	164.5	244.8	79.6	73.8
TC30903	109.3	98.1	33.8	131.5	211.8	79.6	73.0
TC30943	142.3	98.1	33.8	164.5	244.8	79.6	73.5
TK10703	109.3	78.2	33.8	117.5	192.6	79.6	73.0
TK10903	109.3	98.1	33.8	131.5	212.5	79.6	73.0
TK20903	109.3	98.1	33.8	131.5	212.5	79.6	73.6
TK30903	109.3	98.1	33.8	131.5	212.5	79.6	75.8
TK30943	142.3	98.1	33.8	164.5	244.8	79.6	76.2
<b>FENDERSIDE</b>							
TC10703	109.3	78.4	33.8	117.5	191.1	79.6	69.9
TC20903	109.3	98.3	33.8	131.5	211.0	79.6	71.6
TC30903	109.3	98.3	33.8	131.5	211.0	79.6	73.0
TK10703	109.3	78.4	33.8	117.5	191.7	79.6	73.0
TK20903	109.3	98.3	33.8	131.5	211.6	79.6	73.7

\*Inches. Dimension E is without rear bumper.

**IMPORTANT! A WORD ABOUT THIS CATALOG:** We have tried to make this catalog as comprehensive and factual as possible and we hope you find it helpful. However, since the time of printing, some of the information you'll find here may have been updated. Also, some of the equipment shown or described throughout this catalog is available as factory-installed options, as dealer accessories, and as specialized equipment from various independent suppliers at extra cost. Your dealer has details and, before ordering, you should ask him to bring you up to date.

The right is reserved to make changes at any time, without notice, in prices, colors, materials, equipment, specifications, and models. Check with your GMC Dealer for complete information.

**A WORD ABOUT ASSEMBLY, COMPONENTS, AND OPTIONAL EQUIPMENT IN THESE GMC PRODUCTS:** The GMC Trucks described in this catalog are assembled at facilities operated by General Motors or GM of Canada. These vehicles incorporate thousands of different components produced by car and truck groups and various component divisions of GM and by various suppliers to General Motors. From time to time during the manufacturing process, it may be necessary, in order to meet public demand for particular vehicles or equipment, or to meet federally mandated emissions, safety, and fuel economy requirements, or for other reasons, to produce GMC products with different components or differently sourced components than initially scheduled. All such components have been approved for use in GMC products and will provide the quality performance associated with the GMC name.

With respect to extra-cost optional equipment, make certain you specify the type of equipment you desire on your vehicle when ordering it from your dealer. Some options may be unavailable when your truck is built. Your dealer receives advice regarding the current availability of options. You may ask the dealer for this information. GM also requests the dealer to advise you if an option you ordered is unavailable. We suggest that you verify that your truck includes the optional equipment you ordered, or, if there are changes, that they are acceptable to you.

These vehicles also are available under the Chevrolet nameplate (Chevrolet Pickup Series C/K 10-20-30 and Chassis-Cab Series C20-30 and K30).

**A WORD ABOUT UPDATED SERVICE INFORMATION:** GMC Truck and Coach Operation regularly sends its dealers useful service bulletins about GMC Truck products. GMC Truck and Coach Operation monitors product performance in the field. We then prepare bulletins for servicing our products better. Now you can get these bulletins, too. Ask your dealer. To get ordering information, call toll free 1-800-551-4123.

# TECHNICAL INFORMATION (Powertrains, see page 17)

PICKUP MODEL TYPE		2-WHEEL DRIVE			
SERIES		C-1500	C-2500	C-2500	C-3500
GVW RATING (lb)	Standard	4900 (3)	6400	8600 (1)	9000
	Maximum	6100	7200	—	10,000
ENGINES/TRANSMISSIONS		(see Powertrains chart on Page 17)			
FRONT SUSPENSION		independent, coil springs			
Capacity (lb)		2950 (3)	3800	3800	3800 (4)
Spring capacity (lb) (5)	Standard	1475 (3)	1750	1900	1900 (4)
	Optional	(6)	1900	—	—
Shock absorber diameter (mm)	Standard	25	25	32	32
	Optional	32	32	—	—
Stabilizer bar diameter (in)	Standard	—	—	1.06	—
	Optional	1.06	1.06/1.25	1.25	1.06/1.25
REAR SUSPENSION		salisbury axle, leaf springs			
Axle capacity (lb)		3750	5700	6000 (4)	7500
Spring capacity (lb) (5)	Standard	1550	2000	3000	3500
	Optional	1750, 2000	2600, 3000	—	3750
Shock absorber diameter (mm)	Standard	25	25	32	32
	Optional	32	32	—	—
BRAKES		hydraulic, disc/drum			
Standard booster	Gasoline models	vac (8)	vac	vac	hyd
	Diesel models	hydraulic			
Parking		cable to rear wheels			
STEERING	Gasoline models	std: manual; opt: power			
	Diesel models	std: power			
TIRES		various types/sizes			
Standard (radial ply)		P195/ 75R15 (3)	LT215/ 85R16C	LT235/ 85R16D/E	LT235/ 85R16D/E
Optional		consult your GMC Dealer for details			
FUEL TANK CAPACITY (gal)		16 (9), 20	20	20	20
Standard single					
	Optional dual (each)	Gas models	16	16	20
	Diesel models	16 (9), 20	20	20	20
BATTERY		12-volt, maintenance-free			
CCA rating	Gasoline models	std: 405 (500 with 4.3L V6); opt: 515			
	Diesel models	std: dual 550			
GENERATOR		12-volt, alternating current			
Amp rating	Gasoline models	std: 37; opt: 66			
	Diesel models	std: 66			

PICKUP MODEL TYPE		4-WHEEL DRIVE			
SERIES		K-1500	K-2500 (2)	K-2500/C6P	K-3500
GVW RATING (lb)	Standard	6100	6600	8600	9200
	Maximum	—	—	—	10,000
ENGINES/TRANSMISSIONS		(see Powertrains chart on Page 17)			
FRONT SUSPENSION		salisbury axle, leaf springs			
Capacity (lb)		3500	3800	3800	4500
Spring capacity (lb) (5)	Standard	1850	1850	1850	2250
	Optional	2250 (7)	2250	2250	—
Shock absorber diameter (mm)	Standard	25	25	32	32
	Optional	32	32	—	—
Stabilizer bar diameter (in)	Standard	1.25	1.25	1.25	1.25
	Optional	—	—	—	—
REAR SUSPENSION		salisbury axle, leaf springs			
Axle capacity (lb)		3750	5700	6000	7500
Spring capacity (lb) (5)	Standard	1875	2000	3000	3500
	Optional	—	—	—	3750
Shock absorber diameter (mm)	Standard	25	25	32	32
	Optional	32	32	—	—
BRAKES		hydraulic, disc/drum			
Standard booster	Gasoline models	vac	vac	vac	hyd
	Diesel models	hydraulic			
Parking		cable to rear wheels			
STEERING	Gasoline models	std: power			
	Diesel models	std: power			
TIRES		various types/sizes			
Standard (radial ply)		P235/ 75R15	LT215/ 85R16C	LT235/ 85R16D/E	LT235/ 85R16D/E
Optional		consult your GMC Dealer for details			
FUEL TANK CAPACITY (gal)		16 (9), 20	20	20	20
Standard single					
	Optional dual (each)	Gas models	16	16	20
	Diesel models	16 (9), 20	20	20	20
BATTERY		12-volt, maintenance-free			
CCA rating	Gasoline models	std: 405 (500 with 4.3L V6); opt: 515			
	Diesel models	std: dual 550			
GENERATOR		12-volt, alternating current			
Amp rating	Gasoline models	std: 37 (66 for K-3500); opt: 66			
	Diesel models	std: 66			

CCA - Cold Cranking Amps  
1 - Requires C6P on 2-door cab models.  
2 - Not available in California.

3 - Varies for diesel models. Consult your GMC Dealer.  
4 - Varies for 4-door cab models. Consult your GMC Dealer.  
5 - At ground, each.

6 - 1625/1700 lbs; for gas models only.  
7 - Recommended for snowplow usage only.  
8 - Manual brakes at 4900-lb GVWR; vacuum power brakes available.  
9 - 117.5" wheelbase models only.

## EXTERIOR COLORS

NOTE: For accurate colors, ask your GMC Dealer to show you actual paint chips and fabric swatches.



Frost White    Silver (M)    Midnight Black    Light Blue (M)    Midnight Blue    Colonial Yellow    Doeskin Tan    Desert Sand (M)    Indian Bronze (M)    Apple Red

Special bodies are supplied to GMC Dealers by outside suppliers, independently of GMC, which is not responsible for the safety or design features, materials or workmanship of any alteration by any such supplier.

**GMC**  
**TRUCKS**  
GENERAL MOTORS CORPORATION  
TRUCK & BUS GROUP

Let's Get It Together...Buckle Up.

Every new 1985 GMC Light Duty truck delivered by a GMC Truck Dealer in the United States comes with a one-year, \$10,000 seat belt insurance certificate from MIC General Insurance Corporation at no additional charge. \$10,000 will be paid to the estate of any occupant who suffers fatal injuries as a result of an accident involving that vehicle while wearing a GM seat belt. Buckle up every time you drive.



MARK OF EXCELLENCE