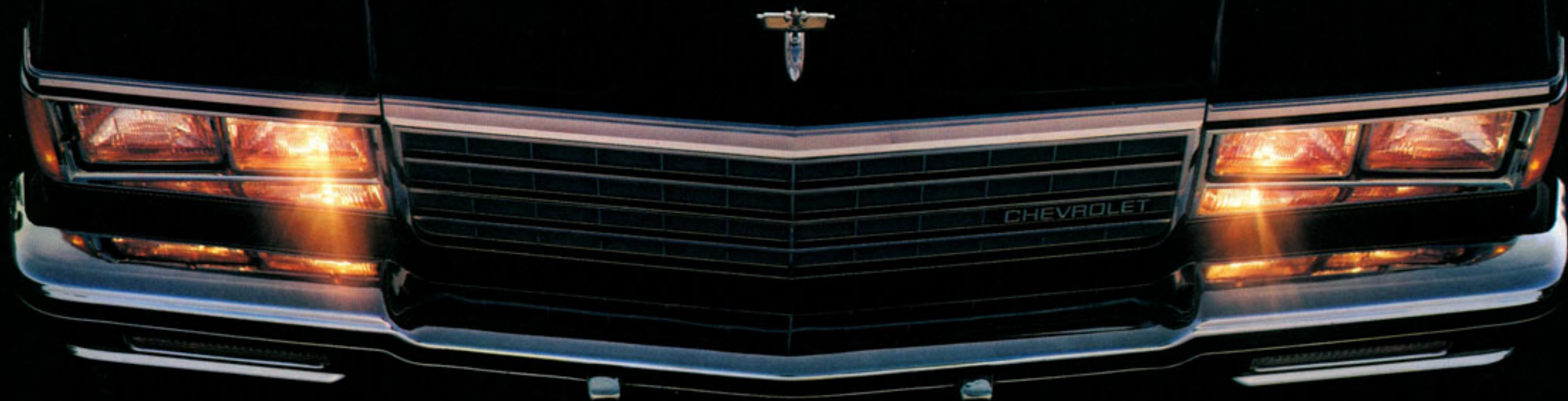


1983 CHEVROLET CAPRICE CLASSIC AND IMPALA 



Room, ride and value have helped make the full-size Chevrolets the most popular cars of their kind in the world.

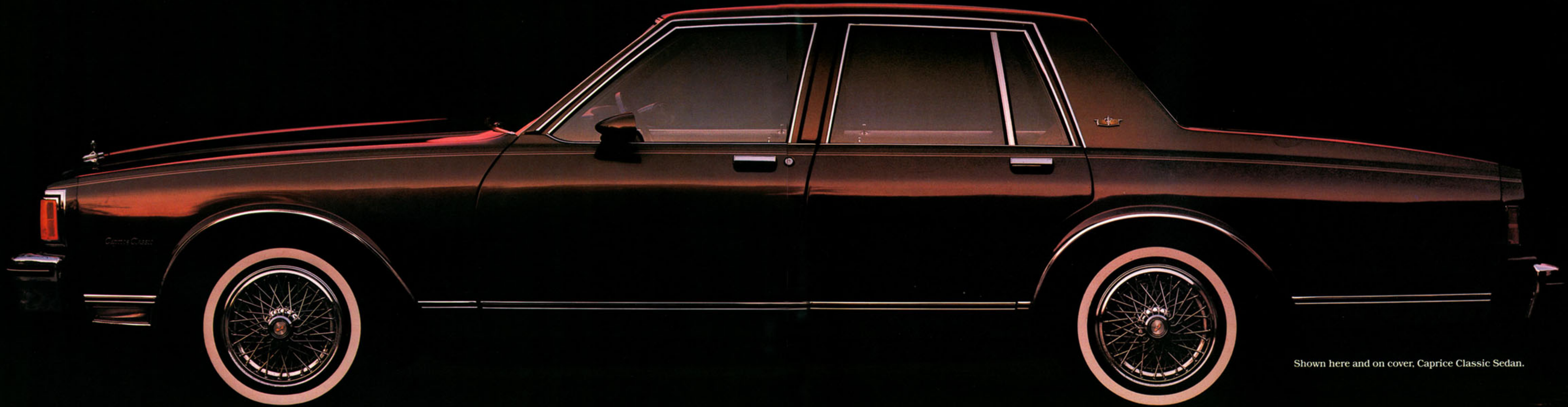
And qualities like elegance, comfort and classic styling have helped establish Caprice Classic as the hallmark among full-size cars.

Caprice Classic continues to be a car of substance — it's also ready to face today's driving realities. It's aerodynamic. It's tech-

nically sophisticated, with an on-board computer to help fine-tune a responsive V6 engine. It offers optional V8 gas or diesel power, too.

And an optional automatic transmission with overdrive (standard V8 gas Wagon). We invite you to compare. We don't think you can find a

better value for your driving pleasure. Feature for feature. Comfort for comfort. Dollar for dollar. You can spend more, but why?



Shown here and on cover, Caprice Classic Sedan.

Important: A word about this catalog. We have tried to make this catalog as comprehensive and factual as possible. However, since the time of printing, some of the information may have been updated. Also, some of the equipment shown or described throughout this catalog is available at extra

cost. Your dealer has details and, before ordering, you should ask him to bring you-up to date. The right is reserved to make changes at any time, without notice, in prices, colors, materials, equipment, specifications and models. Check with your Chevrolet dealer for complete information.

The elegant Caprice Classic Sedan CL Special Custom Interior with individual front armrests and a passenger-side recliner. Its tailored look is complemented by a soft knit luxury fabric. There's comfort and quiet for up to six.



Behind the wheel you look over instruments that are conveniently located, easy to read, easy to reach.



Caprice Classic instrument panel.

The Caprice Classic Station Wagon features unexpected comfort and luxury. Like the Caprice Sedan, there's a smooth, hushed ride

thanks to Full Coil suspension and the acoustical components of the Quiet Sound Group. A 50/50 split front seat with passenger

recliner is available. There's a standard quartz clock to keep time. But make no mistake about it, the Caprice Classic also has a

full measure of station wagon features: The loading and unloading convenience of a power tailgate window and a three-way door-gate.

The security of lockable storage compartments. The ability to carry 87.9 cubic feet of cargo—or you can have seating for up to

eight passengers with the standard third seat. That's only part of the story. The 1983 Chevrolet Wagon catalog has full details.



Caprice Classic Station Wagon standard vinyl seating.

Impala is Chevrolet's full-size value leader. Like the Caprice Classic, it has a long list of standard features. The Impala comes with

automatic transmission, Computer Command Control with 3.8 Liter V6 engine, power steering, power front disc brakes,

Easy-Roll steel-belted radial ply tires, color-keyed cut-pile carpeting, extensive anti-corrosion measures and much more built-in

Chevrolet value. Inside, there's room for six adults to stretch out in full-foam cushion comfort. And a trunk able to hold almost 21

cubic feet of vacation needs. There's a wide choice of options. If you plan to tow on your trip, your Impala can be equipped for trailering.

See your dealer for details. Chevrolet Impala. For over 25 years, it's been making a lot of sense for a lot of Americans.



Impala standard cloth seating.

STANDARDS

Color and Trim Combinations

Interior Colors

		Dk Blue	Fern	Sand Gray	Dk Brown	Maroon
Caprice Classic Sedan Standard front bench seat	Cloth (Standard)	■	■	■	■	■
	Vinyl (Optional)	■	■	■	■	■
Optional 50/50 split front seat w/passenger recliner	Cloth	■	■	■	■	■
Optional CL Special Custom Interior with 50/50 split front seat and passenger recliner	Special Custom Cloth	■	■	■	■	■
		■	■	■	■	■
Caprice Classic Wagon Standard front bench seat	Vinyl (Standard)	■	■	■	■	■
	Cloth (Optional)	■	■	■	■	■
Optional 50/50 split front seat w/passenger recliner	Cloth	■	■	■	■	■
Impala Sedan Standard front bench seat	Cloth (Standard)	■	■	■	■	■
	Vinyl (Optional)	■	■	■	■	■

Exterior Colors

White	■	■	■	■	■	■
Silver (Metallic)	■	■	■	■	■	■
Black	■	■	■	■	■	■
Light Blue (Metallic)	■	■	■	■	■	■
Dark Blue (Metallic)	■	■	■	■	■	■
Light Fern (Metallic)*	■	■	■	■	■	■
Dark Fern (Metallic)*	■	■	■	■	■	■
Light Brown (Metallic)*	■	■	■	■	■	■
Dark Brown (Metallic)*	■	■	■	■	■	■
Maroon (Metallic)	■	■	■	■	■	■

Optional Custom Two-Tone Colors

White/Silver (Metallic)	■	■	■	■	■	■
Light Blue (Metallic)/Dark Blue (Metallic)	■	■	■	■	■	■
Light Fern (Metallic)/Dark Fern (Metallic)*	■	■	■	■	■	■
Light Brown (Metallic)/Dark Brown (Metallic)*	■	■	■	■	■	■

Vinyl roof colors: White, Dark Brown* Dark Blue, Maroon, Light Fern* Sand Gray.

*Not available on Impala.

A few of the many standard features that make full-size Chevrolet ownership more enjoyable and rewarding for years to come are shown here. On the back cover you'll find a detailed listing.

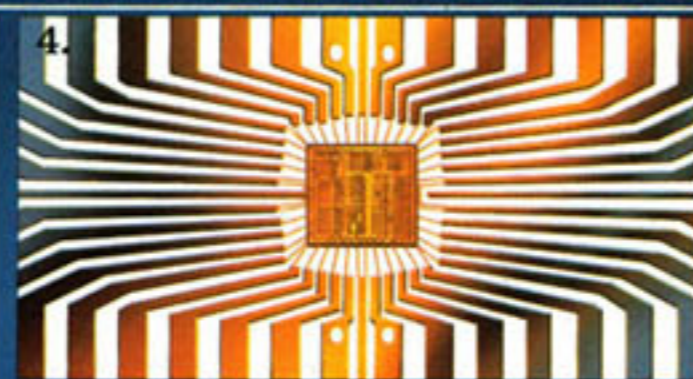
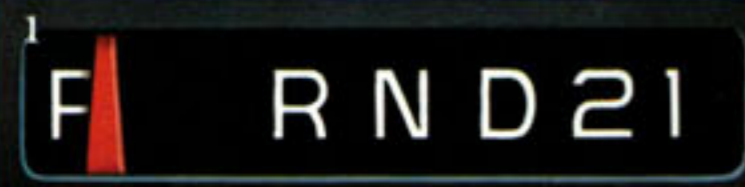
1. Automatic transmission because you deserve it.

2. Power steering for an easy yet reassuring touch with the road.

3. Power front disc/rear drum brake system for smooth, steady stopping.

4. Computer Command Control continuously monitors gasoline engine functions.

5. 20.9 cu. ft. of family-size trunk room.

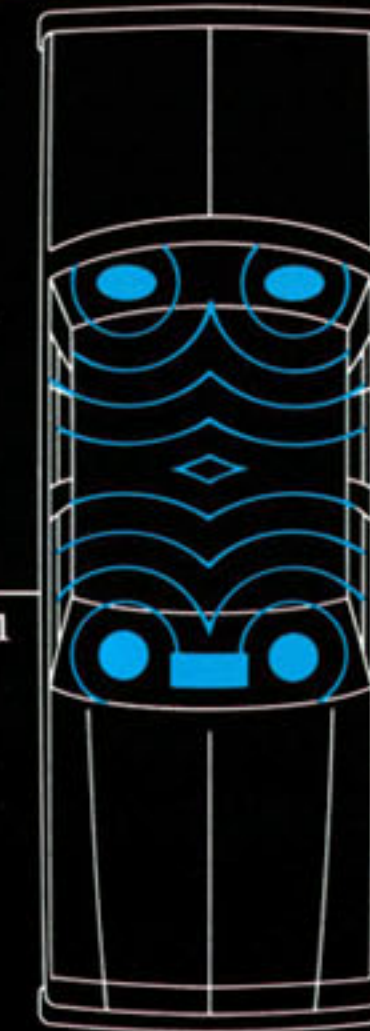


OPTIONS

Shown here are some options that can satisfy your personal tastes and needs. They can also be an added value at trade-in time. Look these over. On the back cover there is a detailed list.

1. Air conditioning/GM-Delco AM/FM stereo sound system.
2. Automatic speed control with resume speed.

3. Electric rear window defogger.
4. Caprice Classic Sedan shown with Custom Two-Tone Light Fern/Dark Fern, cornering lamps, Sport mirrors, tinted glass, bumper guards, bumper rub strips, body side moldings, sport wheel covers, white-stripe tires and power antenna.



A word about assembly, components and optional equipment in these Chevrolets.

The Chevrolets described in this catalog are assembled at facilities of General Motors Corporation operated by the GM Assembly Division or GM of Canada. These vehicles incorporate thousands of different components produced by various divisions of General Motors and by various suppliers to General Motors. From time to time during the manufacturing process, it may be necessary, in order to meet public demand for particular vehicles or equipment, or to meet federally mandated emissions, safety and fuel economy requirements, or for other reasons, to produce Chevrolet products with different components or differently sourced components than initially scheduled. All such components have been approved for use in Chevrolet products and will provide the quality performance associated with the Chevrolet name.

With respect to extra-cost optional equipment, make certain you specify the type of equipment you desire on your vehicle when ordering it from your dealer. Some options may be unavailable when your car is built. Your dealer receives advice regarding current availability of options. You may ask the dealer for this information. GM also requests the dealer to advise you if an option you ordered is unavailable. We suggest that you verify that your car includes optional equipment you ordered or, if there are changes, that they are acceptable to you.

A word about engines. Some Chevrolets are equipped with engines produced by other GM divisions, subsidiaries, or affiliated companies worldwide. See your dealer for details.

CAPRICE CLASSIC AND IMPALA FACTS



Exterior Features	Caprice Classic		Impala
	Sedan	Wagon	Sedan
Bright window moldings	S	S	S
Concealed dual-speed electric windshield wipers	S	S	S
Corrosion Protection:			
• Anti-chip protective coating applied to lower body	S	S	S
• Seven-stage zinc phosphate anti-corrosion process	S	S	S
• Hot-melt-wax submersion of entire frame	S	S	S
• Liberal use of precoated steels and zinc-rich primers	S	S	S
Double-panel door, hood, decklid or tailgate construction	S	S	S
Fluidic windshield washer system	S	S	S
Full wheel covers	S	S	O
Wheel opening moldings	S	S	O*

Interior Features	Caprice Classic		Impala
	Sedan	Wagon	Sedan
Color-keyed seat and shoulder belts	S	S	S
Color-keyed steering wheel, column, and instrument panel	S	S	S
Full-width front bench seat	S	S	S
Glove box light	S	S	S
Headlamp-on reminder, ashtray, courtesy lights	S	S	O+
Hinged panel in cargo floor for concealed stowage	NA	S	NA
Lockable side compartment	NA	S	NA
Luggage compartment light	S	NA	S
Power tailgate window	NA	S	NA
Quartz electric clock	S	S	O
Quiet Sound Group	S	S	O
Recessed stowage pockets in cargo area trim panels	NA	S	NA

Mechanical Features	Caprice Classic		Impala
	Sedan	Wagon	Sedan
Power steering	S	S	S
Power disc/rear drum brake system	S	S	S
Computer Command Control (except diesel)	S	S	S
Front stabilizer bar	S	S	S
Full Coil suspension system	S	S	S
Steel-belted radial ply tires	S	S	S

S: Standard. O: Optional. NA: Not Available.
 *Available only with Value Appearance Group.
 †Available only with auxiliary lighting.

Dimensions (in.)	Caprice Classic		Impala
	Sedans	Wagon	Sedan
Wheelbase	116.0	116.0	
Length (overall)	212.2	215.1	
Width (overall)	75.3	79.3	
Height (loaded)	56.4	58.1	

Dimensions (in.)	Caprice Classic		Impala
	Sedans	Wagon	Sedan
Head Room - Front	39.2/39.5†	39.6	
Head Room - Rear	38.0/38.2†	39.3	
Leg Room - Front	42.2	42.2	
Leg Room - Rear	39.1	37.8	
Hip Room - Front	55.0	55.1	
Hip Room - Rear	55.3	55.0	
Shoulder Room - Front	60.9/60.5†	60.9	
Shoulder Room - Rear	60.9/60.5†	60.9	
Luggage/Cargo Capacity (cu. ft.)	20.9	87.9	
Fuel Tank Capacity (gals.)	25.0*	22.0	

*26.0 gals. with diesel engine. †Impala.

Power Teams

Engines	Ordering Code	Engine Availability	Transmissions	
			Auto-matic	Automatic w/Overdrive
3.8 Liter 2-Bbl. V6 ¹ (A)	LC3	S	S	NA
3.8 Liter 2-Bbl. V6 ² (B)	LD5	S	S	NA
5.0 Liter 4-Bbl. V8 ³ (C)	LG4	O	NA	O ³
5.7 Liter Diesel V8 (D)	LF9	O	S	O

(A) Produced by GM-Chevrolet Motor Division.
 (B) Produced by GM-Buick Motor Division.
 (C) Produced by GM-Chevrolet Motor Division or GM of Canada.
 (D) Produced by GM-Oldsmobile Motor Division.
¹NA Wagon or California. ²California only, NA Wagon.
³Standard on Wagon.
 S: Standard. O: Optional. NA: Not Available.

Service Intervals

Engine Oil: 12 months or 7,500 miles** ■ Oil Filter: 12 months or 7,500 miles; every 15,000 miles thereafter** ■ Spark Plugs†: Up to 30,000 miles ■ Chassis Lubrication: 12 months or 7,500 miles ■ Automatic Transmission Fluid Change: Every 100,000 miles.
 **5,000 miles with diesel.
 †Except diesel.

See Owner's Manual for conditions requiring more frequent intervals.

Options

Appearance and Protection

■ Body pin striping (not available with Custom Two-Tone or Estate Equipment) ■ Bumper guards ■ Bumper rub strips ■ Cornering lamps ■ Deluxe luggage compartment trim (Sedans) ■ Estate Equipment (Wagon) ■ Floor covering: Carpeting, Deluxe load floor (Wagon); Deluxe cargo area carpeting (Wagon); Color-keyed floor mats, front and/or rear ■ Halogen hi-beam headlamps ■ Mirrors: Left-hand remote control; Left-hand and right-hand remote control; Sport twin remote; Sport left-hand remote and right-hand manual ■ Moldings: Body side, Door edge guards (not available with Estate Equipment) ■ Paint: Custom Two-Tone ■ Tinted glass ■ Value Appearance Group: includes full wheel covers, body side and wheel opening moldings (Impala) ■ Vinyl roof cover (Sedans).

Comfort and Convenience

■ Air conditioning ■ Automatic speed control with resume speed ■ Auxiliary lighting ■ Comfortilt steering wheel ■ Digital clock ■ Quartz electric clock (Impala) ■ Electric rear window defogger ■ Gage Package with trip odometer ■ Illuminated RH visor mirror ■ Intermittent windshield wiper system ■ Power door lock system

■ Power tailgate lock (Wagon) ■ Power trunk opener (Sedans) ■ Power windows ■ Quiet Sound Group (standard on Caprice, required with diesel on Impala) ■ Roof carrier (Wagon. Includes adjustable front and rear rails and integral air deflector) ■ Seat equipment: 50/50 front seat with passenger recliner (Caprice); Six-way power seat (driver's side only with 50/50).

Performance

■ Cold Climate Package (diesel) ■ Heavy-duty battery ■ Heavy-duty cooling ■ High-altitude axle ratio ■ Limited slip differential ■ Performance axle ratio (Sedans, NA diesel) ■ Suspension equipment: Inflatable rear shock absorbers (Wagon only); Heavy-duty front and rear suspension; F41 Sport Suspension (Sedans).

Audio Equipment

GM-Delco radio equipment: (All radios include dual front speakers; all stereos include dual rear speakers.) ■ AM radio ■ AM/FM radio ■ AM/FM stereo radio ■ AM/FM stereo radio w/stereo cassette tape ■ Power antenna (not available with windshield antenna) ■ Windshield antenna ■ Dual rear speakers (monaural radios).

Tires and Wheels

■ P225/70R-15 steel-belted radial ply white-stripe (Sedans. Required with F41 Sport Suspension) ■ P205/75R-15 steel-belted radial ply white-stripe (Sedans) ■ P225/75R-15 steel-belted radial ply white-stripe (Wagon) ■ Puncture-sealant tires (white-stripe only).

Wheel Equipment:

■ Full wheel covers (Impala) ■ Sport wheel covers ■ Wheel cover locking package (wire wheel covers) ■ Wire wheel covers (Caprice).

Continuous Protection Plan

The GM Continuous Protection Plan offers service protection in addition to that provided by GM's new-vehicle limited warranty. Ask your dealer about it. Coverage available only in the U.S.A. and Canada.

Safety Features

Occupant Protection

Manual lap/shoulder belts with push-button buckles for driver and right front passenger (driver's side includes visual and audible warning system); manual lap belt at center position ■ Manual lap belts with push-button buckles at rear passenger positions including center ■ Energy-absorbing steering column ■ Passenger-guard inside door locks ■ High-strength safety door latches and hinges ■ Energy-absorbing instrument panel and front seat-back tops ■ Laminated safety glass windshield/tempered safety glass side and rear windows ■ Safety armrests ■ Standardized identification symbols for controls and displays ■ Front seat head restraints for driver and right front passenger (adjustable).

Accident Avoidance

Side marker lights and reflectors ■ Parking lamps that illuminate with headlamps ■ Four-way hazard warning flasher ■ Backup lights ■ Lane-change feature in direction signal control ■ Windshield defrosters, washer and dual-speed wipers ■ Vinyl-bonded inside mirror glass ■ Outside left rearview mirror ■ Dual master cylinder brake system with warning light ■ Starter safety switch ■ Dual-action safety hood latch.

Anti-Theft

Audible anti-theft ignition key reminder ■ Anti-theft steering column lock ■ Inside hood release.

LET'S GET IT TOGETHER... BUCKLE UP.

USA-1 IS TAKING CHARGE

CHEVROLET

Caprice/Impala • Camaro • Cavalier • Celebrity • Chevette • Citation • Corvette • Malibu • Monte Carlo