

Chevy  
makes  
good things  
happen...

1982

Celebrity  
Camaro  
Cavalier  
Chevette  
Citation  
Corvette  
Malibu Classic  
Monte Carlo  
Caprice Classic  
Impala  
Wagons

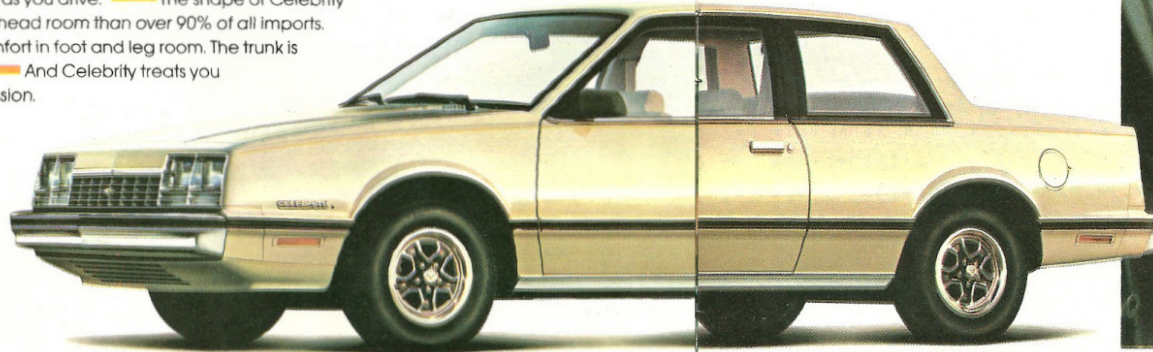
for you!

 Chevrolet

# Celebrity

CHEVROLET MAKES EXCITING THINGS HAPPEN  
WITH A BRIGHT NEW SHAPE FOR THE '80s. 1982 CELEBRITY.

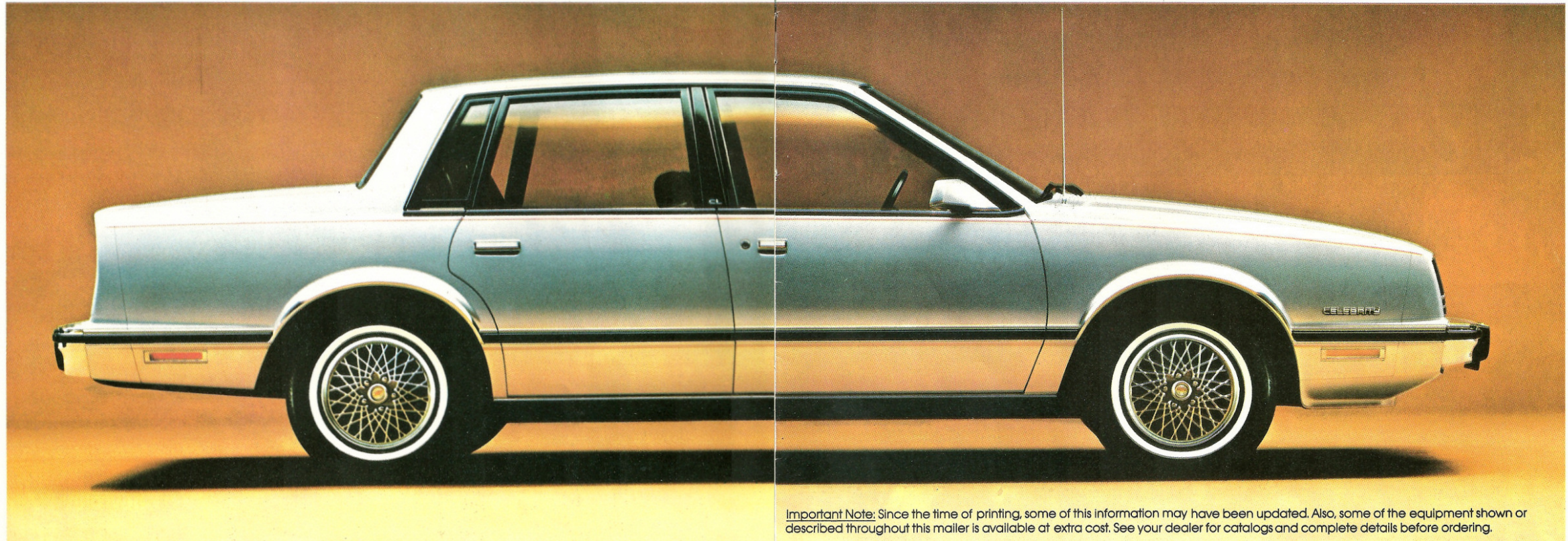
More than a brand-new car. It's the bright new shape of Chevrolet...with the new shape of technology. Technological advancements include on-center steering for a driving feel that's true and responsive. A sophisticated, on-board computer system for gasoline-powered models—so sensitive it actually adjusts for changes in the air around you and constantly fine-tunes the engine under normal operating conditions as you drive. The shape of Celebrity gives you full five-passenger room. Better front seat head room than over 90% of all imports. The relatively flat floor in back gives unexpected comfort in foot and leg room. The trunk is roomy enough for a family's needs. And Celebrity treats you to a host of standard features. Automatic transmission. Power rack-and-pinion steering. Power front disc/rear drum brakes. Front-wheel drive. MacPherson-strut front suspension. Comfort and convenience features like side window defoggers. And much more. The bright new shape of Chevrolet is Celebrity. In sedan and coupe models. For many, it's the next generation of the full-size car.



Celebrity 2-Door Coupe



Celebrity CL Special Custom Cloth interior with 45/45 front seat, console and armrest



2 Celebrity 4-Door Sedan

**Important Note:** Since the time of printing, some of this information may have been updated. Also, some of the equipment shown or described throughout this mailer is available at extra cost. See your dealer for catalogs and complete details before ordering.

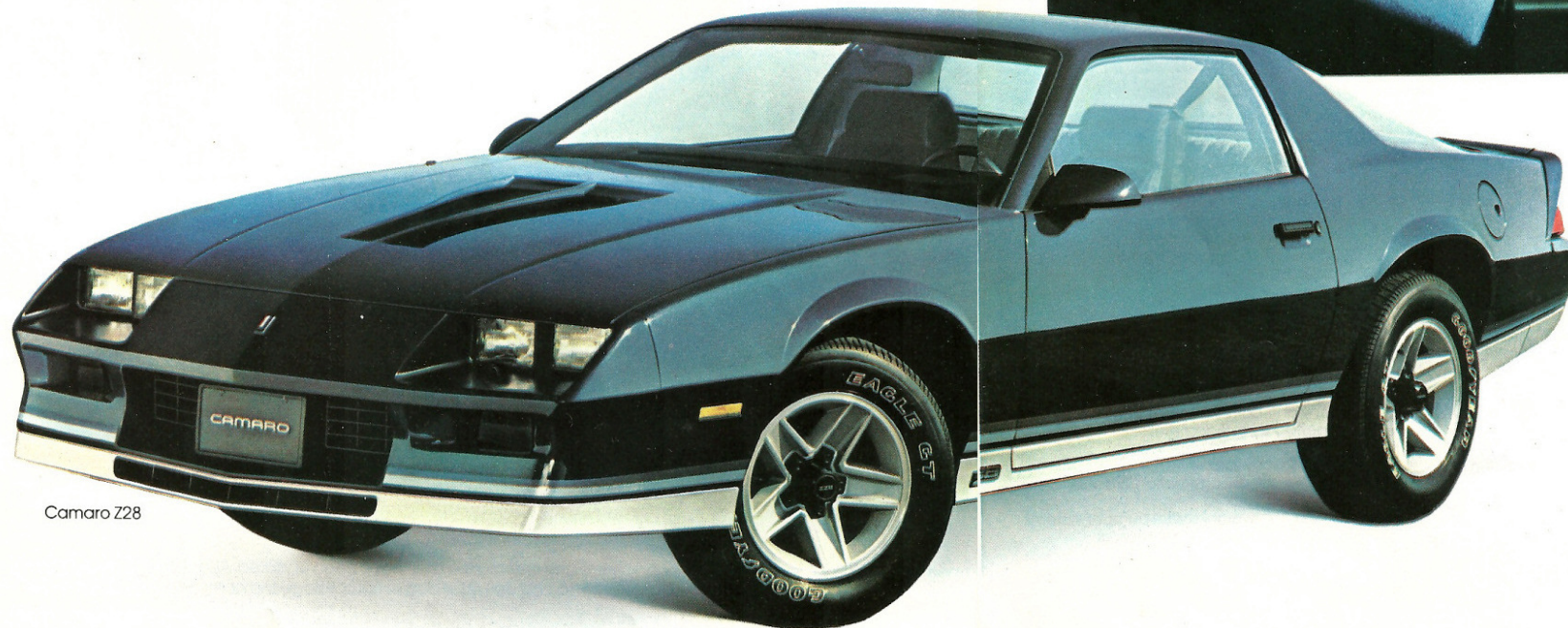
# Camaro

CHEVY MAKES MOVES THAT WILL  
CAPTURE YOUR IMAGINATION. 1982 CAMARO.

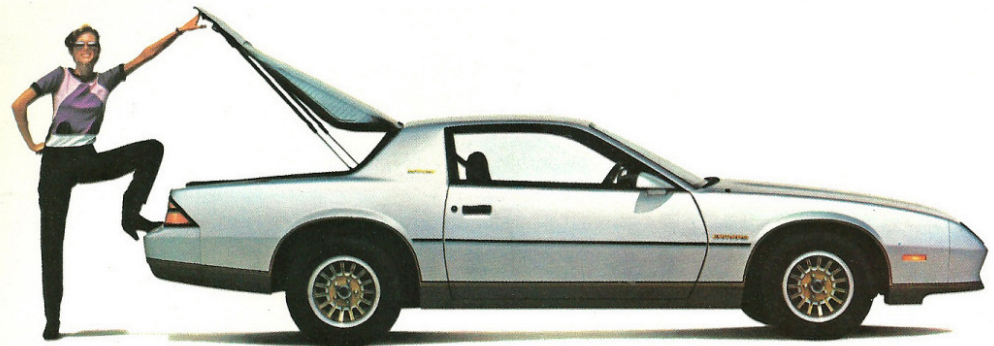
Camaro's new low-slung, wedge-shaped silhouette suggests motion even when standing still. With a windshield raked back at 62°, the new Camaro's aerodynamic body knifes through the air to reduce wind resistance. In fact, the aerodynamic rating of the '82 Camaro is among the best of any production car tested in the GM wind tunnel facility. From Camaro's cockpit, the driver presides over a bank of instruments placed for easy reading from any driving position. A sculptured glass hatchback with steel closure panel provides quick, easy access to the expanded cargo area—space that can be increased simply by folding down the new rear seat. Base engines include a new electronically fuel-injected four for the Sport Coupe, the proven 2.8 Liter V6 for Berlinetta and a 5 Liter V8 for Z28. The affordable Sport Coupe. The luxurious Berlinetta. The performance-oriented Z28. Whichever new Camaro you choose, you'll like the way it looks, the way it moves.



Camaro Sport Coupe



Camaro Z28



Camaro Berlinetta



Berlinetta cloth seats

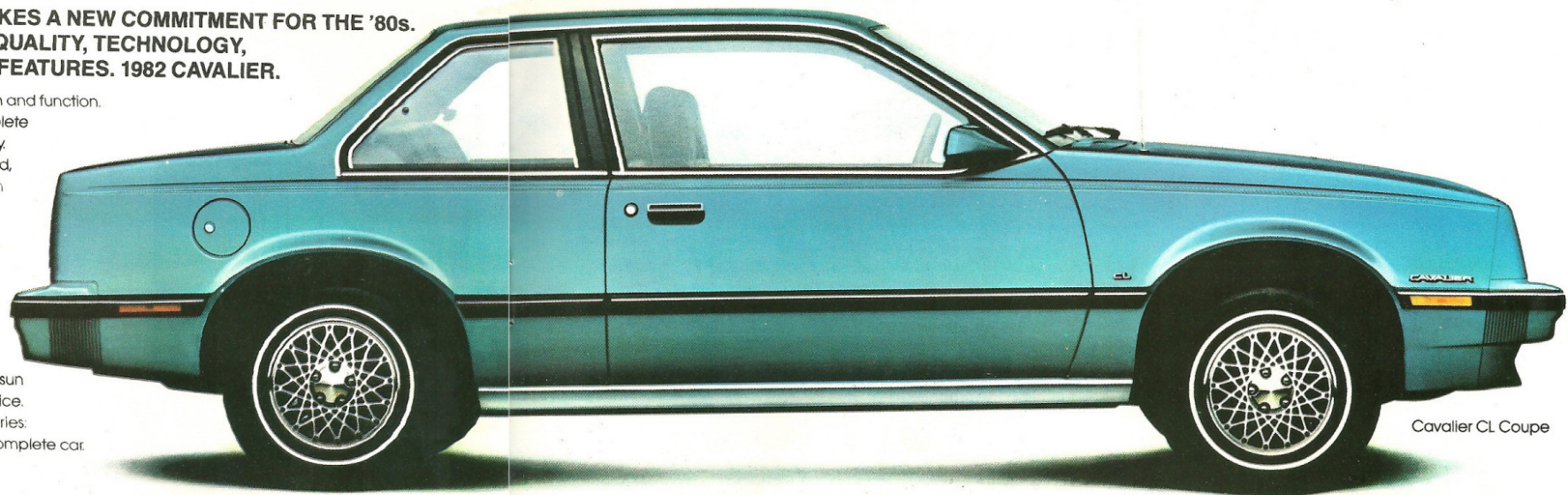


Optional Z28 L/S Contour driver's bucket seat

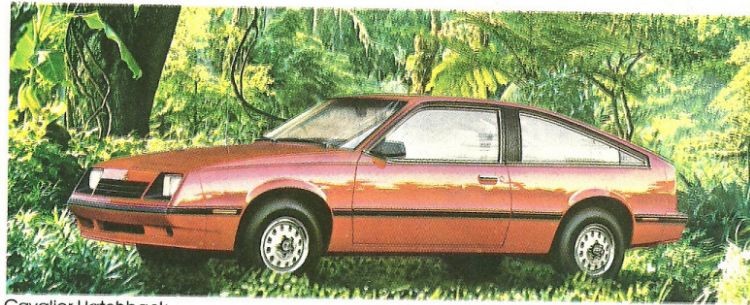
# Cavalier

CHEVY MAKES A NEW COMMITMENT FOR THE '80s.  
COMPLETE IN QUALITY, TECHNOLOGY,  
STANDARD FEATURES. 1982 CAVALIER.

Welcome to a new era in automotive design and function. The 1982 Chevy Cavalier. The complete car. Complete in quality. Laser beams measure body fit. Robots inspect for weld integrity. X rays scan interior construction to assure alignment of interior parts. And, quality checks at the factory total more than 1,000. Complete in technology. Cavalier incorporates some of the most advanced engineering of our times. With innovations in front-wheel drive and aerodynamic design. It also has a new 1.8 Liter high-compression engine that actually delivers more horsepower per liter than some highly regarded V8s. Yet, Cavalier requires less horsepower to cruise at 50 MPH than most other production cars on the road today. Complete in comfort. Cavalier's 101-inch wheelbase not only results in a smooth ride, but in an interior with more passenger room and luggage area than Datsun 210, Toyota Corolla or Honda Accord models. Complete in choice. Cavalier's model lineup is varied and exciting. With four models in two series: Cavalier and Cavalier CL, the custom luxury version of the complete car.



Cavalier CL Coupe



Cavalier Hatchback



Cavalier 4-Door Sedan



Cavalier Wagon

### Complete with 43 standard features.

1. Front-wheel drive.
2. 1.8 Liter 4-cylinder transverse engine.
3. 4-speed manual overdrive transmission.
4. Power-assisted front disc/rear drum brakes.
5. Glass-belted radial tires.
6. Computer Command Control.
7. Quick rack-and-pinion steering.
8. MacPherson-strut front suspension.
9. Push-button AM radio with dual front speakers.\*
10. Quartz digital clock (integral with radio).
11. Front stabilizer bar.
12. Freedom II maintenance-free battery.
13. Large-capacity (14-gallon) fuel tank.
14. Day/night inside rearview mirror.
15. Side window defoggers.
16. Electric rear window defogger.
17. Tri-color, segmented tail lamps with amber turn signals (except Wagon).
18. Flow-thru power ventilation system.
19. Locking gas filler door with cap holder.
20. Substantial acoustical insulation.
21. Accessible in-dash flip-down fuse panel.
22. Remote trunk/hatchback/tailgate release.
23. Body-side moldings.
24. Styled steel Rally wheels.
25. Bumper rub strips.
26. Reclining contoured front seats.
27. Assist grip above each passenger door.
28. Console with rear ashtray and coin holder.
29. Plastisol lower body stone-chip protection.
30. Color-keyed seat and shoulder belts.
31. Color-keyed carpeting.
32. Extended front seat track.
33. Column-mounted "Smart Switch."
34. Cigarette lighter and ashtray lamp.
35. Glove compartment lock.
36. Styled outside rearview mirror.
37. Many anti-corrosion-treatment areas.
38. Resettable trip odometer.
39. Passenger-guard door locks.
40. Side-lift body jack.
41. Double-panel construction in doors, hood and trunk lid.
42. Strong, lightweight metal bumper systems.
43. Audible disc brake wear sensors.

\*May be deleted for credit.



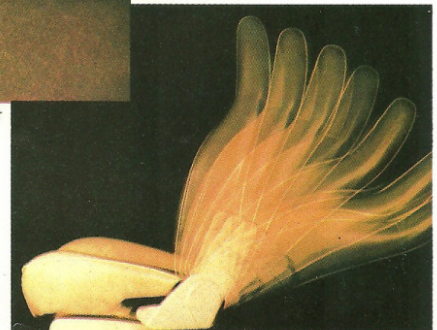
Cavalier CL seat

### AND YOU GET 15 MORE STANDARD FEATURES WITH THE CAVALIER CL.

1. Power steering.
2. Rear stabilizer bar.
3. Intermittent windshield wiper system.
4. Sport mirrors, left-hand remote control and right-hand manual.
5. Tinted glass.
6. Halogen headlamps.
7. CL exterior appearance group.
8. Styled Sport wheel covers.
9. Custom interior.
10. Passenger visor vanity mirror.
11. Leather-wrapped steering wheel.
12. Auxiliary lighting group.
13. AM/FM radio with dual front speakers.\*
14. Gage package.
15. Glass-belted radial white-stripe tires (blackwalls on Hatchback).

In addition, Cavalier CL Wagon and Hatchback models have a rear window wiper/washer standard. Also, a tachometer is standard on the Hatchback.

\*May be deleted for credit.



Reclining contoured front seats

# Chevette

## CHEVY MAKES GOOD THINGS HAPPEN WITH DIESEL POWER AND FIVE-ON-THE-FLOOR. 1982 CHEVETTE.

For 1982, Chevette maintains its vitality—while moving on to even better things. This year, the standard 1.6 Liter engine incorporates a new swirl fuel induction system. There's an optional five-speed overdrive transmission that reduces engine RPMs at highway speeds. You can have optional diesel power. Chevette has even widened the number of models you can choose from. For 1982 we offer Chevette, the new Diesel Chevette, and Chevette Scooter—now available in a convenient 4-door hatchback as well as the traditional 2-door model. Chevette's popularity speaks for itself. Six years of proven ability, convenience and value. More than one-and-a-half million owners. Then there's Chevette's hatchback versatility. Its long list of standard features that count for a lot when you want value for your dollar. And if you want to go beyond all that, you can add options to make Chevette into your own special brand of small car. This is Chevy Chevette for 1982: a hefty sum of good looks, long-lasting quality and dependability, value and fun—at an affordable price.



New Chevette Scooter 4-Door Hatchback



Hatchback versatility  
in Chevette Coupes and Sedans



Chevette Custom interior



Diesel Chevette 2-Door Hatchback Coupe

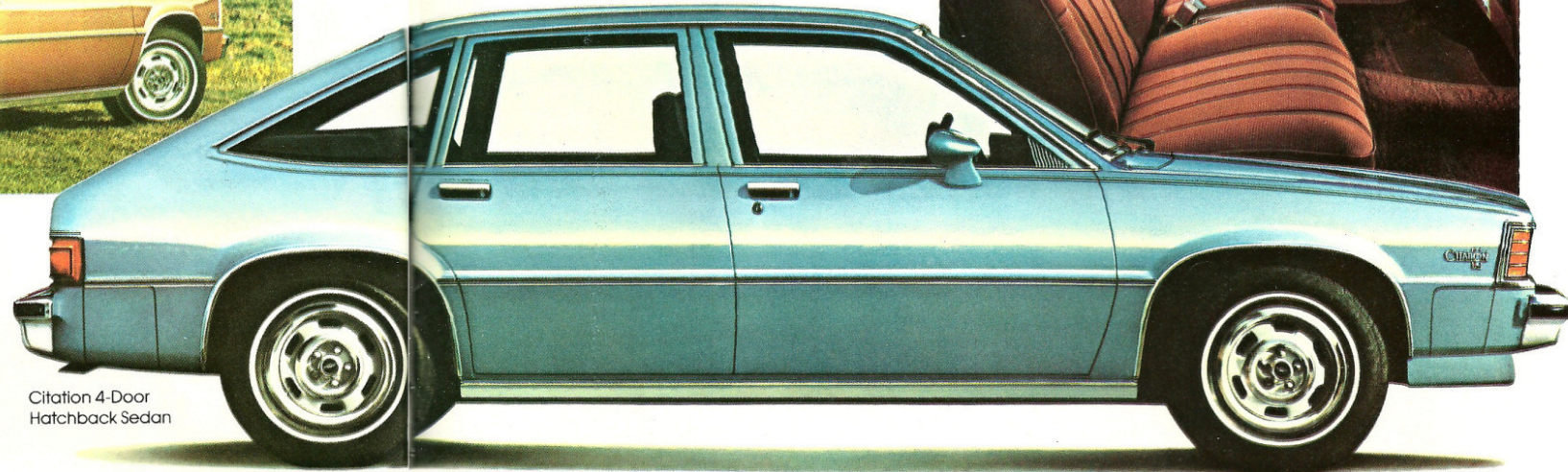


Why is Chevy Citation such a favorite? Versatility! It's a roomy, five-passenger sedan or coupe. With lift-up hatch and fold-down rear seat. For wagon-like cargo space and hauling convenience. Citation has front-wheel-drive traction, aerodynamic design, rack-and-pinion steering, MacPherson-strut front suspension, and more. It's also beautifully engineered. 1982 improvements include Electronic Fuel Injection for the standard 2.5 Liter L4 engine, new high-pressure tires, new windshield washer system. For a performer that puts on a great show, on the road or standing still, Chevy offers the Citation X-11 Hatchback Coupe. With a responsive, high-output 2.8 Liter V6. Fast-ratio rack-and-pinion steering, power brakes, sport suspension, special aluminum alloy wheels, black steel-belted radial ply tires and four-speed manual transmission. Citation. The best-selling new car ever introduced by Chevrolet.

# Citation

CHEVY MAKES ONE CAR SO VERSATILE, IT'S LIKE HAVING SEVERAL CARS IN ONE. 1982 CITATION.

Citation Custom interior



Citation 4-Door Hatchback Sedan

# Corvette

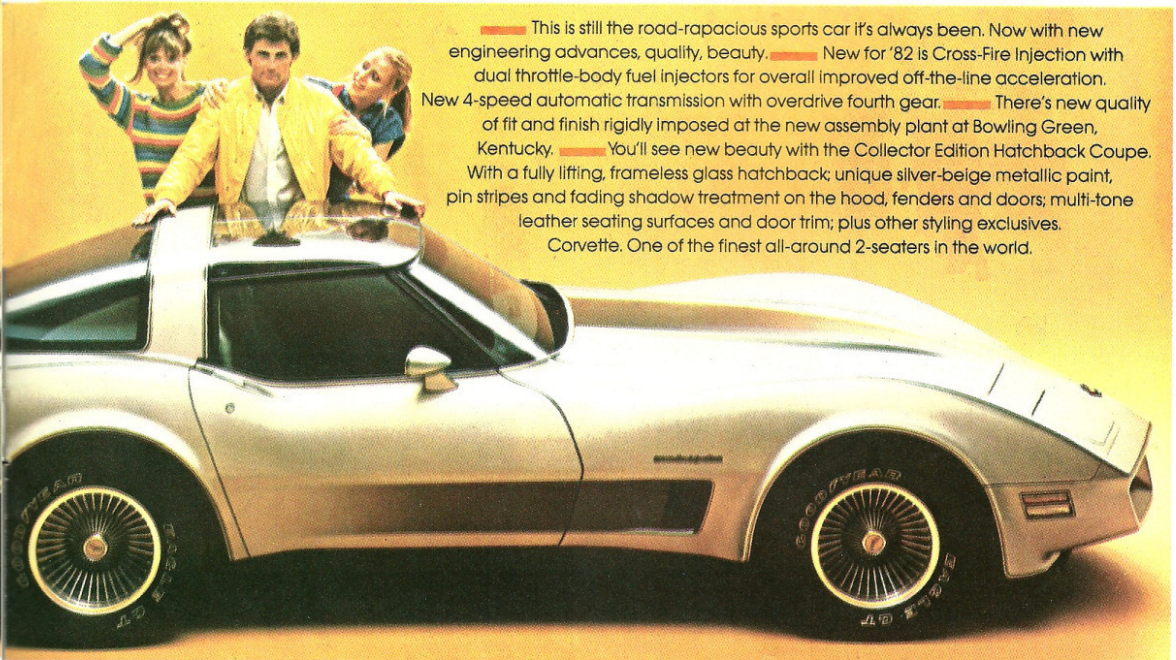
CHEVY MAKES AMERICA'S ONLY TRUE PRODUCTION SPORTS CAR EVEN BETTER. 1982 CORVETTE.



Collector Edition interior



Collector Edition with frameless glass hatchback feature



This is still the road-rapacious sports car it's always been. Now with new engineering advances, quality, beauty. New for '82 is Cross-Fire Injection with dual throttle-body fuel injectors for overall improved off-the-line acceleration. New 4-speed automatic transmission with overdrive fourth gear. There's new quality of fit and finish rigidly imposed at the new assembly plant at Bowling Green, Kentucky. You'll see new beauty with the Collector Edition Hatchback Coupe. With a fully lifting, frameless glass hatchback; unique silver-beige metallic paint, pin stripes and fading shadow treatment on the hood, fenders and doors; multi-tone leather seating surfaces and door trim; plus other styling exclusives. Corvette. One of the finest all-around 2-seaters in the world.

Malibu Classic Custom Notchback seat



# Malibu

## CHEVY MAKES A BEAUTIFUL CAR A BEAUTIFUL BUY. 1982 MALIBU CLASSIC.

There's no mistaking the new Malibu Classic for 1982. It's been given a whole new personality. On the outside you'll see a bold new grille design accented by dual rectangular headlights. Inside, a beautifully styled environment is even more in evidence. There's a distinctive instrument panel with simulated wood-grain accents and round instruments clustered in easy-to-read fashion around the steering column. A luxurious new cloth-upholstered notchback front bench seat now includes a folding center armrest standard. Under the hood is newly available diesel power in both the Malibu Classic Sedan and Wagon. But 1982 improvements don't stop with diesel. An automatic transmission is now standard. There's a new low-drag disc brake design. Improved windshield washer system. Malibu Classic continues to combine common sense with uncommon value. Six-passenger comfort. Cushioned, full foam seats. 16.6 cu. ft. of trunk space. Power steering. Power front disc/rear drum brakes. Radial tires. Extensive anti-rust treatments.



Malibu Classic Sedan



Monte Carlo Sport Coupe

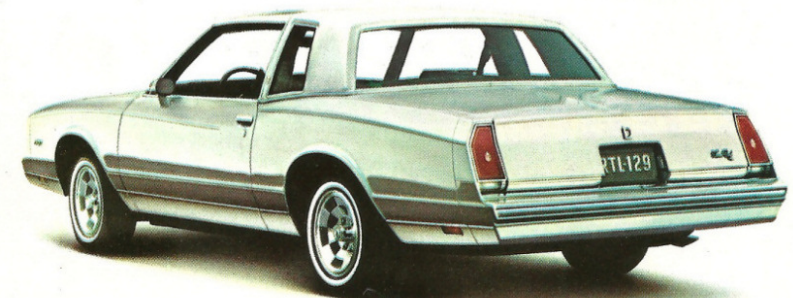


Monte Carlo Custom Notchback seat

## CHEVY MAKES ITS STANDARDS AS DEMANDING AS YOUR OWN. 1982 MONTE CARLO.

You'll see the beauty you want in Monte Carlo's trim size and low aerodynamic profile. With its poised air and classic stance. New for Monte Carlo is its available diesel power. With an ultra-high compression ratio of 22.5 to 1, it creates more power from the same amount of fuel than a gasoline engine. Monte Carlo shares your demand for comfort. A soothing, relaxing atmosphere results from the interplay of luxury interior appointments, new full foam cushioned bench seat with a folding center armrest, tasteful upholstery, and ample room for knees, heads and shoulders. The perfectionist in you will value Monte Carlo's admirable inner resources. Rust-resisting paints, dips and metals. Inner fenders, front and rear, further protect inside surfaces from stones and slush. Monte Carlo is generous with desirable standard features. Power steering. Power front disc/rear drum brakes. Automatic transmission. An on-board computer that constantly monitors gasoline engine performance under normal operating conditions. You judge a car by the way it looks and the way it feels. That's why Monte Carlo is your car.

# Monte Carlo

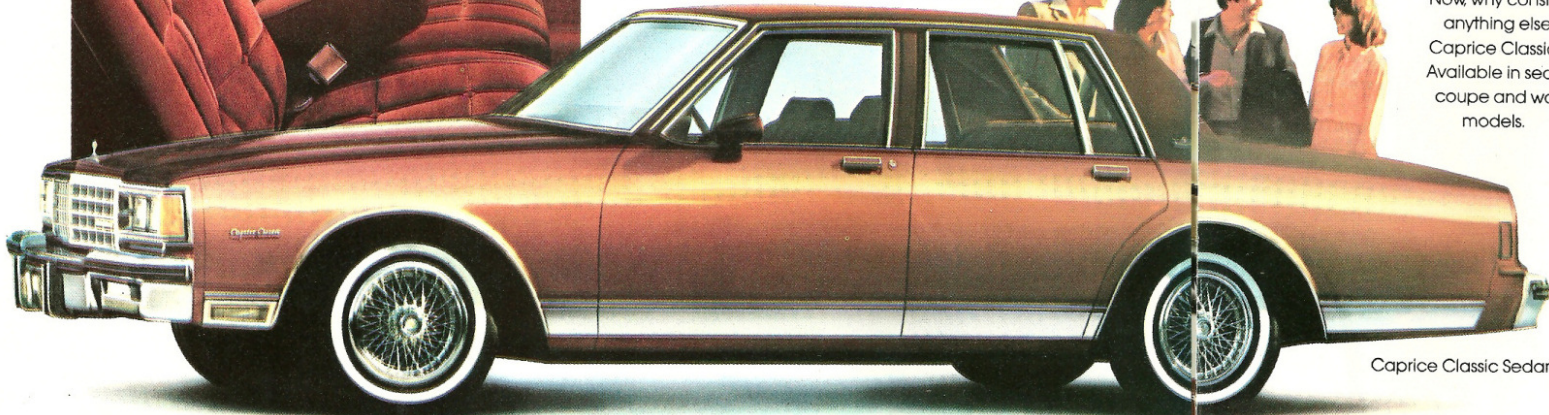


# Caprice

**CHEVY MAKES IT DIFFICULT TO CONSIDER ANYTHING ELSE. 1982 CAPRICE CLASSIC.**

When you consider everything, you won't consider anything else. That's why we ask you to put the 1982 Caprice Classic to the test. And when you do, remember to note all the things you consider important in a new car. Notice the full foam cushioned comfort for six. The luxurious interior appointments. The big 20.9-cu.-ft. trunk for family

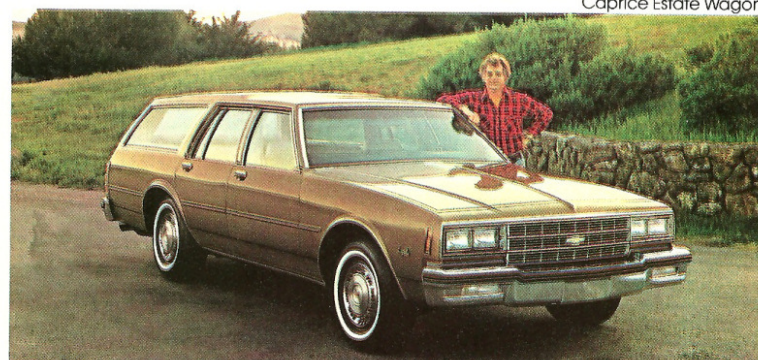
needs. Slip behind the wheel for a drive. A 3.8 Liter V6 engine, automatic transmission, power steering and power front disc/rear drum brakes are standard. Examine it with an eye on technology. There's a sophisticated computer to monitor gasoline engine functions. Built-in engine diagnostic connector. High Energy Ignition system. Consider diesel power. A 5.7 Liter Diesel V8 is available on all Caprice Classic models. Look at the bottom line—it's Chevy price. Now, why consider anything else. Caprice Classic. Available in sedan, coupe and wagon models.



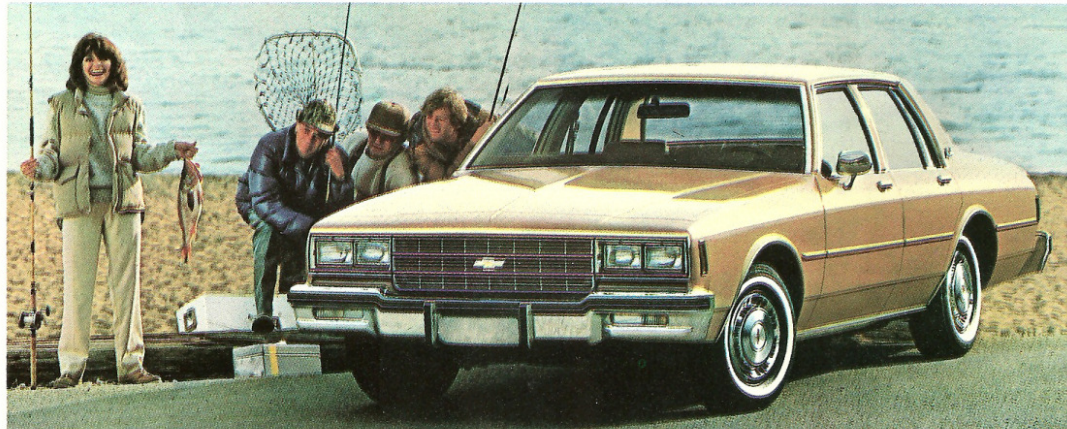
Caprice Classic Sedan



Caprice Estate Wagon



Impala Wagon



Impala Sedan

# Impala

**CHEVY MAKES IT PRACTICAL TO OWN AMERICA'S FULL-SIZE VALUE LEADER. 1982 IMPALA.**

Chevy's full-size value leader for 25 years. And for good reasons. Impala comes loaded with impressive standard features. Automatic transmission. Power steering. Power front disc/rear drum brakes. Easy-Roll steel-belted radial ply tires. High Energy Ignition. Computer Command Control. Maintenance-free Delco Freedom II battery. Choice of sedan and wagon models. And more. There's a roomy six-passenger interior. Almost 21 cu. ft. of trunk space. A 3.8 Liter V6 engine is standard on sedan. If you make long-distance trips, you may prefer the optional 4.4 Liter V8 (not available in California) or the optional 5.0 Liter V8 and automatic transmission with overdrive. An optional 5.7 Liter Diesel V8 also is available on your new Impala Sedan or Wagon.

# Wagons

**CHEVY MAKES IT EASY WITH WAGONS TO FIT YOUR NEEDS.**

Whether you're a family with loads of things to do, or a young man or woman with loads of places to go, we have three different size wagons, each tailored to your kind of hauling needs. Caprice Classic 3-Seat Wagon and Impala 2- and 3-Seat Wagons. Full-size for family, friends and gear. With over 87 cu. ft. of cargo space. Available with 5.7 Liter Diesel V8 (required in Calif.). Malibu Classic. A no-nonsense family-size wagon that sits six in comfort and offers 72.4 cu. ft. of hauling space. New for 1982 are quad rectangular headlights, restyled front end and standard automatic transmission, along with column-mounted washer/wiper controls. Also new is available diesel power. Cavalier. You'll love its front-wheel drive. Its efficient size. And it's the most complete wagon we've ever introduced, with 43 standard features. You'll find Cavalier is complete in quality, technology and comfort.



Malibu Classic Wagon



Cavalier CL Wagon



*Chevy makes it easier than ever to drive a diesel.*

America's going diesel and Chevy's leading the way. With the widest selection of diesel-powered cars and trucks in the U.S.A. From Chevette, the lowest-priced diesel model offered in America, based on a comparison of manufacturers' suggested retail prices, to the luxury of our full-size Caprice Classics. There's diesel power for Impalas, Monte Carlos, Malibu Classics. For 6- and 8-passenger wagons. Plus diesel power for the all-new Celebrity models. Chevy's got the diesel for you, with V8, V6 or 4-cylinder power.

### You'll like all the advantages of Diesel Power.

**Greater fuel economy.** There are three major reasons why diesel engines are generally more economical than comparably sized gasoline engines: air/fuel ratio, compression ratio and traditional price of fuel.

Diesels have significantly higher air/fuel ratios than comparable gasoline engines—which means that diesels burn proportionately less fuel. A diesel's air/fuel ratio is about 80 to 1 at idle and 20 to 1 at full load. Compare this to gas engines, which use about a 16 to 1 mixture of air and fuel at idle, and a 14.7 to 1 mixture at full load. Diesel engines depend on compression for ignition of fuel, whereas the gas engine depends on spark plugs. The diesel, with its higher compression ratio, more efficiently converts fuel-heat energy into mechanical energy. Thanks to functional differences like these, you can get more miles per gallon with a diesel engine than with a comparably sized gasoline engine. What's more, you do it with traditionally lower-priced fuel.

**Excellent resale history.** According to NADA retail used-car prices, diesel-powered cars have generally returned most of the initial extra cost of the diesel at resale time.

### More about diesels...

**Quick starting.** With improved "quick-on" glow-plug operation and the incorporation of a special precombustion chamber design, a diesel Chevrolet will be ready to start in a matter of seconds.

**Available fuel.** Most fuel stops on interstate highways are already handling diesel fuel. Urban and suburban areas also have plentiful outlets.

**A word about engines.** Some Chevrolets are equipped with engines produced by other GM divisions, subsidiaries, or affiliated companies worldwide. See your dealer for details.

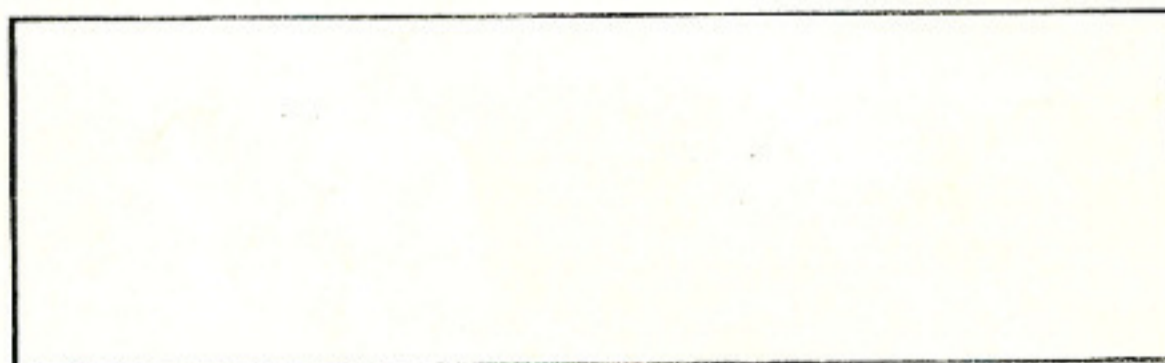
The right is reserved to make changes at any time, without notice, in prices, colors, materials, equipment, specifications and models. Check your Chevrolet dealer for complete information.



MARK OF EXCELLENCE

OCTOBER, 1981

LITHO IN U.S.A. 4090



*Chevy makes good things happen... for you!*