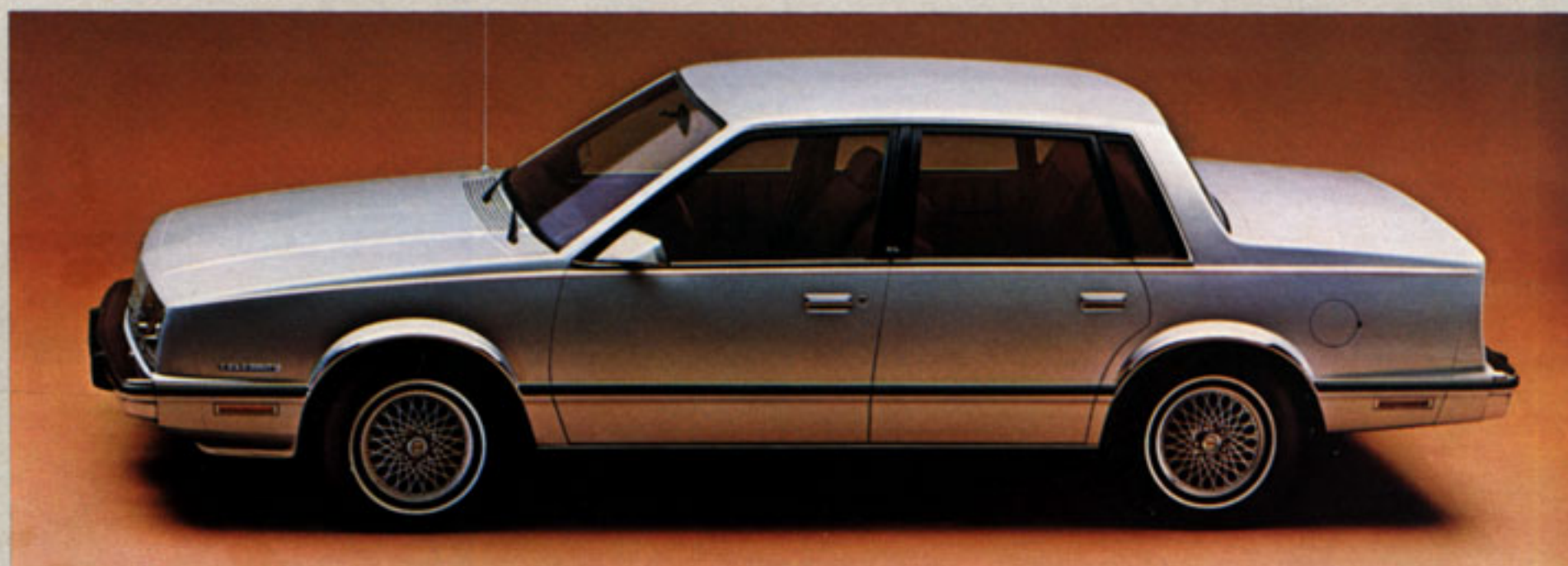


CELEBRITY.★



***THE BRIGHT NEW SHAPE
OF CHEVROLET.***





CELEBRITY SEDAN SHOWN ABOVE AND ON COVER IN SILVER.

CELEBRITY. THE BRIGHT NEW SHAPE OF CHEVROLET.

The 1982 Celebrity is more than a brand-new car. It's the bright new shape of Chevrolet. And that shape is more than just bold, contemporary styling.

It's the shape of aerodynamics. Celebrity cuts lean and low through the wind. It's the shape of state-of-the-art technology. With front-wheel drive for superb

traction in snow and mud. And Electronic Fuel Injection with standard transverse-mounted 2.5 Liter 4-cylinder engine. There's even new available V6 diesel power.

It's the shape of comfortable room. With better front head room than over 90% of all import models sold in the United States. And more restful foot room, for three

rear-seat passengers, than many traditional full-size cars.

It's the shape of precision design. With laser beams, gamma rays and robots—new technology for a quality build.

It's the shape of efficiency. Aerodynamic design, advanced technology and precision engineering all add up to the kind of efficiency you've been looking for.

It's the shape of things to come. For 1982 and beyond—Celebrity. The bright new shape of Chevrolet.

IMPORTANT: A WORD ABOUT THIS CATALOG. We have tried to make this catalog as

comprehensive and factual as possible and we hope you find it helpful. However, since the time of printing, some of the information you will find here may have been updated. Also, some of the equipment shown or described throughout this catalog is available at extra cost. Your dealer has details and, before ordering, you should ask him to bring you up to date.

The right is reserved to make changes at any time, without notice, in prices, colors, materials, equipment, specifications and models. Check with your Chevrolet dealer for complete information.

★ A shape so aerodynamic it requires less than 12 horsepower to cruise at 50 miles an hour.

★ Shaped to keep out noise. Windshield and rear-window moldings are flush-mounted to cut wind resistance and noise. Inside, lightweight, highly effective sound isolators and deadeners. Even the hiss made by the tires on wet pavement has been muffled.

★ Shaped for utility. The luggage compartment floor is low and the trunk lid is high—providing family-size room in a 16.2-cu.-ft. trunk.

★ A shape less than 16 feet, bumper to bumper, yet Celebrity gives you better than six feet of combined front- and rear-seat leg room.

★ Shaped for comfortable room. Only a tenth of an inch separates Celebrity's front-seat leg room from the biggest of full-size cars. And the middle rear-seat passenger not only enjoys a full measure of foot room but good head, leg and hip room.

★ Shaped to withstand the elements. We've designed out many areas subject to corrosion and designed in anti-corrosion materials and treatments.

★ Shaped by precision. With robot technology, laser beam build-fit techniques, gamma ray inspections and over a thousand state-of-the-art quality checks.

★ Shaped for more front head room than over 90% of all import models sold in the U.S.

★ Shaped with a deep, high-luster acrylic finish.

★ Shaped to fit. Doors are mounted with precise alignment to allow closing with a light touch.

★ Shaped for elegance and convenience. There's the look of brushed pewter on the standard instrument panel. The convenience of a front-seat stowage bin with coin slots.

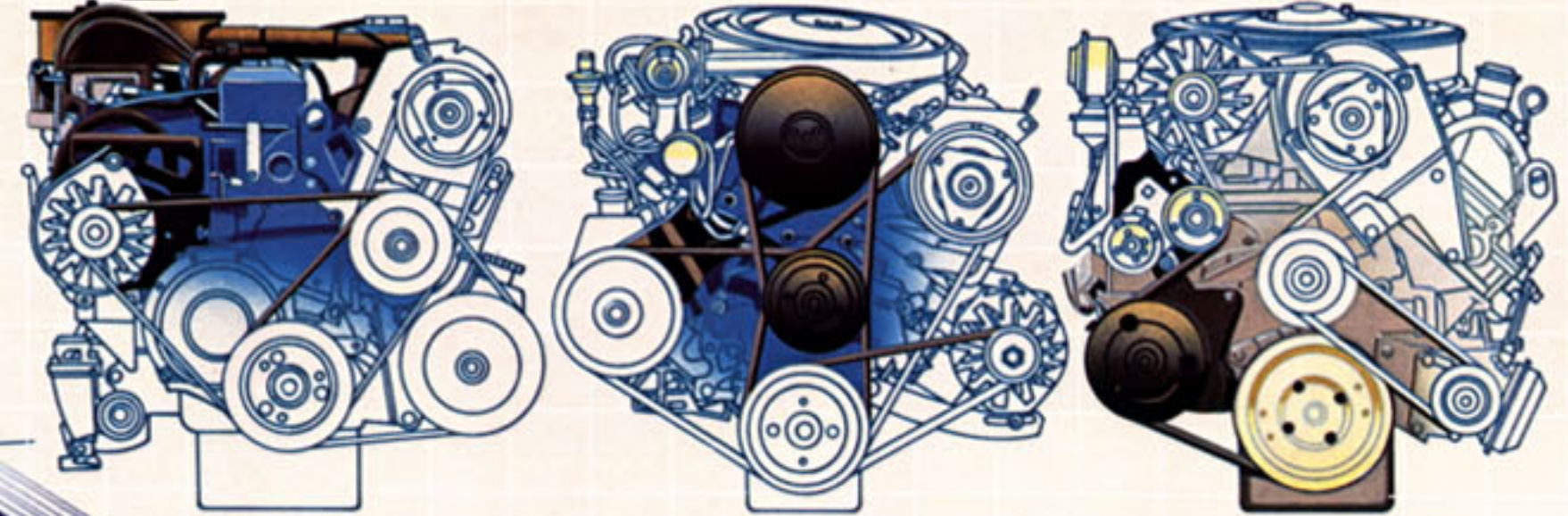
★ Shaped to take on the road. Celebrity's excellent directional stability helps give you a straight-line road feel. Yet steering response is quick and true.

★ Shaped to perform. There's a choice of three engines to match your driving. With the standard electronically fuel injected 2.5 Liter 4-cylinder engine and automatic transmission, Celebrity's EPA mileage estimates are truly impressive.

40 EST. HWY. **25** EPA EST. MPG*

★ Also available is a lively and responsive gasoline-powered 2.8 Liter V6 engine. Its features include strong cast-iron cylinder block and head in a compact design.

34 EST. HWY. **22** EPA EST. MPG*
33 EST. HWY. (CALIF.)



★ Shaped for visibility with a sharply inclined aerodynamic front windshield (57° sedan and 58° coupe) and sloping hood.

★ For even better mileage estimates, consider available 4.3 Liter V6 Diesel power. Remember, a diesel has no spark plugs, distributor or carburetor to replace or service. (Available January '82.)

EPA mileage estimates not available at time of printing. Preliminary estimates indicate even higher MPG than gas engine models. See your dealer for published estimates.

*Use estimated MPG for comparisons. Your mileage may differ depending on speed, distance, weather. Actual highway mileage lower.

★ Shaped for better fuel economy than 83% of all 1975-81 model cars rated by the EPA. (Standard powertrains compared.)

★ A shape that's loaded with standard features. For your driving satisfaction, automatic transmission, power rack-and-pinion steering and power front disc/rear drum brakes.

CELEBRITY. SHAPED BY HIGH TECHNOLOGY.



CELEBRITY COUPE SHOWN IN SILVER.

CELEBRITY. FOR THE WAY YOU ARE TODAY.



CL

**CELEBRITY. SHAPED TO SATISFY
YOUR TASTE FOR LUXURY.**

CELEBRITY CL SPECIAL CUSTOM INTERIOR.



CL



OPTIONAL RECLINING SEATS WITH CELEBRITY CL SPECIAL CUSTOM INTERIOR.



CS

CELEBRITY CS CUSTOM INTERIOR ▲

CELEBRITY STANDARD BENCH SEAT ▼



CELEBRITY. SHAPED FOR DRIVER AND PASSENGER COMFORT.

When you take the wheel of a new Celebrity, you'll discover an interior that's both comfortable and roomy. And you have a great choice. The optional CL Special Custom Interior, shown above and on the preceding pages, features 45/45 individual front seats in plush velour and a floor console with transmission

shifter. There's also a distinctive instrument panel and luxury-level steering wheel, along with special carpeting and door trim, deluxe luggage compartment trim, rear door dome lamp switches, dome reading lamp and right-hand visor mirror. The optional CS Custom Interior, shown

at right, features a notchback bench seat with fold-down armrest in a choice of cloth or vinyl. The standard bench seat, also shown at right, is available with a stationary armrest in either standard cloth or optional vinyl. Also available is an optional 45/45 front seat in the same fabrics. See the chart for details.

All Celebrity models feature color-keyed carpeting and large padded armrests. Other conveniences include coin slots in both the front-seat stowage bin and glove compartment door... an extended front-seat track... cigarette lighter... and ashtray, glove compartment and instrument panel courtesy lamps.

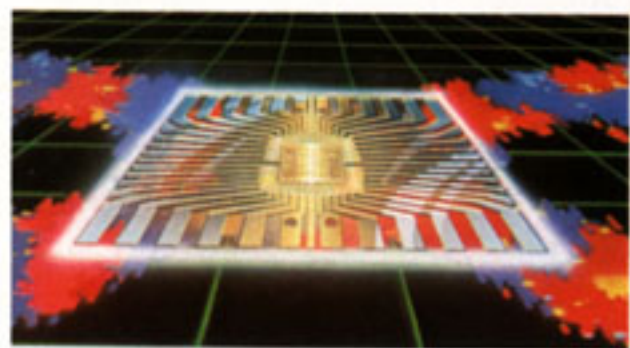
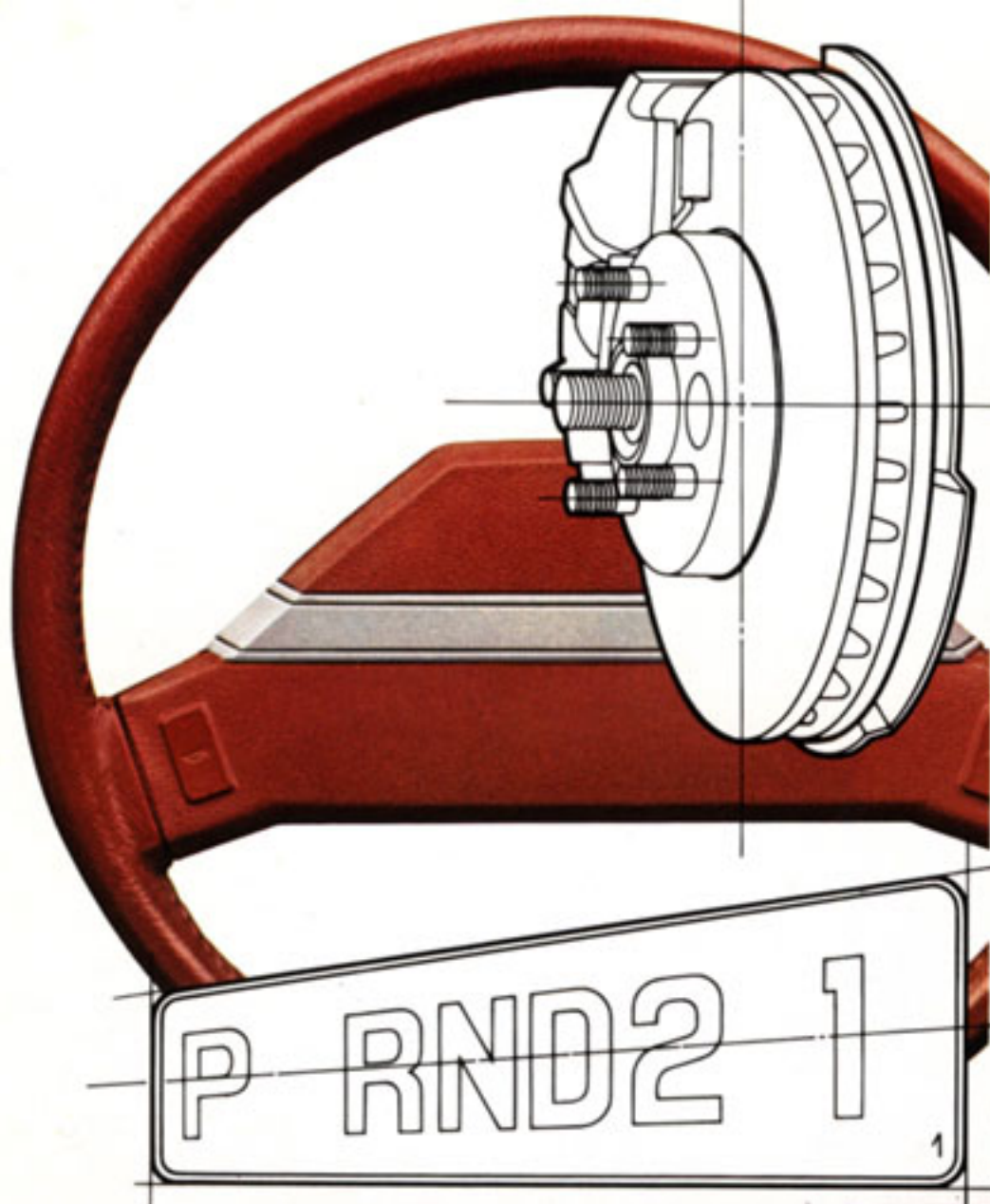
COLOR AND TRIM COMBINATIONS

INTERIOR COLORS	BEIGE	DARK BLUE	CAMEL	SILVER GRAY	JADE	REDWOOD
Standard Front Bench & Optional 45/45 Split Front Seat						
Standard Cloth		X	X			X
Optional Vinyl		X	X			X
Optional CS Custom Interior w/Notchback Front Bench Seat						
Cloth		X	X		X	X
Vinyl		X	X	X		X
Optional CL Special Custom Interior with 45/45 Split Front Seat						
Special Custom Cloth	X			X	X	X

EXTERIOR COLORS ▼	INTERIOR COLORS ► BEIGE	DARK BLUE	CAMEL	SILVER GRAY	JADE	REDWOOD
WHITE	X	X	X	X	X	X
SILVER (METALLIC)		X		X	X	X
LIGHT BLUE (METALLIC)		X				
DARK BLUE (METALLIC)	X	X	X	X		
DARK JADE (METALLIC)	X		X		X	
BEIGE	X	X	X			X
LIGHT BROWN (METALLIC)	X		X			
REDWOOD (METALLIC)	X		X			X
SILVER GRAY		X		X		X
CHARCOAL (METALLIC)				X		

OPTIONAL CUSTOM TWO-TONE COLORS
 Silver Gray/Silver (Metallic) X X
 Dark Blue/Light Blue (Metallics) X

Vinyl roof colors: Silver Gray, Dark Blue, Light Jade, Beige, Camel, Dark Redwood and White.



CELEBRITY. STANDARD FEATURES TO FIT THE NAME.

Celebrity – the bright new shape of Chevrolet – is available as a sedan or coupe. Both come with the kinds of features that make Celebrity a pleasure to own and drive.

1. POWER STEERING, AUTOMATIC TRANSMISSION AND POWER FRONT DISC/REAR DRUM BRAKES add to your driving enjoyment.
2. 16-CUBIC-FOOT TRUNK is shaped for a family's needs. In addition, the floor and the wheelhousings are carpeted.

3. COMPUTER COMMAND CONTROL is a sophisticated, thoroughly tested on-board computer that continuously monitors gasoline engine functions. It also fine-tunes engine performance under all normal operating conditions as you drive. Air-fuel mixtures are constantly adjusted to driving conditions, and the system helps compensate for altitude, barometric and temperature changes.

Another benefit of Computer Command

Control is that it is covered by the limited 5-year/50,000-mile emissions system warranty. Ask your dealer for details.

4. AM RADIO WITH DUAL FRONT SPEAKERS provides you with outstanding reception.*

5. ELECTRONIC FUEL INJECTION, with the standard 2.5 Liter engine, is a completely computer-controlled, fuel metering system.


6. FULL WHEEL COVERS with radial ply tires.

7. BODY-SIDE MOLDINGS help protect your

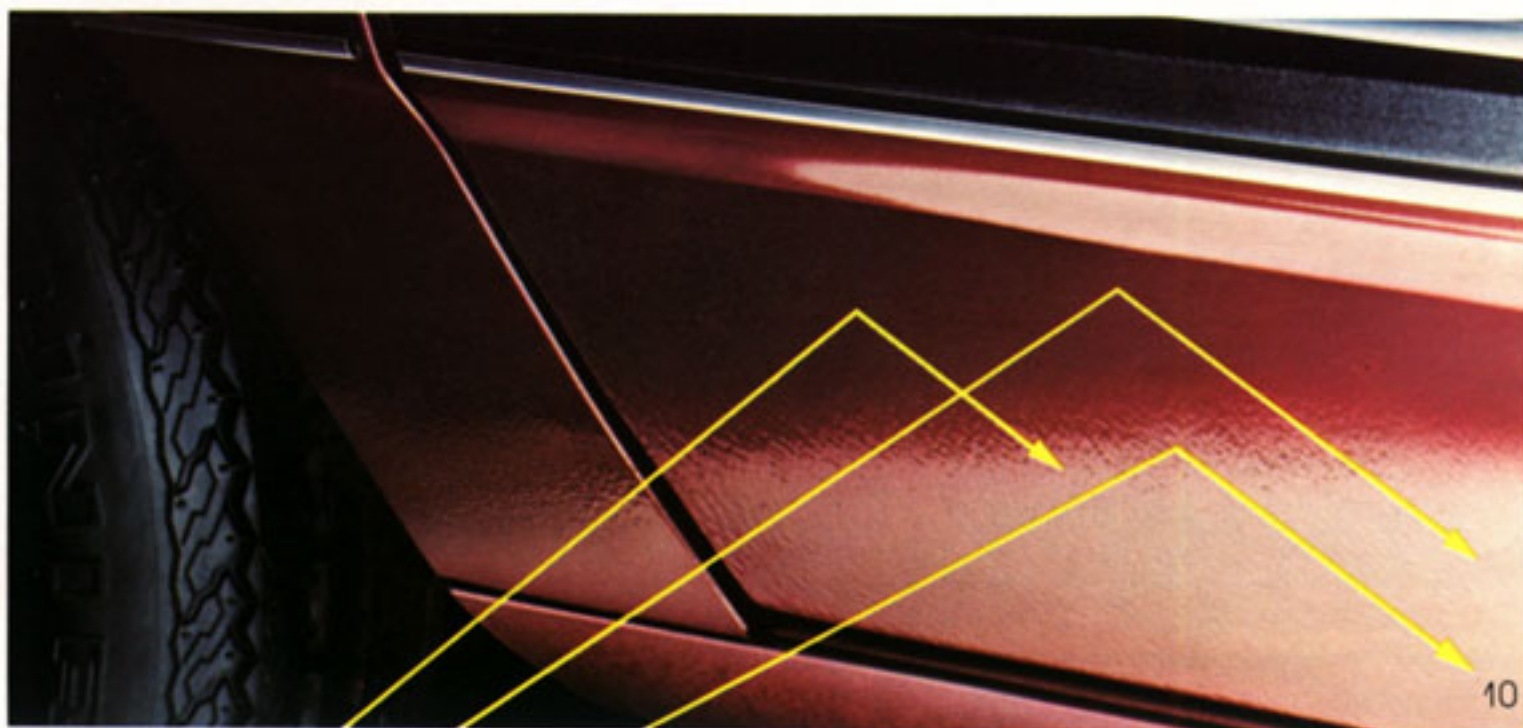
car from accidental scratches and nicks you can get in tight parking places. Combined with the bumper rub strips, they give your Celebrity 360° protection.

8. FLUIDIC WINDSHIELD WASHER SYSTEM sprays big drops in a wide pattern to help clean the windshield faster.

9. SIDE WINDOW DEFOGGERS help keep the side windows from becoming clouded by frost and mist.



CELEBRITY



10. PLASTISOL is a hard plastic finish that guards the lower body of your Celebrity from stone chipping.

11. COLUMN-MOUNTED "SMART SWITCH" controls many important functions like windshield washing and wiping, hi/lo beam and turn signal switching.

And that's just for starters. Celebrity's list of standard features and built-in value goes on and on.

Some of Celebrity's significant features include: MacPherson-strut front suspension with stabilizer bar. Trailing-arm rear suspension with coil springs and integral stabilizer bar. Power rack-and-pinion steering. Power front disc/rear drum brake system with audible wear sensors in front. Easy-Roll GM Specification fiberglass-belted radial ply tires with a high pressure recommendation for low rolling resistance. Foot- or hand-operated

side-lift jack. Chrome bumpers with rub strips. Instrument panel with brushed pewter look. Roll-down windows in all doors. Recessed dual rectangular headlamps. Tri-color tail lamps. Power ventilation system. Glove compartment, ashtray and instrument courtesy lamps. Outside LH patch-type mirror. Theft-deterrent, horizontal-sliding interior door lock buttons.

Celebrity is designed for value in other

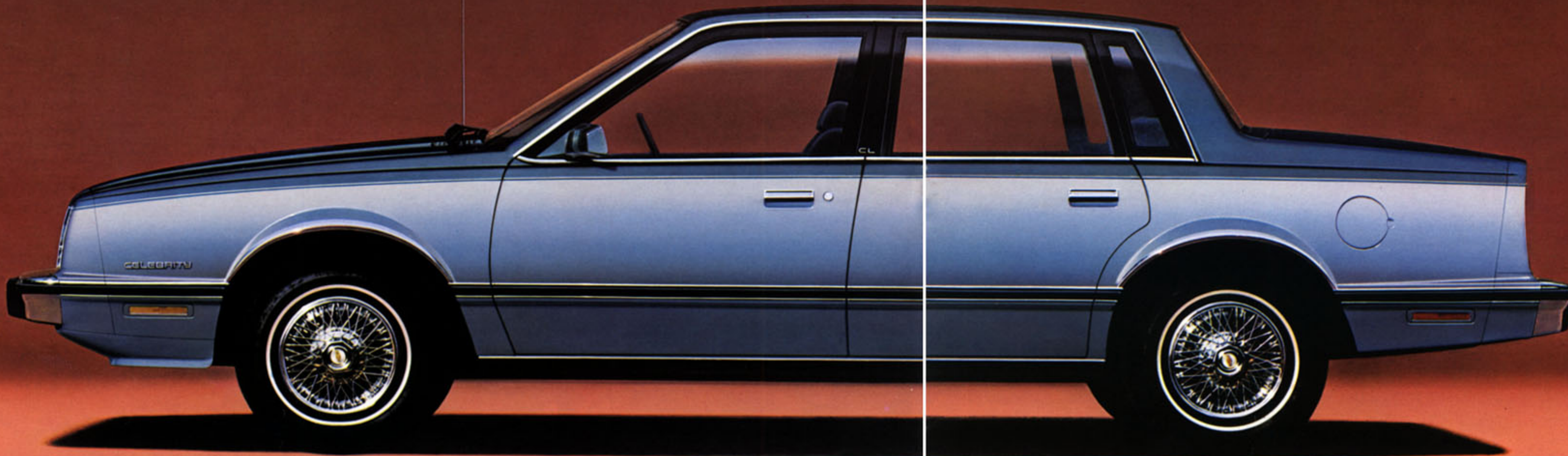
ways, too. It follows the Chevrolet tradition of providing you with a lot of car for the money. There are long recommended service intervals, a High Energy Ignition system, with gas engines, for extended time between recommended tune-ups, a Delco Freedom II battery that never needs refilling, and a limited powertrain warranty spanning two years or 24,000 miles (see your dealer for details).

*May be deleted for credit.

A Word About Assembly, Components and Optional Equipment in These Chevrolets.

The Chevrolets described in this catalog are assembled at facilities of General Motors Corporation operated by the GM Assembly Division or GM of Canada. These vehicles incorporate thousands of different components produced by various divisions of General Motors and by various suppliers to General Motors. From time to time during the manufacturing process, it may be necessary, in order to meet public demand for particular vehicles or equipment, or to meet federally mandated emissions, safety and fuel economy requirements, or for other reasons, to produce Chevrolet products with different components or differently sourced components than initially scheduled. All such components have been approved for use in Chevrolet products and will provide the quality performance associated with the Chevrolet name.

With respect to extra cost optional equipment, make certain you specify the type of equipment you desire on your vehicle when ordering it from your dealer. Some options may be unavailable when your car is built. Your dealer receives advice regarding current availability of options. You may ask the dealer for this information. GM also requests the dealer to advise you if an option you ordered is unavailable. We suggest that you verify that your car includes optional equipment you ordered or, if there are changes, that they are acceptable to you.



CELEBRITY SEDAN SHOWN IN CUSTOM TWO-TONE DARK BLUE/LIGHT BLUE.

CELEBRITY. OPTIONS FOR THAT PERSONAL TOUCH.

Celebrity offers you a wide range of options.

- 1. POWER WINDOWS AND POWER DOOR LOCK SYSTEMS** let you open and close all windows and lock and unlock all doors from master control switches located on the door panel near the driver.
- 2. RECLINING DRIVER AND PASSENGER SEAT BACKS** can be adjusted individually for driver and front passenger seats.
- 3. DELUXE LUGGAGE COMPARTMENT TRIM** is a feature included only with the available CL Special Custom Interior.
- 4. VINYL ROOF COVER** is a touch of class that's available in seven colors.
- 5. INTERMITTENT WINDSHIELD WIPER SYSTEM** lets you vary the wipe cycle to match weather conditions. **AUTOMATIC SPEED CONTROL** includes the Resume Speed feature.
- 6. F41 SPORT SUSPENSION** includes larger diameter front and rear stabilizer bars and heavy-duty shock absorbers.
- 7. AM/FM STEREO RADIO & AM/FM STEREO RADIO WITH STEREO CASSETTE TAPE AND**

DIGITAL CLOCK are available GM-Delco Sound Systems. (Clock optional with AM/FM stereo.)

- 8. ELECTRIC REAR WINDOW DEFOGGER** shown removing frost from the rear window.
- 9. SPORT WHEEL COVERS** feature a distinctive spoke-accented style.

Other options.

COMFORT & CONVENIENCE: Air conditioning • Front and rear bumper guards • Digital clock • Gage package • Tinted glass • Halogen hi-beam headlamps • Power seat • Comfortilt steering wheel • Engine block and fuel line heater (diesel engine only) • Console • Door edge guard moldings • Color-keyed floor mats, front and/or rear.

MIRRORS: LH remote-control outside rearview • Sport, LH remote-control and RH convex manual • Twin remote sport.

GM-DELCO RADIO EQUIPMENT: AM/FM radio • AM/FM stereo radio with 8-track tape and digital clock • Dual rear speakers.

TIRES: P185/80R-13 fiberglass-belted radial

ply white-stripe • P185/80R-13 steel-belted radial ply blackwall or white-stripe • P205/70R-13 steel-belted radial ply blackwall or white-stripe (F41 required) • Puncture-sealant tires (P185/80R-13 steel-belted radial ply white-stripe required).

WHEEL EQUIPMENT: Rally wheels • Wire wheel covers • Wire wheel cover locking package. **SPECIAL WHEEL COVERS** and 14" wheels are included only with the available diesel engine.

APPEARANCE: Body pin striping • Custom Two-Tone • Exterior molding package.

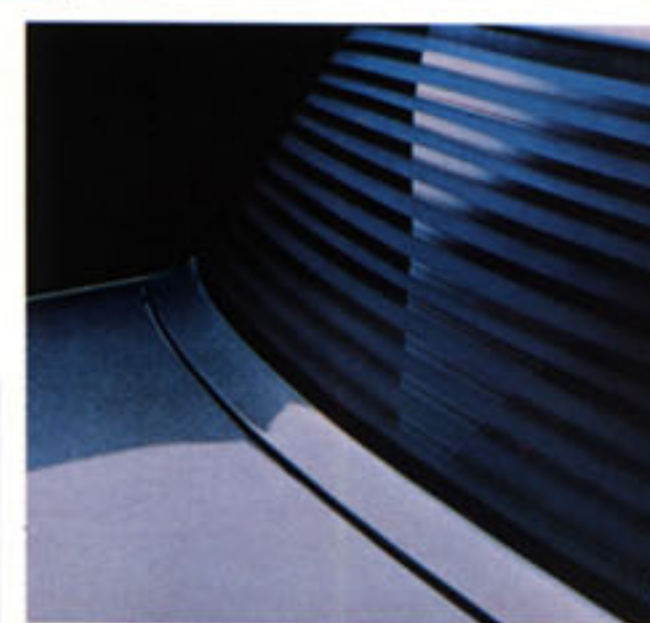
HEAVY-DUTY EQUIPMENT: Heavy-duty battery • Heavy-duty cooling • Heavy-duty front and rear suspension.

GM CONTINUOUS PROTECTION PLAN: Offers service protection in addition to that provided by GM's new vehicle limited warranty. Ask your dealer about it. Coverage available only in the U.S.A. and Canada.

Also, see your dealer for details and information about GM's 24-month/24,000-mile Power-Protection-Plus Limited Warranty.



F41 SUSPENSION



IMPORTANT ANTI-CORROSION MEASURES.

Many areas critical to corrosion damage are designed out by providing drainage and eliminating pockets that collect moisture and debris. Second, structural materials and barriers that are especially impervious to corrosion are designed in. Plus many final finishing procedures like zinc-rich primers and Plastisol lower body stone-chip protection are used.

Chevrolet also provides a Three-Year Perforation-From-Corrosion Limited Warranty. (Exhaust system components not included. See your Chevrolet dealer for details on other limitations.)

SAFETY FEATURES: OCCUPANT PROTECTION

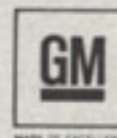
Manual lap/shoulder belts with push-button buckles for driver and front passenger (driver's side includes visual and audible warning system) • Manual lap belts with push-button buckles for rear passenger positions • Energy-absorbing steering column • Passenger guard door locks • Safety door latches and stamped steel hinges • Folding seat back latches (coupe) • Energy-absorbing instrument panel and front seat back tops • Laminated windshield/tempered side and rear glass • Safety armrests • Identification symbols for controls and displays.

ACCIDENT AVOIDANCE

Side marker lights and reflectors • Parking lamps that illuminate with headlamps • Four-way hazard warning flasher • Backup lights • Lane-change feature in direction signal control • Windshield defrosters, washer and dual-speed wipers • Vinyl-edged inside mirror • Outside rearview mirror • Dual master cylinder brake system with warning light • Starter safety switch • Dual-action safety hood latches.

ANTI-THEFT

Audible anti-theft ignition key reminder • Anti-theft steering column lock • Inside hood release.



CELEBRITY.

Chevy makes good things happen... for you!

DIMENSIONS

Exterior	2-Door	4-Door
Wheelbase	104.9	104.9
Length (overall)	188.3	188.3
Width (overall)	67.8	67.8
Height (loaded)	53.7	53.7
Tread - Front	58.7	58.7
Tread - Rear	57.0	57.0
Interior		
Head Room - Front	38.6	38.6
Head Room - Rear	37.9	38.0
Leg Room - Front	42.1	42.1
Leg Room - Rear	36.1	36.4
Hip Room - Front	52.3	52.4
Hip Room - Rear	53.6	52.7
Shoulder Room - Front	56.3	56.2
Shoulder Room - Rear	57.1	56.2
Usable Luggage Capacity (cu. ft.)	16.2	16.2
Fuel Tank Capacity (gals.)	15.7*	15.7*

*16.4 (gasoline V6), 16.6 (diesel V6)

POWER TEAMS

Engine	Ordering Code	Displacement (cu. in.)	Engine Availability	Automatic Transmission
2.5 Liter L4 (A)	LR8	151	Std.	Std.
2.8 Liter 2-Bbl. V6 (B)	LE2	173	EC	Std.
4.3 Liter Diesel V6 (C)(1)	LT7	260	EC	Std.

Std. - Standard. EC - Optional at Extra Cost.

(1) Available January 1982.

PRODUCED BY GM:

- (A) PONTIAC MOTOR DIVISION
- (B) CHEVROLET MOTOR DIVISION
- (C) OLDSMOBILE MOTOR DIVISION

A Word About Engines.

Some Chevrolets are equipped with engines produced by other GM divisions, subsidiaries, or affiliated companies worldwide. See your dealer for details.

LONG RECOMMENDED SERVICE INTERVALS†

Engine Oil 12 months or 7,500 miles*
 Oil Filter 12 months or 7,500 miles; every 15,000 miles thereafter*
 Spark Plugs** Up to 30,000 miles
 Chassis Lubrication 12 months or 7,500 miles
 Automatic Transmission Fluid Change Every 100,000 miles

†See Owner's Manual for conditions requiring more frequent intervals.

*5,000 miles with diesel. **Except diesel.



Litho in U.S.A. 4084 October 1981