

CITATION

1981



37

It works.

Citation is the best-selling new car Chevrolet has ever introduced. It works very well at everything it was designed to do. And Citation was designed to do a lot.

It works like a mid-size because it has room for five. That's good news for family and friends on long trips or around town. Yet Citation is a compact car less than 15 feet in length. For easy parking.

It works with the traction of front-wheel drive. Citation pulls through mud, sand and snow. It tracks down backwoods roads and up mountain highways. With reassuring ease.

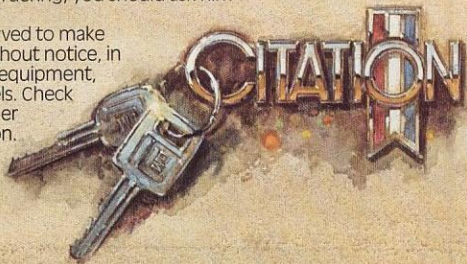
It works like a station wagon because its hatch invites all sorts of gear. Remove the cover for hidden storage, fold down the rear seat and Citation turns into a hauling hero. No more bags of groceries in your lap.

Yet, for all its practicality, Citation shines with personality. Indeed, it's a handsome bit of machinery. With all sorts of style, both standard and optional. Economical to drive, too.* It's all here in this catalog.

See for yourself what over half a million Citation owners already know. It works.

A word about this catalog. We have tried to make this catalog as comprehensive and factual as possible and we hope you find it helpful. However, since the time of printing, some of the information you will find here may have been updated. Also, some of the equipment shown or described throughout this catalog is available at extra cost. Your dealer has details and, before ordering, you should ask him to bring you up to date.

The right is reserved to make changes at any time, without notice, in prices, colors, materials, equipment, specifications and models. Check with your Chevrolet dealer for complete information.



*For Citation EPA estimated mileage, check the wall poster displayed at your Chevrolet dealer's showroom or ask for an EPA mileage sheet to take home with you.

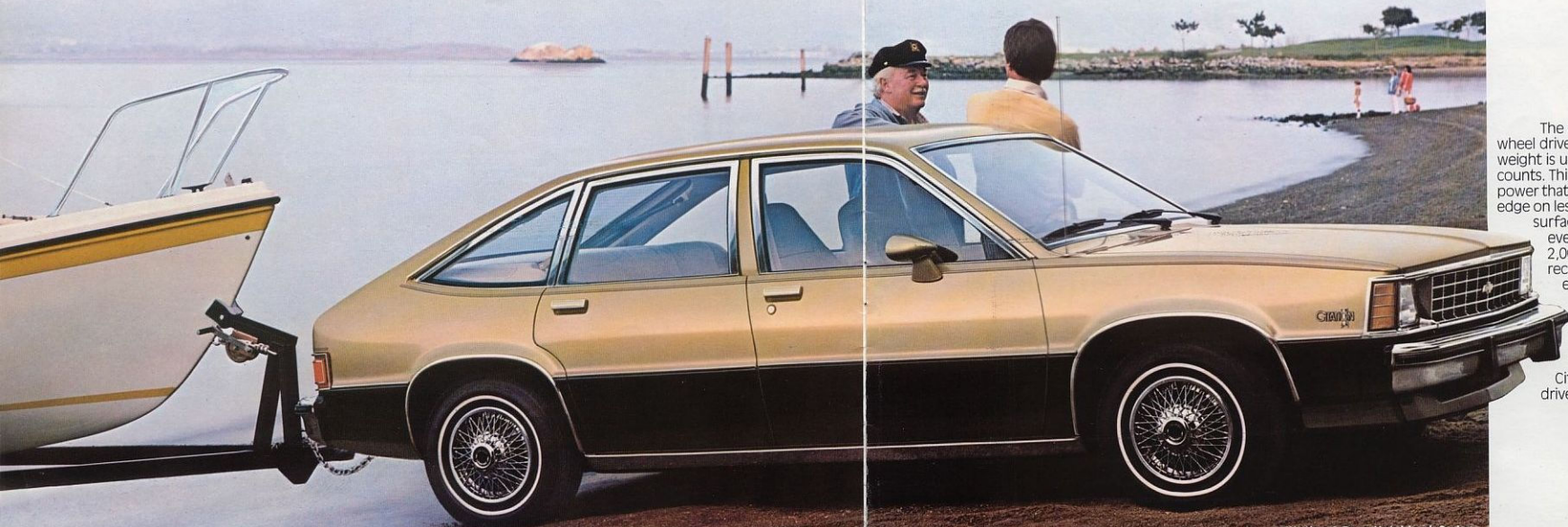


Citation 4-Door Hatchback Sedan



It works like a mid-size.

Citation is the compact car with mid-size room. Fact. Based on EPA interior volume classifications. Which all means a comfortable ride for up to five passengers.



Front-wheel drive helps you get in. And out.

The beauty of front-wheel drive is traction. Most weight is up front, where it counts. This means pulling power that gives you an edge on less-than-ideal surfaces. You can even tow up to 2,000 pounds with recommended equipment. See your dealer for details. Good times are found in all kinds of places with Citation front-wheel-drive traction.

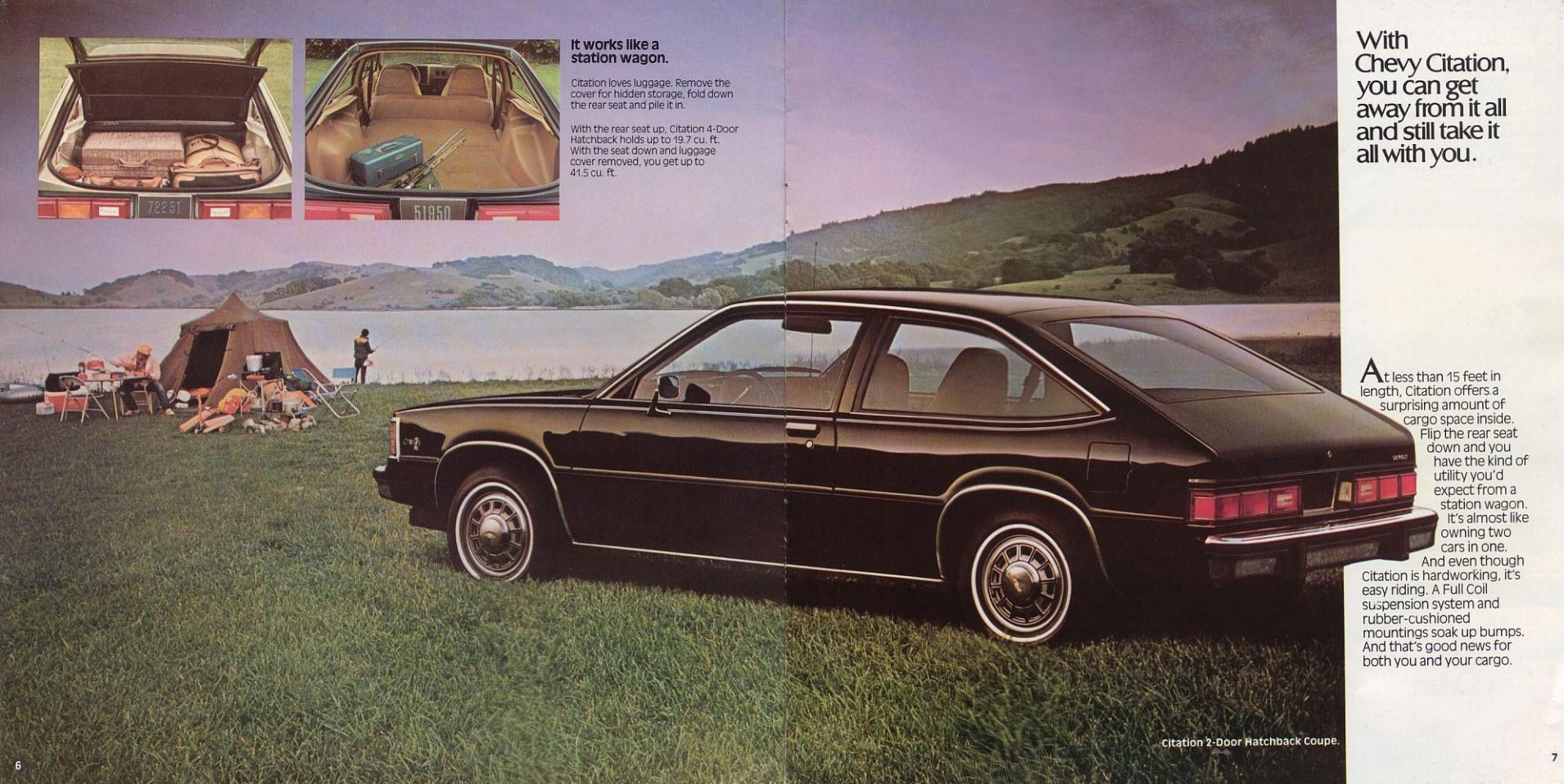
Citation 4-Door Hatchback Sedan.



It works like a station wagon.

Citation loves luggage. Remove the cover for hidden storage, fold down the rear seat and pile it in.

With the rear seat up, Citation 4-Door Hatchback holds up to 19.7 cu. ft. With the seat down and luggage cover removed, you get up to 41.5 cu. ft.



With Chevy Citation, you can get away from it all and still take it all with you.

At less than 15 feet in length, Citation offers a surprising amount of cargo space inside.

Flip the rear seat down and you have the kind of utility you'd expect from a station wagon.

It's almost like owning two cars in one.

And even though Citation is hardworking, it's easy riding. A Full Coil suspension system and rubber-cushioned mountings soak up bumps. And that's good news for both you and your cargo.

Citation 2-Door Hatchback Coupe.

It works like a performance car.

Start with front-wheel drive and rack-and-pinion steering. Citation X-11 Sport Equipment Package adds to those a high output 2.8 Liter V6, power brakes, Sport Suspension, bucket seats, standard four-speed manual or optional automatic transmissions, special axle ratios and much more. See your dealer for details.



X-11.
It gives you
goose bumps.

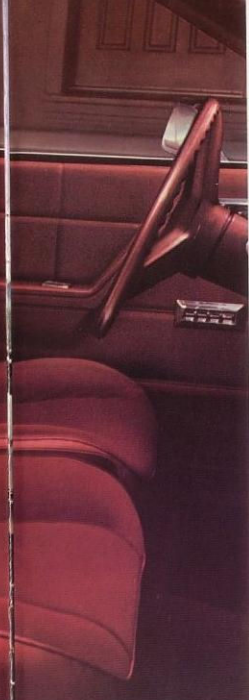


Citation X-11 2-Door Hatchback Coupe.

Here's something to really feel good about. The experience of driving a responsive, sporty-looking automobile. A car that makes the going great. X-11 delivers performance that puts you in command. And looks good doing it. In addition to special performance equipment, X-11 is styled right with black grille and body accents, hood air scoop, rear spoiler, bucket seats, sport steering wheel, tach and gages, sport mirrors, aluminum alloy wheels, steel-belted radial ply tires, Sport Suspension and more. All standard. And all excitement.



A



B



C



D

Interiors

A good look at good looks.

(A) Citation Custom interior is optional; Sedan cloth bucket seat shown in maroon. (B) Citation color-keyed instrument panel with two-spoke steering wheel and warning lights for temperature, generator, oil

pressure and brake system. (C) Bucket seats shown in beige are optional and available in vinyl or cloth trim. (D) Standard Citation interior shown with cloth bench seat in dark blue. All bench seats for 1981 feature a convenient new separator. See page 12 for seat and trim combinations.

Interior Dimensions (Inches)	2-Door Hatchback	4-Door Hatchback
Head Room — Front	38.1	38.1
Head Room — Rear	37.7	37.7
Leg Room — Front	42.2	42.2
Leg Room — Rear	34.5	35.5
Hip Room — Front	55.1	55.1
Hip Room — Rear	54.1	55.0
Shoulder Room — Front	56.2	56.3
Shoulder Room — Rear	56.2	56.3
Total Cargo Volume Index (cu. ft.) Rear Seat Up/Down	19.6/41.4	19.7/41.5

Colors

Interior Colors

Beige Black Dk. Blue Carmel Champagne Maroon

Citation Custom Interior*

All Models	(Bench) Custom Vinyl	•	•	•	•	•
	(Bench) Custom Cloth	•	•	•	•	•
	(Bucket) Custom Vinyl	•	•	•	•	•
	(Bucket) Custom Cloth	•	•	•	•	•

Citation

All Models	(Bench) Vinyl	•	•	•	•	•
	(Bench) Sport Cloth*	•	•	•	•	•
	(Bucket) Vinyl	•	•	•	•	•
	(Bucket) Sport Cloth*	•	•	•	•	•

Exterior Colors

Beige		•	•	•	•	•
Black		•	•	•	•	•
Dark Blue (Metallic)		•	•	•	•	•
Light Blue (Metallic)		•	•	•	•	•
Light Brown (Metallic)		•	•	•	•	•
Medium Brown (Metallic)		•	•	•	•	•
Champagne (Metallic)		•	•	•	•	•
Dark Green (Metallic)		•	•	•	•	•
Maroon (Metallic)		•	•	•	•	•
Burnt Orange (Metallic)		•	•	•	•	•
Red		•	•	•	•	•
Silver (Metallic)		•	•	•	•	•
White		•	•	•	•	•
Bright Yellow		•	•	•	•	•

Custom Two-Tone Colors

Beige/Maroon (Metallic)		•	•	•	•	•
Beige/Red		•	•	•	•	•
Black/Silver (Metallic)		•	•	•	•	•
Light Blue/Dark Blue (Metallic)		•	•	•	•	•
Light Brown/Metallic/Beige		•	•	•	•	•
Light Brown/Metallic		•	•	•	•	•
Medium Brown (Metallics)		•	•	•	•	•
Champagne/Black		•	•	•	•	•
Burnt Orange (Metallic)/Beige		•	•	•	•	•
Silver/Dark Blue (Metallics)		•	•	•	•	•
Silver/Maroon (Metallics)		•	•	•	•	•

*Optional at extra cost

Standard Interior Trim Guide

Vinyl interior and bench seat standard on all models. All other combinations are available options, including Sport Cloth, Custom Cloth, Custom Vinyl, and bucket seats.

Standards



COMPUTER
COMMAND
CONTROL

Every 1981 gasoline-engined Chevrolet passenger car includes a sophisticated, thoroughly tested on-board computer as standard equipment. It

gives you the cleanest-burning gasoline engines in Chevrolet's history. And points the way to impressive fuel economy.

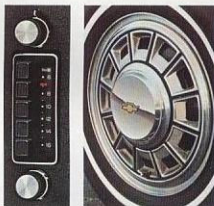
That's just the beginning of the benefits. By continuously monitoring your engine's functions, Computer Command Control adjusts the performance of your car under all operating conditions — continuously — as you drive. Air-fuel mixtures are constantly adjusted to driving conditions, and the system compensates for altitude, barometric pressure and temperature changes. And, when compared to last year, the system actually reduces the number of recommended maintenance operations.

We believe that the Computer Command Control will enable the Chevrolet Motor Division to achieve the highest average fuel economy in its history* and, at the same time, reduce exhaust emissions to the lowest level in Chevrolet history.

Computer Command Control is also self-diagnostic. In fact, should a malfunction occur, the system will help diagnose it and pinpoint the problem for your Chevrolet service technician. Another benefit of Computer Command Control is that it is covered by the 5-year/50,000-mile emission system warranty. Ask your dealer for details.

*This is a measure of Chevrolet Motor Division's fuel economy based on a projected sales-weighted average of the EPA combined mileage estimates for all Chevrolet passenger cars produced during this model year.

Delco AM Push-Button Radio may be deleted for credit; includes dual front speakers and front fender-lead antenna. **Styled Steel Wheels** add a note of elegance. **Column-**



Mounted Control gives easy access to turn signals, headlight dimmer and windshield wiper/washer operation.

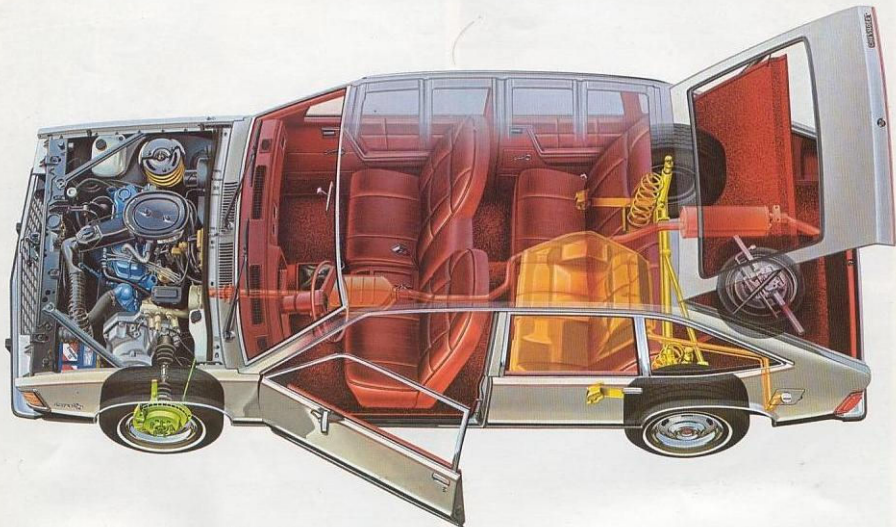
• **Sliding Door Locks** are flush-mounted, color-coded to show at a glance when locked.

Standard Exterior Equipment:

Body-color bumper end caps • Roof drip moldings • Rocker panel moldings • Wheel opening moldings • Styled wheels with hubcaps standard. Optional wheelcover shown above. Rear deck and quarter panel pin striping • Rearview mirror • Dual-speed electric windshield wipers • Unitized body construction with acrylic finish • Double-panel door, hood and rear hatch construction • Extensive anti-corrosion treatments.

Standard Interior Equipment:

Color-keyed seat and front shoulder



- belts • Cigarette lighter • Glove compartment lock • Day/night inside rearview mirror • Left- and right-hand front door dome lamp switches
- Roof center dome light • Interior hood release • Cut-pile carpeting
- Inertia-type folding front seatback locks (Coupe only) • Cloth headlining
- Front door padded armrest • Folding rear seat • Full molded front seat construction • Front seat belt system with door-actuated retractors • Built-in blended air heater and defroster system • Flow-thru ventilation system
- Fully inflated compact spare tire
- Foot-operated parking brake

Standard Power Team

- Equipment:** Transverse-mounted 2.5 Liter (151 Cu. In.) 2-Bbl. I4 engine
- Four-speed fully synchronized manual transmission (fourth gear is overdrive) • Engine coolant recovery system • High Energy Ignition system
 - Sealed side-terminal Delco Freedom II battery is maintenance-free.
 - P185/80R-13 glass-beilded radial ply tires • 15-inch by 5.5-inch wheels (except spare) • Rack-and-pinion steering • Wheel bearings are permanently lubricated • Trailing arm and beam rear suspension with coil springs and integral stabilizer bar

- Front disc/rear drum brake system with diagonal dual braking circuits
- Vented front disc brake rotors and finned rear brake drums • Disc brake audible wear sensors • Delcotron

- generator with built-in solid-state regulator • Thermostatically controlled electric fan for engine cooling • Quiet hydraulic valve lifters
- 14-gallon fuel tank.

Power Teams

Engines	Displacement (cu. in.)	Ordering Code	Transmissions	
			4-Speed Manual (1)	Automatic (2)
All states including California				
2.5 Liter 2-Bbl. I4 Std. (A)	151	LW9	Std.	EC
2.8 Liter 2-Bbl. V6 (S) (B)	173	LE2	Std.	EC
*2.8 Liter 2-Bbl. V6 (H.O.) (S) (B)	173	LH7	Std.	EC

Std. — Standard EC — Extra Cost. H.O. — High Output. (1) With floor-mounted shift control

(2) Column-mounted standard; floor mounted with optional console.

(S) Power Brakes required. *Available only with X-11.

PRODUCED BY GM: (A) PONTIAC MOTOR DIVISION.

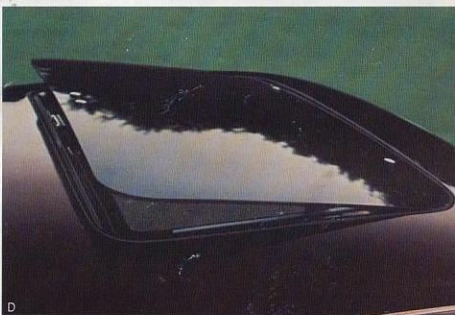
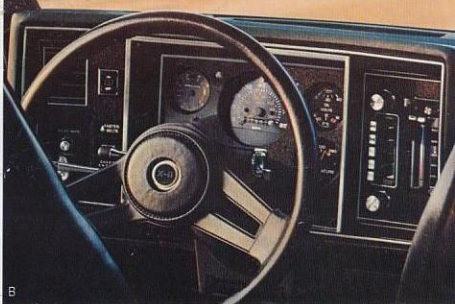
(B) CHEVROLET MOTOR DIVISION.

Long Recommended Service Intervals.*

Engine Oil	12 months or 7,500 miles
Oil Filter	12 months or 7,500 miles,
	every 15,000 miles thereafter
Carburetor Air Filter	Up to 30,000 miles
Spark Plugs	30,000 miles
Chassis Lubrication	12 months or 7,500 miles
Auto. Trans. Fluid	Every 100,000 miles

*See the Owner's Manual for conditions requiring more frequent intervals.

Exterior Dimensions (inches)	2-Door Hatchback	4-Door Hatchback
Wheelbase	104.9	104.9
Length (overall)	176.7	176.7
Width (overall)	68.3	68.3
Height (loaded)	53.5	53.5
Tread — Front	58.7	58.7
Tread — Rear	57.0	57.0



Options

A. Reclining Seats. Choose either or both reclining passenger and new reclining driver seat back. A real comfort on long trips.

B. X-11 Sport Steering Wheel and Tach. These are just two of the special features offered in the optional X-11 model. See below for more detail.

C. Electric Rear Window Defogger. Helps keep rear window free of mist and frost.

D. Sunroof. Glass panel is hinged at front. Pops up for ventilation, or remove it entirely and store in handy storage bag.

E. Sport Mirrors, Power Windows. Sport mirrors are offered as left-hand remote control and right-hand convex manual, and as part of the X-11 Package.

F. Delco Radio Equipment. A wide choice of options is available, including: AM/FM, AM/FM stereo, AM/FM stereo with 8-track tape player, AM/FM stereo with cassette tape player. A rear seat speaker and dual rear seat speakers also optional. Power antenna optional.

G. Tires and Wheels. Available: P185/80R-13 glass-belted radial ply white-stripe. Steel-belted radial ply tires: P185/80R-13 blackwall, P185/80R-13 white-stripe, P205/70R-13 white-stripe or white-letter (P205/70R-13 tires require Sport Suspension). Wheel equipment: full wheel covers, Rally wheel trim with rings, wheel trim rings (not available with full wheel covers), wire wheel covers.

Special packages available.

X-11. Includes bucket seats, high output V6 engine, power brakes, special hood with air inlet, body-color bumpers with rub strips, decals, rear deck spoiler, body-color sport mirrors, sport steering wheel, special instrumentation with tachometer, instrument panel molding with Sport Suspension nameplate. Black accents on grille, headlamp bezels, tail lamps, rear pillars and window frames. Sport Suspension for X-11 includes 14 x 6.5 aluminum alloy wheels and P215/60R steel-belted radial ply tires.

Sport Suspension includes special front stabilizer and shock absorber valving, plus higher rate springs and tuned bushings. Requires P205/70R steel-belted tires.

Custom Interior Trim includes deluxe seat and side trim materials, rear seat ashtrays, color-keyed seat adjuster covers, special load area carpet, deluxe steering wheel, deluxe acoustical package and color-keyed load area sidewall trim.

Deluxe Exterior Trim includes full wheel covers, deluxe bright-accented tail lamps with amber turn signals, bright side window reveal moldings, dual striping on upper body sides and fenders.

Other options available:

Air conditioning • Power brakes (required with V6 engine or air conditioning) • Front and rear bumper guards • Front and rear bumper rub strips • Roof carrier (not available with sunroof) • Electric clock • Console (requires bucket seats) • Heavy-duty cooling (not available in California with V6 and air conditioning) • Front and rear color-keyed floor mats • Gage package with electric clock (not available with special instrumentation) • 70-amp Delcotron generator (included with air conditioning) • Tinted glass, all windows • Halogen Hi-Beam Headlamps • Dual horns • Special instrumentation (not available with electric clock or gage package) • Auxiliary lighting includes luggage compartment, underhood, glove compartment, ashtray and courtesy lights, headlamps-on warning buzzer • Power door lock system • Power windows • Left-hand remote control mirror • Moldings: body side (included with Custom Two-Tone paint), side window reveal (included with Deluxe exterior), door edge guard • Custom Two-Tone paint (includes body side moldings and body pin striping) • Quiet Sound/rear compartment decor includes color-keyed load area sidewall trim • Bucket seats • Automatic speed control with resume speed (requires automatic transmission and power brakes) • Power steering (required with air conditioning) • Comfortilt steering wheel, sport steering wheel (included with X-11 package) • Body pin striping (included with Custom Two-Tone paint or Deluxe exterior) • Heavy-duty front and rear suspension • Automatic transmission • Remote swing-out side windows • Intermittent windshield wiper system.

Safety features

Occupant Protection

Manual lap belts with push-button buckles for rear and front passenger positions • Manual lap/shoulder belts for driver (with reminder light and buzzer) and front passenger.

• Energy-absorbing steering column • Passenger guard door locks • Safety door latches and stamped steel hinges • Folding seat back latches • Energy-absorbing padded instrument panel and front seat back tops • Laminated windshield/tempered side and rear glass • Safety armrests • Identification symbols for controls and displays.

Accident Avoidance

Side marker lights and reflectors • Parking lamps that illuminate with headlamps • Four-way hazard warning flasher • Backup lights • Lane change feature in direction signal control • Windshield defrosters, washer and dual-speed wipers • Vinyl-edged inside mirror • Outside rearview mirror • Dual master cylinder brake system with warning light • Starter safety switch • Dual-action safety hood latches.

Anti-Theft

Anti-theft ignition key reminder buzzer • Anti-theft steering column lock.

The GM Continuous Protection Plan.

**Continuous
Protection
Plan**

GM

It offers service protection in addition to that provided by GM's new vehicle limited warranty. Ask your dealer about it. Coverage available only in the U.S.A. and Canada for the 1981 model year.

A Word About Engines. Citations are equipped with GM-built engines produced by various divisions. Please refer to the Citation Power Team information on page 13 of this catalog, or see your dealer for details.

A word about assembly, components and optional equipment in these Chevrolets.

The Chevrolets described in this catalog are assembled at facilities of General Motors Corporation operated by the GM Assembly Division. These vehicles incorporate thousands of different components produced by various divisions of General Motors and by various suppliers to General Motors. From time to time during the manufacturing process, it may be necessary, in order to meet public demand for particular vehicles or equipment, or to meet federally mandated emissions, safety and fuel economy requirements, or for other reasons, to produce Chevrolet products with different components or differently sourced components than initially scheduled. All such components have been approved for use in Chevrolet products and will provide the quality performance associated with the Chevrolet name.

With respect to extra cost optional equipment, make certain you specify the type of equipment you desire on your vehicle when ordering it from your dealer. Some options may be unavailable when your car is built. Your dealer receives advice regarding current availability of options. You may ask the dealer for this information. GM also requests the dealer to advise you if an option you ordered is unavailable. We suggest that you verify that your car includes the optional equipment you ordered or, if there are changes, that they are acceptable to you.





**Front-wheel drive
makes Chevy Citation
one of man's best friends.**

