

1976 Concours & Nova

CHEVROLET





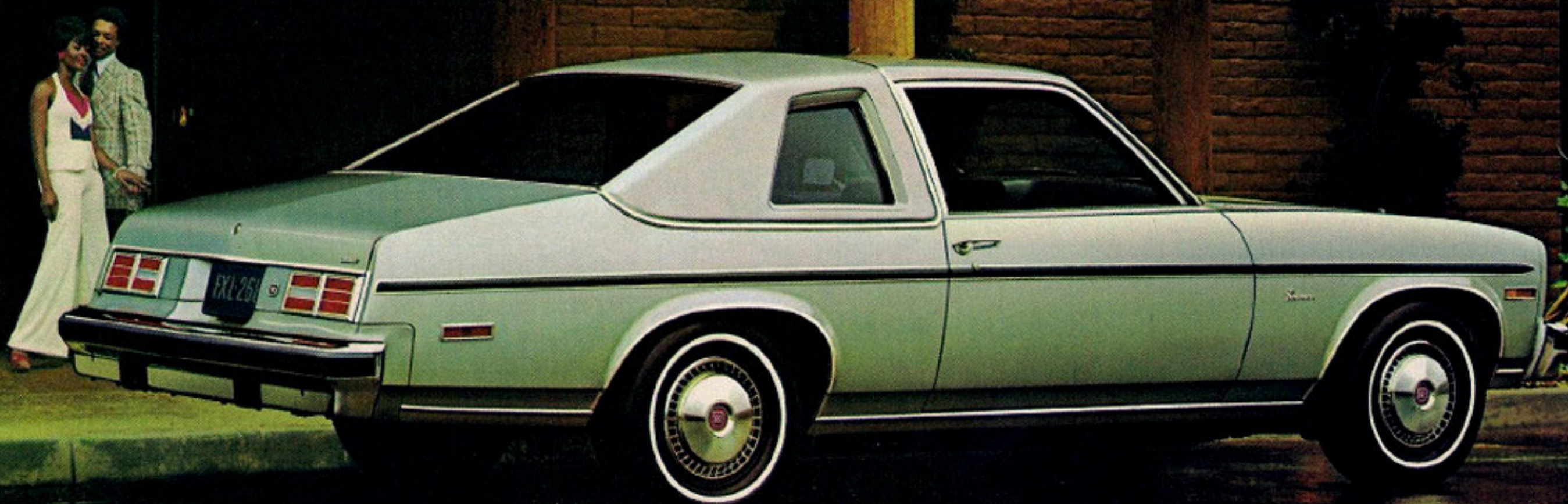
Concoours Coupe. Shown with available wide-back reclining front seats, remote-control outside mirror and white stripe tires.



Concoours Hatchback Coupe. Shown with available body side moulding and white stripe tires.



Concours 4-Door Sedan. Shown with available wide-back reclining front seats, tinted glass, Custom Appearance Group, remote-control outside mirror and white stripe tires. (Also shown on front cover.)



Concours Coupe. Shown with available Cabriolet vinyl roof, Custom Appearance Group and white stripe tires.

Introducing the 1976 Concours.

A luxurious Chevy compact with a plain Chevy price.



This year the search for automotive economy is definitely on, and people are going back to smaller cars in bigger numbers. Wouldn't it be great if you could get into something small, luxurious and affordable?

Well, Chevy has it: the 1976

Concours. A practical approach to compact luxury. Who'd have thought six cylinders and two seats could look this good? We worked long and hard to make the lines right, and then embellished them just enough with the appropriate chrome and bright-metal accents. Including that distinctive upright hood ornament.

But the Concours styling story needn't end there. Feel free to order from a long list of appearance options, such as the Cabriolet padded vinyl top shown on the preceding page. It's available on '76 Concours and Nova coupe models except hatchbacks.

Now get in and see what the standard Concours interior does for you. The deep-cushion comfort. The plush trim. The rosewood vinyl accents that highlight the upper door panels, instrument panel and steering wheel. Notice, too, that the steering wheel and steering column are colour-coordinated. Those fully carpeted lower door panels have handy map pockets in them. And Concours is the first Chevy compact to provide a fold-down front centre armrest. Check for a cigarette lighter, glovebox light and other amenities. They're all there.

If that isn't enough, you can always order a '76 Concours interior

more custom-fitted to your taste. Available options include high-pile deluxe carpeting, AM, AM/FM and stereo radio equipment, and the individual wide-back front seats shown at the bottom.

Now you might want to flip back to the options section of this catalogue for a detailed look at what's available. That is, if you can look at the picture below of the standard Concours interior and say that anything's missing. Maybe all that's missing is you.

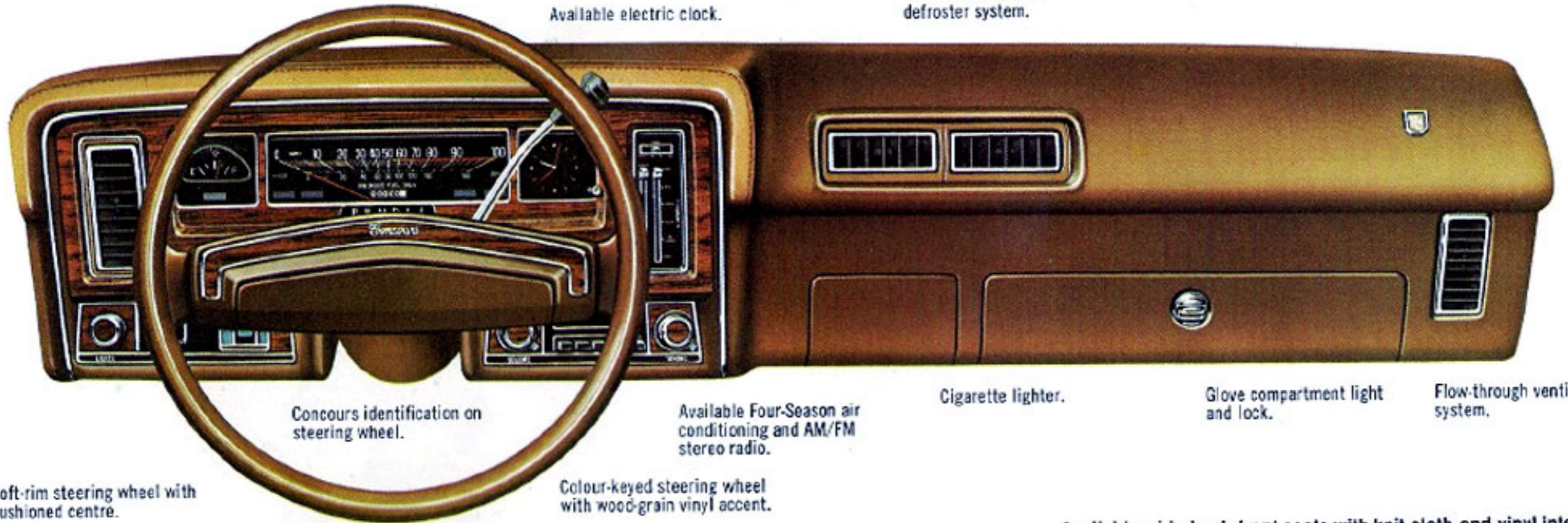
'76 Concours. The new Chevy compact as desirable as it is affordable. Which, nowadays, is saying a lot.



Instrument cluster with rosewood vinyl accents, smoked lenses, bright framing.

Available electric clock.

Built-in heater and defroster system.



Concours identification on steering wheel.

Available Four-Season air conditioning and AM/FM stereo radio.

Cigarette lighter.

Glove compartment light and lock.

Flow-through ventilation system.

Soft-rim steering wheel with cushioned centre.

Colour-keyed steering wheel with wood-grain vinyl accent.

Available wide-back front seats with knit cloth-and-vinyl interior.





Nova Coupe. Shown with available full wheel covers, deluxe bumpers, bumper guards and white stripe tires.



Nova Hatchback Coupe. Shown with available swing-out rear quarter windows, Exterior Decor, wheel opening mouldings, full wheel covers, white stripe tires, deluxe bumpers and bumper guards.



Nova 4-Door Sedan. Shown with available Exterior Decor, full wheel covers, tinted glass, white stripe tires, deluxe bumpers and bumper guards.



Nova SS Coupe. Shown with available vinyl roof cover, bucket seats, deluxe bumpers, bumper guards and white stripe tires.

1976 Nova. Dedicated to all the Novas before it.

The latest edition of Chevy's basic compact has a lot to live up to. Over the years, a lot of people have supported what we call the Nova fundamentals. So we'd be foolish to change them.

That's why the 1976 Nova, like all Novas before it, is sensibly sized and sensibly priced. That's also why we've kept it easy to drive, easy to park and easy to get into. And why we've built it as solidly as we can.

The successful Nova formula also dictates an efficient six-

cylinder engine: our 1976 version is just that.

Naturally, we've made minor changes each year — without straying from the Nova basics. For example, this year we managed to refine the brakes, the fuel and exhaust system mountings a little.

Inside the car, we added bright new colours and trim materials to please the eye and the

touch. And we made numerous minor adjustments (things like new instrument panel knobs). Definitely not earth-shaking modifications, but typical of Nova attention to quality.

All things considered, the basic '76 Nova is a very complete car. It even offers a long list of available options, such as our Nova SS package, illustrated on the preceding page. Or our available Custom Interior, illustrated at the bottom. There's also a full selection of radios, stereo equipment and tape

players. A full complement of power options, such as power door locks and power windows. Plus styling and interior embellishments you can specify at will. Sample them all in the Nova option descriptions at the back of this catalogue.

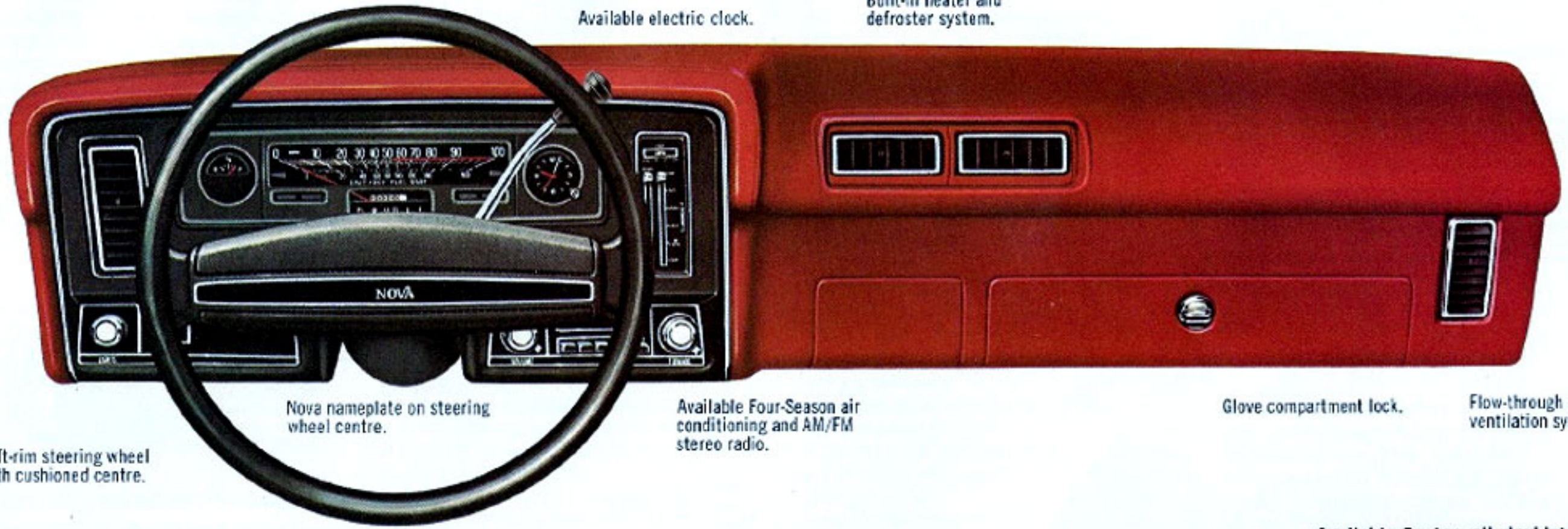
Then order Nova at your Chevy dealer's. It's the 1976 version of the compact that's looking better all the time.



Speedometer reads to 100 mph with metric equivalents.

Available electric clock.

Built-in heater and defroster system.



Nova nameplate on steering wheel centre.

Available Four-Season air conditioning and AM/FM stereo radio.

Glove compartment lock.

Flow-through power ventilation system.

Soft-rim steering wheel with cushioned centre.

Available Custom all-vinyl interior.



What you get.

Every '76 Concours and Nova includes a host of standard equipment. We've listed much of it here.

To help you save money.

• A group of engineering improvements, introduced with 1975 Novas, are designed to give you cleaner air, overall operating economy, quick starts, faster warm-ups, fewer and simpler recommended tune-ups, and more miles between oil changes and chassis lubes*. These engineering improvements include High Energy Ignition — up to 35% hotter spark to the plugs than with conventional breaker points and condenser system, which means responsive ignition performance; Catalytic



Converter — takes over most of the emissions control so engines can be tuned for smooth, responsive, efficient performance; Carburetor Outside Air Induction — responsive engine performance because cooler, denser air is fed into the carburetor from outside the car rather than from under the hood; Early Fuel Evaporation — improves performance by using exhaust gases to

Concours.

- Upright 3-dimensional hood ornament.
- Bright wheel opening, side window, roof drip, fender and body sill mouldings.
- Deluxe bumpers with black bumper impact strips.
- Front and rear bumper guards.
- Full wheel covers.
- Luxurious new interior trim. Front bench seat includes fold-down centre armrest.
- Choice of three new knit cloth-and-vinyl interiors in black, buckskin or firethorn; or two new all-vinyl interiors in buckskin or firethorn; with white also a choice for coupe and hatchback only.
- Colour-keyed steering wheel with wood-grain vinyl accent and bright outline ring.
- Colour-keyed steering column.
- Instrument cluster with wood-grain vinyl accents, smoked lenses, additional bright framing.
- High-level acoustic package.
- Glove compartment light.
- Right-hand front door light switch.
- Cigarette lighter.
- Map pockets on front doors, carpeted lower portions, wood-grain vinyl door inserts.
- Rear doors (4-door sedan) with padded armrests and integral ashtrays, door pull handles.

Nova.

- Amber parking light lenses.
- Dark argent headlamp bezels with bright trim moulding.
- Hubcaps.
- Choice of three cloth-and-vinyl colours: black, buckskin or firethorn;

- Exterior colours: light blue metallic, dark blue metallic, firethorn metallic, mahogany metallic, lime green metallic, cream, bright yellow, medium orange, buckskin, saddle metallic, black, antique white, silver, dark green metallic.

Plenty of comfort and convenience.

- Flow-through ventilation system.
- Built-in heater and defroster system.
- Left-hand front door light switch.
- Glove compartment door lock.
- Hatchback folding rear seat for over 28 cubic feet of load space and more than six feet of flat floor.
- Cut-pile carpeting.
- Load floor carpeting (hatchbacks).
- Power brakes standard with all V8 models.
- Full foam front and rear seats.

The size inside.

• Sedans: Head room — front, 39.3"; rear, 36.6". Hip room — front, 55.9"; rear, 54.9". Shoulder room — front, 56.6"; rear, 56.7". Leg room — front, 41.7"; rear, 35.3". Usable luggage space — 13.0 cu. ft.

• Coupes: Head room — front, 38.3"; rear, 36.6". Hip room — front, 55.3"; rear (coupes), 55.0"; (hatchback coupes), 44.8". Shoulder room — front, 56.6"; rear, 55.3". Legroom — front, 41.7"; rear, 33.4". Usable luggage space — (coupes), 14.2 cu. ft.; (hatchback coupes, rear seat folded), 28.4 cu. ft.

Engines and transmissions.



- Quiet hydraulic valve lifters.
- Coolant recovery system helps prevent coolant loss.
- Delcotron generator.
- Sealed side-terminal energizer-type battery helps prevent corrosion build-up on the terminals. New, lighter weight, higher output design for '76 for increased electrical reserve.
- 3-Speed fully synchronized manual transmission.

Power teams.

Engine	Net HP Rating	3-Speed Manual*	4-Speed Manual	Turbo Hydraulic
250 1-bbl Six, 4.1 litre	105	Std.*	—	Avail.
305 2-bbl V8, 5.0 litre	140	Std.*	—	Avail.
350 4-bbl V8, 5.7 litre	165	—	Avail.	Avail.

*Floor-mounted shift lever available.

pre-heat incoming fuel/air mixtures during warm-up.

- Long intervals between recommended service help save you money as you operate a '76 Concoors or Nova.

Extended Service Intervals*		
	1976	Before 1975
Spark plugs	22,500 miles	6000 miles
Engine oil	6 months or 7500 miles	4 months or 6000 miles
Oil filter	First 7500 miles; then every 15,000 miles	First 6000 miles; then every 12,000 miles
Chassis lubrication	6 months or 7500 miles	4 months or 6000 miles
Transmission fluid	60,000 miles	24,000 miles

*With use of unleaded fuel. Check complete details in the Owner's Manual.

Exterior/interior features.

Cabriolet Versions of Concoors and Nova Coupes.

- Padded vinyl quarter roof cover in choice of colours to harmonize with exterior colour; distinctive rear quarter window treatment; bright windshield, rear window, roof drip and vinyl roof surround mouldings.

SS Versions of Nova Coupe and Hatchback Coupe.

- Black grille with unique diamond-mesh pattern and "Nova SS" emblem; black headlight bezels and side window frame mouldings; distinctive lower body side striping; Rally wheels with centre hubs and trim rings; dual black sport mirrors; horizontal parking lights with clear lenses; "Nova SS" decals on fenders and rear end panel; bright roof drip mouldings; 4-spoke sport steering wheel; heavy-duty suspension.

or three all-vinyl: buckskin, blue or firethorn. For hatchback, choice of the all-vinyl only.

- Black soft vinyl steering wheel cover and black steering column.

Concoors and Nova.

- Rich new bright chrome front grille; new front end styling.

For your safety and security.

Occupant protection.

- Seat belts with pushbutton buckles for all passenger positions.
- Two combination seat and inertia reel shoulder belts for driver and right front passenger (with reminder light and buzzer).
- Energy-absorbing steering column.
- Safety steering wheel.
- Passenger-guard door locks.
- Safety door latches and hinges.
- Folding seat back latches.
- Energy-absorbing padded instrument panel.
- Contoured windshield header.
- Thick-laminate windshield.
- Safety armrests.
- Cargo guard (except hatchback coupes).
- Contoured roof inner panel.

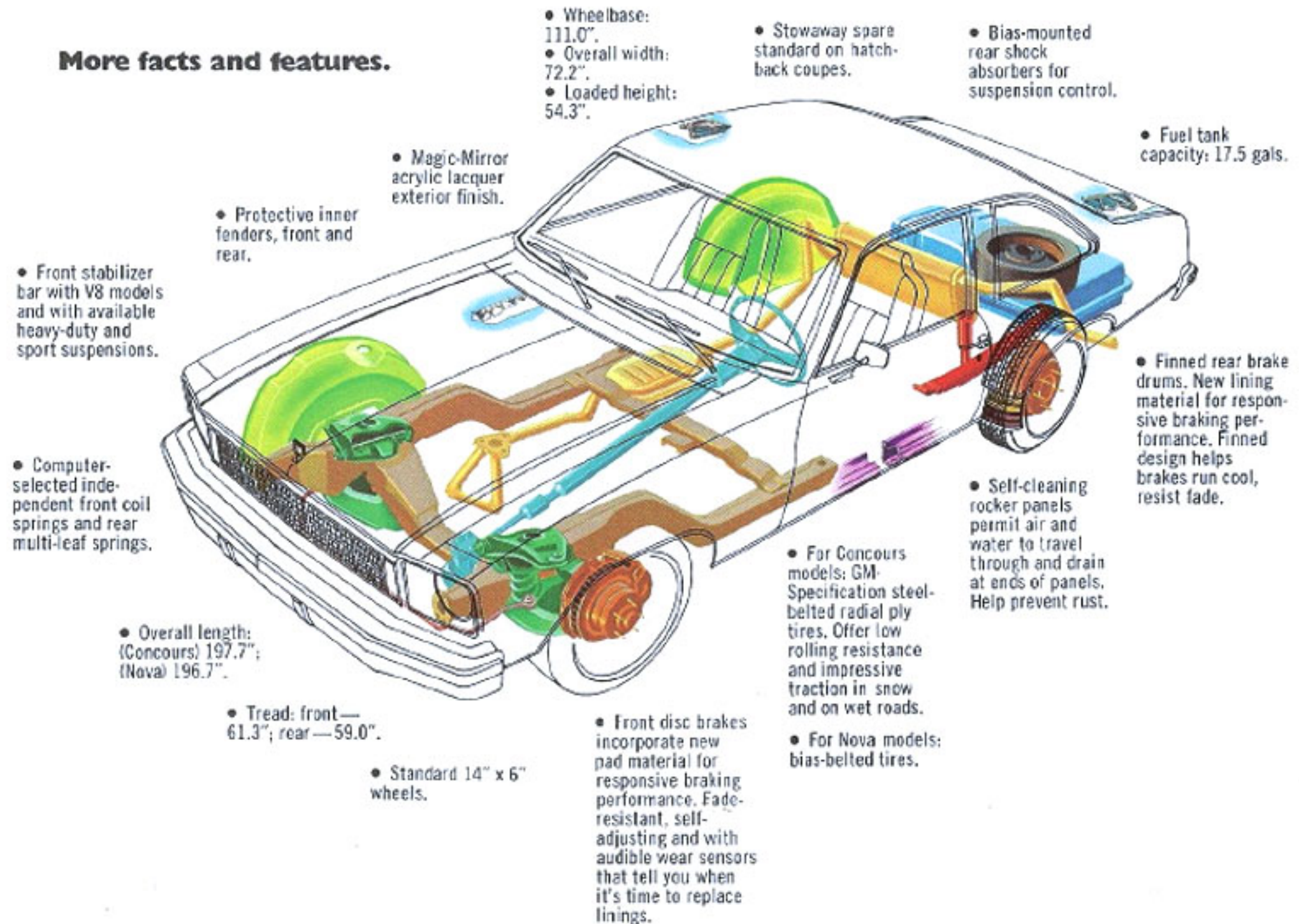
Accident prevention.

- Side marker lights and reflectors.
- Parking lights that illuminate with headlights.
- Four-way hazard warning flasher.
- Lane-change feature in direction signal control.
- Back-up lights.
- Windshield defroster, washers and dual-speed wipers.
- Wide-view inside mirror (vinyl-edged, shatter-resistant glass and deflecting support).
- Outside rearview mirror.
- Dual master cylinder brake system with warning light.
- Starter safety switch.
- Dual-action safety hood latch.

Anti-theft.

- Ignition key reminder buzzer.
- Steering column lock.

More facts and features.



What you can add.

Chevrolet offers a wide selection of available options to personalize your new car. Availability often depends on the model and other equipment selected. Your Chevrolet dealer can answer any questions.

For comfort and convenience.

- Wide-back individual front seats for Concours models. Driver's seat with 2-position adjuster; front passenger's seat with reclining feature.
- Custom Interior. With bench seat in all-vinyl or cloth-and-vinyl, or available all-vinyl bucket front seats. Bright accents on instrument panel, wood-grain vinyl accents, additional body insulation, right-hand front door jamb light switch, glovebox, 10" day-night mirror and cigarette lighter.



- Power door locks (left above).
- Power windows (right above).
- Four-Season air conditioning with improvements to increase comfort-level selection range. Easy-to-operate controls for heating, cooling, defrosting or defogging.
- Electric clock.
- Special instrumentation (tachometer, voltmeter, and temperature gauge plus an electric clock) available only in V8 models with centre console.
- Centre console with open storage compartments.
- Rear window defogger.
- Tinted glass.
- Auxiliary Lighting. Includes underhood, ashtray, courtesy lights; headlight reminder buzzer; right-hand front door light

switch; rear compartment light switch and (4-door sedans) rear door light switches.

- Comfortilt steering wheel. Adjusts to six different positions.
- Dual horns.
- Locking gas tank filler cap.
- Remote-control outside left-hand mirror.
- Twin sport mirrors. Both remote control. Match car's exterior colour.
- Visor vanity mirror.
- Trailing mirrors.
- Radios and tape players are Delco-designed for your new Concours or Nova. There's an AM radio, AM/FM radio, AM/FM stereo radio and a tape player system with either the AM or the AM/FM stereo radio. All stereo systems include an auxiliary speaker. All factory-installed radios include windshield antennas.
- Rear seat speaker.
- Space-saving Stowaway spare.



For appearance.

- Two-tone exterior finish. Not available with Nova SS.
- Interior Decor Package. (Std. in Concours, included with Custom Interior.) Includes bright instrument cluster accents, right-hand front door jamb light switch, glove compartment light, 10" day-night inside rearview mirror and cigarette lighter.
- Custom Interior. Not available in Concours. Includes Interior Decor Package plus deluxe door and sidewall trim, wood-grain vinyl accents and bright trim on instrument panel, cloth headlining, special sound insulation.
- Deluxe colour-keyed seat belts.
- Colour-keyed floor mats.
- Deluxe high-pile carpeting.

- Custom Appearance Group. Includes wide body side moulding and other mouldings. Available on Concours only.
- Exterior Decor Package. Includes body side mouldings and bright side window mouldings. Not available on Concours or SS.
- Soft padded vinyl roof cover.
- Lower body side pinstriping. Not available on Nova SS.
- Door edge guards.
- Deluxe front and rear bumpers. Include impact strips and bumper guards. Standard on Concours.
- Swing-out rear quarter windows. Not available on 4-door sedans.
- White stripe or white lettered tires.
- Full wheel covers.
- Wheel trim rings.
- Custom Styled urethane/steel wheels (shown below left).
- Rally wheels for Nova (shown below right).



- Colour-keyed Rally wheels, painted exterior body colour. Available only with Concours.
- Body side vinyl moulding with bright insert. Included in Exterior Decor Group.

Mechanical items.

- 3-Speed Turbo Hydra-matic transmission.
- High-altitude rear axle (3.08).
- Positraction. For added rear wheel traction.
- Econominder light. Tells when car is being driven in an economical range.



- Cruise-Master speed control maintains the speed selected by driver. Stepping on brake disengages control. Requires V8 with automatic transmission.



- Intermittent windshield wiper system. Ideal when continual wiper operation is not required.
- Heavy-duty suspension, front and rear. Particularly useful for trailering.
- Sport suspension. Includes 14" x 7" wheels, rear stabilizer bar.
- Class I (up to 2,000 lbs.) load-distributing, platform-type trailer hitch; also, trailer wiring harness. (Dealer-installed accessories.)
- Heavy-duty battery.
- Heavy-duty radiator.

The illustrations or descriptions in this catalogue do not necessarily show standard colours, materials and equipment. General Motors of Canada Limited reserves the right to make changes at any time without notice, in prices, colours, materials, equipment, specifications and models, and also to discontinue models. This right may be exercised without incurring any responsibility with regard to cars and trucks previously sold.
GENERAL MOTORS OF CANADA LIMITED,
OSHAWA, ONTARIO

