

1970 Chevrolet Nova

Have it your way.



Nova begins with some sizable advantages.

Not too small. Not too large. Which makes a lot of people happy.

Small enough to make long trips seem like gas economy runs. Big enough for up to six

adults and their luggage.

Small enough to get you in and out of the stingiest parking spaces. Big enough, with its wide stance, to keep an even keel in a cross-

wind, through the bends or over unkindly patches of pavement.

Isn't this what driving's all about? Making it right for you, just you. Even the price.

Nova's our lowest. And with it, another distinction, a choice of three standard engines—a Four, a Six and a 307 CID V8. Any other cars offer a line-up like that? No, none do.

For more power, a larger Six and bigger V8s are available. Match up your kind of transmission: 3-Speed fully synchronized or any of four more you can order including the

low-cost, no-clutch Torque-Drive.

Incidentally, some extra-cost Options and Custom Features are shown or described herein; your dealer has a complete list.

Cover: Nova Coupe with Custom Exterior Shown here: Nova Coupe



Nova comes two ways: coupe and sedan. Start with one kind, build one-of-a-kind.

Just having two models doesn't mean you can only buy two kinds of Nova.

It means you start with a basic coupe or sedan and tailor your Nova to fit you. Isn't that better than our trying to second-guess what you like?

For instance, you may want the inexpensive Exterior Decor: simulated louvers on front fenders; full-length body side molding with black vinyl insert; also includes bright window moldings on the coupe and bright roof drip molding on the sedan.

Want a little more? Go for the Custom Exterior: simulated front fender louvers with bright accents; rear panel trimplate; body sill and rear fender moldings.

Distinguishing the coupe are bright window moldings, full-length accent striping, bright

lower body moldings plus black lower body accent band with most exterior colors. The sedan features full-length body side molding with black vinyl insert.

Personal touches still abound. You can order full wheel covers, wheel trim rings, rally

wheels, and with the SS Coupe—sport wheels. Or, how about a vinyl roof cover—black, white, dark green, dark blue or dark gold, depending on exterior color selection.

You won't mind sharing with other Novas such important things as Body by Fisher,

Magic-Mirror acrylic lacquer finish (15 color choices—12 of them new for '70), lower profile fiberglass-belted tires and Nova's long list of safety features.

Along with a number of other things that make you glad your Nova's a Chevrolet.

Nova Sedan and Nova Coupe with Exterior Decor



Invent your own Nova; use our formulas.

You'd expect the higher priced cars to offer you a decorator's choice of interiors—colors, vinyls, fabrics, buckets, consoles, trim, etc. Well, Nova does, too. So get ready to be choosey and do your own color scheming.

Standard Interior. Proof that standard is not stark. Rich fabric and vinyl. Foam-cushioned

front seat. Front safety armrests; doors and sidewalls in matching vinyl. Color-keyed vinyl-coated rubber floor covering. Complete interior in gold, blue and dark green, or all-vinyl in black.

Special Interior Group. Brighten your day-and-night driving. Bright instrument cluster

framing, pedal trim and dome light rim; automatic light switches on both front doors and glove compartment light.

Custom Interior. You can order superbly tailored pattern cloth and vinyl over extra-thick molded-foam cushions.

Deep-twist carpeting, rear seat armrests,

special body and hood insulation and luggage compartment mat. Plus everything listed in the Special Interior Group. In gold, blue, dark green; or all-vinyl in black or sandalwood.

Once the interior's done, maybe you'll want to order such things as:

Entertainment. Our radios have hidden

windshield antennas, new deep-cone speakers and variable dial lights. (They dim with instrument lights.) New more compact stereo tape system available with pushbutton radios: AM or AM/FM/Stereo.

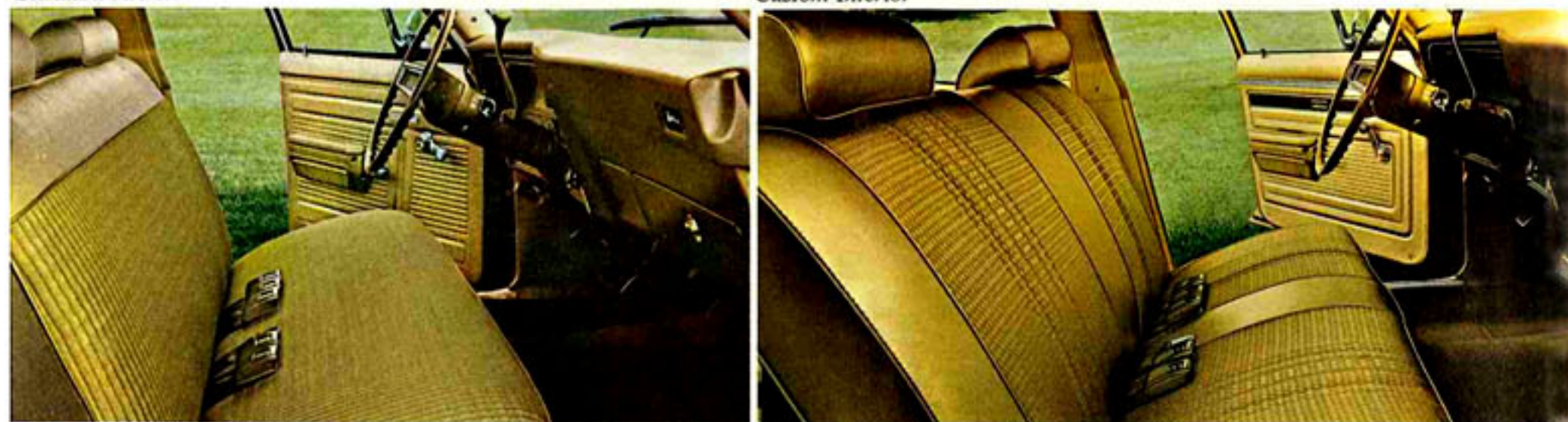
Comfort. Four-Season air conditioning for V8 models. Soft-Ray tinted glass.

Convenience. Variable-ratio power steering for Six and V8 models, power disc brakes, Auxiliary Lighting with windshield washer fluid monitor, rear window defroster. More on pages 10 and 11.

Special Wheel Covers. Specify special ribbed wheel covers a la Corvette.

Standard interior

Custom Interior



Special wheel covers



Custom Exterior rear trim



At bottom: Nova Sedan with Custom Exterior and full wheel covers



SS: the most Nova you can put together.

The Nova SS Coupe begins with enough horses to earn the name "SS". You get 300 hp in a Turbo-Fire 350 V8.

Name your transmission, we power-match it. Just say the word if you'd prefer the 4-Speed stick, Powerglide automatic or Turbo

Hydra-matic. Power disc brakes and special suspension are included with your SS power choice.

Your Nova SS needs no calling card. The black-accented grille wears its SS emblem boldly, as does the black-accented rear panel.

Simulated hood air-intakes and fender louvers are subtly garnished with bright accents.

Special hood insulation goes with it. E70 x 14 white-stripe tires and 14 x 7 wheels complete the SS package.

Anything left to be desired you'll find on

this page and those that follow.

Custom Interior. Shown below left is how the all-vinyl Custom Interior looks in black. Also can be ordered in sandalwood.

Bucket Seat Interior (available for coupe only). Includes all Custom Interior features

plus neatly fitted Strato-bucket seats in pliant vinyl. Black, gold or sandalwood.

Center Console. Can be ordered with bucket seats—and with all transmissions except Powerglide and Torque-Drive. And if you like to know what's going on, engine-wise,

order the special V8 instrumentation with the console.

Nova SS Rear Trim. Familiar view to most other cars. New taillight and backup light arrangement, plus black-accented rear panel and SS emblem.

Custom Interior



Bucket Seat Interior



Center console with special V8 instrumentation

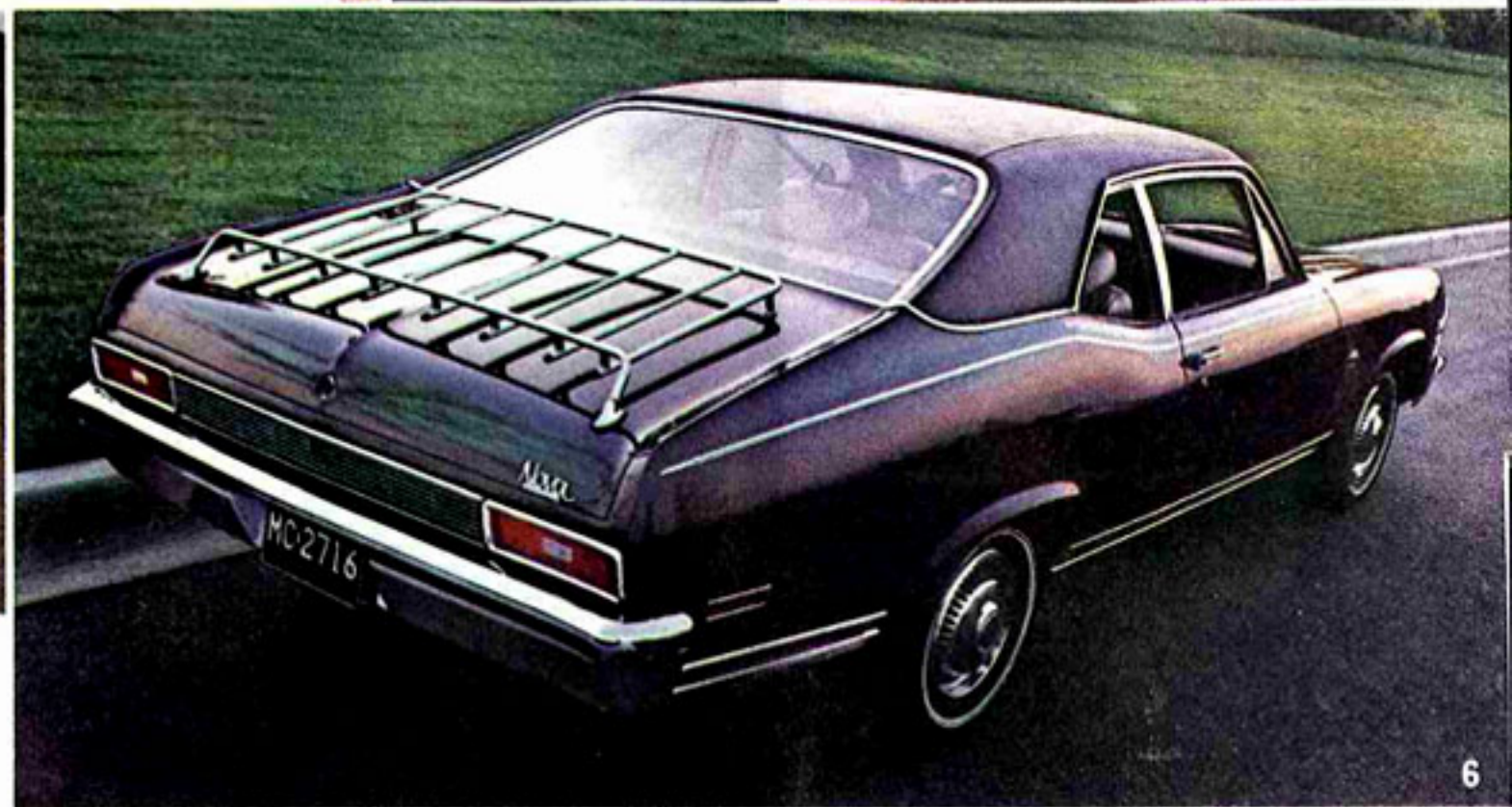


Nova SS rear trim



At bottom: Nova SS with Custom Exterior, sport wheels, vinyl roof cover





Few cars, at any price, offer as many ways to make your new car "just right" for you as Nova. And, as you can see below, that also goes for Options and Custom Features you can order.

1. RADIO. An entertaining companion on any trip. AM, AM/FM or AM/FM/Stereo pushbutton radios. All factory-installed radios feature new hidden antennas built into windshield glass, deep-cone speakers and new variable dial light.

STEREO TAPE SYSTEM. Your kind of music when you want it. New unitized system available with AM or AM/FM/Stereo radio. Cartridges are inserted through the radio dial, so that the system (with cartridge removed) is out of sight from prying eyes. Tape cartridge holder may be ordered.

2. FOUR-SEASON AIR CONDITIONING. Cools your car or warms it. Ride in comfort with windows closed. Shuts out noise, dust and pollen. Available with V8 models.

3. POWER DISC BRAKES (included with Nova SS package). Discs on front wheels reduce fading and shrug off moisture. Regular power brakes are also available.

4. TORQUE-DRIVE. Low cost. Eliminates the clutch pedal. Column-mounted shift lever. Can be ordered with 4- and 6-cylinder engines only.

5. VARIABLE-RATIO POWER STEERING. Makes power steering even more efficient. Fewer turns of the wheel required in full-turning situations without loss of highway "feel" on the straightaways. Not available with 4-cylinder models.

6. VINYL ROOF COVER. A REAR-DECK LUGGAGE RACK. A stylish vinyl roof cover can be ordered in black with any exterior color and in white, dark blue, dark gold or dark green with a number of body colors. The rear-deck luggage rack with gleaming chrome finish adds a sporty (and useful) touch to your Nova.

7. SPORT WHEELS. Special 14 x 7 wheels include deep inset trim ring and bright spokes. For SS Coupe only.

8. RALLY WHEELS. Can be ordered for coupe or sedan. Includes special wheel, center



cap and trim ring. 14 x 6 size with sedan and coupe without SS equipment; 14 x 7 with SS Coupe.

9. WINDSHIELD WASHER FLUID MONITOR. Now you can keep an eye on your washer fluid level without raising the hood. An instrument panel-mounted light glows red—when wipers are on—whenever it's time to fill up. Included when Auxiliary Lighting is ordered, which also includes: ashtray light, glove compartment light, courtesy lights, luggage compartment light, underhood light.

With the money you save buying a Nova, look at all the other good things you can afford.

NOVA FACTS AND FIGURES

ENGINE AND TRANSMISSION	3-Speed	4-Speed	Torque-Drive	Power-glide	Turbo Hydra-matic
90-hp Super-Thrift 153-Cu.-In. Four*	•		•		
140-hp Turbo-Thrift 230-Cu.-In. Six*	•		•	•	•
155-hp Turbo-Thrift 250-Cu.-In. Six	•		•	•	•
200-hp Turbo-Fire 307-Cu.-In. V8*	•		•	•	•
250-hp Turbo-Fire 350-Cu.-In. V8	•	•	•	•	•
300-hp Turbo-Fire 350-Cu.-In. V8**		•	•	•	•

*Standard. **Available only with Nova SS.

POWER TEAMS

All Six and V8 engines have Controlled Combustion System exhaust emission control—newly improved with transmission-controlled vacuum spark advance. Air Injection Reactor emission control system used on 4-cyl. engine. New "slim-line" tapered seat spark plugs now on Sixes.

STANDARD ENGINES

90-hp Super-Thrift 153 Four. Dependable, economical power with regular gas. Compression ratio: 8.5:1.

140-hp Turbo-Thrift 230 Six. Smooth, efficient overhead-valve Six. Regular gas. Compression ratio: 8.5:1.

200-hp Turbo-Fire 307 V8. Responsive power throughout the speed range. Has 2-barrel carb, automatic choke and uses regular gas. Compression ratio: 9.0:1.

300-hp Turbo-Fire 350 V8. Nova SS only. Power to spare with 4-barrel carburetor and 10.25:1 compression ratio. Premium fuel.

EXTRA-COST ENGINES

155-hp Turbo-Thrift 250 Six. Six-cylinder economy with more heft. Uses regular gas. Compression ratio: 8.5:1.

250-hp Turbo-Fire 350 V8. A bigger displacement V8 with increased power and torque. Uses regular gas. Compression ratio: 9.0:1.

STANDARD TRANSMISSION

3-Speed. All forward gears fully synchronized. Shift up or down without a clash. Shift lever column-mounted. On the floor at extra cost. Not available with Nova SS.

EXTRA-COST TRANSMISSION

4-Speed. Fully synchronized, close ratio, full-range gear selection. Floor-mounted shift lever. Can be specified with Turbo-Fire 350 V8 engines.

Torque-Drive. Low-cost answer to no-clutch driving. Shift manually or stay in gear without shifting in stop, slow and go traffic. Geared for fuel economy. Available with 4- and 6-cyl. engines only.

Powerglide automatic. Dependability-proved in millions of Chevrolets. So smooth you hardly know it's shifting.

Turbo Hydra-matic. Shifts automatically through three forward ranges or can be shifted manually up or down. Axle ratios match selected engine requirements.

QUALITY CONSTRUCTION DETAILS

Nova's rugged Fisher-built bodies are of all-welded steel construction firmly cushion-mounted to a sturdy front frame section for an exceptionally smooth and

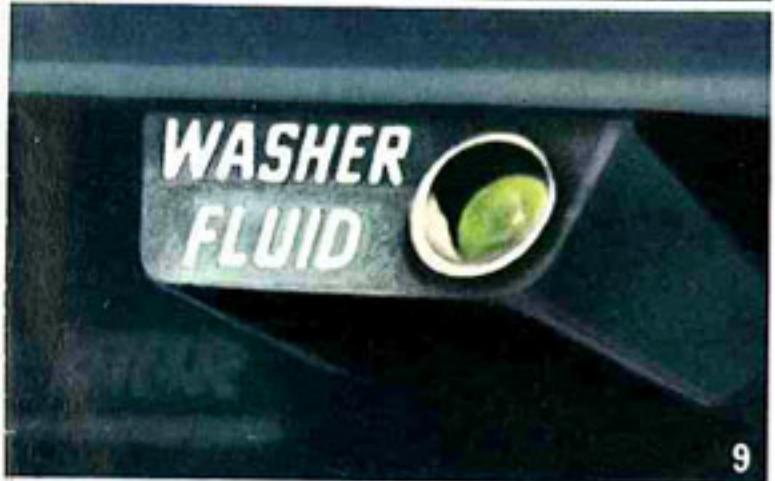
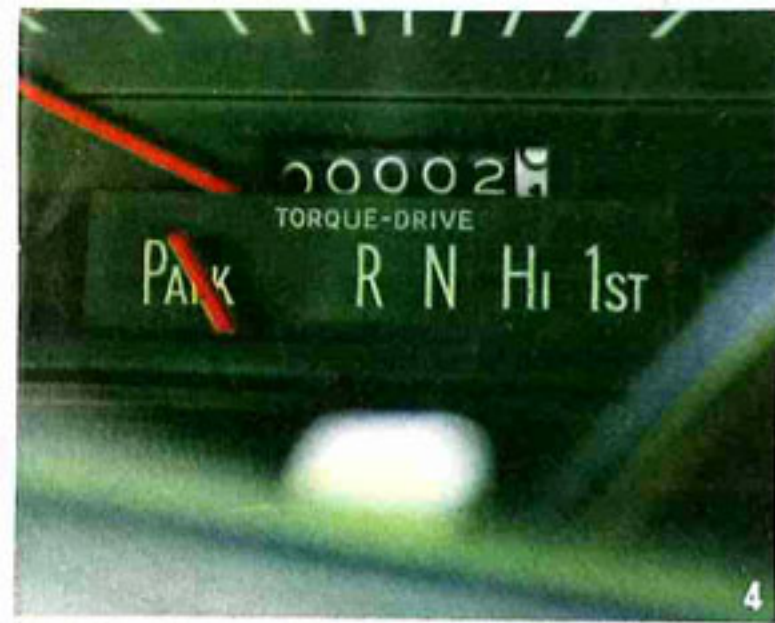
quiet ride. Flush-and-dry rocker panels (body structural members beneath doors are water-washed and air-dried to resist corrosion). Four inner fenders, further protect the underneath side. Heater, dual-speed electric windshield wipers and windshield washers are standard. Improved exhaust system includes all-welded joints and aluminized tailpipes. Safety-Master bonded brakes are self-adjusting. Electrical system is powered by Delcotron generator and Delco Eye energizer battery. Nova's computer-selected suspension with independent front coils, Mono-Plate single-leaf rear springs, refined rear shock absorber valving and spring mounting all contribute to Nova's riding comfort. All Novas are equipped with new fiberglass-belted tires on 14" wheels.

HERE'S WHAT WE MEAN BY NOVA'S "JUST RIGHT" SIZE

Wheelbase 111.0"	Luggage compartment (usable cu. ft.)
Width, overall . . . 72.4"	sedan 13.7
Length, overall . . 189.4"	coupe 14.6
Tread, front 59.0"	Steering ratio
rear 58.9"	(manual overall) . . . 28:1
Height, sedan . . . 53.9"	Fuel tank rated
coupe . . . 52.5"	capacity 18 gals.
	Tire size E78 x 14

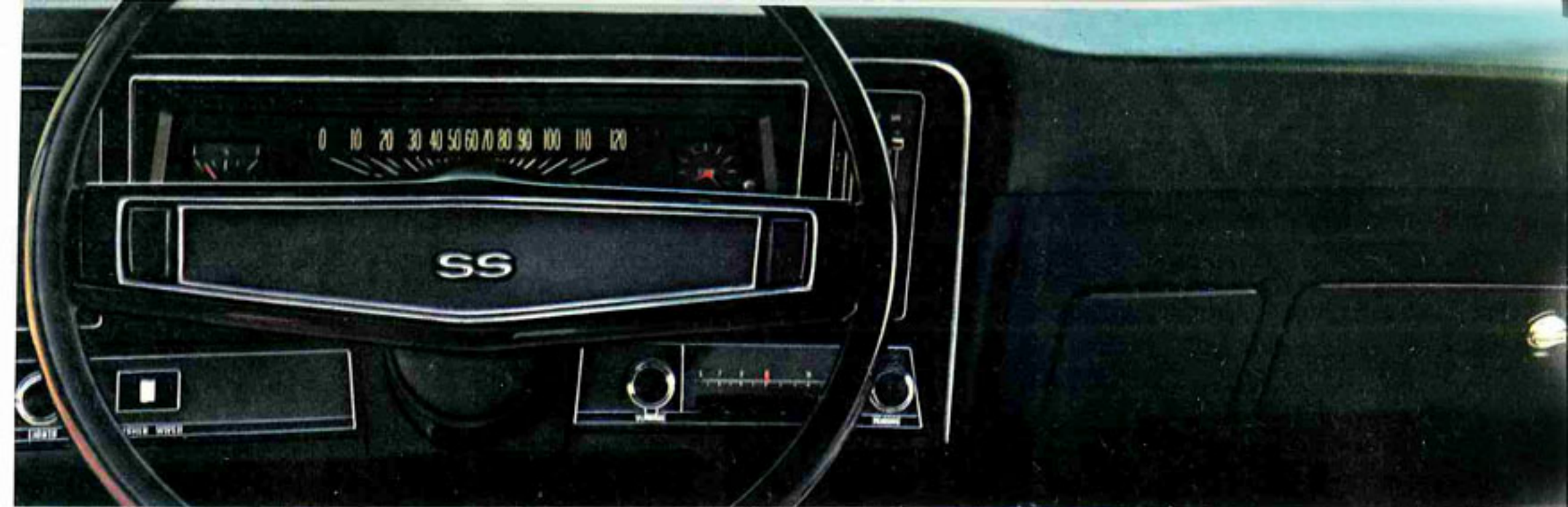
1970 CHEVROLET NOVA SAFETY AND SECURITY FEATURES

Occupant Protection Features: Seat belts with push button buckles for all passenger positions • Shoulder belts with pushbutton buckles—driver and right front passenger • Two front-seat head restraints • Energy-absorbing steering column • Passenger-guard door locks with forward-mounted lock buttons • Safety door latches and hinges • Folding seat back latches • Energy-absorbing instrument panel and front seat back tops • Contoured windshield header • Thick-laminate windshield • Padded sun visors • Safety armrests • Safety steering wheel • Cargo-guard luggage compartment • **Accident Protection Features:** Side marker lights and reflectors • Parking lights that illuminate with headlights • Four-way hazard warning flasher • Backup lights • Lane-change feature in direction signal control • Windshield defroster, washers and dual-speed wipers • Wide-view inside day-night mirror (vinyl-edged, shatter-resistant glass and deflecting support) • Outside rearview mirror • Fiberglass-belted tires with tire tread wear indicators • Dual master cylinder brake system with warning light • Starter safety switch • Dual-action safety hood latches. **Anti-Theft Features:** Anti-theft ignition key warning buzzer • Anti-theft steering column lock.



OTHER NOVA-TAILORED EXTRAS:

- Special V8 instrumentation for coupe with bucket seats and console. Includes: temperature, oil and fuel gauges and ammeter on console; tachometer, clock and low-fuel indicator on instrument panel • Soft-Ray tinted glass • Rear-window defroster • Child safety seat • Infant safety carrier • Removable deck-lid ski rack • Removable roof ski rack • Portable spotlight • Positraction rear axle—puts the power where the traction is • Engine block heater • Dual exhaust system • Heavy-duty battery • Heavy-duty radiator • Special suspension



How to assemble your made-to-order Nova.

Some people like to decide on engine and transmission first; others like to begin with exterior and interior colors and trim.

Models

- Coupe
- Sedan
- Nova SS package (coupe only)

Magic-Mirror Colors

Gobi Beige, Tuxedo Black, Astro Blue, Fathom Blue, Black Cherry, Desert Sand, Champagne Gold, Autumn Gold, Green Mist, Forest Green, Cranberry Red, Cortez Silver, Shadow Gray, Misty Turquoise, Classic White. (Plus seven two-tone combinations)

Interiors

- Standard interior
- Special Interior
- Custom Interior
- Strato-bucket seats
- Center console

Appearance Options

- Exterior Decor
- Custom Exterior
- Body side molding

Either way you'll find this quick checklist helpful. For further information, see your Chevrolet dealer. He'll give you prices and

- Vinyl roof cover (black, white, dark blue, dark gold, dark green)
- Rally Wheels
- Wheel covers
- White-stripe tires

Engines

- 90-hp Super-Thrift 153 Four (standard)
- 140-hp Turbo-Thrift 230 Six (standard)
- 155-hp Turbo-Thrift 250 Six
- 200-hp Turbo-Fire 307 V8 (standard)
- 250-hp Turbo-Fire 350 V8
- 300-hp Turbo-Fire 350 V8 (SS only)

Transmissions

- 3-Speed (standard, except for SS)
- 4-Speed
- Torque-Drive
- Powerglide automatic
- Turbo Hydra-matic

Some New Options for '70

- Variable-ratio power steering
- Stereo tape system; with AM or AM/FM/Stereo radio

model/equipment availability with various model combinations.

Putting you first, keeps us first.

- Sport wheels
- Windshield washer fluid monitor (included with Auxiliary Lighting)

Other Popular Extras

- Air conditioning
- Deck-lid luggage rack
- Child safety seat
- Infant safety carrier
- Deluxe seat and shoulder belts
- Soft-Ray tinted glass
- Operating Convenience Group: rear-window defroster, electric clock, remote-control rearview mirror
- Special V8 instrumentation
- Power brakes
- Power disc brakes
- Heavy-duty battery
- Heavy-duty radiator
- Heavy-duty Delcotron
- Dual exhaust system
- Positraction rear axle
- Engine block heater



All illustrations and specifications contained in this literature are based on the latest product information available at the time of publication approval. The right is reserved to make changes at any time without notice, in prices, colors, materials, equipment, specifications and models. Chevrolet Motor Division, General Motors Corp., Detroit, Michigan 48202.

