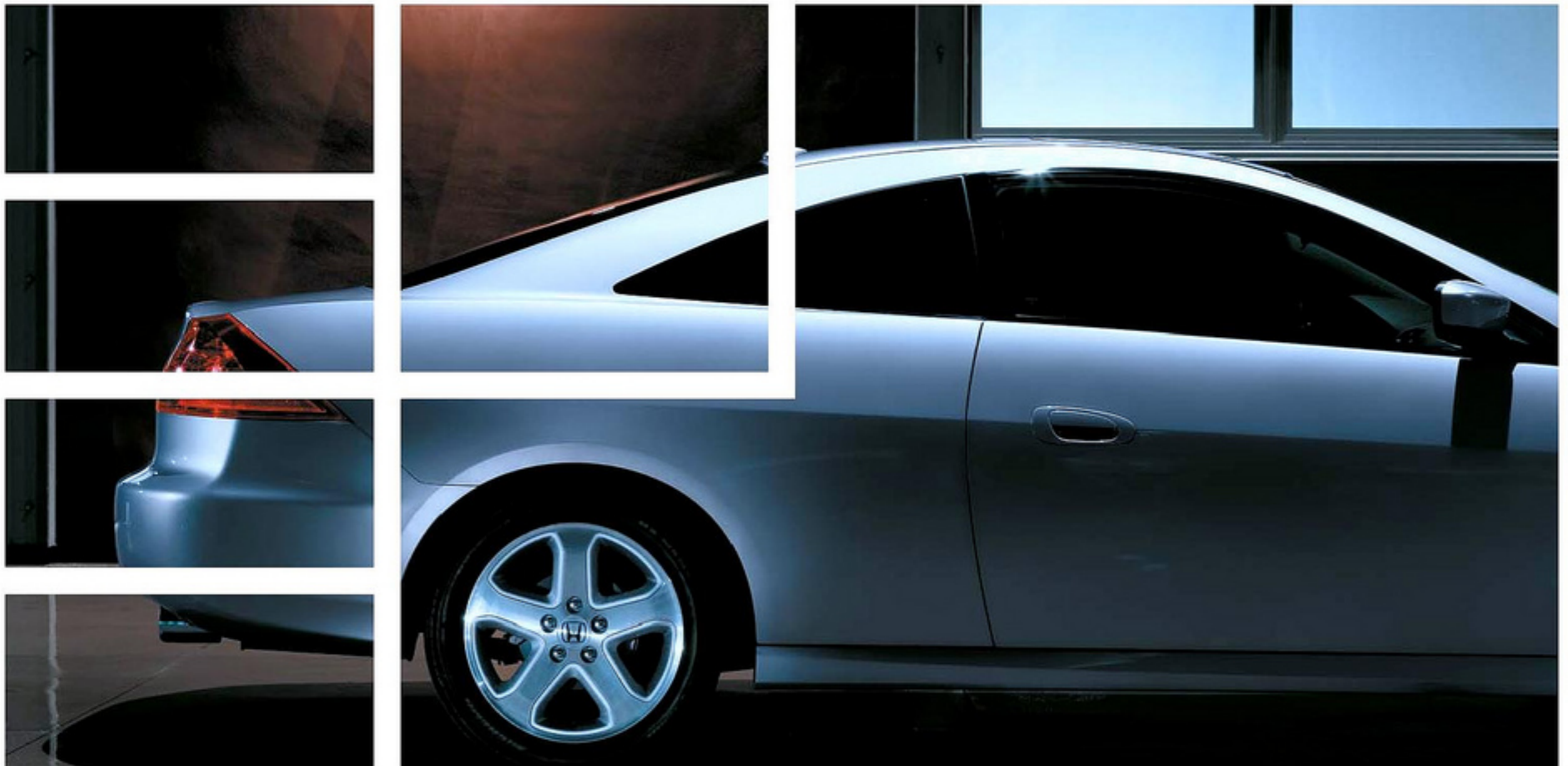


06 Honda

Accord Coupe





A sporty cockpit that fits like a glove.



Vehicle Stability Assist (VSA) on V-6 models.



We're giving thrill seekers
a faster-moving target.



Six gears. 244 horsepower. Zero compromises.



Accord EX V-6 Coupe shown in Sapphire Blue Pearl.

More proof that pulses were made to be quickened.

The Accord Coupe has it all, striking the perfect balance between flat-out fun, cutting-edge technology and everyday luxury. So it was a challenge finding ways to improve it. But we did—with more safety features, more powerful engines and sportier styling both inside and out. It still has everything people love about Honda's take on scorching two-door performance. For '06, there's just more to love.



Accord EX V-6 6-speed Coupe shown in Alabaster Silver Metallic.



Grip the brushed aluminum shifter in a 6-speed manual transmission-equipped EX V-6. That's a powerful feeling. V-6 MT models also get exclusive 17" wheels and carbon fiber-look interior trim.

Sharply honed power rack-and-pinion steering.



Eat up corners with a double wishbone front suspension and 5-link double wishbone rear design. They team with precisely damped shock absorbers for a smooth, planted feeling in the curves.

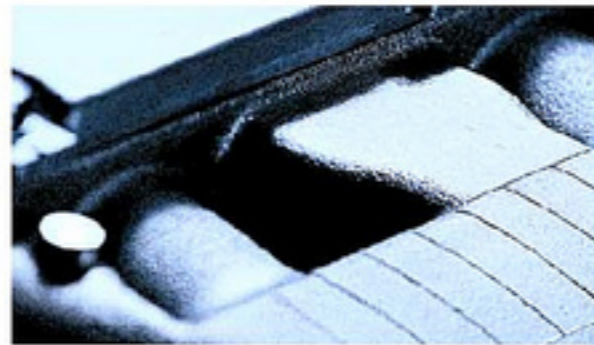
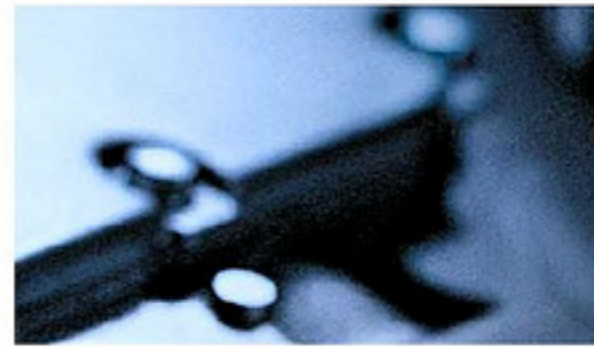
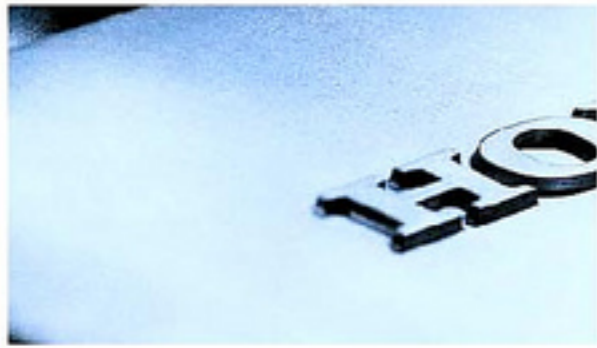
Front and rear stabilizer bars limit body roll.



Most models feature 4-wheel disc brakes with ventilated front rotors. And the Electronic Brake Distribution (EBD) system on EX and V-6 models balances braking forces at each wheel.



Accord EX V-8 Coupe shown in San Marino Red.



244-hp, 3.0-liter VTEC® V-6 engine.

Choose a quick-shifting 5-speed manual transmission or an available 5-speed automatic in 4-cylinder models. In V-6 Accords, go with the standard 5-speed automatic or opt for a 6-speed manual.

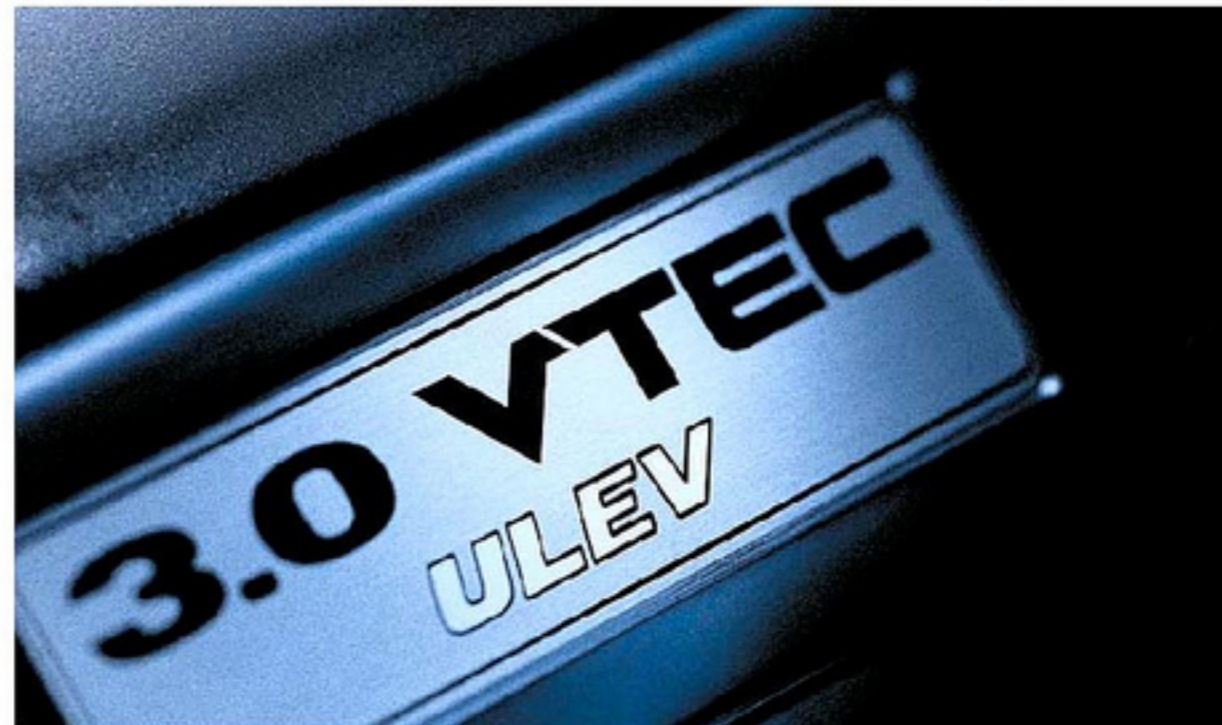


166-hp, 2.4-liter i-VTEC® 4-cylinder engine.

VTEC adjusts valve timing and lift to increase low-end torque as well as high-rpm power. In the 2.4-liter engine, i-VTEC adds variable timing control (VTC), boosting power and economy!

4 valves per cylinder for easy breathing.

Be worry-free, thanks to tough internals like forged-steel crankshafts. Legendary Honda reliability is a given – all Accord models can go 100,000 miles or more before their first required tune-up.*



Take a bigger breath. With new intake and exhaust tuning for 2006, both Accord engines now pump out more horsepower. A new Drive-by-Wire Throttle System™ in the 4-cylinder engine smooths the power delivery. And the new Maintenance Minder system monitors how you drive and reminds you when it's time for service.

*Does not apply to fluid and filter changes. Exact mileage is determined by actual driving conditions. Please see your owner's manual for more details.

Maybe you'll feel like taking your own sweet time. Maybe.



Space to keep essentials close at hand.*



Accord EX V-6 Coupe interior shown in Black Leather with available Honda Satellite-Linked Navigation System.*

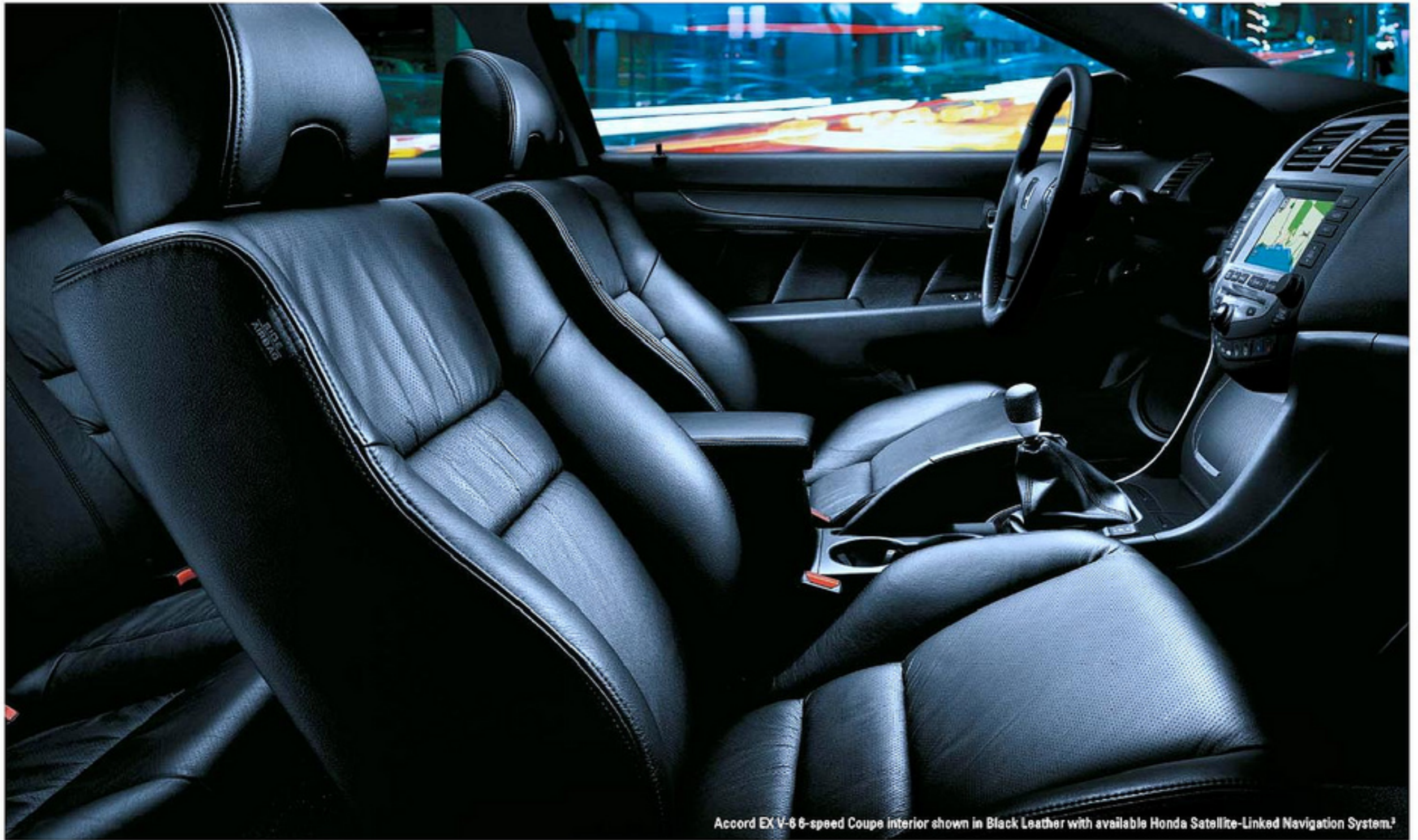
XM² delivers over 150 digital-quality channels—and all music channels are commercial-free.

Audio flows from a 120-watt, 6-speaker AM/FM/CD system. EX models add a 6-disc in-dash CD changer. And XM² Satellite Radio³ is included on the leather-trimmed Accords.



All descriptions of driver-focused design pale in comparison to one defining moment behind the wheel of the Accord Coupe. Deep-bolstered seats hug your form, while sporty gauges get your attention. Steering wheel-mounted controls for audio and cruise control are at the ready on most models—as is a button to activate the voice recognition feature on navigation system-equipped models.

*Drive responsibly. State laws prohibit distracted driving.



Accord EX V-6 6-speed Coupe interior shown in Black Leather with available Honda Satellite-Linked Navigation System.²

As good as it looks, it may feel even better. Immerse yourself in an environment complete with luxuries like air conditioning with an air-filtration system. With the available leather trim, you also get heated front seats and dual-zone automatic climate control. And 6-speed models pump up the audio with a 180-watt system.



A sense of direction you can actually trust.

Extraordinary technology is at your fingertips with the Accord's available Honda Satellite-Linked Navigation System.³ A GPS receiver teams with a DVD-based database of maps and points of interest to guide you to your destination.* And with voice recognition, you can zero in on a target by simply speaking a command.

*Some roads unverified. See the navigation system owner's manual for more details on coverage.



Get turn-by-turn directions and voice prompts.



Select a database location or enter an address.



Find the shortest distance between two points, the nearest gas station or a bite to eat. The navigation system features an 8.0-gigabyte DVD database of more than 7 million points of interest, as well as maps of just about everywhere you can drive in the contiguous United States.* The system's large 7-inch touch screen, integrated joystick and moving map display make it easy to select and find just what you're looking for.



With the voice recognition feature, you can issue over 600 voice commands, like "find nearest ATM." Operate the audio and climate controls, too—with your hands never leaving the wheel.

Safety for Everyone, applied.

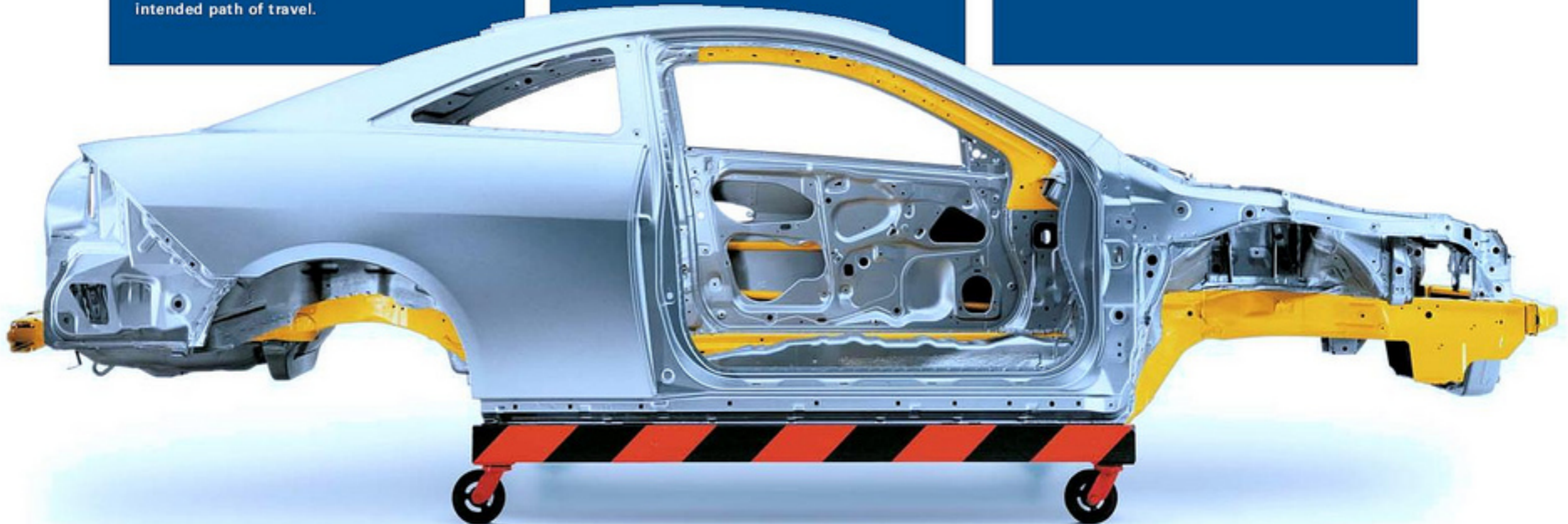


Safety starts with giving you more control.

Vehicle Stability Assist (VSA) is now standard on Accord V-6 models. VSA is a sophisticated system that can sense oversteer and understeer, and can brake individual wheels and/or reduce engine power to help keep the driver on the intended path of travel.

The Accord Coupe's impressive array of safety features helped it earn a 5-star crash-test rating from the National Highway Traffic Safety Administration (NHTSA) in frontal impact testing.[†]

In Accord V-6 models, traction control—a function of VSA—helps limit wheel slip under acceleration. It enhances your ability to get under way safely, even on slippery or wet road surfaces.



Honda's Safety for Everyone philosophy is more than a motto—it takes shape in the advanced safety features of our vehicles. Every Accord has standard Daytime Running Lights (DRL), ABS brakes and front, front side and side curtain airbags. And now V-6 Accords feature standard Vehicle Stability Assist (VSA) as well. It's that kind of thinking that earned several Honda vehicles 5-star crash-test ratings.[†]



*Honda reminds you and your passengers to always buckle up. Children 12 and under are safest when properly restrained in the rear seat.
 †National Highway Traffic Safety Administration frontal crash test, December 2002. Government star ratings are part of the National Highway Traffic Safety Administration's (NHTSA) New Car Assessment Program (NCAAP), found at Safercar.gov.



Front and rear crush zones are designed to help absorb impact energy before it can reach the passenger compartment. This rigid safety cell is reinforced to resist the intrusion of impact forces.

Systems designed to react and protect.



Anti-lock braking (ABS) helps maintain steering control under hard braking. And on V-6 and EX models, Electronic Brake Distribution (EBD) balances the braking forces according to load.

Technology of future industry standards—now.

The dual-stage, dual-threshold front airbags[†] inflate at one of two rates and thresholds, depending on the severity of impact and seat-belt use. Front side and side curtain airbags help prevent injuries in the event of a sufficient side impact. And an Occupant Position Detection System (OPDS) will prevent deployment of the front passenger's side airbag if a child or small-statured person is in its path.

The Accord Coupe's front seat belts with pretensioners automatically tighten in a sufficient impact. And outboard rear seats offer the LATCH (Lower Anchors and Tethers for Children) system.



For a high-tech firm, we're pretty down to earth.

Soichiro Honda founded the Honda Motor Co. in 1948 to help people get around with affordable, dependable transportation. Within a few short years, Honda was one of the world's preeminent motorcycle manufacturers – just the first of our many successes.



All along, our guiding principle has been to listen to people and understand their needs. So we design and build our products in the markets where they're used. We place great importance on safety engineering and on being friendlier to our planet's environment. We never forget that driving should be fun. And we believe that the power of ingenious thinking can make great things possible.

We're always looking ahead.



Advanced Honda thinking takes many forms. This is ASIMO, the world's most advanced and capable humanoid robot. Along with being a prime example of pure Honda ingenuity, this remarkable machine could

also one day help improve the lives of many people who have limited physical abilities.

Honda has long led the way in making Earth-friendlier cars. The latest is our advanced zero-emission FCX fuel-cell car – the first certified for U.S. commercial use.

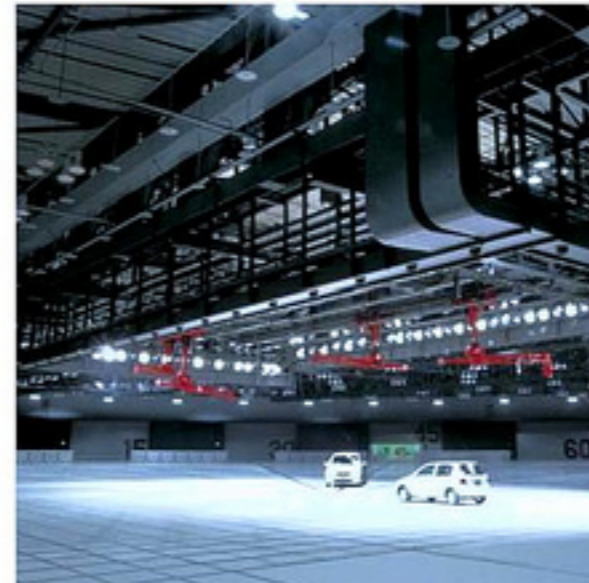
It's the only air we've got.



Honda has joined with GE – the world's largest maker of jet engines – to bring to market the Honda-developed HF118 jet engine. It offers highly fuel-efficient and low-emission performance for aircraft.

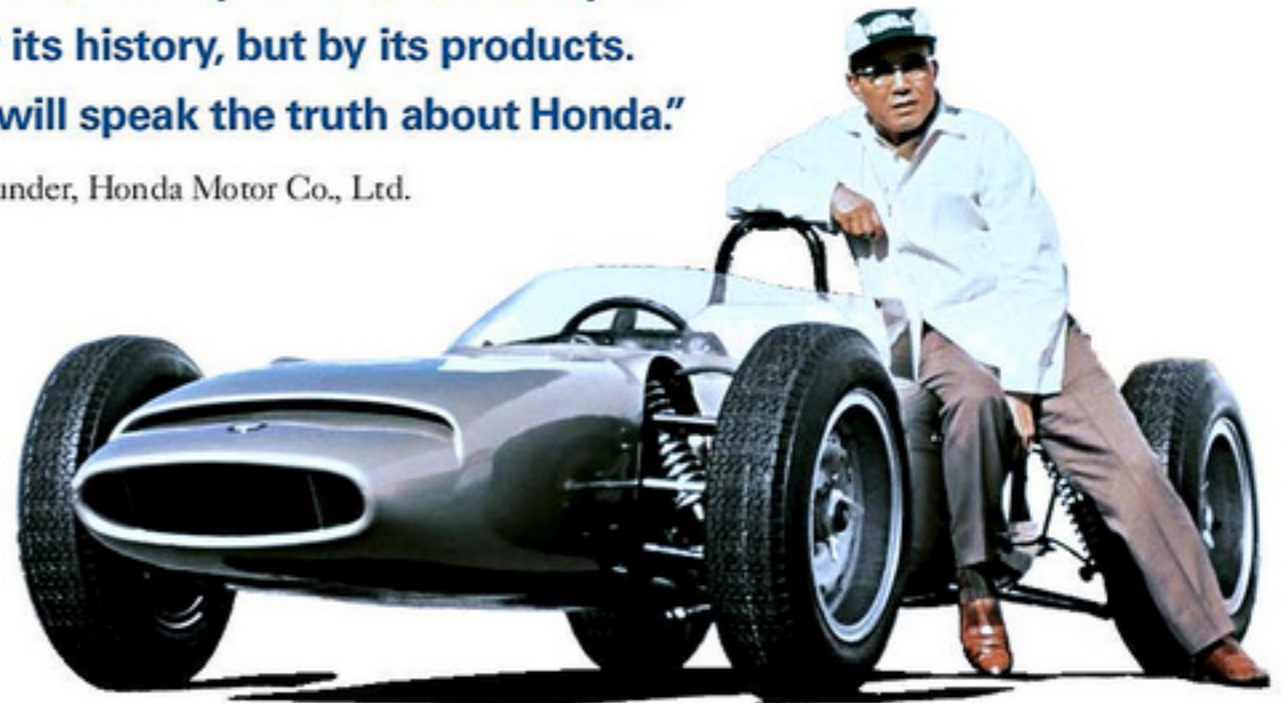


Safety engineering meets reality here.



“A company is most clearly defined neither by its people nor by its history, but by its products. Our products will speak the truth about Honda.”

Soichiro Honda, Founder, Honda Motor Co., Ltd.



Honda has been assembling cars in the U.S. since 1982. Today, close to 4 out of 5 Honda vehicles sold in the U.S. are assembled in North America – with the help of over 550 U.S. supplier companies.

Over 27,500 American associates pitch in.



Our advanced safety research facilities play a critical role in the evolution of our automotive **Safety for Everyone** effort. Through a comprehensive and evolving approach to vehicle safety, Honda seeks to provide a high level of occupant and pedestrian protection in all of our cars and trucks, regardless of size or price, as well as increased crash compatibility with other vehicles.

Generators, outboards, lawnmowers, personal watercraft, cars, trucks, motorcycles, ATVs and more add up to Honda's being the world's largest engine maker.



Racing makes for quicker engineers.



Racing improves our products – and our engineers' ability to innovate. Honda's latest victories include the first four places in the 2005 Indy 500, topped by Dan Wheldon of Andretti Green Racing.



Accord EX V-6 Coupe shown in Graphite Pearl.



Accord EX V-6



Accord EX V-6 6-Speed



Accord LX V-6



Accord is continually praised by those who are trusted to note the cream of the crop.

Consumer Guide[®] named it a "Best Buy."⁴

And for 19 of the past 23 years, *Car and Driver* has placed Accord on its prestigious "10Best" Cars list. Just two more reasons to keep the Accord at the top of your own list.

Accord LX Coupe

- 166-hp, 2.4-liter i-VTEC 4-cylinder engine
- Drive-by-Wire Throttle System
- 5-speed manual transmission
- Available 5-speed automatic transmission
- 4-wheel double wishbone suspension
- Front, front side and side curtain airbags
- Anti-lock braking system (ABS)
- Daytime Running Lights (DRL)
- Tilt and telescopic steering column
- Air conditioning with air-filtration system
- Cruise control
- 16-inch alloy wheels

Accord EX Coupe

Adds to or replaces LX features:

- 4-wheel disc brakes
- Electronic Brake Distribution (EBD)
- Power moonroof with tilt feature
- Heated side mirrors
- Ambient console lighting
- AM/FM/6-disc in-dash CD audio system
- Available leather-trimmed interior with heated front seats, 8-way power driver's seat, dual-zone automatic climate control system and XM Satellite Radio²
- Available Honda Satellite-Linked Navigation System³ with Voice Recognition

Accord LX V-6 Coupe*

Adds to or replaces LX features:

- 244-hp, 3.0-liter VTEC V-6 engine
 - 5-speed automatic transmission
 - Vehicle Stability Assist (VSA) with traction control
 - Brake Assist
 - Driver's seat with 8-way power adjustment
 - 17-inch alloy wheels
 - 4-wheel disc brakes
 - Electronic Brake Distribution (EBD)
 - Power moonroof with tilt feature
 - Heated side mirrors
 - AM/FM/6-disc in-dash CD audio system
- *Manual transmission not available.

Accord EX V-6 Coupe

Adds to or replaces LX V-6 features:

- Leather-trimmed interior
- Heated front seats
- Dual-zone automatic climate control system
- XM Satellite Radio²
- HomeLink[®] remote system³
- Available Honda Satellite-Linked Navigation System³ with Voice Recognition

Accord EX V-6 6-Speed Coupe

Adds to or replaces EX V-6 features:

- Close-ratio 6-speed manual transmission
- Perforated leather-trimmed interior
- Carbon fiber-look interior trim
- 180-watt AM/FM/6-disc in-dash CD premium audio system
- Exclusive 17-inch alloy wheels
- Front shock tower bar

2006 accord coupe | specifications and features

Engineering	LX	EX	LX V-6	EX V-6	EX V-6 6-Speed
Engine Type	In-Line 4-Cylinder	In-Line 4-Cylinder	V-6	V-6	V-6
Engine Block/Cylinder Head	Aluminum-Alloy	Aluminum-Alloy	Aluminum-Alloy	Aluminum-Alloy	Aluminum-Alloy
Displacement (l/c)	2354	2354	2997	2997	2997
Horsepower @ rpm (SAE net, Rev 804) [*]	166 @ 5800	166 @ 5800	244 @ 6250	244 @ 6250	244 @ 6250
Torque (lb.-ft. @ rpm) [*]	160 @ 4000	160 @ 4000	211 @ 5000	211 @ 5000	211 @ 5000
Compression Ratio	9.7:1	9.7:1	10.0:1	10.0:1	10.0:1
Valve Train	16-Valve DOHC i-VTEC [†]	16-Valve DOHC i-VTEC	24-Valve SOHC VTEC [†]	24-Valve SOHC VTEC	24-Valve SOHC VTEC
High-Performance Intake Manifold			*	*	*
Multi-Point Fuel Injection	*	*	*	*	*
Drive-by-Wire Throttle System ^{††}	*	*	*	*	*
CARB Emissions Rating	LEV-2/P2EV [†]	LEV-2/P2EV [†]	LEV-2/ULEV-2 [†]	LEV-2/ULEV-2 [†]	LEV-2/ULEV-2 [†]
Direct Ignition System with Immobilizer	*	*	*	*	*
100,000-Miles-or-More Tune-Up Interval [†]	*	*	*	*	*
Transmissions					
5-Speed Manual Transmission	*	*			
5-Speed Automatic Transmission	Available	Available	*	*	
Close-Ratio 6-Speed Manual Transmission					*
Body/Suspension/Chassis					
Unit-Body Construction	*	*	*	*	*
Double Wishbone Front Suspension	*	*	*	*	*
5-Link Double Wishbone Rear Suspension	*	*	*	*	*
Stabilizer Bar (mm, front/rear)	25.4/14.0	25.4/14.0	25.4/14.0	25.4/14.0	25.4/14.0
Front Shock Tower Bar					*
Variable Power-Assisted Rack-and-Pinion Steering	*	*	*	*	*
Steering Wheel Turns, Lock-to-Lock	2.94	2.94	2.75	2.75	2.75
Steering Ratio	15.22	15.22	15.22	15.22	15.22
Turning Diameter, Curb-to-Curb (ft.)	35.4	35.4	38.9	38.9	38.9
Power-Assisted Ventilated Front Disc/ Solid Rear Disc Brakes (in., front/rear)	11.1/Drum	11.1/10.2	11.1/10.2	11.1/10.2	11.8/10.2
Wheels	16" Alloy	16" Alloy	17" Alloy	17" Alloy	Exclusive 17" Alloy
All-Season Tires	P205/60 R16 91V	P205/60 R16 91V	P215/50 R17 93V	P215/50 R17 93V	P215/50 R17 93V
Exterior Measurements					
Wheelbase (in.)	105.1	105.1	105.1	105.1	105.1
Length (in.)	187.8	187.8	187.8	187.8	187.8
Height (in.)	55.7	55.7	55.8	55.8	55.8
Width (in.)	71.3	71.3	71.3	71.3	71.3
Track (in., front/rear)	61.1/61.2	61.1/61.2	61.1/61.2	61.1/61.2	61.1/61.2
Curb Weight (lbs., MT/AT)	3096/3122	3097/3155	NA/3358	NA/3364	3303/NA
Interior Measurements					
Headroom (in., front/rear)	39.8/36.1	37.5/36.1	37.5/36.1	37.5/36.1	37.5/36.1
Legroom (in., front/rear)	43.1/31.9	43.1/31.9	43.1/31.9	43.1/31.9	43.1/31.9
Shoulder Room (in., front/rear)	56.1/55.4	56.1/55.4	56.1/55.4	56.1/55.4	56.1/55.4
Hiproom (in., front/rear)	54.2/46.1	54.2/46.1	54.2/46.1	54.2/46.1	54.2/46.1
Cargo Volume (cu. ft.)	12.8	12.8	12.8	12.8	12.8
Passenger Volume (cu. ft.)	91.1	88.0	88.0	88.0	88.0
Seating Capacity	5	5	5	5	5
EPA Mileage Estimates^{††}/Fuel Capacity					
5-Speed Manual (City/Highway)	26/34	26/34			
5-Speed Automatic (City/Highway)	24/34 [†]	24/34 [†]	20/29	20/29	
6-Speed Manual (City/Highway)					21/30
Fuel (gal.)	17.1	17.1	17.1	17.1	17.1
Required Fuel	Regular Unleaded	Regular Unleaded	Regular Unleaded	Regular Unleaded	Regular Unleaded
Seating					
Leather-Trimmed Seats and Door-Panel Inserts		Available		*	Perforated
Heated Front Seats		(with Leather)		*	*
Driver's Seat with 8-Way Power Adjustment		(with Leather)	*	*	*
Driver's Seat Adjustable Lumbar Support		*		*	*
Driver's Seat with Power Height Adjustment	Manual	*		*	*
Passenger-Side Walk-In Feature	*	*	*	*	*
60/40 Split Fold-Down Rear Seatback with Lock	*	*	*	*	*
Audio Systems					
120-Watt AM/FM/CD Audio System	with 6 Speakers				
120-Watt AM/FM/6-Disc In-Dash CD Changer Audio System		with 6 Speakers	with 6 Speakers	with 6 Speakers	
180-Watt AM/FM/6-Disc In-Dash CD Changer Premium Audio System					with 6 Speakers
XM [®] Satellite Radio [†]		(with Leather)		*	*

^{*}Horsepower and torque calculations reflect new SAE J1349 procedures revised August, 2004.

[†]Does not apply to fluid and filter changes. Exact mileage is determined by actual driving conditions. Please see your owner's manual for more details.

2006 accord coupe | specifications and features (cont.)

Safety	LX	EX	LX V-6	EX V-6	EX V-6 6-Speed
3-Point Seat Belts at All Seating Positions	*	*	*	*	*
Front 3-Point Seat Belts with Automatic Tensioning System	*	*	*	*	*
Driver's and Front Passenger's Seat Belt Reminder	*	*	*	*	*
Dual-Stage, Dual-Threshold Front Airbags (SRS)	*	*	*	*	*
Front Side Airbags with Passenger-Side Occupant Position Detection System (OPDS)	*	*	*	*	*
Side Curtain Airbags	*	*	*	*	*
Vehicle Stability Assist (VSA [®]) with Traction Control	*	*	*	*	*
Brake Assist	*	*	*	*	*
Anti-Lock Braking System (ABS)	*	*	*	*	*
Electronic Brake Distribution (EBD)	*	*	*	*	*
Daytime Running Lights (DRL)	*	*	*	*	*
Side-Impact Door Beams	*	*	*	*	*
Outboard Lower Anchors and Tethers for Children (LATCH)	*	*	*	*	*
Child-Seat Tether Anchor (rear-center)	*	*	*	*	*
Emergency Trunk Opener	*	*	*	*	*
Exterior Features					
Power Moonroof with Tilt Feature	*	*	*	*	*
Security System	*	*	*	*	*
Remote Entry System with Power Window Control	*	*	*	*	*
Variable Intermittent Windshield Wipers	*	*	*	*	*
Multi-Reflector Halogen Headlights with Auto-Off	*	*	*	*	*
Body-Colored Power Side Mirrors	*	Heated	Heated	Heated	Heated
Body-Colored Impact-Absorbing Bumpers	*	*	*	*	*
Chrome Exhaust Finisher	*	*	Dual Exhaust	Dual Exhaust	Dual Exhaust
LED Taillights	*	*	*	*	*
Comfort & Convenience					
Air Conditioning with Air-Filtration System	*	*	*	*	*
Dual-Zone Automatic Climate Control System	*	(with Leather)	*	*	*
Honda Satellite-Linked Navigation System [™] with Voice Recognition	*	Available (with Leather)	*	Available	Available
Power Windows with Auto-Up/Down Driver's Window	*	*	*	*	*
Illuminated Power Window Switches	*	*	*	*	*
Power Door Locks	*	*	*	*	*
Cruise Control	*	*	*	*	*
Perforated Leather-Wrapped Steering Wheel	*	(with Leather)	*	*	*
Aluminum Shift Knob with Perforated Leather	*	*	*	*	*
Illuminated Steering Wheel-Mounted Controls	Cruise	Cruise/Audio/Nav (available)	Cruise/Audio	Cruise/Audio/Nav (available)	Cruise/Audio/Nav (available)
Tilt and Telescopic Steering Column	*	*	*	*	*
HomeLink [®] Remote System [†]	*	*	*	*	*
Premium Interior Accents	*	*	*	*	Carbon-Fiber-Look
Center Console with Sliding Armrest and Storage Compartments	*	*	*	*	*
Front Audio Storage (12 CD-case capacity)	*	*	*	*	*
Beverage Holders, Front and Rear (6 total)	*	*	*	*	*
Driver's and Front Passenger's Illuminated Vanity Mirrors	*	*	*	*	*
Ambient Console Lighting	*	*	*	*	*
Map Lights	*	*	*	*	*
Sunglasses Holder	*	*	*	*	*
12-Volt Power Outlets	*	*	*	*	*
Lockable Glove Compartment with Light	*	*	*	*	*
Electronic Remote Trunk Release	*	*	*	*	*
Rear Window Defroster	*	*	*	*	*
Side Door Pockets with Integrated Beverage Holder	*	*	*	*	*
Instrumentation					
Maintenance Minder System	*	*	*	*	*
Red Backlit Gauges	*	*	*	*	*
Tachometer	*	*	*	*	*
Digital Odometer and Digital Trip Meters (2)	*	*	*	*	*
Exterior Temperature Indicator	*	(with Leather)	*	*	*

¹Based on 2006 EPA mileage estimates. Use for comparison purposes only. Actual mileage may vary. ²Required XM[®] subscription sold separately after three trial months. All fees and programming subject to change. Subscriptions subject to Customer Agreement available at xmradio.com. XM Ready audio system is pre-wired to accept the dealer-installed accessory XM Satellite Radio hardware. XM service only available in the 48 contiguous United States. The XM name and XM Ready are registered trademarks of XM Satellite Radio Inc. ³The Honda Satellite-Linked Navigation System is available only in the 48 contiguous United States on select EX models. ⁴2005 Consumer Guide, Consumer Guide[®] is a registered trademark of Publications International, Ltd. ⁵HomeLink[®] is a registered trademark of Prince Corporation, a wholly owned subsidiary of Johnson Controls. ⁶**3-Year/36,000-Mile Limited Warranty. 5-Year/60,000-Mile Limited Powertrain Warranty.** Ordinary maintenance or adjustments, parts subject to normal wear and replacement, and certain items are excluded. See your Honda dealer for terms and conditions of the limited warranties. ⁷PZEV (Partial Zero-Emission Vehicle) as certified by CARB. PZEV vehicles are SULEV-rated and have zero evaporative emissions. Available on select LX and EX 4-cylinder models with AT in CA and some Northeastern states. ⁸ULEV-2 rated on V-6 models available in CA and some Northeastern states. ⁹Based on 2005 EPA mileage estimates. Final 2006 EPA mileage estimates were not available at the time of printing. Use for comparison purposes only. Actual mileage may vary. **Always use seat belts and appropriate child seats. Children 12 and under are safest when properly restrained in the rear seat.** Specifications, features, illustrations and equipment shown in this brochure are based upon the latest available information at the time of printing. Although descriptions are believed correct, accuracy cannot be guaranteed. American Honda Motor Co., Inc., reserves the right to make changes at any time, without notice or obligation, in colors, specifications, accessories, materials and models. Some features mentioned herein are not available in all areas. See your Honda dealer for details. California version differs slightly due to emission standards. Some vehicles may be shown with optional equipment. Available = Optional. NA = Not applicable. All images contained herein are either owned by American Honda Motor Co., Inc., or used under a valid license. It is a violation of federal law to reproduce these images without express written permission from American Honda Motor Co., Inc., or the individual copyright owner of such images. Honda Financial Services is a DBA of American Honda Finance Corporation. Honda, the H-mark symbol, Honda Care, Honda Satellite-Linked Navigation System, Drive-by-Wire Throttle System, VSA, i-VTEC and VTEC are trademarks of Honda Motor Co., Ltd. © 2005 American Honda Motor Co., Inc.



Sport Package

The dealer-installed EX Sport package includes a body-colored rear wing spoiler, sporty fog lights and an automatic day/night rearview mirror.



Convenience Package

Outfit your Accord LX Coupe with alloy wheels with wheel locks, splash guards and a trunk tray. And it's all covered by the warranty* if installed by the dealer when you purchase the vehicle.



Accord Sedan



Accord Hybrid



Civic Sedan



Civic Hybrid



Civic Coupe



S2000



Insight



Element



CR-V



Pilot



Ridgeline



Odyssey



Your dealer's team of trained technicians is at the ready to help keep your Honda in superb shape. All 2006 Honda vehicles – and any Genuine Honda Accessories installed at the time of purchase – are covered by the 3-year/36,000-mile New-Vehicle Limited Warranty.⁶ Plus, Honda cars and trucks are covered by a 5-year/60,000-mile Limited Powertrain Warranty, too.

For more information or assistance, see your Honda dealer or please give us a call at 1-800-33-Honda.

HONDA

Financial Services

Whether you buy or lease a Honda vehicle, Honda Financial Services can assist you with the process. Please ask your dealer which lease or purchase plan best suits your needs.

HONDA Care

Honda Care[™] is a highly affordable, comprehensive vehicle and travel protection plan backed by Honda reliability, service and parts. Please see your dealer for all the details.

