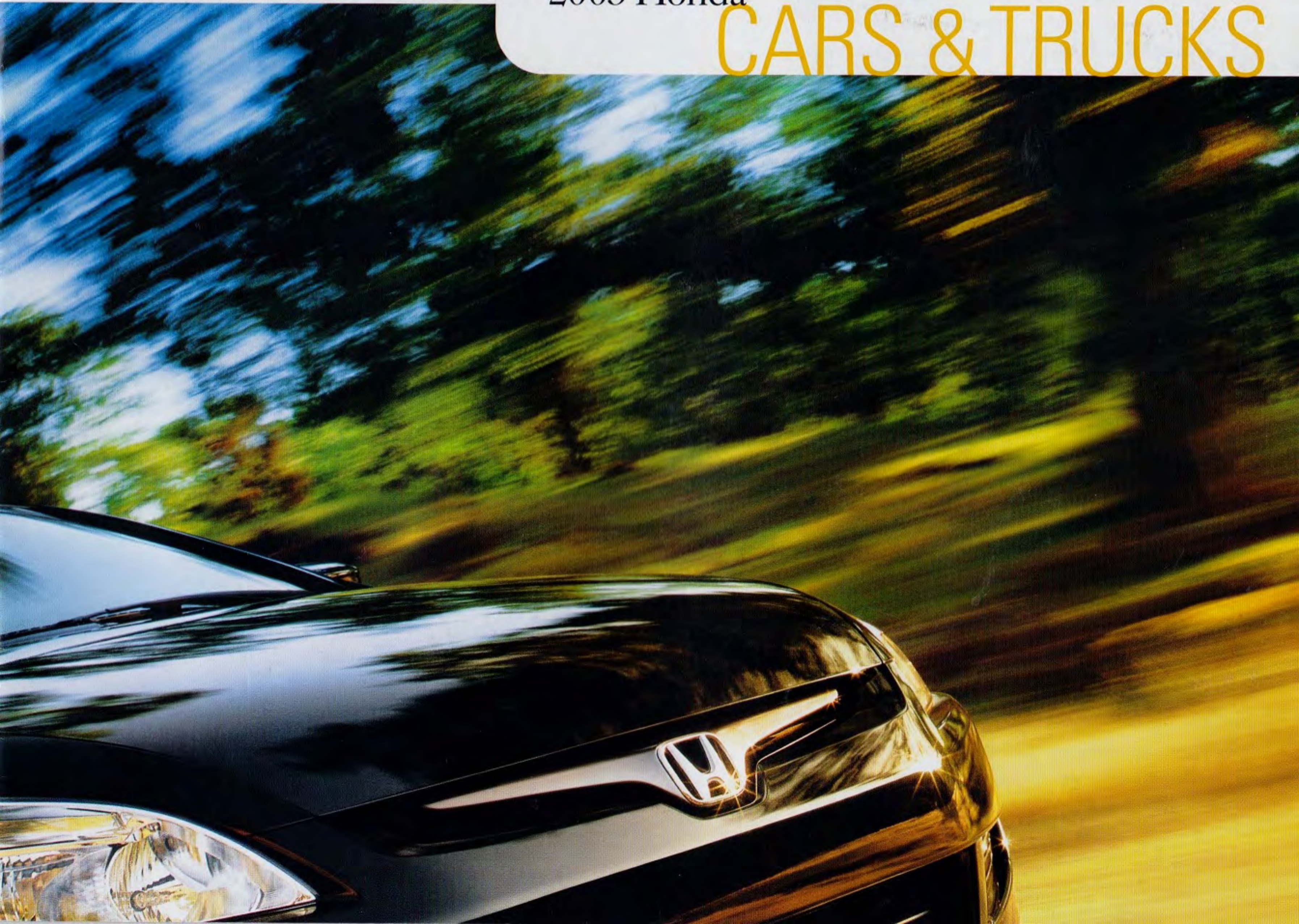


2003 Honda

# CARS & TRUCKS







**We're here.** At Honda, assistance and support are always available. Your dealer's team of trained technicians will help keep your Honda vehicle in terrific shape. Honda accessories installed at the time your vehicle was purchased are covered by our **3-year/36,000-mile limited warranty.**<sup>15</sup> And if you ever need more information or assistance, please feel free to call us at **1-800-33-Honda.**

**Visit us online.** For all of the latest Honda information, including product specifications, MSRPs, photographs and more, visit our Web site at **honda.com.** There's a vehicle configurator function, and you can even ask for a dealer price quote and apply for financing.

## HONDA

### Financial Services

Whether you buy or lease a Honda, **Honda Financial Services** can assist you with the process. Ask your dealer which lease or purchase plan best suits your needs.

## HONDA

### Care

**Honda Care™** is a comprehensive and affordable vehicle and travel protection plan backed by Honda reliability, service and parts. See your dealer for details.



Accord Sedan



Accord Coupe



Civic Sedan



Civic Coupe



Civic Si



Civic Hybrid



Insight



S2000



Odyssey



Pilot



CR-V



Element

(Winter 2002; prototype shown.)

<sup>1</sup>2002 The Complete Car Cost Guide, IntelliChoice, Inc. www.intellichoice.com. <sup>2</sup>Car and Driver, January 2002. <sup>3</sup>Available January 2003. <sup>4</sup>Only major streets, roads and highways are mapped outside metropolitan areas. See the navigation system owner's manual for the current detailed coverage area. <sup>5</sup>Drive responsibly. State laws prohibit distracted driving. <sup>6</sup>Available February 2003. <sup>7</sup>Based on 2003 EPA mileage estimates. Use for comparison purposes only. Actual mileage may vary. <sup>8</sup>Does not apply to fluid and filter changes. See your owner's manual for details. <sup>9</sup>NHTSA frontal crash test: October 2000; side crash test: November 2000. <sup>10</sup>Limited warranty. See dealer for details. <sup>11</sup>NHTSA frontal crash test: March 1999; side crash test: April 2002. <sup>12</sup>The factory-installed navigation system and DVD Entertainment System are only available separately on EX models with leather. See dealer for details. <sup>13</sup>4WD 5MT available June 2003. <sup>14</sup>FXC is a trademark of Milliken & Company. <sup>15</sup>**3-Year/36,000-Mile Limited Warranty:** Ordinary maintenance or adjustments, parts subject to normal wear and replacement, and certain items are excluded. See your Honda dealer for the terms and conditions of this limited warranty. **Always use seat belts and appropriate child seats. Children are safest in the rear seats.** Specifications, features, illustrations and equipment shown in this brochure are based upon the latest available information at the time of printing. Although descriptions are believed to be correct, accuracy cannot be guaranteed. American Honda Motor Co., Inc., reserves the right to make changes at any time, without notice or obligation, in colors, features, specifications, accessories, materials and models. Some features mentioned herein are not available in all areas. Some vehicles may be shown with optional equipment. Available=Optional. California versions differ slightly due to emission standards. Honda reminds you to "Tread Lightly!" Honda, the H-mark symbol, Honda Care, Honda Satellite-Linked Navigation System, IMA, i-VTEC, Magic Seat, Real Time, Variable Torque Management, VTEC and VTM-4 are trademarks of Honda Motor Co., Ltd. ©2002 American Honda Motor Co., Inc. Litho in U.S.A. 1.3MM8/2002 Printed in U.S.A. on 10% post-consumer recycled paper. Z02312





# MOST OF OUR DREAMS COME TO LIFE

Forward thinking is what we do. In fact, we feature a rich heritage of innovation.



Early on, we saw the **potential** of assembling our cars in the U.S.A.

Now, over 80% of Honda vehicles sold here are assembled in North America. But we are also

known worldwide for our **technology**, including some of the

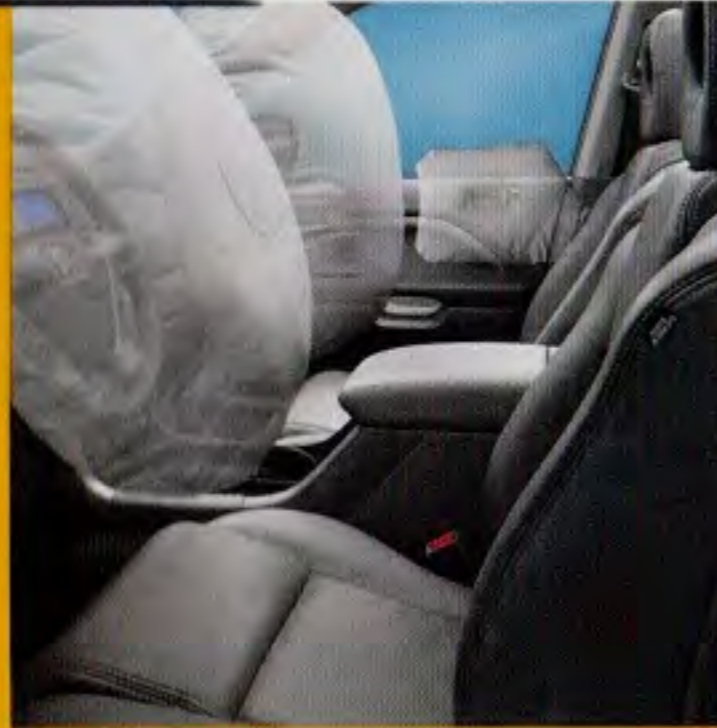
most advanced robotics on the planet – like the highly advanced humanoid robot Asimo. And, of course, for a full line of cars and trucks that appeals not only to the rational mind, but to the **fun-loving heart** too.







For more than four decades, Honda has been racing – and winning – on the **fastest and most demanding racetracks** in the world. And we've learned a lot about making cars that provide truly exhilarating performance. But we've also learned that the pressure of racing helps develop engineers who are highly innovative. So when they tackle subjects like **safety technology** for the street, they can quickly come up with smart, reliable answers.



Honda's record of **environmental concern** is unparalleled. In 1975, our Civic CVCC stunned the world by meeting federal clean-air standards without a catalytic converter. For 2003, we're the only maker to offer two gas-electric hybrid vehicles. Our natural-gas Civic GX has the world's cleanest-burning internal combustion engine in production. And with Honda engineers hard at work to advance **fuel-cell technology**, we're sure to stay out front in making Earth-friendlier cars.



For performance, for quality and for **sheer bang for your buck**, Honda garners plenty of recognition. In 2002, for instance, **IntelliChoice**<sup>®</sup> gave Civic Coupe, Civic Sedan and Accord Sedan **Best Overall Value of the Year** awards for their



respective classes.<sup>1</sup> And Accord appeared on *Car and Driver's* 20th annual "**10Best Cars**" list – its 16th time. Fact is, Honda is the only brand to be on the list every single year. So we're proud to be called "**the all-time 10Best boss brand.**"<sup>2</sup>



There's a lot of news to report for Honda in 2003. The **Accord Sedan** and **Accord Coupe** are all-new, in fact, with more style, more power and loads of refinement. There's the totally new **Pilot**, a roomy and powerful SUV that can seat up to

eight. The new **Civic Hybrid** adds a remarkably efficient gas-electric powertrain to the upgraded Civic lineup. And the **Element**, our new vehicle for all reasons, joins the fun in winter 2002. So now you have even more to choose from.



# ACCORD SEDAN



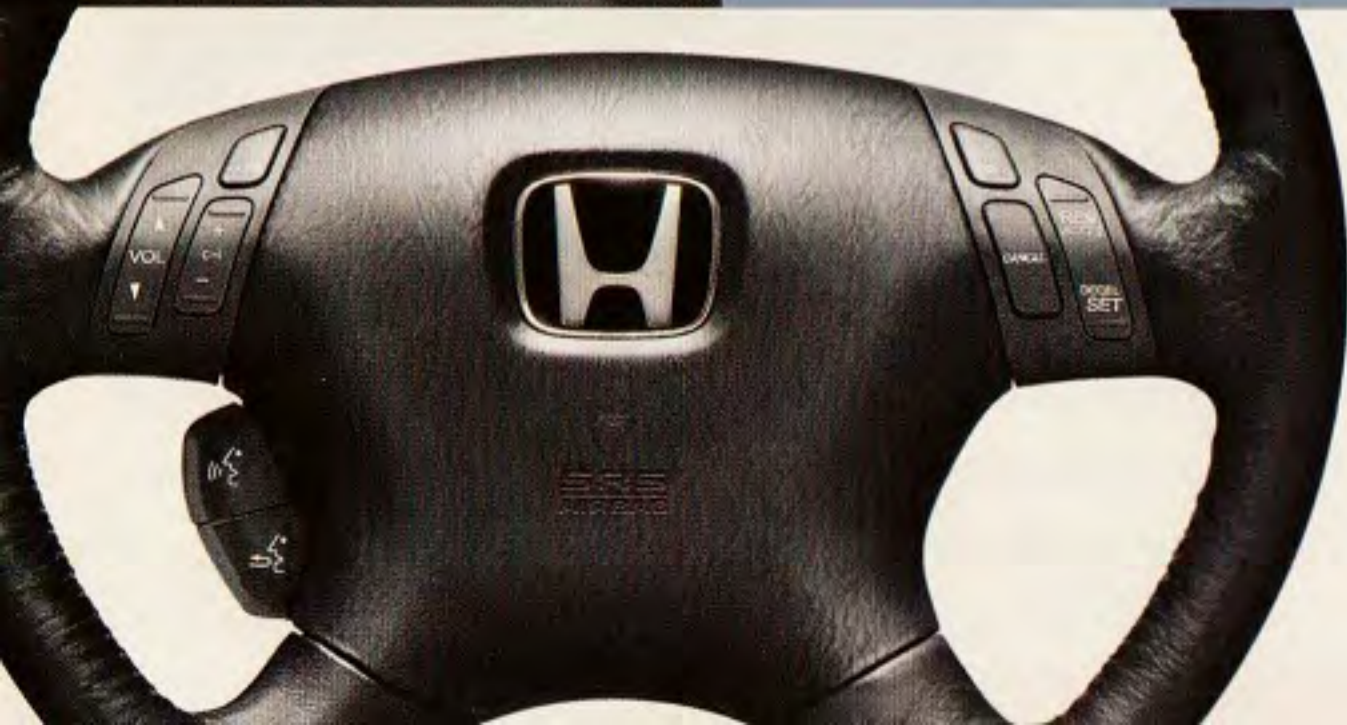
You can opt for the new **Honda Satellite-Linked Navigation System™ with Voice Activation<sup>3</sup>** on select Accord models. It's remarkably easy to use and has an information-packed DVD database.<sup>4</sup>



This latest edition of the **renowned** Honda Accord Sedan has been redesigned to be even more stylish, more comfortable and more fun to drive than ever before. And it offers a new level of **refinement** that other cars will be measured against for years. Yet it's unmistakably an Accord, a reassurance that millions of Accord owners are sure to celebrate.



Every Accord is equipped with a **multi-functional** armrest compartment.<sup>5</sup> It has a coin holder, storage space and a power outlet. Select models feature a set of controls integrated smoothly into the wheel.



#### **Accord DX Sedan includes:**

160-hp, 2.4-liter, 16-valve i-VTEC® engine • 5-speed manual transmission • Available 5-speed automatic • 4-wheel double wishbone suspension • ABS • AM/FM/CD audio system • Power windows

**LX adds:** Air conditioning • Cruise

control • Remote entry w/power window control • Sunglasses holder  
**EX adds:** Front side airbags • Power moonroof • 6-disc in-dash CD changer • Available leather-trimmed interior w/heated front seats, driver's seat w/8-way power adjustment, and dual-zone auto-

matic climate control system

**LX V-6 adds to LX:** 240-hp, 3.0-liter, 24-valve VTEC® V-6 engine

• 5-speed automatic transmission

**EX V-6 adds:** Leather-trimmed interior • Heated front seats • Dual-zone automatic climate control system • Side curtain airbags





Accord EX V-6 Sedan shown in Desert Mist Metallic.





Accord EX Coupe shown in Sapphire Blue Pearl.



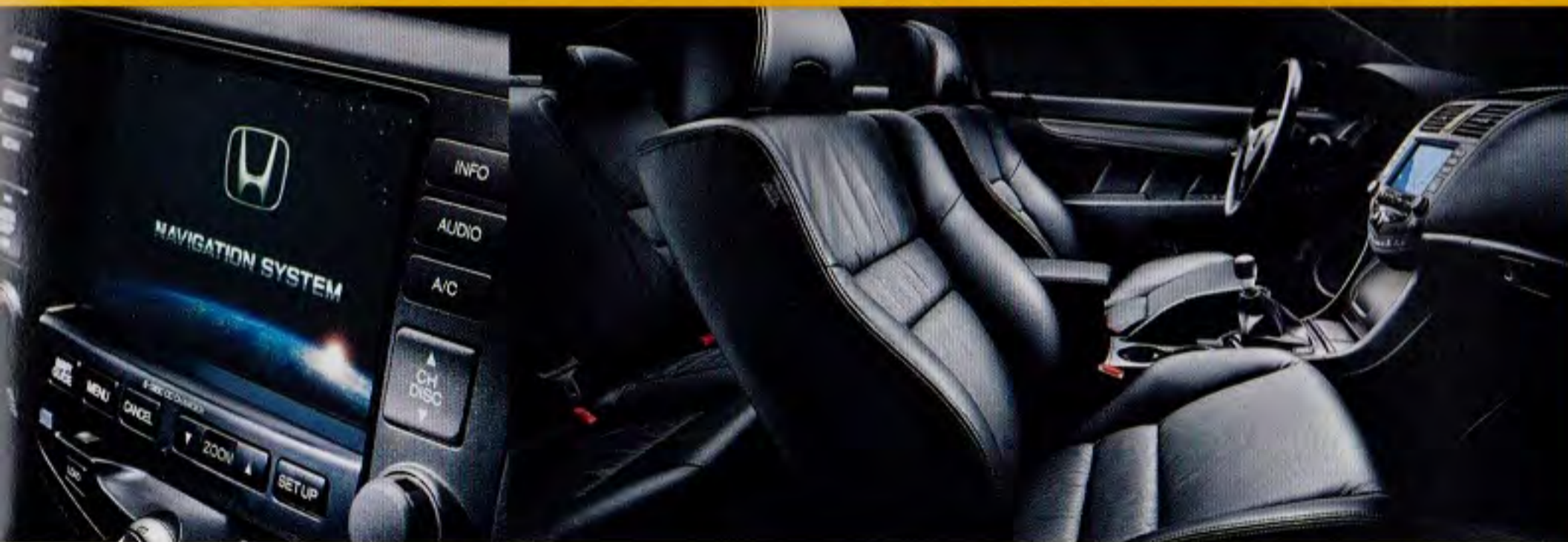
# ACCORD COUPE



Performance is part of Honda's genetic makeup. It's at our core. And the latest generation of **hard-charging** Honda cars arrives in the sleek form of the all-new Accord Coupe. The exhilaration peaks with a hot new V-6 model featuring a close-ratio **6-speed manual** gearbox<sup>6</sup> that offers the serious enthusiast an exceptional hands-on driving experience.



The Accord Coupe offers luxurious amenities like **dual-zone automatic climate control** as well as the available Honda Satellite-Linked Navigation System<sup>3</sup> on leather-trimmed EX and EX V-6 models.



Its **tilt and telescopic steering column** and a deeply bolstered driver's seat – plus a high-powered audio system – indicate that the Accord Coupe is a driver-oriented car with a talent for performance.



**Accord LX Coupe includes:**

160-hp, 2.4-liter, 16-valve i-VTEC engine • 5-speed manual transmission • Available 5-speed automatic • 4-wheel double wishbone suspension • AM/ FM/CD audio system w/6 speakers • Air conditioning • Remote entry

w/power window control • ABS

**EX adds:** Power moonroof w/tilt feature • 6-disc in-dash CD changer • Security system • 16" alloy wheels

**LX V-6 adds:** 240-hp, 3.0-liter, 24-valve VTECV-6 • 5-speed automatic transmission • Front side airbags • Traction Control System (TCS)

**EX V-6 adds:** Leather-trimmed interior • Heated front seats • Side curtain airbags

**EX V-6 6-speed<sup>6</sup> adds:** Close-ratio 6-speed manual transmission • Perforated leather-trimmed interior • 17" alloy wheels • Front shock tower bar



# CIVIC SEDAN



Choose an LX or EX, and you get **cruise control** that you operate from the steering wheel. More standards include power windows, mirrors and door locks, plus quick-to-cool air conditioning.



Fun is always a big part of the equation when you're behind the wheel of the Civic Sedan. It offers **quick response**, precise steering and plenty of room to enjoy it. Look at all the standard features, and you'll be surprised how far your car budget can still go. Especially in light of the Civic Sedan's **excellent mileage** and Honda quality that's built right in.

The Civic Sedan's roomy interior **goes upscale** for 2003, with its refined upholstery and several more enhancements. And the EX gives you a power moonroof and a remote entry system you'll enjoy.



#### **Civic DX Sedan includes:**

115-hp, 1.7-liter, 16-valve engine • Ultra-Low-Emission Vehicle (ULEV) certification • 5-speed manual transmission • Available 4-speed automatic • 4-wheel independent suspension • 110,000-mile tune-up interval<sup>8</sup> • AM/FM audio system

w/4 speakers and clock • Available front side airbags • 60/40 split fold-down rear seatback • Front beverage holders • Adjustable steering column • Immobilizer Theft-Deterrent System  
**LX adds to DX:** Air conditioning w/air-filtration system • Power

windows, mirrors and door locks • Cruise control • AM/FM/CD audio system w/4 speakers and clock • Center console w/armrest and storage • Map lights  
**EX adds to LX:** 127-hp, 1.7-liter, 16-valve VTEC engine • ABS • Power moonroof w/tilt feature





Civic EX Sedan shown in Nighthawk Black Pearl.





Civic EX Coupe shown in Shoreline Mist Metallic.



# CIVIC COUPE



Its look says “Drive me.” And once you’ve succumbed, it’s all over except for the great times ahead. Civic Coupe makes every trip more fun, with a quick-revving engine and sharp steering. Plenty of standards and space in its stylish new interior mean **huge value**. And you can expect a long, quality relationship. After all, this Civic is all Honda.



Every Civic comes with its own **soundtrack**. The DX has an AM/FM audio system with 4 speakers, HX and LX add a CD player, and the EX model goes two better—with a half-dozen speakers.



Civic Coupe’s cabin is not only roomy and **big on comfort**, but it’s a treat for the eyes as well with its smart new upholstery. And a quadruple 5-star safety rating<sup>9</sup> helps you drive with confidence.



#### **Civic DX Coupe includes:**

115-hp, 1.7-liter, 16-valve engine  
• 5-speed manual transmission  
• Available 4-speed automatic transmission  
• 4-wheel independent suspension  
• 110,000-mile tune-up interval<sup>9</sup>  
• Immobilizer Theft-Deterrent System

#### **HX adds to DX:**

117-hp, 1.7-liter, 16-valve VTEC-E engine  
• Available continuously variable transmission (CVT)  
• Power mirrors and door locks  
• Cruise control  
• AM/FM/CD audio system  
• 14" alloy wheels

#### **LX adds to DX:**

Air conditioning

w/air-filtration system  
• Power windows w/auto-down driver’s window  
• Cruise control  
• Map lights

**EX adds to LX:** 127-hp, 1.7-liter, 16-valve VTEC engine  
• AM/FM/CD audio system w/6 speakers  
• ABS

• Power moonroof w/tilt feature  
• Remote entry  
• 15" alloy wheels



# CIVIC Si



Honda knows what goes. We started racing back in the 1960s. And we've gotten pretty good at it, with five CART Driver's Championships. What's it mean to you? A **quick spin** in the 2003 Civic Si will tell. Just think of it as four decades of racing success distilled into one sharp car.



Civic Si shown in Taffeta White.

**Civic Si includes:** 160-hp, 2.0-liter, 16-valve, DOHC i-VTEC engine • Close-ratio 5-speed manual transmission • Center console-mounted rally shifter • 4-wheel independent suspension • Variable-assist electric power rack-and-pinion steering • Alloy wheels •

4-wheel disc brakes with ABS • Air conditioning w/air-filtration system • Power windows, mirrors and door locks • Cruise control • AM/FM/CD audio system w/6 speakers • Bolstered front sport seats • Power moonroof w/tilt feature • Leather-wrapped shift knob



Some automakers dabble in racing. Honda has been called a racing company that just happens to make cars. But you can be sure that what we learn on the track finds its way onto the street. Because many of the engineers who design the Honda models available to you have learned to innovate under pressure in the fast and furious crucible of world-class motorsports.



# CIVIC HYBRID



Civic Hybrid shown in Opal Silver Blue Metallic.

For more than half a century, Honda has been helping to create the future with smart, sensitive ideas. Now comes the Civic Hybrid. It can get up to **51 mpg<sup>7</sup>** with ample power from its innovative gasoline-electric powertrain. Yet you **never plug it in.** Best of all, it's every bit a Honda Civic.



When accelerating, the IMA™ System's electric motor helps boost horsepower. During braking, the motor turns into a generator to automatically recharge the nickel-metal hydride (NiMH) battery pack. You never have to plug it in—just fill it with gas and enjoy excellent mileage.

**Civic Hybrid includes:** 1.3-liter VTEC 4-cylinder gasoline engine w/Integrated Motor Assist (IMA) • Ultra-thin permanent magnet motor • Advanced nickel-metal hydride batteries (NiMH) • 5-speed manual transmission • Available continuously variable transmission (CVT) • 4-wheel independent suspension • Front side airbags • ABS • Automatic climate control w/air-filtration system • Power windows, mirrors and door locks • Cruise control • AM/FM/CD audio system w/4 speakers and roof-mounted antenna



# INSIGHT



Few cars proclaim their advanced technologies with such distinctive style as the 2003 Insight. Its smooth aerodynamics and various breakthroughs allow this first-in-America gasoline-electric hybrid to get the best-in-America highway mileage of **68 mpg!** And look brilliant doing it.





# S2000



S2000 shown in Sebring Silver Metallic.



No other sports car can present the performance credentials of the S2000. At **240 hp**, its engine puts out more power per liter than any normally aspirated production car. And its 6-speed manual gearbox and 4-wheel double wishbone suspension reflect 40 years of Honda **racing wisdom.**

Push the S2000's engine start button to the left of the steering wheel, and you'll instantly know you're driving something special. The sensation of this car's race-bred heritage becomes increasingly apparent with each mile as you accelerate, carve through corners and bring it to a stop in stunningly rapid fashion. And it all happens with typical Honda durability and dependability.



**S2000 includes:** 240-hp, 2.0-liter, 16-valve, DOHC VTEC engine  
• 6-speed manual transmission  
• Torque-sensing limited-slip differential  
• Independent in-wheel double wishbone suspension  
• Electric Power Steering (EPS)  
• ABS • Electrically powered soft

top w/glass rear window • Air conditioning w/air filtration  
• Power windows, mirrors and door locks • Cruise control  
• AM/FM/CD audio system • Leather-trimmed seats, door panels and steering wheel • Integrated roll bars • Digital instrument panel



# ODYSSEY



Whether you're coming or going, your Odyssey's ready for anything. The versatile third-row **Magic Seat™** holds three people or can disappear into the floor to create a nice flat space for extra cargo.



While you may want a minivan for the obvious reasons – seating capacity and cargo space – there are lots of other reasons to want an Odyssey. Like a **quadruple 5-star** safety rating.<sup>11</sup> A 240-hp engine and a 5-speed automatic transmission. In fact, *Automobile Magazine* found so many good reasons, they named Odyssey “**Best Minivan.**” Four years running.



Choose the opulence of an **EX with leather trim**, and you can then opt for the versatile Honda DVD Entertainment System or the Honda Satellite-Linked Navigation System.<sup>12</sup> The comfort is standard.



Fantasia 2000. © Disney, Inc.



**Odyssey LX includes:** 240-hp, 3.5-liter, 24-valve VTEC V-6 engine • 5-speed automatic transmission • 4-wheel independent suspension • ABS • Traction Control System (TCS) • Front and rear air conditioning • Power windows, mirrors and door locks • Cruise control

• AM/FM/cassette audio system w/4 speakers • Retractable 3rd-row Magic Seat • Front side airbags  
**EX adds to LX:** Automatic climate control • AM/FM/CD audio system w/6 speakers • Dual power sliding doors • Security system w/remote entry • Alloy wheels •

Driver's seat w/8-way power adjustment • Roof rails  
**EX leather option adds:** Leather-trimmed interior • Heated front seats • Available Honda Satellite-Linked Navigation System<sup>12</sup> • Available Honda DVD Entertainment System<sup>12</sup>





Odyssey EX shown in Sandstone Metallic.





Pilot EX shown in Sage Brush Pearl.



# PILOT



Introducing the all-new 2003 Pilot. It's **designed and built by Honda** for all the opportunities you can dream up. The Pilot can seat up to eight, or haul loads of cargo. Its 240-hp V-6, 5-speed automatic and on-demand 4-wheel-drive system keep your options open. And its long list of amenities means you can **take comfort** in this rugged outdoorsy type.



Get the Honda Satellite-Linked Navigation System on your Pilot EX with the leather trim, and throw your maps away.<sup>12</sup> Pilot's seats easily fold down to create up to **90.3 cubic feet of cargo space**.



Trips will seem shorter if you have a **Honda DVD Entertainment System<sup>12</sup>** in back. It's available on EX models trimmed in luxurious, supple leather, and comes with wireless headphones and remote.



Image courtesy of Universal Studios

**Pilot LX includes:** 240-hp, 3.5-liter, 24-valve VTEC V-6 engine • 5-speed automatic transmission • Variable Torque Management® 4-wheel drive (VTM-4™) • 4-wheel independent suspension • ABS • Front and rear air conditioning • Power windows, mirrors and door locks • Cruise

control • AM/FM/CD audio system w/4 speakers • Front side airbags  
**EX adds:** Front and rear synchronized automatic climate control • AM/FM/CD/cassette audio system w/7 speakers • Security system w/remote entry • Driver's seat w/8-way power adjustment and lumbar

support • 2nd-row fold-down activity tray • Alloy wheels  
**EX leather option adds:** Leather-trimmed interior and door panels • Leather-wrapped steering wheel • Available Honda Satellite-Linked Navigation System<sup>12</sup> • Available Honda DVD Entertainment System<sup>12</sup>





# CR-V



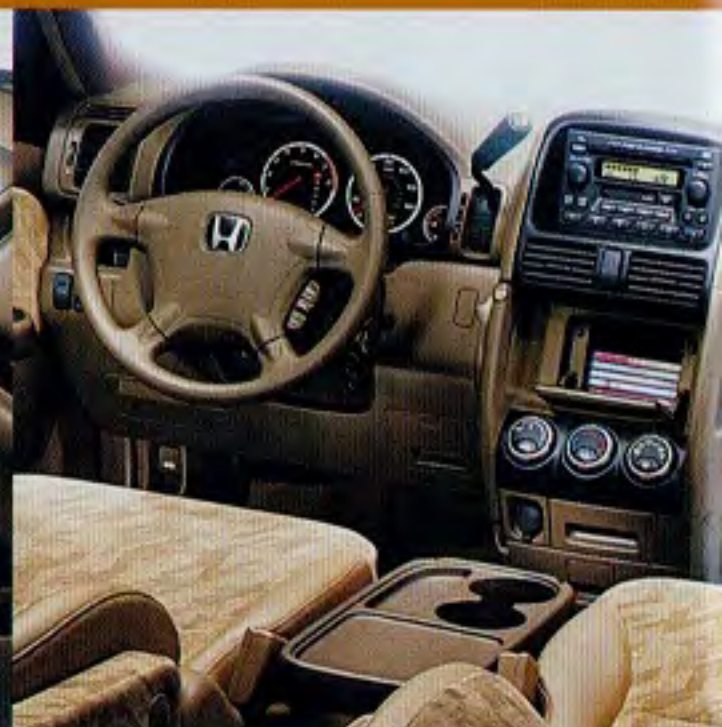
You don't have to leave a thing behind, thanks to CR-V's **ample storage**. And its forward-thinking design includes features like large climate-control switches you can operate even with gloves on.



If you do lots of stuff, the CR-V is here to help you do it. Its exceptional versatility lets you **load it up** with whatever and escape. Bring along friends, because it seats five. Available CR-V models come with the fully automatic **Real Time<sup>®</sup> 4WD** system to give you extra confidence and control. And it's all wrapped in a stylish, refined package.



CR-V's **smart rear seat** slides, splits, folds and tumbles forward to help create space for bulky items like two bikes with their front wheels on. And the cargo floor can even become a picnic table.



**CR-V 2WD LX includes:** 160-hp, 2.4-liter, 16-valve i-VTEC engine  
• 4-speed automatic transmission  
• 4-wheel independent suspension  
• Variable-assist power rack-and-pinion steering • Air conditioning w/air-filtration system • Power windows, mirrors and door locks

• Cruise control • AM/FM/CD/cassette audio system w/4 speakers  
• 60/40 split rear sliding fold and tumble forward seats • Waterproof rear storage well • Immobilizer Theft-Deterrent System  
**4WD LX adds:** RealTime 4WD • 5-speed manual transmission

**4WD EX adds:** Anti-lock braking system (ABS) • 15" alloy wheels  
• Power moonroof w/tilt feature • AM/FM/ 6-disc in-dash CD/cassette audio system w/6 speakers • Remote entry system • Front side airbags • Privacy glass (rear door and quarter-windows)





CR-V 4WD EX shown in Satin Silver Metallic.





Element prototype shown in Satin Silver Metallic.





Element prototype shown.

Presenting the new Honda mega-functional adventure tool. It's the Element, just the thing to partner up with if you want to get all the fun out of life you can. Its **side cargo doors** and versatile rear seats let you load it up in no time. It cleans up quick inside and out for night duty. And you can even get it with 4WD.<sup>13</sup> Look for it in winter 2002.



Not only does it let in the light, but the **removable skylight** on 4WD models can also let in big volumes of fresh air. Plus, you can just flatten all the seats, lie back and have a look at what's in the sky.



Element's interior adapts to whatever you're up to. Its **removable flip-up rear seats** let you load plenty of stuff that has wheels, skags, rods, fins, flaps—got any ideas? The Element is ready to go.



**Element DX includes:** 160-hp, 2.4-liter, 16-valve i-VTEC engine

- 5-speed manual transmission
- Available 4-speed automatic
- Available Real Time 4WD and removable skylight w/tilt feature
- 4-wheel independent suspension
- Driver's seat w/manual height

- adjustment • Fold-flat seats
- Removable flip-up rear seats • Urethane-coated utility floor • 110,000-mile tune-up interval<sup>8</sup> • For Extreme Conditions (FXC™) water-resistant seat fabric<sup>14</sup> • Roof-mounted antenna • Rear privacy glass • Console-mounted shifter

**EX adds:** 270-watt AM/FM/CD audio system w/6 speakers and subwoofer • Cruise control

- Available side airbags • Air conditioning w/air filtration • Anti-lock braking system (ABS)
- MP3/digital media auxiliary jack • Alloy wheels