

2014
CADILLAC XTS





IT IS PERHAPS THE SMALLEST SPACE
KNOWN TO MAN.

THAT RAREFIED SLIVER BETWEEN THE GOOD AND THE TRULY GREAT.
THERE'S NO MAP TO HELP YOU FIND THIS ELUSIVE PLACE. THE ONLY
WAY TO GET THERE IS SIMPLY TO BELIEVE YOU CAN.

*At Cadillac, we've set out to create our own uniquely
American breed of extraordinary. It's why we've created our own daring
school of design that bends steel way beyond its comfort zone. It's why
we've pushed technology two generations ahead by pioneering a bold
new way for drivers to intuitively access entertainment and information
with the flick of a finger. And why, in everything from safety
to performance, we're setting the standard.*

*BOLD. DARING. ORIGINAL. These are the kinds of luxury vehicles we
build. It takes tenacity, a refusal to leave well-enough alone. That is the
difference between good and great. That is the difference between
just making luxury vehicles, and making Cadillacs.*

Cadillac



HIGHLIGHTS 08
EXTERIOR DESIGN 12
LIGHTING 16
INTERIOR DESIGN 22
CUE 28
SAFETY 34
PERFORMANCE 40
COLLECTIONS 44
WHEELS 54
XTS FEATURES AND OPTIONS 58

STATE OF THE ART
MEETS HIGH ART.





THE FUTURE IS HERE.
AND IT'S EFFORTLESS.

Its distinctive, sculpted lines hold immense visual energy and hint at something equally captivating: a newly available 410 HP Twin Turbo V6 that delivers a new level of invigorating performance. Inside the meticulously crafted cabin, technology steps to the forefront with the ingenious CUE¹ driver interface. And, thanks to its revolutionary dual-mode Magnetic Ride Control suspension and Brembo[®] front brakes, the XTS delivers the perfect balance between agility and composure. The intuitive, invigorating XTS. It's the return of life lived large.

1. Full functionality requires compatible Bluetooth[®] and smartphone. Some devices require USB connectivity.

INDIVIDUALLY,
ITS INNOVATIONS ARE INGENUOUS.
TOGETHER, THEY'RE UNPRECEDENTED.

XTS PREMIUM COLLECTION / Caramel with Jet Black accents



AVAILABLE LED SIGNATURE LIGHTING WITH INTELLIBEAM



AVAILABLE AUTOMATIC PARKING ASSIST



CUE

The XTS redefines the principles of what's possible, beginning with the groundbreaking CUE that brings the intuitive control of smartphones and tablets conveniently to the road. It's so advanced, it even senses your hand as it approaches, displaying relevant information and providing tactile feedback from its brilliant touch screen. The inspired thinking also extends to available XTS safety technologies like its perimeter warning that helps alert you to obstacles and hazards in your path. There's also the convenience of new Automatic Parking Assist. Once activated, this available system will locate a suitable parking spot and then help you parallel park your car. Under the artfully sculpted hood, the acclaimed 3.6L direct-injection V6 delivers a refined 305¹ HP. For an extra measure of performance, a new Twin Turbo V6 is available and delivers a potent 410 HP. Putting all this power where you need it, when you need it, are available All-Wheel Drive (standard on Twin Turbo models) and the rear electronic Limited-Slip Differential (eLSD).



Where is it written that head-turning presence and formidable performance be restricted only to two-door coupes? The chiseled, angular skin of the XTS was designed not only to turn heads, but also to slice through the wind, helping improve performance and mitigate noise. Its iconic Cadillac grille is available in three dramatic designs. In each case, the shape is integrated into the overall design so seamlessly, the final effect is nothing short of stunning. Of course, its assertive stance and striking vertical rear taillamps make a bold statement, but when you spot the massive front Brembo® brakes lurking behind the spoked alloys, it becomes clear this is a Cadillac to be reckoned with.

INSPIRING

DESCRIBES MORE THAN THE DRIVE.



WHEN IT COMES TO THE DETAILS,
WHERE DO YOU STOP?
YOU DON'T.



BRILLIANT HEADLAMP TECHNOLOGY
The High-Intensity Discharge (HID) headlamps are available with Adaptive Forward Lighting that swivels the headlamps in the direction you're steering. The brilliance of IntelliBeam is also available. This technology automatically switches between low and high beams when oncoming headlamps are sensed, or when taillamps are detected in front of you.



DYNAMIC 20" WHEELS
Featuring a brilliant, polished finish and chrome inserts, these 20" Platinum Collection wheels are the ideal complement to the XTS.



BOLD, CONFIDENT GRILLE
The aerodynamic front is discerningly accentuated with chrome and balanced by a subtle piano-black finish, delivering a sleek and striking appearance. (Standard grille shown.)



ROOM WITH A VIEW
A third window was engineered behind each rear door. This design not only provides an overall feeling of even more space, but also gives rear seat passengers a clearer view.

A PERFORMANCE THIS IMPRESSIVE
DESERVES LIGHTING TO MATCH.



ILLUMINATED DOOR HANDLES

Refined details are everywhere, right down to the available illuminated door handles. More than an accent, their soft glow makes them easier to locate. Once you are in the vehicle, they return to their nonilluminated state.



PUDDLE LAMPS

Subtle lamps located under the outside mirrors cast a light near the entrance of the car as part of the carefully choreographed lighting sequence, so your path is well lit.



ILLUMINATED SILL PLATES

In the XTS, every detail was considered. For example, upon opening either front door in the Platinum Collection, backlit sill plates are an inviting touch.



AMBIENT INTERIOR LIGHTING

Available ambient lighting complements the LED spotlights under the door pulls in front, in the foot wells and from the overhead console. Casting a soft glow under the wood trim on the dash and front door panels, it adds intrigue to the contemporary design of the cabin.

With the XTS setting the perfect stage for an exhilarating performance, it's fitting the lighting was designed as if it were a contemporary theater. Every piece of illumination was choreographed with a specific task in mind, whether it is to draw your eye to the meticulous details or to add illumination to key areas. Taken individually, each light is impressive in its own right, like the signature Cadillac light pipe technology integrated into the headlamps and taillamps. They form a razor-thin blade that is clearly evident at night—making your vehicle visible and distinctive from any angle. When backing up, there's a lower-mounted reverse lamp to improve your view. Even the available illuminated exterior door handles add a purposeful touch at night.

The XTS acknowledges your presence even before you take a seat. As you approach, lighting elements in the headlamps, door handles and side mirrors are choreographed to illuminate your way.





*EVEN THE FINE POINTS HAVE
FINER POINTS.*

The first moments behind the wheel are, in many ways, the most inspiring—which is why we designed the XTS to feel more like a perfectly tailored garment. You wear it, feel it, think it. There's the wraparound instrument panel that blends seamlessly into the upper doors, creating an uninterrupted sense of spaciousness. To that, add fine leather seating surfaces, exotic woods and brushed metal that work in concert to further accentuate the cabin. Even the spacious backseat with unsurpassed-in-class rear legroom is slightly elevated so every passenger is afforded a seat with a view. Complementing rear-seat comfort is a new fold-down armrest with integrated controls for both the radio and available power sunshade. It may feel as if every interior detail was designed to meet your personal specifications. Perhaps that's because it was.

THE LINING OF A SUIT.
THE MOVEMENT OF A WATCH.
TRUE LUXURY CAN OFTEN BE FOUND
ON THE INSIDE.

The meticulous attention to detail continues into the striking cabin. Intuitive controls are complemented with impeccably detailed materials like lustrous exotic wood that trims the steering wheel and is carefully laid throughout the center console. Laminated front side glass and triple door seals work in tandem to help deflect noise before it enters the cabin. And to optimize seat comfort, pressure-mapping technology was used extensively to design the contoured front seats. Proof that in the XTS, technology definitely comes with a sophisticated side.

FULL-LEATHER SEATS

Semi-aniline full-leather seating is exclusive to Platinum Collection models. This unique, luxurious leather is renowned for its ultra-soft feel and refined appearance.



THE ART OF DETAIL

The closer you look, the better it gets. Leather surfaces, contrasting stitching, beautifully grained woods and brushed metal all come to life in the XTS.



INTELLIGENTLY DESIGNED STORAGE

From the smartly placed mobile device holder to the center control panel that opens, every millimeter of the XTS reveals yet another brilliantly engineered space.

THE SOUND DOESN'T SURROUND YOU.

IT IMMERSSES YOU.

BOSE PERSONAL SURROUND SPEAKERS

14-SPEAKER BOSE STUDIO SURROUND SOUND SYSTEM

Your choice seats to a remarkable musical event are ready. Deep, powerful lows. A wide, spacious soundstage. All the emotion and dynamics of a live performance now rendered in a remarkable surround sound experience. And it's all brought to you by the 14-speaker Bose® Studio Surround® sound system in the Premium and Platinum Collections. Customized for the unique acoustic environment of the XTS, it uses two Personal® surround speakers on the top of each front seat to provide an immersive and individual sound experience. Of course, no matter where you are sitting, you'll enjoy rich, detailed sound that seems to extend well beyond the space. With its proprietary speakers, powerful amplifier and AudioPilot® noise compensation technology, this system puts you in the middle of the music.

INTELLIGENCE,
IN ITS SIMPLEST FORM.



The intuitive CUE¹ driver interface blends innovative technology with highly intelligent design to create an experience that's as effortless as it is advanced. It easily accesses every contact and song on up to ten Bluetooth[®]-enabled smartphones.¹ The available 3-D GPS navigation system² has

map-integrated Doppler weather³ reports. CUE also streams Pandora Radio⁴ and lets you preset up to 60 favorites, including points of interest, addresses, phone numbers, and more. With CUE, the customization and content possibilities are not only endless, but right at your fingertips.

CUE is as intuitive as it is advanced. Spread your fingers to zoom in closer on a map. Swipe to breeze through your music. Simply speak and let the Natural Voice Recognition help you effortlessly place a phone call or change your music.

Considering that it can even detect your hand as it approaches the vibrant 8-inch LCD touch screen, interacting with CUE couldn't be easier. And when an icon is touched, the screen pulses to acknowledge the command, letting you keep your eyes safely on the road. On select models, you can even configure the gauge cluster to find the layout of information that perfectly suits you. With CUE, the future has arrived, and it's better than you could have possibly imagined.

PERFORMANCE GAUGE CLUSTER



ENHANCED GAUGE CLUSTER



BALANCED GAUGE CLUSTER



SIMPLE GAUGE CLUSTER



ONE PART DRIVER INTERFACE, ONE PART ENTERTAINMENT SYSTEM, CUE REIMAGINES THE CONNECTION BETWEEN CAR AND DRIVER.



CONVENIENCE

A clean, uncluttered design pairs with Natural Voice Recognition for effortless interaction. CUE is as easy and intuitive to use as your smartphone or tablet.



CONTROL

Seemingly instinctive, CUE uses proximity-sensing technology to detect your hand as it nears the LCD touch screen. Once there, press an icon and the screen pulses to acknowledge your prompt, helping you to stay focused on the road.



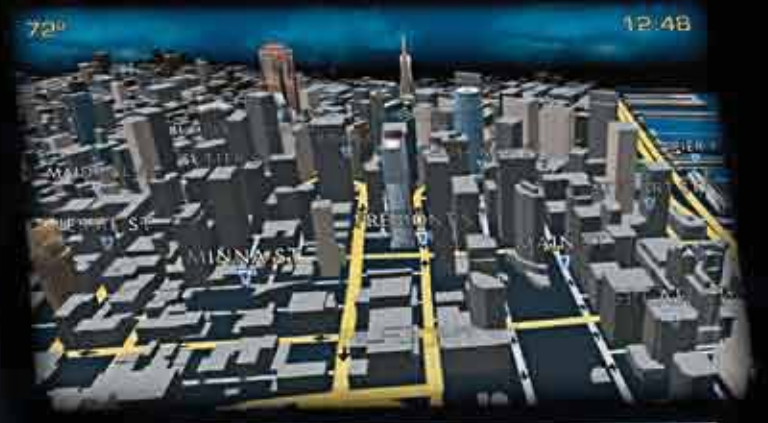
CONNECTIVITY

Available 3-D GPS navigation¹, Doppler-radar weather², Pandora Radio³, Bluetooth[®] connectivity, and more.

1. Map coverage available in the United States, U.S. Virgin Islands, Puerto Rico and Canada. 2. Requires active SiriusXM subscription. 3. Data plan rates apply.



2564 mi



VOLUME

OFF

AUTO

VISION,
IN EVERY SENSE OF THE WORD.



The best safety features are those that help you avoid a collision in the first place. That's why the XTS offers the latest innovations in driver awareness and assistance to help inform you of potential hazards you may not even see. Using radar technology and strategically placed cameras, the XTS is ever-vigilant with its available Forward Collision Alert, Lane Departure Warning, Side Blind Zone Alert,¹ Rear Cross-Traffic Alert, and Front and Rear Park Assist. Even the available Adaptive Cruise Control² uses radar to maintain a preset

distance between you and other vehicles. And the available Automatic Front and Rear Braking detects large objects you may not see to help prevent certain low-speed collisions by applying the brakes for you. As an alternative to warning chimes, the XTS offers a Safety Alert Seat that pulses, giving you instant, tactile feedback to alert you of select dangers on the road. With all of this, it's no surprise that the 2013 XTS was awarded a 5-Star Overall Vehicle Score³ for safety.

1. Before making a lane change, always check the SBZA display and the side and inside mirrors, look over your shoulder for vehicles and hazards, and activate your turn signal. 2. Adaptive Cruise Control is no substitute for the driver's personal responsibility to operate the vehicle in a safe manner. The driver needs to remain attentive to traffic and road conditions and provide the steering, braking or other inputs necessary to retain control of the vehicle. 3. Government 5-Star Safety Ratings are part of the National Highway Traffic Safety Administration's (NHTSA's) New Car Assessment Program (www.SaferCar.gov).

ADVANCED SAFETY

YOU'LL FEEL GOOD ABOUT.



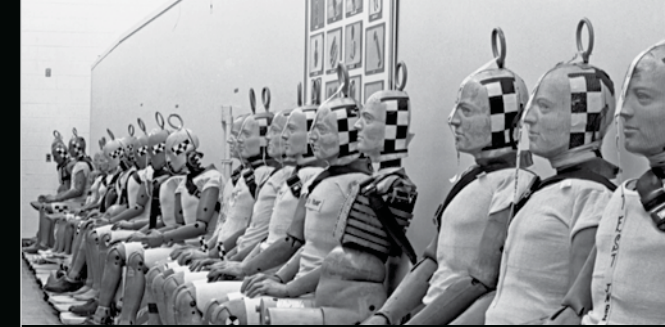
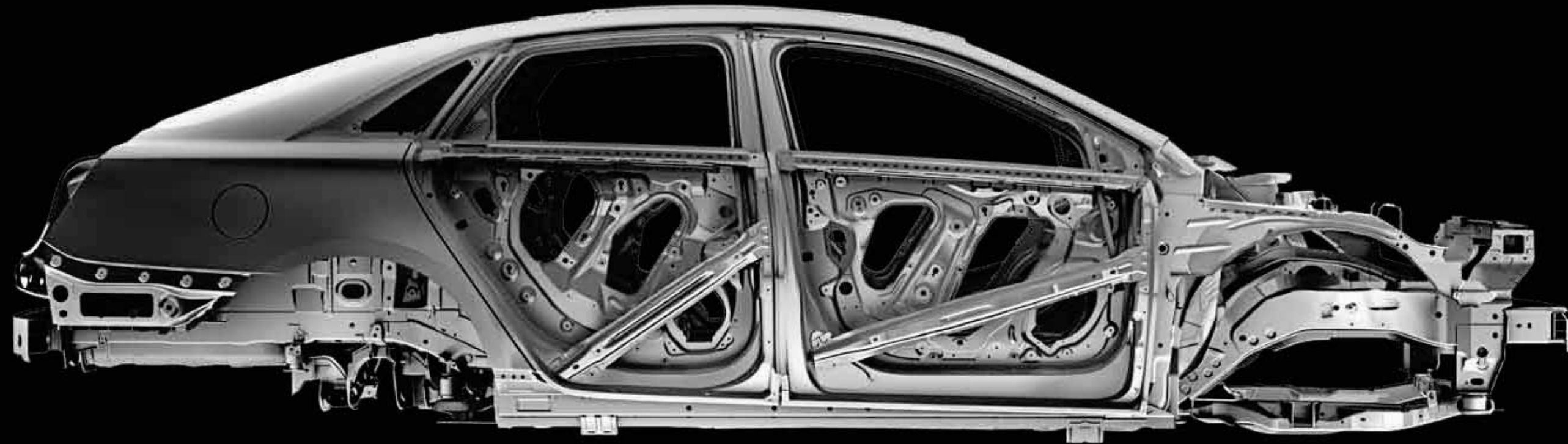
With select models featuring ten ultrasonic motion detectors, six Doppler radar sensors and a high-definition Smart Camera taking twelve pictures every second, the XTS doesn't just watch the road. It analyzes it. Cross-references it. Writes a dissertation. And then leaves you with the condensed version. All through pulses in your driver's seat.

Why pulses? Because on the road there are many visual and auditory signals vying for your attention. That's why we offer safety technology you can actually feel with the available Safety Alert Seat. By sending immediate pulses through the seat cushion, either right or left, or simultaneously, this patented technology quickly and intuitively warns you of the direction of a potential hazard, increasing your confidence as you continue on your way.

From where you sit, it is just another example of how innovative XTS safety technology leads you confidently down the road ahead.

IT'S AS DEFENSIVE

AS IT IS DYNAMIC.



CRASH-TEST TECHNOLOGY

Today's new "hyper-tech" dummies record and transmit crash data 10,000 times a second. More than 200 crash-test dummies of all shapes and sizes are wired with sensors that tell safety engineers how much and what kind of forces they endure during crash tests. This helps improve the safety of every Cadillac made.



AUTO-DRY BRAKES

It makes perfect sense—dry brakes stop faster than wet brakes. That's why we designed the XTS so that the available Rainsense wipers and Auto-Dry brakes work together. After the Rainsense wipers are activated, the brake pads are positioned closer to the rotor, sweeping away the moisture and helping to improve braking performance. Visit cadillac.com/autodry for further details.

It starts with a protective safety cage constructed with high-strength steel alloys for exceptional rigidity and strategically placed crumple zones. Then we add preventive safety features like the StabiliTrak Electronic Stability Control System and a sophisticated antilock braking system (ABS) with Electronic Braking Force Distribution that helps balance stopping power between the front and rear brakes. There's also the confidence that comes with ten standard airbags¹ and a complimentary one-year subscription to OnStar² Automatic Crash Response. In a crash, built-in sensors in your vehicle can automatically send an alert to an OnStar Advisor who can contact you in your car.

1. Always use safety belts and the correct restraint for your child's age and size. Even in vehicles equipped with the Passenger Sensing System, children are safer when properly secured in a rear seat in the appropriate infant, child or booster seat. Never place a rear-facing infant restraint in the front seat of any vehicle equipped with a passenger air bag. See the Owner's Manual and child safety seat instructions for more safety information. 2. Visit onstar.com for details and system limitations. OnStar acts as a link to existing emergency service providers.

POWER THAT
APPEALS TO YOUR LEFT BRAIN
AND RIGHT FOOT
IN EQUAL MEASURES.



XTS PLATINUM COLLECTION WITH TWIN TURBO V6 / Graphite Metallic

Its performance matches its dramatic presence. A 305 HP 3.6L direct-injection engine is standard on every XTS and is renowned for its smooth, refined power. Ignite the newly available 410 HP Twin Turbo V6, and you'll experience an entirely new level of exhilaration. At its heart is a refined turbocharging system that combines Variable Valve Timing

and precise direct-injection to deliver outstanding performance by any measure. Either engine you select is coupled to an advanced Gen-II automatic transmission that delivers crisp, smooth shifts in step with the engine's impressive output. When you call for power, the XTS answers immediately.



NEW TWIN TURBO V6 POWER

A technological masterpiece, twin turbochargers help the 3.6L direct-injection V6 engine deliver a potent 410 HP, setting a new standard in XTS performance.



DRIVER SHIFT CONTROL

The electronically controlled 6-speed automatic transmission incorporates steering wheel-mounted paddle shifters that enable clutchless manual shifting. A quick tap is all that's required for a smooth, crisp upshift or downshift.

*THE ROAD MEANDERS.
THE XTS DOES NOT.*

Any luxury sedan can hold its own on a long stretch of interstate. However, when the pavement twists, writhes and dips, the XTS quickly separates itself from everything else on the road. With its advanced suspension and precisely tuned steering, it delivers a perfectly connected and sophisticated ride. Torque-vectoring All-Wheel Drive is available and features advanced software that manages torque front-to-rear, while the rear electronic Limited-Slip Differential (eLSD) controls torque side-to-side along the rear axle, putting power where you need it most for a surefooted grip on the pavement. The XTS also features revolutionary dual-mode Magnetic Ride Control that reacts in the blink of an eye to changing demands, while its advanced HiPer Strut technology helps the tires remain keyed to the surface. Combined with rear auto load-leveling suspension and speed-sensitive steering, the XTS handling is nothing short of a revelation.



MAGNETIC RIDE CONTROL

Revolutionary dual-mode Magnetic Ride Control reads the road up to 1,000 times per second and seamlessly adjusts damping for agile handling and a controlled ride.

THE PLATINUM COLLECTION:

WE DON'T PLAY GAMES
WHEN IT COMES TO LUXURY.
UNLESS, OF COURSE, IT'S LEAPFROG.

The XTS Platinum Collection takes all the innovation, design and especially the luxury of the XTS to an even higher level. Leather and exotic wood accent the instrument panel, floor console, and even the doors. Semi-aniline full-leather seats are not only exceptionally supple, but meticulously detailed with subtle hints of contrasting¹ color. But luxury is just one of the many ways the XTS Platinum goes above and beyond to deliver an exhilarating driving experience. Newly available with this Collection is the Twin Turbo V6 engine. A technological masterpiece, this engine delivers 410 HP—a phenomenal figure that ensures that whatever situation you find yourself in, vast reserves of power and acceleration are available whenever you need them.



ULTRAVIEW SUNROOF

Spanning both rows of seats and giving the XTS an even more spacious feel, this sunroof doesn't so much open as unveil.



LEATHER-WRAPPED INTERIOR

Leather wraps virtually every surface you touch and feel in the XTS, enhancing the experience before you even start the engine.



ADAPTIVE CRUISE CONTROL

Progressive technology in the XTS affords an assured and comfortable journey with available Adaptive Cruise Control² as well as Automatic Front and Rear Braking.



EXCLUSIVE GRILLE

The strong lines and refined mesh combine to make a statement that is found only on the Platinum Collection.

1. Jet Black with Light Wheat accents interior only. 2. Adaptive Cruise Control is no substitute for the driver's personal responsibility to operate the vehicle in a safe manner. The driver needs to remain attentive to traffic and road conditions and provide the steering, braking or other inputs necessary to retain control of the vehicle.

THE PREMIUM COLLECTION:

PREDICTIONS SEEM FRIVOLOUS WHEN YOU'VE ALREADY
SEEN THE FUTURE.

It's as close as you can get to a personalized fit. Tri-zone climate control means every inch of the car is perfectly heated or cooled. The reconfigurable gauge cluster allows you to toggle between four distinct gauge cluster designs and choose which design perfectly suits your driving experience. And the richly detailed interior comes complete with a 14-speaker Bose® Studio Surround® sound system. Even the newly available 410 HP Twin Turbo V6 is just another example of how we've pushed refinement and performance to a whole new level.



HEAD-UP DISPLAY

Using head-up display technology similar to that found in fighter jets helps keep your eyes on the road by projecting customizable key driving and entertainment information in full color at eye level.



BRILLIANCE THAT LOOKS AHEAD

IntelliBeam enhances the visionary technology of HID headlamps with Adaptive Forward Lighting. This technology turns the high beams on automatically and switches to low beams temporarily when oncoming headlamps or taillamps are detected.



BOSE STUDIO SURROUND SOUND SYSTEM

Your XTS doubles as an intimate concert venue with the 14-speaker Bose Studio Surround sound system that includes two Personal® surround speakers on the top of each front seat.



NAVIGATION SYSTEM

Convenience is within easy reach, thanks to the navigation system.¹ Featuring easy, intuitive voice guidance, 3-D GPS color imaging with integrated Doppler weather,² and more, it's your on-the-road control center.

THE LUXURY COLLECTION:

HOW CLOSE DID WE COME TO THE ONE IN
YOUR IMAGINATION?

Step inside, and you'll find premium wood accents highlighting the instrument panel, door and shifter. With a Memory Package for two drivers that recalls presets for the power driver seat, passenger seat, outside mirrors and the steering column, the XTS stands ready no matter who holds the key. Heated, ventilated front seats with cushion-length adjusters and heated outboard rear seats mean everybody in the cabin is comfortable, no matter how long the drive or what the temperature is outside. Of course, it's all complemented by dramatic ambient lighting. Even the dual-exhaust outlets are beautifully integrated into the fascia to complete the modern and refined look. Proof that luxury and advanced design can coexist in perfect harmony.



PREMIUM WOOD TRIM

Eye-catching wood sets the tone for the interior of the XTS with its deep, rich color. The beautiful grain appears to change with the lighting, adding an extra touch of allure.



INTEGRATED EXHAUST

The dual-exhaust outlets are integrated into the rear fascia to ensure the impeccable lines of the XTS remain unbroken.



EXCEPTIONAL SEAT COMFORT

Ventilated front seats with cushion-length adjusters are a welcome rejuvenation on hot days and during extended journeys.



HEATED STEERING WHEEL

The perfect antidote to a cold winter morning.



SCAN TO DOWNLOAD
the myCadillac showroom app from iTunes.

PAINT FINISHES

TINTCOAT

A premium 2-layer paint application with the addition of a tinted clearcoat, lending the finish an extra depth and brightness.

TRICOAT

A meticulous 3-layer process that results in a dramatic hue-shifting color.



RADIANT SILVER METALLIC



WHITE DIAMOND TRICOAT¹



SILVER COAST METALLIC²



CRYSTAL RED TINTCOAT¹



GRAPHITE METALLIC



BLACK RAVEN



BLACK DIAMOND TRICOAT¹



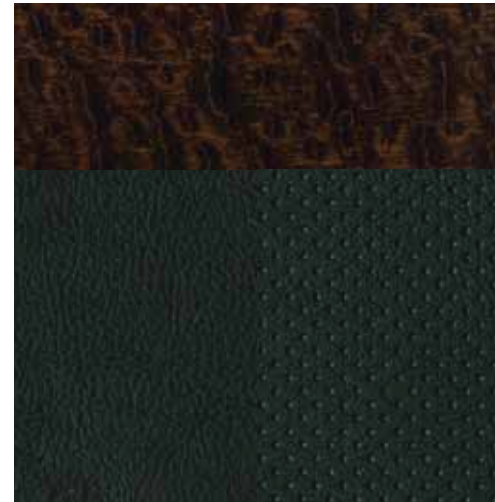
SAPPHIRE BLUE METALLIC

1. Available at extra cost. 2. Not available with Medium Titanium / Jet Black interior.

XTS / Jet Black¹



Nutella Sapele



XTS LUXURY COLLECTION / Shale with Cocoa accents²



Nutella Sapele



XTS PREMIUM COLLECTION / Caramel with Jet Black accents³



Raven Sapele



XTS PREMIUM COLLECTION / Medium Titanium with Jet Black accents⁴



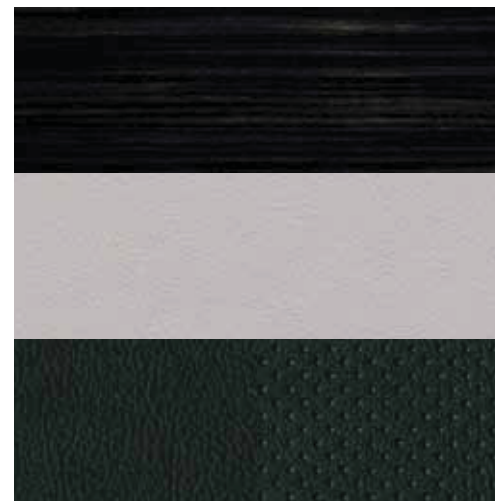
Raven Sapele



XTS PLATINUM COLLECTION / Jet Black with Light Wheat accents⁵



Lineate



XTS PLATINUM COLLECTION / Light Platinum with Dark Urban and Cocoa accents⁵



Nutella Sapele with inlay



1. Jet Black available on XTS, XTS Luxury and XTS Premium Collections.
2. Shale with Cocoa accents available on XTS, XTS Luxury and XTS Premium Collections.
3. Caramel with Jet Black accents available on XTS Luxury and XTS Premium Collections.
4. Medium Titanium with Jet Black accents available on XTS Luxury and XTS Premium Collections.
5. XTS Platinum Collection only.



**20" CAST ALUMINUM
WITH POLISHED FINISH
AND CHROME INSERTS**

*Platinum Collection, includes
P245/40R20 all-season tires*



**19" CAST ALUMINUM WITH PREMIUM
MULTI-COAT PAINTED FINISH AND
CHROME INSERTS**

Includes P245/45R19 all-season tires



**19" CAST ALUMINUM
WITH POLISHED FINISH**

*Luxury and Premium Collections, includes
P245/45R19 all-season tires*



**20" CAST ALUMINUM WITH PREMIUM
MULTI-COAT PAINTED FINISH**

*Premium Collection option (included on Premium
Collection with Twin Turbo), includes P245/40R20
all-season tires*



CADILLAC SHIELD

THE STANDARD OF LUXURY OWNERSHIP



WARRANTY PROTECTION

Cadillac's 6-year or 70,000-mile¹ Powertrain Warranty offers more years and miles standard than BMW and Mercedes-Benz. In addition, our 4-year or 50,000-mile¹ Bumper-to-Bumper Warranty covers repairs on your entire vehicle, including parts and labor, to correct problems in materials or workmanship.



PREMIUM CARE MAINTENANCE

Standard on all 2011 and newer vehicles, Cadillac's Premium Care Maintenance program covers routine oil changes, tire rotations, certain air filter replacements and a thorough multipoint vehicle inspection for 4 years or 50,000 miles.² Mercedes-Benz and Lexus programs do not.



The standard one-year Directions and Connections[®] Plan allows you to push one button to connect with a live Advisor to find the things and places you want. Get directions or a diagnostics check while you drive. Make calls safely with both hands on the wheel and control your vehicle with the RemoteLink³ mobile app. And as always, get help immediately in a crash or an emergency. These are just a few examples of the level of personal service we think you deserve as a Cadillac owner.



SECURITY BY ONSTAR

If you've reported your Cadillac stolen, OnStar⁴ can use GPS technology to help authorities quickly locate and recover it. An OnStar Advisor can further assist authorities by sending a remote Stolen Vehicle Slowdown[®] signal to your vehicle to slow it down. Advisors can also enable a Remote Ignition Block, making it impossible to restart a stolen vehicle once it has been turned off.



DIAGNOSTICS BY ONSTAR

With best-in-class diagnostics from OnStar⁴, maintaining your Cadillac can be as simple as checking your e-mail or your OnStar RemoteLink^{™3} mobile app. Every month, you can receive an e-mail with the status of key operating systems or push your OnStar button for a real-time diagnostics check on demand.



ROADSIDE ASSISTANCE

Cadillac offers more years of Roadside Assistance standard than any leading luxury brand, with services for 6 years or 70,000 miles.⁵ The program provides lockout, towing, refueling, Dealer Technician Roadside services and more.



COURTESY TRANSPORTATION

This Cadillac program provides alternate transportation and/or reimbursement of certain transportation expenses if your Cadillac requires warranty repairs for 6 years or 70,000 miles.⁵ That is more years of service standard than any luxury automaker.



NAVIGATION BY ONSTAR

Just push the OnStar⁴ button and an Advisor can download voice-guided turn-by-turn directions to your Cadillac, and a voice will call out every turn or send them to your navigation system, if equipped. You can also plan routes using MapQuest.com[®] and send them to your Cadillac.



CONNECTIONS BY ONSTAR

Available Hands-Free Calling capability from OnStar⁴ allows you to make and receive calls safely from your Cadillac. With the OnStar RemoteLink³ mobile app, you can access real-time information and control your Cadillac from anywhere you have cell phone service. Now you can even find a destination with RemoteLink³ and send directions right to your vehicle.



EMERGENCY BY ONSTAR

In most crashes, built-in sensors can automatically alert an OnStar⁴ Advisor who is immediately connected in to your Cadillac to see if you need help sent to your exact location. Other OnStar⁴ emergency services include Injury Severity Predictor and First Assist, which ensure you quickly get the help you need when seconds matter most. All Cadillac models come with 1 year of OnStar service standard.



MYCADILLAC APP



The ingenuity of the XTS doesn't stop with the vehicle. As a Cadillac owner, an advanced complimentary app is available for your new car. From virtually anywhere at anytime, a few taps of your finger on your iPhone or Android smartphone let you access features like parking reminders, Roadside Assistance, and more. Plus, in conjunction with the OnStar RemoteLink app, you'll have the ability³ to remotely start your vehicle (when factory equipped) from any place you have cell service, and lock and unlock your doors. In addition, you can access key diagnostic information, including fuel tank level and range, and remaining oil life.

1. Whichever comes first. See dealer for limited warranty details. 2. Whichever comes first. See dealer for select scheduled maintenance details. 3. Available on iPhone, Android and select BlackBerry devices. Services vary by phone, vehicle and conditions. Requires an active OnStar subscription. 4. Visit onstar.com for coverage map, details and system limitations. Services vary by model and conditions. OnStar acts as a link to existing emergency service providers. 5. Requires active OnStar subscription.

58 XTS FEATURES AND OPTIONS

DIMENSIONS	FRONT	REAR	CAPACITIES	
Head room	39.0"	37.8"	Cargo volume	18.0 cu. ft.
Hip room	55.1	54.3	Seating	5
Leg room	42.1	40.0	Fuel, FWD (gal., approx.)	18.6
Shoulder room	57.9	56.3	Fuel, AWD (gal., approx.)	19.5



	STANDARD	LUXURY	PREMIUM	PLATINUM
DRIVETRAIN				
3.6L DIRECT-INJECTION V6 VVT ENGINE With 305 HP ¹ @ 6,800 rpm and 264 lb.-ft. of torque @ 5,300 rpm	•	•	•	•
3.6L TWIN TURBO DIRECT-INJECTION V6 VVT ENGINE With 410 HP @6,000 rpm and 368 lb.-ft. of torque @ 2,000 rpm. Requires AWD			○	○
FRONT-WHEEL DRIVE	•	•	•	•
ALL-WHEEL DRIVE, ADVANCED WITH TORQUE VECTORING Includes electronic limited-slip differential (eLSD)		○	○	○
6-SPEED AUTOMATIC TRANSMISSION Includes steering wheel-mounted paddle shifting	•	•	•	•
ENGINE BLOCK HEATER	○	○	○	○
CHASSIS AND SUSPENSION				
SUSPENSION, 4-WHEEL INDEPENDENT Front: HiPer strut, direct-acting stabilizer bar; Rear: Independent linked H-arm with air springs	•	•	•	•
BRAKES Brembo® front, 4-wheel vented disc with anti-lock system, Duralife, FNC rotors, featuring AutoDry and Intelligent Brake Assist Premium-finish calipers	•	•	•	•
ELECTRONIC STABILITY CONTROL SYSTEM, STABILITRAK	•	•	•	•
EXHAUST Dual stainless steel, hidden, turn-down Integrated outlet design	•	•	•	•
MAGNETIC RIDE CONTROL Dual-mode, featuring Tour and Sport modes	•	•	•	•
STEERING Speed-sensitive, variable-effort power rack-and-pinion Electric (Requires FWD)	•	•	•	•
TRACTION CONTROL All-speed with brake and engine intervention	•	•	•	•
EXTERIOR FEATURES				
AUTOMATIC PARKING ASSIST (requires FWD)		•	•	•
CAPLESS FUELING	•	•	•	•
DRIVER AWARENESS PACKAGE Lane Departure Warning, Side Blind Zone Alert? Rear Cross Traffic Alert, Forward Collision Alert and Safety Alert Seat		○	•	•
DRIVER ASSIST PACKAGE Adaptive Cruise Control ³ , Automatic Collision Preparation and Automatic Front/Rear Braking	•	•	○	•
KEYLESS ACCESS Passive entry on both front and rear doors	•	•	•	•
LIGHTING High-Intensity Discharge (HID) headlamps, Twilight Sentinel automatic operation, flash-to-pass and cornering lamps IntelliBeam Adaptive Forward Lighting Daytime Running Lamps Auxiliary Daytime Running Lamps, on lower fascia LED taillamps, center high-mounted stop lamp (CHMSL) Illuminated door handles Puddle lamps	•	•	•	•
MIRRORS Driver and passenger, heated, power-adjustable, manual folding, turn signal indicator Driver-side auto-dimming	•	•	•	•
TIRE, COMPACT SPARE	○	○	○	○
TIRE INFLATION KIT	•	•	•	•
TIRE PRESSURE MONITORING SYSTEM	•	•	•	•
WHEELS 19" cast aluminum with premium multi-coat painted finish and chrome inserts 19" cast aluminum with polished finish 20" cast aluminum with premium multi-coat painted finish 20" cast aluminum with polished finish and chrome inserts	•	•	○ ⁴	•
WINDSHIELD WIPERS, AUTOMATIC RAINSENSE With moisture detection		•	•	•
INTERIOR FEATURES				
ADAPTIVE REMOTE START Activates heated/ventilated seats (if equipped), climate control system and rear defroster	•	•	•	•
AIR FILTRATION SYSTEM Automatic air circulation/air quality	•	•	•	•
AIRBAGS⁵ Dual-stage frontal, side impact, knee and head curtain side impact for driver and front passenger, head curtain and seat side impact for outboard rear passengers Passenger Sensing System, front passenger seat	•	•	•	•
ARMREST Center front Rear with lockable pass-thru, dual cup holders and storage Rear with audio controls Rear with rear sunshade control	•	•	•	○ ⁶
AUDIO CD/MP3 player 8-speaker Bose® sound system 14-speaker Bose® Studio Surround® sound system HD Radio SiriusXM Radio ⁷ with three trial months	•	•	•	•
BLUETOOTH® Recognizes up to 10 Bluetooth®-enabled smartphones ⁸	•	•	•	•
CARGO NET	•	•	•	•
CLIMATE CONTROL Electronic automatic with individual climate settings	•	•	•	•

	STANDARD	LUXURY	PREMIUM	PLATINUM
Dual-zone for driver and front passenger	•	•		
Tri-zone for driver, front passenger, and rear seating areas			•	•
Rear-window defroster	•	•	•	•
INTERIOR FEATURES (continued)				
CONSOLE, FRONT CENTER With shifter, storage bins, storage tray, dual hidden cup holders; includes dual USB ports, ⁹ SD card slot and auxiliary jack	•	•	•	•
CRUISE CONTROL Electronic, with set and resume speed	•	•	•	•
CUE (CADILLAC USER EXPERIENCE)¹⁰ Information and media control system	•	•	•	•
DOOR LOCKS Power programmable with lockout protection	•	•	•	•
ELECTRONIC PARKING BRAKE	•	•	•	•
ENTERTAINMENT SYSTEM, REAR SEAT Dual DVD players with wireless headphones and remote control			○	○
FLOOR MATS Carpeted front and rear Premium	•	•	•	•
GAUGE CLUSTER With full-color Driver Information Center display Reconfigurable, four theme: Balanced, Enhanced, Performance or Simple	•	•	•	•
GLOVE BOX Electronic push-button opening	•	•	•	•
HEAD-UP DISPLAY Full-color, reconfigurable	•	•	•	•
HEADLINER Microfiber sueded, including sail panels and pillars	•	•	•	•
LEATHER-WRAPPED INSTRUMENT PANEL, DOOR TRIM UPPER AND FLOOR CONSOLE LIGHTING Illuminated entry and courtesy Ambient interior, LED-based instrument panel and front door light pipes; accent spotlights	•	•	•	•
MEMORY PACKAGE Two presets for driver and front passenger seat position, outside mirrors and power rake and telescoping wheel		•	•	•
MIRROR Automatic dimming rearview	•	•	•	•
NAVIGATION¹¹ With voice and text guidance		○	•	•
ONSTAR¹² Standard one-year Directions & Connections Plan	•	•	•	•
POWER OUTLET 110-volt, located on rear of front center console	•	•	•	•
PUSH-BUTTON START Includes two remote transmitters	•	•	•	•
REARVIEW BACKUP CAMERA Includes rearview camera with automatic operation that provides a panoramic rear view with "guidelines" indicating the vehicle's projected path when vehicle is put in reverse	•	•	•	•
RETAINED ACCESSORY POWER Power windows, audio system, mirrors, UltraView sunroof (if equipped) and climate control remain operational after ignition is switched off for 10 minutes or until a door is opened	•	•	•	•
SAFETY BELTS Lap and shoulder belts for all positions with belt-to-seat mounting and pretensioners for driver and front passenger, rear outboard comfort guides	•	•	•	•
SEATING 5-passenger; front bucket Leather seating surfaces Semi-aniline full leather seats 8-way power driver and front passenger seat adjusters, 4-way manual head restraint adjust, 4-way power lumbar control Thigh adjuster, driver and front passenger Heated front and outboard rear Ventilated front Rear, 60/40 split-folding, with rear pass-through, lockable	•	•	•	•
SHIFT LEVER Leather-wrapped Leather-wrapped with wood-accented knob	•	•	•	•
STEERING COLUMN Power-rake wheel, telescoping	•	•	•	•
STEERING WHEEL Leather-trimmed with wood accents; includes fingertip controls for CUE, audio, Bluetooth for phone interface and cruise control Heated	•	•	•	•
SUNSHADE Power, rear window Manual, on each rear side-door window			○	•
THEFT-DETERRENT SYSTEM Engine immobilizer Audible content theft-deterrent system	•	•	•	•
ULTRASONIC PARKING ASSIST Rear Front	•	•	•	•
UNIVERSAL HOME REMOTE, 3-CHANNEL	•	•	•	•
ULTRAVIEW SUNROOF Power, tilt-sliding, electric with express-open/close over front-row seating, and power sunshade		○	○	•
VISORS Driver and front passenger illuminated vanity mirrors	•	•	•	•
WINDOWS Power, with express-up/down, includes rear passenger lockout	•	•	•	•
WOOD TRIM Includes real wood on steering wheel, console and center stack On instrument panel and door trim	•	•	•	•

1. 304 HP on AWD models. 2. Before making a lane change, always check the SBZA display, check the side and inside rearview mirrors, look over your shoulder for vehicles and hazards, and start the turn signal. 3. Adaptive Cruise Control is no substitute for the driver's personal responsibility to operate the vehicle in a safe manner. The driver needs to remain attentive to traffic and road conditions and provide the steering, braking or other inputs necessary to retain control of the vehicle. 4. Standard on 3.6L Twin Turbo Premium Collection. 5. Always use safety belts and the correct child restraint for your child's age and size, even in vehicles with air bags. Even in vehicles equipped with Passenger Sensing System, children are safer when properly secured in the rear seat, in an appropriate infant, child or booster seat. Never place a rear-facing infant restraint in the front seat of any vehicle equipped with an active frontal air bag. See the vehicle Owner's Manual and child safety seat instructions for more safety information. 6. Included with power rear window sunshade and manual rear side-door window sunshade. Also included with rear seat entertainment system. 7. Requires a subscription, sold separately by SiriusXM after the trial period. SiriusXM Radio service only available in the 48 contiguous United States and the District of Columbia. For more information and to view Customer Agreement, visit siriusxm.com. 8. Go to gm.com/bluetooth to find out which phones are compatible with the vehicle. 9. Not compatible with all devices. 10. Full functionality requires compatible Bluetooth and smartphone. 11. Map coverage available in the United States, U.S. Virgin Islands, Puerto Rico, and Canada. 12. Visit onstar.com for details and system limitations.

• - STANDARD ○ - AVAILABLE

CADILLAC XTS



ABOUT THIS CATALOG

We have tried to make this catalog comprehensive and factual. We reserve the right, however, to make changes at any time, without notice, in prices, colors, materials, equipment, specifications, models and availability. Specifications, dimensions, measurements, ratings and other numbers in this catalog and other printed materials provided at the dealership or affixed to vehicles are approximates based upon design and engineering drawings and prototypes and laboratory tests. Your vehicle may differ due to variations in manufacture and equipment. Since some information may have been updated since the time of printing (04/13), please check with your Cadillac dealer for complete details. Any variations in colors shown are due to reproduction variation in the printing process. Cadillac reserves the right to lengthen or shorten the model year for any product for any reason, or to start and end model years at different times. Note: Some photographs in this catalog show vehicles with optional equipment.

ONSTAR OnStar services require vehicle electrical system (including battery), wireless service and GPS satellite signals to be available and operating for features to function properly. OnStar acts as a link to existing emergency service providers. Subscription Service Agreement required. Call 1-888-4ONSTAR (466-7827) or visit onstar.com for OnStar's Terms and Conditions, Privacy Policy and details and system limitations.

ENGINES Cadillac products are equipped with engines produced by GM Powertrain or suppliers to GM worldwide. The engines in Cadillac products may also be used in other GM makes or models.

TIRE SEALANT AND COMPRESSOR KIT Unless you option into a spare tire, there is no jack or spare tire in this vehicle. If you do not option into the spare tire, your vehicle has a tire sealant and compressor kit that uses a liquid tire sealant to temporarily seal up to a 1/4-inch puncture in the tread area of the tire. After using the inflator kit, it is recommended to take the tire to an authorized dealer for inspection and repair as soon as possible but at least within 100 miles of driving. The tire sealant cannot seal and inflate sidewall damage, punctures larger than 1/4 inch, or a tire that has unseated from the wheel. The sealant can only be used on one tire one time before its expiration date.

ASSEMBLY Cadillac vehicles and their components are assembled or produced by different operating units of General Motors, its subsidiaries or suppliers to GM worldwide. We sometimes find it necessary to produce Cadillac vehicles with different or differently sourced components than originally scheduled. Since some options may be unavailable when your vehicle is assembled, we suggest that you verify that your vehicle includes the equipment you ordered or, if there are changes, that they are acceptable to you.

UPDATED SERVICE INFORMATION Cadillac dealers receive useful service bulletins about Cadillac products. You may purchase them from Helm Incorporated by calling 1-800-551-4123 or by visiting www.helminc.com.

NEW-VEHICLE LIMITED WARRANTY World-class coverage comes standard on every 2013 Cadillac. This warranty is for Cadillac vehicles registered in the U.S.A. See your Cadillac dealer for terms and conditions.

COVERED FOR 6 YEARS/70,000 MILES (WHICHEVER COMES FIRST) Powertrain Limited Warranty with no deductible, Roadside Assistance Program; Courtesy Transportation Program¹

COVERED FOR 4 YEARS/50,000 MILES (WHICHEVER COMES FIRST) Bumper-to-Bumper coverage; Tires – Defects in material and workmanship; Repairs made to correct any vehicle defect; Corrosion on body sheet metal panels.

RUST THROUGH PROTECTION Cadillac vehicles are designed and built to resist corrosion and rust-through corrosion. Any body sheet metal that rusts through (in the form of an actual hole in the sheet metal) is covered for six years unlimited mileage. Cosmetic or surface corrosion, resulting from stone chips or scratches in the paint, for example, is not included in the Rust Through coverage. Application of additional rust-inhibiting materials is not required under the Rust Through coverage and none is recommended. See your Cadillac dealer for terms of this limited warranty.

FLEET ORDERS Some standard content may be deleted with fleet orders. See dealer for details.

¹ Roadside Assistance Program and Courtesy Transportation Program are not a part of the New Vehicle Limited Warranty. A separate booklet entitled "Warranty and Owner Assistance Information" furnished with each new vehicle provides detailed warranty coverage information.

GM, the GM emblem, Cadillac, the Cadillac badge, OnStar, the OnStar emblem and the slogans, emblems, vehicle model names, vehicle body designs and other marks appearing in this catalog are the trademarks and/or service marks of General Motors, its subsidiaries, affiliates or licensors. iPod is a registered trademark of Apple, Inc. ©2013 General Motors. All rights reserved.

SCAN TO LEARN MORE
ABOUT THE 2014 XTS



cadillac.com/xts

XTS

