

2005 SUBARU IMPREZA



A BLEND OF PERFORMANCE, AGILITY AND INNOVATION.

Beware the beaten path. It is the path of followers, not leaders. Of tourists, not explorers. It is the road traveled by those more trusting of convention than invention. And it is not the path of Subaru. Because for over three decades we have blazed our own trail, building the kind of cars people depend on every day. Capable cars. Rational cars. Intelligent cars. We introduced America to the beauty of All-Wheel Drive. We proved ourselves on rally courses around the world, but our journey never truly ends, it merely evolves. As do we, with cars that offer more than mere capability. Much more. They are stylish. Powerful. Exhilarating. They ignite passion. In this way, we constantly push the boundaries. Continually redefining what a Subaru can be.

At first glance, you feel the adrenaline

surge begin. Presenting the 2005 Subaru

Impreza Sedans and Wagons. Here once

again to invigorate the senses with

incomparable All-Wheel Drive agility,

performance and capability. Aggressively

styled, thoughtfully refined, and offering

a remarkable value by any measure,

there's an Impreza for every driving

EXHILARATION.

personality. Consider the versatile

Impreza 2.5 RS. The adventurous Impreza

Outback Sport. The award-winning

227-hp turbocharged Impreza WRX.

And of course, the rally-inspired,

300-hp turbocharged Impreza WRX STi.

Each uncompromisingly engineered

to ignite the emotions with a rush of

pure, unadulterated driving exhilaration.

THE 2005 IMPREZA



IMPREZA WRX. NOW APPEARING IN A PASSING LANE NEAR YOU, THE
AWARD-WINNING IMPREZA WRX SEDAN AND SPORT WAGON. RALLY-BRED AND



PASSIONATELY PERFORMANCE-MINDED, THEY
RULE THE HIGHWAY WITH ROAD-HUGGING
SYMMETRICAL ALL-WHEEL DRIVE AND AN
AGGRESSIVE, FULLY INDEPENDENT SPORT-TUNED
SUSPENSION. WHILE UNDERNEATH THE HOOD

LURKS A 227-HP INTERCOOLED AND TURBOCHARGED SUBARU BOXER ENGINE
CAPABLE OF TAKING YOU FROM 0 TO 60 IN A HEART-THUMPING 5.4 SECONDS.!



Impreza WRX Sport Wagon shown with Black Woven cloth

16" alloy wheels

SUBARU, 2003

For two years in a row, the WRX was picked as one of *Car and Driver* magazine's *10Best Cars* (model years 2002-2003).

Sport-tuned exhaust

Projector beam fog lights

Rear spoiler^{1,2}

Moonroof¹

DECADES OF RALLY EXPERIENCE have led to much more than superlative performance and technological innovation. The benefits of this invaluable experience can also be felt in our vehicles' interiors, which are designed to be stylish and comfortable, yet uncompromisingly driver-focused. For example, within the WRX you'll find aggressively bolstered,



1 The WRX Sport Wagon offers a generous 61.6 cubic feet of cargo space with the rear seat folded down, and includes a standard cargo cover to keep precious goods under wraps and away from prying eyes.

2 Sport-design instrumentation with a centered tachometer is complemented by new, smartly designed audio and climate controls, located within arm's reach.



performance-design front seats. A sporty new three-spoke, leather-wrapped MOMO brand steering wheel. A racing-inspired instrument cluster featuring a centered tachometer. Plus a list of amenities that includes a 6-speaker premium stereo with a 6-disc in-dash CD player, all of which help to make every aspect of the driving experience as pleasurable as possible.

Heated side mirrors¹

Leather-wrapped shifter

Heated front seats¹

Automatic climate control system

In-dash CD player

¹WRX Sedan with Premium Package only. ²Standard on WRX Sport Wagon.

IMPREZA WRX STi. IT'S BEEN CALLED UNCOMPROMISING, UNRELENTING AND DEFIANTLY UNAPOLOGETIC. BUT IN TRUTH, THERE ARE NO WORDS TO DESCRIBE THE AWESOME POWER



OF THE ULTRA HIGH-PERFORMANCE, ALL-WHEEL DRIVE, 300-HP IMPREZA WRX STi. RALLY-BRED AND TECHNOLOGICALLY ADVANCED, IT MUST BE EXPERIENCED TO BE UNDERSTOOD.



PURE IN ITS INTENTIONS, the interior of the Impreza WRX STi was designed for one purpose: To provide drivers with the most performance-focused environment possible. So Subaru engineers gave it a short-throw, six-speed manual shifter for quick, responsive shifts. Body-hugging STi-design front seats with grippy, perforated Blue Ecsaine upholstery that helps



1 The metallic-trimmed cockpit of the WRX STi features a thick new three-spoke, leather-wrapped, STi-design steering wheel, and a new standard premium audio system with a 6-disc in-dash CD player.

2 Unique to the WRX STi, a Driver Controlled Center Differential (DCCD) allows the driver to manually control the front/rear torque split and adjust according to specific performance requirements and driving conditions.

keep both driver and front passenger firmly planted. An ergonomic and well-organized instrument panel featuring large, competition-inspired analog gauges. And as a nod to the occasional need for life's little luxuries, a new automatic climate control system that allows you to set a temperature and then get back to more important matters—like the business of driving.

17" BBS alloy wheels

STi-design body work

HID headlights

Brembo brakes

STi exhaust system



Impreza WRX STi shown with Blue Perforated Ecaine

Short-throw
6-speed manual

STi-design front seats

Automatic climate
control system

Center differential
controls

Intercooler water-
spray control



IMPREZA 2.5 RS. SHARING THE SAME RALLY-BRED DNA AS THE REST OF THE IMPREZA FAMILY, THE MUSCULAR 2.5 RS SEDAN AND NEW 2.5 RS SPORT WAGON SHATTER THE ANONYMITY OF THE HIGHWAY WITH A SLEEK, SMART STYLE ALL THEIR OWN.



1 Taking the natural sportiness of the 2.5 RS up a notch, the new 2.5 RS Sedan Sport Package offers aerodynamic body work for a far more aggressive exterior. Plus the kind of interior amenities that put the grand in grand touring.

2 Available as an accessory are stylish fog lights that give the 2.5 RS Sedan and 2.5 RS Sport Wagon a sleek, sporty look, while improving nighttime visibility.

ENGINEERED LIKE NO OTHER VEHICLE in its class, the 2.5 RS Sedan happily defies expectations with an aggressive shape, nimble handling and stirring power, thanks to a 165-hp 2.5-liter Subaru Boxer engine with Symmetrical AWD. Moreover, the new 2.5 RS Sport Wagon shares its sibling's convention-busting ways, offering rousing performance with remarkable utility.

16" alloy wheels

Sport-tuned suspension

Body-color mirrors¹

Rear window wiper de-icer²

Sport-design front seats

ENTER THE STYLISH INTERIOR of the Impreza 2.5 RS, and you'll discover an oasis of comfort, refinement and driver-oriented functionality. From the convenient remote keyless entry system, to the 60/40-split fold-down rear seatback of the 2.5 RS Sport Wagon,



1 A leather-wrapped three-spoke MOMO brand steering wheel highlights the distinctly driver-focused interior of the Impreza 2.5 RS Sport Package.

2 The large rear cargo area of the 2.5 RS Sport Wagon offers up to 61.6 cubic feet of available cargo space. And to help make the most of it, an accessory cargo bin keeps items from rolling around while in motion.

every feature has been designed for unparalleled driving pleasure. Or for an even more dynamic environment, consider the new 2.5 RS Sport Package. It offers performance-design front seats, a 6-speaker premium stereo with a 6-disc in-dash CD player, and more.



In-dash CD player

Leather-wrapped shifter handle

Power windows and mirrors

Under-floor storage compartment²

Dark gray metallic trim

¹2.5 RS Sedan Sport Package only. ²Sport Wagon only.



16" alloy wheels

SUBARU, 1996 | Subaru introduces the Outback Sport.

Raised suspension

Fog lights

Rear spoiler²

Roof rails with
cross bars

OUTBACK SPORT WAGON. CONSIDER IT THE OFFICIAL VEHICLE OF THE GREAT OUTDOORS. BECAUSE THE RUGGEDLY BUILT OUTBACK SPORT DELIVERS AN ENGAGING BLEND OF PERFORMANCE AND CAPABILITY THAT'S AT HOME JUST ABOUT ANYWHERE YOU ARE.



1 For an even more luxurious experience, the Outback Sport Special Edition¹ offers amenities like a leather-wrapped steering wheel, a 6-disc in-dash CD player and an auto-dimming mirror with a built-in compass.

2 A spacious rear cargo area provides up to 61.6 cu. ft. of maximum cargo space with the rear seats folded down. Room enough for a whole garden of gardenias.

ENGINEERED TO GO WHEREVER the spirit of adventure takes you, the durable All-Wheel Drive Outback Sport offers a fully independent heavy-duty raised suspension for confident handling over varied road conditions. A spacious, amenity-rich interior.

A rear cargo area that includes a convenient under-floor storage compartment and a 12-volt power outlet. Plus much more.

60/40-split folding
rear seats

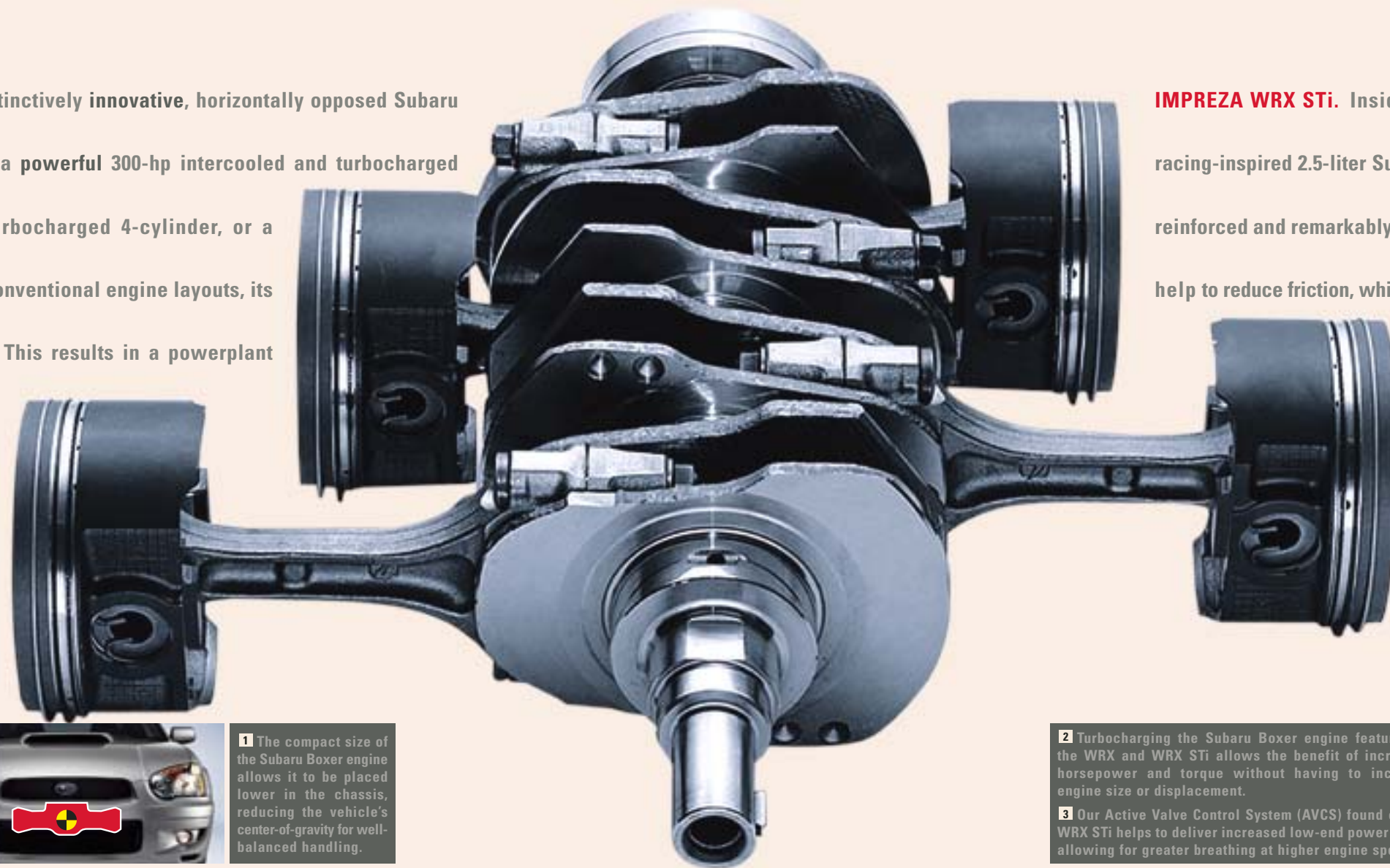
Auto-dimming rearview
mirror with compass²

6-disc CD player²

Under-floor storage
compartment

12-volt power outlet

UNDER THE HOOD, what sets Subaru apart is the distinctively innovative, horizontally opposed Subaru Boxer engine. It is available in Impreza models as a powerful 300-hp intercooled and turbocharged 4-cylinder, a rally-bred 227-hp intercooled and turbocharged 4-cylinder, or a robust 165-hp naturally aspirated 4-cylinder. Unlike conventional engine layouts, its cylinders are aligned on a single, horizontal plane. This results in a powerplant that is compact, lightweight and well balanced. Now equipped with Electronic Throttle-Control (ETC) drive-by-wire technology for more accurate and precise response, the Subaru Boxer engine delivers outstanding power and performance.



IMPREZA WRX STi. Inside the ferocious Impreza WRX STi roars a sophisticated, racing-inspired 2.5-liter Subaru Boxer engine. Its advanced block is cast of a specially reinforced and remarkably lightweight aluminum alloy. Its molybdenum-coated pistons help to reduce friction, while Dual Overhead Camshaft cylinder heads (DOHC) with hollow camshafts further reduce mass for quicker engine response. All of which is enhanced by a high-boost turbocharger producing 14.5 psi of maximum boost, and a large intercooler with manual driver-controlled water-spray to help keep the compressed intake air cool and dense, resulting in increased horsepower.

Impreza Engines
 2.5 RS and Outback Sport: 2.5-liter 4-cylinder; 165 hp, 166 lb.-ft. of torque
 WRX: 2.0-liter Turbocharged 4-cylinder; 227 hp, 217 lb.-ft. of torque
 WRX STi: 2.5-liter Turbocharged 4-cylinder; 300 hp, 300 lb.-ft. of torque



1 The compact size of the Subaru Boxer engine allows it to be placed lower in the chassis, reducing the vehicle's center-of-gravity for well-balanced handling.

2 Turbocharging the Subaru Boxer engine featured in the WRX and WRX STi allows the benefit of increased horsepower and torque without having to increase engine size or displacement.

3 Our Active Valve Control System (AVCS) found on the WRX STi helps to deliver increased low-end power while allowing for greater breathing at higher engine speeds.



FOR OVER 30 YEARS, the Subaru name has been synonymous with All-Wheel Drive (AWD). It is an essential part of the Subaru experience. So it should come as no surprise that every vehicle we build comes equipped with our advanced Symmetrical All-Wheel Drive system. Uniquely innovative, it features drivetrain components positioned along a longitudinal axis and between the vehicle axles for optimum balance and control. In turn, power is delivered to all four wheels, and distributed wherever traction is required most. Every vehicle has its own specific All-Wheel Drive requirements, however.



1 Optional on most models is a smooth-shifting 4-speed automatic transmission.
2 A 5-speed manual transmission is standard on most Impreza models.

Impreza Models	AWD System	How It Works
2.5 RS, Outback Sport and WRX with 5-speed manual	Continuous	Utilizing a viscous-center locking differential, normally, power is split 50/50 between the front and rear wheels. If wheel slippage occurs, the center differential helps transfer power to the wheels with the best traction.
2.5 RS and Outback Sport with 4-speed automatic	Active	Featuring an electronically managed continuously variable multi-plate transfer clutch, this AWD system can anticipate slippage and transfer power to the front or rear wheels with the best traction.
WRX with 4-speed automatic	VTD	Variable Torque Distribution (VTD) uses an electronically controlled hydraulic transfer clutch in conjunction with a planetary gear-type center differential to control power distribution between the front and rear wheels. Normally, the VTD system splits power 45% front and 55% rear, for more of a performance-driving feel.
WRX STi with 6-speed manual	DCCD	Featuring both manual and automatic modes, Driver Controlled Center Differential (DCCD) All-Wheel Drive uses an electronically managed multi-plate transfer clutch in conjunction with a planetary gear-type center differential to control power distribution between the front and rear wheels. Normally, DCCD splits power 35% front and 65% rear for an even greater performance-driving feel.

So Subaru engineers have thoughtfully developed multiple systems, each with its own distinct advantages. When integrated with our Subaru Boxer engine and our 4-wheel fully independent suspension, these advanced All-Wheel Drive systems deliver a level of performance, agility and handling that could only come from Subaru.

IMPREZA WRX STi. In keeping with its dedication to uncompromising performance, the WRX STi utilizes an advanced Driver Controlled Center Differential (DCCD) All-Wheel Drive system. In automatic mode, its planetary center differential splits the engine torque, sending 65% to the rear wheels and 35% to the front. In turn, an electronically controlled multi-plate transfer clutch continually adjusts the torque split for superb handling in virtually all driving conditions.

AT SUBARU, WE RACE not for the thrill of victory or the accolades of fans. We race because it is only in the heat of world rally competition that our vehicles are put to the ultimate test. It is here that the envelope is pushed, new technologies are developed, and engineering and innovation become one. The Subaru Boxer engine and the advanced Symmetrical All-Wheel Drive systems found within all Impreza models are two of the many dividends this racing experience has contributed to the real-world, on-road performance of our vehicles. Others include engine-speed-sensing rack-and-pinion steering. An incredibly rigid yet lightweight body structure, which helps to eliminate body flex for superior handling characteristics. Not to mention an advanced 4-wheel independent suspension, which works to ensure that all four wheels are firmly planted at all times. Integrated with our sophisticated drivetrain, these components work in unison to provide a rally-bred driving experience that is second to none.

IMPREZA WRX STi. Uncompromising performance demands best-of-breed engineering. So the WRX STi features a wide range of race-proven technologies, including a reinforced inverted-strut suspension for increased lateral rigidity during hard cornering. A helical limited-slip front differential that senses a left-to-right torque difference and then works quickly to help correct inside wheel spin without impeding steering response. A Brembo performance brake system featuring huge ventilated discs at all four wheels. Super Sport ABS that utilizes a lateral g-sensor to control braking pressure at each rear wheel independently for maximum braking performance.

Plus aggressive 17-inch BBS lightweight

aluminum-alloy wheels with ultra high-performance tires¹ for a powerful grip.



The rally-inspired inverted struts of the WRX STi increase lateral rigidity, improving performance under hard cornering.

¹Ultra high-performance summer-rated tires are best suited for driving under dry conditions and not recommended for driving on slippery, snow-covered or icy roads.



Symmetrical AWD

SUBARU, 2002

Since tested, the Impreza maintains the highest rating in frontal offset crash test results from the Insurance Institute for Highway Safety (IIHS)!¹

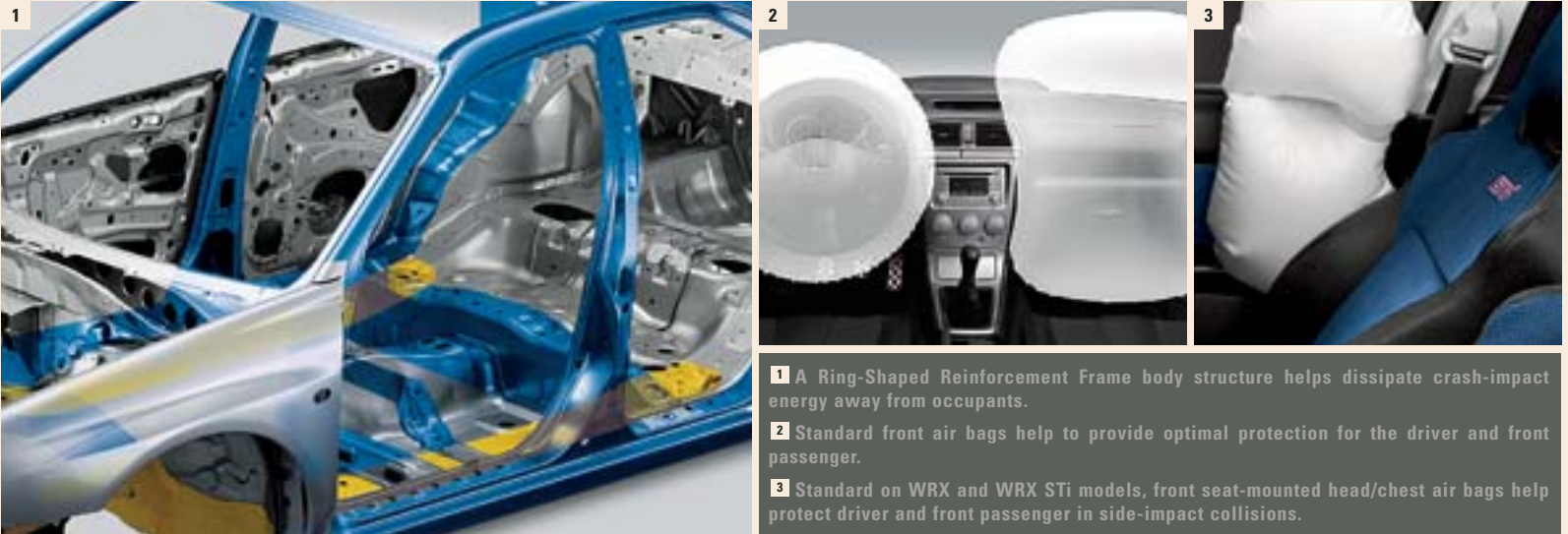
Dual front air bags (SRS)³

Side-impact front head/chest air bags (SRS)^{2,3}

Seatbelt pre-tensioners

Seatbelt force limiters

THE SUBARU DRIVING EXPERIENCE evokes many emotions. Confidence should always be one of them. So every Subaru is engineered according to the principles of “Active Driving/Active Safety.” Proactive safety components such as full-time Symmetrical AWD and 4-wheel anti-lock disc brakes (ABS) with Electronic Brake-force Distribution (EBD) help provide the



1 A Ring-Shaped Reinforcement Frame body structure helps dissipate crash-impact energy away from occupants.
2 Standard front air bags help to provide optimal protection for the driver and front passenger.
3 Standard on WRX and WRX STi models, front seat-mounted head/chest air bags help protect driver and front passenger in side-impact collisions.

driver with outstanding vehicle control during evasive maneuvering. And when the unexpected becomes the unavoidable, a cocoon of passive safety features, including a Ring-Shaped Reinforcement Frame body structure for enhanced protection, front and rear crumple zones, side-impact air bags,² and more, work in unison to help keep all occupants safe and sound.

Collapsible steering column

Safety brake pedal

Side-impact door beams

Daytime Running Lights (DRL)

LATCH system⁴

¹ For more information, contact the Insurance Institute for Highway Safety or visit their Web site at www.iihs.org. ² WRX and WRX STi only.
³ Always wear seatbelts. Children should be properly restrained in the rear seat. ⁴ LATCH system: Lower Anchors and Tethers for CHildren.

BECAUSE EVERYONE'S IDEA of a perfect driving experience is unique, a wide variety of Genuine Subaru Accessories is available to make your Impreza as distinctive as you are. Crafted with the same quality, durability, fit and finish as the vehicle itself, these specially designed accessories offer a means to accentuate every aspect of your Impreza with



1 Cross Bar Set: May be used in conjunction with all genuine Subaru roof attachments and carriers.

2 Round Cross Bar Set: May be used in conjunction with all genuine Subaru roof attachments and carriers. Stabilizing brackets sold separately.

3 Roof-mounted Bicycle Attachment: Securely transports one bicycle with a 1" to 3" downtube.

4 Heavy-duty Roof Cargo Basket with Fork-mounted Bicycle Carrier and Front-wheel Holder: Carries up to 100 lbs. of cargo, and includes mounting hardware, black cargo net with hooks and custom fairing. Shown with accessory Fork-mounted Bicycle Carrier and Front-wheel Holder (sold separately).

5 Roof Cargo Basket: Vinyl-coated steel carrier for added cargo-carrying capability. Comes with nylon stretch net (30 x 42 x 2 in.).

6 Rear Spoiler (Wagon): Color-matched rear spoiler adds a sporty touch. Part number varies by color.

7 Rear Spoiler (Sedan): Color-matched rear deck spoiler with integrated brake light.

Roof cargo carrier

Ski/snowboard attachment

Cargo tray

Car cover (sedan and wagon)

Front-end cover (full and hood)

personalized style, functionality and luxury. Moreover, all Genuine Subaru Accessories are backed by your basic vehicle 3-year/36,000-mile warranty when installed at the time of vehicle purchase. For complete warranty details, or to learn more about the full range of available Impreza accessories, see your Subaru dealer or visit www.subaru.com.

1 Hood Protector: Acrylic plastic and wrap-around design help protect the hood from stone chips.

2 Hitch-mounted Bicycle Attachment: Slides into trailer hitch to carry up to 2 bikes. Designed for easy dismantling of bikes without lifting.¹

3 Fog Lamp Kit: Helps enhance vision at night or in inclement weather.

4 Splash Guards: Durable vinyl helps protect paint finish. Set of four (painted for Outback Sport).

5 17" 5-spoke Pressure-cast Aluminum Wheel (WRX models).

6 17" BBS Multi-spoke Forged Aluminum Wheel: Helps give the WRX a racier look, improved handling and performance.

7 Turbo-boost Gauge: Illuminated turbo-boost gauge mounts conveniently to side of steering column.

8 Titanium Shift Knob: Matched titanium 5-speed shift knob with STI logo.

9 Carbon-fiber Shift Knob and Parking-brake Handle (shift knob for 5-speed only).



Engine-block heater

Battery warmer

Rear differential protector

Performance muffler

Wheel locks

¹To avoid blocking rear taillights, use only roof-mounted bicycle attachment to transport solid wheel bicycles.

1 Performance Gauge Pack: Displays turbo-boost pressure, voltage and oil temperature. Engine manifold vacuum gauge replaces turbo-boost gauge on 2.5 RS and Outback Sport. Replaces standard clock.

2 Cargo Net (Wagon): For 2.5 RS, Outback Sport and WRX Sport Wagons' cargo area.

3 Cargo Bin: Cargo bin and matching cargo tray provide for convenient transportation of various articles. When not in use, bin and net dividers fold down to a nearly flat surface. Pattern design of bin and tray coordinates with All-weather Mats.

4 Auto-dimming Rearview Mirror with Compass: Includes electronic compass. Mirror darkens when headlights are detected from the rear of vehicle.

5 Center Armrest Extension: Out-of-sight storage for your phone plus added comfort on long trips.

6 All-weather Mats: Heavy-gauge protective mats patterned to match cargo bin and tray.

7 Security System Upgrade Kit: Upgrade the remote keyless entry with the addition of a security system.

8 Subwoofer/Amplifier: Mounted under passenger's seat. Adds 120 watts of power, and delivers deep, rich bass sound you not only hear but feel.

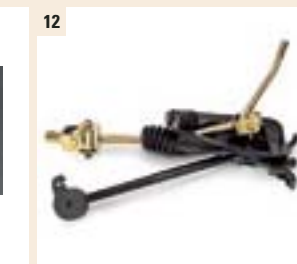
9 Upgraded Speakers: Speaker kit includes four upgraded speakers for crisper sound with minimal distortion.

10 Tweeter Kit: Special speakers enhance high-frequency audio.

11 6-Disc In-dash CD Changer: Allows selection and play for up to 6 CDs.

12 Short-throw Shifter: Significantly reduces shift-throw lengths for crisper shifts and sportier driving.

13 Trailer Hitch: Heavy-duty rated at 200 lbs. tongue weight, 2,000 lbs. towing capacity¹ (2.5 RS, Outback Sport and WRX Sport Wagons).



2005 SUBARU WARRANTIES, CUSTOMER SERVICE AND SUPPORT

Basic Warranty: 3 years or 36,000 miles, whichever comes first.

Powertrain Warranty: 5 years or 60,000 miles, whichever comes first.

Rust Perforation Warranty: 5 years, unlimited mileage.


Subaru Added Security[®] could be the most important option you choose. Protect your investment with a Subaru Added Security extended service contract—the only one backed by Subaru of America, Inc. Ask your salesperson for coverage details and assistance in selecting the plan that's best for you, up to 7 years or 100,000 miles.

The Subaru Roadside Assistance Program covers all 2005 Subaru vehicles during the first three years or 36,000 miles, whichever comes first. By calling the toll-free number in the Owner's Information Kit, Subaru owners can take advantage of any of the following benefits:

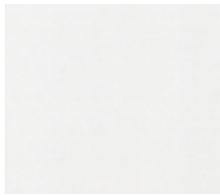
- **24-hour Roadside Assistance, seven days a week, 365 days a year, throughout the United States.**
- **Emergency Towing Service to the nearest authorized Subaru dealer.**
- **Emergency Roadside Assistance, for jump starts, gasoline (up to two gallons), flat tire change, emergency lockout service (lost key or key is locked in the vehicle) and emergency fluid replacement.**

See your Subaru dealer for details.

For complete warranty information, including coverage and exclusions, see your Subaru dealer.

SUBARU.COM YOU CAN BEGIN YOUR SUBARU EXPERIENCE RIGHT NOW, IN YOUR VERY OWN LIVING ROOM. GO TO **SUBARU.COM**, WHERE YOU'LL DISCOVER AN ONLINE ENVIRONMENT RICH WITH IN-DEPTH INFORMATION, REVIEWS, SPECIFICATIONS AND PHOTOGRAPHS ENCOMPASSING THE FULL LINE OF SUBARU VEHICLES. HERE YOU CAN TAKE A 360° TOUR OF ANY MODEL, BUILD YOUR OWN SUBARU, LOCATE VEHICLES, EVEN SCHEDULE A TEST DRIVE. AND AT **MY.SUBARU.COM**, SUBARU OWNERS CAN ACCESS THEIR VEHICLE'S SERVICE AND WARRANTY HISTORY, SCHEDULE APPOINTMENTS AND MUCH MORE. IT'S ALL QUICK, EASY AND JUST A MOUSE-CLICK AWAY. 

PAINT COLORS



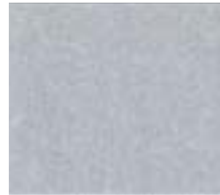
Aspen White



Crystal Gray Metallic



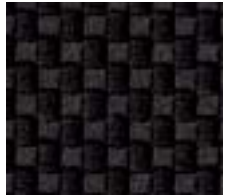
Obsidian Black Pearl



Platinum Silver Metallic



Regal Blue Pearl



Black Woven Cloth



San Remo Red



WR Blue Pearl



Obsidian Black Pearl/
Steel Gray Metallic¹



Platinum Silver Metallic/
Steel Gray Metallic



Regal Blue Pearl/
Steel Gray Metallic



Blue Perforated Ecsaine



San Remo Red/
Steel Gray Metallic



Woodland Green Pearl/
Steel Gray Metallic



Aqua Blue Metallic/
Crystal Gray Metallic²



Steel Gray Metallic/
Crystal Gray Metallic²



Gray Tricot

COLOR COMBINATIONS

Impreza Models		Aspen White	Crystal Gray Metallic	Obsidian Black Pearl	Platinum Silver Metallic	Regal Blue Pearl	San Remo Red	WR Blue Pearl	Obsidian Black Pearl/ Steel Gray Metallic ¹	Platinum Silver Metallic/ Steel Gray Metallic ¹	Regal Blue Pearl/ Steel Gray Metallic	San Remo Red/ Steel Gray Metallic	Woodland Green Pearl/ Steel Gray Metallic	Aqua Blue Metallic/ Crystal Gray Metallic ²	Steel Gray Metallic/ Crystal Gray Metallic ²
2.5 RS Sedan and Sport Wagon	Black Woven Cloth	n	n	n	n	n	n	—	—	—	—	—	—	—	—
2.5 RS Sedan with Sport Package	Black Woven Cloth	n	n	n	n	n	n	—	—	—	—	—	—	—	—
WRX Sedan and Sport Wagon	Black Woven Cloth	n	n	n	n	—	n	n	—	—	—	—	—	—	—
WRX STi Sedan	Blue Perforated Ecsaine	n	n	n	n	—	—	n	—	—	—	—	—	—	—
Outback Sport Wagon	Gray Tricot	—	—	—	—	—	—	—	n	n	n	n	n	—	—
Outback Sport Wagon Special Edition	Gray Tricot	—	—	—	—	—	—	—	n	n	n	n	n	n	n

n Standard — Not Available

¹Limited availability. See your dealer. ²Delayed availability. See your dealer.

SPECIFICATIONS

Impreza 2.5 RS Sedan
and Sport Wagon

Outback Sport
Wagons

Impreza WRX Sedan
and Sport Wagon

Impreza WRX STI
Sedan

ENGINE AND DRIVETRAIN

Engine	2.5-liter SOHC aluminum-alloy 16-valve horizontally opposed 4-cylinder Subaru Boxer engine. Platinum-tipped spark plugs.	2.0-liter DOHC intercooled, turbocharged aluminum-alloy 16-valve 4-cylinder horizontally opposed Subaru Boxer engine. Platinum-tipped spark plugs.	2.5-liter DOHC aluminum-alloy 16-valve 4-cylinder horizontally opposed Subaru Boxer engine with Active Valve Control System (AVCS). Sodium-filled exhaust valves. Iridium spark plugs.
Power	165 hp @ 5,600 rpm	227 hp @ 6,000 rpm	300 hp @ 6,000 rpm
Torque	166 lb.-ft. @ 4,000 rpm	217 lb.-ft. @ 4,000 rpm	300 lb.-ft. @ 4,000 rpm
Compression ratio	10.0:1	8.0:1	8.2:1
Bore and stroke	99.5 x 79 mm	92 x 75 mm	99.5 x 79 mm
Intake system	Aluminum-alloy intake manifold.	Aluminum-alloy intake manifold. Turbocharger with intercooler. Maximum boost pressure: 13.5 psi.	Aluminum-alloy intake manifold. High boost turbocharger with large-capacity intercooler. Driver-controlled intercooler water-spray cooler. Maximum boost pressure: 14.5 psi
Fuel and ignition system	Sequential multi-port fuel injection. Electronic Throttle Control (ETC). Engine management with integrated self-diagnostics and adaptive driving habits capability. Distributorless electronic ignition – 2.5 RS and Outback Sport models. Direct ignition – WRX and WRX STI models.		
Manual transmission	Standard fully synchronized 5-speed manual with clutch pedal-controlled starter interlock.	Standard fully synchronized 5-speed manual with clutch pedal-controlled starter interlock.	Standard fully synchronized close-ratio 6-speed manual with clutch pedal-controlled starter interlock.
Automatic transmission	Optional 4-speed electronic direct-control automatic with Economy and Power modes.	Optional 4-speed electronically controlled automatic with Economy and Power modes.	Not available.
Fuel economy (city/highway)	Manual: 23/30 mpg, Automatic: 22/28 mpg	Manual: 20/27 mpg, Automatic: 19/26 mpg	Manual: 18/24 mpg

SYMMETRICAL ALL-WHEEL DRIVE

Continuous All-Wheel Drive	Models equipped with 5-speed manual transmission utilize a viscous-type locking center differential with torque distribution configured at a 50/50-split front-to-rear. WRX models also feature a viscous-type limited-slip rear differential.		
Active All-Wheel Drive	Models equipped with 4-speed automatic transmission utilize an electronically controlled variable transfer clutch to distribute power to where traction is needed. Sensors monitor parameters such as wheel slippage, throttle position and braking to help determine torque distribution to the wheels with optimum traction.		
Variable Torque Distribution (VTD) All-Wheel Drive	WRX models equipped with 4-speed automatic transmission utilize an electronically controlled variable transfer clutch in conjunction with a planetary-type center differential. Rear wheel-biased torque distribution normally configured at 45/55-split front-to-rear. VTD also features a viscous-type limited-slip rear differential.		
Driver Controlled Center Differential (DCCD) All-Wheel Drive	Exclusive to the WRX STI, Driver Controlled Center Differential (DCCD) All-Wheel Drive, featuring both manual and automatic modes, uses an electronically managed multi-plate transfer clutch in conjunction with a planetary gear-type center differential to control power distribution between the front and rear wheels. Normally, DCCD splits power 35% front and 65% rear. DCCD also features a helical-type limited-slip front differential and mechanical limited-slip rear differential.		

CHASSIS

Steering	Engine-speed-sensing variable power-assisted rack-and-pinion. Turns lock-to-lock: 3.0 (2.5 RS Sport Wagon: 3.2). Turning circle: 35.4 ft. (2.5 RS Sport Wagon 33.5 ft.).		Engine-speed-sensing quick-ratio variable power-assisted rack-and-pinion. Power-steering oil cooler. Turns lock-to-lock: 2.6. Turning circle: 37.4 ft.
Suspension	2.5 RS and WRX: Sport-tuned 4-wheel independent suspension. Front: Strut-type with multiple-phase valve damping and lower L-arm. Rear: Strut-type with multiple-phase valve damping and parallel link. Front and rear stabilizer bars.	Outback Sport: 4-wheel independent heavy-duty raised suspension. Front: Strut-type with multiple-phase valve damping and lower L-arm. Rear: Strut-type with multiple-phase valve damping and parallel link. Front and rear stabilizer bars.	WRX STI: High-performance sport-tuned 4-wheel independent suspension. Front: Inverted strut-type with aluminum-alloy lower L-arm. Rear: Inverted strut-type with parallel link. Front and rear stabilizer bars.
Brakes	4-wheel disc, ventilated front.	4-wheel disc, ventilated front.	Brembo performance brake system. 4-wheel disc, ventilated front and rear.
	4-channel, 4-sensor ABS with Electronic Brake-force Distribution (EBD).		4-channel, 4-sensor Super Sport ABS with Electronic Brake-force Distribution (EBD).
Brake discs (in.)	10.8 front/10.3 rear	11.4 front/10.3 rear	12.7 front/12.3 rear

WHEELS AND TIRES

Wheels	16 x 6.5-inch 5-spoke aluminum-alloy. Silver finish. (7-spoke on Outback Sport)	16 x 6.5-inch 5-twin-spoke aluminum-alloy. Smoke-silver finish.	17 x 8.0-inch 10-spoke BBS lightweight aluminum-alloy. Silver or Gold finish.
Tires	205/55 R16 89V performance all-season	205/55 R16 89V performance all-season	225/45 R17 90W ultra high-performance ¹

DIMENSIONS

	Sedans			Sport Wagons			
Length	173.8 in.			173.8 in.			
Height	56.7 in. (WRX STI: 56.3 in.)			58.5 in. including roof rails (Outback Sport: 60.6 in. including roof rails and cross bars)			
Width	68.5 in.			66.7 in. (Outback Sport: 67.3 in.)			
Wheelbase	99.4 in. (WRX STI: 100.0 in.)			99.4 in.			
Track (front/rear)	58.5 in./58.3 in. (WRX STI: 58.7 in./58.9 in.)			57.7 in./57.3 in. (Outback Sport: 57.5 in./57.3 in.)			
Curb weight (manual/automatic)	2.5 RS Sedan: 2,972 lbs./3,024 lbs. ²	WRX Sedan: 3,085 lbs./3,140 lbs. ³	WRX STI Sedan: 3,298 lbs./N/A	2.5 RS Sport Wagon: 3,062 lbs./3,110 lbs.	WRX Sport Wagon: 3,165 lbs./3,220 lbs.	Outback Sport Wagon: 3,058 lbs./3,110 lbs.	Outback Sport Wagon Special Edition: 3,058 lbs./3,110 lbs.
Coefficient of drag (cd)	0.33			0.34 (WRX and Outback Sport: 0.37)			
Headroom (front/rear)	38.6 in./36.7 in. (WRX with Premium Package: 36.3 in./36.6 in.)			39.7 in./37.3 in.			
Legroom (front/rear)	42.9 in./33.0 in.			42.9 in./33.7 in.			
Shoulder room (front/rear)	52.7 in./52.9 in.			52.7 in./52.9 in.			
Cabin capacity	87.6 cu. ft.			90.4 cu. ft.			
Cargo capacity	11.0 cu. ft.			27.9 cu. ft./61.6 cu. ft. with rear seat lowered			

EQUIPMENT

EXTERIOR

	Impreza 2.5 RS Sedan	Impreza WRX Sport Wagon	Impreza WRX Sedan	Impreza WRX Sport Wagon	Outback Sport Wagon	Outback Sport Wagon ¹	Outback Sport Wagon Special Edition ²
Multi-reflector low-beam and high-beam halogen headlights	n	n	n	n	—	n	n
High Intensity Discharge (HID) low-beam and multi-reflector halogen high-beam headlights	—	—	—	—	n	—	—
Projector beam halogen fog lights	□ ⁶	□ ⁶	n	n	□ ⁶	n	n
Aluminum-alloy hood with functional hood scoop (feeds turbocharger intercooler)	—	—	n	n	n	—	—
Front bumper with lower air intake and integrated front spoiler	n	n	n	n	—	n	n
STI-design front bumper with lower air intake, integrated front and corner spoilers; STI-design rear bumper	—	—	—	—	n	—	—
Body-color aerodynamic side ground effects	□ ⁷	—	n	n	—	—	—
STI-design body-color aerodynamic side ground effects	—	—	—	—	n	—	—
Rear spoiler	□ ⁶	□ ⁶	□ ⁷	n	—	□ ⁶	n
Dual-plane rear spoiler	—	—	—	—	n	—	—
Exhaust system with single chrome outlet	n	n	—	—	—	n	n
Sport-tuned exhaust system with single chrome outlet	—	—	n	n	—	—	—
STI high-performance-tuned exhaust system with single stainless-steel outlet	—	—	—	—	n	—	—
Black side mirrors	n	n	—	—	—	n	n
Body-color side mirrors	□ ⁷	—	n	n	n	—	—
Body-color door handles	n	n	n	n	n	n	n
Heated side mirrors and windshield wipers de-icer	—	—	□ ⁸	—	—	—	—
Two-speed windshield wipers with variable intermittent mode	n	n	n	n	n	n	n
Single-speed rear window wiper with fixed intermittent mode and de-icer	—	n	—	n	—	n	n
Tailgate with rear spoiler	—	—	—	n	—	—	n
Black-finish raised roof rails	—	n	—	n	—	—	—
Black-finish raised roof rails with cross bars (100 lbs. capacity)	—	—	—	—	—	n	n
Power tilt/sliding glass moonroof	—	—	□ ⁸	—	—	—	—

SEATING AND TRIM

6-way manually adjustable driver's seat; 4-way manually adjustable front passenger seat	n	n	n	n	n	n	n
Sport-design front seats with height-adjustable active head restraints	n	n	—	—	—	n	n
Performance-design front seats with fixed integrated head restraints	□ ⁷	—	n	n	—	—	—
STI-design front seats with fixed integrated head restraints and embroidered STI logos	—	—	—	—	n	—	—
Dual-mode heated front seats	—	—	□ ⁸	—	—	—	—
Rear-center armrest with trunk pass-through	n	—	n	—	—	—	—
60/40-split flat-folding rear seatback	—	n	—	n	—	n	n
3-spoke steering wheel with manually adjustable tilt column	n	n	—	—	—	n	—
Leather-wrapped 3-spoke MOMO brand steering wheel with manually adjustable tilt column	□ ⁷	—	n	n	—	—	n
Perforated leather-wrapped 3-spoke STI-design steering wheel with contrasting red stitching	—	—	—	—	n	—	—
Leather-wrapped shifter handle	n	n	n	n	—	—	n
Leather-wrapped parking-brake handle	□ ⁷	—	n	n	—	—	—
Perforated leather-wrapped shifter and parking-brake handle with contrasting red stitching	—	—	—	—	n	—	—
Dark gray metallic trim on dash and console	n	n	n	n	n	n	n
Aluminum-alloy pedal covers (manual transmission only)	□ ⁷	—	n	n	n	—	—
Carpeted floor mats	n	n	n	n	—	n	n

CONVENIENCE FEATURES

Power front and rear windows with driver's auto-down; power mirrors	n	n	n	n	n	n	n
Electronically controlled cruise control	n	n	n	n	n	n	n
Dual cupholders in center console; dual retractable rear cupholders	n	n	n	n	n	n	n
Sun visors with concealed vanity mirrors	n	n	n	n	n	n	n
Auto-dimming rearview mirror with compass	—	—	□ ⁶	□ ⁶	□ ⁶	□ ⁶	n
In-dash storage compartment	n	n	—	—	—	n	—
Center console with armrest and enclosed storage compartment; lockable and illuminated glove box	n	n	n	n	n	n	n
Center console armrest extension	□ ⁶	□ ⁶	□ ⁶	□ ⁶	□ ⁶	□ ⁶	n
12-volt power outlet in cargo area	—	—	—	—	—	n	n
Cargo-area concealed under-floor storage compartment; grocery bag hook; 4 tie-down hooks	—	n	—	n	—	n	n
Cargo-area concealed under-floor storage tray	—	—	—	n	—	—	—
Retractable/removable cargo-area cover	—	n	—	n	—	n	n
Removable cargo-area tray	—	□ ⁶	—	□ ⁶	—	n	n

n Standard □ Optional — Not available

INSTRUMENTATION

	Impreza 2.5 RS Sedan	Impreza 2.5 RS Sport Wagon	Impreza WRX Sedan	Impreza WRX Sport Wagon	Outback Sport Wagon	Outback Sport Wagon Special Edition ⁵
Analog speedometer, tachometer, coolant temperature and fuel gauges with illuminated red needles on black faces and white indicators	■	■	■	■	■	■
Sport-design instrumentation with silver gauge trim rings	□ ⁷	—	—	—	—	■
Sport-design instrumentation with silver gauge trim rings and center-mounted tachometer	—	—	■	■	—	—
STi-design instrumentation with aluminum gauge trim rings, center-mounted tachometer, gauge needles full-sweep on start-up and adjustable tachometer red-line warning with audible indicator	—	—	—	—	■	—
Digital clock and odometer including dual-mode trip odometer	■	■	■	■	■	■
Digital ambient temperature gauge	—	—	—	—	■	■

AUDIO SYSTEMS

	Impreza 2.5 RS Sedan	Impreza 2.5 RS Sport Wagon	Impreza WRX Sedan	Impreza WRX Sport Wagon	Outback Sport Wagon	Outback Sport Wagon Special Edition ⁵
80-watt 4-speaker audio system with single-disc in-dash CD player	■	■	—	—	—	■
140-watt 6-speaker premium audio system with 6-disc in-dash CD player	□ ⁷	—	■	■	■	—
260-watt 6-speaker premium audio system with subwoofer and 6-disc in-dash CD player	—	—	—	—	—	■

CLIMATE CONTROL

	Impreza 2.5 RS Sedan	Impreza 2.5 RS Sport Wagon	Impreza WRX Sedan	Impreza WRX Sport Wagon	Outback Sport Wagon	Outback Sport Wagon Special Edition ⁵
Manually adjustable CFC-free air conditioning system with rotary controls for temperature, 4-speed fan and airflow direction	■	■	—	—	—	■
Automatic climate control system with CFC-free air conditioning, air filtration system, rotary controls for temperature, 7-speed fan and airflow direction	—	—	■	■	■	—

SECURITY

	Impreza 2.5 RS Sedan	Impreza 2.5 RS Sport Wagon	Impreza WRX Sedan	Impreza WRX Sport Wagon	Outback Sport Wagon	Outback Sport Wagon Special Edition ⁵
Keyless entry system with answer-back electronic chirp	■	■	■	■	■	■
Engine immobilizer	—	—	—	—	■	—

SAFETY

	Impreza 2.5 RS Sedan	Impreza 2.5 RS Sport Wagon	Impreza WRX Sedan	Impreza WRX Sport Wagon	Outback Sport Wagon	Outback Sport Wagon Special Edition ⁵
Dual driver and front passenger front air bags (SRS) ⁹	■	■	■	■	■	■
Front seat-mounted head/chest side-impact airbags (SRS) ⁹	—	—	■	■	■	—
Height-adjustable active front seat head restraints help reduce the potential for whiplash	■	■	—	—	—	■
Three individual rear head restraints (height-adjustable on sport wagons)	■	■	■	■	■	■
Height-adjustable 3-point front seatbelts with pre-tensioners and force limiters; 3-point rear seatbelts at all seating positions	■	■	■	■	■	■
Rear child safety door locks	■	■	■	■	■	■
Safety brake pedal system	■	■	■	■	■	■
Energy-absorbing collapsible steering column	■	■	■	■	■	■
Ring-Shaped Reinforcement Frame body structure with hydroformed front sub-frame structure	■	■	■	■	■	■
Daytime Running Lights (DRL)	■	■	■	■	■	■

OPTIONAL EQUIPMENT

	Impreza 2.5 RS Sedan	Impreza 2.5 RS Sport Wagon	Impreza WRX Sedan	Impreza WRX Sport Wagon	Outback Sport Wagon	Outback Sport Wagon Special Edition ⁵
Antitheft security system with answer-back electronic chirp	□	□	□	□	□	□
2.5 RS Sedan Sport Package: STi-design fog light insert covers, Body-color aerodynamic side ground effects, Body-color exterior mirrors, Performance-design front seats with fixed integrated head restraints, Leather-wrapped 3-spoke MOMO brand steering wheel with manually adjustable tilt column, Leather-wrapped parking-brake handle, Sport-design instrumentation, 140-watt 6-speaker premium audio system with 6-disc in-dash CD player, Aluminum-alloy pedal covers (manual transmission only)	□	—	—	—	—	—
WRX Sedan Premium Package: Power glass tilt/sliding moonroof, Rear spoiler, Windshield wipers de-icer, Heated side mirrors, Dual-mode heated front seats	—	—	□	—	—	—

■ Standard □ Optional — Not available

¹Ultra high-performance summer-rated tires are best suited for driving under dry conditions and are not recommended for driving on slippery, snow-covered or icy roads.

²2,976 lbs./3,026 lbs. with optional Sport Package.

³3,126 lbs./3,181 lbs. with optional Premium Package.

⁴Limited availability. See your dealer.

⁵Delayed availability. See your dealer.

⁶Available as an accessory. See your dealer.

⁷Included with optional Sport Package.

⁸Included with optional Premium Package.

⁹The Supplemental Restraint System (SRS) (air bags) affords the driver and front passenger additional protection in a moderate to severe frontal or (when equipped with front-seat side-impact air bags) a side-impact collision. This system provides supplemental protection only, and seatbelts must be worn in order to avoid injuries to out-of-position occupants upon bag deployment and to provide the best combined protection in a serious accident. Children should always be properly restrained in the rear seat.

Some images shown are for illustration purposes only. Specifications in this brochure are based on the latest product information available at the time of publication. Some equipment shown in photography in this brochure is optional at extra cost. Specific options may be available only in combination with other options. Specific combinations of equipment or features may vary from time to time and by geographic area. Certain accessories and equipment may not be available at the time of publication. Subaru of America, Inc., reserves the right to change or discontinue at any time, without notice, prices, colors, materials, equipment, accessories, specifications, models and packages without incurring any obligation to make the same or similar changes on vehicles previously sold. Colors shown may vary due to reproduction and printing processes. This brochure was prepared by Subaru of America, Inc. A warranty from Subaru of America, Inc., is available only on cars sold to the first retail purchaser through an authorized Subaru dealer in the continental U.S. or Alaska. Subaru, Subaru Boxer, Impreza, WRX, STi, Ecsaine, BBS, Brembo and MOMO are registered trademarks. For more information, contact your Subaru dealer or log on to www.subaru.com.



SUBARU[®]
DRIVEN BY WHAT'S INSIDE™