

CADILLAC

WITH THE  
NORTHSTAR



SYSTEM

SEVILLE STS

SEVILLE SLS

ELDORADO TOURING COUPE

ELDORADO

DEVILLE CONCOURS

DEVILLE

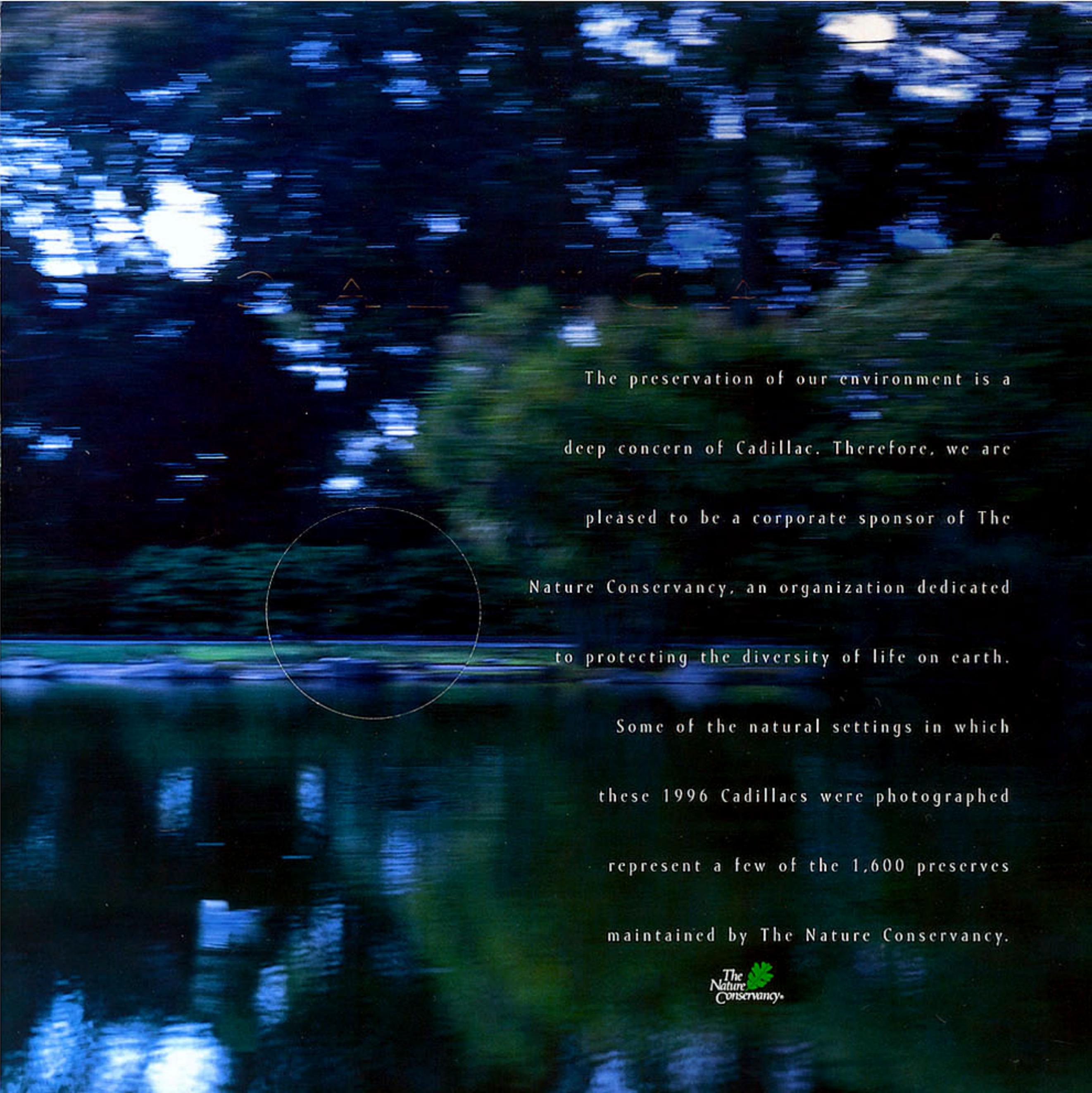
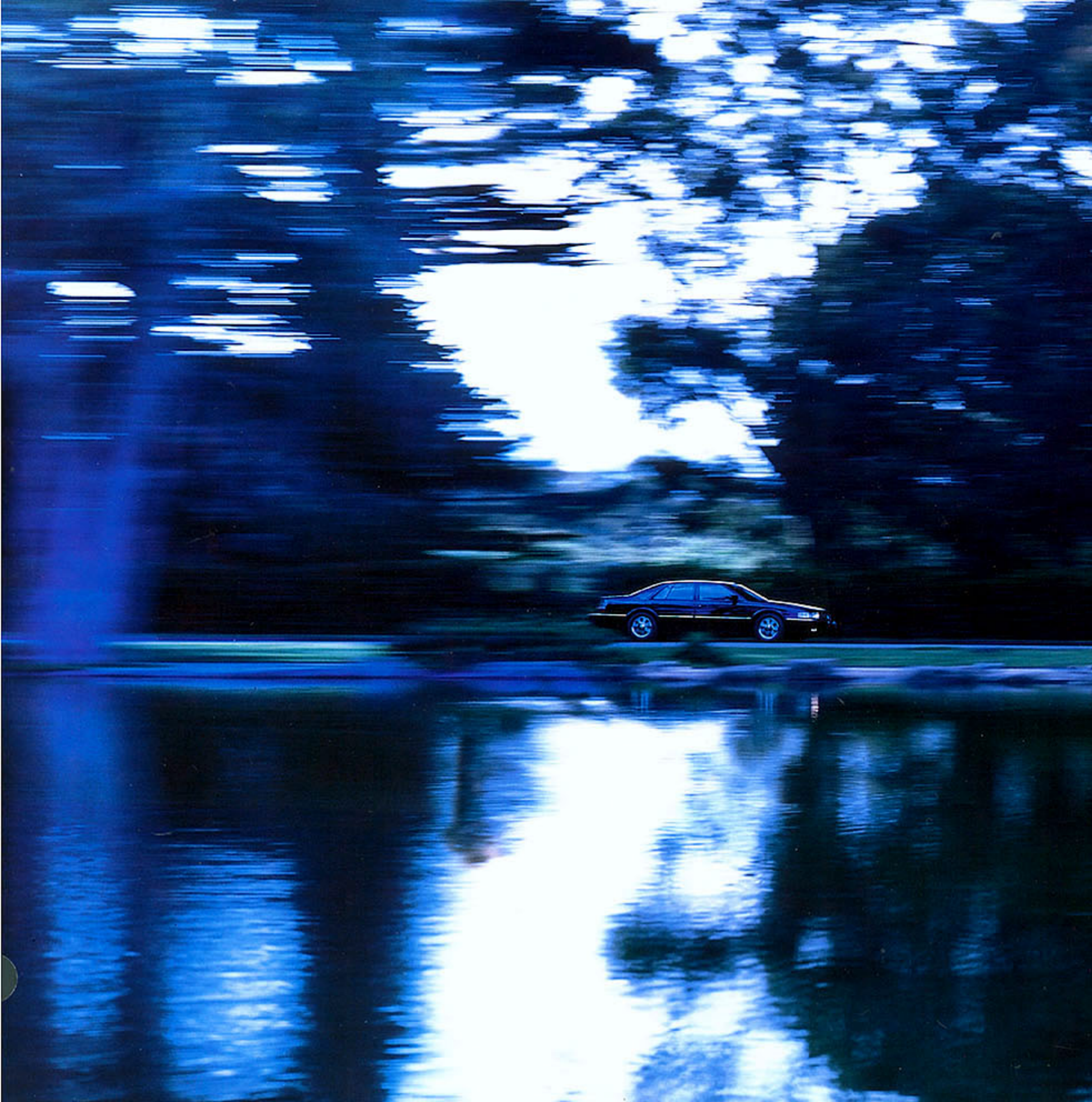


An evolving harmony exists in our world,  
the forest, and even the human creativity  
of a luxury automobile. For Cadillac,  
this means a special balance, orchestration  
and the relentless advancement of our  
unique Northstar System. In the pursuit  
of advanced driving performance, control  
and safety, Northstar has been refined  
to new levels of capability. The result  
creates an even higher standard for 1996.

We believe you'll agree.



**CADILLAC**  
CREATING A HIGHER STANDARD



# CADILLAC

The preservation of our environment is a deep concern of Cadillac. Therefore, we are pleased to be a corporate sponsor of The Nature Conservancy, an organization dedicated to protecting the diversity of life on earth.

Some of the natural settings in which these 1996 Cadillacs were photographed represent a few of the 1,600 preserves maintained by The Nature Conservancy.



INSIDE THE NORTHSTAR SYSTEM

A HIGHER STANDARD OF TECHNOLOGY



THE 1996 CADILLAC

PORTFOLIO OF AUTOMOBILES

S E V I L L E

SEVILLE STS .....

SEVILLE SLS .....

E L D O R A D O

ELDORADO TOURING COUPE .....

ELDORADO .....

D E V I L L E

DEVILLE CONCOURS .....

DEVILLE .....

# T H E . . . S Y S T E M



## P O W E R F O R M U L A

The Cadillac Northstar System is a precise orchestration of powertrain and chassis technology that delivers superior power, control, reliability, safety and efficiency. And now, the internationally renowned Northstar System is part of every Cadillac Seville, DeVille and Eldorado.



## C O M P U T E R C H O R E O G R A P H Y

Deep within every Cadillac is an ingenious computer system that choreographs the engine's raw power with the Northstar System's Integrated Chassis Control, Road-Sensing Suspensions, anti-lock brakes, Traction Control and Cadillac's advanced steering systems. The result is an incomparable sense of driver control and vehicle capability.



## P O W E R



## M U L T I - V A L V E M U S C L E

The Northstar V8 features an aluminum block and cylinder heads, with four valves for every combustion chamber: two intake and two exhaust. They are operated by dual overhead cams, which are, in turn, driven by quiet, durable chains. This valve arrangement helps optimize the engine's "respiration." Spark plugs centrally located between the valves enhance the Northstar V8's combustion efficiency...and power.



## F R E E - F L O W B R E A T H I N G

Free-flowing tubes or "runners" of the Northstar V8's intake manifold help to efficiently channel air into the combustion chambers with outstanding effectiveness. Features of this award-winning one-piece manifold design are patented. In fact, there is an impressive total of 16 United States government patents in the Cadillac Northstar engine.





## C O N T R O L



### S U P E R B R E F L E X E S

This highly advanced valve constantly fine-tunes the Northstar System's shock absorbers to a wide range of dynamic forces. The result is the new Continuously Variable Road-Sensing Suspension found in Seville STS, Eldorado Touring Coupe and DeVille Concours. It is a Cadillac world-exclusive, offering optimum chassis response under all conditions.



### S I L K E N S T E E R I N G

The Northstar System now harnesses the primal forces of magnetism to give a silken and continuously variable steering effort in Seville STS, Eldorado Touring Coupe and DeVille Concours. The new MAGNASTEER unit incorporates a doughnut-size electromagnet to allow maximum assist for parking maneuvers and low boost for taut highway response.



# A C T I V E   S A F E T Y

.....



## H A N D S - O N   M A N A G E M E N T

Your hands remain securely and conveniently on the steering wheel thanks to new, wheel-mounted controls. The right "button" controls sound volume and radio station selection; the left handles climate control and the fan, or phone functions with the optional cellular phone.



## M A I N T A I N I N G   T R A C T I O N

These toothed rings enhance safety and control by providing vital anti-lock brake and traction control information to your Cadillac's computer. They turn inside each wheel bearing, their teeth tripping small magnetic sensors as the wheel turns. Raw data is then processed by the computer which, in turn, precisely regulates ABS or traction control.



# R E L I A B I L I T Y



## M I N I M I Z E D M A I N T E N A N C E

Platinum-tipped spark plugs in Cadillac Northstar V8s contribute incredible durability to the System. Result: Scheduled tune-up intervals are extended to 100,000 miles.\* What's more, Northstar engines can safely go up to 50 miles without any coolant in case of complete loss.



## E N D U R I N G F L U I D S

Cadillac automatic transmissions are now filled with DEXRON-III fluid with no replacement scheduled for the life of the vehicle.\* In addition, DEX-COOL, a coolant with new corrosion inhibitors, is not scheduled to be changed for 5 years/100,000 miles.\*\*

\*This period varies with use and driving conditions.

\*\*This is a recommended service interval. Actual performance may vary. See Owner's Manual for limitations.





THE 1996 CADILLAC  
PORTFOLIO OF AUTOMOBILES

S E V I L L E

SEVILLE STS .....

SEVILLE SLS .....

E L D O R A D O

ELDORADO TOURING COUPE .....

ELDORADO .....

D E V I L L E

DEVILLE CONOURS .....

DEVILLE .....



THE

LOOK

S E V I L L E

THE  
PERFORMANCE

THE

Nothing else looks or performs like a Seville with the Northstar System. And for

SYSTEM

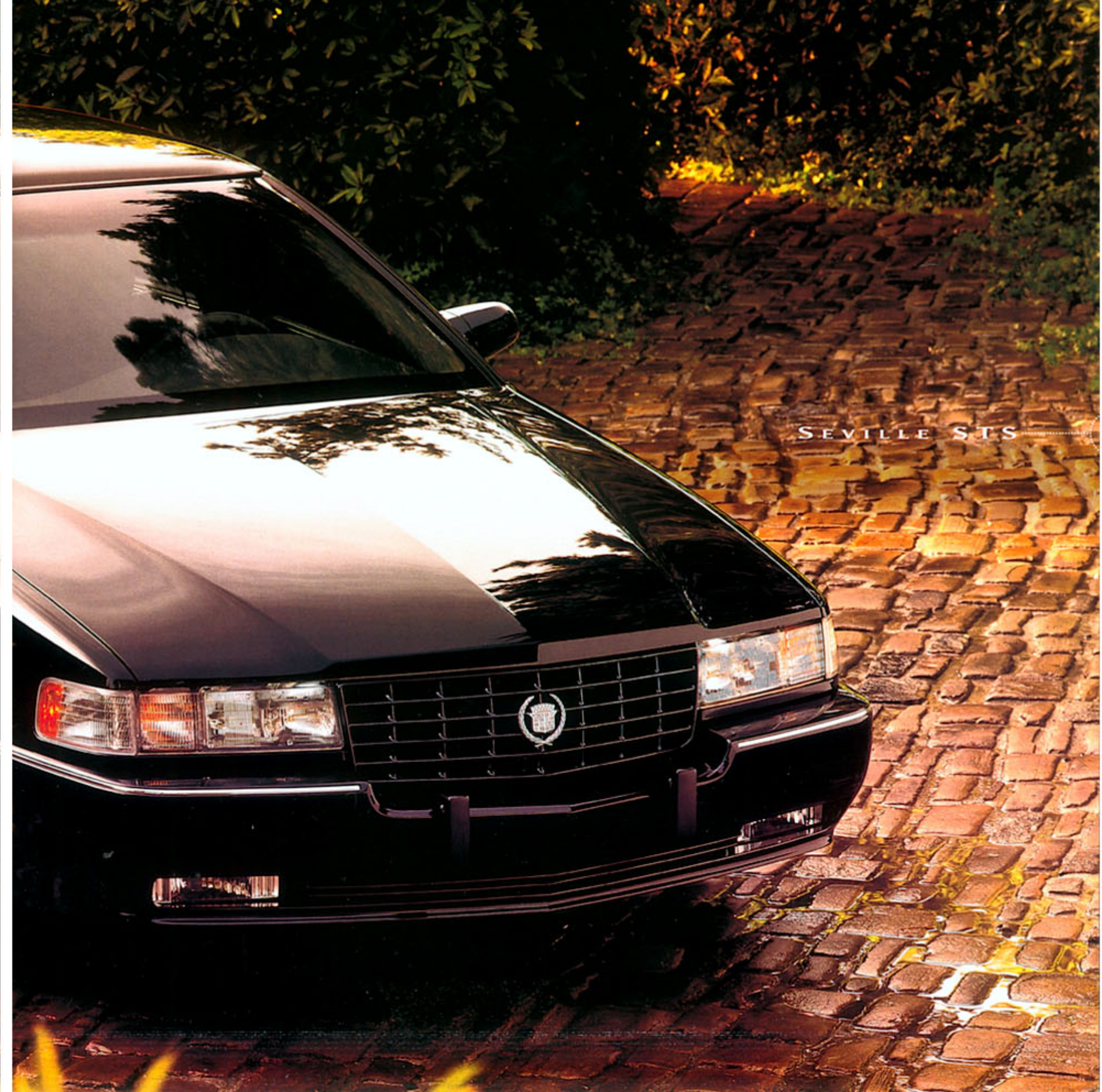
1996, Seville STS advances that performance with the new Continuously Variable

Road-Sensing Suspension system. The handling of STS is also enhanced with the new

MAGNASTEER system. Inside, radios are redesigned and electronics are simplified.



Seville STS in the Hart Prairie Preserve, Flagstaff, Arizona.







SEVILLE STS



ATTENTIVE LUXURIES

A new convenience for the 1996 STS owner is the fully integrated, hands-free, digital/analog cellular phone. These optional phones feature voice dialing, name recognition and function read-outs through the Driver Information Center. Radios are also redesigned and acoustically advanced. Some have digital sound processing that tailors audio characteristics to individual taste. Supple Nuance leather seating areas and genuine Zebrano wood trim complement STS interiors.





## SEVILLE SLS



## UNCOMMON POISE

As an undisputed statement of sophisticated styling, luxury and balanced Northstar performance, Seville SLS now features simplified electronics for enhanced reliability and daytime running lamps for added safety. In addition, steering wheel controls handle climate, radio or optional cellular phone functions. Both ignition key anti-lockout and trunk release valet lockout features underscore thoughtful technology.

# SEVILLE FEATURES & OPTIONS



## OPTIONAL SUNROOF

### STANDARD INTERIOR

Air bags, driver and front passenger  
 Air recirculation control  
 Articulating headrests  
 Auto-dimming inside rearview mirror  
 Automatic door locking  
 Battery guard  
 Column shift  
 Controlled-cycle wipers  
 Cruise control  
 Digital instrumentation/trip odometer  
 Driver Information Center  
 Electronic climate control  
 Fingertip steering wheel controls  
 Five-position front shoulder belts  
 Front visor vanity mirrors, illuminated  
 Illuminated entry  
 PASS-Key II security  
 Power door locks with anti-lockout  
 Power front seat adjusters/recliners  
 Power windows, driver express down  
 Reading lamps, front/rear  
 Rear window defogger

Rear window lockout  
 Remote keyless entry/key fob  
 Retained accessory power  
 Solar-Ray tinted glass  
 Tilt-adjusting wheel, leather-trimmed  
 Traction Control on/off switch  
 Trunk valet lockout  
 Twilight Sentinel  
 Wiper-activated headlamps  
 Zebrano wood interior trim

### STANDARD EXTERIOR

Brake/transmission interlock  
 Compact spare tire with cover  
 Daytime running lamps  
 Front/rear crush zones  
 Power antenna  
 Power, heated sideview mirrors  
 Simplified, Class 2 electronics  
 Steel safety cage  
 Trunk, power pull-down  
 Tungsten-halogen headlamps

### OPTIONAL

Analog instrumentation

Audible theft-deterrent system  
 Auto-dimming driver's side mirror  
 Dual-zone climate control  
 Electrically heated windshield  
 Electronic compass  
 Full floor console with floor shift  
 Hands-free cellular phone  
 Heated front leather seating areas  
 Nuance leather seating areas  
 Personalized memory, driver's seat  
 Power front-seat lumbar controls  
 Sunroof

Three-channel garage door opener

### STS, STANDARD

Analog instrumentation  
 Audible theft-deterrent system  
 Auto-dimming driver's side mirror  
 Dual-zone climate control  
 Full floor console with floor shift  
 Nuance leather seating areas  
 Personalized memory, driver's seat  
 Power front-seat lumbar controls  
 Rainsense wiper system



Seville Standard: AM/FM stereo with cassette, clock and six speakers



Optional: AM/FM cassette, four Bose amplified speakers



Optional: AM/FM cassette, four Bose amplified speakers, trunk-mounted CD



Optional: AM/FM cassette, four Bose speakers, digital sound processing, trunk-mounted CD



P O W E R T R A I N & P E R F O R M A N C E



SLS Std.: 16"x7" cast with Michelin XW4 P225/60R16



SLS Opt.: 16"x7" chrome with Michelin XW4 P225/60R16



STS Std.: 16"x7" cast with Goodyear Eagle RS-A P225/60R16



STS Opt.: 16"x7" chrome with Goodyear Eagle GA P225/60ZR16

SLS PERFORMANCE 0-60 mph: 7.4 seconds TOP SPEED: 112 mph RANGE\*: 520 miles EPA EST. MPG: 17 city/26 hwy.

STS PERFORMANCE 0-60 mph: 7.1 seconds TOP SPEED\*\*: 150 mph RANGE\*: 520 miles EPA EST. MPG: 17 city/26 hwy.

\* Estimated highway range: multiply EPA highway estimate by fuel tank capacity.

\*\* With optional STS tires.

ENGINE

Northstar 4.6L V8, 32-valve DOHC

STS: 300-hp, 295 lbs-ft torque

SLS: 275-hp, 300 lbs-ft torque

Aluminum block and heads

Compression ratio: 10.3:1

Tuned-port fuel injection

Crank-triggered ignition

Fuel: Premium

DRIVELINE

Front-wheel drive/transverse engine

Four-speed automatic transmission

Viscous converter clutch

Final drive ratio: 3.11:1

STS: 3.71:1

SUSPENSION

Fully independent, coil spring

Integrated Chassis Control System

Road-Sensing Suspension

STS: Continuously Variable

Steering: Power, Speed-Sensitive

STS: MAGNASTEER

Turning circle: 43.4 ft

Brakes: Power, 4-wheel disc, ABS

Traction Control: Bosch ASR5

CAPACITIES

Oil: 7 quarts

Coolant: 12.5 quarts

Fuel: 20 gallons

Trunk: 14.4 cu ft

Battery: 12-volt

Towing: 1000 lbs

Curb weight, lbs/kg:

SLS: 3832 lbs/1738 kg

STS: 3869 lbs/1755 kg

INTERIOR DIMENSIONS, in./mm

Head room ..... front 38.0"/966mm rear 38.3"/972mm

Leg room ..... front 43.0"/1092mm rear 39.1"/993mm

Hip room ..... front 55.0"/1398mm rear 57.6"/1464mm

Shoulder room ..... front 58.9"/1496mm rear 57.5"/1460mm

Seating capacity ..... 2/3



THE

FREEDOM

E L D O R A D O

THE

CHARISMA

THE

Eldorado's embodiment of personal spirit and freedom remains firmly based on the

SYSTEM

Northstar System for 1996. Its legendary 32-valve V8 performance is redefined with

enhanced fuel injectors as well as the Touring Coupe's new Continuously Variable

Road-Sensing Suspension system. A hands-free cellular phone is also available.



Eldorado Touring Coupe in the South Fork San Miguel River Preserve, Telluride, Colorado.



ELDORADO TOURING COUPE





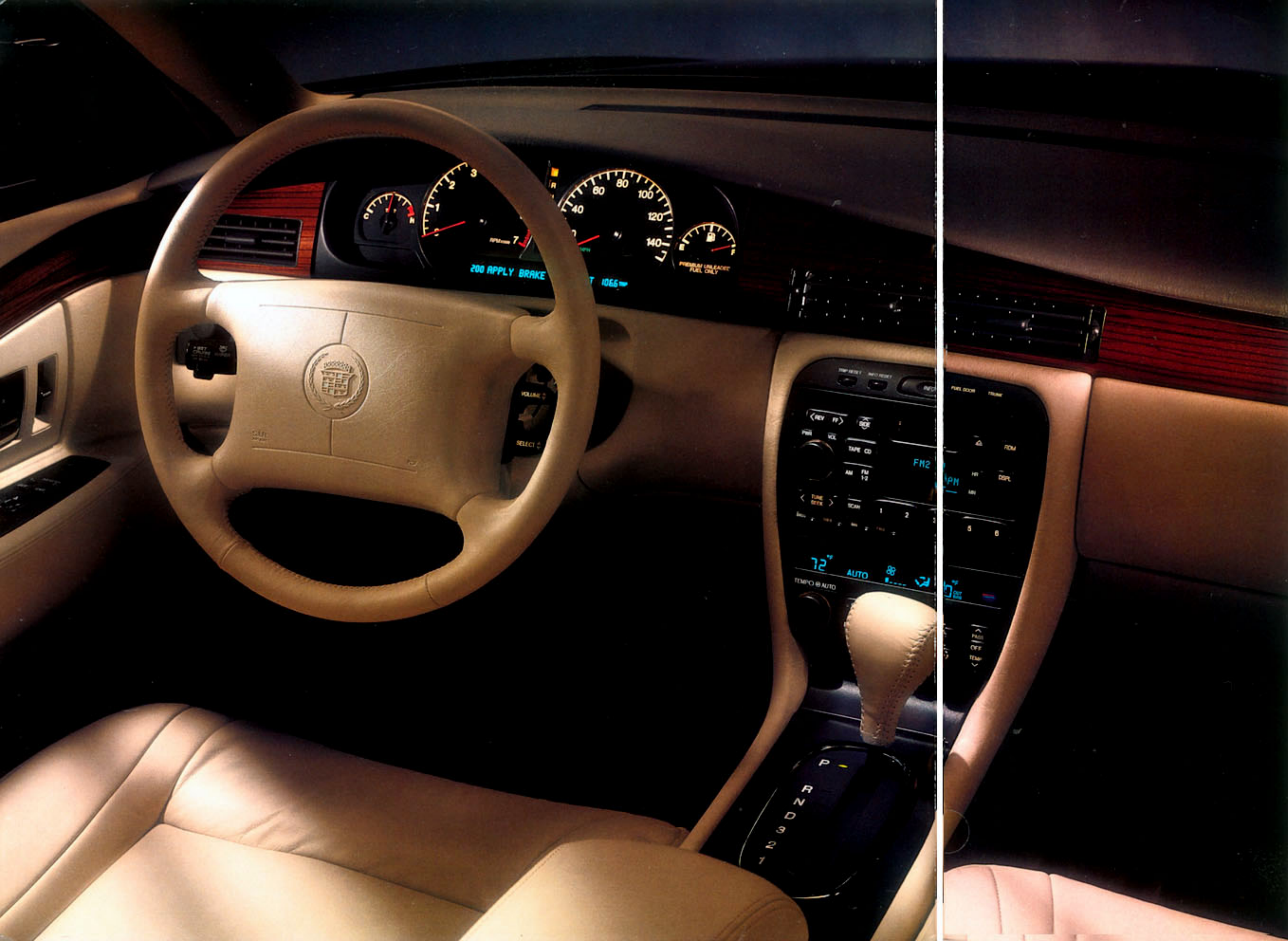
E L D O R A D O T O U R I N G C O U P E



E N H A N C E D I N S T R U M E N T A T I O N

A new family of redesigned and re-engineered radios highlights the Eldorado Touring Coupe's appeal to individual expression. An available 12-disc CD changer is complemented by digital sound processing. This feature allows for driver-focused sound, a richer tone for talk radio, plus precise sound staging and more. The instruments and Driver Information Center of the Eldorado Touring Coupe are also enhanced for '96. There's even an eight-way memory driver's seat. It uses the Remote Keyless Entry system to recall the driving positions of two individuals.





E L D O R A D O



P O W E R F U L D E L I V E R Y

Eldorado's expressive style and power are centered on its cleanly tailored cockpit as well as its Northstar System. Steering wheel controls put climate, radio or optional cellular phone functions at your fingertips. The enhanced instruments and Driver Information Center now program door locks and battery guard protection. A new console design adds a contemporary flavor, while new dual-zone air conditioning tailors Eldorado's cabin environment for the driver and front passenger.



# E L D O R A D O F E A T U R E S & O P T I O N S



## STANDARD INSTRUMENTATION

### STANDARD INTERIOR

Air bags, driver and front passenger  
 Air recirculation control  
 Articulating headrests  
 Auto-dimming inside rearview mirror  
 Automatic door locking  
 Battery guard  
 Column shift  
 Controlled-cycle wipers  
 Cruise control  
 Digital instrumentation/trip odometer  
 Driver Information Center  
 Electronic climate control  
 Fingertip steering wheel controls  
 Front visor vanity mirrors, illuminated  
 Illuminated entry  
 PASS-Key II security  
 Power door locks with anti-lockout  
 Power front seat adjusters/recliners  
 Power windows, driver express down  
 Reading lamps, front/rear  
 Rear window defogger  
 Remote keyless entry/key fob

Retained accessory power  
 Solar-Ray tinted glass  
 Tilt-adjusting wheel, leather-trimmed  
 Traction Control on/off switch  
 Trunk valet lockout  
 Twilight Sentinel  
 Wiper-activated headlamps  
 Zebrano wood interior trim

### STANDARD EXTERIOR

Brake/transmission interlock  
 Compact spare tire with cover  
 Daytime running lamps  
 Electronic Level Control  
 Front/rear crush zones  
 Power antenna  
 Power, heated sideview mirrors  
 Simplified, Class 2 electronics  
 Steel safety cage  
 Trunk, power pull-down  
 Tungsten-halogen headlamps

### OPTIONAL

Analog instrumentation  
 Audible theft-deterrent system

Auto-dimming driver's side mirror  
 Dual-zone climate control  
 Electronic compass  
 Full floor console with floor shift  
 Hands-free cellular phone  
 Heated front leather seating areas  
 Heated windshield  
 Nuance leather seating areas  
 Personalized memory, driver's seat  
 Power front-seat lumbar controls  
 Sunroof  
 Three-channel garage door opener

### ETC. STANDARD

Analog instrumentation  
 Audible theft-deterrent system  
 Auto-dimming driver's side mirror  
 Dual-zone climate control  
 Full floor console with floor shift  
 Nuance leather seating areas  
 Personalized memory, driver's seat  
 Power front-seat lumbar controls  
 Rainsense wiper system



Eldorado Standard: AM/FM stereo with cassette, clock and six speakers



Optional: AM/FM cassette, four Bose amplified speakers



Optional: AM/FM cassette, four Bose amplified speakers, trunk-mounted CD



Optional: AM/FM cassette, four Bose speakers, digital sound processing, trunk-mounted CD

P O W E R T R A I N & P E R F O R M A N C E



Eldo Std.: 16"x7" cast with Michelin XW4 P225/60R16



Eldo Opt.: 16"x7" chrome with Michelin XW4 P225/60R16



ETC Std.: 16"x7" cast with Goodyear Eagle RS-A P225/60R16



ETC Opt.: 16"x7" chrome with Goodyear Eagle GA P225/60ZR16

ELDORADO PERFORMANCE: 0-60: 7.4 seconds TOP SPEED: 112 mph RANGE\*: 520 miles EPA EST. MPG: 17 city/26 hwy.

ETC PERFORMANCE: 0-60: 7.1 seconds TOP SPEED\*\*: 150 mph RANGE\*: 520 miles EPA EST. MPG: 17 city/26 hwy.

\* Estimated highway range: multiply EPA highway estimate by fuel tank capacity.

\*\* With optional Touring Coupe tires.

ENGINE

Northstar 4.6L V8, 32-valve DOHC

ETC: 300-hp, 295 lbs-ft torque

Eldorado: 275-hp, 300 lbs-ft torque

Aluminum block and heads

Compression ratio: 10.3:1

Tuned-port fuel injection

Crank-triggered ignition

Fuel: Premium

DRIVELINE

Front-wheel drive/transverse engine

Four-speed automatic transmission

Viscous converter clutch

Final drive ratio: 3.11:1

ETC: 3.71:1

SUSPENSION

Fully independent, coil spring

Integrated Chassis Control System

Road-Sensing Suspension

ETC: Continuously Variable

Steering: Power, Speed-Sensitive

ETC: MAGNASTEER

Turning circle: 42.0 ft

Brakes: Power, four-wheel disc, ABS

Traction Control: Bosch ASR5

CAPACITIES

Oil: 7 quarts

Coolant: 12.5 quarts

Fuel: 20 gallons

Trunk: 15.3 cu ft

Battery: 12-volt

Towing: 1000 lbs

Curb weight, lbs/kg:

Eldorado: 3768 lbs/1709 kg

ETC: 3800 lbs/1724 kg

INTERIOR DIMENSIONS, in./mm

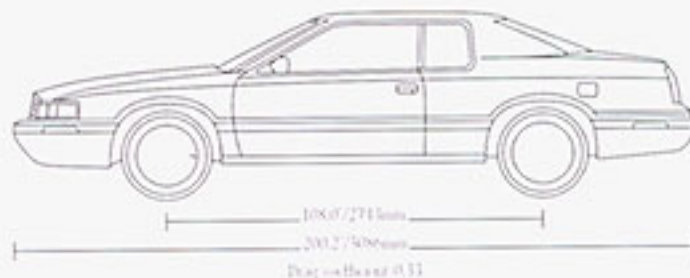
Head room .....front 37.8"/960mm rear 38.3"/972mm

Leg room .....front 42.6"/1081mm rear 36.1"/916mm

Hip room .....front 57.6"/1464mm rear 55.7"/1416mm

Shoulder room .....front 58.2"/1478mm rear 57.6"/1463mm

Seating capacity .....2/3



THE  
FEELING

THE LUXURY

D E V I L L E

THE

For 1996, the luxury of Northstar System performance with the Integrated Chassis

SYSTEM

Control System is now found in all DeVilles. In addition, the Concours includes the

Continuously Variable Road-Sensing Suspension system, as well as the MAGNASTEER

system. These technologies underwrite DeVille's full-size luxury and elegance.



DeVille Concours in the Upper Colorado River Basin Bioserve, Colorado.







D E V I L L E   C O N C O U R S



I N T U I T I V E   C O M F O R T

Luxurious Nuance leather seating areas highlight the prestigious style and luxury of Concourse for 1996. As evidence of Concourse's distinction, convenience and value, an eight-way memory driver seat uses each individual's Remote Keyless Entry fob to precisely recall the favored driving position of two individuals. Simplified and acoustically improved radios with features such as digital sound processing are also new.







D E V I L L E



H E I G H T E N E D P E R F O R M A N C E

The Northstar System and its technology bring the elegant DeVille to a truly higher standard of performance for 1996. Horsepower now stands at 275: A gain of 75 hp with improved fuel economy. Inside, new steering wheel radio, climate and optional cellular phone controls enhance safety and convenience. DeVille's new "user-friendly" radios open new listening horizons with available digital sound processing.

# D E V I L L E F E A T U R E S & O P T I O N S



## L A R G E C A P A C I T Y T R U N K

### STANDARD INTERIOR

Airbank System  
 Air recirculation control  
 Auto-dimming inside rearview mirror  
 Automatic door locking  
 Battery guard  
 Column shift  
 Controlled-cycle wipers  
 Cruise control  
 Digital instrumentation/trip odometer  
 Driver Information Center  
 Electronic climate control  
 Fingertip steering wheel controls  
 Five-position front shoulder belts  
 Front visor vanity mirrors  
 Illuminated entry  
 PASS-Key II security  
 Power door locks with anti-lockout  
 Power front seat adjusters/recliners  
 Power windows, driver express down  
 Reading lamps, front/rear  
 Rear window defogger  
 Rear window lockout

Remote keyless entry/key fob  
 Retained accessory power  
 Solar-Ray tinted glass  
 Tilt-adjusting wheel, leather-trimmed  
 Traction Control on/off switch  
 Trunk valet lockout  
 Twilight Sentinel  
 Wiper-activated headlamps

### STANDARD EXTERIOR

Brake/transmission interlock  
 Compact spare tire with cover  
 Daytime running lamps  
 Electronic Level Control  
 Front/rear crush zones  
 Power antenna  
 Power, heated sideview mirrors  
 Simplified, Class 2 electronics  
 Steel safety cage  
 Trunk, power pull-down  
 Tungsten-halogen headlamps

### OPTIONAL

Audible theft-deterrent system  
 Auto-dimming driver's side mirror

Electronic compass  
 Hands-free cellular phone  
 Heated front leather seating areas  
 Heated windshield  
 Illuminated front visor vanity mirrors  
 Nuance leather seating areas  
 Personalized memory, driver's seat  
 Power front-seat recliners  
 Sunroof

Three-channel garage door opener  
 Towing package, 3000 lbs

### CONCOURS, STANDARD

Auto-dimming driver's side mirror  
 Illuminated front visor vanity mirrors  
 Nuance leather seating areas  
 Personalized memory, driver's seat  
 Power front-seat lumbar controls  
 Power front-seat recliners  
 Rainsense wiper system  
 Rear-seat overhead vanity mirrors  
 Zebrano wood trim



DeVile Standard: AM/FM stereo with cassette, clock and six speakers



Concours Standard, DeVile Optional: AM/FM cassette, Active Audio, 11 speakers



Optional: AM/FM cassette, Active Audio, 11 speakers, trunk-mounted CD



Optional: AM/FM cassette, Active Audio, 11 speakers, digital sound processing, trunk-mounted CD

P O W E R T R A I N & P E R F O R M A N C E



DeVilte Std.: 16"x7" cast  
with Michelin XW4  
P225/60R16



DeVilte Opt.: 16"x7" chrome  
with Michelin XW4  
P225/60R16



Concours Std.: 16"x7" cast w/  
Goodyear Eagle RS-A  
P225/60R16



Concours Opt.: 16"x7" chrome  
w/Goodyear Eagle RS-A  
P225/60R16

DEVILTE PERFORMANCE: 0-60: 7.8 seconds TOP SPEED: 112 mph RANGE\*: 520 miles EPA EST. MPG: 17 city/26 hwy.  
CONCOURS PERFORMANCE: 0-60: 7.5 seconds TOP SPEED: 130 mph RANGE\*: 520 miles EPA EST. MPG: 17 city/26 hwy.

\* Estimated highway range: multiply EPA highway estimate by fuel tank capacity.

ENGINE

Northstar 4.6L V8, 32-valve DOHC

Concours: 300-hp, 295 lbs-ft trq

DeVilte: 275-hp, 300 lbs-ft trq

Aluminum block and heads

Compression ratio: 10.3:1

Tuned-port fuel injection

Crank-triggered ignition

Fuel: Premium

DRIVELINE

Front-wheel drive/transverse engine

Four-speed automatic transmission

Viscous converter clutch

Final drive ratio: 3.11:1

Concours: 3.71:1

SUSPENSION

Fully independent, coil spring

Integrated Chassis Control System

Road-Sensing Suspension

Concours: Continuously Variable

Steering: Power, Speed-Sensitive

Concours: MAGNASTEER

Turning circle: 44 ft

Brakes: Power, four-wheel disc, ABS

Traction Control: Bosch ASR5

CAPACITIES

Oil: 7 quarts

Coolant: 10.6 quarts

Fuel: 20 gallons

Trunk: 20 cu ft

Battery: 12-volt

Towing: 1000 lbs

Optional: 3000 lbs

Curb weight, lbs/kg:

DeVilte: 3929 lbs/1782 kg

Concours: 3970 lbs/1801 kg

INTERIOR DIMENSIONS, in./mm

Head room \_\_\_\_\_ front 38.5"/979mm rear 38.4"/975mm

Leg room \_\_\_\_\_ front 42.6"/1083mm rear 43.3"/1100mm

Hip room \_\_\_\_\_ front 56.1"/1426mm rear 55.9"/1420mm

Shoulder room \_\_\_\_\_ front 61.1"/1553mm rear 61.3"/1556mm

Seating capacity \_\_\_\_\_ 3/3





## S E C U R I T Y



### V O I C E - A C T I V A T E D P H O N E S

Optional digital/analog cellular phones provide convenience, security and driving safety for 1996 Cadillac owners. They work through the Driver Information Center to provide voice-activated, hands-free operation. The portable model can even be used outside the vehicle and still retain voice recognition, memory storage and hands-free operation.



### S E C U R E D Q U A R T E R S

Remote Keyless Entry locks or unlocks the doors or trunk from approximately 30 feet away, and activates the Illuminated Entry System to turn on interior lights for added security. As part of this feature, parking lamps flash to confirm that doors are locked or unlocked. Twilight Sentinel and child security door locks also stand guard.



## S A F E T Y



### S T R U C T U R E & I N N O V A T I O N

Within every Cadillac, front and rear crush zones help absorb impact, and a safety cage resists it. All Cadillacs meet 1997 federal side impact standards, some since 1992. Inside are dual front air bags, and for DeVille the Airbank System helps protect all three front passengers.



### R A I N - S E N S I N G T E C H N O L O G Y

A Rainsense wiper system is standard on three Cadillac models and marks an exclusive U.S. first for Cadillac. In auto-delay mode, Rainsense technology uses infrared beams to detect moisture on the windshield and activate wipers. All Cadillacs feature daytime running lamps, while Northstar models add wiper-activated headlamps for enhanced safety.







Cadillac Owner Privileges travel with you virtually anywhere throughout the U.S. and Canada. They comprise an extraordinary package of assets to make Cadillac owners some of the most cared-for luxury car owners in the world.

- CADILLAC ROADSIDE SERVICE is available 24 hours a day, 365 days a year, by phoning Cadillac Customer Assistance at 1-800-882-1112. This includes no-charge Cadillac road service for the first 48 months or 50,000 miles of ownership, but is not limited to the model year of your Cadillac.
- EMERGENCY ROAD SERVICE is also available 24 hours a day, 365 days a year, almost anywhere in the U.S. or Canada and can provide help for flat tires, lost keys or even empty fuel tanks.
- TRIP INTERRUPTION PROTECTION will reimburse you for hotel, food and even alternate transportation expenses incurred as a result of a warranted repair. This assurance stands behind you for 48 months or 50,000 miles.
- TRIP ROUTING SERVICE is available with a phone call. A computerized travel log and a complimentary Rand McNally U.S. Road Atlas is also part of the service.
- WARRANTY PROTECTION safeguards your Cadillac, including its tires, for 48 months or 50,000 miles with no deductible. Body rust-through is covered for six years or 100,000 miles.
- ALTERNATE TRANSPORTATION OPTIONS are offered by your dealer should your Cadillac require repairs covered under your new vehicle warranty. See your dealer for details regarding "Gold Key Courtesy Transportation."
- GOLD KEY DELIVERY is designed to familiarize you with your new Cadillac, introduce you to key dealership personnel and equip you with a complete package of ownership materials.

## A C Q U I S I T I O N   O P T I O N S



Whether you buy or lease a new Cadillac, you can feel confident that this is one automobile designed and engineered to remind you that luxury can be made very affordable. Your Cadillac sales executive will provide full details about these various acquisition options:

- PURCHASE is especially wise with GMAC financing because Cadillacs have traditionally maintained a high residual value at trade-in.
- SMARTLEASE allows you to acquire a new Cadillac more frequently, minimizes initial costs and lowers monthly payments, compared to conventional purchase. It can also hold significant tax advantages for businesses.
- SMARTLEASE PLUS embodies all of the advantages of SmartLease, but without the inconvenience of monthly payments. There is also a substantial reduction in total cash outlay.

**The GM Card** allows you to apply your bonus Earnings toward the purchase or lease of a new Cadillac. If you carry The GM Card, consider using its purchasing power.



This extended service contract for new Cadillacs is the only one backed by General Motors. It can protect your vehicle for as long as six years or 100,000 miles from the date of your vehicle's first delivery or use.

1 9 9 6 I N T E R I O R C O L O R S

INTERIOR LEATHER

Standard on Eldorado Touring Coupe, Seville STS and DeVille Concours. Available at Extra Charge on Eldorado, Seville SLS and DeVille



15 Neutral Shale



16 Cappuccino Cream



19 Black



21 Dark Blue



42 Sea Mist Green



66 Beechwood



75 Dark Cherry

INTERIOR CLOTH  
Eldorado, Seville SLS and DeVille



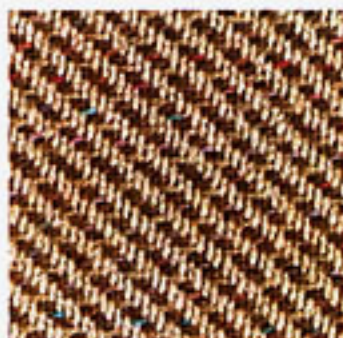
15 Neutral Shale ●



21 Dark Blue ●



75 Dark Cherry ●



15 Neutral Shale ■

● SARATOGA is standard on DeVille

■ CHARISMA is standard on Eldorado and Seville SLS

1 9 9 6 E X T E R I O R C O L O R S



21 Med. Montana Blue



33 Frost Beige



39 Dark Adriatic Blue



40 Cotillion White



41 Sable Black



46 Shale



54 Sea Mist Green



57 Shale Beige



72 Carmine Red



77 Dark Cherry



91 Polo Green



92 Calypso Green



95 Amethyst



86 Pearl Red ■



93 White Diamond ■

■ Available At Extra Charge

## IMPORTANT WORDS ABOUT THIS CATALOG

• • • • •

We have tried to make this catalog as comprehensive and factual as possible. We reserve the right, however, to make changes at any time, without notice, in prices, colors, materials, equipment, specifications, models and availability. Since some information may have been updated since the time of printing, please check with your Cadillac dealer for complete details.

## ENGINES

• • • • •

Cadillacs are equipped with engines produced by different operating units of GM, its subsidiaries or suppliers to GM worldwide.

## ASSEMBLY

• • • • •

Cadillacs are assembled by different operating units of General Motors, its subsidiaries or suppliers to GM worldwide. Cadillacs incorporate thousands of components produced by different operating units of GM, its subsidiaries or suppliers to GM worldwide. We sometimes find it necessary to produce Cadillacs with different or differently sourced components than originally scheduled. All such components have been approved for use in Cadillacs and will provide the quality performance associated with the Cadillac name. Since some options may be unavailable when your vehicle is assembled, we suggest that you verify that your vehicle includes the equipment you ordered, or if there are changes, that they are acceptable to you.

## UPDATED SERVICE INFORMATION

• • • • •

Cadillac regularly sends its dealers useful service bulletins about Cadillac products. Cadillac monitors product performance in the field. We then prepare bulletins for servicing our products better. Now you can get these bulletins too. Ask your dealer. To receive ordering information, call toll-free 1-800-551-4123.

## CORROSION PROTECTION

• • • • •

Cadillacs are designed and built to resist corrosion. All body sheet metal components are warranted against rust-through corrosion for 6 years/100,000 miles. There is no deductible for rust-through repairs. Application of additional rust-inhibiting materials is not required under the corrosion coverage and none is recommended.

• • • • •

CADILLAC, the CADILLAC emblem, CADILLAC ROADSIDE SERVICE, CONCOURS, DEVILLE, ELDORADO, SEVILLE, AIRBANK, CREATING A HIGHER STANDARD, DEXRON, GENERAL MOTORS, the GM emblem, GM PROTECTION PLAN, NORTHSTAR, SOLAR-RAY and TWILIGHT SENTINEL are registered trademarks of the General Motors Corporation. MAGNASTEER is a trademark of the General Motors Corporation. CADILLAC OWNER PRIVILEGES is a service mark of the General Motors Corporation. PASS-KEY is a registered trademark of the Delco Electronics Corporation. GMAC and SMARTLEASE are registered trademarks of the General Motors Acceptance Corporation. DEX-COOL is a trademark of Texaco Lubricants Company.

Litho in U.S.A. 8/95 © 1995 GM Corp.

All Rights Reserved. Always wear safety belts, even with air bags.

## OCCUPANT PROTECTION

• • • • •

Supplemental Inflatable Restraint: Manual lap/shoulder safety belts and air bags, driver/right front passenger • Manual lap/shoulder safety belts, outboard rear-seat positions • Manual lap safety belts, center seat positions • Dual sun visors • Energy-absorbing steering column • Energy-absorbing instrument panel • Interlocking door latches • Safety armrests • Break-away inside rearview mirror • Security door locks and door retention components • Laminated windshield glass, urethane-bonded • Head restraints, front, adjustable or integral • Side door beams • Passenger-guard inside door lock handles • Safety belt use reminder system • Front and rear crush zones • Tempered safety glass, side and rear windows • Pressure lock radiator cap

## CRASH AVOIDANCE

• • • • •

Audible disc brake lining wear indicators • Backup lamps • Brake system with dual master cylinder plus warning light • Brake/transmission interlock • Center high mounted stop lamp • Directional signal control • Dual action hood latch (front-opening) • Four-way hazard warning flashers • Illuminated heat and defogger controls • Low-glare finish (inside windshield moldings, wiper arms and blades, metallic steering wheel surfaces) • Parking lamps • Safety road wheel rims • Side marker lamps and reflectors • Starter safety switch • Tires with built-in tread wear indicators • Windshield defoggers, washer and multi-speed wipers

## THEFT DETERRENCE

• • • • •

Visible vehicle identification number • Laser-etched VIN plate • Theft-deterrent steering column lock • Theft-deterrent key locking system • Ignition key removal audible reminder

## WARRANTY

• • • • •

The GM 4-year/50,000-mile Gold Key Bumper to Bumper limited warranty covers repairs for any new Cadillac, including labor and parts, to correct any defects in material or workmanship occurring during the warranty period. The complete vehicle, including tires, will be covered for 4 years or 50,000 miles, whichever comes first, except for adjustments and normal maintenance items. Plus free towing and a portfolio of other services. There is no deductible on any Cadillac warranty. See your Cadillac dealer for terms of these limited warranties.



**CADILLAC**  
CREATING A HIGHER STANDARD



36 USC 380



Atlanta 1996  
TM, © 1992 ACOG

Official Sponsor of the 1996 U.S. Olympic Team.  
Official Sponsor of the 1996 Olympic Games.



Printed on recycled paper with soy-based inks.