



*A SPECIAL NEW BREED:
THE 1986 CADILLAC TOURING EDITIONS*



PERFORMANCE AND LUXURY

Cadillac introduces a new experience in high-performance luxury cars: the 1986 Cadillac Touring Editions. For people who want Cadillac luxury, yet appreciate the finer points of vehicle dynamics.

Luxurious, not spartan.

Firm, not harsh.

Luxurious in the way you expect from Cadillac. Elegant. Understated. With gray leather seating areas, including rear headrests. And those touches that remind you that, yes, you are driving a Cadillac.

But what a driving experience: This new Cadillac Touring Sedan, for example, rides on a firm Touring Suspension that inspires confidence on twisty roads and responds deftly to your every command.

The 1986 Cadillac Touring Editions: world-class Cadillacs for people who take their driving... comfort... and luxury... seriously.

The anatomy of 1986 Cadillac Touring Edition ride and handling.

Compare basic dimensions and you'll see that Cadillac Touring Editions are sized right for the performance enthusiast.

Overall length: 195.0".
For easy maneuvering.

Wheelbase: 110.8".
Longer, for more comfort (see chart).

Body width: 71.7".
Also for more comfort.

Overall height: 55.0".
Lower overall, but with *more* headroom, front *and* rear.

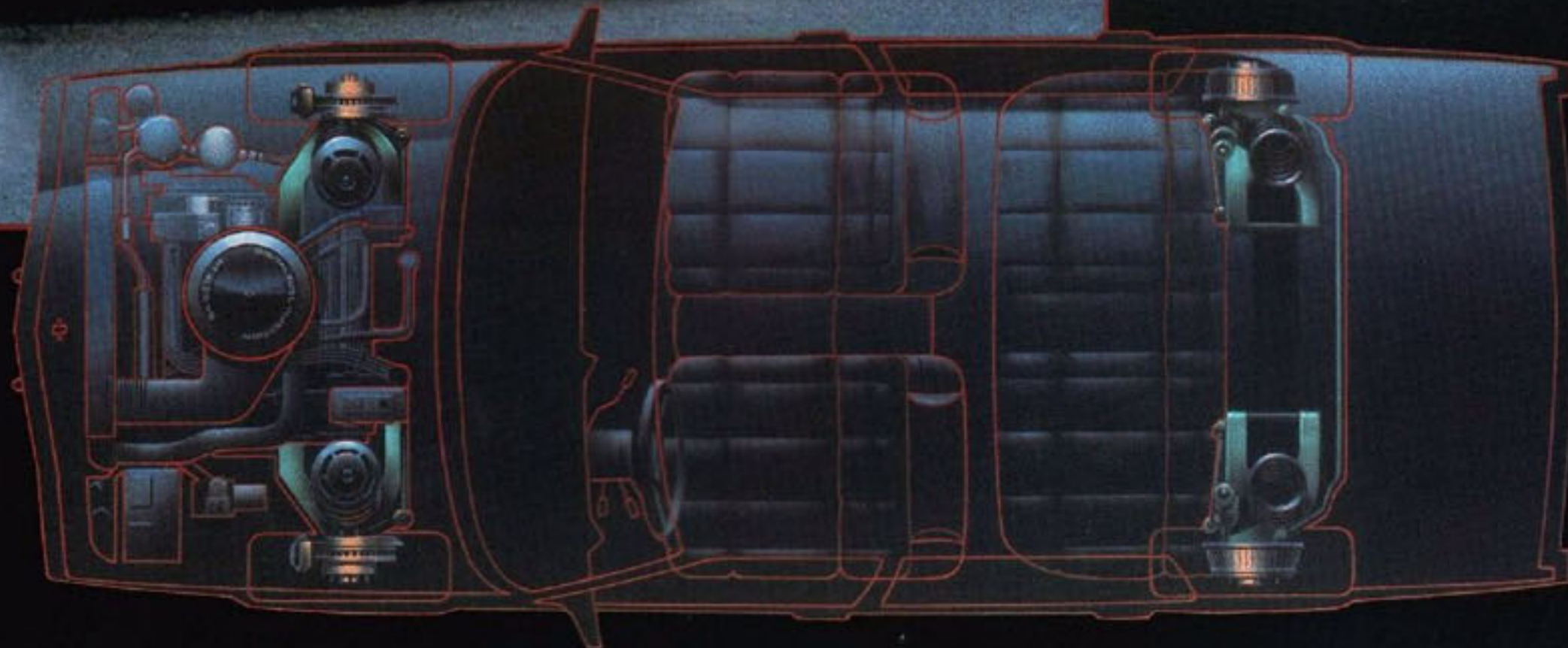
Seating capacity: Six.
Retains luxury and comfort for six.

Suspension: Independent four-wheel.

Not so on Audi or Volvo. **Front-wheel drive with transverse-mounted V8.** A Cadillac exclusive. Gives impressive traction in adverse weather.

Feature	1986 Cadillac Touring Editions	1986 Volvo 760 GLE	1986 Mercedes-Benz 300E	1986 Audi 5000S	1986 BMW 735i
Overall length (in.)	195.0	188.4	187.2	192.7	197.4
Wheelbase (in.)	110.8	109.1	110.2	105.8	110.0
Body width (in.)	71.7	68.9	68.5	71.4	70.9
Overall height (in.)	55.0	55.5	56.9	55.7	56.3
Curb weight (lbs.)	3321*	3064	3295	2844	3585
Seating capacity	6	5	5	5	5
Front-wheel drive	Yes	No	No	Yes	No
Transverse V8	Yes	No	No	No	No
Independent four-wheel suspension	Yes	No	Yes	No	Yes
Electronic Level Control	Yes	Yes	No	No	No

* Touring Coupe, Touring Sedan, 3376.





HANDLING AND RESPONSIVENESS

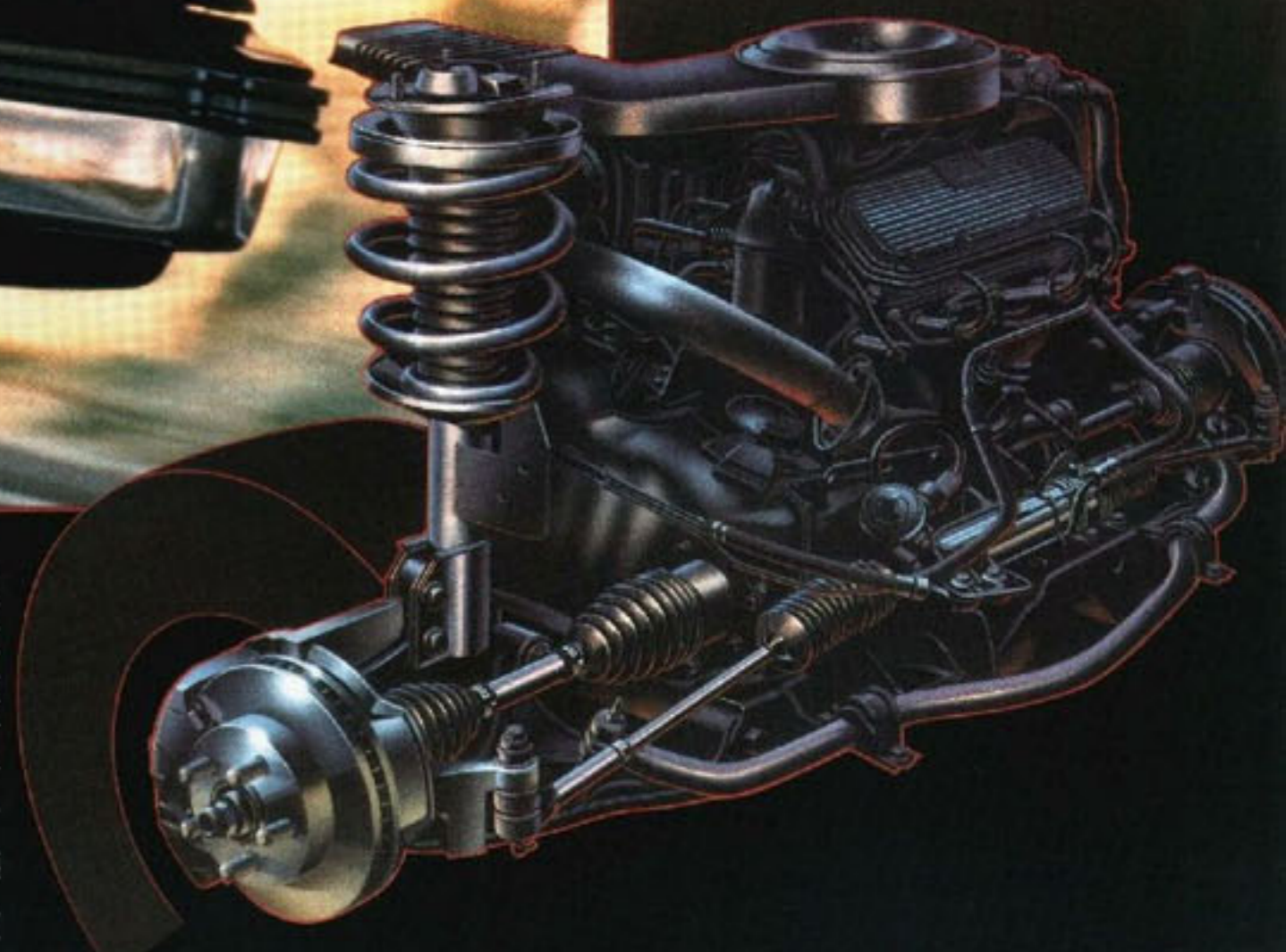
Discover what "Touring" means: It's an enviable combination of firm, competent handling and the quiet, smooth Cadillac ride. Here's what comes between you and the pavement:

Firmer front and rear springs and their bushings, plus tighter-valved front and rear struts.

Solid (rather than hollow) 32mm front stabilizer bar along with increased-diameter rear stabilizer bar (18mm vs 12mm).

Quicker 18.4:1 ratio steering (19.4:1 is standard), with enhanced on-center feel.

Fifteen-inch aluminum alloy wheels and high-performance P215/65R15 Goodyear Eagle GT steel-belted radial blackwalls.



The Touring Suspension, front-wheel-drive V8 and transmission story.

Cadillac's Touring Suspension. Engineers have balanced tight, responsive handling with the Cadillac ride. If you've never driven a handling Cadillac, you're in for a pleasant surprise. And if you thought that "Cadillac" and "handling" were mutually exclusive, drive one.

The HT 4100 DFI V8 with PEP. PEP: Performance Enhancement Package. A larger-diameter exhaust system (2½" vs 2¼") improves engine breathing. The engine responds with five more horsepower, a throatier exhaust sound, and more torque to enhance performance. Note: See your dealer for availability date of the Performance Enhancement Package (PEP).

The refined transaxle. PEP continues: A high-performance torque converter improves off-the-line performance.

A recalibrated 1-2 shiftpoint at wide-open throttle, Viscous Converter Clutch engagement at 38 mph (increased from 24 mph to sharpen performance in the 25-35 mph range) and a final

drive ratio (effective) of 3.33:1 (vs 2.97:1) offer performance that's scintillating rather than sedate.

On average, these PEP refinements to the powertrain reduce 0-50 times to 8.9 seconds... about one full second less than the base De Ville with Touring Suspension. You're more confident when you need to accelerate, such as when you're merging with expressway traffic.

Meaningful aerodynamics.

That air dam in front and spoiler lip on the rear deck are more than just cosmetic. They lower the Touring Editions' Cd (Coefficient of drag, a measure of wind resistance) compared to base De Villes and Fleetwoods.

Suspension feature	1986 Cadillac Touring Editions	1986 base De Villes
Suspension spring rate, front (pounds per inch)	137.0*	114.2
Suspension spring rate, rear (pounds per inch)	222.7*	205.6
Stabilizer bar bushings, front and rear (durometer)	65*	60
Stabilizer bar diameter, front (mm)	32 solid*	32 hollow
Stabilizer bar diameter, rear (mm)	18 solid*	12 solid
Lower control arm bushings, front (both bushings) (pounds per inch)	29,978*	17,444
Lower control arm bushings, rear (both bushings) (pounds per inch)	48,536*	37,116
Steering effort at the input to the pinion for enhanced on-center feel (in.-lbs.)	19-25*	15-21
Tire size	P215-65R15*	P205-75R14
Performance enhancement feature		
Horsepower @ rpm	135/4300	130/4200
Torque (lb.-ft) @ rpm	205/2300	200/2200
1-2 transmission gear shiftpoint at wide-open throttle (rpm)	4,850	4,700
Final drive ratio (effective)	3.33:1	2.97:1

* And base De Ville or Fleetwood with available Touring Suspension.



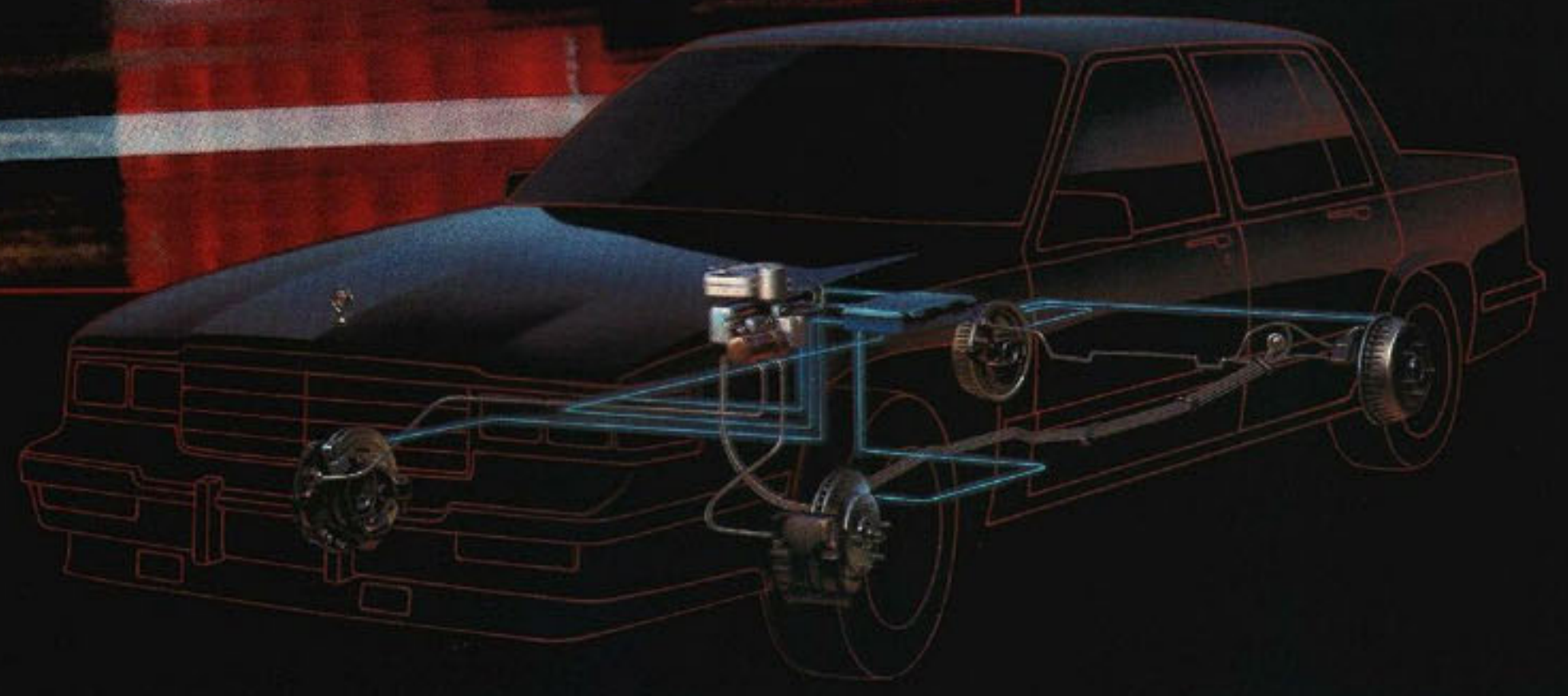
ANTI-LOCK BRAKING SYSTEM

New for 1986, the Cadillac Touring Editions have available one of the world's most sophisticated anti-lock braking systems (ABS).

Magnetic sensors located at each wheel constantly monitor individual wheel speed and provide a signal to the electronic control unit.

The electronic control unit determines impending wheel slip, based on changes in wheel speed during braking, and adjusts brake force as required on the wheels up to 15 times per second automatically—far faster than is humanly possible.

Thus, this system minimizes the chance of brake-induced skidding. Result: You are able to maintain steering control during emergency stops on almost any type of road surface under any condition.



Panic stop? The safest distance between two points is a straight line. Or is it?

How ABS works.
An on-board Electronic Controller (EC) consists of two identical microprocessors with identical programs. Both microprocessors receive and analyze input from each of the four wheel sensors. If the data fall within preset limits, anti-lock commands are given independently by each microprocessor and cross-checked. Once the EC gives an electronic

"go," the hydraulic system can control one brake or all brakes as required. The EC applies and releases each front brake independently and the rear brakes as a pair up to 15 times per second, automatically, decreasing stopping distance while maintaining directional control on almost any type of road surface or condition.
An educated brake pedal.
When you step on the brake and

the EC senses impending wheel slip, you feel the brake pedal rise, hear a clicking sound and feel pedal pulsations. However, normal braking action is identical to non-ABS-equipped cars.
As soon as you release the brake, the ABS system returns to normal braking. If the EC senses a fault in the system, or if either one of two pressure switches fails, the system automatically

reverts to conventional braking and alerts you by turning on an amber "anti-lock" indicator on the instrument panel.
Is a straight line always best?
With ABS, a driver in an emergency simply applies steady force to the brake pedal. ABS automatically stops the car in the shortest possible distance—without locking a wheel.

And consider this: experts have long known that steering while stopping is important. You can't steer skidding wheels. ABS permits you to steer while stopping—even panic stopping. So the safest distance between two points may be the line that you steer. Note: See your dealer for availability date of Anti-Lock Braking System.



ADVANCED ELECTRONICS

The Touring Editions' functional electronics increase passenger comfort, convenience and entertainment, and improve engine operation.

BCM. Body Computer Module. Increases driver and passenger comfort in five important ways.

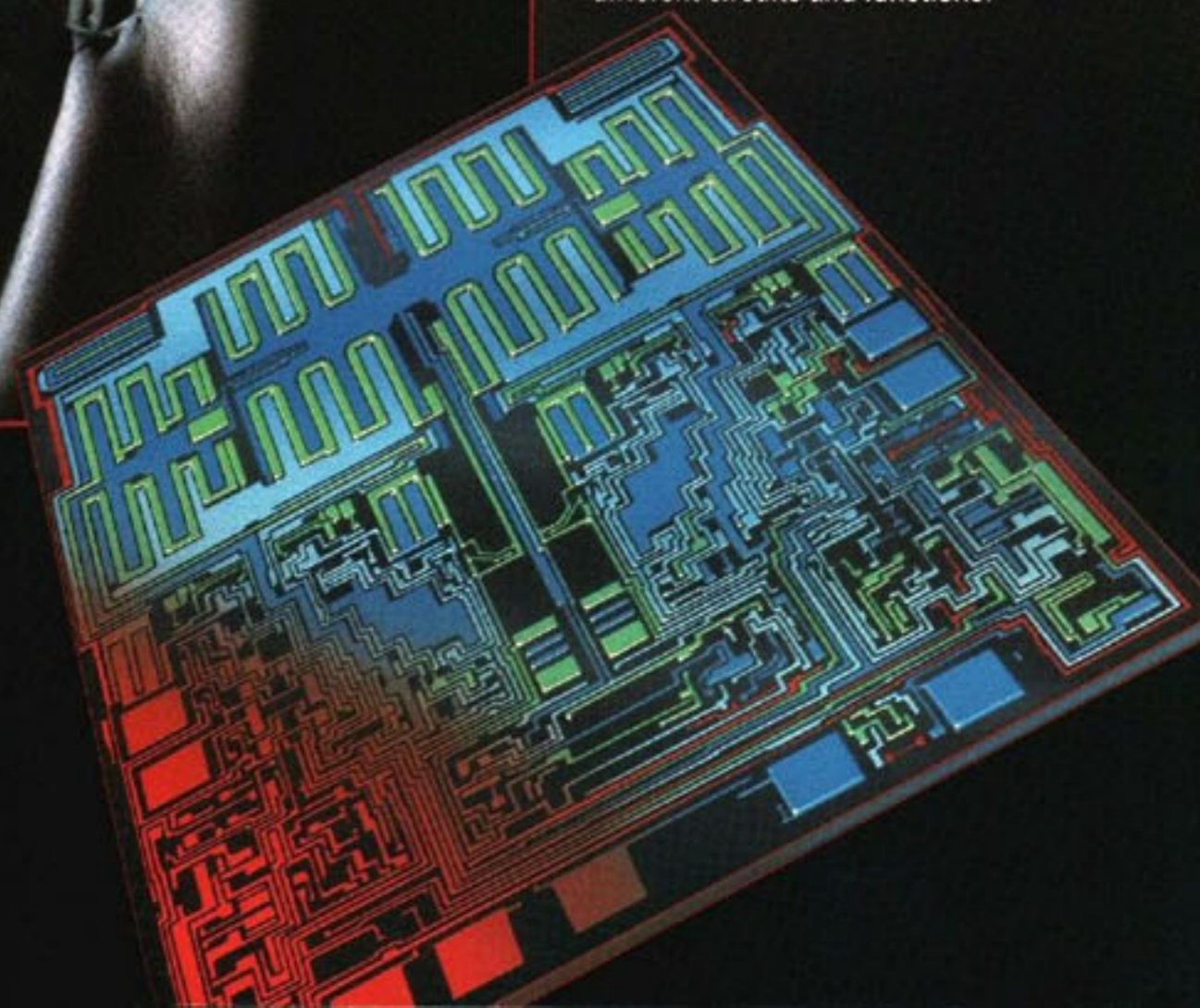
ECM. Engine Control Module. Precisely controls engine operation from cold start through wide ranges of driving and temperatures.

ECC. Electronic Climate Control. Set inside temperature as precisely as one degree.

ETR. Electronically Tuned Receiver. Standard AM/FM Stereo unit with seek and scan, digital station and clock display, and many convenience features.

Fuel Data Center. Displays average and instantaneous mpg, estimated driving range, fuel used, and fuel remaining.

On-board Diagnostics. Trained service technicians can diagnose 46 different circuits and functions.



The most functional advanced electronics in Cadillac history.

Body Computer Module (BCM). Pioneered by Cadillac, it offers these five significant benefits for driver and passengers:

1. Retained Accessory Power. When you switch the ignition off, you can operate the standard power windows and available power trunk lid release for up to ten minutes, or until someone opens a door.

2. Anticipates outside temperature changes. Regulates the Electronic Climate Control (ECC), increasing cooling or heating capacity to maintain comfort inside the passenger compartment, automatically, before passengers ever sense a need.

3. Controls electric cooling fans precisely. Turns them on (when needed). Digital fan speed control reduces power demands.

4. Low air conditioning refrigerant. Senses this condition and signals the driver.

5. Compressor protection. If the refrigerant gets too low, the BCM shuts the air-conditioning compressor off and switches the ECC to "Econ," preventing expensive compressor repairs.

Engine Control Module (ECM). Electronically regulates the 4.1 V8's digital fuel injection. Sensors report air and coolant

temperatures, engine rpm, transmission gear, throttle position, spark advance, exhaust oxygen content, road speed and fuel flow. The ECM processes this information about 80 times per second and delivers consistent engine performance along with fast, sure starts.

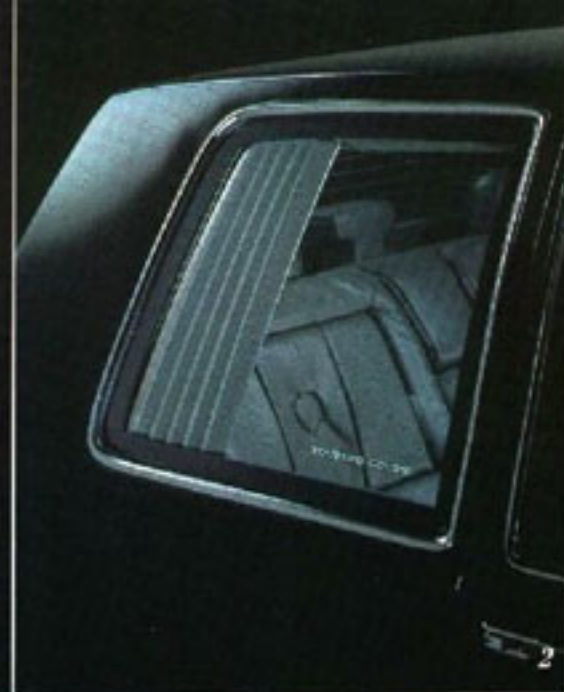
Electronic Climate Control (ECC). Touch specific buttons to choose heating/cooling, defogging, defrosting, and automatic or

manual fan speed control. Touch the red (warmer) or blue (cooler) buttons to set the inside temperature display to the number you want.

Conversations between the BCM, ECM and ECC. You never hear them, but they "talk" to each other.

The accompanying chart shows how each system—BCM, ECM and ECC—interacts while you're driving.

Feature	Body Computer Module	Engine Control Module	Electronic Climate Control
Retained Accessory Power	•		
Regulate idle quality and speed during power steering operation with car stopped	•	•	
Regulate interior temperature automatically	•		•
Adjust idle speed during cold engine operation		•	•
Vehicle diagnostics	•	•	•
Available digital instrument cluster	•		



Touring Coupe and Sedan Standard and Available Features:

1. Standard gray leather seating areas, including leather-trimmed front and rear headrests.
2. Standard removable louvers on Touring Coupe.
3. Standard rear deck lid spoiler.
4. Available Delco AM/FM Stereo radio with cassette tape player and five-band graphic equalizer (ETR).
5. Available cellular telephone.
6. Standard front air dam with integral fog lamps.
7. Standard 15" aluminum alloy wheel with P215/65R15 high-performance, low-profile Goodyear Eagle GT steel-belted radial blackwall.



The 1986 Cadillac De Ville and Fleetwood:

Here's your chance to see and appreciate the Cadillac De Ville and available Fleetwood models.

At left in the picture is the handsome Sedan de Ville shown in available Almond Gold Firemist. A companion Coupe de Ville, shown in Platinum, is at the right. And at the top in the center, shown in Sable Black, is the available elegant Fleetwood sedan.

You get all of the traditional Cadillac luxury expressed in a new, contemporary feeling. With full, six-passenger room and comfort. Plus the optimum traction and responsive power offered by an exclusive front-wheel-drive, transverse-mounted V8 engine.

These are Cadillacs whose advanced functional electronics provide maximum driving convenience with minimum driver effort. Cadillacs that offer contemporary road manners that tame the twists and turns. Without compromising Cadillac luxury and comfort.

But you can have the same confident ride and handling in these Cadillacs as you can in a Touring

Sedan or Coupe. Just ask for the available Ride and Handling Touring Package.

You can also order one of the world's most sophisticated Anti-Lock Braking Systems on De Ville and Fleetwood. Note: See your dealer for availability date of Anti-Lock Braking System.



GOLD KEY DELIVERY SYSTEM.

Since Cadillac began the whole idea of nationwide automotive service in 1926, it is only fitting that today Cadillac has a system of preferential treatment you expect as a Cadillac owner.

Cadillac's Gold Key Delivery System begins with a thorough inspection of your Cadillac. It continues with an orientation drive with your sales representative. You also get an audio cassette tape and a full tank of fuel. Gold Key Delivery culminates with a presentation to you of two sets of 23-karat gold-plated keys and a personalized Gold Key Identification Card.

Among other benefits, your Gold Key Identification Card entitles you to request an exclusive Gold Key vehicle inspection *at no additional charge* at your convenience or at your first regularly scheduled maintenance visit.

Cadillac's Gold Key Delivery System. Unique in the luxury car field.

Standard features comparison: De Ville, Touring Editions, Fleetwood

Cadillac De Ville Standard Features:

Comfort and Convenience

Electronic Climate Control with Outside Temperature Digital Display. Change interior temperature setting as precisely as one degree.

Six-Passenger Seating Capacity. Full-size roominess for six adults.

Retained Accessory Power.

Allows you to operate the power windows or the available remote trunk lid release for up to ten minutes after you turn off the ignition or until a door is opened. It's part of the Cadillac-exclusive Body Computer Module, a precise digital control system.

Fuel Data Center with Digital Fuel Gauge.

Displays your instantaneous and average mpg, estimated driving range and more.

As Well As:

- Armrest, Center—Front and Rear • Ash Receivers—Two Front and Two Rear • Assist Handles—Overhead • Audible Reminders—For Headlights On, Key in Ignition, Driver's Safety Belt • Body Computer Module • Cigarette Lighters—One Front and Two Rear • Clock, Digital Display (in radio) • Defogger, Front Side Windows • Door Locks, Electrically Powered • Door Pull Swing Handles • Gold Key Delivery System • Headrests, Front Seat—Adjustable • Lamp Monitors—Front and Rear • Lights, Exterior—Includes Front Cornering Lamps and Tungsten Halogen Low- and High-Beam Headlamps • Lights, Interior—Underhood, Glove Compartment, Front Ash Receivers, Sunshade Support, Door Courtesy and Warning, Sail Panel Courtesy, Luggage Compartment • Litter Receptacle, Carpeted • Low Fuel Level Indicator • Low Windshield Washer Fluid Level Indicator • Mirrors, Chrome—Right and Left, Outside Rearview,

Remote Controlled—Right Convex • Multifunction Turn Signal Lever for Wipe/Wash/Dim • Pockets, Front Seatback • Seat, Notch Bench, Front (Three-Passenger) • Seat Adjuster—Six-Way Power (Driver's Side) • Soft Ray Tinted Glass • Trip Odometer—Push-to-Reset • Visor Vanity Mirror—Passenger • Visors, Padded Dual Sun with Extensions • Windows, Electrically Powered • Windshield Wipers, Two-Speed—With Fluidic Windshield Washer System

Sound System

Antenna. Electrically Powered
Radio. 2000 Series AM/FM Stereo with Seek and Scan and Digital Display (Electronically Tuned Receiver)

Appearance and Protection

Closed-In, Limousine-Style Rear Window Treatment, New for 1986. This formal style brings added elegance to De Ville.

Door-into-Roof Design. For a quality fit and a custom-tailored appearance.

Elegant New Seat Trim Design. For a richer, more formal appearance.

Center High-Mounted Stop Lamp. Provides additional indication of vehicle braking. Its high center-mounted location makes it more visible to drivers following behind.

Anti-Corrosion Treatments. In all, over 100 areas are specially treated.

Clearcoat Finish. Two final coats of clear acrylic are applied for a deep, rich luster.

Wide Rocker Panel Molding, New for 1986.

Low Brake Fluid Warning Indicator, New for 1986.

Wreath and Crest Ornamentation.

As Well As:

- Accent Striping (Deck Lid Only)
- Bumper Guards—Front
- Bumper Rub Strip—Front and Rear
- Door Panels, Single Piece

Inner and Outer • Door Sill Plates • Floor Carpet • Instrument Panel—Two-Tier Design • Luggage Compartment, Carpeted • Moldings—Including Body Side (Car-Color), Wide Rocker Panel, Wheel Opening • Wheel Discs

Engine/Chassis

Front-Wheel Drive. Provides impressive traction in adverse weather.

HT 4100 (4.1 Liter) DFI V8 Gasoline Engine. This transverse-mounted, front-wheel-drive V8 is a Cadillac exclusive. Includes Digital Fuel Injection and On-Board Computer Diagnostics.

Four-Speed Automatic Transmission with Overdrive and Viscous Converter Clutch. A Cadillac exclusive, the Viscous Converter Clutch provides a silkier drivetrain feel than conventional torque converters. The microprocessor-controlled Viscous Converter Clutch automatically adjusts for altitude and outside temperature to help assure consistently smooth operation.

Independent Four-Wheel Suspension. For a smooth ride and responsive handling.

Electronic Level Control. Automatically helps keep the car level.

Steel-Belted All-Seasons Radial Whitewall Tires. With a new lower rolling-resistance design.

As Well As:

- Battery—Delco-GM Freedom™ II-Plus • Body-Frame Integral Construction • Brakes, Power—Front Disc • Generator, 120 Amp • High-Energy Ignition • Parking Brake Release—Automatic • Spare Tire, Compact High-Pressure Type, Laydown • Spare Tire Cover • Steering, Power-Assisted—Rack and Pinion • Wheel Balance, Two-Plane Dynamic—Balance weights are put on both the inside and outside wheel rim flanges, if necessary, for added rolling smoothness • Wheels and Tires—Computer Match-Mounted

Specific Features of Cadillac Touring Editions:

All De Ville Standard Features, Plus:

Exterior Colors: Cotillion White, Sable Black, Platinum, Academy Gray.

Exterior Features:

Body side accent moldings available only in Academy Gray. Body-color electrically powered outside rearview mirrors. Fog lamps with specific covers. Front air dam. Gray and body-color accents. Specific gray rocker moldings with silver highlights. "Touring Coupe" or "Touring Sedan" applied to rear side windows. Rear deck lid spoiler. Removable rear quarter window louvers for Touring Coupe.

Interior:

Gray leather seating areas, including front and rear headrests. Gray leather transmission lever knob. Gray leather tilt-wheel lever knob (on available tilt-wheel steering). Gray leather steering wheel rim and horn pad.

Engine and chassis:

HT 4100 DFI V8 with powertrain modifications.

Four-speed automatic transmission with performance enhancements and 3.33:1 effective final drive ratio.

Touring Suspension: Firmer front and rear springs, revalved (to exacting Cadillac specifications) front struts and rear shock absorbers. Firmer front and rear strut bushings. Solid (vs hollow) front stabilizer bar. Larger (18mm vs 12mm) rear stabilizer bar. Firmer front and rear stabilizer bar grommets. Electronic Level Control.

Power rack and pinion steering with faster (18.4:1 vs 19.4:1) ratio and enhanced on-center feel. 15" aluminum alloy wheels and P215/65R15 high-performance, low-profile Goodyear Eagle GT steel-belted radial blackwalls.

Specific Features of Fleetwood Coupe and Sedan:

All De Ville Standard Features, Plus:

Accent striping—side and deck lid. Digital instrument cluster. Dual Comfort front seats. Electroluminescent opera lamps with exclusive rectangular design (Fleetwood Sedan). "Fleetwood" script on deck lid and glove box door. "Fleetwood" script "silk-screen" painted on rear quarter windows. Formal Cabriolet roof treatment on Fleetwood Coupe and Sedan. Mirrors, electrically powered, outside rearview—car color. Rear reading lamps—prefocused. Recliners, manual—driver and front passenger seats. Seat Adjuster, six-way power—passenger. Specific interior trim and seat design with either Royal Prima cloth or available leather seating areas. Tiffany floor carpet. Trunk lid release, power. Wire wheel covers.

4-Year/50,000-mile Warranty.

And once again, the quality of every 1986 Touring Edition, De Ville, and Fleetwood is backed by a 4-year/50,000-mile limited warranty. In some cases, a deductible applies. See your dealer for details.

A Word About This Brochure.

Cadillac Motor Car Division reserves the right to make changes at any time, without notice, in prices, colors, materials, equipment, specifications and models. Check with your Cadillac dealer for complete information.

LET'S GET IT TOGETHER... BUCKLE UP!





A SPECIAL NEW BREED OF CADILLAC.