

1983

Best of all...

it's a

Cadillac

A WORD ABOUT THIS CATALOG:

We have tried to make this catalog as comprehensive and factual as possible and we hope you find it helpful. However, since the time of printing, some of the information you will find here may have been updated. Also, some of the equipment shown or described throughout this catalog is available at extra cost. Your dealer has details and, before ordering, you should ask him to bring you up to date.

The right is reserved to make changes at any time, without notice, in prices, colors, materials, equipment, specifications and models. Check with your Cadillac dealer for complete information.

Cadillac.

Through the years, it has represented excellence
for generations of Americans.

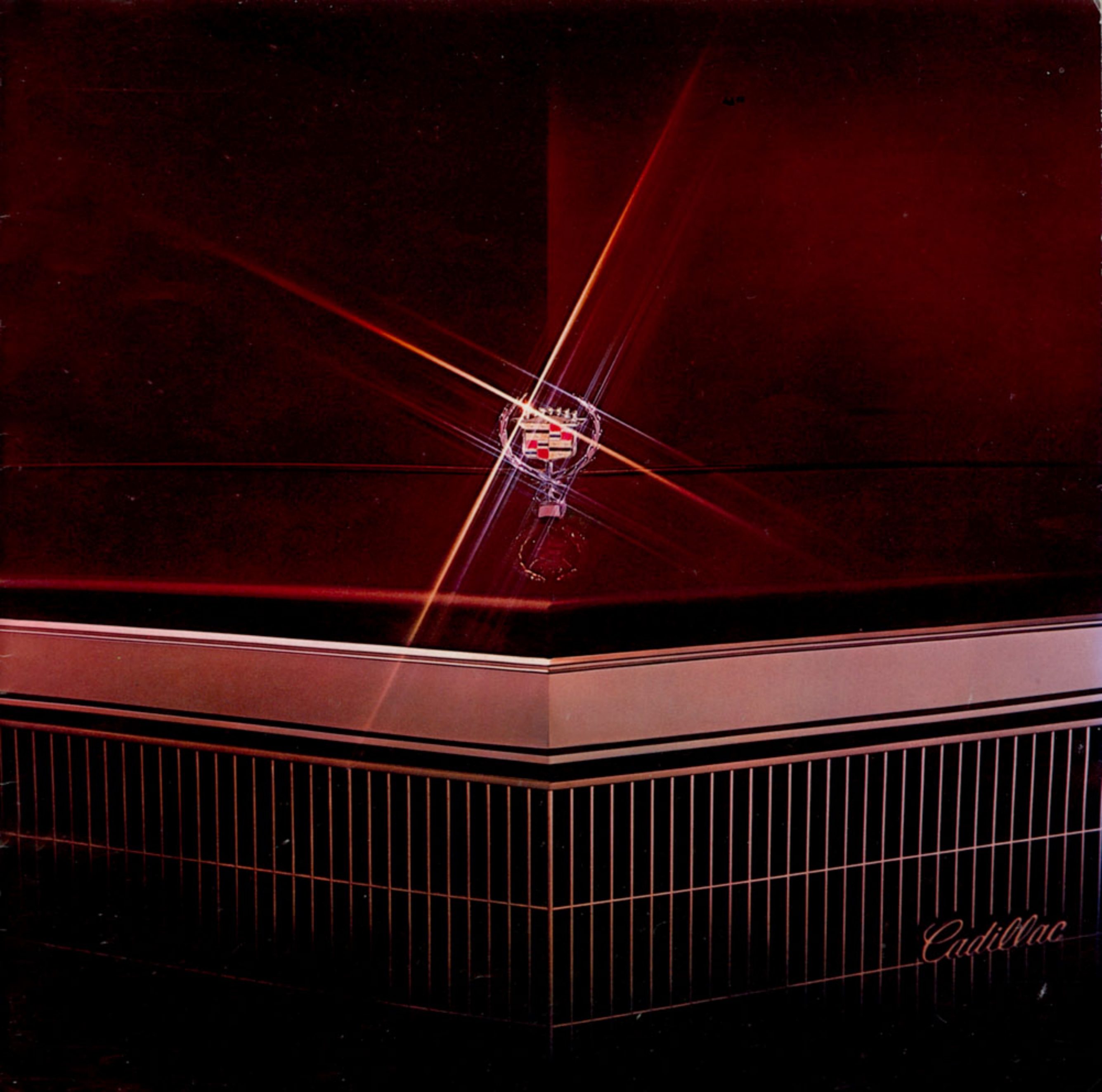
And today this heritage of
excellence is reflected in each
of the 1983 Cadillacs.

In a commitment to quality
you can see. In comfort you can feel.
In that superb Cadillac ride. In engineering
that traditionally leads the way.

In luxury without extravagance...in real value
...and in the good feeling that comes with knowing
you're surrounded by the substance of a Cadillac.

All this and...


Best of all...it's a Cadillac.



Cadillac




Coupe de Ville

One look...one demonstration drive will tell you it's destined to be America's favorite luxury car again. The ride—even smoother, quieter and more enjoyable. The engine—V8 power, whether you choose the remarkable HT 4100 Digital Fuel Injection System or the available Diesel V8. From its refined new grille to its distinctive tail lamps, it's Cadillac all the way. Coupe de Ville is shown in available Briar Firemist with matching Elk Grain  Cabriolet vinyl roof.



Sedan de Ville

It combines family-size roominess and four-door convenience with traditional Cadillac comfort and extraordinary value. And, the Sedan de Ville—as with all 1983 Cadillacs equipped with the HT 4100 power system—has more engine horsepower and torque than last year for better “off-the-line” performance. Plus extensive anti-corrosion measures. Sedan de Ville  is shown in Grayfern.



Fleetwood Brougham Coupe

Beauty and elegance abound in this two-door classic for 1983.

Almost any feature you might desire in a car is standard. From an illuminated entry system to a six-way power adjuster for the passenger seat. Styling accents that set the car apart are its Cabriolet roof treatment and the "privacy-size" quarter windows. As well as the familiar stand-up wreath and crest on the hood. Fleetwood Brougham Coupe is shown in available Flaxen Firemist with matching  Elk Grain Cabriolet vinyl roof.

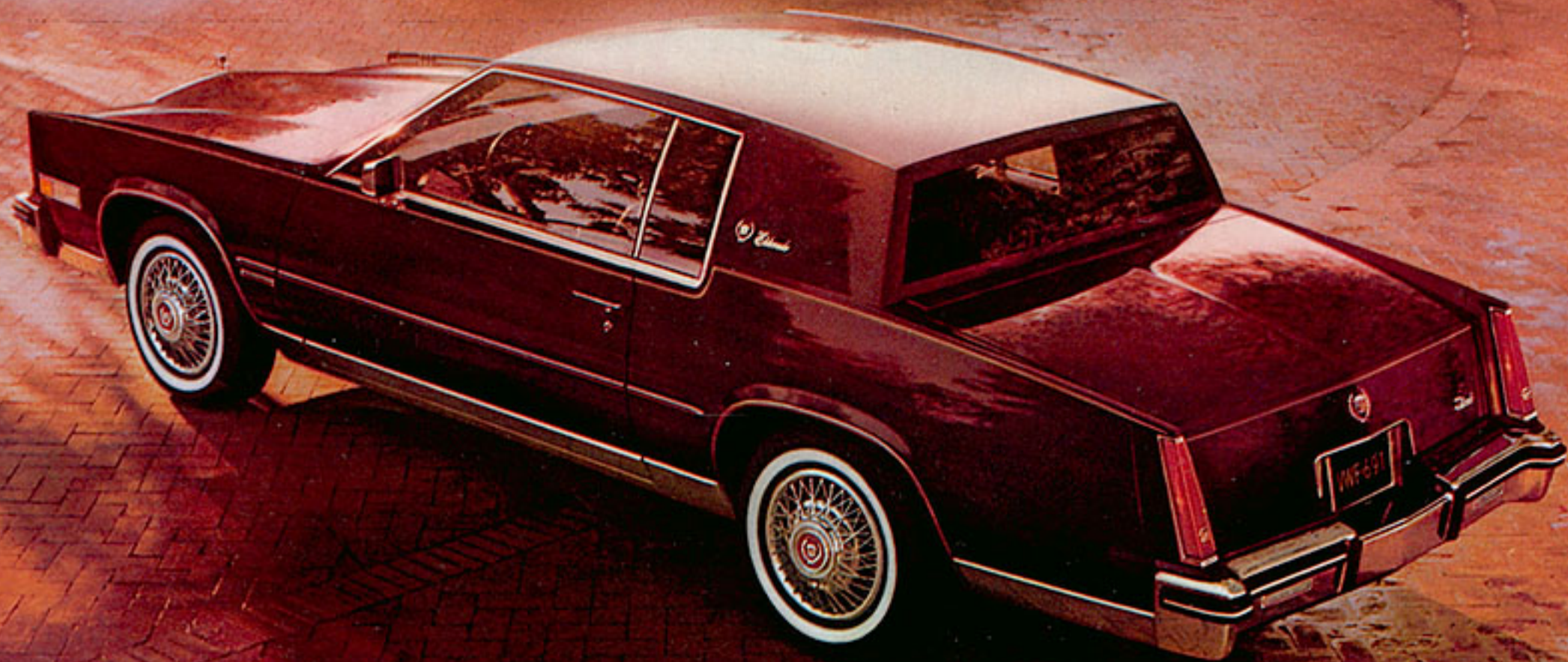


Fleetwood Brougham Sedan

Here indeed is one of the world's great sedans. The limousine-style rear window treatment complements the limousine-style ride. In every way this 1983 edition is in the proud Fleetwood tradition. Yet, it incorporates engineering sophistication that is among the most advanced on earth. Including on-board computer diagnostics that can simplify service. Fleetwood Brougham

Sedan is shown in available Midnight Blue Firemist with matching

Elk Grain  vinyl roof.



Eldorado

Here is the finest expression ever of the Eldorado idea...Eldorado 1983. It was 16 years ago that the idea was born--to combine the sportiness of a custom personal car with the comfort and engineering innovation of a great luxury car. Sportiness...comfort. Eldorado 1983 combines the two with a style and grace that can make you forget for the moment that this is also one of the world's best engineered cars. With front-wheel drive, four-wheel disc brakes, Digital Fuel Injection and more.

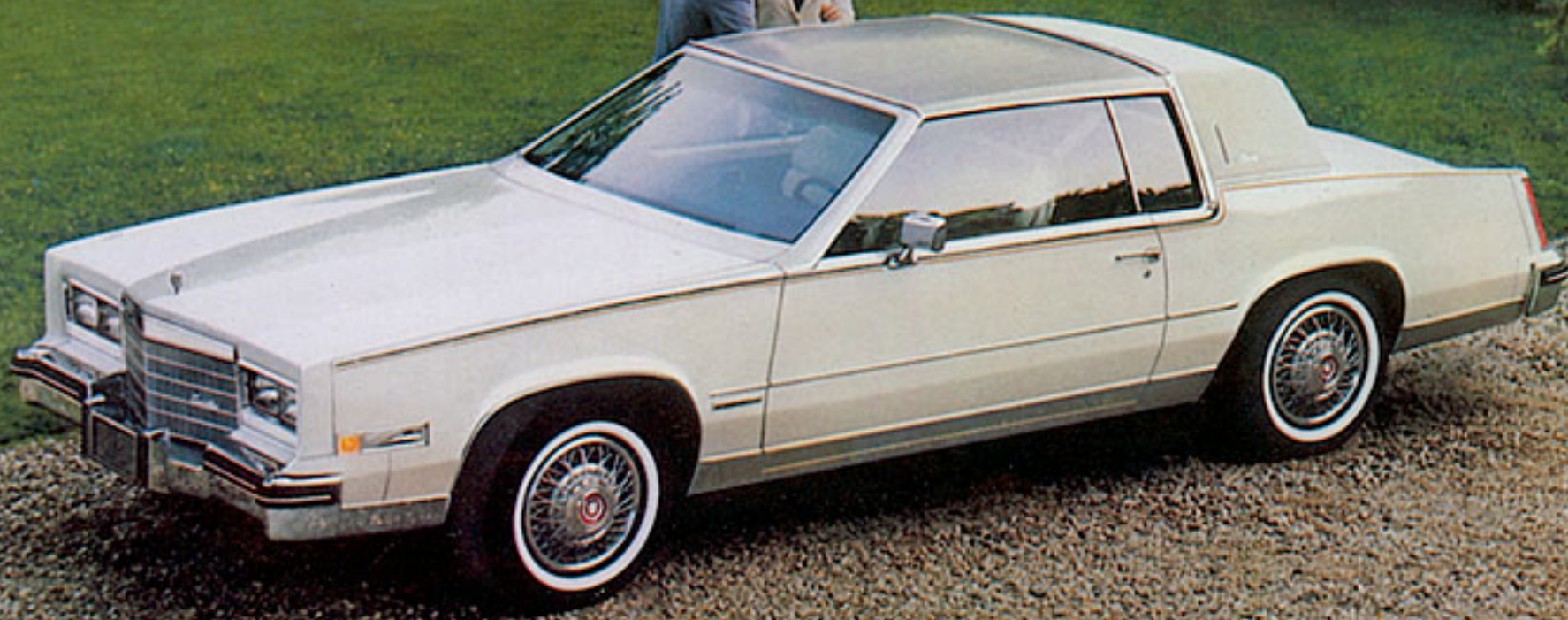


Eldorado is shown in Royal Maroon.



Eldorado Touring Coupe

It's a different breed of Cadillac... created for the person who loves to drive. Trim. Crisp. Clean. With the firm, "feel of the road" responsiveness of Cadillac's Touring Suspension combined with front-wheel drive. Plus large diameter stabilizer bars for added firmness in tight turns. Large P225/70R15 steel-belted radial tires in blackwall dress. (Tire chains should not be used with these tires. Their use may cause damage to your car.) And more. Topped off by the special cloisonné medallion on the hood. In 1983 the car is available in only two colors: Sonora Saddle Firemist and Sable Black, shown.



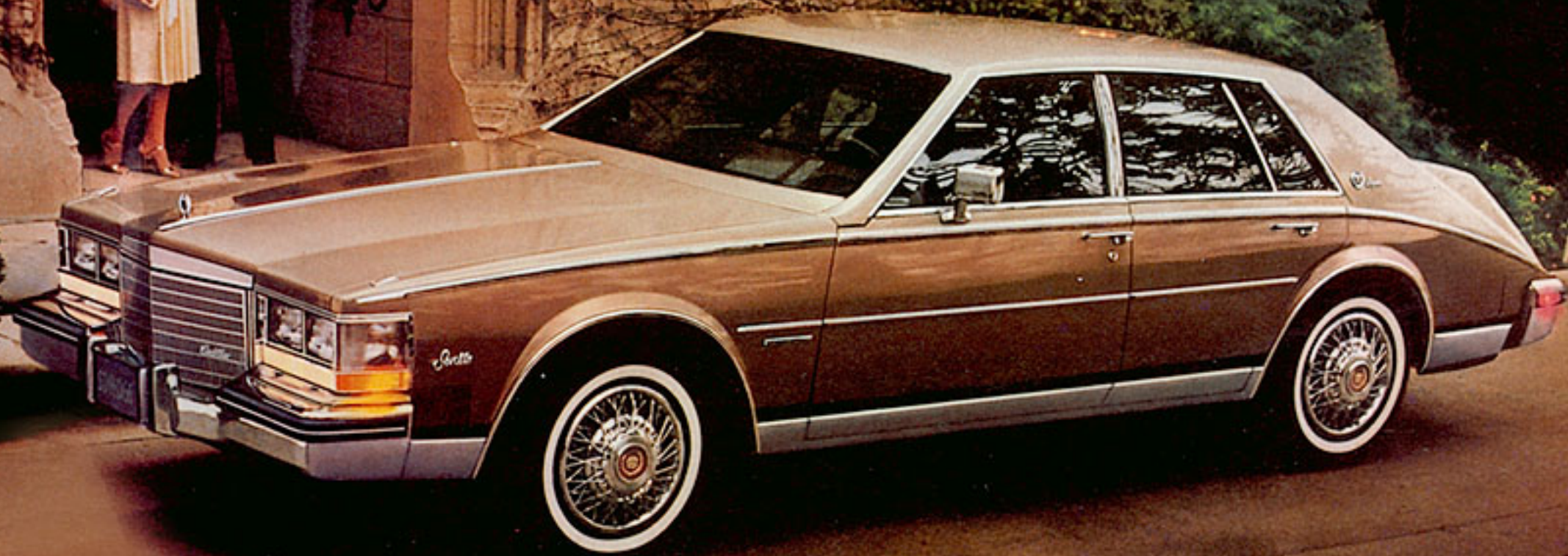
Eldorado Biarritz

This Eldorado "dream machine" for 1983 features a brushed stainless steel roof cap. As well as wire wheel covers, opera lamps and "Biarritz" script designation on the sail panels. Eldorado Biarritz is shown in Cotillion White with a matching Elk Grain Cabriolet vinyl roof.




Seville

It is without question Cadillac's finest...one of the world's great cars. A car for those who choose to go first class all the way. With styling that is imitated but never equalled, Seville is truly an American standard for the world. Elegant. Distinctive. Superbly crafted. With almost every luxury feature standard, from four-wheel independent suspension to electronic level control.  Seville is shown in Hatteras Blue.



Seville Elegante

The name says it. It's a very special, very elegant edition of Cadillac's finest. The tasteful two-tone color combination is accentuated by chrome side moldings that traverse the side of the car in a French curve design. "Elegante" script graces the side panels while accent striping complements the overall effect. Four color combinations are available. Shown is Briar  Firemist over Briar Brown.



*Eldorado
with Full
Cabriolet
Roof*

This dramatic treatment recaptures the dash and flair of the classic Eldorado convertibles. The simulated convertible roof design appears authentic in virtually every detail—from the canvas-look fabric to the roof bows, to the welted seams. It is available in four colors: Black, Dark Blue, Dark Briar Brown and White (shown with Balboa Blue exterior).





*Seville
with Full
Cabriolet
Roof*

Cadillac's finest takes on a special vitality and verve with a Full Cabriolet roof treatment. Sportiness. Charm. Call it what you will...it does make one of the world's most distinctive cars even more distinctive. This simulated convertible roof design is available in four colors. They are Black, Dark Blue, White and Dark Briar Brown (shown with Woodland Haze exterior).

The true beauty of genuine leather is available for ribbed seating areas...and nothing says quality more convincingly in the 1983 Coupe de Ville. Saddle leather is shown, one of ten colors available in 1983. Standard is rich Heather knit cloth with matching Dundee ribbed cloth inserts.

Coupe de Ville





Sedan de Ville

Tasteful luxury abounds within the 1983 Sedan de Ville... highlighted by the soft, velour-like texture of Heather knit cloth. It is accented by matching inserts of Dundee, an elegant ribbed material. Dark Blue is shown. Also offered for 1983 are Grayfern, Saddle, Dark Briar Brown and Dark Maroon.

The Fleetwood touch is evident everywhere. From the elegance of its appointments to the convenience of its 55/45 Dual Comfort front seats (seat three people). Here you see the richness of available Dark Maroon leather for seating areas. In all, eight colors of leather are offered in 1983.

Fleetwood Brougham Coupe





Fleetwood Brougham Sedan

It's an interior befitting one of the world's great sedans. As you enjoy its superb ride, you will relax in seating of exclusive Fleetwood Brougham design. Handsome Heather cloth in any of five colors is standard. Shown is available Grayfern leather for seating areas, one of eight colors offered.

The theme of sportiness and comfort is reflected inside the 1983 Eldorado. Its every driving convenience is at your fingertips. And you'll especially appreciate the legroom that results from the virtually flat floor because of front-wheel drive. The quality cues are everywhere—from deep-pile carpeting to a six-way power seat adjuster for the driver. And you have your choice of four colors of Heather cloth with Rocaille cloth inserts, or ten available leather trims, including Dark Blue, shown.





Eldorado Touring Coupe

Inside, the Eldorado TC is very special. With reclining Saddle leather-faced front bucket seats...with lumbar and lateral support. With a handy front seat console. And more. With an understated touch of class that doesn't depend on frills or fluff.



Eldorado Biarritz

Here the accent is on elegance. Tufted pillow-style seating and the steering wheel are tailored in rich Sierra Grain leather. Any of six interior colors are available, including Dark Briar Brown, shown. Other touches include adjustable rear seat reading lamps and plush Tampico carpeting.



You know...as soon as you open the door...this is Cadillac's finest. The classic and the contemporary are blended into an interior of undeniable beauty and comfort. Standard is Heather cloth with matching Rocaille cloth inserts in any of four colors, including Dark Maroon, shown. Or, if you prefer, you may select leather seating areas in any of nine colors.

Seville



Seville Elegante

This is a very elegant edition of first class. The choice of the choice. Standard are tucked leather seating areas with complementary leather-trimmed steering wheel. Sierra Grain leather is color-coordinated to match exterior colors in Saddle, Dark Brown or Sand Gray, shown. Other deluxe touches include Tampico carpeting, floor mats and leather-topped front compartment console.

Standard Features

for De Villes,
Fleetwood Broughams,
Eldorado and Seville.

HT 4100 DFI Power System.

Superb power system that combines Digital Fuel Injection and automatic overdrive with smooth V8 engine responsiveness. And only Cadillac has it. Please see Page 32.

Fuel Data Panel.

To help monitor your driving efficiency, the Fuel Data Panel displays your instantaneous mpg, average mpg, estimated driving range, even how much fuel you've used. Indicator lights signal the function being displayed.

With HT 4100 DFI only.

On-Board Computer Diagnostics with New Dual Service Lights.

New lights tell driver to "Service Now" or "Service Soon." Computer diagnostics help technician identify possible problem areas quickly.

Lamp Monitors.

Show driver if major and secondary outside lights are functioning.

Power Windows and Power Door Locks.

Automatic Power Antenna.

Raises automatically when ignition and radio are on. Retracts automatically when either radio or ignition is turned off.

Spacious Cadillac-Size Trunk.

Includes compact, inflated spare tire.

Two Remote Control Outside Mirrors.

Convex on right side for wide view.

Six-Way Power Seat Adjuster on Driver's Side.

Adjusts seat forward, back, up, down and tilts forward or back.

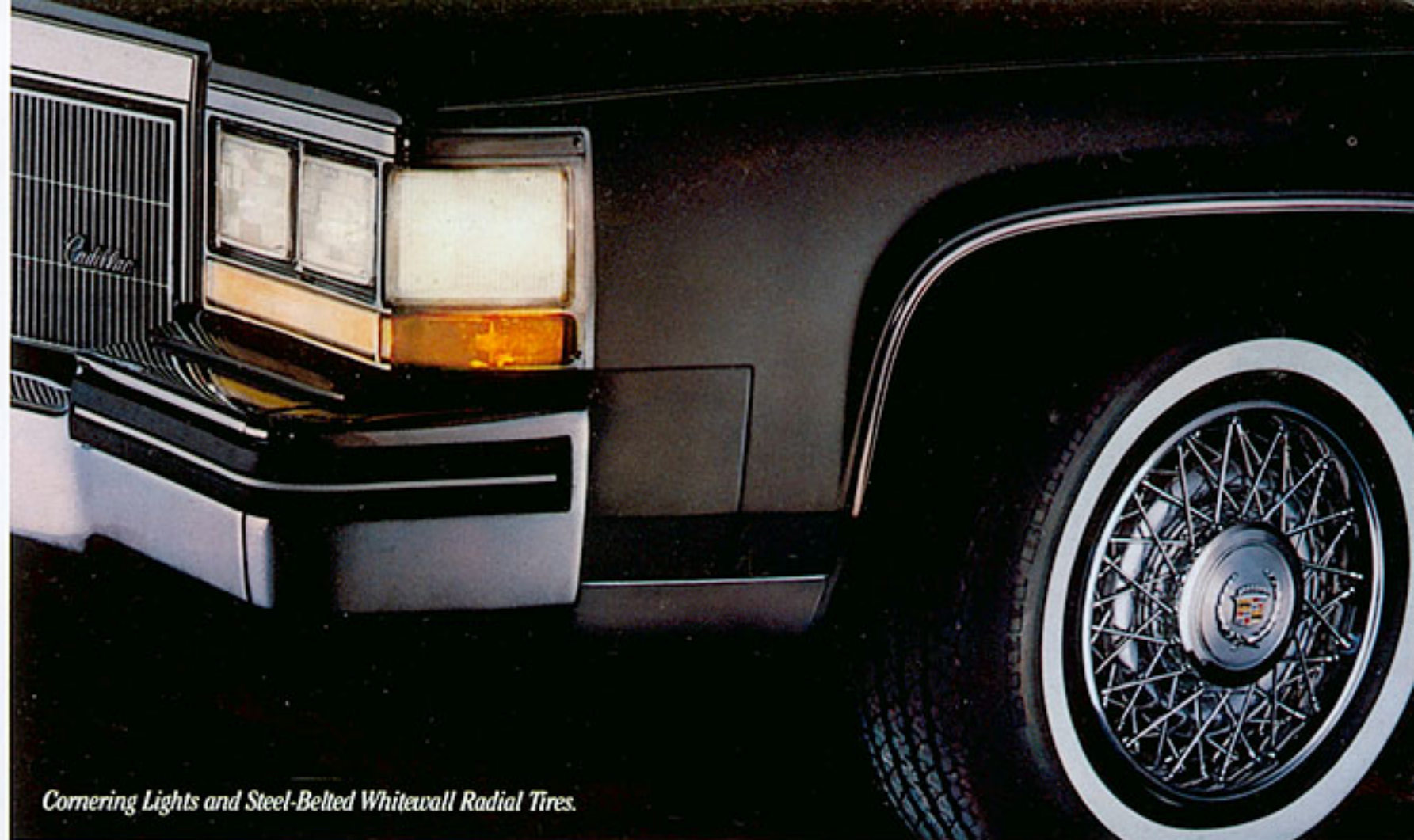
Underhood Light.

Mass-Backed Carpet.

With an acoustic sound absorber.

Electronically Tuned AM/FM Stereo Radio.

Includes signal seeking and scanning capabilities...digital display of time and radio frequencies...improved performance front speakers...and crystal-controlled frequency synthesizer for drift-free reception.



Cornering Lights and Steel-Belted Whitewall Radial Tires.



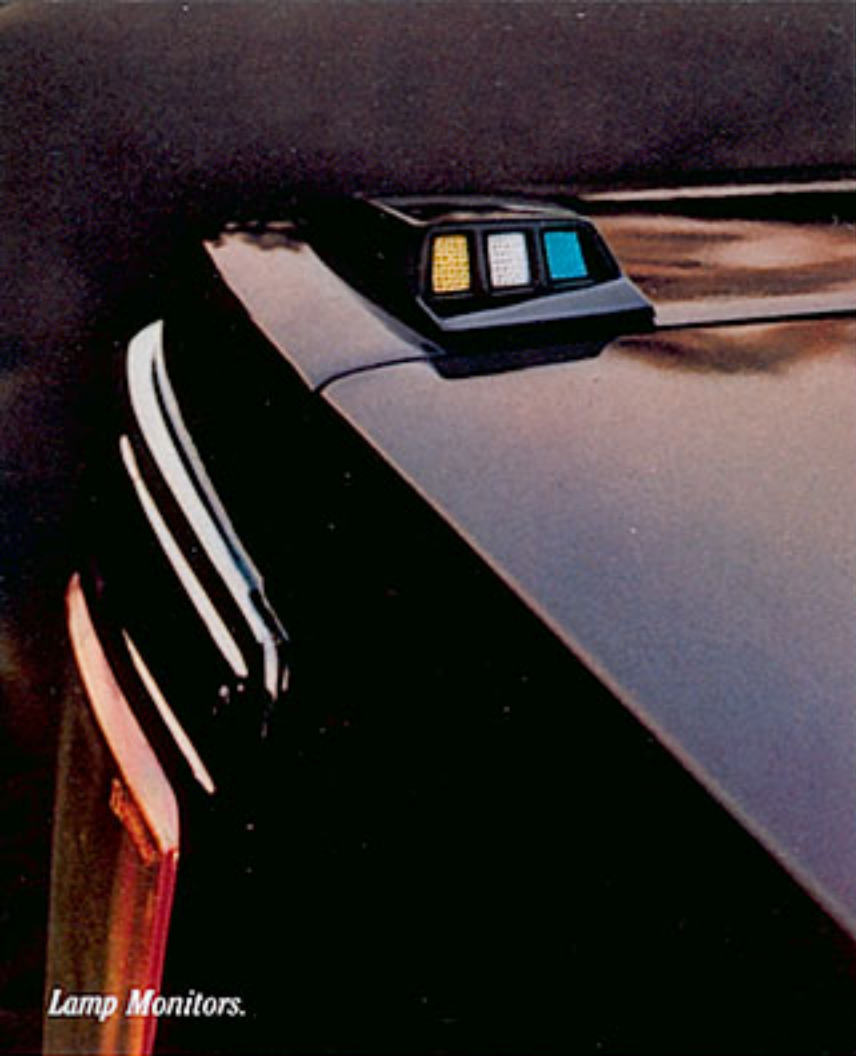
Cadillac-Size Trunk



On-Board Computer Diagnostics.



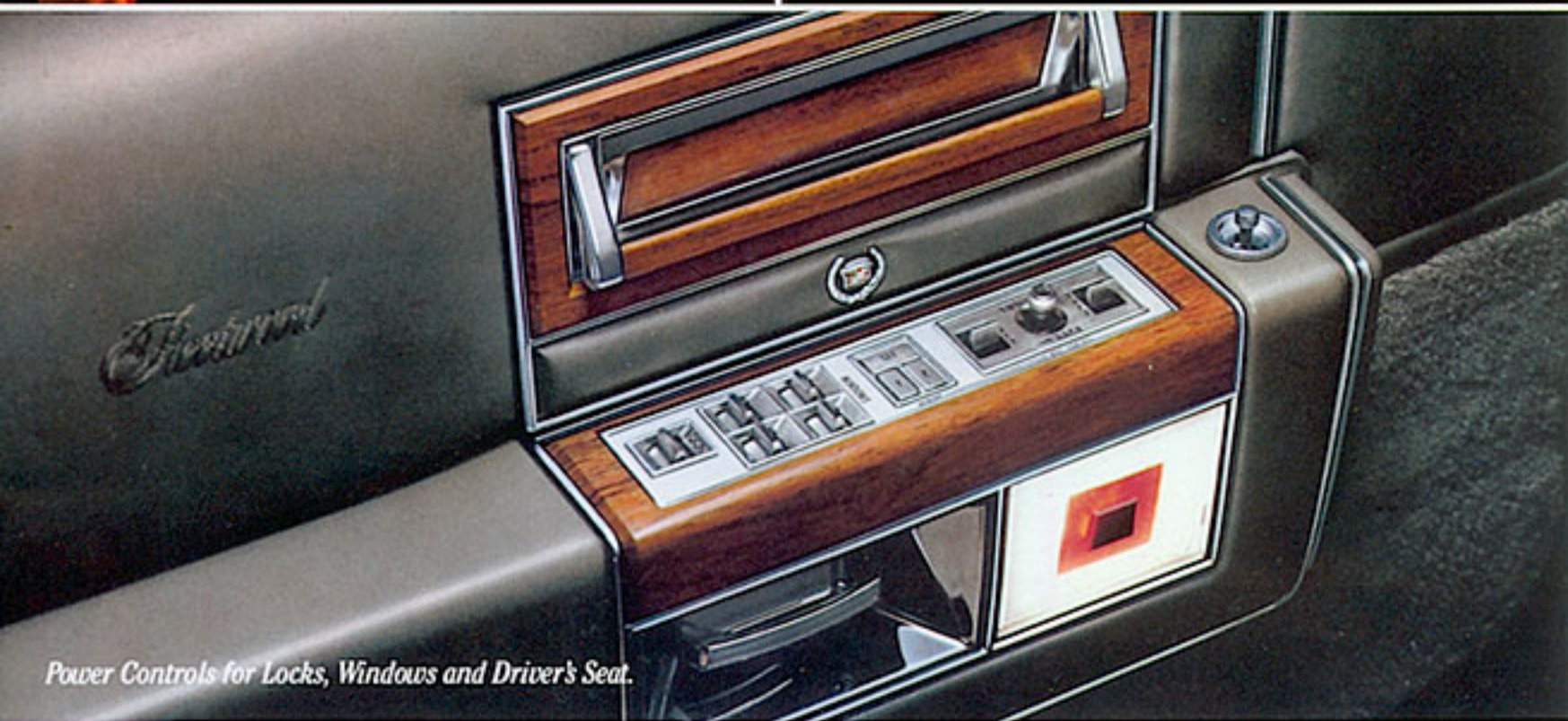
Fleetwood Brougham Standard Wheel Cover.



Lamp Monitors.



Outside Temperature Display.



Power Controls for Locks, Windows and Driver's Seat.



De Ville Standard Wheel Cover.



Eldorado and Seville Standard Wheel Cover.

Electronic Climate Control with Outside Temperature Display. Change interior temperature setting as precisely as one degree with a mere touch of a button. Push another button and this computer-controlled system tells you the temperature outside.

Reminder Chimes. Persuade driver to buckle up. Different tone patterns to turn off the lights... or take the key.

Power Steering. Easy parking and cornering.

Cornering Lights. With headlights on, they project light from front side of car when turn signal is on.

Front-Wheel Power Disc Brakes. Self-adjusting.

Functionally Coordinated Instrument Panel.

Tungsten Halogen Highbeam Headlamps. Provide increased illumination over conventional headlamps.

Three-Speed Wipers. "Mist" position for single-wipe action. De Villes only. Controlled Cycle Wipers on Fleetwood Broughams, Eldorado and Seville.

Fluidic Windshield Washer System. With oscillating spray action for thorough coverage.

Built-In Fuel Cap Holder on Fuel Filler Door. To help prevent cap loss.

Dual-Spot Map Lamps/Courtesy Lights. With storage space for available garage door opener control.

High Energy Ignition System. No points, ignition condenser, cam or rubbing block.

New Freedom® II Battery. Improved cold cranking performance. Never needs water.

Anti-Corrosion Measures. Over 100 specially treated areas.

Computer Command Control System. Standard on all gas-powered Cadillacs.

Front Seatback Map Pockets. Except Seville with cloth interior.

Front and Rear Center Armrests.

As well as: Push-to-Reset Trip Odometer • Soft Ray Tinted Glass • Full Wheel Covers • Inside Hood Release • Automatic Parking Brake Release • Color-Keyed Litter Container • Visor Vanity Mirror on Passenger Side • Cigar Lighters • 80 Amp Generator • Carpeted Trunk Compartment • Triple-Plated Bumpers • Cloth-Trimmed Rear Compartment Shelf • Low Fuel Indicator Light • Body Side Moldings (optional on Eldorado Touring Coupe).

Additional Standard Features

for Fleetwood Broughams,
Eldorado and Seville.

FLEETWOOD BROUGHAMS

Elk Grain Vinyl Roof. Cabriolet roof treatment on Coupe, full vinyl roof on Sedan.

Opera Lamps. Electro-luminescent type.

Illuminated Entry System. Pushing front door handle button illuminates keyhole and turns on inside courtesy lights.

Dual Comfort 55/45 Front Seats. Seat three people. Includes six-way driver and passenger power seat adjusters and manual passenger seatback recliner.

Controlled Cycle Wiper System. Delay feature allows adjustment of wiping action for light rain or other conditions.

Remote Trunk Lid Release and Power Pull-Down. With ignition on, a light touch of trunk lock release button inside glove box opens trunk. Also includes a quiet pull-down feature.

Adjustable Rear Seat Reading Lamps.
Accent Striping.

ELDORADO

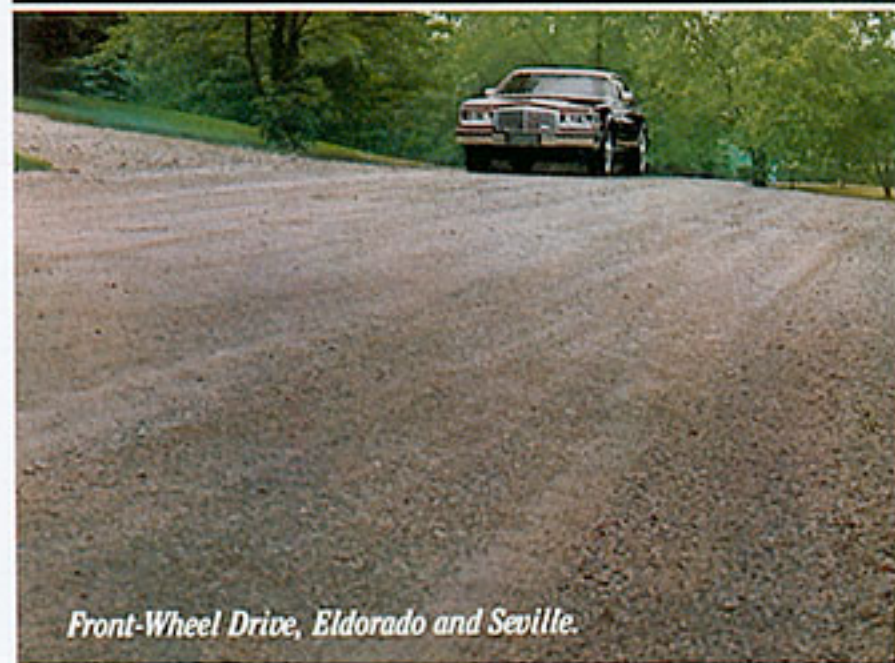
Front-Wheel Drive. Provides impressive traction in a wide variety of weather conditions because the engine's weight is over the wheels that drive the car. And since the floor is virtually flat, there's added roominess.

Four-Wheel Independent Suspension. Each wheel reacts independently to road variations for a smooth and confident Cadillac ride. The independent rear suspension also contributes to rear seat roominess and usable trunk space.

Four-Wheel Disc Brakes. Automatically self-adjust with every application, and provide rapid heat dissipation.



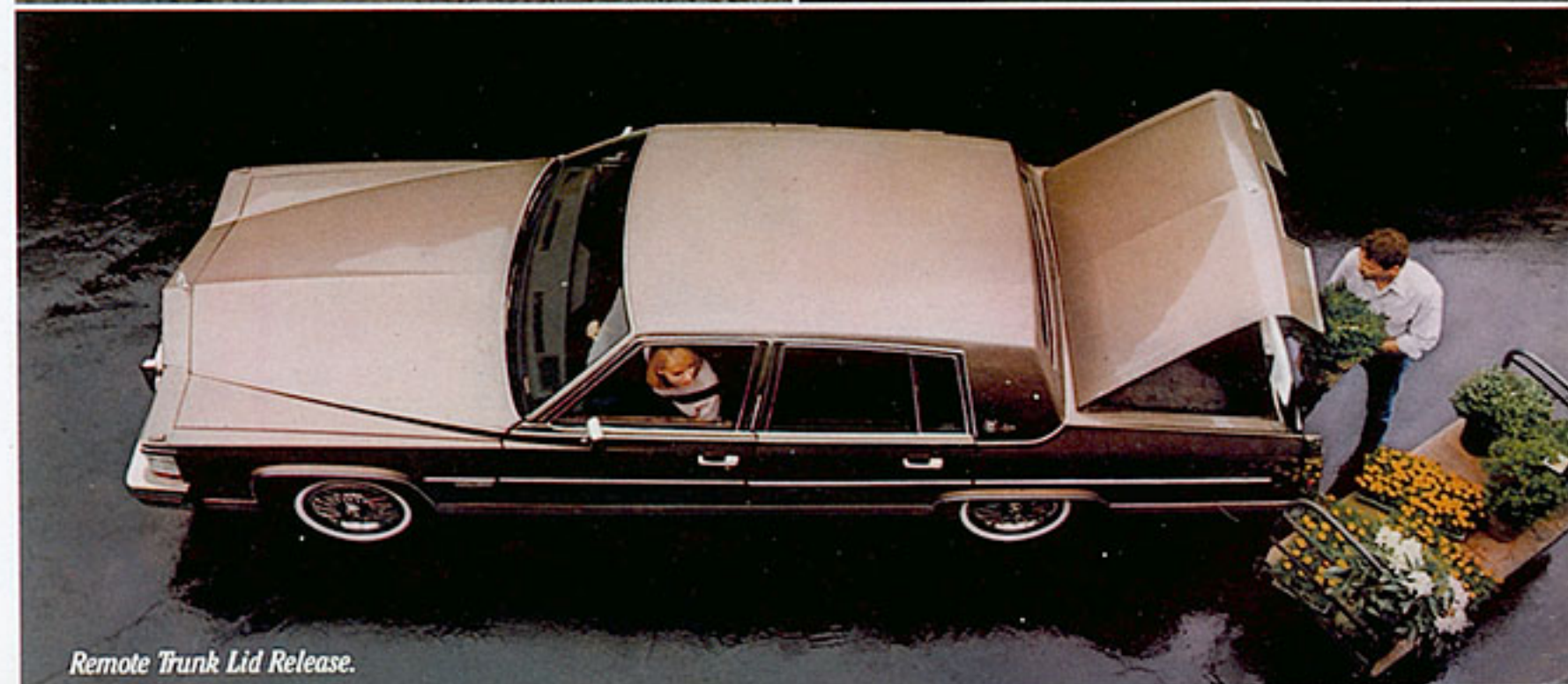
Six-Way Power Adjustment, Seville.



Front-Wheel Drive, Eldorado and Seville.



Four-Wheel Disc Brakes, Seville and Eldorado.



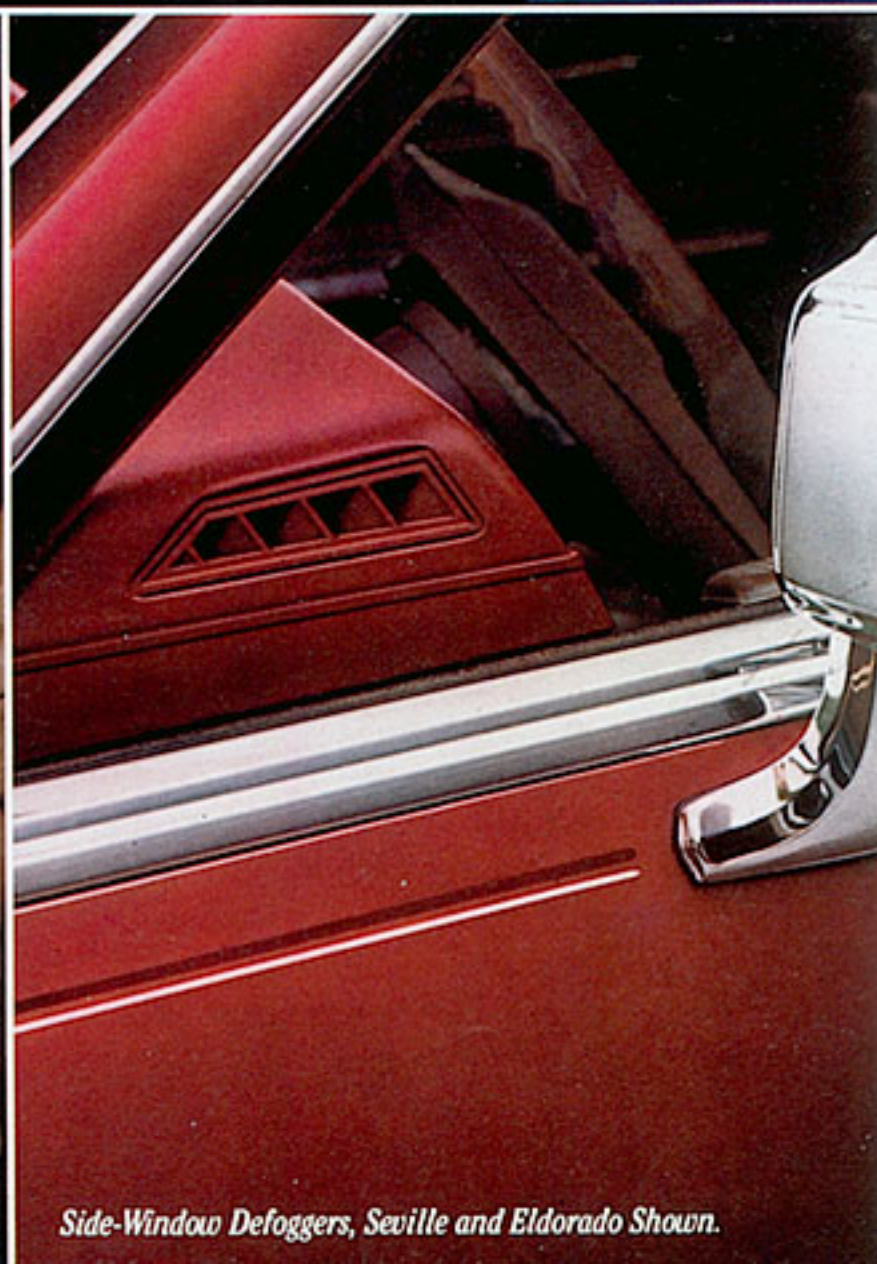
Remote Trunk Lid Release.



Illuminated Entry System, Fleetwood Broughams.



Rear Seat Reading Lamp.



Side-Window Defoggers, Seville and Eldorado Shown.

Electronic Level Control. This feature automatically adjusts to changing loads—for additional passengers or when luggage weight is added to the trunk—to help keep the car level.

Dual Comfort 45/50 Front Seats. Seat three people.

Remote Trunk Lid Release and Power Pull-Down.

Controlled Cycle Wiper System.

Side Window Defoggers. For added convenience.

Accent Striping.

SEVILLE

Front-Wheel Drive.

Four-Wheel Independent Suspension.

Four-Wheel Disc Brakes.

Electronic Level Control.

Dual Comfort 45/50 Front Seats.

Controlled Cycle Wiper System.

Side Window Defoggers.

Adjustable Rear Seat Reading Lamps.

Accent Striping.

Remote Trunk Lid Release and Power Pull-Down.

Accent Molding. Emphasizes Seville's distinctive profile.

Spare Tire Cover.

Overhead Assist Handles.

Rear License Plate Frame.

Features Available

for De Villes, Fleetwood Broughams, Eldorado and Seville.

5.7 Liter Fuel-Injected Diesel V8. Please see Page 34.

Memory Seat. This Cadillac feature remembers two preset driver's seat positions. Just push a button and the seat automatically assumes the position of your choice. Only with Dual Comfort front seats.

Remote Locking Fuel Filler Door. Locking or unlocking car doors also automatically locks or unlocks fuel filler door.

Theft-Deterrent System.

Digital Instrument Cluster. Digital readouts of vital functions in Metric or English units. Available for Eldorado and Seville.

Power Astrorooftop. Glass panel with adjustable sunshade. (Reduces headroom slightly.)

Tilt and Telescope Steering Wheel. Swings up for easy entry and exit. Also slides in and out.

Full Vinyl Roof. Available for Sedan de Ville, standard on Fleetwood Brougham Sedan.

Full Cabriolet Roof. Please see Page 10.

Cabriolet Vinyl Roof. Please see Page 26.

Rear Window Defogger with Heated Outside Mirrors.

Two-Tone Exteriors. Not available for Fleetwood Broughams, Eldorado Biarritz, Eldorado Touring Coupe.

Illuminated Entry System. Standard on Fleetwood Broughams.

General Motors Continuous Protection Plan. Additional service protection beyond that provided by GM's new vehicle limited warranty. Only in U.S. and Canada. See your Cadillac dealer for details.

Illuminated Vanity Mirrors. For passenger and driver.

Dual Comfort Front Seats. Seat three people. Available with De Villes. Standard with Fleetwood Broughams, Eldorado and Seville. Include passenger power seat adjuster on Fleetwood Broughams.

Power Recliner Driver Seat. For Dual Comfort seats only.

Power Recliner Passenger Seat. Available for Dual Comfort seats and for De Ville's notchback-type seats only. Standard with Seville Elegante. Not available with Eldorado Touring Coupe.

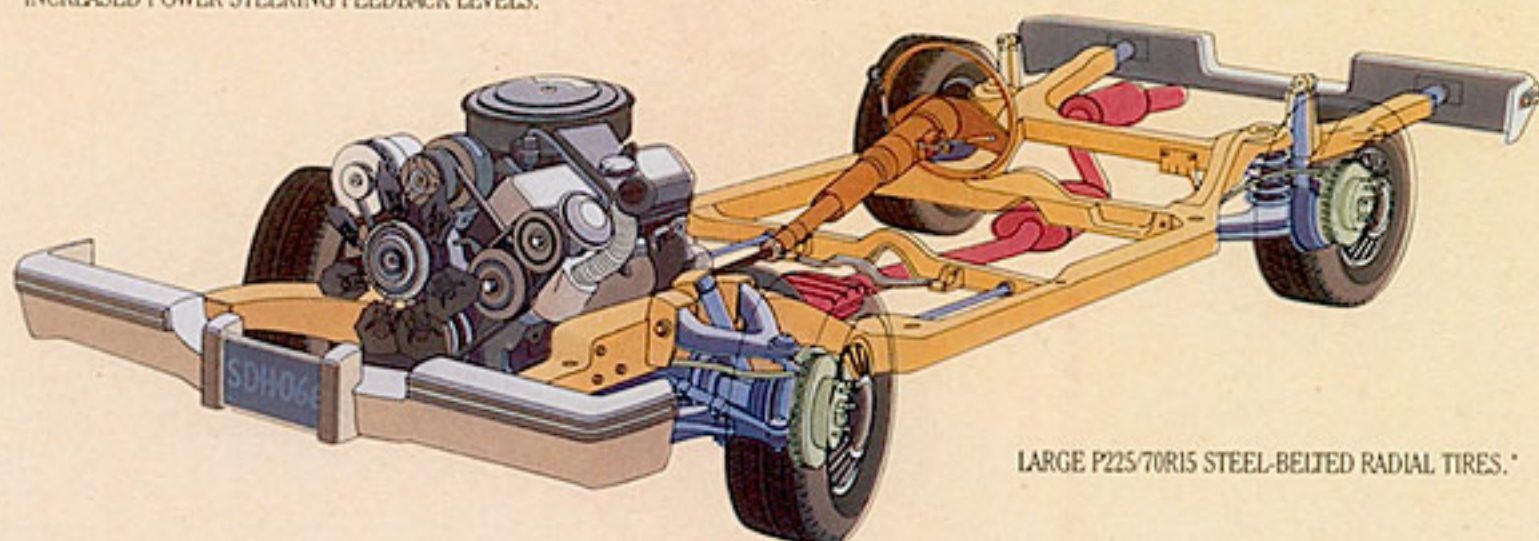
6-Way Power Passenger Seat Adjuster. Standard on Fleetwood Broughams, De Ville d'Elegance and Seville Elegante.

Twilight Sentinel. Automatically turns headlights on and off in response to outside lighting conditions.



STIFFER FRONT TORSION BAR AND REAR SPRING RATES.

INCREASED POWER STEERING FEEDBACK LEVELS.



LARGE P225/70R15 STEEL-BELTED RADIAL TIRES.*

LARGE DIAMETER STABILIZER BARS—FRONT AND REAR.

Touring Suspension, Seville and Eldorado Shown.



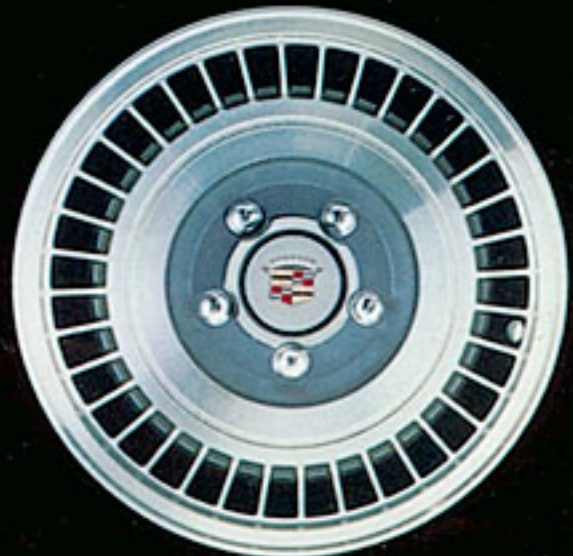
Genuine Wire Wheels.



Wire Wheel Covers.



Turbine-Vaned Wheel Covers.



Aluminum Alloy Wheels, Seville Shown.

Touring Suspension. Gives firm feel of the road with impressive cornering ability and steering precision. Available for Seville and Eldorado. Standard for Eldorado TC (See Page 7.) Includes large P225/70R15 steel-belted radial tires. (Tire chains should not be used with these tires. Their use may cause damage to your car.)

Heavy-Duty Ride Package. For additional firmness on rough roads. Fleetwood Broughams and De Villes only.

Opera Lamps. Standard on Fleetwood Broughams, Eldorado Biarritz. Not available for Seville, Eldorado Touring Coupe.

Wire Wheels. De Villes and Fleetwood Broughams only.

Wire Wheel Covers. Standard on Eldorado Biarritz, Seville Elegante. Not available on Eldorado TC.

Aluminum Alloy Wheels. Available for Eldorado and Seville. Standard on Eldorado TC.

Turbine-Vaned Wheel Covers. Available for De Ville only.

Puncture Sealing Tires. Prevent most tread punctures from causing flat tires. Not available with Touring Suspension.

Raised White Letter Tires. Eldorado Touring Coupe only.*

Electronic Cruise Control.

Guidematic Headlamp Control. Automatically dims lights with approach of oncoming cars, then returns lights to high beam.

Controlled Cycle Wiper System. Standard on Fleetwood Broughams, Eldorado and Seville.

Remote Trunk Lid Release and Power Pull-Down. Standard on Fleetwood Broughams, Eldorado and Seville.

Interiors with Leather in Seating Areas. Standard on Eldorado Touring Coupe, Eldorado Biarritz and Seville Elegante.

Accent Striping. Standard on Fleetwood Broughams, Eldorado and Seville.

Electronic Level Control. Standard on Eldorado and Seville.

RADIOS (Please also see Page 36.)

Delco-GM/Bose Symphony Sound System. Acoustically matched to the car, with four specially designed speaker enclosure assemblies and integral cassette player. Available on Eldorado and Seville. Please see Page 37 for more details.

Combination Cassette Player and Built-In Citizens Band Radio. With automatic reverse.

AM/FM Stereo with Integral Tape Player. Either cassette or 8-track.

Tri-Band AM/FM/CB Power Antenna. Standard with CB transceivers.

As well as: Firemist Paints • Automatic Door Locks • Door Edge Guards • Three-Channel Garage Door Opener • Trumpet Horn (Not Available for Seville) • Front and/or Rear License Frames • 100 Amp Generator • Federal, California or High Altitude Emission Systems • Trunk Mat • Carpeted Floor Mats • Leather-Trimmed Steering Wheel • Electrically Controlled Mirrors.

*Caution: Tire chains should not be used with these tires. Their use may cause damage to your car.

Special Editions

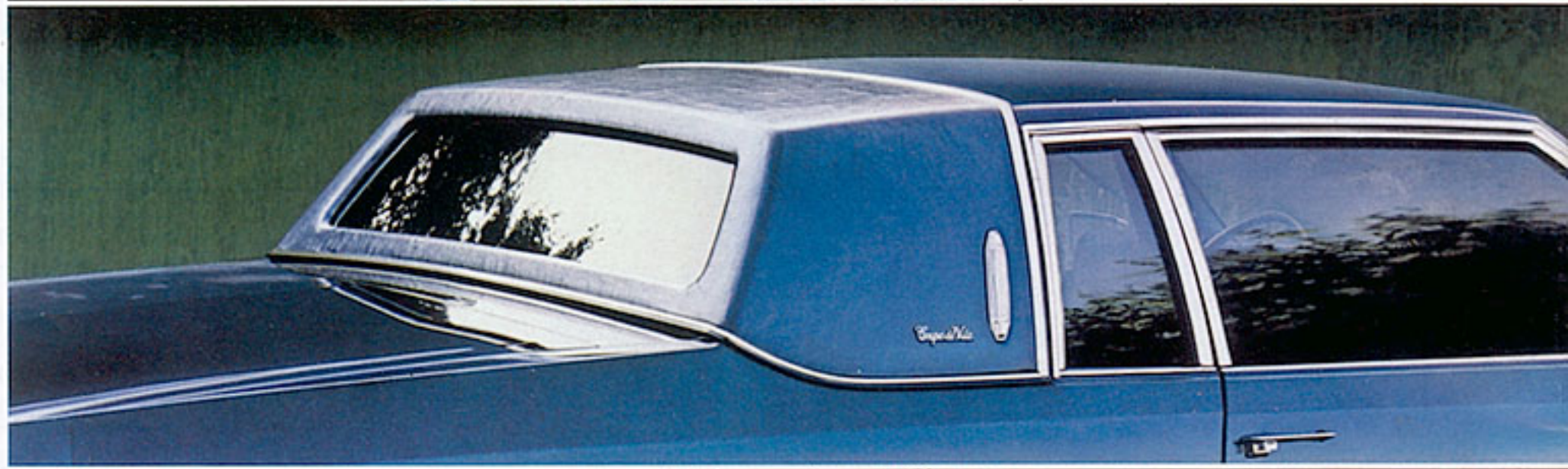
De Ville d'Elegance.

Here is the ultimate in De Ville luxury ... for Coupe or Sedan. It features pillow-style seating in distinctive Venetian velour. This opulent material is available in Dark Briar Brown, Saddle and Dark Blue, shown. Other features: 50/50 Dual Comfort front seating (seats three) ... six-way power passenger seat adjuster ... deluxe carpeting and mats ... special trim ... accent striping and opera lamps.



Cabriolet.

This handsome roof treatment of Elk Grain vinyl, matching the car's exterior color, is standard on the Fleetwood Brougham Coupe. It features a gleaming crossover roof molding. A similar treatment is available for Coupe de Ville.



Fleetwood Brougham d'Elegance.

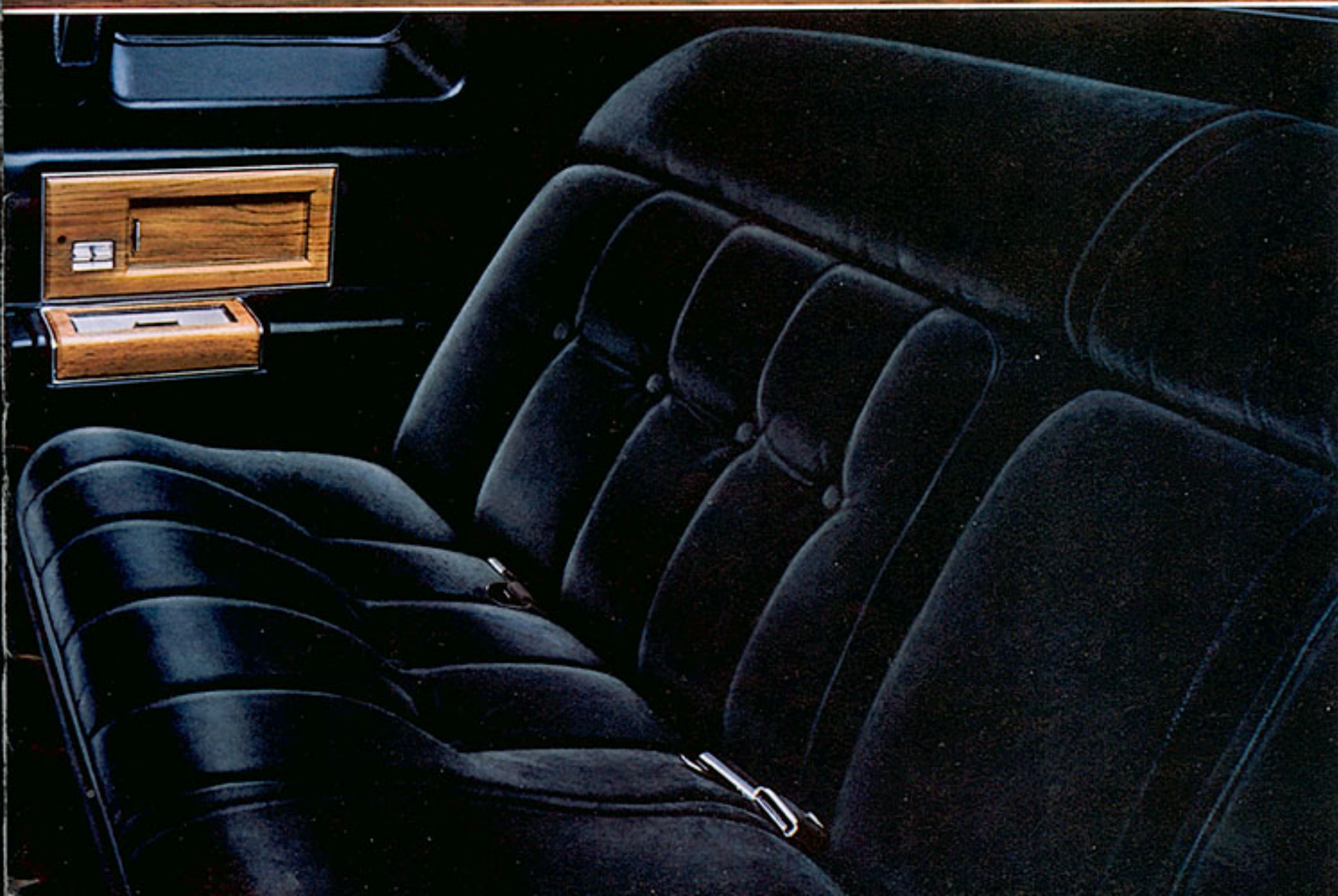
The luxury of choice is yours in the 1983 Fleetwood Brougham d'Elegance. Choose Coupe or Sedan ... any of four colors in Heather cloth or any of six colors of leather for seating areas. Shown is Dark Briar Brown. Whatever your choice, you'll enjoy tufted seating of pure elegance. Plus 50/50 Dual Comfort front seating (seats three). As well as special trim design, deluxe carpeting and floor mats, and special wheel covers that incorporate matching body color.





Fleetwood Limousines

These magnificent vehicles are the flagships of the fleet... the Fleetwood Limousine with seating for eight and the Fleetwood Formal Limousine with seating for seven (a sliding glass partition separates front and rear compartments). Each has two fold-down auxiliary seats for additional passengers. Rear seat passengers have their own control panel to adjust temperature, power windows and more. Inside this private world is seating of Heather cloth in either Dark Blue or Black (shown). The front compartment of the Formal Limousine is always Black, with Black leather in seating areas. Shown is the Fleetwood Limousine in Sable Black.



What makes a Cadillac a Cadillac?

It can be summed up in a single word: excellence.
For over 80 years the Cadillac name has stood for excellence in its
many forms. Innovative engineering. Solid comfort.
Quality that endures. The Cadillac name has become a synonym
for integrity. And, in doing so,
the Cadillac wreath and crest has become
a symbol of excellence the world over.





In 1983, the pursuit of excellence continues. You can see it in the subtle refinements of the Cadillac grille. Hear it in the clean, full sound of Cadillac's radios. Feel it in the smooth, quiet Cadillac ride. Telltale traces of the quest for perfection are in evidence throughout the 1983 Cadillacs.

Freedom from inconvenience. Cadillac owners know. When you purchase a Cadillac, you get a lot more than just a car . . . you get the Cadillac service network. More than 1500 Cadillac dealerships coast to coast, dedicated to the fast, accurate and courteous handling of your needs. Whether you bought your Cadillac at that dealership or not. When you bring your car into a Cadillac dealership, you get experienced workmanship from the service technicians. Specialists who know their Cadillacs inside and out. You get the correct parts for your Cadillac. And, you get the Cadillac commitment to excellence all along the line.

That unmistakable style. One look, and you know it's a Cadillac. The strong, clean lines. The bold cross-hatch grille. The richly appointed interiors. The classic script insignia. There's never any doubt about what a Cadillac is . . . or what it represents.



That undeniable ride. One ride, and you know it's a Cadillac. It's everything you expect it to be: smooth as silk, even, controlled. Somewhere between the tires and you, bumps disappear and holes get filled. Specially designed acoustical insulation surrounds and isolates the passenger compartment from road and engine noise.

Roominess and comfort. While a Cadillac is very much a pleasure to drive, it is also a pleasure to ride in. Six-footers will find ample leg and headroom in a Cadillac. And a Cadillac trunk can hold as much as seven pieces of luggage. (See Page 20.)

The luxury of choice. Only one U.S. luxury car make offers you smooth V8 power in fuel-injected gasoline or available Diesel power. Only one offers you a selection of two available suspensions, four available radios and a minimum of 22 available exterior paint combinations. Only Cadillac.



Quality that endures. The 1983 Cadillacs have extensive anti-corrosion protection. Over 100 areas are specially treated. The bodies are constructed with extensive use of anti-corrosive metals. Paint is applied in an electron-charged dip that bonds paint and metal together with a magnetic-like adhesion. Doors and deck lid flanges are sealed with Plastisol. Critical metal-to-metal contact points are protected with gaskets and bi-metal moldings. Even the bumpers are specially plated with three types of metal (copper, nickel and chrome) to protect against corrosion.

The pride of ownership. It comes from knowing you made the right choice. That the luxury car you drive is one of the

most advanced automobiles on the road. And one of the most respected. That is why Cadillac has traditionally been a leader in repeat ownership. And owner loyalty is one reason why Cadillac has been America's favorite luxury car for 35 consecutive years.



Those Cadillac Touches.

But what really makes a Cadillac a Cadillac are those extra touches. Those little things that can mean so much.

Center armrests both front and rear. Especially appreciated on a long drive.

An Electronic Climate Control that adjusts to a single degree. Cadillac's standard heating and cooling system has one of the largest capacities of any car in the world. Fast and efficient, it is adjustable in increments as small as one degree.



It also features an exclusive outside temperature display, with a push of a button.

Tastefully elegant courtesy lights that cast a warm, welcome glow when you open the door . . . go off when you close the door.

A parking brake you'll never leave engaged. You don't have to worry about this parking brake. It automatically disengages when you start the car and shift into reverse or drive.

Handsome door handles and assist straps. Little things . . . but they don't go unnoticed in a Cadillac.

A generous supply of lighters. Wherever you sit in a Cadillac, there's one nearby.



Front seatback map pockets. You'll use them for almost everything. Even maps.

Inside hood release. You determine when the hood goes up. Another touch: an underhood light.

Color-keyed litter container. For your convenience.

Soft Ray tinted glass. To cut the glare and heat without blocking the view.



A digital clock. Accurate and reliable. Even with the key turned off you can tell the time by simply pushing the volume control knob.

A smartly carpeted trunk area . . . to give this important compartment a clean, tailored appearance.

And one of the nicest touches of all . . . In a Cadillac, pleasant sounding chimes and tones courteously remind you to buckle up . . . turn off the lights . . . or take the key. No annoying buzzers here.



The HT 4100 Power System

It could well be the most sophisticated drivetrain on any car in production today. HT 4100 incorporates everything from a 4-speed overdrive transmission to fast-burn combustion technology. Plus, it has 10 more horsepower and 10 foot-pounds more torque than last year, for improved performance.

The balance, power of 90° V8 design. One of the benefits inherent in a 90° V8 design is the natural balance of opposing forces, which is enhanced through the selection of carefully matched engine components. The result: smooth, even, consistent power.

Tested on the line. Proven on the road. Every HT 4100 engine is subjected to a complete "hot test" before it goes into a Cadillac. Then, after assembly, it must pass an 86-step computer "stress test," an idle test and a dynamometer test before it is okayed for shipment. This, together with miles of owner experience helps assure you of *proven performance*.

The smooth idle and starting ease of Digital Fuel Injection. This advanced form of electronic fuel injection combines a sophisticated computer and state-of-the-art technology. A series of eight sensors constantly monitor engine and ambient conditions such as coolant temperature, engine rpm, engine load, vehicle speed and barometric pressure. This information is relayed back to the microprocessor, which adjusts fuel flow, spark advance and idle speed accordingly. The result: fast starting and consistent response across a wide range of conditions.





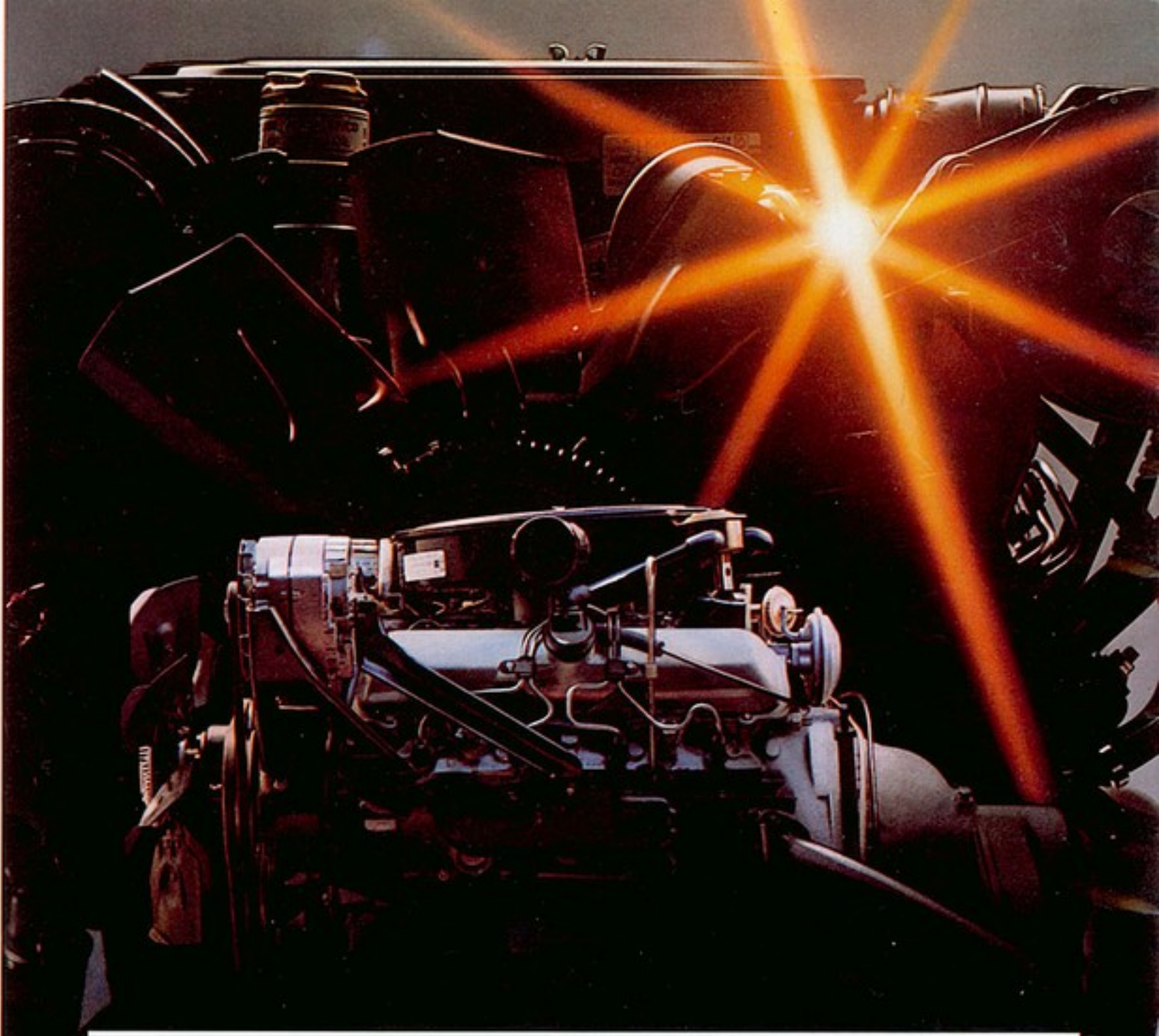
Tells you when it needs service. The microprocessor monitors engine performance against predetermined limits, sensing when something is not operating properly. If it's a noncritical function that needs attention, the computer will automatically turn on the "Service Soon" light. If the problem could affect engine performance or an emission system, the "Service Now" light will appear, indicating the Cadillac should be brought in for service as soon as possible.

Tells your technician what needs servicing. At the Cadillac dealership, the microprocessor will then direct the technician to the problem area through a coded display in the Electronic Climate Control panel. Simply by pressing two buttons, and referring to the code book, your Cadillac service technician can locate the source of difficulty. Then, after performing the necessary tests and corrective actions, he can double-check his work with the microprocessor, which will display an "all-clear" signal showing that the problem is resolved. The microprocessor is so advanced, it even remembers difficult-to-pinpoint intermittent problems.

Automatic Overdrive reduces engine speed, noise. Cadillacs are equipped with a four-gear automatic overdrive transmission as standard equipment. Overdrive reduces engine rpm $\frac{1}{2}$ at highway speeds, which in turn lessens engine noise in the passenger compartment and reduces fuel used.

"Fuel Used" readout helps you choose the most efficient route. Suppose you have the choice between driving on an expressway to work, or a more direct route on city streets. Which is more efficient? The HT 4100 Fuel Data Panel will tell you. Simply set the system before you take the expressway for work. When you arrive, press the "fuel used" and "average" mpg buttons, record the numbers and reset the system. Then take the more direct route going home, comparing the fuel used and average mpg figures against the earlier numbers. You may discover that while your average mpg was higher on the expressway, you used less fuel driving the direct city route.

The Diesel Powered Cadillacs



Of all the car makes in the world, only one offers the choice between a fuel-injected gasoline V8 engine and the available diesel-powered V8. Only Cadillac. And it's available on all De Villes, Fleetwood Broughams, Eldorados and Sevilles. Complete with dual batteries, glow plugs, engine block heater and fuel line heater, the Diesel V8 for Cadillac is designed for fast cold weather starting. And, like the HT 4100, it features a four-speed automatic overdrive transmission for reduced engine rpm at highway speeds.

Engine Availability for 1983 Cadillacs

ENGINE	ORDER CODE	AVAILABILITY
4.1 Liter V8 HT 4100 DFI (A)	I78	Standard for Fleetwood Broughams, De Villes, Eldorado and Seville.
5.7 Liter Fuel-Injected Diesel V8 (B)	LF9	Available for Fleetwood Broughams, De Villes, Eldorado and Seville.
6.0 Liter V8-6-4 Digital Fuel Injection (C)	L62	Standard for Limousines.

(A) & (C) Produced by GM-Cadillac Motor Car Division

(B) Produced by GM-Oldsmobile Division

A WORD ABOUT ENGINES: Some Cadillacs are equipped with engines produced by other GM divisions, subsidiaries or affiliated companies worldwide. See your dealer for details.



Safety Features

Occupant Protection

- Manual lap/shoulder belts with push-button buckles for driver and right front passenger (driver side includes visual and audible warning system). Manual lap belt at center position, when applicable.
- Manual lap belts with push-button buckles at rear passenger positions including center.
- Energy-absorbing steering column.
- Passenger guard inside door locks.
- High strength safety door latches and hinges.
- Inertia-type folding front seatback latches.
- Energy-absorbing instrument panel and front seatback tops.
- Laminated safety glass windshield tempered safety glass side and rear windows.
- Safety armrests.
- Standardized identification symbols for controls and displays.
- Adjustable front seat head restraints for driver and right front passenger.
- Glove box door latch and, when applicable, console cover latch impact security.
- Smooth contoured door and window regulator handles.
- Pressure lock radiator cap.

Accident Avoidance

- Side marker lights and reflectors.
- Parking lamps that illuminate with headlamps.
- Four-way hazard warning flasher.
- Backup lights.
- Lane change feature in direction signal control.
- Windshield defrosters, washer and three-speed wipers.
- Vinyl-bonded inside mirror glass.
- Outside left and right rearview mirrors.
- Dual master cylinder brake system with warning light.
- Starter safety switch.
- Dual-action safety hood latch.
- Low glare finish on instrument panel top, inside windshield moldings, wiper arms and blades and steering wheel metallic surfaces.
- Safety road wheel rims.
- Front disc brakes with audible wear indicators.
- Self-adjusting brakes.
- Illumination of heater and defroster controls on instrument panel.
- Illumination of windshield wiper and washer controls.
- Pressure relief fuel cap.

Anti-Theft

- Audible anti-theft ignition key reminder.
- Anti-theft steering column lock.
- Inside hood release.
- Anti-theft key system (one key for ignition only, second key for doors, trunk and glove compartment).
- Visible vehicle identification number.

Available Anti-Theft Feature

- Theft-Deterrent System.

"Let's Get It Together...Buckle Up"

Choice in Radios

Electronically Tuned AM/FM Stereo Radio (ETR).

It features electronic tuning, digital display of time or radio frequency, signal seeking and scanning capabilities, bass and treble slide controls, front/rear fader control and a crystal-controlled frequency synthesizer for drift-free reception. New cloth edges on front speakers provide a softer suspension for brighter high-end sound, fuller low- to mid-range sound.

ETR AM/FM Stereo Radio with 8-Track Tape Player.

Incorporates all the features listed above, plus extended frequency range rear speakers with 4-ohm power capacity and an integral 8-track player.

ETR AM/FM Stereo Radio with Cassette Player and Built-In Citizens Band Radio.

Incorporates all the features of the base radio, plus a cassette player with auto reverse, a 40-channel CB with Tri-Band antenna and 4-ohm extended range rear speakers. Includes squelch and monitor controls.

Symphony Sound System.

All the features of the base radio, plus an integral cassette player, DNR (Dynamic Noise Reduction), full-time loudness control, sound equalization, and 4-ohm extended range rear speakers. DNR serves to reduce "hiss" on cassette tapes, AM and FM. Unlike Dolby, DNR is compatible with all prerecorded tape. The loudness control automatically boosts bass levels at low volume, giving a fuller, richer sound. And sound equalization automatically adjusts the audio output to provide more "true to life" sound reproduction in the car's special environment.



Electronically Tuned AM/FM Stereo Radio (ETR).



ETR AM/FM Stereo Radio with 8-Track Tape Player



ETR AM/FM Stereo Radio with Cassette Player and Built-In Citizens Band Radio.



Symphony Sound System.

New for Eldorado and Seville



Delco-GM/BOSE Symphony Sound System

An automotive sound system that's far superior to most home units.

This is our ultimate car stereo. A system customized to the exact interior dimensions and acoustic characteristics of the car. A system that combines one of Delco-GM's most sophisticated electronically tuned receivers with Bose Corporation's patented Direct/Reflected sound reproduction design.

The Delco-GM/BOSE system features four separate amplifiers and speakers, each in their own special enclosure. These units distribute sound waves in a carefully calculated pattern that utilizes reflections off the windows and interior to create a sound so realistic, it doesn't seem to come from the speakers at all. The Delco-GM/BOSE system is so advanced, it acoustically balances left-to-right sound levels for all passengers *simultaneously*, eliminating the need for a balance control.

Features in the Delco-GM/BOSE sound design include:

Integral Cassette Player.

Dynamic Noise Reduction (DNR). Reduces high-frequency "hiss."

Dolby Noise Reduction.™ Reduces "hiss" on Dolby-encoded tapes.

Tape Equalization. Adapts for Chromium Dioxide, Metal, and Ferric Oxide tapes.

Automatic Reception Adjustment. Compensates to assure maximum sensitivity to weak signals.

Full-time loudness control. Boosts bass at low volume levels, to compensate for decreased ear sensitivity.

Treble and bass controls. Let you compensate for recordings where bass and treble have been boosted to counteract deficiencies in low-quality sound systems.

Digital Display. Bright L.E.D. readout of time or radio frequency.

Signal Seeking and Scanning. Scan button automatically samples all clear radio signals for five seconds each. Seek button changes stations electronically.

Auto Reverse. Automatically switches to reverse side of cassette when one side is completed.

Helical Voice Coil Speakers. Heavy ceramic magnet and low impedance design for high power capacity, clear sound across the audio frequency range.

Patented "digital mode" amplifiers. So compact, they can be installed inside the speaker enclosure. 25 watts each for a total of 100 watts.

Specifications

1983 DE VILLES, FLEETWOOD BROUGHAMS AND LIMOUSINES

Engines

HT 400 V8 with Digital Fuel Injection (DFI) Standard on DeVilles & Fleetwood Broughams.

Displacement 4.1 liters
Diesel with Fuel Injection Available on DeVilles & Fleetwood Broughams.

Displacement 5.7 liters
V8-6-4 Fuel Injection Standard on Limousines.

Displacement 6.0 liters

Fuel Tank

Capacities
DeVilles & Fleetwood Broughams with HT 400 Power System 30 liters (24.5 gallons approx.)

DeVilles & Fleetwood Broughams with available Diesel 38 liters (28 gallons approx.)

Limousines 33 liters (24.5 gallons approx.)

Electrical

Freedom® II Battery-Delco Remy 12-volt, negative ground, side terminals. No filler/vent caps.

With Diesel: Two Delco-Remy Freedom® II Batteries. 80 amp Generator

Transmissions

DeVilles & Fleetwood Broughams with HT 400 Power System or available Diesel Four-speed automatic with overdrive and clutched torque converter

Limousines with V8-6-4 Three-speed automatic

Rear Axle Differential

DeVilles & Fleetwood Broughams with HT 400 Power System 3.42:1

DeVilles & Fleetwood Broughams with available Diesel 2.93:1

Limousines 3.08:1

Front Suspension

Independent Coil Springs Coil
Stabilizer Bar Link Type

Shock Absorbers Hydraulic, Direct Action

Rear Suspension

Four-link Springs Coil
Shock Absorbers Hydraulic, Direct Action

Height Control Electronic Level Control (Std. on Limousine, available on DeVilles and Fleetwood Broughams).

Brakes

Power disc-drum self-adjusting Master Cylinder Dual hydraulic

Power Boosters Tandem vacuum Hydraulic for Diesel

Front Vented rotors
Caliper Single piston sliding

Front disc:
Fleetwood Broughams and DeVilles 304.8 x 25.4 mm (12" x 1")

Fleetwood Limousines 304.8 x 31.75 mm (12" x 1 1/4")

Rear Duo servo drums

Drums-DeVilles and Fleetwood Broughams 279.4 x 50.8 mm (11" x 2")

Composite cast iron/steel
Limousines 304.8 x 63.5 mm (12" x 2 1/2")

Composite cast iron/steel

Parking Brake Foot pedal with vacuum release.
Action Mechanical on rear brakes.

Wiltale Light Indicates hydraulic malfunction or parking brake applied. Also indicates low vacuum on HT 400.

Linings Audible wearing indicators (on disc brakes).

Steering

Power Gear Ratio
DeVilles, Fleetwood Broughams 15-13.1

Limousines 11.3:1

Overall Ratios
DeVilles, Fleetwood Broughams 11-15:1

Limousines 20.0-20.6:1

Wheel & Column Tilt and Telescope (Std. on Fleetwood Broughams and Formal Limousine, available on DeVilles and Fleetwood Limousine.)

Wheels & Tires

Tires GM Specification Steel-Belted Radial

Sidewall Wide white stripe

Size-DeVilles & Fleetwood Broughams P205/75R15

Limousines R9R-15-D
Wheels-Except Limousines 5 x 6 JJ

Limousines B x 6 JJ Heavy-duty

Overall Sizes

Tread Width 1546 mm Front (61.2")
1542 mm Rear (60.7")

Turning Diameter

DeVilles & Fleetwood Broughams 11.4 M (44.1")

Limousines 15.4 M (61.1")

Wheelbase

DeVilles 3085 mm (121.5")

Fleetwood Broughams 3085 mm (121.5")

Limousines 3079 mm (121.5")

Overall Length

DeVilles 5014 mm (211.8")

Fleetwood Broughams 5014 mm (211.8")

Limousines 4296 mm (169.1")

Overall Height

Coupe de Ville 1387 mm (54.6")

Sedan de Ville 1403 mm (55.6")

Fleetwood Brougham Coupe 1387 mm (54.6")

Fleetwood Brougham Sedan 1441 mm (56.7")

Fleetwood Limousine 1445 mm (56.9")

Formal Limousine 1445 mm (56.9")

Body Width

Coupe de Ville 894 mm (35.2")

Sedan de Ville 892 mm (35.1")

Fleetwood Brougham Coupe 894 mm (35.2")

Fleetwood Brougham Sedan 892 mm (35.1")

Fleetwood Limousine 892 mm (35.1")

Formal Limousine 892 mm (35.1")

Curb Weight (with standard engine)

Coupe de Ville 1794.3 kg (3955 lbs.)

Sedan de Ville 1858.2 kg (4098 lbs.)

Fleetwood Brougham Coupe 1858.1 kg (4098 lbs.)

Fleetwood Brougham Sedan 2027.6 kg (4469 lbs.)

Fleetwood Limousine 2003.4 kg (4425 lbs.)

Formal Limousine 2200.3 kg (4852 lbs.)

Headroom Front

Coupe de Ville 967 mm (38.0")

Sedan de Ville 968 mm (38.0")

Fleetwood Brougham Coupe 967 mm (38.0")

Fleetwood Brougham Sedan 968 mm (38.0")

Fleetwood Limousine 990 mm (39.0")

Formal Limousine 968 mm (38.0")

Headroom Rear

Coupe de Ville 968 mm (38.0")

Sedan de Ville 967 mm (38.0")

Fleetwood Brougham Coupe 968 mm (38.0")

Fleetwood Brougham Sedan 967 mm (38.0")

Fleetwood Limousine 986 mm (38.8")

Formal Limousine 986 mm (38.8")

Legroom Front

DeVilles, Fleetwood Broughams and Fleetwood Limousine 1067 mm (42.0")

Legroom Rear

Coupe de Ville 1060 mm (41.7")

Sedan de Ville 1075 mm (42.3")

Fleetwood Brougham Coupe 1032 mm (40.6")

Fleetwood Brougham Sedan 1047 mm (41.2")

Fleetwood Limousine 1026 mm (40.3")

Formal Limousine 1026 mm (40.3")

Hip Room Front

Coupe de Ville 945 mm (37.2")

Sedan de Ville 945 mm (37.2")

Fleetwood Brougham Coupe 945 mm (37.2")

Fleetwood Brougham Sedan 945 mm (37.2")

Fleetwood Limousine 945 mm (37.2")

Formal Limousine 946 mm (37.4")

Hip Room Rear

Coupe de Ville 1003 mm (39.5")

Sedan de Ville 1003 mm (39.5")

Fleetwood Brougham Coupe 1003 mm (39.5")

Fleetwood Brougham Sedan 1003 mm (39.5")

Fleetwood Limousine 1059 mm (41.7")

Formal Limousine 1059 mm (41.7")

Shoulder Room Front

DeVilles, Fleetwood Broughams and Limousines 1508 mm (59.4")

Shoulder Room Rear

Coupe de Ville 1488 mm (58.6")

Sedan de Ville 1508 mm (59.4")

Fleetwood Brougham Coupe 1488 mm (58.6")

Fleetwood Brougham Sedan 1508 mm (59.4")

Fleetwood Limousine 1485 mm (58.5")

Formal Limousine 1485 mm (58.5")

ELDORADO

Engines

HT 400 V8 with DFI Standard
Displacement 4.1 liters

Diesel with Fuel Injection Available
Displacement 5.7 liters

Fuel Tank

Capacities
With HT 400 Power System 77 liters (20.3 gallons approx.)

With available Diesel 84 liters (22.8 gallons approx.)

Electrical

Freedom® II Battery-Delco Remy 12-volt, negative ground, side terminals. No filler/vent caps.

With Diesel: Two Delco-Remy Freedom® II Batteries. 80 amp Generator

Transmission

Four-speed automatic with overdrive and clutched torque converter

Final Drive Ratios

With HT 400 Power System 3.15:1

With available Diesel 2.93:1

Front Suspension

Independent Torsion Bar Springs Torsion Bar

Stabilizer Bar Link Type

Shock Absorbers Hydraulic, Direct Action

Rear Suspension Independent trailing arm Springs Coil

Shock Absorbers Hydraulic, Direct Action

Height Control Electronic Level Control

Brakes Power disc—self-adjusting Master Cylinder Dual hydraulic

Power Booster Tandem vacuum Hydraulic for Diesel

Front & Rear Single piston sliding calipers, vented rotors.

Parking Brake Foot pedal with vacuum release.
Action Mechanical on rear brakes.

Wiltale Light Indicates hydraulic malfunction or parking brake applied. Also indicates low vacuum on HT 400.

Linings Audible wear indicators

Steering

Power Gear Ratio 14:1

Overall Ratio 14:1

Wheels & Tires

Tires GM Specification Steel-Belted Radial

Sidewall Wide white stripe

Size P205/75R15

Wheels 5 x 6 JJ

Overall Sizes

Tread Width 1506 mm Front (59.3")
1540 mm Rear (60.6")

Turning Diameter 12.9 M (51.2")

Wheelbase 2895 mm (114.0")

Overall Length 5095 mm (200.6")

Body Width 1779 mm (70.0")

Curb Weight (with standard engine) 1790.1 kg (3948 lbs.)

Headroom Front 962 mm (37.8")

Headroom Rear 962 mm (37.8")

Legroom Front 1088 mm (42.8")

Legroom Rear 992 mm (39.1")

Hip Room Front 1141 mm (45.0")

Hip Room Rear 1125 mm (44.3")

Shoulder Room Front 1425 mm (56.3")

Shoulder Room Rear 1374 mm (54.1")

SEVILLE

Engines

HT 400 V8 with DFI Standard

Displacement 4.1 liters

Diesel with Fuel Injection Available

Displacement 5.7 liters

Fuel Tank

Capacities
With HT 400 Power System 77 liters (20.3 gallons approx.)

With Diesel 84 liters (22.8 gallons approx.)

Electrical

Freedom® II Battery-Delco Remy 12-volt, negative ground, side terminals. No filler/vent caps.

With Diesel: Two Delco-Remy Freedom® II Batteries. 80 amp Generator

Transmission

Four-speed automatic with overdrive and clutched torque converter

Final Drive Ratios

With HT 400 Power System 3.15:1

With available Diesel 2.93:1

Front Suspension

Independent Torsion Bar Springs Torsion Bar

Stabilizer Bar Link Type

Shock Absorbers Hydraulic, Direct Action

Rear Suspension Independent trailing arm Springs Coil

Shock Absorbers Hydraulic, Direct Action

Height Control Electronic Level Control

Brakes Power disc—self-adjusting Master Cylinder Dual hydraulic

Power Booster Tandem vacuum Hydraulic for Diesel

Front & Rear Single piston sliding calipers, vented rotors.

Parking Brake Foot pedal with vacuum release.
Action Mechanical on rear brakes.

Wiltale Light Indicates hydraulic malfunction or parking brake applied. Also indicates low vacuum on HT 400.

Linings Audible wear indicators

Steering

Power Gear Ratio 15-13.1

Overall Ratio 15-13.1

Wheels & Tires

Tires GM Specification Steel-Belted Radial

Sidewall Wide white stripe

Size P205/75R15

Wheels 5 x 6 JJ

Overall Sizes

Tread Width 1506 mm Front (59.3")
1540 mm Rear (60.6")

Turning Diameter 12.9 M (51.2")

Wheelbase 2895 mm (114.0")

Overall Length 5201 mm (204.8")

Overall Height 1379 mm (54.3")

Body Width 1681 mm (66.2")

Curb Weight (with standard engine) 1743.6 kg (3844 lbs.)

Headroom Front 968 mm (38.1")

Headroom Rear 947 mm (37.3")

Legroom Front 1088 mm (42.8")

Legroom Rear 1002 mm (39.4")

Hip Room Front 1106 mm (43.5")

Hip Room Rear 1025 mm (40.3")

Shoulder Room Front 1404 mm (55.2")

Shoulder Room Rear 1412 mm (55.6")

ALL GASOLINE-POWERED MODELS

Unleaded Fuel Use only unleaded gasoline meeting Federal government regulations. The Federal government specifies the minimum octane number of unleaded gasoline. Unleaded gasoline must be used for proper emission control system operation. It will also minimize spark plug fouling. The use of leaded gasoline can damage the emission control system, and could result in loss of warranty coverage.

ALL MODELS ON PAGE

A WORD ABOUT ASSEMBLY, COMPONENTS AND OPTIONAL EQUIPMENT IN THESE CADILLAC PRODUCTS.

The Cadillacs described in this brochure are assembled at facilities of General Motors Corporation operated by Cadillac Division or GM Assembly Division. These vehicles incorporate thousands of different components produced by various divisions of General Motors and by various suppliers to General Motors. From time to time during the manufacturing process, it may be necessary, in order to meet public demand for particular vehicles or equipment, or to meet federally mandated emissions, safety and fuel economy requirements, or for other reasons, to produce Cadillac products with different components or differently sourced components than initially scheduled. All such components have been approved for use in Cadillac products and will provide the quality performance associated with the Cadillac name.

With respect to extra cost optional equipment, make certain you specify the type of equipment you desire on your vehicle when ordering it from your dealer. *Some options may be unavailable when your car is built. Your dealer receives advice regarding current availability of options. You may ask the dealer for this information. GM also requests the dealer to advise you if an option you ordered is unavailable. We suggest that you verify that your car includes the optional equipment you ordered or if there are changes, that they are acceptable to you.*



The Cadillac Commitment



We believe that when you buy or lease a Cadillac,
you deserve to be treated like a Cadillac owner.
And when you take your car in for service,
you have the right to expect the type of consideration
traditionally reserved for Cadillac owners.
We intend to keep that tradition alive.