



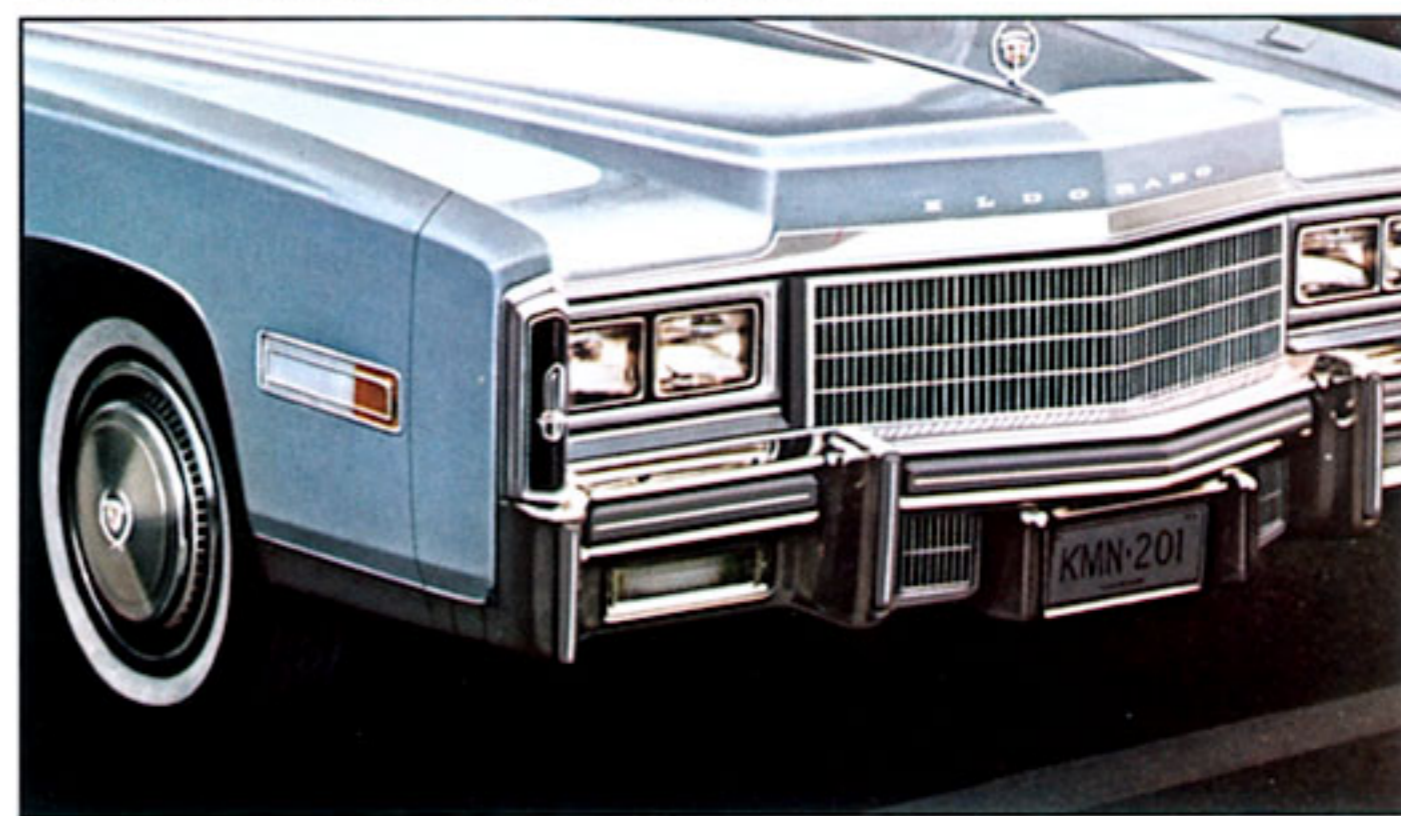
Eldorado by Cadillac. Whichever Eldorado you choose... classic Coupe, the available Cabriolet (shown in available Frost Orange Firemist with White vinyl roof) or the available Custom Biarritz... you'll enjoy that rare blend of excitement and elegance that's made Eldorado a legend in its time. With the performance of front-wheel drive, four-wheel disc brakes, Variable Ratio Power Steering and Automatic Level Control. With the luxury of front seat roominess. All standard.



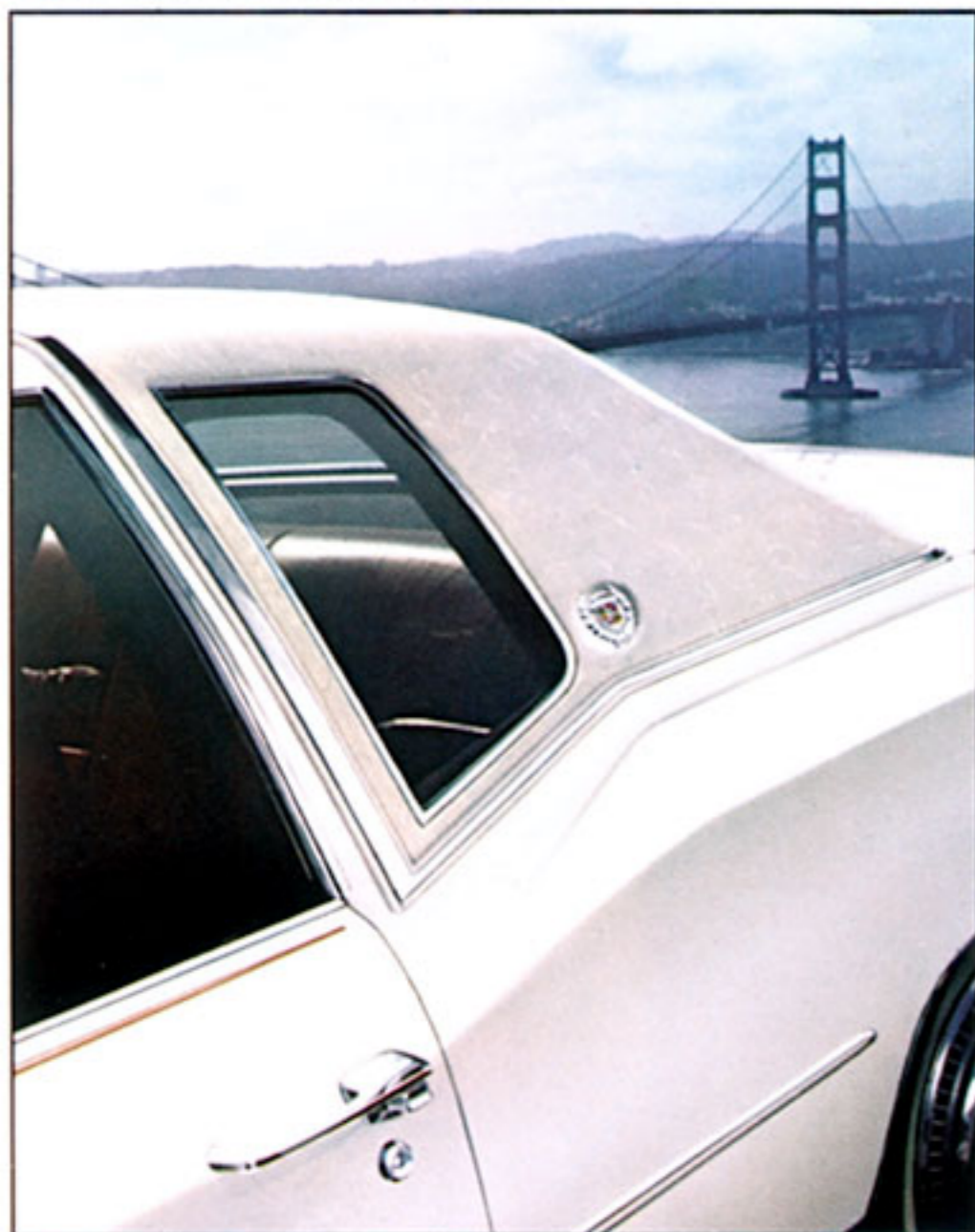
The Traction of Front-Wheel Drive.



New Side Marker Lights and Vertical Tail Lamps.



Cornering Lights, Bumper Impact Strips.



Available Cabriolet Roof.



Four-Wheel Disc Brakes.



Bold New Grille.

Eldorado

BY CADILLAC

The legend lives for 1977.

STANDARD FEATURES

Front-Wheel Drive. Provides impressive traction. Directional stability. And extra front seat roominess because the front floor is flat with front-wheel drive.

Automatic Climate Control. Heating/cooling/dehumidifying system utilizes sophisticated sensors to automatically maintain the temperature you select on the color-coded temperature dial. Redesigned for 1977 so that compressor works only when necessary.

Four-Wheel Disc Brakes. Ventilated discs have cooling fins for rapid heat dissipation. Audible wear signal triggered when pads need replacement.

AM/FM Signal-Seeking Stereo Radio with Scanner and Power Antenna. Depressing the new Scan-Button allows radio to sample each station for approximately six seconds before going on to the next station. Depressing Scan-Button a second time locks in station. New circuitry helps minimize interference from unwanted signals in FM section.

Variable Ratio Power Steering.

Contributes to easy parking and cornering, while retaining the feel of the highway at cruising speeds.

Automatic Level Control. This convenient feature automatically adjusts to changing loads to help keep the car level. Reducing rear-end sag and "bottoming" on severe bumps or ramps.

Power Door Locks and Power Windows. Can be operated individually or with master controls.

Cornering Lights. During nighttime driving, they project light from the side of the car to help illuminate the roadside when turning.

Six-Way Power Seat Adjuster.

Allows driver to adjust front seat forward, back, up, down and tilts forward or back.

Three-Speed Wipers and Washers. A "Mist" position for single-wipe action during light rain.



Freedom™ Battery. Permanently sealed. It never needs water.

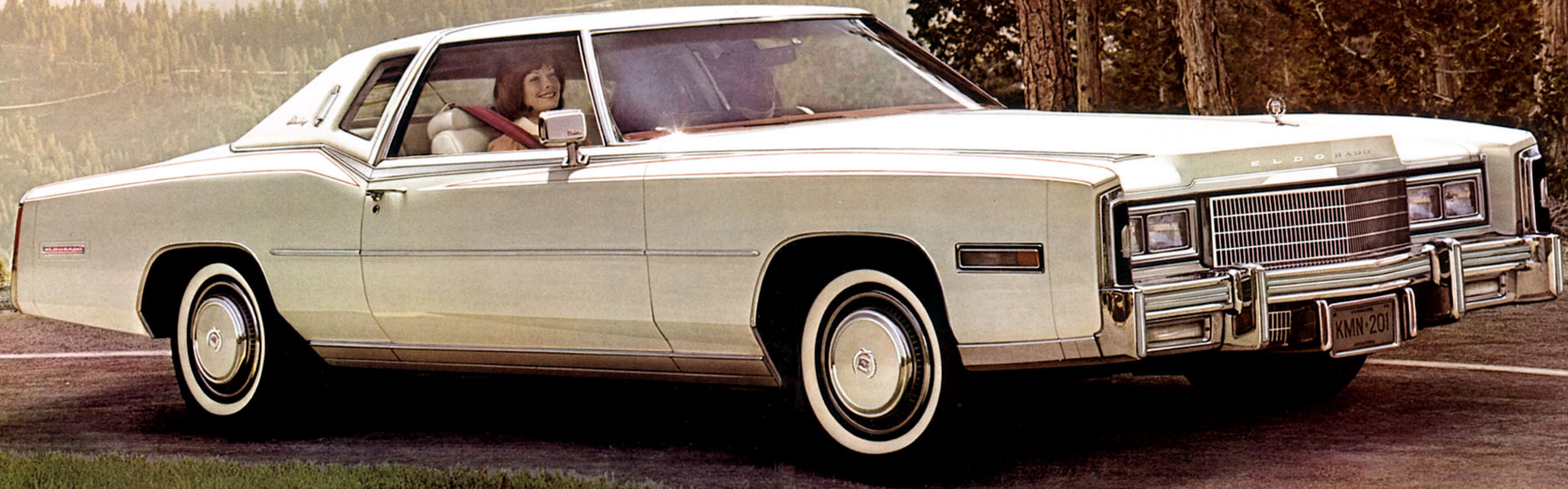
Lamp Monitors. Front fender monitors show if high beam, low beam and parking and signal lamps are functioning. Rear monitor, visible through rearview mirror, reports on taillights, stoplights and turn signals.

High Energy Ignition System. Eliminates points, ignition condenser, cam and rubbing block.

As well as...

- Push-to-Reset Trip Odometer.
- Steel-Belted, Wide-Whitewall Radial Tires.
- Soft Ray Glass.
- Automatic Parking Brake Release.
- Accent Striping.
- Quartz Digital Clock.
- Inside Hood Release.
- Remote Control Left-Side Mirror.
- Washer Fluid Reminder Light.
- Color-Keyed Litter Container.
- Front Center Armrest.
- Visor Vanity Mirror.
- Turbo Hydra-Matic Transmission.
- Cigar Lighters.
- Bumper Impact Strips.
- Stowaway Spare Tire.

At the summit of the automakers' craft.





Eldorado Interiors

Inside you'll find luxury and sportiness. With a wide selection to choose from. Shown left in Dark Blue is Edinburgh Plaid Cloth. Or choose from six other colors. Also available are interiors with soft, supple Sierra grain leather for the seating areas—11 combinations. And for 1977...they are available in bold, exciting two-tones in four color combinations. Including Antique Medium Sage Green with Dark Green inserts (below). (Available when 50/50 Dual Comfort front seats are ordered.)



Features Available

AM/FM Stereo Pushbutton Radio with Citizens Band—Integral 23 Channel CB Transceiver Controls. CB module is installed out of sight in the instrument panel area.

Automatic Door Lock System—Locks all doors automatically when the shift lever is moved to a forward drive position.

Astrorooft—Laminated and tinted safety glass panel lets the sunshine in even when closed. Power-operated. Includes adjustable sun shade.

Sunroof—Operates like the Astrorooft except the electrically-powered panel is not translucent.

Electronic-Fuel-Injected Engine—Designed to offer quick response, fast starting, smooth idle and few scheduled maintenance operations.

Theft Deterrent System—Sounds horn and flashes exterior lights when security of the interior, engine or trunk compartment is violated.

Illuminated Entry System—Pushing front door handle button illuminates door lock cylinders and turns on inside courtesy lights.

Illuminated Vanity Mirror—Visor mirror on the passenger side illuminates when cover is raised. Two light levels.

Fuel Monitor System—Color-coded lights on the instrument panel indicate when fuel consumption rate is efficient or inefficient—and when the fuel supply is low.

Stereo Radio with Tape Player—Includes integral 8-Track

Tape Player with four diagonally-opposed speakers.

50/50 Dual Comfort Front Seats—Each of the two seat sections adjusts individually to give the driver and passengers the comfortable seating position of their choice. (Standard on Biarritz.)

Power Recliner Seats—Available for driver and/or passenger seat with 50/50 Dual Comfort front seats. Includes Six-Way Power Seat Adjuster for passenger seat.

Passenger Six-Way Power Seat Adjuster—Available with 50/50 Dual Comfort front seats only. Included with available Passenger Power Recliner.

Cruise Control—New electronic Cruise Control includes both "Resume" and "Advance" features, offering increased flexibility for speed selection and alteration.

Rear Window Defogger—Electrically-operated grid type.

Twilight Sentinel—Automatically turns driving lights on and off in response to outside light conditions. Also turns lights off after an adjustable time delay.

Guide-Matic Headlamp Control—At night, automatically dims headlamps with approach of oncoming cars...and then returns lights to bright.

Controlled Cycle Wipers—Delay feature adjusts wiping action for light rain or other conditions.

Trailer Package—Heavy-duty equipment grouping for towing up to 6,000 lbs.

AM/FM Stereo with Digital Display—Features electronic

display for the radio station frequency. Also provides time, date and elapsed-time readouts.

Remote Control Trunk Lock Release—With ignition on, a control button inside the glove compartment automatically releases the trunk lid lock. Includes power pulldown.

Tilt and Telescope Steering Wheel—Swings up for easy entry/exit. Also slides and adjusts in or out.

Remote Control Right-Side Mirror—For added convenience. (Standard on Biarritz.)

Firemist Paints—In six metallic colors.

Carpeted Floor Mats—Nine coordinated colors.

Illuminated Outside Thermometer—On left-side mirror.

Special Cabriolet Edition—Includes Cabriolet roof, color-coordinated wheel discs and decorative wreath and crest on sail panels.

As well as... Vinyl roof • Interiors with genuine leather for seating areas... also available in two-tones on 50/50 seats only • Shoulder Belts for Rear Seat Outboard Occupants (dealer-installed) • Door Edge Guards • Trunk Mat • Trumpet Horn • License Frames • Heavy-Duty Cooling System • 80-Amp Generator (Included when Electronic-Fuel-Injected Engine ordered) • Engine Block Heater (dealer-installed) • High Altitude Package • Emission System Standard • California Emission Equipment and Testing. **No charge for...** Front License Plate Mounting Provision • Performance Axle

Eldorado Custom Biarritz

By Cadillac



Elegant French seam roof/window treatment.



Distinctive spear-like design.

Eldorado's appeal takes on a special dimension in this... the Eldorado Custom Biarritz by Cadillac. **It's distinctive.**

With its exclusive Cabriolet roof treatment designed to change the shape and character lines of the Eldorado Coupe. And even an unmistakably different shape and size for the back and rear quarter windows.

It's elegant. With refinements like a matching vinyl insert that accentuates the aluminum cross-over roof molding. A stainless steel accent molding with black accent grooves and a "brushed" center area—running from the rear to the hood. Where its lines widen to a unique spear-like design. A handsome script "Biarritz" designation and a convenient remote control mirror on the passenger side.



Another Biarritz feature — Cadillac Contoured Pillow Style Seating. Shown in Antique Light Buckskin.

It's beautiful. With special accent stripes for the front fenders, doors and rear quarter panels. Fully padded Elk Grain Roof treatment and Opera Lamps. Special color-coordinated wheel discs. And five color combinations to choose from including Buckskin Firemist (below), Cerulean Blue Firemist, Sable Black, Frost Orange Firemist and Cotillion White.

Biarritz is available only with interiors of soft, supple Sierra grain leather for the seating areas. In matching colors. The luxury and comfort of Cadillac Contoured Pillow Style Seating and 50/50 Dual Comfort front seats are standard on the Biarritz. For that final touch of distinction... choose your Eldorado Biarritz with an available Astrorooftop or Sunroof.



Eldorado

BY CADILLAC

Specifications

Engine

8-Cylinder, 90° V-Type
 Bore 103.68 mm (4.082")
 Stroke 103.12 mm (4.060")
 Displacement 7.0 litres (425 cubic inches)
 Compression Ratio 8.2 to 1
 Firing Order 1-5-6-3-4-2-7-8
 Mounts 3 points, rubber insulated
 Emission Controls Positive Crankcase
 Ventilation, Air Injection Reactor,
 Exhaust Gas Recirculation, Early
 Fuel Evaporation, Evaporative
 Control, Oxidizing Converter

Note: Air Injection Reactor System and exhaust pressure transducer for EGR utilized on California and EFI cars only.

Fuel System

Carburetion System 4 BBL "Quadrajel"
 Fuel Filter Carburetor inlet
 Pump Mechanical

Note: The 1977 Cadillac engine is designed to operate only on unleaded gasoline of 91 Research Octane. The gasoline should also have at least a Motor Octane of 83. Unleaded gasoline is essential for proper emission control system operation, and it will reduce spark plug fouling. The use of leaded gasoline can severely minimize the effectiveness of the emission control system and result in the loss of warranty coverage.

Fuel Injection System—Available

Type Speed-density, port injection
 Delivery Time, 2-phase, 4 cyl. each phase
 Filter In-line, 20 micron
 Pumps 2 electric (in-line, in-tank)

Fuel Tank

Capacity 102.2 litres (27 gallons approx.)
 Emission Controls (For Vapor Control) Fuel Tank
 vented through charcoal canister

Electrical

Freedom™ Battery 12 volt, negative ground,
 3500-watt, 66 plates, side
 terminals. No filler/vent caps
 Generator 63 amp
 Voltage Regulator Solid state, integral
 with generator
 Ignition HEI with 8-mm silicone
 insulated wiring

Transmission "425 Series," 3-speed Turbo
 Hydra-Matic for front-wheel drive

Final Drive Front—spiral bevel
 ring gear and pinion
 Ratio—Standard—Federal & Calif. 2.73 to 1
 —Standard in altitude areas and
 available elsewhere 3.07 to 1

Front Suspension Independent Torsion Bar
 Springs Torsion bars
 Stabilizer Bar Link type
 Shock Absorbers Hydraulic direct action

Rear Suspension Four-link—coil spring
 Springs Coil
 Shock Absorbers Hydraulic direct action
 Height Control Automatic Level Control

Brakes Disc—self-adjusting
 Master Cylinder Dual hydraulic
 Power Booster "Hydro-Boost" unit correlated
 with power steering pump

Front & Rear Single piston sliding
 calipers, ventilated discs
 Swept Area (Total) 2960 cm² (459 in.²)
 Lining Material (Front & Rear) Molded asbestos
 Parking Brake Silent action with vacuum release
 Action Mechanical on rear caliper
 Telltale Light Indicates hydraulic malfunction
 or parking brake applied
 Linings Audible wear indicators

Steering Variable Ratio Power
 Damper Hydraulic shock absorber
 Overall Ratio 20.0 to 17.7
 Steering Knuckle Integral knuckle, arm and
 caliper support. Separate
 hub and rotor

Bearings Tapered roller

Frame Perimeter type with heavy
 gauge boxed side rails

Wheels & Tires

Tires GM Specification Steel-Belted Radial
 Sidewall Wide white stripe
 Size LR 78 15B
 Wheels 15 x 6JK

Headlamps 4 Rectangular

Cornering Lamps Integral with side
 marker lamps

Lamp Monitors Standard front and rear

Overall Sizes

Tread Width 1618 mm Front (63.7")
 1615 mm Rear (63.6")
 Wheelbase 3208 mm (126.3")
 Overall Length 5692 mm (224.1")
 Overall Height 1374 mm (54.1")
 Shipping Weight 2247 kg (4955 lbs.)

Safety Features

Occupant Protection

Seat belts with pushbutton buckles for all passenger
 positions
 Two front combination seat and inertia reel shoulder
 belts for driver (with reminder light and buzzer)
 and right front passenger
 Energy-absorbing steering column
 Passenger guard door locks
 Safety door latches and hinges
 Folding seat back latches
 Energy-absorbing padded instrument panel and
 front seat back tops
 Contoured windshield header
 Thick laminate windshield
 Safety armrests
 Safety steering wheel
 Glove box door latch impact security
 Smooth contoured door handles
 Low-profile coat hooks
 Automatic locking front and rear
 outboard seat belt retractors
 Shoulder belt anchorages for
 rear seat outboard occupants
 Pressure lock radiator cap
 High-strength front seat anchor-
 ages and construction
 High-strength rear seat retention
 Stamped steel door hinges

Accident Prevention

Side marker lights and reflectors
 Parking lamps that illuminate with headlamps
 Four-way hazard warning flasher
 Backup lights
 Lane change feature in direction and signal control
 Windshield defrosters, washer and three-speed
 wipers
 Wide-view inside mirror (vinyl-edged, shatter-
 resistant glass and deflecting support)
 Outside rearview mirror
 Dual master cylinder brake system with warning
 light
 Starter safety switch
 Dual action safety hood latch
 Headlamp aiming access provision
 Low-glare instrument panel top, inside windshield
 moldings, wiper arms and blades and steering
 wheel metallic surfaces
 Safety wheel rims
 Uniform shift quadrant
 No-winged wheel nuts, discs and caps
 Disc brakes with audible wear indicators
 Self-adjusting brakes
 Illumination of windshield wiper and washer,
 heater/air conditioning and defroster controls
 Pressure relief gas cap

Anti-theft

Anti-theft ignition key reminder buzzer
 Anti-theft steering column lock
 Anti-theft key system (one key for ignition only;
 other key for glove compartment, doors and trunk)
 Visible vehicle identification

Cadillac Motor Car Division of General
 Motors Corporation reserves the right to
 make changes at any time, without notice,
 in prices, colors, materials, equipment, spe-
 cifications and models and also to discon-
 tinue models. On some of the cars shown
 and described in this catalog are features
 and accessories available at extra cost . . .
 but well worth it for the added driving com-
 fort and convenience they provide.



CADILLAC MOTOR CAR DIVISION
 GENERAL MOTORS CORPORATION



