

The New

CADILLAC

Model G

Persistent demand by motorists everywhere, especially among Cadillac enthusiasts, for a thoroughly high-grade, medium-powered, four-cylinder automobile, at a price somewhat lower than the large touring cars, has led to the production of our new Cadillac Model G. ①

Thus early in the season this racy new type has been universally accepted as a notable example of advanced automobile engineering. The motor, conservatively rated at 20 horse power, is finished in its vital parts to gauges that insure mechanical accuracy to the thousandth of an inch. It is equipped with our automatic ring type governor, which when set by the lever at the steering wheel for a certain speed will practically maintain that speed under all road conditions, up hill or down. A new type of muffler is used, giving a silent exhaust, at the same time almost entirely eliminating back pressure.

Direct shaft drive; transmission of a selective type sliding gear, with gears of a new design that facilitates meshing without crashing and grinding. Direct drive on high speed with no gears in mesh. Wheel base, 100 inches; stylish body design.

At every stage of designing and finishing, Model G has received all the care and thought that could possibly be given a car costing twice as much. Like the other Cadillac Models, it is the car for the critical motorist who wants to know why before he buys.

Let your dealer show you by giving you a demonstration.

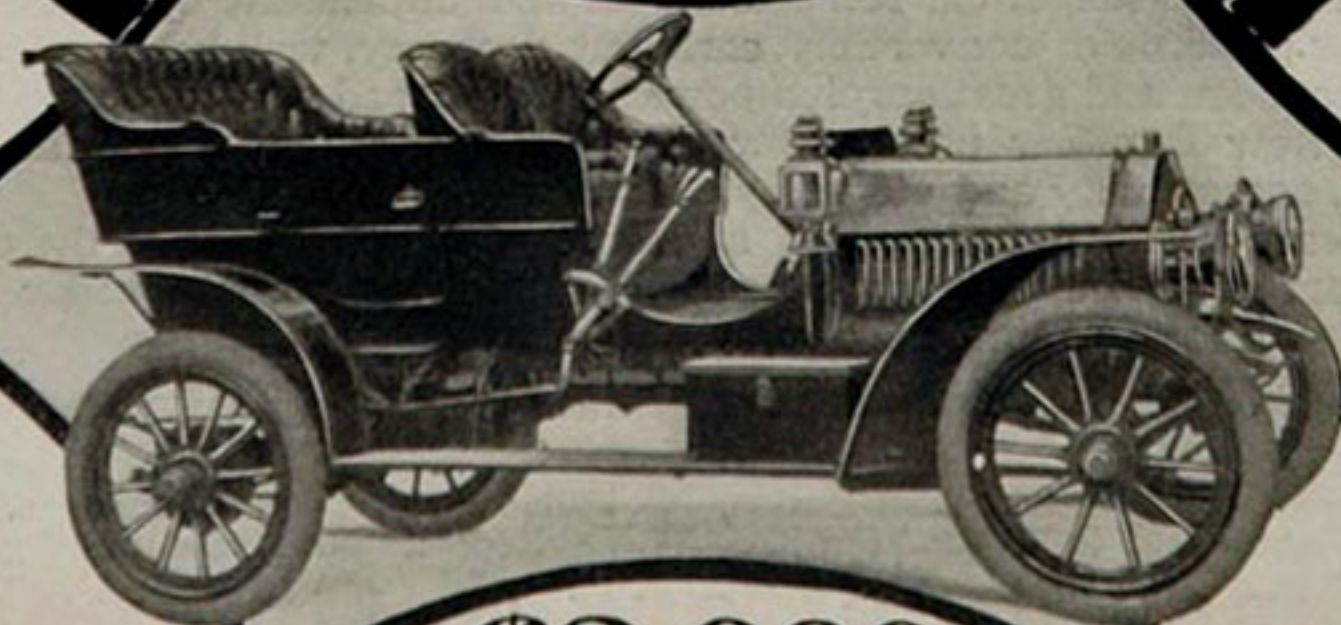
Model G—20 h. p. Four-Cylinder Touring Car; \$2,000.	(Described in Catalog G G)
Model H—30 h. p. Four-Cylinder Touring Car; \$2,500.	(Described in Catalog H G)
Model M—10 h. p. Four passenger car; \$950.	(Described in Catalog M G)
Model K—10 h. p. Runabout; \$800.	(Described in Catalog M G)

All prices F. O. B. Detroit; Lamps not included.

Send for special Catalog of car in which you are interested, as above designated.

CADILLAC MOTOR CAR CO., Detroit, Mich.

Member A440, Licensed Auto. Mfrs.



\$2,000

The Advance Favorite

CADILLAC

Model G



\$2,000

Four Cylinders—25 Horse-power

Every day of service adds emphasis to the fact that the chief difference between Cadillac Model G and cars of the most expensive types is in price, not performance. Time after time it has proven its superiority over competitors of double its cost and thrice its rated power. Let a demonstrator convince you of this by actual tests; then observe the long, rangy lines of the car, its simplicity and strength, its racy, "thoroughbred" appearance, and you will appreciate why Model G is the advance favorite for 1908.

Speedy, silent, responsive, always dependable. Twenty-five horse power (A. L. A. M. rating); sliding gear transmission; shaft drive; 100-inch wheel base. Described in catalog G 10.

Cadillac Model H, a luxurious four-cylinder touring car, also commends itself to your attention. Thirty-horse power; 50 miles an hour; \$2,500. Described in catalog H 10.

The Truth About the Automobile and What it Costs to Maintain One

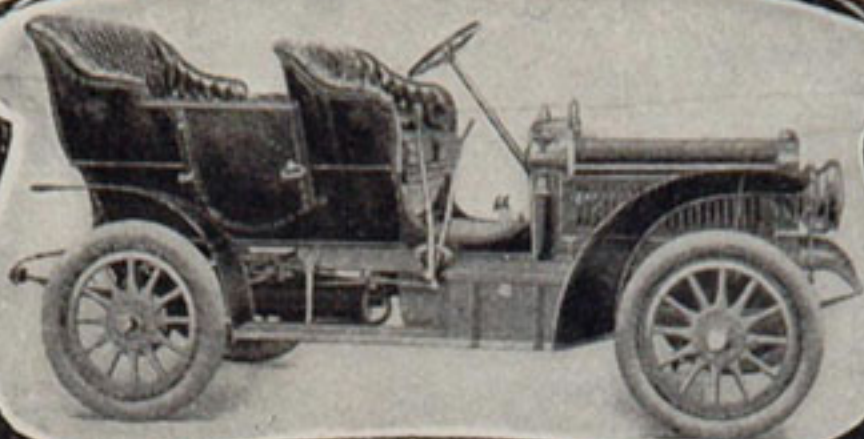
is the title of a 64-page booklet of actual facts and figures compiled from sworn statements of a large number of users of the sturdy single-cylinder Cadillacs. Get a free copy of this valuable brochure, asking for Booklet No. 10. It contains many surprises for those who have been misled into believing that *every* automobile is an expensive luxury.

These smaller Cadillacs—Model S Runabout, \$850, and Model T Touring Car, \$1000, both greatly improved, are described in catalog T 10.

CADILLAC MOTOR CAR CO., DETROIT, MICH.

Member A. L. A. M.

1907



All motordom is agog over the advent of Model H, the brand new four-cylinder Cadillac for 1907, now ready for instant delivery.

In every particular this car is not only up to the minute, but is really *two years* ahead of any other machine on the market. Its many improvements, its mechanical completeness, its superior finish and design, make it imperative for you not to take another step in the purchase of a car until you have learned all about this wonderful

CADILLAC

— an automobile whose smooth and well-balanced action is almost marvelous when compared with that in what has heretofore been accepted as the highest type of motor car. The new and exclusive double acting steering gear greatly increases safety of riding; surprising ease of control is gained through the perfect planetary transmission; a new marine type governor regulates the speed of the engine under all conditions, minimizing vibration and fuel consumption; the independent steel suspension for engine saves wear and strain.

These and a dozen other reasons why you ought to choose the Cadillac will be explained by your nearest dealer. His address, also finely illustrated booklet F, will be sent on request.

Model H will accommodate five persons; 30 horse power; capable of 50 miles an hour. Price \$2,500.

Other Cadillac models are: Model K, Runabout, \$750; Model M, Light Touring Car, \$950. All prices f. o. b. Detroit, and do not include lamps.

**CADILLAC MOTOR CAR COMPANY,
Detroit, Mich.**

Member Asso. Licensed Auto. Mfrs.