

LUCERNE

BUICK.COM

Discover more about Buick and join the dialogue on Facebook.
[facebook.com/buick](https://www.facebook.com/buick)



THE NEW CLASS OF WORLD CLASS



2011 BUICK

LUCERNE





It's not a mirror image of anything. This is a reflection of new ideas. New ways. New views. It signals a departure.

2011 BUICK LUCERNE THE NEW CLASS OF WORLD CLASS

THIS CLASS IS NO ACT.

CARRYING THE NAME BUICK MEANS LUCERNE HAS BEEN WELL THOUGHT OUT. EVERY LINE POLISHED. EVERY TECHNOLOGY PURPOSEFULLY PRECISE. ALL PERFORMANCE OPTIMIZED. WE DESIGNED AND ENGINEERED LUCERNE TO FORM A MORE INTELLIGENT LUXURY SEDAN. NOT SHOW-OFF SMART, JUST LIFE-ENHANCING, PREMIUM, EASY-TO-USE TECHNOLOGIES.

WITH THIS KIND OF BEAUTY, POWER AND BRAINS, ALL WE CAN SAY IS—
THE NEW CLASS OF WORLD CLASS IS NOW IN SESSION.



TAKE POWER INTO YOUR OWN HANDS.

Within Lucerne, motion is generated two ways. Its standard FlexFuel 3.9L 227-hp V-6 engine generates 237 lb-ft of torque and runs on gasoline or E85,¹ a blend of 85 percent ethanol and 15 percent gasoline. The second option is the available all-aluminum 32-valve Northstar 4.6L V-8 powering the Lucerne Super model. Its legendary status is proven with 292 hp, 288 lb-ft of torque and quick acceleration with plenty of reserve power. They're both mated to a smooth-shifting, electronically tuned automatic transmission. For the ultimate in convenience, Lucerne can be started from nearly 200 feet away with an available remote starter system.

¹Go to gm.com/e85 to find an E85 station near you.



292-hp

4.6L V-8 NORTHSTAR ENGINE



IT'S A QUICK STUDY.

Being behind the wheel of the Lucerne Super model means Magnetic Ride Control (MRC) is working for you. It speed-reads the road up to 1,000 times per second, adjusting damper settings to heighten wheel contact, giving you tight handling and a fluid ride—something Infiniti G37 or Lexus ES 350 can't do. Dynamic handling also comes from the four-wheel independent suspension with full-range traction control and StabiliTrak, an electronic stability control system. StabiliTrak constantly monitors Lucerne to help retain traction and assist you in maintaining your steering path for optimal control.

Magnetic Ride Control

SPEED-READS THE ROAD UP TO 1,000 TIMES PER SECOND

TAKE THINGS PERSONALLY.

We've designed and equipped the inside of the Lucerne Super model around you, so it's pleasing to your eyes and your ears. There are jewel-like gauges with LED backlighting and an available leather-wrapped steering wheel accented with a walnut burl finish. You will also find leather-appointed seating with French stitching and perforated suede insets. To arouse your ears, Buick's QuietTuning process reduces, blocks and absorbs noise and vibration to help keep outside noises outside.



LED

BACKLIGHTING ON JEWEL-LIKE GAUGES



Lucerne is smart enough to offer personally empowering technologies. To help guide you, the available touch-screen-activated DVD Navigation System¹ charts over 6 million miles of North American roads. You'll also find OnStar,² which comes standard for six months, featuring guided Turn-by-Turn Navigation. Choose the previously mentioned NAV system, and OnStar Destination Download sends directions to your screen without stopping or entering anything. Or use eNav to find your destination online at MapQuest[®] and have it sent to Lucerne's OnStar system.

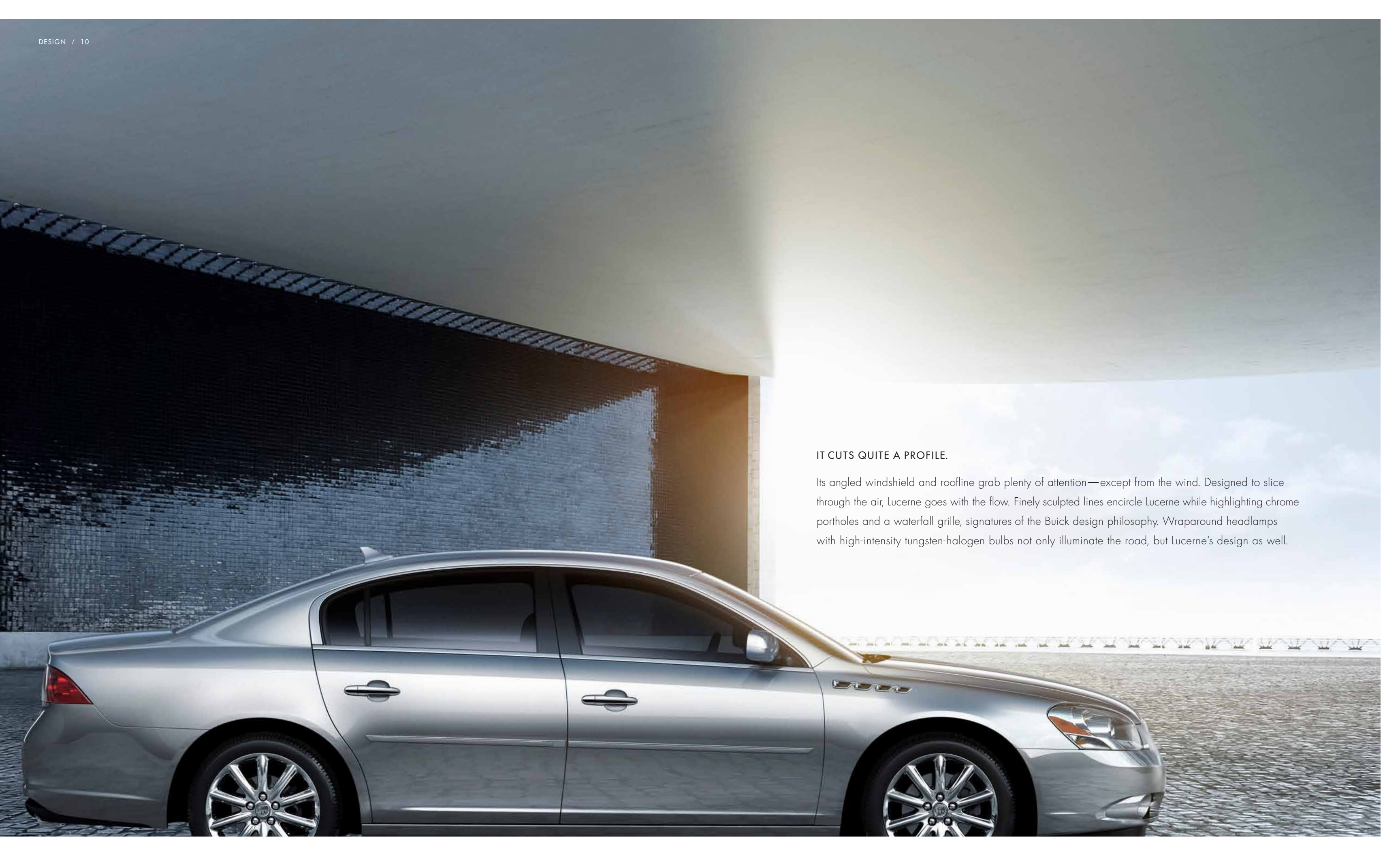
And to navigate those roads, available XM NavTraffic³ incorporates real-time road conditions right into your NAV screen, directing you around trouble spots and toward the most efficient route. For your entertainment pleasure, the available nine-speaker, 280-watt Harman Kardon[®] sound system is tuned and equalized precisely for Lucerne's cabin. And to help keep your eyes on the road, and your hands on the wheel, optional Bluetooth^{®4} offers the ease of hands-free calling.

¹Map coverage available in the United States, U.S. Virgin Islands, Puerto Rico and Canada.

²Visit onstar.com for coverage map, details and system limitations. Services vary with conditions.

³Required XM Radio and XM NavTraffic monthly subscriptions sold separately by XM after trial period. XM NavTraffic only available in select markets. Certain real-time traffic data provided by NAVTEQ. ©2010 NAVTEQ. For more information, see xmradio.com/navtraffic.

⁴Go to gm.com/bluetooth to find out which Bluetooth phones are compatible with the vehicle.



IT CUTS QUITE A PROFILE.

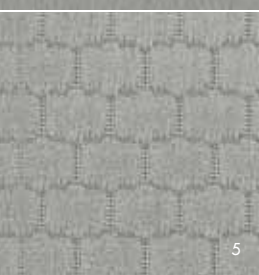
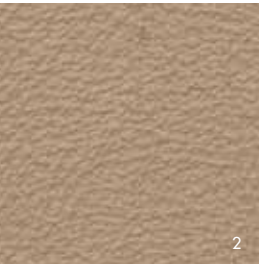
Its angled windshield and roofline grab plenty of attention—except from the wind. Designed to slice through the air, Lucerne goes with the flow. Finely sculpted lines encircle Lucerne while highlighting chrome portholes and a waterfall grille, signatures of the Buick design philosophy. Wraparound headlamps with high-intensity tungsten-halogen bulbs not only illuminate the road, but Lucerne's design as well.



INTERIOR COLORS

from top to bottom:

SHALE LEATHER-APPOINTED SEATING (1) WITH PERFORATED SUEDE INSERTS (SUPER ONLY) AND COCOA TRIM.
 CASHMERE LEATHER-APPOINTED SEATING (2) WITH COCOA TRIM. ALSO AVAILABLE IN CASHMERE CLOTH (3).
 TITANIUM LEATHER-APPOINTED SEATING (4) WITH EBONY TRIM. ALSO AVAILABLE IN TITANIUM CLOTH (5).



ACCESSORIES¹

from top to bottom:

REAR SPOILER Aerodynamically designed, this custom-molded spoiler complements the styling of your Lucerne. Available in select colors or can be painted to match.

CARGO TRAY Custom-molded with a heavy-duty nonskid surface to fit the exact dimensions of your vehicle. A raised outer lip helps contain cargo and spills.

REAR SPLASH GUARDS Gain maximum protection from splashes and mud with these easy-to-install contoured splash guards for your Lucerne.

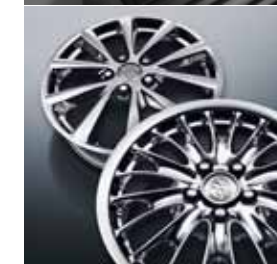
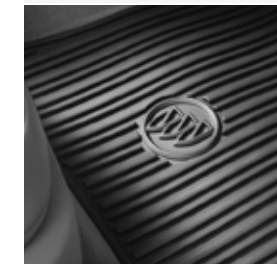
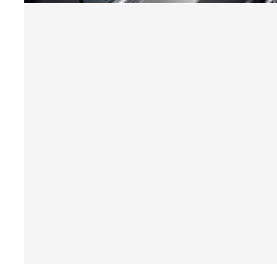
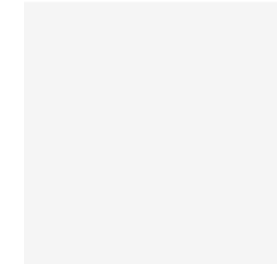
SIDE-WINDOW WEATHER DEFLECTORS Let fresh air in and keep rain, sleet and snow out with these dual-function vent-and-visor deflectors. Custom-molded to fit your Lucerne, they reduce wind noise and sunlight glare. A mesh rear side-window sunshade is also available to further help deflect the sun.

ALL-WEATHER FLOOR MATS Front and rear premium floor mats, custom-designed to conform to Lucerne, have deep patterned grids to collect rain, mud, snow and debris. Nibs on back help hold mats securely in place.

18-INCH CHROME WHEELS² Add a new level of dimension to your Lucerne with two stunning 18-inch choices. They are cast from high-strength aluminum, then given a long-lasting, brilliant chrome finish.



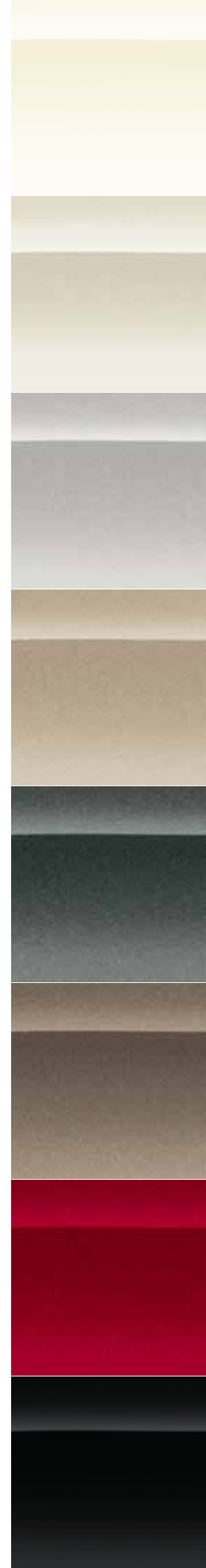
¹Available dealer-installed accessories.
²Use only GM-approved tire and wheel combinations. Unapproved combinations may change the vehicle's performance characteristics. For important tire and wheel information, go to gmaccessorieszone.com or see your dealer for details.
³Additional charge, premium paint.



EXTERIOR COLORS

from top to bottom:

WHITE OPAL
 WHITE DIAMOND TRICOAT³
 QUICKSILVER METALLIC
 SAND BEIGE METALLIC
 CYBER GRAY METALLIC
 LIGHT BRONZE METALLIC³
 CRYSTAL RED TINTCOAT³
 BLACK ONYX



	CX	CXL	SUPER
POWER AND PERFORMANCE			
ENGINES 3.9L V-6 SFI engine with Variable Valve Timing (VVT) and FlexFuel	S	S	–
Northstar 4.6L DOHC 32-valve V-8	–	–	S
TRANSMISSION 4-speed automatic, enhanced electronic	S	S	S
SUSPENSION 4-wheel independent, Ride and Handling	S	S	–
4-wheel independent, Super	–	–	S
Automatic level control, electronic, rear	S	S	S
Magnetic Ride Control	–	–	S
STEERING Power rack-and-pinion	S	S	–
Power magnetic rack-and-pinion with variable assist	–	–	S
BRAKES 4-wheel anti-lock, 4-wheel disc with dynamic rear proportioning	S	S	S
STABILITRAK Vehicle stability enhancement system with Brake Assist	S	S	S
TRACTION CONTROL Full range, powertrain and brake modulated	S	S	S
EXHAUST Stainless steel with chrome tip	S	S	–
Dual stainless steel with chrome tips	–	–	S
BATTERY Rundown protection	S	S	S
ENGINE BLOCK HEATER	A	A	A
TIRES All-season, blackwall	S	S	S
COMFORT AND CONVENIENCE			
SEAT TRIM Cloth	S	–	–
Leather-appointed	–	S	–
Leather-appointed with perforated suede insets	–	–	S
SEATING 5-passenger seating	S	S	S
6-passenger seating. Requires US8 audio.	A	A	–
Heated driver and front passenger seating	–	S	–
Heated and cooled driver and front passenger seating	–	–	S
Driver and front passenger 6-way power seat adjusters	S	–	–
Driver and front passenger 8-way power seat adjusters with 4-way power lumbar control	–	S	S
MEMORY SETTINGS Includes presets for 2 drivers, 8-way power driver/front-passenger seat with easy-exit driver seat and outside mirrors	–	S	S
ARMRESTS Rear center with dual cupholders and trunk pass-through	S	S	S
Console with storage bin, dual cupholders	S	S	S

S = Standard A = Available – = Not Available

	CX	CXL	SUPER
COMFORT AND CONVENIENCE (CONTINUED)			
ASSIST HANDLES Front passenger and 2 rear outboard with coat hooks	S	S	S
INSTRUMENTATION With coolant temperature, tachometer, fuel gauge, speedometer, Driver Information Center and compass	S	S	S
BLUETOOTH ¹ For phone, personal cell-phone connectivity to vehicle audio system	A ²	S	S
STEERING WHEEL Leather-wrapped with mounted audio and cruise controls	S	–	–
Heated, leather-wrapped with mounted audio and cruise controls	–	S	–
Heated wood with walnut burl finish and mounted audio and cruise controls	–	–	S
Tilt-adjustable steering column	S	S	–
Power tilt and telescopic steering column	–	–	S
REMOTE VEHICLE STARTER SYSTEM	–	A ²	S
REAR PARKING ASSIST Ultrasonic with audible warning	–	A ²	S
CRUISE CONTROL	S	S	S
LIGHTING Interior glove box, trunk, delayed entry/exit with theater dimming, rear courtesy and front map lights	S	S	S
Interior rear reading, switchable	S	S	S
MIRRORS Inside rearview, auto-dimming	S	S	–
Inside rearview, auto-dimming with compass display	–	–	S
VISORS Driver and front passenger illuminated vanity mirrors, sliding	S	S	S
CLIMATE CONTROL Air conditioning, single-zone manual with air-filtration system	S	–	–
Air conditioning, dual-zone automatic with air-filtration system for driver and front passenger and rear-seat heating and cooling outlets	A ²	S	S
Defogger, rear-window electric	S	S	S
WINDOWS Power with driver express-down	S	S	S
POWER OUTLETS Auxiliary, 12-volt (2)	S	S	S
SUNROOF Power, tilt-sliding	–	A	S
FLOOR MATS Color-keyed, carpeted, front and rear, stain-resistant	S	S	S
TRUNK RELEASE Power	S	S	S
RETAINED ACCESSORY POWER Power windows and audio system remain operational after ignition is switched off for 10 minutes or until a door is opened	S	S	S
QUIETTUNING Buick-pioneered process to reduce, block and absorb noise and vibration to create a quiet interior cabin	S	S	S

	CX	CXL	SUPER
ENTERTAINMENT SYSTEMS			
(US8) AM/FM/XM ³ stereo with CD player and MP3 playback, includes seek-and-scan, digital clock, auto-tone control, speed-compensated volume, TheftLock, Radio Data System (RDS) ⁴ and auxiliary audio jack. Requires 6-passenger seating.	A	A	–
(UUM) AM/FM/XM ³ stereo with MP3-compatible CD player with 6" touch-screen navigation, ⁵ seek-and-scan, digital clock, auto-tone control, RDS, ⁴ speed-compensated volume, auxiliary input jack and USB port ⁶	–	A	S
(UUI) AM/FM/XM ³ stereo with CD player and MP3 playback, includes seek-and-scan, digital clock, auto-tone control, RDS, ⁴ speed-compensated volume, TheftLock, auxiliary input jack and USB port. ⁶ On CX and CXL models, requires 5-passenger seating.	S	S	–
PREMIUM AUDIO Harman Kardon [®] 9-speaker, 280-watt audio system	–	A	S
XM RADIO ³ XM Radio includes 3 trial months of service. For more information, visit gm.xmradio.com.	S	S	S
XM NAVTRAFFIC ⁷ Satellite-delivered traffic information service that enhances a GPS navigation system with the ability to show real-time traffic data. Requires UUM audio system with navigation. Includes 3 trial months of service.	–	A	S
USB PORT ⁶ On CX and CXL models, requires 5-passenger seating	S	S	S
SAFETY AND SECURITY			
SAFETY BELTS 3-point, driver and front passenger, height-adjustable, includes pretensioners	S	S	S
3-point, rear, all seating positions	S	S	S
LATCH (Lower Anchors and Top tethers for Children) system for child safety seats	S	S	S
AIR BAGS ⁸ Dual-stage frontal driver and dual-depth right-front passenger with Passenger Sensing System, driver and right-front passenger side-impact	S	S	S
Head curtain, side-impact for front and rear outboard seating positions	S	S	S
POWER DOOR LOCKS Programmable with lockout protection	S	S	S
Child security door locks, rear	S	S	S
ONSTAR ⁹ 6 months of Directions & Connections plan	S	S	S
THEFT-DETERRENT SYSTEMS Vehicle, PASS-Key III	S	S	S
Content theft alarm	–	A ²	S
UNIVERSAL HOME REMOTE 3-channel programmable with garage door opener	A ²	S	S

	CX	CXL	SUPER
SAFETY AND SECURITY (CONTINUED)			
LANE DEPARTURE WARNING Requires Side Blind Zone Alert and outside heated power-adjustable mirrors	–	A	S
SIDE BLIND ZONE ALERT Radar-equipped sensing system. Requires Lane Departure Warning and outside heated power-adjustable mirrors.	–	A	S
TIRE PRESSURE MONITOR SYSTEM Does not apply to spare tire	S	S	S
TIRE SEALANT AND INFLATOR KIT	A	–	–
WHEEL Spare, compact, steel	S	S	–
Spare, compact, aluminum	–	–	S
STYLING AND FUNCTIONALITY			
LIGHTS Halogen composite with Twilight Sentinel and flash-to-pass feature	S	S	S
Fog lamps, front halogen with projector beam	S	S	S
Daytime running lamps, switchable	S	S	S
Front cornering lamps, front turn signal	S	S	S
GLASS Solar-Ray light-tinted	S	S	S
OUTSIDE MIRRORS Heated, power-adjustable and driver-side, auto-dimming, body-color, manual-folding	S	S	–
Heated, power-adjustable and driver-side auto-dimming, body-color, manual-folding with integrated turn signal indicators	–	A	S
MOLDINGS Bodyside body-color with bright inserts	S	S	S
Body-color rocker panel	S	S	S
FASCIA Front body-color with integrated chrome grille	S	S	S
PACKAGES			
COMFORT AND CONVENIENCE PACKAGE Includes dual-zone automatic climate control, Universal Home Remote, trunk cargo convenience net, Bluetooth technology for phone ¹	A	S	S
DRIVER CONFIDENCE PACKAGE Includes content theft alarm system, remote vehicle starter system and Ultrasonic Rear Parking Assist	–	A	S

¹Go to gm.com/bluetooth to find out which Bluetooth phones are compatible with the vehicle.²Requires available option package.³XM Radio requires a subscription, sold separately by XM after the first 90 days. XM Radio U.S. service only available in the contiguous United States and the District of Columbia. For more information, visit gm.xmradio.com.⁴RDS functions only where stations broadcast RDS information.⁵Map coverage available in the United States, U.S. Virgin Islands, Puerto Rico and Canada.⁶Not compatible with all devices.⁷Required XM Radio and XM NavTraffic monthly subscriptions sold separately by XM after trial period. XM NavTraffic only available in select markets. Certain real-time traffic data provided by NAVTEQ. ©2010 NAVTEQ. For more information, visit xmradio.com/navtraffic.⁸Always use safety belts and the correct restraint for your child's age and size. Even in vehicles equipped with the Passenger Sensing System, children are safer when properly secured in a rear seat in the appropriate infant, child or booster seat. Never place a rear-facing infant restraint in the front seat of any vehicle equipped with a passenger air bag. See the Owner's Manual and child safety seat instructions for more safety information.⁹OnStar services require vehicle electrical system (including battery), wireless service and GPS satellite signals to be available and operating for features to function properly. OnStar acts as a link to existing emergency service providers. Subscription service agreement required. Call 1-888-4ONSTAR (466-7827) or visit onstar.com for OnStar's Terms and Conditions, Privacy Policy, details and system limitations.

	CX	CXL	SUPER
WHEELS			
N75 17" Bright Silver finish, aluminum	S	S	-
PA2 17" chrome-plated aluminum	-	A	-
P31 18" chrome-plated aluminum	-	-	S



N75 17"



PA2 17"



P31 18"

SPECIFICATIONS AND CAPACITIES

	CX	CXL	SUPER
ENGINE TYPE	3.9L VVT V-6 SFI FlexFuel	3.9L VVT V-6 SFI FlexFuel	Northstar 4.6L DOHC V-8
HORSEPOWER (HP @ RPM)	227 @ 5700	227 @ 5700	292 @ 6300
TORQUE (LB-FT @ RPM)	237 @ 3200	237 @ 3200	288 @ 4500
EPA-ESTIMATED MPG	17 city/26 hwy	17 city/26 hwy	15 city/22 hwy
CARGO CAPACITY¹	17 cu.ft.	17 cu.ft.	17 cu.ft.
SEATING CAPACITY, FRONT/REAR	2/3 (optional) 3/3	2/3 (optional) 3/3	2/3
FUEL TANK (APPROX.)	18 gallons	18 gallons	18 gallons
BASE CURB WEIGHT	3,735	3,806	3,998

S = Standard A = Available - = Not Available

¹Cargo and load capacity limited by weight and distribution.

	CX, CXL, SUPER
DIMENSIONS (INCHES)	
WHEELBASE	115.6
OVERALL LENGTH	203.2
BODY WIDTH	73.8
OVERALL HEIGHT	58.0
FRONT TRACK WIDTH (CX, CXL)	63.0
FRONT TRACK WIDTH (SUPER)	62.6
REAR TRACK WIDTH (CX, CXL)	62.5
REAR TRACK WIDTH (SUPER)	62.1
HEAD ROOM, FRONT	39.5
HEAD ROOM, REAR	37.6
SHOULDER ROOM, FRONT	58.0
SHOULDER ROOM, REAR	57.0
HIP ROOM, FRONT	56.1
HIP ROOM, REAR	57.0
LEG ROOM, FRONT	42.5
LEG ROOM, REAR	41.4

IMPORTANT WORDS ABOUT THIS CATALOG.

Since some information may have been updated since the time of printing (July 2010), please check with your Buick dealer for complete details. Buick reserves the right to lengthen or shorten the model year for any product for any reason, or to start and end model years at different times.

NEW-VEHICLE LIMITED WARRANTY. This warranty is for GM vehicles registered in the U.S.A. See your Buick dealer for terms and conditions.

A 5-year/100,000-mile (whichever comes first) Transferable Powertrain Limited Warranty plus Roadside Assistance and Courtesy Transportation.

Covered for 4 years/50,000 miles (whichever comes first): The complete vehicle | Cosmetic corrosion resulting from defects | Tires | Repairs made to correct any vehicle defect | Towing to your nearest Buick dealership | No charge for most warranty repairs

Covered for 6 years/100,000 miles (whichever comes first): Rust-through corrosion

AN IMPORTANT NOTE ABOUT ALTERATIONS AND WARRANTIES. Installations or alterations to the original equipment vehicle (or chassis) as distributed by General Motors are not covered by the General Motors New-Vehicle Limited Warranty. The special body company, assembler, equipment installer or upfitter is solely responsible for warranties on the body or equipment and any alterations (or any effect of the alterations) to any of the parts, components, systems or assemblies installed by GM. General Motors is not responsible for the safety or quality of design features, materials or workmanship of any alterations by such suppliers.

ASSEMBLY. Buick vehicles and their components are assembled or produced by different operating units of General Motors, its subsidiaries or suppliers to GM worldwide. We sometimes find it necessary to produce Buick vehicles with different or differently sourced components than originally scheduled. Since some options may be unavailable when your vehicle is assembled, we suggest that you verify that your vehicle includes the equipment you ordered or, if there are changes, that they are acceptable to you.

ENGINES. Buick products are equipped with engines produced by GM Powertrain or other suppliers to GM worldwide. The engines in Buick products may also be used in other GM makes and models.

TRAILERING AND OFF-ROAD DRIVING INFORMATION. Please go to buick.com and carefully review the vehicle Owner's Manual for important safety information about trailering or off-road driving in your vehicle.

A NOTE ABOUT CHILD SAFETY. Always use safety belts and the correct restraint for your child's age and size. Even in vehicles equipped with the Passenger Sensing System, children are safer when properly secured in a rear seat in the appropriate infant, child or booster seat. Never place a rear-facing infant restraint in the front seat of any vehicle equipped with a passenger air bag. See the Owner's Manual and child safety seat instructions for more safety information.



FLEET ORDERS. Some standard content may be deleted with fleet orders. See dealer for details.

ENHANCE YOUR OWNERSHIP EXPERIENCE. The Owner Center at My GMLink is an online service that helps you make the most of your vehicle ownership.

Sign up for e-mail reminders about service visits | Keep an online history of services performed | Read your vehicle Owner's Manual, warranty and more online | Receive the recall notices that apply only to your vehicle | Watch do-it-yourself videos and much more.

Register today at mygmlink.com.

GM, the GM logo, Buick, the Buick emblem, OnStar, the OnStar emblem and the slogans, emblems, vehicle model names, vehicle body designs and other marks appearing in this catalog are the trademarks and/or service marks of General Motors, its subsidiaries, affiliates or licensors. The XM name and related logos are registered trademarks of XM Satellite Radio, Inc. Facebook is a registered trademark of Facebook, Inc. ©2010 General Motors. All rights reserved. Litho in U.S.A., July 2010.

To learn more about why Goodwrench service is the perfect companion for your Lucerne, click on goodwrench.com.

