

2006BUICKRENDEZVOUS



BUICK.COM / 800.4.A.BUICK





THE QUALITY OF YOUR LIFE

Beautifully sculpted body panels that fit together with eye-

eye-pleasing precision. Quiet cabins that become a

sanctuary from the outside world. Fabrics and materials

that would feel perfectly at home in your home. Engines

so smooth you may have to check the tachometer to be

sure they're running. Suspensions that strike the elusive

balance between precise control and a comfortable

ride. Technology designed to help protect you and

your family before, during and even after a collision.

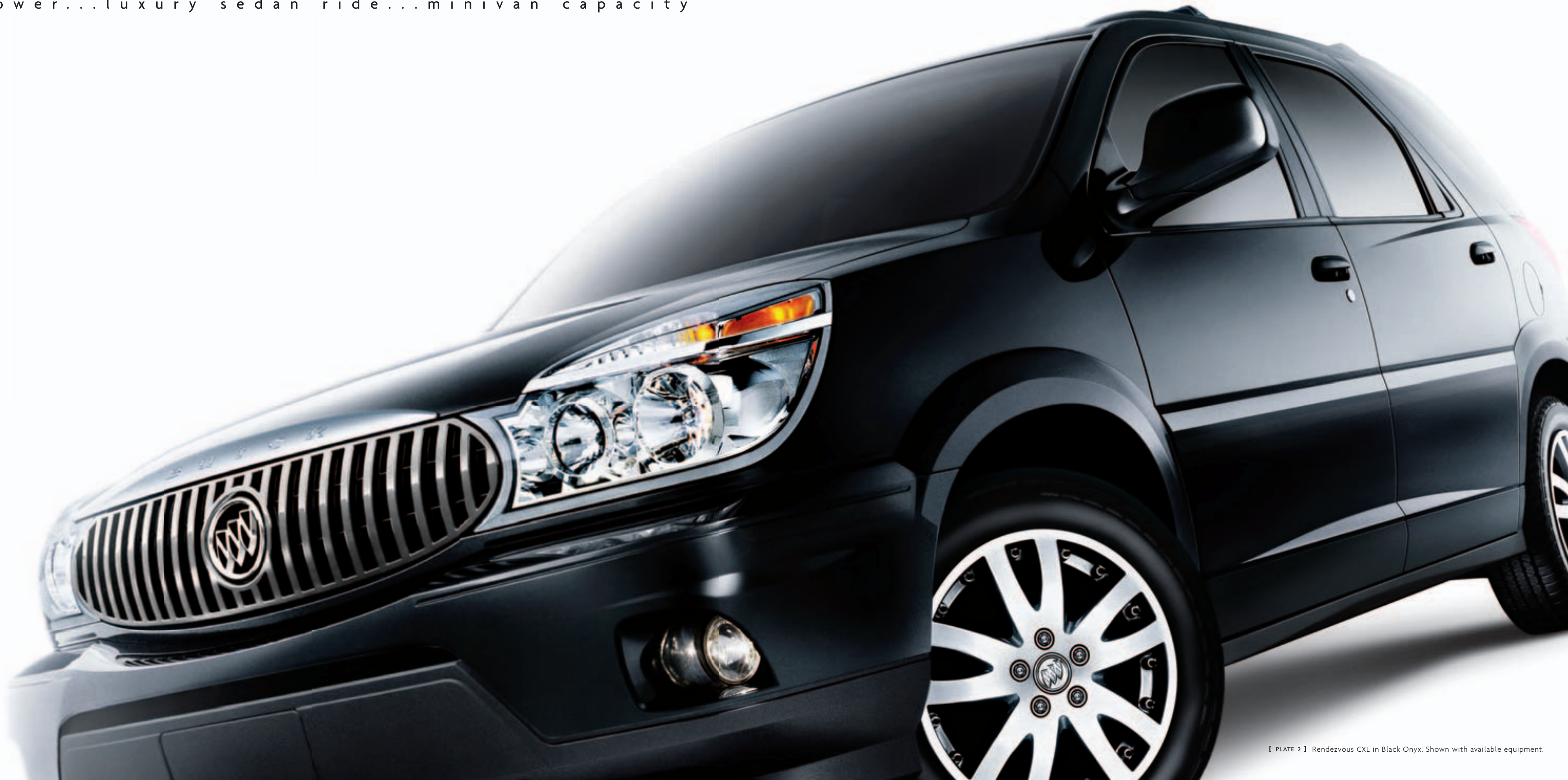
Craftsmanship you sense everywhere you turn. Can cars

have a level of quality that can actually improve the

quality of your life? Welcome to Rendezvous.

BUICK

S U V p o w e r . . . l u x u r y s e d a n r i d e . . . m i n i v a n c a p a c i t y



[PLATE 2] Rendezvous CXL in Black Onyx. Shown with available equipment.

Sedans have been around since the 17th century. SUVs since World War II. Minivans since kids discovered soccer. They're all great vehicles, but sometimes you need a little of each of them. So, what if the styling and capabilities of an SUV, the ride and comfort of a luxury sedan and the seating capacity of a minivan were all offered together? Now that would be one very intelligent, innovative and versatile crossover vehicle. That would be Buick Rendezvous.

And now every Rendezvous has the impressive advantages of QuietTuning™. A Buick-pioneered process, QuietTuning reduces noise at its source, blocks the noise path and absorbs noise before it reaches passengers' ears. All to transform the cabin into a hushed sanctuary from the outside world. It's time to cross over to the refined design of Rendezvous.



RENDEZVOUS: *crossing over the conventional*





【 PLATE 5 】 Rendezvous CXL first- and second-row leather-appointed seating with available premium sueded fabric inserts.



[PLATE 6] Rendezvous instrument panel. Expertly crafted, chrome accented. Shown with available equipment.



QUIETTUNING

Rendezvous has always been a sophisticated vehicle. But for 2006 and beyond, our engineers wanted to achieve much more impressive levels of interior quietness. So they specified QuietTuning. It's a Buick-pioneered process that employs the following three strategies to transform Rendezvous' cabin into a sanctuary from the outside world.

A. REDUCE NOISE AT ITS SOURCE

Clearly, noise that's addressed at its source is noise that can't enter a vehicle and disturb its passengers. That's where our engineers began their quest for quiet. They employed *acoustic damping* on the plenum and they addressed a source of noise most people might never consider. Tires rolling over pavement can create a surprising amount of noise, so our engineers specified *quiet-tread tires*. These tires have a rubber composition designed not only to provide good grip, but also to produce very little tread noise.

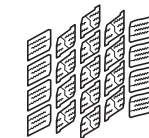
B. BLOCK THE NOISE PATH

Much of the noise that can't be eliminated at its source can be denied entry into the passenger compartment of a vehicle. To that end, our engineers studied the noise entering the interior of Rendezvous and found several ways to make a real difference. *Enhanced absorbers* on the hood and plenum absorb a significant amount of engine noise before it gets near the passenger compartment. *Acoustic laminate front side-door glass* is specified for every Rendezvous. Essentially two layers of glass of different thicknesses with a thin film of plastic laminated in between, it is this layered construction that helps block sound. *Enhanced seals* are incorporated on all four door handles. *Denser, heavier acoustic material* is placed between the engine compartment and the passenger cabin. Plus *improved sealing techniques* reduce wind noise.

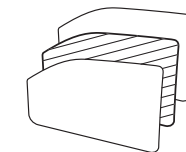
C. ABSORB NOISE IN THE CABIN

Despite all the efforts to deny its entry into the passenger compartment of Rendezvous, some noise manages to sneak in. Our engineers have an acoustic welcoming party waiting. *Special acoustic materials* are strategically positioned behind the instrument panel to help absorb noise before it ever reaches the ears of Rendezvous' driver and passengers. The final result of QuietTuning is a peaceful calm that pervades the cabin of Rendezvous. You'll be amazed by what you don't hear.

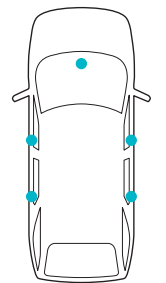
QuietTuning



A.



B.

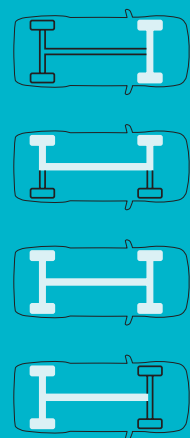


C.

capabilities

A. ON-DEMAND ALL-WHEEL DRIVE

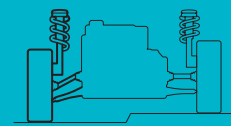
This technologically innovative system uses front-wheel drive for ordinary driving conditions. But when slippery road surfaces are encountered, the available system automatically adds power to the rear wheels without perceptibly affecting comfort or handling. Inside the rear-drive module, twin pumps react to any difference in the rotational speed of the front and rear wheels. If one of the front wheels begins to slip, the rear-mounted gerotor units pressurize fluid to engage clutches that redirect torque to one or both rear wheels. This helps the rear wheels to smoothly and seamlessly provide traction, which allows Rendezvous to keep moving despite muddy, snowy or slippery road surfaces. Even if both front wheels and one rear wheel are slipping, power can be directed to the other rear wheel. And when the system detects that the front wheels have regained good traction, it moves back into its front-wheel drive mode.



A.

B. INDEPENDENT FRONT SUSPENSION/HYDROFORMED ENGINE CRADLE

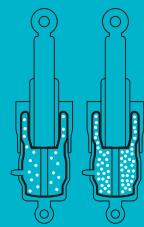
Rendezvous' front suspension is specifically engineered to optimize handling and stability, while at the same time delivering the ride characteristics of a comfortable sedan. Proven MacPherson strut technology is coupled with four-stage damper valving for handling and control. The front lower control arms and hydroformed engine cradle provide strength to help absorb road inputs, providing a smooth ride and precise handling. Hydroforming uses the power of pressurized fluid sealed in a hollow round cradle rail to help precisely form the shape of the cradle for consistent steel wall thickness and dimensional control.



B.

C. INDEPENDENT REAR SUSPENSION/AUTOMATIC REAR-LEVEL CONTROL

Rendezvous' rear suspension is fully independent. It employs a short and long arm design with unequal-length control arms and a toe-control link. The upper and lower control arms, knuckles and cross-members are fabricated from aluminum to help maximize strength while minimizing mass. Premium monotube shock absorbers help provide excellent wheel control and road isolation compared to a twin-tube design. Plus, the rear suspension is isolated from the body to reduce the road noise and smooth the ride. The automatic rear-level control system, included in the available trailering package, is designed to help improve ride and handling while carrying loads. It works by adding an air bladder around each rear shock absorber which is inflated by an on-board compressor. It automatically helps level the rear of the vehicle when heavy loads are carried or a trailer is connected.



C.

D. 3,500-LB. TOWING CAPACITY

Rendezvous has the power to tow up to 3,500 lbs. with its optional towing package, which includes the automatic rear-level control system.

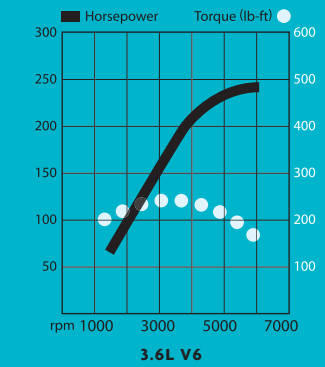
Maximum trailer weight ratings are calculated assuming a base vehicle, except for any options necessary to achieve the rating, plus driver. The weight of other optional equipment, passengers and cargo will reduce the maximum trailer weight your vehicle can tow. See your dealer for additional details.



[PLATE 8] Multiple gerotor clutch plates — part of Rendezvous' available all-wheel drive system.



【 PLATE 9 】 Versatility in motion. Rendezvous CXL in Black Onyx. Shown with available equipment.



A. 3.6L VVT V6 ENGINE

GM recently developed, from a clean sheet of paper, a new family of sophisticated V6 engines for global application in premium and high-performance vehicles. The 3.6L version of this V6 family was the first to go into production. It is one of GM's most advanced engines, and the Buick Rendezvous was the first front-wheel drive architecture in the world to have it under the hood. Some of the world-class features of this available all-aluminum engine include: The use of fully variable valve timing (VVT) for both intake and exhaust, a first for any GM engine, provides outstanding fuel economy and emissions reduction. Variable valve timing also gives this engine extreme flexibility. 90% of its peak torque is available across a broad operating range: 1,600–5,800 rpm. Its horsepower and torque are equally impressive: 242 hp, 232 lb-ft torque.

B. DUAL OVERHEAD CAMSHAFTS WITH FOUR VALVES PER CYLINDER

The more intake and exhaust valves an engine has, the easier it can breathe. That is to say, the easier it can draw the fuel/air mixture into the combustion chambers, and the easier it can expel the spent gases of combustion. With dual overhead cams controlling four valves per cylinder, this engine breathes very well indeed. All of which results in better efficiency, better economy,* and more power.

*EPA estimated mpg 18 city/25 hwy (AWD); 18 city/27 hwy (FWD).

C. ELECTRONIC THROTTLE CONTROL

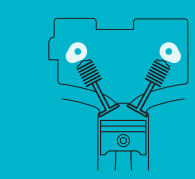
Often seen on premium automobiles, electronic drive-by-wire throttle control is a look at the future. There is no cable link between the accelerator and the engine. A sensor at the gas pedal measures pedal angle and sends a signal to the engine control computers to open the throttle at the correct rate. The result is quick, precise throttle response and improved reliability.

D. 3.5L V6 ENGINE

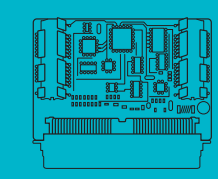
The standard 3.5L V6 engine has a well-earned history of providing smooth, reliable power. It employs an overhead valve design for maximum simplicity and reliability. Roller hydraulic lifters and rocker arms minimize running friction. Durable forged-steel connecting rods ride on a cast nodular crankshaft supported by four main bearings. The cylinder block is an iron casting topped with lightweight aluminum heads. A cast aluminum oil pan helps contain noise by stiffening lower portions of the engine assembly. The platinum-tipped spark plugs have a normal service life of up to 100,000 miles. No tune-up is necessary for any other part of the ignition system. The engine coolant lasts up to 150,000 miles in normal service. This is a reliable, low-maintenance engine that develops 195 hp and 215 lb-ft of torque, yet still earns EPA estimated fuel economy ratings of 19 city/26 highway in its front-wheel drive configuration and 18 city/23 highway in its all-wheel drive configuration.

Maintenance needs vary with different uses and driving conditions. See the Owner's Manual for more information.

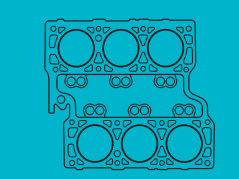
power



B.



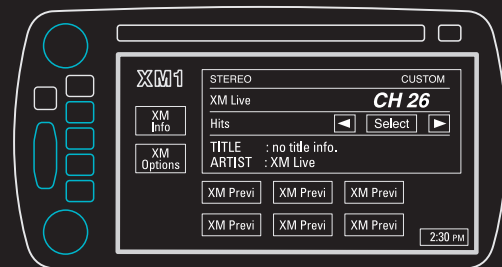
C.



D.

high tech

A.



A. XM® SATELLITE RADIO

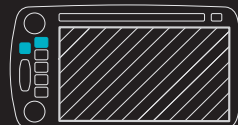
Hovering in geosynchronous earth orbit, XM satellites beam down over 150 channels of clear, digital-quality sound into your Rendezvous. Over 800 terrestrial repeaters fill in the signal whenever the line of sight with a satellite is lost. XM delivers 67 channels of 100% commercial-free music, plus the best in news, sports, talk, comedy and XM Instant Traffic & Weather. And you can receive the signal in all 48 coast-to-coast states. That's the attraction of XM. And that's why it's available on Rendezvous. Plus, now you get three trial months of service with factory-installed XM without any contract or obligation.

XM is available only in the 48 contiguous United States. Service fees extra. Visit gm.xmradio.com for details.

B. DVD ENTERTAINMENT SYSTEM

This available DVD entertainment system has the capability of playing studio quality audio/video in both CD-audio and DVD formats. There's a flip-down seven-inch screen utilizing a color active-matrix liquid-crystal display; two wireless infrared headphones and an infrared remote control for rear-seat activation; video and audio jacks for camcorder playback; ports for complete gaming capability; and even a parental switch on the front of the unit for stopping play and muting sound. You're welcome to use it occasionally just to make sure the kids in back are still capable of human conversation.

D.



C. ONSTAR®

OnStar is a factory-installed safety and security system that helps keep you protected and connected on the road. Using global positioning satellites to locate your vehicle, a live, specially trained Advisor is there to help you with something as major as an air bag deployment or as minor as a lockout. With OnStar, you have access to OnStar Hands-Free Calling, a voice-activated calling feature, so you can stay better connected on the road. If your air bags deploy, OnStar receives a signal and will try to contact you to see if you need help. If you need emergency assistance, OnStar will contact a nearby emergency service provider with your request for help. If you have a flat, are out of gas, or need a tow, an Advisor is ready to help there too. OnStar can also work with police to attempt to locate your vehicle if it's stolen, in most cases send a signal to unlock your doors if you're locked out, or run GM® Goodwrench® remote diagnostics if your Check Engine light comes on. With OnStar, you'll have peace of mind knowing you've done all you can to protect your family and prepare for whatever comes down the road.

OnStar Hands-Free Calling (HFC) requires an HFC-enabled vehicle, existing OnStar service contract and prepaid calling minutes, and is not available in Alaska and some other markets. Calls may be made to the U.S. and Canada only. OnStar voice recognition system may not work with some voices.

OnStar services require vehicle electrical system (including battery), wireless service and GPS satellite signals to be available and operating for features to function properly. OnStar acts as a link to existing emergency service providers. Subscription Service Agreement required. Call 1-888-4ONSTAR (1-888-466-7827) or visit onstar.com for OnStar's Terms and Conditions, Privacy Policy and system limitations and details.

D. GPS/DVD NAVIGATION SYSTEM

Imagine your Rendezvous reading the signals coming from at least three global positioning satellites in high earth orbit, and using those signals to compute your exact position on the planet, give or take a few feet. Now imagine that data being fed into a sophisticated DVD-based navigation program that can show you exactly where you are on a virtual map sent to a screen on the instrument panel, and allow you to watch your position on the map move as you move down the road. That's what Rendezvous' available GPS/DVD navigation program can do. Its database also contains information that allows the system to suggest best routes to your destination, as well as the locations of gas stations, restaurants and points of interest along the way. And to keep the information current, two annual updates are included.

[PLATE 12] DVD entertainment system. It handles CDs and DVDs, has jacks for camcorder playback and ports for gaming. That's entertainment. Available on Rendezvous CXL and CXL Plus.



[PLATE 11] GPS/DVD navigation system. It can tell you exactly where you are and how to get where you want to go. Available on Rendezvous CXL and CXL Plus.

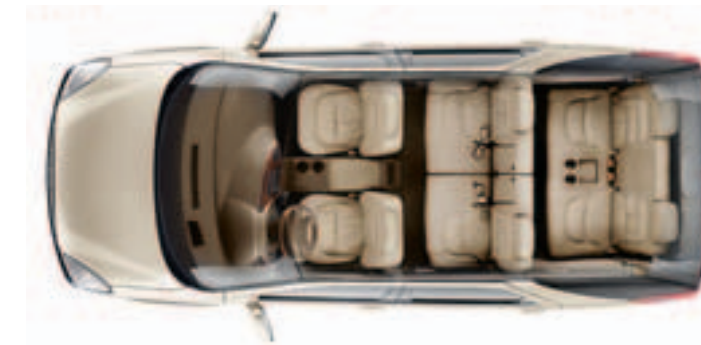
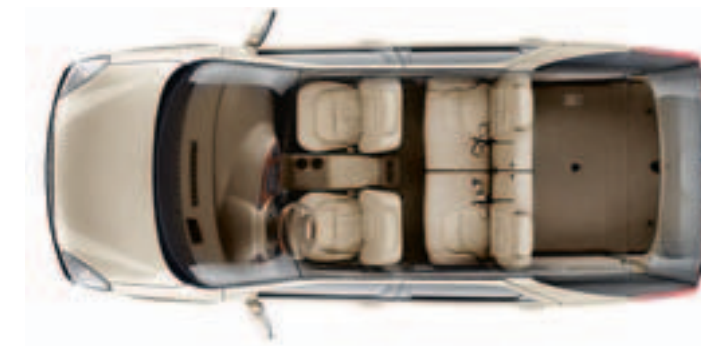


[PLATE 13] OnStar. This advanced information link (see column on facing page) is standard on Rendezvous for helpful assistance 24/7/365.



[PLATE 14] Rendezvous CXL in Cappuccino Frost Metallic. Shown with available equipment.

[PLATE 16] Five-, six- or seven-passenger seating is available, so you can outfit Rendezvous just the way you want it. Go configure.



[PLATE 15] With available six-passenger seating, second-row passengers enjoy reclining captain's chairs.



[PLATE 17] Folding second- and available third-row seats give you generous load space. The second-row seats remove easily to give you over 108 cubic feet for cargo. Cargo and load capacity limited by weight and distribution.

Quietly, Buick has taken its place among the world leaders in quality on some important measures. We've been recognized by industry experts. Our higher standards have been noted throughout the automotive press. Some of our key assembly plants have won prominent awards.

But we know that the difference between a car you like and a car you love isn't only about quality design and construction. It's also about a quality driving experience.

That's why, beginning with our 2006 models, every Buick we craft will come with these premium amenities:

- QuietTuning — a Buick-pioneered process that's designed to help reduce noise at its source, block the noise path and absorb noise. All to transform the cabin into a sanctuary from the outside world.
- OnStar* — a safety and security system that helps keep you protected and connected on the road. From a minor inconvenience to a major collision, a live, trained Advisor is there to help.
- A new 4 year/50,000 mile vehicle warranty** — premium coverage that is solid evidence of how confident we are in the quality of the design, engineering, assembly and craftsmanship of our vehicles.

For enhanced control on the road, every Buick model will offer either StabiliTrak — Stability Control System, or all-wheel drive. Some models will offer both.

And that's only the beginning. Our commitment to quality will continue to permeate every aspect of the creation of our vehicles. Every year. Every discipline. Every Buick.

That's our commitment to you.

*Visit onstar.com or call 1-888-4ONSTAR (1-888-466-7827) for system limitations and details.

**Whichever comes first. Limited warranty. See dealer for details.

The special rewards of driving a Buick





Frost White (50)
Interior: Neutral
Gray



Cappuccino Frost Metallic (97)
Interior: Neutral
Lower Accent: Antique Bronze Metallic⁽¹⁾



Platinum Metallic (67)
Interior: Gray
Lower Accent: Dark Platinum Metallic⁽¹⁾



Neutral Cloth



Cashmere Metallic (15)
Interior: Neutral



Blue Frost Metallic (20)
Interior: Neutral
Gray



Sagemist Metallic (23)
Interior: Neutral



Gray Cloth



Cardinal Red Metallic (63)
Interior: Neutral
Gray



Black Onyx (41)
Interior: Neutral
Gray



Neutral Leather Trim



Antique Bronze Metallic⁽¹⁾
Lower Accent



Dark Platinum Metallic⁽¹⁾
Lower Accent



Gray Leather Trim



Neutral Sueded Fabric Insert⁽¹⁾

⁽¹⁾Only available on Rendezvous CXL and CXL Plus. at extra cost. ⁽²⁾Only available with Cappuccino Frost Metallic. ⁽³⁾Only available with Platinum Metallic



17" Deluxe Wheelcover



17" Eight-Spoke Aluminum Wheel



17" Chrome-Tech Aluminum Wheel

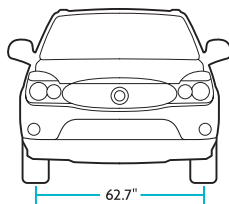


17" Ten-Spoke Aluminum Wheel

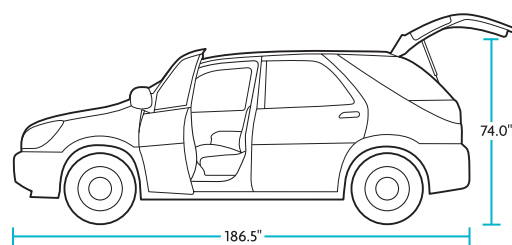


17" Chrome-Plated Aluminum Wheel

INTERIOR FEATURES	CX	CX PLUS	CXL	CXL PLUS
S Standard A Available — Not available				
Air bags				
— driver and front passenger, frontal dual-stage inflation with right front passenger sensing	S	S	S	S
— driver and front passenger, seat-mounted side-impact (included on CX models with AWD, requires ABS brakes with FWD)	A	A	S	S
Air conditioning — single-zone manual	S	—	—	—
— dual-zone manual climate control	—	S	—	—
— dual-zone automatic climate control	—	—	S	S
Audio systems				
— ETR AM/FM stereo with seek/scan, digital clock, RDS display, Theftlock,® CD, auto tone control, speed-compensated volume and six speakers	S	S	—	—
— ETR AM/FM stereo with seek/scan, digital clock, RDS display, Theftlock, cassette, CD, auto tone control, speed-compensated volume and eight speakers	—	A	S	S
— ETR AM/FM stereo with seek/scan, digital clock, RDS display, Theftlock, in-dash six-disc CD, auto tone control, speed-compensated volume and eight speakers	—	—	A	A
— ETR AM/FM stereo with seek/scan, digital clock, RDS display, Theftlock, CD, touch-screen GPS/DVD navigation system, auto tone control, speed-compensated volume and eight speakers (not available with in-dash six-disc CD)	—	—	A	A
— Rear-seat audio controls, includes two head-phones and jacks, separate volume controls, source selection, volume and radio preset buttons	—	A	S	S
— XM® Satellite Radio (activation and service fees extra; not available in Alaska or Hawaii)	—	A	A	S
Cargo storage system — three covered compartments (not available with six- or seven-passenger seating)	—	S	S	—
Center console — includes dedicated cell phone storage, two power outlets, two cup holders, lockable storage with CD holder, plus lower storage underneath	S	S	S	S
Child seat anchors — upper and lower LATCH system for compatible child safety seats on outboard second-row passenger positions	S	S	S	S
Child security door locks — rear doors	S	S	S	S
Cruise control	S	S	S	S
Driver Information Center — includes trip computer, low oil, coolant, fuel reminders and oil life monitor	—	S	S	S
DVD entertainment system — overhead mounted (not available with power sunroof)	—	—	A	A
EyeCue® head-up windshield display	—	—	A	A
Interior accents — Mahogany wood-accented steering wheel and wood-toned accents on doors and instrument panel	A	A	S	S
Instrumentation — full analog cluster with fuel, temperature, tachometer and speedometer	S	S	S	S
Lights — front- and second-row reading/courtesy and cargo area	S	S	S	S
OnStar® — includes one-year Safe & Sound Plan*	S	S	S	S
PASS-Key® III — passive theft-deterrent system	S	S	S	S

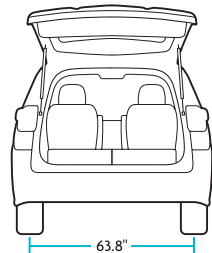


62.7"

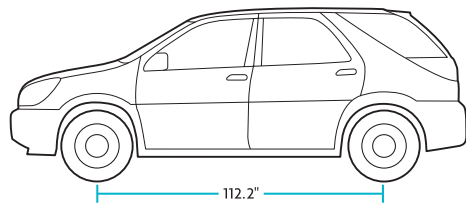


186.5"

74.0"



63.8"



112.2"

INTERIOR FEATURES (continued)	CX	CX PLUS	CXL	CXL PLUS
Power door locks	S	—	—	—
— programmable	—	S	S	S
Power windows — include driver express-down and passenger lockout feature	S	S	S	S
QuietTuning™	S	S	S	S
Remote keyless entry — includes instant alarm, perimeter lighting and security feedback	S	S	S	S
Retained accessory power — allows accessories to be operated for 10 minutes or until a door is opened	S	S	S	S
Safety belts — lap and shoulder belts for all seating positions	S	S	S	S
Seats				
— cloth	S	S	—	—
— leather-appointed (available third-row seat is vinyl covered)	—	A	S	S
— leather-appointed front- and second-row captain's chairs with premium sueded fabric insert (Neutral interiors only)	—	—	A	A
— five-passenger seating; includes front reclining bucket seats with lumbar adjustment, removable second-row 50/50 reclining flip-and-fold split-bench seat with storage armrests, fore and aft controls and cup holders	—	A	A	A
— six-passenger seating; includes front reclining bucket seats with lumbar adjustment, removable second-row reclining and folding captain's chairs and third-row folding bench seat with cup holders	—	A	A	A
— seven-passenger seating; includes front reclining bucket seats with lumbar adjustment, removable second-row 50/50 reclining flip-and-fold split-bench seat with storage armrests, fore and aft controls, cup holders and third-row folding bench seat with cup holders	A	A	S	S
— power seat adjuster, six-way driver	A	A	S	S
— power seat adjuster, six-way front passenger (requires leather-appointed seats)	—	A	S	S
— heated front seats (requires memory seat)	—	—	A	S
— memory seat and mirrors; includes two programmable settings for driver seat and outside rearview mirrors (requires heated seats)	—	—	A	S
Steering wheel — leather-appointed with tilt feature	S	S	—	—
— leather-appointed with Mahogany wood accent; includes tilt feature	A	A	S	S
— with mounted radio controls	A	A	S	S
Theft-deterrent system — includes alarm, starter interrupt and central unlocking feature	S	S	S	S
Universal Home Remote — programmable three-button function remote for garage door and more	A	A	S	S
Visor vanity mirrors — covered with driver-side lighting feature	S	S	—	—
— driver and passenger, covered with lighting feature	—	—	S	S
EXTERIOR FEATURES				
Deep-tinted glass — rear-side and liftgate	S	S	S	S
Fog lamps	S	S	S	S
Headlamps — with daytime running lamps and Twilight Sentinel®	S	S	S	S

EXTERIOR FEATURES (continued)	CX	CX PLUS	CXL	CXL PLUS
Mirrors — dual black fold-away power remote	S	S	—	—
— dual heated body-color fold-away power remote	—	—	S	S
Power sunroof — includes sunshade and mini overhead console (not available with DVD system)	A	A	A	A
Roof rack crossbows — black, adjustable	A	A	A	A
Tires — P225/60R17 all-season steel-belted radial	S	S	S	S
Ultrasonic rear parking assist	S	S	S	S
Wheels				
— 17" steel wheel with deluxe wheelcover	S	—	—	—
— 17" eight-spoke aluminum	A	S	S	—
— 17" Chrome-Tech aluminum	—	A	A	—
— 17" ten-spoke aluminum (requires 3.6L engine)	—	—	A	S
— 17" chrome-plated aluminum (requires 3.6L engine)	—	—	A	A
Windshield wipers — two-speed with variable delay	S	S	S	S
— rear wiper with washer	S	S	S	S
MECHANICAL FEATURES				
Brakes				
— four-wheel disc	S	S	S	S
— four-wheel anti-lock (included on CX models with AWD)	A	A	S	S
Drive type				
— front-wheel drive	S	S	S	S
— all-wheel drive, fully automatic on-demand system	A	A	A	A
Engine				
— 3.5L 3500 V6	S	S	S	—
— 3.6L 3600 VVT DOHC V6	—	—	A	S
Engine block heater	A	A	A	A
Steering				
— power assisted rack-and-pinion	S	S	S	S
Suspension				
— front independent MacPherson strut with coil springs and anti-roll bar	S	S	S	S
— rear independent short- and long-arm design with monotube shocks, coil springs and anti-roll bar	S	S	S	S
Tire inflation monitor — requires ABS brakes and traction control	—	A	S	S
Traction control — full-range (front-wheel drive models only, requires ABS brakes)	A	A	S	S
Transmission — four-speed electronically controlled automatic with overdrive	S	S	S	S
Trailer Towing Package — includes wiring harness, engine oil cooler, high-output alternator, heavy-duty engine cooling system, rear suspension with automatic rear level control and auxiliary air compressor outlet. Does not include draw bar, hitch pin and retainer clip, hitch ball and nut or hitch box cover. (These items may be ordered through your dealer.)	—	A	A	A

*OnStar services require vehicle electrical system (including battery), wireless service and GPS satellite signals to be available and operating for features to function properly. OnStar acts as a link to existing emergency service providers. Subscription Service Agreement required. The U.S. Federal Communications Commission (FCC) ruled that wireless carriers will no longer be required to support the analog wireless network beginning in 2008. As of January 1, 2008, OnStar plans to offer service only through equipment that operates on the digital network which may require the purchase of a system upgrade for eligible vehicles. Call 1-888-4ONSTAR (1-888-466-7827) or visit onstar.com for OnStar's Terms and Conditions, Privacy Policy and system limitations and details.

ENGINE	CX	CX PLUS	CXL	CXL PLUS
Type	3.5L SFI V6			
Horsepower	195 @ 5600 rpm			
Torque	215 @ 4000 rpm			
EPA estimated mpg, city/hwy				
— front-wheel drive	19/26			
— all-wheel drive	18/23			
Type	3.6L VVT DOHC V6			
Horsepower	242 @ 6000 rpm			
Torque	232 @ 3500 rpm			
EPA estimated mpg, city/hwy				
— front-wheel drive	18/27			
— all-wheel drive	18/25			

CAPACITIES	
Cargo volume (cu. ft.):**	
— behind third-row seat/second-row seat	18.1/54.5
— second- and third-row seats removed	108.9
Fuel tank (approx. gal.)	18
Base curb weight (lbs.)	
— front-wheel drive	4,096
— all-wheel drive	4,272
Maximum trailer weight with available Trailer Towing Package (lbs.) ¹	3,500

EXTERIOR DIMENSIONS (inches)	
Wheelbase	112.2
Length	186.5
Width	73.6
Height	69.1
Track (front/rear)	62.7/63.8
Load floor height	27.5
Front step-in height	16.4
Tailgate height	74.0

INTERIOR DIMENSIONS (inches)	front	second/third
Legroom	40.5/39.0/34.6	
Headroom	40.9/40.1/37.5	
Shoulder room	58.7/58.7/48.5	
Hip room	61.1/61.1/48.3	

**Cargo and load capacity limited by weight and distribution. ¹Maximum trailer weight ratings are calculated assuming a base vehicle, except for any options necessary to achieve the rating, plus driver. The weight of other optional equipment, passengers and cargo will reduce the maximum trailer weight your vehicle can tow. See your dealer for additional details.

IMPORTANT WORDS ABOUT THIS BROCHURE. We have tried to make this brochure comprehensive and factual. We reserve the right, however, to make changes at any time, without notice, in prices, colors, materials, equipment, specifications, models, and availability. Specifications, dimensions, measurements, ratings and other numbers in this brochure and other printed materials provided at the dealership or affixed to vehicles are approximates based upon design and engineering drawings and prototypes and laboratory tests. Your vehicle may differ due to variations in manufacture and equipment. Since some information may have been updated since the time of printing, please check with your Buick dealer for complete details. Buick reserves the right to lengthen or shorten the model year for any product for any reason, or to start and end model years at different times.

New Vehicle Limited Warranty. This warranty is for GM vehicles registered in the USA. See your Buick dealer for terms and conditions. **Covered for 4 years/50,000 miles (whichever comes first):** The complete vehicle • Tires • Towing to your nearest Buick dealership • Cosmetic corrosion resulting from defects • Repairs made to correct any vehicle defect • No charge for most warranty repairs **Covered for 6 years/100,000 miles (whichever comes first):** Rust-through corrosion

Corrosion Protection. Buick vehicles are designed and built to resist corrosion. All body and sheet metal components are warranted against rust-through corrosion for six years or 100,000 miles, whichever comes first. Application of additional rust-inhibiting materials is not required under the corrosion coverage and none is recommended. See your Buick dealer for terms of this limited warranty.

An Important Note About Alterations and Warranties. Installations or alterations to the original equipment vehicle (or chassis) as distributed by General Motors are not covered by the General Motors New Vehicle Limited Warranty. The special body company, assembler, equipment installer or upfitter is solely responsible for warranties on the body or equipment and any alterations (or any effect of the alterations) to any of the parts, components, systems or assemblies installed by GM. General Motors is not responsible for the safety or quality of design features, materials or workmanship of any alterations by such suppliers.

Updated Service Information. Buick dealers receive useful service bulletins about Buick products. You may purchase them from Helm Incorporated by calling 1-800-551-4123 or by visiting www.helminc.com.

Assembly. Buick vehicles and their components are assembled or produced by different operating units of General Motors, its subsidiaries or suppliers to GM worldwide. We sometimes find it necessary to produce Buick vehicles with different or differently sourced components than originally scheduled. Since some options may be unavailable when your vehicle is assembled, we suggest that you verify that your vehicle includes the equipment you ordered or, if there are changes, that they are acceptable to you.

Engines. Buick products are equipped with engines produced by GM Powertrain or other suppliers to GM worldwide. The engines in Buick products may also be used in other GM makes and models.

A Note About Child Safety. Always use safety belts and proper child restraints, even in vehicles equipped with air bags. Even with the Passenger Sensing System, children are safer when properly secured in a rear seat. Never place a rear-facing infant restraint in the front seat of any vehicle equipped with an active air bag. See your vehicle Owner's Manual and child safety seat instructions for more information.

ENHANCE YOUR OWNERSHIP EXPERIENCE. The Owner Center at My GMLink is a free online service that helps you make the most of your vehicle ownership.

- Sign up for e-mail reminders about service visits
- Keep an online history of services performed
- Read your Owner's Manual, warranty, and more, online
- Receive the recall notices that apply only to your vehicle
- Watch do-it-yourself videos and much more

Register today at MYGMLink.com

GM, the GM Logo, Buick, the Buick Logo, OnStar, the OnStar Emblem, QuietTuning and the slogans, emblems, vehicle model names, vehicle body designs and other marks appearing in this brochure are the trademarks and/or service marks of General Motors Corporation, its subsidiaries, affiliates or licensors. The XM name and related logos are registered trademarks of XM Satellite Radio, Inc.