

2 0 0 2



Oldsmobile.

GET IN
AN OLDSMOBILE

BACKED BY



Each of the five Oldsmobile vehicles shares a common strand of automotive DNA. You can see the family resemblance in the tautly drawn lines. And you'll feel it from the first turn of the wheel. Responsive engines. Agile suspensions. Smooth road manners. An unexpected level of sophistication. Whatever your choice, Oldsmobile has five unique ways to move you.

BRAVADA 3

AURORA 9

ALERO 15

INTRIGUE 21

SILHOUETTE 27

BRAVADA

The 2002 Bravada has arrived to disprove a few long-held notions about SUVs being rude, crude and thirsty for fuel. Bravada is simply designed to be the most powerful, best-mannered and smoothest-riding SUV in its class.



Bravada in Black Onyx. Shown with available equipment.

B R A V A D A

Bravada's 4200 Vortec engine is not just completely new, it's designed to be the most technologically advanced engine in its class. As proof, from six cylinders it produces a breathtaking 270 hp; it has the **MOST HORSEPOWER OF ANY ENGINE IN ITS CLASS**,^x beating every competing V8.^x That's efficient design. In addition, the engine is inherently smooth and made even smoother by a host of technological innovations usually reserved for high-priced luxury sedans.

^xExcludes other GM models.



SILKY POWER

Bravada's innovative inline six is inherently smooth and features a DOHC, four-valve design for improved breathing and power production.



SMOOTH RIDE

The electronic rear air suspension system provides the right balance of a smooth and controlled ride. The load-leveling system automatically adjusts ride height.



PRECISE HANDLING

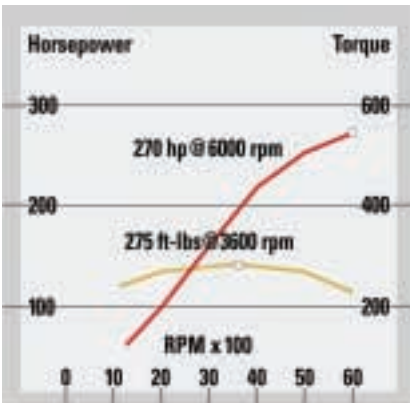
The power rack-and-pinion steering provides precise on-center feel for excellent directional stability, especially at highway speeds. It also reduces the turning circle to a trim 36.4 ft.

DON'T SETTLE FOR BEING CONNECTED TO THE ROAD. GLUE YOURSELF TO IT.

Think of Bravada's adaptive traction systems almost as industrial adhesive in regular or extra strength.

The 2WD layout features an available **TRACTION CONTROL SYSTEM** with **LOCKING REAR DIFFERENTIAL** to help get you through slippery conditions. Traction control helps ensure the engine's power is never wasted in idle spinning of wheels. Wheel-speed sensors can detect rear-wheel slippage and automatically reduce engine power to help you retain control and directional stability.

But if you plan to drive under unpredictable weather conditions, or just want Bravada's ultimate in traction, the available **SMARTTRAK SYSTEM** may be the best choice. SmartTrak puts all four wheels to work, but only when they're needed. Under normal conditions, SmartTrak delivers power only to the rear wheels. But if conditions require it, all four wheels are driven to make the most of available traction.



For the kind of power you need for passing and towing, the engine produces 90% of peak torque from 1600 rpm all the way to 5600 rpm. While the 270 hp is impressive enough, the broad, flat torque curve is an eye-opener.



SAFETY

The standard dual frontal air bags are complemented by driver and front-passenger side-impact air bags to provide an added level of occupant protection in a moderate to severe side-impact collision.



TIME FOR A DVD

Bravada's new available DVD Entertainment System features a wide-screen monitor, two wireless headphones and a remote control.



REFINED STYLING

The outside rearview mirrors are boldly styled and have a standard defogger to enhance visibility. They also have available turn indicators, a memory recall and an Electrochromic feature on the driver's side that automatically reduces distracting glare.

YOU'LL LOVE BEING ON THE INSIDE OF PERFECTION.



Bravada with leather-trimmed seating in Pewter. Shown with available equipment.



Bravada's interior features standard 8-way power front seats and the available BOSE® premium music system.

Creating an interior experience that is designed to impress.



BRAVADA STANDARD FEATURE HIGHLIGHTS

Powertrain, Chassis and Suspension · Vortec 4200 DOHC inline 6-cylinder engine with variable exhaust valve timing · Electronic 4-speed automatic transmission with console shifter · 2WD · Fully-boxed ladder frame chassis · Independent front suspension with upper and lower control arms, coil springs, shock absorbers and stabilizer bar · 5-link Electronically Controlled Rear Air Suspension (ECAS) with automatic load leveling · Power rack-and-pinion steering · 4-wheel, internally ventilated disc brakes · 17-inch aluminum wheels · P245/65R17 Michelin® M+S Cross Terrain all-season radial tires (2WD) · Weight-distributing platform hitch · 7-wire electrical harness · Heavy-duty hazard warning flashers

Safety and Security · One-year OnStar® safety and security contract · Dual frontal air bags** · Front-seat side-impact air bags** · 3-point safety belts for all seating positions · 4-wheel Antilock Braking System · Brake/transmission shift interlock · Automatic programmable power door locks · Rear-door child-security locks · Vehicle theft-deterrent system · Automatic daytime running lamps · Battery-rundown protection · Retained accessory power · LATCH system for child restraints

Seating and Trim · Contour front bucket seats · 60/40 split-folding rear bench seat · Leather-trimmed seating areas and leather-wrapped steering wheel · 8-way power driver's and front passenger's seats · Driver's and front passenger's 4-way power lumbar adjustment · Steering wheel-mounted audio, temperature and Driver Information Center controls · Passenger-assist handles (four) · Cargo storage area · Carpeted front and rear floor mats

Comfort and Convenience · Dual-zone automatic climate control system with rear-seat fan controls · Personalization feature for two drivers · Remote-control keyless entry system · Programmable Driver Information Center · Universal garage door opener · Heated power outside foldaway mirrors · Electrochromic inside rearview mirror · Automatic headlamp control · TILT-Wheel adjustable steering column · Cruise control · Four power outlets · AM/FM stereo radio with Radio Data System (RDS), CD and cassette players and six speakers · Rear-seat audio controls · Air inflator · Diversity antenna

Exterior · Halogen headlamps · Foglamps · Cornering lamps · Solar-treated windshield and privacy glass in rear doors, rear quarters and tailgate · One-piece rear liftgate with separate liftglass · Rooftop luggage rack · Platform hitch · Trailer wiring plug-in

BRAVADA AVAILABLE FEATURE HIGHLIGHTS

· SmartTrak full-time all-wheel-drive system · Traction control with locking rear differential (2WD) · 17-inch polished aluminum wheels · P255/60R17 Michelin tires · DVD Entertainment System · Electrochromic heated outside mirrors with turn indicators and memory feature · Memory seats · Heated front seats with separate control for back cushion · In-dash 6-disc CD player · BOSE® Premium Music System with digital signal processing · TravelNote · Cargo cover · Cargo net · Power-operated sunroof with sliding sunshade · Rain-sensing wiper system · 4.10 enhanced towing axle

Interior Dimensions

Headroom, front/rear	40.3/39.8 in
Legroom, front/rear	43.1/38.3 in
Shoulder room, front/rear	58.4/58.4 in
Hiproom, front/rear	56.1/55.7 in

Exterior Dimensions

Wheelbase	113.0 in
Length	191.8 in
Width	72.0 in
Height	69.6 in

Powertrain

Engine	4.2 liter (256 cuin)	Fuel injection	Sequential port
Horsepower	270 @ 6000 rpm	Transmission	4-speed automatic
Torque (lb-ft)	275 @ 3600 rpm		



Bravada in Polo Green. Shown with available equipment.

*Call 1-800-ONSTAR-7 or visit www.onstar.com for system limitations and details. Premium service contract is available at additional cost.

**Always use safety belts and proper child restraints, even with air bags. Children are safer when properly secured in a rear seat. See Owner's Manual for more safety information.

AURORA



Agility. Remarkable agility. If those two words don't come to your mind after test-driving Aurora, you haven't been paying attention. In fact, it may just be one of the most sure-footed and responsive luxury sedans you're likely to encounter. With its solid unibody chassis, all-independent suspension and precise magnetic rack-and-pinion steering, Aurora gives luxury some new twists. And a few curves.

AN INTERIOR SO WELL-TAILORED, YOU'LL WONDER HOW THEY EVER GOT YOUR MEASUREMENTS.



Aurora 3.5 interior in Neutral with Dark Neutral Accents. Shown with available equipment.

*With standard leather-trimmed seating areas,
burled walnut accents and an available Navigation Radio,
Aurora surrounds you with luxury.*



A U R O R A

Part of what makes Aurora such a tenacious performer on curves is the **Enhanced Agility System**. Standard on the 3.5 and 4.0 Aurora, this system consists of an array of 19 components and systems that work in concert to provide instant response to the driver's input. From the perfectly weighted feel of the steering wheel to the optimized caster settings and engine refinements, the components that contribute to feeling connected to the road have been scrupulously enhanced.



FAST RESPONSE TO THE ROAD

As part of the Enhanced Agility System, the **lightweight aluminum suspension components** reduce unsprung weight and enhance suspension response. So when you turn the wheel into a corner, you'll get a fast, faithful reaction.



FEEL THE ROAD WITHOUT HEARING IT

Also part of the system are **4-wheel disc brakes with antilock braking** for strong, stable braking, **magnetic variable-assist power rack-and-pinion steering** for precision and ease of steering, **low-profile tires** and **optimized caster settings** for sure-footed cornering. Separate **suspension cradles** better isolate the cabin from road noise.



POWERFUL, RESPONSIVE ENGINES

For exceptional power and response both engines have a **center-feed induction system**, **high-swirl combustion chambers** and **low-friction roller cam followers**.

AURORA STANDARD FEATURE HIGHLIGHTS (3.5 & 4.0)

Powertrain and Chassis · 3.5-liter DOHC V6 engine with sequential fuel injection (3.5 only) · 4-speed electronic-shift transaxle with automatic overdrive · Stainless steel dual exhaust system · Unitized body structure · Independent strut front suspension with coil springs · Independent semi-trailing arm rear suspension with cast aluminum arms, lateral links and coil springs · Front and rear stabilizer bars · 4-wheel disc brakes · Magnasteer variable-assist power rack-and-pinion steering · 16-inch aluminum alloy wheels with Goodyear® P225/60R16H performance tires (3.5 only)



Standard features on 4.0 · 4.0-liter DOHC V8 engine with sequential fuel injection · 17-inch aluminum alloy wheels with Michelin® P235/55R17H performance tires · All-speed traction control · Precision Control System



Safety and Security · One-year OnStar* safety and security contract · Dual frontal air bags and front-seat side-impact air bags** · 3-point seat-mounted front safety belts · Rear outboard and center 3-point safety belts · Adjustable front and rear (outboard) shoulder belt guides · Rear child-seat upper tether anchors · 4-wheel antilock brakes · Rear child-security door locks · Daytime running lamps · Driver-controlled power window lockout · Pulse-type windshield wipers/washer · Front and rear foglamps · Self-aligning front head restraints

Driver Controls · Full instrumentation · Gated console-mounted shifter · TILT-Wheel adjustment · Cruise control · Power trunk and fuel filler releases · Backlit switches

Interior · Contour front bucket seats · Driver-side 8-way power seat with power lumbar adjustment · Rear bench seat with integrated headrests, center fold-down armrest and trunk pass-through · Burled walnut center console and door trim · Leather-trimmed seating areas · Leather-wrapped steering wheel · Driver and front passenger sun visors · Automatic climate control · Outside temperature display · Cabin air filtration system with replaceable cartridge · Driver information system · Power windows with driver/passenger auto-down · Remote-control keyless entry system · Steering wheel touch controls · Illuminated entry/exit package · Front and rear reading lamps · Dual illuminated vanity mirrors · Automatic headlamp control · Auxiliary power outlets

Standard features on 4.0 · Rear-seat storage armrest with cupholders · 8-way power front passenger seat with power lumbar adjustment · Automatic dual-zone climate control with rear seat heating/cooling · Driver seat and outside mirrors memory feature · Universal garage door opener

Audio System · AM/FM stereo and CD/cassette player · 6-speaker Dimensional Sound system · Diversity antenna system

Exterior · Halogen headlamps with projector-type low beams · Solar Ray tinted glass · Body-color side moldings and door handles · Chrome-tipped exhaust outlets

Standard features on 4.0 · Automatic moisture-sensitive windshield wipers

AURORA AVAILABLE FEATURES (See your dealer for details.)

· Power sunroof · Heated front seats · Navigation Radio · BOSE Premium Sound System · 12-disc CD changer

AURORA AVAILABLE PACKAGES

The Passenger Comfort, All-weather and Convenience Packages are standard on 4.0 and available on 3.5. The Gold Graphics Package and the BOSE Premium Sound System are available on both models.

Passenger Comfort Package · 8-way power front passenger seat with power lumbar adjustment · Rear storage armrest with cupholders · Automatic dual-zone climate control

All-weather Package · All-speed traction control · Precision Control System (Passenger Comfort Package required)

Convenience Package · Driver seat and outside mirrors memory feature · Automatic moisture-sensitive windshield wipers · Auto-dimming Electrochromic rearview mirror with compass · Universal garage door opener

Gold Graphics Package · Gold finish on hood emblem and rear panel script

Interior Dimensions	3.5	4.0	Exterior Dimensions	3.5	4.0
Headroom, f/r	38.6/37.7 in	38.6/37.7 in	Wheelbase	112.2 in	112.2 in
Legroom, f/r	42.5/38.0 in	42.5/38.0 in	Overall length	199.3 in	199.3 in
Shoulder room, f/r	58.9/58.4 in	58.9/58.4 in	Width	72.9 in	72.9 in
Hiproom, f/r	55.4/56.1 in	55.4/56.1 in	Height	56.7 in	56.7 in
			Curb weight	3686 lb	3803 lb

Powertrain	3.5	4.0
Engine	3.5 liter DOHC V6 (212 cu in)	4.0 liter DOHC V8 (244 cu in)
Horsepower	215 @ 5600	250 @ 5600
Torque (lb-ft)	230 @ 4400	260 @ 4400
Fuel injection	Sequential	Sequential
Transaxle ratio	3.29	3.71



Aurora 4.0 in Sterling with available chrome wheels.

See your dealer for complete details.

*Call 1-800-ONSTAR-7 or visit www.onstar.com for system limitations and details.

**Always use safety belts and proper child restraints, even with air bags. Children are safer when properly secured in a rear seat. See Owner's Manual for more safety information.

ALERO

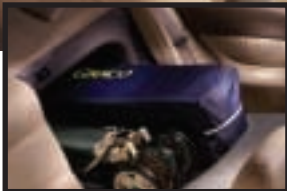
Alero adds an altogether more exhilarating dimension to everyday driving. That's probably why *Car and Driver* said, "Alero scores a 10 in our (overall) handling category."* Yet with a roomy interior and standard equipment that's extra cost or simply not available on the competition, there are no sacrifices in your quest for comfort, versatility, safety and value in one fun-to-drive package.



Alero GLS in Polo Green. Shown with available equipment.

*Comparison of vehicles under \$20,000. Alero GL equipped with FE3 suspension option.

YOU'LL RUN OUT OF ROAD BEFORE YOU'LL RUN OUT OF COMFORT.



Alero GLS Sedan with leather-trimmed seating in Neutral.

*With available leather-trimmed seating areas,
room for five and an airy, well-appointed cabin, Alero
takes the dull out of everyday driving.*



A L E R O

What makes Alero more fun? We call it the **Active Response System**, and it helps you grab hold of any corner you choose. Sixteen individual features work together to actively connect you to the road with more refined manners, more agile responses and a more accurate feel for the car. That translates to you as nimble handling to help hug hairpin turns. A smooth, forgiving ride to soften up rough spots. Swift, refined power right when you want it. The tools you need to dial up the fun factor and your driving confidence, whether you're stopping, starting or steering.

CONFIDENCE-INSPIRING BRAKING

Alero's responsive **4-wheel Disc Brakes** provide firm, positive braking with reduced fade.

STOP AND GO WITH CONTROL

The **Antilock Braking System** helps you maintain steering control when braking hard on slick roads. Under acceleration, **All-speed Traction Control** enhances traction by reducing wheelspin on most slippery surfaces.

PRECISION STEERING

Direct-mounted Rack-and-Pinion Steering provides a feeling of precision, no wandering or drifting off course.

And for hands-on control, the **Thick Steering Wheel** is easy to grasp for a feeling of confidence right down to your fingertips.

BORN TO BE NIMBLE

A **4-wheel Independent Suspension** lets each wheel respond individually to ensure nimble handling and a smooth ride. **Low Mass Aluminum Components** further help keep the tires planted to the pavement for a smooth, road-hugging ride.



ALERO STANDARD FEATURE HIGHLIGHTS FOR ALL MODELS

Powertrain and Chassis · Front-wheel drive · Rigid body structure · 4-wheel independent suspension · 4-wheel disc brakes · Rack-and-pinion steering · Low-profile P215/60R15 radial touring tires · Touring suspension

Safety and Security · Safety cage construction · Dual frontal air bags* · 3-point outboard safety belts · Rear outboard adjustable houlder belt guides · LATCH system for child restraints · All-speed traction control · 4-wheel antilock brakes · Brake/transmission shift interlock (automatic transmission) · Daytime running lamps with automatic lamp control · Pulse wipers · Front and rear electric-rear window defoggers · Automatic power door locks with lockout prevention · Rear-door child-security locks (Sedan only) · Full interior courtesy lighting with illuminated entry/exit · PASSLock II theft-deterrent system · Battery-rundown protection · Emergency trunk release

Seating and Driver Controls · Driver-oriented controls with dash-mounted ignition and hazard switches · Full instrumentation · Contoured, reclining front bucket seats · Adjustable steering column · Center floor console · Power trunk release · 70/30 split-folding rear seat

Comfort and Convenience · Air conditioning · Rear-seat heat ducts · Cruise control · AM/FM stereo/CD · Solar-coated tinted glass with UV protection · Extensive interior storage · Front and rear cupholders · Easy-entry feature (Coupe only) · Last-door-closed locking feature · 12-volt auxiliary power outlet · Sun visors with covered vanity mirrors · Ashtray and lighter · Carpeted floor mats

Exterior · Rust- and dent-resistant steel body panels · 5-mph bumpers · Spring-away outside rearview mirrors (black on GX; body-colored on GL and GLS) · Rear window grid antenna · Stainless steel exhaust system



Alero GL Coupe in Ruby Red. Shown with available equipment.

*Always use safety belts and proper child restraints, even with air bags. Children are safer when properly secured in a rear seat. See Owner's Manual for more safety information.

ALERO MODEL-SPECIFIC FEATURE HIGHLIGHTS S - Standard/A - Available

	GX	GL1	GL2	GLS
2.2-liter DOHC 4-cylinder with electronic 4-speed automatic	S	S	A	–
3.4-liter SFI V6 with electronic 4-speed automatic	–	A	S	S
5-speed manual transmission (2.4-liter DOHC 4-cylinder)	A	–	A	–
Performance suspension with 16" performance tires	–	–	S	A
Foglamps	–	S	S	S
Cloth-trimmed seating areas	S	S	S	–
Leather-trimmed seating areas	–	–	–	S
Leather-wrapped steering wheel and shift knob	–	A	S	S
Driver's seat with power adjustable height and manual lumbar	–	S	S	–
6-way power driver's seat	–	A	A	S
Power windows with driver's auto-down	–	S	S	S
Remote-control keyless entry system	–	S	S	S
AM/FM stereo/cassette/CD, 8-speaker Premium Sound system	–	A ¹	A ¹	S
6-speaker Dimensional Sound system	S	S	S	–
15-inch aluminum wheels	–	A ²	–	–
16-inch painted aluminum wheels	–	–	S	–
16-inch polished aluminum wheels	–	–	–	S
Power sunroof with sliding glass panel	–	A ¹	A ¹	A
Rear decklid spoiler	–	A	S	S/A ³

Interior Dimensions	Sedan		Coupe		Exterior Dimensions	Sedan		Coupe	
Headroom, f/r	38.3/37.5 in	38.3/37.0 in	Wheelbase		107.0 in	107.0 in			
Legroom, f/r	42.1/36.3 in	42.1/36.2 in	Length		186.7 in	186.7 in			
Shoulder room, f/r	53.6/52.4 in	53.6/55.4 in	Width		70.1 in	70.1 in			
Hiproom, f/r	50.9/50.8 in	50.9/51.4 in	Height		54.5 in	54.5 in			
			Curb weight		3016 lb	2961 lb			
Powertrain	DOHC 4-cylinder				V6				
Engine	2.2 liter (134 cu in)				3.4 liter (207 cu in)				
Horsepower	140 @ 5600 rpm				170 @ 4800 rpm				
Torque (lb-ft)	150 @ 4400 rpm				200 @ 4000 rpm				
Fuel injection	Sequential port				Sequential port				
Estimated mileage city/highway	25/33 (manual); 24/32 (automatic)				20/29				

¹Requires Sun and Sound Package. ²Requires Sport Package. ³Standard on coupe and available on sedan. See your dealer for complete details.

INTRIGUE

Is it possible for a machine to inspire confidence? Can a car move you to start a collection of favorite roads? Can it motivate you to pursue destiny around every bend? If it's Intrigue by Oldsmobile, it will do all that and more. Its reflexes are precise. Its comfort soothes the mind and body. And the power of its award-winning 3.5-liter V6 engine might cause you to start your own frequent-driver club.

Intrigue GL in Sandstone. Shown with available equipment.

WHILE INTRIGUE TAKES CARE OF THE ROAD, IT TAKES EVEN BETTER CARE OF YOU.



Intrigue GL with leather-trimmed seating in Neutral.



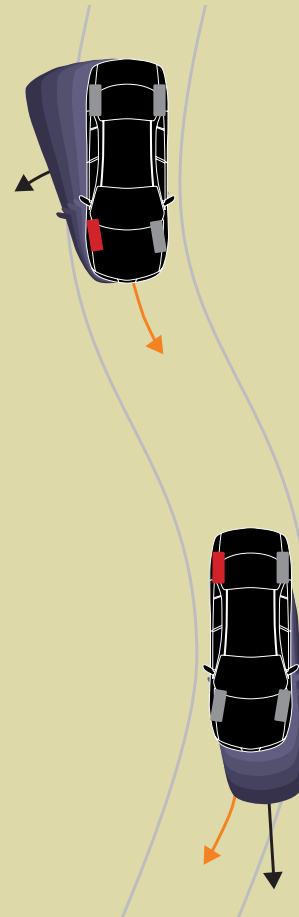
Intrigue's available leather-trimmed seating areas, supportive seats and a wealth of available features add a level of sophistication to its performance personality.

I N T R I G U E

Intrigue caresses its occupants with the same fervor it grips the road. Its inviting interior is specially equipped to promote a comfortably acute interplay between you and the asphalt. An electronic air-conditioning system with rear-seat heat ducts creates a soothing environment in which to explore the longer road home. And with available leather-trimmed front seats that embrace you in supportive comfort, you might find yourself more refreshed and relaxed at journey's end than at the start.

AWARD-WINNING PERFORMANCE

The 215-hp engine is among the most powerful in its class. Like a sprinter, the DOHC, 24-valve V6 excites with explosive performance. But like all champions, it always has extra strength in reserve, thanks to a broad, flat torque curve peaking at 230 lb-ft.

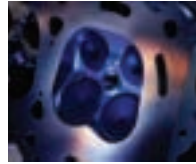


PRECISION CONTROL SYSTEM (PCS)

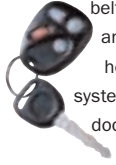
The available Precision Control System (PCS) enhances safety by working with Intrigue's inherently balanced performance. By monitoring steering angle, turning rate and lateral g's, the system can selectively apply any of the four brakes to help counteract a front- or rear-end slide. As the first midsize sedan to offer this advanced system, Intrigue is at the cutting edge of stability-enhancing design.

INTRIGUE STANDARD FEATURE HIGHLIGHTS FOR ALL MODELS

Powertrain and Chassis · 3.5-liter Twin-Cam V6 engine with electronic 4-speed automatic transmission · Hydraulic engine mounting system · Reduced-maintenance powertrain features · Front-wheel drive · 4-wheel independent suspension · 4-wheel disc brakes · Magnetic speed-sensitive variable-assist rack-and-pinion steering · Stabilizer bars, front/rear · 16-inch aluminum alloy wheels · P225/60R16 radial touring tires



Safety and Security · Safety-cage construction · Dual frontal air bags* · 3-point outboard safety belts with rear center lap belt · Rear outboard adjustable shoulder belt guides · 4-wheel antilock brakes · Brake/transmission shift interlock · Daytime running lamps · Halogen headlamps with automatic control · Cornering lamps · Variable-intermittent wiper system · Side window and electric rear window defoggers · Automatic programmable power door locks · Rear-door child-security locks · PASSLock II vehicle security system · Front door warning reflectors · Maintenance-free battery with battery-rundown protection



Interior · Contoured front bucket seats · Elevated “theater-style” rear bench seat with folding armrest · Full instrumentation · Center floor console · Dash-mounted ignition and hazard switches · 4-spoke steering wheel with adjustable steering column · Steering wheel-mounted cruise control with resume and acceleration features · Power trunk release · Electronic air conditioning · Rear-seat air ducts · Storage: front center armrest, locking glove box, driver’s personal compartment, dual front and rear cupholders, and map pockets in doors and front seatbacks · Full cut-pile carpeting in cabin · Carpeted front and rear floor mats · Assist grips for all outboard passengers · Lighting system: courtesy, glove box, trunk and reading lamps, plus illuminated entry/exit · Covered vanity mirrors · Visors with sunshade extenders · Power windows with driver’s-side auto-down · Auxiliary 12-volt power outlet · Retained accessory power · Air filtration system · AM/FM stereo radio with CD player · 4-speaker extended-range sound system

Exterior · “Liquid crystal” headlamps and taillamps · Tinted windows with solar-control windshield and rear window glass · Rear window grid radio antenna · Dual power foldaway outside mirrors (black on GX; body color on GL and GLS) · Gas-charged hood and non-intrusive trunk struts · Body-color side moldings



Intrigue GLS in Black Onyx. Shown with available Precision Sport Package.

*Always use safety belts and proper child restraints, even with air bags. Children are safer when properly secured in a rear seat. See Owner’s Manual for more safety information.

INTRIGUE MODEL-SPECIFIC FEATURE HIGHLIGHTS S - Standard/A - Available

Option Package Discounts. You can realize substantial savings with any of our option packages: GX with Driver Control Package = GX¹, GL with Premium Leather Package = GL², and GLS with Precision Sport Package = GLS³

	GX	GX ¹	GL	GL ²	GLS	GLS ³
Remote-control keyless entry system	–	S	S	S	S	S
Full-function traction control system	–	S	S	S	S	S
6-way power driver’s seat	–	S	S	S	S	S
Leather-wrapped steering wheel, armrest and shifter knob	–	S	S	S	S	S
60/40 split-folding rear seatback	A	A	S	S	S	S
AM/FM stereo with CD and cassette players	A	A	A	A	S	–
Foglamps	–	–	S	S	S	S
Steering wheel-mounted audio touch controls	–	–	S	S	S	S
Automatic dual-zone climate control system	–	–	S	S	S	S
Lighted visor vanity mirrors	–	–	S	S	S	S
Leather-trimmed seating areas	–	–	–	S	S	S
Heated front seats	–	–	–	S	S	S
Faux woodgrain interior accents ¹	–	–	–	–	S	S
OnStar**	–	–	–	–	S	S
Power sunroof with sliding/tilting glass panel	–	–	A ²	A ²	S	S
Rear decklid spoiler	A	A	A	A	–	S
Precision Control System (PCS)	–	A	A	A	–	S
16-inch chrome-plated aluminum alloy wheels	–	–	A	A	–	S
BOSE Premium Audio System	–	–	A ²	A ²	–	S

Interior Dimensions

Headroom, f/r	39.3/37.4 in
Legroom, f/r	42.4/36.9 in
Shoulder room, f/r	58.0/57.0 in
Hiproom, f/r	55.6/54.8 in

Exterior Dimensions

Wheelbase	109.0 in
Length	195.9 in
Width	73.6 in
Height	56.6 in
Curb weight	3434 lb

Powertrain

Engine	3.5 liter (212 cu in)	Fuel injection	Sequential port
Horsepower	215 @ 5600 rpm	Transaxle ratio	3.05 (3.29 with PCS)
Torque (lb-ft)	230 @ 4400 rpm	Estimated mileage	19 city/28 hwy

**One-year OnStar safety and security contract is standard. Call 1-800-ONSTAR-7 or visit www.onstar.com for system limitations and details. See your dealer for complete details. ¹Vehicles with pewter interior trim feature brushed sterling accents. ²Available only in Sun and Sound Package.



SILHOUETTE

This year, Silhouette has even more to make every journey as enjoyable as the destination. In addition to a new look for the front and rear, there's third-row stowable seating with a rear cargo convenience center on GLS and Premiere to enhance versatility. The standard OnStar[®] equipment adds to your peace of mind, while the Premiere entertainment system lets the rear passengers enjoy music or a video or play a video game.

FIRST-CLASS SEATING PLUS PLENTY OF ROOM FOR ALL YOUR CARRY-ONS.



Silhouette Premiere in Mocha Two-Tone leather trim.

The third-row stowable bench seat with the rear cargo convenience center, which is available on GLS and standard on Premiere, makes it easy to reconfigure Silhouette to handle a variety of cargo and passenger-carrying needs.

S I L H O U E T T E

Upscale, refined and always willing to please, Silhouette makes everyday errands and daily driving a breeze instead of a chore. With its wide variety of seating configurations, you can carry a combination of cargo and passengers with ample room for both. With the available third-row stowable bench seat, you also get a rear cargo convenience center that features hooks for grocery bags and secure storage for items you don't want shifting while driving. Clearly, Silhouette has options for any situation.



Premiere **ENTERTAINMENT SYSTEM**

The entertainment system on the Premiere model features a DVD player with remote control, LCD color monitor, input jacks for video games or camcorder and 4 pairs of wireless headphones.



ONSTAR

Standard on all models, the one-year OnStar* safety and security package is designed to enhance your security while on the road. In the U.S. and Canada, wherever a cellular connection can be made, OnStar can pinpoint your location and automatically alert an OnStar Advisor in case of an emergency.



VERSATRAK (AVAILABLE GLS AND PREMIERE)

It's nice to know that Silhouette utilizes fuel-economic front wheel drive when driving in normal everyday conditions. But it automatically shifts into all-wheel drive for more traction when road conditions change for the worse. You get the best of both worlds, without even touching a button!

*Call 1-800-ONSTAR-7 or visit www.onstar.com for system limitations and details.

SILHOUETTE STANDARD FEATURE HIGHLIGHTS FOR ALL MODELS

Safety and Security · One-year OnStar* safety and security contract · Safety-cage construction · Dual frontal and front-seat side-impact air bags** · 3-point front and rear outboard safety belts with front pretensioners, plus rear center lap belt · Front shoulder-belt height adjusters · Rear outboard adjustable shoulder belt guides (GL only) · 4-wheel antilock brakes · Brake/transmission shift interlock · Multi-function alarm and lighting system · Automatic programmable power door locks with lockout prevention · Sliding-door child-security locks · Daytime running lamps · Foglamps



Comfort and Convenience · Air conditioning · Cabin air filter · TILT-Wheel adjustable steering column · Cruise control · Overhead console · Storage: locking glove box, console bin (except Premiere), rear cargo area bins, and cupholders for all seating positions · Lighting: overhead console with map lights, rear dome/cargo lamp, dome lamp override switch, second-row reading lamps and third-row roof rail reading lamps · Dual power outlets and auxiliary 12-volt power outlet · Retained accessory power



Seating and Trim · Reclining contour front bucket seats with folding armrest · Second-row folding captain's chairs · Front- and second-row passenger-assist grips · Carpeted floor mats

Exterior · Rooftop luggage carrier · Solar-treated windshield · Deep tinted glass for rear-side, rear-quarter windows and tailgate · Concealed front wipers · Body-color side moldings · Front and rear splash guards · Dual sliding doors

Powertrain and Chassis · 3400 SFI V6 engine · Electronic 4-speed automatic transmission with overdrive · Front-wheel drive · Independent front MacPherson strut/rear twist axle and coil spring suspension · Reduced effort power rack-and-pinion steering · Maintenance-free battery · Stainless steel exhaust · Touring suspension



Silhouette Premiere in Black Onyx. Shown with available equipment.

SILHOUETTE MODEL-SPECIFIC FEATURE HIGHLIGHTS S - Standard/A - Available

	GL	GLS	Premiere
Full-function traction control system	A	A	A
Rear parking aid (shown left)	A ¹	S	S
Auxiliary rear-seat audio/climate controls	A	S	S
Driver Information Center	A	S	S
Universal garage door opener	A ²	S	S
AM/FM stereo radio with CD player	S	-	-
AM/FM stereo radio with CD and cassette players	A	S	S
AM/FM stereo radio with seek/scan tuning, in-dash 6-disc CD player	-	A	A
Tri-zone climate control system	-	S	S
Third-row 50/50 split-folding bench	S	S	A
Third-row stowable bench with rear cargo convenience center	-	A	S
Third-row captain's chairs	-	A	A
Leather-trimmed seating areas and steering wheel	-	S	S
8-way power front seats with driver-side memory	S	S	S
Heated front seats	-	A	S
Power-sliding passenger-side door	A	S	S
Power-sliding driver-side door	-	A	S
16-inch aluminum wheels	S	S	S
16-inch chrome wheels	-	A	A
Towing Package	A	A	A
Convenience Package	A	-	-
Security Package	A	-	-

Interior Dimensions

Headroom, f/m/r	39.9/39.3/38.9 in
Legroom, f/m/r	39.9/39.0/36.7 in
Shoulder room, f/m/r	59.8/61.9/59.6 in
First row walk-through	8.3 in

Exterior Dimensions

Wheelbase	120.0 in
Length	201.4 in
Width	72.2 in
Height	68.1 in
Curb weight	3948 lb

Powertrain

Engine	3.4 liters (207 cu in)	Fuel injection	Sequential port
Horsepower	185 @ 5200 rpm	Transmission	4-speed automatic
Torque (lb-ft)	210 @ 4000 rpm	Estimated mileage	19 city/26 hwy

¹Requires rear-seat audio and climate controls and power-sliding passenger-side door.

²Requires Driver Information Center. See your dealer for complete details.

*Call 1-800-ONSTAR-7 or visit www.onstar.com for system limitations and details. **Always use safety belts and proper child restraints, even with air bags. Children are safer when properly secured in a rear seat. See Owner's Manual for more safety information.



Silhouette



Aurora



A WORD ABOUT THIS CATALOG

We have tried to make this catalog comprehensive and factual. We reserve the right, however, to make changes at any time, without notice, in prices, colors, materials, equipment specifications, models and availability. Since information may have been updated since the time of printing, please check with your Oldsmobile dealer for complete details. Oldsmobile reserves the right to lengthen or shorten the model year for any product for any reason, or to start and end model years at different times.

©2001 GM Corp. All rights reserved. Printed in the U.S.A. 9/01. Alero, Bravada, Intrigue, Silhouette, Silhouette Premiere, Delco, PASSLock, Oldsmobile, the Oldsmobile emblem, the Oldsmobile nameplate, GM Protection Plan, General Motors Protection Plan Major Guard, MajorGuard and SmartTrak are registered trademarks of General Motors Corp. Vortec and Versatrak are trademarks of General Motors Corp. General Motors Protection Plan is a service mark of General Motors Corp. Magnasteer and TILT-Wheel are trademarks of Delphi Automotive Systems. OnStar and the OnStar button are trademarks of OnStar Corp. "Aurora" is used with permission of Hankook Tire. HomeLink is a registered trademark of Prince, a Johnson Controls Company. Printed on recyclable paper. ♻️



5 YEAR/60,000 MILE
General Motors Protection Plan