


2002  Oldsmobile

***BRAVADA***



What has a smooth ride, tight handling, silky power delivery and can tow more than its own weight?



BRAVA DA

RPM X 1000



Bravada in Black Onyx. Shown with available equipment.

## Surprised?

We thought you might be. The all-new 2002 Bravada has arrived to disprove a few long-held notions about SUVs being rude, crude and thirsty for fuel. Bravada is simply designed to be the **most powerful**, best-mannered and smoothest-riding SUV in its class. Its inline six-cylinder engine is bulging at the seams with **silky smooth power**. So much power, in fact, that it **outpowers every other engine** in its class including all V8s\*. The handling is so impressive, you'll wonder if someone poured glue on the roads. And the suspension is so smooth, the roads feel practically freshly paved. What's the secret to a fabulous ride? In a word – air. Bravada uses **rear air springs** because, when the goal is an easy alliance with the road, even a non-engineer can tell you air is infinitely smoother than steel.

[PERFORMANCE](#)   [HANDLING](#)   [STYLE & LUXURY](#)   [SAFETY](#)   [SPECIFICATIONS](#)



Bravada in Indigo. Shown with available equipment.



Bravada in Black Onyx. Shown with available equipment.

## P E R F O R M A N C E

- ENGINE
- ADAPTIVE TRACTION
- TRANSMISSION

The power is intoxicating. Please enjoy it in moderation.

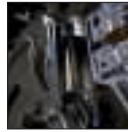
Bravada's 4200 Vortec engine is not just completely new, it's designed to be the most technologically advanced engine in its class. As proof, from six cylinders it produces a breathtaking 270 hp, more power than any other engine in its class.\* *That's* efficient design. In addition, the engine is inherently smooth and made even smoother by a host of technological innovations usually reserved for high-priced luxury sedans. Combine its two-fisted power and buttery smoothness, and you've got an engine that begs to be driven with exuberance. Like most things that exhilarate you, it's tempting to sample that power often. And it's definitely habit-forming. It may be difficult, but we urge you to exercise responsible self-control.





## PERFORMANCE

- ENGINE
- ADAPTIVE TRACTION
- TRANSMISSION



### Vortec: just another word for muscle.

The all-new 270-hp Vortec 4200 DOHC inline six-cylinder engine has just about all the power you could ever need, when you need it and how you need it. Sounds tough to do, but there's plenty of engine magic at work. To begin with, it has the **MOST POWER OF ANY ENGINE IN ITS CLASS,\*** beating every competing

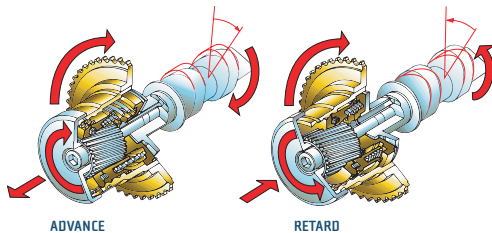
V8. That means plenty of power for passing, merging and accelerating.

While the engine gobbles up the road, it doesn't do the same with fuel.\*\* Thanks to the **ADVANCED COMBUSTION DESIGN**, the **VARIABLE EXHAUST VALVE TIMING SYSTEM** and the sophisticated **POWERTRAIN CONTROL MODULE**, the Vortec 4200

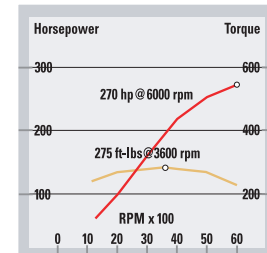
doesn't drink gas — it sips it.

Along with all that power and efficiency, Bravada's engine is one of the smoothest engines ever fitted to an SUV. Just how smooth? We had to develop a special **IGNITION INTERLOCK SYSTEM** that actually prevents the driver from trying to start the engine if it's already running.

With its combination of class-beating horsepower, fuel efficiency and impressive smoothness, the Vortec 4200 convincingly proves that six is far greater than eight.



To maximize power and torque without paying a penalty in fuel economy, the engine features a variable exhaust valve timing system that automatically advances and retards valve timing depending on operating conditions.



For the kind of power you need for passing and towing, the engine produces 90% of peak torque from 1600 rpm all the way to 5600 rpm. While the 270 hp is impressive enough, the broad, flat torque curve is an eye-opener.

Right> The Vortec 4200 inline six does away with traditional ignition coils with spark plug wires. In their place is an advanced direct ignition system that uses a separate coil located over each spark plug. This delivers the highest energy spark and the most precise timing available, increasing combustion efficiency and lowering emissions.

\*Based on available horsepower for 2001 vehicles in GM mid-size SUV segmentation. Excludes other GM models. \*\*EPA estimated fuel economy 16/22 city/hwy [2WD] and 15/21 city/hwy [AWD].



Bravada in Pewter. Shown with available equipment.



Bravada in Jewelcoat Red. Shown with available equipment.



## Don't settle for being connected to the road. Glue yourself to it.

Think of Bravada's adaptive traction systems almost as industrial adhesive in regular or extra strength. Whether you choose two-wheel drive with available traction control\* or SmartTrak full-time automatic all-wheel drive, Bravada goes beyond connecting you to the road. It will seem that you're practically glued to it. And it helps you take firm control of the road surfaces you're likely to encounter.

The 2WD layout features an available TRACTION CONTROL SYSTEM with LOCKING REAR DIFFERENTIAL to help get you through slippery conditions. Traction control helps ensure the engine's power is never wasted in idlespinning of wheels. Wheel-speed

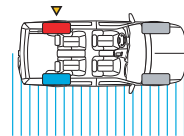
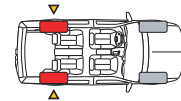
sensors can detect rear-wheel slippage and automatically reduce engine power to help you retain control and directional stability.

But for some, even that level of control and stability may not be enough. If you plan to drive under unpredictable weather conditions, or just want Bravada's ultimate in traction always on call, the available SMARTTRAK SYSTEM may be the best choice. SmartTrak puts all four wheels to work, but only when they're needed. Under normal conditions, SmartTrak delivers power only to the rear wheels. But if conditions require it, all four wheels are driven to make the most of available traction.

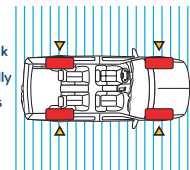
Delivering that mighty power and torque to the ground is a refined ELECTRONICALLY CONTROLLED 4-SPEED AUTOMATIC TRANSMISSION. It's as smooth-shifting and seamless as the engine is powerful.

To help provide the ideal combination of traction, handling and road feel, Bravada has PREMIUM MICHELIN® CROSS TERRAIN™ TIRES designed for the unique requirements of an SUV. Break out the adhesive dispensers.

On a good road surface, SmartTrak drives the rear wheels only. This mode will be selected for economy in most daily driving. The moment slippage is detected, SmartTrak activates in just .25 seconds.



When all four wheels are on a slick surface and SmartTrak senses front-to-rear slippage, all-wheel drive is automatically engaged to help maximize the available traction. It stays in that mode until slippage is no longer detected.



When the road conditions change, SmartTrak is ready. If one rear wheel hits an unexpected puddle, generating side-to-side slippage, the locking rear differential limits wheelspin at that wheel to help stabilize the vehicle.

\*Late availability.

## H A N D L I N G

- *SUSPENSION*

- *CHASSIS*

It's only logic. Better engineering equals better ride and handling.

Bravada *doesn't feel like most SUVs* because it isn't designed like most SUVs. It turns, responds and handles with confidence for the simple reason that it's designed to do that. At the front, Bravada has an upper and lower control arm suspension. This is the same configuration you'll find in premium sedans and sports cars. Why put that kind in an SUV? Because it does a great job. At the rear is an *electronically controlled air suspension* system that isolates you from road roughness in a way that steel springs simply can't. Now combine that with the finely calibrated *rack-and-pinion steering* for enhanced control and prepare to be amazed with every curve in the road.



## H A N D L I N G

- *SUSPENSION*
- *CHASSIS*



### The suspension was designed on three principles: smoothness, smoothness and smoothness.

How does Bravada achieve its impressive level of smoothness? Part of the secret is the 5-link ELECTRONIC REAR AIR SUSPENSION SYSTEM, specifically designed for Bravada. Instead of coil springs made of steel, the rear suspension uses air as the cushion. When you replace steel with air, the result is definitely smoother. Which means

even the roughest roads become friendlier and more docile.

But the benefits don't stop there. Two ride-height sensors automatically control the air springs to help keep Bravada level — even side-to-side, whether loaded or unloaded.

At the front, an upper and lower control arm suspension soaks up bumps and smooths out rough roads with impressive resilience. This design, combined with a 6-INCH-WIDER STANCE, also allows engineers to

precisely tune it for OPTIMAL STEERING FEEL and QUICK, AGILE RESPONSE. With its POWER RACK-AND-PINION STEERING SYSTEM, you can come up to a sweeping curve, dial in just the

right amount of steering and be rewarded with a graceful steady arc.

We can't do very much about the condition of your roads. But we can at least make them feel smoother.



The power rack-and-pinion steering provides precise on-center feel for excellent directional stability, especially at highway speeds. It also reduces the turning circle to a trim 36.4 ft.



FRONT



REAR

The advanced suspension system helps keep you connected to the road. It provides a wonderful balance of smooth ride motions, firm control and precise, agile response to steering.



To give you the best possible combination of precise handling and a smooth ride, Bravada's front suspension has an upper and lower control arm design.

The brakes feature 4-wheel discs with internally ventilated rotors to reduce fade and improve braking performance. Standard antilock braking helps the driver to maintain steering control under maximum braking.

To increase rigidity, enhance crash protection and minimize noise and vibration, Bravada has a fully-boxed frame with the added strength of eight sturdy cross members.

The body is attached to the frame by 12 triaxially tuned isolators which help block out noise, vibration and harshness.

Enhanced corrosion protection and long-term durability are assured thanks to an electrostatically coated frame.

To help enhance traction and roadholding, Bravada features 17-inch Michelin M+S Cross Terrain tires specifically designed for use in SUVs.

The electronically controlled 5-link rear air suspension provides a smooth ride and automatic load leveling. The solid rear axle enhances stability under loaded conditions.



1. To create the best fit and maximum rigidity, the radiator support and structural cross members are welded together prior to installation on the frame.

2. Bravada's doors and hood are made of a special bake-hardenable steel to improve resistance to dents and dings.

3. The rack-and-pinion steering combines low steering effort with precise on-center feel. This translates to enhanced directional stability at highway speeds.

4. To isolate the drivetrain and keep vibrations from entering the cabin, the engine uses hydraulic engine mounts.

5. The outer windshield glass is thicker than the inner glass to better resist damage from stone chipping. This asymmetrical design should help to reduce maintenance costs.

6. To enhance stability, SmartTrak models have the front driveshaft passing directly through the oil pan to reduce the center of gravity. Both models also have a 6-inch-wider stance to further enhance stability.

7. Inner fenders are part of the body structure and therefore impart increased rigidity. Acoustic fender liners installed in the wheel housings help reduce road and wind noise.

## STYLE & LUXURY

- *EXTERIOR*
- *INTERIOR*
- *FEATURES*

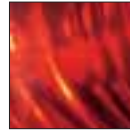
### Elegance that's anything but trendy.

The problem with trends is that they have a finite shelf life. Sometimes they're over so fast you need a stopwatch to measure them. Bravada's styling is **bold and confident**, and its appeal is definitely designed to last longer than this season. It makes its case with **clean, sculpted looks**. With its wide, **muscular stance**, the message is clearly one of brawny competence – a visual clue that Bravada measures its success by what it can do for you, not by how faithfully it conforms to the latest code of fashion. Use the stopwatch for something else. Like acceleration.



## STYLE & LUXURY

- EXTERIOR
- INTERIOR
- FEATURES



You don't need a design degree to appreciate Bravada's confident new look. It speaks for itself. Bold. Aggressive. Carefully sculpted to please the eye. It creates a distinct impression of brawny strength combined with an unmistakable level of refinement.



The outside rearview mirrors are boldly styled and have a standard defogger to enhance visibility. They also have available turn indicators, a memory recall and an Electrochromic feature on the driver's side that automatically reduces distracting glare.

But there's more than high style at work here. The **HIGH SEATING POSITIONS** give a **GREAT VIEW** of the road and traffic ahead. The large glass area provides plenty of **ALL-AROUND VISIBILITY** and gives the cockpit an airy, open feeling.

The interior designers created a driver-oriented environment. They carved out a generous amount of space and provided plenty of leg, elbow and shoulder room. There's also ample cargo room behind the rear seat, and with the rear seats

folded down, Bravada provides you with a massive **80.1 CU FT OF CARGO CAPACITY**. Which is enough room to handle even your most extravagant shopping expedition.

While good looks alone is reason enough for Bravada's appeal, this is one SUV whose styling is backed up with some serious driver benefits.



There's substance under that style. The parabolic lens design and wraparound shape improve their visibility to traffic behind you.

## Style that goes beyond good looks.



The integrated design of the standard rooftop luggage rack blends seamlessly into the overall exterior styling. The rack can carry up to 200 lbs of cargo. For added convenience, you can opt for an accessory bicycle carrier.\*

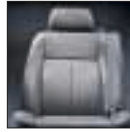
\*Utility bar required. See your participating dealer for details.



Bravada in Jewelcoat Red. Shown with available equipment and dealer-installed assist step.

## STYLE & LUXURY

- EXTERIOR
- INTERIOR
- FEATURES



With this interior, no one will notice the scenery.

Bravada's high level of technology is matched by an equally impressive interior cockpit designed to help keep you in control and wrapped in luxury. It's the kind of environment you might not expect in an SUV. But this is Bravada.

For starters, a DUAL-ZONE AUTOMATIC CLIMATE CONTROL SYSTEM lets the



The standard 8-way power front seats can be further tailored with the available driver-side memory and heated seat functions. The seatback can be individually heated.

driver and front passenger set a separate temperature for each side. The driver can adjust the temperature or change the radio without removing a hand from the wheel, thanks to the STANDARD STEERING WHEEL TOUCH CONTROLS. The less time spent fumbling with controls, the more you can focus on the road ahead.

While some information systems are limited to providing trip mileage and fuel consumption, Bravada's STANDARD PROGRAMMABLE DRIVER INFORMATION CENTER monitors dozens of individual functions. By means

of the steering wheel-mounted controls, memory settings can be created through the driver information center for the radio station selection, radio presets and available seat and mirror

ENGINE OIL LIFE: 91%

PERIMETER LIGHTING

SEAT POSITION RECALL

LOCK DOORS IN GEAR

The rear-seat fan controls and audio controls let the rear passengers set their preferred fan speed and listen in privacy by means of standard headphone jacks.

positions. You can also personalize other functions as well. To enhance security for instance, you can program the headlights to remain on for as long as three minutes after you exit the vehicle.

All this, combined with STANDARD LEATHER-TRIMMED seating, creates one of the most luxurious and individually tailored environments on the road.

The standard driver information center can customize Bravada to your preferences. It can even "talk" to you in any of six languages including Spanish and Japanese.





Bravada with leather-trimmed seating in Pewter. Shown with available equipment.



Bravada with leather-trimmed seating in Pewter. Shown with available equipment.



## STYLE & LUXURY

- EXTERIOR
- INTERIOR
- FEATURES

### Take six for the road.

Bravada's standard audio system is so advanced, it can even tell you what you're listening to. Standard with the AM/FM STEREO, CD AND CASSETTE PLAYERS is a RADIO DATA SYSTEM (RDS). When tuned to stations equipped with RDS, the radio provides a scrolling message that can tell the type of station you're listening to and numerous other messages such as upcoming programs.

For exceptional sound reproduction and faithful acoustic imaging, the available BOSE® PREMIUM MUSIC SYSTEM is specifically tuned to the Bravada's unique acoustic signature.

Also available is an IN-DASH, 6-DISC CD PLAYER. You can load up to six CDs right into the dash slot without the need for a separate CD magazine. Load discs on Monday and listen all week.





## Versatile and practical. Think of it as your personal organizer.

In addition to Bravada's class-leading levels of comfort and luxury, there's another side to the Bravada story — practicality. Whether you take along a lot of gear or a little, it can help get you organized. The 60/40 SPLIT-BENCH FOLDING REAR SEAT, for instance, makes it easy to carry long cargo or a combination of cargo and passengers. The STANDARD

OVERHEAD CONSOLE has storage for sunglasses, and it features the STANDARD UNIVERSAL GARAGE DOOR OPENER activation buttons. You'll also find cupholders for the front and rear, front-door map pockets and five convenient cargo tie-down hooks. With Bravada you've got a convenient place for everything you carry. And everything in its place.



The split-bench folding rear seat is equipped with head restraints that automatically flip out of the way when the seats are folded.



The standard inflator kit is equipped with a variety of nozzles to let you inflate beach toys, tires, bicycle tires or sports equipment.

For added security or to store small items that could be easily damaged, Bravada features a standard cargo area under-floor storage bin.



Easy to reach and operate, the overhead console has storage for sunglasses, and it features a standard universal garage door opener. The available TravelNote lets you record audio notes. It's now easy to remind yourself to pick up dry cleaning, to attend a meeting or of the time you left on your trip.

## S A F E T Y

- CRASH AVOIDANCE
- OCCUPANT PROTECTION
- SECURITY

### Safety from the ground up.

Bravada's safety begins where it counts the most – right at the chassis. To help avoid a collision in the first place, Bravada features internally ventilated 4-wheel antilock disc brakes and an available traction control system.\* The fully-boxed frame is exceptionally strong. Designed to work in concert with Bravada's new body structure, this sturdy platform enhances protection in front and side impacts. The front occupants are protected by side-impact air bags in addition to the dual-stage frontal air bags.\*\* These are potent allies that are always ready to assist the driver to help avoid a collision and help keep you safe.





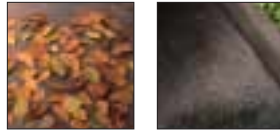
Bravada in Pewter. Shown with available equipment.

S A F E T Y

CRASH AVOIDANCE •

OCCUPANT PROTECTION •

SECURITY •



Yes, it is rocket science.

When it comes to safety and security, there's no such thing as having too much of it. Or going too far. Even if that means outer space. What we're talking about is the standard ONSTAR\* service, which is available in the U.S. and Canada wherever a cellular connection can be made. It uses global positioning satellites to pinpoint your location. Among its benefits, the system senses the deployment of an air bag and automatically

contacts an OnStar advisor who can determine your location and alert local emergency services. If you lock your keys in your Bravada, the OnStar advisor can also unlock the doors remotely.

In addition to its rigid ladder-frame chassis, safety cage structure and driver and front-passenger **FRONTAL AND SIDE-IMPACT AIR BAGS,\*\*** Bravada also features **3-POINT SAFETY BELTS FOR ALL SEATING POSITIONS.** This includes the rear center position. Additionally, the front safety belts

are mounted to the seats and move with them for added comfort.

Other safety features include **DAYTIME RUNNING LAMPS** to help make you more visible to oncoming traffic, Electrochromic rearview mirror, foglamps, cornering lamps

and available **RAIN-SENSING WINDSHIELD WIPERS** that can be set to activate automatically with the first drops of rain. Drive Bravada with added confidence. Its safety and security systems are standing by to help should you need them.

With OnStar as standard equipment, you've got peace of mind. With the available premium service plan, you can also request directions to a destination, the name of local restaurants or even the location of an automated bank teller.



Standard programmable power door locks can be activated from up to 30 feet away. A push of the panic button sounds the horn and flashes the headlamps.



The standard dual frontal air bags are complemented by driver and front-passenger side-impact air bags to provide an added level of occupant protection in a moderate to severe side impact collision.

\*One-year OnStar safety and security agreement is standard. Premium service plan is available at additional cost. Call 1-800-ONSTAR-7 for system limitations and details. OnStar uses existing emergency service providers, as well as cellular telephone and satellite technologies. Vehicle electrical system must be operating for OnStar to work. \*\*Always use safety belts and proper child restraints, even with air bags. Children are safer when properly secured in a rear seat. Never place a rear-facing infant restraint in the front seat of any vehicle equipped with an active air bag. See Owner's Manual for more safety information.

## FEATURE SUMMARY



**Silky Power** Bravada's innovative inline six is inherently smooth and features a DOHC, four-valve design for improved breathing and power production. Pg. 10

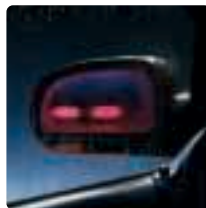
**Smooth Ride** The electronic rear air suspension system provides the right balance of a smooth and controlled ride. The load-leveling system automatically adjusts ride height. Pg. 14



**Precise Handling** With an upper and lower control arm front suspension and the power-assisted, rack-and-pinion steering, Bravada responds faithfully to commands and handles curves with insolent ease. Pg. 16



**Total Luxury** Bravada's wealth of features includes standard leather-trimmed seating, an automatic climate control system with rear seat controls and available heated front seats. Pg. 22



## STANDARD FEATURES

### POWERTRAIN/CHASSIS AND SUSPENSION

- Vortec 4200 DOHC inline 6-cylinder engine with variable exhaust valve timing
- Electronic 4-speed automatic transmission with console shifter
- 2WD
- Fully-boxed ladder frame chassis
- Independent front suspension with upper and lower control arms, coil springs, shock absorbers and stabilizer bar
- 5-link Electronically Controlled Rear Air Suspension (ECAS) with automatic load leveling
- Power rack-and-pinion steering
- 4-wheel, internally ventilated disc brakes
- 17-inch aluminum wheels
- P245/65R17 Michelin M+S Cross Terrain all-season radial tires (2WD)
- Weight-distributing platform hitch
- 7-wire electrical harness
- Heavy-duty hazard warning flashers

### SAFETY AND SECURITY

- OnStar\*\*
- Dual frontal air bags\*
- Front-seat side-impact air bags\*
- 3-point safety belts for all seating positions
- Antilock braking system
- Brake/transmission shift interlock
- Remote-control keyless entry system
- Vehicle theft-deterrent system
- PASSLock vehicle security system
- Automatic programmable power door locks
- Rear-door child-security locks
- Rear child-seat tether anchors
- Automatic headlamps
- Heated power outside rearview mirrors
- Daytime running lamps
- Foglamps
- Cornering lamps
- Illuminated entry system
- Front pulse wipers
- Rear wiper/washer
- Rear-window defogger
- Battery-rundown protection

### DRIVER CONTROLS

- Driver Information Center
- Steering wheel-mounted controls for audio, temperature and Driver Information Center
- TILT-Wheel adjustable steering column
- Cruise control
- Backlit switches
- Remote release for hood
- Reminder chimes

### SEATING AND TRIM

- Leather-trimmed seating areas
- Contoured front bucket seats
- 8-way power driver and front-passenger seats
- 60/40 split-bench folding rear seat with foldaway head restraints
- Driver and front-passenger 4-way power lumbar adjustment
- Leather-wrapped steering wheel
- Storage: Front console, glove box, overhead console, map pockets in doors and front seatbacks, front and rear cupholders (4) and rear cargo under-floor storage
- Passenger-assist grips (4)
- Sun visors with illuminated vanity mirrors
- Carpeted front and rear floor mats

**Safety** To help protect front-seat occupants, Bravada features dual frontal air bags and side-impact air bags.\* Other features include three-point safety belts for all seating positions and front and rear crumple zones. Pg. 31



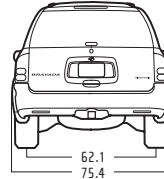
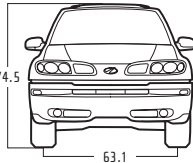
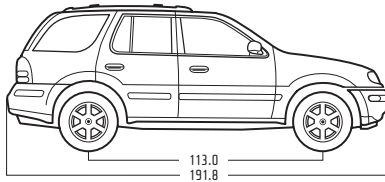
**Refined Styling** Every inch of the exterior is carefully sculpted. Its aggressive good looks are complemented by a rigid steel frame for better noise isolation than a unibody structure. Pg. 20

## COMFORT AND CONVENIENCE

- Dual-zone automatic climate control system with rear-seat fan controls
- Power windows with driver and front passenger express-down feature
- Universal garage door opener • Foldaway outside rearview mirrors
- Adjustable front and rear outboard safety belt comfort guides
- Electrochromic inside rearview mirror with compass • Air inflator
- Auxiliary power outlets (4) • Coat hooks (2) • Retained accessory power
- AM/FM stereo with CD/cassette players and Radio Data System (RDS)
- Rear-seat audio system • Diversity antenna

## EXTERIOR

- Halogen headlamps • Solar-treated windshield and privacy glass in rear doors, rear quarters and tailgate • One-piece rear liftgate with separate liftglass • Body-colored side moldings and bumpers • Rooftop luggage carrier • Underbody spare tire mount (full-size)



## AVAILABLE FEATURES/PACKAGES

- Traction control with locking rear differential (2WD)<sup>†</sup>
- SmartTrak all-wheel-drive system with locking rear differential and P255/60R17 Michelin M+S Cross Terrain all-season radial tires
- BOSE Premium Music System
- In-dash 6-disc CD player
- Electric glass-panel sunroof
- Engine block heater (AWD only)
- HomeLink® Lighting Package (call 1-800-355-3515 to order)
- 4.10 enhanced towing axle

## CONVENIENCE PACKAGE

Includes: • Driver's seat memory system • Heated front seats with separate controls for back cushion • Outside rearview mirrors with turn indicators, memory and reverse tilt-down, and driver's side Electrochromic feature • Cargo net and shade • TravelNote

## CONVENIENCE AND LUXURY PACKAGE

Includes all of the features in the Convenience Package plus:

- Rain-sensing wiper system • Polished aluminum wheels

## GOLD PACKAGE

- Gold exterior emblems

See your dealer for the complete line of available accessories.

## SPECIFICATIONS & DIMENSIONS

### POWERTRAIN

Engine displacement	4.2 liters
Horsepower (hp)	270 @ 6000 rpm
Torque (lb-ft)	275 @ 3600 rpm
Fuel injection	Sequential port
Transmission	4-speed automatic
Final drive ratio	3.73 / 4.10 (optional)

### INTERIOR DIMENSIONS

Headroom, front/rear (in)	40.2 / 39.6
Legroom, front/rear (in)	43.1 / 37.1
Shoulder room, front/rear (in)	58.5 / 58.5
Hiproom, front/rear (in)	55.5 / 58.1

### CAPACITIES

Passengers	5
Cargo capacity, seats down/up (cu ft)	80.1 / 39.8
Fuel (gal)	18.7
Towing (lb)	5700 (2WD) / 5600 (AWD) <sup>††</sup>
Towing with 4.10 rear axle (lb)	6200 (2WD) / 6100 (AWD)
Rooftop luggage carrier (lb)	200.0

### EXTERIOR DIMENSIONS

Wheelbase (in)	113.0
Length (in)	191.8
Width (in)	75.4
Height (in)	74.5
Curb weight (lb)	4442 (2WD) / 4628 (AWD)
Step-in height, door opening (in)	18.2
Tread width, front/rear (in)	63.1 / 62.1
Turning circle (ft)	36.4
Ground clearance (in)	8.0

\*Always use safety belts and proper child restraints, even with air bags. Children are safer when properly secured in a rear seat. Never place a rear-facing infant restraint in the front seat of any vehicle equipped with an active air bag. See Owner's Manual for more safety information.

\*\*One-year OnStar safety and security agreement is standard. Premium service plan is available at additional cost. Call 1-800-ONSTAR-7 for system limitations and details. OnStar uses existing emergency service providers, as well as cellular telephone and satellite technologies. Vehicle electrical system must be operating for OnStar to work. †Late availability. ††Maximum trailering weight includes driver, one passenger and all required trailering equipment. See Trailering Guide and inside back cover of this brochure for details.



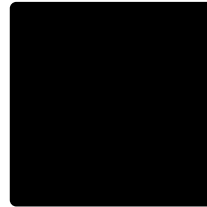
## EXTERIOR COLORS



Pewter [11]  
[available with Pewter interior only]



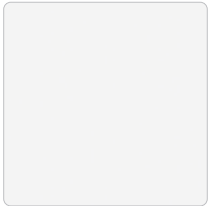
Indigo [39]



Black Onyx [41]



Polo Green [47]\*



Arctic White [50]



Sandalwood [58]\*  
[not available with Pewter interior]

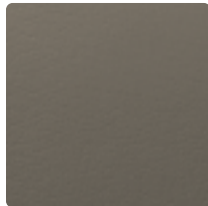


Jewelcoat Red with tinted topcoat [86]\*\*

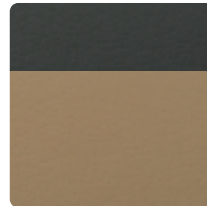
## INTERIOR COLORS



Camel [652]



Pewter [952]



Camel seats with Dark Pewter accents [692]\*

## A WORD ABOUT OLDSMOBILE

The Occupant Protection, Crash Avoidance and Security/Theft Deterrence sections below contain a partial listing of Bravada safety features. See your dealer for complete details.

### Use Your GM Card

When you use The GM Card, you receive 5% Earnings\* on your purchases toward the purchase or lease of an eligible new GM car or truck (excluding Saturn, Saab and EVI unless subject to a special promotion). These Earnings can save you hundreds, even thousands, toward a new GM car or truck. To apply for your GM Card, call 1-800-86M-CARD, 24 hours a day. Visit us online at [www.gmcard.com](http://www.gmcard.com). \*See the applicable Earnings and use rules for your GM Card [either the GM Card Earnings Program Rules or The GM Card Redemption Allowance Program Rules] for terms, conditions and limitations.

### SMARTLEASE by GMAC

SMARTLEASE lets qualified customers pay for the expected depreciation of the vehicle over a period of time, plus a rent charge, taxes and fees, rather than paying for the entire vehicle as you would with traditional financing. This typically means with SMARTLEASE you'll be able to drive a new vehicle every few years or drive a better-equipped model. Ask your Oldsmobile dealer for more information or call 1-800-32-SMART.

### For Occupant Protection

Driver and front-passenger dual-level air bags • Driver and front-passenger side-impact air bags • Rear lap/shoulder belts • Adjustable front and rear outboard shoulder-belt guides • Safety-belt cinch capability for child seats • Rear-door child-security locks • Power-window lockout

### A Note on Child Safety

Always use safety belts and proper child restraints, even with air bags. Children are safer when properly secured in a rear seat. Never place a rear-facing infant restraint in the front seat of any vehicle equipped with an active air bag. See your vehicle Owner's Manual and child safety seat instructions for more safety information.

### For Crash Avoidance

4-wheel antilock brakes • Brake/transmission shift interlock • 4-wheel disc brakes • Disc brakes audible wear indicator • Maintenance-free battery • Tires with built-in tread wear indicators • Automatic daytime running lamps • Foglamps • Halogen headlamps • Heated power outside rearview mirrors • Rear window defogger • Rear window wiper/washer • Front side-window defoggers • Tinted glass windshield • Automatic exterior lamp control • Electrochromic inside rearview mirror • Door warning reflectors

### For Security/Theft Deterrence

Anti-lockout feature • Laser-etched VIN plate • PASSLock vehicle theft-deterrent system • Remote hood release • Remote-control keyless entry system • Marked body parts • Audible theft-deterrent system • Battery-rundown protection • Stolen vehicle tracking/emergency communication

### A Note on Trailering

Maximum trailer weight is calculated assuming the driver and one passenger are in the tow vehicle and it has all required trailering equipment. The weight of additional optional equipment, passengers and cargo in the tow vehicle must be subtracted from the maximum trailer weight. Some models, when loaded with driver, passengers and maximum tongue load, may exceed the maximum GVW rating for that vehicle. Optional equipment and an appropriate owner-installed hitch may be required to achieve ratings. See your dealer for details.

### A Word About This Catalog

We have tried to make this catalog comprehensive and factual. We reserve the right, however, to make changes at any time, without notice, in prices, colors, materials, equipment specifications, models and availability. Since information may have been updated since the time of printing, please check with your Oldsmobile dealer for complete details. Oldsmobile reserves the right to lengthen or shorten the model year for any product for any reason, or to start and end model years at different times.

### The GM Mobility Program

Oldsmobile recognizes the importance of mobility to everyone's life and, therefore, offers financial assistance to persons with disabilities through the General Motors Mobility Program. This program can provide up to \$1,000 reimbursement toward the cost of eligible aftermarket adaptive equipment for drivers and passengers. For details and free resource information, call 1-800-323-9935 [TTY users: 1-800-833-9935].

### Assembly

Oldsmobiles and their components are assembled or produced by different operating units of General Motors, its subsidiaries or suppliers to GM worldwide. We sometimes find it necessary to produce Oldsmobiles with different or differently sourced components than originally scheduled. Since some options may be unavailable when your vehicle is assembled, we suggest that you verify that your vehicle includes the equipment you ordered or, if there are changes, that they are acceptable to you.

### Engines

Oldsmobiles are equipped with engines produced by different operating units of GM, its subsidiaries or suppliers to GM worldwide.

### GM Protection Plan

The GM Protection Plan offers service protection in addition to that provided by GM's New Vehicle Limited Warranty. Ask your dealer about it. Coverage available only in the U.S. and Canada.

### Updated Service Information

Oldsmobile dealers receive useful service bulletins about Oldsmobile products. You can order them by calling 1-800-551-4123.

### Bumper-to-Bumper Limited Warranty

For three years or 36,000 miles (whichever comes first), every part of your new Bravada is warranted for repairs to correct any vehicle defect related to materials or workmanship, including tires. With this limited warranty, there's no deductible, which means we'll pay for any repairs beyond normal maintenance. All body sheet metal components are warranted against rust-through from corrosion for six years or 100,000 miles, whichever comes first. There is also no deductible for rust-through repairs. Application of additional rust-inhibiting materials is not required or recommended. See your Oldsmobile dealer for the terms of this limited warranty.

### Owner Aftercare

Throughout our three-year/36,000-mile (whichever comes first) Bumper-to-Bumper Limited Warranty, we also offer Courtesy Transportation, free trip routing and 24-hour Roadside Assistance by calling 1-800-442-OLDS. At Oldsmobile, we're committed to your satisfaction long after the purchase of your vehicle.

Visit us at [www.oldsmobile.com](http://www.oldsmobile.com) or call 1-800-255-6537 for information on any Oldsmobile product. For more information about Bravada, visit our website at [www.bravada.com](http://www.bravada.com) or call 1-877-4BRAVADA.

©2000 GM Corp. All Rights Reserved. Printed in the USA 12/00. Bravada, GMAC, The GM Card, Oldsmobile, the Oldsmobile emblem, the Oldsmobile nameplate, PASSLock, SmartTrak and SMARTLEASE are registered trademarks of General Motors Corp. Vortec is a trademark of General Motors Corp. Delphi is a registered trademark of Delphi Automotive Systems. TILT-Wheel is a trademark of Delphi Automotive Systems. OnStar and the OnStar button are registered trademarks of OnStar Corp. TravelNote and HomeLink are registered trademarks of Prince Corp. Printed on recyclable paper.



***BRAVADA***

[www.bravada.com](http://www.bravada.com) 1-877-4BRAVADA  Oldsmobile