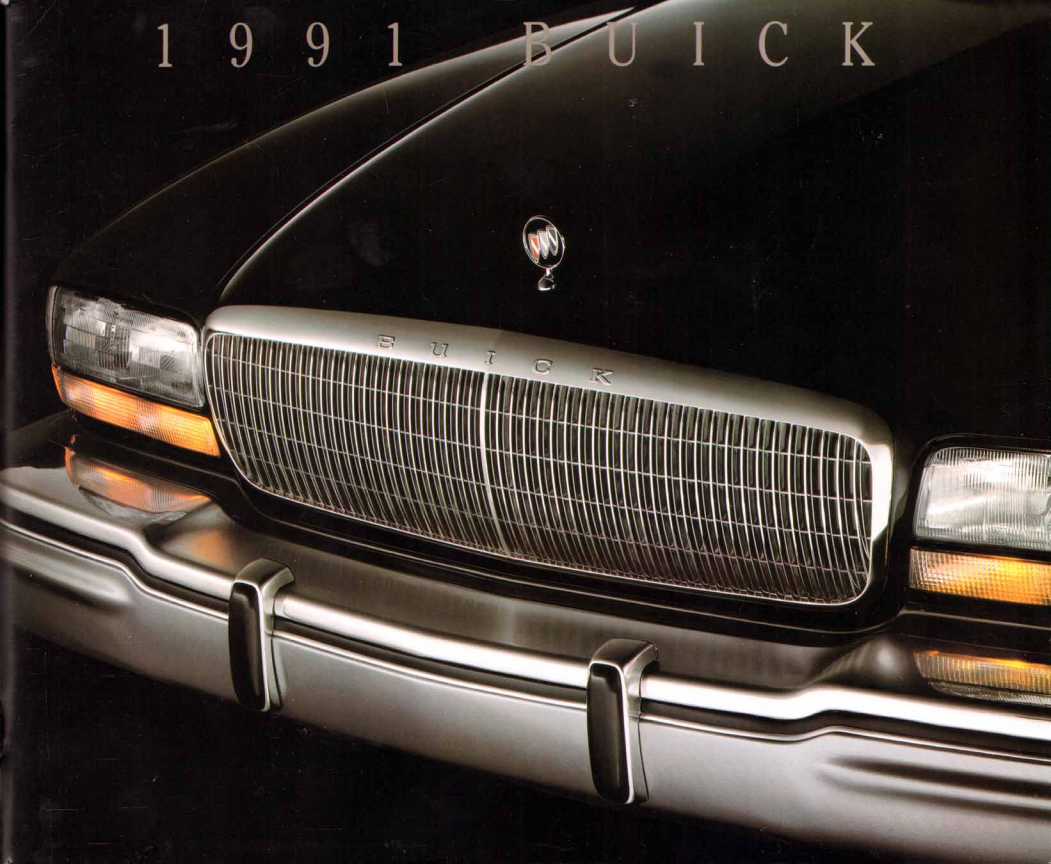


1 9 9 1 B U I C K





Quality is as elusive as truth. Many claim it, few actually capture it.



**Quality cars deserve quality sound.** All Buick sound systems are designed to fill your travels with resonant sound and a beautiful listening experience. And for the serious audiophile, there are available upgrades that can provide even more superb

more details on exquisite sound systems available, see page 42 and the specification page for the Buick of your choice.



**Smoothly forceful.** The combination of the 3800 V-6 with tuned-port injection and the advanced new electronically controlled 4-speed automatic transmission with overdrive is potent and civilized. Shifts are almost imperceptible, timed to stay near the engine's torque peak for excellent response.

sound quality. The Concert Sound II speaker system is a perfect example with rich, pure sound reproduction from dual front extended-range woofer/tweeter units matched by dual rear extended-range speakers. Better still, the Concert Sound system is configured for the acoustics of the specific Buick it is in. For

**Choose your climate.** Buick's dual ComforTemp climate control lets you and your front-seat passenger select your individual temperature settings. It is standard on the Park Avenue Ultra and available on Park Avenue and Regal.



**A sense of control.** Buick's anti-lock braking system (ABS) minimizes wheel lockup during extreme braking conditions while maintaining steering control. It monitors each wheel and senses impending lockup. Buick's ABS apportions more braking power to the wheel with the best traction and pulses brake pressure independently up to 15 times a second for retained control in most road conditions.

**Take it with you.** You may have concluded that to tow a trailer means resigning yourself to a van or a truck. Not so. You can tow up to 5,000 pounds with Buick comfort and quality. See page 43 in this catalog and ask your dealer for detailed trailer towing information.

**The thinking suspension.** Buick's advanced DynaRide™ suspension senses road conditions and reacts accordingly. Advanced valving technology uses a pyramid of disc valves that vary in diameter and thickness. A minor bump deflects just the first disc for isolation from road imperfections. In more severe

**Putting rust to rest.** Rust and corrosion can rob a car of its value quickly, so Buick fights it in ways both subtle and direct. For example, many Buick models have body panels galvanized with zinc on both sides everywhere but the roof to help prevent chips from becoming rust spots. That's



conditions, pressure in the shock absorbers bends thicker discs for additional control.

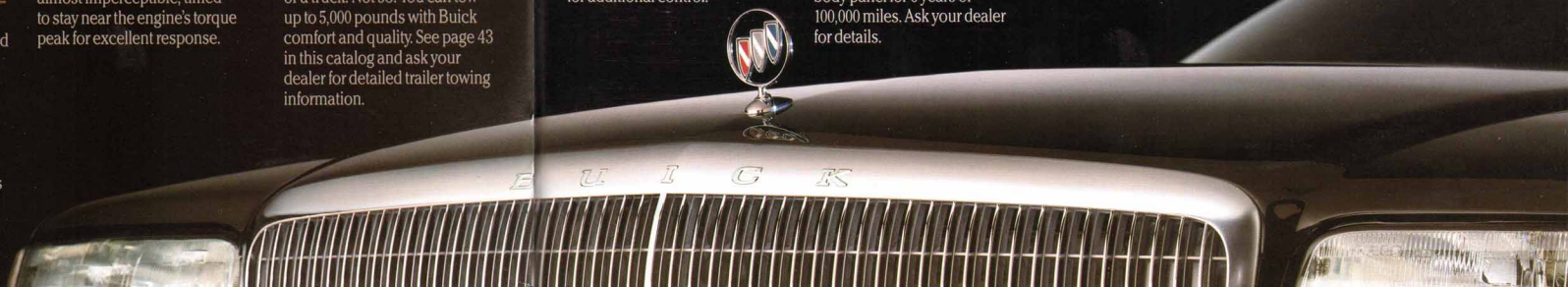
one of the reasons Buick is warranted not to rust through any body panel for 6 years or 100,000 miles. Ask your dealer for details.



**State-of-the-art safety.** A driver's-side Supplemental Inflatable Restraint system (air bag) is standard on Roadmaster, Park Avenue, Riviera and Reatta. It is designed to supplement the manual front-seat lap/shoulder belt system in substantial frontal impacts of over 12 to 14 miles per hour. Some Buicks are

equipped with automatic safety belt systems for the driver and right front passenger.

**Protecting your investment and your time.** Buick's protection begins, but does not end, with the GM 3-year/50,000-mile BUMPER TO BUMPER PLUS WARRANTY. See your dealer for terms of this limited warranty. Free roadside assistance is available to owners of all 1991 Buick models. It provides minor repairs or towing for disabled vehicles for 3 years or 50,000 miles, whichever comes first. When you need it, just call 1-800-252-1112, 24 hours a day, 365 days a year. Ask your dealer for details.



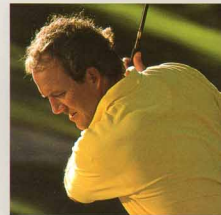


## PARK AVENUE ULTRA & PARK AVENUE

The Park Avenue® and Park Avenue Ultra are the most sophisticated 6-passenger sedans Buick has ever offered.

driving security on a wide variety of driving surfaces. And the PASS-Key® automotive theft-deterrent system helps keep your car secure.

What's more, Park Avenue is built with a level of care that makes it a proud example of Buick at its best.



Solar-control glass is standard to help filter out harmful ultraviolet rays and decrease glare inside. It's a new way to help protect your upholstery and even helps keep the interior cooler.

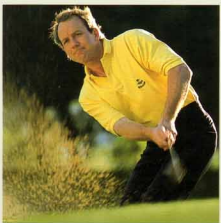
Special security measures operate both on the road and in the parking garage: Anti-lock brakes provide an added measure of

Every body panel except the roof is made of steel galvanized on both sides with zinc or of a composite that is impervious to corrosion. This helps prevent little dents from becoming big, ugly rust spots.

From front to back, the lines are elegant and refined, including special aluminum wheels exclusive to Park Avenue and Park Avenue Ultra.







The new Park Avenue Ultra and Park Avenue are automobiles designed to stir the spirit and reward it at the same time.

The Park Avenue advanced powerteam is the 3800 V-6 engine with tuned-port injection driving a new whisper-smooth, electronically controlled, 4-speed automatic transmission with overdrive — the first such transmission ever offered in a General Motors luxury sedan.

Together, they perform like no other powertrain team ever offered in a premium-quality American luxury motorcar. That ought to stir the spirit.

As for the reward, these cars have the style and the substance that tell you instantly they are premium automobiles with a level of quality you can depend on.

Whether you select the ultra-luxurious Park Avenue Ultra or the distinguished Park Avenue, your spirits are in for a lift and a reward.



Set the sound level once and you'll hear it the way you want it no matter what your speed with speed-compensated stereo available in Park Avenue and Park Avenue Ultra.

Dual rear-seat vanity mirrors offer added convenience for Park Avenue Ultra passengers in the back.



Standard anti-lock brakes offer excellent stopping power and steering control.



Park Avenue has the 3800 V-6 with tuned-port injection and new electronically controlled 4-speed automatic transmission with overdrive for smooth shifts and exhilarating power.



The Park Avenue Ultra is sleek, luxurious and lavishly equipped with comfort and convenience features. With its room, luxury, quality and style, the Park Avenue is truly a premium American motorcar.





Inside, the level of luxury and convenience is nothing short of astonishing.

Rear-seat passengers in the Ultra have two lighted vanity visors that swing down from the headliner. In front, dual automatic ComforTemp climate control allows driver and the front-seat passenger to select separate temperature levels. (It is available on the Park Avenue as well.)

Sierra Ultra Soft leather with doeskin vinyl seating is standard in the Park Avenue Ultra and available in the Park Avenue.

As you increase driving speed, the volume of the sound system automatically rises so you only need to set the volume control once.

The list of unexpected luxuries and conveniences is far too long to print here. But your Buick dealer will be happy to explain them. He will also arrange for you to test-drive these most sophisticated Buicks and see for yourself.

The backlit instrument panel is shown with available analog gage cluster. Note the steering wheel housing for Supplemental Inflatable Restraint system (SIR) and controls for automatic dual ComforTemp climate control.



Park Avenue interior in the available Sierra grain Ultra Soft leather and doeskin vinyl.





## RIVIERA

**F**rom the beginning, Riviera® has stood apart from the crowd. With its distinctive style, impressive capabilities and pure luxury, it is a contemporary American classic.

new vertical grille, makes Riviera unmistakable.

And a tradition of quality, smoothness and style makes it a Buick.



New power comes from a 3800 V-6 with tuned-port injection matched with a new electronically controlled 4-speed automatic transmission with overdrive.

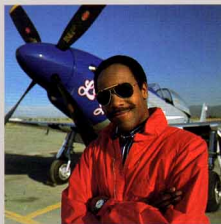
The 4-wheel independent suspension with either DynaRide® or available Gran Touring tuning makes it exciting. (With either suspension, you have the luxury of automatic level control.)



Distinctive styling, set off by a







Riviera's long, graceful lines and unique styling make a powerful statement about those who drive it. And it has the substance to back that up.

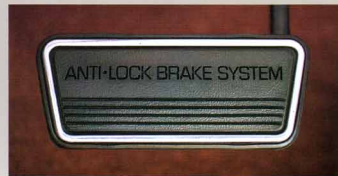
The 4-wheel disc brakes include a sophisticated anti-lock braking system (ABS) for good steering control in adverse conditions.

PASS-Key® automotive theft-deterrent system offers a high level of confidence.

And a revised engine mount system makes the smooth power of Riviera's V-6 engine very satisfying.

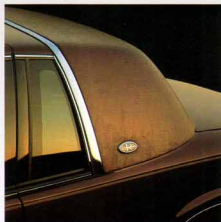
What's more, every body panel except the roof is made of steel galvanized on both sides with zinc. This helps prevent scratches, stone chips and parking lot dimples from turning into ugly rust spots.

It's a distinctive automobile for those who have their own special style and who know what they want.



Anti-lock brakes are standard on Riviera for excellent stopping power and steering control on slippery surfaces.

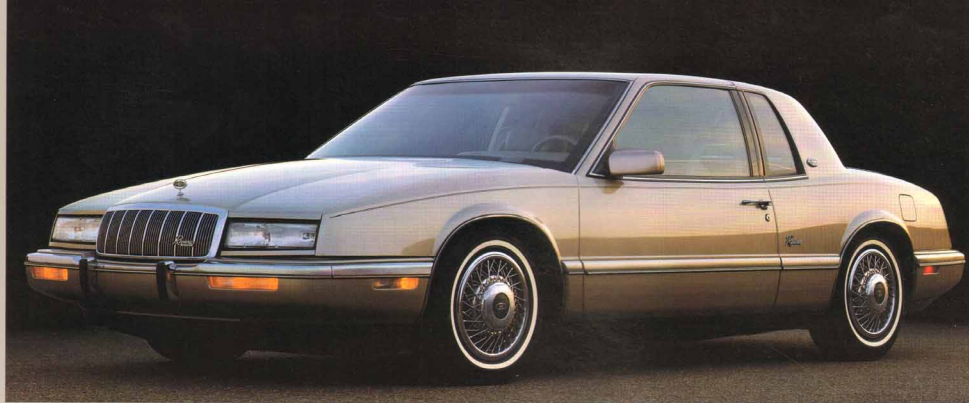
The Landau top available on Riviera gives an extra touch of elegance and style to a contemporary American classic.



Select a comfort setting and forget it: Riviera's electronic touch climate control.



The remote keyless entry system available on Riviera adds to your convenience as well as to your security.



Even at a distance, you will not mistake the Riviera for another automobile. The look is unique. A classic design like the Riviera (shown with available aluminum wheels) shows even in the attention to details that set it apart.





Inside Riviera you'll find a level of comfort, convenience and luxury appointments that make ownership a genuine pleasure.

The sound system is an ETR® AM-FM stereo and cassette with seek and scan, auto reverse with search/repeat, and clock, playing through a 6-speaker Concert Sound system. Or you may select a compact disc player with graphic equalizer and AM stereo<sup>1</sup> as well as FM stereo. An even more impressive Delco/Bose Gold Series Music System is also available.

The electrical system is designed for convenience, too. Upon entry, your interior lights remain illuminated for 25 seconds or

The crisp, undistorted sounds of CD may be added to the Riviera's sound system for your pleasure on the road.



until you start your car. And the retained accessory power feature keeps your sound system, sunroof, power windows and windshield wiper and washer operational for up to 10 minutes from the time you turn off the ignition to the time you open a door.

with Sierra vinyl in place of Riviera's rich velour interior.

Electronic touch climate control keeps your interior ambience at a constant comfort level, no matter what the weather. And cruise control is also standard, naturally, to make long trips easy.



The instrument panel of the Riviera features a digital speedometer for clarity and analog instruments for quick, accurate readings.

Riviera's list of luxuries goes on to include a 6-way power driver's seat. A 6-way power passenger seat with power recliner is available, as is a 14-way power driver's seat.

The Riviera: classic lines, classic Buick quality, classic luxury and a classic way with the road.

If you wish, you may specify the extra-cost Sierra Ultra Soft leather

<sup>1</sup>Receives C-Quam® AM stereo broadcasts. Most AM stereo stations across the country broadcast in C-Quam® but some do not. Check with your local station for compatibility in your area.

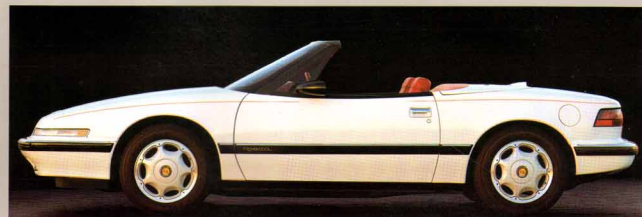


## REATA

**B**uick's Reatta® is an automobile that appeals powerfully to your active, sporting side.

But it is more than just a sports

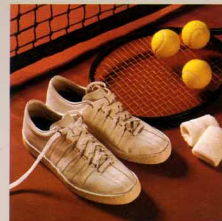
However you define the Reatta, you will be pleased by how well it matches your definition, and by how beautifully it represents the new meaning of quality in America.



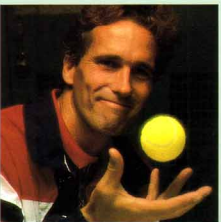
toy. It is a world-class, limited-production 2-seater with sporting exhilaration and the luxury and comfort of a Buick. As a result, the Reatta means different things to different people.

To some, it is a reward for years of diligence that now permits a bit of indulgence.

To others, it is a perfect blend of excitement and comfort.







People expect a Buick to be special, but the Reatta goes far beyond that.

Its unique brand of exhilaration comes from a powerful 3800 V-6 engine with tuned-port injection.

The transmission is a new electronically controlled 4-speed automatic with overdrive. Shifts are positive, and matched with the torque of the engine to provide smooth, refined performance.

Low-profile tires and 16-inch aluminum wheels are new, giving the Reatta a businesslike stance. The standard 4-wheel independent Gran Touring suspension offers sporting control and smooth ride.

Make no mistake about it: the Reatta is a very sporting proposition.



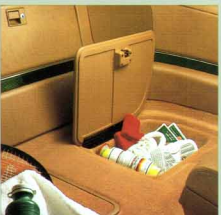
The 3800 V-6 with tuned-port injection and the new electronically controlled 4-speed automatic transmission with overdrive combine for smooth power in town and on the road.



Meticulous engineering and lavish appointments give the Reatta Coupe the performance and luxury that make it the premium American two-seater. The Reatta Convertible has a hard tonneau cover and an easy-to-raise top. The glass backlight includes a defogger.



Reatta's exquisite sound system features AM stereo<sup>1</sup>-FM stereo, graphic equalizer and the outstanding reproduction of the Concert Sound II speaker system.



Keep your valuables safe and out of sight in locking storage compartments behind the Reatta Coupe seats.

Front fog lamps help show the way in inclement weather. They are integrated in the front of the Reatta for low drag.



<sup>1</sup>Receives C-Quam<sup>®</sup> AM stereo broadcasts. Most AM stereo stations across the country broadcast in C-Quam<sup>®</sup> but some do not. Check with your local stations for compatibility in your area.



Inside, the Reatta is equally impressive. From the rich leather in the seating areas of the 6-way power bucket seats to the electronic touch climate control, the appointments are nothing short of opulent. The instrument panel features a digital speedometer and a full

audio system features graphic equalizer, cassette and ETR® AM stereo<sup>1</sup>-FM stereo with seek and scan, auto reverse with search/repeat and digital clock.

And Reatta's beauty is made to last. Every body panel except the coupe roof is made of steel



Reatta's instrument panel has an electronic digital speedometer plus analog instrumentation for quick, accurate information.

complement of analog gauges. It is as handsome as it is functional and informative.

Twilight Sentinel headlamp control, cruise control, remote keyless entry system and an electric rear-window defogger add to your convenience.

The PASS-Key® automotive theft-deterrent system adds to your peace of mind while the premium Concert Sound speaker system adds to your pleasure. Reatta's

galvanized with zinc on both sides or of a composite impervious to corrosion, to help prevent stone chips and dings from becoming rust spots.

Reatta Coupe and Convertible. Sheer exhilaration and luxury for two.

<sup>1</sup>Receives C-Quam® AM stereo broadcasts. Most AM stereo stations across the country broadcast in C-Quam® but some do not. Check with your local stations for compatibility in your area.



The available driver's seat in the Reatta adjusts electrically 16 ways to provide maximum comfort and a position to suit nearly any driver. A 6-way power seat is standard.



## REGAL SEDAN

The Regal® Sedan is yet another shining example of Buick's entry into today's demanding world of world-class quality. It's built to please you and your family, while its style and

radio controls placed a fingertip away in the steering wheel.

Buick Regal Sedan. One of the reasons Buick has become the new symbol for quality in America.



sophistication will attract approving glances wherever it takes you.

The long and distinguished list of standard features will impress you, too. Air conditioning, tilt steering wheel, 4-wheel disc brakes and 4-wheel independent suspension are included.

And there's also an impressive list of available features, including CD player, Concert Sound speaker system, cruise control, even









The handsome Regal Custom Sedan, shown with available aluminum wheels, is a sleek, beautifully appointed family car. The Regal Gran Sport Sedan is for those whose tastes are as sporting as they are elegant.



The dual ComforTemp climate control available in Regal lets you and your front-seat passenger select separate temperature settings.



The remote keyless entry system available on Regal adds to both your convenience and your security.

Regal's DynaRide suspension uses the latest suspension technology to provide smooth ride and outstanding control.



The Regal Limited, Custom and Gran Sport Sedans are pure Buick: quality, style, comfort and value you and your family will enjoy year after year.

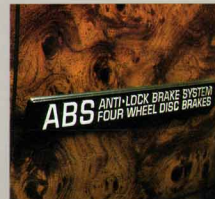
The ride is quiet and sure, with 4-wheel independent DynaRide® suspension. The Gran Sport Sedan features the special Gran Touring suspension which includes specific 16" aluminum wheels; P225/60R16 touring blackwall tires and a leather-wrapped steering wheel.

The 4-speed automatic transmission with overdrive offers in-town responsiveness and smooth highway cruising.

Inside, there is comfort and luxury, including air conditioning or the available dual ComforTemp climate control that lets you and your front-seat passenger select separate comfort settings. A tilt steering wheel accommodates your driving comfort.

The ETR® AM-FM stereo with seek and scan and digital clock drives dual front speakers and dual extended-range rear speakers.

In all, the Regal Sedans represent a new way to say quality, comfort and style in America.



Four-wheel disc brakes are standard on Regal, and the available anti-lock braking system (ABS) provides an added measure of control.

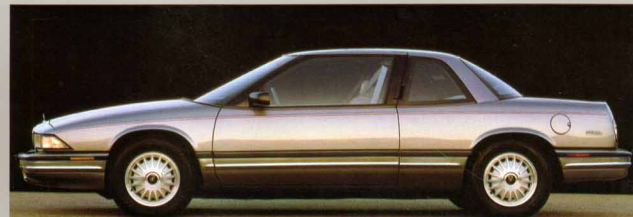


## REGAL COUPE

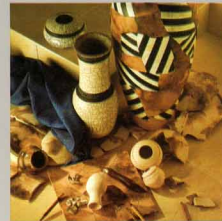
The beautifully understated good looks you want and the comfort and luxury you expect in a Buick are all here in the sleek and sporting Regal Coupe.

pinion steering make the most of the road.

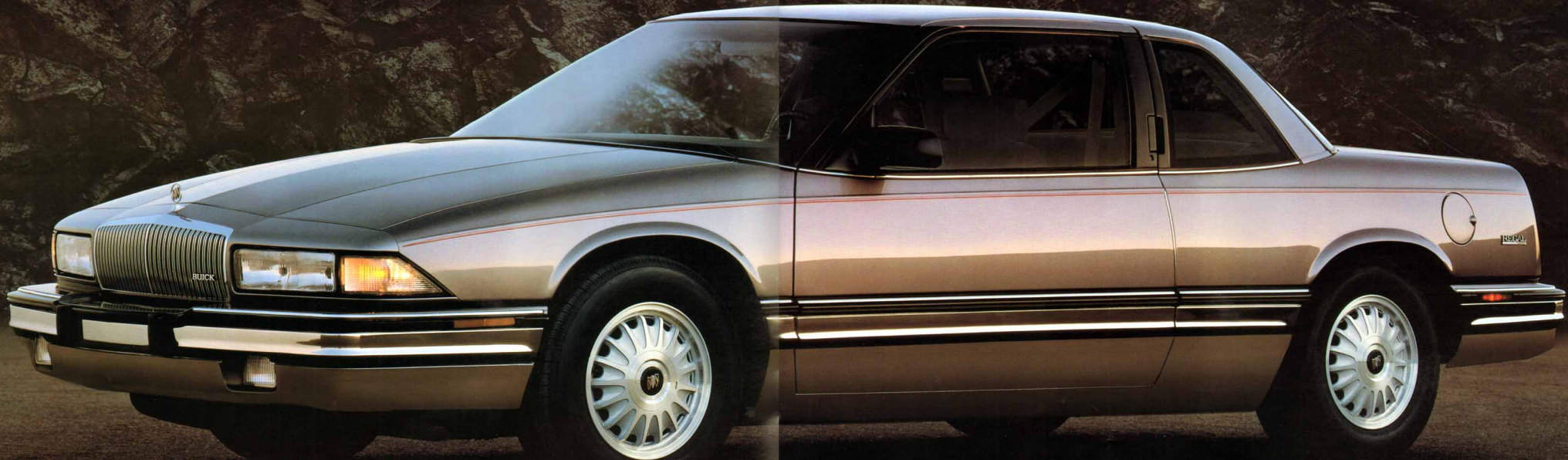
And throughout, the Regal demonstrates Buick's longstanding reputation for quality.

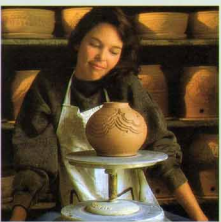


Take it out on the road and you are in for a premium driving experience. Regal slips through the air smoothly and quietly while the standard 3.1-litre V-6 or the available 3800 V-6 with tuned-port injection (standard on Gran Sport) moves you along in an exhilarating rush.



Undereath, 4-wheel independent DynaRide® suspension (Gran Touring suspension on Gran Sport) provides a smooth ride and crisp control while 4-wheel disc brakes and power rack-and-





The Regal Coupe is a graceful, exhilarating automobile with a dashing flair all its own.

It comes in three series: sleek Custom, luxurious Limited and exciting Gran Sport.

The sleek styling of a coupe and the comfort you expect in a Buick are reflected beautifully in Regal's understated lines.

You'll also take comfort in knowing that every body panel except the roof is made of steel galvanized on both sides with zinc. This helps prevent small nicks from becoming big rust spots.

And Regal's convenience is exemplified by the express-down feature included with available power windows. Now, using your parking card, feeding the toll booth or mailing a letter at curbside all become more convenient.

In style, quality and convenience, the Regal lives up to its name.

The available 3800 V-6 engine with tuned-port injection is standard on the Regal Gran Sport.



With Regal's available power windows, the express-down feature lets you lower the driver's window quickly with a single push of the button.



New analog gauges, standard on Regal Limited and GS models, are as handsome as they are easy to read.



Crystalline tail lamp lenses give the Regal Limited a fresh, new look that is elegant and sporting.



The Regal Custom Coupe, shown with available aluminum wheels, is a pleasing example of Buick quality and style. It's all business, and it looks the part. The Regal Gran Sport Coupe.





Comfort and style make the Regal interiors very regal, indeed. An abundance of burled vinyl woodgrain accents and beautiful cloth upholstery (or available Super Soft Sierra leather in the seating areas) make that point tastefully obvious. A digital speedometer is standard.



Available steering wheel radio controls and complete information are a fingertip away in the Regal's instrument panel.

on Custom models. Limited and Gran Sport feature a new standard quartz analog gage cluster, including tachometer, voltage, temperature, and oil pressure gages, combined with carefully located comfort, convenience and operating controls to make driving a simple pleasure.

Air conditioning, tilt steering wheel and ETR® AM-FM stereo with seek and scan and clock are standard.



The crisp, undistorted sounds of CD are available on the Regal for pure listening pleasure on the road.

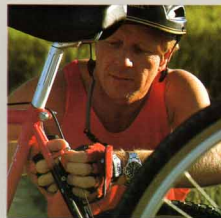
Regal. It's sleek, substantial and very, very Buick.



## LE SABRE

**T**ry to define the ideal automobile for you and your family and the odds are that you will come very close to describing the full-size, 6-passenger LeSabre.<sup>®</sup>

DynaRide<sup>®</sup> 4-wheel independent suspension provides a smooth ride with responsive handling. In daily traffic, on vacation trips, anywhere you and your family go, it takes beautiful care of you.



Handsome looks, comfortable appointments, a confident, satisfying level of performance and a full measure of Buick quality make owning and driving it a gratifying experience.

Functional excellence wrapped in a design of elegant simplicity. That's the LeSabre.

\*J.D. Power and Associates 1990 new car Initial Quality Survey.<sup>SM</sup> Based on owner-reported problems during the first 90 days of ownership.

Plus, research shows LeSabre to be the most trouble-free American car for the second year in a row.\*

The power of its 3800 V-6 engine with sequential-port fuel injection is coupled to a smooth 4-speed automatic with overdrive. And underneath it all,







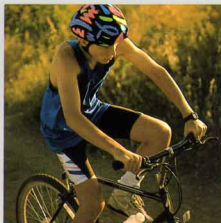
The LeSabre is available as a coupe or sedan and in three levels of trim, all of them elegant, all with an impressive array of comfort and convenience features.

Dual outside mirrors permit remote adjustment for the driver's side and a tilt steering column accommodates your most comfortable driving position.

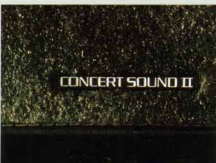
An automatic front safety belt system buckles up the driver and outboard passenger while the rear seat offers lap and shoulder belts for the outboard passengers.

And the final comfort is the knowledge that LeSabre is all Buick. The new symbol for quality in America.

Set your handsome body-color mirrors by electric remote control with this available feature on any LeSabre.



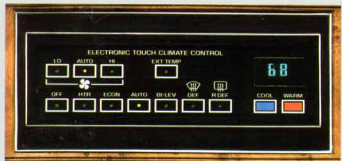
Available electronic cruise control is a convenience on long highway trips.



Whichever stereo you choose for your LeSabre, you can add to your pleasure with the outstanding sound quality of the available Concert Sound II speaker system.



The LeSabre Custom Sedan, shown with available aluminum wheels, is a full-size, 6-passenger automobile with the comfort and quality your family will appreciate. The LeSabre Coupe is a personal car that provides the luxury of room and comfort for six.



Winter or summer, pick a setting on LeSabre's available electronic touch climate control and you'll always be comfortable.





**L**eSabre's interior is an extraordinarily comfortable place to spend time on the road.

All around you is beautifully tailored velour upholstery on your choice of standard or several available seating arrangements.



The best things in life are simple, functional and beautiful, like the LeSabre's instrument panel, shown with available analog gage cluster.

Tasteful touches of woodgrain vinyl trim accent the stylish interior, including the instrument panel with its easily readable analog speedometer.

The sound system is an ETR® AM-FM stereo with seek and scan, dual front and rear speakers and a digital clock.

You and your family are going to feel very much at home in the LeSabre.

Voltmeter, oil pressure, coolant temperature gages and tachometer are included in LeSabre's available analog instrumentation cluster.



Skylark Limited Edition Sedan shown.



## SKYLARK

For the person with aspirations and plans for the future, but who wouldn't mind a taste of tomorrow's success today, Skylark® is a fitting choice.

a sense of technology in the service of comfort, and lines that are clean, distinctive and pure.

Skylark. It has Buick quality and style written all over it.



And there is one to fit nearly every taste. There are six variations on the theme of quality, reliability, convenience, sport and luxury.

The lineup includes no fewer than three coupes, three sedans and four different series: Skylark Coupe and Sedan, Skylark Custom Coupe and Sedan, Skylark Gran Sport Coupe and Skylark Luxury Edition Sedan. All share





CUSTOM

SKYLARK

BUICK



The ultimate in Skylark sophistication and comfort is the Luxury Edition Sedan. The Skylark Sedan represents Buick quality and style with exceptional value built in.



Express-down feature lowers the driver's power window with one push of the button.



Skylark's standard front disc brakes help provide stopping power.



Buick's advanced DynaRide suspension offers a smooth, comfortable ride with excellent control.

A choice of three satisfying engines starts with the standard 2.5-litre Tech IV with electronic fuel injection.

From there, you may move up to the available dual overhead cam, 2.3-litre Quad 4 with multi-port fuel injection or smooth 3.3-litre V-6 with multi-port fuel injection.

Whichever you choose, you will find yourself behind the wheel of an automobile very much in the Buick tradition of quality and quiet dependability.

All the Skylarks offer comfort and luxury as well, including tinted glass, full carpeting and smooth DynaRide® suspension (Gran Touring suspension on the Gran Sport Coupe).

The Skylark Custom Sedan, the Skylark Limited Edition Sedan and the Skylark Sedan shown here all feature ETR® AM-FM stereo with seek and scan and digital clock.



Cruise control is an available feature on Skylark to make highway trips easy.



Whether you are at the sporting end of the Skylark spectrum in the Gran Sport, or the more practical end with the Skylark Coupe, you are in an automobile that turns interior space into comfort and pleasure for you and your passengers.

Inside and out, the Gran Sport is all business, from the front air dam, black moldings and Shelby aluminum wheels to the reclining bucket seats and leather-wrapped steering wheel.

The Skylark Coupe represents competence and quality. Front disc brakes, automatic transmission and an automatic front safety belt system for driver and right front passenger make it responsive and reassuring to drive.



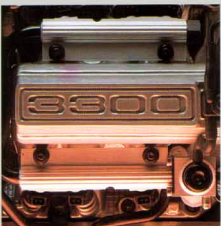
Available aluminum wheels provide the Skylark with special styling appeal.



The Gran Sport Coupe brings exciting, sporty style to the Skylark's comfort and quality. Handsome, stylish and all Buick. That's the Skylark Custom Coupe.



Adjust your driving position six ways with the available power-adjustable seat in Skylark.



The 3300 V-6 engine available on Skylark provides smooth acceleration in town and on the road.

Skylark Custom and Gran Sport Coupes offer the convenience of an easy-entry front passenger seat.





The Skylark is an investment in lasting enjoyment and enduring satisfaction. It starts from the inside, with premium-quality accommodations.

Handsome velour upholstery is in every Skylark and either a 4-way manual or 6-way power



The Skylark instrument panel is stylish, easy to use and full of easy-to-read information.

adjustable driver's seat is available in all models except the standard Skylark Coupe and Sedan.

The Custom, Limited and Gran Sport offer a split, fold-down rear seatback which allows for transporting long, oversize objects. It also offers easy access to the trunk from inside.

Every Skylark is a premium-quality automobile with convenience and comfort built in.



Skylark's split, fold-down rear seat lets you carry oversize objects or reach into the trunk from the passenger compartment.



## CENTURY

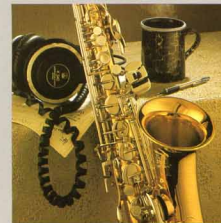
The beauty of the Buick Century® is not just its styling and comfort. It is also in the way Century delivers real value along with proven Buick quality.

entry system, the convenience of remote radio controls on the steering wheel hub, and more.

Century. American quality has never looked — or felt — better.



This family of roomy 6-passenger automobiles is available as coupe, sedan or wagon in Custom or luxurious Limited trim. All Century models are loaded with the things that make Buick ownership a pleasure.



The standard 2.5-litre Tech IV engine has brisk performance, and the available 3300 V-6 with multi-port fuel injection offers additional power.

Now you can even order the available luxury of remote keyless







The Century is solid, responsive and comfortable, in the Buick tradition.

The smooth, responsive DynaRide® suspension on the coupe and sedan and the heavy-duty suspension on the station wagon make them a pleasure on the road. Plus Century's refined appearance, with new crystal-lens parking and turn-signal lamps, new front styling and tail lamp treatment, makes it a pleasure to behold.

Comfort and convenience features like air conditioning, dual outside mirrors with remote control on the driver's side and automatic front safety belt system, make it a pleasure to drive, too.

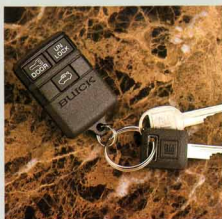
And whether you are attracted to the coupe, sedan or station wagon, you're looking at the quality of the Century.



Analog gauges include voltmeter and coolant temperature. They are standard on Century Limited models.



Change sound settings without lifting your hand from the wheel with available steering-wheel-mounted radio controls.



Audiophiles know the superior sound quality of CD. It's available on any Century.

Century's available remote keyless entry system adds both convenience and security.



The Custom Coupe brings a special sporty style to the quality and comfort of the Century. Practicality with luxury and premium value. That's the unique appeal of the Century Limited Wagon.





**P**lush velour upholstery, cut-pile carpeting, tasteful looks and accents of burl vinyl woodgrain make the Century a very pleasing place to be.

Everything about it tells you the Century is a premium-quality American motorcar that is right for a brand-new decade.

Around you are comforts you have come to expect from Buick. Delco ETR® AM-FM stereo with



Control, comfort and ease of use are the guiding principles behind the design of the Century instrument panel.

seek and scan, and front and rear speakers is standard. A compact disc player is an available addition. Tinted glass and dual visor vanity mirrors are also standard.

Lockable storage compartments in the wagon cargo area help keep your valuables secure. And in the sedan even the trunk is fully trimmed for a neat, tailored look and protection for your luggage.



A handsome and functional design puts power window and power lock controls in a convenient door panel with theater lighting.

## ROADMASTER ESTATE WAGON



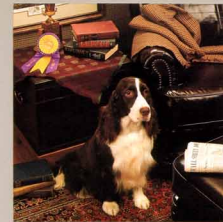
Every station wagon should be as comfortable, practical and capable as the new Roadmaster Estate Wagon.™

Since it is a Buick, the quality is built in, to make this Roadmaster a trusted member of the family for years to come.



The capabilities begin with the reliable power of its 5.0-litre V-8 fuel-injected engine. It is connected to a 4-speed overdrive automatic transmission which offers controlled, smooth shifts.

At the tailgate, a vast expanse of glass makes it easy for the driver to see behind the car. And that tailgate opens two ways for easy loading and unloading. Even the standard roof rack is adjustable for added convenience.





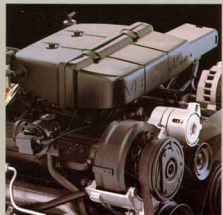


Unless you look back over your shoulder to the cargo area, there is nothing inside to remind you that this is a wagon.

The luxurious appointments and beautifully upholstered seats are in keeping with the Roadmaster heritage of comfort and luxury.

Standard features include a glass vista roof, reclining seatbacks, covered visor vanity mirrors for driver and passenger and an instrument panel that includes low-fluid warnings for oil, coolant, fuel and washer fluid.

For safety, there are lap and shoulder belts for driver and outboard passengers and there is also a Supplemental Inflatable Restraint system (air bag) built into the steering wheel hub for the driver.



The Roadmaster Estate Wagon is powered by a smooth, reliable 5.0-litre V-8 for excellent acceleration and pulling power.



Let the light in, but not the glare, with the Roadmaster Estate Wagon's standard tinted vista roof.

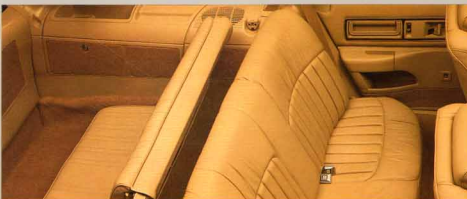


Hide your valuables under lock and key in the locking storage compartment of the Roadmaster Estate Wagon.

Integral with the glass vista roof is an adjustable roof luggage rack to add to the substantial usefulness of the Roadmaster Estate Wagon.



The Roadmaster Estate Wagon is sleek, substantial and equipped to haul big loads in comfort and luxury.



The vinyl third seat brings passenger capacity up to eight, or folds out of the way for cargo room. For maximum cargo capacity of 92.4 cubic feet, fold the second seat out of the way.





More important than luxury, perhaps, is convenience. The luxurious Roadmaster Estate Wagon is abundantly provided with features to make your driving easier and more pleasant.

Power windows, power door

are pockets in the front seatbacks, and in the cargo area there is additional lockable storage for your valuables.

That's because we believe convenience is a very important aspect of quality, and we take quality very seriously indeed.



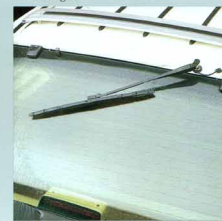
Complete, clear information is available from the Roadmaster Estate Wagon's analog gage cluster.

locks and tilt steering wheel are standard. Reading lights are built into the rearview mirror, at the side of the second seat, and integrated with the assist handles for third-seat passengers. The cargo area is also lighted.

Deep, rich cloth velour is standard in seating areas and the comfort of Sierra Ultra Soft leather with doeskin vinyl is available.

Storage compartments are built into front and rear doors, there

The convenience of a tailgate wiper and washer is standard on the Roadmaster Estate Wagon.

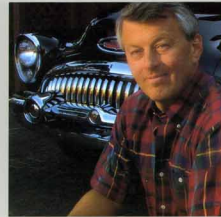




## ROADMASTER SEDAN

If you are one of the millions of Americans with a soft spot in your heart for the original Buick Roadmaster™ portholes and all, this is for you.

of modern technology. They are the best of both worlds, the classic and the modern eras of premium-quality American motorcars.



The new Buick Roadmaster and Roadmaster Limited 6-passenger sedans will be available in the spring of 1991 as 1992 models.

They are the rebirth of a classic, better than ever for the '90s.

On the one hand, they are big, spacious, comfortable and they are as solid as the original. On the other hand, they have been blessed with the finest fruits

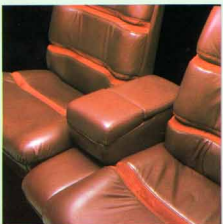




BUICK

PARK AVENUE





The available front-seat storage armrest can hold your traveling necessities.



Roadmaster's 5.7-litre V-8 provides smooth, proven power for this reborn American classic.

Buick's standard Supplemental Inflatable Restraint system (SIR) adds to driver safety.



**B**uicks have always been known for their smooth power and the 1992 Roadmaster Sedan, available in the spring of 1991, is no exception.

The powerplant is a proven 5.7-litre V-8 with electronic fuel injection, connected to a 4-speed automatic transmission with overdrive.

Shifts are smooth, acceleration is satisfyingly authoritative. The ride and handling are solid, with rear-wheel drive and DynaRide® suspension.

Anti-lock braking is standard, for improved steering control and stopping power in adverse conditions.

But for all its high-tech advantages, the Roadmaster remains true to the original: an automobile of unmistakable substance.



Roadmaster's standard anti-lock braking system (ABS) helps maintain steering control and stopping power in adverse road conditions.



Roadmaster is everything you remember about the classic Buick of the same name, plus the benefits of today's technology. Luxury, comfort, style and pure Buick quality make the Roadmaster a pleasure to own and drive.





If you ever rode in a Roadmaster, you will remember how well-equipped it was. The new Roadmaster continues the tradition.

The new Roadmaster. It's everything you remember, and some pleasures you have yet to discover.

For safety, there are lap and shoulder belts for driver and outboard passengers, plus a

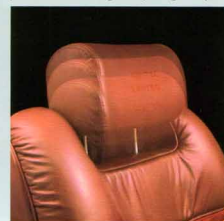


Complete information, quickly, is what the Roadmaster's analog instrument panel has to offer. It includes gauges for oil, coolant temperature, volts and a trip odometer.

Supplemental Inflatable Restraint system (air bag) for the driver.

Tilt steering column, twin reading lights built into the rearview mirror, cruise control, power windows, power door locks and remote trunk release are all standard for your convenience.

Six-way adjustable headrests are standard on the Roadmaster Limited Sedan so you can find a setting that's just right for you.

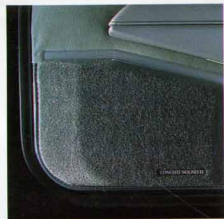


Standard upholstery is a deep, rich velour. Supple Ultra Soft leather in the seating areas is an available amenity in both the Roadmaster and Roadmaster Limited Sedan.

Buick has premium sound systems for your entertainment on the road. And refinements like the Concert Sound II speaker system, Delco/Bose Gold Series Music System, steering wheel controls and CD players are available for convenience and audiophile-level sound quality.



**Delco/Bose Gold Series Music System.** Available on Park Avenue and Riviera is an acoustically tailored, actively equalized sound system that combines easy use with exceptional sound. Dual front and rear speakers are specifically matched to the system. In Park Avenue and Park Avenue Ultra, sensors increase the volume as car speed increases, which allows you to set and forget the volume control.



**Concert Sound II speaker system.** The Concert Sound II speaker system provides rich, pure sound reproduction. Dual front extended-range woofer/tweeter units are matched by dual rear extended-range speakers to fill your Buick with resonant sound and a beautiful stereo experience. The available system is configured for the acoustics of the specific Buick in which it is installed.



**The available compact disc players.** There is a compact disc system available for most Buicks, to bring crisp, low-noise digital sound reproduction and the convenience of compact discs with you on the road.



**Available steering wheel controls.** Without lifting your hands from the steering wheel, you can operate your radio controls. It's easy to use the convenient rocker switches which feature backlighting for added convenience at night. Available on Regal and Century.

Towing a trailer can be enjoyable in your Buick. The smooth ride, satisfying power and ability to tow up to 5,000 pounds make taking it all with you a pleasure in a Buick.

#### SKYLARK

**Capacity: 1,000 pounds\***

Properly equipped, the Skylark will take you and your pleasures, treasures or needs wherever you want to tow them.

#### CENTURY, REGAL and LESABRE

**Capacity: 1,000 or 2,000 pounds\***

Or pick any of these Buicks, from the handsome, spacious Century to the full-size, 6-passenger LeSabre and (depending on how your car is equipped) you'll be able to pull 1,000 or 2,000 pounds of trailer in Buick luxury, comfort and style.

#### PARK AVENUE & PARK AVENUE ULTRA

**Capacity: 3,000 pounds\***

The most sophisticated 6-passenger sedans Buick has ever offered can tow up to a 3,000-pound load with grace and style. Standard 3800 V-6 power and automatic load-leveling make it easy.

#### ROADMASTER

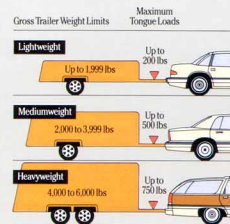
**Capacity: 5,000 pounds\***

The all-new 1991 Roadmaster Estate Wagon and Sedan can tow up to 5,000 pounds in the comfort of a reborn classic Buick. With rear-wheel drive, solid V-8 power and all the room, ride and luxury of a Roadmaster, trailering is a simple pleasure.

\*When properly equipped. Includes weight of trailer, cargo, passengers and equipment.

#### Classifications and load specifications.

Towing equipment requirements depend on the loaded weight of the trailer and the tongue load—the amount of weight transferred to the rear of the car by the hitch. Trailers are classified in the following categories:



**Ask your dealer before you tow.** For full information, please contact your Buick dealer. There are certain items or equipment required for maximum towing capacity with some models. In addition, there are laws, trailer-towing tips and safety information you should know. Ask your dealer for complete trailer towing information.

#### 1991 Buick Trailer Towing Requirements

	Engine	Final Drive Ratio	Maximum Gross Trailer Weight (lbs.)*	HD Engine and Transmission Cooling	Automatic Level Control or Air-Lift Shocks
<b>Skylark</b>	2.5L (L68) <sup>(1)</sup>	2.84	1,000 <sup>(2)</sup>		
	2.3L (LD2)	2.84	1,000 <sup>(2)</sup>		
	3.3L (LG7) <sup>(1)</sup>	2.39	1,000 <sup>(2)(3)</sup>		
<b>Century</b>	2.5L (LR8)**	2.84	1,000		
	3.3L (LG7)	2.73	1,000 <sup>(3)</sup> 2,000 <sup>(3)</sup>		
<b>Regal</b>	3.1L (LHO)	3.33	1,000 <sup>(2)</sup>		
	3.8L (L27)	3.06	2,000 <sup>(2)</sup>		
<b>LeSabre</b>	3.8L (LN3)	2.84 <sup>(4)</sup>	2,000 <sup>(2)</sup>	Required	Required
<b>Park Avenue Park Avenue Ultra</b>	3.8L (L27)	3.06 <sup>(4)</sup>	3,000 <sup>(2)</sup>	Required <sup>(4)</sup>	Standard
<b>1992 Roadmaster Sedan</b>	5.7L (LO5)	3.08 <sup>(4)</sup>	5,000	Recommended <sup>(4)</sup>	Recommended <sup>(4)</sup>
<b>Roadmaster Estate Wagon</b>	5.0L (LO3)	3.23 <sup>(4)</sup>	5,000	Recommended <sup>(4)</sup>	Recommended <sup>(4)</sup>

\*Trailer tongue load should be 10% of the maximum trailer weight but should not exceed the load rating specified for that vehicle, engine or hitch combination.

\*\*Not recommended on Century Wagon.

(1) Not recommended for trailer towing on long grades in unusually high temperatures.  
(2) Requires Class II frame-mounted trailer hitch.  
(3) Trailer towing in mountainous, high-temperature areas requires the installation of the Dunham-Bush Auxiliary Cooler (dealer installed).

(4) Included in required V92 Trailer Towing Package.  
Note: Riviera and Reatta models not recommended for trailer towing.

# BUICK BUYER'S GUIDE

Now that you have had time to learn about the proven quality and desirable features of the entire lineup, take a little more time to think about which Buick you might like to own and how you would like it equipped.

This Buyer's Guide is a convenient way to do that. It offers you a partial listing of standard and available comfort, convenience and performance features. Consider them and make note of the ones you'd like. Also consider and make note of tire, suspension and engine selections, as well as the interior trim level of your choice.

After noting your preferences, visit your Buick dealer. Learn how easy it can be for you to own a premium-quality American motorcar. Test-drive the Buick of your choice. When you do, you'll be rewarded with ample evidence of why Buick is the new symbol for quality in America.

## PARK AVENUE

### Model available:

- Park Avenue Sedan
- Park Avenue Ultra Sedan

### Standard equipment:

This is a partial list. See your dealer for details.

### Every Park Avenue features:

- 3800 V-6 with tuned-port injection
- Automatic transmission with overdrive (electronically controlled)
- Power front disc/rear drum brakes
- Anti-lock brake system
- Power steering
- DynaRide® 4-wheel independent suspension
- Electric rear-window defogger
- Electric door locks
- Electronic cruise control
- 2-speed windshield wipers with low-speed delay
- Automatic level control
- Air conditioning
- Power windows with driver's "express down" feature

- Solar control glass
- 55/45 front seats
- Manual front-seatback recliners
- 6-way power driver's seat
- PASS® Key theft-deterrent system
- Overhead console with front-seat reading lights and garage door opener storage
- 15" aluminum wheels (4)
- P205/70R15 steel-belted, radial-ply, all-season blackwall tires
- Supplemental front sunshades
- ETR® AM-FM stereo radio with seek and scan, clock and cassette player
- Driver's side Supplemental Inflatable Restraint system (SIR)
- Tilt steering column

### Additional Park Avenue Ultra features:

- Ultra leather/vinyl interior trim
- Leather-wrapped steering wheel
- Driver's lighted visor vanity mirror
- 6-way power passenger seat
- Power front-seatback recliners
- Special exterior paint treatment



- Specific grille
- Special color-keyed 15" aluminum wheels (4)
- Specific smoked tail lamp lenses
- Two rear-seat-passenger lighted vanity mirrors
- Dual automatic Comfortemp climate control
- Automatic day/night inside rearview mirror
- Twilight Sentinel headlamp control
- Driver's memory seat with memory mirrors
- Analog gauge cluster which includes oil-life monitor
- Reminder Package including: coolant, oil and windshield washer fluid level and door ajar
- 3,000-pound Trailer Towing Package
- Starter-interrupt theft-deterrent system

### Selected available equipment:

This is a partial list. See your dealer for details.

- Compact disc player
- Delco/Bose Gold Series music system with ETR® AM-FM stereo and cassette
- Vinyl top
- Dual automatic Comfortemp climate control
- Cornering lamps
- Remote keyless entry system

**Engine:**  
■ 3800 engine  
Type V-6 with tuned-port injection  
170@4800  
220@3200

**Dimensions:**  
Inches unless otherwise noted

Sedans

<b>Overall</b>	
Length	205.3
Width	74.9
Height	55.7
Wheelbase	110.8
Front tread	60.5
Rear tread	60.2

<b>Interior front</b>	
Legroom	42.0
Headroom	38.8
Shoulder room	59.1
Hip room	55.1

<b>Interior rear</b>	
Legroom	41.6
Headroom	37.9
Shoulder room	58.9
Hip room	54.3

<b>Trunk capacity</b> cu ft	20.3
<b>Fuel tank capacity</b> gal	18.0

## RIVIERA

### Model available:

- Riviera Coupe

### Standard equipment:

This is a partial list. See your dealer for details.

### Every Riviera features:

- 3800 V-6 with tuned-port injection
- Automatic transmission with overdrive (electronically controlled)
- Anti-lock 4-wheel power disc brake system
- Power steering
- DynaRide® 4-wheel independent suspension
- Electronic touch climate control air conditioning
- Electronic instrumentation including speedometer, tachometer, volt, oil, coolant and fuel gages, low-fuel, low-washer fluid and low-oil indicators and trip odometer
- Automatic level control
- Tilt steering column
- Operating console with armrest



- Electronic cruise control
- Electric rear-window defogger
- Electric door locks
- Power windows with floodlit controls
- Soft-Ray tinted glass
- ETR® AM-FM stereo radio with seek and scan and clock, cassette tape player with auto reverse, search and repeat, Concert Sound speakers
- Reclining front bucket seats
- Electric trunk lock release
- 2-speed windshield wipers with low-speed delay
- Body-color door edge guards
- 15-inch wheels and whitewall tires
- Leather-wrapped steering wheel with Supplemental Inflatable Restraint system (SIR)

- Deluxe trunk trim
- PASS Key® theft-deterrent system
- Coach lamps
- Custom locking wire wheelcovers
- Cornering lamps

### Selected available equipment:

This is a partial list. See your dealer for details.

- ETR® AM stereo-FM stereo radio with compact disc player, cassette tape player and graphic equalizer. (Receives C-Quam® AM stereo broadcasts. Most AM stations across the country broadcast in C-Quam but some do not. Check your local stations for compatibility in your area.)
- Delco/Bose Gold Series music system

- with ETR® AM stereo-FM stereo radio (receives C-Quam) cassette, and compact disc player
- 14-way adjustable driver bucket seat
- 6-way power front passenger seat with recliner
- Electric trunk pull down
- Remote keyless entry system with automatic door locks
- Twilight Sentinel headlamp control
- Automatic day/night inside rearview mirror
- Gran Touring Package
- Astroroof
- Landau top
- Lower accent paint
- Riviera Appearance Package
- 15" aluminum wheels (4)

### Engine:

■ 3800 engine  
Type V-6 with tuned-port injection  
170@4800  
220@3200

Horsepower  
Torque

**Dimensions:**  
Inches unless otherwise noted

Coupe

<b>Overall</b>	
Length	198.3
Width	71.7
Height	53.6
Wheelbase	108.0
Front tread	59.9
Rear tread	59.9

<b>Interior front</b>	
Legroom	42.7
Headroom	37.8
Shoulder room	57.9
Hip room	55.9

<b>Interior rear</b>	
Legroom	35.6
Headroom	37.8
Shoulder room	57.4
Hip room	55.4

<b>Trunk capacity</b> cu ft	14.4
-----------------------------	------

<b>Fuel tank capacity</b> gal	18.8
-------------------------------	------

## REATA

### Models available:

- Reatta Coupe
- Reatta Convertible

### Standard equipment:

This is a partial list. See your dealer for details.

### Every Reatta features:

- 3800 V-6 with tuned-port injection
- Stainless steel exhaust system with dual outlets
- Automatic transmission with overdrive (electronically controlled)
- Anti-lock 4-wheel power disc brake system
- Fast-ratio power steering
- Independent 4-wheel Gran Touring suspension
- Electronic touch climate control air conditioning
- Electronic instrumentation including speedometer, tachometer, volt, oil, coolant and fuel gages, low-fuel, low-washer fluid and low-oil indicators and trip odometer

- Heavy-duty battery
- Front and rear stabilizer bars
- Tilt steering column
- Leather-wrapped steering wheel with Supplemental Inflatable Restraint system (SIR)
- Operating console with armrest
- Electronic cruise control
- Electric rear-window defogger
- Power windows with floodlit controls
- Soft-Ray tinted glass
- ETR® AM stereo-FM stereo radio with seek and scan, graphic equalizer, cassette tape player with auto reverse, search/repeat, clock, 6-speaker Concert Sound speakers and automatic power antenna. (This unit receives C-Quam® AM broadcasts. Most AM stereo stations across the country broadcast in C-Quam but some do not. Check with your local stations for compatibility in your area.)
- Front and side window defogger outlets
- Door courtesy and warning lights
- Manual reclining bucket seat with leather in the seating areas

- 6-way power seats
- Electric trunk lock release
- 2-speed windshield wipers with low-speed delay feature
- 16" aluminum wheels (4)
- P215/60R16 steel-belted, radial-ply Goodyear Eagle GA blackwall tires
- Retractable dual headlamps
- Anti-slip front carpet savers
- Electric fuel filler door release
- Twilight Sentinel headlamp control
- Cornering lamps
- Front fog lamps
- Rearview mirror with front-seat reading lights
- Deluxe black, electric, outside rearview mirrors (left and right remote) left heated
- Clearcoat paint with chip-resistant primer
- Lockable rear floor storage compartments (2)
- Extendible slide-out sunshades
- PASS Key® theft-deterrent system
- Interior, lockable trunk access door (Coupe)

- Remote keyless entry system with automatic door locks
- Retained accessory power
- Lighted visor vanity mirrors (driver and passenger)
- Body accent stripes

### Selected available equipment:

- Electric sliding steel Astroroof
- 16-way adjustable driver's seat
- Compact disc player

### Engine:

■ 3800 engine  
Type V-6 with tuned-port injection  
170@4800  
220@3200

Horsepower  
Torque

**Dimensions:**  
Inches unless otherwise noted

Coupe Convertible

<b>Overall</b>		
Length	183.5	183.5
Width	73.0	73.0
Height	51.2	51.2
Wheelbase	98.5	98.5
Front tread	60.3	60.3
Rear tread	60.3	60.3

<b>Interior</b>		
Legroom	43.1	43.1
Headroom	36.9	36.9
Shoulder room	57.0	57.0
Hip room	53.9	53.9

<b>Trunk capacity</b> cu ft	10.5	10.0
-----------------------------	------	------

<b>Fuel tank capacity</b> gal	18.8	18.8
-------------------------------	------	------



## REGAL

### Models available:

- Regal Custom Coupe
- Regal Custom Sedan
- Regal Limited Coupe
- Regal Limited Sedan
- Regal Gran Sport Coupe
- Regal Gran Sport Sedan

### Standard equipment:

This is a partial list. See your dealer for details.

### Every Regal features:

- 3.1-litre V-6 with MPI (except GS)
- Automatic transmission with overdrive
- 4-wheel power disc brakes
- Power steering
- DynaRide® 4-wheel independent suspension (except Gran Sport)



- Soft-Ray tinted glass
- Tilt steering column
- ETR® AM-FM stereo radio
- Dual front and extended-range rear speakers
- Air conditioning
- Reclining 55/45 seats (except GS)
- Stainless steel exhaust system
- Clearcoat paint with Plastisol protection
- Sun visors with slide-out extensions
- Rear-seat heat ducts

### Additional Limited features:

- Specific reclining 55/45 front seats
- Plush carpeting
- Wide bright body-side moldings
- Crystalline tail lamp lenses (Coupe)
- Analog gage package

### Additional Gran Sport features:

- 3800 V-6 with tuned-port injection
- Gran Touring suspension
- Cloth reclining bucket seats and operating console with armrest
- Black wide body-side moldings (Coupe)
- Body-color grille (Coupe)
- Front air dam and aero rocker panels (Coupe)
- 16-inch aluminum wheels (4)
- P225/60R16 blackwall touring tires\*
- 2-tone paint (Sedan)
- Leather-wrapped steering wheel
- Analog gage package

\*Use of tire chains with this tire may cause damage to your car.

### Selected available equipment:

This is a partial list. See your dealer for details.

- 3800 V-6 with tuned-port injection
- Electronic cruise control
- Dual Comfortemp climate control
- Power windows
- Electric door locks

- Electric trunk lock release
- Rear-window defogger
- Gran Touring suspension
- Custom locking wire wheelcovers and 15" wheels
- Steering wheel with radio controls
- Anti-lock brake system
- Compact disc player
- Remote keyless entry system
- Four-Seater Package
- Gran Touring Package
- Sedan Sport Package
- Deck lid luggage rack
- Concert Sound speakers

### Engines:

- 3.1-litre engine
  - V-6 with MPI
    - Horsepower 140@4400
    - Torque 185@3200
  - 3800 engine
    - V-6 with tuned-port injection
      - Horsepower 170@4800
      - Torque 220@3200

Dimensions: Inches unless otherwise noted	Coupes		Sedans	
	Length	Width	Height	Wheelbase
Length	193.6	194.6	193.6	194.6
Width	72.5	70.9	72.5	70.9
Height	53.0	54.3	53.0	54.3
Wheelbase	107.5	107.5	107.5	107.5
Front tread	59.5	59.5	59.5	59.5
Rear tread	58.0	58.0	58.0	58.0

### Interior front

Legroom	42.3	42.4
Headroom	37.8	38.7
Shoulder room	57.6	57.8
Hip room	52.0	52.7

### Interior rear

Legroom	34.8	36.2
Headroom	37.1	37.8
Shoulder room	56.8	57.8
Hip room	53.1	53.2

Trunk capacity cu ft 15.6 15.8

Fuel tank capacity gal 16.5 16.5

## LE SABRE

### Models available:

- LeSabre Coupe
- LeSabre Custom Sedan
- LeSabre Limited Coupe and Sedan

### Standard equipment:

This is a partial list. See your dealer for details.

### Every LeSabre features:

- 3800 V-6 engine with SPI
- Automatic transmission with overdrive
- Power front disc/rear drum brakes
- Power steering
- Tilt steering column
- DynaRide® 4-wheel independent suspension
- Air conditioning
- Soft-Ray tinted glass
- Automatic safety belt system for driver and right front passenger
- ETR® AM-FM stereo radio with seek and scan, clock and extended-range speakers
- Rear-seat lap/shoulder belt system
- Bumper guards—front and rear
- Bumper protective strips

- Deluxe body-color mirrors (left remote, right manual)
- Lower body-side moldings
- Clearcoat paint with Plastisol protection
- Front-seat armrest
- Deluxe wheelcovers
- Trip odometer (except with gage cluster)

### Additional Limited features:

- Manual front seatback recliners
- 55/45 front seats with storage armrest
- LeSabre Limited interior trim

### Selected available equipment:

This is a partial list. See your dealer for details.

- Electronic cruise control
- Electric door locks
- Electric rear-window defogger
- 2-speed windshield wipers with low-speed delay
- ETR® AM-FM stereo radio with cassette tape player
- ETR® AM stereo-FM stereo radio with cassette and graphic equalizer. (Receives

C-Quam® AM stereo broadcasts. Most AM stations across the country broadcast in C-Quam but some do not. Check your local stations for compatibility in your area.)

- Power windows
- Electric trunk lock release
- Electronic touch climate control air conditioning
- Anti-lock brake system
- Quartz analog gage cluster
- Gran Touring Package includes 2.97 drive ratio, Gran Touring suspension, blackwall P215/65R15 tires, aluminum wheels, heavy-duty engine and transmission cooling, automatic level control and leather-wrapped steering wheel
- Aluminum wheels (4)
- Wire wheelcovers



- Automatic power antenna
- Heavy-duty engine and transmission cooling
- Deck lid luggage rack
- 6-way power driver seat
- Automatic level control
- Vinyl top
- Carpet savers
- Door edge guards
- Manual seatback recliners
- Lighted visor vanity mirror
- Concert Sound speakers

### Engines:

- 3800 engine
  - V-6 with SPI
    - Horsepower 165@4800
    - Torque 210@2000

Dimensions: Inches unless otherwise noted	Coupes		Sedans	
	Length	Width	Height	Wheelbase
Length	196.5	196.5	196.5	196.5
Width	72.4	72.4	72.4	72.4
Height	53.8	54.6	53.8	54.6
Wheelbase	110.8	110.8	110.8	110.8
Front tread	60.3	60.3	60.3	60.3
Rear tread	59.8	59.8	59.8	59.8

### Interior front

Legroom	42.4	42.4
Headroom	38.1	38.9
Shoulder room	59.0	59.5
Hip room	53.0	53.0

### Interior rear

Legroom	37.4	38.7
Headroom	37.6	38.3
Shoulder room	57.8	59.5
Hip room	54.5	56.0

Trunk capacity cu ft 15.7 16.4

Fuel tank capacity gal 18.0 18.0

## SKYLARK

### Models available:

- Skylark Coupe and Sedan
- Skylark Custom Coupe and Sedan
- Skylark Gran Sport Coupe
- Skylark Luxury Edition Sedan

### Standard equipment:

This is a partial list. See your dealer for details.

### Every Skylark features:

- 2.5-litre Tech IV with EFI
- Automatic transmission
- Power front disc/rear drum brakes
- Power steering
- Soft-Ray tinted glass
- Clearcoat paint with Plastisol protection
- ETR® AM-FM stereo radio
- Split bench front seat
- DynaRide® suspension (except GS)
- 14" wheels and tires

### Additional Custom features:

- Split folding rear seatback
- Reclining split bench seat with armrest

Dimensions: Inches unless otherwise noted	Coupes		Sedans	
	Length	Width	Height	Wheelbase
Length	193.6	194.6	193.6	194.6
Width	72.5	70.9	72.5	70.9
Height	53.0	54.3	53.0	54.3
Wheelbase	107.5	107.5	107.5	107.5
Front tread	59.5	59.5	59.5	59.5
Rear tread	58.0	58.0	58.0	58.0

### Interior front

Legroom	42.3	42.4
Headroom	37.8	38.7
Shoulder room	57.6	57.8
Hip room	52.0	52.7

### Interior rear

Legroom	34.8	36.2
Headroom	37.1	37.8
Shoulder room	56.8	57.8
Hip room	53.1	53.2

Trunk capacity cu ft 15.6 15.8

Fuel tank capacity gal 16.5 16.5



- Remote fuel filler door release
- Passenger visor vanity mirror
- Reclining driver/passenger seatback
- Easy-entry front passenger seat (Coupe)

### Additional Luxury Edition Sedan features:

- Wide lower body-side moldings
- Wheel opening and wide rocker panel moldings
- Whitewall tires and wire wheelcovers
- Full formal vinyl top
- Lower body accent paint

### Additional Gran Sport features:

- Front air dam
- Reclining cloth bucket seats

Dimensions: Inches unless otherwise noted	Coupes		Sedans	
	Length	Width	Height	Wheelbase
Length	193.6	194.6	193.6	194.6
Width	72.5	70.9	72.5	70.9
Height	53.0	54.3	53.0	54.3
Wheelbase	107.5	107.5	107.5	107.5
Front tread	59.5	59.5	59.5	59.5
Rear tread	58.0	58.0	58.0	58.0

### Interior front

Legroom	42.3	42.4
Headroom	37.8	38.7
Shoulder room	57.6	57.8
Hip room	52.0	52.7

### Interior rear

Legroom	34.8	36.2
Headroom	37.1	37.8
Shoulder room	56.8	57.8
Hip room	53.1	53.2

Trunk capacity cu ft 15.6 15.8

Fuel tank capacity gal 16.5 16.5

## CENTURY

### Models available:

- Century Custom Coupe
- Century Custom Sedan
- Century Custom Wagon
- Century Limited Sedan
- Century Limited Wagon

### Standard equipment:

This is a partial list. See your dealer for details.

### Every Century features:

- 2.5-litre Tech IV with EFI
- Automatic transmission
- Power front disc/rear drum brakes
- Power steering
- Air conditioning
- Soft-Ray tinted glass
- ETR® AM-FM stereo radio with seek and scan and clock
- Deluxe, black, outside mirrors (left remote, right manual)
- Notchback bench front seat with armrest
- Steel-belted, radial-ply, all-season whitewall tires

- Clearcoat paint with Plastisol protection
- DynaRide® suspension (Coupe/Sedan)

### Additional Limited features:

- Front-door courtesy and warning lights
- Black, lower body-side moldings
- 55/45 notchback seats with storage armrest
- Instrument gages
- Dual-color accent stripes

### Additional Wagon features:

- Carpeted load floor area
- Split folding rear seatback
- Lockable load-area storage compartments
- Roof rack (Wagon)
- ETR® AM-FM stereo radio with cassette tape player
- Steering wheel with radio controls
- Compact disc player
- Remote keyless entry system
- Electric door locks
- Power windows
- Electric rear-window defogger
- Electric trunk lock release
- Electronic cruise control
- Vinyl third seat (Wagon)
- Air deflector (Wagon)
- Woodgrain vinyl applique (Wagon)
- Tailgate window washer and wiper (Wagon)

### Selected available equipment:

This is a partial list. See your dealer for details.

- 3300 V-6 with MPI
- Automatic transmission with overdrive
- Tilt steering column
- 2-speed windshield wipers with low-speed delay

- Roof rack (Wagon)
- ETR® AM-FM stereo radio with cassette tape player
- Steering wheel with radio controls
- Compact disc player
- Remote keyless entry system
- Electric door locks
- Power windows
- Electric rear-window defogger
- Electric trunk lock release
- Electronic cruise control
- Vinyl third seat (Wagon)
- Air deflector (Wagon)
- Woodgrain vinyl applique (Wagon)
- Tailgate window washer and wiper (Wagon)

### Engines:

- 2.5-litre Tech IV engine
  - L-4 with EFI
    - Horsepower 110@5200
    - Torque 135@3200
  - 3300 engine
    - V-6 with MPI
      - Horsepower 160@5200
      - Torque 185@2000

- Electronic cruise control
- ETR® AM-FM stereo radio with cassette tape player
- Electric door locks
- Power windows
- Trunk lock release
- Gran Touring Package
- Anti-lock brake system (Gran Sport)
- 6-way power driver seat
- Carpet savers
- Electric rear-window defogger
- Aluminum wheels (4)

### Engines:

- 2.5-litre Tech IV engine
  - L-4 with EFI
    - Horsepower 110@5200
    - Torque 135@2000
  - 2.3-litre DOHC Quad 4 engine
    - DOHC Quad 4
      - Horsepower 160@6200
      - Torque 155@5200
  - 3300 engine
    - V-6 with MPI
      - Horsepower 160@5200
      - Torque 185@2000

### Selected available equipment:

- This is a partial list. See your dealer for details.
- 2.3-litre DOHC Quad 4
- 3300 V-6 with MPI
- Air conditioning
- Tilt steering column



Dimensions:  
Inches unless  
otherwise noted

Overall	Sedans		Wagons	
	Length	Width	Height	Wheelbase
Length	189.1	190.9	189.1	190.9
Width	69.4	69.4	69.4	69.4
Height	54.2	54.2	54.2	54.2
Wheelbase	104.8	104.8	104.8	104.8
Front tread	58.7	58.7	58.7	58.7
Rear tread	56.7	56.7	56.7	56.7

### Interior front

Legroom	42.1	42.1
Headroom	38.6	38.6
Shoulder room	56.2	56.2
Hip room	52.4	52.4

Trunk capacity cu ft 16.2 —

Fuel tank capacity gal 15.7 15.7

Dimensions:  
Inches unless  
otherwise noted

Overall	Coupes		Sedans	
	Length	Width	Height	Wheelbase
Length	180.0	180.0	180.0	180.0
Width	66.6	66.6	66.6	66.6
Height	52.1	52.1	52.1	52.1
Wheelbase	103.4	103.4	103.4	103.4
Front tread	55.6	55.6	55.6	55.6
Rear tread	55.2	55.2	55.2	55.2

### Interior front

Legroom	42.9	42.9
Headroom	37.7	37.7
Shoulder room	54.6	54.3
Hip room	48.8	48.8

### Interior rear

Legroom	34.3	34.3
Headroom	37.1	37.1
Shoulder room	55.2	54.1
Hip room	50.4	

## ROADMASTER ESTATE WAGON

### Model available:

- Estate Wagon

### Standard equipment:

- This is a partial list. See your dealer for details.
- 5.0-litre V-8 with TBI
  - Automatic transmission with overdrive
  - Power front disc/rear drum brakes
  - Anti-lock brake system
  - Power steering
  - Steering wheel with Supplemental Inflatable Restraint system (SIR)
  - Air conditioning
  - 2-speed windshield wipers with low-speed delay
  - Power windows with driver's "express down" feature
  - Dual-function convenience net
  - Carpeted load area
  - Vinyl third seat
  - Soft-Ray tinted glass
  - Clearcoat paint
  - Front-seat reading lights
  - Tungsten-halogen headlamps
  - Load compartment light

- Deluxe, outside, rearview mirrors (left remote, right manual)
- ETR® AM-FM stereo with seek and scan and clock
- 55/45 notchback front seats with armrest
- Manual front seatback recliners
- Rear-seat lap/shoulder belt system
- Lockable storage compartments
- Rear-door child security latches
- 2-way tailgate with rear wiper system
- Tilt steering column
- Aluminum wheels (4)
- Whitewall tires
- Adjustable roof rack
- Vista roof with tinted glass
- Woodgrain vinyl applique
- Tachometer
- Low-fuel indicator

### Selected available equipment:

- This is a partial list. See your dealer for details.
- 6-way power driver's seat
  - Electric door locks
  - Electronic cruise control
  - ETR® AM-FM stereo radio with cassette tape player
  - ETR® AM stereo-FM stereo radio with cassette and graphic equalizer.
  - Lockable storage compartments
  - Rear-door child security latches
  - 2-way taillight with rear wiper system
  - Tilt steering column
  - Aluminum wheels (4)
  - Whitewall tires
  - Adjustable roof rack
  - Vista roof with tinted glass
  - Woodgrain vinyl applique
  - Tachometer
  - Low-fuel indicator



### Engine:

- 5.0-litre engine
  - V-8 with electronic fuel injection
- Horsepower 170@4200  
Torque 255@2400

### Dimensions:

Inches unless otherwise noted	Wagon	Wagon
<b>Overall</b>		
Length	217.7	38.0
Width	78.9	39.6
Height	60.1	63.5
Wheelbase	115.9	57.1
Front tread	62.1	
Rear tread	64.1	
<b>Interior front</b>		
Legroom	42.2	
Headroom	39.7	
Shoulder room	63.4	
Hip room	56.9	
<b>Interior rear</b>		
Legroom	42.2	
Headroom	39.7	
Shoulder room	63.4	
Hip room	56.9	
<b>Fuel tank capacity</b> gal	22.0	
<b>Rear tailgate opening</b>	width 48.7	height 27.1
<b>Maximum cargo length at floor</b>	84.5	

- Cornering lamps
- Twilight Sentinel headlamp control
- Trailer Towing Package
- Leather and vinyl interior trim
- Remote keyless entry
- Cargo security cover
- Trailer Towing Package (5,000 pounds capacity)
- Self-seal tires (Limited)
- Landau vinyl top
- Leather with vinyl interior trim
- Compass
- Leather and vinyl interior trim
- Automatic trunk pull-down (Limited)
- Twilight Sentinel headlamp control (Limited)
- Cornering lamps (Limited)

### Engine:

- 5.7-litre engine
  - V-8 with electronic fuel injection
- Horsepower 180@4200  
Torque 290@2400

### Selected available equipment:

- This is a partial list. See your dealer for details.
- Compact disc player, graphic equalizer
  - Premium speakers

### Additional Limited features:

- Electronic touch climate control air conditioning
- ETR® AM-FM stereo with seek and scan, clock and cassette
- Automatic power antenna
- Automatic electric door locks
- 6-way manual front-seat headrests
- Electroluminescent coach lamps
- Door courtesy and warning lights



## FOR YOUR FINAL CONSIDERATION:

### Occupant protection

- Automatic safety belt system for driver and right front passenger (Skylark, Century, Regal, LeSabre), or Supplemental Inflatable Restraint, driver only, with manual lap/shoulder safety belts for the driver and right front passenger (Park Avenue, Riviera, Reatta, Roadmaster), both including visual and audible warning system.
- Manual lap/shoulder safety belts, outboard rear seat positions
- Manual lap safety belts, center front/rear seat positions, where applicable
- Energy-absorbing steering column

- Energy-absorbing instrument panel
- Energy-absorbing seatback tops, front
- Interlocking door latches
- Side-guard door beam
- Passenger-guard inside door lock handles
- Inertia-locking, folding front seatbacks, 2-door models
- Safety armrests
- Head restraints, driver and right front passenger (adjustable or integral)
- Break-away inside rearview mirrors
- Security door lock and door retention components
- Pressure-lock radiator cap

- Tempered safety glass, side windows; also rear windows
- Dual sun visors

### Accident avoidance

- Side marker lamps and reflectors
- Parking lamps that illuminate with headlamps
- Four-way hazard warning flashers
- Backup lamps
- Center high-mounted stop lamp
- Directional signal control with lane-change feature
- Windshield defroster, washer and multi-speed wipers
- Inside rearview mirror
- Outside left rearview mirror (right mirror where applicable)
- Starter safety switch

- Brake system with dual master cylinder and warning light
- Dual-action hood latch (front-opening-hood vehicles)
- Low-glare finish on inside windshield moldings, wiper arms and blades, metallic steering wheel surfaces
- Illuminated heater and defroster controls
- Illuminated windshield wiper and washer controls (if on instrument panel)
- Tires with built-in tread wear indicators
- Safety road wheel rims
- Pressure-relief fuel cap
- Audible brake lining wear indicators, disc brakes

## ROADMASTER SEDAN

### Models available:

- Roadmaster Sedan
- Roadmaster Limited Sedan

### Standard equipment:

- This is a partial list. See your dealer for details.

### Every Roadmaster features:

- 5.7-litre V-8 with TBI
- Automatic transmission with overdrive
- Power front disc/rear drum brakes
- Anti-lock brake system
- Power steering
- Tilt steering column
- DynaRide® suspension
- Air conditioning
- Soft-Ray tinted glass
- ETR® AM-FM stereo with seek and scan and clock
- Deluxe steering wheel with Supplemental Inflatable Restraint system (SIR)
- Rear-seat lap/shoulder belt system
- Deluxe body-color mirrors (left remote, right manual)
- Clearcoat paint with Plastisol protection

- Front- and rear-seat armrests
- Composite tungsten-halogen headlamps
- Whitewall tires
- Gage cluster with oil, coolant temperature, volts, trip odometer and tachometer
- Low windshield washer fluid, oil, coolant and fuel level indicators
- Power windows with driver's "express down"
- Rear-door child security latches
- Trunk convenience net
- 55/45 cloth front seats
- Electronic cruise control
- Snap-down front carpet savers

- Front-seat reading lights
- Electric outside rearview mirrors (heated left)
- Lighted visor vanity mirrors—driver and passenger
- Electric driver and passenger seatback recliners
- Remote keyless entry
- 6-way power seats—driver and passenger
- Variable-effort steering
- Front-seat storage armrest

- Trailer Towing Package (5,000 pounds capacity)
- Self-seal tires (Limited)
- Landau vinyl top
- Leather with vinyl interior trim
- Compass
- Leather and vinyl interior trim
- Automatic trunk pull-down (Limited)
- Twilight Sentinel headlamp control (Limited)
- Cornering lamps (Limited)

### Engine:

- 5.7-litre engine
  - V-8 with electronic fuel injection
- Horsepower 180@4200  
Torque 290@2400

### Selected available equipment:

- This is a partial list. See your dealer for details.
- Compact disc player, graphic equalizer
  - Premium speakers

### Dimensions:

Inches unless otherwise noted	Sedans
<b>Overall</b>	
Length	215.8
Width	78.1
Height	54.2
Wheelbase	115.9
Front tread	61.8
Rear tread	60.7
<b>Interior front</b>	
Legroom	42.2
Headroom	39.2
Shoulder room	63.4
Hip room	56.3
<b>Interior rear</b>	
Legroom	39.5
Headroom	38.8
Shoulder room	63.4
Hip room	63.4
<b>Trunk capacity</b> cu ft	21.0
<b>Fuel tank capacity</b> gal	23.0

### Important: A word about this catalog.

We have tried to make this catalog as comprehensive and factual as possible. We reserve the right, however, to make changes at any time, without notice, in prices, colors, materials, equipment, specifications, models and availability. Since some information may have been updated since the time of printing, please check with your Buick dealer for complete details.

### A word about engines.

Buicks are equipped with engines produced by different operating units of GM, its subsidiaries or suppliers to GM worldwide.

### A word about assembly of Buicks.

Buicks are assembled by different operating units of General Motors, its subsidiaries or suppliers to GM worldwide. Buicks incorporate thousands of components produced by different operating units of GM, its subsidiaries or suppliers to GM worldwide. We sometimes find it necessary to produce Buicks with different or differently sourced components than originally scheduled. All such

components have been approved for use in Buicks and will provide the quality performance associated with the Buick name. Since some options may be unavailable when your vehicle is assembled, we suggest that you verify that your vehicle includes the equipment you ordered, or if there are changes, that they are acceptable to you.

### A word about updated service information.

Buick regularly sends its dealers useful service bulletins about Buick products. Buick monitors product performance in the field. We then prepare bulletins for servicing our products better. Now you can get these bulletins, too. Ask your dealer. To get ordering information, call toll-free 1-800-551-4123.

### A word about corrosion protection.

Buicks are designed and built to resist corrosion. All body sheet metal components are warranted against rust-through corrosion for 6 years/100,000 miles. Application of additional rust-inhibiting materials is not required under the corrosion coverage.

### The GM Protection Plan.

It offers service protection in addition to that provided by GM's new-vehicle limited warranty. Coverage is currently available only in the USA and Canada for the 1991 model year. See your Buick dealer for details.

### A word about warranty.

The GM 3-year/50,000-mile BUMPER TO BUMPER PLUS WARRANTY covers repairs for any new Buick, including labor and parts, to correct any defects in material or workmanship occurring during the warranty period. The complete vehicle (except tires, which are covered by their manufacturer) will be covered for 3 years or 50,000 miles, whichever comes first. After the first year or 12,000 miles, there is a \$100 deductible per repair visit. Body sheet metal rust-through from corrosion is covered for 6 years or 100,000 miles, whichever comes first. There is no deductible for rust-through repairs. See your Buick dealer for terms of this limited warranty. Supplemental Inflatable Restraint coverage is 3 years regardless of mileage with no deductible.

### Buy or lease a Buick.

Many Buick dealers offer you the opportunity to buy or lease a Buick. Ask about SMARTLEASE™. It may be right for you.

### Buick Roadside Assistance.

It provides owners of 1991 Buicks with access to minor repairs or towing for disabled vehicles. It is reached through a toll-free telephone number and operates 24 hours a day, 365 days a year. Just call 1-800-252-1112. See your Buick dealer for details.

© 1990 General Motors Corporation. All Rights Reserved. Buick, Riviera, Reatta, Park Avenue, LeSabre, Regal, Century, Skylark and Ⓢ are registered trademarks of General Motors Corporation. Roadmaster and Roadmaster Estate Wagon are trademarks of General Motors Corporation.



Let's get it together... buckle up.



**BUICK®**

The New Symbol For Quality  
In America.