

# 1990 Oldsmobile

Troféo • Toronado • Touring Sedan

Ninety-Eight • Eighty-Eight • Custom Cruiser



You don't win new laurels by simply sitting on old ones. We know that. That's why we're never quite satisfied with the status quo. It's also why we're confident you'll find that the 1990 Oldsmobiles are the most advanced in our 92-year history.

These new Oldsmobiles are not only a step up, but also a step ahead. This is the New Generation of Oldsmobile.

The advances are many. Right down to the metal that forms the body. It's a special steel alloy, galvanized on two sides.



That, along with other extensive anti-corrosion measures, makes the new Oldsmobiles remarkably corrosion-resistant to water, salt and the other caprices of weather.

The automatic leveling system, standard on Toronado, Touring Sedan and Ninety-Eight, is controlled with electronic precision. An optocoupler with infrared beam senses any variation in the car's load. It signals a compressor to make the correction, providing a constantly level ride.

The paint, too, is special. Coat upon coat of high-gloss enamel is applied. Then it's all covered with a protective clear coat for a finish that looks a foot deep.

It's tough. It's dazzling. And it's designed to keep your car looking dazzling down the road.

But the new generation advancements become even more obvious when you slip inside. A Visual Information Center (VIC) is available in Toronado and Trofeo. Computer driven, it is capable of



storing and recalling up to 51 informative, full-color cathode ray tube displays.

User friendly, the VIC is completely integrated with the available mobile phone, an Olds exclusive, for memory speed dialing, automatic redialing, privacy/mute and more. It even allows hands-off operation.

Touring Sedan's standard touch-control steering wheel\* (far right) allows you to adjust the temperature, fan and stereo without removing your hands from the wheel.

Like \$50,000 road cars, every full-size Oldsmobile coupe and sedan has four-wheel independent suspension. Maneuverability is outstanding. Handling, precise. The ride, uncompromised.



To set it all in motion, the 3800 V6 engine, with sequential port fuel injection, 165 horsepower and 210 foot-pounds of torque. Acceleration is instantaneous. With a special balance shaft to help reduce vibration, it's also very smooth.

Just as important as acceleration is deceleration or braking. Oldsmobile provides it

# This is the New Generation of Oldsmobile.

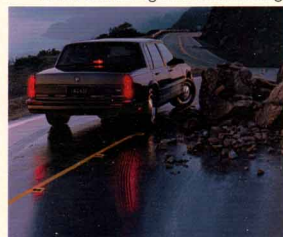


with an electronically controlled 4-wheel anti-lock brake system, standard on Trofeo and Oldsmobile Touring Sedan. This computer-controlled system helps provide steering control during braking under all manner of road and weather conditions. A remote control lock system is available to lock or unlock all doors and trunk. And you can do so from as far as thirty feet away. A convenience you'll appreciate the first time you have your arms full of groceries.

New for Toronado and Trofeo is an ignition key with anti-theft capabilities built in.



This anti-theft key has a tiny microchip embedded in the key to activate special sensors in the ignition switch before the car can be started. For the driver, nothing has changed. For a thief with an improper key, there is an immediate 4-minute delay before another attempt can be made. This is usually enough time delay to thwart most car theft attempts. That's comforting. And so is the long



list of protective features that are built into every Oldsmobile passenger car. Side guard beams are in all doors. The steering wheel is energy-absorbing. The windshield is laminated safety glass. An automatic safety belt system is provided for driver and right front passenger on most models. Toronado and Trofeo feature manual lap and shoulder

safety belts, along with a supplemental inflatable restraint (air bag) that is built into the steering wheel. Also available on Ninety-Eight and Eighty-Eight sedan models.

It's a good feeling to have an Oldsmobile around you. You'll have a good feeling about your Olds dealer, too. He has a variety of plans available to help make buying an Oldsmobile convenient. Or perhaps a GMAC SmartLease is right for you. In any case, your new Olds comes with a full tank of gas. You will also receive a set of emergency keys in a wallet-sized card and an Oldsmobile Owner Member Card for discounts on car rentals and resort condominiums, plus a free travel magazine subscription. It

comes with Bumperto-Bumper Plus, too, a 3-year/50,000-mile limited warranty\*\* that covers your entire Olds. Ask your

dealer for details. Then, be sure to take a test drive.

**BUMPERTO BUMPER PLUS**  
3 YEAR/50,000 MILE WARRANTY

\*Available on Ninety-Eight Regency. \*\*See your Oldsmobile dealer for terms and conditions of this limited warranty.





## Toronado Troféo

Slip behind the leather-wrapped steering wheel of the totally restyled Toronado Troféo and prepare your driver instincts for an emotional rush.

Imagine, for a moment, experiencing life in the fast lane of an autobahn. Or cornering through tight, switchback mountain curves. Or heading down a quiet residential boulevard, as your new Troféo treats it with convincing aplomb.

This is, after all, a driver's car. It is an uncommon driving experience, the direct result of some of the most serious automotive technology available today.

Fuel, for example, is injected directly and sequentially into each intake port—in exactly the right amount, at exactly the right instant—at every speed. A low-restriction exhaust system with twin tailpipes adds to Troféo's acceleration.

The result is performance that does the right foot proud. It is both strong and instantaneous. When you put your foot down, Toronado Troféo responds. Right now.

But the soul of the new, larger Troféo is its remarkable ride

and handling. Each wheel is fitted with its own individual suspension system. FE3 components are added for firmness and tuned with a deft touch. A fiberglass transverse leaf spring is incorporated. It serves as both spring and stabilizer, adding to riding

comfort and handling precision.

Head Troféo into a turn, and you find that lean and sway are virtually nonexistent. The car moves. You stay put.

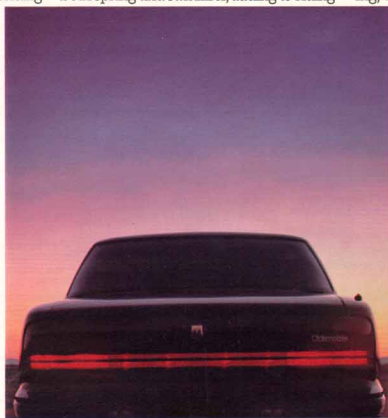
Rear struts utilize deflected-disc valving, which adjusts strut response to varying road conditions for impressive control. So you can take on virtually any road surface with complete confidence.

The leveling system uses an optocoupler with infrared beam to sense variations in the car's attitude and provide a constant level stance, automatically. So even if you load Troféo's new, larger trunk to the hilt, the ride remains smooth and level, without bottoming out on bumps.

The Troféo suspension is tuned like no other. As its lateral acceleration, the measure of how quickly a car can enter and take a turn, confidently verifies. Yet, Troféo truly rides like a dream.

But a driver's car is best evaluated by the seat of your pants.

Consider the invitation extended. Test drive the remarkably capable Oldsmobile Toronado Troféo. But first, buckle up.



Maybe you had  
better buckle up your  
emotions, too.











Tornado Trofeo

## You have been cleared for takeoff.

Slip into the Trofeo cockpit, and you surround yourself with the latest user-friendly sophistication—electronic communication that would do a corporate jet proud.

This is, after all, the age of information.

And Tornado Trofeo graciously provides it. An in-dash Driver Information System features a digital readout for driving range, distance to destination, miles per gallon, ETA and more at the touch of a finger.

With the available Visual Information Center (VIC), you soar into tomorrow. With its cathode ray tube screen on the instrument panel, you can view up to 51 useful, full-color displays, including compass for

navigating (shown), remaining oil life, all-systems status and phone number directory. The VIC is fully integrated with the available mobile phone, which provides memory speed dialing, hands-off operation, in-

car conference calls and much more.

And while Trofeo appeals to the mind, it does not neglect the body. Far from it. Seats are deeply cushioned and leather-covered in seating areas. Power controls

offer infinite adjustment of lumbar, back contour, thigh supports and reclining seat backs. You literally “design” the seats.

Now, buckle up and take off. You're going to love the in-flight service.



The future never looked better.







Oldsmobile



Toronado

## If you don't like the rules, change them.

For Oldsmobile Toronado, those have been words to live by, right from the start. The first Toronado, over two decades ago, created more than a stir. It wrote the book for a whole new automotive category. Toronado

was, in fact, the first contemporary personal luxury coupe with front-wheel drive.

Now a new generation Toronado is rewriting the rules. Because the new Toronado is even more personal—and a whole

lot more automobile. It is nearly a foot longer and has 2.5 cubic feet more luggage space than just a year ago. With its low stance, hide-away headlamps and dramatic new looks, personal luxury is in great new shape.

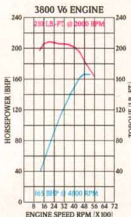
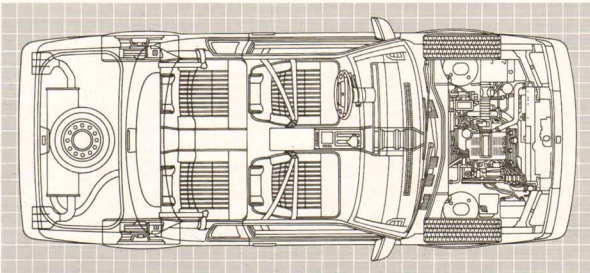
So is personal performance, because the new Toronado's 165-horsepower, 3800 V6 with SFI delivers enough low-end torque (210 foot-pounds at 2000 rpm) to have the neighbors asking, "What'll it do?"

Get behind the wheel of this impressive new personal performance luxury coupe. You'll quickly discover that with 4-wheel independent suspension system, automatic load level control, power rack-

and-pinion steering and 4-wheel disc brakes, the new generation Oldsmobile Toronado is both the exception and the rule.

See your Olds dealer for a test drive soon. There is certainly no rule against that.





Toronado Powertrain Specifications

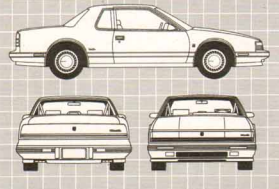
ENGINE	STANDARD
Displacement	3800 cc
Engine	V6
Break hp (rpm)	165 @ 4800
Net torque (lbs.-ft.)	210 @ 2000
Bore/Stroke (in.)	3.80/3.40
Compression ratio	8.5 to 1
Fuel management	Electronic Fuel Injection (Sequential port)
Fuel requirement	Unleaded regular
Cooling system (qt.)	11.97
DRIVE/CLINE	
Transaxle	4-speed overdrive automatic
SUSPENSION/HANDLING	
Front/Rear	4-wheel independent with automatic leveling system†
Front turning diameter, curb to curb (ft.)	39.4

If you care to methodically work your way through the impressive Troféo facts, figures and advancements, they are at your disposal. And we invite you to do so.

However, there is a better and far more memorable way to acquaint yourself with this great driver's car. And that's behind the steering wheel. In fact, if you're looking for some straight answers about agile handling and maneuverability, behind the wheel is the only place to ask.

□ 1. Toronado's available divided front bench seat in rich Prtmavera velour. A center armrest is included, front and rear. Reclining front bucket seats with console-

mounted shifter are standard. □ 2. Power controls for seat, windows and door locks in the driver's door. □ 3. The standard power controls that adjust lumbar support, back contour, side bolsters and reclining seat back on Troféo are located in the center console. □ 4. The leather-wrapped tilt steering wheel includes a supplemental inflatable restraint system that is standard on Toronado and Troféo. □ 5. Available Visual Information Center (VIC) can call up 51 informative displays. □ 6. The available mobile phone completely integrates with the VIC. It provides memory speed dialing,



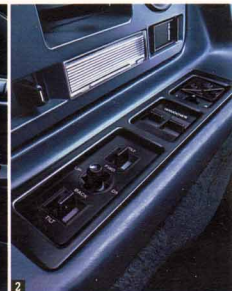
Toronado Dimensions

BODY/CHASSIS	COUPE
Wheelbase (in.)	108.0
Track, front/rear (in.)	59.9/59.9
Tire size	P205/75R15 or P215/60R16
Wheel size	15 x 6 or 16 x 7
Brake type, front/rear	Disc/Disc
Fuel tank (gals.)	18.0
EXTERIOR	
Length (in.)	200.3
Width (in.)	72.8
Height, curb (in.)	53.0
Curb weight (lbs.)	3454
INTERIOR	
Headroom, front/rear (in.)	37.8"/37.8"
Legroom, front/rear (in.)	42.7/35.7
Shoulder room, front/rear (in.)	58.3/57.5
Seating capacity	5
Trunk capacity (cu. ft.)	15.8

†Tires: \*Headroom is reduced when Astroval is ordered. †Anti-lock on Troféo.

†Tire: †Tire includes P23 with 16-inch wheels and Eagle GT performance tires.

automatic redialing, hands-off operation and more. □ 7. A Driver Information System is incorporated in the gauge clusters of Toronado and Troféo. It provides important driver information at the touch of a finger. □ 8. The 165-horsepower, 3800 V6 with SPI is standard in both Toronado and Troféo. □ 9. Twin exhaust tailpipes help reduce back pressure and further improve Troféo performance. □ 10. The anti-theft key is also standard. A tiny microchip in the key activates special ignition sensors before the car will start. Using an improper key causes a four-minute delay to help discourage theft. The remote control lock feature is standard on Troféo, available on Toronado. It locks or unlocks both doors and trunk lid from as far as thirty feet away.



# What advanced automotive technology is coming to.



**Touring Sedan** Challenging curves surrender almost too easily. Demanding mountain grades quickly lose their will and submit. And long distance trips seem to slip by almost too quickly.

This is the grand touring experience at the highest level. This is grand touring in the 1990 Oldsmobile Touring Sedan.

The heart of any road car is the suspension system. That's why the Touring Sedan features specially tuned FE3 Touring Car Ride and Handling components.

FE3 is the most sophisticated suspension system we offer. It brings together the advantages of MacPherson gas-filled front struts with 4-wheel independent suspension. Here each wheel has its own individual system to provide handling that is nimble and reassuringly predictable, while disarming and neutralizing any irregularities of the road.

Spring rates are increased. Bushings are firmer. Stabilizer bars are larger. Even the shock

absorber valving is more resilient.

What you experience in the Oldsmobile Touring Sedan is excellent cornering, with minimum heel and sway. Fast-ratio

steering control, smooth and pinpoint accurate. And a big, solid ride, sure and steady all the way on 16-inch aluminum-styled wheels and P215/60R16 steel-belted Eagle GT performance tires.

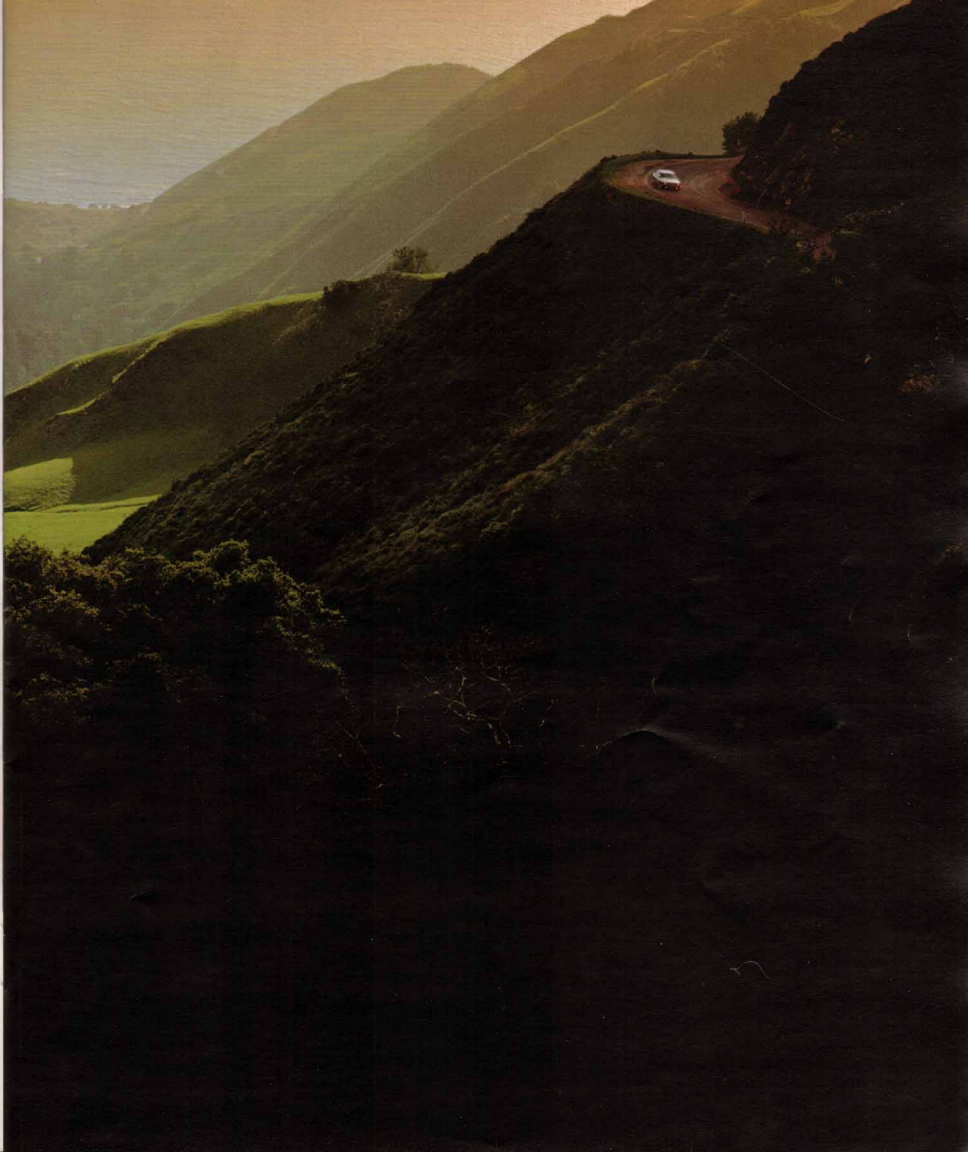
Those wheels, while admittedly handsome, are also highly functional. They reduce the unsprung weight of the vehicle, while helping to dissipate heat from the brakes, front and rear.

There is the 165-hp, 3800 V6 engine with sequential port fuel injection to quicken your pulse. And the computer-controlled four-wheel anti-lock braking system, among the most advanced in the industry, to slow it down.

We invite you to compare the remarkable new Oldsmobile Touring Sedan against the best foreign and domestic road cars that the world has to offer. However, after just a couple of miles behind that leather-wrapped steering wheel, you'll probably forget all about judging. More than likely, you'll just be sitting back and enjoying the drive of your life.

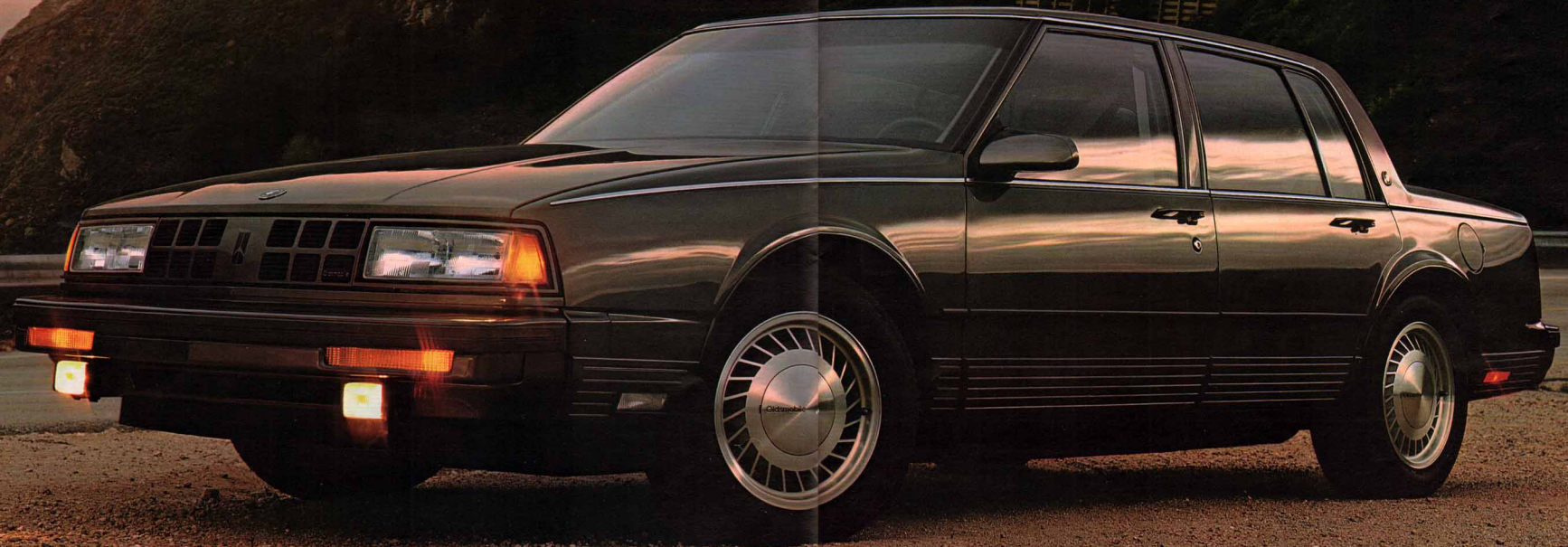


The grand touring experience was never more grand.





You've reached your destination. Pity.







Oldsmobile Touring Sedan

## Designed with the idea that you can never be too comfortable.

The deep cushioned Lear Siegler-designed front seats are covered with perforated leather in the seating areas. With eleven power adjustments, individual comfort and body support are outstanding.

At the touch of a finger, the driver or front passenger seat literally forms to your shape. Convenient console-mounted power controls provide infinite adjustment for the reclining seat backs, lumbar and thigh

supports, side bolsters and articulating headrests. So support and comfort are exactly to your liking. And you can tailor the adjustment as often as you wish—as you drive—for all-day comfort.

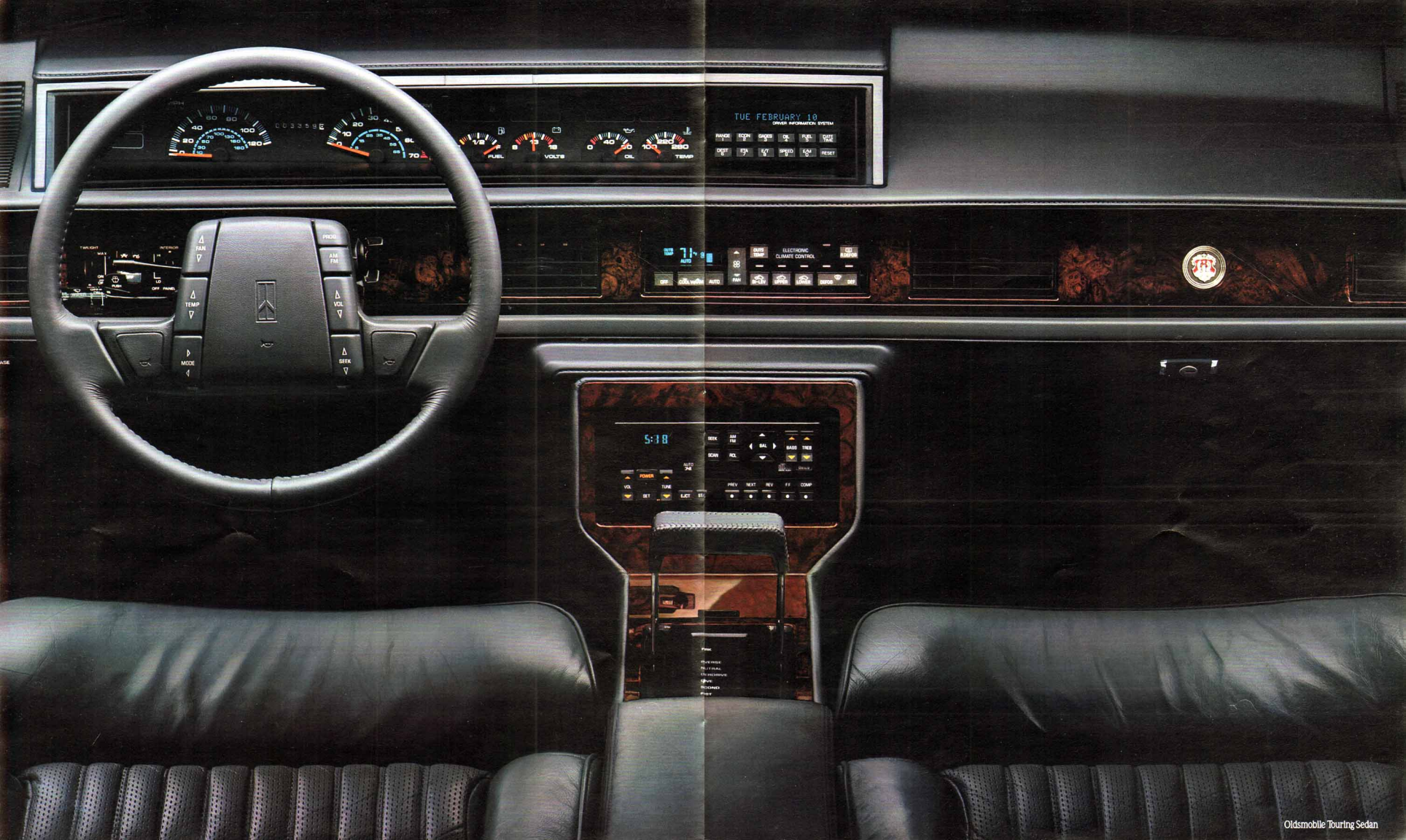
Now that you are comfortably settled in, enjoy the surroundings. Only a handful of world-class automobiles provide genuine wood. In Touring Sedan, it is burled walnut. Instrumentation is both precise and

complete, including tachometer and trip odometer. A Driver Information System is also provided for important trip information and service reminders. The leather-wrapped steering wheel adjusts to six different

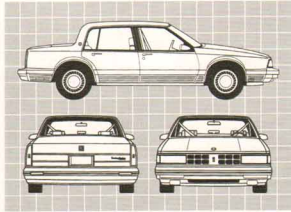
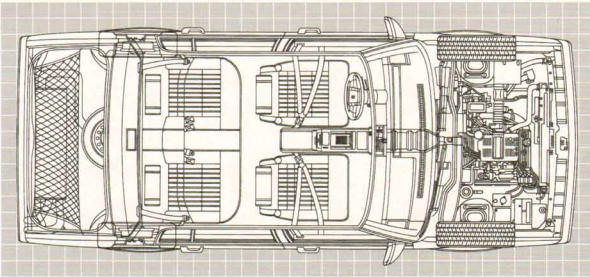
positions and features touch controls for the 6-speaker stereo and air conditioner.

Enjoy the exhilaration of world-renowned ride and handling soon. And do so in Touring Sedan's absolute comfort.



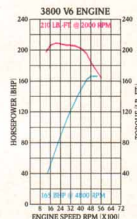






Oldsmobile Touring Sedan Dimensions

BODY/CHASSIS		SEDAN
Wheelbase (in.)		110.8
Track, front/rear (in.)		60.3/59.8
Tire size		P215/60R16
Wheel size		16 x 7
Brake type, front/rear	Anti-lock System	Disc/Drum
Fuel tank (gals.)		18.0
EXTERIOR		
Length (in.)		196.3
Width (in.)		72.6
Height, curb (in.)		54.8
Curb weight (lbs.)		3497
INTERIOR		
Headroom, front/rear (in.)		39.3/38.1*
Legroom, front/rear (in.)		42.4/41.5
Shoulder room, front/rear (in.)		58.9/58.8
Seating capacity		5
*Trunk capacity (cu ft.)		16.4
*Headroom is reduced when Astroroof is ordered.		



Oldsmobile Touring Sedan Powertrain Specifications

ENGINE	STANDARD
Displacement	3800 cc
Engine	V6
Brake hp (rpm)	165 @ 4800
Net torque (lbs. ft.)	210 @ 2000
Bore/Stroke (in.)	3.80/3.40
Compression ratio	8.5 to 1
Fuel management	Electronic Fuel Injection (Sequential port)
Fuel requirement	Unleaded regular
Cooling system (qt.)	11.7
DRIVE/LINE	
Transaxle	4-speed overdrive automatic
SUSPENSION/HANDLING	
Front/Rear	4-wheel independent with FE3 and automatic leveling system
Front turning diameter, curb to curb (ft.)	39.4

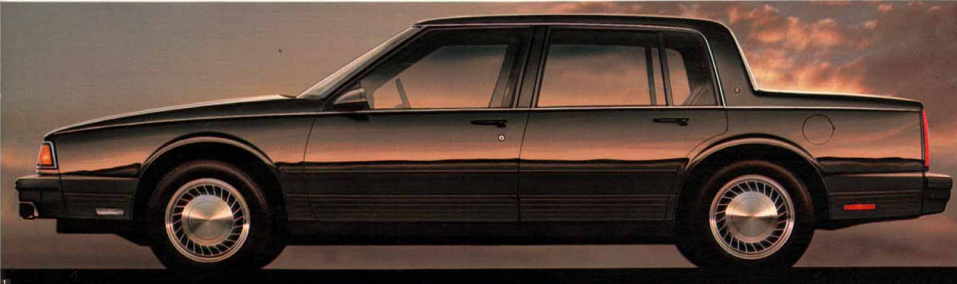
Oldsmobile Touring Sedan specifications and dimensions are indeed impressive. And we make them available so you can see for yourself how this great road car stacks up with the best the world has to offer. However, mere facts, no matter how impressive, can't take the place of a test drive.

- 1. The classic profile of Oldsmobile Touring Sedan, shown in Medium Slate Gray.
- 2. Four-wheel, anti-lock braking, one of the most advanced systems available today, is standard on Touring Sedan. It minimizes wheel

- lock during extreme braking conditions while allowing controlled steering.
- 3. Flush-mounted composite halogen headlamps and lay-down, cloisonne hood ornament for aerodynamic effects.
- Low-to-the-road foglamps feature clear lenses for improved visibility in foggy or inclement weather.
- 4. With the new "express open" feature, the available Astroroof opens posthaste.
- 5. The Driver Information System provides

- pertinent trip information like driving range, MPG, ETA, and service reminders like when to change oil.
- 6. Touring Sedan's remarkable front bucket seats. At the touch of a finger, each seat conforms to the contours of your body. Power lumbar, side bolsters, thigh supports, seat back recliner and headrest are all infinitely adjustable.
- 7. The 4-speed automatic overdrive transmission shifter is leather-wrapped, carefully stitched, and features a "basket handle" configuration. The center console offers more than a mere look of wood. It's the real thing. Genuine burled walnut.

Few cars look this good on paper in any language.





## Ninety-Eight Regency

A luxury car should not be measured merely by price or in pounds of chrome. It should be measured by how well it satisfies your needs for room and physical comfort, and how well it handles and drives.

On these counts, Oldsmobile's Ninety-Eight Regency does not disappoint. It is designed and built, in fact, to impress some very important people. Its owners.

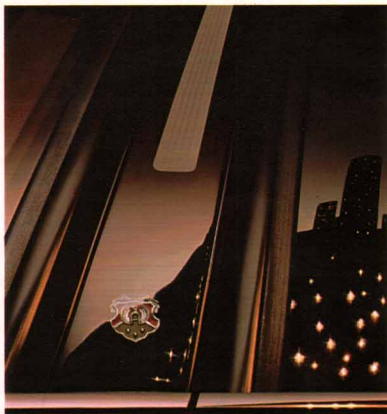
Once inside, you are immediately struck by the spaciousness. Legitimate room for six passengers. In most cars today, that is more than a tall order. It is literally a physical impossibility.

But it is *how* Ninety-Eight Regency effectively makes use of all that room that makes it especially impressive.

Regardless of your size, you feel like the interior was designed exactly for you. And it was. With its ergonomic "H-Point" design, a system of plotting all critical interior dimensions from where the hip and leg meet, Ninety-Eight can comfortably accommodate 95% of the world's drivers. And we mean comfortably.

A list of standard conveniences is as

long as your arm, and as near as the touch of a finger. Four-Season air conditioner. AM/FM stereo with extended range speakers. Controls for the power side windows and power door locks are mounted in the doors. A steering wheel with touch controls for climate and stereo is available.



Power rack-and-pinion steering, power front disc brakes, automatic overdrive transmission and powerful 3800 V6 with SFI—all standard on Ninety-Eight Regency.

Underneath it all is a luxury of another sort. A precise road management system, because a car of this stature deserves ride and handling to match.

Road imperfections go virtually unnoticed, neutralized by the 4-wheel independent suspension. Specially tuned, the ride is smooth and impressive, while crisp, precise handling is maintained.

An electronic leveling system maintains the car's attitude automatically, regardless of the number of passengers on board or luggage compartment load.

A 4-wheel anti-lock brake system is available. It provides confident stops and controlled steering, even during emergency braking situations.

Ninety-Eight Regency is a luxury car, pure and simple. You'll find it is unspoiled by ostentation or the starkness of some imports.

Ninety-Eight Regency's understated elegance compliments your good taste. While the price has some very nice things to say about your intelligence.

Today, it isn't  
how much you spend.  
It's how well.

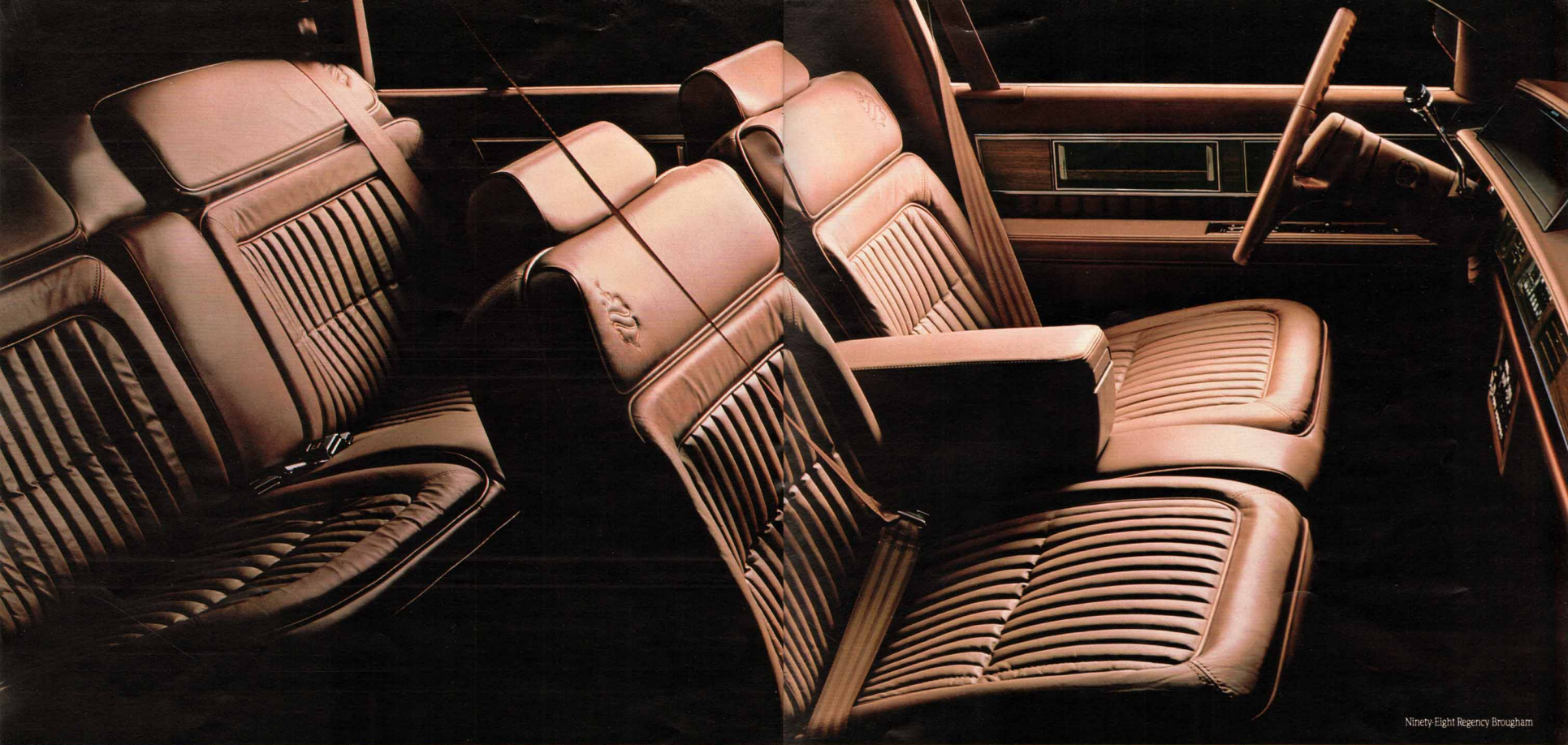




Understatement can say so much.







Ninety-Eight Regency Brougham

## The quiet comfort is designed in at highway speeds.

Set a car in motion, and you create a chain reaction of unwanted sounds. That's why the stylists and acoustical engineers team up in an effort to neutralize the effects of wind, road and engine noise on Ninety-

Eight Regency. Flush-mounted windows and headlamps, and rounded corners literally cheat the wind, reducing air turbulence. The suspension system is completely isolated from the passenger compart-

ment with special bushings and tuned body mounts. There is no metal-to-metal contact. Even tire tread is designed to reduce tire hum to a polite whisper. And the 165-horsepower, 3800 V6 engine with SFI

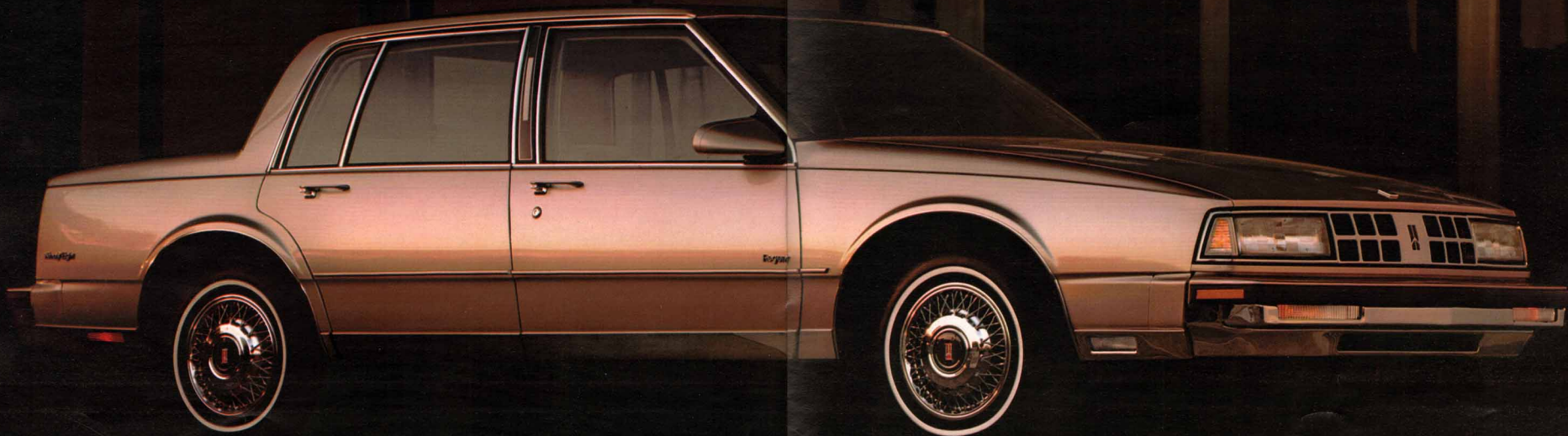
and quieting balance shaft, is so precisely designed that its purr belies its awesome power. Even sounds and vibrations inaudible to the human ear have been eliminated. All to help you enjoy the tasteful ele-

gance and remarkable comfort of the Ninety-Eight Regency Brougham. Settle back in the deep-cushion comfort of the divided front seat, while you enjoy the stirring sound of extended range speakers,

uninterrupted by extraneous noise.

Air conditioner, tilt steering wheel, power windows and door locks, and Cruise Control are, of course, standard. So is the quiet and uncommon good taste.





Ninety-Eight Regency

## Perhaps it's time to move uptown.

If you prefer the spaciousness and riding comfort of full-size cars, and you're ready to move up to the good life, Olds Ninety-Eight Regency is the perfect address. Hard work and success shouldn't go

unrewarded. Regency sees that they don't. It literally waits on you hand and foot.

The driver seat power adjusts six ways on command. The passenger side reclines. Available tilt steering wheel

adjusts to the position you most prefer.

A center armrest opens to an impressive display of your favorite tapes or CDs. A full-frequency (20-20,000 Hz) compact disc player is available. Enjoy the sound

through extended range speakers.

The driver needs only to lift a finger to create a perfect driving climate. Convenient controls in the door activate side windows. Or adjust the air conditioner with

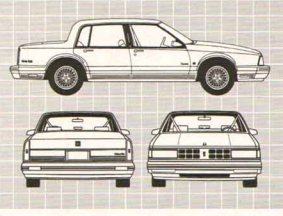
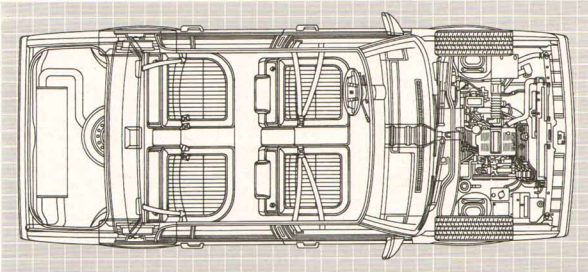
available touch controls on the steering wheel. With so many conveniences, it's like having your own chauffeur.

However, with the 165-horsepower, 3800 V6 with SFI and 4-wheel independ-

ent suspension with load leveling—you're sure to insist on doing all the driving.

All this at a price that's thousands of dollars less than many foreign and domestic luxury cars. Nice neighborhood.

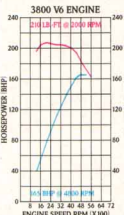




Ninety-Eight Regency Dimensions

BODY/CHASSIS	SEDAN
Wheelbase (in.)	110.8
Track, front/rear (in.)	60.3/59.8
Tire size	P205/75R14 or P205/70R15*
Wheel size	14 x 6 or 15 x 6†
Brake type, front/rear	Disc/Drum
Fuel tank (gals.)	18.0
EXTERIOR	
Length (in.)	196.3
Width (in.)	72.6
Height, curb (in.)	54.8
Curb weight (lbs.)	3325
INTERIOR	
Headroom, front/rear (in.)	39.3**/38.1**
Legroom, front/rear (in.)	42.4/41.5
Shoulder room, front/rear (in.)	58.9/58.8
Seating capacity	6
Trunk capacity (cu. ft.)	16.4

\*Regency Brougham.  
\*\*Headroom is reduced when Astroroof is ordered on Brougham.



Ninety-Eight Regency Powertrain Specifications

ENGINE	STANDARD
Displacement	3800 cc
Engine	V6
Brake hp (rpm)	165 @ 4800
Net torque (lbs.-ft.)	210 @ 2000
Bore/Stroke (in.)	3.80/3.40
Compression ratio	8.5 to 1
Fuel management	Electronic Fuel Injection (Sequential port)
Fuel requirement	Unleaded regular
Cooling system (qt.)	11.7
DRIVE LINE	
Transaxle	4-speed overdrive automatic
SUSPENSION/HANDLING	
Front/Rear	4-wheel independent with automatic leveling system
Front turning diameter, curb to curb (ft.)	39.4

The closer you look, the more logical the Ninety-Eight Regency becomes. It offers bountiful luxury and an impressive array of convenience features. But underneath it all, Ninety-Eight Regency has its practical side. Thermoplastic front fender liners, zincmetals, and two-sided galvanized steel body panels—all to help

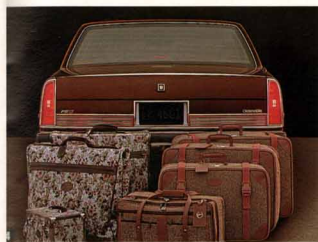
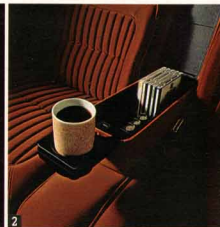
protect your investment for years to come.

- 1. Ninety-Eight Regency standard interior in Elite II fabric, shown with available supplemental inflatable restraint.
- 2. The center armrest

provides storage for CDs and tapes. □ 3. With available remote control lock package, you can lock or unlock all doors and trunk from as far as thirty feet away. □ 4. Regency's large trunk is completely carpeted to protect your luggage.

- 5. The available leather-wrapped steering wheel adjusts to six different positions and includes touch controls for interior climate (left) and stereo operation (right).

# Even a luxury car should have its practical side.





**Eighty-Eight Royale** It seems like a lot of family cars you see these days are more than just out of date. They're out of touch.

Maybe that's one of the reasons why Eighty-Eight Royale has helped make Oldsmobile the domestic leader in resale value over a ten-year period.\*

The 1990 Oldsmobile Eighty-Eight Royale is family transportation for the new generation.

First of all, it doesn't subscribe to the cookie-cutter school of design. For 1990, in fact, it is freshly restyled and smartly refined, with distinctive new grille and fascia up front and new tail lamps and trunk treatment at the rear. One handsome automobile.

One look and you know that the new Eighty-Eight Royale is as contemporary as tomorrow. And it features the kind of solid technology that will have you smiling for miles down the road.

Up front, front-wheel drive for excellent traction—on dry, wet or snow-covered road surfaces. You'll like the added stability, too. It greatly diminishes the buffeting effects of annoying cross winds. Front-wheel drive even

adds to interior room and comfort, because there is no driveshaft tunnel running through the passenger compartment. You can really stretch out and enjoy the ride.

Some of the competition, however, still don't offer front-wheel drive and its

many accompanying advantages.

The Eighty-Eight Royale ride is smooth and beautifully controlled. With a separate suspension system at each of the wheels, bumps and tar strips go virtually unnoticed. When a wheel encounters a bump, that wheel deals with it. And discards it. The other three wheels, and all passengers, remain unaffected. Steady as she goes.

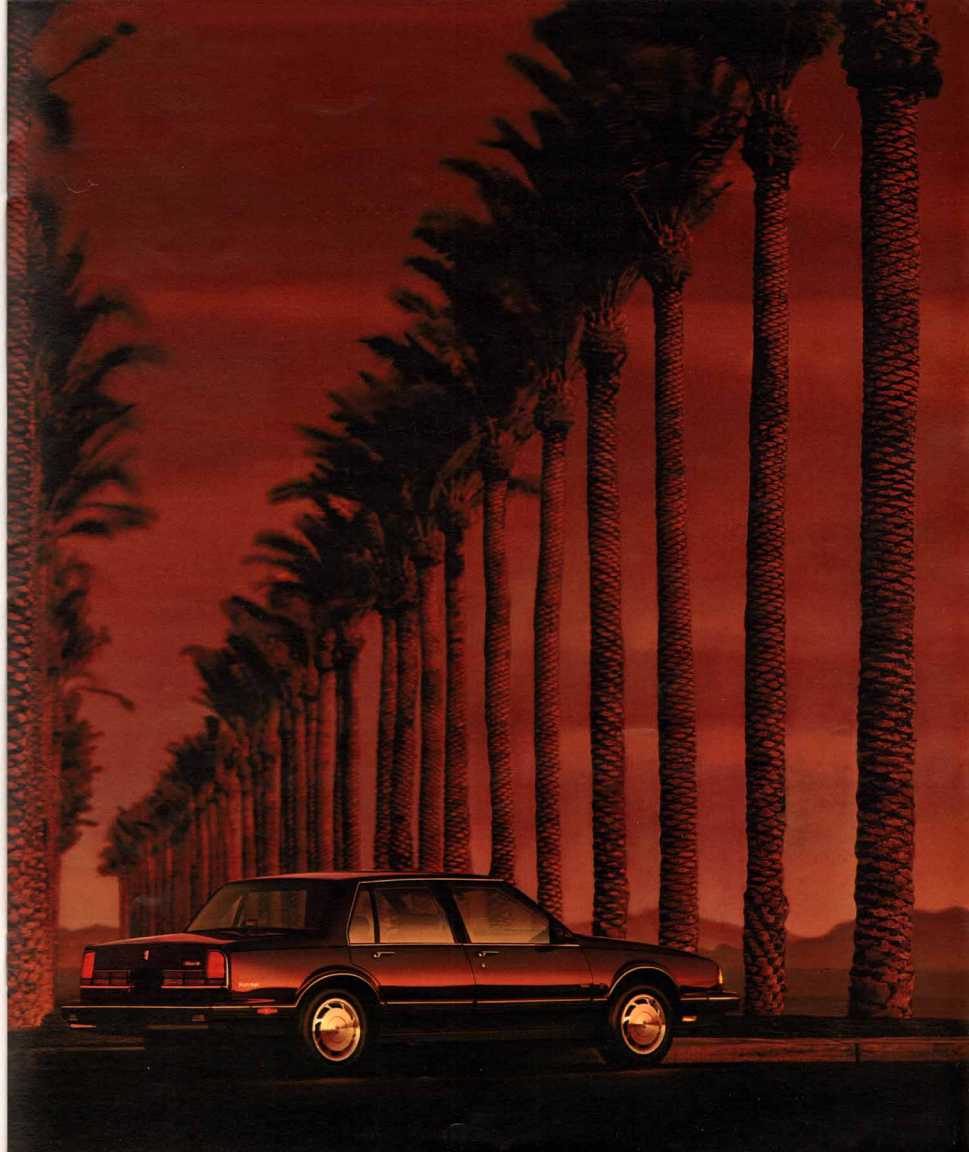
And because today's families are so active, we think a family's car should offer that same attribute. That's why the Eighty-Eight Royale coupe and sedan come with the advanced 3800 V6 engine with sequential port fuel injection.

After all, it takes a lot of engine to capably power a true 6-passenger automobile. The 3800 V6 engine is so capable, in fact, that an optional power plant isn't even made available. To transmit all that performance to the wheels, the standard, smooth-shifting 4-speed automatic overdrive transmission.

If you're looking for the finest and the latest in roomy, comfortable and affordable family transportation, you are definitely on the right road—with the new Oldsmobile Eighty-Eight Royale.



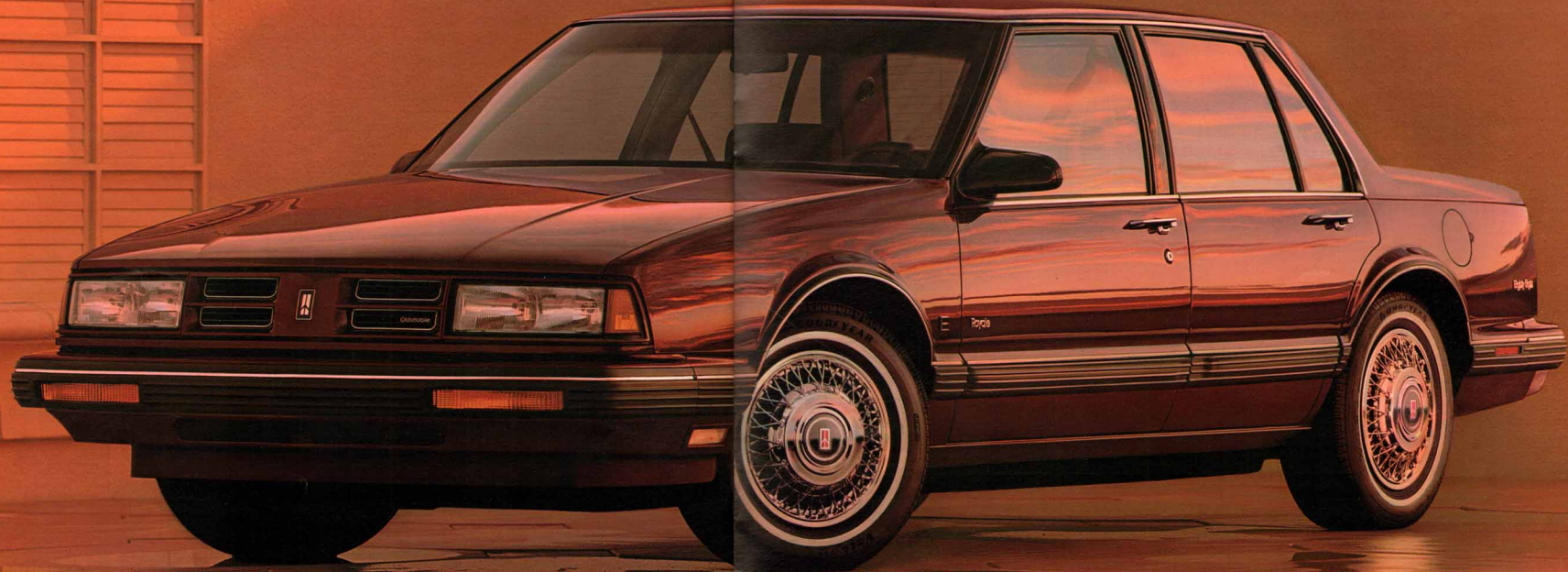
It'll take you  
and your family down  
a new road.



\*Based on average percentage retained value of 3 to 5-year-old cars resold from 1979 to 1988.



A travel agent couldn't get you a better package.







Eighty-Eight Royale Brougham

## Everybody should have a place to go for a little peace and quiet.

After a day full of appointments or rounding up the kids from scout meetings or dance school, you deserve some peace and quiet. So head for home with all the comforts of home, in the new Eighty-Eight

Royale Brougham. Here's one contemporary interior that is really designed for the family. It is spacious and welcoming.

And incredibly quiet. Special acoustical materials are used generously through-

out the body, soaking up interior and exterior sounds, much like a blotter. The exhaust system is completely isolated. Even the small openings for wiring and plumbing are tightly sealed to keep noise out.

Acoustical headlining above and deep, thick cut-pile carpeting underfoot, offer further assurance of a quiet, relaxing ride.

So make yourself at home. Slip into that inviting full-foam seat comfort. There

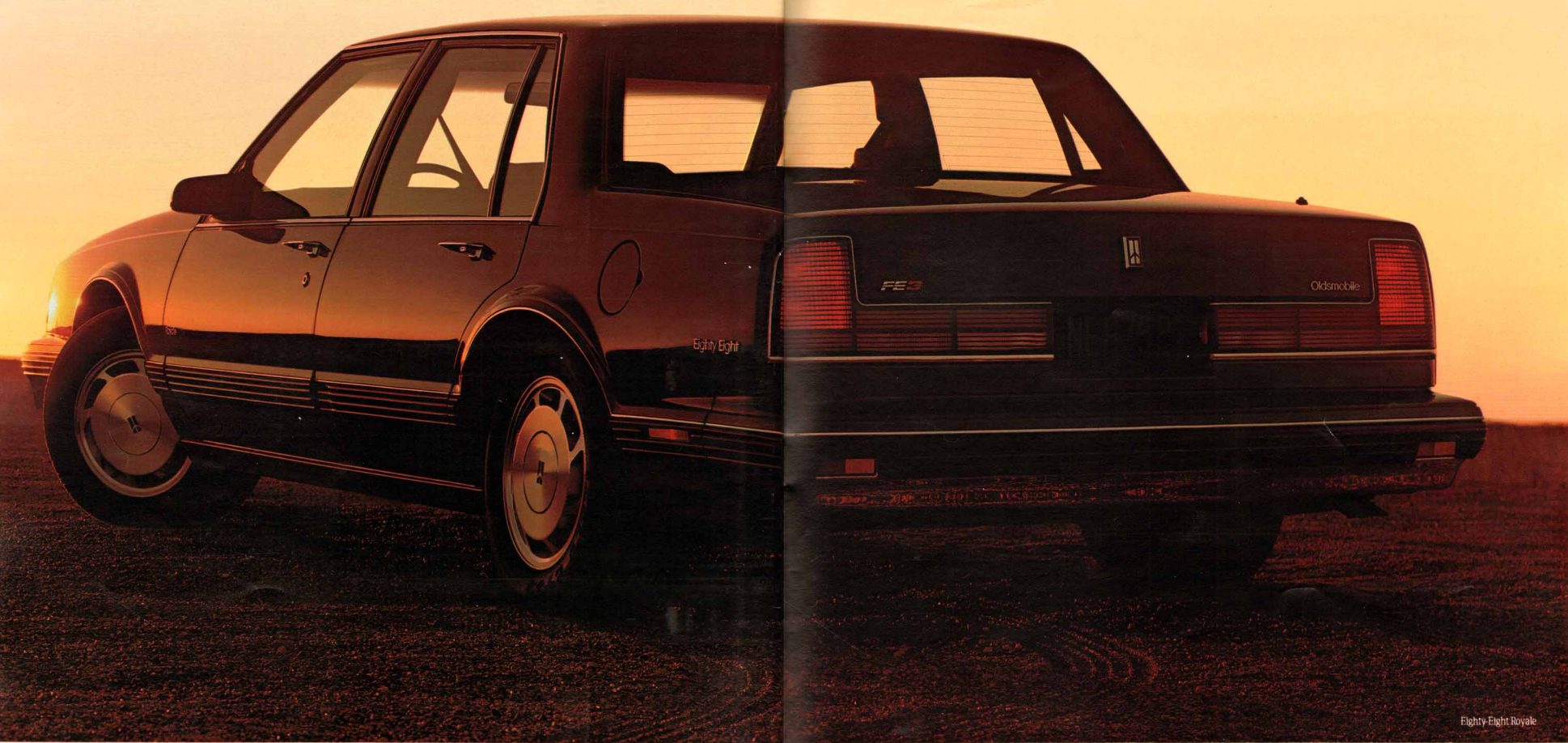
are no springs to shift or squeak. Support is excellent and long-lasting. So enjoy it.

The rich, soft fabric is Tuscany II knit velour. Elegant, to be sure. But remember, this is a family car. So it is weaved, and ex-

haustively tested, to more than withstand the slings and arrows of today's energetic youngsters. And it cleans up easily, too.

Eighty-Eight Royale Brougham for 1990. It's one great way to call it a day.





Eighty Eight Royale

## Send your driver instincts a wake-up call.

Without exception, a family-car's ride should be big and relaxing. And Eighty-Eight Royale's certainly is. After all, it's an Oldsmobile. But it can be lively and refreshing, too. And with 4-wheel independ-

ent suspension, it is also definitely that.

But for family providers who've never quite gotten the love of driving out of their systems, the highly sophisticated FE3 package is available. It's like adding sauce

to the porterhouse. Because FE3 adds the zest of touring car ride and handling. It can make the drive to the office more tolerable. And the drive on weekends, pure pleasure. And with the 15-inch aluminum-styled

wheels, Eagle GT P215/65R15 steel-belted performance tires and quick-ratio power rack-and-pinion steering, you move through corners like they have your name on them.

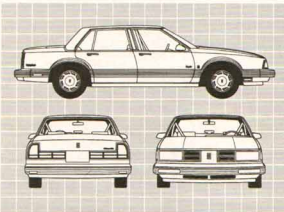
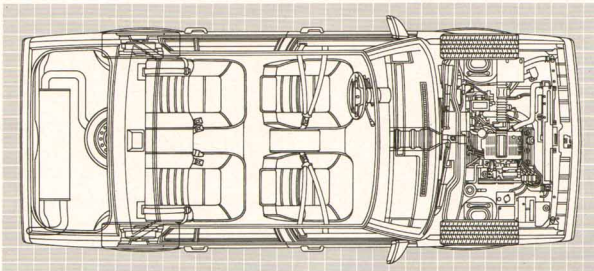
Add the available electronically con-

trolled anti-lock braking, and you stop with the same confidence with which you move. All this from an automobile that has become a big family favorite. And why not? With air conditioning, quality AM/FM stereo

system, power steering, power brakes, side window defoggers, and deluxe steering wheel all standard, it's one great value.

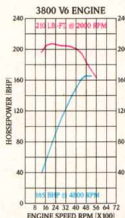
Plan on taking a test drive soon. Your driver instincts will rise and shine.





#### Eighty-Eight Royale Dimensions

BODY/CHASSIS	COUPE	SEDAN
Wheelbase (in.)	110.8	110.8
Tack, front/rear (in.)	60.3/59.8	60.3/59.8
Tire size	P205/75R14	P205/75R14
Wheel size	14 x 6	14 x 6
Brake type, front/rear	Disc/Drum	Disc/Drum
Fuel tank (gals.)	18.0	18.0
EXTERIOR		
Length (in.)	196.1	196.1
Width (in.)	72.6	72.6
Height, curb (in.)	54.0	54.0
Curb weight (lbs.)	3248*	3293**
INTERIOR		
Headroom, front/rear (in.)	38.1/37.6	38.9/38.3
Legroom, front/rear (in.)	42.4/37.4	42.4/39.1
Shoulder room, front/rear (in.)	59.2/57.8	59.3/59.5
Seating capacity	6	6
Trunk capacity (cu. ft.)	16.2	16.4
*3276, Brougham Coupe. **3303, Brougham Sedan.		



#### Eighty-Eight Royale Powertrain Specifications

	STANDARD
ENGINE	
Displacement	3800 cc
Engine	V6
Net torque (lb.-ft.)	165 @ 4800
Net torque (lb.-ft.)	210 @ 2000
Bore/Stroke (in.)	3.80/3.40
Compression ratio	8.5 to 1
Fuel management	Electronic Fuel Injection (Sequential port)
Fuel requirement	Unleaded regular
Cooling system (qt.)	11.7
DRIVE LINE	
Transmission	4-speed overdrive automatic
SUSPENSION/HANDLING	
Front/Rear	4-wheel independent
Front turning diameter, curb to curb (ft.)	39.4

With a price that's in the range of some mid-size cars, the full-size Eighty-Eight Royale is a great value right from the start. And that value is engineered and built to keep on delivering.

The self-cooling power front disc brakes with rear drums are designed for long life. So is the aluminized exhaust system. Body metal is two-sided galvanized steel. Zincmetals, waxes and special primers add to anti-corrosion protection. So relax, settle back and enjoy your

Eighty-Eight Royale for a long, long time.

- 1. Eighty-Eight Royale coupe in Black. □ 2. The instrument panel is trimmed in Dark Sheffield Gray. It features an easy-to-read analog speedometer. The deluxe steering wheel has a supple vinyl rim for a driving glove-type feel, even without gloves. A driver-side supplemental inflatable restraint system is available on sedan

# It's a decision you can live with for a long, long time.

models. □ 3. When it comes to vacations, this car is all business. Luggage, golf clubs, fishing gear—take it all with you. □ 4. No more fumbling in the rain for keys. Or grappling with an armful of groceries. With the available remote control lock package, you can lock or unlock all the doors or trunk from up to thirty feet away. How's that for convenience? □ 5. The standard Eighty-Eight Royale interior in Brigadoon weave with fold-down center armrest. □ 6. With the powerful 3800 V6 engine, wide stance and recommended towing equipment, this is an excellent trailer towing vehicle.





**Custom Cruiser** When there's work to be done, Custom Cruiser can roll up its sleeves and work with the best of them. After all, this broad-shouldered beauty is one of the longest, strongest wagons available anywhere today.

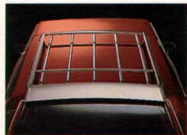
With fully carpeted load floor and 87.2 cubic feet of cargo space, Custom Cruiser has one very large following.



So much wagon, of course, requires a braggin' size engine. Custom Cruiser obliges with a muscular 5.0-liter V8 with carburetion of the 4-barrel variety. One of the largest production engines available today, it is capable of purring out 255 foot-pounds of torque at a leisurely 2000 rpm.



So you can count on Custom Cruiser to more than pull its own weight. As a matter of fact, when equipped with proper towing gear, it will pull a whopping 5,000 gross pounds\* of boat, trailer or whatever strikes your fancy.



front bench seat has dual controls. So driver and front passenger can each adjust the seat to their own liking. The upholstery is

But you can't work all the time. So lock your valuables in the hidden storage compartment. Close up that versatile tailgate. And slip into the lap of luxury. The deep foam 45/55 divided



glass all around add to your riding comfort.

Quality stereo with dual speakers, front and rear. Digital clock. Fourspeed automatic overdrive transmission. All standard on Custom Cruiser.

As for conveniences, they are provided at no extra charge. And they include

elegant Baron weave fabric, available in a choice of colors. Fold-down armrests, air conditioning and tinted



vanity mirror, power steering, power front disc brakes and 4-speed automatic overdrive

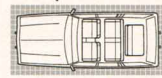
transmission. As for that 3-way tailgate, convenience is what it's all about. You can load that rear cavern with the tailgate down, or opened like a door, or closed, but with the window open. Great for slipping small parcels on board.



**Custom Cruiser Cargo Area Dimensions**

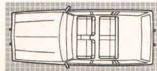
3 SEAT 8-PASSENGER MODEL:	
Maximum cargo volume (cu. ft.)	87.2
Floor length from back of front seat to end of floor surface (in.)	90.2
Floor length from back of second seat to end of floor surface (in.)	55.4
Minimum horizontal distance from top of rear front seat back to inside of tailgate at belt (in.)	83.8
Minimum distance between wheelhouses at floor level (in.)	48.2
Rear-end opening width at belt (in.)	48.2
Maximum height of rear opening, tailgate open (in.)	28.7
Maximum cargo height (in.)	29.1
Minimum rear opening width above belt (in.)	28.7

Convenient. Convenient. Convenient. Wood-grained vinyl is available for that "woody" look. And automatic load leveling

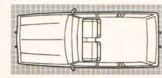


is available for owners who haul heavy loads frequently.

A great Oldsmobile ride is also standard, as you'd expect. It features a firm ride and handling package



with special, comfort-providing modifications. So all you and seven companions have to do is relax and enjoy.



Whether you want to move mountains or just drive to them, your new Custom Cruiser will never let you forget that it's an Oldsmobile.

\*Recommended maximum capacity including passengers, cargo and equipment.

Load your wagon.  
But drive off in your  
luxury sedan.







With the introduction of the advanced Visual Information Center (VIC), available on Toronado Trofeo and Toronado, Oldsmobile takes automotive electronic communication to an impressive new level.

The VIC is a user-friendly touch screen cathode ray tube system, mounted in the instrument panel. It allows you to store and recall up to 51 informative visual displays.

Shown here are just ten such displays.

The VIC is completely integrated with the available mobile car phone, an Oldsmobile exclusive. The phone provides memory speed dialing, automatic redialing, privacy/mute and more. With a hidden

microphone in the headliner and the use of the stereo speakers, it even includes *hands-off operation* and in-car conference calls. In addition, a Reminder Package, standard on Trofeo, Toronado and Touring Sedan and available on Ninety-Eight, Eighty-Eight and Custom Cruiser, includes indicators for low fluid/fuel levels, headlamp-on, engine temperature and more.

# A new generation of communication.



#### DELCO SOUND SPECIALIST RADIOS

	EIGHTY EIGHT ROYALE	NINETY EIGHT ROYALE BROUGHAM	CUSTOM CRUISER	OLDSMOBILE TOURING SEDAN	TORNADO	TORNADO TROFEO
UM7 Radio, Delco ETR AM/FM Stereo with Seek Scan*	S	S	A	S		
UM6 Radio, Delco ETR AM/FM Stereo with Seek Scan, Auto-Reverse Cassette*	S	S	A	S		
UN6 Radio, Delco ETR AM/FM Stereo with Seek Scan, Auto-Reverse Cassette with Music Search**					S	S
UT4 Radio, Delco ETR AM Stereo/FM Stereo with Seek Scan, Auto-Reverse Cassette with Graphic Equalizer*						
UC Radio, Delco AM/FM Stereo with Seek Scan, Compact Disc with Delco Lock Theft Deterrent**						
UTO Radio, Delco/Bose Music System, ETR AM Stereo/FM Stereo with Seek Scan, Auto-Reverse Cassette with Music Search†						
UX1 Radio, Delco ETR AM Stereo/FM Stereo with Seek Scan, Auto-Reverse Cassette with Music Search, Graphic Equalizer*						
UH1 Radio, includes Digital Compact Disc Player, Delco ETR AM Stereo/FM Stereo with Seek Scan, Auto-Reverse Cassette with Music Search, Graphic Equalizer						
UIA Radio, Digital Compact Disc Player, Delco ETR AM Stereo/FM Stereo with Seek Scan, Auto-Reverse Cassette with Music Search, Graphic Equalizer						

NOTE: All radios include a Digital Display Clock. S=Standard equipment. A=Available equipment. \*Includes Dual Extended Range Rear Speakers. \*\*Includes 6-Speaker Dimensional Sound System. †Receives C-Quam™ AM stereo broadcasts. ‡Most AM stereo stations across the country broadcast in C-Quam, but some do not. Check with your local stations for compatibility in your area. †Includes Delco/Bose Speaker System.

A Driver Information System, standard on Touring Sedan and available on Eighty-Eight Brougham and Ninety-Eight, includes readouts for miles per gallon, driving range, elapsed time, ETA and more. It even tells you when your oil is due for a change. Important because oil-change intervals vary with each car and driver, driving habits and climatic conditions.

The stereo radio, of course, is also a

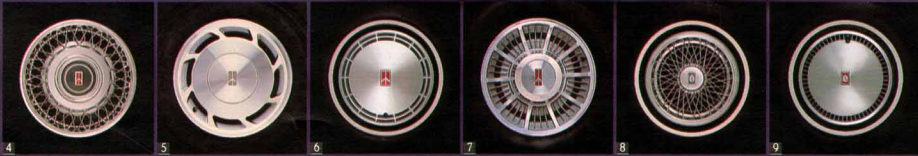
great communicator. And Oldsmobile offers an impressive selection of electronically tuned models. You can even choose a full-frequency compact disc player. With the New Generation of Oldsmobile, a vast world of information and enter-



tainment is right at your fingertips.

Ten of the 51 VIC displays, shown on the facing page, include... 1. Headlamp monitor 2. Adjust screen brightness 3. Navigational compass 4. Telephone menu 5. Phone directory 6. Display key touch screen pad for telephone dialing 7. Status page 8. Radio and speaker adjustments 9. Oil life remaining 10. Climate control.





For 1990, Oldsmobile offers a wide range of standard and available wheel and wheel trim choices. Some sporty. Some formal. All are handsomely styled to be a beautiful finishing touch. One is just right for your new generation Oldsmobile.

□ 1. Aluminum-Styled Wheel with Lock, 16". Standard on Trofeo and Touring Sedan. □ 2. Aluminum-Styled Wheel with Lock, 15". Standard on Toronado. □ 3. Aluminum-Styled Wheel

with Lock, 15" (PH3). Available on Ninety-Eight Regency and standard on Ninety-Eight Regency Brougham (includes P205/70R15 Blackwall All-weather tire). Also included with FE3 Touring Car Ride and Handling Suspension System. □ 4. Simulated Wire Wheel Disc with Lock (N91). Standard on Ninety-Eight Regency. Available on Nine-

ty-Eight Regency Brougham and all Eighty-Eight models (includes P205/75R15 White-Stripe tire). □ 5. Aluminum-Styled Wheel with Lock, 15" (PA3). Includes a special ride tire. Available on all Eighty-Eight models. □ 6. Deluxe Wheel Disc. Standard on all Eighty-Eight models. □ 7. Cast Aluminum Wheel, 15" (N24). Available on Custom Cruiser. □ 8. Simulated Wire Wheel Disc with Lock included in 1SD option package on Custom Cruiser. □ 9. Deluxe Wheel Disc. Standard on Custom Cruiser.

# The finishing touch.

## Standard and Available Equipment\*

	Eighty-Eight Regency Trofeo	Eighty-Eight Regency Brougham	Custom Cruiser	Optional Touring Sedan	Toronado	Trofeo
<b>POWERTRAIN</b>						
ENGINE, 3800 V6 with Sequential Port Fuel Injection (LNV3) . . . . .	S	S	S	S	S	S
ENGINE, 5.0-liter V8, 4-bbl. (LVZ) . . . . .		S				
HEATER, Engine Block (K05) . . . . .	A	A	A	A	A	A
TRANSMISSION, Automatic with Overdrive (MXO) . . . . .	S	S	S	S	S	S
<b>CHASSIS</b>						
BATTERY, Freedom . . . . .	S	S	S	S		
BATTERY, Freedom High-Capacity . . . . .				S	S	
BRAKES, Power Four-Wheel Disc . . . . .			S	S	S	S
BRAKES, Power Front Disc and Rear Drum . . . . .	S	S	S	S	S	
BRAKING SYSTEM, Anti-Lock (IL9) . . . . .					A1	S
BRAKING SYSTEM, Anti-Lock (IM4) . . . . .	A	A	A	A	A	S
COOLING EQUIPMENT, High-Capacity—includes Battery System, High-Capacity, Recommended for Trailer Towing (VOB) . . . . .	A	A	A	A	A	S
DELCOTRON . . . . .	S	S	S	S	S	S
DIFFERENTIAL, Limited-Slip (C80) . . . . .			A			
IGNITION SYSTEM, High-Energy . . . . .	S	S	S	S	S	S
LEVELING SYSTEM, Automatic Electric, Recommended for Trailer Towing (G67) . . . . .			A			
STEERING, Power . . . . .			S			
STEERING, Power, Rack-and-Pinion . . . . .	S	S	S	S	S	S
SUSPENSION SYSTEM, Four-Wheel Fully Independent with MacPherson Front Struts, Coil Springs at Rear . . . . .		S	S			
SUSPENSION SYSTEM, Four-Wheel Fully Independent with MacPherson Front Struts, plus Automatic Electronic Load Leveling—includes Special Touring Car Ride and Handling System . . . . .				S		
SUSPENSION SYSTEM, Four-Wheel Fully Independent with MacPherson Front Struts, plus Automatic Load Leveling and Coil Springs at Rear (Electronic Load Leveling on Brougham) . . . . .			S	S		
SUSPENSION SYSTEM, Independent Front with Coil Springs and Stabilizer Bar, plus Coil Springs at Rear . . . . .		S				
SUSPENSION SYSTEM, MacPherson Front Struts with Transflex Independent Rear, plus Automatic Leveling System . . . . .					S	
SUSPENSION SYSTEM, Touring Car Ride and Handling consists of Special Suspension Components and Special Steering Gear, plus Steering Wheel, Leather Wrapped, Leveling System, Automatic Electric Wheels, Aluminum-Styled 15" with Locks; and Tires, P215/65R15 Performance Steel-Belted Radial-Ply Blackwall—All-Season and 2.97 Ratio Transaxle (F79). Includes Cooling Equipment, High-Capacity (VOB) plus Battery, High-Capacity (FE3) . . . . .	A	A				
SUSPENSION SYSTEM, Touring Car Ride and Handling consists of Special Suspension Components and Special Steering Gear, plus Steering Wheel, Leather Wrapped, Tires, Aluminum-Styled 15" (PH3) and Tires, P215/65R15 Performance Steel-Belted Radial-Ply Blackwall—All-Season, 2.97 Ratio Transaxle (F79). Includes (VO8) Cooling Equipment, plus Battery High-Capacity (Wheels standard on Brougham) (FE3) . . . . .				A	A	
SUSPENSION SYSTEM, Touring Car Ride and Handling consists of Special Suspension Components, and Tires, P215/65R15 Performance Steel-Belted Radial-Ply Blackwall—All-Season and 2.97 (F79) Transaxle. (FE3) . . . . .						A1
SUSPENSION SYSTEM, Touring Car Ride and Handling with MacPherson Front Strut with Transflex Rear, plus Automatic Leveling System . . . . .						S
TIRES, P205/70R15 Steel-Belted Radial-Ply Blackwall—All-Season . . . . .						S
TIRES, P205/75R14 Steel-Belted Radial-Ply Blackwall—All-Season . . . . .					S	
TIRES, P205/75R14 Steel-Belted Radial-Ply White-Stripe—All-Season (QJR) . . . . .	A	S			S	
TIRES, P205/75R15 Steel-Belted Radial-Ply Blackwall—All-Season . . . . .						S
TIRES, P205/75R15 Steel-Belted Radial-Ply White-Stripe—All-Season (CG2) . . . . .						A
TIRES, P215/60R16 Performance Steel-Belted Radial-Ply Blackwall . . . . .						S
TIRES, P215/60R16 Performance Steel-Belted Radial-Ply Blackwall—All-Season . . . . .						S
TIRES, P225/75R15 Steel-Belted Radial-Ply White-Stripe—All-Season . . . . .						S
TOWING PACKAGE, includes Firm Ride Front and Rear Shock Absorbers, Higher Rate Front and Rear Springs, Larger Front Stabilizer Bar and Rear Stabilizer Bar, plus Leveling System, Automatic Electric and 2.97 Ratio Transaxle (F79). Includes Cooling Equipment, High-Capacity (VO8) plus Battery (VB8) . . . . .	A	A				
TRAILERING PACKAGE, includes Optional 3.23 Trailer Towing Axle (GUS), Heavy-Duty Cooling, High-Capacity Battery and 7-Wire Trailer Electrical Harness (U94) . . . . .				A		
VENTILATION, Po-Thru . . . . .	S	S	S	S	S	S
WHEELS, 14 x 6 . . . . .	S	S	S	S		
WHEELS, 15 x 6 . . . . .					S	S
WHEELS, 15 x 7 . . . . .				S		
WHEELS, 16 x 7 . . . . .						S
WHEELS, Aluminum Styled with Locks . . . . .						S
WHEELS, Aluminum Styled 15" with Locks—includes Tires, P205/65R15 Ride Steel-Belted Radial-Ply Blackwall—All-Season (PA3/PH3) . . . . .	A	A			A	
WHEELS, Cast Aluminum, with Styled Wheel Disc (N24) . . . . .			A			
WHEEL DISCS, Deluxe . . . . .	S	S	S			
WHEEL DISCS, Simulated Wire with Locks includes Tires, P205/75R14 Steel-Belted Radial-Ply White-Stripe—All-Season (QJR) [Tires are standard on Royale Brougham] (N91) . . . . .	A	A		S	A	
<b>EXTERIOR STYLING</b>						
ACCENT STRIPE, Body (D90) . . . . .	A	A		A		
ASTORROOF, Electric Sliding Glass Panel in Gray Tint (Headroom is reduced when Astorroof is ordered) (CF5) . . . . .					A1	A
BODY SIDE AND TAILGATE PANELING, Wood-Grained Vinyl—Includes Door-Edge Guard Moldings—Color Brown (BX3) . . . . .			A			
BUMPER GUARDS, Front and Rear . . . . .			S			
BUMPER RUB STRIPS, Front and Rear . . . . .	S	S	S	S	S	S

\*Standard equipment. A=Available equipment. \*Additional equipment available in convenient option packages. 1=Available only when other options are added/deleted. See your dealer for details.



## Standard and Available Equipment<sup>1</sup>

### EXTERIOR STYLING<sup>1</sup> (CONTINUED)

	Eight-Spoke Wheel Appearance Eight-Spoke Wheel Eight-Spoke Wheel		Twenty-Spoke Wheel Appearance Custom Caps Custom Caps		Optional Wheel Design Twenty-Spoke Wheel Twenty-Spoke Wheel		Twenty-Spoke Wheel Twenty-Spoke Wheel	
BUMPER RUB STRIP, Front, Includes Amber Park/ Turn Lamps								S S
BUMPERS, Metallic Slate Gray, Front and Rear				S	S			S S
FOGLAMPS, Clear						S		S S
FRONT FASCIA, with Extended Air Dam								S S
GRILLE, Black with Headlamp Covers								S S
HEADLAMPS, Composite Halogen	S	S		S	S			S S
HEADLAMPS, Halogen Power Retractable						S		S S
HEADLAMPS, Tungsten Halogen (High Beams)				S				S S
LAMPS, Backup with Neutral Density Lens and Body Color Bezels						S		S S
LAMPS, Front Fender Cornering						S	S	S S
LAMPS, Opera Exterior				S	S			S S
MIRRORS, Black, Outside, Electric Remote Control—Driver and Passenger Side, plus Driver Side Defog								S S
MIRRORS, Color-Coordinated Outside Remote Control—Driver and Passenger Side				S				S S
MIRRORS, Exterior Patch Style—Remote Control, Driver and Passenger Side				S	S			S S
MIRRORS, Metallic Slate Gray, Electrically Operated Outside—Driver and Passenger Side, Driver Side has Electric Defog						S		S S
MIRRORS, Outside—Driver Side, Remote Control—Passenger Side Manual (Chrome on Custom Cruisers)	S	S		S				S S
MOLDINGS, Belt Reveal and Roof Drip—Bright	S	S		S	S			S S
MOLDINGS, Black, Wheel-Opening, Beltline and Quarter Windows								S S
MOLDINGS, Body Side	S	S		S	S			S S
MOLDINGS, Door-Edge Guard				S	S			S S
MOLDINGS, Metallic Slate Gray Wheel-Opening, Belt and Window-Frame						S		S S
MOLDINGS, Rocker Panel and Wheel Opening	S	S		S				S S
MOLDINGS, Side Window				S				S S
MOLDINGS, Special Bright, Upper Full Body Side								S S
MOLDINGS, Special Lower Body Side Ribbed in Metallic Slate Gray with continuity to Front and Rear Fascias						S		S S
MOLDINGS, Wheel-Opening and Belt Reveal						S		S S
MOLDINGS, (Wide—Brougham) Lower Body Side and Wheel-Opening (and Extended Belt—Brougham)				S	S			S S
PAINT Glamour Metallic Colors—83 Medium Sapphire Blue and 95 Light Antelope (VIP)				A	A			A
PAINT SCHEME TWOTONE, consists of a compatible secondary color applied to Body Sides, and Front and Rear Bumper Fillers. Available only in the following Primary and Secondary Paint color combinations: 40-85, 13-85, 41-85, 28-85, 85-13 and 72-13								A
ROOFTOP COVERING, Full Vinyl (Sedan only) (C09)						A		A
ROOFTOP COVERING, Full Vinyl Padded (CBS)						A	A <sup>1</sup>	A <sup>1</sup>
SPECIFIC "B" PILLAR APPLIQUE, In Metallic Slate Gray						S		S

<sup>1</sup>Standard equipment A=Available equipment <sup>2</sup>Additional equipment available in convenient option packages. <sup>1</sup>=Available only when other options are added/deleted. See your dealer for details.

## Standard and Available Equipment<sup>1</sup>

### INTERIOR FEATURES<sup>1</sup> (CONTINUED)

	Eight-Spoke Wheel Appearance Eight-Spoke Wheel Eight-Spoke Wheel		Twenty-Spoke Wheel Appearance Custom Caps Custom Caps		Optional Wheel Design Twenty-Spoke Wheel Twenty-Spoke Wheel		Twenty-Spoke Wheel Twenty-Spoke Wheel	
RADIO, Delco/Bose Gold Series Music System, ETR AM Stereo/FM Stereo with Seek/Scan, Auto-Reverse Cassette with Music Search and Digital Display Clock—includes Delco/Bose Speaker System, (U10)							A	A <sup>1</sup>
RADIO, Delco ETR AM/FM Stereo with Seek/Scan and Digital Display Clock—includes Dual Rear Speakers							S	
RADIO, Delco ETR AM/FM Stereo with Seek/Scan and Digital Display Clock—includes Dual Rear Speakers with Extended Range and Fixed Mast Antenna						S		S S
RADIO, Delco ETR AM/FM Stereo with Seek/Scan, Auto-Reverse Cassette and Digital Display Clock (U10)							A	
RADIO, Delco ETR AM/FM Stereo with Seek/Scan, Auto-Reverse Cassette and Digital Display Clock, Dual Rear Speakers with Extended Range and Rear Quarter Fixed Mast Antenna				S	S			S S
RADIO, Delco ETR AM/FM Stereo with Seek/Scan, Auto-Reverse Cassette with Graphic Equalizer and Digital Display Clock—includes Dimensional Sound Six-Speaker System, plus Rear Quarter Mounted Power Fender Antenna						S		S S
RADIO, Delco ETR AM/FM Stereo with Seek/Scan, Auto-Reverse Cassette with Music Search, and Digital Display Clock—includes Dimensional Sound 6-Speaker System and Rear Quarter Power Antenna						S	S	S S
RADIO, Delco ETR AM/FM Stereo with Seek/Scan, Compact Disc and Digital Display Clock and "Delco-Loc" anti-theft feature—includes 6-Speaker Dimensional Sound System (U1C)				A <sup>1</sup>	A <sup>1</sup>	A <sup>1</sup>	A	A <sup>1</sup>
RADIO, Delco ETR AM Stereo/FM Stereo with Seek/Scan, Auto-Reverse Cassette with Graphic Equalizer and Digital Display Clock—includes 6-Speaker Dimensional Sound System (U14)				A <sup>1</sup>	A <sup>1</sup>	A <sup>1</sup>		A <sup>1</sup>
RADIO, Delco ETR AM Stereo/FM Stereo with Seek/Scan, Auto-Reverse Cassette with Music Search, Graphic Equalizer and Digital Display Clock (U1X)							A	A
RADIO, Digital Compact Disc Player, Delco ETR AM Stereo/FM Stereo with Seek/Scan, Auto-Reverse Cassette with Music Search, Graphic Equalizer and Digital Display Clock (U1A)						A <sup>1</sup>	A <sup>1</sup>	A <sup>1</sup>
RADIO, Digital Compact Disc Player, Delco ETR AM Stereo/FM Stereo with Seek/Scan, Auto-Reverse Cassette with Music Search, Graphic Equalizer and Digital Display Clock (U1H)						A <sup>1</sup>	A <sup>1</sup>	A <sup>1</sup>
REAR STORAGE COMPARTMENT LOCK						S		S
SPARE TIRE EXTRACTOR						S		S
STEERING WHEEL, Deluxe with Vinyl Rim				S	S	S		S S
STEERING WHEEL, Deluxe with Vinyl Rim with Tilt-Away features							S	
STEERING WHEEL, Leather-Wrapped Sport with Tilt-Away features and Touch Controls for HVAC and Radio								S

<sup>1</sup>Standard equipment A=Available equipment <sup>2</sup>Additional equipment available in convenient option packages on most models. <sup>1</sup>=Available only when other options are added/deleted. See your dealer for details. <sup>2</sup>=Receives C-Quam™ AM stereo broadcasts. Most AM stereo stations across the country broadcast in C-Quam™ but some do not. Check with your local stations for compatibility in your area.

	Eight-Spoke Wheel Appearance Eight-Spoke Wheel Eight-Spoke Wheel		Twenty-Spoke Wheel Appearance Custom Caps Custom Caps		Optional Wheel Design Twenty-Spoke Wheel Twenty-Spoke Wheel		Twenty-Spoke Wheel Twenty-Spoke Wheel	
STEERING WHEEL, Leather-Wrapped with Tilt-Away features								S S
TRIP ODOMETER				S	S			S S
TURN-SIGNAL-ON REMINDER CHIME				S	S			S S
<b>SEATING AND TRIMS</b>								
REINFORCEMENT SYSTEM, Front Seat Inflation, Driver Side—includes Steering Wheel, Leather-Wrapped [A13]				A <sup>1</sup>	A <sup>1</sup>	A <sup>1</sup>	A	S S
SAFETY BELTS, Automatic, Color-Keyed to Interior Trim						S	S	
SAFETY BELTS, Automatic Deluxe Front, Color-Keyed to Interior Trim							S	S S
SAFETY BELTS, Deluxe Front, Color-Coordinated with Individual Interiors								S S
SAFETY BELTS, Deluxe Lap and Shoulder, Front and Rear, Color-Keyed to Interior Trim							S	
SAFETY BELTS, Rear Shoulder, Color-Keyed to Interior Rear Trim				S	S		S	S S
SEAT, 45/55 Divided Front Bench with Dual Controls						S		S S
SEAT, 55/45 Divided Bench Front with Dual Controls, Driver Side—6-Way Power, Passenger Side—Manual with Seat Back Recliner							S	S
SEAT, 55/45 Divided Bench Front with Center Armrest (AM6)								A <sup>1</sup>
SEAT, 55/45 Divided Bench Front with Individual Controls						S		S S
SEAT, Contour Reclining Bucket—includes Console with Floor Shifter							S	
SEAT, Custom Bench Front with Center Armrest						S		S S
SEAT, Front Bench with 6-Way Power Adjusters with Console—Mounted Switches for Dual-Power Lumbar, Power Recliner and Power Thigh features								S S
SEAT, Front Bench with 6-Way Power Adjuster, Power Recliner, Power Adjustable Side Bolsters, Power Lumbar, Power Thigh Support and Power Articulating Headrests—Fore and Aft with Manual Vertical Adjustment								S S
SEAT, Rear Facing Third							S	
SEAT, Rear Fixed Headrest								S S
SEAT ADJUSTER, 6-Way Power, Bucket Seat—Driver Side								S S
SEAT ADJUSTER, 6-Way Power, Divided Bench Seat—Passenger Side (AG2)						A <sup>1</sup>		S S
SEAT CUSHIONS, Full Foam—Front and Rear				S	S			S S
TRIM, Custom Leather in Seating Areas—includes Steering Wheel, Leather-Wrapped (Wheel is Standard on Toronto) (W17)				A <sup>1</sup>	A <sup>1</sup>	A <sup>1</sup>	A <sup>1</sup>	S
<b>COMFORT/CONVENIENCE FEATURES</b>								
AIR CONDITIONER, Electronic Automatic—Manual Override								S
AIR CONDITIONER, Electronic Comfort Control (Manual Override on Toronto and Trofeo; Automatic on Touring Sedan)								S S S
AIR CONDITIONER, Four-Season				S	S	S		S S



# Standard and Available Equipment

## COMFORT/CONVENIENCE (CONTINUED)

	Eighty-Eight Royale	Eighty-Eight Royale Brougham	Ninety-Eight Regency	Ninety-Eight Regency Brougham	Quantum	Touring Sedan	Toronado	Toronado Brougham
CLUSTER, Instrument Panel—includes Voltmeter, Temperature, Oil Pressure gauges (and Trip Odometer—Eighty-Eight Royale only) (U14/U39)	A*	A*	A*	A*				
CLUSTER, Instrument Panel Electronic—includes Multicolor Vacuum Fluorescent Display features; Bar Graph Vehicle Speed; Fuel Level and Engine Temperature. Digital Display of Total Odometer, Trip Odometer, Inside/Outside Temperature and Transmission Shift Position, plus English/Metric Conversion Switch (US2)		A*		A*				
CONVENIENCE VALUE GROUP, includes Illumination Package for Front Door Locks and Interior, Color Coordinated, Electrically Operated Outside Driver and Passenger Side Mirrors, Passenger Side Illuminated Visor Vanity Mirror, Front Fender Cornering Lamps; and Interior Lamps—includes Front Header Courtesy and Dual Lens Reading Feature (R8A)	A*	A*						
CONVENIENCE VALUE GROUP, includes Reminder Package (Indicators for Low Fuel, Low Washer Fluid and Headlamp On). Also includes Audible Alarms for Low Fuel, Engine Temperature, Brake Pressure and Low Oil Pressure, Illumination Package, Front Door Locks and Interior, Twilight Sentinel, Electric Remote Control Fuel Filler Door Lock; Automatic Electrochromic Inside Day/Night Mirror and Color Coordinated Electrically Operated Outside Mirrors—Driver and Passenger Side (R8B)		A*	A*					
CRUISE CONTROL, Electronic with Resume and Acceleration Features			S	S	S	S	S	S
DEFOGGER, Electric Rear Window (C49)	A	A	A	A	A	S	S	S
DOOR LOCKS, Power (with Automatic feature on Drivers Side—Touring Sedan)			S	S	S	S	S	S
DOOR PULL HANDLES, Front (and Rear on Sedans)	S	S	S	S	S	S	S	S
FLOOR MATS, Auxiliary Front and Rear Carpet			S	S	S	S	S	S
HEADLAMP-ON REMINDER	S	S	S	S	S	S	S	S

S=Standard equipment. A=Available equipment. \*Additional equipment available in convenient option packages on most models. †=Available only when other options are added/deleted. See your dealer for details.

	Eighty-Eight Royale	Eighty-Eight Royale Brougham	Ninety-Eight Regency	Ninety-Eight Regency Brougham	Quantum	Touring Sedan	Toronado	Toronado Brougham
ILLUMINATION PACKAGE, Front Door Locks and Interior							S	S
INFORMATION SYSTEM, Driver—provides digital readout (English/Metric) for Fuel Economy, Instantaneous and average, Range and Fuel Used; Time and Elapsed Time, plus Average Miles-Per-Hour; Date, Estimated Time of Arrival and Total Distance to Destination. Also provides automated service reminder showing Estimated Oil Life remaining before next oil change is required. Digital gage information for Tachometer, Voltmeter and Coolant Temperature (US1)			A	A	A	A	S	
INSTRUMENT PANEL GAGE CLUSTER, with 120 mph Speedometer, Tachometer, Fuel, Oil Pressure, Water, Temperature and Voltmeter—includes Reminder Package Indicators for Low Fuel, Low Washer Fluid, plus audible alarms for Low Fuel, Engine Temperature, Brake Pressure and Low Oil Pressure							S	
LOCK, Electric Remote Control, Fuel Filler Door							S	S
LUGGAGE CARRIER, Deck Lid, Black and Chrome—includes High-Level Stop Lamp (V58)	A	A	A	A	A			
MIRROR, Illuminated Visor Vanity—Driver Side							S	
MIRROR, Illuminated Visor Vanity—Passenger Side							S	
OIL CHANGE AND LEVEL REMINDER							S	
REMOTE CONTROL LOCK PACKAGE							S	S
TELEPHONE, Mobile Keypad Control (UZ3)			A	A				
TRUNK GARGO NET			S	S	S	S	S	S
TRUNK-LID LOCK RELEASE, Power		S	S	S	S	S	S	S
TRUNK-LID PULL DOWN, Power (Automatic on Touring Sedan)							S	S
TWILIGHT SENTINEL			S	S	S	S	S	S
VEHICLE ANTI-THEFT SECURITY SYSTEM							S	S
VISUAL INFORMATION CENTER—includes Electronic Compass (U68)					A	A		
WINDOWS, Power Side (with Driver Side† Auto Down†—Toronado and Torneo) (A31)	A	A	S	S	S	S	S	S
WIPER SYSTEM, Pulse			S	S	S	S	S	S

## Affordable Option Packages to Personalize Your New Generation Oldsmobile.

EIGHTY-EIGHT ROYALE OPTION PACKAGES (All Orders must include only ONE Option Package)	ROYALE			ROYALE BROUGHAM		
	ISA*	ISB	ISC	ISA*	ISB	ISC
SEAT, 55/45 Divided Bench with Dual Controls and Reclining Passenger Side Seat Back (Includes Armrest, Front Seat Storage)	X	X	X			
WIPER SYSTEM, Pulse (Required with A13 and R8A)	X	X	X	X	X	X
CRUISE CONTROL, Electronic with Resume and Acceleration Features	X	X	X	X	X	X
STEERING WHEEL, Tilt-Away (Required with A13 or R8A—Royale, A13 or US2—Brougham)	X	X	X	X	X	X
CONVENIENCE GROUP, includes Under-Hood and Trunk Lamps, Visor Vanity Mirror and Chime Tones	X	X	X			
DEFOGGER, Electric Rear Window	X	X	X	X	X	X
FLOOR MATS, Auxiliary Front and Rear Carpet	X	X	X	X	X	X
DOOR LOCKS, Power—includes in Remote Control Lock Package	X	X	X	X	X	X
WINDOWS, Power Side (Required with UT4 or UIC—Brougham)	X	X	X	X	X	X
MOLDINGS, Door Edge Guard—Body Color	X	X	X	X	X	X
ANTENNA, Power Rear Quarter	X	X	X	X	X	X

\*Package ISA includes standard equipment only

EIGHTY-EIGHT ROYALE OPTION PACKAGES (CONTINUED) (All Orders must include only ONE Option Package)	ROYALE			ROYALE BROUGHAM		
	ISA*	ISB	ISC	ISA*	ISB	ISC
SEAT BACK, Reclining Manual—Driver Side		X	X		X	X
REMOTE CONTROL LOCK PACKAGE, includes Door and Trunk Lock Release, Power; and Unlocked Door Reminder Light—Driver Side—Royale; Door Locks, Power; and Unlocked Door Reminder Light—Driver Side—Brougham			X			X
SEAT ADJUSTER, 6-Way Power, Divided Bench Seat—Driver Side	X	X		X	X	
REMINDER PACKAGE, includes Indicators for Low Fuel, Low Coolant—Brougham, Low Oil Pressure, High Engine Temperature and Brake Warning (Required with U39—Royale, U39 or US2—Brougham)			X		X	X
AIR CONDITIONER, Automatic Electronic Comfort Control (Required with US2)			X		X	X
INFORMATION SYSTEM, Driver—provides Digital Readout (English/Metric) for Fuel Economy, Instantaneous and Average, Range and Fuel Used; Time and Elapsed Time, plus Average Miles-Per-Hour; Date, Estimated Time of Arrival; and Total Distance to Destination. Also provides automated service reminder showing Estimated Oil Life remaining before next Oil Change is required. Digital gage information for Tachometer, Voltmeter, and Coolant Temperature						X

\*Package ISA includes standard equipment only

CUSTOM CRUISER OPTION PACKAGES (All Orders must include only ONE Option Package)	CUSTOM CRUISER			
	ISA*	ISB	ISC	ISD
DRIVER CONVENIENCE PACKAGE, includes Wiper System, Pulse; Cruise Control, Electronic with Resume and Acceleration Features and Steering Wheel, Tilt-Away		X	X	X
MOLDINGS, Door Edge Guard—included in Body Side and Tailgate Wood-Grain Paneling Molding		X	X	X
FLOOR MATS, Auxiliary Front and Rear Carpet		X	X	X
MIRRORS, Chrome, Electrically Operated, Outside—Driver and Passenger Side		X	X	X
SEAT BACK, Reclining Manual—Passenger Side		X	X	X
ANTENNA, Power Front Fender		X	X	X
REMINDER PACKAGE, includes indicators for Low Fuel, Low Coolant, Low Oil Pressure, High Engine Temperature and Brake Warning (Required with U14)		X	X	X
DEFOGGER, Electric Rear Window		X	X	X
ACCENT STRIPE, Body with choice of color (N.A. if BX3 is ordered)		X	X	X
LUGGAGE CARRIER, Roof-top—Chrome—includes Rear Window Air Defogger		X	X	X
DOOR LOCKS, Power—includes Tailgate Lock Release		X	X	X
WINDOWS, Power Side		X	X	X
MOLDINGS, Lower Body Side		X	X	X
MIRRORS, Illuminated Visor Vanity—Driver and Passenger Side		X	X	X
SEAT ADJUSTER, 6-Way Power, Divided Bench Seat—Driver Side		X	X	X
RADIO, Delco ETR AM/FM Stereo with Seek Scan, Auto-Reverse Cassette and Digital Display Clock		X	X	X
AIR CONDITIONER, Bi-metric		X	X	X
LAMPS, Combination Dome and Dual Lens Reading		X	X	X
ILLUMINATION PACKAGE, Front Door Locks and Interior		X	X	X
LAMPS, Front Fender Cornering		X	X	X
MONITOR, Exterior Lamps, Front and Rear		X	X	X
MIRROR, Inside, Automatic Day/Night		X	X	X
SEAT ADJUSTER, 6-Way Power, Divided Bench Seat—Passenger Side		X	X	X
WHEEL DISCS, Simulated Wire with Locks		X	X	X

\*Package ISA includes standard equipment only

NINETY-EIGHT REGENCY/TOURING SEDAN OPTION PACKAGES (All Orders must include only ONE Option Package)	REGENCY			REGENCY BROUGHAM			TOURING SEDAN
	ISA*	ISB	ISC	ISA*	ISB	ISC	ISA*
FLOOR MATS, Auxiliary Front and Rear	X	X	X	X	X	X	X
WIPER SYSTEM, Pulse (Required with A13)	X	X	X	X	X	X	X
CRUISE CONTROL, Electronic with Resume and Acceleration Features	X	X	X	X	X	X	X
DEFOGGER, Electric Rear Window	X	X	X	X	X	X	X
STEERING WHEEL, Tilt-Away (Required with A13)	X	X	X	X	X	X	X
ANTENNA, Power Rear Quarter	X	X	X	X	X	X	X
MIRRORS, Illuminated Visor Vanity—Driver and Passenger Side	X	X	X	X	X	X	X
REMOTE CONTROL LOCK PACKAGE, includes Trunk-Lid Lock Release—Power—Regency; Trunk-Lid Pull-Down—Power—Brougham	X	X	X	X	X	X	X
SEAT BACK, Reclining Manual—Driver Side	X	X	X	X	X	X	X
AIR CONDITIONER, Automatic Electronic Comfort Control (Required with UK3)	X	X	X	X	X	X	X

\*Package ISA includes standard equipment only



NINETY-EIGHT REGENCY/TOURING SEDAN OPTION PACKAGES (CONTINUED) (All Orders must include only ONE Option Package)	REGENCY			REGENCY BROUGHAM			TOURING SEDAN ISA*
	ISA*	ISB	ISC	ISA*	ISB	ISC	
SEAT ADJUSTER, 6-Way Power, Divided Bench Seat—Passenger Side			X	X	X		
LAMPS, Front-Fender Cornering			X				
INFORMATION SYSTEM, Driver—provides Digital Readout (English/Metric) for Fuel Economy, Instantaneous and Average, Range and Fuel Used; Time and Elapsed Time, Plus Average Miles-Per-Hour; Date; Estimated Time of Arrival and Total Distance to Destination. Also provides automated service reminder showing Estimated Oil Life remaining before next Oil Change is required.			X			X	
STEERING WHEEL TOUCH CONTROLS, includes Steering Wheel, Leather-Wrapped; and Controls for Electronic Comfort Control Air Conditioner and Radio (UTA or UIC required—deleted for credit when AJ3 is ordered)			X			X	
CONVENIENCE VALUE GROUP, includes Reminder Package Indicators for Low Fuel, Low Washer Fluid and Headlamp On. Also includes Audible Alarms for Low Fuel, Engine Temperature, Brake Pressure and Low Oil Pressure, Illuminated Package, Front Door Locks and Interior; Twilight Sentinel; Electric Remote Control Fuel Filler; Automatic Electrochromic Inside Day/Night Mirror and Color-Coordinated Electrically Operated Outside Mirrors—Driver and Passenger Side (Required with U39 and U52)						X	

\*Package ISA includes standard equipment only

TORONADO/TROFEO OPTION PACKAGES (All Orders must include only ONE Option Package)	TORONADO ISA*	TROFEO ISA*
SEAT ADJUSTER, 6-Way Power—Passenger Side		X
ILLUMINATION PACKAGE, Front Door Locks and Interior		X
MIRRORS, Illuminated Visor Vanity—Driver and Passenger Side		X
TRUNK-LID PULL DOWN, Power		X
MIRROR, Inside Automatic Electrochromic Day/Night		X
REMOTE LOCK CONTROL PACKAGE, includes Control for Door Locks, Power; and Unlocked Door Reminder Light—Driver Side		X

\*Package ISA includes standard equipment only

## Standard Exterior Colors

(Actual color paint chips available. Ask your salesperson.)

13 Platinum Metallic ● □ ■ ▲ ▲	40 White ● □ ■ ▲ ▲	69 Medium Beechwood Metallic ●
15 Medium Gray Metallic □	41 Black ● □ ■ ▲ ▲	72 Medium Garnet Red Metallic ● □ ■ ▲ ▲
18 Pastel Slate Gray ■ □	52 Copper Beige ○	76 Dark Garnet Red Metallic ● □ ■ ▲ ▲
22 Light Sapphire Blue Metallic ●	57 Light Beechwood Metallic ○	79 Dark Maple Red Metallic ○
26 Light Sapphire Blue Metallic ○	59 Dark Beechwood Metallic ○	81 Bright Red ▲
28 Dark Sapphire Blue Metallic ● □ ■ ▲ ▲	62 Light Beechwood ●	85 Medium Slate Gray Metallic ● □ ■ ▲ ▲
29 Dark Sapphire Blue Metallic ○	64 Light Auburn Metallic ■ ▲	89 Autumn Maple Red Metallic ○
	66 Dark Auburn Metallic ■ ▲	

## Available Exterior Colors

VF GLAMOUR METALLIC PAINTS:	D84 TWOTONE PAINT SCHEME (PRIMARY COLOR/SECONDARY COLOR):
83 Medium Sapphire Blue Glamour Metallic ■ ▲	13 Platinum Metallic/85 Medium Slate Gray Metallic ▲
95 Light Antelope Glamour Metallic ■ ▲	28 Dark Sapphire Blue Metallic/85 Medium Slate Gray Metallic ▲
	40 White/85 Medium Slate Gray Metallic ▲
	41 Black/85 Medium Slate Gray Metallic ▲
	72 Medium Garnet Red Metallic/13 Platinum Metallic ▲
	85 Medium Slate Gray Metallic/13 Platinum Metallic ▲

Key: ● Eighty-Eight Royale/Royale Brougham, ○ Custom Cruiser, ■ Ninety-Eight Regency/Regency Brougham, □ Touring Sedan, ▲ Toronado, △ Toronado Trofeo

## 1990 Oldsmobile Model Lineup

Toronado Trofeo Coupe	Eighty-Eight Royale Sedan	Outlass Cruiser SL 3-Seat Wagon	Outlass Calais International Series Sedan
Toronado Coupe	Eighty-Eight Royale Coupe	Outlass Cruiser S 2-Seat Wagon	Outlass Calais International Series Coupe
Oldsmobile Touring Sedan	Outlass Supreme International Series Sedan	Outlass Cierra International Series Sedan	Outlass Calais SL Sedan
Ninety-Eight Regency Brougham Sedan	Outlass Supreme International Series Coupe	Outlass Cierra International Series Coupe	Outlass Calais SL Coupe
Ninety-Eight Regency Sedan	Outlass Supreme SL Sedan	Outlass Cierra SL Sedan	Outlass Calais S Sedan
Custom Cruiser 3-Seat Wagon	Outlass Supreme SL Coupe	Outlass Cierra S Sedan	Outlass Calais S Coupe
Eighty-Eight Royale Brougham Sedan	Outlass Supreme Convertible Coupe	Outlass Cierra S Coupe	Outlass Calais Sedan
Eighty-Eight Royale Brougham Coupe	Outlass Supreme Sedan	Outlass Cierra Sedan	Outlass Calais Coupe
	Outlass Supreme Coupe		Silhouette

Important—A Word About This Catalog: We have tried to make this catalog as comprehensive and factual as possible. We reserve the right, however, to make changes at any time, without notice, in prices, colors, materials, equipment, specifications, models and availability. Since some information may have been updated since the time of printing, please check with your Oldsmobile dealer for complete details.

A Word About Engines: Oldsmobiles are equipped with engines produced by different operating units of General Motors, its subsidiaries or suppliers to GM worldwide.

A Word About Assembly: Oldsmobiles are assembled by different operating units of General Motors, its subsidiaries or suppliers to GM worldwide. Oldsmobiles incorporate thousands of components produced by different operating units of GM, its subsidiaries or suppliers to GM worldwide. We sometimes find it necessary to produce Oldsmobiles with different or differently sourced components than originally scheduled. All such components have been approved for use in Oldsmobiles and will provide the quality performance associated with the Oldsmobile name. Since some options may be unavailable when your vehicle is assembled, we suggest that you verify that your vehicle includes the equipment you ordered or, if there are changes, that they are acceptable to you.

A Word About Updated Service Information: Oldsmobile regularly sends its dealers useful service bulletins about Oldsmobile products. Oldsmobile monitors product

performance in the field. We then prepare bulletins for servicing our products better. Now you can get these bulletins, too. Ask your dealer. To get ordering information, call toll-free 1-800-551-4123.

A Word About Warranty: The GM 3-year/50,000 mile BUMPER TO BUMPER PLUS WARRANTY covers repairs for any new Oldsmobile, including labor and parts, to correct any defects in material or workmanship occurring during the warranty period. The complete vehicle (except tires, which are covered by their manufacturer) will be covered for 3 years or 50,000 miles, whichever comes first. After the first year or 12,000 miles, there is a \$100 deductible per repair visit. Body sheet metal rust-through from corrosion is covered for 6 years or 100,000 miles, whichever comes first. There is no deductible for rust-through repairs. See your Oldsmobile dealer for terms of this limited warranty.

A Word About Corrosion Protection: Oldsmobiles are designed and built to resist corrosion. All body sheet metal components are warranted against rust-through corrosion for 6-years/100,000 miles. Application of additional rust-inhibiting materials is not required under the corrosion coverage.

Occupant Protection: Automatic safety belt system for driver and right front passenger on Eighty-Eight Royale, Custom Cruiser, Ninety-Eight Regency and Oldsmobile Touring Sedan • Manual lap/shoulder safety belts, outboard rear seat positions • Manual lap safety belts, center front/rear seat posi-

tions, where applicable • Supplemental Inflation Restraint, driver only, with manual lap/shoulder safety belts for the driver and right front passenger on Trofeo and Toronado (available on Eighty-Eight Royale and Ninety-Eight Regency sedans) • Energy absorbing steering column • Energy absorbing instrument panel • Energy absorbing seat back tops, front • Interlocking door latches • Side-guard door beam • Passenger-guard inside door lock handles • Inertia-locking, folding front seat backs, two-door models • Safety armrests • Head restraints, driver and right front passenger (adjustable) • Break-away inside rearview mirrors • Security door locks and door retention components

Accident Avoidance: Side marker lights and reflectors • Parking lamps that illuminate with headlamps • Fourway hazard warning flasher • Backup lights • Center high-mounted stop lamp • Directional signal control with lane change feature • Windshield defroster, washer and multi-speed wipers • Inside rearview mirror • Dual outside view mirrors • Brake system with dual master cylinder and warning light • Starter safety switch • Dual action hood latch • Low-glare finish on inside windshield moldings, wiper arms and blades, metallic steering wheel surfaces • Illuminated heater and defroster controls • Tires with built-in tread wear indicators

Theft Deterrence: Audible reminder for ignition key removal • Theft deterrent steering column lock • Visible vehicle identification number • Marked body parts on Trofeo and Toronado

F13, Oldsmobile, Quad 4, Trofeo, the Oldsmobile emblem, the Touring Sedan emblem and the Trofeo "T" emblem are registered trademarks of General Motors Corp. Eighty-Eight, Ninety-Eight and Regency are trademarks of General Motors Corp. © 1989 GM Corp. All rights reserved. Printed in USA 8/89



The New Generation of  
**OLDSMOBILE**

Oldsmobile



The New Generation of  
**OLDSMOBILE**

# 1990 Oldsmobile

Trofeo · Toronado · Touring Sedan

Ninety-Eight · Eighty-Eight · Custom Cruiser

Oldsmobile

