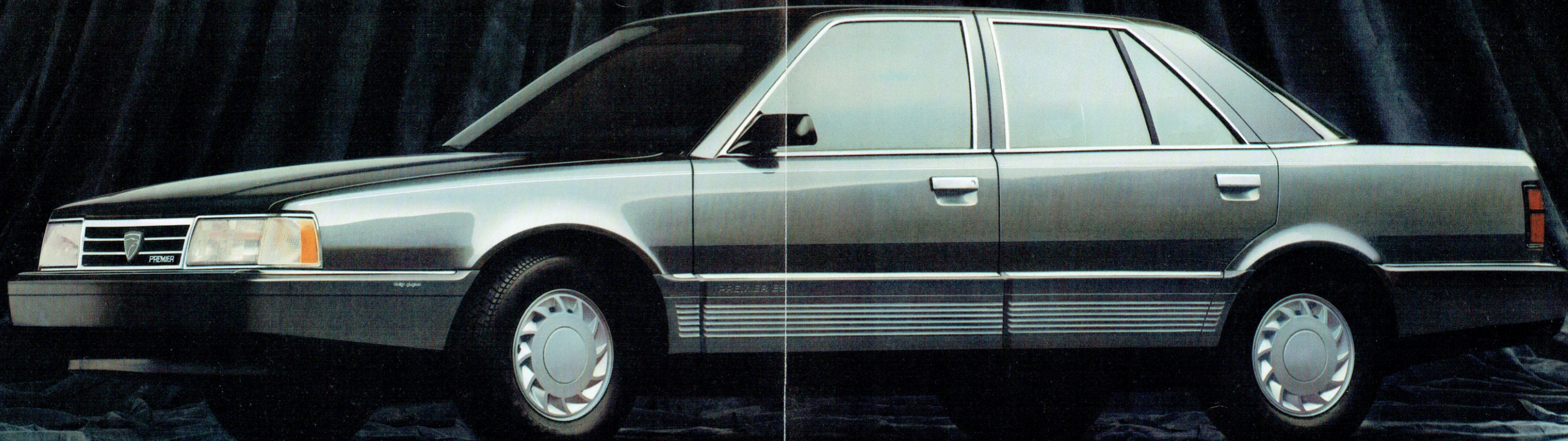




THE ROAD
ABOUT TO BE
TAKEN...



Eagle Premier LX



Eagle Premier ES

Introducing The 1988 Eagle Premier

Announcing the Birth of a New Automotive Brand from Chrysler.

Premier. Aply named because it's the first in a new line of sophisticated automobiles: *Eagle* from Chrysler. Emerging over the next few years will be an entire series of cars carrying the Eagle brand. Cars that are



Premier's spacious interior (shown in ES trim) offers best-in-class legroom for front and rear passengers.

technically advanced. With internationally inspired designs. Never basic transportation. Always cars to which you will aspire.

Created in the great tradition of European touring sedans, Premier proves how the *same* advanced thinking behind responsive performance and road worthiness can also bring you roominess for up to six passengers, smooth riding comfort, and long-lasting vehicle quality.

Premier's inherent driveability comes from its front-wheel drive design, fully independent suspension system, power rack-and-pinion steering, and power front disc brakes. Choices of power include a fuel-injected 2.5 litre 4-cylinder engine (standard LX), or an optional 3.0 litre OHC V6 with multi-port fuel injection (standard ES). Each is teamed with a responsive 4-speed automatic overdrive transmission.

Premier was also designed to be the *roomiest car in its class**, due in part to the space efficiencies of front drive and its innovative suspension design. Wide limousine-style doors allow easy entry and exit. Luxurious fabric-covered seats support passengers comfortably. And the trunk decklid opens near the bumper line for convenient loading into 16.4 cubic feet of cargo space*.

Even Premier's sleek aerodynamic styling, created by famed Giorgetto Giugiaro's Itai Design, makes an impression of aesthetic distinction, while contributing to vehicle quietness, efficiency, and maneuverability.

Premier's technological innovations include hundreds of design and assembly steps taken at our new state-of-the-art manufacturing facility to help ensure long-lasting quality. And this vehicle quality is backed by the Chrysler 7/70 Protection Plan**.

1988 Eagle Premier. Available in LX and ES models. It's the beginning of a whole new brand of automotive thinking. At your Jeep/Eagle dealer.

*Comparisons based on EPA and competitors' published figures for 1987 standard 4-door sedan models and *Ward's* Intermediate Standard Classification.

**7-year/70,000-mile limited powertrain and 7-year/100,000-mile outerbody rust-through warranties. See warranty at your dealer for details.

EAGLE PREMIER FEATURES & OPTIONS

KEY STANDARD FEATURES

- Front-wheel drive
- Four-wheel independent suspension
- Gas-filled rear shock absorbers
- 4-speed automatic overdrive transmission
- Power rack-and-pinion steering
- Power front disc/rear drum brakes
- 14" x 5.5" steel wheels and all-season steel-belted radial tires
- Leather-wrapped sport steering wheel
- AM/FM electronically tuned stereo radio
- Dual remote-control mirrors
- Tinted glass
- Aero-style quad rectangular halogen headlamps
- Intermittent windshield wipers
- Inside hood release
- Digital clock
- Electronic pod-mounted fingertip controls with "soft-touch" climate controls
- Limousine-style doors
- 17.0-gallon fuel tank
- Color-keyed interior with cut-pile carpeting and fabric seats
- Clearcoat exterior paint
- Chrysler 7/70 Protection Plan

STANDARD & OPTIONAL EQUIPMENT

	LX	ES
2.5L I-4 Engine	S	—
3.0L V-6 Engine	X	S
Individual Front Bucket Seats	X	S
3-Passenger 55/45 Front Split Bench Seat	S	—
Power Windows and Power Lock Group	X	X
Enthusiast Group	X	S
Power Dual Side Mirrors ¹	X	X
Power Antenna	X	X
Power 6-Way Front Seats	X	X
Power Sunroof ²	X	X
Premium Audio System	X	X
Premium Speaker System	X	S
Air Conditioning with Automatic Temperature Control	X	X
Cruise Control	X	X
Tilt Steering Wheel	X	X
Trip Computer and Vehicle Maintenance Monitor Package ^{3,4}	X	S
Digital Instrumentation ^{3,5}	X	X
Decklid Luggage Rack	X	X
Rear Window Defroster	X	X
P195/70HR14 BSW All-Season Radial Tires	S	—
P205/70HR14 BSW (Raised-Letter) Tires ⁴	X	S
14" x 6" Styled Aluminum Wheels	X	X

NOTE: This is only a partial list of equipment and restrictions. See your dealer for further details. S = Standard X = Optional — = Not Available ¹Requires Power Windows and Power Lock Group. ²Late introduction. ³Late introduction with I-4 engine. ⁴Requires Enthusiast Group. ⁵Requires air conditioning and includes Trip Computer and Vehicle Maintenance Monitor Package.

For more information on the new Eagle Premier, call toll-free: 800-JEEP-EAGLE.

BUCKLE UP FOR SAFETY.

ENGINES

Displacement/ Layout	2.5L I-4	3.0L V-6 OHC
Fuel Delivery	Throttle-Body Inj.	EFI-Multi-Port
Rated Horsepower	111 @ 4750	150 @ 5000
Rated Torque	142 @ 2500	171 @ 3750

DIMENSIONS

(inches unless otherwise specified)

EXTERIOR

Overall Length	192.8
Wheelbase	106.0
Overall Width	70.0
Track	
Front	58.2
Rear	57.1

INTERIOR

Front	
Headroom	38.5
Legroom	43.8
Shoulder Room	57.8
Rear	
Headroom	37.5
Legroom	39.4
Shoulder Room	56.9
Std. Seating Capacity	
ES	5
LX	6
Passenger Room (cu. ft.)	104.7
Cargo Room (cu. ft.)	16.4

Information correct at time of printing.