



1987 BUICK
EXTERIOR COLORS
AND WHEELS



K

O

I

U

B

BUICK EXTERIOR COLORS FOR 1987



Red
Code 70



Light Blue
Code 26*



Red
Code 72* +



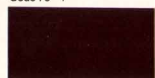
Bright Blue
Code 24*



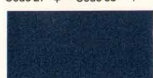
Dark Red
Code 76* +



Medium Blue
Code 27* + — Code 83** +



Dark Red
Code 79*



Dark Blue
Code 29*



Light Blue
Code 22* +



Dark Blue
Code 31*



Light Blue
Code 25*



Dark Blue
Code 28* +



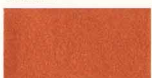
Creme Beige
Code 54



Copper Beige
Code 52* +



Tan
Code 63* +



Copper
Code 67* +



Light Brown
Code 33* +



Dark Copper
Code 64* +



Light Brown
Code 58*



Light Teal
Code 42* +



Brown
Code 62*



Teal
Code 92** +



Dark Brown
Code 96** +



Dark Teal
Code 48* +



Light Sage
Code 43*



White
Code 11 — Code 40 +



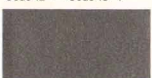
Light Rosewood
Code 80* +



Silver
Code 12* — Code 13* +



Medium Rosewood
Code 78* — Code 82* +



Dark Gray
Code 15* — Code 84* +



Rosewood
Code 71*



Black
Code 14* +



Dark Rosewood
Code 86*



Black
Code 19 — Code 41 +

*Metallic Paint
**Firemist Paint
+ Clearcoat Paint

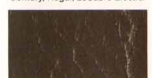
VINYL TOPS



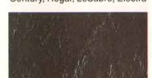
White • Code 11
Century, Regal, LeSabre, Electra



Dark Gray • Code 84
Century, Regal, LeSabre, Electra



Black • Code 19
Century, Regal, LeSabre, Electra



Dark Blue • Code 31
Century, Regal



Dark Blue • Code 28
LeSabre, Electra



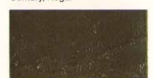
Tan • Code 58
Century, Regal



Tan • Code 63
LeSabre, Electra



Light Sage • Code 43
Century, Regal



Dark Teal • Code 48
LeSabre, Electra



Dark Red • Code 76
LeSabre, Electra



Dark Red • Code 79
Century, Regal

COLOR AVAILABILITY

Color	Code No.	Skyhawk, Skyhawk Wagon	Skylark	Somerset	Century, Century Wagon	Regal	LeSabre	Electra, Park Avenue	LeSabre/ Electra Wagons	Riviera	Riviera T Type
White	11	•			•	•			•		
Silver*	12	•			•	•			•		
Silver*	13		•	•			•	•		•	
Black*	14		•	•						•	•
Gray*	15	•			•	•			•		
Black	19	•			•	•			•		
Light Blue*	22		•	•			•	•		•	
Bright Blue*	24	•									
Light Blue*	25				•	•			•		
Light Blue*	26	•									
Medium Blue*	27		•	•							
Dark Blue*	28						•	•		•	•
Dark Blue*	29	•									
Dark Blue*	31				•	•			•		
Light Brown*	33						•	•		•	
White	40		•	•			•	•		•	•
Black	41						•	•			
Light Teal*	42										
Light Sage*	43				•	•			•		
Dark Teal*	48						•	•		•	
Copper Beige	52		•	•							
Creme Beige	54	•			•	•			•		
Light Brown*	58	•			•	•			•		
Brown*	62				•	•			•		
Tan	63						•	•		•	
Dark Copper*	64		•	•							
Copper*	67		•	•							
Red	70	•									
Rosewood*	71				•	•			•		
Red*	72		•	•			•	•		•	•
Dark Red*	76						•	•		•	
Medium Rosewood*	78	•									
Dark Red*	79				•	•			•		
Light Rosewood*	80		•	•						•	
Medium Rosewood*	82		•	•						•	
Medium Blue Firemist*	83						•	•		•	
Dark Gray*	84		•	•			•	•		•	•
Dark Rosewood*	86	•									
Teal Firemist*	92						•	•		•	
Dark Brown Firemist*	96						•	•		•	

BUICK WHEELS AND WHEELCOVERS FOR 1987

SKYHAWK, SKYHAWK WAGONS



Deluxe Wheelcovers
Standard on Custom
and Limited



Turbine Wheelcovers
Standard on Sport



Styled Hubcap with Trim
Ring
Sales Code — PA4



Custom Locking Wire
Wheelcovers
Sales Code — N91



13" Aluminum Wheels
Sales Code — N60



14" Aluminum Wheels
Included with Turbo
Included with Y56

SKYLARK



Deluxe Wheelcovers
Standard



Styled Hubcap with Trim
Ring
Sales Code — PA4



13" Aluminum Wheels
Sales Code — PX1



14" Aluminum Wheels
Included with Y56



Custom Locking Wire
Wheelcovers
Sales Code — N91

SOMERSET



Deluxe Wheelcovers
Standard



Styled Hubcap with Trim
Ring
Sales Code — PA4



13" Aluminum Wheels
Sales Code — PX1



14" Aluminum Wheels
Included with Y56



Custom Locking Wire
Wheelcovers
Sales Code — N91

CENTURY, CENTURY WAGONS



Deluxe Wheelcovers
Standard



Aluminum Wheels
Sales Code PG4



15" Aluminum Wheels
Included with Y56



Styled Steel Wheels
Sales Code — PC7



Custom Locking Wire
Wheelcovers
Sales Code — N91

REGAL



Deluxe Wheelcovers
Standard



Chrome-plated Wheels
Sales Code — P12



Color-keyed Wheels
Sales Codes — 12P, 31P,
46P, 62P, 79P



Aluminum Wheels
Sales Code — N78



15" Aluminum Wheels
Included with Y56



Custom Locking Wire
Wheelcover
Sales Code — N91



Chrome-plated Wheels
Standard on Grand
National

LeSABRE



Deluxe Wheelcovers
Standard on LeSabre,
Custom and Limited



14" Aluminum Wheels
Sales Code — N78



15" Aluminum Wheels
Included with Y56



15" Aluminum Wheels
Standard on T Type



14" Styled Steel Wheels
Sales Code — PC4



Custom Locking Wire
Wheelcovers
Sales Code — N91

ELECTRA/ PARK AVENUE



Electra Wheelcovers
Standard on Electra
Limited



Park Avenue Wheelcovers
Standard on Park Avenue



14" Aluminum Wheels
Sales Code — N78



15" Aluminum Wheels
Standard on T Type
Included with Y56



Custom Locking Wire
Wheelcover
Sales Code — N91

LeSABRE/ ELECTRA WAGONS



Aluminum Wheels
Standard on LeSabre
Wagon



Aluminum Wheels
Standard on Electra
Wagon



Chrome-plated Wheels
Sales Code — N83



Custom Locking Wire
Wheelcovers
Sales Code — N91

RIVIERA



Deluxe Wheelcovers
Standard on Riviera



15" Aluminum Wheels
Standard on T Type



14" Aluminum Wheels
Available on Riviera
Sales Code — PG4



Custom Locking Wire
Wheelcovers Available
on Riviera
Sales Code — N91



15" Aluminum Wheels
Included with
Y56 on Riviera

Buick Motor Division, General Motors Corporation, reserves the right to make changes at any time, without notice, in prices, colors, materials, equipment, specifications, and models; and also to discontinue models. Let's get it together . . . Buckle up



Wouldn't you
really rather have a Buick?

BSP 87-27 Rev.
Litho in U.S.A.