

1986 Oldsmobile

There is a special feel
in a Cutlass Ciera,
Cutlass Cruiser,
Cutlass Supreme
and Calais.



A Special Feel



Feelings, very special feelings, are yours to enjoy in every new 1986 Oldsmobile. Here, we invite you to discover the feeling of pride and satisfaction that's yours every time you take the wheel. The feeling of excitement every time you move along a turnpike. The feeling of solid dependability every time you turn the key. Oldsmobile specializes in creating feelings that delight the mind and please the spirit. Now you are invited to discover them for yourself in Cutlass Ciera Sedan...and in the brand-new Cutlass Ciera Coupe...its fun-to-drive exclusive Olds style will make it a leader in its class. Cutlass Supreme... its performance, grace and style have made it the most popular car of the eighties. Calais...the excitement that comes with driving this sporty, front-wheel-drive Olds is a new feeling for a young, new world. Cutlass Cruiser... a very stylish Olds that's also a very hard working wagon. Now for 1986, Cutlass Ciera and Calais will offer three ride systems. The smooth, standard boulevard ride of the Level I (standard) system. The firm ride and handling of the Level II (F41) system. The true sports touring suspension of Level III (FE3). Feelings. Oldsmobile offers you many ways to experience them. Now we invite you to find the Olds that feels right to you.



Cutlass Ciera Brougham Sedan

A marvel to look at.
A marvel to drive.



When specialists design a car that's so thoroughly correct... it can only be a winner. For example, Cutlass Ciera Brougham is not only a technological marvel, but it's also marvelous to look at and fun to drive. Created with state-of-the-art computers. Manufactured by smart minds using advanced robotics for precise fit and finish. The quality shows, especially in its ride. MacPherson strut suspension and rack-and-pinion steering, coupled with steel-belted radial-ply tires, iron out the road. And for performance, a 2.5-liter electronically fuel-injected engine is standard. For added performance, get the 2.8-liter V6. Style, technology and performance unsurpassed in its class.



Cutlass Ciera Brougham

Times have changed. Styles have changed.
But one thing always stays the same... Oldsmobile elegance.

Comfort mixes elegantly well with the world of advanced engineering in Cutlass Ciera Brougham. Brand new easy-care fabrics surround you from head to foot. Press down on the divided bench seating upholstered in new, thick, rich Paris velour. Or choose optional Sierra grain leather in seating areas. It's offered in three handsome shades. Now examine this interior world's many available options. Choose the electronic instrument panel, electronic auto trip calculator, and Delco-GM sound (there are four). Power features include: air, windows, driver's six-way seat and rear defogger, plus standard power steering and brakes.



Cutlass Ciera SL Coupe

Meet the new American. Its style lifts your standards to new heights.



Cutlass Ciera SL. Its style is an Olds exclusive and its heritage is all Cutlass. Two things that virtually guarantee it to be America's car for folks like you. How did all this come about? With great styling and computers. All kinds of them. Ones that aided in its exclusive Olds design and others that helped create and build it. And still others that, years later, will go on monitoring it. For example, the standard, electronic fuel-injected 2.5-liter engine has an on-board computer that constantly checks and rechecks 20 vital engine functions. Plus, many available options are connected to the on-board computer, like: air conditioning, electronic cruise control and auto trip calculator. Yes America, you're going to like your new native car so much so... you may never want another.



Cutlass Ciera Sedan & S Coupe



Give your standard of driving a totally new lift.

What makes the most affordable Cutlasses of all such a good value? A combination of many winning attributes. Some you see. Some you don't. For instance, the S Coupe has a totally new roofline. Exclusively Olds!

Under Ciera's sleek, stylish lines, there lies a specially treated tough-as-nails steel body that's soaked in rust-resistant primers, sealers and waxes. They say "No" to the damaging effects of harsh weather. Inside, you will notice: Ciera's room for six, Delco-GM sound and a standard 2.5-liter electronically fuel-injected engine. Plus 33 other impressive standard features that range from steel-belted radial-ply tires for road-hugging traction and performance to power rack-and-pinion steering, power brakes and custom bench seating for ease and comfort. So, if you value your standard of driving, Cutlass Ciera Sedan and S Coupe are the values to get.



Cutlass Ciera GT Sedan

**Turns curves into
straights, beautifully.**



That's quite a statement. But then, Cutlass Ciera GT Sedan is quite a car. Better yet... driving machine. You see, with its standard front-wheel drive and 3.8-liter sequential port fuel-injected V6 engine, it has the power to take you through bends in the road beautifully. And with its 4-speed automatic transmission with overdrive, Level III handling suspension, dual outlet exhaust system, Tungsten halogen headlamps, lower aero body extension for reduced air drag, 14" Eagle GT tires, aluminum wheels, Rallye instrument panel, leather-wrapped steering wheel, floor-mounted center console shifter and bucket seats, you'll like it even more. So if you like curves and a car that knows how to straighten them out... you'll love the new Cutlass Ciera GT Sedan.



Cutlass Ciera GT Coupe

**America, you're going
to have some fun tonight.**



Feast your eyes. Cutlass Ciera GT Coupe is an Olds exclusive whose ground hugging, road handling performance is standard. How did all this come about? Well, for starters, its high-energy ignition system fires up a 3.8-liter sequential port fuel-injected V6 engine. You can tell you've got something going for you when you hold onto its leather-wrapped steering wheel. Next, put its floor-mounted console shifter that's linked to a 4-speed automatic overdrive transmission into gear. Excitement... it's sure to quicken your pulse. There's more! You get form-fitting reclining bucket seats with a suede leather appearance in the seating areas. Level III handling suspension, 14" Eagle GT tires, and more. GT features inside and out. It's the new Ciera GT Coupe. Guaranteed to raise your standard of driving as it raises your pulse.



Cutlass Ciera

There's so much to like about the interior of your Cutlass Ciera.

You'll find a world of comfort expressed in easy-care fabrics in every new Cutlass Ciera Coupe and Sedan. For example, the standard seating is full-foam bench, covered in smart Vista velour in your choice of five colors. The optional 55/45 divided bench seat is also offered in the same five colors. So is the optional reclining bucket front seat on Ciera Coupe. Cutlass Ciera Brougham comes standard with a 55/45 divided bench seat, covered in new Paris velour in five colors. Or, choose the optional Sierra grain leather for the seating areas in three colors.



Cutlass Ciera split bench seating. Offered in smart Vista velour. Your choice of five attractive colors.



Cutlass Ciera bucket seats. Tailored in Vista velour. Four color choices.



Cutlass Ciera bench seating. Upholstered in Vista velour. Five colors.



Cutlass Ciera instrument panel with elegant contemporary look. Rallye cluster available.

Cutlass Ciera GT bucket seats. Tailored in Dark Claret Sierra grain leather in seating areas.

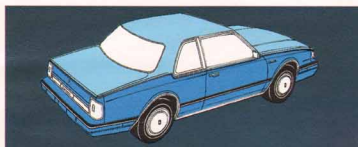


Available Tilt-Wheel steering features six positions for added comfort.



New high-level stop-light works in unison with rear tail lamps.

Available Sun Roof with removable tinted glass panels. Flip up or remove for ventilation. Or, just enjoy the view.



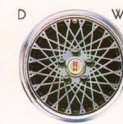
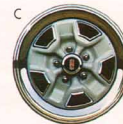
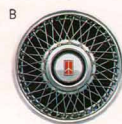
Complementing Duo-Color paint scheme. Five choices.



Large capacity trunk big enough to handle most everything you carry.



Available trunk-top luggage rack. Add style and room with extra carrying space.



Wheel trim. (A) Deluxe wheel discs, standard on all models. Available. (B) Wire wheel discs with locks. (C) Supers stock wheels in body color. (D) Aluminum-styled with spokes (standard on GT).



3.8-liter V6 sequential port fuel-injected engine is available. Offers spirited performance.



Electronic instrument cluster is available. Offers easy-to-understand digital speedometer, bar graph fuel level and engine temperature gauges, low-fuel warning indicator, trip odometer, English/metric conversion switch, and turn signal indicators.



Rallye instrument panel cluster. Includes tachometer, trip odometer, voltmeter and temperature and oil pressure gauges.



2.5-liter electronic fuel-injected engine for power and economy.

Cutlass Cruiser

First it's an Olds.
Then it's a wagon.



No matter what you do... Cutlass Cruiser can carry your day beautifully. You see, Cutlass Cruiser is proud of its many accomplishments. For instance: just fold down the second seat (both front and rear seating are full foam) and discover 74.4 cubic feet of cargo area. There's room enough to handle just about anything. And with its optional rear-facing third seat, it handles growing families beautifully. Add to all this spaciousness, front-wheel drive, a standard 2.5-liter electronically fuel-injected engine, and power steering and brakes and Cutlass Cruiser is ready to pull you through most anything comfortably! For extra comfort, choose available air conditioning, Cruise Control, one of four Delco-GM sound systems and Tilt-Wheel steering. Cutlass Cruiser—what a great idea.



This highly functional tailgate raises easily for the convenient loading of small packages.



Loading larger items is a breeze because the one-piece tailgate lifts up and away.



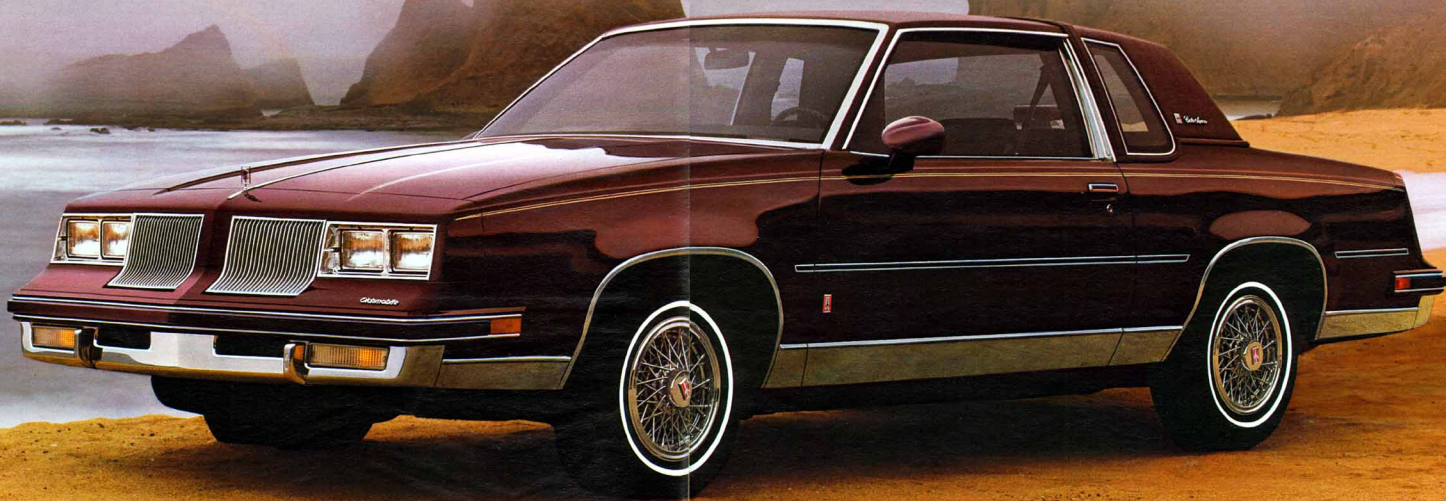
With the second seat down, there are over 74 cubic feet of cargo space. It also has hidden storage.

Cutlass Supreme Brougham Coupe

When you catch one this good,
you'll never want to let it go.



No wonder Cutlass Supreme is the most popular car of the eighties. Sculptured styling that's impressively strong and aerodynamically correct. Powerful performance, too. Just step on the pedal and take control with its available 5.0-liter 4-barrel V8 engine. Yes, Cutlass Supreme Brougham is also very luxurious. For instance, you'll notice it in its ride. Quiet and smooth. You'll notice how responsive it is in the way it handles the road. Power steering and power brakes, coupled with all-season radial-ply tires all contribute to its responsiveness. And if you prefer a tighter ride, order the available Level II suspension. There's also one more benefit to owning a Cutlass Supreme Brougham — its resale value.



Cutlass Supreme Brougham

As pleasing to the eye as
it is to the rest of you.

America's favorite kind of mid-size luxury for the eighties looks like this. Rich, sumptuous, tailored with a preciseness that has pleased so many Americans for so many years. Cutlass Supreme Brougham's available power features include: windows, door locks, driver's seat, Cruise Control, rear defogger, and air conditioning. Plus, power steering and brakes are standard. Now settle back and enjoy the plushness of Supreme Brougham's full-foam seating in Summit velour. Or choose available leather in seating areas. Another luxury that's worth enjoying is its traditional resale value.



Cutlass Supreme Brougham Sedan

First class
travel all the way.



Your travel outlook never looked as good as it does when you arrive in a Cutlass Supreme Brougham. Whether you're in town or out of the city, Cutlass Supreme Brougham is a pleasure to drive. Inside, its quiet and comfortable environment is enhanced by deep, rich velour fabrics that are exquisitely tailored over deep, cushioned seats — spacious seats that offer first-class seating for six. And its long list of available features includes: air conditioning, Delco-GM sound, Cruise Control, six-way power seat (driver side only), Tilt-Wheel steering and the powerful 5.0-liter 4-barrel V8 engine. Plus, power steering, brakes and automatic transmission are standard. It's always great to go first-class.



Cutlass Supreme Coupe & Sedan

Style and value
are always on the mark.



Style and value have been the hallmark of Cutlass Supremes for years. Their style has made them the most popular Olds ever. And their value shows up when you buy and when it's time to trade. You see, power steering, power brakes and the performance of a 3.8-liter 2-barrel V6 engine with automatic transmission are standard. Inside, comfort comes standard, too! You get custom bench seating for six, plush, wall-to-wall cut-pile carpeting and a Delco ETR AM/FM stereo with seek/scan (may be deleted for credit) and dual rear speakers for added depth of sound and clarity. Sound good? Cutlass Supreme is good! Because no matter which you choose, Coupe or Sedan, you get all that Cutlass style and value. No wonder Olds Cutlass Supreme has been, and is, a #1 choice of both past and present new car buyers.



Cutlass Salon & Cutlass 442

Performance that
tracks with the best.



Champions know each other by the pace they set. A pace that has a style and performance all its own. Oldsmobile offers two that will go head to head with the best. Cutlass Salon and Cutlass 442. First, Cutlass Salon, with its quick-ratio power steering and special suspension, takes control of the road, ironing out wrinkles with the preciseness that only its standard 3.8-liter V6 engine can do. Next, history repeats itself with the return of "442." A legend is reborn in the form of this stylish front runner with a high-output 5.0-liter V8 4-barrel engine with dual exhaust, 4-speed automatic transmission with overdrive, 3.73 ratio axle, Special Handling Package with air shocks in back and a whole lot more. Both come equipped with lots of standard features. So start 'em up and watch them "roar!"



Cutlass Supreme

Comfort and convenience are yours to enjoy with Cutlass Supreme interiors.

The feeling of beauty is yours to touch with Cutlass Supreme's Coupe and Sedan standard foam-filled custom bench seat, offered in smart Vista velour in your choice of five colors. As an option, choose the 55/45 divided bench seat in the same five colors. Or the optional contour bucket seat in the Coupe, in your choice of four colors. Cutlass Supreme Brougham comes standard with a 55/45 divided bench seat in elegant Summit cloth in five colors. In addition, optional genuine leather is available in seating areas at extra cost.

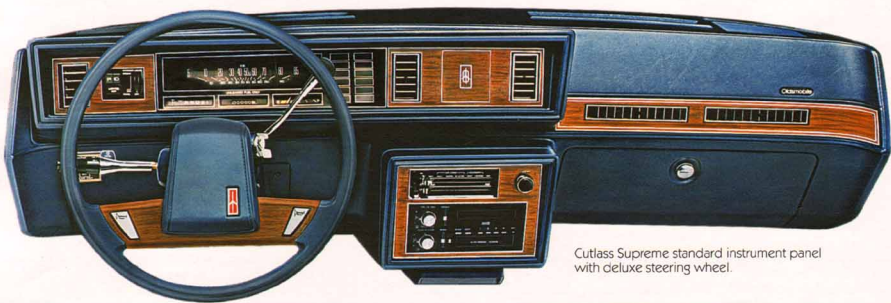


Cutlass Supreme bench seating. Upholstered in elegant Vista velour. Choose from five handsome colors.



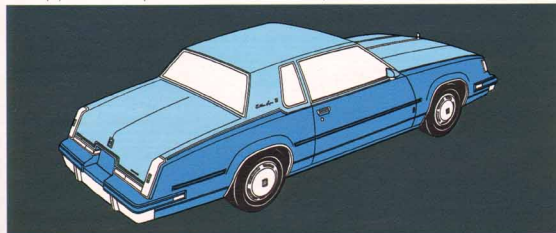
Floor-mounted sporty console with automatic shifter is standard on Cutlass Salon.

Cutlass Salon bucket seats. Tailored in luxurious Vista velour. Four colors.



Cutlass Supreme standard instrument panel with deluxe steering wheel.

Dress up your Cutlass Supreme with available two-tone paint treatment.



Available leather-wrapped steering wheel for that European grand-touring touch.



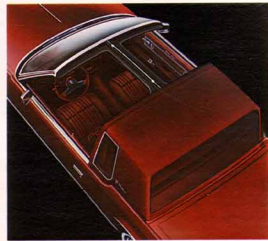
Tilt-Wheel steering. Adjusts to six different driving positions. Swing up for easy entry and exit.



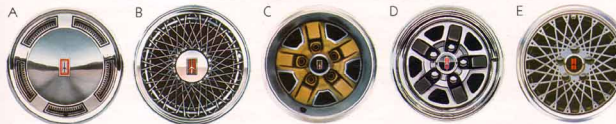
Headlamp-on reminder switch, standard. Sounds and flashes warning when door is opened.



Pulse wiper system. Provides delay-interval wipes.



Available "lift-off" roof gives you the sun, fun and air of a convertible—in a Coupe. Tinted tempered glass panels store in a carrying case. Supreme Coupes only.



Wheel trim. (A) Deluxe wheel discs, standard on all models. Available. (B) Wire wheel discs with locks. (C) Super stock wheels in body color. (D) Chrome super stock wheels. (E) Aluminum-styled with spokes.



Rallye instrument panel cluster. Includes: tachometer, trip odometer, voltmeter and temperature and oil pressure gauges.

Calais Supreme Sedan

**This act
is all together.**

Now four door convenience comes to the advanced technology and sophisticated style of Calais by Oldsmobile. That means easy access to five-passenger comfort. Front bucket seats. Plenty of rear headroom. Soft velour fabrics. And smooth, Delco-GM stereo sounds. All surrounded by solid design, contemporary good looks and computer-precise construction and fit. Take a seat and the performance begins with a spirited 2.5-liter electronically fuel-injected engine, or the available 3.0-liter multiport fuel-injected V6. Then MacPherson strut suspension, front-wheel drive and rack-and-pinion steering make Calais ready to handle whatever road tour you may have in mind. The 1986 Calais Supreme Sedan... traditional Oldsmobile quality, plus the youthful daring to be new.



Calais Supreme

Nonstop good looks.

With exterior styling as sleek as this, it only follows that Calais Supreme should have an equally elegant, special feeling interior. And it does. It starts with five-passenger comfort, fully reclining front bucket seats with built-in lateral and lumbar support and, in Calais Supreme Coupe, an "easy-entry" passenger front seat that slides forward.

Surround all that with standard Paris knit velour, door-to-door carpeting, plus available leather trim, and Calais Supreme becomes unquestionably plush. And for convenience, front, rear and roof-mounted courtesy lamps. Console and front storage areas. And a smart door pocket for hiding travel maps. In short... Calais Supreme is as logical and elegant inside as it is outside.



Calais Supreme Coupe

**A new tradition
for style has begun.**

Calais Supreme Coupe has the perfect blend of sleek exterior styling, understated interior comfort and sporty road handling. Outside, Calais is smooth. Contemporary. And aerodynamic. Designed and built a whole new way, with advanced computers to ensure a precise fit, and multicoat/high-gloss enamel paint to provide an impressive finish. Inside, there's five-passenger spaciousness. Rich velour. Plush carpeting. And fully reclining front bucket seats. And on the road? Experience a smooth, responsive ride from a driving cockpit that puts every function control within easy reach. And enjoy the sportiness of Calais handling with the standard five-speed manual transmission or the available three-speed automatic. Calais Supreme Coupe. It's a new generation of Oldsmobile. And it's started its own new tradition for elegance—outside, inside and on the road.



Calais Sedan

Get into style, fun
and performance... times four.



It's simple multiplication. Now that it's available in a four-door sedan, you've got more ways to "get into" Calais. And that sums up to convenience, plus fun! Now, it's true that Calais was designed to be contemporary, responsive and technologically advanced. And it's easy to be fooled by the plush comfort of Stafford velour front bucket seats. Or the traditionally smooth and quiet Oldsmobile ride. But the fact is, Calais is also designed to be practical. Playful. And affordable. So, if you don't mind getting into all that style, comfort and performance while still getting a great value, then you're going to like "getting into" the four-door convenience of Calais Sedan. Of course, more doors doesn't necessarily mean that you're going to have more fun in Calais. But you might.



Calais Coupe

Built smart...
just for the fun of it.



It's this simple: Calais is built smart. It's designed and assembled using some of the most advanced high-tech automotive facilities ever. It's styled for sleek, good looks. Economical aerodynamics. Practical five-passenger comfort. And it's equipped for sporty, responsive performance, with a 2.5-liter electronically fuel-injected engine, standard five-speed manual transmission or optional 3-speed automatic, front-wheel drive, rack-and-pinion steering and MacPherson strut suspension. And you can specify an available 3.0-liter V6 with response-adding multiport fuel injection. Calais is smart, all right. But get behind the wheel and you forget all about "smart" and "affordable." All you remember is the fun!



Calais ES

**Solid, agile and sleek...
this is automotive fitness.**



Just like a runner prepared for competition, Calais ES has been designed, tested and built for a cross-country tour all its own. Front-wheel drive, rack-and-pinion steering, track-hugging 14" Eagle GTs and a special firm ride suspension system deliver go-anywhere handling. The fine tuned 2.5-liter electronically fuel-injected engine has quick power. Or there's an available 3.0-liter multiport fuel-injected V6 for sprint response. But Calais ES is engineered for more than just enlightening road performance. Advanced technology, robotics and computer-assisted assembly help make it beautifully aerodynamic. Dual patch mirrors, sophisticated black trim, composite headlamps and a sleek front end only add to the good looks. And inside, breakthrough technology is not meant for dazzling, but for driver ease and comfort. Calais ES. Take hold, and ride with the wind.



Calais GT

**Find a road, any road,
and put it to the test.**



Country bends. Fast lanes. City streets. Calais GT is ready for them all. READY With the road-gripping handling of 14" wheels, Eagle GT tires and Oldsmobile's firm Level III (FE3) suspension system. READY With a cockpit driving environment of Vista velour front bucket seats, a Rallye instrument cluster and a leather-wrapped sport steering wheel. READY To turn heads with the hot good looks of low-ride fascia and aero-rocker moldings, bold composite headlamps and an illusive front grille. READY With the road machine response of a console-mounted 5-speed electronically fuel-injected 2.5-liter engine. Or you can opt for an available power-producing 3.0-liter multiport fuel-injected V6/automatic transmission combination. Calais GT. Built tough. Tight. And ready for performance. Now...are you ready for all that?



Calais

More than just color and fabric, this is the comfort and feel that every driving environment should have.

When we say Calais has nonstop good looks, we mean it. That's why color-coordinated trims, pile carpeting and select velours come together inside Calais for a look that's not only beautiful, but comfortable and quiet, too. Calais Coupe and Calais Sedan seating is rich Stafford velour, available in five warm colors. On Calais Supreme Coupe and Sedan, plush Paris knit velour is available in the same colors, plus optional Carmine or Saddle grain leather in seating areas. And sporty Vista velour in Medium Gray or Saddle, is available on Calais ES.



Calais Coupe and Calais Sedan interior with Stafford velour seating in Medium Gray, Dark Teal Blue, Medium Sage, Saddle and Carmine.



Inside Calais GT, Vista velour seats are standard. Choose from two special colors, Carmine or Medium Gray.

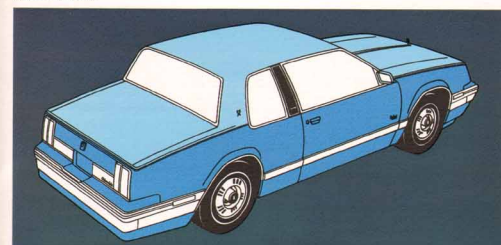


Fully reclining front bucket seats include lateral and lumbar supports. Front passenger seat slides forward for easy entry.



Deluxe steering wheel and cockpit-style instrument cluster with electronic speedometer, trip odometer and easy-to-reach headlamp, washer and wiper controls.

Oldsmobile's multicoat/high-gloss paint finish is available in six two-tone color combinations.



Header-panel mounted courtesy lamp is standard and features an integral storage compartment for convenience.



The available rear deck lid luggage carrier is stylish and practical. It includes a special high-level stop lamp.



New added safety precaution high-level stop lamp is standard.



Smart door pocket for convenient travel map storage.



Sporty 5-speed manual transmission.



Optional leather steering wheel.



A. Standard Deluxe Wheel Disc. B. Simulated Wire Wheel Disc with Locks (N91). C. Super Sport 13" Wheel (N67) with Stainless Steel Trim Rings. D. Aluminum-Styled 13" Wheel (PX1). E. Aluminum-Styled 14" Wheel (N78).



Optional Electronic Instrument Cluster offers the newest technology in electronic instrumentation and features a multiple color crystal (LCD) display that doesn't "wash-out" in daylight. Cluster includes center-mounted digital speed readout, analog bar graph tachometer, animated warning lights and a selectable multifunction gauge for voltmeter, oil pressure and temperature.



Optional auto trip calculator performs usual mathematical functions such as addition, multiplication, etc., and features a high-tech display of time, date, trip distance, elapsed time, estimated travel time and E.T.A. — mileage since fill-up and current fuel economy are also displayed, plus an English/metric conversion switch.

CUTLASS CIERA BROUGHAM/CUTLASS CIERA/CUTLASS CRUISER/GT COUPE PKG./GT SEDAN PKG. STANDARD AND FACTORY-INSTALLED OPTIONAL EQUIPMENT

STANDARD EQUIPMENT AND FEATURES

	CUTLASS CIERA BROUGHAM	CUTLASS CIERA	CUTLASS CRUISER	GT COUPE PKG.	GT SEDAN PKG.
EXTERIOR:					
5 fixed front fender (black on GT package)	S	S	S	S	S
Moldings, hood drip	S	S	S	S	S
Bumper, front and rear, with bright accents (black on GT)	S	S	S	S	S
Beil towel (black on GT)	S	S	S	S	S
Wheel opening	S	A	A	—	—
Rocker panel	S	A	A	—	—
Lower door moldings	S	A	A	—	—
Windshield and backlite (black on GT)	S	S	S	S	S
Mirrors, outside patch style—black—LH remote	A	A	A	S	S
Dual headlamps (optional high beam on GT)	S	S	S	S	S
Deck lid reassurance	S	S	S	S	S
Window frames—black	S	S	S	S	S
INTERIOR:					
Armrests, front and rear	S	S	S	S	S
Ashtrays, instrument panel and rear	S	S	S	S	S
Clay lighter, instrument panel	S	S	S	—	—
Seat, custom bench front with armrest	—	S	S	—	—
Seat, 55/45 divided bench with armrest and individual controls	S	A	A	—	—
Seat, reclining bucket front	—	—	S	S	S
Lamp, interior, door	S	S	S	S	S
Mirror, inside day/night	S	S	S	S	S
Ashtray lamp	S	S	S	S	S
Radio, Delco-GM ETR AM/FM stereo with seek/scan—includes dual rear speakers, fixed mast lenser antenna. Radio may be deleted for credit.	S	S	S	S	S
Radio, hood release	S	S	S	S	S
Headlamp on reminder tone	S	S	S	S	S
Rocker headlamp switch	S	S	S	S	S
Multifunction lever	S	S	S	S	S
DeLuxe steering wheel	S	S	S	—	—
Leather-wrapped steering wheel	—	—	S	—	—
Side window delimiters	S	S	S	S	S
Dome and reading lamp	S	A	A	—	—
DeLuxe seat belts	S	S	S	S	S
Console, with floor shifter	S	A	A	S	S
Instrument panel, Rallye gauge cluster	A	A	A	S	S
Convenience Group, lamps, visor vanity mirror and headlamp on warning chime	S	A	A	A	A
High level stop lamp	S	S	S	S	S
Seat backs rear, split 60/40 down	S	S	S	—	—
Cupholder, well-to-well and door area	S	S	S	—	—
Courtesy lamps, instrument panel	S	S	S	S	S
Courtesy lamp, glove box	S	S	S	S	S
POWER TEAMS:					
2.5-liter V6 with engine with electronic fuel injection*	S	S	S	—	—
2.8-liter V6 with sequential fuel injection*	S	S	S	—	—
Automatic transmission—3-speed*	S	S	S	—	—
Automatic transmission—4-speed*	A	A	A	S	S
CHASSIS:					
Integrally body frame construction	S	S	S	S	S
MacPherson strut front suspension and semi-independent rear	S	S	S	S	S
Rack-and-pinion steering—power-assisted	S	S	S	S	S
Trailing arm rear suspension	S	S	S	S	S
Power brakes with front discs	S	S	S	S	S
Quick take-up brake, master cylinder with diagonal split braking system	S	S	S	S	S
Tires, P185/75R14 steel-belted radial-ply, blackwall—all season	S	S	S	—	—
Tires, P215/60R14 steel-belted radial-ply, blackwall Exige GT	—	—	S	S	S
Wheel trim, deluxe disc	S	S	S	—	—
Space saver spare tire	S	S	S	S	S
FACTORY-INSTALLED OPTIONAL EQUIPMENT††:					
Seat adjuster, 6-way power—LH bucket seat	—	A	A	A	A
Seat adjuster, 6-way power—LH 45/45 seat	—	A	A	A	A
Seat, 55/45 divided bench	—	S	A	A	—
Seat, reclining bucket	—	A	A	S	S
Seat, 45/45 divided bench	—	—	—	—	—
Seat back, reclining passenger side—manual	—	A	A	A	A
Locks, power door	A	A	A	A	A
Soft-top limited glass	A	A	A	A	A
Power side windows	A	A	A	A	A
Seat back, reclining bucket—LH manual	—	A	A	A	A
Deck lid lock release, power	A	A	A	A	A

*See EPA mileage estimates in accompanying Fuel Economy Estimate Sheet.

CUTLASS SUPREME BROUGHAM/CUTLASS SALON/CUTLASS SUPREME STANDARD AND FACTORY-INSTALLED OPTIONAL EQUIPMENT

STANDARD EQUIPMENT AND FEATURES

	CUTLASS SUPREME BROUGHAM	CUTLASS SALON	CUTLASS SUPREME
EXTERIOR:			
Bumper guards, front and rear	S	S	S
Bumper rub strips, front and rear	S	S	S
Ornament, front-end panel—stand-up	S	S	S
Headlamps, halogen	—	S	—
Bright bumper, front and rear	S	S	S
Body side and rocker panels	S	S	S
Vinyl-center and rear edge	—	S	—
Wheel openings	S	S	S
Road grip	S	S	S
Deluxe, full edge	S	S	S
Parking lamp, amber lenses	—	S	—
Antenna, fixed mast fender mount	—	S	—
Mirrors, outside patch style, LH and RH manual (Coupe)	S	S	S
Mirrors, color-coordinated outside, LH and RH remote control	—	S	—
Mirrors, outside bright chrome, LH manual (Sedans)	S	S	S
Mirrors, outside color-coordinated—LH remote control, RH manual	—	A	—
Paint stripe special body side	—	S	—
INTERIOR:			
Armrests, front and rear	S	S	S
Ashtrays, instrument panel and rear	S	S	S
Ashtray lamp, instrument panel	S	S	S
Clay lighter, front	S	S	S
Convenience Group: lamps and visor mirror, chime tones	S	A	A
Carpeting, cut-pile well-to-wall with carpeted lower door panels	S	S	S
Mirror, inside day/night	S	S	S
Custom bench seat with front armrest	—	S	—
Divided 55/45 bench seat with front armrest	—	S	A
Outboard reclining bucket seat	—	—	—
Seat belts, front and rear color-coordinated to individual interiors	S	S	S
Multipurpose column-mounted lever	S	S	S
Radio, Delco-GM AM/FM stereo with seek/scan—includes dual rear speakers and fixed mast lenser antenna. Radio may be deleted for credit.	S	S	S
Dome lamp with automatic interior switches	S	S	S
Rocker headlamp switch	S	S	S
Headlamp on warning tone	S	S	S
Lamp, high level stop	—	S	—
Console, with floor shifter (Coupe)	—	S	—
DeLuxe steering wheel	S	—	S
Leather-wrapped steering wheel	A	S	A
POWER TEAM:			
3.6-liter V6, 2-barrel engine*	S	S	S
3-speed automatic transmission with column shift†	S	S	S
CHASSIS:			
Steering, power special ratio	—	S	—
Steering, power	S	—	S
Brakes, power front discs, drum rear	S	S	S
Tires, P185/75R14 steel-belted radial-ply, blackwall—all season	S	S	S
Wheel discs, deluxe	—	S	—
Wheels, super stock, color-coordinated with stainless steel trim rings	A	S	A
Wheels, 14 x 6	S	S	S
Suspension system, independent front with coil springs and stabilizer bar rear	A	S	A
Supersuspension, front ride and handling	S	S	A
AVAILABLE OPTIONAL EQUIPMENT†:			
Seat adjuster, 6-way power bucket	—	A	A
Seat adjuster, 6-way power—divided seat only	—	A	—
Seat, 55/45 divided bench	—	A	—
Reclining seat back—passenger side manual	A	S	A
Door locks, power	A	A	A
Soft-top limited glass	A	A	A
Tires, windshield only (Fuel Sides)	A	A	A
Electric window controls—includes rear vent windows on sedans	A	A	A
Electric window controls, front only—rear manual (Sedans)	A	A	A
Front bucket seats	—	—	A
Wide lower body side moldings	S	S	A
Trunk lid release, power	A	A	A
Floor mats, auxiliary front with carpet inserts	A	A	A
Floor mats, auxiliary rear with carpet inserts	A	A	A
Body side moldings	A	A	A

AVAILABLE OPTIONAL EQUIPMENT† (Cont.)

	CUTLASS SUPREME BROUGHAM	CUTLASS SALON	CUTLASS SUPREME
Beil towel moldings	S	S	A
Door-edge guards	—	A	A
Vinyl rooftop covering, full-padded (Sedans)	—	A	—
Removable roof panels, tinted tempered glass (Coupe)	—	A	A
Passive system	—	A	A
Almost, electric sliding tinted glass panel (Coupe)	—	A	A
Landou vinyl rooftop covering (Coupe)	—	A	A
Vinyl rooftop covering, full (Sedans)	—	A	—
Deluxe, electric rear window	—	A	A
Four-Season air conditioner	—	A	A
Deluxe, electric rear window	—	A	—
Lamp, combination dome and dual lens reading	—	A	A
Mirrors, color-coordinated outside—LH remote control, RH manual	—	A	S
Mirrors, illuminated vinyl vanity—passenger side	—	A	A
Mirrors, color-coordinated outside, LH and RH remote control	—	A	A
Mirrors, manual control, LH (Coupe)	—	A	—
Console, with floor shifter (Coupe)	—	S	—
Paint scheme, body side	—	A	A
Accent stripes	—	A	A
Firm ride and handling package	—	A	A
Limited slip differential	—	A	A
Engine block heater	—	A	A
Cruise Control, with electronic resume and acceleration features	—	A	A
Engine, 5.0-liter V8, 4-barrel, HO* (included and available only with 442 package)	—	A	—
Engine, 5.0-liter V8, 4-barrel	—	A	A
Transmission, automatic with overdrive*	—	A	A
Steering wheel, leather-wrapped	—	A	S
Steering wheel, full-wrap	—	A	A
Wheels, super stock color-coordinated with stainless steel trim rings	—	A	A
Wheels, super stock chrome	—	A	A
Wheels, aluminum-steel with spokes	—	A	A
Wheels, simulated with wire locks	—	A	A
Tires, P205/70R14 steel-belted radial-ply, blackwall with raised white letters—all season	—	A	A
Tires, P205/70R14 steel-belted radial-ply, white stripe—all season	—	A	A
Tires, P205/70R14 steel-belted radial-ply, white stripe—all season	—	A	A
Tires, P185/75R14 steel-belted radial-ply, white stripe—all season	—	A	A
Convenience Group: lamps, visor vanity mirror and chime tones	—	S	A
Helmets, Tungsten halogen high beam	—	A	—
Battery system, high-capacity	—	A	A
Choke, instrument panel built-in—includes tachometer, trip odometer, voltmeter, temperature and oil pressure gauges	—	A	S
Coat, quilt	—	A	A
Manifold, external lamps, front and rear	—	A	A
Cooling system, extra capacity	—	A	—
Cooling system, high-capacity—recommended for trailer towing	—	A	A
Trim, custom leather, seating area	—	A	—
Radio, Delco-GM ETR AM/FM stereo with seek/scan, digital display clock—includes dual rear speakers	—	A	A
Radio, Delco-GM AM/FM stereo with seek/scan, auto-reverse cassette and digital display clock—includes dual rear speakers	—	A	A
Radio, Delco-GM AM/FM stereo with seek/scan, auto-reverse cassette with equalizer and digital display clock—includes dual rear speakers	—	A	A
Radio, deluxe—fixed mast antenna will be included unless U75 power antenna is ordered	—	A	A
Radio speakers, dual rear with extended range	—	A	A
Antenna, power front fender	—	A	A

*See EPA mileage estimates in accompanying Fuel Economy Estimate Sheet.

CALIS SUPRME/CALIS STANDARD AND FACTORY-INSTALLED OPTIONAL EQUIPMENT

STANDARD EQUIPMENT AND FEATURES

EXTERIOR:	CALIS SUPRME	CALIS
Antenna, fixed mast front mount	S	S
Door frames - black	S	S
Exterior paint color (Coupe)	S	S
Headlamps, halogen high beams	S	S
Mirror, outside driver side - black	-	S
Mirrors, outside - LH remote, RH manual - body color	S	A
Moldings, body side deluxe	S	A
Moldings, rear and panel - light	S	S
Moldings, door and window strip - black	S	S
Moldings, hood center with stand-up ornament	S	S
Moldings, wheel-opening	S	S
Moldings, windshield wiper - black and bright	S	S
Moldings, rear window wiper - black and bright	S	S
Moldings, rocker panel - black	S	S
Moldings, bright roof drip	S	S
Moldings, wide belt reveal - black and bright	S	S
Quarter window module (Coupe)	S	S
Windshield wipers, dual speed	S	S
Windows, soft-ray tinted	S	S
Back-up lamps	S	S

INTERIOR:	CALIS SUPRME	CALIS
Ashtray with lamp, console mount	S	S
Ashtray with lamp, instrument panel (column shift)	S	S
Ashtray, rear console mounted	S	S
Cigarette lighters, front instrument panel	S	S
Cruiser assembly, instrument panel	S	S
Door handle, console mount	S	S
Consoles, full length with shifter - includes mini compartment and integral armrest	S	S
Delights, side window	S	S
Door jamb switches RH and LH, front and rear on Sedan models	S	S
Door lock, instrument panel compartment	S	S
Door map storage	S	A
Headlamps on warning	S	S
Headliner, deluxe	S	S
Heater system	S	S
Lamps and Convenience Group package	S	A
Lamp, rear panel courtesy	S	S
Lamp, glove box storage/trunk	S	S
Lamp, rear console-mounted	S	S
Lamp, rear rail courtesy	S	A
Lamp, high center mount stop	S	S
Mirror, inside driver's	S	S
Radio, Delco-GM ETR AM/FM stereo with seek/scan, digital display clock - includes dual rear speakers	S	S
and fixed mast antenna. Radio may be deleted for credit.	S	S
Recliner, front bucket seats, RH and LH	S	S
Seat belts, deluxe front and rear	S	S
Speakers, dual front instrument panel mount	S	S
Steering wheel deluxe	S	S
Trip odometer	S	S

POWER TRAIN:	CALIS SUPRME	CALIS
2.5-liter L4 (Tech IV) engine with electronic fuel injection*	S	S
5-speed manual transmission with overdrive*	S	S

CHASSIS:	CALIS SUPRME	CALIS
Brakes, low-drag with front discs	S	S
Steering, power-assist rack-and-pinion	S	S
Suspension system, MacPherson front strut with semi-independent rear	S	S
Tires, P185/BOR13 steel-belted radial-ply, blackwall	S	S
Wheels, 13 x 5.5	S	S
Wheel trim, deluxe discs	S	S

FACTORY-INSTALLED OPTIONAL EQUIPMENT††	CALIS SUPRME	CALIS
Seat adjuster, 6-way power - driver side	A	A
Sunroof, tinted glass removable panel	A	A
Door locks, power	A	A
Windows, power side	A	A
Trunk-lid lock release, power	A	A
Door map storage	S	A
Moldings, body side deluxe	S	A
Floor mats, auxiliary front carpet	A	A

FACTORY-INSTALLED OPTIONAL EQUIPMENT:†† (Cont.)

	CALIS SUPRME	CALIS
Rear mats, auxiliary rear carpet	A	A
Moldings, door-edge guard	A	A
Wiper system, auto	A	A
Delights, electric rear window	A	A
Air conditioner, Four Season	A	A
Lamp, interior front-header courtesy and dual lens reading	A	A
Lamp, roof rail courtesy and single reading	A	A
Armrest, front seat - available only with column shift	A	A
Engine, 3.0-liter V6 with Multiport Fuel Injection*	A	A
Transmission, 3-speed automatic*	A	A
Mirrors, outside color-coordinated - LH remote control, RH manual	S	A
Mirror, illuminated visor vanity - passenger side	A	A
Mirrors, outside color-coordinated, LH and RH remote control	A	A
Paint scheme, exterior two-tone	A	A
Accent stripes, body	A	A
Level II Suspension System	A	A
Firm ride and handling package	A	A
Heater, engine block	A	A
Cruise Control, with electronic resume and acceleration features	A	A
Steering wheel, leather-wrapped	A	A
Lock, fuel filler door, remote control	A	A
Steering wheel, tilt-only	A	A
Wheels, super stock color-coordinated with stainless steel trim rings	A	A
Wheels, aluminum-styled 14"	A	A
Wheel discs, aluminum-styled wire with locks	A	A
Wheels, simulated-styled 13"	A	A
Tires, P205/70R13 steel-belted radial-ply, blackwall - all season	A	A
Tires, P205/70R13 steel-belted radial-ply, white-stripe - all season	A	A
Tires, P205/70R13 steel-belted radial-ply, blackwall with raised white letters - all season	A	A
Tires, P185/BOR13 steel-belted radial-ply, white-stripe - all season	A	A
Tires, P215/60R14 steel-belted radial-ply, Eagle GT blackwall - all season	A	A
Tires, P215/60R14 steel-belted radial-ply, blackwall with white outlined letters "Eagle GT"	A	A
Convenience Group, lamps, visor vanity mirror, headlamp-on warning and chime tones	S	A
Cluster, instrument panel Radio	A	A
Instrument panel, auto calculator	A	A
Cluster, instrument panel electronic	A	A
Luggage carrier, deck lid - includes high-level stop lamp	A	A
Trim, custom leather	A	-
Popular Option Value package	A	A
Comair/Velour Group	A	-
Radio, Delco-GM ETR AM/FM stereo with seek/scan, auto-reverse cassette and digital display clock - includes dual rear speakers with extended range	A	A
Radio, Delco-GM ETR AM/FM stereo with seek/scan, auto-reverse cassette with seek/track, graphic equalizer and digital clock - includes dual rear speakers with extended range	A	A
Radio, Delco-GM/Bose Music System, ETR AM/FM stereo with seek/scan, auto-reverse cassette with search/hold and digital display clock - includes Delco-GM/Bose speaker system	A	A
Radio, dual	A	A
Radio speakers, dual rear with extended range	A	A
Antenna, power front loader	A	A

S* Standard equipment. A* Option at extra cost. - Not available. †† Ask about ordering details. Certain items shown are only available when specific related options are purchased.



ETR AM/FM stereo with seek/scan, auto-reverse cassette and digital display clock.

GM's Protection Plan offers service protection in addition to that provided by GM's New Vehicle Limited Warranty. Ask your dealer for details. Coverage available only in U.S.A. and Canada. Why drive without it?

CALIS, OUTLASS CERA, OUTLASS SUPRME AND OUTLASS CRUISER PAINT COLOR

● CALIS
● OUTLASS CERA ●
● OUTLASS CRUISER
● OUTLASS SUPRME

Exterior color colors shown above are only for reference and are not necessarily the processed color. Ask your dealer for Color Chip information.

Important - A word about this catalog: We have tried to make this catalog as comprehensive and factual as possible, and we hope you find it helpful. However, since the time of printing, some of the information you will find here may have been updated. Also, some of the equipment shown or described throughout this catalog is available at extra cost. Your dealer has details and estimates. When ordering, you should ask him to bring you up-to-date. The right is reserved to make changes at any time without notice in prices, colors, materials, equipment, specifications and models. Check with your Olds dealer for complete information.

A word about engines: Oldsmobiles are equipped with engines produced at facilities operated by GM car groups, subsidiaries or affiliated companies worldwide. See your dealer for details. Please refer to the "Fuel Economy Estimate Sheet" for information on engine source and EPA mileage estimates.

A word about assembly, components and optional equipment in these Oldsmobile products: The Oldsmobiles described in this catalog are assembled at facilities operated by General Motors or GM of Canada. These vehicles incorporate thousands of different components produced by car groups or various component divisions of General Motors and by various suppliers worldwide to GM. From time to time during the manufacturing process, it may be necessary in order to meet public demand for particular vehicles or equipment, or to meet federally mandated emissions, safety and fuel economy requirements, or for other reasons, to produce Oldsmobile products with different components or differently sourced components than initially scheduled. All such components have been approved for use in Oldsmobile products and will provide the quality performance associated with the Oldsmobile name. With respect to extra-cost optional equipment, make certain you specify the type of equipment you desire on your vehicle when ordering it from your dealer. Some options may be unavailable when your car is built. Your dealer receives advice regarding current availability of options. You may ask the dealer for this information. GM also requests the dealer to advise you if the option you ordered is unavailable. We suggest that you verify that your car included the optional equipment you ordered or if there are changes, that they are acceptable to you.

Every new 1986 Oldsmobile delivered by an Oldsmobile dealer in the United States comes with a one year, \$10,000 safety belt user insurance certificate. From AIG General Insurance Corporation at no additional charge. \$10,000 will be paid to the estate of an occupant who suffers fatal injuries as a result of any accident involving that vehicle while wearing a GM safety belt. Buckle up every time you drive.

Standard occupant protection features: Manual lap/shoulder belts for driver and right front passenger (driver side includes visual and audible warning system) * Manual lap belts at each rear seat position (and center front, when applicable) * Energy-absorbing steering column * Energy-absorbing instrument panel * Energy-absorbing front seat backrests * Limited safety windshield glass and tempered safety side and rear window glass * Safety interlocking - door latches * Passenger-guard inside door lock handles * Inertia-locking, folding front seat backs * Safety armrests * Head restraints, driver and right front passenger (adjustable/integral)

Standard accident avoidance features: Side marker lights and reflectors * Parking lamps that illuminate with headlights * Four-way hazard warning flasher * Back-up lights * Center high-mounted stop lamp * Directional signal control with lane change feature * Windshield defroster, washer and dual speed wipers * Inside rearview mirror with vinyl-bonded glass * Outside left rearview mirror ("right" also standard on some models) * Brake system with dual master cylinder and warning light * Starter safety switch * Dual action hood latch system * Low-glare finish on instrument panel top, inside windshield moldings, wiper arms/blades, metallic steering wheel surfaces * Illuminated heater and defroster controls * Tires with built-in tread-wear indicators * Tire chains should not be used on a Calais model equipped with P215/60R14 tires because they may cause damage to this vehicle.

Standard theft deterrence features: Audible reminder for ignition key removal * Theft-deterrent steering column lock * Visible vehicle identification number

A word about updated service bulletins: Oldsmobile regularly sends its dealers useful service bulletins about Oldsmobile products. Oldsmobile monitors product performance in the field. We then prepare bulletins for servicing our products better. Now you can get these bulletins, too. Ask your dealer. To get ordering information, call toll free 1-800-551-4123.

THE 1986 OLDSMOBILES:

TORONADO BROUGHAM
NINETY-EIGHT REGENCY BROUGHAM SEDAN
NINETY-EIGHT REGENCY BROUGHAM COUPE
NINETY-EIGHT REGENCY SEDAN
NINETY-EIGHT REGENCY COUPE
DELTA 88 ROYALE BROUGHAM SEDAN
DELTA 88 ROYALE BROUGHAM COUPE
DELTA 88 ROYALE SEDAN
DELTA 88 ROYALE COUPE
CUSTOM CRUISER

CUTLASS SUPREME BROUGHAM SEDAN
CUTLASS SUPREME BROUGHAM COUPE
CUTLASS SUPREME SEDAN
CUTLASS SUPREME COUPE
CUTLASS SALON COUPE
CUTLASS CRUISER
CUTLASS CIERA BROUGHAM SEDAN
CUTLASS CIERA SL COUPE
CUTLASS CIERA SEDAN
CUTLASS CIERA S COUPE

CALAIS SUPREME SEDAN
CALAIS SUPREME COUPE
CALAIS SEDAN
CALAIS COUPE
FIRENZA LX SEDAN
FIRENZA LC COUPE
FIRENZA GT HB COUPE
FIRENZA SEDAN
FIRENZA COUPE
FIRENZA S HB COUPE
FIRENZA CRUISER

There is a special feel
in an



Oldsmobile



1986 OLDSMOBILE FUEL ECONOMY ESTIMATE SHEET

Oldsmobile calls your attention to the following information regarding engines used in their 1986 models.
(Estimate not in bold-face print is an Oldsmobile projection.)

Engine/Model Availability	Ordering Code	VIN Engine Code(a)	Standard/Optional	Transmission*	Fuel Tank Cap. (Gals.)	EPA Estimates			
						City MPG†	Highway MPG	City Range‡	Highway Range
FIRENZA									
1.8-liter (110 CID) L4 EFI‡	LH8	O	Optional	M-5	13.6	27 - 37	37	367 - 503	
			Optional	AMT 3	13.6	24 - 31	31	326 - 421	
2.0-liter (121 CID) L4 EFI	LQ5	P	Standard	M-4	13.6	25 - 32	32	340 - 435	
			Optional	AMT 3	13.6	23 - 29	29	312 - 394	
2.8-liter (173 CID) V6 MFI	LB6	W	Optional	M-4	13.6	19 - 26	26	258 - 353	
			Optional	AMT 3	13.6	19 - 24	24	258 - 326	
FIRENZA CRUISER									
1.8-liter (110 CID) L4 EFI‡	LH8	O	Optional	M-5	13.6	27 - 37	37	367 - 503	
			Optional	AMT 3	13.6	24 - 31	31	326 - 421	
2.0-liter (121 CID) L4 EFI	LQ5	P	Standard	M-4	13.6	25 - 32	32	340 - 435	
			Optional	AMT 3	13.6	23 - 29	29	312 - 394	
2.8-liter (173 CID) V6 MFI	LB6	W	Optional	M-4	13.6	19 - 25	25	258 - 340	
			Optional	AMT 3	13.6	18 - 25	24	244 - 340	
CALAIS									
2.5-liter (151 CID) L4 EFI	L68	U	Standard	M-5	13.6	23 - 34	34	312 - 462	
			Optional	AMT 3	13.6	23 - 32	32	312 - 435	
3.0-liter (181 CID) V6 MFI	LN7	L	Optional	AMT 3	13.6	19 - 27	27	258 - 367	
CUTLASS CIERA									
2.5-liter (151 CID) L4 EFI	LR8	R	Standard	AMT 3	15.7	22 - 32	32	345 - 502	
2.8-liter (173 CID) V6 2-tbl.	LE2	X	Optional	AMT 3	15.7	19 - 26	26	298 - 408	
			Optional	AMT 4	15.7	20 - 28	28	314 - 439	
2.8-liter (173 CID) V6 MFI	LB6	W	Optional	AMT 3	15.7	18 - 25	25	282 - 392	
			Optional	AMT 4	15.7	19 - 28	28	298 - 439	
3.8-liter (231 CID) V6 SFI	LG3	3	Optional	AMT 4	15.7	19 - 30	30	298 - 471	
CUTLASS CRUISER									
2.5-liter (151 CID) L4 EFI	LR8	R	Standard	AMT 3	15.7	21 - 28	28	329 - 439	
2.8-liter (173 CID) V6 2-tbl.	LE2	X	Optional	AMT 3	15.7	19 - 25	25	298 - 392	
			Optional	AMT 4	15.7	18 - 26	26	282 - 408	
2.8-liter (173 CID) V6 MFI	LB6	W	Optional	AMT 3	15.7	18 - 24	24	282 - 376	
			Optional	AMT 4	15.7	19 - 25	25	298 - 392	
CUTLASS SUPREME									
3.8-liter (231 CID) V6 2-tbl.	LD5	A	Standard	AMT 3	18.1	19 - 24	24	343 - 434	
5.0-liter (307 CID) V8 4-tbl.	LV2	Y	Optional	AMT 3	18.1	17 - 23	23	307 - 416	
			Optional	AMT 4	18.1	18 - 25	25	325 - 452	
5.0-liter (307 CID) V8 4-tbl.	LG8	9	Optional	AMT 4	18.1	18 - 25	25	325 - 452	
DELTA 88									
3.0-liter (181 CID) V6 MFI	LN7	L	Standard	AMT 4	18.0	18 - 28	28	324 - 504	
3.8-liter (231 CID) V6 SFI	LG3	3	Optional	AMT 4	18.0	19 - 30	30	342 - 540	
CUSTOM CRUISER									
5.0-liter (307 CID) V8 4-tbl.	LV2	Y	Standard	AMT 4	22.0	16 - 24	24	352 - 528	
NINETY-EIGHT									
3.8-liter (231 CID) V6 SFI	LG2	B	Standard	AMT 4	18.0	19 - 30	30	342 - 540	
TORONADO									
3.8-liter (231 CID) V6 SFI	LG2	B	Standard	AMT 4	18.0	19 - 30	30	342 - 540	

(a) VIN (Vehicle Identification Number) Engine Code is the eighth entry (letter or number) from the left on the vehicle serial number plate. This plate is located on the top portion of the driver's side of the instrument panel and can be viewed from outside the car by looking through the windshield. (†) Use for comparison. Your mileage and range may differ. Driving range estimates are obtained by multiplying EPA city and highway estimates by the fuel tank capacity. ‡Produced in Brazil.

*M-4) 4-Speed Manual Transmission (M-5) 5-Speed Manual Transmission (AMT 3) 3-Speed Automatic Transmission (AMT 4) 4-Speed Automatic Transmission (MFI) Multiport Fuel Injection (SFI) Sequential Port Fuel Injection (EFI) Electronic Fuel Injection
Litho in U.S.A.

THE 1986 OLDSMOBILES:

TORONADO BROUGHAM
NINETY-EIGHT REGENCY BROUGHAM SEDAN
NINETY-EIGHT REGENCY BROUGHAM COUPE
NINETY-EIGHT REGENCY SEDAN
NINETY-EIGHT REGENCY COUPE
DELTA 88 ROYALE BROUGHAM SEDAN
DELTA 88 ROYALE BROUGHAM COUPE
DELTA 88 ROYALE SEDAN
DELTA 88 ROYALE COUPE
CUSTOM CRUISER

CUTLASS SUPREME BROUGHAM SEDAN
CUTLASS SUPREME BROUGHAM COUPE
CUTLASS SUPREME SEDAN
CUTLASS SUPREME COUPE
CUTLASS SALON COUPE
CUTLASS CRUISER
CUTLASS CIERA BROUGHAM SEDAN
CUTLASS CIERA SL COUPE
CUTLASS CIERA SEDAN
CUTLASS CIERA S COUPE

CALAIS SUPREME SEDAN
CALAIS SUPREME COUPE
CALAIS SEDAN
CALAIS COUPE
FIRENZA LX SEDAN
FIRENZA LC COUPE
FIRENZA GT HB COUPE
FIRENZA SEDAN
FIRENZA COUPE
FIRENZA S HB COUPE
FIRENZA CRUISER

There is a special feel
in an



Oldsmobile



1986
Oldsmobile

There is a special feel
in a Cutlass Ciera,
Cutlass Cruiser,
and Calais.

