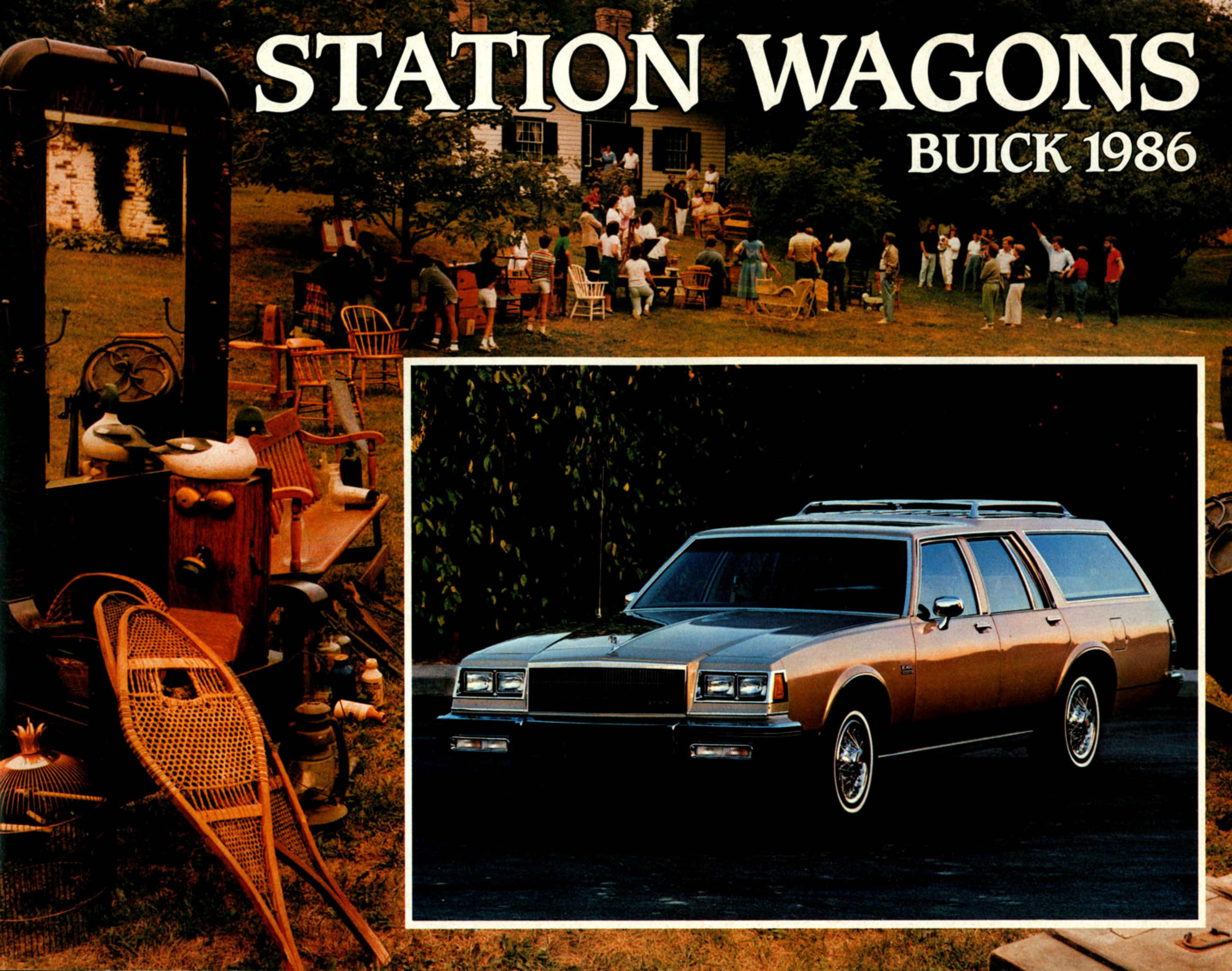


# STATION WAGONS

BUICK 1986







## LeSABRE ESTATE WAGON

The LeSabre Estate Wagon serves as a handsome example of traditional family transportation with a generous overlay of luxury. Epitomizing the best qualities of the full-size wagon as interpreted by Buick, the LeSabre Estate Wagon offers room, comfort, luxury, and cargo space in an automobile that is classic in appearance.

The LeSabre's front-engine/rear-drive design is powered by a smooth 5.0-litre, four-barrel carbureted V-8. Coupled to the four-speed automatic overdrive transmission, this popular engine delivers outstanding performance.

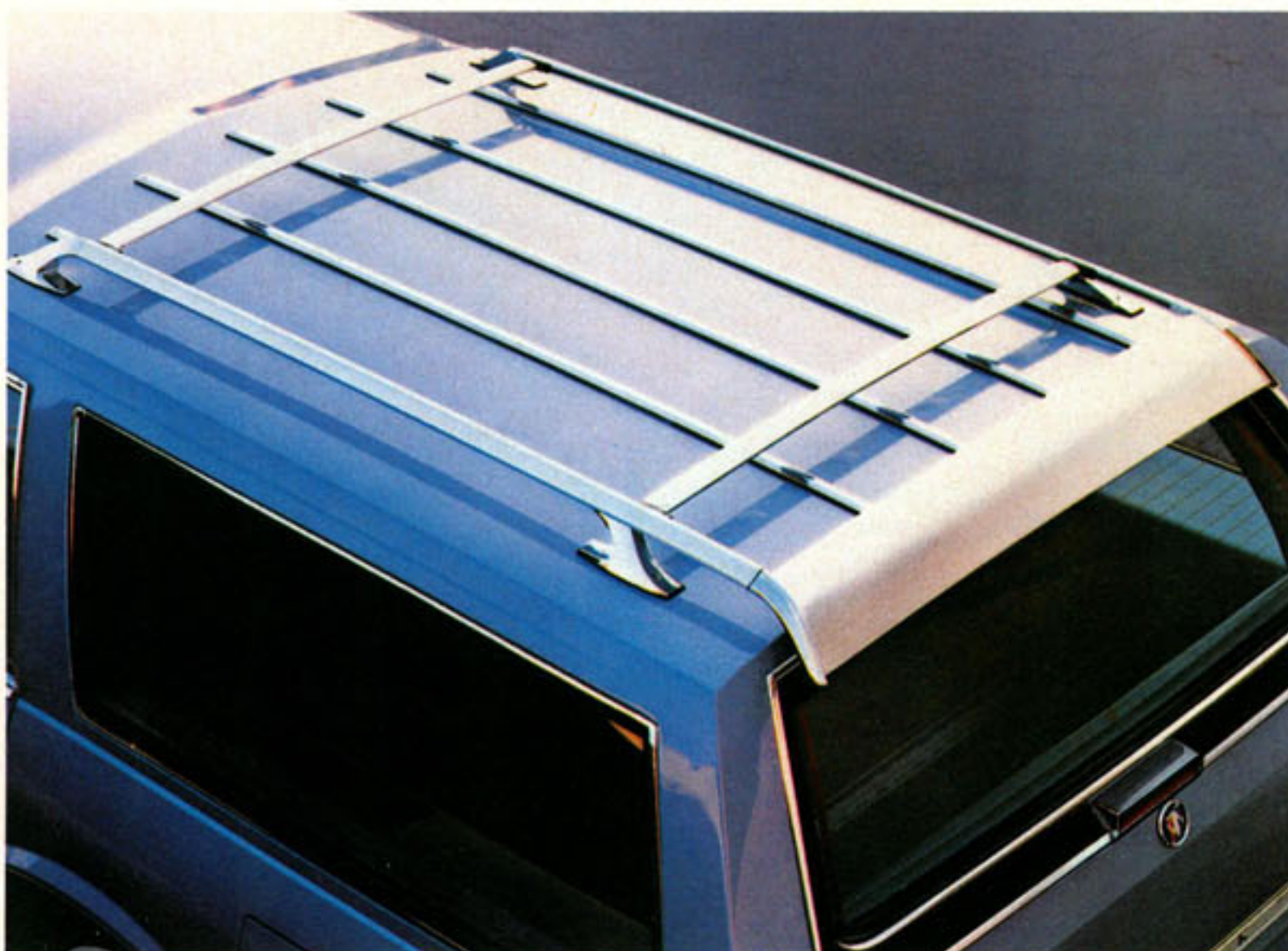
Inside, the LeSabre's cargo-hauling capacity is 2490 litres (87.9 cubic feet) of handsomely finished space. The tailgate opens in either of two ways and the rear seats fold flat for optimum usability of cargo space. A power window and remote power lock for the tailgate enhance ease of operation.

A choice of seating arrangements is available. Standard notchback seat (below top) or available 55/45 seat (below bottom). There is a choice between vinyl or cloth upholstery, and the two materials may be mixed to provide a pleasing combination of luxury in the front and practicality in the rear. In standard trim, the LeSabre Estate Wagon seats six adults in roomy comfort. Air conditioning is standard. A third seat, in vinyl, increases the passenger capacity to eight, and can be ordered from the available equipment list.

The LeSabre Estate Wagon is equipped with low-drag front disc/rear drum brakes, computer-selected coil-spring suspension, and a full-perimeter frame. Steel-belted, radial-ply whitewall tires and alloy wheels are also standard.

To ensure that the Estate Wagon delivers every element of the Buick ride-quality, every component of the standard heavy-duty suspension has been engineered with passenger comfort in mind.

LeSabre Estate Wagon: Full-size. Value-packed. Buick style and grace throughout. A choice that's a pleasure to make.







## CENTURY WAGONS

The Century Wagon combines the style and front-wheel-drive technology of the Century sedans and coupes with the space and versatility of a mid-size station wagon. And a winning combination it is, offering the active wagon buyer a good-looking, agile automobile that's rewarding to drive.

The Century Wagon may be ordered as a Century Custom Wagon (top), with the emphasis on hard-work and hard-play applications, or as the Century Estate Wagon (below), offering extra luxury touches.

Standard power for both versions is a modern, 2.5-litre four-cylinder engine with electronic fuel injection for added responsiveness and efficiency. The standard transmission is a three-speed automatic. Two available engines provide the kind of power your own style of wagon ownership calls for. A 2.8-litre V-6 with a 2-barrel carburetor represents the first step up in horsepower. Beyond that, the new 3.8-litre V-6 with sequential-port fuel injection and quiet, low-friction roller valve lifters can be specified—the very latest version of the most powerful naturally aspirated V-6 offered by Buick.

Incredible as it may seem, it is possible to seat eight full-size persons in this contemporary size wagon. A rearward-facing seat, with room for two, can augment the standard two-seat arrangement that seats six. The Century Wagon seats its passengers on comfortable, roomy cloth or vinyl seats both front and rear. (Estate, shown below left, Custom, shown below right.)

Carpeting also covers the easy-to-reach cargo area, which contains a generous 2108 litres (74.4 cubic feet) of usable space. A split, folding rear seatback adds to the versatility of the cargo area, allowing seating capacity to be retained while still carrying a considerable amount of material.

In the convenience and comfort realm, the Century Wagon meets the highest Buick standards. Add the wide selection of available equipment and the Century Wagon becomes even more attractive as a practical, versatile, enjoyable vehicle.







## SKYHAWK WAGONS

No wagon lineup is complete without one that can be called just plain fun. Buick's entry in this category is called Skyhawk—a front-wheel-drive wagon that's not only up front in high-level sportiness but also in the application of high-technology automotive advances.

Offered as a Custom or a Limited, Skyhawk Wagons provide seating for five, with front bucket seats and a rear bench seat with a split, folding seatback. The front seats in both the Custom (below top) and Limited (below bottom) may be reclined.

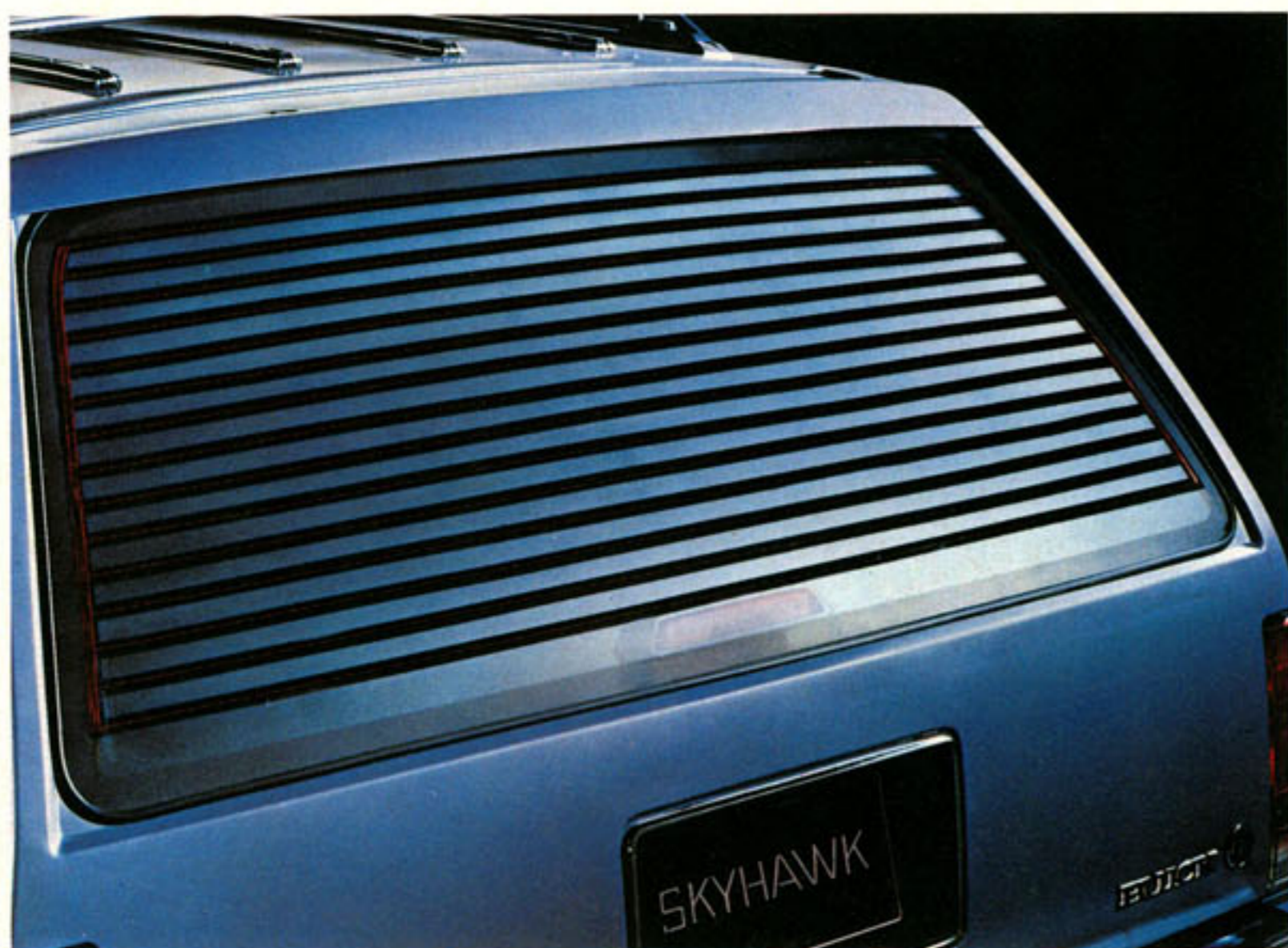
The transverse-engine, front-wheel-drive design, in standard trim, offers a peppy 2.0-litre, four-cylinder engine with electronic fuel injection. This responsive unit is matched to a four-speed manual gearbox that's made to perform or an available three-speed automatic transmission.

The optional engine offered for the Skyhawk Wagon is the 1.8-litre, overhead-cam, four-cylinder with electronic fuel injection, mated to the five-speed manual transmission with overdrive.

On the practical side, a look at the Skyhawk's cargo area reveals a capacity of 1827 litres (64.4 cubic feet), a space large enough for most undertakings at work or play. Skyhawk Wagons have a one-piece, top-hinged tailgate that swings up and out of the way for ease of access and loading.

Additionally, there's a built-in rear-window defogger and air deflector (left), and the rear seatback is a folding, split design that allows the cargo area to handle long objects—skis, for example—and yet retain room for a rear-seat passenger.

With all its mechanical advantages and creature comforts, the Skyhawk presents a remarkable picture—a wagon that carries passengers and cargo with ease and versatility, at the same time retaining the virtues and rewards of a Buick-caliber sports sedan. It's no easy task to offer either practical economy or driving excitement—or both. The Skyhawk Wagon does it.





### A word about engines

These Buicks are equipped with GM-built engines produced by various divisions and affiliates of General Motors Corporation and GM of Canada.

#### ELECTRA ESTATE

Order Code	Displacement	Carb. bbl.	Cyl.	†V.I.N.	Source	Transmission
LV2	5.0 litre (307 CID)	4	V8	Y	(1)	O.D. Automatic

Produced by GM (1) Oldsmobile Division.

#### LeSABRE ESTATE

Order Code	Displacement	Carb. bbl.	Cyl.	†V.I.N.	Source	Transmission
LV2	5.0 litre (307 CID)	4	V8	Y	(1)	O.D. Automatic

Produced by GM (1) Oldsmobile Division.

#### CENTURY WAGONS

Order Code	Displacement	Carb. bbl.	Cyl.	†V.I.N.	Source	Transmission
LR8	2.5 litre (151 CID)	E.F.I.	4	R	(1)	Automatic
LE2	2.8 litre (173 CID)		V6	X	(3)	O.D. Automatic
LG3	3.8 litre (231 CID)	S.F.I.	V6	3	(2)	O.D. Automatic

Produced by GM (1) Pontiac Division (2) Buick Division (3) Chevrolet Division

#### SKYHAWK WAGONS

Order Code	Displacement	Carb. bbl.	Cyl.	†V.I.N.	Source	Transmission
LQ5	2.0 litre (121 CID)	E.F.I.	4	P	(1)	4-speed Manual Automatic
LH8	1.8 litre (110 CID)	E.F.I.	4	O	(3)	5-speed Manual Automatic

Produced by GM (1) Chevrolet Division (3) GM Brazil

†The V.I.N. (Vehicle Identification Number) Engine Code is the eighth entry (letter or numeral) from the left on the vehicle serial number plate. The vehicle serial number plate is located on the top portion of the driver's side of the instrument panel and can be viewed from the exterior of the car by looking through the windshield.

	Electra Estate	LeSabre Estate	Estate	Century	Custom	Limited	Skyhawk	Custom
Engines—5.0 litre V8	S	S	—	—	—	—	—	—
3.8 litre V6	—	—	A	—	A	—	—	—
2.8 litre V6	—	—	A	—	A	—	—	—
2.5 litre 4-cyl.	—	—	S	—	S	—	—	—
2.0 litre 4-cyl.	—	—	—	—	—	S	—	S
1.8 litre 4-cyl.	—	—	—	—	—	A	—	A
Transmissions—4-spd manual	—	—	—	—	—	S	—	S
5-spd manual	—	—	—	—	—	A	—	A
Automatic	—	—	S	—	S	A	—	A
Overdrive Automatic	S	S	A	—	A	—	—	—
Brakes—Power, front disc/rear drum	S	S	S	—	S	S	—	S
Steering—Power	S	S	S	—	S	A	—	A
Tires—225/75 R x 15 Radial	S	S	—	—	—	—	—	—
185/75 R x 14 Radial	—	—	S	—	S	—	—	—
175/80 R x 13 Radial	—	—	—	—	—	S	—	S
Self sealing tires	A	A	A	—	A	—	—	—
Firm Ride & Handling Suspension	S	S	A	—	A	A	—	A
Tilt steering	S	A	A	—	A	A	—	A
Automatic level control	A	A	A	—	A	—	—	—
Limited slip axle	A	A	—	—	—	—	—	—
Cruise Control	A	A	A	—	A	A	—	A
Seats—Notchback	—	S	—	—	S	—	—	—
55/45 divided	S	A	S	—	A	—	—	—
45/55 divided	—	—	A	—	—	—	—	—
Reclining bucket	—	—	—	—	—	S	—	S
3rd seat	A	A	A	—	A	—	—	—
Mouldings—Rocker	S	S	S	—	S	S	—	S
Body-side protective	A	A	A	—	A	S	—	S
Wheel opening	S	S	S	—	S	S	—	S
Door edge	S	A	A	—	A	A	—	A
Power—Seat, 6-way	A	A	A	—	A	A	—	A
Door locks	S	A	A	—	A	A	—	A
Windows	S	A	A	—	A	A	—	A
Tailgate release	S	A	A	—	A	A	—	A
Engine Block heater	A	A	A	—	A	A	—	A
Roof luggage carrier	S	A	A	—	A	A	—	A
Air conditioning	S	S	A	—	A	A	—	A
Rear window defroster	S	S	S	—	S	S	—	S
Glass—Soft Ray tinted	S	S	A	—	A	A	—	A
Controlled cycle wipers	A	A	A	—	A	A	—	A
Compact spare tire	S	S	S	—	S	S	—	S
Cigarette lighter	S	S	S	—	S	S	—	S
H.D. Delco Freedom battery	S	S	S	—	S	S	—	S
Tungsten halogen headlamp	A	A	A	—	A	A	—	A
Wheels—Deluxe covers	—	—	S	—	S	S	—	S
Wire covers	A	A	A	—	A	A	—	A
Chrome wheels	A	A	—	—	—	—	—	—
Aluminum wheels	S	S	A	—	A	A	—	A
Twilight Sentinel	A	A	A	—	A	—	—	—
Woodgrain panelling	S	A	A	—	A	—	—	—
Console	—	—	A	—	A	S	—	S
Sunroof	—	—	A	—	A	—	—	—
Rear air deflector	A	A	A	—	A	—	—	—
Radio—AM	—	S	S	—	S	S	—	S
AM/FM Stereo	S	A	A	—	A	A	—	A
AM/FM Stereo/Cassette	A	A	A	—	A	A	—	A
C.B.	A	A	—	—	—	—	—	—
Antenna—Power	A	A	A	—	A	A	—	A

S-Standard A-Available (extra cost) --Not Available



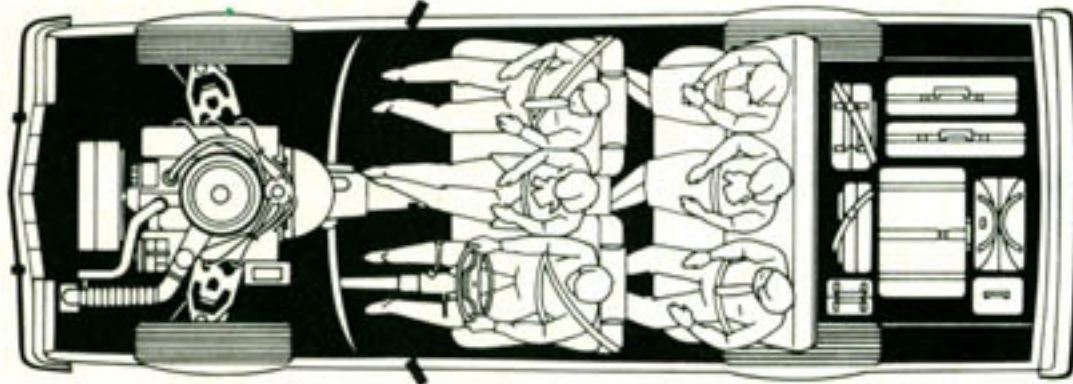
# 1986 WAGONS FACTS & FIGURES

Select the combination of "extras" that make your Buick uniquely yours from the long list of standard and available features, some of which are given on the next page. Ask your dealer about group packages and the many other features not indicated. Your dealer will also advise you of the availability of the various items on the model of your choice.

## ELECTRA ESTATE

### MODEL

Electra Estate Wagon—4-Door Station Wagon

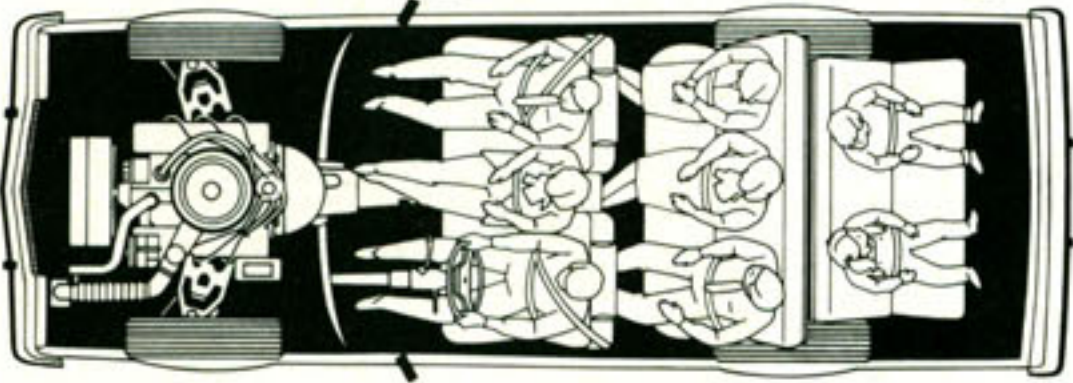


DIMENSIONS	mm.	in.
Wheelbase	2945	115.9
Overall Length	5600	220.5
Overall Width	2014	79.3
Height	1507	59.3
Tread—front/rear	1580/1626	62.2/64.0
Headroom—front/rear	1005/999	39.6/39.3
Legroom—front/rear	1072/946	42.2/37.2
Shoulder Room—front/rear	1547/1550	60.9/61.0
Hiproom—front/rear	1400/1398	55.1/55.0
Cargo Volume	2492 litres	88.0 cu. ft.
Fuel Tank Capacity gas	83.3 litres	18.3 gal.

## LeSABRE ESTATE

### MODEL

LeSabre Estate Wagon—4-Door Station Wagon

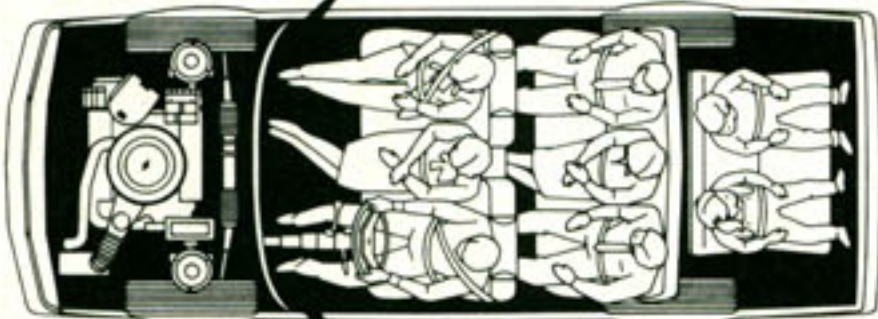


DIMENSIONS	mm.	in.
Wheelbase	2945	115.9
Overall Length	5600	220.5
Overall Width	2014	79.3
Height	1507	59.3
Tread—front/rear	1580/1626	62.2/64.0
Headroom—front/rear	1005/999	39.6/39.3
Legroom—front/rear	1072/946	42.2/37.2
Shoulder Room—front/rear	1547/1550	60.9/61.0
Hiproom—front/rear	1400/1398	55.1/55.0
Cargo Volume	2492 litres	88.0 cu. ft.
Fuel Tank Capacity gas	83.3 litres	18.3 gal.

## CENTURY WAGONS

### MODELS

Century Custom—4-Door Station Wagon  
Century Estate Wagon—4-Door Station Wagon

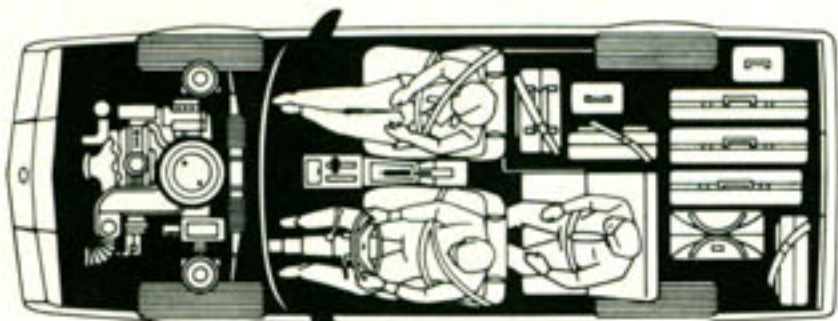


DIMENSIONS	mm.	in.
Wheelbase	2664	104.9
Overall Length	4851	191.0
Overall Width	1763	69.4
Height	1377	54.2
Tread—front/rear	1492/1448	58.7/57.0
Headroom—front/rear	980/987	38.6/38.9
Legroom—front/rear	1070/885	42.1/34.8
Shoulder Room—front/rear	1427/1427	56.2/56.2
Hiproom—front/rear	1331/1338	52.4/52.7
Cargo Volume	2108 litres	74.4 cu. ft.
Fuel Tank Capacity gas	59.4 litres	13.0 gal.

## SKYHAWK WAGONS

### MODELS

Skyhawk Custom—4-Door Station Wagon  
Skyhawk Limited—4-Door Station Wagon

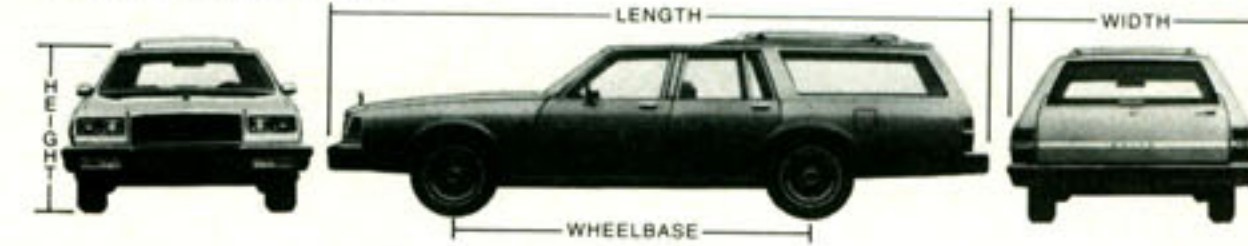


DIMENSIONS	mm.	in.
Wheelbase	2571	101.2
Overall Length	4503	177.3
Overall Width	1651	65.0
Height	1381	54.4
Tread—front/rear	1406/1401	55.4/55.2
Headroom—front/rear	976/989	38.3/38.8
Legroom—front/rear	1071/852	42.2/33.7
Shoulder Room—front/rear	1365/1366	53.7/53.8
Hiproom—front/rear	1244/1250	49.0/49.2
Cargo Volume	1827 litres	64.5 cu. ft.
Fuel Tank Capacity	53 litres	11.6 gal.

## ELECTRA ESTATE



## LeSABRE ESTATE



## CENTURY WAGONS



## SKYHAWK WAGONS



## STANDARD FEATURES ON ALL BUICKS

### SAFETY FEATURES

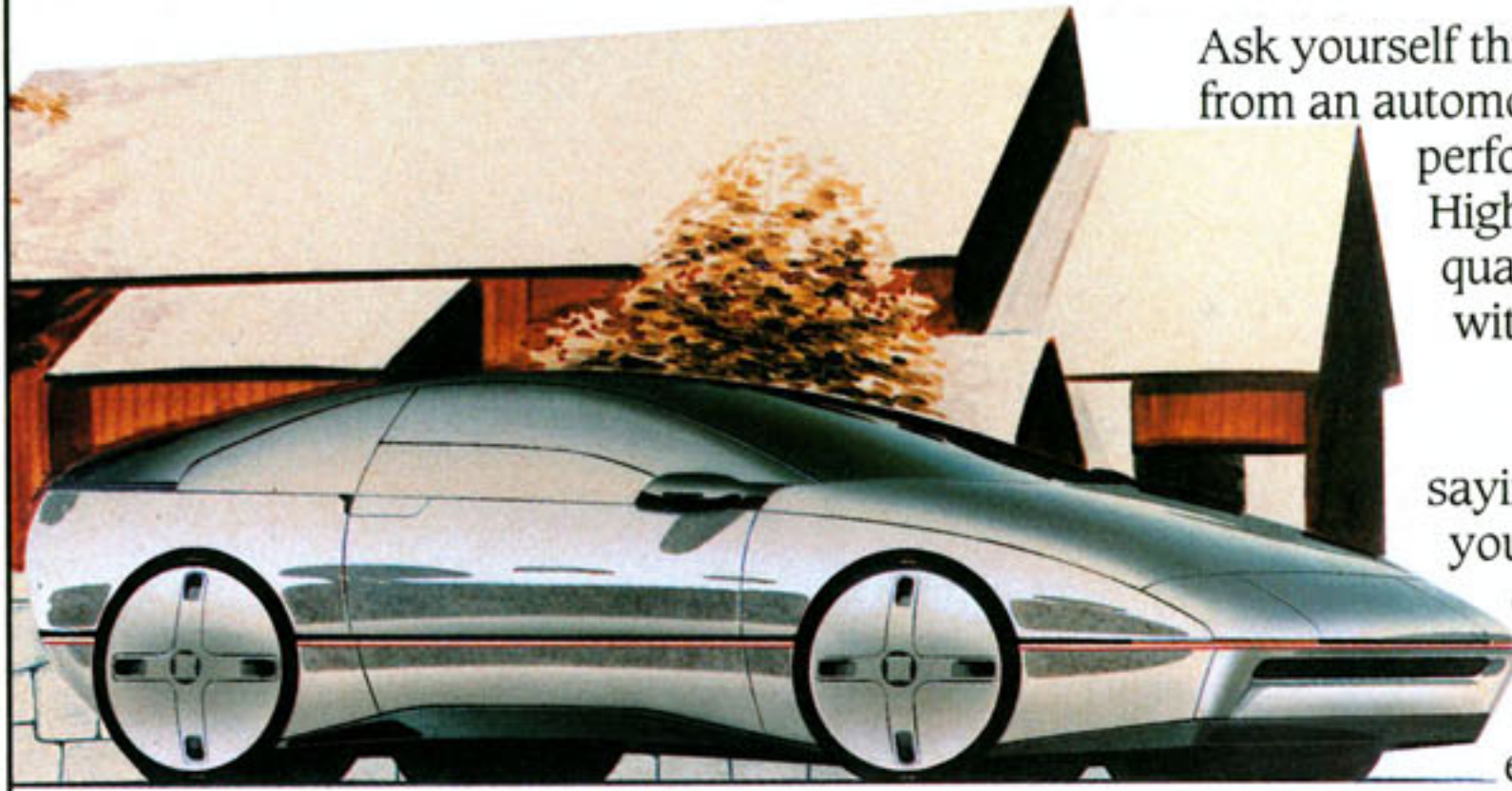
**OCCUPANT PROTECTION** • Manual lap/shoulder belts for driver and right front passenger (driver's side includes visual and audible warning system) • Manual lap belts at each rear seat position (and centre front, when applicable) • Energy absorbing steering column • Energy absorbing instrument panel • Energy absorbing front seatback tops • Laminated safety windshield glass and tempered safety side and rear window glass • Safety interlocking door latches • Passenger-guard inside door lock handles • Inertia-locking, folding front seat backs • Safety armrests • Head restraints, driver and right front passenger (adjustable/integral) • Dual sun visors • Smooth contoured door and window regulator handles • Pressure lock radiator cap.

**ACCIDENT AVOIDANCE** • Side marker lights and reflectors • Parking lamps that illuminate with headlamps • Four-way hazard warning flasher • Back-up lights • High-mounted stop lamps • Directional signal control (and lane change feature) • Windshield defroster, washer and dual speed wipers • Inside rearview mirror with vinyl-bonded glass • Outside left rearview mirror • Brake system with dual master cylinder and warning light • Starter safety switch • Dual action hood latch system (except rear opening Electra and LeSabre) • Low glare finish on instrument panel top, inside windshield mouldings, wiper arms/blades, metallic steering wheel surfaces • Illuminated heater and defroster controls • Illuminated windshield wiper and washer controls (if on I/P) • Tires with built-in tread-wear indicators • Safety road wheel rims • Audible brake lining wear indicators, all disc brakes • Self-adjusting brake feature • Pressure relief fuel cap • Rear window defogger.

**THEFT DETERRENCE** • Audible reminder for ignition key removal • Theft deterrent steering column lock • Visible vehicle identification number • Remote inside hood release • Theft deterrent key system (separate key for ignition).



# BUICK. ARTISTRY AND TECHNOLOGY IN HARMONY.



Ask yourself this question: "What do I really want from an automobile?" Do you want luxury? High performance? Economy? Space? Beauty? High technology? Do you want *all* these qualities? Chances are, if you're honest with yourself, you do.

Most drivers want all those things.

At Buick, honesty prevents us from saying to you, "Here are all the things you've ever wanted in a car." We can't deliver on that promise. No one can.

But what we can do is offer you a choice of finely crafted and engineered automobiles; invite you

to select from a full line of cars, each one of which is intended to satisfy a particular set of driver wants and needs.

The task of designing and building better Buicks is a job with no outer limits. A constant seeking of balance: comfort with agility, practicality with luxury, durability with style. And always, Buick's tradition of balancing artistry with technology.

This balance, and the constant search for it by dedicated engineers and designers, appears in every Buick built. It is a Buick component in which we take considerable pride, the ingredient that sets the cars on these pages apart. The quality that makes a Buick a Buick.

## COMMITMENT TO



General Motors recognizes that taking delivery of your new vehicle is a significant event. To

ensure that your delivery experience contributes to your overall satisfaction, we have implemented a "Commitment to Excellence" Delivery Procedure.

This procedure includes a thorough new vehicle inspection by both the service technician and salesperson, a full tank of fuel, and a follow-up survey to determine your satisfaction with the delivery experience.

General Motors "Commitment to Excellence" is yet another excellent reason to "Look at GM Today."



## Protection Plan

While there are many service contracts available on the market today, *there is only one which gives you an agreement directly with General Motors.* It is the one with the GM Protection Plan logo shown above. This logo on all Plan material assures you that the service contract you are buying is the GM Plan, we believe the finest such program available to GM owners.

The GM Protection Plan provides additional protection during and after the new vehicle limited warranties. Ask your General Motors dealer for details and information about the *genuine GM Protection Plan.*



5-year unlimited kilometres corrosion perforation warranty. On all 1986 GM passenger cars. Ask your dealer for details.

## For Your Protection\*

1. New Vehicle Limited Warranty – 12 months or 20,000 kilometres, whichever comes first.
2. Powertrain Coverage – 36 months or 60,000 kilometres, whichever comes first on gasoline engines (\$100 deductible).
3. Owner Assistance Program.
4. Special Policy Adjustment Program.

\*Ask your dealer for details.

## A WORD ABOUT THIS CATALOGUE

The vehicles described in this catalogue incorporate components produced by General Motors of Canada Limited and related companies and suppliers. During manufacturing, different components than initially scheduled may be used.

All illustrations and specifications contained in this catalogue are based on the latest product information at time of publication approval. The right is reserved to make changes at any time, without notice, in prices, colours, materials, equipment, specifications and models, and to discontinue models. Some of the equipment shown or described throughout this catalogue is available at extra cost or can only be ordered in conjunction with the other optional equipment. Some options may not be available when your vehicle is built. Check your dealer for complete information.



Official Supplier  
to The 1986  
World Exposition







## ELECTRA ESTATE WAGON

A fine automobile need not suffer loss of luxury just because it boasts the cargo-carrying capacity of a wagon. The Buick Electra Estate Wagon serves to underscore this.

The retention of luxury appointments and Buick's laudable ride qualities becomes all the more remarkable upon examining the Electra Estate Wagon's capacity for handling both passengers and cargo—separately or together.

In its standard form, the Electra Estate Wagon provides roomy seating for six. This capacity may be expanded to eight with the addition of the optional third seat (shown below), done in harmonizing vinyl.

Whatever passenger seating configuration you choose, the cargo capacity, with the rear seats stowed, remains a spacious 2490 litres (87.9 cubic feet). The tailgate opens down or out for added ease of use.

For power, the Electra Estate Wagon boasts the smooth, muscular 5.0-litre V-8 with four-barrel carburetion. This popular and proven power source drives through a four-speed automatic transmission equipped with overdrive.

Among the standard luxury and convenience accoutrements, you will find a tilt-steering column, electric door locks, power windows, and a remote electric lock for the tailgate. Those are the beginning.

The Electra Estate Wagon's standard equipment manifest also offers air conditioning, tinted glass, a roof-mounted luggage rack for even more cargo-carrying capacity, aluminum alloy wheels and a 2-way power seat for the driver.

There are many more standard features, all geared toward making the Electra Estate Wagon the ultimate in large-capacity luxury motoring. And, as you would expect, the listing of optional equipment and accessories is a lengthy one.

Luxury. Beauty. Comfort. Capability. The elegant Buick Electra Estate Wagon summed up in four words.

