

LESABRE

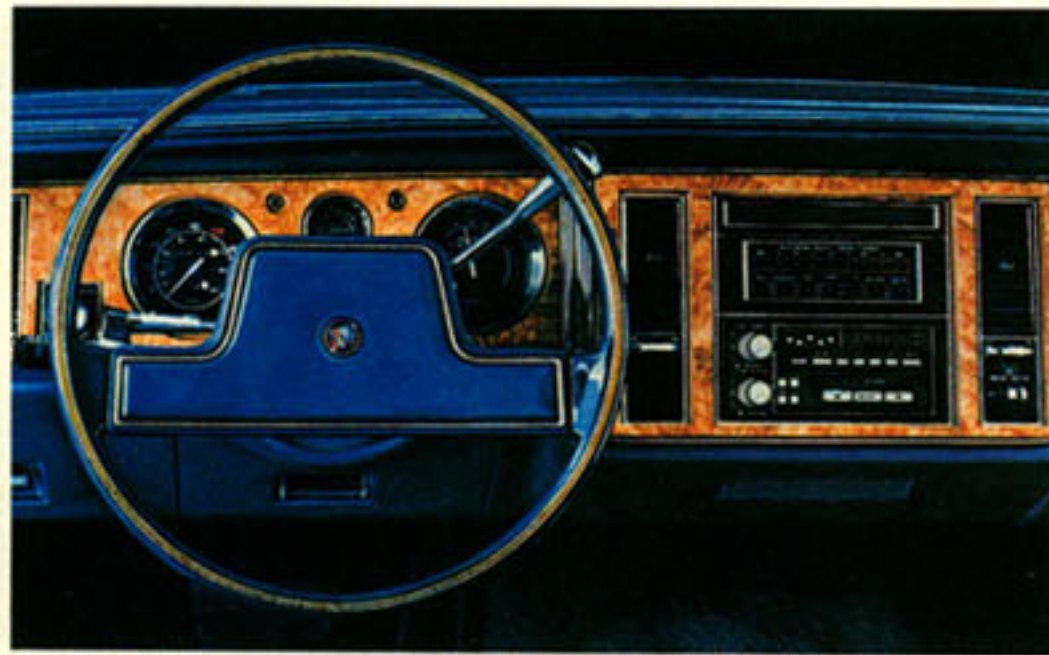


BUICK 1984

**1984 BUICK LeSABRE.
A FULL-SIZE VALUE,
IF THERE EVER WAS ONE.**

The Buick LeSabre makes a lot of sense to a lot of people. The reason for that may lie in its combination of family car and luxury car attributes.

First of all, LeSabre is sensible, offering generous space for six passengers. Yet, LeSabre really doesn't look like a family car.



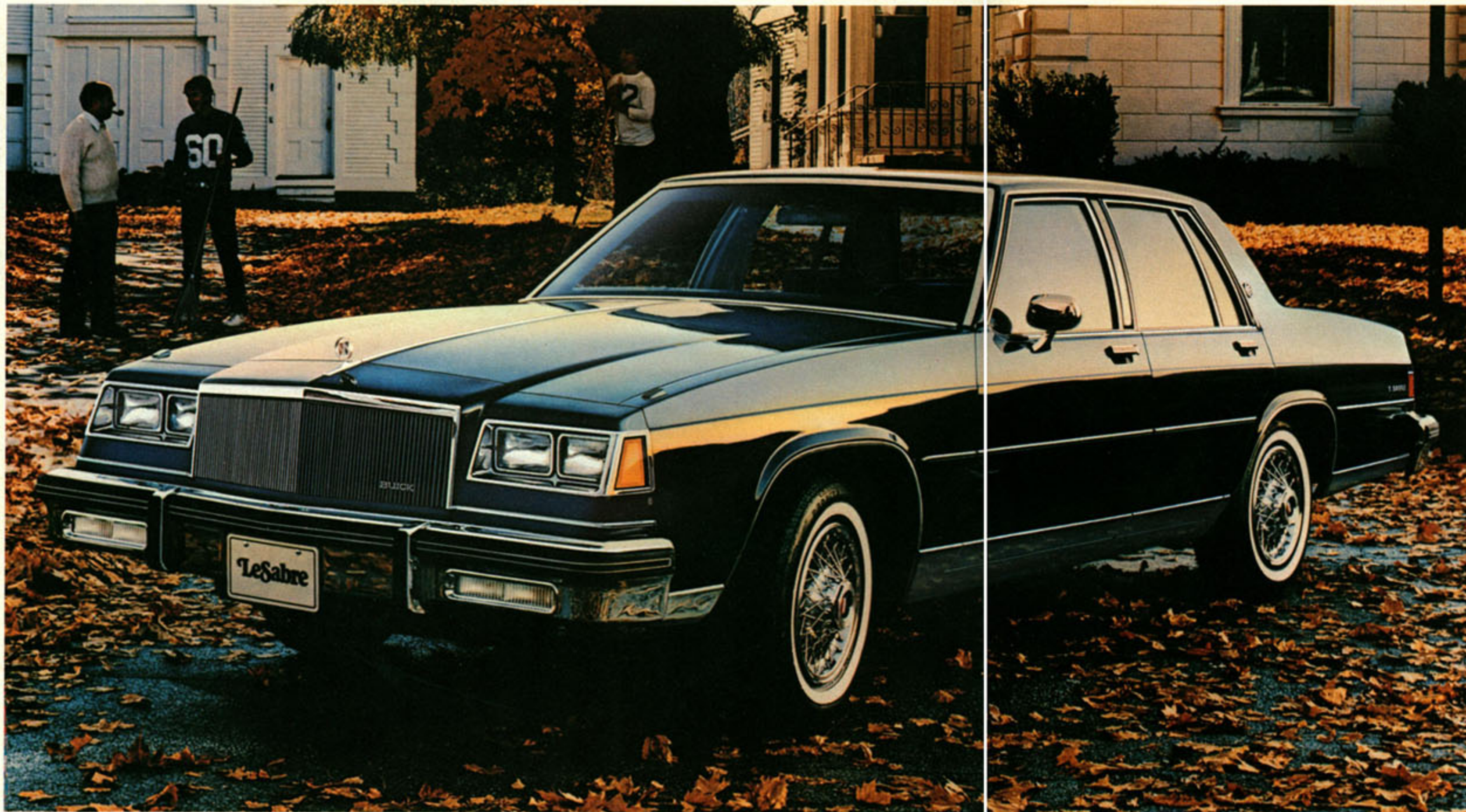
Instruments in Canada are metric where required.

It does, however, look like a Buick. And that means a generous helping of graceful lines, elegant touches and thoughtful accents. Its classy new look, front and back. Its color-keyed body-side mouldings, front and rear protective bumper strips and bumper guards. All standard.

Inside, of course, LeSabre offers comfort and luxury in uncommon amounts. There's a wide array of standard features to practically guarantee your driving pleasure. New standard equipment includes remote control left and manual control right door mirrors on all LeSabre models and a redesigned steering wheel, plus instrument panel flood-lighting on LeSabre Limited. Details like these illustrate LeSabre's continuing commitment to value.

Limited and Custom models offer different levels of trim. Whether you choose a LeSabre Custom Coupe or Sedan, a LeSabre Limited Coupe, or a LeSabre Limited Sedan, you're always sure of first-rate value. That's a Buick tradition.

If a traditional, yet contemporary, full-size car is what you want, and you're not willing to sacrifice anything in the pursuit of comfort, the 1984 Buick LeSabre is exactly the car you're looking for.



**BUICK LeSABRE
LIMITED COUPE.
IT REALLY MEASURES UP.**

Below is the LeSabre Limited Coupe. It offers room for six adult passengers and over 20 cubic feet of trunk space. Inside, the LeSabre Limited's standard equipment includes a two-way adjustable power driver's seat, additional acoustical materials for quiet, and elegant, electroluminescent lighting for

the instrument panel. With beautiful, cloth-covered 55/45 split notchback seats, the seating arrangement is elegant, too. Cut-pile carpeting continues the luxury right down to the floor.

But luxury in an automobile means little without the power to back it up. The LeSabre offers plenty in an engine lineup that includes the standard 3.8 litre V-6, plus a 5.0 litre V-8, and a 5.7 litre diesel V-8. The 3.8 litre and 5.0 litre feature a 3-speed automatic transmission as stan-

dard equipment. However, a four-speed automatic transmission with overdrive is available for all optional engines. On the highway, the overdrive ratio reduces engine speed and, of course, fuel consumption. Diesel engines are equipped with a Cold Climate Package, which features two heavy-duty batteries to assist in cold-weather starting. Comfort. Roominess. Dependability. Good looks. It isn't hard to understand LeSabre's success.



BUICK LeSABRE INTERIORS. LUXURIOUS LIVING SPACE.

There's full-size room for six in every LeSabre, and passengers will find their quarters highly inviting. Standard fare in the LeSabre Custom models is notchback seating in cloth velour with a woven fabric trimming. Limited models have individually adjustable 55/45 split notchback seats (shown left) with plush velour cloth upholstery. All LeSabre seats have full-foam construction to ensure your comfort.

LeSabre models have been appointed with many elegant standard features. There's cut-pile carpeting; a multi-function control lever for the turn signals, headlamp high/low beam, windshield wipers; and an instrument panel with the look of real wood, plus easy-to-read instrumentation.

The LeSabre's lengthy options list lets you outfit your car as you please. How about six-way power seats for the driver and the front-seat passenger? Electric front seat-back recliners are also available. Consider power windows and electric door locks. For relief from the elements, you can order Electronic Touch Climate Control air conditioning, which maintains the temperature you pre-select, rain or shine. Get Electronic Cruise Control with resume and acceleration features to make any highway drive more pleasurable. And one of the many optional radios or radio/tape combinations, including the new Delco ETR 2000 Series, will add to the effect.



1984 LeSABRE FACTS & FIGURES

Select the combination of "extras" that make your Buick uniquely yours from the long list of standard and available features, some of which are given below. Ask your dealer about group packages and the many other features not indicated below. Your dealer will also advise you of the availability of the various items on the model of your choice.

	LeSabre Custom	LeSabre Limited
Engines—3.8 litre V6	S	S
5.0 litre V8	A	A
5.7 litre V8 Diesel	A	A
Transmissions—Automatic	S	S
Overdrive Automatic	A	A
Brakes—Power Front Disc/Rear Drum	S	S
Steering—Power	S	S
Tires—205/75Rx15 Radial (White)	S	S
215/75Rx15 Radial (White)	A	A
Self-Sealing Tires	A	A
Firm Ride and Handling Suspension	A	A
Gran Touring Suspension	A	A
Limited Slip Axle	A	A
Cruise Control	A	A
Seats—Notchback	S	—
55/45 Divided	A	S
Reclining—Power Seat Back	A	A
Tilt Steering	A	A
Moldings—Rocker	S	S
Wheel Opening	S	S
Bodyside	S	S
Door Edge	A	A
Power—Seats 6-way	A	A
Door Locks	A	A
Door Locks—Automatic	A	A
Deck Release	A	A
Windows	A	A
Wheels—Deluxe Covers	S	S
Wire Covers	A	A
Chrome Wheels	A	A
Styled Aluminum	A	A
Stripes—Accent	A	A
Air Conditioning—Manual	A	A
Automatic	A	A
Rear Window Defroster	S	S
Roof—Full Vinyl	A	A
Landau—Coupe	A	A
Sunroof	A	A
Glass—Soft-Ray Tinted	A	S
Theft Deterrent System	A	A
Twilight Sentinel	A	A
Lamp Monitoring System	A	A
Tungsten Halogen Headlamps	A	A
Radio—AM	A	A
AM/FM	A	A
AM/FM Stereo	A	A
AM/FM Stereo/Cassette	A	A
4-Speaker System	A	A
Antenna—Power	A	A
Horns, Four note	A	A
Trip odometer	A	A
Clock—Dial	A	—
Digital	—	A
Visor Vanity mirror	A	A
Two-tone paint	A	A

S-Standard A-Available (extra cost) — Not Available

DIMENSIONS	COUPE		SEDAN	
	mm	in	mm	in
Wheelbase	2945	115.9	2945	115.9
Overall Length	5547	218.4	5547	218.4
Overall Width	1935	78.0	1935	78.0
Height	1443	56.0	1460	56.7
Tread, Front/Rear	1570/1542	61.8/60.7	1570/1542	61.8/60.7
Headroom, Front/Rear	986/973	38.8/38.3	1003/970	39.5/38.2
Legroom, Front/Rear	1072/973	42.2/38.3	1072/988	42.2/38.9
Shoulder Room, Front/Rear	1539/1496	60.6/58.9	1532/1549	60.3/61.0
Hiproom, Front/Rear	1398/1472	55.0/58.0	1398/1405	55.0/55.3
Usable Luggage Cap.	589 litres	20.8 cu. ft.	589 litres	20.8 cu. ft.
Cargo Volume (rear seat down)	—	—	—	—
Fuel Tank Cap.	93 litres	20.8 gal.	93 litres	20.8 gal.
Diesel	102 litres	22.4 gal.	102 litres	22.4 gal.

A word about engines

These Buicks are equipped with GM-built engines produced by various divisions and affiliates of General Motors Corporation and GM of Canada.

Order Code	Displacement	Carb. bbl.	Cyl.	†V.I.N.	*Source	Transmission
LD5	3.8 litre (231 CID)	2	V6	A	(1)	Automatic
LV2	5.0 litre (307 CID)	4	V8	Y	(2)	Overdrive Automatic
LF9	5.7 litre (350 CID)	Diesel	V8	N	(2)	Overdrive Automatic

*Produced by GM (1) Buick Division USA (2) Oldsmobile Division USA

†The V.I.N. (Vehicle Identification Number) Engine Code is the eighth entry (letter or numeral) from the left on the vehicle serial number plate. The vehicle serial number plate is located on the top portion of the driver's side of the instrument panel and can be viewed from the exterior of the car by looking through the windshield.

STANDARD FEATURES ON ALL BUICKS

SAFETY FEATURES

OCCUPANT PROTECTION • Manual lap/shoulder belts with pushbutton buckles for driver and right front passenger (driver side includes visual and audible warning system). Manual lap belt at centre position, when applicable • Manual lap belts with pushbutton buckles at rear passenger positions including centre, when applicable • Energy-absorbing steering column • Passenger-guard inside door lock handles • Safety interlocking door latches • Inertia-type folding front seat back latches • Energy-absorbing instrument panel and front seat back tops • Laminated safety glass windshield/tempered safety glass side and rear windows • Safety armrests • Front seat head restraint for driver and right front passenger (adjustable or integral) • Glove box door latch and, when applicable, console cover latch impact security • Smooth contoured door and window regulator handles • Pressure lock radiator cap.

ACCIDENT AVOIDANCE • Side marker lights and reflectors • Parking lamps that illuminate with headlamps • Four-way hazard warning flasher • Backup lights • Lane change feature in direction signal control • Windshield defrosters, washer and dual speed wipers • Vinyl-bonded inside rearview mirror glass • Outside left rearview mirror • Dual master cylinder brake system with warning light • Starter safety switch • Dual action safety hood latch • Low glare finish on instrument panel top, inside windshield mouldings, wiper arms and blades, and steering wheel metallic surfaces • Safety road wheel rims • Front disc brakes with audible wear indicators • Self-adjusting brakes • Illumination of heater and defroster controls on instrument panel • Illumination of windshield wiper and washer controls (when located on instrument panel) • Pressure relief fuel cap • Tread-wear indicators on tires.

ANTI-THEFT • Audible anti-theft ignition key reminder • Anti-theft steering column lock • Inside hood release • Anti-theft key system (one key for ignition only, second key for doors, trunk/hatch/tailgate and glove compartment) • Visible vehicle identification number.

MODEL LINEUP

LeSabre Custom—4-Door Sedan

LeSabre Limited—2-Door Coupe/4-Door Sedan

A word about assembly, components, and optional equipment in these vehicles.

The vehicles described in this brochure are assembled at various Divisions of General Motors Corporation. These vehicles incorporate thousands of different components produced by General Motors of Canada Limited and related companies and their suppliers. From time to time during the manufacturing process, it may be necessary, in order to meet public demand for particular vehicles or equipment, or to meet federally mandated emission and safety requirements or fuel economy guidelines, or for other reasons, to produce vehicles with different components or differently sourced components than initially scheduled. All such components have been approved for use in our products by General Motors of Canada Limited or related companies and will provide the quality performance associated with our name.

Please note that certain optional equipment can be ordered only in conjunction with other optional equipment.

Also, upgrading from specified standard equipment may be necessary when certain optional equipment is ordered. Ask your sales representatives for details.

With respect to extra cost optional equipment, make certain you specify the type of equipment you desire on your vehicle when ordering it from your dealer. Some options may be unavailable when your car is built. Your dealer receives advice regarding current availability of options. You may ask the dealer for this information. GM also requests the dealer to advise you if an option you ordered is unavailable. We suggest you verify that your car includes the optional equipment you ordered or, if there are changes, that they are acceptable to you.

All illustrations and specifications contained in this catalogue are based on the latest product information available at time of publication approval. The right is reserved to make changes at any time, without notice, in prices, colours, materials, equipment, specifications and models, and to discontinue models. Some of the equipment shown or described throughout this catalogue is available at extra cost. Check with your dealer for complete information.

BUICK

Wouldn't you really rather have a Buick?

Look at GM today.

A lot of new thinking has gone into GM products. New thinking aimed at completely satisfying you.

Our products are designed to slip through the wind with energy saving ease.

Optic scanners and robotics are used to build a new kind of precision.

From foundry to assembly, our people use lasers and gamma rays to monitor the building process.

At GM, we are determined that when you buy our

product, you'll be more satisfied than the buyer of any other vehicle, built by any other manufacturer anywhere in the world.

Today, we are making history in aerodynamic design, quiet rides, fuel economy and more. Leaf through this catalogue and you'll see what we mean.

At GM, our products are changing. So is our thinking. Look at GM today.



If the idea of a Buick impresses you as being a notch or two above the average automobile, it's because the people responsible for creating Buicks know that they have some high standards to maintain.

At first, it was simply a matter of excelling. Of Buick people pleasing themselves by building the very best cars they were capable of building. Cars which were luxurious, comfortable, and prestigious.

It didn't take North Americans long to discover that all the things they wanted in a car they could find in a Buick, in abundance. And so a tradition was born. A tradition of not merely meeting expectations, but surpassing them year after year.

For the past 80 years, we've been working to

advance those standards by which new Buicks are judged. Recently, that has meant employing large amounts of the latest, most advanced technology: computers, lasers, robotics, electronics. Not to replace the human factor, mind you, but to assist our people in raising Buick's standards to even higher levels.

Front-wheel drive, turbochargers, computerized multi-port fuel injection, mass-flow sensors, aerodynamics, electronics...you'll find the 1984 Buicks at the forefront of them all. We think that you'll also be pleased to discover that the traditional values of luxury, comfort, and prestige are as apparent and as important as ever. Without them, a Buick just wouldn't be a Buick.

FOR YOUR PROTECTION

New Vehicle Limited Warranty—This warranty covers any repairs needed during the basic coverage period due to defects in material or workmanship. Any required adjustments will also be made during the basic coverage period of 12 months or 20,000 kilometres, whichever comes first. The complete vehicle, except tires, is covered during this period.

Powertrain Coverage—This powertrain warranty covers gasoline engine and other powertrain components up to a total of 24 months or 40,000 kilometres, whichever comes first. This powertrain warranty also covers specific diesel engine components to 36 months or 80,000 kilometres, whichever comes first. All powertrain warranty repairs are subject to a \$100 deductible for each repair visit.

Corrosion (Rust-Through) Coverage—General Motors warrants for 1984 passenger cars, light duty trucks and vans that your General Motors dealer will repair or replace at no charge any body sheet metal panel found to have developed perforation (rust-through) due to corrosion. This warranty begins on the date the vehicle is first delivered or put in use and extends for 36 months, regardless of distance travelled by the vehicle.

Battery Coverage—If your battery should fail under normal service due to a defect in material or workmanship after the basic coverage period expires, but before the vehicle has been in use 36 months, it can be replaced on a pro rata adjustment basis for a new Delco battery. The pro rata adjustment price of the new battery will be based on the number of months the original battery was in use since the start of the new vehicle warranty. Contact a dealer handling your vehicle for further details on such adjustments.

Tires are warranted by the tire manufacturer.

Owner Assistance—The satisfaction and goodwill of owners are of primary concern to GM dealers and General Motors of Canada Limited. In the event a warranty of some other matter is not handled to your satisfaction, the following steps should be taken:

1. Discuss the problem with your dealership management.
2. Contact the General Motors Zone Office closest to you as listed in the Owner Assistance Section of your Owner's Manual.
3. Contact the Customer Service Representative, General Motors of Canada Limited, Oshawa, Ontario.

Special Policy Adjustment Program Beyond the Warranty Period—General Motors is proud of the protection afforded by its warranty coverages. In order to achieve maximum customer satisfaction, there may be times when General Motors will pay all or part of the cost of certain repairs beyond the terms of the warranty. Check with your General Motors dealer or the nearest G.M. Zone Office regarding General Motors participation in the cost of such repairs.

Continuous Protection Plan



Continuous Protection Plan—While there are many service contracts available on the market today, *there is only one which gives you an agreement*

directly with General Motors. It is the one with the Continuous Protection Plan logo shown. This logo on all Plan material assures you that the service contract you are buying is the GM Plan, the finest such program available to GM owners.

The GM Continuous Protection Plan provides optional added mechanical and electrical repair protection during and after the new vehicle limited warranties. Ask your General Motors dealer for details and information about the *genuine GM Continuous Protection Plan.*

Let's get it together GM

Buckle up!

DIESEL
WORLD LEADERS IN
DIESEL POWER.

GM 75
BUILDING ON 75 YEARS OF EXCELLENCE

Printed in Canada GM-4481

AUG 1 1 1984