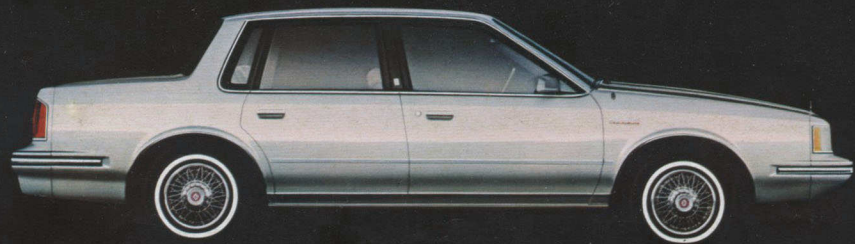


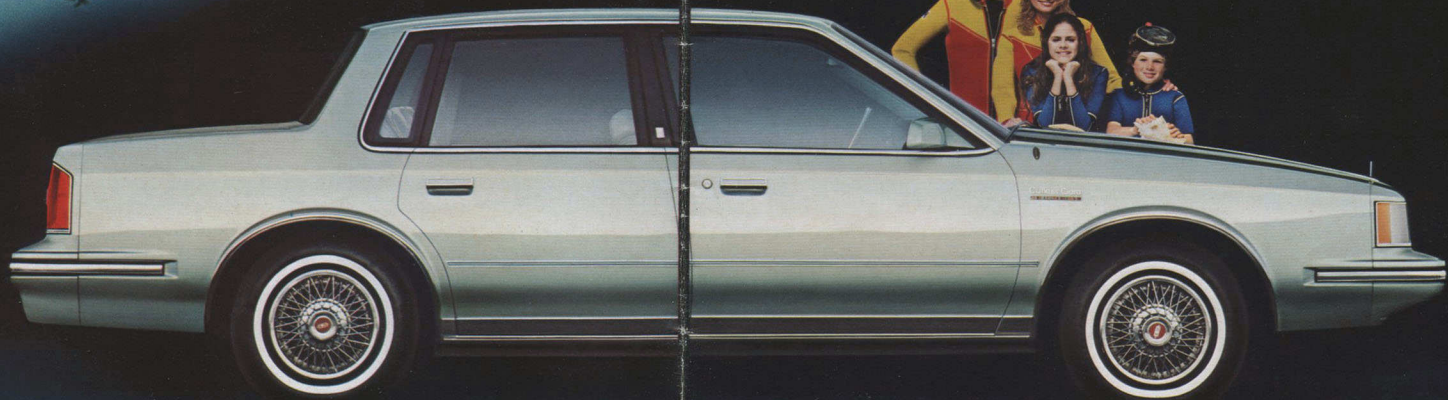
1982 OLDSMOBILE

CUTLASS CIERA · CUTLASS SUPREME · OMEGA · CUTLASS CRUISER
TORONADO · NINETY-EIGHT · DELTA 88 · CUSTOM CRUISER

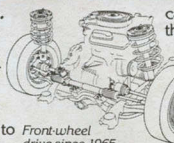


Today there's a new way of life.
And you know it. So you've made it
your way of life. Active. Spirited.
Open to adventure.

To you we present
**CUTLASS CIERA
BROUGHAM
SEDAN**



Even in these practical times... there's still room to do it with style. Times have changed. And cars have changed with the times. It had to be. Yet you can't help wondering... "In today's world of more practical cars, more space-efficient cars, isn't there still room to do it with style?"



Front-wheel drive since 1965.

cars which do exactly that. To you we present the 1982 Oldsmobiles. **We've been doing it longer than anyone. Since 1897.** And in that time we've had a lot of firsts.

The first American high-compression V8 engine. First American contemporary front-wheel-drive system and the first diesel V8 passenger cars. Building cars to meet your needs is what Oldsmobile has been doing for 85 years.



New diesel V6, diesel V8 available.

© Oldsmobile Division of General Motors Corporation

Here we go again! Introducing the 1982 Cutlass Ciera! Cutlass Supreme is America's most popular mid-size car, thanks to its styling, ride, comfort and value.

Now along comes Ciera to broaden that Cutlass appeal for more of today's drivers. It's the first front-wheel-drive

Cutlass offered in six models. A new diesel V6 can be ordered



Styled to slip through the air.

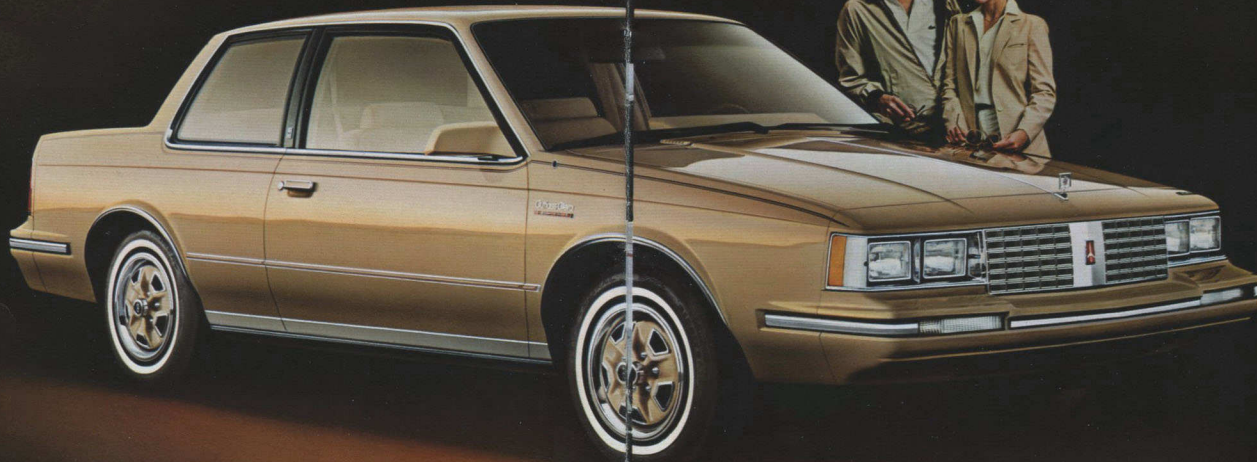
in the new Olds Cutlass Ciera! **At Oldsmobile, quality cars have always been our primary concern.**

Value is what counts. That's what buyers have always wanted and that's what we think you want today. But even in practical times like these, there's still room to do it with style. Oldsmobile style. Here's proof...



*That relaxed, confident feeling.
You know it well. The smooth ride... the
excitement that lets your spirit soar.
A great way to arrive.*

To you we present
**CUTLASS CIERA
BROUGHAM
COUPE**



Introducing Cutlass Ciera! First Cutlass with front-wheel drive! Cutlass Ciera isn't just another "car for the times." It's an impressive new car designed, engineered and built for you and your needs. Cutlass Ciera, after all, is an Oldsmobile.

And that means room and comfort. Step inside and you find a handsome, space-efficient interior. Lots of room

to stretch out and relax.

On the road, Cutlass Ciera's ride is smooth and quiet with a MacPherson strut front suspension. While you're cruising in quiet comfort, remember that the new aerodynamic Cutlass Ciera has its practical side, too.

The standard engine is a transverse-mounted 2.5-liter I4. But you can order an available 3.0-liter V6 or the new



CUTLASS CIERA LS SEDAN



CUTLASS CIERA LS COUPE



CUTLASS CIERA COUPE, SEDAN

4.3-liter diesel V6 engine.
Cutlass Ciera Brougham. The most luxurious Ciera. Both coupe and sedan feature a divided front seat with a loose-pillow look.
Cutlass Ciera LS. An elegant, yet practical coupe and sedan.
Cutlass Ciera. The lowest-priced front-wheel-drive Ciera. Coupe and sedan with Oldsmobile style!

You've got an eye for form, for elegance, for the kind of classic look that can be appreciated and valued for years.

To you we present
**CUTLASS
SUPREME
BROUGHTON
COUPE**



Cutlass Supreme. Classic styling in a total-value car. Over the past seven years, more U.S. new-car buyers chose Cutlass than any other car!

Total value is why. It's not just the beautifully aerodynamic styling of the sedans that have been turning so many heads and minds to Cutlass. It's the total value built into these cars.

The handling. The ride. The room. The quality. And, traditional resale value. Just some of the ways that let you meet the needs of the times — with style.

The Cutlass Supreme ride, for example, is impressively smooth and quiet with computer-selected coil springs at each wheel and 12 strategically located and carefully tuned body mounts.

Maneuvering in traffic is a pleasure with the trim size and power steering. Parking's a breeze, too.

Inside, the room and comfort you expect in an Oldsmobile.

Seats are full-foam and deeply padded. Interior space is impressive with generous headroom and legroom, front and rear. It's the kind of room that invites you to stretch out

and relax. Please do so.

Lift the trunk lid and you find lots of useable luggage space, too.

Cutlass Supreme value is designed and built right in — from drawing board to final inspection. Low-drag power front disc brakes, automatic transmission, electronic high-energy ignition system, headlamp-on warning, deluxe steering wheel, thick cut-pile

carpeting, deluxe wheel discs, easy-roll steel-belted tires, recessed windshield wipers and more — all standard.

Like every 1982 Oldsmobile, Cutlass Supreme receives extensive anti-corrosion measures — including galvanized metals, plastisols, waxes, sealers and zinc-rich primers throughout critical body areas. All to help keep your stylish Supreme looking stylish.

Cutlass Supreme shows its value under the hood, too. Its standard engine is a 3.8-liter V6 and a 4.3-liter V8 is available. Both engines have standard Computer Command Control with an on-board computer — to help minimize emissions and help keep the engine running smoothly. With either engine you'll be impressed with Cutlass Supreme's spirit.

You have a taste for the finer things in life. Elegance. Beauty. A little space to grow. That's for you... and yours.

To you we present
**CUTLASS
SUPREME
BROUGHAM
SEDAN**



Or, if you prefer, you can order from a choice of available diesel engines — the new 4.3-liter diesel V6 or popular 5.7-liter diesel V8. That's a diesel choice few other cars can offer.

In short, if you're getting the idea that Cutlass Supreme is designed and built to deliver a lot of value when you buy — you're getting the right idea.

And, traditionally, Cutlass Supreme

has meant good news when you decide to sell, too, with impressive resale values year after year.

With so much built-in value for the money, it's no wonder that Olds Cutlass Supreme has become so popular. This year, see your Olds dealer for a test drive. And learn what millions of Cutlass owners already know.

Buying, leasing or selling... with



CUTLASS CALAIS



CUTLASS SUPREME COUPE, SEDAN

Olds Cutlass Supreme there's still room to do it with style.

Cutlass Supreme Brougham. The ultimate in Supreme luxury — with impressive velour upholstery and deep, loose-pillow-look seats. The front seat is divided, with individual controls. Front center armrest is also standard.

Cutlass Calais. It's the Cutlass for people who really love to drive. The

sporty, grand touring coupe with reclining front bucket seats, custom sport steering wheel, dual sport mirrors, full instrumentation, a rallye suspension — and that Calais flair for the open road.

Cutlass Supreme. Classic elegance and solid practicality help make it the most popular Cutlass ever. It's a lot of value for the money.

You know the choices. But you look for that one solid investment you can be comfortable with. It's the dependable blue chip for you.

To you we present
**OMEGA
BROUGHAM
SEDAN**



Omega, with front-wheel drive. Complete with Oldsmobile quality—and room to do it with style! Great style, in fact, with a fresh, graceful new front end—and new aerodynamic look. There's a new refined look in the back, too. Very handsome.

In between, lots of room and comfort, thanks in part to the standard transverse-mounted 2.5-liter L4 engine

and front-wheel drive. A spirited 2.8-liter V6 is available.

Omega Brougham. The most luxurious Omega. Stretch out and feel the comfort of tufted, full-foam seats in rich, soft velour. Even a fold-down center armrest is standard.

Omega ES. Coupe or sedan with a look all its own. Package includes resilient front end, blacked-out moldings,



OMEGA BROUGHAM COUPE



OMEGA ES

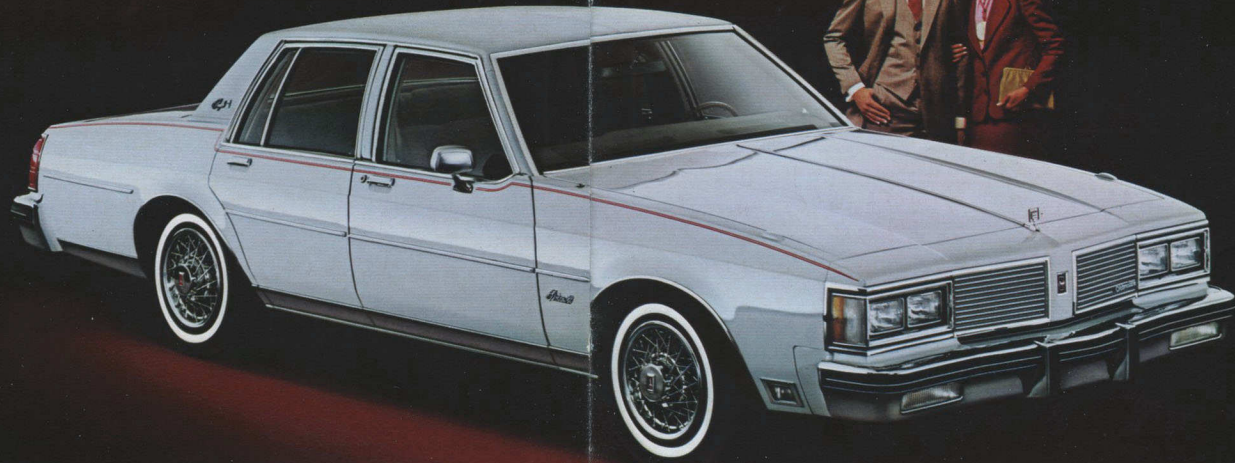


OMEGA COUPE, SEDAN

wraparound bumpers in body color, sport wheels, steel-belted radials, rallye suspension, dual sport mirrors, special brushed metal instrument panel applique, sport steering wheel, gages and more. A high-output V6 is available *only* on Omega ES models. **Omega.** Coupe and sedan, with the kind of room, comfort, ride and value you need—at a price you'll like.

When it's something important,
something of value, you expect much more
of it. Exquisite form. Impeccable detail.
A well-known, reputable name.

To you we present
**DELTA 88
ROYALE
BROUGHAM
SEDAN**



Delta 88. The family car that takes care of the family—with style. Also with room for six, a vacation-size trunk and a practical 3.8-liter V6. The popular diesel V8 is available. Result? Delta 88 is the fastest-growing car in share of sales in the full-size class.

Delta 88 Royale Brougham. Pamper your family in style. The sleek, handsome exterior is punctuated by a

sumptuous velour interior in loose-pillow-look designs.

Delta 88 Royale. These are our most popular 88s, and you can easily see why. Available in both coupe and sedan versions, there's plenty of room for a family like yours.

Delta 88. When it comes to basic family car value, this 88 really knows how to deliver—with style.



DELTA 88 ROYALE BROUGHAM COUPE



DELTA 88 ROYALE SEDAN



DELTA 88 ROYALE COUPE



DELTA 88 SEDAN

You know the guideline for sound capital investment: analyze thoroughly. The quality, performance, cost and efficiency. They all have to measure up.

To you we present
**NINETY-EIGHT
REGENCY
SEDAN**



Ninety-Eight Regency. You've earned it. A car that gives you room to do it with style. There are all manner of luxury cars on the market today. Yet you look beyond luxury. You look for solid logic to back up your selection. After all, you didn't get where you are today by making rash judgments.

Logic and luxury. In Ninety-Eight,

you get both...with room to meet today's needs - with style.
Ninety-Eight Regency Brougham. Our top-of-the-line sedan, and it certainly shows it. Plush velours shape loose-pillow-look interiors.
Ninety-Eight Regency. When you compare it with other cars for luxury, you'll understand why Regency's share of sales continues to grow.



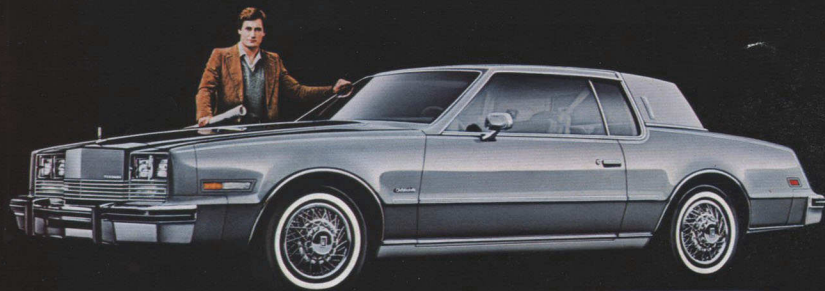
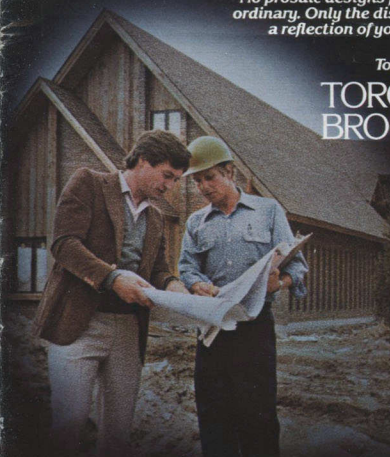
NINETY-EIGHT REGENCY BROUGHAM SEDAN



NINETY-EIGHT REGENCY COUPE

No prosaic designs for you. Nothing ordinary. Only the distinctive will do, a reflection of your individuality.

To you we present
**TORONADO
BROUGHAM**



Toronado. The personal luxury car that started America moving with front-wheel drive. It's a moving experience in more ways than one. There's that distinctive Toronado look. And those magnificently appointed Toronado interiors, spacious and relaxing. And there's that long list of Toronado standard features that anticipate most every desire. Even Cruise

Control and Tilt-Wheel Steering are included.

A 4.1-liter V6 comes standard, while a 5.0-liter V8 and a 5.7-liter diesel V8 are available. Four-speed overdrive automatic transmission is standard on all three engines.

Your style of living shows because living with style is easy when you're driving Olds Toronado.

CUSTOM CRUISER



CUTLASS CRUISER



Custom Cruiser and Cutlass Cruiser. Everyone expects room in a wagon. That's what wagons are all about. But a total-value wagon that lets you do it with style? That's what Oldsmobile wagons are all about. Comfortable room for six, a smooth ride, lots of cargo area, rich interiors and diesel availability. Plus... Oldsmobile's reputation for quality and value.

Important: A word about this brochure. We have tried to make this brochure as comprehensive and factual as possible. And we hope you find it helpful. However, since the time of printing, some of the information you'll find here may have been updated. Your dealer has details and, before ordering, ask him to bring you up-to-date.

A word about engines: Some Olds-

mobiles are equipped with engines produced by other GM divisions, subsidiaries or affiliated companies worldwide. See your dealer for details. Refer to the "Fuel Economy Estimate/Engine Supplement Sheet" provided to your dealer for engine source and EPA mileage estimates.

About models illustrated: Some equipment shown may be available only at extra cost, and only on specific models.

GM

Printed in U.S.A. 9-81