

1982

Buick

Skyhawk.



Everything fits beautifully.



Including you.



**Important:**

**A Word About This Catalog.**

We have tried to make this catalog as comprehensive and factual as possible and we hope you find it helpful. However, since the time of printing, some of the

information you will find here may have been updated. Also, some of the equipment shown or described throughout this catalog is available at extra cost. Your dealer has details and, before ordering, you should ask

him to bring you up to date.

The right is reserved to make changes at any time, without notice, in prices, colors, materials, equipment, specifications and models. Check with your Buick dealer for complete information.

**The 1982 Skyhawk.**

It's everything you expect a Buick to be. Only smaller. Consider what it's like to discover an old friend all over again. Or to come home to a brand-new house. And you will begin to understand the all-new Skyhawk. It's

inner familiarity wrapped in a modern package.

It's a car that deftly combines the quality, reliability and luxury you would expect in a car with a Buick name. With up-to-date requisites for front-wheel drive, an efficient size

and aerodynamic design.

So everything fits beautifully. Including you and four more passengers.

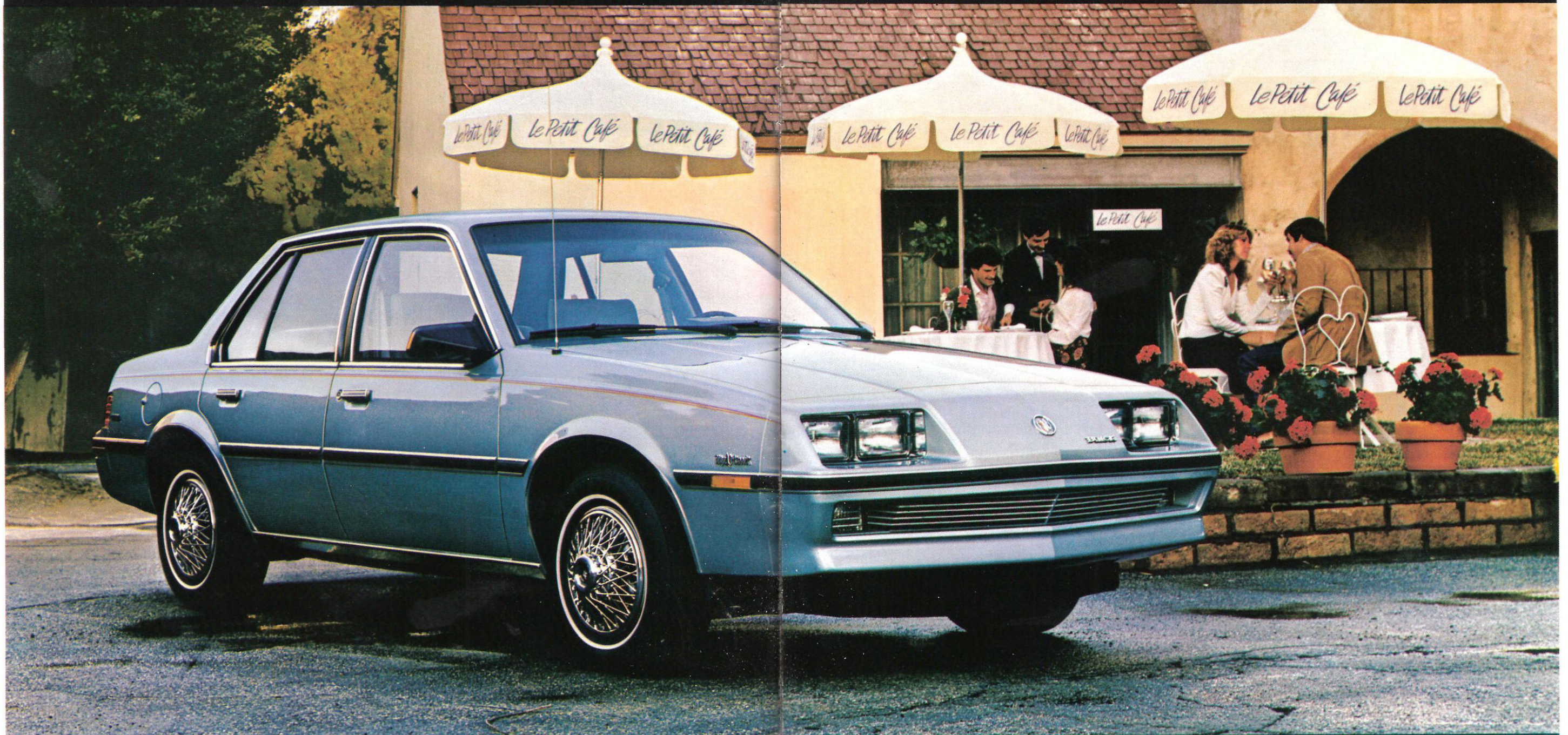
Still have your doubts that this little pride-and-joy is, in fact, a Buick? Then take the true test. Move inside. Like Buicks past, present

and foreseen, this car is absolutely, irrevocably, downright posh. Making you comfortable is one of Skyhawk's specialties.

Shown above is the Skyhawk Limited interior. (Some of the equipment shown is available at extra cost.)

The new smaller Buick.

Skyhawk.



**Skyhawk Limited Sedan**  
Small cars have been called a trunk-load of titles. From econo-boxes to homely, sensible and practical. But only one—the 1982 Skyhawk—deserves to be called Buick.

The reasons are immediately obvious and, yet,

at the same time, somewhat deeply concealed.

On the surface, a Skyhawk casts a sleek, stylish profile. Its contemporary aerodynamic wedge shape, emphasizing a low hood and high rear deck, actually helps reduce drag.

But what really sets the Skyhawk apart? For starters, just look at that face.

The beauty of Skyhawk's distinguished unified front-end and grille makes it indelibly Buick. So does careful attention to exterior detail. From the integrated headlamp

system to the wraparound tail lamps, down to the set of standard deluxe wheel covers, bearing the Buick Tri-Shield emblem. (Available wire wheel covers shown above.)

Meanwhile, underneath the sheet metal, Skyhawk reveals a technologically up-to-date engineering foundation, resulting in something else unmistakably Buick. A smooth ride.

Such a pleasantly surprising, distinctly polished outcome is achieved by a

team of compatible engineering features. Including MacPherson strut independent front suspension. Semi-independent crank arm design rear suspension. Rack-and-pinion steering. Pliacell® rear shocks. All standard. (See pages 10-11 for details.)

At the heart of every Skyhawk is a standard transverse-mounted 1.8 liter four-cylinder engine, created expressly for front-wheel-drive Skyhawk-sized cars. It teams with a standard four-speed overdrive manual transmission or

available automatic. A 1.8 liter four-cylinder overhead cam engine with Electronic Fuel Injection and a 2.0 liter four-cylinder powerplant are both available after April, 1982. The 2.0 liter engine is not available in California.

The very best thing a small car can be.

A Buick.



#### Skyhawk Limited Coupe

When a small car is efficient, precisely built, well-equipped, handsome and actually comfortable—even luxurious... we call it a Buick.

In 1982, Skyhawk offers you multiple choices: between two-door sportiness or four-door practicality...

between well-equipped base or even more luxurious top-of-the-line models. Skyhawk Custom Coupe or Sedan... Skyhawk Limited Coupe or Sedan. Which one will it be?

All specialize in luxurious Buick interiors.

For instance, richly woven cloth or handsome

vinyl interior trims are available in Skyhawk Custom, while soft knit velour is the standard trim in Skyhawk Limited.

All feature cut-pile carpeting underneath deeply-contoured, form-fitted seats. With individual reclining front buckets and adjustable headrests.

For easy rear-seat access, the front passenger seat tips forward and moves all the way up in Coupes. The Coupes, incidentally, come fitted with swing-out rear quarter windows.

In Sedans, rear windows roll down. And Sedans have a slender advantage in trunk space; 13.5 cubic feet compared to 12.6 cubic feet in Coupes.

This new smaller Buick is well-endowed with standard comfort and convenience items—from side-window front defoggers to roof-

mounted assist handles to a Delco 2000 Series AM radio and dual front speakers (a delete radio option is available).

Limited models are stocked with even more, including a standard acoustic insulation package, front-seat armrest, gages, trip odometer and custom

steering wheel.

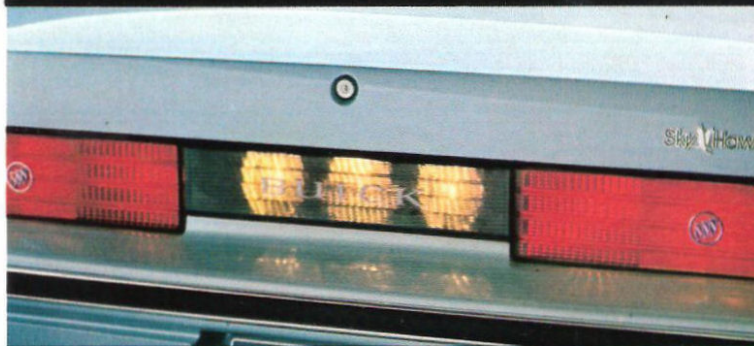
But if you'd like to make your Skyhawk even more elegant, be sure to take advantage of the full complement of available options. To mention a few: ETR radios, six-way power driver's seat, remote trunk release, flip-open, removable glass sunroof

and styled aluminum wheels (shown above).

Chances are, there's a Skyhawk to answer your Buick driving needs, tastes, desires and whims, whatever they might be.

All in all, the 1982 Skyhawk is the very best a small car can be. A Buick.

1982



**Backup Lights**

A black panel joining the wraparound tail lamps stylishly conceals the backup lights. The Buick

name completes the functional design, which adds a sleek, sporty distinction to Skyhawk's rear silhouette.



**Remote-control Mirrors**

The control is conveniently located on the driver's door or the instrument panel. Extra cost.

**Swing-out Rear-quarter Windows**

Windows lock for security. Standard on all Skyhawk Coupes.

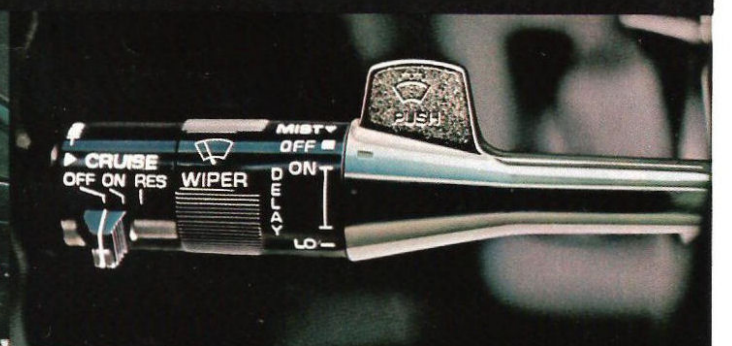
Skyhawk Features



**Vista-Vent Sunroof**

Now you can have the sun, moon and stars shining in and providing another dimension to your Skyhawk

driving experience. The tinted glass sunroof can be lifted out, if desired, and stored in Skyhawk's trunk. Extra cost.



**Multi-function Control Lever**

Little things count a lot in smaller cars. For example, controls for headlamp high/low beams, turn sig-

nal, windshield wiper and washer are all contained on one lever. It's conveniently located on the steering column.



**Skyhawk Custom Interior**

Even in standard custom form, Skyhawk Custom's interior says Buick all the way. From the deeply-

contoured, body hugging seats, trimmed in your choice of cloth or vinyl. To the cloth-covered doors (when cloth seats are

ordered) and cut-pile carpeting. Everything fits beautifully. Including you. With other comfort and convenience features,

ranging from a full array of lights to front side window defogger outlets. Some of the equipment shown is available at extra cost.



**Instrument Panel**

Buick's human engineering is evidenced in this smartly-designed instru-

ment panel. It groups gauges within easy sight and is equipped with rocker switches and thumbwheel

rheostats. A radio, cigarette lighter and covered coin holder are centrally located within easy reach.

As is the lockable glove box. All standard. Some of the other equipment shown is available at extra cost.



**Delco ETR Radio**

Sensitive electronic circuitry, activated by push buttons or electronic scanning, helps provide

precise reception. For your convenience, an easy-to-read digital clock is located in the radio's dial face. Extra cost.



**Easy-entry Passenger Seat**

Tilt down the front passenger seatback and the entire unit moves for-

ward. The action enables rear-seat passengers to enter and exit with ease. Standard on all Skyhawk Coupes.

**Front-wheel drive**

All Skyhawks are front-wheel drive, meaning the wheels that steer also drive. So the car is pulled by the front wheels, rather than pushed by the rear wheels. And that leads to several benefits.

First, the concentration of engine weight over the driving wheels results in added traction. It's especially impressive through mud, snow and ice.

Secondly, the front-wheel drive design configuration is space efficient. For example, the transverse-mounted engine permits a compact engine compartment. And the traditional driveshaft floor hump is significantly reduced.

All of which means, there is more room for passengers and gear. To be specific, there's room for five in every Skyhawk. Plus 12.6 cubic feet of trunk space in Coupes; 13.5 cubic feet in Sedans.

**MacPherson strut independent front suspension**  
MacPherson strut design is especially well-suited to front-

wheel-drive design cars. It's compact, and permits mounting of a transverse engine between the front wheels. It also eliminates upper control arms and contributes to space efficiency.

In simplest terms, MacPherson strut allows a large coil spring to absorb bumps at each front wheel contributing to Skyhawk's well isolated ride.

**Semi-independent trailing crank-arm rear suspension**

Don't let the long name fool you. It only takes three words to explain the effect: smooth Buick ride. Which is a Buick hallmark.

This sophisticated system places the rear axle between the bushing and rear wheels, so the axle is free to twist, as the wheels roll over bumps.

Pliacell® rear shock absorbers are included in the rear suspension system to cushion the ride all the more. These shocks are used on all 1982 Buicks.

**Gas Hood Strut**

A gas-operated strut is attached on the center of the Skyhawk Limited hood to help hold it open. The gas strut, the same type of strut used on the luxurious Riviera and Century models, makes opening and closing the hood much easier than conventional springs or torsion bars.

**Rack-and-pinion steering**

For precise and crisp handling Skyhawk's standard manual steering system attaches the rack to the MacPherson strut front suspension. Power steering is available on all Skyhawks.

**Aerodynamics**

The more aerodynamic a car is, the easier it travels through air. And the less fuel it burns.

One look at Skyhawk's contemporary "wedge shape" and it's clear to see. Aerodynamics played a prime role in its design. The low sloping hood cleaves the air. While the upswept rear deck really sends the wind sailing.

**Front disc, rear drum brakes**

Discs in front. Drums in the rear. Skyhawk's proven braking system generates balanced braking action. Power assist is standard.

**About quality**

Quality is a top priority. It's engineered in Skyhawk's design. It's designed in Skyhawk's manufacture. From parts and component specifications to new automated, computer-controlled assembly and inspection equipment, every Skyhawk must meet high quality requirements. The use of robots, in addition to other exotic technology such as laser scanners and gamma ray inspection devices, is a vital part of making Skyhawk fit beautifully.

For instance, to achieve consistently high levels of precision, robots are used to make an average of 450 spot welds during every Skyhawk's early assembly

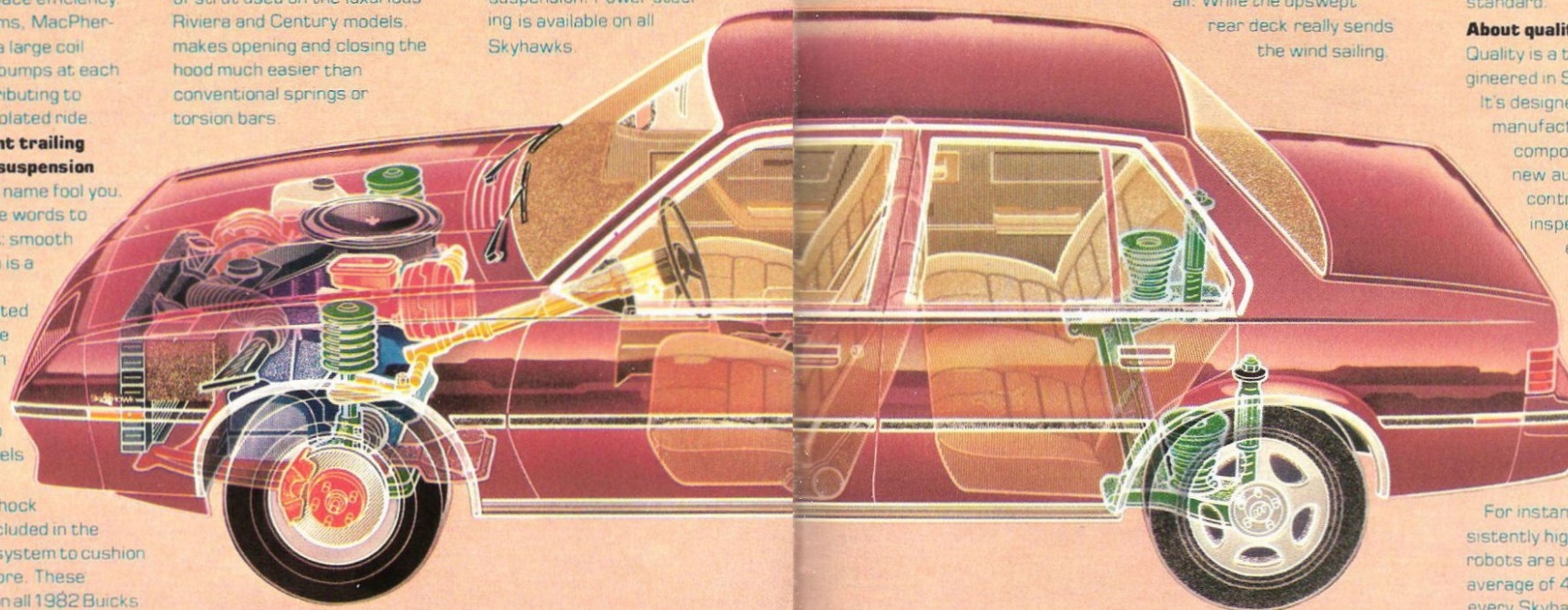
stages. Other robots—equipped with the first laser scanners in a U.S. body assembly plant—shoot each vehicle body with beams to determine, with absolute accuracy, dimensions of openings, including windshields, trunk lids, tail lamps, doors and windows.

For precise control over door opening areas, Skyhawk's are constructed from a single door frame stamping.

And to keep your Skyhawk looking new, a healthy dose of tough, rust-protective, chip-resistant Plastisol covers critical areas.

The results are readily apparent in Skyhawk's excellent fit and finish, from the tight, uniform fits between metal panels to the smooth and sparkling painted finishes.

Added together, these proven engineering and advanced design features make the 1982 Skyhawk state-of-the-art. They combine to provide a smooth Buick ride that could very well change the way you drive.



**Dimensions**

(Inches unless otherwise noted)

Overall:	Coupes	Sedans
Length	175.3	175.3
Width	62.0	62.0
Height	54.0	54.0
Wheelbase	101.2	101.2
Front Tread	55.4	55.4
Rear Tread	55.2	55.2
<b>Interior Front</b>		
Leg Room	42.1	42.2
Head Room	37.7	38.5
Shoulder Room	53.7	53.7
Hip Room	52.8	48.9
<b>Interior Rear</b>		
Leg Room	31.2	34.3
Head Room	36.5	37.8
Shoulder Room	52.5	53.7
Hip Room	49.8	48.9
<b>Trunk Capacity</b>		
Cubic Feet	12.6	13.5
<b>Fuel Tank Capacity</b>		
Gallons	14.0	14.0

**Skyhawk Custom/Skyhawk Limited Powerteams**

Engine Description	49 States or California	4-speed Manual Transmission (standard)	Automatic Transmission (available)	5-speed Manual Transmission (available 6/82)
1.8 liter (112CID) 2-bbl. L-4 (L46) Standard	49 States & California	Standard	Available	
1.8 liter (112CID) EFI L-4 (LHB) Available (4/82)	49 States & California		Available	Available
2.0 liter (121CID) 2-bbl. L-4 (LR9) Available (4/82)	49 States		Available	

(L46) (LR9) Produced by GM-Chevrolet (LHB) Produced by GM Brazil  
Refer to the EPA mileage estimates and engine supplement chart included with this catalog.

**A Word About Engines.**

Some Buicks are equipped with engines produced by other GM divisions, subsidiaries or affiliated companies worldwide. See your dealer for details or please refer to the Buick powerteam engine chart.

**Standard 1.8 liter engine**

Standard, yes. But very sophisticated. This engine has been designed from the ground up. It's specifically sized for cars like Skyhawk to provide performance and fuel economy.

This proven powerplant peaks at 88 horsepower.

One secret to its free-revving nature is the cross-flow cylinder head design. Like Indy 500 engines, it contains the inlet on one side, the exhaust on the other.

In addition to a fast burn combustion chamber and a high speed, camshaft-in-block valve train, the 1.8 liter engine features General Motors high technology Computer Command Control module. The on-board computer system makes precise spark timing possible to help avoid ping or detonation. And by instructing the car's carburetor to send the correct fuel/air mixture to the engine, it controls emissions.

**Available 2.0 liter engine**

Driving enthusiasts, this could

be the engine for you.

Skyhawk's available 2.0 liter camshaft-in-block design powerplant is similar to its standard 1.8 liter, with about 1/4 inch increase in stroke. The additional horsepower, plus a 10% increase in torque, result in a pleasingly, more spirited performance. The engine develops 90 horsepower at 5100 rpm. Or 110 lb. ft. of torque at 3600 rpm. Available after April, 1982 except in California.

**Available 1.8 liter OHC/EFI engine**

For impressive performance, the new Skyhawk offers (after April, 1982) an available 1.8 liter overhead cam engine with Electronic Fuel Injection.

It's a hybrid 1.8 liter 4-cylinder design featuring world class technology.

For instance, the overhead cam design permits precise valve control and high rpm operation.

The OHC/EFI engine also has a cross-flow cylinder head, fast-burn combustion chamber and centrally-located spark plug for high efficiency. It uses an aluminum cylinder head, aluminum intake manifold, along with many other parts. So weight savings are significant.

Another factor contributing to economy: Electronic Fuel Injection. It replaces the conventional carburetor system. Instead, fuel metering is controlled by an electronic module. This module reads manifold vacuum, engine temperature and engine speed. And then determines the precise amount of fuel to deliver to the engine.

**Available 5-speed manual transmission**

Something soon to come. Skyhawk's optional 5-speed manual transmission. Availability is slated for June.

And it will be available exclusively with the high-revving available 1.8 liter OHC/EFI engine. The combination is designed to be a pure driving delight, producing a performance-level 3.83 final drive ratio. This rather

exotic engine/drivetrain team also promises performance during low speed acceleration.

**Standard 4-speed overdrive manual transmission**

Talk about spirited. This is a unit boasting ratios specially chosen to provide lively acceleration. And fourth gear is, in essence, overdrive. This gearing allows the engine to run at a more leisurely pace at highway speeds. And lower engine speeds aid fuel economy on the highway.

**Available 3-speed automatic transmission**

Of course, you can order Skyhawk with an automatic. It's available with any Skyhawk engine.

The automatic transmission uses a three-element hydraulic torque converter, with a 3.18 final drive ratio to efficiently transmit engine speed to road speed. Plus it's equipped with a kickdown feature for passing.

And for smooth response, the transmission has been closely matched to engine output.

# 1982

# Buick

# Skyhawk.

## Standard Equipment Engine/Chassis

- 1.8 liter L-4 (112 CID) engine
  - 4-speed overdrive manual transmission—floor-mounted shift
  - Operating console
  - Front-wheel drive
  - Computer Command Control
  - High-Energy Ignition
  - Delco Freedom II Battery (maintenance-free)
  - Manual rack-and-pinion steering
  - Low-drag power brakes with front disc/rear drum
  - Fiberglass-belted, radial-ply blackwall tires—P175/BDR13
  - Extensive anti-corrosion measures
  - Voltmeter, oil pressure and temperature gages and trip odometer (Skyhawk Limited)
  - Performance axle ratio
- ## Comfort and Convenience
- Choice of cloth or vinyl bucket seats (Skyhawk Custom)
  - Limited level cloth bucket seats (Skyhawk Limited)
  - Front seat armrest (Skyhawk Limited)
  - Driver and passenger front seatback recliners
  - Adjustable front seat headrests
  - Easy-entry front passenger seat (Coupes)
  - Front, side-window defogger outlets
  - Fixed-mast antenna

- Fluidic windshield washer system
- Delco push-button 2000 Series AM radio (a delete radio option available)
- Dual front speakers
- Lights: door-operated dome, under-dash courtesy, ashtray, glove box, trunk and engine compartment
- Rear doorjamb switch (Sedans)
- Covered coin holder in instrument panel
- Gas-assist hood strut (Skyhawk Limited)

## Appearance and Protection

- Wraparound protective moldings
- Wheel opening moldings
- Plastisol paint protection
- Deluxe wheel covers
- Styled, black, outside, rearview mirror—left-hand manual
- Color-coordinated seat and shoulder belts

## Occupant Protection

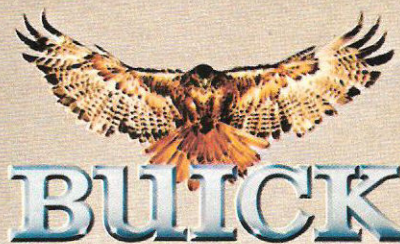
- Manual lap/shoulder belts with pushbutton buckles for driver and right front

- passenger (driver side includes visual and audible warning system).
- Manual lap belts with pushbutton buckles for rear passenger positions.
- Energy-absorbing steering column.
- Passenger-guard door locks.
- Safety door latches and stamped steel hinges.
- Folding seatback latches.
- Energy-absorbing instrument panel and front-seatback tops.
- Laminated windshield, tempered side and rear glass.
- Safety armrests.
- Identification symbols for controls and displays.
- Glove box door latch.
- Smooth contoured door-and-window-regulator handles.
- Automatic-locking rear, outboard, seat belt retractors.
- Pressure lock radiator cap.

## Accident Avoidance

- Side marker lights and reflectors.

- Parking lamps that illuminate with headlamps.
  - Four-way hazard warning flasher.
  - Backup lights.
  - Lane-change feature in direction signal control.
  - Windshield defrosters, washer and dual-speed wipers.
  - Vinyl-edged inside mirror.
  - Outside, rearview mirror.
  - Dual master cylinder brake system with warning lights.
  - Starter safety switch.
  - Dual-action safety hood latches.
  - Low-glare finish on instrument panel top, inside windshield moldings, wiper arms and blades, and steering wheel metallic surfaces.
  - Safety wheel rims.
  - Front disc brakes with audible wear indicators.
  - Self-adjusting brakes.
  - Illumination of heater and defroster controls on instrument panel.
  - Pressure-relief gas cap.
- ## Anti-Theft
- Audible anti-theft ignition key reminder.
  - Anti-theft steering column lock.
  - Inside hood release.
  - Anti-theft key system (one key for ignition only, second key for doors, trunk, and glove compartment).
  - Visible-vehicle identification number.



## A Word About Assembly, Components and Optional Equipment in These Buick Products

The Buicks described in this catalog are assembled at facilities of General Motors Corporation operated by GM Assembly Division. These vehicles incorporate thousands of different components produced by various divisions of General Motors and by various suppliers to General Motors. From time to time during the manufacturing process, it may be necessary, in order to meet public demand for

particular vehicles or equipment, or to meet federally mandated emissions, safety and fuel economy requirements, or for other reasons, to produce Buick products with differently sourced components than initially scheduled. All such components have been approved for use in Buick products and will provide the quality performance associated with the Buick name.

With respect to extra cost optional equipment, make certain you specify the type of equipment you desire on your vehicle when ordering it

from your dealer.

Some options may be unavailable when your car is built. Your dealer receives advice regarding current availability of options. You may ask the dealer for this information. GM also requests the dealer to advise you if an option you ordered is unavailable. We suggest that you verify that your car includes the optional equipment you ordered or if there are changes, that they are acceptable to you.

## Buy or lease a Buick

Many Buick dealers offer you the opportunity to buy or

lease a Buick. Ask about their leasing arrangement. It may be right for you.

## The GM Continuous Protection Plan

It offers service protection in addition to that provided by GM's new-vehicle limited warranty. Coverage is available only in U.S.A. and Canada for the 1982 model year. Ask your Buick dealer about it.

