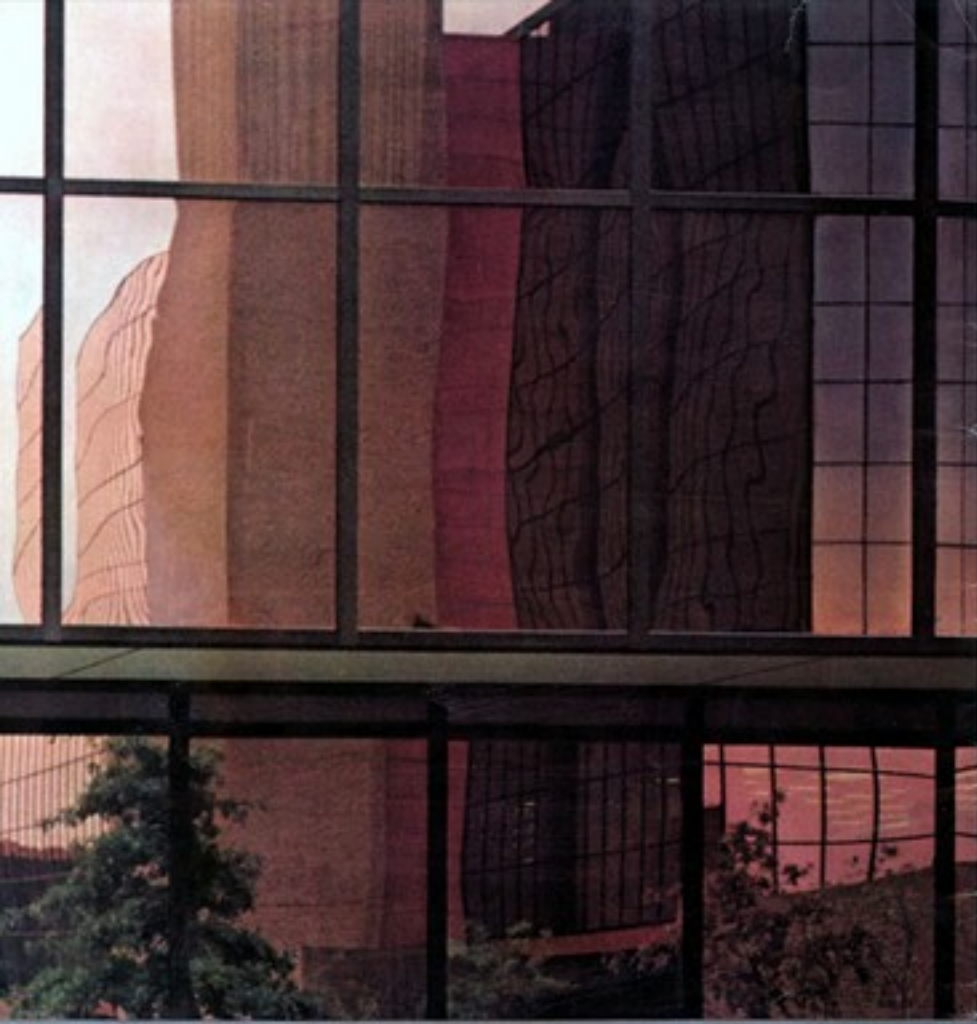


BUICK '81





A Word About This Catalog

We have tried to make this catalog as comprehensive and factual as possible and we hope you find it helpful. However, since the format printing, some of the information you will find here may have

been updated. Also, some of the equipment shown or described throughout this catalog is available at extra cost. Your dealer has details and, before ordering, you should ask him to bring you up to date.

The right is reserved to make changes at any time, without notice, in prices, colors, materials, equipment, specifications and models. Check with your Buick dealer for complete information.



Classic design, whether traditional or contemporary, whether in buildings or bridges, has an inherent tightness about it. It's an enduring quality that stems both from form and the ingenious use of materials. In short, it brings beauty to function. We submit that, in the automotive world, our 1983 Buicks possess these very same elements. We think, as you become better acquainted with them on the following pages, you'll agree.

Riviera

The accolade, "leading edge of Detroit technology," is not given lightly to production cars. Happily, some renowned automotive experts have seen fit to so honor a car with the Buick nameplate.

The Riviera. This accolade has not gone unnoticed in the marketplace. Many people, who could afford almost any car, now drive Rivieras. And we're pleased. It's that kind of car.

It is a classic design, in the best sense of the word. It makes use of interesting weight-saving materials and engineering approaches, they are combined in a way that's synergistic, the sum becomes greater than its parts.

As you might expect, we have brought refinements to the 1981 Riviera. Its grille and gray bumper protective strips distinguish a 1981 Riviera from its predecessors. It will ride on new, low-rolling-resistance radial tires, standard except on T Type, which has GFT-15 tires. And, new self-sealing tires will be available except on the T Type. They, too, are of low-rolling-resistance design.

Riviera's basic strength contrast. Its front-wheel drive gives impressive traction in foul weather or fat, and the four-wheel independent suspension gives a smooth, luxury ride.

There are many detail improvements, but one that bears mentioning is the new windshield washer system that we call "Buick." It has no moving parts, and sprays droplets of washer fluid in a fan pattern on the windshield.

But it is the balance of design, the careful use of special materials, and creative execution that makes Riviera the success that it is. "Leading edge." An accolade that must be earned and re-earned. As in the 1981 Riviera.



Riviera T TYPE

Now, please, that we now refer to this sportier Riviera as the T TYPE. It's the worthy successor to the S TYPE. Its new grille, familiar amber turn signals, sporty black accents and black side mirrors only hint at what's new underneath.

What's there is aptly named *Gran Touring*, the key to the re-named Riviera T TYPE. *Gran Touring* refers to the suspension and the thinking that went into it. The object was to endow the T TYPE with ride and handling characteristics worthy of the new name, T TYPE. So, engineers rethought the T TYPE's underpinnings right down to its wheels and tires. The results are, we modestly submit, remarkable. The *Gran Touring* suspension gives quicker steering feel and increased road feedback compared to Riviera. Ride is superbly controlled, without the harshness and tarmp jiggles that often accompany "sporty" suspensions. To be sure, the *Gran Touring* suspension rides more firmly than the regular Riviera suspension, it's a reassuring firmness. Combined with Riviera's already sophisticated, fully independent suspension, we think you'll agree that the *Gran Touring* concept has been well executed.

Riviera T TYPE continues to offer the 3.8 liter turbocharged V-6 standard, the engine that reintroduced turbocharging to American production cars (not available in California).

You can, if you desire, choose a 4.1 liter V-6 (the Riviera's standard engine), or a 5.0 liter gasoline V-8 from the available list. (The Riviera also offers, for the first time, an available diesel V-6.)

The Riviera T TYPE is more than cosmetics. It goes beyond basic engineering specifications to capture a feeling, a mood. And in so doing, it just might redefine the meaning of road machines.





Riviera

The refinements continue. For example, a new 45/45 seating arrangement in the front features a convenient fold-down center armrest on the driver's side. In the T Type, comfortable cloth bucket seats and a storage console are standard. If you order the available electric, outside, rearview mirrors, you'll find that they both are now controlled by a single lever.

Scan the instrument panel. In the T Type, it's now a handsome simulated woodgrain. Should you select the available Trip Monitor, you'll have the most sophisticated trip/mileage/elapsed time/engine condition system available in a Buick.

Perhaps, your musical enjoyment demands outstanding equipment. The Riviera fulfills with a new, available Concert Sound six-speaker system that can be combined with the available Delco Full feature or DR radios. There are other Extended Range speakers available for Riviera, but this one bears special listening.

If you are contemplating a Riviera, please understand that a considerable amount of equipment is already standard: automatic transmission, six-way power seat for the driver, digital quartz-controlled clock, air conditioning, electric door locks, a Delco AM/FM stereo radio (which may be deleted for credit), and power antenna.

It remains your choice: Riviera or Riviera T Type, full cloth or available leather inserts in seats and seatbacks, and the special equipment. And, we couldn't think of a more pleasant dilemma.

- ▲ Riviera instrument panel. Some equipment available at extra cost.
- Power door locks, windows, six-way power seat, all standard.
- ◆ Power mirrors available. ◆ Available landau top. ◆ Two-speed windshield wipers with delay, Twilight Sentinel, both available.
- Available electric control mirrors.
- T Type storage console. ◆ Available self-sealing tires supplied by various manufacturers. ◆ Available 5.7 liter diesel V8. ◆ Available Cruise Master speed control with resume-speed feature. ◆ Available electric fuel cap lock.

Riviera	ALL AS	CLASH (1)	ALL AS	CLASH (2)
Instrument				
Power	S	A		
Riviera T Type			S	A
S = standard	A = available			



Electra

You may be among the many people to whom the name Buick Electra symbolizes one of the highest embodiments of automotive luxury. You could pick from any number of competing nameplates, but you keep coming back to Buick Electra.

And for good reason. Electra represents, to many, a luxury car that rewards their personal achievements.

For example, our 1981 Electra Park Avenue continues the process of thoughtful luxury car development. A new grille blends with the downward sloping hood, setting off Park Avenue's brushed-brush, body-side molding.

A generously padded halo top, that reveals a more sliver of body color above the windows, is standard. Four newly styled available aluminum wheels, in addition to their outstanding looks, save nearly 13 pounds per car compared to the standard wheels.

In every Electra Coupe and Sedan, the standard 4.1 liter V-6 has been teamed with a new automatic transmission with over-drive. The new fourth gear engages automatically around 45 mph, and reduces engine speed by one-third, permitting added efficiency in the important highway cruising speed range. This remarkable transmission is standard with the available 5.0 liter V-6, as well. You may even select a 5.7 liter diesel V-6 and conventional automatic. Even the brakes receive high-technology "low-drag" design improvements.

Instricks are often correct. Your Instricks, for example, guide you to the 1981 Buick Electra. And for good reason. It embodies many qualities in its devotion to luxury. It is a car that reflects your own century in life, your personal success. And the lifestyle you have chosen.



Electra Park Avenue Sedan

Electra

This may be your very first Electra. Or it may be your most recent. In any case, we welcome you to the serene 1981 Electra environment. The Electra Limited offers a choice of Coupe or Sedan, each with new color-coordinated, protective, body-side moldings, standard.

In addition to its standard, low-rolling-resistance white sidewall tires, new self-sealing tires are available. Electric, remote-control, outside, rearview mirrors, also available, can be adjusted by a single control thoughtfully located on the driver's armrest. And electroluminescent coach lamps, a hallmark of the Electra Park Avenue, are now available to the Electra Limited buyer.

Whether this is your first Electra or your latest, we think you'll find that virtually no area of your comfort and convenience has been overlooked.



Electra Limited Sedan



Electra

An Electra interior, with its new fabrics and all-new seat patterns, gives you an initial luxury impression. Add the sense of touch and you understand something of what some call the Electra mystique. And if you select available leather inserts in the seats and seatbacks, separated by the armrests, the sumptuous feeling is reinforced even more.

Seated, your eyes regard the instrument panel, with black background dials and, the standard quartz-crystal-controlled digital clock.

On the road, try the available Cruise-Master speed control with its new resume-speed feature. That's real Electra convenience.

And be sure to drive an Electra with the available six-speaker Delco Concert Sound system, pioneered on last year's Electra Park Avenue Sedan. Now it can be ordered with either the available Full feature or ES trim, in all Electra Coupes and Sedans. You'll hardly believe your ears.

You can order available Electronic Touch Climate Control air conditioning, a system that represents the use of electronics in a high form.

There is, of course, much more. But, then, that's what you expect. After all, this is a Buick. A Buick Electra.

- Park Avenue instrument panel. Some equipment available at extra cost. • Two-speed windshield wiper with delay. Twilight Sentinel, both available. • Tungsten-halogen, high beam headlamps, cornering lights, both available. • Power windows, six-way seat, mirror control, door locks, all available. • Cruise-Master speed control with resume speed feature, available. • Automatic transmission with overdrive. • Electronic Touch Climate Control air conditioner. Full Feature AM/FM Stereo radio and Concert Sound speaker system, available. • Rear-seat air tray and lighter. • Available 5.7 liter diesel V6. • Available electrically controlled outside mirror.

Electra trim level	ES (V6)	ES (V6) Leather	ES (V6) Leather II	ES (V6) Leather III	ES (V6) Leather III
Limited Coupe	A	S			
Limited Sedan	A	S			
Park Avenue Coupe	S				A
Park Avenue Sedan	S				A

S=standard A=available

LeSabre

Now we come to a back that has become synonymous with room, the sense of above-average comfort, and yes, luxury. LeSabre.

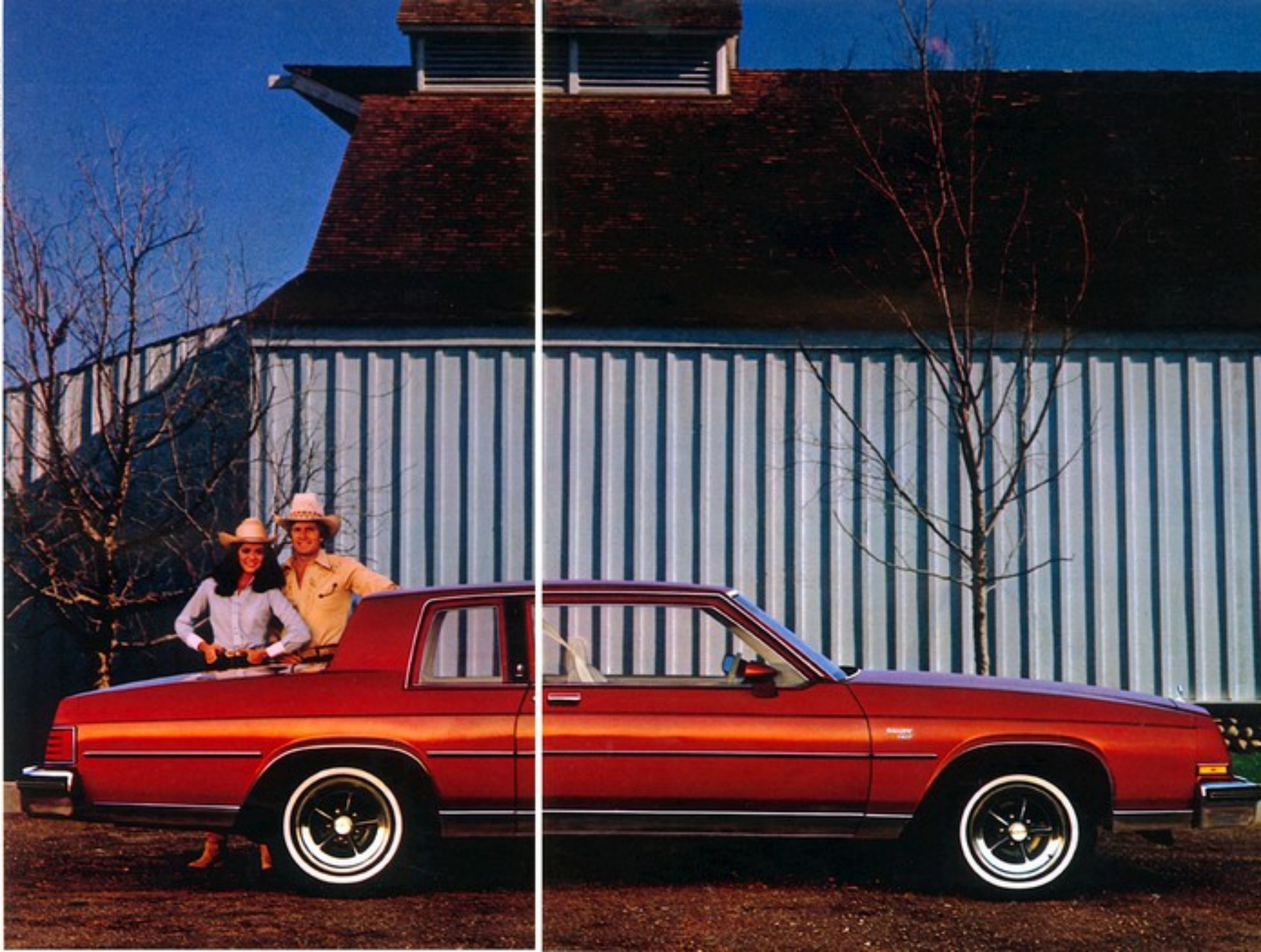
Just what is it that so many find of particular value in LeSabre? It's just that value. Plentiful and simply, full six-passenger room. Thickly cushioned seats. A roomy trunk. The comfort of a long wheelbase and all-steel spring suspension. All of this, and more, comes at a price that outweighs its asking price. That's value.

For example, the 1981 LeSabre Coupe sports a new option package we call "T TYP," and it clearly reveals our interiors. Inside, enjoy bucket seats, operating console, sport steering wheel and custom seat belts. Outside, sport mirrors and a black accented pillar. Underneath, the new Gran Touring suspension reflects Buick's new philosophy, a test machine worthy of the new designation, "T TYP."

Every powerplant offered in LeSabre Coupes and Sedans will be offered with the T TYP Coupe option.

Standard: 3.8 liter V6 with automatic transmission. If you pick the available 4.1 liter V6, or the 5.0 liter V8, you get the new automatic transmission with overdrive, as well. A diesel V6 is available with conventional automatic transmission.

Sedans, coupes, or T TYP, you'll find much more to like about 1981 LeSabres. All of it adds up to impressive value.



LeSabre TYP Coupe Option

LeSabre

Let's face it, we gave LeSabre a reshaping. This year, we concentrated on details. Such as the refined, rectangular grille shown here on the LeSabre Limited. And on this LeSabre, or its Coupe counterpart, the color-coordinated, protective, body-side molding you see is standard.

For more dress-up, order four available new styled aluminum wheels with handsome exposed chrome lug nuts. Not only are they sporty, they save more than 13 pounds when compared to standard wheels.

All LeSabres can be ordered with an available illuminated entry system, a genuine nighttime convenience. You'll also enjoy whiter, more brilliant lighting supplied by available tungsten-halogen, high beam headlamps.

The LeSabre, in all its forms, is a stylish, full-value automobile, with a generous measure of comforts and considerations.



LeSabre Limited Coupe



LeSabre

Once you get acquainted with LeSabre's interior, you'll know what genuine comfort is all about. Run your hand over the woven velour fabrics to appreciate what we mean. From behind the wheel, you see an instrument panel with black dial faces set off by rich, woodgrain vinyl trim.

One feature you're sure to like: We've made automatic electric door locks available.

And for extended highway driving, there's a new resume-speed feature on Cruise Master speed control that's available. One more new feature of note: Our exciting Delco Full-Feature radio/tape units are available for the first time in LeSabre. Try one of them coupled to an available four-speaker system with Extended Range speakers for a real sonic delight.

It's important, we think, to know how much comfort is standard. With any LeSabre, the notchback front seat with fold-down armrest is standard. The carpeting is thick and plush. The rear seat is equally comfortable, with deep, thick cushioning.

LeSabre or LeSabre Limited. Cars that richly reflect value beyond their price. Full-sized cars that are very much a necessity for many people. Perhaps for you.

▲ LeSabre instrument panel. Some equipment available at extra cost. ■ Available Cruise Master speed control with resume-speed feature. ● Available Electronic Touch Climate control air conditioner plus cassette tape and Full-Feature AM/FM stereo radio, standard warning light panel. ◆ Available coming lights. † Available reclining passenger seat. ‡ Available power windows and door locks. ● Available two-speed windshield wipers with delay. ✱ Available illuminated door lock and interior light control. † Available rear-window defogger.

LeSabre Interiors	Coups or Vinyl Notchbacks (V)	Coups or Vinyl 15.4L Notchbacks (L)	Coups or Vinyl Backs (D)	Unlimited Coups or Vinyl Notchbacks (U)	Unlimited Coups or Vinyl 15.4L Notchbacks (UL)
Coups	S	A	A		
Notchback	S	A			
Unlimited Coups				S	A
Unlimited Notchback				S	A

S = standard A = available



Regal

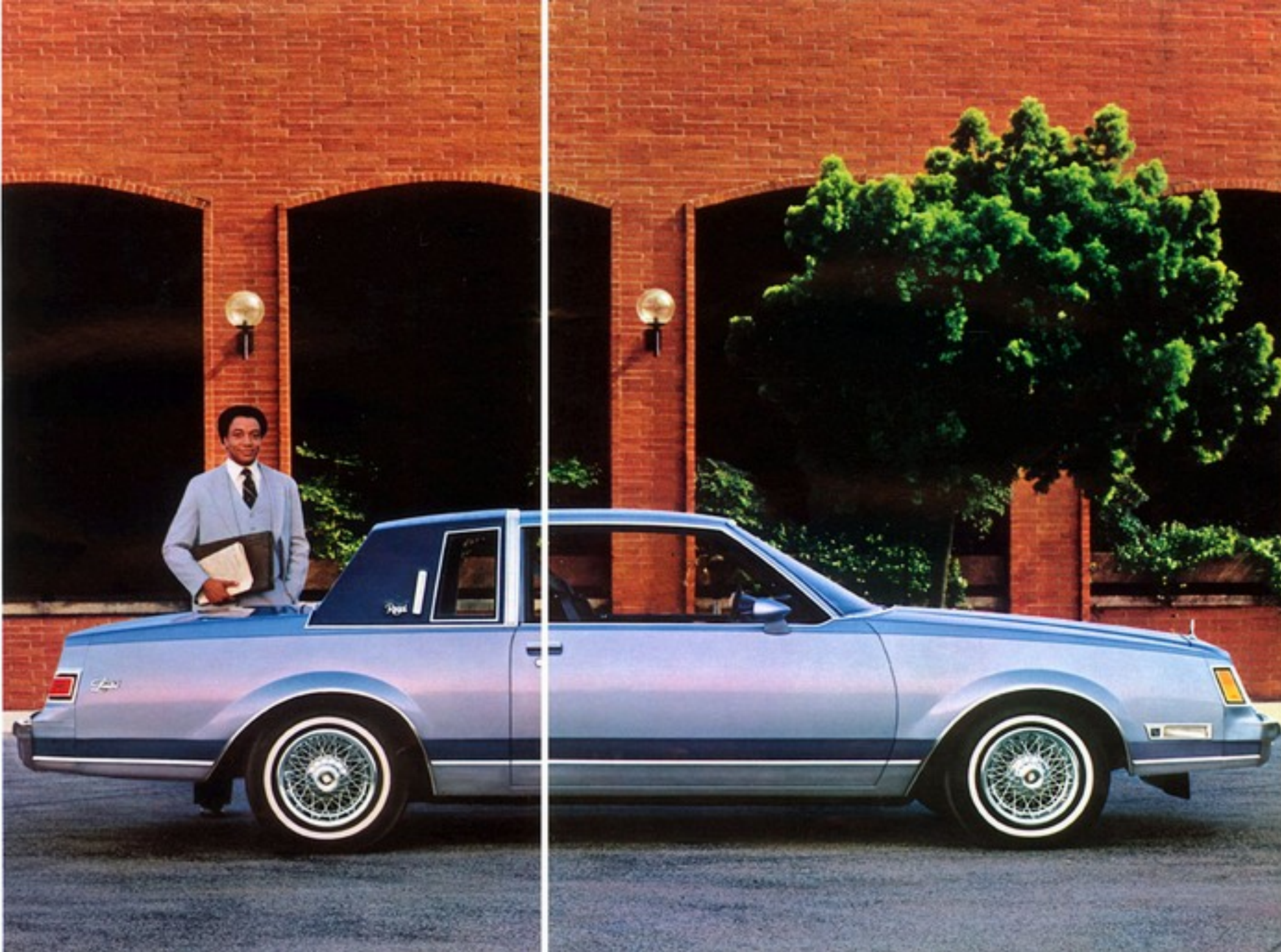
The stylists and engineers approached the 1981 Regal mindful that our present Regal has been one of the most popular Buicks in history. They were asked to make it even more appealing. What you see here is the handsome result of their handwork. We think you'll agree with our prediction that the 1981 Regal will be just as successful as ever.

A fresh new grille and downsloping hood meet the windshield in a way that slices through the air more clearly. Our engineers talk about "reducing coefficient of drag by 10%" compared to the 1980 Regal, and that's nice, since less drag means more efficiency. (Refer to the EPA estimate chart included with this catalog.) Next, look over the new rear deck treatment, topped by an aerodynamically correct spoiler lip. Here is new styling based on a wedge, which is a most aerodynamic and pleasing shape.

Notice the wide rocker molding that runs the full length of the Regal Limited, giving it a smooth, unbroken line. Even the front and rear bumpers are set flush with the sides to give Regal a smooth, aerodynamic appearance from every angle. You can order your Regal in a solid color, or select from a range of Designers' Accent schemes. There's also a smart new Decor Package available, in four colors, all with leather sections in Silver. Outside sport mirrors, turbine wheels, and a Sport steering wheel are included.

Both Regal and Regal Limited are powered by the 3.8 liter V-6 and automatic transmission with converter clutch, standard.

As we've said, our previous Regal was a tough act to follow. We confidently predict more success for our 1981. We think you'll agree.



Regal Limited Coupe

Regal

The Regal Sport Coupe, shown here, is more than a name. It's a concept, realized in part by sport mirrors, fast ratio power steering and autoairline P205/70R tires, all standard. The Sport Coupe concept is realized further with the standout hood feature: a bulge with "Turbo 3.8 Liter" in chrome. Underneath, the turbocharged V6 that has become justly famous for extra power on demand. It's now available with a dual exhaust system for an extra measure of excitement.

The concept really comes together with the new standard Gran Touring suspension. It brings the ride and handling concept finished on LeSabre T TYPE and Riviera T TYPE to Regal Sport Coupe.

A new available Sport Coupe option is a Decor Package, shown here, in a choice of four paints, all set off by a wide bright center rocker molding. Plus, turbine-style wheels set off the wheel wells, and you hold onto a Sport steering wheel.

Behold, behold our Regal Coupe, trimmed with some available equipment, that provides Regal benefits for many. But, even at its entry-level price, everything that makes a Regal a Regal is there.



Regal Coupe





Regal

The stylists didn't stop outside. They've worked their particular miracles inside, as well. Our Regal Limited interior lets you lounge in a new soft, knit wool, even on the upper part of the door. And underfoot, a new fur-like carpet extends to the lower section of the door. The regular Regal Limited seat is a 55/45 notchback with a fold-down center armrest. And we're offering a new available 45/45 seat arrangement, as well. Either seating choice can be ordered in cloth or available leather trim. Inside Regal and Regal Sport Coupe, a plush notchback front seat is standard, with either bucket or the 55/45 arrangement available.

We haven't overlooked entertainment needs, either. For the first time, you can order an available Delco ETR radio, complete with Extended Range speakers. Or add Extended Range speakers and a fixed mast antenna to any radio. Consider, too, available Cruise Master speed control with its resume feature, automatic electric door locks, and self-sealing tires.

When you operate the windshield wiper, you will enjoy the new fluid system. There is even a theft-deterrent system with starter interrupt available. The 1981 Regal. The magic continues.

▲ Regal instrument panel. Some equipment available at extra cost. ■ Available tungsten-halogen, high-beam headlamps. ◆ Available hatch roof. ◆ Available sport mirrors. ◆ Available instrument gauge package. ◆ Available coach lamps and landau top. ◆ Available Sport steering wheel. ◆ Available storage console. ◆ Side frame jack standard.

Regal interior	Cloth or vinyl	Leather (L)	Cloth (C)	Cloth (S)	Leather (S)	Leather (L)	Leather (S)	Leather (L)
Coupe	S	A	A	A	A	A	A	A
Sport Coupe	S	A	A	A	A	A	A	A
Limited Coupe	S	A	A	A	A	A	A	A

S=standard A=available
 ◆=leather available at extra cost



Century

You want a Buick, and you prefer it in a trim mid size. But you won't give up Buick's traditional comfort. And you want elegant, even formal, styling.

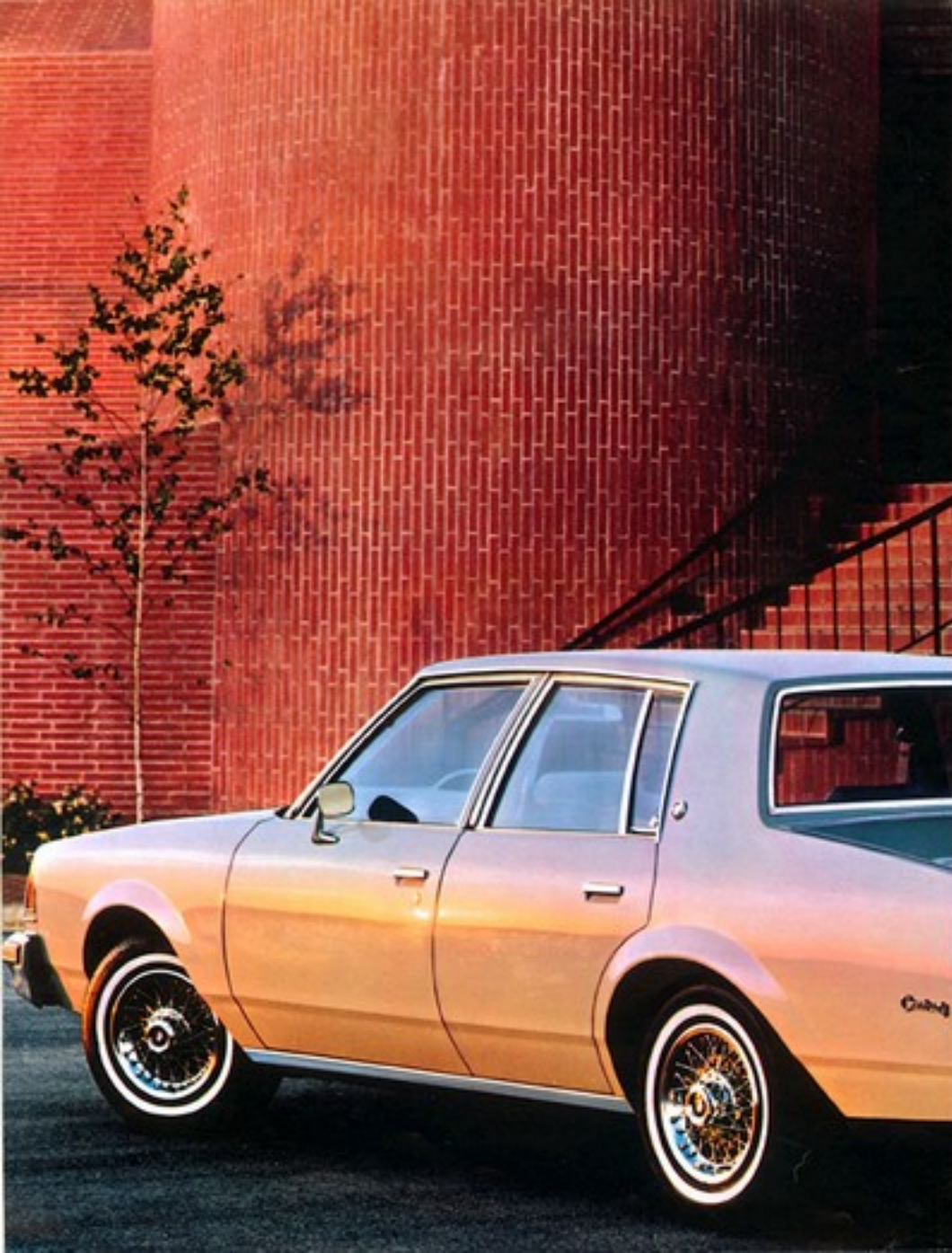
Then we think you're a prime prospect for the 1981 Century, our little limousine.

The Century Limited's formal notchback roofline signals the room you'd expect from a Buick. Its full coil suspension gives you the ride you expect. And as for styling, we let it speak for itself. 1981 styling refinements are just that: a restyled grille, and an available wraparound molding that runs around the car, from headlight to headlight. You will be able to order Designers' Accent paint combinations, as well. The finely integrated package concept — room, comfort, convenience — continues.

The Century's standard powerplant is the 3.8 liter V6. In Century Limited, the automatic transmission, which features a converter clutch, is standard. Power steering and power brakes are standard on every Century.

You can order a Century Limited with available electro-luminescent coach lamps, those little marvels of high technology. Low-rolling-resistance tires are standard. A new self-sealing tire, also a low-rolling-resistance design, is available.

We think the styling and room of the Century fills the gap between our compact Skylark and the full-size LeSabre very nicely. And apparently many people agree with us, because as we said, Century has been extremely popular. By now you know some of the reasons.



Century

Even this, our lowest priced Century, has all of the room and luggage space of our Century Limited. The engine choices are identical.

It shares the new Buick windshield washer system with other Buicks. That's the system that sprays two fans of washer fluid on the windshield from two units that have no moving parts.

In city traffic, Century's 108.1" wheelbase and trim overall length make it easy to maneuver. Its standard power steering makes it easy to park. Its trunk will swallow more than 36 cubic feet of your loadables. Bumper protective strips help to reduce the effects of life's little parking lot bumps.

Century, like most 1981 Buicks, has Computer Command Control, which provides good fuel economy while meeting stringent government emissions regulations. (Refer to the EPA estimate chart included with this catalog.) A full explanation of Computer Command Control can be found in our Buyer's Guide section.

Perhaps you should consider ordering your new Century with the available theft-deterrent system with starter interrupt. This system automatically sounds the horn and flashes the lights when triggered. Then, should someone attempt to start the car without a key, the system interrupts the starter circuit.

Our basic Century is, as you can easily see, quite un-basic. It has the room, the comfort, and the carrying capacity many of today's families want and need. And if the 1981 Century appeals to you, then welcome to Century's world.

Century

Century's seating has been arranged for lots of stretch-out room. An impressive amount, really, that belies the car's compact exterior. And what comfort, rich, new, soft-leaf wool-cloth done in 50/50 fashion in Century Limited, a different new cloth in a notchback arrangement for our regular Century with the credit option of a bench seat interior that brings the cost of owning a Century down even lower.

Once the interior has been chosen, Century's available equipment list offers much creative personalizing. Select either manual or automatic air conditioning. From the Delco radio/tape unit list, select one of three new ETB's (Electronically Tuned Receivers), or other radio/tape units. Specify available Extended Range speakers for remarkable sound. And a new, available fixed mast antenna improves fringe-area reception.

Enhance your convenience with automatic electric door locks. Help ease right-foot cramp on trips with available Cruise-Master speed control, now with a resume-speed feature. Both are new and available for Century.

You'll find a list of options in the Buyer's Guide, under "Century." Suffice it to say that your 1983 Century can be as posh, elegant, and convenient as you want it to be.

Which is one reason why it is so popular.

▲ Century instrument panel. Some equipment available at extra cost. ■ Power door locks, power windows, remote mirror, all available. ◆ Available tungsten-tungsten high-beam headlamps. ● Available remote-control sport mirrors. ▲ Available rear-door power vent windows. † Available six-way power seat. ● Available Cruise-Master speed control with resume-speed feature. ■ Automatic Climate Control air conditioner, Delco cassette tape player with AM/FM stereo radio, both available. † Side frame jack.

Century	Club or Vinyl	Club or Vinyl	Club or Vinyl	Club or Vinyl	Club or Vinyl
Model	150	150	150	150	150
Standard	▲	▲	▲	▲	▲
Limited Edition	■	■	■	■	■
Options	◆	◆	◆	◆	◆
Available	●	●	●	●	●
Extra Cost	▲	▲	▲	▲	▲
Not Available	†	†	†	†	†

▲ - standard ■ - available
◆ - credit option



Skylark

When we introduced the new Skylark, Buick's version of the "X" car, last year, we were more than pleased by your acceptance. Frankly, we were overwhelmed. Skylark quickly became the car Americans couldn't get enough of.

The 1981 Skylark promises more of a good thing. To the point, good things: Skylark, Skylark Sport and Skylark Limited.

You're going to like what Skylark offers: the impressive traction of front-wheel drive, its compact exterior (the engine is tamed sideways to conserve space—and save weight), its very roomy interior, the spacious 14.3-cubic-foot trunk.

1981 Skylark and Skylark Limited have a new grille and revised tail lamps. Electroluminescent coach lamps are available to add a luxury touch to Limited models. The Skylark Sport has a new Sport steering wheel to complement its black-accented interior and exterior. And, yes, if you select either of our other Skylarks, a new Sport steering wheel is available. And on Skylark or Skylark Limited, new self-sealing tires are also available.

Skylark represents one of a new breed of American-made cars.

It just might be right for you.



Skylark Limited Sedan



Skylark

Here is the driving buff's Skylark—the Skylark Sport. Either Coupe or Sedan gives the visual impression of a genuine road machine.

Its black-accented special grille, headlamps, smoked taillight lenses, plus amber front park and turn lamps, and bumper strips convey an unmistakable message. And to firmly establish the line of communication between driver and road, a Rallye ride-and-handling suspension, with 720S/70R steel belted radial tires, is standard.

Express your individuality by ordering available lower body-side stripes with Hawk decal. Now then, for Skylark. Both coupe and sedan are trimmed with a new, very handsome cloth. And, both offer the comfort, trunk size and front wheel drive you'd expect.

All Skylarks have a 2.5 liter 4-cylinder engine standard, and a 2.8 liter V-6 available. Four speed manual transmission standard, automatic available.



Skylark Coupe



Skylark

More of a good thing inside. In 1981. With standard notchback seats, you get room for two plus a front storage console complete with storage bin. A more luxurious operating console is available. An assortment of new fabrics and colors are available for the choosing. Limited models, in particular, offer a new woven velour cloth.

Bucket seats can be ordered with regular trim, limited trim, or with all new leather inserts in side window seats and seatbacks, depending on the Skylark you order. Check the Buyers Guide, Skylark section, for specifics.

The instrument panel, with its black gauge faces, is easy to read. A four-function steering column lever (horn signal, headlamp dimmer, windshield wiper, windshield washer) becomes a five-function lever if you specify the available resume-speed Cruise Master speed control.

The standard Delco AM radio (which may be deleted for credit) is complete with a new fixed mast antenna that improves fringe area reception.

Consider the array of audio accessories available—Extended Range speakers, plus a stereographic equalizer/booster that offers tone control in five ranges and extra power.

America, are you ready? Skylark is.

▲ Skylark instrument panel. Some equipment available at extra cost. ■ Available digital clock. ● Skylark Sport taillights. ◆ Five-in-one control lever with available Cruise Master speed control. ▣ Available power windows. ♣ Available engine compartment light. ▲ Available wire wheel covers. ■ 2.5 liter 4-cylinder engine. † Limited trim door courtesy/awning lights.

Skylark Interior	Cloth or Vinyl	Leather	Leatherette	Leatherette	Leatherette	Leatherette	Leatherette
Coupe	S	A					
Sport Coupe	S	A	A	A	A	A	A
Limited Coupe	S	A	A				
Sedan	S	A					
Sport Sedan	S	A	A	A	A	A	A
Limited Sedan	S	A	A				

E=standard A=available

Electra Estate Wagon

Here, for your careful consideration, we present Buick's most prestigious Estate Wagon. It proudly wears the name Electra.

First of all, it's a genuinely spacious accommodation, 67.9 cubic feet spacious, to be exact, with the rear seats folded down. Or, it can have the extra convenience of a third seat. The Electra Estate Wagon's interior has the appearance and feeling that some call the Electra mystique.

You have a choice of extremely comfortable seating. Five, all-cloth, 55/45 notchback, front-seat colors are available. Alternatively, there are two all-vinyl trim choices, as well as two cloth front, vinyl rear trim choices.

Of course, you'd expect that an Electra has considerable luxuries standard. And it does. Automatic transmission with overdrive with the standard 5.0 liter gasoline V-6 engine. Power steering, power brakes, white sidewall steel belted radial ply tires for starters. Add these standards: Air conditioning, power windows, electric door locks, tilt steering column, load floor carpet, two-way tailgate and roof rack with air deflector.

The entertainments available to you reflect the Electra attention to your pleasure—a total of 12 Delco radio combinations, including Full-Feature and CDJ units.

You can even select available Electronic Touch Climate Control air conditioning. Electronics control all comfort functions.

The plush seating, the new colonial oak exterior vinyl wood-grain trim, the serene atmosphere. It's all here in the 1981 Electra Estate Wagon.

Electra Estate Wagon

- ▲ Swing-open tailgate showing available vinyl third seat
- Electronic Touch Climate Control air conditioner, Delco AM/FM Stereo Full-Feature radio, both available
- Lockable storage compartment
- ◆ Open tailgate and fold down second seat
- ◆ Available 5.7 liter diesel V-6
- ◆ Automatic transmission with overdrive

Electra Estate Wagon interior

Electra Wagon

Electra Wagon

Electra Wagon

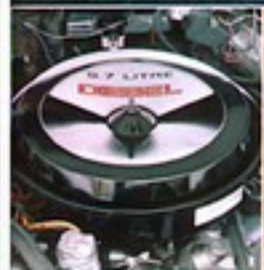
Electra Wagon

Electra Wagon

Electra Wagon

Electra Wagon

Electra Wagon



1981 Buick Electra Estate Wagon



LeSabre Estate Wagon

For years, station wagon buyers who wanted a full-size wagon with a high degree of comfort have, naturally, bought Buick LeSabre Estate Wagons.

In that respect, 1981 ought to be no different. LeSabre Estate Wagon offers a full 87.9 cubic feet of tote space with the rear seat folded down, a standard rear compartment light, and a carpeted load floor area. Plus, you can select from a satisfying list of available options eminently suited to the wagon buyer.

First, though, you probably would like to know about some of LeSabre Estate Wagon's standard features. Begin on the inside with the wide range of seating. The standard notchback front seat is available in four colors of cloth. Or, consider two all-velvet or two cloth with vinyl trim choices.

More luxurious seating is available. A 10x15 notchback front seat is available in the same number of cloth, cloth-with-velvet, or all-velvet trim combinations.

Next, please turn your attention to just how luxuriously the LeSabre Estate Wagon is trimmed. The cloth is a rich, woven velvet. Carpeting is thick, and plush. Even the seats make lavish use of thick foam for settle-back comfort.

Then consider the vast range of standard comforts. From power steering, power front disc brakes to power tailgate window and a lockable, hidden storage compartment, you'll find that LeSabre Estate Wagon deals with your requirements the way you like.

Full-size wagons require muscle. Standard power is a 5.0 liter gasoline V-6, coupled to a new automatic transmission with overdrive. A 5.7 liter diesel V-6 with conventional automatic transmission is available.

The LeSabre Estate Wagon. It brings the full-size comfort you want, the full-size carrying capacity you need.

LeSabre Estate Wagon

- ▲ Available two-speed windshield wiper with delay
- ▲ Available load-equalizing trailer hitch
- ▲ Available six-way power seat

LeSabre Estate Wagon interiors

Estate Wagon

— cloth front, vinyl rear available

Cloth or Velvet Notchback (N) 10x15 Cloth or Vinyl Notchback (S)

Century Wagons

The two vehicles presented here are for people who want the luxury of a Century and the convenience of a station wagon. 71.8 cubic feet of convenience, to be exact, with the rear seat folded down.

Thoughtfully, the Century Station Wagon is the answer to both needs. And the Century Estate Wagon is even more so, with a higher level of luxury.

Both Century Wagons offer most of the equipment, interior, and options found on Century Sedans. Among the standard items: a 3.8 liter V-6, automatic transmission, power steering and brakes.

The Century Wagon's stretch-out room just has to be seen and tried. The Century Estate Wagon's ratchback front seat is a new, different cloth brings more elegance to the interior. Or, you can order a Century Wagon with an all-vinyl bench front seat interior and bring the cost of owning Century even lower.

Hardly anyone buys either Century Wagon without looking at the wagon options available. And they include, among other things, an available trailer-towing package rated for 4,000 lb. trailers using the standard 3.8 liter V-6 engine.

Of course, for pure creature comforts, order either manual or automatic air conditioning. Choose one of three new available Delco ETR radio/tape units, and specify a new fixed mast antenna for improved fringe-area reception.

The Century Wagons embody fundamentally sound, Buick ideas about station wagons. They've been popular choices for years. We think 1981 models will continue to be as popular.

Century Wagon (left) and Century Estate Wagon

▲ Side frame jack ■ Available Cruise-Master speed control with resume-speed feature. ☐ Automatic Climate Control air conditioner, Delco cassette tape player with AM/FM stereo radio, both

Century Wagon
Interior

Station Wagon S

Estate Wagon S' A' A'

S—standard A—available
*cloth front, vinyl rear available



The 1981 Buick Buyer's Guide

The next four pages are devoted to some of the things we think are pretty impressive about our 1981 Buicks. You'll be able to explore front-wheel drive with us in some detail. We've taken apart one particularly interesting feature—the new Buick windshield washer. We think you'll find a washer system that uses no moving parts intriguing...we did. And, you'll see some of our high-technology advances, as well. Some are standard, like the Computer Command Control system (except on available diesel engines). Others are available, like Electronic Touch Climate Control and Cruise-Master speed control that resumes your preset speed.

All of them represent Buick's continuing desire to bring the latest in comfort, convenience, and yes, prestige to you, the Buick customer.

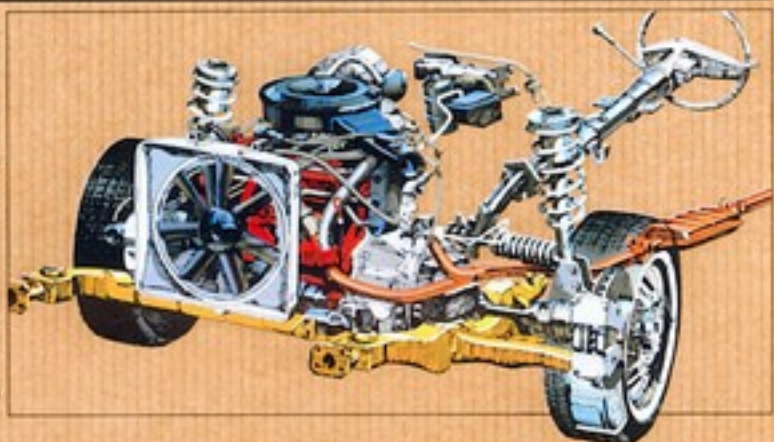
Front-wheel drive.

Judging by the way the industry is designing cars with front-wheel drive, we think we've been on to a pretty good thing for some time now.

Both Riviera and Skylark are front-wheel-drive vehicles. Both offer impressive traction in foul weather or ice. And for good reason. First, the mass that represents the engine and transmission is concentrated directly over the driving wheels.

Secondly, the wheels that do the driving also do the steering. Both facts result in a firm feeling behind the wheel.

Another benefit, not to be overlooked in this design, is generous interior room, one result of engine placement. Even with short, compact exteriors, interior leg room remains impressive.



The new automatic transmission with overdrive.

That's right, an automatic with overdrive. It's a brand-new, fully automatic transmission that is standard (depending on engine selection) in all Electras and the LeSabre Estate Wagon, available in LeSabre Coupes and Sedans. It functions in the same manner as other automatics, with one important exception. At about 45 mph, the transmission automatically shifts into an overdrive fourth gear. Regular automatics have a direct drive, or

1:1 ratio in high, this transmission's fourth gear ratio is .67:1. Hence, engine speed is reduced by approximately one-third at speeds over 45 mph. Example: Say the engine turns 2000 rpm at 45 mph. With fourth gear engaged, it will turn at a much more leisurely 1340 rpm. And with reduced engine speed, comes reduced fuel consumption.

There is no special technique necessary to drive with this transmission, just put it in "D" and go.

A convolver clutch for our other, rear-wheel-drive automatics.

Actually, this unit was introduced during 1980 on selected models. This year, it's in every rear-wheel-drive automatic, and it's on third and fourth gears of our new automatic transmission with overdrive. A special damper in the clutch assembly enhances drivability and performance.

Even the clutch plates in the automatics benefit from advanced development. They're called, "low-spin-loss" clutch plates. Tiny grooves on the plates allow transmission

fluid to flow between the plates, reducing friction. It's a small improvement, to be sure. But we think it's one that you'll appreciate.

A caliper we call "low-drag"

A special piston seal in the front disc brake caliper acts as a return spring and pulls the brake pads away from the rotor, helping to eliminate drag. They are standard on Skylark, LeSabre, and Electra.

New self-sealing tire.

Here's a new available tire that stands up to nails. Nails up to 3/16" thick, that is, which is by any measure a hefty spike.

A special puncture-sealing material lines the inside of the tire tread and fills most holes in the tread left by nails when they're removed. In most cases, there's no untimely flat. These tires, like the standard tires, are of low-rolling-resistance design.



Self-sealing tires are available on all 1981 Buick models except Skylark Sport models, Regal Sport Coupe, and Riviera T Type, which feature special sizes of tires. Consider them extra peace of mind.

A windshield washer with no moving parts.

None at all, other than the washer pump. If you've ever seen a garden hose flopping around when water is pouring out of it, that gives you a good idea of the way the new Buick windshield washer system works.

Each actual washer unit is about half an inch wide and an inch long. Inside are specially constructed chambers. As washer fluid is pumped in, the chamber design causes the fluid to change direction very rapidly, (much like that garden hose). Fluid is forced out left, then right, then left again, at the rate of about 100 such cycles per second. To the eye, the spray appears as a fan of fluid on the windshield.

You'll find the new Buick system on Century, Regal, and Riviera.

Riviera



Riviera Coupe.



Riviera T Type.

Electra



Electra Limited Coupe.



Electra Limited Sedan.



Electra Park Avenue Coupe.



Electra Park Avenue Sedan.

LeSabre/Electra Estate Wagons



LeSabre Estate Wagon.



Electra Estate Wagon.

LeSabre



LeSabre Coupe.



LeSabre T RM Package.



LeSabre Sedan.



LeSabre Limited Coupe.



LeSabre Limited Sedan.

Century



Century Sedan.



Century Limited Sedan.

Century Wagons



Century Wagon.



Century Estate Wagon.

Regal



Regal Coupe.



Regal Sport Coupe.



Regal Limited Coupe.

Skylark



Skylark Coupe.



Skylark Sedan.



Skylark Sport Coupe.



Skylark Sport Sedan.



Skylark Limited Coupe.



Skylark Limited Sedan.

Give Skylark's sound a real boost.

If you are deeply involved in home stereo, you probably know about graphic equalizers, and their purpose. Now you can order one with several stereo units in a Skylark, and get an added power boost, as well.

Notice that, in place of ordinary tone control knobs, there are the tone control sliders. They give 12 dB control over five segments of the audio range, centered at 60 Hz, 250 Hz, 1000 Hz, 3500 Hz and 10000 Hz. By arranging them in a way that suits your listening preferences, the sliders give a pictorial representation of what you're listening to. Hence, the term, "graphic." You can make deep bass sounds punchier. Bump up the treble drums, or take them into the background. Make voices more, or less, dominant. And give the bass or extreme trebles on tri angles as much, or as little, zing as you prefer.

There are five power lights that flash when the booster section delivers more power. And a fader

control lets you adjust the volume between front and rear speakers. The Delco Graphic Equalizer booster. Available for more sound excitement and to give you more pleasure in 1981 Skylarks.

Fixed-mast antenna.

In many metropolitan areas, more and more tall buildings and increasing numbers of radio stations have made getting and holding the station you want increasingly difficult. If this plight sounds all too familiar, rejoice. We offer a fixed mast antenna with many radios on Century and Regal, and furnish it as standard equipment on Skylark. (You may still specify the windshield antenna, it's on the available list.)

The fixed mast antenna is the best average height for FM reception, and also serves the AM band well. It is not, however, for use with CB units.

Serious Highway stereo.



Our Concert Sound six-speaker system, introduced on last year's Electra Park Avenue Sedan, is available on all Electra Coupes and Sedans, and on all Riviera. And if you're serious about your highway stereo, you'll want to read on.

This premium-quality system can be ordered with either our Delco Full-Feature or TSS (Electronically Tuned Receiver) unit, and it gives substantial improvement over conventional stereo systems.

In each front door, the Concert Sound system features a 4" x 6" coastal speaker (which includes a

tweeter). Another 4" x 6" speaker is mounted in each of the rear doors (or rear quarter panels). And two Extended Range speakers are mounted in the rear-window filler panel. Six speakers in all.

The results are truly fantastic. Every passenger hears good stereo. Extended Range speakers are included with TSS units and may be ordered as a separate option in all 1981 Buick sedans and coupes. It doesn't matter if your tastes run to rock, disco, classical, or easy listening. You'll like what Extended Range speakers do to what you hear.

The Trip Monitor: a little bit of electronic know-how.



The Trip Monitor, available in Riviera, is an on-board microprocessor that's programmed to accept your data input. You can give it instructions for trip length, and touch the appropriate buttons and it will give you back an incredible amount of information: average speed, estimated time of arrival, remaining miles, time of day, road speed. The Trip Monitor

displays its information on a digital readout.

It can be rightly called an information module, as well, set to display engine temperature, fuel remaining, and more. Not only is your speed digitally displayed, you can convert all readouts to metric, and back, by flipping one switch. It's truly remarkable.

Electronic Touch Climate Control air conditioning. "Electronic" says it all. Instead of conventional controls, this unit presents two horizontal touch-control surfaces. And inside them, tiny light-emitting diodes (LEDs) confirm your selection.

Note the top row in the illustration. Temperature range is displayed from 65 to 85 degrees F, in 2.5-degree increments. The lower row displays functions. Choose automatic, or bi-level, defrost, or whatever the situation requires.

Touch the appropriate function surface and temperature surface, and quickly,

smoothly, the unit does your bidding. When the temperature you've selected is reached, the unit slows itself down while it maintains the temperature. You can keep the fan in high gear by touching "High Fan," if you desire.

Electronic Touch Climate Control air conditioning is available in all LeSabre, Electra and Riviera models.



Resume speed of the Rick of a switch.

Cruise-Master speed control, long a favorite with Buick owners, is offered with a new feature: a resume-speed switch. With it, you set your driving speed as before. Then, even if driving conditions require a series of slowing and accelerating maneuvers, you can resume your original, preset speed by merely engaging the switch labeled "resume" when conditions permit. The resume-speed feature adds immeasurably to highway convenience.

Trailer towing and 1981 V-6 Buicks.

All of the vehicle and engine downstaring may have left you wondering if trailering and V-6 engines would ever be compatible. If your trailer weighs no more than 4,000 pounds, it can be. Because 1981 Buick Century, Regal, LeSabre, and Electra can be equipped with V-6 trailer-towing packages available in late October, 1980.

Century and Regal trailer-towing packages couple the 3.8 liter V-6 with an automatic transmission

and a 3.23:1 axle ratio. They can pull up to 4,000-lb. trailers. LeSabres and Electras (except wagons) get a 4.1 liter V-6 and a 3.23:1 axle ratio plus the new automatic transmission with overdrive. So-equipped, they can pull up to a 4,000-lb. trailer. Not only can you pull the trailer in third gear, you can enjoy the economy of fourth gear when you're not pulling the trailer.

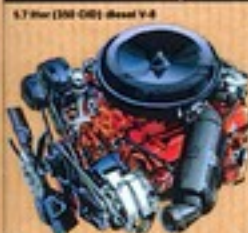
If you're a trailering fan, you already know the value of a firm

ride-and-handling suspension, heavy-duty cooling, and high-output Delcotron generator—all included in the trailer-towing package. If you're new to trailering, read and heed.

We've prepared a special trailer-towing pamphlet which is available at your Buick dealer's. Ask for it. Just because cars and engines have been downsized is no reason to miss out on trailering fun. With many properly equipped Buick V-6 models, hitch up and go.

There's an impressive array of engines available for 1981 Buicks, including a four-cylinder, three different sizes of V-6, and V-8s, including one that doesn't run on gasoline at all. We're referring, of course, to the available 5.7 liter diesel V-8, introduced last year on LeSabre and Electra. Now, the 1981 Riviera is available with the diesel V-8.

The engine family.



Some good reasons why diesels are popular.

Impressive fuel economy makes diesel power a very viable alternative. But there's another benefit that makes good sense: no tune-ups are required, because there are no spark plugs, and there is no carburetor or distributor.

To deal with starting in cold weather, a diesel V-8 is supplied with two batteries and special glow plugs.

Wider use for the 4.1 liter V-6.

Last year, we introduced the 4.1 liter V-6 as the standard engine for Electra Coupes and Sedans. It was also available in similar LeSabre models.

This year, it is the standard powerplant in the Riviera as well as Electra. And, it is available for the first time in the Riviera T TYPE, and con-

tinues to be available in LeSabre Sedans and Coupes.

Its 252 cubic-inch displacement makes it well-suited to move Electra, LeSabre, or Riviera with smoothness and aplomb. You will find it very satisfying, and certainly in keeping with your demand for efficiency and response in both full-size and personal luxury offerings.

The turbocharged V-6.

Buick is known as "The Home of the Turbocharged V-6," because this engine first appeared in selected 1978 Buicks. It continues to be the standard offering in the Regal Sport Coupe. It is available in the Riviera and standard in the Riviera T TYPE, except in California.

Outwardly, the turbocharged engine appears different because of

3.8 liter (231 CID) 4-434, turbocharged V-6



the compressor and intake and exhaust plumbing surrounding it. Driving one gives you the feeling that you're driving two different engines. Under normal conditions, it behaves much like a normal 3.8 liter V-6. When the situation demands more power, pressing the accelerator causes the exhaust-driven turbocharger to speed up and the engine increases its power. Lift your foot, the turbocharger slows down, and the engine returns to its normal mode.

The turbocharged engine is equipped with an electronic Turbo Control Center™ to control spark, compensate for fuel octane, atmospheric conditions, load, altitude, and other driving conditions. Clearly, this technology has made turbocharging practical, judging by the way other manufacturers are following suit. But you can drive an original, now.

The V-6 Buicks.

Every Buick Sedan or Coupe can be ordered with a V-6 engine. In fact, except for Skylark, they're standard. These smooth, even-temper engines are available in a 2.8 liter size for Skylark, and 3.8 liter form, standard in Century, Regal, and LeSabre. The 4.1 liter V-6 is the basic engine in both the Electra and the luxury Riviera.

Their short, compact design

saves weight over a V-8 and they occupy less space. They're appropriate for today's body styles. This size and weight saving promotes economical operation, which is more important today than ever.

3.8 liter (231 CID) 4-434, V-6



V-8s and Buicks.

We offer a range of available V-8 engines for people who want and need V-8 power. The 5.0 liter engine is standard in LeSabre and Electra Estate Wagons. This engine, along with a 4.3 liter V-6, is offered in most other models except Skylark.

Little needs to be said for the V-8 engine, millions of them are in use. If your driving requires the extra power of a V-8, then by all means, specify one.

Computer Command Control. It means impressive economy and emission control.

Computer Command Control is the result of a lot of serious thinking about how to meet gasoline engine emissions standards and keep driving pleasant. You want a car that starts easily, runs smoothly while the engine's warming up, and delivers satisfying fuel economy.

For 12 years, the government has set wide emission standards. To meet the latest standards, GM's specialists devised an electronic control system for carburetors, and a three-way catalytic converter, which appeared on 1978 California Buicks. This practical application of electronics, to the problems of

emissions control and durability, appeared in a more refined form on selected 1980 Buicks.

Now, in 1981, you have Computer Command Control. It's heart is a microprocessor that contains solid-state components. They can be given instructions when they're built to respond to operating conditions in special ways. Information comes from sensors placed at strategic locations on the engine and in the exhaust system. These sensors give information that the microprocessor acts on several times every second. The result is programmed control of emissions,

and the air/fuel ratio favorable to real-world requirements. Adjustments are made continuously to the engine. The exhaust emerges mostly CO₂, water, nitrogen, and oxygen. Very few impurities remain.

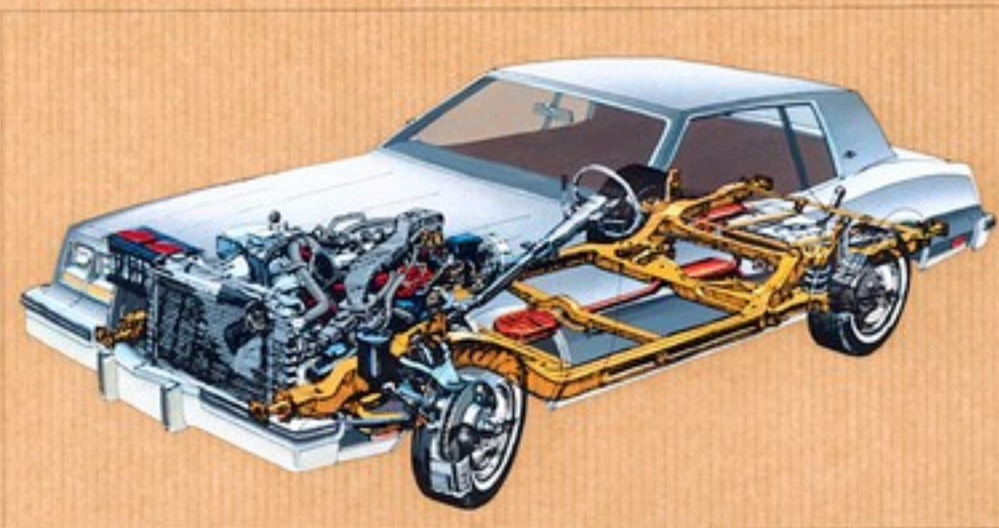
The on-board electronics unit is also used to diagnose itself. A diagnostic light on the instrument panel will flash a code to identify certain system problems, should they occur. The coded flashes tell a trained service technician possible malfunction causes.

The electronics even control converter clutch engagement in the automatic transmission on rear

wheel-drive models.

All turbocharged Buicks, and all Electra models with the 4.1 liter V-6, will use a second electronics module with instructions to adjust spark timing.

So Computer Command Control represents a triumph by the engineers over real-world demands for emission control, good economy and durability, particularly in cold weather. Making this system work in the lab took some creative thinking. Making it practical for production cars represented a quantum leap in technology and its application... and you benefit.



Available Models

Riviera	V17
Riviera T Type	V17

Riviera/Riviera T Type Powerteams

Engines	Transmission
Riviera	
4.1 liter (251 CID)	Automatic (standard)
4.96L V-6 (standard)	Automatic (standard)
3.8 liter (231 CID)	Automatic (standard)
4.96L turbocharged V-6 (available except in California)	Automatic (standard)
5.0 liter (307 CID)	Automatic (standard)
4.96L V-6 (available)	Automatic (standard)
5.7 liter (350 CID) Diesel V-6 (available)	Automatic (standard)
Riviera T Type	
3.8 liter (231 CID)	Automatic (standard)
4.96L turbocharged V-6 (standard—not available in California)	Automatic (standard)
4.1 liter (251 CID)	Automatic (standard)
4.96L V-6 (available)	Automatic (standard)
5.0 liter (307 CID)	Automatic (standard)
4.96L V-6 (available)	Automatic (standard)

Please refer to the powertrain engine chart on the insert provided to your dealer with this catalog.

Dimensions

inch (centimeters)	
Wheelbase	1,095 (114.8)
Track, front	1,584 (99.3)
Track, rear	1,524 (98.8)
Length	5,267 (266.4)
Width	1,817 (71.5)
Height	1,378 (54.3)
Front Inhibitor	
Head room	562 (27.9)
Leg room	1,088 (43.8)
Shoulder room	1,434 (56.5)
Hip room	1,363 (53.7)
Rear Inhibitor	
Head room	562 (27.9)
Leg room	687 (28.5)
Shoulder room	1,420 (55.9)
Hip room	1,245 (49.3)
Trunk capacity, liters (cu. ft.)	448 (15.8)
Fuel tank capacity, liters (gal.)	
V-6 engines	79.8 (21.1)
V-8 gas engine	79.8 (21.1)
V-8 diesel engine	86.5 (22.8)

Standard Equipment

Engine/Chassis

- 3.8 liter (231 CID) 4-bbl. turbocharged V-6. This engine NA, California (T TYPE)
- 4.1 liter (252 CID) 4-bbl. V-6 (Riviera)
- Computer Command Control with gas engines
- Front-wheel drive
- Automatic transmission
- Power steering
- Gen Touring suspension (T TYPE)
- Low-rolling resistance tires (Riviera)
- Steel-bellied, radial-ply whitewall tires P205/75R15 (Riviera)
- Steel-bellied, radial-ply narrow white stripe wide-oval tires G2015 (T TYPE) Note: Difficulty may be encountered using tire chains with these tires on the front wheels. See your Buick dealer for details.

- Power front disc/rear drum brakes
- Independent 4-wheel suspension
- Coil-spring rear suspension
- Torsion-bar front suspension
- Delco Freedom II Battery
- Extensive use of insulation for quietness
- Front and rear stabilizer bars
- Automatic level control

Comfort and Convenience

- Cloth bucket seats with center console (T TYPE)
- Cloth 45/45 notch-back seats with center armrest (Riviera)
- Power windows
- Soft-Ray tinted glass
- Quartz-crystal-controlled digital clock
- Delco AM-FM stereo radio—a delete radio option available

- Automatic power antenna
- Trip odometer
- Cornering lights
- Lights: front ambient, under-dash courtesy, glove compartment, luggage compartment
- Electric door locks
- 6-way power seat—driver's side
- Full-foam seat construction
- Fluidic windshield washer system
- Air conditioning
- Tungsten-halogen, high-beam headlamps (T TYPE)
- Remote-control, outside, styled black scanview mirrors—left- and right-hand (T TYPE)
- Remote-control, outside, styled chrome scanview mirrors—left- and right-hand (Riviera)
- Door courtesy and warning lights
- Side-window defroster outlets

- Combination turn signal and high/low beam headlight control

Appearance and Protection

- Arrive front parking and turn lanes (T TYPE)
- Front and rear bumper guards
- Bumper protective strips—front and rear
- Cut-pile carpeting—front and rear
- Inside hood lock release
- Sport steering wheel (T TYPE)
- Custom steering wheel (Riviera)
- Deluxe wheel covers (Riviera)
- Designers' Sport wheel covers (T TYPE)
- Dual retraction seat/shoulder belt system
- Color-coordinated seat and shoulder belts
- Body-side stripes (T TYPE)

Available Equipment

Engine

- California assembly-line emissions equipment and testing (required in California)
- Engine block heater
- Heavy-duty battery
- 85-amp. Delcotron generator
- Heavy-duty engine and transmission cooling

- Electric fuel cap lock (NA, with diesel engine)
- Cruise-Master speed control with resume feature
- Low-fuel indicator
- Trip monitor
- Front and rear light monitors
- Illuminated door lock and interior light control
- Twilight Sentinel headlamp control

- Delco CB and AM-FM stereo radio with Triband power antenna
- Delco cassette tape player and Full-feature AM-FM stereo radio
- Delco 8-track tape player and Full-feature AM-FM stereo radio
- Delco Extended Range Speakers
- Delco Concert Sound Speaker System
- Triband power antenna (included with CB radio)
- Sport steering wheel (std. T TYPE)
- Tilt steering wheel
- Tilt and telescoping steering column (NA, T TYPE)

Chassis

- Firm ride-and-handling suspension (NA, on T TYPE)
- Gen Touring suspension (std. on T TYPE)
- Steel-bellied, radial-ply whitewall tires—G2015 (std. on T TYPE)
- Steel-bellied, radial-ply whitewall tires—P205/75R15 (std. on Riviera)
- Self-sealing P205/75R15 tires
- Four-wheel disc brakes

- Electrically operated, outside, scanview mirrors—left- and right-hand remote
- Lighted visor vanity mirror—driver's or passenger's side
- Windshield wiper low-fuel indicator
- 2-speed wiper with low-speed delay feature

Appearance and Protection

- Front and rear carpet covers with inserts
- Trunk trim carpeting
- Exterior coach lamps (included with vinyl tops)
- Door-edge guards
- Color-coordinated protective body-side moldings
- Designers' Accent Paint (NA, T TYPE—NA, with body-side stripes)
- Sunroof—electric operation*
- Heavily padded Landaui top with coach lamps
- Astoroof—electric sliding glass*
- Body-side stripes (std. on T TYPE—NA, with Designers' Accent Paint)
- Custom locking wire wheel covers
- Chrome-plated road wheels (4)
- Theft-deterrent system with starter interrupt

Interior

- Leather-trimmed 45/45 seats (Riviera only)
- Leather-trimmed bucket seats (T TYPE)
- 6-way power seat—passenger side
- Reclining electric seatback—driver's or passenger's side
- Reclining manual seatback—passenger side (T TYPE only)

- Tungsten-halogen, high-beam headlamps (std. T TYPE)
- Delco ESP-AM-FM stereo radio
- Delco Full-feature AM-FM stereo radio
- Delco 8-track tape player with AM-FM stereo radio
- Delco 8-track tape player with ITR-AM-FM stereo radio
- Delco cassette tape player and ITR-AM-FM stereo radio
- Delco cassette tape player with AM-FM stereo radio

Comfort and Convenience

- Electronic Touch Climate Control air conditioner
- Electric rear-window defogger
- Automatic electric door locks
- Electric trunk release
- Electric trunk lock

- Delco CB, 8-track tape player and ITR-AM-FM stereo radio with Triband power antenna
- Delco CB, cassette tape player and ITR-AM-FM stereo radio with Triband power antenna

*Head room is reduced slightly with this option. NA—not available

Ordering Guide

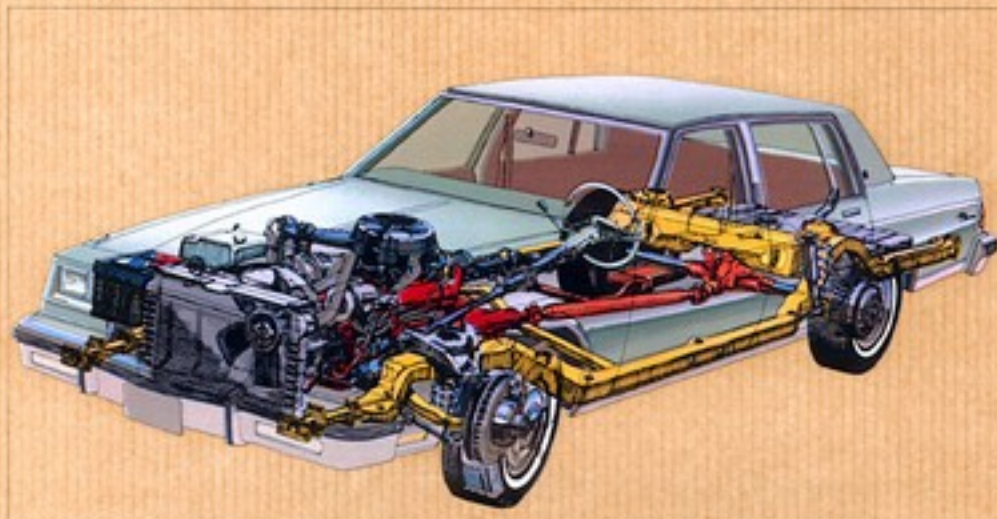
Model selected:

Engine choice:

Be sure to consider:

- Twilight Sentinel headlamp control
- Electric trunk lock
- Delco Full-feature AM-FM stereo radio
- Theft-deterrent system with starter interrupt
- Chrome-plated road wheels (4)
- Electric sliding glass astoroof*

Additional selections:



Available Models

Electro Limited Coupe	X37
Electro Limited Sedan	X48
Electro Park Avenue Coupe	W37
Electro Park Avenue Sedan	W48
Dodge Wagon shown on pages 42-43	

Electro Limited/Electro Park Avenue Powertrains

Engines	Transmission
4.1 liter (242 CID)	Automatic with overdrive
4-864, V-6 (standard)	(standard)
5.0 liter (307 CID)	Automatic with overdrive
4-864, V-6 (available)	(standard)
5.7 liter (350 CID)	Automatic
diesel I-6 (available)	(standard)

Please refer to the powertrain engine chart on the insert provided to your dealer with this catalog.

Dimensions

mm (inches)	Coupe	Sedan
Wheelbase	3,026 (118.4)	3,026 (118.4)
Track, front	1,540 (60.6)	1,540 (60.6)
Track, rear	1,541 (60.7)	1,541 (60.7)
Length	3,622 (142.3)	3,622 (142.3)
Width	1,928 (75.9)	1,928 (75.9)
Height	1,387 (54.6)	1,387 (54.6)
Front interior		
Head room	979 (38.5)	1,003 (39.5)
Leg room	1,072 (42.2)	1,070 (42.1)
Shoulder room	1,521 (59.9)	1,520 (59.8)
Hip room	1,408 (55.4)	1,408 (55.4)
Rear interior		
Head room	961 (37.8)	967 (38.0)
Leg room	1,068 (41.7)	1,059 (41.7)
Shoulder room	1,498 (59.0)	1,520 (59.4)
Hip room	1,410 (55.5)	1,408 (55.4)
Trunk capacity, stock (cu. ft.)	589 (20.8)	589 (20.8)
Fuel tank capacity, when full (gal.)		
Gasoline engines	95 (35.9)	95 (35.9)
V-8 diesel engine	102 (37.9)	102 (37.9)

Standard Equipment

- Engine/Chassis**
- 4.1 liter (252 CID) 4-cyl. V-6
 - Computer Command Control
 - Automatic transmission with overdrive
 - Automatic transmission (with available diesel engine)
 - Power steering
 - Power front disc/rear drum brakes
 - Steel belted, radial-ply whitewall tires—P215/79R15
 - Low rolling resistance tires
 - Side frame jack
 - Coil spring suspension—front and rear
 - Computer selected chassis springs
- Delco Freedom II Battery**
- Anti-corrosion protection
 - Low-drag brakes
- Comfort and Convenience**
- Cloth 55/45 notchback seat (Limited)
 - 50/50 divided cloth front seats with belt armrests (Park Avenue)
 - Compact spare tire
 - Power windows
 - Air conditioning
 - Delco AM/FM stereo radio—a delete radio option available (Park Avenue)
 - 2-way power seat—driver's side
 - Windshield wiper system with single-wipe feature
 - Full-foam seat construction
- Lights: front, side, trunk, under dash courtesy, glove compartment**
- Remote-control, outside, rearview mirror—left remote, right manual (left on Park Avenue is electric)
 - Quartz-crystal digital clock
 - Combination turn signal and high/low beam headlight control
 - Dome reading lamp
 - Extensive acoustic insulation
- Appearance and Protection**
- Bumper protective strips—front and rear
 - Front and rear bumper guards
 - Cue pile carpeting—front/rear
 - Wide rocker appearance moldings (Park Avenue)
- Dual retractor front-seat shoulder belt system (Park Avenue)
 - Delete wheel covers (Limited)
 - Custom wheel covers (Park Avenue)
 - Electroluminescent coach lamps and insignia on instrument panel (Park Avenue)
 - Padded halo vinyl top (Park Avenue)
 - Belt, new and rocker moldings (Limited)
 - Body-side moldings with ventports (Park Avenue)
 - Custom seat and shoulder belts—color-coordinated
 - Color-coordinated protective body-side moldings (Limited)

Available Equipment

- Engine**
- California assembly line emissions equipment and testing (required in California)
 - Engine block heater
 - Heavy-duty battery
 - 85-amp Delcocon generator
 - Heavy-duty engine and transmission cooling
- Chassis**
- Limited-slip differential
 - Automatic level control
 - Firm ride-and-handling suspension
 - Steel belted, radial-ply, wide whitewall tires—P225/75R15
 - Self-sealing tires
- Interior**
- 55/45 Leather trimmed notch back seat (Limited)
 - 50/50 Leather trimmed seats—(Park Avenue)
 - Gray power seat—driver's side, passenger side, driver and passenger side
 - Reclining electric seatback—passenger side, driver's side
- Comfort and Convenience**
- Automatic air conditioner
 - Electronic Touch Climate Control air conditioner
 - Electric rear window defogger
 - Electric door locks
 - Automatic electric door locks
 - Trunk trim carpeting
 - Soft-Ray tinted glass
 - Cornering lights
 - Door courtesy and warning lights (std. on Park Avenue)
 - Illuminated door lock and interior light control
- Front and rear light monitors
 - Twilight Sentinel headlamp control
 - Remote-control, outside, rearview mirrors—right-hand (NA, on Park Avenue)
 - Remote-control mirror with outside illuminated thermometer—left-hand (NA, on Park Avenue)
 - Outside, rearview spot mirrors—left- and right-hand remote (NA, on Park Avenue)
 - Electrically operated, outside, rearview mirrors—left- and right-hand remote (NA, on Park Avenue)
 - Electrically operated, outside, rearview mirrors with left illuminated thermometer—left- and right-hand remote (NA, on Park Avenue)
 - Electrically operated, outside, rearview mirror with illuminated thermometer—left-hand (Park Avenue only)
 - Electrically operated, outside, rearview mirror—right-hand (Park Avenue only)
 - Lighted door vanity mirrors
 - 2-speed windshield wiper with low-speed delay feature
 - Delco AM/FM stereo radio (std. on Park Avenue—delete option available)
 - Delco ETR AM/FM stereo radio
 - Delco B-track tape player and AM/FM stereo radio
 - Delco B-track tape player with ETR AM/FM stereo radio
 - Delco cassette tape player and AM/FM stereo radio
 - Delco CB and AM/FM stereo radio with Biband power antenna
 - Delco cassette tape player and Full-Feature AM/FM stereo radio
 - Delco Full-Feature AM/FM stereo radio
- Delco CB, B-track tape player and ETR AM/FM stereo radio with Biband power antenna
 - Delco cassette tape player and ETR AM/FM stereo radio
 - Delco B-track tape player and Full-Feature AM/FM stereo radio
 - Delco CB, cassette tape player and ETR AM/FM stereo radio
 - Delco Concert Sound Speaker System
 - Delco Extended Range speakers
 - Automatic power antenna (recommended with AM/FM radios)
 - Biband power antenna
 - Cruise-Master speed control with resume feature
 - Electric trunk release
 - Electric fuel cap lock
 - Electric trunk lock
 - Tilt steering wheel
 - Tilt and telescoping steering column
 - Langston halogen, high-beam headlamps
- Appearance and Protection**
- Coach lamps (std. on Park Avenue)
 - Door-edge guards
 - Chrome-plated road wheels (4)
 - Custom locking zinc wheel covers
 - Styled aluminum wheels (4)
 - Custom wheel covers (std. on Park Avenue)
 - Theft-deterrent system with starter interrupt
 - Front and rear carpet savers with inserts
 - Astroturf—electric sliding glass*
- *Headroom is reduced slightly with this option.

Ordering Guide

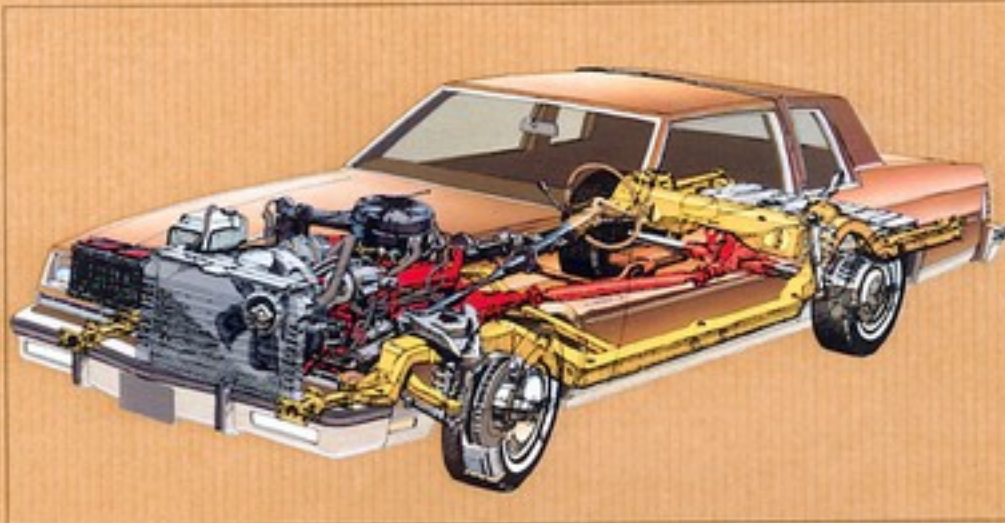
Model selected:

Engine choice:

Be sure to consider:

- Cruise-Master speed control with resume feature
- Electronic Touch Climate Control
- Illuminated door lock with interior light control
- Delco 6-speaker Concert Sound Speaker System
- Electric fuel cap lock
- Self-sealing tires

Additional selections:



Available Models

LeSabre Coupe	MS7
LeSabre Sedan	MS9
LeSabre Limited Coupe	F37
LeSabre Limited Sedan	FP9

Station Wagon shown on pages 62-63

Special Package

LeSabre T TYPE

Includes bucket seats, operating console, sport mirrors, sport steering wheel, color-coordinated seat and shoulder belts, black center pillar applique and Grain Touring suspension.

LeSabre Powertrains

Engine	Transmission
3.8 liter (231 CID) 2-90L V-6 (standard)	Automatic (standard)
4.1 liter (252 CID) 4-90L V-6 (available)	Automatic with overdrive (standard) Automatic (available)
5.0 liter (307 CID) 4-90L V-6 (available)*	Automatic with overdrive (standard) Automatic (available)
5.7 liter (350 CID) diesel V-8 (available)	Automatic (standard)

*Please refer to the powertrain engine chart on the next page for more information on this engine.

*Includes CCC. A delete CCC option is available except in California.

Dimensions

Item (inches)	Coupe	Sedan
Wheelbase	2,846 (115.9)	2,846 (115.9)
Overall length	4,579 (181.8)	4,579 (181.8)
Overall width	1,541 (60.7)	1,541 (60.7)
Overall height	5,547 (218.4)	5,547 (218.4)
Front overhang	1,938 (76.9)	1,938 (76.9)
Rear overhang	1,287 (50.9)	1,287 (50.9)
Front interior		
Head room	983 (39.1)	1,063 (41.8)
Leg room	1,073 (42.2)	1,073 (42.2)
Shoulder room	1,538 (60.9)	1,538 (60.9)
Hip room	1,394 (55.0)	1,394 (55.0)
Rear interior		
Head room	914 (36.0)	974 (38.3)
Leg room	919 (36.3)	991 (39.0)
Shoulder room	1,487 (59.0)	1,508 (59.5)
Hip room	1,475 (58.5)	1,485 (58.5)
Trunk capacity, liters (cu. ft.)	149 (5.3)	167 (5.9)
Fuel tank capacity, liter (gal.)		
Gasoline engines	91 (23.9)	95 (25.0)
V-8 diesel engine	102 (27.0)	102 (27.0)

Standard Equipment

Engine/Chassis

- 3.8 liter (231 CID) 2-90L V-6 engine
- Computer Command Control (delete option available on 5.0 liter V-8 engine except in California)
- Delco Freedom II Battery
- Power steering
- Power front disc/rear drum brakes
- Steel belted, radial ply tires — P205/79R15

- Low-rolling resistance tires
- Compact spare tire
- Coil-spring suspension — front and rear
- Side-impact jack
- Computer-selected chassis springs
- Low-drag brakes

Comfort and Convenience

- Choice of cloth or vinyl notched-back seat (LeSabre Coupe and Sedan)

- Choice of Limited-level cloth or vinyl notched-back seats (limited)
- Lights, front- and rear-door-operated dome, under-dash courtesy, front ashtray, glove compartment
- Windshield wiper system with single-wipe feature for misty conditions
- Combination turn signal and high/low beam headlight control
- Full-foam seat construction

Appearance and Protection

- Bumper protective strips — front and rear
- Bumper guards — front and rear
- Carpeting — front and rear
- Inside hood lock release
- Deluxe wheel covers
- Custom steering wheel
- Color-coordinated custom seat and shoulder belts (limited)
- Color-coordinated protective body-side moldings

Available Equipment

Engine

- California assembly line emission equipment and testing (required in California)
- Engine block heater
- Automatic transmission with overdrive
- 85-amp, Delcotron generator
- Heavy-duty battery
- Heavy-duty engine and transmission cooling

Chassis

- Limited-slip differential
- Automatic level control
- Firm ride-and-handling
- Grain Touring Suspension
- Steel-belted, radial ply, wide whitewall tires — P215/79R15
- Steel-belted, radial ply, wide whitewall tires — P205/79R15
- Self-sealing P215/79R14 tires

Interior

- 55/45 notched-back seats — cloth or vinyl (LeSabre)
- Bucket seats cloth or vinyl (LeSabre Coupe only — part of T TYPE option package)
- 55/45 notched-back seats — cloth or vinyl (limited)
- Gray power seat — driver's side, passenger side, driver and passenger side (55/45 seats required)
- Reclining manual seatback — passenger (bucket seats required)
- Reclining manual seatback — driver's (bucket seats required)
- Reclining electric seatback — passenger (NA, bucket seats)
- Reclining electric seatback — driver's (55/45 seats required)

Comfort and Convenience

- Air conditioner
- Automatic air conditioner
- Electronic Touch Climate Control air conditioner
- Full-length operating console (LeSabre Coupe)
- Electric dial clock
- Electric rear-window defogger
- Electric door locks
- Automatic electric door locks
- Soft-Ray tinted glass
- Trip odometer
- Lamp and Indicator Groups consisting of "Headlamps on" indicator, low fuel indicator, dome reading light, low washer fluid indicator and engine compartment light (low fuel indicator not included with diesel engine)
- Door courtesy and warning lights
- Cornering lights
- Front light monitor
- Remote-control, outside, rear-view mirrors — left-hand
- Remote-control, outside, rear-view mirrors — right-hand
- Remote-control, outside, rear-view mirror — left-hand with illuminated thermometer
- Remote-control, outside, rear-view sport mirrors — left- and right-hand

- ETR AM/FM stereo radio
- Delco-CLAM FM stereo radio with T-band power antenna
- Delco cassette tape player and ETR AM/FM stereo radio
- Delco rear dual speakers
- Delco Extended Range Speakers
- Automatic power antenna
- T-band power antenna
- Electric fuel cap lock
- Electric trunk release
- Cruise-Master speed control with resume feature
- Sport steering wheel
- Tilt steering wheel
- Tilt and telescoping steering column
- Power windows
- 2-speed windshield wiper with low-speed delay feature
- Xenogen halogen, high-beam headlamps

Appearance and Protection

- Color-coordinated custom front and rear seat belts and front shoulder belts (available LeSabre with standard notched-back trim)
- Front and rear carpet savers with inserts
- Trunk trim carpeting
- Illuminated door lock and interior light control
- Exterior molding package includes wide rocker panel, belt reveal moldings
- Designers' Accent Paint
- Long vinyl top
- Landau top (Coupe only)
- Electric sliding glass Astronoc®
- Theft-deterrent system with starter interrupt
- Body-side stripes
- Chrome-plated road wheels (4)
- Custom locking wire wheel covers
- Styled aluminum wheels (4)

*Headroom is reduced slightly with this option.

Ordering Guide

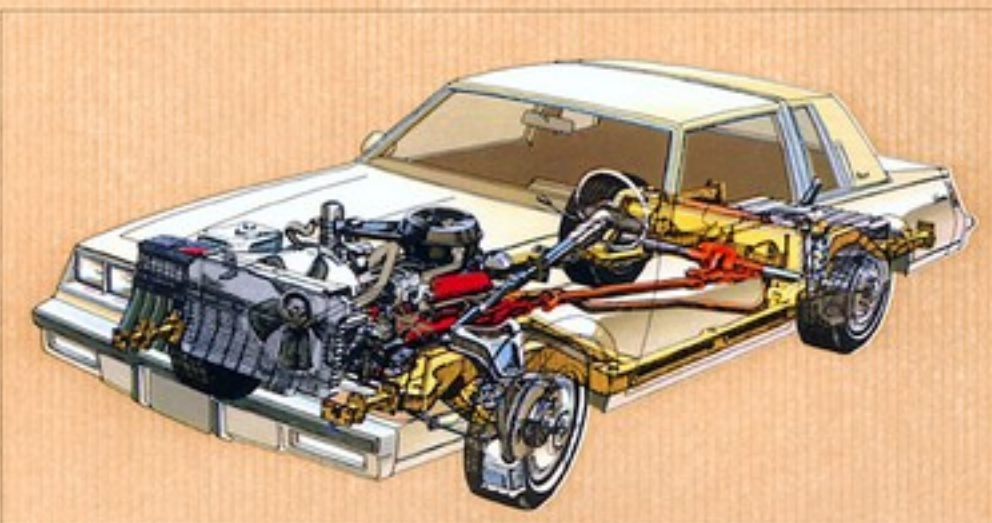
Model selected:

Engine choice:

Be sure to consider:

- Electronic Touch Climate Control
- Electric rear-window defogger
- Delco cassette tape player and AM/FM stereo Full-feature radio
- Theft-deterrent system with starter interrupt
- 5.7 liter (350 CID) diesel V-8 engine
- Designers' Accent Paint

Additional selections:



Available Models

Regal Coupe	447
Regal Sport Coupe	447
Regal Limited	447

Special Model and Packages

Regal Sport Coupe

Includes 3.8 liter (231 CID) 4-bbl. turbocharged V-6, sport mirrors, fast-ratio power steering, tungsten-halogen, high-beam headlamps, temperature gage and vacuum boost lights, steel-belted, radial-ply P205/70R14 tires and Gear Touring suspension.

Sport Coupe Decor Package (Y44)

Includes special Designers' Accent Paint, blacked-out grille, black headlamp trim and tail lamp trim, bright center rocker panel moldings, sport steering wheel and Turbine wheels (4).

Regal, Regal Limited Decor Package (Y52)

Includes special Designers' Accent Paint, Turbine wheels (4), sport mirrors and sport steering wheel.

Regal/Regal Limited/Regal Sport Coupe Powertrains

Engine	Transmission
Regal/Regal Limited	
3.8 liter (231 CID)	Automatic (Standard)
2.8-ltr. V-4 (Standard)	Automatic (Standard)
4.3 liter (265 CID)	Automatic (Standard)
2.8-ltr. V-4 (available)	Automatic (Standard)

Dimensions

mm (inches)	
Wheelbase	2,745 (108.1)
Track, front	1,486 (58.9)
Track, rear	1,447 (57.3)
Length	5,094 (200.4)
Width	1,818 (71.6)
Height	1,375 (54.1)

mm (inches)	
Head room	942 (37.1)
Leg room	1,056 (41.6)
Shoulder room	1,442 (56.8)
Hip room	1,313 (51.7)

mm (inches)	
Head room	947 (38.1)
Leg room	933 (36.8)
Shoulder room	1,420 (56.1)
Hip room	1,294 (50.9)
Trunk capacity, liters (cu. ft.)	441 (15.5)
Rear-hatch capacity, liters (cu. ft.)	49 (1.8)

Engine	Transmission
Regal Sport Coupe	
3.8 liter (231 CID)	Automatic (Standard)
4-bbl. turbocharged V-6 (Standard)	Automatic (Standard)

Please refer to the powertrain engine chart on the insert provided to your dealer with this catalog.

Standard Equipment

Engine/Chassis

- 3.8 liter (231 CID) 2-bbl. V-6 (Regal, Limited)
- 3.8 liter (231 CID) 4-bbl. turbocharged V-6 (Sport Coupe)
- High-energy ignition
- Automatic transmission
- Temperature gage and vacuum boost lights (Sport Coupe)
- Tungsten-halogen, high-beam headlamps (Sport Coupe)
- Computer Command Control
- Delco Freedom II Battery
- Fast-ratio power steering (Sport Coupe)

- Power steering (Regal, Limited)
- Power front disc/rear drum brakes
- Coil-spring suspension—front and rear
- Computer-selected chassis springs
- Low-rolling-resistance tires
- Steel-belted, radial-ply tires—P205/70R14 (Regal, Limited)
- Steel-belted, radial-ply tires—P205/70R14 (Sport Coupe)
- Side-impact jack
- Gear Touring suspension (Sport Coupe)

Comfort and Convenience

- Choice of vinyl or cloth notchback seat (Regal, Sport Coupe)
- Cloth 55/45 notchback seat (Limited)
- Full-burn seat construction
- Right- and left-hand, outside, rear-view chrome mirrors (Regal, Limited)
- Right-hand manual and left-hand remote sport mirrors (Sport Coupe)
- Lights front ashtray, under-dash courtesy, engine compartment, door-operated dome, glove compartment

- Plastic windshield washer system
- Compact spare tire
- Combination turn signal and high/low beam headlight control
- Bin-type glove box with coin holder
- Front and rear ashtrays

Appearance and Protection

- Bumper protective strips—front and rear
- Bumper guards—front and rear
- Carpeting—front and rear
- Inside hood lock release
- Custom steering wheel

Available Equipment

Engine

- California assembly line emission equipment and testing (required in California)
- Engine block heater
- 16-amp. Delcotron generator
- Heavy-duty battery
- Heavy-duty engine and transmission cooling

Chassis

- Limited-slip differential
- Firm ride-and-handling suspension (Regal, Limited)
- Gear Touring suspension (std. on Sport Coupe)
- Automatic level control
- Steel-belted, radial-ply, whitewall tires—P205/70R14 (NA, on Sport Coupe)
- Steel-belted, radial-ply, wide-oval whitewall tires—P205/70R14
- Steel-belted, radial-ply wide-oval white belted lettered tires—P205/70R14
- Self-sealing P205/70R14 tires (Regal, Limited)
- Dual exhaust (Sport Coupe)
- Optional side ratio (Regal, Limited)

Interior

- 55/45 notchback seats—cloth (Regal, Sport Coupe)
- Bucket seats—cloth or vinyl (Regal, Sport Coupe)
- 55/45 notchback seats—leather trimmed (Sport Coupe, Limited)
- 45/45 seats—cloth or leather trimmed (Sport Coupe, Limited)
- Manual reclining passenger seatback
- 6-way power seat—driver's side
- 6-way power seat—passenger side (55/45 seats required)
- 6-way power seat—driver and passenger (55/45 seats required)

Comfort and Convenience

- Air conditioner
- Automatic air conditioner
- Electric dial clock
- Electric digital clock
- Full-length operating console
- Storage console
- Electric rear-window defogger
- Electric door locks
- Automatic electric door locks
- Self-Ray tinted glass
- "Headlamps on" indicator
- Trip odometer
- Instrument gauges—temperature, trip odometer and voltmeter (NA, on Sport Coupe)
- Dome reading light
- Front light monitors
- Cornering lights
- Door courtesy and warning lights (Limited)
- Remote-control, outside, rear-view mirror—right-hand or left-hand (NA, Sport Coupe)

- Outside, rearview sport mirrors—left-hand remote, right-hand manual (std. on Sport Coupe)
- Outside, rearview sport mirrors—left- and right-hand remote
- Lighted visor vanity mirror
- Visor vanity mirrors
- Delco AM radio
- Delco AM/FM radio
- Delco AM/FM stereo radio
- Delco ETR AM/FM stereo radio
- Delco B-track tape player with AM/FM stereo radio
- Delco B-track tape player and ETR AM/FM stereo radio
- Delco cassette tape player with AM/FM stereo radio
- Delco cassette tape player and ETR AM/FM stereo radio
- Delco CB and AM/FM stereo radio with 10-band power antenna
- Delco rear dual speakers
- Delco Extended Range speakers

- Fixed mast antenna
- Automatic power antenna
- 10-band power antenna
- Electric trunk release
- Cruise-Master speed control with resume feature
- Sport steering wheel
- Tilt steering wheel
- Power windows
- 2-speed windshield wiper with low-speed delay feature
- Tungsten-halogen, high-beam headlamps (std. on Sport Coupe)

Appearance and Protection

- Color-coordinated custom front and rear seat belts and front shoulder belts (std. on Limited)
- Front and rear carpet savers with inserts
- Coach lamps
- Protective body-side moldings
- Door-edge guards
- Exterior mulling package includes wide rocker panel, and belt reseat moldings (std. Limited)
- Designers' Accent Paint
- Sport Decor Package (Sport Coupe only)
- Regal Decor Package (NA, on Sport Coupe)
- Landau top
- Heavily padded Landau top
- Silver astro-roof—sliding*
- Hatch roof
- Theft-deterrent system with starter interrupt
- Body-side stripes
- Styled aluminum wheels (4)
- Turbine wheels (4)
- Chrome-plated road wheels (4)
- Custom locking wire wheel covers

NA—Not available
*Headroom is reduced slightly with this option.

Ordering Guide

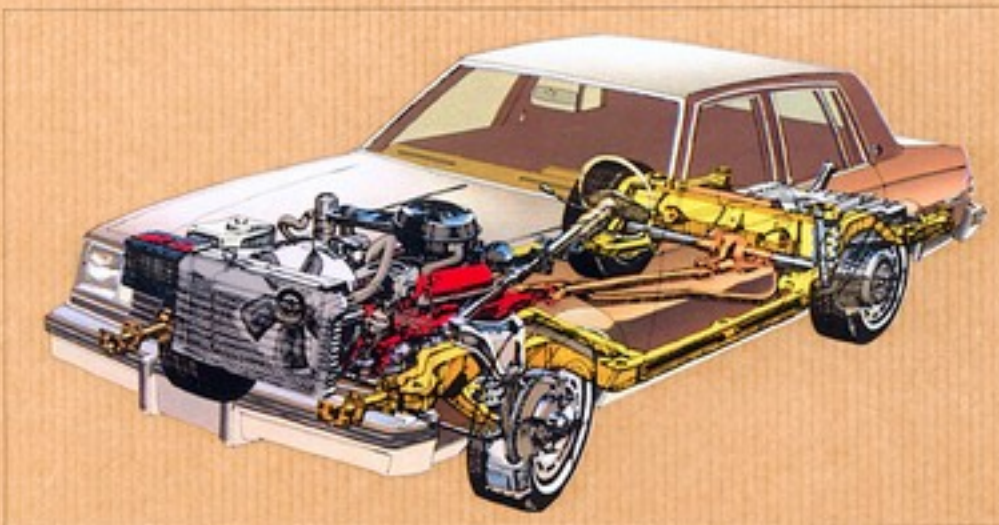
Model selected

Engine choice:

Be sure to consider:

- Automatic air conditioner
- 6-way power seat
- Cruise-Master speed control with resume feature
- Electric rear-window defogger
- Delco cassette tape player and ETR AM/FM stereo radio with digital readout and clock
- Tungsten-halogen, high-beam headlamps (std. Sport Coupe)
- Styled aluminum wheels (4)
- Hatch roof
- Leather trimmed seats (available on Sport Coupe and Limited)

Additional selections:



Available Models

Century Sedan	HP
Century Limited Sedan	LT

Station Wagons on Pages 64-65

Century Powertrains

Engines	Transmission
3.8 liter (231 CID) 2-861, V-4 (standard)	3-speed Manual (standard Century Sedan— not available in California) Automatic (standard Century Limited— available Century Sedan)
4.3 liter (265 CID) 2-861, V-4 (available)	Automatic (standard Century Limited— available Century Sedan)

Please refer to the powertrain engine chart on the sheet provided to your dealer with this catalog.

Dimensions

size (inches)	
Wheelbase	2,745 (108.1)
Track, front	5,486 (158.3)
Track, rear	5,487 (157.8)
Length	4,878 (194.8)
Width	5,814 (231.3)
Height	5,410 (213.0)
Front Inboard	
Head room	983 (38.7)
Leg room	5,086 (142.8)
Shoulder room	4,454 (157.3)
Hip room	5,338 (210.2)
Rear Inboard	
Head room	957 (37.7)
Leg room	965 (38.2)
Shoulder room	4,488 (157.5)
Hip room	4,412 (154.8)
Trunk capacity, from 1st fl.	465 (16.2)
Full load capacity, from 1st fl.	49 (1.8)

Standard Equipment

Engine/Chassis

- 3.8 liter (231, CID) V-4
- High-Energy Ignition
- Computer Command Control
- Delco Freedom II Battery
- Power steering
- Manual 3-speed transmission (Century)
- Automatic transmission (Limited)
- Power—front disc/rear drum brakes
- Forward-mounted steering gear and linkage

- Full perimeter frame
- Computer-selected chassis springs
- Coil spring suspension—front and rear
- Fiberglass-belted, radial ply tires—P195/75R14
- Low-rolling resistance tires
- Extensive corrosion protection (Limited)
- Compact spare tire
- Side-impact jack

Comfort and Convenience

- Full foam seat construction

- Choice of cloth or vinyl notchback seats (Century)
- Cloth 55/45 notchback seats (Limited)
- Blade windshield wiper system
- Lights—front- and rear-door-operated dome (Century); front- and rear-door-operated dome, trunk (Limited)
- Bin-type glove box with coin holder
- Combination turn signal and high/low beam headlight control
- Rear-door armrest

- Cigarette lighter
- Front and rear ashtrays

Appearance and Protection

- Bumper protective strips—front and rear
- Rear bumper guards
- Cut-plate carpeting—front and rear
- Depressed park windshield wipers
- Inside hood lock release
- Instrument panel designed for easy serviceability
- Rectangular headlamps

Available Equipment

Engine

- California assembly line emission equipment and testing (required in California)
- Engine block heater
- 85-amp Delcotron generator
- Heavy-duty battery
- Heavy-duty engine and transmission cooling

Chassis

- Optional axle ratio
- Automatic transmission (Century)
- Limited-slip differential
- Firm ride-and-handling suspension
- Gear Torsion suspension
- Automatic level control
- Fiberglass-belted, radial ply whitewall tires—P195/75R14
- Fiberglass-belted, radial ply blackwall tires—P195/75R14
- Fiberglass-belted, radial ply whitewall tires—P195/75R14
- Steel belted, radial ply blackwall tires—P195/75R14
- Steel belted, radial ply wide-oval white billboard lettered tires—P195/70R14
- Self-sealing P195/75R14 tires

Interior

- Bench seat—cloth or cloth front/vinyl rear (cloth option—Century)
- 55/45 notchback seats—cloth (Century)
- Bucket seats—cloth or vinyl (Century)
- G-way power seat—driver's side, passenger side, driver and passenger sides

Comfort and Convenience

- Air conditioner
- Automatic air conditioner

- Electric dial clock
- Electric digital clock
- Full-length operating console (bucket seats and automatic transmission required)
- Electric rear-window defogger
- Electric door locks
- Automatic electric door locks
- Soft-Ray tinted windshield
- "Headlamps on" indicator
- Trip odometer
- Instrument gauges—temperature, trip odometer and voltmeter
- Dome reading light
- Front light monitors
- Engine compartment light
- Door courtesy and warning lights (Limited)

- Remote-control, outside, rear-view mirror—left hand
- Remote-control, outside, rear-view mirror—right hand
- Outside, rearview spot mirrors—left hand remote, right hand manual or remote
- Lighted visor vanity mirror—passenger side
- Visor vanity mirrors
- Delco AM radio
- Delco AM/FM radio
- Delco AM/FM stereo radio
- Delco 8-track AM/FM stereo radio
- Delco 8-track tape player with AM/FM stereo radio
- Delco 8-track tape player and 8-track AM/FM stereo radio
- Delco cassette tape player and AM/FM stereo radio
- Delco cassette tape player and 8-track AM/FM stereo radio
- Delco CB with AM/FM stereo radio and Triband power antenna
- Delco rear dual speakers
- Delco Extended Range speakers
- Windshield antenna
- Automatic power antenna
- Fixed mast antenna

- Triband power antenna
- Electric trunk release
- Cruise-Master speed control with resume feature
- Custom steering wheel (std. on Limited)
- Tilt steering wheel
- Sport steering wheel
- Power windows (includes power rear vent)
- Power windows (front doors only)
- 2-speed windshield wiper with low-speed delay feature
- Tungsten-halogen, high-beam headlamps

Appearance and Protection

- Color-coordinated custom front and rear seat belts and front shoulder belts (std. on Limited and with 55/45 or bucket seats)
- Carpet savers and handle mats
- Front carpet savers
- Front and rear carpet savers with inserts
- Trunk trim carpeting
- Bumper guards—front
- Door-edge guards
- Rocker panel moldings (USA Limited)
- Wheel opening moldings (std. Limited)
- Protective body-side moldings
- Exterior moldings package includes belt reveal moldings, wide rocker moldings (std. Limited)
- Whipsawed body-side molding
- Designer's Accent Paint
- Long vinyl top
- Long padded vinyl top
- Theft-deterrent system with starter interrupt
- Body-side stripes
- Chrome-plated road wheels (4)
- Deluxe wheel covers
- Custom locking wire wheel covers
- Stylod aluminum wheels (4)
- Turbine wheels (4)

Ordering Guide

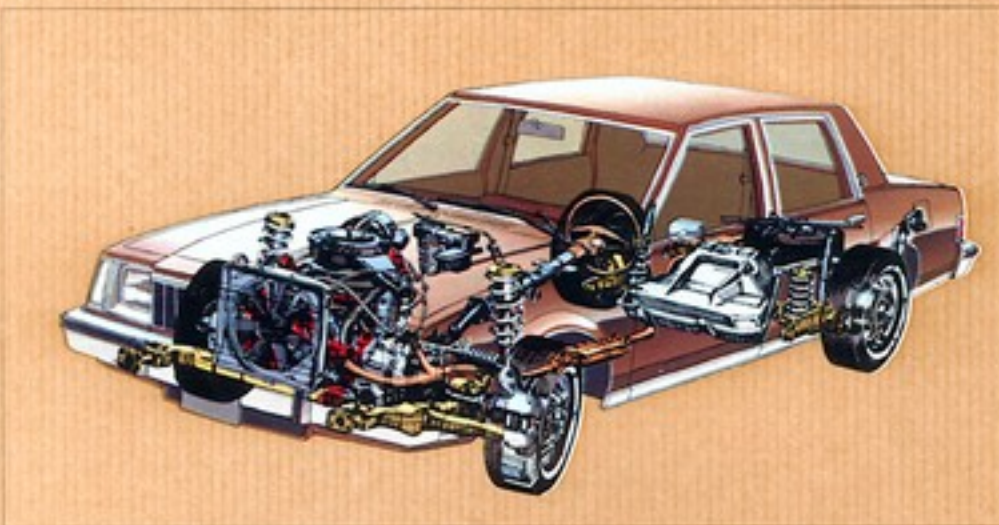
Model selected:

Engine/transmission choice:

Be sure to consider:

- Automatic air conditioner
- Tilt steering column
- Electric rear-window defogger
- Delco 8-track AM/FM stereo radio
- Tungsten-halogen, high-beam headlamps
- Gear Torsion suspension

Additional selections:



Available Models

Skylark Coupe	837
Skylark Sedan	849
Skylark Sport Coupe	837
Skylark Sport Sedan	849
Skylark Limited Coupe	837
Skylark Limited Sedan	849

Special Models

Sport Coupe and Sport Sedan

Includes special styled grille and front-end appearance, black moldings, wheel opening moldings, front and rear bumper steps, smoked lenses on tail lamps. Sport steering wheel, sport mirrors, amber front park and turn lamps, Rallye ride-and-handling suspension, larger rear track bar, black instrument panel treatment, voltmeter, temperature gage and trip odometer, and P205/70R13 steel-belted, radial-ply blackwall tires.

Skylark/Skylark Sport/Skylark Limited Powertrains

Engines	Transmission
2.5 liter (151 CID) L-4 engine	4-speed Manual (standard)
2.6L, 14 (standard)	Automatic (available)
2.8 liter (173 CID)	4-speed Manual (standard)
2.6L, V-6 (available)	Automatic (available)

Please refer to the powertrain engine chart on the insert provided to your dealer with this catalog.

Dimensions

	Coupe	Sedan
Wheelbase	2,644 (104.9)	2,644 (104.9)
Track, front	1,492 (59.7)	1,492 (59.7)
Track, rear	1,447 (58.9)	1,447 (58.9)
Length	4,599 (181.1)	4,599 (181.1)
Width	1,756 (69.1)	1,790 (70.5)
Height	1,359 (53.5)	1,359 (53.5)
Front Inboard		
Wheel room	970 (38.2)	970 (38.2)
Lug room	1,073 (42.2)	1,073 (42.2)
Shoulder room	1,414 (55.7)	1,414 (55.7)
Hip room	1,385 (54.5)	1,385 (54.5)
Rear Inboard		
Wheel room	951 (37.4)	951 (37.4)
Lug room	876 (34.4)	902 (35.5)
Shoulder room	1,431 (56.3)	1,414 (55.5)
Hip room	1,360 (53.5)	1,406 (55.3)
Trunk capacity, liters (cu. ft.)	467 (16.5)	467 (16.5)
Pass. load capacity, lbs (kg.)	53 (24.0)	53 (24.0)

Standard Equipment

Engine/Chassis

- 2.5 liter (151 CID) L-4 engine
- Computer Controlled Control
- Delco Freedom II Battery
- Manual 4-speed transmission—floor-mounted shift
- Manual steering
- Manual brakes with front disc/rear drums
- MacPherson strut front suspension
- Rallye ride-and-handling suspension (Sport Models)
- Fiberglass-belted, radial-ply tires—P185/80R13 (Skylark, Limited)
- Steel-belted, radial-ply tires—P205/70R13 (Sport Models)
- Compact spare tire

- Transverse-mounted engine
- Rack-and-pinion steering
- Front-wheel drive
- Low-drag brakes

Comfort and Convenience

- Choice of cloth or vinyl notchback seat (Skylark, Sport)
- Choice of Limited-level cloth or vinyl notchback seat (Limited)
- Floor-mount antenna
- Delco AM radio with dual front speakers—delete radio option available
- Voltmeter, temperature gage and trip odometer (Sport Models)
- Front storage console standard with notchback trim

- Wet-arm windshield washer
- Instrument panel floodlights (Limited)
- Acoustical insulation package (Limited)
- Lights, dome (Skylark, Sport Models), dome, engine, glove box, ashtray, trunk, instrument panel food and courtesy (Limited)
- Door courtesy and warning lights (Limited)

Appearance and Protection

- Black instrument panel (Sport Models)
- Deluxe steering wheel (Skylark, Limited)
- Cut-pile carpeting—front and rear

- Special sport steering wheel (Sport Models)
- Stand-up hood ornament and windshield molding (Limited)
- Roof drip, windshield and rear-window reveal, door and window frame moldings
- Belt reeling and wide rocker molding (Limited)
- Wheel opening moldings (Sport Models, Limited)
- Deluxe wheel covers (Limited)
- Designers' sport wheels (4) (Sport Models)
- Inside hood lock release
- Bumper protective strips (Sport Models)
- Rear bumper guards

Available Equipment

Engine

- California assembly line emission equipment and testing (required in California)
- 85-amp. Delcotron generator
- Heavy-duty battery
- Heavy-duty engine and transmission cooling

Chassis

- Automatic transmission
- Power steering
- Power front disc brakes
- Rallye ride-and-handling suspension (std. on Sport Models)
- Firm ride-and-handling (NA, on Sport Models)
- Fiberglass-belted, radial-ply whitewall tires—P185/80R13
- Steel-belted, radial-ply, wide whitewall tires—P185/80R13 (NA, on Sport Models)
- Steel-belted, radial-ply, wide whitewall tires—P205/70R13 (Sport Models)
- Steel-belted, radial-ply, white lettered tires—P205/70R13 (Sport Models only)
- Self-sealing P185/80R13 tires (NA, on Sport Models)
- Superlift rear shock absorbers

Interior

- Notchback seats, Limited cloth or vinyl (Sport Models)
- Bucket seats—cloth or vinyl (Skylark, Sport Models)
- Bucket seats—Limited level cloth (Limited and Sport Models)
- Bucket seats—leather trimmed (Limited and Sport Models)
- 6-way power seat—driver's side
- Manual seatback recliner—passenger side
- Air conditioner
- Electric dial clock
- Electric digital clock
- Full-length opening console
- Bumper-hologram, high-beam headlamps
- Electric rear-window defogger
- Electric door locks
- Soft Ray tinted glass
- Instrument gages and trip odometer (std. on Sport Models)
- Trip odometer
- Lamp group includes "Head lamps on" indicator, engine compartment, glove compartment, ashtray, courtesy and trunk lights (rear door/amb. switch included on sedan models)
- Remote-control, outside, rearview mirror—left hand (NA, on Sport Models)
- Remote-control, outside, sport mirrors—left hand remote, right hand manual (std. on Sport Models)
- Remote-control, outside sport mirrors—left and right-hand remote
- Visor vanity mirrors
- Lighted visor vanity mirror
- Delco AM/FM radio
- Delco AM/FM stereo radio
- Delco cassette tape player and AM/FM stereo radio
- Delco cassette tape player and AM/FM stereo radio
- Delco CB and AM/FM stereo radio
- Delco CB, 8-track tape player and AM/FM stereo radio
- Delco CB, cassette tape player and AM/FM stereo radio
- Delete radio option
- Delco graphic equalizer booster
- Delco Extended Range speakers
- Power antenna

- Tilt-and-power antenna
- Electric trunk release
- Cruise-Master speed control with resume feature
- Tilt steering wheel
- Sport steering wheel (std. on Sport Models)
- 2-speed windshield wipers with low-speed delay feature

Appearance and Protection

- Color-coordinated custom front and rear seat belts and front shoulder belts (std. on Limited and on Sport Models with Limited trim)
- Bumper guards—front and rear
- Bumper protective strips—front and rear (std. on Sport Models)
- Coach lamps (Limited)
- Protective body-side moldings
- Wheel opening moldings (std. on Limited & Sport Models)
- Wide rocker, rear-quarter lower moldings (std. on Limited—NA, on Sport Models)
- Hood ornament and windshield molding (std. on Limited—NA, on Sport Models)
- Designers' Accent Paint (NA, Sport Models)
- Carpet savers and hand mats
- Flip-open, Vista-Vent, removable glass sunroof
- Heavily padded Landau top (Coupes only)
- Body-side stripes
- Sport strips (Sport Models only)
- Deluxe wheel covers (std. on Limited—NA, on Sport Models)
- Sport wheel covers (NA, on Sport Models)
- Custom locking wire wheel covers (NA, on Sport Models)
- Chrome-plated road wheels (4)

Ordering Guide

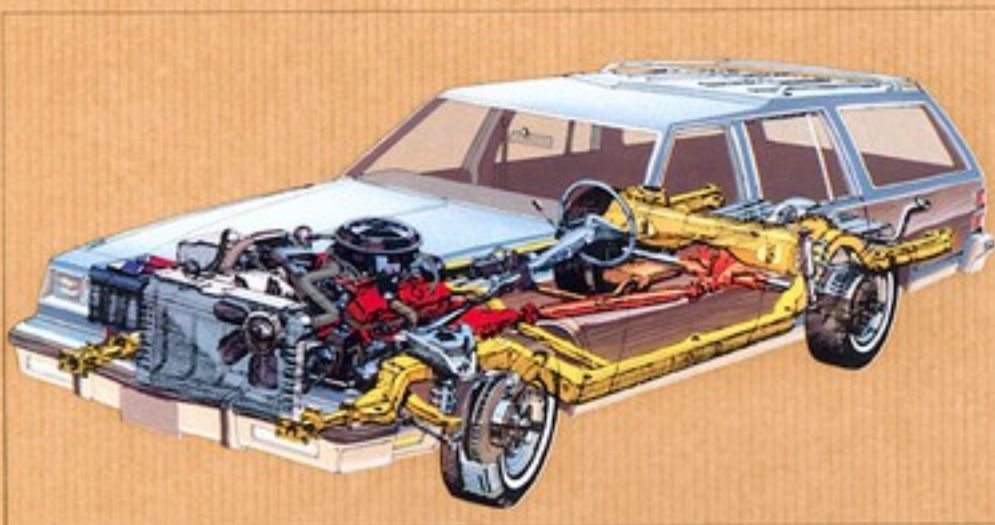
Model selected:

Engine/transmission choice:

Be sure to consider:

- Automatic transmission
- Power steering
- Power brakes
- Cruise-Master speed control with resume feature
- Tilt steering column
- Electric rear-window defogger
- Protective body-side moldings
- Electric dial or digital clock
- Delco AM/FM stereo radio
- Flip-open, Vista-Vent glass sunroof
- Electric door locks

Additional selections:



Available Models

LeSabre

LeSabre Estate Wagon—2 seat	ES5
LeSabre Estate Wagon—3 seat	AE4 option

Electra

Electra Estate Wagon—2 seat	ES5
Electra Estate Wagon—3 seat	AE4 option

LeSabre/Electra Estate Wagon Powertrains

Engines	Transmission
LeSabre Estate Wagon	
5.0 liter (307 CID) 4-861, V-8 (standard)	Automatic with overdrive (standard)
5.7 liter (350 CID) diesel V-8 (available)	Automatic (standard)
Electra Estate Wagon	
5.0 liter (307 CID) 4-861, V-8 (standard)	Automatic with overdrive (standard)
5.7 liter (350 CID) diesel V-8 (available)	Automatic (standard)

Please refer to the powertrain engine chart on the insert provided to your dealer with this catalog.

Dimensions

mm (inches)	
Wheelbase	2,743 (107.9)
Track, front	1,580 (62.2)
Track, rear	1,626 (64.0)
Length	5,400 (212.6)
Width	2,014 (79.3)
Height	1,481 (57.1)
Front Inboard	
Head room	1,005 (39.4)
Leg room	1,071 (42.1)
Shoulder room	1,324 (52.1)
Hip room	1,400 (55.1)
Rear Inboard	
Head room	999 (39.3)
Leg room	959 (37.8)
Shoulder room	1,349 (53.1)
Hip room	1,398 (55.0)
Charge capacity, liters (cu ft.)	2,488 (87.9)
Fuel tank capacity, liters (gal.)	63.3 (16.8)

Standard Equipment

Engine/Chassis

- 5.0 liter (307 CID) 4-bbl. V-8
- Computer Command Control
- Automatic transmission with overdrive (gas engine)
- Automatic transmission (diesel engine)
- Power steering
- Power front disc/rear drum brakes
- Steel belted, radial-ply whitewall tires—P225/75R15
- Low-rolling resistance tires
- Coil-spring suspension—front and rear
- Delco Freedom II Battery
- Forward mounted steering gear and linkage
- Computer-selected chassis springs
- Side-impact jack

- High Energy Ignition
- Compact spare tire

Comfort and Convenience

- Cloth or vinyl, or cloth front/vinyl rear notchback seats (LeSabre)
- Cloth or vinyl, or cloth front/vinyl rear 55/45 notchback seats (Electra)
- Full-foam seat construction
- Air conditioner (Electra)
- Windshield wiper system with single-wipe feature for misty conditions
- Quartz-crystal-controlled digital clock (Electra)
- Lights: front- and rear-door-operated dome, front ashtray, glove compartment, under-dash courtesy, glove box, front ashtray, dome reading (Electra)

- Combination turn signal and high/low beam headlamp control
- Power windows (Electra)
- Power tailgate window, roof rack and air deflector (Electra)
- Lockable storage compartment
- Right- and left-hand chrome, outside, rearview mirrors
- Remote-control tailgate lock (Electra)
- Electric door locks (Electra)
- Tilt steering column (Electra)
- Front and rear armrests
- Two-way tailgate
- Rear compartment courtesy light
- Extensive acoustic insulation (Electra)

Appearance and Protection

- Bumper protective strips—front and rear

- Bumper guards—front and rear
- Deluxe wheel covers (LeSabre)
- Chrome-plated road wheels (4) (Electra)
- "Tailgate ajar" indicator light
- Load floor carpet
- Anti-rust protection
- Color-coordinated custom front and rear seat belts (Electra)
- Woodgrain vinyl applique (Electra)
- Cut pile carpeting—front and rear
- Tailgate window seal moldings
- Rocker panel moldings
- Depressed-park windshield wipers
- Inside hood lock release
- Custom steering wheel
- Wheel opening moldings
- Door and window frame moldings
- Belt seal moldings (Electra)

Available Equipment

Engines

- California assembly line emission equipment and testing (required in California)
- Engine block heater
- 85-amp. Delcotron generator
- Heavy-duty battery
- Heavy-duty engine and transmission cooling

Chassis

- Limited-slip differential
- Automatic level control
- Firm ride-and-handling suspension (recommended for trailer towing)
- Self-sealing P225/75R15 tires

Interior

- Cloth or vinyl, or cloth front/vinyl rear 55/45 notchback seats (LeSabre)
- Vinyl third seat
- 6-way power seats

Comfort and Convenience

- Air conditioner (LeSabre)
- Electronic Touch Climate Control
- Automatic air conditioner
- Twilight Sentinel headlamp control (Electra)
- Cruise-Master speed control with resume feature
- Tilt steering column (LeSabre)
- Tilt and telescoping steering column
- Electric door locks (LeSabre)
- Automatic electric door locks
- Remote-control tailgate lock (LeSabre)
- Power windows (LeSabre)

- Soft-Ray tinted glass
- Reclining passenger and/or driver seatback
- "Headlamps on" indicator
- Trip odometer
- Low fuel indicator
- Engine compartment light
- Low windshield washer fluid warning light
- Front light monitors
- Door courtesy and warning lights
- Lighted visor vanity mirrors
- Tungsten halogen, high-beam headlamps
- Cosmeting lights
- Quartz-crystal-controlled dial clock (LeSabre)
- 2-speed windshield wiper with low-speed delay feature
- Adjustable roof rack and air deflector (LeSabre)
- Remote-control, outside, rearview mirrors
- Outside, rearview sport mirrors—left- and right-hand remote
- Illuminated door lock and interior light control
- Delco AM radio (LeSabre)
- Delco AM/FM stereo radio
- Delco 8-track tape player with AM/FM stereo radio
- Delco ETR AM/FM stereo radio
- Delco 8-track tape player with ETR AM/FM stereo radio
- Delco Full-feature AM/FM stereo radio
- Delco cassette tape player with AM/FM stereo radio
- Delco cassette tape player with

- ETR AM/FM stereo radio
- Delco cassette tape player with Full-feature AM/FM stereo radio
- Delco 8-track tape player with Full-feature AM/FM stereo radio
- Delco CR and AM/FM stereo radio with Tri-band power antenna
- Delco CR, 8-track tape player and ETR AM/FM stereo radio (Electra)
- Delco CR cassette tape player and ETR AM/FM stereo radio (Electra)
- Windshield antenna
- Delco rear dual speakers (included with stereo radios)
- Automatic power antenna
- Tri-band power antenna
- Electric rear window defogger
- Electrically controlled mirrors—left- and right-hand remote
- Electrically controlled mirrors with left illuminated thermometer (left- and right-hand remote)
- Sport steering wheel (LeSabre)

Appearance and Protection

- Carpet savers and hand mats
- Front and rear carpet savers with inserts
- Front carpet savers with inserts (Electra)
- Color-coordinated custom front and rear seat belts (LeSabre)
- Door-edge guards
- Protective body-side moldings
- Custom wire wheel covers with locks (LeSabre)
- Woodgrain vinyl applique (LeSabre)
- Chrome-plated road wheels (4) (LeSabre)
- Styled aluminum wheels (4)

Ordering Guide

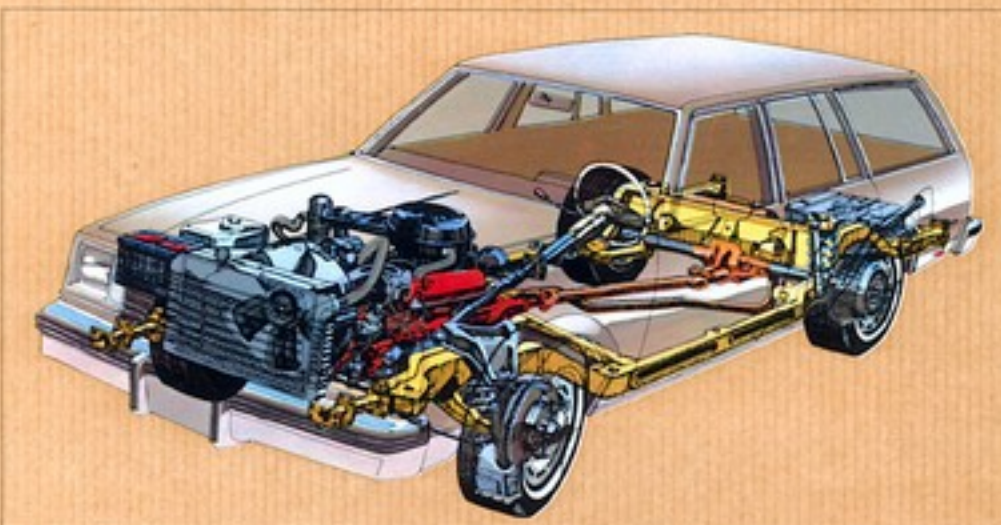
Model selected:

Engine choice:

Be sure to consider:

- Automatic level control
- 6-way power seat
- Electronic Touch Climate control
- Cruise-Master speed control with resume feature
- Tilt and telescoping steering column
- Reclining passenger and/or driver seatback
- Styled aluminum wheels (4)
- Delco AM/FM stereo Full-feature radio
- Tungsten halogen, high-beam headlamps
- Trip odometer
- Lighted visor vanity mirror
- Illuminated door lock and interior light control

Additional selections:



Available Models

Century Station Wagon	E35
Century Estate Wagon	H35

Century Station Wagon/Century Estate Wagon Powertrains

Engines	Transmission
3.8 liter (231 CID)	Automatic (standard)
2.58L V-4 (standard)	Automatic (optional)
4.2 liter (265 CID)	Automatic (standard)
2.58L V-4 (optional)	Automatic (optional)

Please refer to the powertrain engine chart on the next page for more information on this charting.

Dimensions

mm (inches)	
Wheelbase	2,749 (108.1)
Track, front	1,484 (58.3)
Track, rear	1,487 (57.8)
Length	4,396 (172.7)
Width	1,809 (71.2)
Height	1,474 (57.7)
Front Inflation	
Head room	979 (38.5)
Leg room	1,086 (42.8)
Shoulder room	1,454 (57.2)
Hip room	1,324 (52.1)
Rear Inflation	
Head room	979 (38.5)
Leg room	912 (35.9)
Shoulder room	1,450 (57.1)
Hip room	1,412 (55.6)
Cargo capacity, lbs. (kg.)	2,853 (128.8)
Fuel tank capacity, (gal.)	49 (18.2)

Standard Equipment

Engine/Chassis

- 3.8 liter (231 CID) 2-bbl. V-6
- High-Energy Ignition
- Computer Command Control
- Power front disc/rear drum brakes
- Power steering
- Automatic transmission
- Coil-spring suspension
- Delco Freedom II Battery (maintenance-free)
- Forward-mounted steering gear and linkage
- Computer-selected chassis springs

Full-perimeter frame

- Fiberglass-belted, radial-ply tires—P195/75R14
- Low-rolling resistance tires
- Side-frame jack

Comfort and Convenience

- Vinyl bench seat or cloth front, vinyl rear interior trim (Century)
- All-cloth or cloth front notchback seat and vinyl rear seat or all-vinyl trim (Estate Wagon)
- Windshield wiper system with single-wipe feature for misty conditions

- Lift-up tailgate window and fold-down tailgate
- Plastic windshield washer system
- Lights: front-door-operated dome (Century), front ashtray, under-dash courtesy, front- and rear-door-operated dome, glove compartment (Estate Wagon)
- Tailgate follower board (Estate Wagon)
- Full-foam seat construction
- Front- and rear-door armrests
- Compact spare tire
- Combination turn signal and high/low beam headlight control

- Rear storage compartments
- Bin-type glove box with coin holder

Appearance and Protection

- Bumper protective strips
- Rear bumper guards
- Depressed park windshield wipers
- Inside hood lock release
- Deluxe steering wheel
- Load-floor area carpet (Estate Wagon)
- Extensive anti-corrosion protection

Available Equipment

Engine

- California assembly line emission equipment and testing (required in California)
- Engine block heater
- 85-amp. Delcotron generator
- Heavy-duty battery
- Heavy-duty engine and transmission cooling

Chassis

- Limited-slip differential
- Automatic level control
- Firm ride-and-handling suspension
- Fiberglass-belted, radial-ply whitewall tires—P195/75R14
- Steel-belted, radial-ply blackwall tires—P195/75R14
- Steel-belted, radial-ply whitewall tires—P195/75R14
- Steel-belted, radial-ply, wide-oval white billboard lettered tires—P195/75R14
- Self-sealing P195/75R14 tires

Interior

- 55/45 notchback seats—cloth or cloth with vinyl (Estate Wagon)
- Bucket seats—cloth, vinyl, or cloth with vinyl (Estate Wagon)
- 6-way power seat—driver's side (55/45 seats required)
- 6-way power seat—passenger side (55/45 seats required)
- 6-way power seat—driver and passenger (55/45 seat required) (Estate Wagon)

Comfort and Convenience

- Air conditioner
- Automatic air conditioner
- Electric dial clock
- Electric digital clock
- Full-length operating console (bucket seats required)
- Electric rear window defogger
- Electric door locks

- Remote tailgate lock
- Soft-Ray tinted glass
- Soft-Ray tinted windshield
- "Headlamps on" indicator
- Trip odometer
- Instrument gauges—temperature, trip odometer and voltmeter
- Dorse reading light
- Front light monitors
- Engine compartment light
- Remote-control, outside, rearview mirror—left hand
- Remote-control, outside, rearview mirror—right hand
- Outside, rearview sport mirrors—left hand remote, right hand manual
- Outside, rearview sport mirrors—left- and right hand remote
- Lighted visor vanity mirror—passenger side
- Unlighted visor vanity mirrors (2)
- Delco AM radio
- Delco AM/FM radio
- Delco AM/FM stereo radio
- Delco 8-track tape player with AM/FM stereo radio
- Delco 8-track tape player with ETR AM/FM stereo radio
- Delco cassette tape player with AM/FM stereo radio
- Delco cassette tape player with ETR AM/FM stereo radio
- Delco CB with AM/FM stereo radio and Tri-band power antenna
- Delco seat dual speakers
- Windshield antenna
- Automatic power antenna
- Fixed mast antenna
- Automatic Tri-band power antenna

- Custom steering wheel
- Sport steering wheel
- Power windows (includes rear vent window)
- Power windows (front doors, only)
- 2-speed windshield wiper with low-speed delay
- Tangleton-halogen, high-beam headlamps

Appearance and Protection

- Color-coordinated custom front and rear seat belts and front shoulder belts (std. with 55/45 seats or bucket seats)
- Front carpet savers
- Carpet savers and hand mats
- Front and rear carpet savers with inserts
- Load floor area carpet (std. on Estate Wagon)
- Door-edge guards
- Protective body-side moldings
- Bodier panel moldings (Century)
- Woodgrain vinyl applique
- Wheel opening moldings (Century)
- Exterior molding package includes bright window scallop moldings and door and window frame black paint treatment (Century)
- Exterior molding package includes wide rocker panel and belt reveal molding
- Designers' Accent Paint
- Tailgate follower board (std. on Estate Wagon)
- Body-side stripes
- Chrome-plated road wheels (4)
- Deluxe wheel covers
- Custom locking wire wheel covers
- Styled aluminum wheels (4)
- Turbine wheels (4)

Ordering Guide

Model selected:

Engine choice:

Be sure to consider:

- Automatic level control
- Automatic air conditioner
- Cruise-Master speed control with resume feature
- Tilt steering column
- Power windows
- Adjustable roof rack
- Delco CB and AM/FM stereo radio with Tri-band power antenna
- Protective body-side moldings
- Styled aluminum wheels (4)
- Tangleton-halogen, high-beam headlamps

Additional selections:

Perhaps you're getting close to a buying decision. You may have narrowed down your choice to two Buick series. Now, you'd like to make some quick comparisons of standard and available features in the two series. We've prepared this special standard/available equipment chart for your handy use. You'll find a listing of important standard features as well as a list of many popular Buick options. This chart can help you recap your thoughts. As you probably know, a well-equipped car not only enhances your driving pleasure, it is often more desirable at trade-in time, with subsequent economic benefits to you. So please read on, and enjoy your 1981 Buick.

Comparisons made easy

	Exquisite	Courtesy	Regal	LeSabre	Electra	Wildcat
Chassis						
Operating console	A	A	A	A	A	A
Power brakes	A	S	S	S	S	S
Power steering	A	S	S	S	S	S
Buick side-vent handling package	A ¹⁾					
Close Touring Suspension		A	A ²⁾	A ²⁾	S ³⁾	
Four-ride-and-handling package	A	A	A	A	A	A
Automatic level control		A	A	A	A	S
Limited-slip differential		A	A	A	A	A
Heavy-duty engine and transmission coating	A	A	A	A	A	A
Heavy-duty battery	A	A	A	A	A	A
Engine block heater	A	A	A	A	A	A
Dual exhaust system		A ⁴⁾				
Comfort & Convenience						
Air conditioning	A	A	A	A	S	S
Automatic air conditioning		A	A	A	A	
Electronic Touch Climate Control			A	A	A	
Soft-Ray tinted glass	A	A	A	A	A	S
Tilt steering column	A	A	A	A	A ⁵⁾	A
Tilt and telescoping steering column			A	A	A ⁶⁾	
Cruise-Master resume-speed control	A	A	A	A	A	A
Power windows	A	A	A	S	S	S
Electric trunk or tailgate lock release	A	A	A	A	A ⁷⁾	A
Electric trunk lock			A	A		
Electric door locks	A	A	A	A	A	S
Automatic electric door locks			A	A	A	A
Remotely door lock & interior light control			A	A		
Electric rear-window defogger	A	A	A	A	A	A
Electric shift stock	A	A	A	A		
Electric digital clock	A ⁸⁾	A	A	S	S	
Convexing lights			A	A	A	
Door courtesy & warning lights	S ⁹⁾	A ⁹⁾	A ⁹⁾	A ⁹⁾	S	S
Dome reading lamp	A	A	A	A	A ⁹⁾	S
Refractolux fluorescent coach lamps	A ⁹⁾	A ⁹⁾	A	A ⁹⁾	A	
Tungsten-halogen, high-beam headlamps	A	A	A ⁹⁾	A	A ⁹⁾	
Engine compartment light	A ⁹⁾	A	S	A	A ⁹⁾	S
Trunk light	A ⁹⁾	A ⁹⁾	S	S ⁹⁾	S	S
"Headlamps on" indicator	A	A	A	A	A ⁹⁾	S
Fullnight Sentinel automatic headlamp control			A	A		
Trip Monitor			S	A	A	
Storage console		S	A	A	A ⁹⁾	
Power seat(s)	A ⁹⁾	A ⁹⁾	A	A	A ⁹⁾	S ⁹⁾
Trip odometer	A ⁹⁾	A	A	A	A	A
2-speed windshield wiper with low-speed delay feature	A	A	A	A	A	A
Low windshield wiper fluid indicator			A	A	A	A
Year vanity mirror			A	A	A	A
Lighted rear vanity mirror			A	A	A	A
Radio control mirrors			A	A	A	A
Radio control mirrors with left illuminated thermometer			A	A		
Mesh roof			A			
Automat—sliding glass			A	A ⁹⁾	A ⁹⁾	A
Sunroof—flip-up, tilt-vent			A			
Sport steering wheel						
Delco AM radio			A ⁹⁾	A	A	A ⁹⁾
Delco AM-FM radio			A	A	A	A
Delco AM-FM stereo radio			A	A	A	A ⁹⁾
Delco FM stereo radio			A	A	A	A
Delco AM-FM stereo Full-feature radio						A
Delco 8-track tape player with AM-FM stereo radio			A	A	A	A
Delco 8-track tape player and FM AM-FM stereo radio			A	A	A	A
Delco 8-track tape player and AM-FM stereo Full-feature radio						A
Delco cassette tape player and AM-FM stereo radio			A	A	A	A
Delco cassette tape player and FM AM-FM stereo radio			A	A	A	A
Delco cassette tape player and AM-FM stereo Full-feature radio						A
Delco CE and AM-FM stereo radio with 10-band power antenna			A	A	A	A
Delco CE, 8-track tape player and AM-FM stereo radio with 10-band power antenna			A			
Delco CE, 8-track tape player and FM AM-FM stereo radio with 10-band power antenna						A
Delco CE, cassette tape player with AM-FM stereo radio and 10-band power antenna			A			
Delco CE, cassette tape player with FM AM-FM stereo radio with 10-band power antenna						A
Delco Concert Sound speaker package						A ⁹⁾
Delco graphic equalizer (available with radios GM, GM2 & GM3)			A			
Delco extended-range speakers			A	A ⁹⁾	A ⁹⁾	A ⁹⁾
Fixed-mast antenna			S	A	A	
Windshield antenna			A	A	A	A ⁹⁾
Automatic power antenna			A	A	A	A
Automatic 10-band power antenna			A	A	A	A
Appearance & Protection						
Designers' Ancient Paint			A ⁹⁾	A	A	A ⁹⁾
Body-side stripes			A	A ⁹⁾	A	A ⁹⁾
Custom wire wheel covers with locks			A ⁹⁾	A	A	A
Chrome-plated road wheels (4)			A	A	A	A
Self-sealing tires			A ⁹⁾	A	A	A
Deluxe wheel covers			A ⁹⁾	A	S	S
Designers' wheel covers						S ⁹⁾
Custom wheel covers						A ⁹⁾
Styled aluminum wheels (4)				A	A	A
Designers' Sport wheels (4)				A ⁹⁾		
Turbine wheels (4)				A	A	
Sport wheel covers				A ⁹⁾		
Electric fuel cap lock						A ⁹⁾
Acoustic insulation package				A ⁹⁾		
Front/rear bumper guards				A	A ⁹⁾	S
Protective body-side moldings				A	A	S
Door-edge guards				A	A	A
Anti-theft alarm system with saphir internet				A ⁹⁾	A	A
¹⁾ —Coupe only ²⁾ —Standard on Regal Sport Coupe and Wildcat T100 ³⁾ —Standard on Limited ⁴⁾ —Standard on 1 T100 ⁵⁾ —Coupe only ⁶⁾ —Standard on Electra Estate Wagon ⁷⁾ —Not available on 1 T100 ⁸⁾ —Not available on Wagon ⁹⁾ —Not available on Sport Models ¹⁰⁾ —Standard on Park Avenue						

Occupant Protection

Manual lap belts with push-button buckles for rear and center front (when applicable) passenger positions

Manual lap/shoulder belts for driver (with remainder light and audible warning) and right front passenger

Energy-absorbing steering column

Passenger-guard door locks

Safety door latches and stamped-steel hinges

Folding seatback latches

Energy-absorbing padded instrument panel and front seatback tops

Laminated windshield/tempered side and rear glass

Safety armrests

Glove box and console door latch impact security

Smooth, contoured door- and window-regulator handles

Automatic locking, rear outboard seat belt retractors

Pressure-lock radiator cap

Identification symbols for controls and displays

Available Equipment

Infant Low Seat

Child Low Seat

Manual rear lap/shoulder belts

Accident Avoidance

Side marker lights and reflectors
Parking lamps that illuminate with headlamps

Four-way hazard warning flasher

Backup lights
Lane change feature in direction signal control

Windshield defroster, washer and dual-speed wipers

Vinyl-edged inside mirror

Outside, rearview mirror

Dual master cylinder brake system with warning light

Starter safety switch

Dual-action safety hood latches

Low-glass finish on instrument panel top, inside windshield moldings, wiper arms and blades, and steering wheel metallic surfaces

Safety wheel rims

Front disc brakes with audible wear indicators

Self-adjusting brakes

Illumination of windshield wiper and washer (except Skyhawk) heater and defroster controls on instrument panel

Pressure relief gas cap

Visible vehicle identification

Visible vehicle identification

Anti-Theft

Anti-theft ignition key reminder buzzer

Anti-theft steering column lock

Anti-theft key system (one key for ignition only; other key for glove compartment, doors, trunk and tailgate)

Visible vehicle identification

A Word About Engines

Buicks are equipped with GM built engines produced by various divisions. See your dealer for details or please refer to the Buick power-train engine chart on the insert posted to your dealer with this catalog.

A Word About Assembly, Components and Optional Equipment in These Buick Products.

The Buicks described in this brochure are assembled at facilities of General Motors Corporation operated by Buick or GM Assembly Division. These vehicles incorporate thousands of different components produced by various divisions of General Motors and by various suppliers to General Motors. From time to time during the manufac-

turing process, it may be necessary, in order to meet public demand for particular vehicles or equipment, or to meet federally mandated emissions, safety and fuel economy requirements, or for other reasons, to produce Buick products with different components or differently sourced components than initially scheduled. All such components

have been approved for use in Buick products and will provide the quality performance associated with the Buick name.

With respect to extra cost optional equipment, make certain you specify the type of equipment you desire on your vehicle when ordering it from your dealer. Some options may be unavailable when your car

Buy or lease a Buick

Many Buick dealers offer you the opportunity to buy or lease a Buick. Ask about their leasing arrangement. It may be right for you.

The GM Continuous Protection Plan

It offers service protection in addition to that provided by GM's new vehicle limited warranty. Coverage is available only in U.S.A. and Canada for the 1981 model year. Ask your Buick dealer about it.

