

1980 BUICK SKYLARK.



About this catalog.

We have tried to make this catalog as comprehensive and factual as possible. And, we hope you find it helpful. However, since the time of printing, some of the information you'll find here may have been updated. Your dealer has details and, before ordering, you should ask him to bring you up-to-date.

The right is reserved to make changes at any time, without notice, in prices, colors, materials, equipment, specifications and models, and to discontinue models.

Some of the equipment shown or described throughout this catalog is available at extra cost. Check with your Buick dealer for complete information.

SKYLARK IS A CAR TO DELIGHT THE DRIVER IN YOU.

A few words in general seem appropriate about the 1980 Skylark because it is, in many ways, so unlike any Buick ever built before.

It is a front-wheel-drive automobile. It has a transverse-mounted engine. Its interior amenities and appointments are definitely of Buick caliber. It's been designed to deliver a comfortable ride. And it's been engineered with keen attention to noise isolation for quietness that's in the Buick tradition.

Further, although this new Skylark is over 19 inches shorter overall than its predecessor, its interior roominess is remarkably similar.

You'll be reading more about these qualities of the 1980 Buick Skylark as we unfold the story of this extraordinary motor car.



It has plenty of Buickness about it, this new Skylark. But its appearance also carries the unmistakable stamp of Skylark's own character.

Skylark's crisply tailored appearance makes a clear statement about its capability as a piece of driving machinery. Its lines are crisp, sure and honest. There's more than an echo of the genuine road car here. An uncomplicated look of competence.

When you step inside this new Skylark, you instantly experience some of its design wizardry. Surprisingly generous leg room. Hip room and head room, too, for that matter. For instance: While this new Skylark is over a foot and a half shorter overall than last

year's, front- and rear-seat leg room, front and rear hip room and rear head room have actually been increased. And with the roominess, comes a decidedly Buick ambience.

Before you turn the key and put the 1980 Skylark in motion, a word of advice: If you've never driven a front-wheel-drive car before, get ready for an extremely satisfying experience. You'll get the sense of an automobile that's firmly and confidently in command of its environment.

With front-wheel drive, you know, the wheels that do the steering also do the driving. In addition, the engine weight is over the driving wheels. This combination of qualities results in a car that has impressive traction

capability in snow or wet conditions.

Skylark's businesslike maneuvering manners are further aided and abetted by a rack-and-pinion steering arrangement and its new front and rear suspension.

As for power, there is the standard 2.5 litre, four-cylinder engine and a 2.8 litre V-6 is available. Buick Skylarks are equipped with GM-built engines produced by various divisions. See the Skylark powerteam chart on the back page of this catalog or your dealer for details.

All in all, Skylark is a car that will hold a very special appeal for the driver in you, while it treats your passengers with the utmost consideration.



A Skylark Limited Sedan.

A
QUIET WORD
ABOUT
SKYLARK'S
RIDE.



The 1980 Skylark is dedicated to the proposition that a car should provide its passengers with an environment of ease and comfort.

Take the ride. Skylark's ride is in the Buick tradition of smoothness. The chassis is completely new. Its principal features are a MacPherson strut front suspension and a rear suspension of trailing-arm design, with track bar and stabilizer bar.

If you're a car enthusiast, the suspension design alone speaks eloquently of Skylark's inherent roadworthiness. Skylark's ride is remarkably comfortable. The car handles irregular road surfaces with an aplomb you might expect in larger and heavier machines. For those who have special requirements,

Rallye ride-and-handling and firm ride-and-handling suspension packages are available.

And special attention has been paid to making the environment of the passenger compartment relaxing and inviting. The unitized Body by Fisher contributes to Skylark's feeling of solidity. And the powertrain is completely cushioned by rubber mounts.

As if all this weren't enough, a special acoustics insulation package is included as standard equipment on Skylark Limited and available on Skylark and Skylark Sport models. It provides a pleasingly quiet environment.

Skylark passengers not only enjoy the ambience, but also the comfort Buick owners expect. The 5-passenger seating arrangement

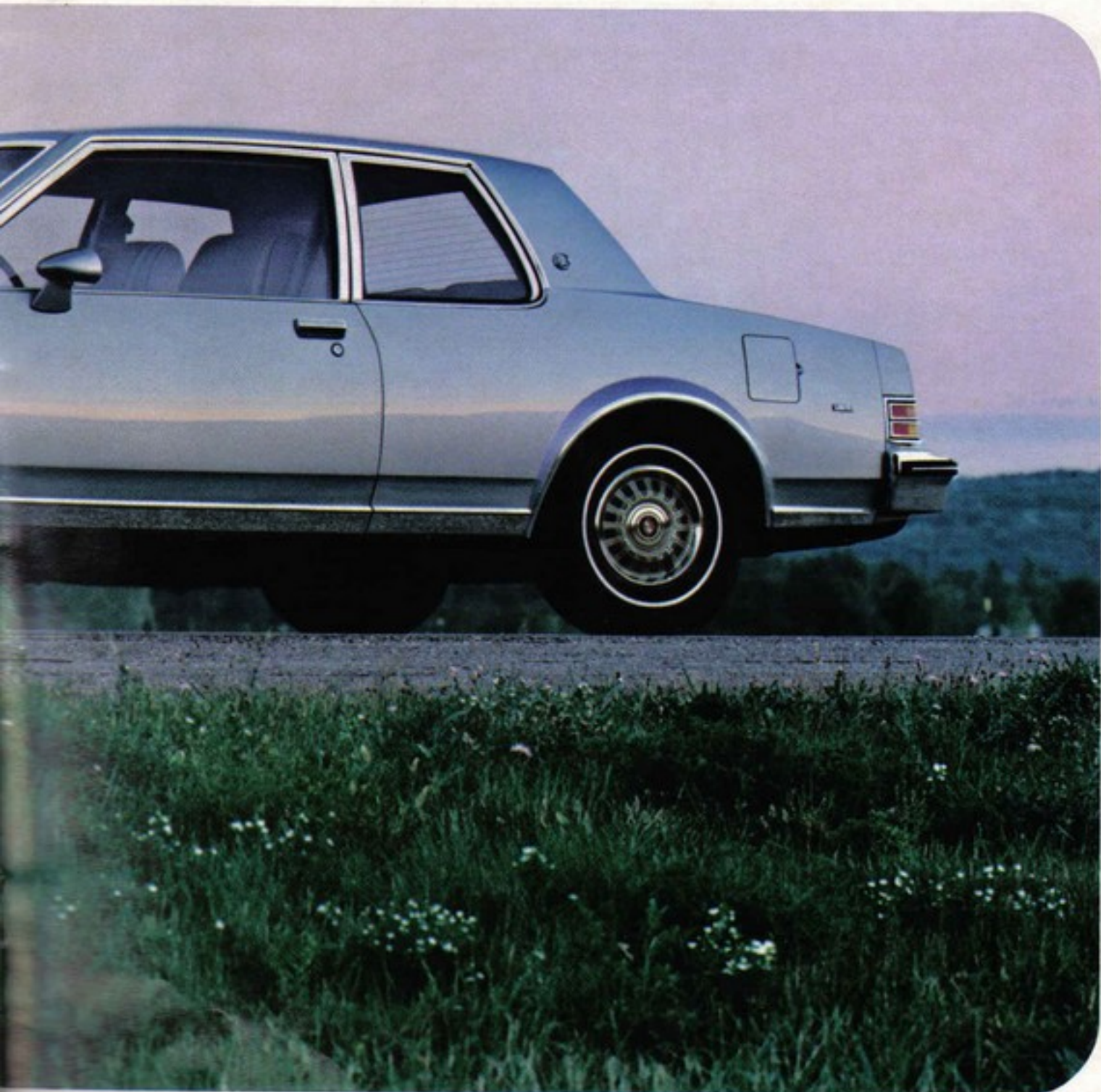
(two in front, three in rear) adds to the car's feeling of spaciousness. There's nothing cramped about it, even with a full complement of five passengers.

Speaking of seating, a reclining front passenger seatback and/or driver's seatback are thoughtful options you may want to consider.

Skylark's interior elegance is particularly pronounced with the Limited's accoutrements. But more about that later.

Unquestionably, the 1980 Skylark is an automobile in which you can cover the miles, on long or short trips, with ease and comfort.

A ride might well convince you that this should be your Buick.



A Skylark Limited Coupe.

SKYLARK
CAN BE JUST
ABOUT
ANYTHING YOU
WANT IT TO BE.



You can choose a downright sumptuous coupe or sedan: the Skylark Limiteds. Or choose the Skylark Coupe or Sedan that is merely luxurious.

The Limited models possess the kind of thoughtful elegance that has made this nameplate highly prized by Buick owners for decades. There's bountiful evidence here of luxuries being treated as necessities, with delightfully welcome emphasis on seating comfort and courtesy features.

And the basic Skylark is certainly anything but a basic transportation package. Scores of creature luxuries are standard, including a Delco AM radio with dual front speakers.

Then we come to the Skylarks that just

might give some well-known road machines we could mention a few sleepless nights. We're talking about the new Skylark Sport Coupe and Sport Sedan.

Perhaps the best way to describe these two formidable automobiles is to tick off their quite special equipment: specially styled grille and front-end appearance, black moldings, wheel opening moldings, front and rear bumper strips, smoked lenses on tail lamps, Sport mirrors, Sport steering wheel, Designers' Sport wheels (4), amber front park and turn lamps, Rallye ride-and-handling suspension, larger rear stabilizer bar, black instrument panel treatment, voltmeter, temperature gage and trip odometer and

P205/70R-13 steel-belted, radial-ply black-wall tires. In addition, lower body sport stripes with Hawk decal are available as an exclusive offering on Skylark Sport models. Get the picture?

Available fast-ratio power steering, front bucket seats, operating console with standard 4-speed floor shift are a combination you might well wish to investigate.

Both the Skylark Sport Coupe and Sedan are wholly contemporary extensions of a venerable tradition: the capable, comfortable and vastly satisfying road car.

So, all you really have to do to select your Skylark is decide what kind of car you want it to be.

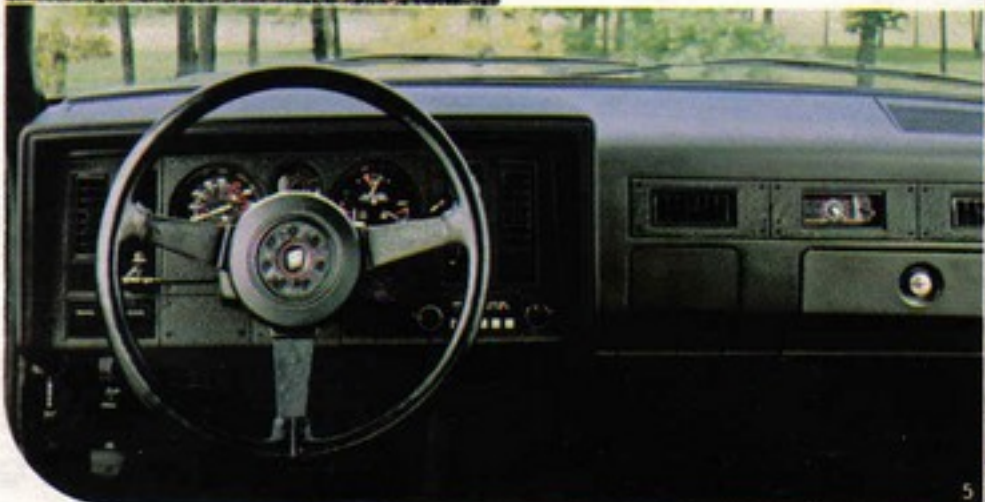
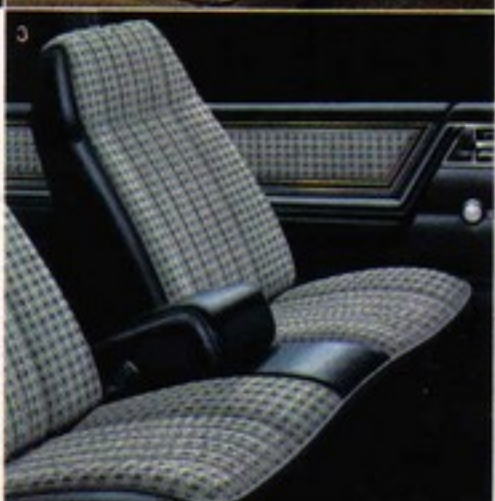


A Skylark Sport Coupe.

1980 SKYLARK INTERIOR FEATURES.



- 1 A Limited instrument panel showing the driver control center along with an available dial dock.
- 2 Skylark and Skylark Sport standard bench seat is vinyl or houndstooth cloth fabric.
- 3 A notchback vinyl or houndstooth cloth interior is available on Skylark and Skylark Sport models.
- 4 Bucket seats are a sporty Skylark Coupe and Skylark Sport Coupe option, shown here in Oyster White vinyl.
- 5 Skylark Sport Coupe and Sport Sedan instrument panel has a black finish.
- 6 Skylark luggage compartment is the same size or larger than last year. A new design improves its usable space.



By positioning the powerplant sideways (transverse mounting), we have been able to reduce the overall length of Skylark, yet provide a roomy passenger compartment. An interior that is light, spacious and most inviting.

Below is a good example—the front compartment of the Limited Sedan. The notchback-style seat has a pull-down center armrest, which is a comforting arrangement for driver and passenger alike. The fabric, shown here in tan, is a luxurious brushed, woven cloth which is a Skylark Limited hallmark. Limited interiors are also enriched by such niceties as carpeted lower door panels, rear-window filler panel and passenger assist straps above the front doors. There is also a

generous deployment of simulated wood-grain panels and door courtesy and warning lamps.

For your convenience, a new seat belt system in the 1980 Skylark Coupes eliminates guides, loops and catches on seatbacks. Another nice touch: a new, inside, door-lock lever which is tucked away beneath the recessed door handle providing a stylish appearance and more convenience for you.

Of course, you can fully indulge your own personal notions of what a car should be like inside with Skylark's more-than-generous list of options. Air conditioning, for openers. Also, perhaps, a flip-open glass sunroof. Then you can decide what kind of Delco sound

system you like to drive with—from standard AM to available FM, CB, stereo radios and remote tape players.

Other attractive options: storage console (with automatic transmission and bucket seats), electric rear-window defogger, rooftop carrier, 6-way power seat, trunk trim carpet, dome reading light, sunshade map light. But we'll leave all these wonderfully satisfying choices to you. Your Buick dealer will be happy to help.

However you choose to appoint and equip your new Skylark, you'll have a car you'll enjoy driving immensely, and take special pride in owning.

After all, life is to enjoy.



A Skylark Limited interior.

1980 SKYLARK. AN INSPECTION.

Unitized Body by Fisher features strength and quality.

Comfortable seating with full-foam seat construction.

Smooth ride with MacPherson strut front suspension. Trailing-arm rear suspension with track bar and stabilizer bar. Coil springs, front and rear.

Delco AM radio with dual front speakers standard.

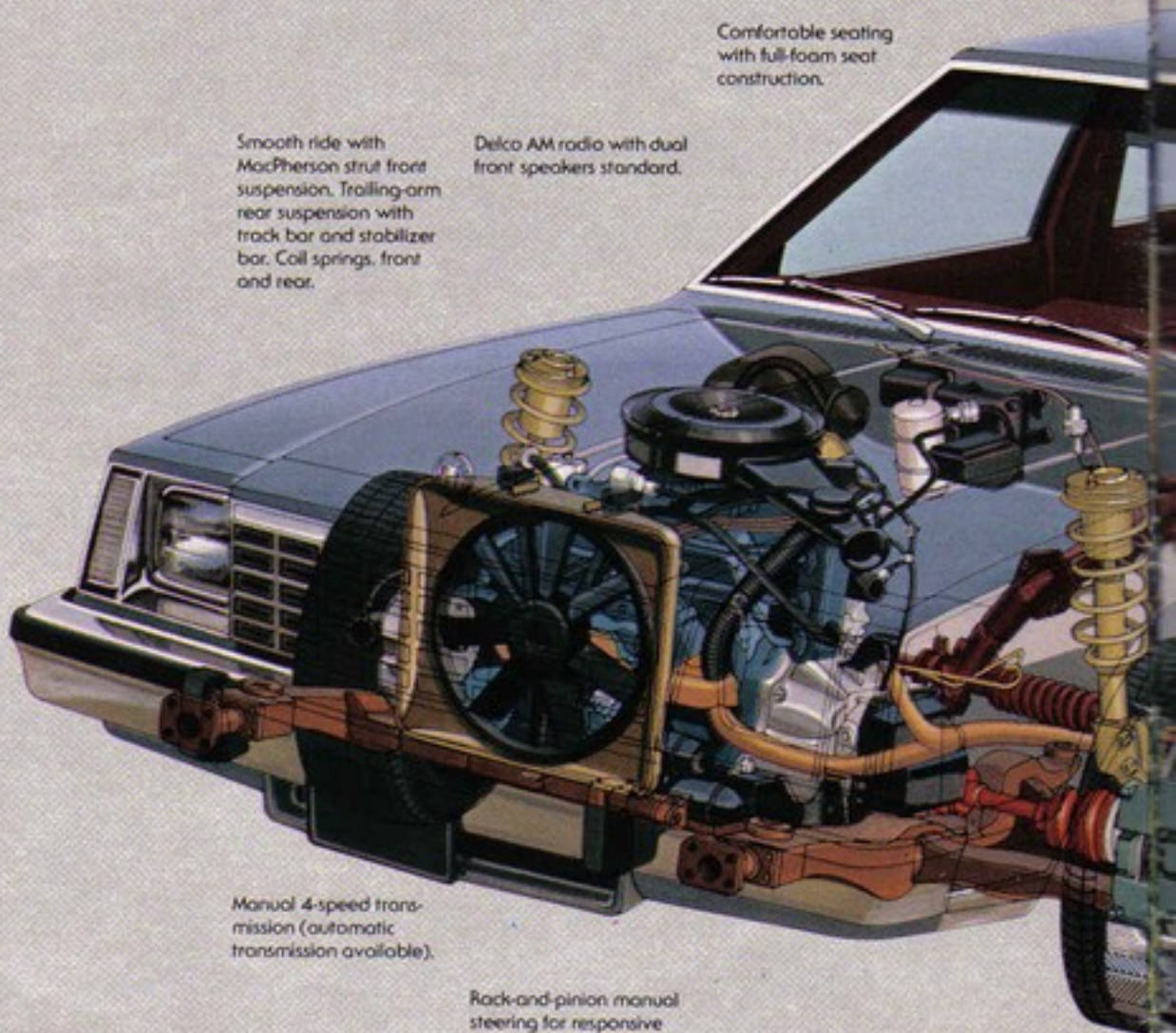
Fast-ratio power steering included on Sport Coupe and Sport Sedan, when power steering is ordered. Also included on other models when both Rallye ride-and-handling suspension and power steering are ordered.

Transverse-mounted 2.5 litre (151 CID) 2-bbl. I-4 engine standard (2.8 litre (173 CID) 2-bbl. V-6 engine available).

Manual 4-speed transmission (automatic transmission available).

Rack-and-pinion manual steering for responsive steering (power steering available).

Manual brakes with front disc/rear drum.



When you look at the illustration below, you can begin to appreciate some of Skylark's inner qualities. Qualities that come from thoughtful, sound engineering. And attention to detail.

Everywhere you look, its good ideas are obvious. In the front-wheel drive, and the transverse-mounted engine configuration, for instance. It features a semi-closed cooling system. A remote, electrically operated cooling fan. A Delco Freedom Battery and High-Energy Ignition system. New-construction, radial-ply tires with low rolling resistance are standard.

Other major standard features include fiberglass-reinforced plastic inner front wheelhouse panels, the use of galvanized and

zinc iron alloy steels, Zincrometal® and aluminum. In addition, extensive anti-corrosion measures are employed utilizing zinc primers, wax coatings and Plastisol in strategic locations.

Skylark's quality Body by Fisher features full flow ventilation, cut-pile carpeting, inertia front seatback locks on the Coupes, and roll-down, rear door windows on Sedans.

Skylark innovations for 1980 include a wet-arm windshield wiper system for positive dispersion of washer fluid. And soft, variable-intensity floodlighting helps illuminate the instrument panel cluster area.

Even though Skylark seems to embody an enormous piece of automotive progress at a single jump, this is far from being a blue-sky

automobile. Each of Skylark's advances is rooted in sound and solid engineering.

After all, Skylark springs from a long and proud tradition of innovation and pioneering. The valve-in-head engine and four-wheel brakes are among the many things Buick championed, which seemed startling in their day.

Our philosophy has always been to keep in touch with—and try to stay a bit ahead of—your changing automotive needs.

We believe we've done just that with the 1980 Buick Skylark. We believe it's a car of and for its time. A car that will have appeal for a great many people. We hope, including you.

Available rooftop carrier can be equipped to carry skis, bikes or other items.

Special acoustical insulation package for quiet (standard on Skylark Limited and available on other models).

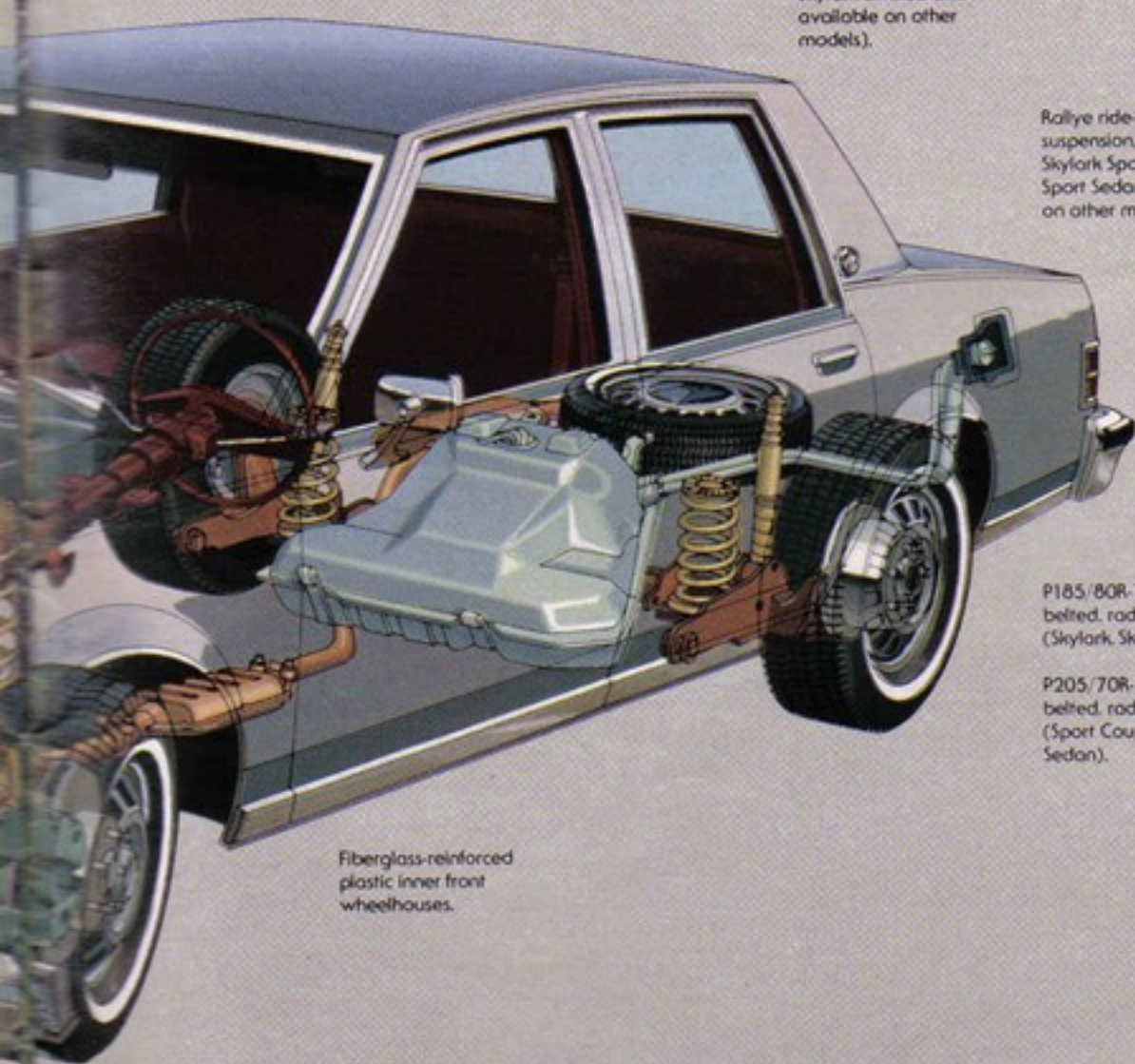
Rallye ride-and-handling suspension, standard on Skylark Sport Coupe and Sport Sedan (available on other models).

P185/80R-13 fiberglass-belted, radial-ply tires (Skylark, Skylark Limited).

P205/70R-13 steel-belted, radial-ply tires (Sport Coupe and Sport Sedan).

Fiberglass-reinforced plastic inner front wheelhouses.

Front-wheel drive with its inherent traction qualities.



1980 SKYLARK BUYER'S GUIDE.

Available Equipment.

Engine and Chassis.

- Heavy-duty battery
- Heavy-duty engine and transmission cooling
- 70-amp Delcotron generator
- Firm ride-and-handling package (N.A. on Sport Models)
- Rallye ride-and-handling package (std. on Sport Models)
- Automatic transmission
- Power steering
- Power brakes
- California assembly line emission testing (required in California)

Interior.

- 6-way power seat (driver's side only with bucket seats)
- Front driver and/or passenger seatback recliner—manual
- Bucket seats
- Full-length operating console
- Storage console
- Carpet savers and hand-mats
- Acoustic package (std. on Limited Models)

Comfort and Convenience.

- Air conditioner
- Cruise-Master speed control
- Tilt steering column
- Electric door locks
- Electric trunk lock release

- Power windows
- Electric rear-window defogger
- Electric dial or digital clock
- Instrument gauges
- Trip odometer
- Outside, rearview sport mirrors
- Delco AM-FM stereo radio
- Delco 8-track tape player and AM-FM stereo radio
- Delco CB, 8-track tape player and AM-FM stereo radio
- Delco CB, cassette tape player and AM-FM stereo radio
- Delco Triband power antenna
- Rooftop carrier

Appearance and Protection.

- Designers' Accent paint treatment
- Sport steering wheel
- Chrome-plated road wheels (4)
- Custom wire wheel covers (N.A. on Sport Models)
- Designers' Sport wheels (4) (std. on Sport Models)
- Flip-open, Vista-Vent, glass sunroof
- Landau top
- Long vinyl top
- Body-side stripes
- Front and rear bumper strips (std. on Sport Models)
- Bumper guards
- Protective body side moldings

See your dealer about other available equipment.

1980 BUICK SKYLARK SAFETY FEATURES.

Occupant Protection.

Seat belts with pushbutton buckles for all passenger positions.
Two, front combination seat and inertia reel shoulder belts for driver (with reminder light and buzzer) and front passenger.
Energy-absorbing steering column.
Passenger-guard door locks.
Safety door latches and stamped-steel hinges.
Folding seatback latches.
Energy-absorbing padded instrument panel and front seatback tops.
Laminated windshield.
Safety armrests.

Accident Avoidance.

Side marker lights and reflectors.
Parking lamps that illuminate with headlamps.
Backup lights.
Four-way hazard warning flasher.
Lane-change feature in direction signal control.
Outside rearview mirror.
Windshield defrosters, washer and dual-speed wipers.
Wide-view, inside, mirror (vinyl-edged, shatter-resistant glass and deflecting support).
Dual master cylinder brake system with warning light.
Starter safety switch.
Dual-action safety hood latches.

Anti-theft.

Anti-theft ignition key reminder buzzer.
Anti-theft steering column lock.

SKYLARK, SKYLARK SPORT, SKYLARK LIMITED POWERTEAMS

Standard or Available	Engine Description	Federal or California or Altitude	4-speed Manual Transmission	Automatic Transmission
Standard	2.5 litre (151 CID) 2-bbl. L-4 (A)	Federal California	Std.	E.C.
Available	2.8 litre (173 CID) 2-bbl. V-6 (B)	Federal, California Altitude*	Std.	E.C.

*High-altitude Emission System (NA6) required. Std.—Standard, E.C.—Available at extra cost.
(A)—Produced by GM-Pontiac Division, (B)—Produced by GM-Chevrolet Division.

BUY OR LEASE A BUICK.

Many Buick dealers offer you the opportunity to buy or lease a Buick. Ask about their leasing arrangement. It may be right for you.

THE GM CONTINUOUS PROTECTION PLAN.

It offers service protection in addition to that provided by GM's new vehicle limited warranty. Ask your Buick dealer about it.

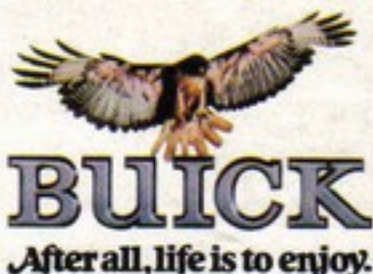
A WORD ABOUT ASSEMBLY, COMPONENTS AND OPTIONAL EQUIPMENT IN THESE BUICK PRODUCTS.

The Buicks described in this brochure are assembled at facilities of General Motors Corporation operated by a GM Assembly Division. These vehicles incorporate thousands of different components produced by various divisions of General Motors and by various suppliers to General Motors. From time to time during the manufacturing process, it may be necessary, in order to meet public demand

for particular vehicles or equipment, or to meet federally mandated emissions, safety and fuel economy requirements, or for other reasons, to produce Buick products with different components or differently sourced components than initially scheduled. All such components have been approved for use in Buick products, and will provide the quality performance associated with the Buick name.

With respect to extra-cost optional equipment, make certain you specify the type of equipment you desire on your vehicle

when ordering it from your dealer. Some options may be unavailable when your car is built. Your dealer receives advice regarding current availability of options. You may ask the dealer for this information. GM also requests the dealer to advise you if an option you ordered is unavailable. We suggest you verify that your car includes the optional equipment you ordered or, if there are changes, that they are acceptable to you.



BUICK
After all, life is to enjoy.



Ident. No. 80-04—3-15-79—2000

Printed in U.S.A.