



*'68 Wide Tracking Wagons / The Great Outdoor Sports*

# Bonneville

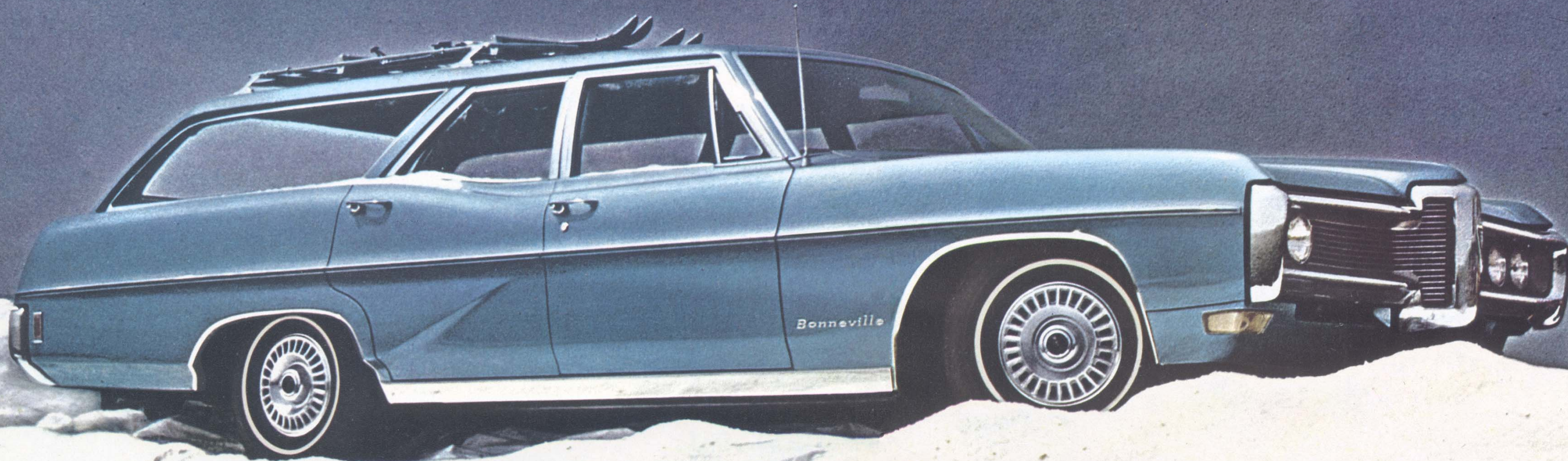
Was there ever a more elegant machine to haul things around in? Or go to the theatre in? Or climb a mountain in? So elegant, in fact, it might easily be thought of as a sort of limousine with an enormously large trunk. Which is precisely the impression it's meant to project, when you take it out for a night on the town. It gives quite a different impression when it's working, however. In fact, when you find out how much fits in its 91-cubic-foot cargo area, you'll be more apt to compare it to a truck. But then, how many trucks come with Bonneville's standard, 340-hp engine. Or a carpeted cargo area? Or simulated wood inserts in the doors? Variable-ratio power steering is just one of the many great options. Your dealer will show you the list.



*This is Bonneville's standard interior with black expanded Morrokide upholstery. The center of the seat folds down as an armrest.*



*All Bonneville's come with a folding third seat. The luggage rack is one of the options mentioned later on.*



## *Executive Safari*

This is the kind of wagon that can be an elegant land cruiser one day, and an all-out sportsman the next. Its wood grain vinyl "planking" (or paneling, if you prefer) is as appropriate at the curb as it is at the harbor. And its expanded Morrokide interior is as beautiful as it is impervious to wet swimsuits. In fact, you're not likely to find as distinctive a means of transportation that's nearly so well prepared for action. The 400-cubic-inch, 290-hp standard engine generates enough force to move about anything you'll want to take along. But, if you want more, you can get up to 375 hp in our 428-cubic-incher. Decide whether you want the two- or the three-seat model, then start making selections from our big accessory catalog. Your dealer will be glad to give you one.



*The Executive interior . . . expanded Morrokide, nylon-blend carpeting, electric clock, deluxe steering wheel, taffeta perforated headlining, etcetera, etcetera . . .*



## Catalina

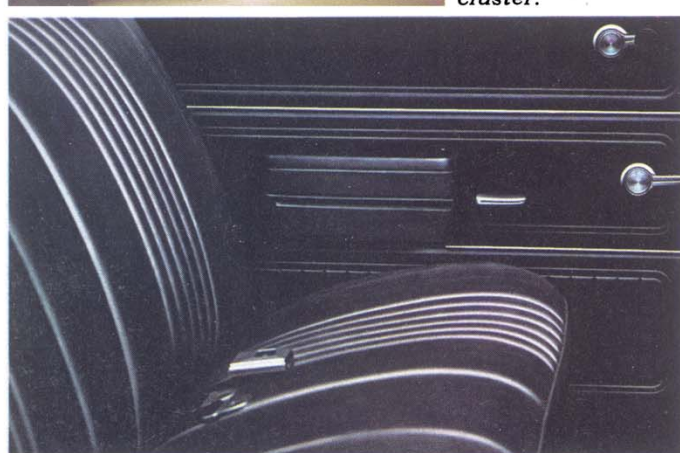
That shining example of engineering adeptness over there just happens to be our lowest priced, full-sized wagon. But once you've tasted the luxury of its interior and the performance of its standard 400-cubic-inch, 290-hp V-8, you'll be inclined to forget what a bargain you're getting and just concentrate on enjoying yourself. If your craving for luxury still isn't satiated, you may specify the Ventura Custom Interior, which includes a number of additional niceties. And, of course, you may substitute up to 428 cubic inches (and 375 hp) in the engine compartment. If there's anything else you'd like, you'll probably find it in our accessory catalog. Ask your dealer to give you one.



*The Ventura Option gives you a choice of magnificent interior combinations, like this one, plus other resplendent appointments.*



*The standard Catalina interior itself is nothing to sniff at. Including, as it does, all-Morrokide upholstery, nylon-blend carpeting and a wood grained vinyl panel surrounding the instrument cluster.*



## Tempest Safari

Who else could make extravagance so economical? Putting the elegance of simulated walnut exterior paneling on an agile compact wagon was a stroke of genius, if we do say so ourselves. As if that weren't enough, standard features like plush nylon-blend carpeting, vinyl-padded load mat with bright metal skid strips, assist grip and disappearing windshield wipers make Tempest Safari about the most regal wagon ever to run on regular gas. Take the standard 250-cubic-inch, Overhead Cam 6 with 175 hp or choose the optional 265-hp V-8. What was that about having your cake and eating it, too?



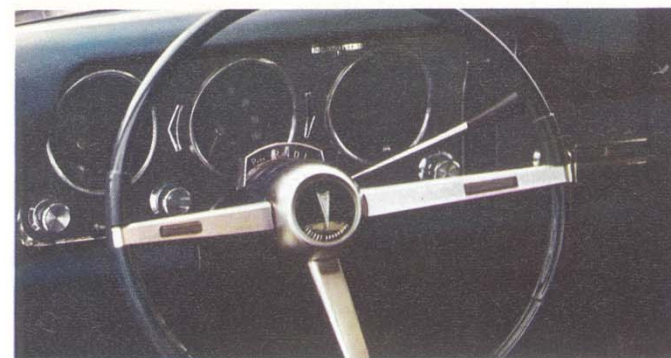
*The Safari interior (shown with optional head restraints). All-Morrokide, of course.*

*The wood grained vinyl dash panel is standard . . . air conditioner and tape player are decisions you'll have to make for yourself.*



## *Tempest Custom*

You won't believe we considered cost in designing the Custom Wagon, until you look at the price tag. Our all-Morrokide interior, nylon-blend carpeting, deluxe steering wheel and vinyl-padded load area mat make this seem very convincingly like a high-priced wagon. And its 86.5 cubic feet of cargo space are motivated by a 175-hp Overhead Cam Six, just as if you were paying a whole lot more. You can invest part of your savings in some of the many wagon options your dealer will tell you about.



*You are looking at one of the most lavish interiors ever to grace a low-priced wagon.*



# Options & Things

**CHROME LUGGAGE CARRIER.** Make good use of that nice, big roof and save space inside. Rails on all sides make tie-down easy. Ask your dealer about the removable model, too.



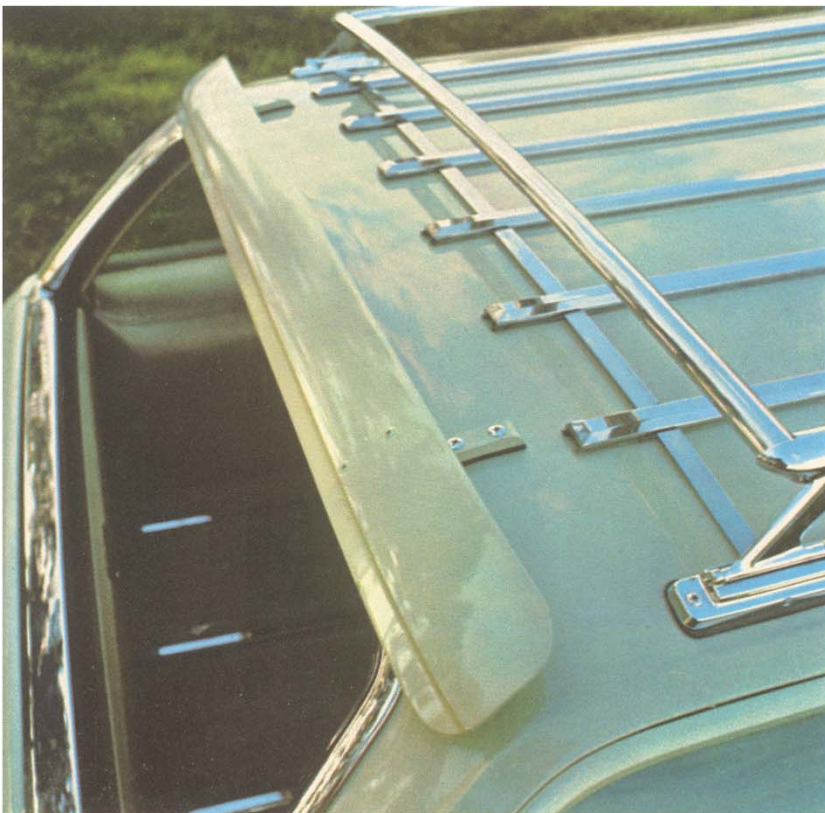
**LUGGAGE CARRIER COVER.** "Rakpak" for short. It's water- and dust-resistant and locks up tight.



**UTILITY PAD.** Durable, coated fabric pad helps keep cargo area clean and cargo undamaged. You can also take it out and use it for a ground cushion at picnics and like that.



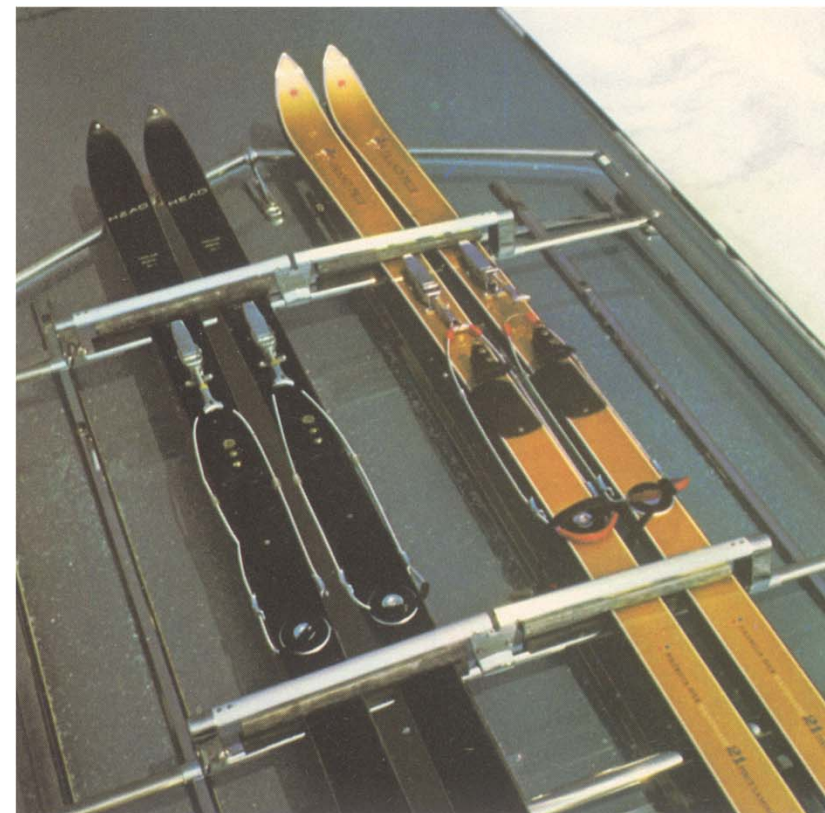
**AUTOMATIC LEVEL CONTROL.** Combined with Superlift Shock Absorbers, a vacuum motor under the hood levels your car when its loaded heavier than normal. Keeps the ride comfortable, the headlights pointed straight ahead.



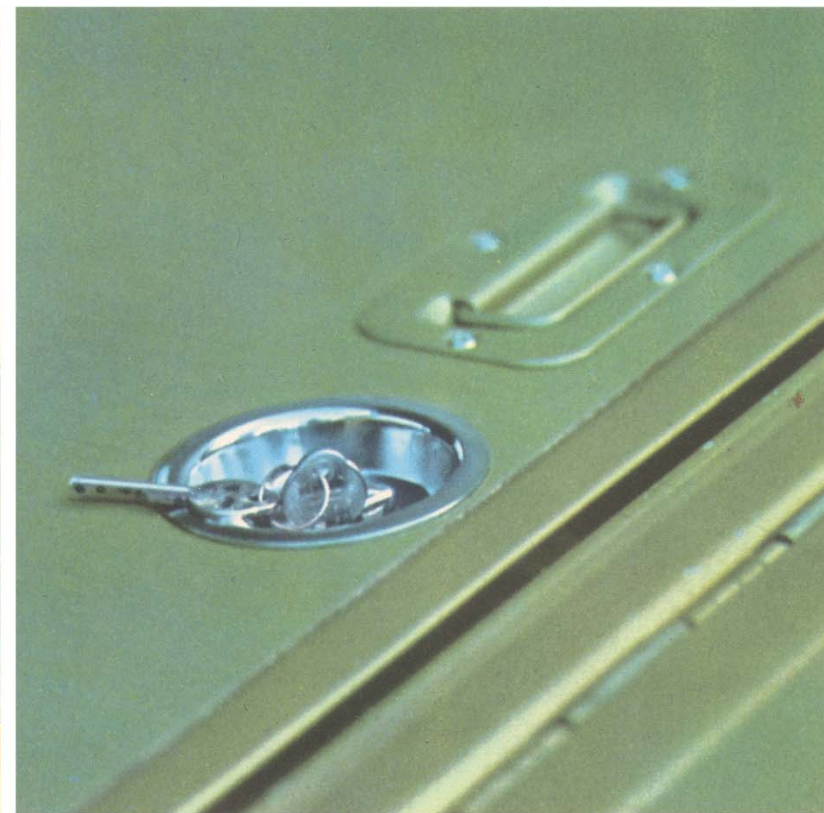
**TAILGATE-WINDOW WIND DEFLECTOR.** Helps keep dust off of the rear window. Also reduces wind noise with the cowl vents open, side windows closed and rear window open. Can you remember all that?



**POWER TAILGATE WINDOW.** Who says you can't get status in a station wagon? Lets you operate rear window with a touch of your finger. Standard on 3-seat wagons . . . available on 2-seaters.



**REMOVABLE SKI CARRIER ADAPTER.** Locks up to six pairs of skis to the permanent luggage rack. There's even a roof ski carrier you can get without the luggage carrier. Ask your dealer.

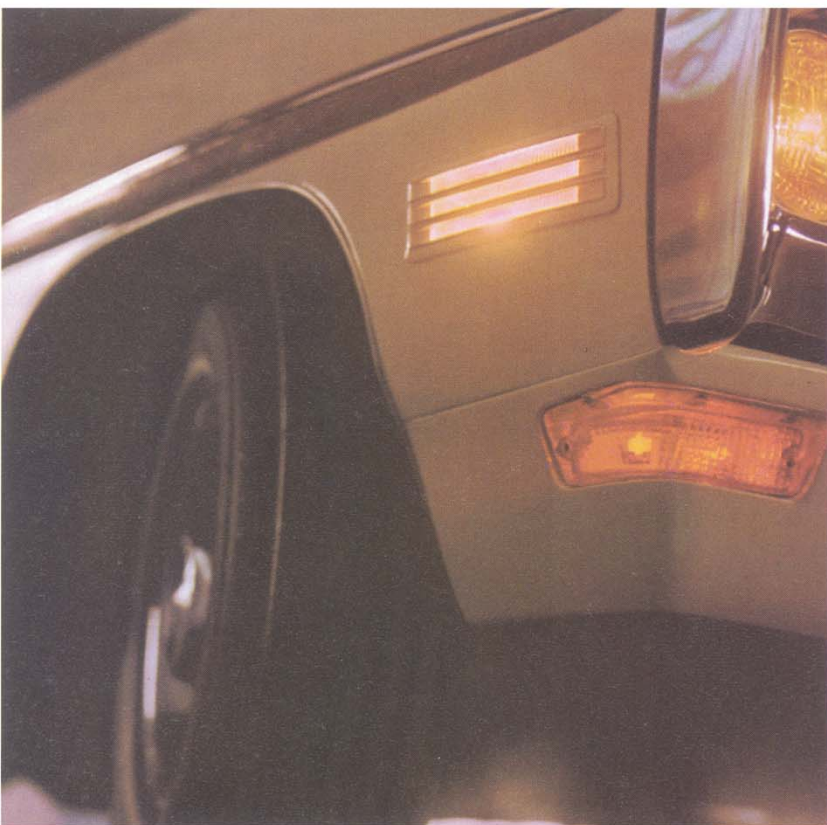


**LUGGAGE COMPARTMENT LOCK.** Added security for valuables left in rear load compartment, under floor. Good for hiding Christmas presents, too. Available on 2-seat wagons only.

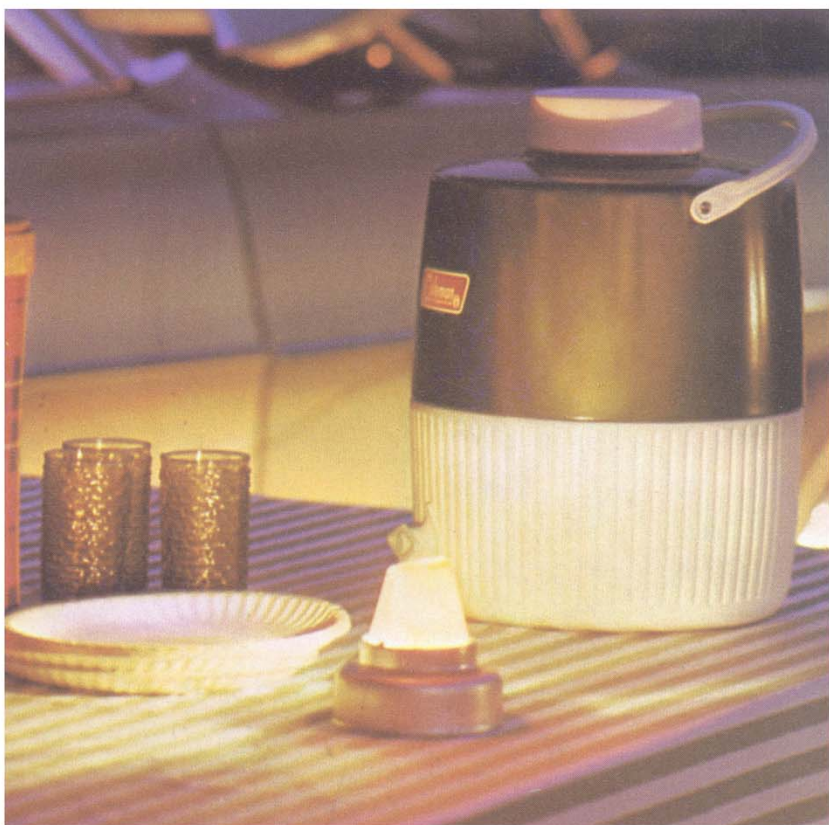
**REAR SPEAKER.** Lets rear passengers hear, too. A fader switch allows you to vary the volume between front and rear speakers, so the kids can have it loud in back while you have it quiet in front.



**REAR PASSENGER LIGHT.** This isn't an option, but we thought we'd show it to you anyway. It's standard on 3-seat wagons and operates from a switch next to the light.



**CORNERING LAMPS.** Light up in the direction you are turning. Operate automatically with turn signals. A good idea anytime . . . almost indispensable on dirt roads and in wooded areas.



**UTILITY LAMP.** Stores under hood with 17 feet of extension cord. Actually designed for emergency road service, but those who picnic at night will find it handy, too.



# Features, Specs & Dimensions

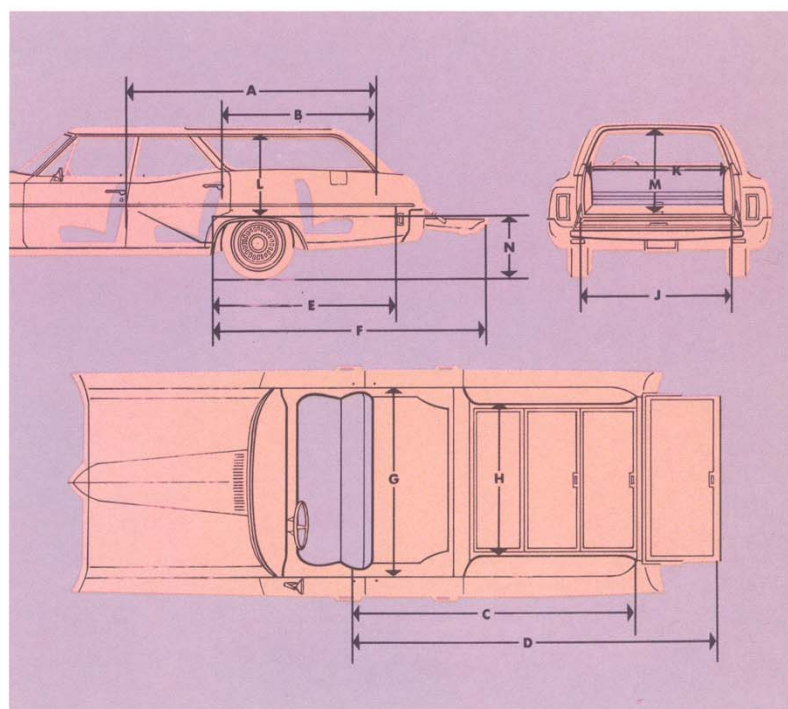
Of course, we didn't forget to include the comfort and safety features on our wagons that you'll find on all '68 Pontiacs.

For instance:

- Energy absorbing steering column
- Seat belts with pushbutton buckles for all passenger positions
- Passenger-guard door locks, with deflecting lock buttons—all doors
- Four-way hazard warning flasher
- Dual master cylinder brake system with warning light and corrosion-resistant brake lines
- Dual-speed windshield wipers and washers
- Outside rearview mirror
- Backup lights, new side marker lights and parking lamps that illuminate with headlamps
- Lane-change feature in direction signal control
- Padded instrument panel and sun visors
- Reduced-glare instrument panel top, inside windshield moldings, horn buttons, steering wheel hub and windshield wiper arms and blades
- Inside, day-night mirror with deflecting base
- Safety armrests
- Thick laminate windshield
- Soft, low-profile window control knobs and coat hooks
- Padded front and intermediate seatback tops and lower structure
- Yielding, smooth-contoured door and window regulator handles
- Energy absorbing instrument panel with smooth contoured knobs and levers
- Tire safety rim
- Safety door latches and hinges
- Uniform shift quadrant (PRNDSL)
- Seat-belt retractors—2 front
- Snag-resistant steering wheel hardware
- Door hinges of stamped steel
- Non-projecting wheel nuts, disc and caps
- Fuel tank and filler pipe security

There are dozens of other standard features to make your '68 Pontiac secure and comfortable. Add some basic driving skill plus a little common sense, and you shouldn't have a bit of trouble.

Pontiac Motor Division of General Motors Corporation reserves the right to make changes at any time in colors, materials, equipment, specifications, prices and models. Pontiac Motor Division, General Motors Corporation, 196 Oakland Ave., Pontiac, Michigan 48053. Litho in U.S.A.



	Catalina & Executive Safari (2- & 3-seat)	Bonneville (3-seat)	Tempest Custom (2-seat)	Tempest Safari (2-seat)
Cargo Volume (cu. ft.).....	91.7	90.8	83.7	83.7
Underfloor Compartment, 2-seat (cu. ft.).....	8.9		10.0	10.0
Underfloor Compartment, 3-seat (cu. ft.).....	4.2	3.9		
<b>Length (inches)</b>				
A. Top of front seatback to closed tailgate.....	84.5	84.5	79.9	79.9
B. Top of second seatback to closed tailgate.....	49.7	49.7	46.8	46.8
C. Front seat at floor to closed tailgate.....	93.7	93.5	90.9	90.9
D. Front seat at floor to end of open tailgate.....	121.6	121.4	117.0	117.0
E. Second seat at floor to closed tailgate.....	60.7	60.2	59.1	59.1
F. Second seat at floor to end of open tailgate.....	88.6	88.2	85.2	85.2
<b>Width (inches)</b>				
G. Maximum width of cargo space at floor.....	63.2	63.1	59.5	59.5
H. Minimum distance between wheel houses at floor.....	48.9	48.9	44.5	44.5
J. Rear-end opening width at belt.....	52.4	52.4	49.6	49.6
K. Rear-end opening width at top of tailgate.....	52.4	52.4	49.4	49.4
<b>Height (inches)</b>				
L. Maximum height.....	30.6	30.3	31.5	31.3
M. Maximum height of rear opening (tailgate open).....	28.7	28.4	28.6	28.4
N. Platform height of load floor (curb weight).....	25.6	25.9	23.6	23.8

Specifications	Tempest Custom & Tempest Safari			Catalina, Executive Safari & Bonneville			
	250	350	400	400	400	428	428
<b>Engine Size</b> (cu. in.)	250	350	400	400	400	428	428
<b>Engine Type</b>	OHC 6, 1-BBL Reg. Fuel	V-8, 2-BBL Reg. Fuel	V-8, 2-BBL Reg. Fuel	V-8, 2-BBL Prem. Fuel	V-8, 4-BBL Prem. Fuel	V-8, 4-BBL Prem. Fuel	V-8, 4-BBL Prem. Fuel
<b>Transmission Availability</b>	Standard with 3-Speed Manual or Automatic Transmission	Extra-cost Opt. with 3- or 4-spd. Manual or Automatic Transmission	No-cost Opt. with Turbo Hydra-Matic Transmission only	Standard on Catalina and Executive with Turbo Hydra-Matic Transmission	Standard on Bonneville Extra-cost Opt. on Catalina and Executive with 3-spd. Manual or Turbo Hydra-Matic Trans.	Extra-cost Opt. on Catalina, Bonneville and Executive with Turbo Hydra-Matic Trans.	Extra-cost Opt. all models with 3-spd. Manual or Turbo Hydra-Matic Trans.
<b>Bore and Stroke</b> (inches, nominal)	3.88 x 3.53	3.88 x 3.75		4.12 x 3.75		4.12 x 4.00	
<b>Horsepower</b>	175 @ 4800 rpm	265 @ 4600 rpm	265 @ 4600 rpm	290 @ 4600 rpm	340 @ 4800 rpm	375 @ 4800 rpm	390 @ 5200 rpm
<b>Torque</b> (lb. ft.)	240 @ 2600 rpm	355 @ 2800 rpm	397 @ 2400 rpm	428 @ 2500 rpm	445 @ 2900 rpm	472 @ 3200 rpm	465 @ 3400 rpm
<b>Compression Ratio</b>	9.0:1	9.2:1	8.6:1	10.5:1	10.75:1	10.5:1	10.75:1
<b>Cooling System Capacity</b>	12.1 qts.	18.6 qts.		18 qts.		17.2 qts.	
<b>Oil Capacity</b> (less filter refill)	5 qts.	6 qts.		6 qts.			
<b>Fuel Tank Capacity</b>	21.5 gals.			24 gals.			

Note: 4-Speed Manual, Automatic and Turbo Hydra-Matic Transmissions, where indicated are extra-cost options.

All options noted herein are extra-cost equipment unless otherwise specified. Ask your dealer for all price information on any model or special equipment you desire.

