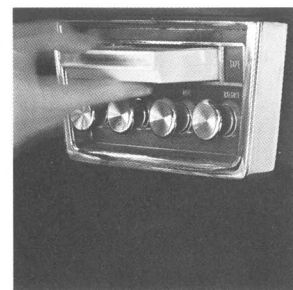
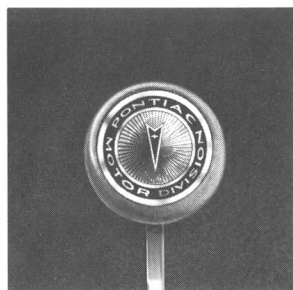
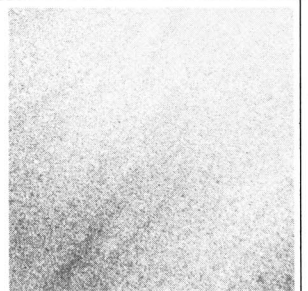
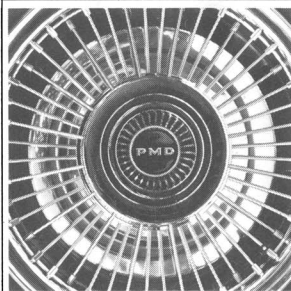
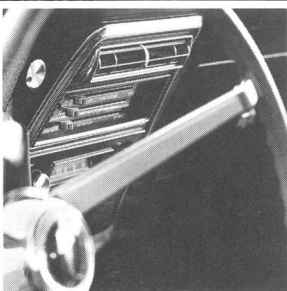
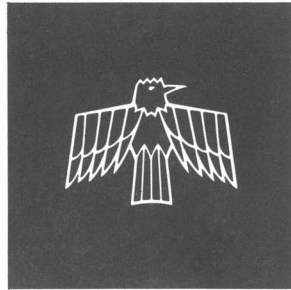
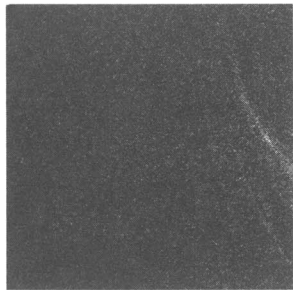
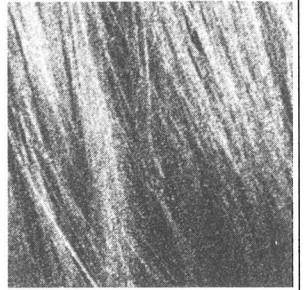
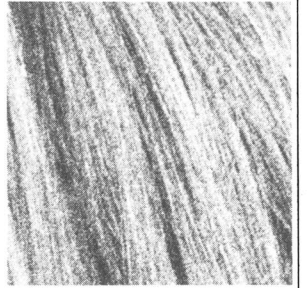


1967 Accessories For The Pontiac Firebird



PROTECTION

DOOR EDGE GUARDS (Code 382)

These bright, stainless steel strips help prevent nicks and scratches on door edges. (F,D)

FLOOR MATS, FRONT (Code 631) REAR (Code 632)

Keep car looking new. Easily removed for washing. Available in seven Firebird colors to harmonize with interiors. (F,D)

POWER OPTIONS

POWER BRAKES (Code 502)

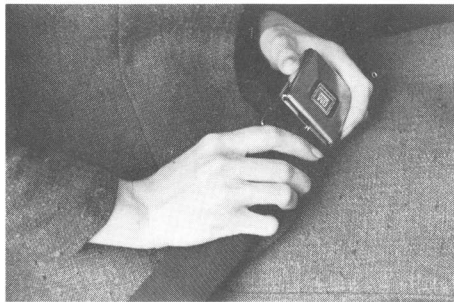
Includes bright metal trim plate on brake pedal when factory-installed. Recommended with disc brakes. (Code 521) (F,D)

POWER STEERING (Code 501)

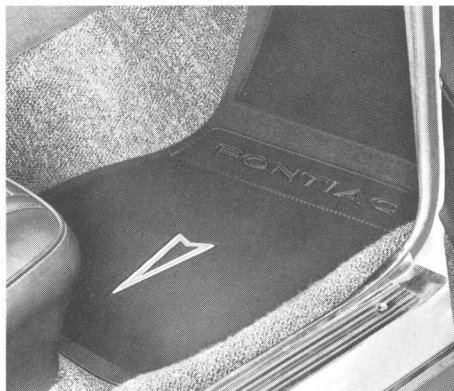
One or two pounds of effort is all you need for the easiest steering you'll ever experience. Makes driving, turning and parking a breeze. (F,D)

POWER WINDOWS (Code 551)

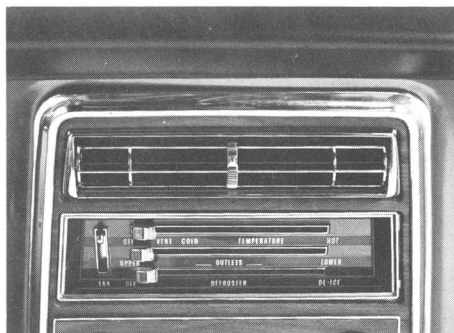
Gives the driver fingertip control of all vertical side windows from a single control panel at his side. Each window has its own control button. Inoperable when ignition is off. (F)



Custom Seat Belts



Floor Mat



Custom Air Conditioner

LAMPS

LUGGAGE LAMP (Code 401)

Lights automatically when trunk lid is lifted. Permits free use of both hands for loading and unloading luggage at night. (F,D)

IGNITION SWITCH LAMP (Code 402)

Illuminates the ignition switch area for greater convenience and easier location of key slot. (F)

UNDERHOOD LAMP (Code 421)

Unit similar to Luggage Lamp, but located under engine hood. (F,D)

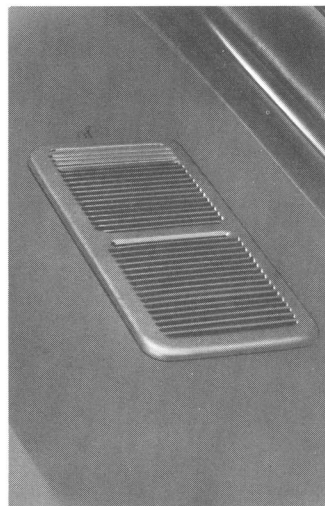
COMFORT

CUSTOM AIR CONDITIONER (Code 582)

It's combined with heater to give full range comfort control. It heats and cools air, reduces humidity, limits window fogging and filters the air. Lets you ride in cool or warm, cleaner, noise-free comfort. (F)

REAR WINDOW DEFOGGER (Code 374)

A blower under the rear package shelf channels air through a grille to the rear window. Helps give you a clearer view all the time. Not available on Convertibles. (F,D)



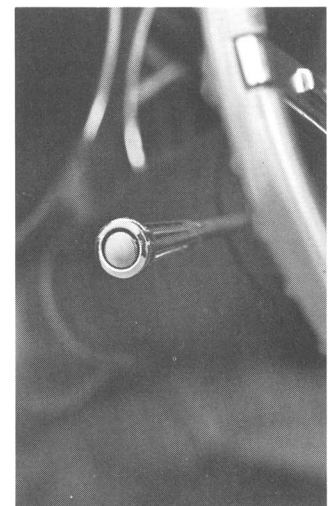
Rear Window Defogger



Pushbutton AM-FM Radio



Fold Down Rear Seat



Cruise Control

SOFT-RAY GLASS (Code 531)

Reduce glare and enjoy more comfortable driving with fully tinted windows. The upper area of the windshield is shaded for added glare reduction. Recommended with air conditioning. Also available in windshield only. (Code 532) (F)

CRUISE CONTROL (Code 441)

Maintain a selected speed automatically by depressing a button located at the end of your turn signal indicator lever. Cruise Control releases to accelerator control with slightest brake pressure. Great for turnpike driving. Available only with Turbo-Hydra-Matic or automatic transmissions, V-8 engines. (F,D)

SAFEGUARD SPEEDOMETER (Code 442)

Warns of excess speed. Control knob lets you select desired speed. Buzzer signals when car exceeds this speed. (F)

CONVENIENCE

FOLD DOWN REAR SEAT (Code 654)

Fully carpeted seat back adds convenience when you want to carry bulky objects. (D)

POWER CONVERTIBLE TOP (Code 544)

Fold top down or put it up without leaving the driver's seat. The control is on the instrument panel. (F)

ELECTRIC CLOCK (Code 474)

Floor mounted, it has a sweep second hand and a built-in automatic self-regulator. Dial is illuminated for easy night reading. (F,D)

REMOTE-CONTROL OUTSIDE MIRROR (Code 394)

Mounts on left-hand door. Convenient and easy to adjust from inside car. (F)

VISOR VANITY MIRROR (Code 391)

Mounts on back of visor. Out of sight when not in use. Ideal for checking makeup, combing hair, etc. (F,D)

RADIOS, REAR SPEAKERS STEREO TAPE PLAYERS

PUSHBUTTON RADIO AND MANUAL ANTENNA (Code 342)

Superior tone and fidelity. Completely transistorized. Wide dial provides space for precise tuning. (F,D)

PUSHBUTTON AM-FM RADIO WITH MANUAL ANTENNA (Code 344)

Offers dual listening enjoyment on either AM or FM frequencies. Completely transistorized. Pushbuttons can be set to either AM or FM or combinations of both. Unusually fine quality and fidelity. (F,D)

REAR SPEAKER (Code 351)

Brilliant tone and depth control. Fader switch lets you play front, rear or both speakers. (F,D)

DELCO STEREO TAPE PLAYER (Code 354)

Mounted under the instrument panel with or without console. The Delco Stereo Tape Player comes with two rear speakers, plus two front speakers. It's available only with any of the several radio options. It has its own built-in amplifiers and plays the new 8-track Stereo Tape Cartridges. It has a "Balance" control that lets you vary the volume between the front and rear speakers. It also has a track selector and tone and volume controls. Not available on heaterless cars, or cars with air conditioning, electric clock or manual transmission with floor shift. (F,D)

STEREO MULTIPLEX ADAPTER

Used with AM-FM Radio, has two front and two rear speakers. Passengers completely surrounded by sound. Light indicates when FM station is broadcasting a Multiplex signal. Can be used with Delco Tape Player. (D)

STEERING WHEELS

DELUXE STEERING WHEEL (Code 462)

Horn activator bars recessed into each of the two wheel spokes. Included in Custom Option. (Order by trim number.)

CUSTOM SPORTS STEERING WHEEL (Code 471)

Handsome "just-like-wood" appearance. Has three equally spaced, brushed stainless steel spokes. Horn button in center. (F)

TILT STEERING WHEEL (Code 504)

Adjusts to seven different positions for individual driving comfort. Permits easier entry and exit, better visibility for shorter people. Not available with standard steering, 3-speed column shift or Turbo Hydra-Matic without console. (F)

MISCELLANEOUS

SAFE-T-TRACK DIFFERENTIAL (Code 731)

Minimizes the hazard of getting stuck. Power is directed to the driving wheel with the best grip on the road surface. Sure handling through rutted roads, on sand or gravel, over bumps or chuck holes, through heavy snow, on wet or icy roads. (F)

RALLY STRIPES (Code 491)

Get the sports car appearance. Rally stripes go from rear wheel opening to front opening. Available in red, white or black. Standard on Firebird HO. (F)

RALLY GAUGE CLUSTER AND HOOD-MOUNTED TACHOMETER (Code 444)

Provides gauges for engine temperature, oil pressure and ammeter in place of indicator lights. Positioned with fuel gauge. Includes Code 704 tachometer. (F)

TACHOMETER (Code 704)

New hood-mounted design, installed outside the car in front of the windshield, in line with the driver. Offers easy, instant reading—minimum of distraction. (F,D)

CUSTOM GEARSHIFT KNOB (Code 524)

Extra-large, walnut shift knob for floor shift manual transmissions. Good looking, fits your hand. (F,D)

TRANSMISSION CONSOLE (Code 472)

Available with bucket seats and floor shift. Finished with wood grain appearance. On both 3- and 4-speed manual transmission, the standard shift knob features a shifting diagram. (F)

DUAL EXHAUSTS (Code 481)

Cuts down back pressure in exhaust system, adds to engine efficiency. Available on 326 V-8 regular fuel engine only. Standard on HO and 400. (F)

EXHAUST TAILPIPE EXTENSIONS (Code 482)

Two gleaming exhaust "splitters" for dual exhaust systems: one "splitter" for 6 cylinder OHC engine. (F,D)

RIDE AND HANDLING PACKAGE (Code 621)

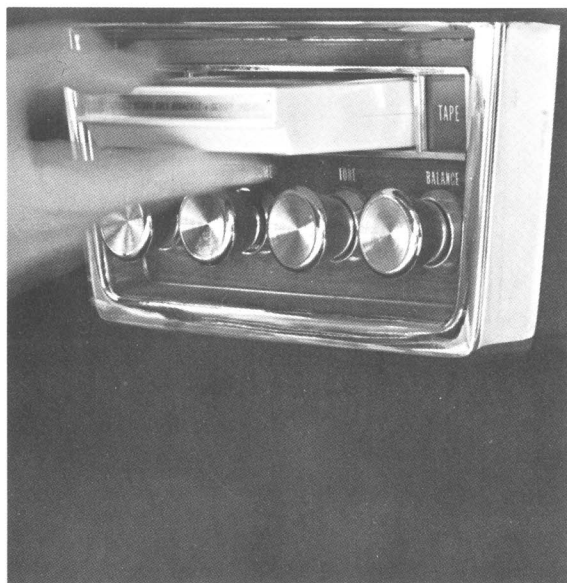
Higher rate front and rear springs, stiffer shock absorber action gives true sports car roadability. (F)

CUSTOM FRONT AND REAR SEAT BELTS (Code 431)

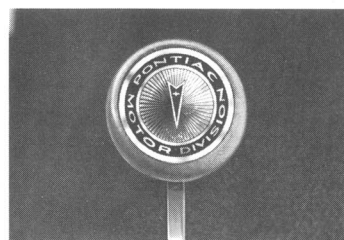
Custom Seat Belts with pushbutton buckle releases and retractors in front seat, no retractors in rear seat. Seat belt colors harmonize with interiors. (F)

FRONT SEAT SHOULDER STRAPS (Code 434)

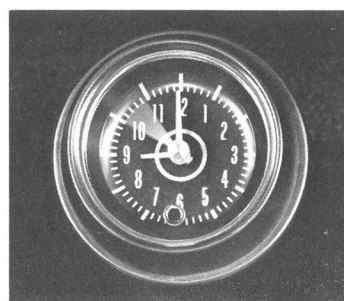
Give extra security by keeping the torso erect in case of sudden stops. Available with all seat belts for driver and front seat passenger. One end is anchored to the floor, the other end is anchored at the roof rail above the driver or passenger, on all models except convertibles, where it anchors at the rear, inner quarter panel. The shoulder strap is worn diagonally across the torso in conjunction with your seat belt. It has a pushbutton buckle release. (F)



Delco Stereo Tape Player



Custom Gearshift Knob



Electric Clock



Transmission Console

FRONT DISC BRAKES (Code 521)

Air flows around the outside surfaces of the discs and integrally cast internal cooling fins force air between disc surfaces, helps keep them cooler and fade-resistant. Limiting valve adjusts initial line pressures for smooth, even stops. Power brakes (Code 502) recommended. (F)

HOOD RETAINERS

Dual stainless steel posts keep the hood secure. Chrome finished. (D)

DUAL HORNS (Code 494)

Emit a loud, commanding sound. Available on all cars, standard with Custom Option. (F,D)

CUSTOM TRIM

VINYL ROOF (Top No's. 1, 2 and 7)

Comes in your choice of white, black or cream. A handsome addition to any sport coupe's roof.

CUSTOM OPTION

(Order by Trim Number.)

Includes all-expanded Morrokide interiors, full length molded vinyl door trim panels with integral armrests, instrument panel assist grip, recessed door handles and carpeted scuff panels. Deluxe steering wheel, front and rear wheel opening moldings, bright interior roof rail and windshield garnish molding (hardtop coupe only), deluxe wheel covers and dual horns. (F)

STRATO-BENCH FRONT SEAT

Attractive, thin profile bench seat with folding center armrest and individual backrests, available in hardtop coupe only. Order by trim number. (F)

HEAVY-DUTY OPTIONS

HEAVY-DUTY FAN (Code 684)

Gives increased cooling at lower car speeds. For Firebird or Sprint only. (F)

HEAVY-DUTY THERMOSTATICALLY CONTROLLED FAN (Code 514)

Available for 326 and HO, this fan gives increased cooling at low speeds and saves power by disengaging when engine temperature is low. (F)

HEAVY-DUTY ALTERNATOR (Code 674)

55 amp. alternator for use when greater than usual power output is needed. Includes 61 amp. hr. heavy-duty battery. Standard with air conditioning. (F)

HEAVY-DUTY RADIATOR (Code 681)

Larger capacity gives increased cooling for extreme operating conditions. Standard with air conditioning. (F)

DUAL STAGE, HEAVY-DUTY AIR CLEANER (Code 361)

Dual filter design consists of wetted paper inner filter surrounded by a special polyglycol wetted polyurethane foam outer filter. These two filters give finer filtration, extended service. (F,D)

HEAVY-DUTY BATTERY (Code 678)

This 61 amp. hr. battery provides longer life, greater power and increased cranking ability. Keeps your power accessories operating efficiently. (F,D)

RALLY II WHEELS (Code 453)

These are specially styled. 14-inch steel wheels with a center emblem. They have a stainless steel trim ring and chrome wheel nuts. Available with Front Wheel Disc Brakes. (F)

RALLY I WHEELS (Code 454)

Large openings provide maximum cooling for brakes. Includes stainless steel full trim ring, unique center wheel cap and chrome plated wheel nuts. Available with Front Wheel Disc Brakes. (F)

DELUXE WHEEL DISCS (Code 461)

Pontiac Deluxe disc spinner is made of chrome-flashed stainless steel with radial ribs and cutouts. A red plastic insert forms the center hub ornament with "PMD" letters framed in chrome. (F,D)

CUSTOM WHEEL DISCS (Code 458)

Made of chrome-flashed stainless steel with gray matte finish; black matte panels are surrounded with gleaming chrome. A spinner adds a look of ruggedness. The center of the spinner is black plastic insert with red "PMD" letters framed in chrome. (F,D)

WIRE WHEEL DISCS (Code 452)

For that special flair and sports car look. Gleaming wire spokes handsomely styled and structurally strong. (F,D)



MARK OF EXCELLENCE

Pontiac Motor Division General Motors Corporation

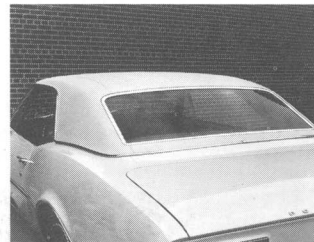
Pontiac Motor Division of General Motors Corporation reserves the right to make changes at any time, without notice, in prices, colors, materials, equipment, specifications and models, and also to discontinue models.



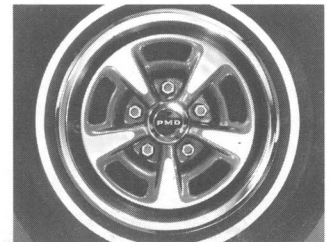
Custom Option



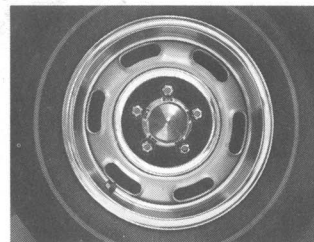
Strato-bench Seat



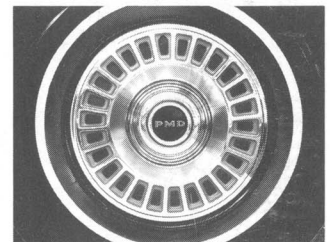
Vinyl Roof Top



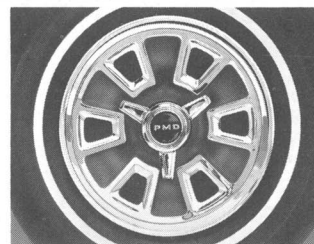
Rally II Wheels



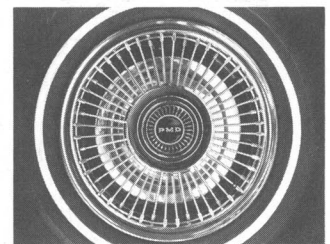
Rally I Wheels



Deluxe Wheel Disc



Custom Wheel Disc



Wire Wheel Disc