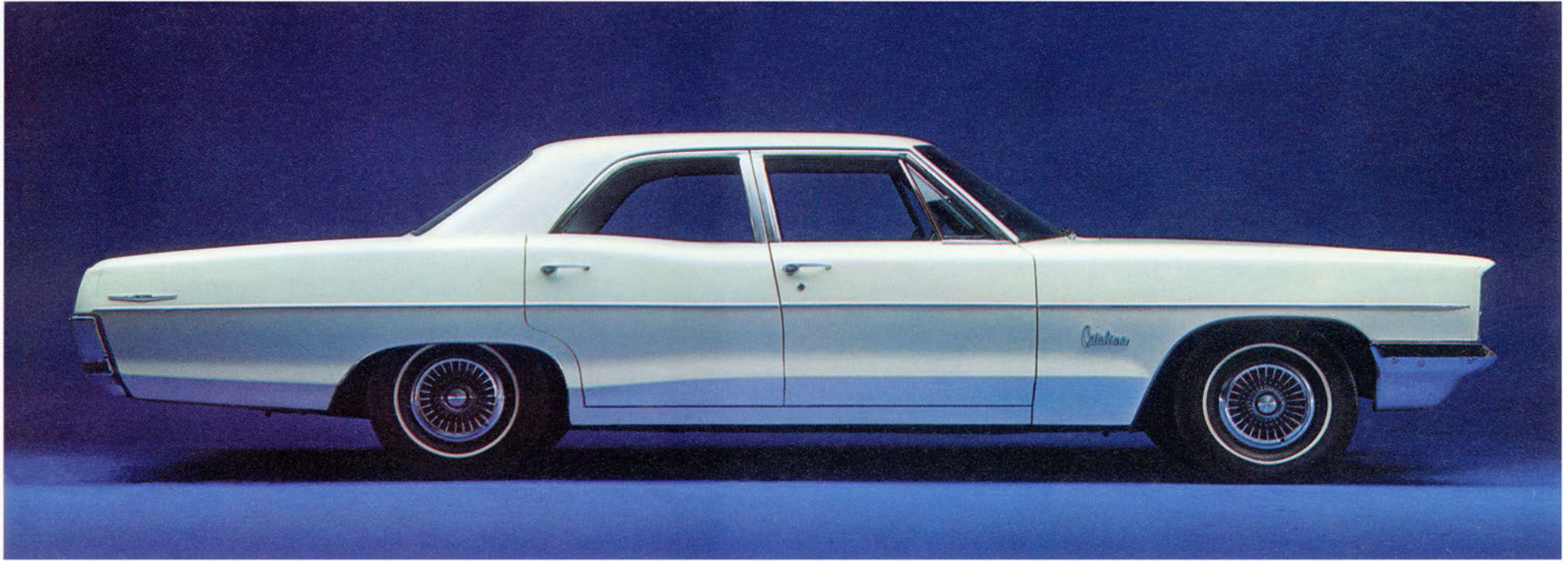
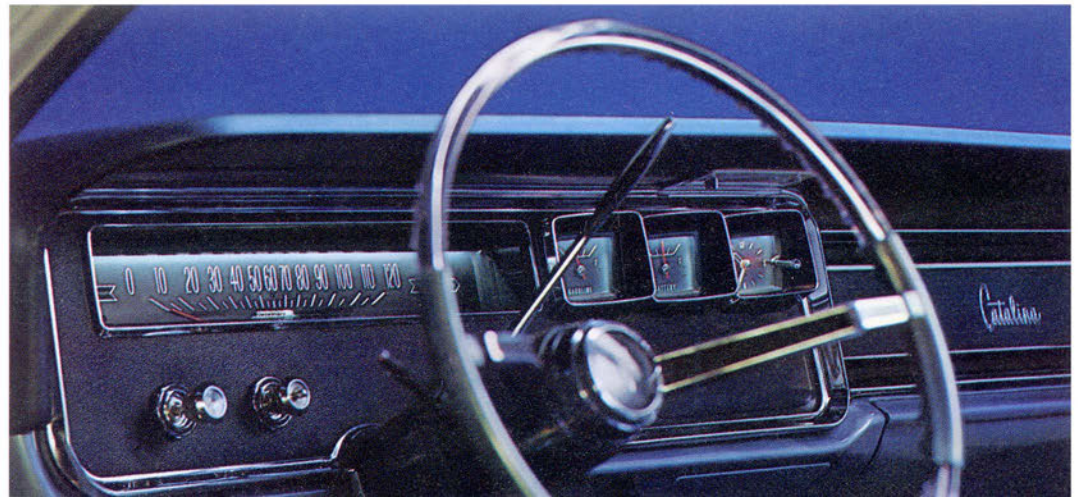
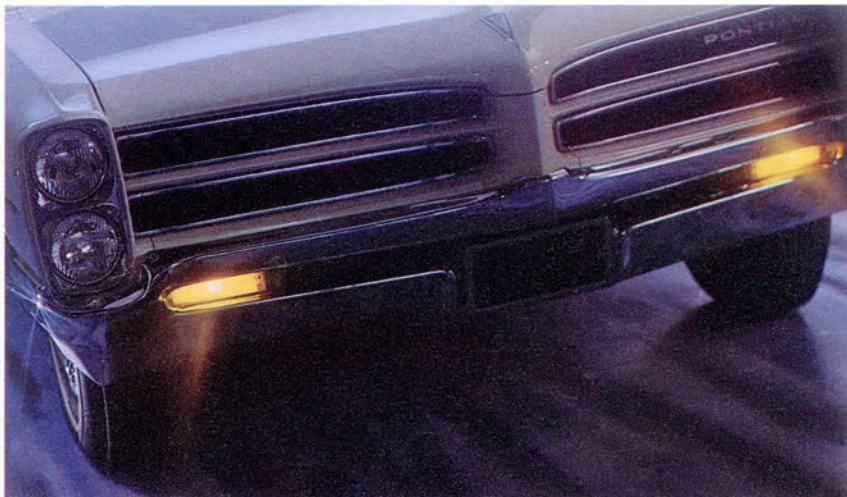


**Why buy a low-priced car
when you can buy a high-priced car
for the same money?**





Longer, Bigger, Heavier. For smoother ride. Catalina—121" wheelbase; 214.8" overall length; 3988 lbs. curb weight. (Three low-priced cars have the shorter 119" wheelbase, shorter overall lengths—ranging from 209.8 to 213.2 inches, and less weight.)



Wide-Track. Exclusively Pontiac. Exceptional handling and stability—especially when cornering, in strong crosswinds and on rough roads.



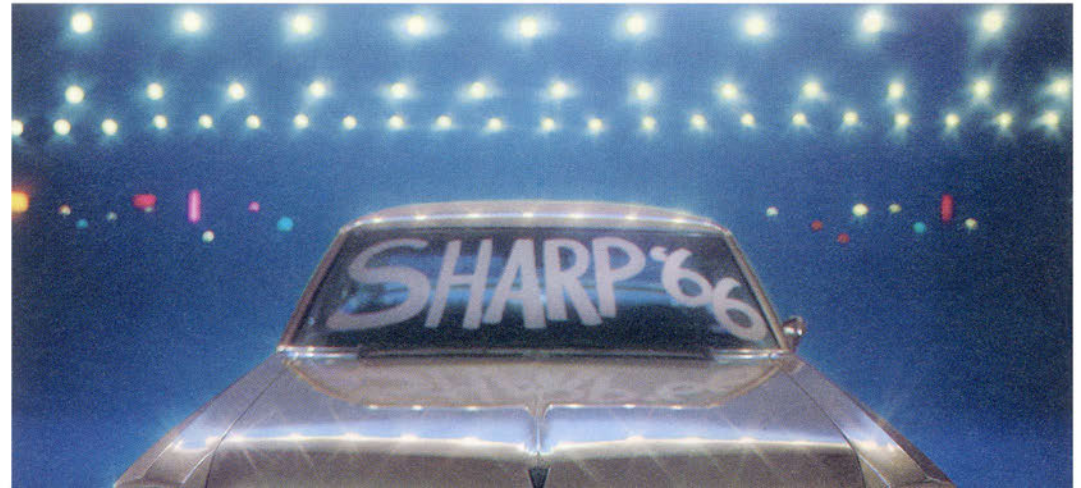
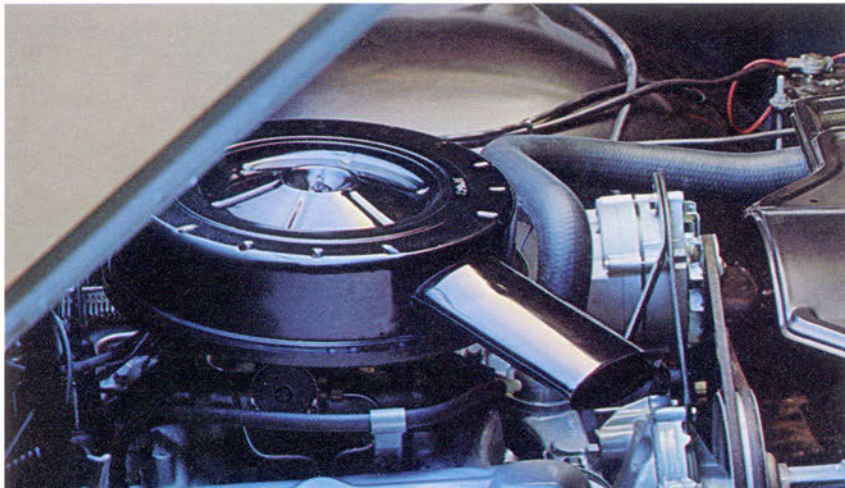
More Usable Luggage Space. Catalina packs 19.2 cubic feet of usable luggage capacity.

Catalina's Classic "Canted" Instrument Panel.

Easier-to-see instruments set stylishly in a beautiful, color-keyed, pebble grained dash.



High-Priced Car Quality. Inside as well as out. (Roomy and sumptuous interiors are hallmarks of all Catalinas.)





Big V-8. Catalina standard engine—256-hp V-8. 290-hp V-8 standard with extra-cost Turbo Hydra-Matic transmission. Ford Galaxie 500 standard V-8 engine, for example, has only 200 hp—even with extra-cost Cruise-O-Matic transmission. (Optional 250-hp engine available at additional cost.)



Great Resale Value. Year after year, the record book shows Catalina with one of the best resale values in the industry. Which probably helps account for the fact that Pontiac's been third in sales for six straight years. And that's nice accounting in anybody's book, wouldn't you say? We would.

Pontiac Motor Division



**Are you getting all this
in your low-priced car? If not,
move into a high-priced car.
We'll show you four great ways.
All under \$3,000*.**

1. Catalina 2-Door Sedan.
2. Catalina 4-Door Sedan.
3. Catalina Hardtop Coupe.
4. Catalina 4-Door Hardtop.

As for price . . .
here's an example of what we mean!

	PONTIAC CATALINA 4-DOOR SEDAN	FORD GALAXIE 500 4-DOOR SEDAN
Manufacturer's Suggested Retail Price	\$2831.00*	\$2783.54*
V-8 Engine	Standard (389 cu. in., 256 hp)	\$58.87 (352 cu. in., 250 hp)
Electric Clock	\$15.74	Standard
Decor Window Mouldings	\$27.87	Standard
Dual-speed Wipers	Standard	\$12.95
Deluxe Wheel Discs	\$16.85	\$21.34
Deluxe Steering Wheel	\$14.21	Standard
Whitewall Tires	\$39.92 (8.25 x 14)	\$33.33 (7.75 x 15)
	\$2945.59*	\$2910.03*

*Manufacturer's suggested retail prices include excise tax and suggested dealer delivery and handling charges. Transportation charges, state and local taxes, accessories and optional equipment additional.

See your nearest Pontiac dealer for a
Wide-Track Pontiac Catalina
(A big, powerful Pontiac for less than \$3,000.*)

**When you're spending the same money
for a low-priced car and not getting all these
Pontiac Catalina features,
then you're spending too much!**

**PONTIAC MOTOR DIVISION
GENERAL MOTORS CORPORATION
PONTIAC, MICHIGAN**

