

1946 PONTIAC

finest

OF THE FAMOUS "SILVER STREAKS"



[Faint, illegible handwritten text]



the 1946 PONTIAC

Your first impression of the big, new 1946 Pontiac is that here is a car of outstanding beauty. Its clean, sweeping lines accentuate its length and size. Every detail of design adds to its stunning beauty. But its extra value is even more evident when you

open the wide doors and get a glimpse of the luxurious interior. Here again, every detail of appointment adds up to comfort and luxury unmatched in its price class, and gives you the beauty of custom-type appointments at low cost.



LUXURIOUS AND ROOMY INTERIORS

Pontiac interiors are roomy, comfortable and in trim good taste. Soft, pleasing colors and smart hardware combine with plenty of elbow and headroom to add to passenger comfort.

Upholstery is rich and luxurious. Ash trays and built-in arm rests are another "plus value" feature of all Pontiac models.

The smart instrument panel of the 1946 Pontiac is modern in both design and utility. Instruments are easy to see and are conveniently grouped. Driver or rider, Pontiac interiors invite you to step in for unparalleled luxury and comfort. (Deluxe steering wheel, radio, heater and clock are accessories available at extra cost.)



STRIKING BEAUTY...UNMATCHED DEPENDABILITY... *Brilliant* PERFORMANCE!

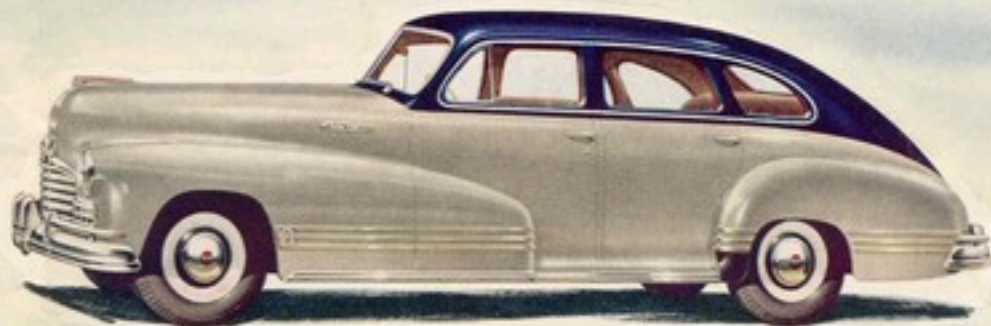


Never before has Pontiac so greatly enhanced its reputation for smart appearance, trouble-free operation and fine performance. Truly the Finest of the Famous "Silver Streaks," the 1946 Pontiac has been greatly improved inside and out.

Whether you choose the 1946 Pontiac as a Six or an Eight, you can be sure of more quality than Pontiac has ever offered in any previous model.

Important improvements in clutch, carburetor, cooling system and manifolding have been made with one aim in mind—to make the 1946 Pontiac even more dependable, better performing and more economical than ever, thus maintaining Pontiac's tradition of extra value.

With all its time-proved mechanical features plus its new refinements, with all its beauty, luxury and "tremendous trifles" which add to motoring pleasure, the 1946 Pontiac is the finest of all.



1946 Pontiac Streamliner 4-Door Sedan
(Bumper Guards, White Side Wall Discs and Two-Tone
Color Combination optional at extra cost)

1946 Pontiac Streamliner 2-Door Sedan
(Bumper Guards and Rear Fender Panels shown are optional
equipment available at extra cost)



1946 Pontiac... Finest of the Famous "Silver Streaks"

FOR REAL LUXURY...AT LOW COST

...CHOO



1946 Pontiac Torpedo 2-Door Sedan

SMART NEW COLORS RICH INTERIORS

Pontiac's new 1946 colors are as smart as Pontiac's new design. Standard body colors are Silver Wing Gray, Mariner Blue, Smoked Pearl, Parma Wine, Black and Catalina Cream. Two-tone color combinations available at slight extra cost include Light Gray and Blue and Light and Dark Gray. Upholstery materials are Novelty Weave Tan Wool Cloth for the Torpedo and Rendezvous Gray Broadcloth with smart Twin-Pin Stripe for the Streamliner. The Convertible Coupe offers a choice of Genuine Hand-Buffered Colonial Grain Leather in Black, Red, Green, Blue or Tan or combination Leather and Whipcord, with top material in Black or Natural. The Standard Station Wagon is upholstered in Rich Tan Imitation Leather and the DeLuxe in Genuine Red Leather and Wool Cloth.

SE **PONTIAC** FOR 1946



1946 Pontiac Torpedo Sedan Coupe

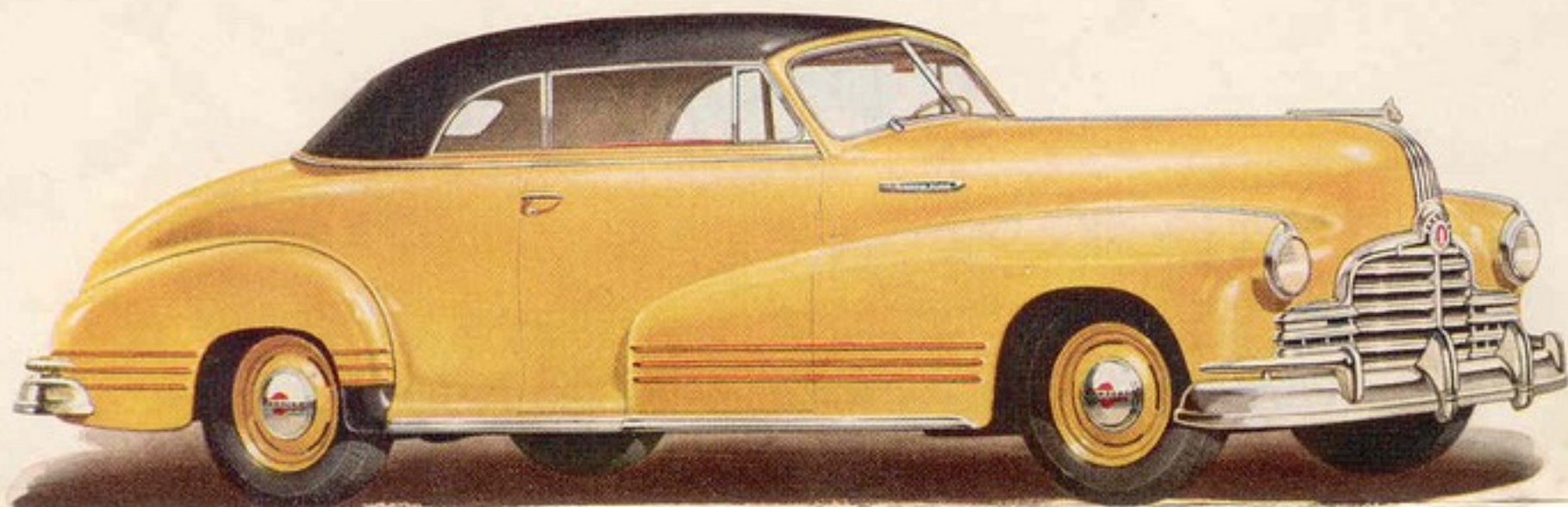
(Two-Tone Color Combinations and Bumper Guards Optional on All Models at Extra Cost)



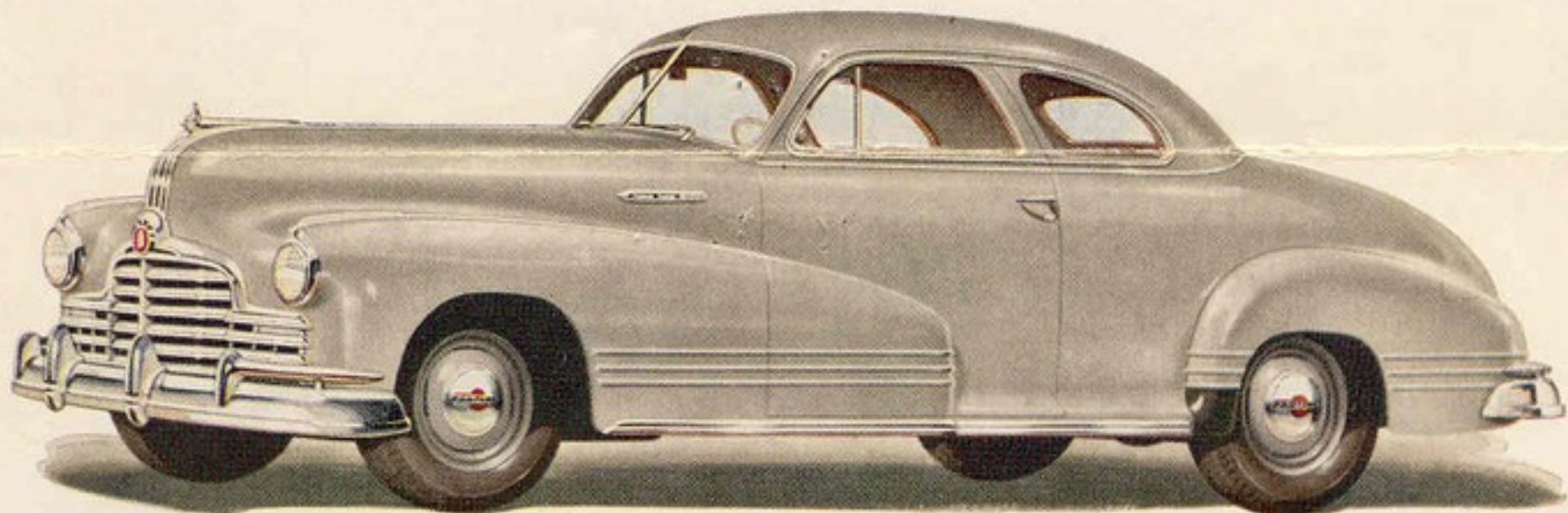
1946 Pontiac Torpedo Business Coupe



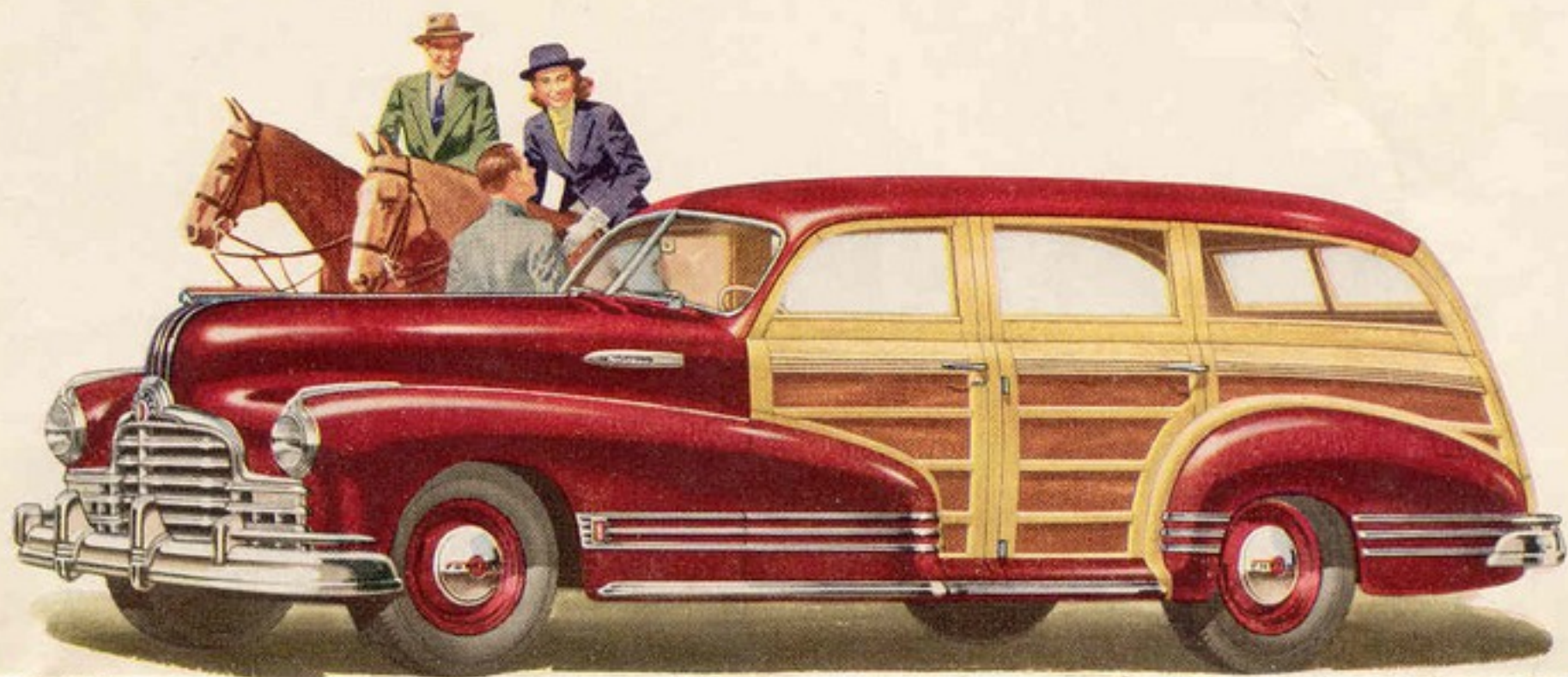
1946 Pontiac Torpedo 4-Door Sedan



1946 Pontiac Torpedo Convertible Coupe



1946 Pontiac Torpedo Sport Coupe



1946 Pontiac De Luxe Streamliner Station Wagon

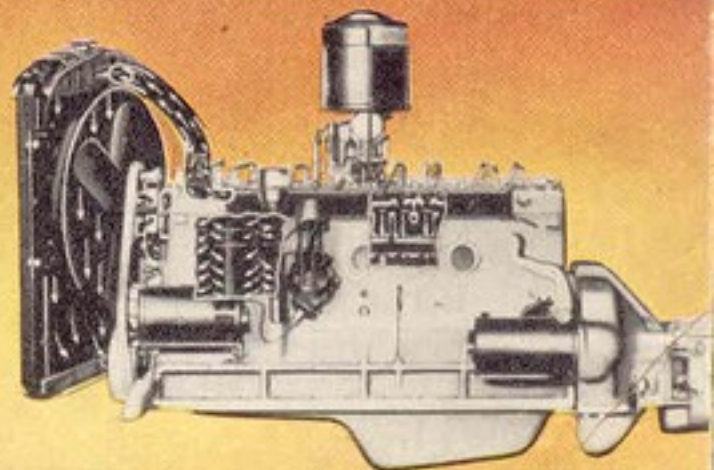
QUALITY ENGINEERING AND SOUND MANUFACTURE

Pontiac's reputation for trouble-free performance is the result of advanced engineering and good craftsmanship. From drawing board to assembly line, Pontiac is designed and built to give mile after mile of trouble-free, economical performance, as the experience of owners has proved over and over again.

PISTONS—Pontiac's electroplated alloy iron pistons are made of the same material as the engine block to provide equal expansion. Piston pins are now given a shot-peening process to increase life.

DUFLEX SPRINGING—Duflex rear springs form the basis of Pontiac's famous easy ride. With Duflex rear springs light and heavy loads are compensated for mechanically. Liners eliminate squeak.

ALL-WEATHER TEMPERATURE CONTROL—Assures efficient operation by means of pressure cooling, full-length water jackets, gusher valve cooling, water recirculation and automatic thermostatic temperature control.



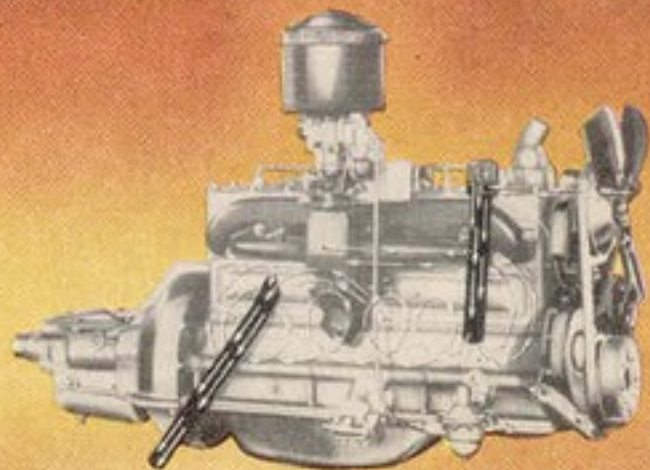
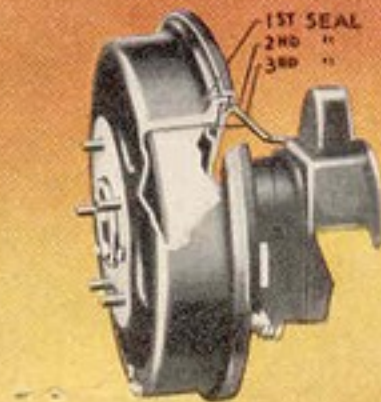
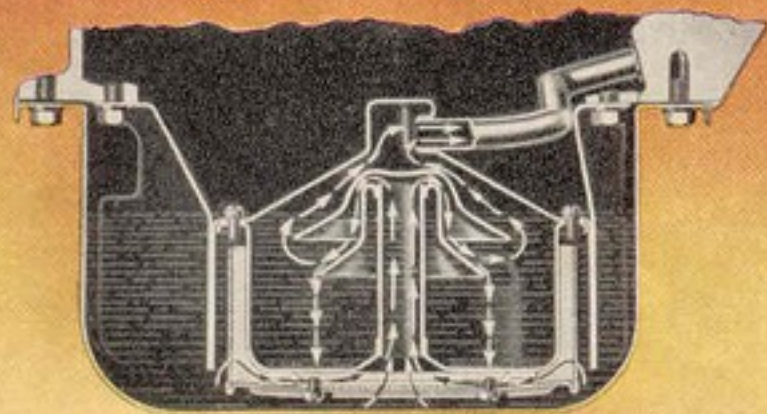
TURING FOR DEPENDABILITY AND ECONOMY

Many Pontiacs have been driven 100,000 miles and more with unbelievably little care and expense. New mechanical improvements combined with scores of time-proved features prove that in operating economy and dependability the 1946 Pontiac brings new perfection to its price class.

PERMANENT OIL CLEANER—Pontiac's long life is due in part to the famous Full-Flow, Built-In, Permanent Oil Cleaner. It automatically gives positive protection against dirt and grit and never needs replacing.

TRIPLE-SEALED BRAKES—Pontiac's self-energizing hydraulic brakes are triple-sealed to keep out water, dirt, dust and slush. You get quicker, smoother stops with appreciably longer brake-lining life.

PRESSURE-SUCTION crankcase ventilation removes injurious gases from crankcase and full-pressure lubrication to every vital engine part assures longer engine life and more economical operation.



S P E C I F I C A T I O N S

ENGINE—6 cyl; L-Head; bore and stroke $3\frac{5}{16}$ " x 4"; piston displacement 239.2 cu. in.; max. h.p. 90; comp. ratio 6.5 (7.5 optional); 86.5 lb. counterweighted crankshaft. 8 cyl.; L-Head; bore and stroke $3\frac{1}{4}$ " x $3\frac{3}{4}$ "; piston displacement 248.9 cu. in.; max. h.p. 103; comp. ratio 6.5 (7.5 optional); 80.5 lb. counterweighted crankshaft; Harmonic vibration dampener; chrome nickel alloy pistons; full pressure lubrication; rifle-drilled connecting rods; permanent, precipitation type oil cleaner; gusher valve cooling; tapered valve guides; water around all valves. **ELECTRICAL**—Delco-Remy; fully automatic control; 15-plate Delco battery; current and voltage regulator. **FUEL SYSTEM**—Mechanical fuel pump; air cleaner and silencer; single triple-venturi carburetor on 6, dual type on 8; automatic choke; 17 gal. tank; manifold heat control. **CLUTCH**—Single disc, $9\frac{1}{2}$ " dia.; ball release bearing. **TRANSMISSION**—Synchromesh, semi-automatic. **FRAME**—Straight

"X" cantilever type. **WHEELBASE**—Streamliner, 122" ($210\frac{1}{4}$ " overall); Torpedo, 119" ($204\frac{1}{2}$ " overall). **STEERING GEAR**—19:1 ratio; 18 in. wheel; link parallelogram control with worm and roller gear. **AXLES**—Front, link parallelogram type knee-action; rear, semi-floating, hypoid gear. Standard axle ratio, 4.3 to 1 on the Streamliner series, 4.1 to 1 on the Torpedo; economy axle (3.9 to 1) or mountain axle (4.55 to 1) optional at no extra cost. **BRAKES**—Multi-sealed, Duo-Servo hydraulic; moulded linings; emergency brake on rear wheels. **SPRINGS**—Duflex variable rate leaf spring in rear; suspension coil type in front; Delco-Lovejoy shock absorbers front and rear. **GENERAL**—Dual windshield wipers, dual horns, dual sun visors and dual tail lamps; cigar lighter; front and rear ash trays; automatic interior lighting; dash-controlled hood lock; automatic, non-interfering trunk door supports.

Pontiac Motor Division of General Motors Corporation reserves the right to make changes at any time, without notice, in prices, colors, materials, equipment, specifications and models, and also to discontinue models.

PRINTED IN U. S. A. 5-48

