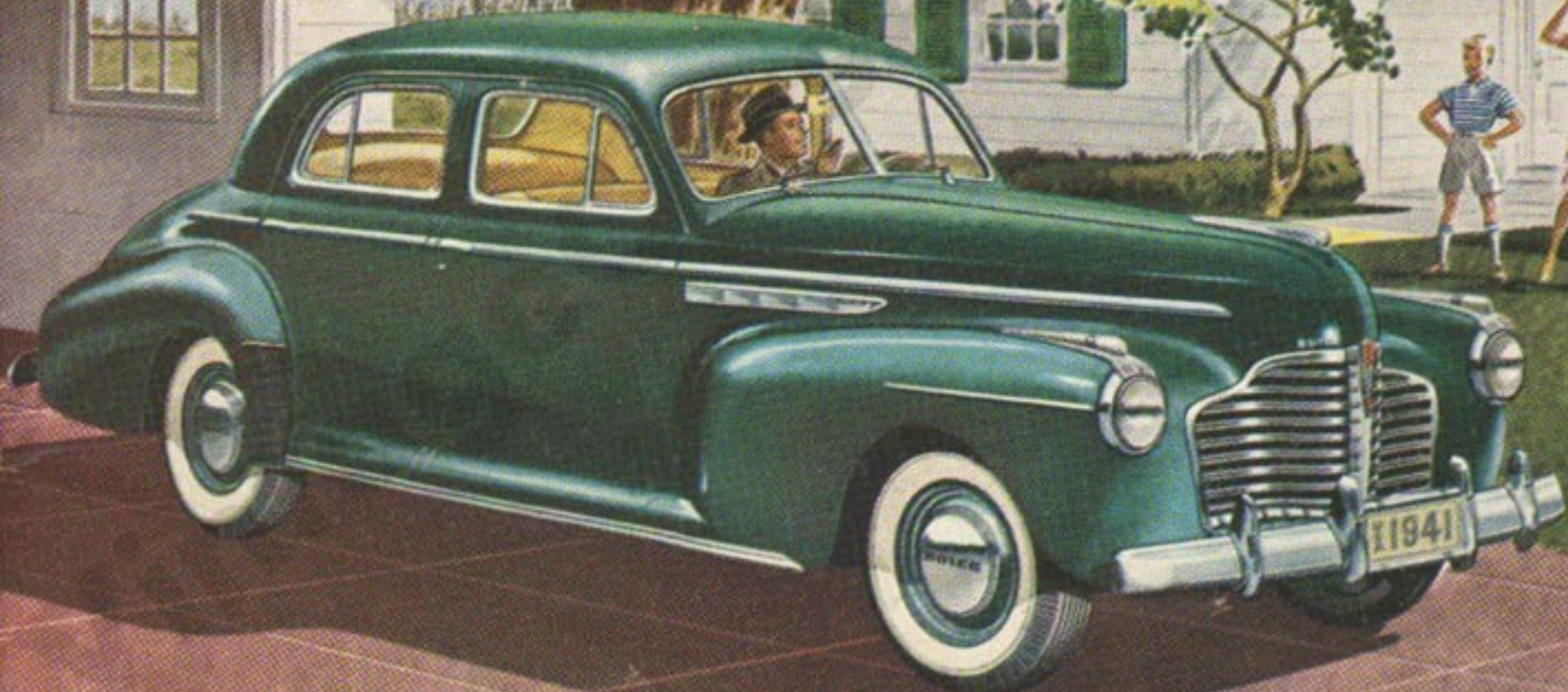


**Now You Won't Have
to Build a New Garage!**



Four New Buick *Specials* that Wrap up Big-Car Luxury in Compact Size

YEAR BY YEAR automobiles have been getting longer.

They've stretched so much they have actually begun to outgrow many home garages, not to mention curbside parking spaces!

Result: Many a family with big-car preferences has had to be satisfied with small-car power, performance, comfort and finish.

Into the breach now steps Buick with four new additions to its Buick SPECIAL Series.

They're true-blue Buick in every respect.

They're powered by big, 115-hp. Buick FIREBALL straight-right engines that can be stepped up to 125 hp. by the addition of Compound Carburetion.

They have Buick's torque-tube drive, coil-springing all around, Permi-firm steering and smart torpedo styling.

They have all of Buick's richness of interior finish and completeness of equipment, from Flash-Way Direction Signals and automatic lighters to dome lights that go on when the doors are opened.

But they fit small garages, park with ease and handle like dreams because they are six inches shorter, bumper to bumper.

And with any of these models you can have that long-wanted big-car action, comfort and pride of ownership—and still not have to enlarge the family garage.

From rich fabric to swiveling assist cord, here is truly fine interior finish and the utmost in convenience. The rich, wood-grained paneling is inset with plastic to harmonize with the looks of the handsomely executed controls. All models have Unionized Turrot Top Body by Fisher



Here's Style, Power, L Minimum Bumper-



MODEL 44 BUICK *Special* BUSINESS COUPE

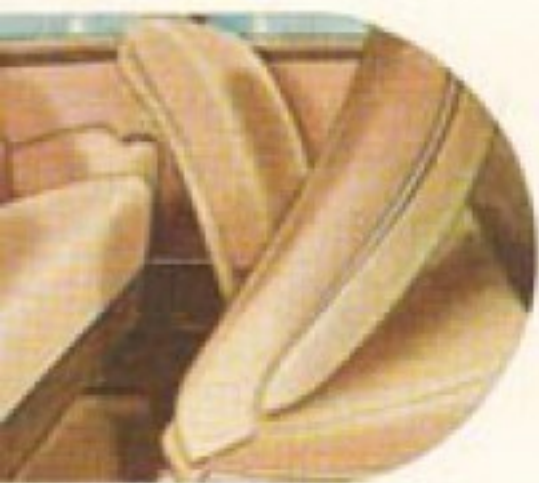
Here's a car that means business in any job you give it—roomy enough for three with all sorts of carrying space for packages, sample cases and the like behind the seat. Running boards are concealed under the wide, front-hinged doors, keeping them always dry and clean.



**"Best
Bu**

EXEMPLAR OF GENERAL MOTORS VALUE

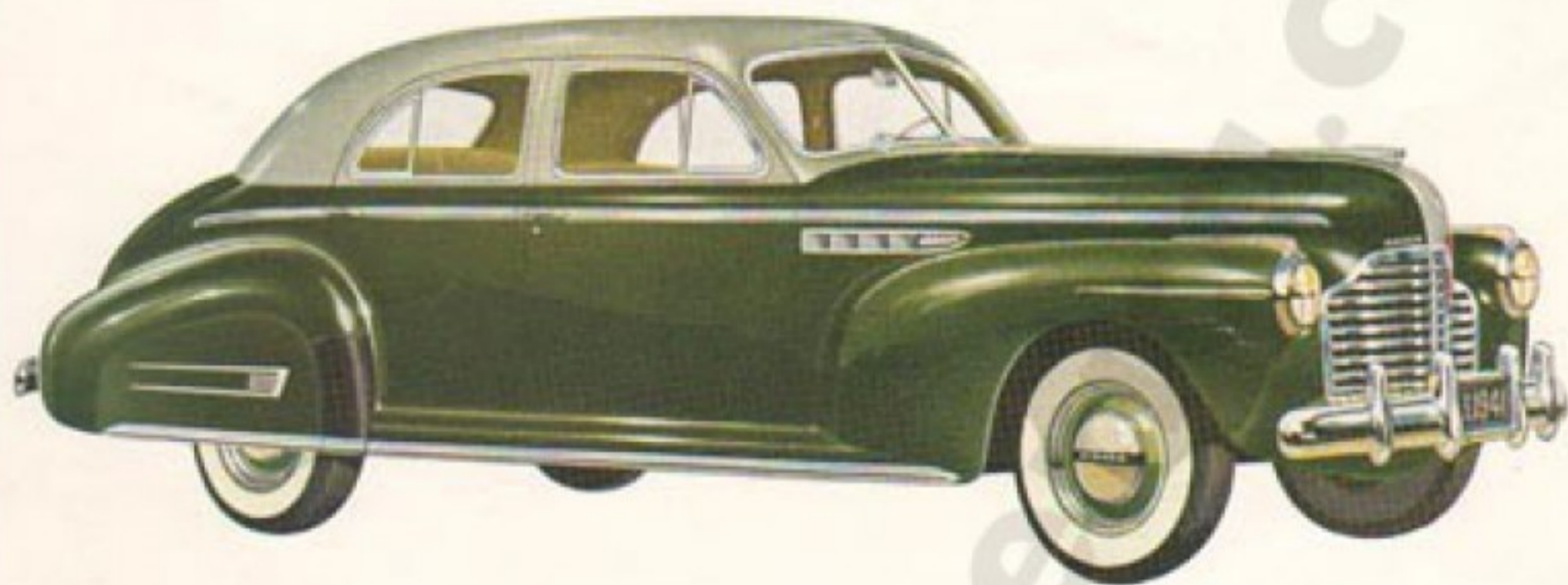
A full-width rear seat makes this sport coupe into a car approaching the utility of a sedan. Carrying six grown-ups comfortably, this is an ideal car for the family with young children, who will be far removed from any doors they can open. Front seat folds for easy access to the rear compartment.



MODEL 44S BUICK *Special* SPORT COUPE



Swiftness, Comfort in to-Bumper Length



MODEL 47 BUICK *Special* TOURING SEDAN

There's room for all the family in this six-passenger four-door sedan, and space for all their luggage in the roomy luggage compartment in the rear. A touch illustrating thoroughgoing Buick quality is the automatic switch in the door posts which throws on the dome light when the door is opened.



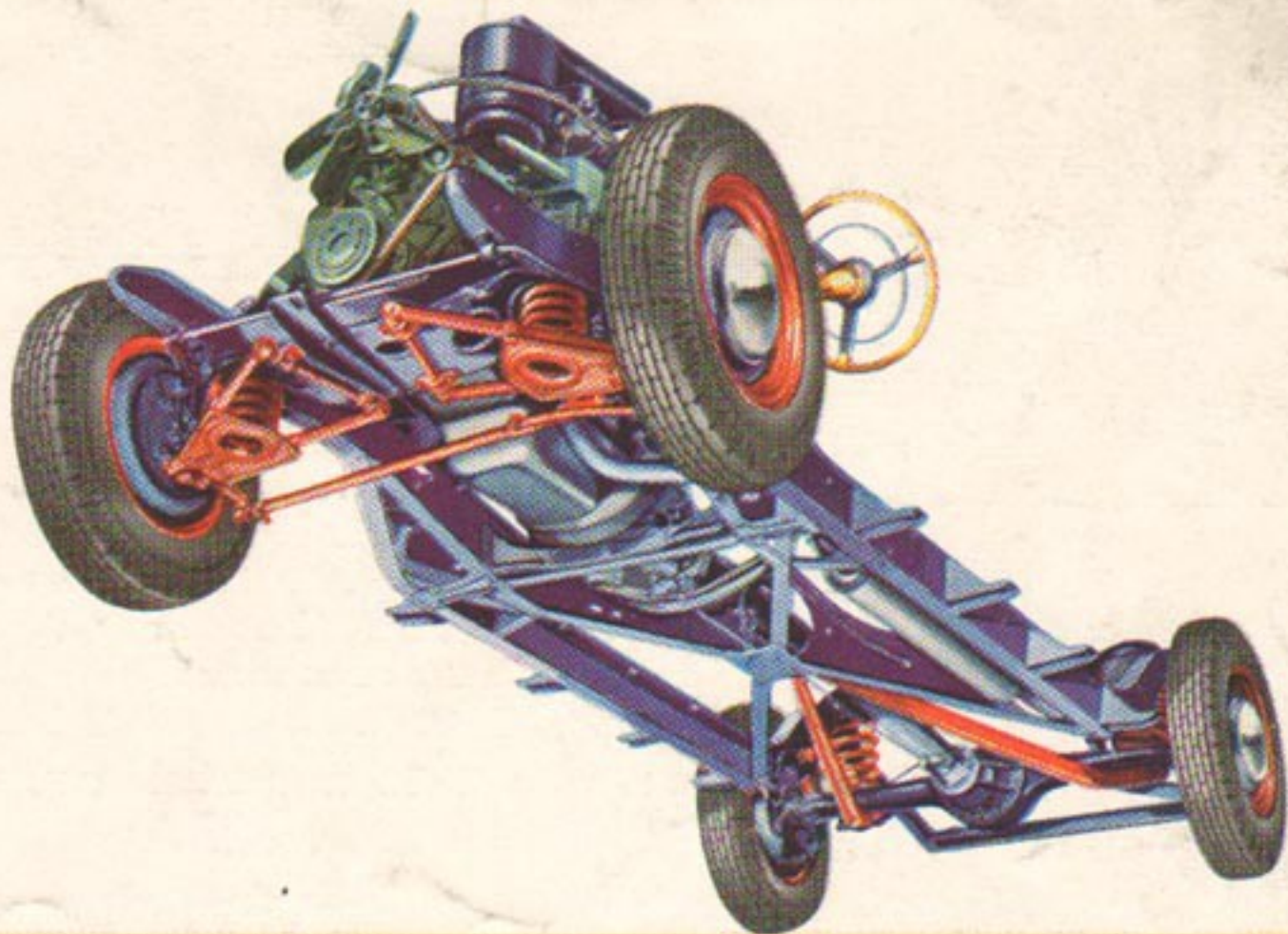
It
"Buick
Yet"

Yes, this trimly dashing convertible coupe has the famous Buick Press-A-Button Top, controlled by a small knob under the dash as sketched. Pull it with the engine running and the top folds down—push it in and the top comes up. With the full-width rear seat, there is room for six in this smart model.

MODEL 44C BUICK *Special* CONVERTIBLE COUPE



HERE'S the rugged under-structure of these four new additions to the Buick SPECIAL Series. Their chassis differs from the 121-inch wheelbase chassis only in that frame, torque tube and drive shaft have been shortened three inches to make a 118-inch wheelbase car. The standard engine is the 115-hp. Buick FIREBALL Dynaflash straight-eight. Compound Carburetion, which increases horsepower to 125 and gives even greater gas economy, is available at slight extra cost.



GENERAL CAR DIMENSIONS—Wheelbase, 118". Tread, front, 59 $\frac{1}{2}$ "; Tread, rear, 62 $\frac{1}{2}$ "; Height, maximum, at curb weight, 67 $\frac{1}{2}$ "; Width, maximum, overall, 75 $\frac{1}{2}$ "; Length, maximum, overall, 202 $\frac{1}{2}$ ".

BUICK VALVE-IN-HEAD STRAIGHT-EIGHT ENGINE—Bore and stroke, 3 $\frac{1}{2}$ " x 4 $\frac{1}{4}$ " inches. Displacement, 248 cubic inches. Exclusive Buick Fireball Compression. Compression ratio with single carburetor 6.5 to 1.0. Compression ratio with com-

ound carburetion 7.0 to 1.0. Full pressure lubrication to main, connecting rod, and camshaft bearings, and to rocker arms. Counterweighted crankshaft with torsional balancer. Filtered crankcase ventilation. Oil filter. Oil capacity (refill) 6 quarts.

FUEL SYSTEM—Dual down-draft aero-type carburetor. Compound carburetion op-

tional. Thermostatic heat control, automatic choke, automatic idle control. Intake silencer and air cleaner. Fuel and vacuum pump. Fuel filter. Concealed gas tank filler. Fuel tank capacity 18 gallons.

COOLING SYSTEM—Thermostat and Bypass Temperature Control; pressure relief valve in filler cap. Water capacity 15 quarts.

REAR AXLE—Semi-floating rear axle with hypoid gears. Torque tube drive. Rear axle ratio 4.1 to 1.0; optional 3.9 to 1.0. One universal joint automatically lubricated from transmission.

STEERING—Exclusive Buick Permi-Firm Steering; 19.8 to 1.0 steering ratio.

WHEELS AND TIRES—Demountable steel disc wheels. Tire size 15 x 6.50—4 ply.

WHEELBASE—118 inches.

SPECIFICATIONS

Buick Motor Division, General Motors Sales Corporation, reserves the right to make changes in specifications or equipment at any time without incurring any obligation to install them on cars previously sold.

PRINTED IN U.S.A. BY
 COYNE-WINTER-NEER INC., DETROIT
 L-20-41-150M