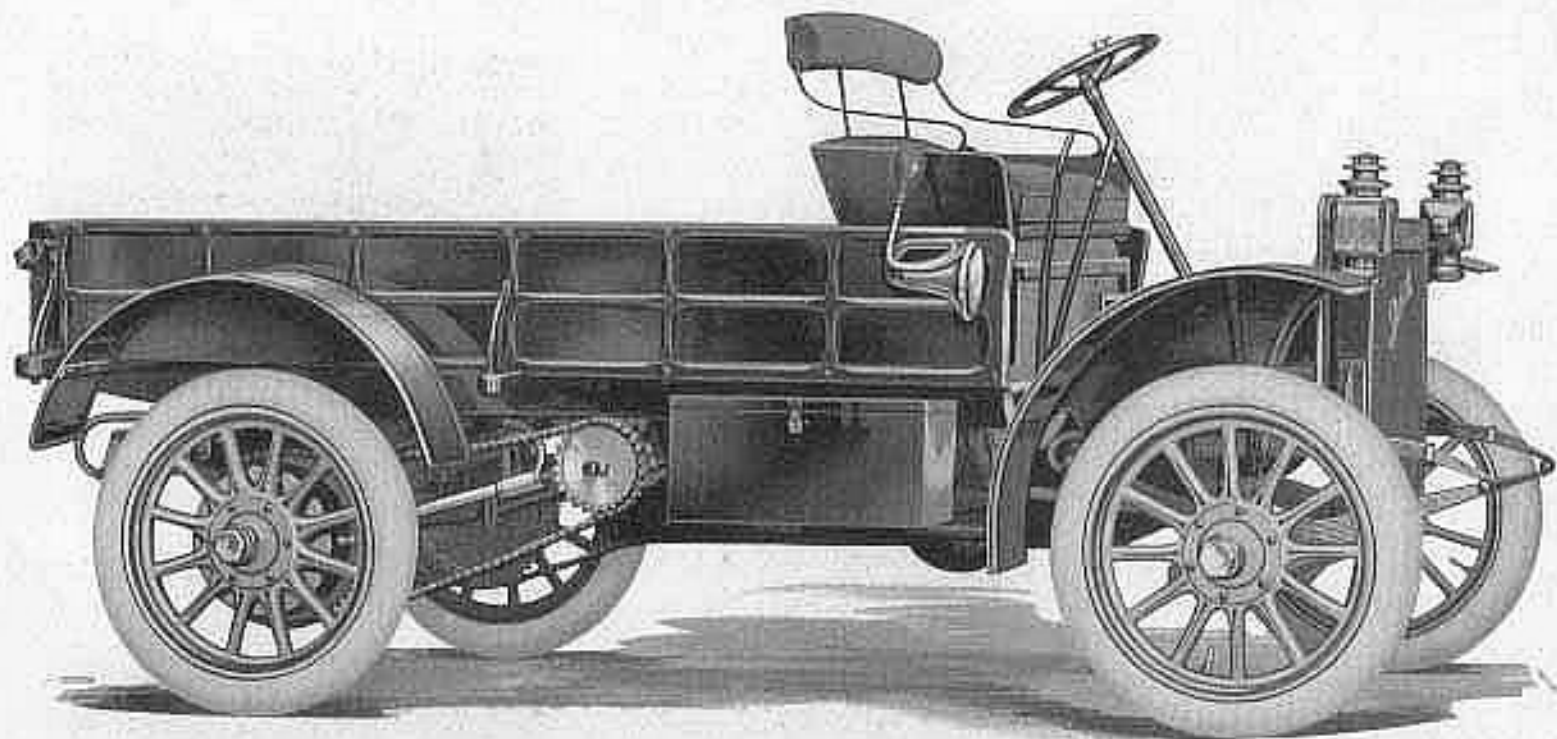


Buick

COMMERCIAL CARS

Buick

Standard Open Express Body, No. A-2

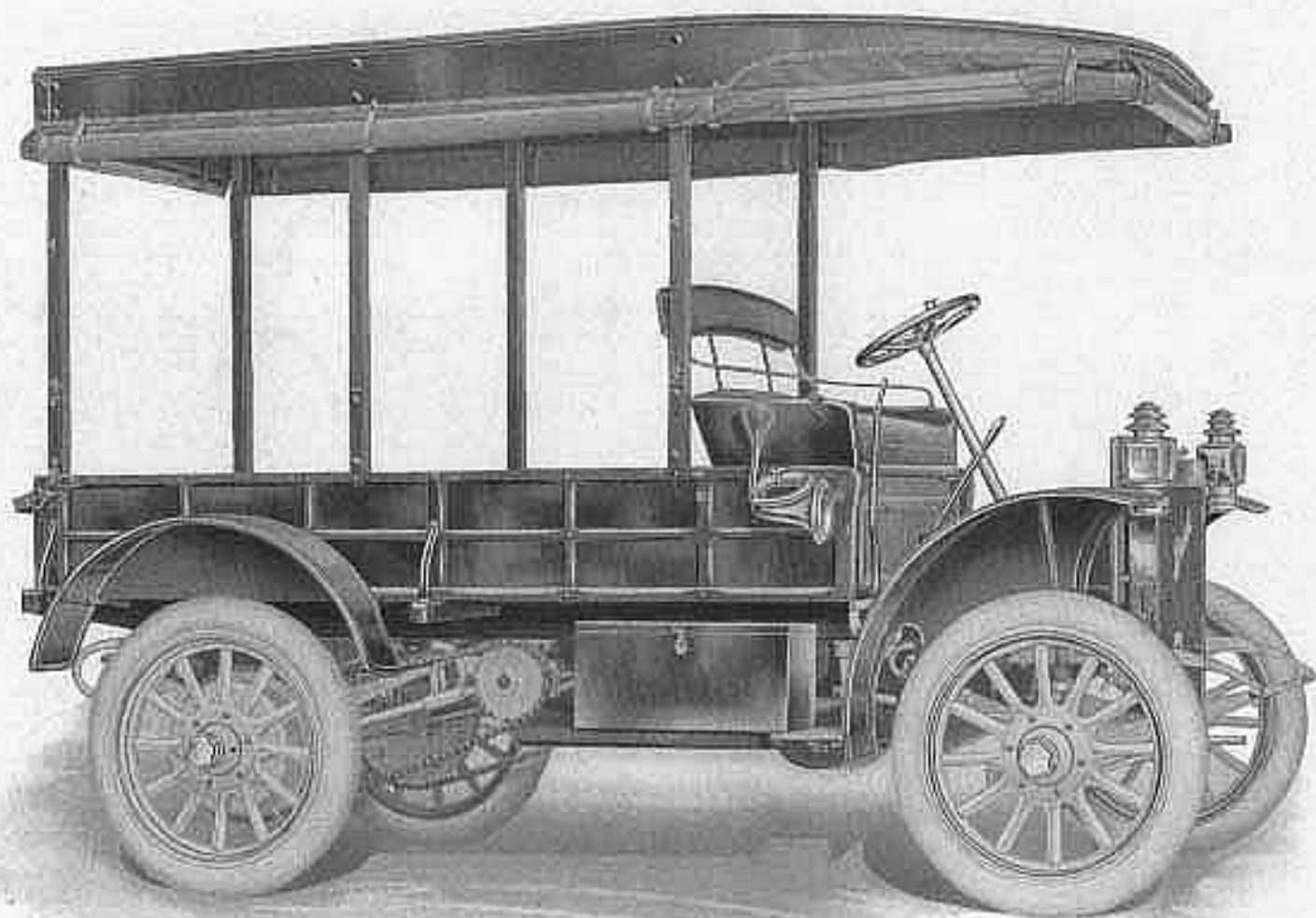
The Open Express Body is of the standard type, and made of the very best of lumber, thoroughly seasoned, and strongly braced with substantial iron brackets. Supplied with or without wing boards, tail gate held in position by chains of sufficient strength to enable use of this tail gate when open to assist in carrying extra long material. Standard color, dark green, or any color may be supplied on special order.

Load Capacity, Normal, 1,500 pounds Load Capacity, Maximum, 2,000 pounds
Price, \$1,000.00, f. o. b. factory

Buick

COMMERCIAL CARS

Buick



Standard Express, with Oiled Duce Canopy Top and Roll Curtains, No. A-20



Standard Express Canopy Top with Roll Curtains, No. A-20

Top and Curtains 12 ounce
Oiled Duck

This body is same style as A-2 with the addition of the roll curtain top. This may also be supplied with wing boards and in special colors when so ordered.

Height of top, 57 inches

Body Dimensions

Length over all	11 feet 6 inches
Length back of seat	76 inches
Width inside	43 inches
Height of sides	12 inches

Price \$1,075.00

f. o. b. factory



Buick

C O M M E R C I A L C A R S

Buick

Combination Wagonette and Express Body, No. A-22

This combination wagonette is especially well adapted to the requirements of hotels, golf clubs and other purposes where it is desirable to have a car for the transportation of passengers and then be able to utilize the same car for handling freight, trunks, etc. The seats may be removed or replaced in this truck in five minutes' time by taking out two bolts at the bottom of the seats at each end. Has a seating capacity of 12 passengers, including the driver.

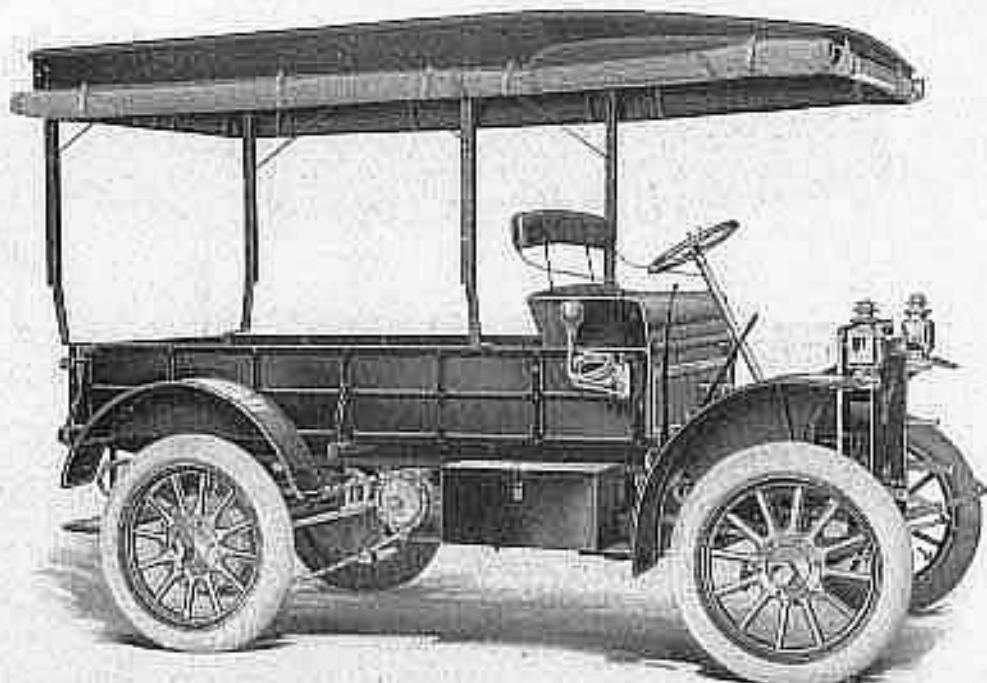
Width of aisles, 22 inches, which allows ample room and comfort with a full load.

Dimensions

Canopy top of 12 oz. oiled duck.
Length over all, 11 feet 6 inches.
Height of top, 57 inches.
Width of top, 59 inches.

Price \$1,135.00

f. o. b. factory.



Combination Express Body, Without Seats, No. A-21

This body is same style as A-20, with the exception that the top is extra wide for bulky merchandise which requires being enclosed under certain weather conditions. This model is also the same as A-22, with the exception of the side seats, which have been removed.

General Body Specifications.

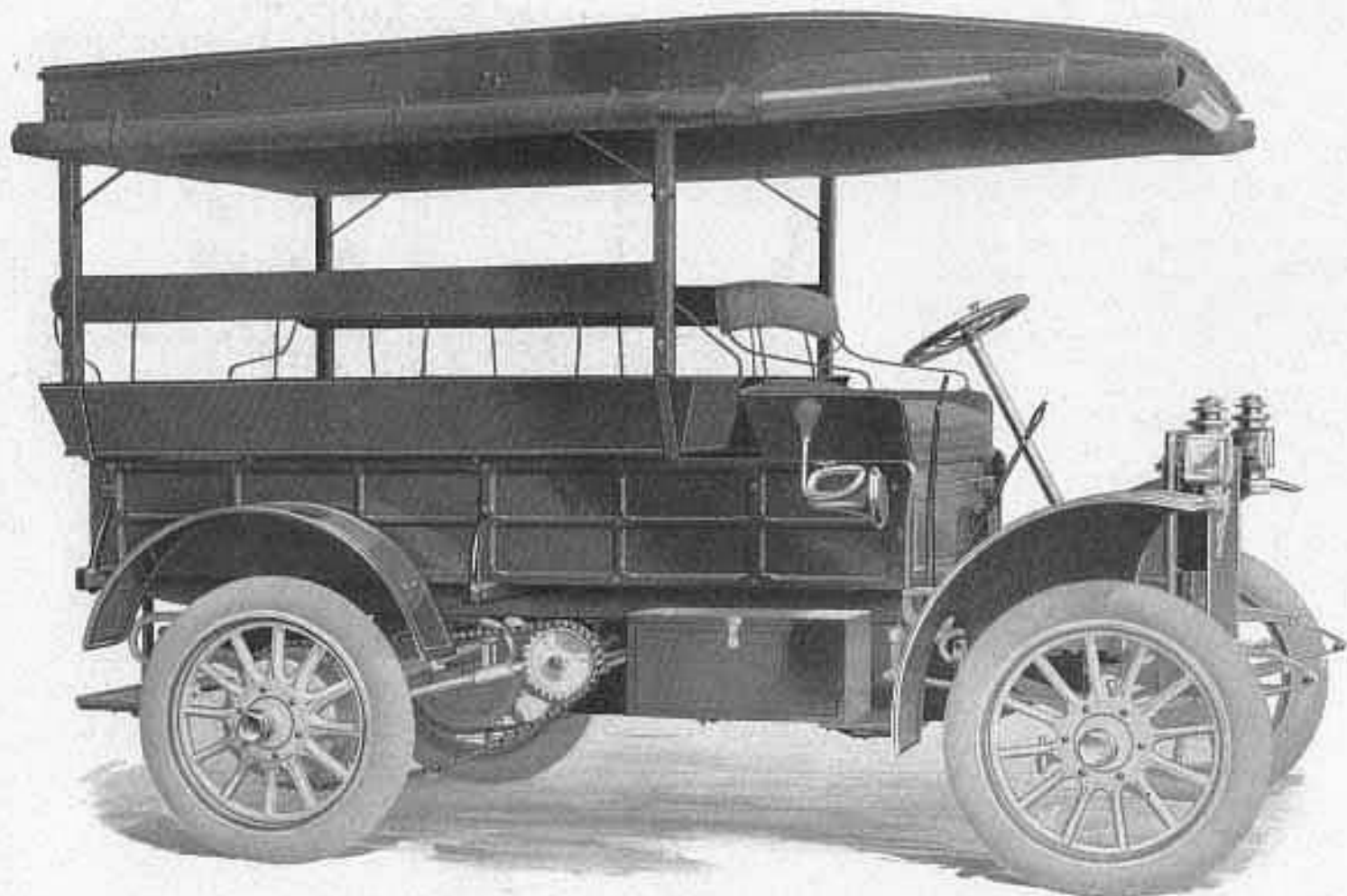
Canopy top of 12 oz. oiled duck.

Length over all, 11 feet 6 inches.	Length back of seat, 76 inches.
Height of top, 57 inches.	Width inside, 43 inches.
Width of top, 59 inches.	Height of sides, 12 inches.

Buick

COMMERCIAL CARS

Buick



Combination Wagonette and Express Body, No. A-22

Buick

C O M M E R C I A L C A R S

Buick

Standard Panel Top No. A-23

Any color on special order

Dimensions

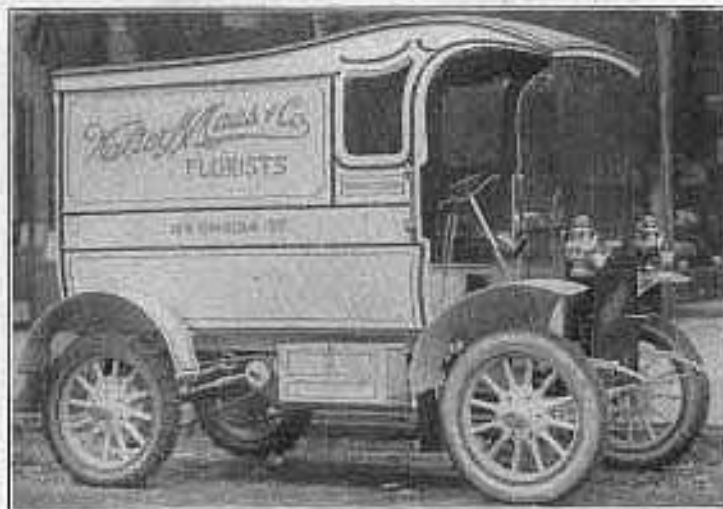
Wheel base	92 inches
Length over all	11 feet 6 inches
Length back of seat	74 inches
Width inside	41 inches
Height inside	56 inches
Height of doors	42 inches

Lazy backs divided and collapsible

Price \$1,200.00

f. o. b. factory

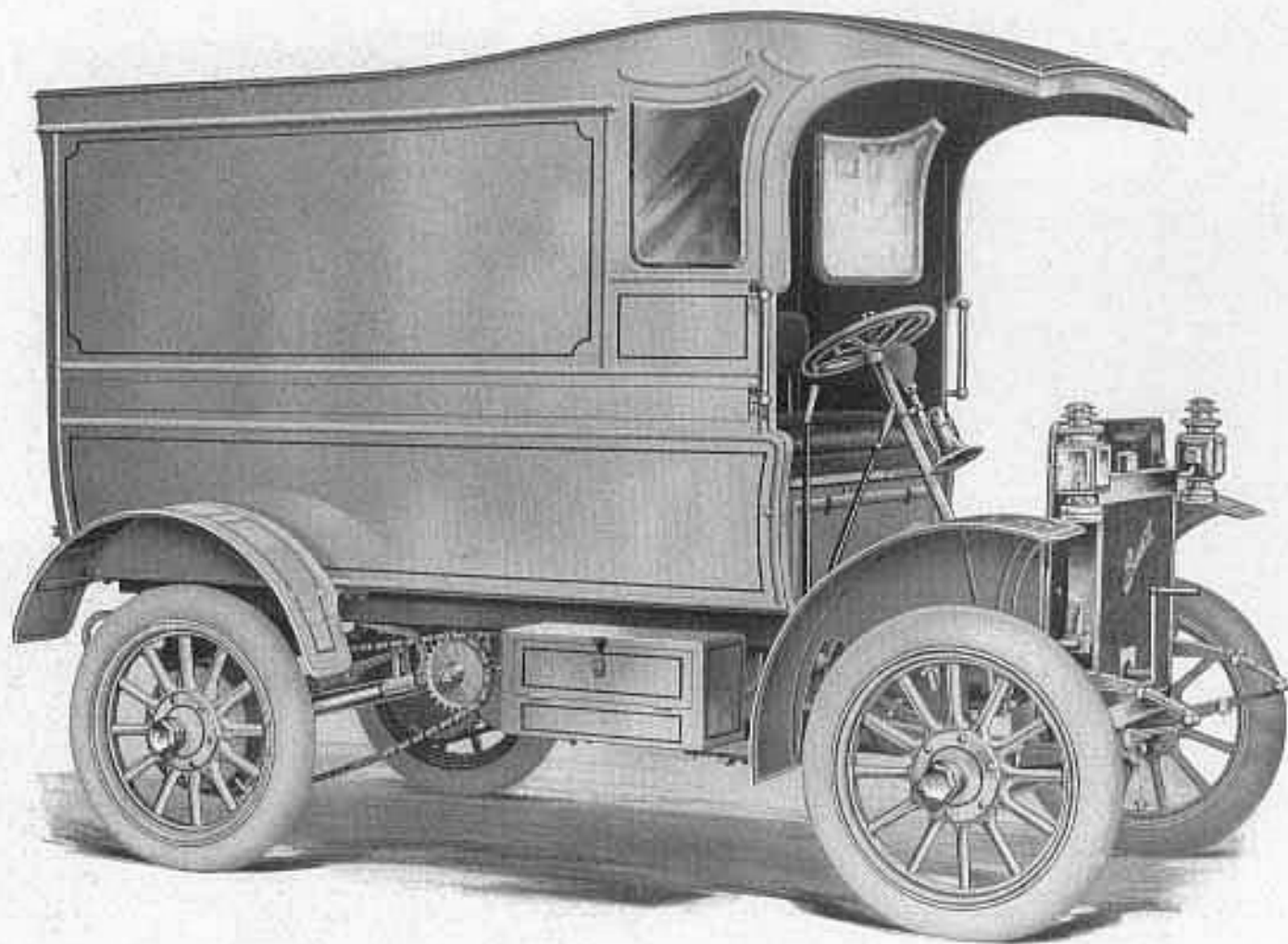
Extra equipment for this truck such as glass front, side curtains, shelves, lettering, etc., estimates furnished upon receipt of specifications.



Buick

COMMERCIAL CARS

Buick

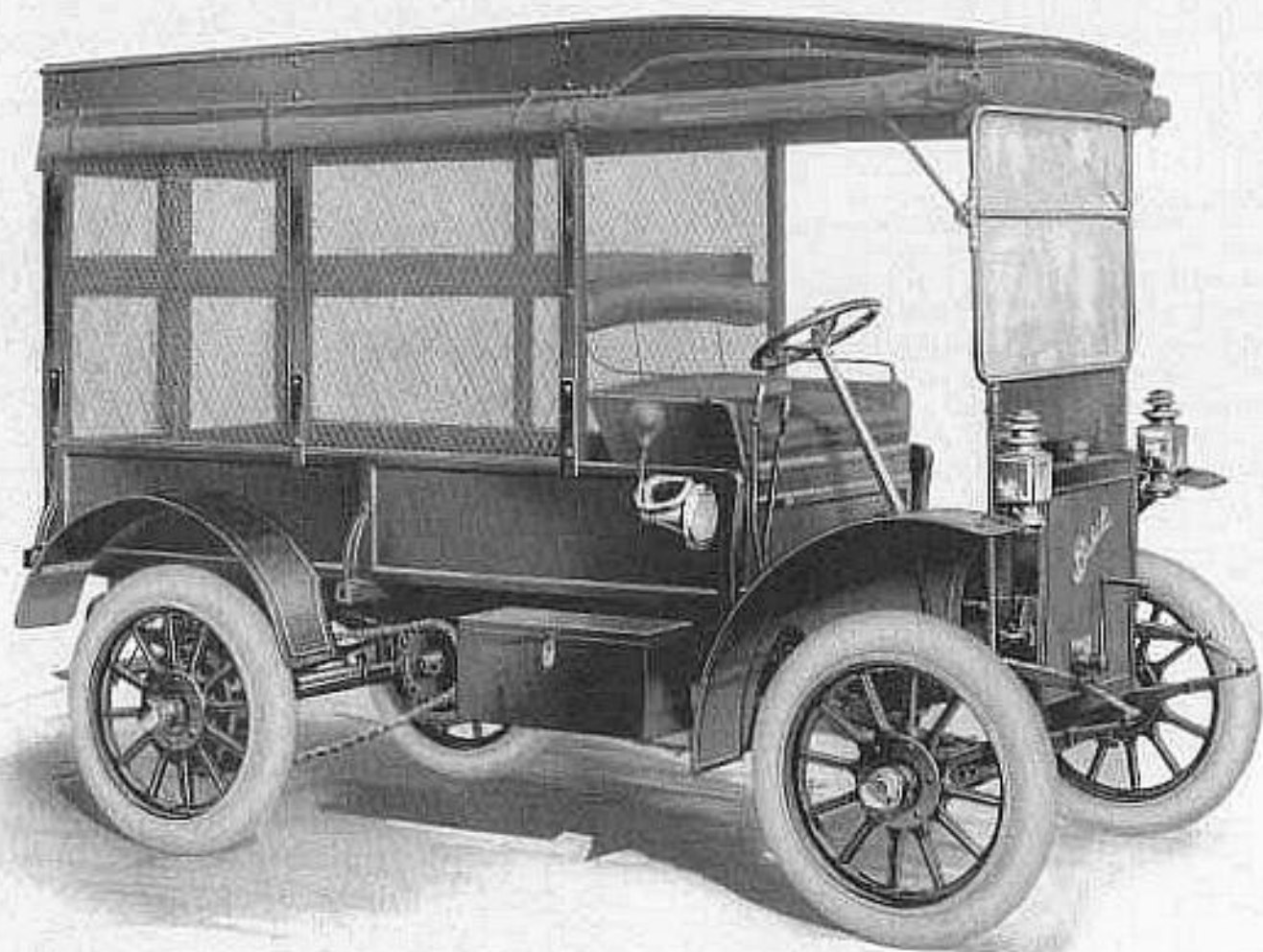


Standard Panel Top, No. A-23

Buick

COMMERCIAL CARS

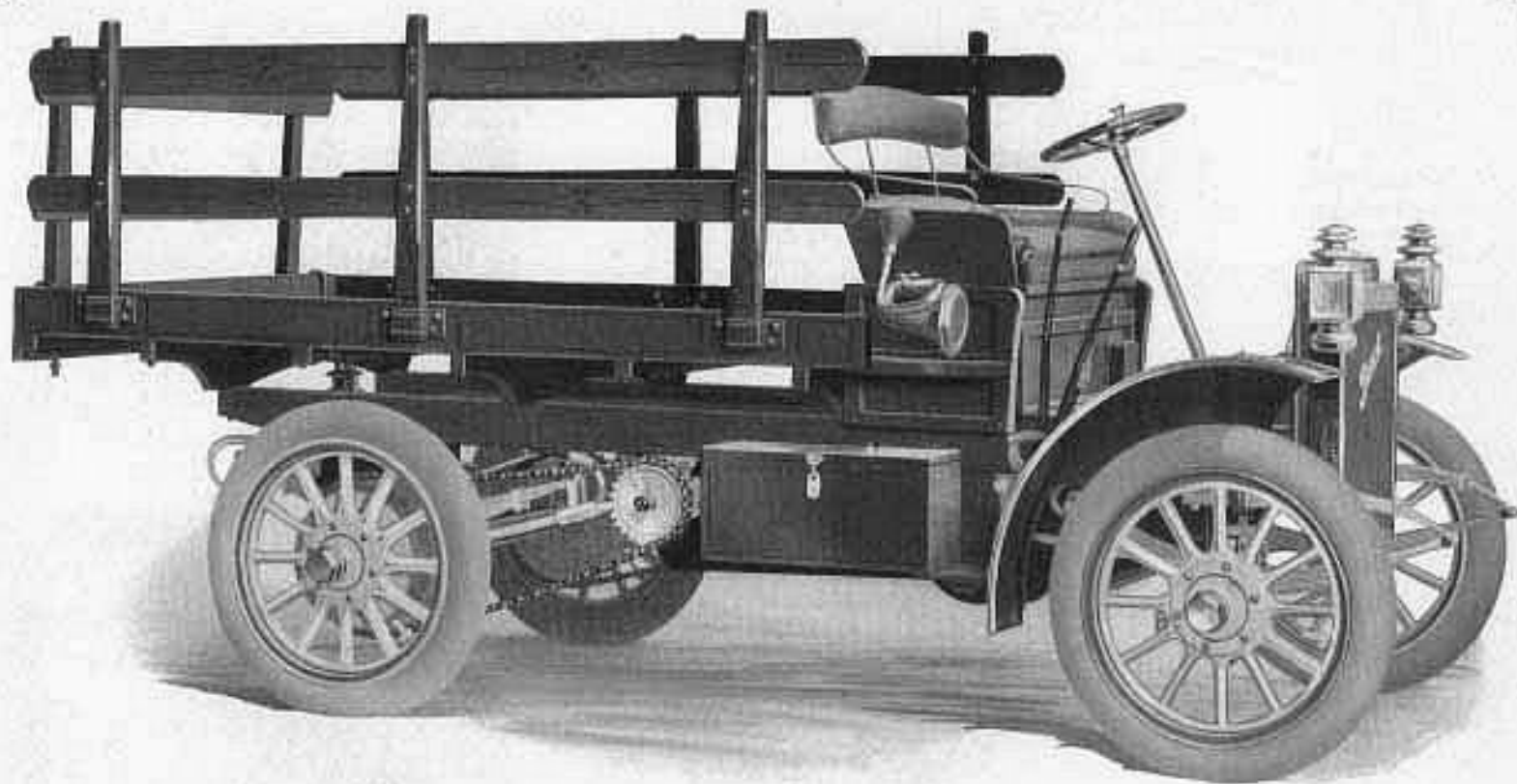
Buick



Standard Express, Screen Top with Roll Curtains, No. A-24

Buick

COMMERCIAL CARS

Buick

Standard Platform with Stakes, No. A-3

<i>Dimensions</i>	
Wheel base	92 inches
Length over all	12 feet 6 inches
Back of seat	88 inches
Width inside	62 inches
Height of rail	4 1-2 inches
Height of stakes	31 inches

Stakes outside and removable.
Height from ground to platform 40 inches.

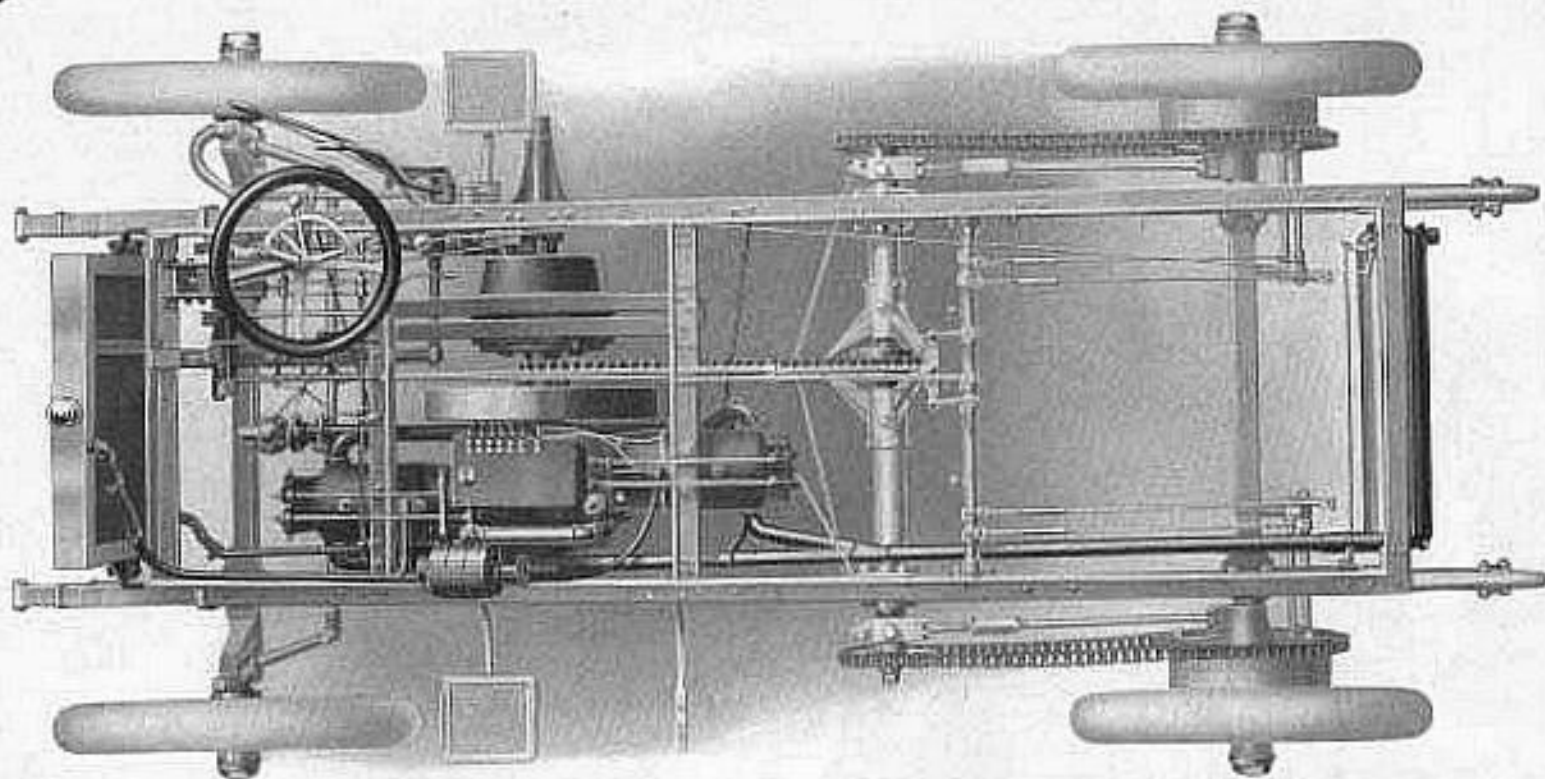
Price, with stakes \$1,035.00

Price, without stakes 1,026.00

f. o. b. factory

Buick

C O M M E R C I A L C A R S

Buick

The Buick Chassis

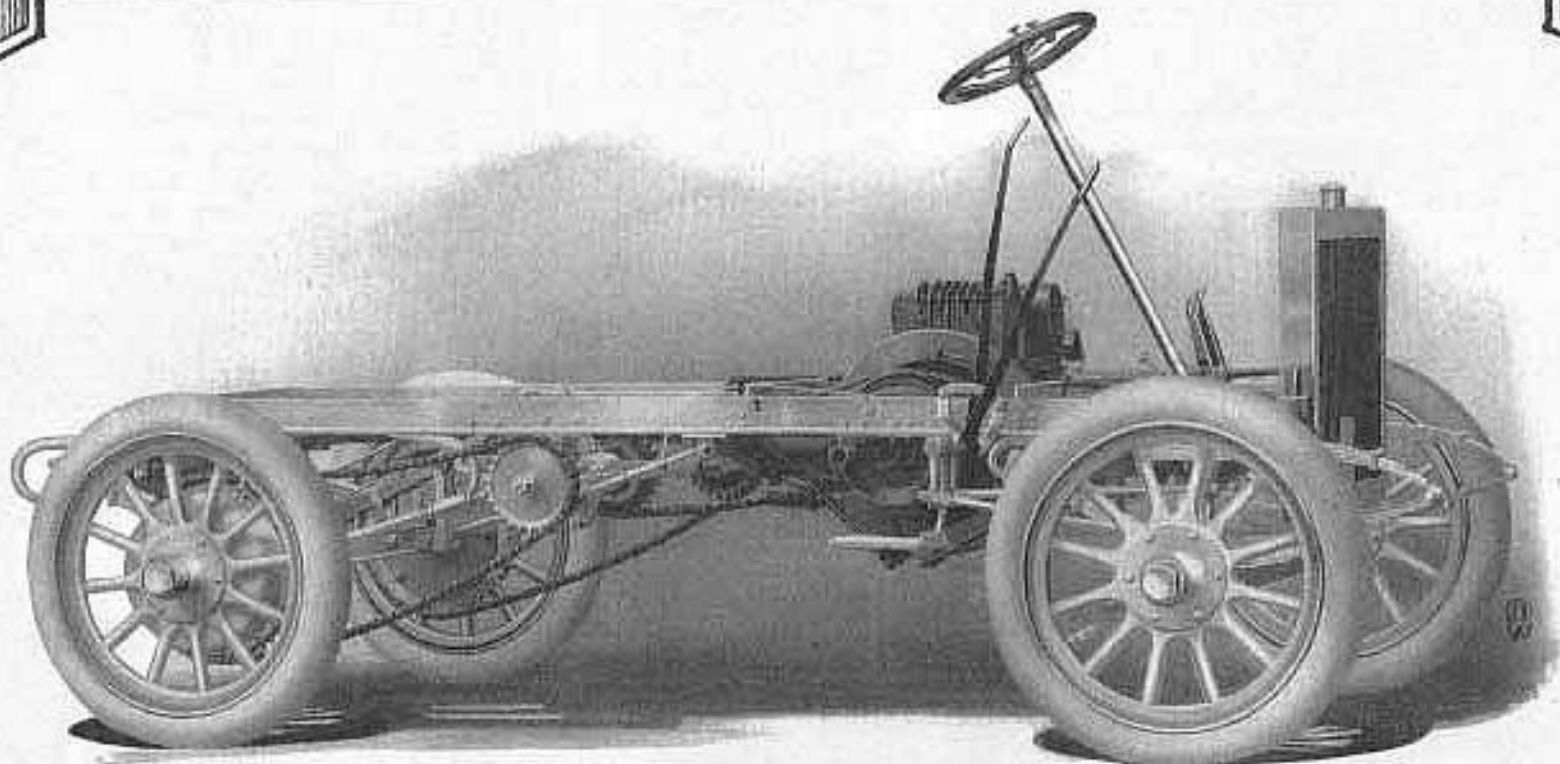
Our regular line of body designs is sufficiently varied to meet all ordinary requirements, but in case of special demands we will build bodies of special design at the lowest possible cost in proportion to style and quality, or will furnish the chassis with either 92-inch or 110-inch wheel base. Complete with dash, dash shield, pedal plate, fenders, dash and tail lamps, dash and tail lamp brackets, coil, wiring, gasoline tank and tools. Many carriage and wagon builders are engaging in the motor truck business, buying the chassis complete and building bodies to it. The prime requisite of success in such undertaking is a chassis of absolute dependability, as the carriage builder is seldom equipped for repairs on the mechanical portion of a motor car.

The Buick chassis not only fully meets this requirement, but the stability and reputation of the Buick factory is an assurance of satisfaction to the buyer.

PRICES: A-92, \$965.00 A-110, \$980.00 F. o. b. factory

Buick

COMMERCIAL CARS

Buick

Chassis Specifications

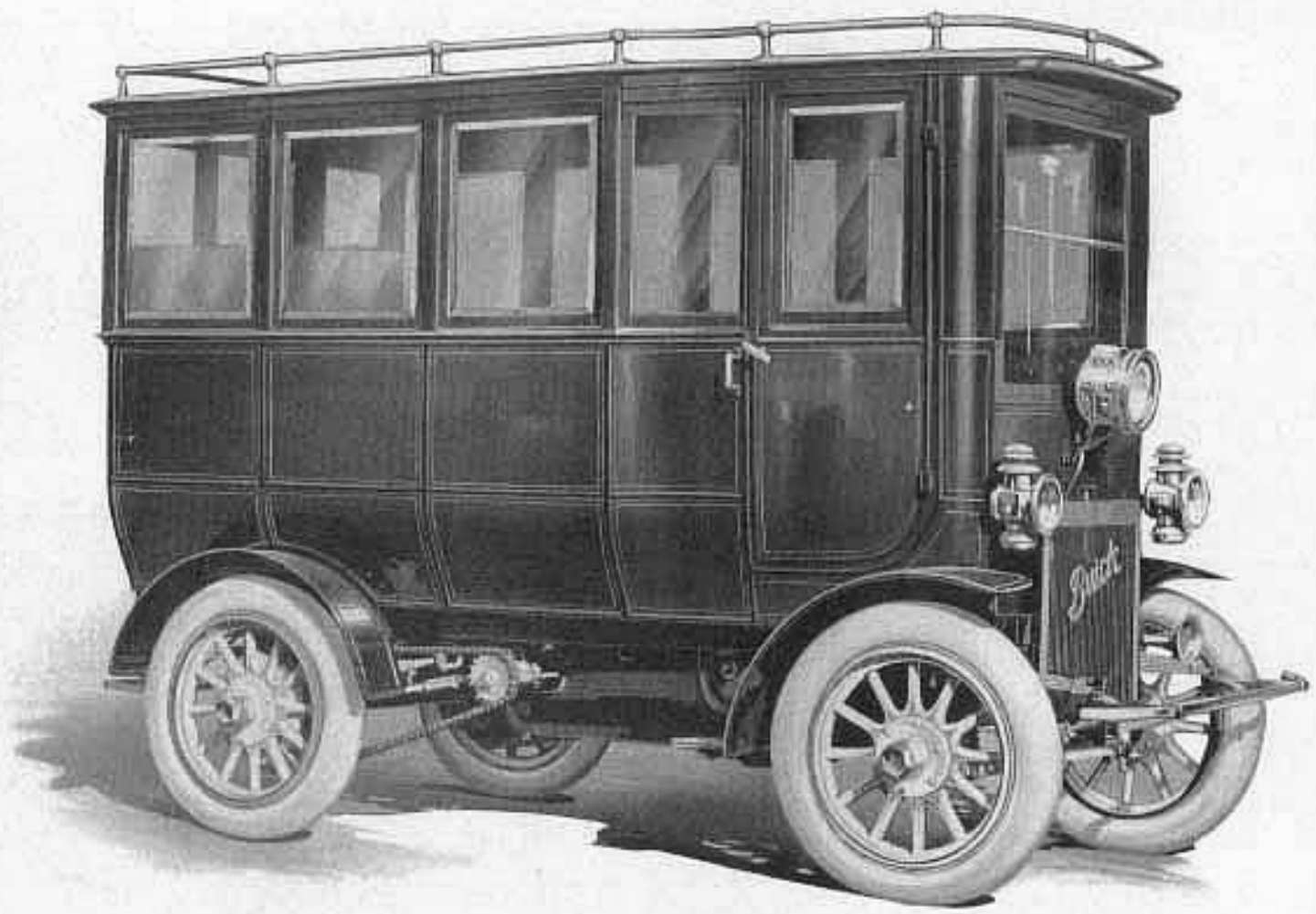
WHEEL BASE—Model A-92—92 in. Model A-110—110 in.
TREAD—56 inches. **ROAD CLEARANCE**—10 3/4 inches.
TIRES—32x4 inches, optional pneumatic or solid.
34x4 solid tires extra.
STEERING GEAR—Pinion and sector type.
BRAKES—Two internal expanding on hub, each 1 3/4 in. wide.
SPRINGS—3-4 elliptical in front, semi-elliptical in rear.
FRAME—Angle iron.
MOTOR—Two cylinder opposed. Horse Power 22 (brake test.)
BORE—4 1/2 inches. **STROKE**—5 inches.
VALVES—In head of cylinder, cage and valves removable.
RADIATOR—Vertical tube.
COOLING—Water circulated by pump.
TANK CAPACITY—Gasoline, 10 gal. Oil 1-2 gal.
IGNITION—Jump spark.
CURRENT SUPPLY—Remy magneto with reserve set of dry cells.
CARBURETOR—Schebler.

LUBRICATION—Mechanical force feed oiler, gear driven with breather attachment.
MOTOR CONTROL—Spark and throttle levers on top of wheel.
TRANSMISSION—Planetary, two speeds forward, one reverse.
CLUTCH—Cone, wide surface, positive action.
CONTROL—Pedals for low speed ahead, reverse and brake, side levers for engagement of clutch and emergency brake.
DRIVE—Single chain to jack shaft, double chain from jack shaft to rear wheels.
STARTING CRANK—Regularly placed on right side and removable. Front fixed crank optional on order.
AXLES—Steel I-Beam type—ball-bearing wheels.
WEIGHT—Chassis A-92, 2150 pounds. A-110, 2230 pounds.
CARRYING CAPACITY—Normal, 1500 lbs, maximum of 2000 lbs.
EQUIPMENT—Two-side oil lights, tail lights, horn, tools, pump, jack and tire repair kit.

Buick

COMMERCIAL CARS

Buick



Special Old English Motor Bus

