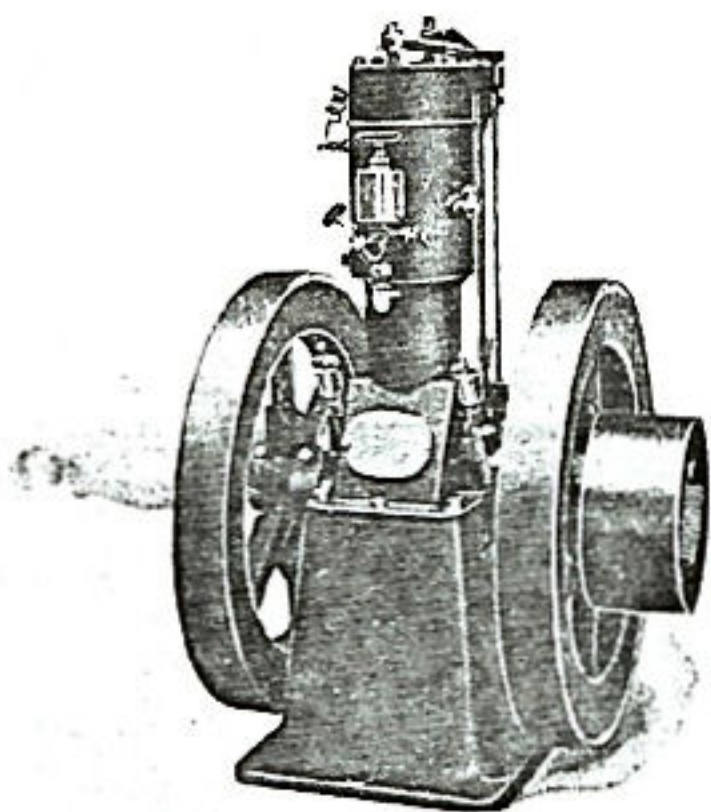


BUICK MOTOR CO.,

FLINT, MICH.



Stationary Gasoline Engines

P 9666

THE
BUICK
MODEL "B"

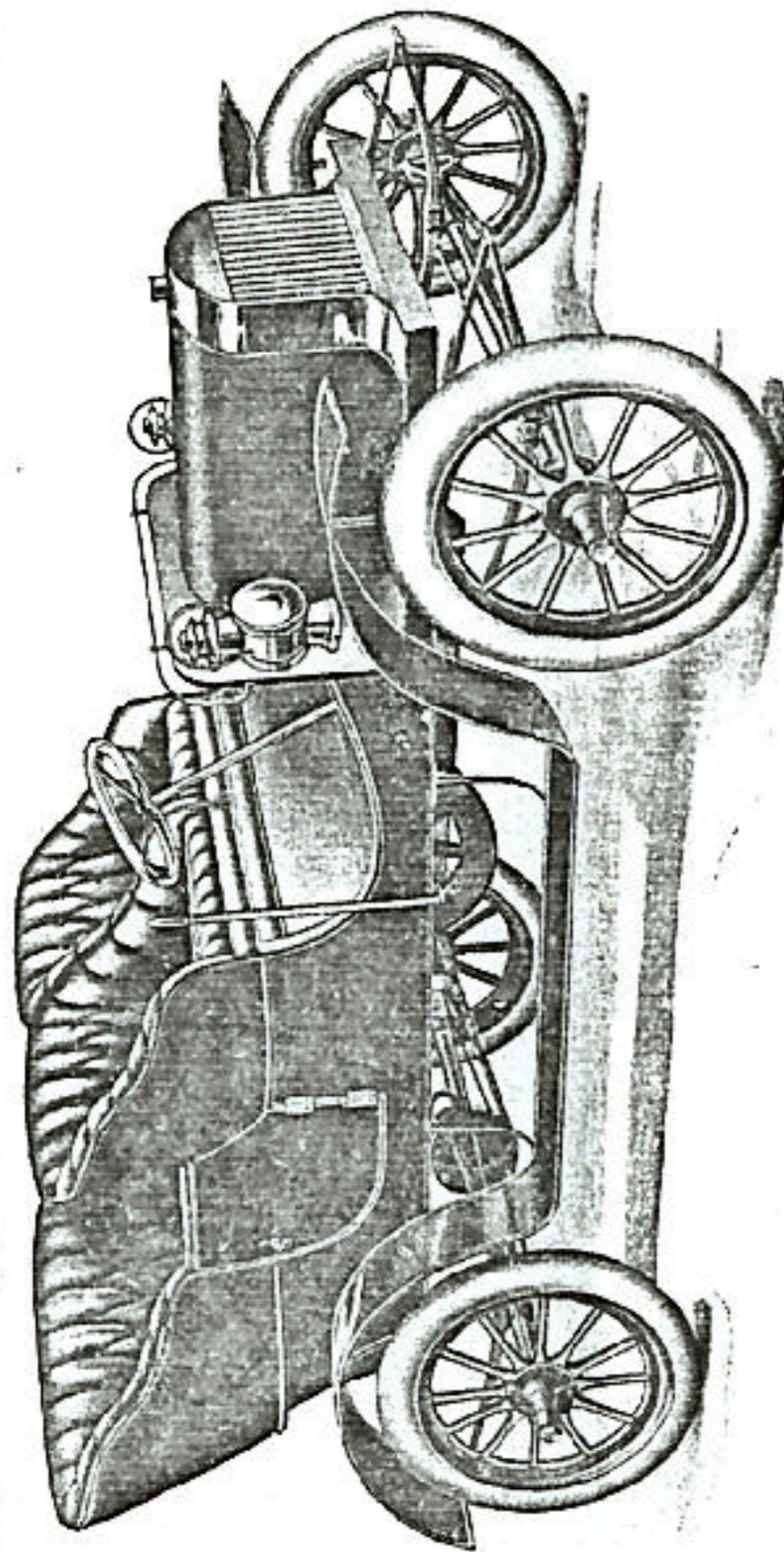
Manufactured by

BUICK MOTOR CO.,

FLINT, MICH.

For Sale by

"Simplicity"
is
Our Motte



Superior
to all others
in its class.

Buick Model "B"

The Car that Stands Out

- Wheels**—Artillery type, 28 inches in diameter.
Tires—3 inch Diamond Clincher, double tube.
Axles—Rear, 2 $\frac{1}{2}$ inch tubing, 1 $\frac{1}{2}$ inch shaft; front, 2 inch tubing. Hyatt roller bearing front and rear.
Springs—Has 4 $\frac{1}{2}$ inch $\frac{1}{2}$ -elliptic rear springs, 6 leaves; 36 in. $\frac{3}{4}$ -elliptic front springs, 4 leaves.
Gear—Wheel base 83 inch, 56 inch tread. Combination sheet steel and angle iron frame 1 $\frac{1}{2}$ x3x $\frac{1}{4}$ inch.
Motor—Double cylinder opposed, 4 $\frac{1}{2}$ x5; 15 H. P. motor of 4-cycle type, valves mechanically operated and valves are 2 inches in diameter; seats for the valves are not in the cylinder proper but are in separate housings made tight by ground joints, and we use no packing whatever on our engine. Cylinder, water jacket and head are all cast in one piece; $\frac{3}{4}$ inch water space. Long bearings, the best of babbit in bronze sleeve which presses into place so if it becomes necessary to replace same it can be done without loosening the alignment of engine.
Pump—We use a gear pump which is positive in action and is driven by gears connected direct to the crank shaft in place of a chain as is generally used.
Water—Circulates through a square fin continuous coil radiator.
Muffler—No noise or no back pressure.
Brake—Double acting band brake on differential on rear axle, brakes on each ground wheel separately.
Drive—Chain drive direct from engine shaft to rear axle.
Steering—Steering is done with a wheel on tilting column. This column can be thrown up out of the way so one can enter the automobile from steering side as easily as from the other.
Oiling—Automatic sight-feed is placed on dash board and has 7 deliveries. Tank holds 3 quarts.
Spark Coil—Double type with safety plug. Placed on dash.
Tanks—Gasoline 16 gallons, water 5 gallons. Gasoline and water tanks in hood.
Transmission—Is planetary and has 6 gears and no internal gears, gear parts run in oil bath and enclosed in a dust proof case. Forward speed 5 to 35 miles per hour, reverse from 1 to 8 miles per hour.
Body—Body has a side entrance, large rear seat comfortably seating 3 persons. Rear seat is elevated above the front, giving the occupants in rear a clear view ahead. The front seats are of the individual type seats nicely upholstered in the best of leather.
Hood—Is of the French type, 33 inches long and brass trimmed.
Finished—In blue, striped with gold, and running gear in yellow. Brass trimmings on dash board and around seats.
Equipment—Brass rail on dash, two oil side lamps, French horn, mud fenders, tools and repair outfit complete.

Price \$950 F. O. B. Factory. Twenty-five per cent. with order, balance on delivery.