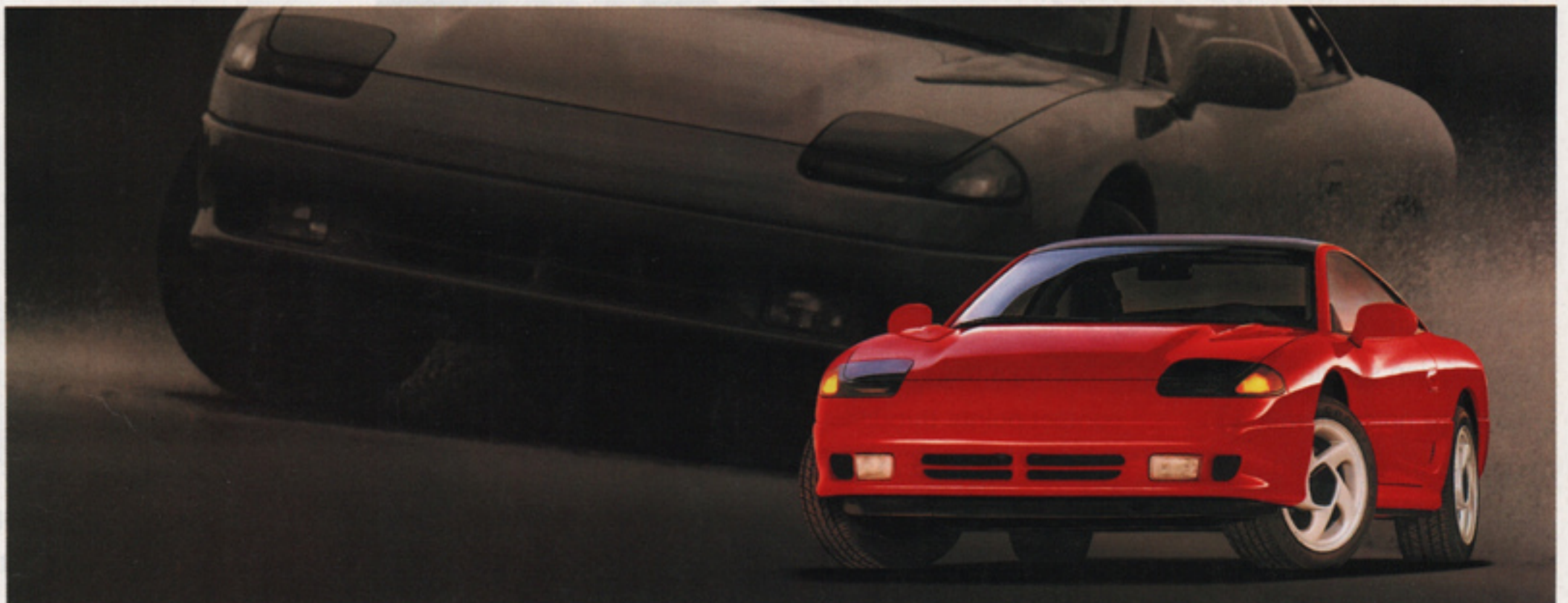


DODGE

CARS
TRUCKS



SAFETY MEASURES

When it comes to your safety and peace of mind, we do not compromise. We **do** test. And test. And test some more.

We test the circuitry of our vehicles to withstand three to four times normal operating voltage, protecting important microcircuits (such as the engine/vehicle controller) from unexpected power surges.

We test our power trains with 50,000-mile endurance runs on a test track... 24 hours a day, five to six days a week...to maximize efficient, reliable engine performance.

We test new suspension designs on a state-of-the-art computer-operated suspension simulator to minimize noise vibration over a variety of road surfaces.

And we test the crash-worthiness of our interior in an extensive range of impacts with a computerized "Finite Element Analysis" crash simulator, to attain optimum passenger safety. As you review the safety information here and throughout this catalog, you'll see that this "commitment to safety" is more than an advertising claim. It's our way of doing business.



A standard child protection lock on Caravan's sliding side door protects children from opening the door while the vehicle is moving. Simply flip the small lever on the latch and the door cannot be opened from the inside.

Air bags use gold contact points throughout the circuitry system for greater conductivity and reliability. Tests prove this system is highly effective in preventing serious injury



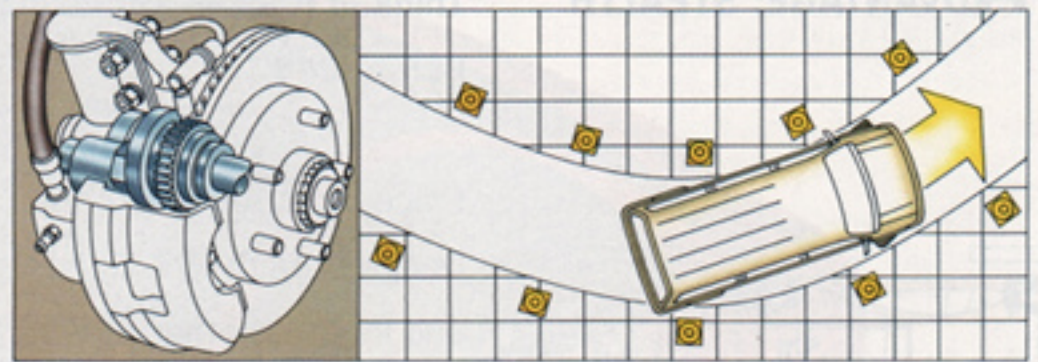
in front end motor vehicle accidents when used in conjunction with lap and shoulder restraints. So do the letters we receive from our owners.

New available dual Integrated Child Seats with five-point harnesses, designed specifically for Caravan using input from parents, are both safe and convenient. Caravan's new Integrated Child Seats fold down easily and eliminate problems that could result from incorrect installation of an add-on child seat.

It takes only seconds to buckle your child safely into an Integrated Child Seat, and one of the seats converts quickly to a booster seat for older children. The safety seats are for use by children who weigh between 20 and 40 pounds. Ask your salesperson for booster seat guidelines.

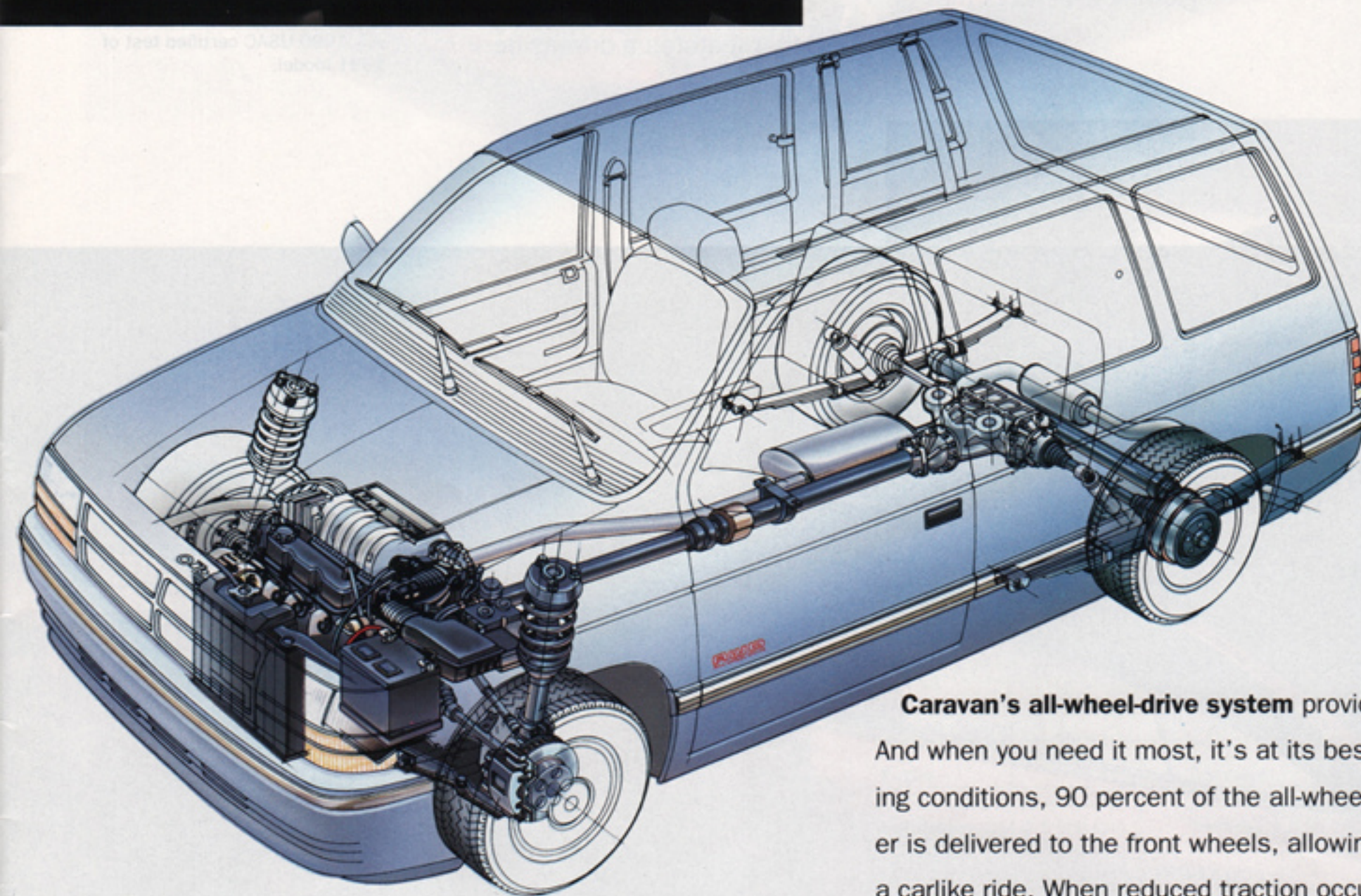
Pillar-mounted Unibelt three-point restraints lock up during severe deceleration of the vehicle or in a collision, providing outboard passengers with the enhanced safety benefit of a shoulder restraint.





Available four-wheel Antilock Brakes (ABS) provide extra safety and security by allowing the driver to stop in as short a distance as possible, while

still maintaining directional stability. Dodge's antilock braking system helps prevent wheel lockup and helps the driver control the vehicle during hard braking.



Caravan's all-wheel-drive system provides additional safety. And when you need it most, it's at its best. Under normal driving conditions, 90 percent of the all-wheel-drive model's power is delivered to the front wheels, allowing easy handling and a carlike ride. When reduced traction occurs, the all-wheel-

drive Caravan retains control through a viscous coupling that imperceptibly shifts torque to the rear wheels. The driver is not required to activate or engage the all-wheel-drive system in any way.

Some of the equipment shown or described throughout this catalog is available at extra cost.

Savings on option packages and no-charge air conditioning are based on cost of package items if purchased separately.

About this catalog. Since the time of printing, some of the information you'll find in this catalog may have been updated. Ask your dealer for details.



ADVANTAGE: STEALTH

"Think of it as an affordable Ferrari 348."

—Motor Trend

Since its introduction, the Dodge Stealth R/T Turbo and its three other Stealth stablemates — the Stealth R/T, Stealth ES and Stealth — have made quite an impression on the automotive journalists of America. A major factor in Stealth's glowing reviews is the

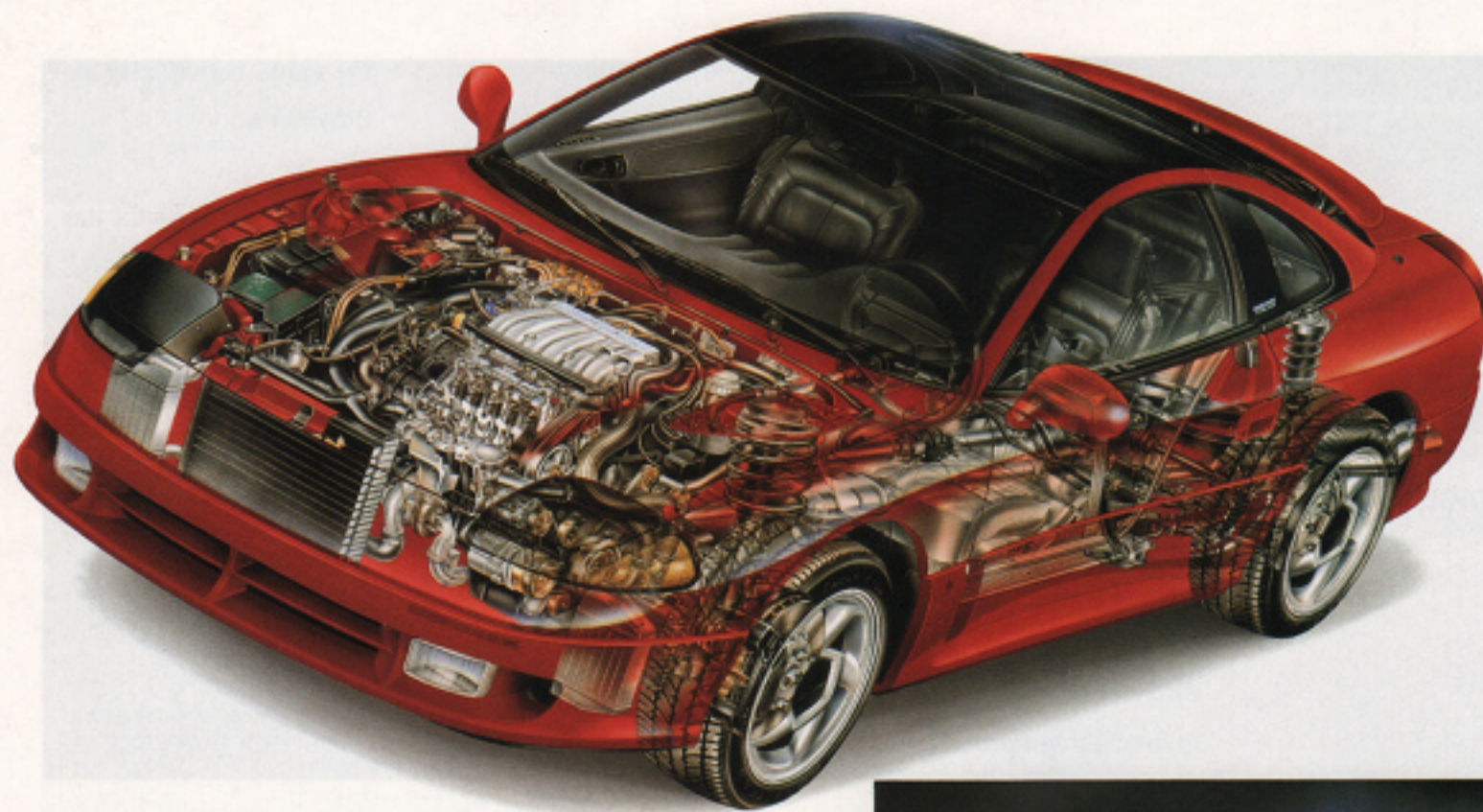
amount of high-performance hardware that's available on every model. The list includes a 3.0-liter V6 engine, power-assisted four-wheel vented disc brakes, power-assisted rack-and-pinion steering, a four-wheel independent suspension, front-wheel drive (all-wheel drive on the R/T Turbo) and an ergonomically exact interior that features a driver-side air bag.

"On the open road there are but a few automobiles that will run with it."

—Road & Track
Sports & GT Cars

Stealth R/T Turbo's 3.0-liter V6 produces a generous 300 horsepower and 307 pound-feet of torque. When that considerable horsepower is directed to all four wheels, 60 miles per hour is reached in just under five seconds.*

* July 1990 USAC certified test of 1991 model.



Stealth R/T Turbo shown in Firestorm Red.



Dodge Stealth ES shown in Mystic Blue.



Dodge Stealth R/T Turbo shown in Firestorm Red.

Power Trains¹

Engine	Transaxle	Stealth	Stealth ES	Stealth R/T	Stealth R/T Turbo
3.0-liter SOHC 12-Valve V6 MPI Horsepower: 164 @ 5,500 rpm Torque (lb-ft): 185 @ 4,000 rpm Bore and Stroke: 3.59" x 2.99" Compression Ratio: 8.9:1	5-speed manual overdrive	S			
	4-speed automatic overdrive	O			
3.0-liter DOHC 24-valve V6 MPI ² Horsepower: 222 @ 6,000 rpm Torque (lb-ft): 201 @ 4,500 rpm Bore and Stroke: 3.59" x 2.99" Compression Ratio: 10.0:1	5-speed manual overdrive		S	S	
	4-speed automatic overdrive		O	O	
3.0-liter DOHC 24-valve V6 MPI ^{2,3} Horsepower: 300 @ 6,000 rpm Torque (lb-ft): 307 @ 2,500 rpm Bore and Stroke: 3.59" x 2.99" Compression Ratio: 8.0:1	High-capacity 5-speed manual overdrive				S

S = Standard, O = Optional.

¹ Emissions controls and testing required at extra cost on all vehicles registered in California. Not available otherwise.

² Premium unleaded fuel is recommended.

³ Turbo engine not recommended for trailer towing and such use may damage engine and invalidate limited warranty. See your dealer for details.



ADVANTAGE: CARAVAN

"...with the abundant improvements in power, handling, ride aerodynamics and ergonomics, Chrysler shows no signs of relinquishing its dominance on the minivan segment it created."

—Motor Trend

The new second generation Caravan offers the safety of a standard driver-side minivan air bag,* available antilock brakes, all-wheel-drive models, and new optional dual Integrated Child Seats. Caravan also features Customer-Preferred™ Option Packages like the Family Value Package which offers air conditioning at no charge. "Not a single competitive vehicle can handle the wide variety of tasks required of a minivan with

the same equanimity as Chrysler's."

—Automobile Magazine

On all models except the Base, Caravan offers standard seating for seven people. With both rear and middle seats removed, you'll find up to 115.9 cubic feet of space on Caravan and up to 139.4 cubic feet of space on Grand Caravan.

* Minivan air bag provides added safety only when seat belts are worn.



Caravan LE interior shown in Medium Quartz.



Caravan ES shown in monochromatic Bright White Clear Coat.



Grand Caravan LE shown in Diamond Blue Metallic Clear Coat.

Power Trains ¹	Transaxle	Caravan				Grand Caravan			
		Base	SE	LE	AWD SE/LE	Base	SE	LE	AWD SE/LE
2.5-liter EFI 4-cylinder Horsepower: 100 @ 4,400 rpm Torque (lb-ft): 135 @ 2,800 rpm Bore and Stroke: 3.44" x 4.09" Compression Ratio: 8.9:1	5-speed manual	S							
	3-speed automatic	O	S						
3.0-liter SMPI V6 ² Horsepower: 142 @ 5,000 rpm Torque (lb-ft): 167 @ 3,600 rpm Bore and Stroke: 3.59" x 2.99" Compression Ratio: 8.9:1	3-speed automatic	O	O	S		S			
	4-speed automatic	O	O						
3.3-liter SMPI V6 Horsepower: 150 @ 4,800 rpm Torque (lb-ft): 185 @ 3,600 rpm Bore and Stroke: 3.66" x 3.19" Compression Ratio: 8.9:1	4-speed automatic	O	O	S		S	S	S	

S = Standard, O = Optional.
¹ Emissions controls and testing required at extra cost on all vehicles registered in California. Not available otherwise.
² Built by Mitsubishi Motors Corporation.

ADVANTAGE: DAYTONA

"Daytona keeps getting better and better."

—Road & Track Buyer's Guide

Daytona brings a fresh new high-performance look to the American road. And backs it with advanced engine technology, available antilock brakes and a modern four-passenger interior that features a standard

driver-side air bag.

Daytona IROC R/T* features a turbocharged, intercooled, 16-valve, dual overhead cam engine. The Daytona ES offers an optional 3.0-liter V6, full ground effects and 15-inch cast aluminum road wheels. And the affordable Daytona

features a 2.5-liter overhead cam engine, five-speed manual overdrive transaxle and sport suspension.

* Late availability.

Daytona IROC R/T shown in Indy Red Clear Coat.



Daytona IROC's optional leather interior shown in Medium Light Quartz.



Daytona ES shown in Electric Blue Metallic Clear Coat.



Power Trains¹

Engine	Transaxle	Daytona	Daytona ES	Daytona IROC	Daytona IROC R/T
2.5-liter SOHC EFI 4-cylinder Horsepower: 100 @ 4,400 rpm Torque (lb-ft): 135 @ 2,800 rpm Bore and Stroke: 3.44" x 4.09" Compression Ratio: 8.9:1	5-speed manual overdrive	S	S		
	3-speed automatic	O	O		
3.0-liter SOHC SMPI V6 ² Horsepower: 141 @ 5,000 rpm Torque (lb-ft): 167 @ 3,600 rpm Bore and Stroke: 3.59" x 2.99" Compression Ratio: 8.9:1	5-speed manual overdrive	O	O	S	
	Electronic 4-speed automatic	O	O	O	
2.5-liter SOHC SMPI 4-cyl. Turbo ³ Horsepower: 152 @ 4,800 rpm Torque (lb-ft): 211 @ 2,800 rpm Bore and Stroke: 3.44" x 4.09" Compression Ratio: 7.8:1	5-speed manual overdrive			O	
	3-speed automatic			O	
2.2-liter DOHC SMPI 4-cylinder Intercooled Turbo IIP ³ Horsepower: 224 @ 6,000 rpm Torque (lb-ft): 217 @ 2,800 rpm Bore and Stroke: 3.44" x 3.62" Compression Ratio: 7.8:1	High-capacity 5-speed manual overdrive				S

S = Standard. O = Optional.

¹ Emissions controls and testing required at extra cost on all vehicles registered in California. Not available otherwise. Manual and automatic transaxles include a safety ignition interlock.

² Built by Mitsubishi Motors Corporation.

³ Premium unleaded fuel is recommended. Turbocharged engine not recommended for trailer towing and such use may damage engine and invalidate limited warranty. See your dealer for details.

ADVANTAGE: SPIRIT

Dodge Spirit is one of the lowest priced six-passenger cars in America.

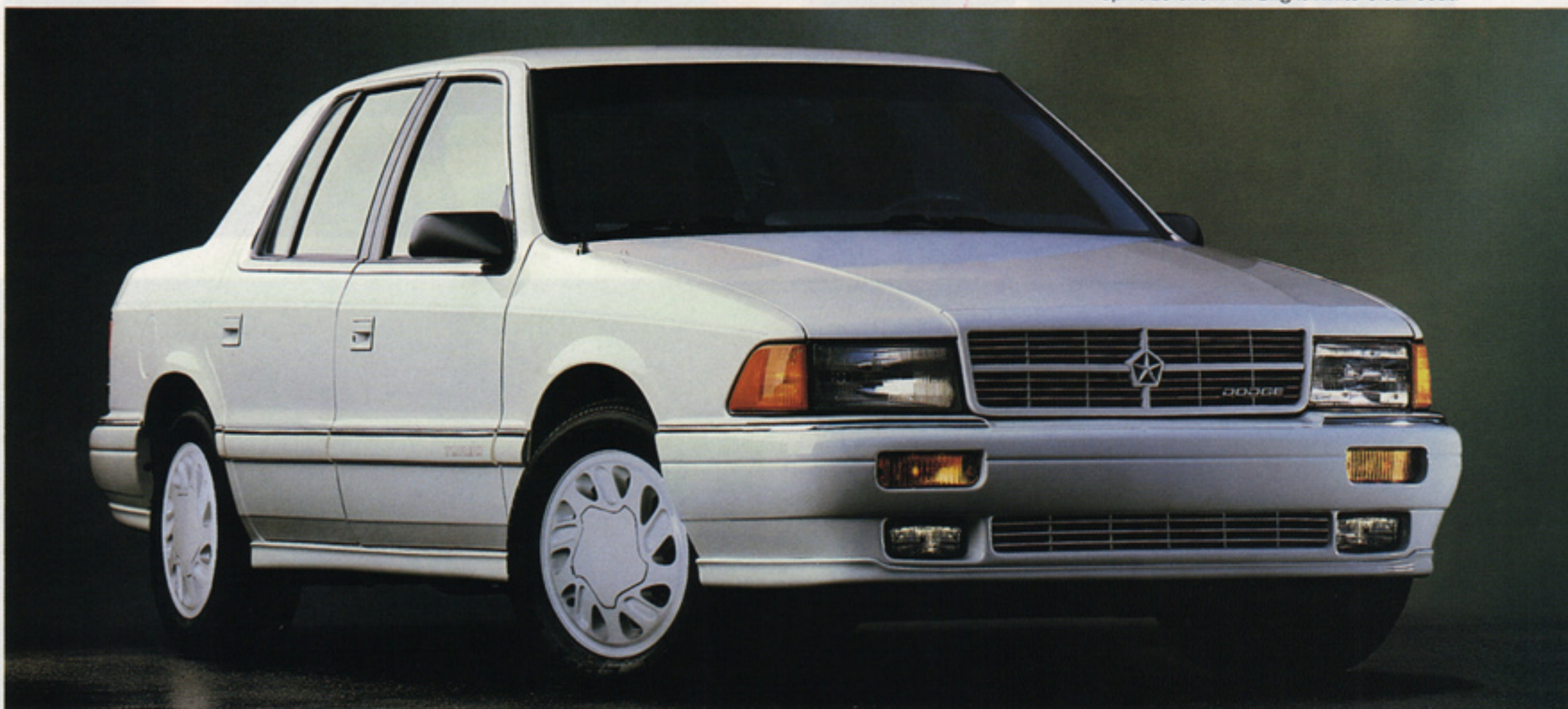
Available in Spirit, Spirit LE, Spirit ES and a high-performance Spirit R/T model, this sedan also offers the highest mileage and more safety features for the money (including a standard driver-side air bag) than any

six-passenger car. Add to that your choice of low-cost Customer-PreferredSM Option Packages (some with **no-charge air conditioning**) and you have a serious driver's car that rivals Japan's best in terms of value, comfort, reliability and engineering.



Optional 3.0-liter OHC sequential multipoint fuel-injected V6 engine

Spirit ES shown in Bright White Clear Coat.



Spirit LE interior shown in Slate Blue.



Spirit R/T shown in Indy Red Clear Coat.



Power Trains¹

Engine	Transaxle	Spirit	Spirit LE	Spirit ES	Spirit R/T
2.5-liter SOHC EFI 4-cylinder Horsepower: 100 @ 4,400 rpm Torque (lb-ft): 135 @ 2,800 rpm Bore and Stroke: 3.44" x 4.09" Compression Ratio: 8.9:1	5-speed manual overdrive	S			
	3-speed automatic	O	S		
2.5-liter SOHC SMPI 4-cylinder Turbo ² Horsepower: Man.-148 @ 4,400 rpm Auto.-152 @ 4,800 rpm Torque (lb-ft): Man.-185 @ 3,600 rpm Auto.-211 @ 2,800 rpm Bore and Stroke: 3.44" x 4.09" Compression Ratio: 7.8:1	5-speed manual overdrive			S	
	3-speed automatic		O	O	
3.0-liter SOHC SMPI V6 ³ Horsepower: 141 @ 5,000 rpm Torque (lb-ft): 167 @ 3,600 rpm Bore and Stroke: 3.59" x 2.99" Compression Ratio: 7.8:1	3-speed automatic	O	O		
	Electronic 4-speed automatic	O	O	O	
2.2-liter DOHC SMPI Intercooled Turbo III ³ Horsepower: 224 @ 6,000 rpm Torque (lb-ft): 217 @ 2,800 rpm Bore and Stroke: 3.44" x 3.62" Compression Ratio: 7.8:1	High-capacity 5-speed manual overdrive				S

S = Standard. O = Optional.

¹ Emissions controls and testing required at extra cost on all vehicles registered in California. Not available otherwise. Manual and automatic transaxles include a safety ignition interlock.

² Premium unleaded fuel is recommended. Turbocharged engine is not recommended for trailer towing and such use may damage engine and invalidate limited warranty. See your dealer for details.

³ Built by Mitsubishi Motors Corporation.

ADVANTAGE: SHADOW

Dodge Shadow and Shadow America offer more car for the money than you'd think possible.



If you want a car with the style and versatility of a smooth, aerodynamic lift-back profile, you'll like the

Shadow. If you need a car with the safety and security of a driver-side air bag, power-assisted brakes and front-wheel drive, you'll love the Shadow. And if you're looking for a car with the value of over 40 standard features and your choice of low-cost, Customer-Preferred™ Option Packages (some offering **air conditioning at no charge**), you'll buy a Shadow.

Available in both two- and four-door liftback and two-door convertible models,

Shadow leads with quality, reliability and price advantages. Fact is, Dodge Shadow is the lowest-priced American car, with or without a top.

For sports enthusiasts, the beefed-up Shadow ES scores big with the aggressive look of a rear spoiler (not available on the convertible), accent-color front air dam and lower bodyside appliques.



Shadow America shown in Electric Blue Metallic Clear Coat.



Shadow interior shown in Crimson Red.



Shadow ES Convertible shown in Bright White Clear Coat.

Power Trains¹

Engine	Transaxle	Shadow America	Shadow	Shadow Convertible Shadow ES Shadow ES Convertible
2.2-liter EFI 4-cylinder Horsepower: 93 @ 4,800 rpm Torque (lb-ft): 122 @ 3,200 rpm Bore and Stroke: 3.44" x 3.62" Compression Ratio: 9.5:1	5-speed manual	S	S	
	3-speed manual	0	0	
2.5-liter EFI 4-cylinder Horsepower: 100 @ 4,400 rpm Torque (lb-ft): 135 @ 2,800 rpm Bore and Stroke: 3.44" x 4.09" Compression Ratio: 8.9:1	5-speed manual		0	S
	3-speed automatic		0	0
2.5-liter SOHC EFI 4-cylinder Turbo ² Horsepower: Man.-148 @ 4,400 rpm Auto.-152 @ 4,800 rpm Torque (lb-ft): Man.-185 @ 3,600 rpm Auto.-211 @ 2,800 rpm Bore and Stroke: 3.44" x 4.09" Compression Ratio: 7.8:1	5-speed manual			0
	3-speed automatic			0

S = Standard. 0 = Optional.

¹ Emissions controls and testing required at extra cost on all vehicles registered in California. Not available otherwise.

² Available in Turbo Engine Customer-Preferred™ Package only. Premium unleaded fuel recommended. Turbo engine not recommended for trailer towing and such use may damage engine and invalidate limited warranty. See your dealer for details.

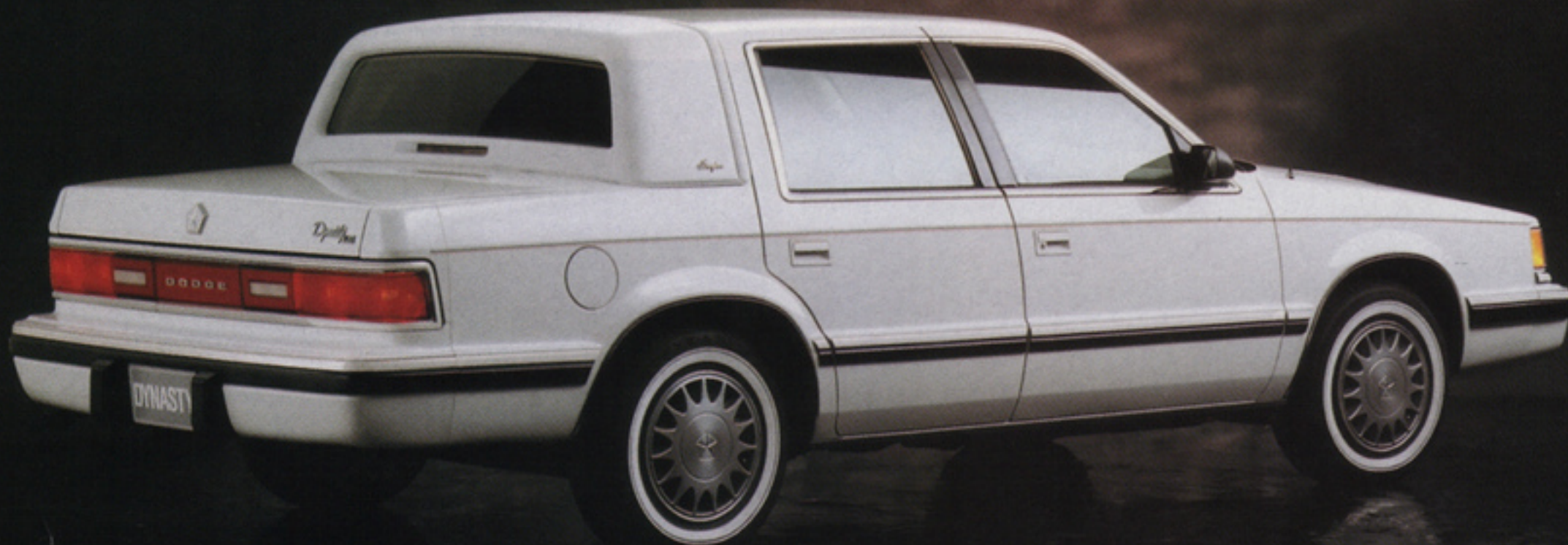
ADVANTAGE: DYNASTY

Our designers and engineers have created an environment that captures the style, substance and safety traditionally reserved for our pricey competition. From its standard driver-side air bag and choice of two available V6

engines to its optional antilock braking system and available automatic rear load-leveling suspension, the six-passenger Dodge Dynasty is traditional luxury at an affordable price. And now you can add a new level of luxury to your Dynasty with our special Brougham edition.

It's available when you select one of our low-cost Customer-PreferredSM Option Packages,* some of which also offer **air conditioning at no charge.**

*Available with select packages only.



Dynasty LE Brougham shown in Bright White Clear Coat.



Dynasty LE interior shown in Champagne.

Power Trains¹

Engine	Transaxle	Dynasty	Dynasty LE
2.5-liter EFI 4-cylinder ² Horsepower: 100 @ 4,400 rpm Torque (lb-ft): 135 @ 2,800 rpm Bore and Stroke: 3.44" x 4.09" Compression Ratio: 8.9:1	3-speed automatic	S	
3.0-liter SMPI V6 ³ Horsepower: 141 @ 5,000 rpm Torque (lb-ft): 167 @ 3,600 rpm Bore and Stroke: 3.59" x 2.99" Compression Ratio: 8.9:1	4-speed electronic automatic	O	S
3.3-liter SMPI V6 Horsepower: 147 @ 4,800 rpm Torque (lb-ft): 183 @ 3,600 rpm Bore and Stroke: 3.66" x 3.19" Compression Ratio: 8.9:1	4-speed electronic automatic	O	O

S = Standard. O = Optional.

¹ Emissions controls and testing required at extra cost on all vehicles registered in California. Not available otherwise.

² Not available in California.

³ Built by Mitsubishi Motors Corporation.

ADVANTAGE: MONACO

Monaco "is a well-proportioned, classy-looking sedan with the combined good qualities of Europe and America."

—Auto Magazine

With a drag coefficient of 0.31, Monaco is one of the

most aerodynamic cars in America. It features a well-appointed interior that seats up to five adults and it is the roomiest car in its class. Monaco also offers a long list of sophisticated standard engineering features, including a high-performance 3.0-liter multi-

port, fuel-injected V6 engine mated to a four-speed automatic transaxle, responsive power-assisted four-wheel disc brakes (standard on ES and available on LE), crisp four-wheel independent suspension, and front-wheel drive.



Monaco ES shown in Sabre Gray Metallic Clear Coat/Sterling Silver Metallic Clear Coat.

ADVANTAGE: COLT

"Colts are handsome little creations...with plenty of distinctive design elements, adding up to a whole that is better looking than many of their rivals."

—Road & Track Buyer's Guide

From its wide road-hugging stance and full 34.7 cubic feet of cargo capacity to its standard power-assisted brakes, rack-and-pinion steering and powerful 1.5-

liter 92 horsepower engine, the versatile Dodge Colt three-door hatchback is the very definition of practical transportation. Inside, there's enough room for up to five people plus their

gear. You'll also find split folding rear seats, motorized two-point passive restraint belts for front bucket seats, and a center storage console.

Colt GL shown in Light Spectrum Blue Metallic.



Power Trains¹

Engine	Transaxle	Colt	Colt GL
1.5-liter MPI 4-cylinder ² Horsepower: 92 @ 6,000 rpm Torque (lb-ft): 93 @ 3,000 rpm Bore and Stroke: 2.97" x 3.23" Compression Ratio: 9.2:1	4-speed manual	S	
	5-speed manual overdrive		S
	3-speed automatic	O	O

S = Standard. O = Optional.

¹ Emissions controls and testing required at extra cost on all vehicles registered in California. Not available otherwise.

² Built by Mitsubishi Motors Corporation.



Advantage

DODGE TRUCKS

A simple promise: overall, today's Dodge Trucks can deliver more payload, towing and horsepower than Ford, Chevy or any import. Period. In a world hungry for any small jump in horsepower, Dodge has made a quantum leap with its new MAGNUM Series engines.

The new MAGNUM SMPI 5.2-liter V8 has more horsepower* than Ford's 5.8-liter

V8 and Chevy's 5.7-liter V8: 230 hp at 4,800 rpm, with 280 pound-feet of torque at 3,200 rpm.

The new MAGNUM SMPI 3.9-liter V6 delivers more horsepower* than Ford's 4.9-liter I-6 and Chevy's 5.0-liter V8: 180 hp at 4,800 rpm, with 220 pound-feet of torque at 3,200 rpm. **SMPI precision, efficiency.** Sequential multipoint fuel injection helps deliver high

efficiency for quick starts, increased power and torque, plus good fuel economy.

Leaner, meaner, tighter, tougher.

In addition to sequential multipoint fuel injection, Dodge's new MAGNUM Series engines share major design and quality improvements in the cylinder head, engine block, pistons, intake and exhaust manifolds and oil pan. The result is a 29 percent reduction in engine componentry, less weight, tighter sealing, reduced

maintenance, and long life, bringing you increased power, economy and reliability.

More MAGNUM power with the 5.9-liter Cummins Intercooled Turbo Diesel. Power available exclusively in a Dodge Ram Pickup—the hardest-working pickup in America.

With 400 pound-feet of torque at 1,750 rpm, the 5.9-liter Cummins Intercooled Turbo Diesel delivers the highest torque of any diesel engine available in a pickup. Engineered specifically for

New oil pan gaskets using state-of-the-art silicone for a 60 percent quality improvement over conventional materials.

New combustion chambers and ports for more volumetric efficiency and increased horsepower.

New intake and exhaust valves and ports for better breathing, increased horsepower and higher RPM range.

New high-flow exhaust manifolds for improved breathing and more horsepower.

New sequential multipoint fuel injection system boosts horsepower and fuel economy.

New tuned intake manifold with unique one-piece design increases horsepower and is easy to service.

New pistons and new ring package for improved emissions control.

New water pump assembly cools with a higher flow rate.

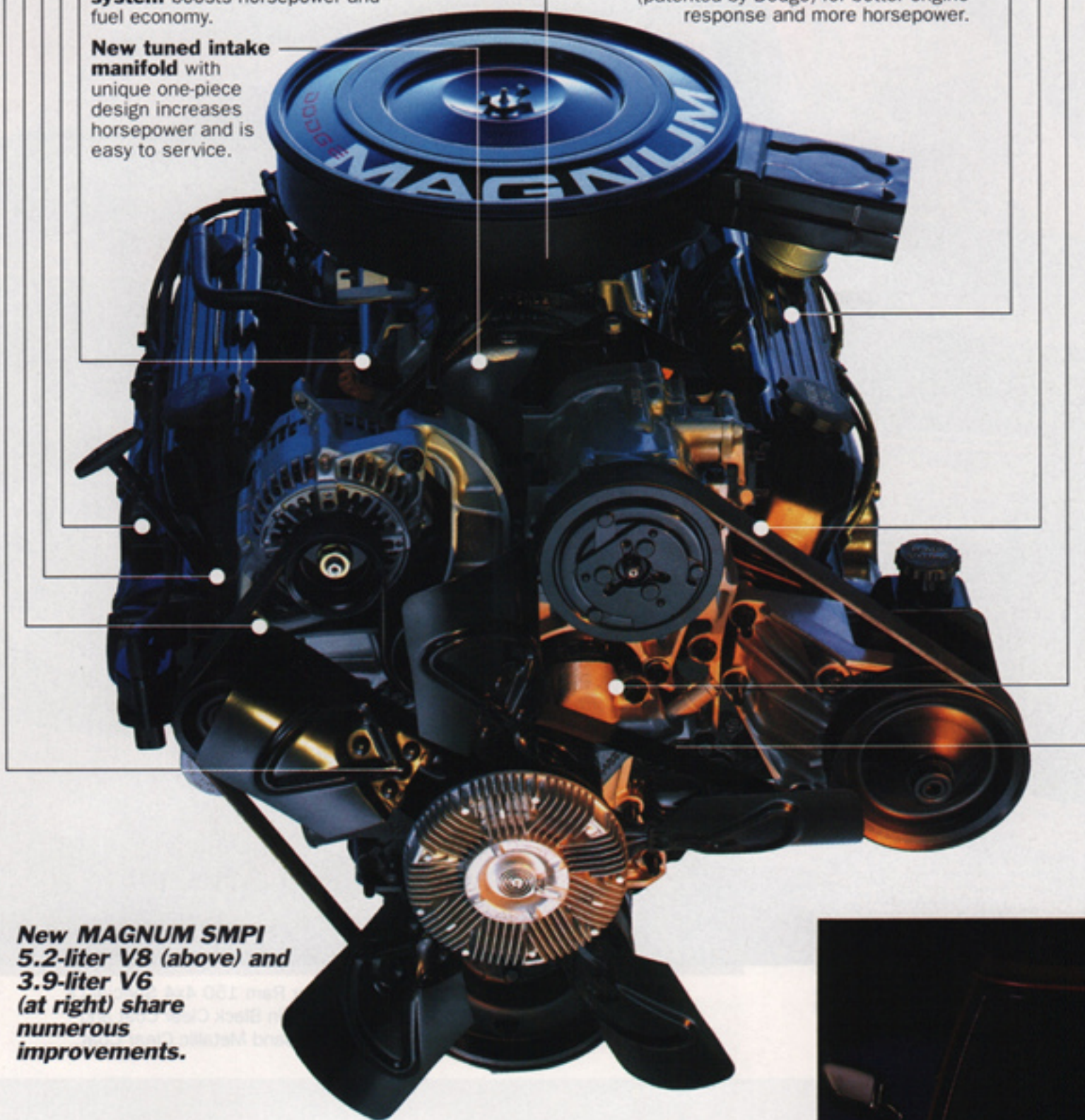
New serpentine belt accessory drive with automatic tensioner for less maintenance and reduced engine vibration.

New rocker arms and cover assemblies for long life and improved sealing.

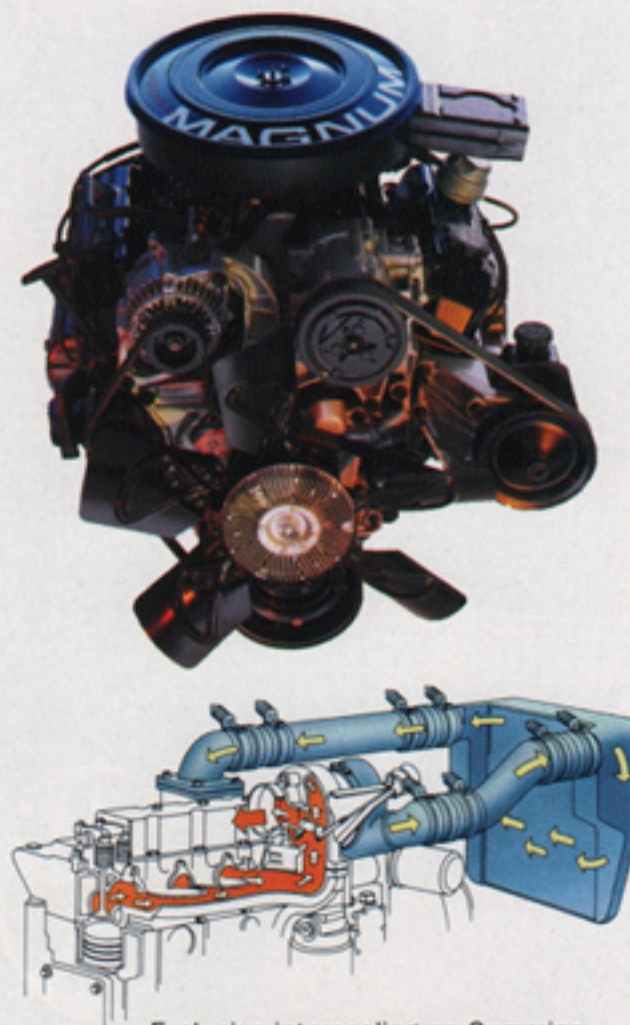
New progressive-bore throttle body (patented by Dodge) for better engine response and more horsepower.

"...the power and torque gains in Dodge's light truck 3.9L V6 and 5.2L V8 for MY 1992 are too drastic to ignore."

—Chilton's Automotive Industries



New MAGNUM SMPI 5.2-liter V8 (above) and 3.9-liter V6 (at right) share numerous improvements.



Exclusive intercooling on Cummins Turbo Diesel maximizes turbocharger efficiency while minimizing emissions.

turbocharging and heavy-duty truck use, the Cummins Intercooled Turbo Diesel has more big-rig features and heavy-duty components than any competitive diesel engine, including an exclusive standard intercooler, a proven turbocharger, open direct-chamber injection, the largest crankshaft and connecting rods in its class, seven main bearings, gear-driven components, and a heater grid.

New five-speed manual transmissions.

Both Ram Pickup and Dakota feature new heavy-duty five-speed manual transmissions built specifically for each truck line. In addition, both transmissions allow smoother application of power and feature an overdrive fifth gear for improved highway fuel economy.

*Based on preliminary comparative data at time of printing.



Cummins Intercooled Turbo Diesel.



Power Ram 150 4x4 Special LE shown in Black Clear Coat and Light Sand Metallic Clear Coat.



Ram Club Cab Special LE interior with available bucket seats shown in Spice.

Trailer Towing Capability		Engine/Transmission Availability	
Model	Max. Trailer Wt.	3.9L V6	5.2L V8
150 4x2	8,500 lbs.	5-spd. manual OD	5-spd. manual OD
150 Club Cab 4x2	8,200 lbs.	3-spd. automatic (4x2 only)	4-spd. automatic HD OD
250 4x2	11,900 lbs.	4-spd. automatic OD (4x4 only)	4-spd. automatic HD OD
250 Club Cab 4x2	11,600 lbs.		5-spd. manual OD
350 4x2	11,900 lbs.		4-spd. automatic HD OD
350 Dually 4x2	11,700 lbs.		5-spd. manual OD
350 Dually Club Cab 4x2	11,400 lbs.		4-spd. automatic HD OD
150 4x4	8,100 lbs.		5.9L Diesel
150 Club Cab 4x4	7,700 lbs.		5-spd. manual HD OD
250 4x4	11,400 lbs.		4-spd. automatic HD OD
250 Club Cab 4x4	11,100 lbs.		
350 4x4	11,400 lbs.		
350 Dually 4x4	11,200 lbs.		
350 Dually Club Cab 4x4	10,900 lbs.		

Engine and transmission combinations shown are not available on all models. Consult your dealer for actual availability. OD-Overdrive. HD-Heavy-duty.

Advantage RAM PICKUP

"...the equipment to handle the toughest jobs with ease..." *Road & Track Truck Buyer's Guide*

New MAGNUM Series engines produce more power, torque and payload than comparable Fords or Chevys. The new MAGNUM 3.9-liter V6 and 5.2-liter V8 engines feature state-of-the-art design and sequential multipoint fuel injection for best-in-class power.

The V6 output is rated at 180 hp at 4,800 rpm, with 220 pound-feet of torque at 3,200 rpm.

Output for the V8 is rated at 230 hp at 4,800 rpm, with 280 pound-feet of torque at 3,200 rpm.

More value with Customer-Preferred™ Advantage Packages. These are packages of valuable equipment that let you equip a Ram Pickup the way you like it,

while saving you money with big discounts.* Whether it's our Super LE Package that gives you a MAGNUM V8, automatic transmission and air conditioning at no charge, or our Work Package that includes items like a 30-gallon fuel tank and rear step bumper, Dodge offers a truck to suit your special needs at a price that's right.

More durability. Ram Pickups are built to last with a long

list of heavy-duty components and design features like carbon steel frames, semi- or full-floating rear axles with carbonized alloy steel gears, dual hydraulic brake systems, high-torque starting motors, heavy-duty batteries, double-wall construction, and more. It all adds up to a lineup of trucks that can do the job—big or small.

*Package savings based on price of equipment if purchased separately.



Dodge Ram 350 Super LE Dually Club Cab with Cummins Intercooled Diesel power shown in Black Clear Coat.



Dakota 4x4 Sport shown in Colorado Red Clear Coat. Dakota 4x2 Sport shown in Electric Blue Clear Coat.



Dakota Special LE Club Cab shown in Spice.

Trailer Towing Capability

Model	Max. Trailer Wt.
Dakota "S"	2,800 lbs.
Dakota 4x2	6,900 lbs.
Dakota Club Cab 4x2	6,700 lbs.
Dakota Club Cab 4x4	6,400 lbs.
Dakota 4x4	6,600 lbs.

Consult dealer for information regarding necessary equipment and driveline combinations for proper trailer towing applications.

Engine/Transmission Availability

2.5L 4-cyl.	5-spd. manual OD
3.9L V6	5-spd. manual HD OD 4-spd. automatic OD
5.2L V8	4-spd. automatic HD OD

Engine and transmission combinations shown are not available on all models. Consult your dealer for actual availability. OD-Overdrive. HD-Heavy duty.

Advantage DODGE DAKOTA

"...a sporty pickup that gives us a reason to smile while driving. From concept to fit and finish, the truck is excellent."

BOAT Magazine

New MAGNUM Series engines produce more power, torque, payload and towing than comparable Fords, Chevys and imports.

The new 3.9-liter V6 and 5.2-liter V8 engines give

Dakota outstanding towing and payload power that no compact truck comes close to matching. In fact, with the optional V8, Dakota has a 6,900-pound towing capacity comparable to many full-size pickups.

More full-size performance in a midsize pickup. Midsize Dakota is the only truck in its class to offer full-size pickup features at compact

truck prices. With a larger frame, longer wheelbase and wider track than compact pickups, Dakota has the work versatility and smoother ride of a full-size pickup—plus the maneuverability and good fuel economy of a compact pickup.

More cab and cargo room. Dakota's unique midsize offers more room in back for your cargo and more room

inside the cab for you than competitive compact pickups. **More value with Customer-Preferred™ Advantage Packages.** These packages allow you to equip your Dakota with popular equipment and save you money with big discounts* equal to major options like air conditioning and automatic transmission at *no charge*.

*Package savings based on price of equipment if purchased separately.



Dakota 4x2 Special LE shown in Dark Spectrum Blue Metallic Clear Coat and Light Sand Metallic Clear Coat.



Dakota Club Cab 4x2 Super LE shown in Black Clear Coat and Light Sand Metallic Clear Coat.



Dodge Power Ram 50 shown in Bright Silver Metallic Clear Coat.



Advantage

DODGE RAM 50

"...bargain-priced... can handle a substantial load... One talented little truck." *Road & Track Truck Buyer's Guide*

More small pickup performance from standard MPI power. Dodge Ram 50's standard 2.4-liter engine features multipoint fuel injection for hardworking horsepower and torque with excellent fuel economy. A five-speed manual transmission with overdrive is also standard.

More payload. Dodge Ram 50 hauls big loads with a standard payload of 1,580 pounds. Dodge Power Ram

50 has a standard payload rating of 1,805 pounds. And a ton-plus payload rating of 2,300 pounds is available on the Ram 50 Longbed. **More off-road toughness.** Skid plates and an independent front torsion-bar suspension are standard to help you and your Dodge Power Ram 50 take on rough four-wheel-drive terrain.

More shift-on-the-fly convenience. Automatic locking front hubs are standard on Power Ram 50 so you can shift from two-wheel drive to four-wheel drive without leaving the cab.



Ram 50 SE interior shown in Charcoal.

Engine/Transmission Availability

2.4L 4-cyl.	5-spd. manual OD 4-spd. automatic OD
-------------	---

Engine and transmission combinations shown are not available on all models. Consult your dealer for actual availability. OD-Overdrive.

Trailer Towing Capability

Model	Max. Trailer Wt.
Ram 50 4x2	3,500 lbs.
Power Ram 50 4x4	3,500 lbs.

Consult dealer for information regarding necessary equipment and driveline combinations for proper trailer towing applications.



Ramcharger 4x2 and 4x4 Canyon Sport models shown in Black Clear Coat, Bright White Clear Coat, Colorado Red Clear Coat and Dark Forest Green Clear Coat—all with a secondary lower color of Light Sand Metallic Clear Coat.

Advantage DODGE RAMCHARGER



Ramcharger LE interior shown in Charcoal.

"...it climbs a rocky hill or slogs through doorsill-deep mud as effortlessly as it drives along the highway."

Road & Track Truck Buyer's Guide

More standard power.

Ramcharger features the new standard MAGNUM 5.2-liter SMPI V8 engine with a heavy-duty four-speed automatic overdrive transmission.

More towing and payload.

Properly equipped, Ramcharger simply over-

powers the competition with 7,500 pounds of towing ability on 4x2 and 4x4 models. Payload capacity is 1,335 and 1,680 pounds on 4x2 and 4x4 models respectively.

More savings. Customer-PreferredSM Advantage Packages allow you to equip Ramcharger with popular equipment and save you money with big discounts* on items such as the MAGNUM V8 engine, air conditioning, and much more.

* Package savings based on price of equipment if purchased separately.

Engine/Transmission Availability

5.2L V8	4-spd. automatic HD OD
5.9L V8	4-spd. automatic HD OD

Engine and transmission combinations shown are not available on all models. Consult your dealer for actual availability. OD-Overdrive. HD-Heavy-duty.

Trailer Towing Capability

Model	Max. Trailer Wt.
Ramcharger 4x2	7,500 lbs.
Ramcharger 4x4	7,500 lbs.

Consult dealer for information regarding necessary equipment and driveline combinations for proper trailer towing applications.

Manual OD
Automatic OD

Not available on all models.
4-wheel drive.

Max. Trailer Wt.
3,500 lbs.
3,500 lbs.

Equipment and driveline



Ram Maxivan 350 shown in Colorado Red.



Ram Wagon 250 LE shown in Dark Quartz Gray Metallic and Platinum Silver Metallic.

ADVANTAGE

RAM VAN AND WAGON

"For towing, cargo hauling or people moving, Dodge Ram Wagons are hard to beat." *Road & Track Truck Buyer's Guide*

More standard MAGNUM power. Ram Wagon's new standard MAGNUM 3.9-liter SMPI V6 as well as its optional MAGNUM 5.2-liter SMPI V8 engines have been extensively improved to enhance performance, driveability and serviceability.

More customer satisfaction.

Dodge Ram Vans and Wagons have been voted number one in customer satisfaction.*

More savings. Customer-PreferredSM Advantage Packages provide valuable equipment such as air conditioning and more at no charge,[†] allowing you to equip your Ram Van or Wagon the way you like it at significant savings.

*1991 J.D. Power Light-Duty Truck Survey.

[†] Package savings based on price of equipment if purchased separately.



Ram Wagon LE Decor interior shown in Crimson Red.

Engine/Transmission Availability

3.9L V6	5-spd. manual OD 3-spd. automatic
5.2L V8	3-spd. automatic 4-spd. automatic
5.9L V8	4-spd. automatic HD

Engine and transmission combinations shown are not available on all models. Consult your dealer for actual availability. OD-Overdrive. HD-Heavy-duty.

Trailer Towing Capability

Model (Ram Wagon)	Max. Trailer Wt.
150 (109.6"/127.6" wb)	6,100 lbs.
250 (127.6" wb)	8,400 lbs.
350 (127.6" wb)	8,600 lbs.
(Ram Van)	
150 (109.6"/127.6" wb)	6,300 lbs.
250 (127.6" wb)	8,900 lbs.
350 (127.6" wb)	9,000 lbs.

Consult dealer for information regarding necessary equipment and driveline combinations for proper trailer towing applications.



Power Ram 350 Dump Truck with Cummins Turbo Diesel engine.



Dakota Chassis Cab with V6 engine.



Caravan C/V.

Advantage DODGE COMMERCIAL

More MAGNUM muscle.

Dodge trucks have what it takes to handle the heavy demands of commercial use with new MAGNUM Series 3.9-liter V6, 5.2-liter V8 and Cummins Intercooled Turbo Diesel engines. For instance, the Ram Pickup 350 Dually 4x4 tows up to 11,200 pounds, when properly equipped. And

Ram Van payloads range from 1,170 pounds to 4,365 pounds.

More value. Customer-PreferredSM Advantage Packages let you equip your Ram and Dakota Pickup, Ram Chassis Cab, Ram Van, Ram Wagon and Caravan C/V the way you like it while saving you money with big discounts* on equipment

such as the MAGNUM V8 engine and automatic transmission at *no charge*.*

More selection. Dodge Ram Wagon and Ram Van have a wider choice of models and rear/side door

choices than the competition. And Dakota is the industry's only midsize pickup and chassis cab available with a V8 engine.

* Package savings based on price of equipment if purchased separately.

Engine/Transmission Availability (Caravan C/V)

2.5L 4-cyl.	5-spd. manual
2.5L 4-cyl.	3-spd. automatic
3.0L V6	3-spd. automatic
3.3L V6	4-spd. automatic

Engine and transmission combinations shown are not available on all models. Consult your dealer for actual availability.

Chrysler Credit Financing

Chrysler Credit offers a variety of finance programs that help make your new Dodge car or truck even more affordable. These special finance and leasing programs are designed to meet the needs of today's automotive buyer. They include Advantage: Gold Key Lease, Gold Key Plus, College Graduate Plans, Retail Financing and other special payment plans. Ask your salesperson for details.



Consider Leasing

Many of today's new car prospects are wisely considering leasing as an alternative to buying. Leasing a new Dodge car or truck usually involves a small security deposit and a first-month's lease payment. Monthly payments are usually less than financing a new car purchase. Ask your dealer for details.

Chrysler Purchase Assistance Program for the Physically Challenged

Cash reimbursements of up to \$500 are available for qualified adaptive driving devices on 1992 Chrysler Corporation cars and trucks. For further information, contact your dealer or the PHYSICALLY CHALLENGED RESOURCE CENTER at 1-800-255-9877.

Mopar Customer Care

There's only one sure way to keep your Dodge car or truck performing at its optimum mile after mile. Just make sure it's serviced regularly at your nearby Dodge dealer. That's where you'll find first-rate mechanics specially trained in the maintenance and repair of your new Dodge. They've been provided with all the sophisticated equipment today's cars and trucks demand. And they have immediate access to a complete stock of genuine Mopar replacement parts that can make the difference between trouble-free driving and the unacceptable alternative.

Chrysler Corporation Limited Warranty Protection

Every Chrysler Corporation vehicle comes with the protection of a Chrysler Corporation Limited Warranty. See your dealer for details.

Dodge Reminds You to "Tread Lightly"

Dodge urges that all off-road vehicles be used with an appreciation of the natural beauty and resources of our land. Practicing "Tread Lightly" policies helps to protect nature, ensuring that it will be ours to enjoy for many years to come. Dodge supports the U.S. Forest Service's "Tread Lightly" Program and reminds you that when you go off-road, go easy on the environment.

TREAD LIGHTLY!
ON PUBLIC AND PRIVATE LAND

Buckle up for safety.

Form No. 74-383-9216 (1.0MM) Litho in U.S.A.



OFFICIAL SPONSOR OF THE
1992 U.S. OLYMPIC TEAM



36 USC 380

Certain models, packages and options are subject to specific restrictions, requirements or late availability. See your dealer for the latest ordering information.

All product illustrations are based on current information at the time of publication approval. Although descriptions are believed correct, accuracy cannot be guaranteed. Chrysler Corporation reserves the right to make changes from time to time without notice or obligation in prices, specifications, colors and materials, and to change or discontinue models. See your dealer for the latest information.