

1985

CHRYSLER

---

# NEW YORKER





Available leather-and-vinyl 50/50 seat shown in Brown, with dual armrests, reclining seatbacks, and center console with seat controls.



**About this catalog.** We have tried to make this catalog as complete as possible. And we hope you will find it useful. However, since the time of printing, some of the information you'll find here may have been updated. Your dealer has details, and you should ask him for current information before ordering. Some of the equipment shown or described throughout this catalog is available at extra cost.

Turbo New Yorker shown in Mink Brown Pearl Coat with Brown vinyl landau roof.

## TURBO NEW YORKER



**Luxury Refined. Technology Redefined.** Does luxury have a limit? Technology a border? Chrysler designers and engineers don't believe so. That's why they keep fine-tuning near-perfection.

They'd already produced New Yorker, the ultimate high-tech luxury sedan, by retaining the best aspects of New Yorker's elegant past: comfort, room, ride, reliability. They brought classic tradition into modern focus with front-wheel drive and electronic controls and accessories.

They boosted acceleration and passing power with the optional Chrysler-built 2.2-liter turbocharged engine with electronic fuel injection (EFI) that produces 45 percent more horsepower than New Yorker's base Mitsubishi-built 2.6-liter engine.

For 1985, they've refined New Yorker even more. More passenger comfort with new standard rear seat headrests. More convenience with remote control cable releases for deck lid and fuel filler door, and a new overhead storage console with reading/courtesy lamps.

Refinement. That's 1985 New Yorker. A little more than it's ever been before.



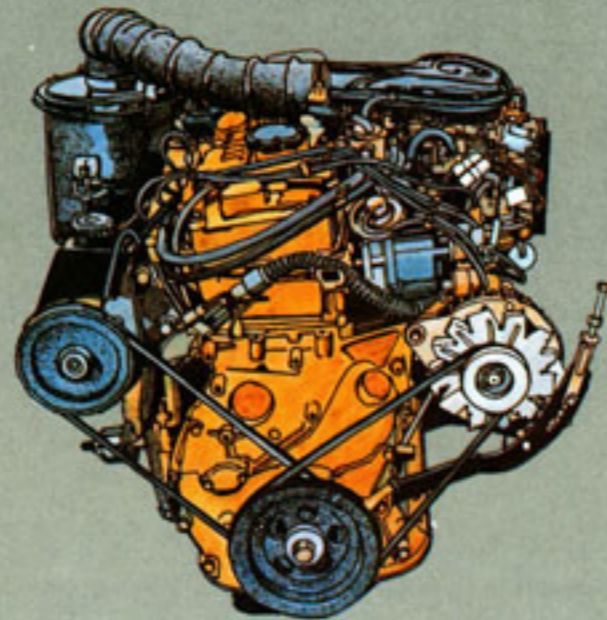
Turbo New Yorker shown in Radiant Silver Crystal Coat.

**TECHNOLOGY MOVES FORWARD...ON FRONT-WHEEL DRIVE.  
TECHNOLOGY ACCELERATES...WITH TURBO POWER.**



New Yorker has a reputation to uphold. A reputation for quality, for durability, for technological advancement.

New Yorker rolls smoothly, quietly and comfortably into its newest year, offering drivers the space-saving stability of front-wheel drive, and the quiet power of its standard Mitsubishi-built 2.6-liter MCA-



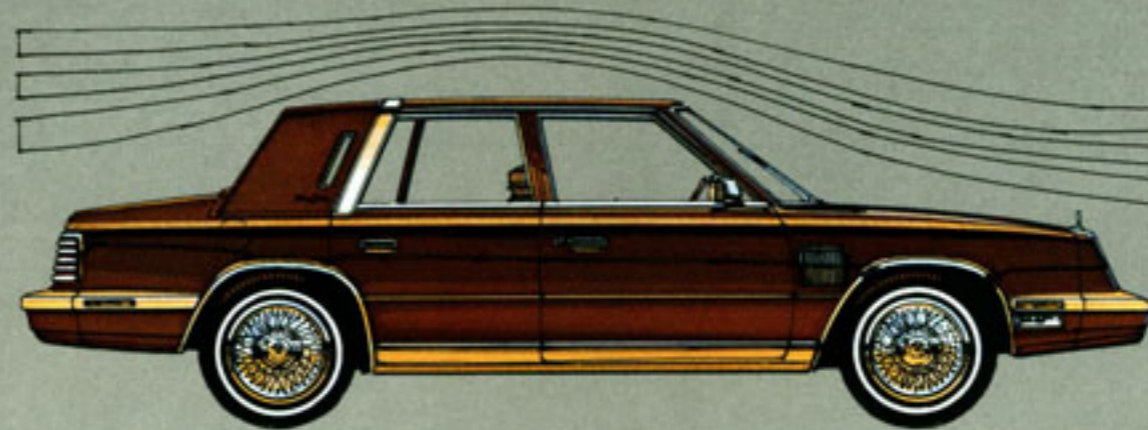
JET engine (above).

Offering the power boost of turbocharging with the optional 2.2-liter EFI engine (detail, top) that features Chrysler's

water-cooled turbocharger for improved performance, power, and acceleration.

Offering fully independent front dual-path Iso-Strut/rear coil spring suspension for precise control and smooth ride. Offering the solid feel of rack-and-pinion steering.

The whole New Yorker is not merely the sum of its parts. Care and quality must be added in, too. For example: the



accuracy of robotic welding (above, right); extensive use of galvanized sheet metal and protective urethane coating for the lower body; a seven-step dip-and-spray body process; computer-aided design and

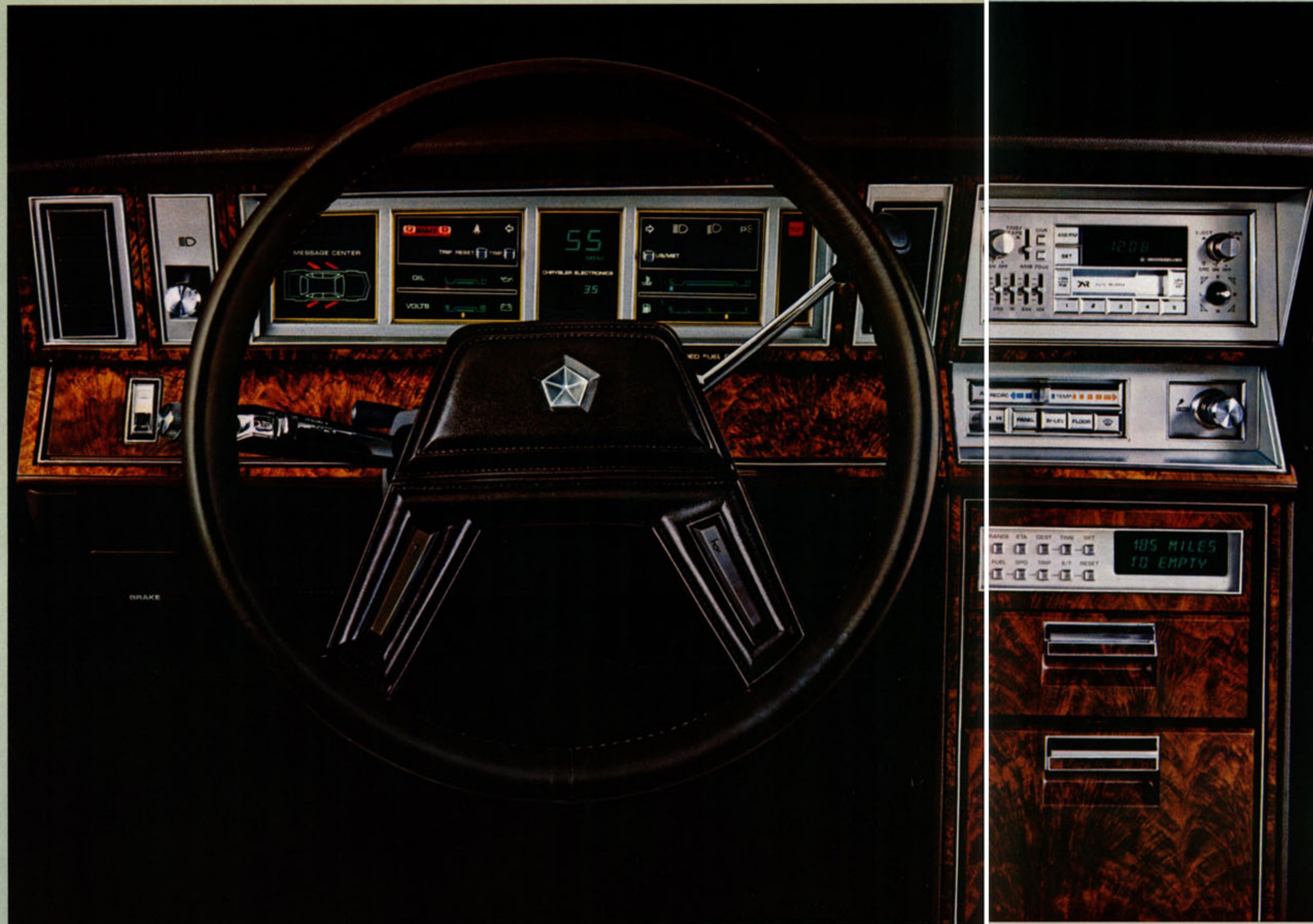
manufacturing for quality.

Because of these and other quality steps, the Chrysler Corporation backs the New Yorker with its 5/50 Protection Plan which extends the limited war-



ranty coverage on New Yorker beyond the normal 12-month/12,000-mile expiration point to five years or 50,000 miles, whichever comes first, for power train components, including engine and transaxle—plus outer panel rust-through protection. Fleet and lease vehicles are excluded. A deducti-

ble may apply. See your dealer for details. The 5/50 Protection Plan covers the optional turbocharged 2.2-liter engine, making it the first turbo engine to be covered for this extended period.



**ELECTRONIC AND ELEGANT.**



Information accented with elegance. That's the view from behind the wheel. Handsome walnut woodtone treatments surround an array of electronic instruments to orchestrate your journeys. A car graphic message center warns of low washer fluid or fuel, or of deck lid or door ajar. The electronic instrument cluster displays oil pressure, voltage, fuel level and engine coolant temperature, and has digital readouts for speedometer, odometer and trip odometer. New Yorker will even give you directions and temperature reports—with the optional eight-point compass and outside temperature digital readout indicators available for the overhead console (above) with the Luxury Equipment Discount Package. The optional Electronic Navigator provides instant trip information such as miles per gallon and driving range. An electronically tuned AM radio with integral digital clock is standard. Three other radio systems are available, including the new AM stereo\*/FM stereo Ultimate Sound radio and sound system with graphic equalizer. The instrument panel has outlets for the ventilation system and optional air conditioning. New controls for these systems provide more precise temperature control and more options for directing heated or cooled air. The convenient center console contains storage areas, cassette tape bin, coin holder, ash receiver, and slide-out cup holder.

\*Limited AM stereo reception may be experienced in some areas because some AM stereo broadcasting is not compatible with this radio's reception capability.



New Yorker shown in Black Crystal Coat.



**STYLES CHANGE. STYLE ENDURES.**



New Yorker is formality...with flavor. The New Yorker tradition of stylish formality continues in 1985. And there are three new exterior colors to choose from.

New Yorker's distinctive styling cascades over an aerodynamically slanted hood to its classic grille and quad halogen headlamps.

New Yorker's decorative front fender louvers, bodyside and deck lid accent stripes, and standard wire wheel covers (with integral locks) add subtle luxurious touches. Sporty cast aluminum road wheels are optional. Steel-belted radial white sidewall tires are standard.

Luxury has always been standard on New Yorker. This year, opulence is available...in the Luxury Equipment Discount Package. Included are such options as the 2.2-liter EFI turbo engine, air conditioning, electric rear defroster, Electronic Navigator, and leather 50/50 dual power seats (see page 16 for complete package listing). Total manufacturer's suggested retail cost of the package is less than the price of the same options purchased separately.





## SPATIAL INTEGRITY.



Not just room for five, but *enough* room for five to ride in quiet luxury. And the addition of rear seat headrests provides passengers even more comfort.

Up front, driver and passenger can settle into individual pillow-style velvet cloth seats. Each seat has its own folding center armrest; dual consolets contain storage space and seat recliner controls. For 1985, power seats are available for passenger as well as driver.

Woodtones accent the velvet cloth door trim panels with their integral armrests and driver controls for the dual power adjustable side mirrors.

A compact overhead console has two compartments, one to store sunglasses, the other to house a garage door opener. The compartment accommodates most available openers, which, after installation, can be activated by touching the compartment door. Driver and passenger reading lamps, which also function as entry courtesy lights, are mounted on the console.

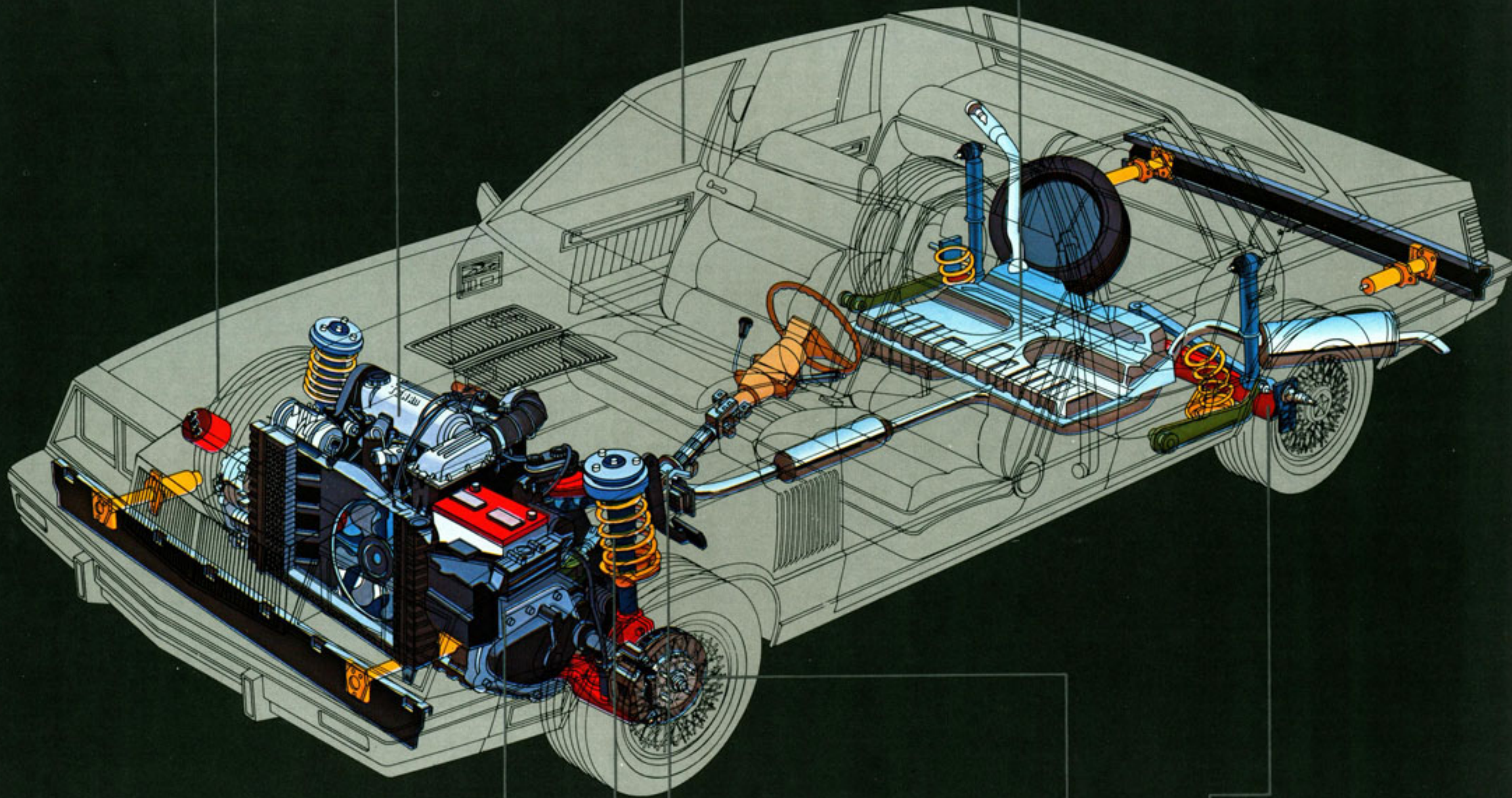
New for the 1985 New Yorker is a cable release system for the deck lid and the fuel filler door which permits either to be opened without the car's power on. For security, the deck lid release system can be set to be opened *only* with a key.

**Front-wheel drive.** Transverse mounted engine/trans-axle concentrates weight over front wheels for efficiency, stability, and more interior room.

**Chrysler-built 2.2-liter turbocharged engine** with electronic fuel injection, and a Garrett turbocharger with water-cooled bearing housing is optional. Standard is the Mitsubishi-built 2.6-liter MCA-JET Silent Shaft engine.

**Insulation.** Special sound insulation throughout the body and special body/chassis mounting reduce road noise and shock.

**Fourteen-gallon fuel tank.** Large capacity increases driving range and reduces fuel stops.



**Chrysler-built TorqueFlite automatic transaxle.** Wide-ratio gearing improves acceleration through the gears without loss of fuel economy.

**Dual-path Iso-Strut front suspension.** Rubber-isolated to prevent transmission of

road shocks, the suspension has independent front coil springs and gas-charged Iso-Struts combined with an integral linkless antisway bar.

**Power-assisted rack-and-pinion steering.** Provides low turning effort and fast re-

sponse for solid road feel and excellent directional stability.

**Power brakes.** Dual diagonal. Front ventilated disc and self-adjusting rear drum brakes combine for consistently smooth and sure stops.

**Trailing arm rear suspension.** Combination of beam axle with trailing arms, coil springs, adjacent gas-charged shock absorbers, track bar and torsion tube anti-roll control provides a smooth, level ride.

## FOR THE MOST LUXURIOUS JOURNEYS... NEW YORKER OPTIONS.

Certain models, packages and options are subject to specific restrictions, requirements, and late availability. Consult your dealer for current ordering information.



**Ultimate Sound System.** Exactly what the name implies. The electronically tuned AM stereo\*/FM stereo radio receiver includes a stereo cassette tape player, the Dynamic Noise Reduction (DNR)† system and six-speaker sound. The system also features memory scan, up-and-down scan, five-channel graphic equalizer, joystick balance/fader control, 36 watts of power, metal tape capability, and an integral digital clock.



**Electronic Navigator.** On demand, the Electronic Navigator provides instant digital display of travel computations, includ-

ing range; average and current miles per gallon; trip odometer; average speed, date and time...in U.S. or metric measurements.



**Automatic speed control.** Automatically holds the selected mile-per-hour speed, helping to improve fuel economy at highway cruising speeds.



**Leather-wrapped steering wheel.** A touch of class and a soft touch on the road with the luxury two-spoke, leather-wrapped steering wheel.

**Tilt steering column.** Adjusts to six positions to suit your preferred driving position, and makes entry and exit easier.



**Illuminated vanity mirror.** Illuminated mirror (on back of passenger sun visor) is a last-minute convenience for those "finishing touches."



**Air conditioning.** Bi-level ventilation increases air circulation and helps reduce cold spots. New controls for 1985 provide more precise temperatures and a more varied selection of air direction.



**Power windows, door locks and mirrors.** The driver controls New Yorker's standard power windows, optional power door locks and power adjustable dual outside mirrors from a console conveniently located in the left armrest.

\*Limited AM stereo reception may be experienced in some areas because some AM stereo broadcasting is not compatible with this radio's reception capability.

†DNR (Dynamic Noise Reduction) is a trademark of National Semiconductor Corporation.

## NEW YORKER OPTIONS

- Air conditioning\*—with bi-level ventilation
- Battery—500-ampere, maintenance-free; low-profile, heavy-duty
- Defroster—rear window; electrically heated (required at extra cost on all sedans registered in New York state); includes tinted rear window
- Door locks—power
- Electronic Navigator
- Emissions controls—California (required at extra cost on all vehicles registered in California)
- Engines—see Engine Chart
- Floor mats—accessory, front and rear; color-keyed
- Illuminated entry system
- Mirror—interior, right visor vanity; illuminated
- Moldings—bodyside protective; color-keyed
- Moldings—door edge protectors; bright (not available with optional bodyside protective moldings)
- Radio—AM/FM stereo; electronic tuning; four-speaker sound; integral digital clock
- Radio—AM stereo<sup>1</sup>/FM stereo, premium; electronic tuning; Seek-and-Scan; cassette player with automatic reverse; Dynamic Noise Reduction (DNR);<sup>1</sup> six-speaker sound; integral digital clock
- Radio—AM stereo<sup>1</sup>/FM stereo, 36-watt Ultimate Sound; electronic tuning; memory scan; up-and-down scan; cassette player with automatic reverse and metal tape capability; Dynamic Noise Reduction (DNR);<sup>‡</sup> five-channel graphic equalizer; joystick balance/fader control; six-speaker sound; ambience sound control; integral digital clock
- Radio—Premium Speaker Package; includes power amplifier and coaxial rear speakers (not available with standard AM or Ultimate Sound radios)
- Seat—power; left
- Seat—power; left and right
- Speed control—automatic
- Steering column—tilt
- Steering wheel—luxury two-spoke; leather-wrapped
- Suspension—sport handling; includes front and rear anti-sway bars; higher control front Iso-Struts and rear shocks; firm-feel quick-ratio power steering (recommended with turbo option)
- Tire—spare; conventional
- Undercoating
- Wheels—road; cast aluminum, 14-inch (four)

\*There are special cooling requirements for field-installed air conditioning. Failure to follow these requirements may invalidate warranty. See dealer for details.

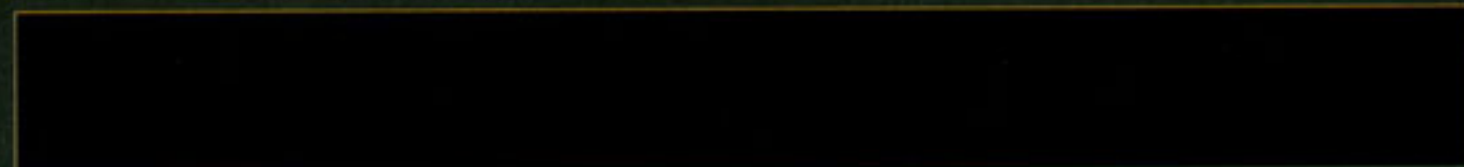
<sup>1</sup>Limited AM stereo reception may be experienced in some areas because some AM stereo broadcasting is not compatible with this radio's reception capability.

<sup>‡</sup>DNR (Dynamic Noise Reduction) is a trademark of National Semiconductor Corporation.

## LUXURY EQUIPMENT DISCOUNT PACKAGE

- 2.2-liter turbocharged engine
- Air conditioner with low travel switches
- Overhead console with compass and outside temperature readouts\*
- Electric rear window defroster
- Illuminated entry system
- Power door locks
- Accessory floor mats, front and rear
- Illuminated passenger side visor vanity mirror
- Electronic Navigator
- AM/FM stereo radio with electronic tuning; integral digi-

## NEW YORKER EXTERIOR COLORS



Black Crystal Coat



Gunmetal Blue Pearl Coat\*



Ice Blue Crystal Coat



Nightwatch Blue Crystal Coat



Mink Brown Pearl Coat



Cream Crystal Coat



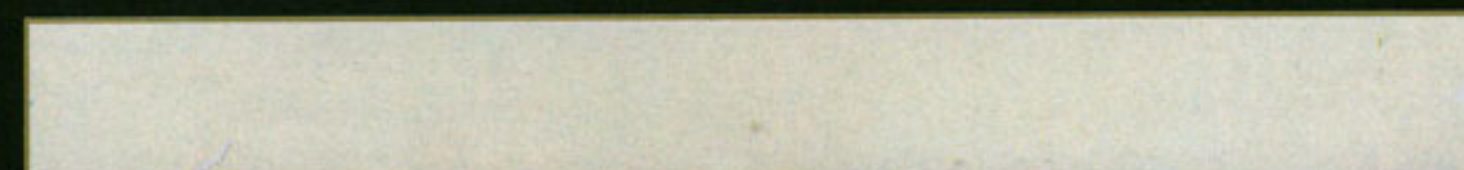
Gold Dust Crystal Coat



Garnet Red Pearl Coat\*



Radiant Silver Crystal Coat



White Crystal Coat

\*Extra cost.

Due to occasional printing irregularities, the colors shown may vary slightly from actual hues. See your dealer for accurate color chips.

All product illustrations and specifications are based on authorized information. Although descriptions are believed correct at publication approval, accuracy cannot be guaranteed. Chrysler Corporation reserves the right to make changes from time to time, without notice or obligation, in prices, specifications, colors and materials, and to change or discontinue models. See your dealer for the latest information.

- tal clock<sup>1</sup>
- Power seats, left and right
- 50/50 leather seats (cloth may be substituted at no extra cost)
- Automatic speed control
- Tilt steering column
- Luxury leather-wrapped steering wheel
- Undercoating

\*Available in package only.

<sup>1</sup>May be upgraded.



## FIVE-YEAR/50,000-MILE PROTECTION PLAN

Warranty protection is a matter of confidence. And Chrysler is so sure of the care and precision that go into each Chrysler New Yorker that they offer the Five-Year/50,000-Mile Protection Plan. It speaks for itself.

Upon expiration of the normal 12-month/12,000-mile new vehicle limited warranty, limited warranty coverage is extended on power train components, including engine, transaxle, axle, and turbocharger—plus outer panel rust-through protection—to five years/50,000 miles, whichever comes first. A deductible may be required. Fleet and lease vehicles excluded. See your dealer for details.

## OPTIONAL 5/50 SERVICE CONTRACT COVERAGE

Chrysler Corporation offers a 5/50 Added Coverage (in Florida, Added Value Plan) Service Contract which provides protection against rising service and parts costs for specified major repairs not included in the 5/50 Protection Plan. Coverage starts on the specified components in the plan after your vehicle's basic 12-month/12,000-mile warranty expires on these components and continues for five years or 50,000 miles (whichever occurs first) from the vehicle's original warranty start date. A deductible applies.

The plan provides an allowance for alternate transportation and towing.

Ask your dealer for details.

## DIMENSIONS, WEIGHT AND CAPACITY

- Length<sup>1</sup>: 185.7"
- Width: 68.0"
- Height: 53.9"
- Wheelbase: 103.3"
- Turning Diameter: 36.2'
- Curb Weight (estimate): 2,795 lbs
- Trunk Capacity: 17.1 cu ft
- Passenger Capacity: 5
- Fuel Capacity: 14 gal

<sup>1</sup>Includes bumper guards.

Form No. 81-005-5003 8/84(250M)  
Litho in U.S.A.

## ENGINES AND TRANSAXLES\*

Type	Displacement	Bore & Stroke	Compression Ratio	Horsepower	Torque	Transaxle Availability
				SAE Net @ RPM		
4-cylinder OHC standard	2.6-liter (156 CID) <sup>†</sup>	3.59" x 3.86"	8.7:1	101 hp @ 4,800	140 ft-lb @ 2,800	Standard: automatic (3.02 OTGR)
4-cylinder OHC optional	2.2-liter (135 CID) turbocharged; electronic fuel injection <sup>‡</sup>	3.44" x 3.62"	8.1:1	146 hp @ 5,200	168 ft-lb @ 3,600	Standard: automatic (3.02 OTGR)

OTGR—Overall top gear ratio. \*Emissions controls required at extra cost on all vehicles registered in California—not available otherwise. <sup>†</sup>Manufactured by Mitsubishi Motors Corporation. <sup>‡</sup>Turbocharged engine includes dress-up, functional hood louvers, bright exhaust tip, Turbo Identification, stainless steel exhaust system and multi-point fuel injection. Premium unleaded fuel recommended. Turbocharged engine not recommended for trailer towing.

## STANDARD FEATURES

- Acoustic Package • Alternator—75-ampere • Armrests—door: two front, two rear • Ash receivers—one front, two rear • Battery—400-ampere, maintenance-free: (test indicator on all batteries) • Brake—parking: foot pedal operated • Brakes—power dual diagonal: disc front, self-adjusting drum rear • Bumper guards—front and rear • Bumpers—energy-absorbing: color-keyed; with bright rub strips • Carpeting—passenger compartment: color-keyed • Cigar lighter • Clock—electronic digital: integral with radio • Coat hooks • Console—overhead: includes sunglass compartment; garage door opener storage and actuator; twin map/courtesy lamps • Console—storage: includes ash receiver; storage/cassette bins; cup holder; coin holder; lower bin light and lock • Coolant overflow reservoir • Corrosion protection—extensive use of galvanized steel; urethane protective coating • Deck lid—easy-close • Deck lid release—remote control: cable-operated (defeat mechanism located in trunk) • Door release handle—interior: easy-open, with integral rocker-type lock/unlock system • Fuel filler cap tether • Fuel filler door release—remote control: cable-operated • Fuel tank—14-gallon: with curbside fuel filler door • Glass—tinted: all windows • Head restraints—front right and left: adjustable rear integrated in seatback • Headlamp bezel—bright • Headlamps—halogen: low/high beams • Headliner—cloth-covered lightweight molded fiberglass: color-keyed • Heater and defroster—upper level: forced air with four instrument panel outlets; lower: Ram Air outlets • Hood—counterbalanced • Hood ornament—Pentastar: stand-up crystalline • Hood release—inside • Horns—dual • Instrument panel—woodtone: butterfly walnut • Instrument panel cluster—electronic: includes Car Graphic

- Message Center; digital speedometer; odometer; trip odometer; analog read-outs for oil pressure; voltage, fuel level and engine coolant temperature • Insulation—body: sound • Insulation—hood: pad • Latches—door: sound deadened for quiet operation • License plate bracket—front (standard in states where required) • Lights—ash receiver; backup; door-mounted courtesy; glove box; headlamp/dome switch; ignition switch with time delay; cornering lamps; parking brake warning; rear courtesy/reading lights; flashing front side markers with turn signal; front door courtesy and dome light switches; rear door dome light switches; trunk; underhood • Lock—forward console lower bin • Lock—glove box • Lock cover—deck lid with Pentastar • Mirror—interior, rearview: day/night • Mirrors—exterior, dual power adjustable: bright • Moldings—belt (wide); deck lid (lower and quarter extension); drip rail; full wheel opening; side marker bezels (front and rear); sill; upper door frame; windshield: bright • Multifunction steering column lever—controls for windshield wiper/washer, headlamp dimmer, turn signals, lane change feature, and optical horn • Nameplate—"Chrysler" on deck lid, left side: bright • Nameplate—"New Yorker" on deck lid, right side • Radio—AM: electronic tuning; integral digital clock (may be deleted for credit on factory orders) • Restraint system—unibelt, deluxe: with tension reliever and automatic release: color-keyed • Roof—landau; includes coach lamps and bright roof band: padded vinyl • Roof assist handles—interior • Steering—power: rack-and-pinion • Steering column—color-keyed • Steering wheel—luxury two-spoke: color-keyed • Stripes—upper bodyside, lower deck lid • Suspension—front: Iso-Strut with coil springs around the shock absorbers, linkless antisway bar; rear: beam axle with trailing flex arms, coil springs and shock absorbers

- Taillamps—wraparound: with bright accents • Tire—spare: compact high-pressure, low-mileage • Tire tread life wear indicators • Tires—P185/75R14 steel-belted radial white sidewall • Transaxle—TorqueFlite three-speed: automatic • Trunk dress-up—completely carpeted • Voice Alert System—electronic • Wheel covers—wire, locking: 14-inch (four) • Windows—power • Windshield wipers—deluxe: with intermittent wipe and wet arm washers

## STANDARD SAFETY FEATURES

- Safety-Rim wheels • Combination lap-shoulder belts for the driver and right front passenger, and lap belts for all other passengers • Seat belt reminder system • Energy-absorbing steering wheel • Dual braking system with separate brake fluid reservoirs in the master cylinder • Brake fluid pressure loss warning light (also serves as indicator when parking brake is applied) • Hazard warning flashing system • Turn signals with lane-change feature • Electronic ignition • Backup lights • Energy-absorbing front seatbacks • Inside and outside rearview mirrors • Side marker lights and reflectors • Fade-resistant front disc brakes • Electric windshield washers and wipers • Ignition and steering column lock • Anti-theft trunk lock • Headlamp and wiper circuit breakers with automatic reset • Key-left-in-ignition warning • Nonover-ride door locks (except driver's door) • Side door beams • Dual throttle return springs • Interlocking door latches • Recessed inside door latches • Recessed inside door release handles • Rotary glove box latch • Reinforced windshield header and roof • Glare reduction measures for windshield wipers, instrument panel, and steering wheel • Double ball-joint rearview mirror mount.

## INTERIOR TRIM



**Optional on New Yorker four-door sedan.** Leather-and-vinyl 50/50 individually adjustable seats with adjustable head restraints, dual folding center armrests and reclining seatbacks. Center console contains seat controls and storage bins. Both front seatbacks and seat cushion facings have pockets. Available in Blue, Brown, Charcoal, Red, Tan.



**Standard on New Yorker four-door sedan.** Velvet cloth 50/50 individually adjustable seats with adjustable head restraints, dual folding center armrests and reclining seatbacks. Center console contains seat controls and storage bins. Both front seatbacks and seat cushion facings have pockets. Available in Blue, Brown, Charcoal, Red, Tan.



MOPAR parts are engineered by Chrysler Corporation for use in your Chrysler New Yorker. When replacement is necessary, be sure to specify MOPAR parts. Used by professional mechanics all over the world.



At Chrysler we have one and only one ambition: To be the best!  
What else is there?

That's why we helped convert a smokestack industry into a high tech industry with robotics, lasers and highly advanced computers. And that's why, today, we are building high mileage, front-wheel drive products with outstanding quality. As a result, we have led the American automobile industry with unprecedented warranty coverage. We have proved that "Made in America" means something again.

Chrysler has made major strides in quality which have resulted in a total commitment to stand behind our products. No manufacturer has the right to ask people to buy its products unless it has the confidence to back them. Chrysler has made a unique promise: To back every Chrysler we build for five years or 50,000 miles on engine, drive train and outer body rust-through. Nobody else has made that promise.

Today every man and woman at Chrysler has a commitment—a commitment to build the best cars and trucks in the world. Quality. Hard work. Commitment. This is the stuff America is made of. And this is the stuff Chrysler is made of.

*Lee A. Iacocca*

CHRYSLER CORPORATION. WE DON'T WANT TO BE THE BIGGEST, JUST THE BEST.