



1983 CHRYSLER

---

# NEW YORKER

---

We've Re-Engineered the American Luxury Car

CHRYSLER NEW YORKER.  
"THE PENTASTAR'S HIGHEST STANDARD OF FRONT-WHEEL DRIVE LUXURY.."



The Pentastar has long symbolized Chrysler's automotive engineering excellence. Today it is a symbol that represents advanced technology in developing and building front-wheel drive cars. The all-new Chrysler New Yorker is the apex of this achievement.

This newest Chrysler makes a true claim on the word "classic" with its distinguished good looks. It's immediately obvious as the 1983 New Yorker makes a formal statement with its limousine roofline accented by a standard padded landau roof and distinct coach lamps.

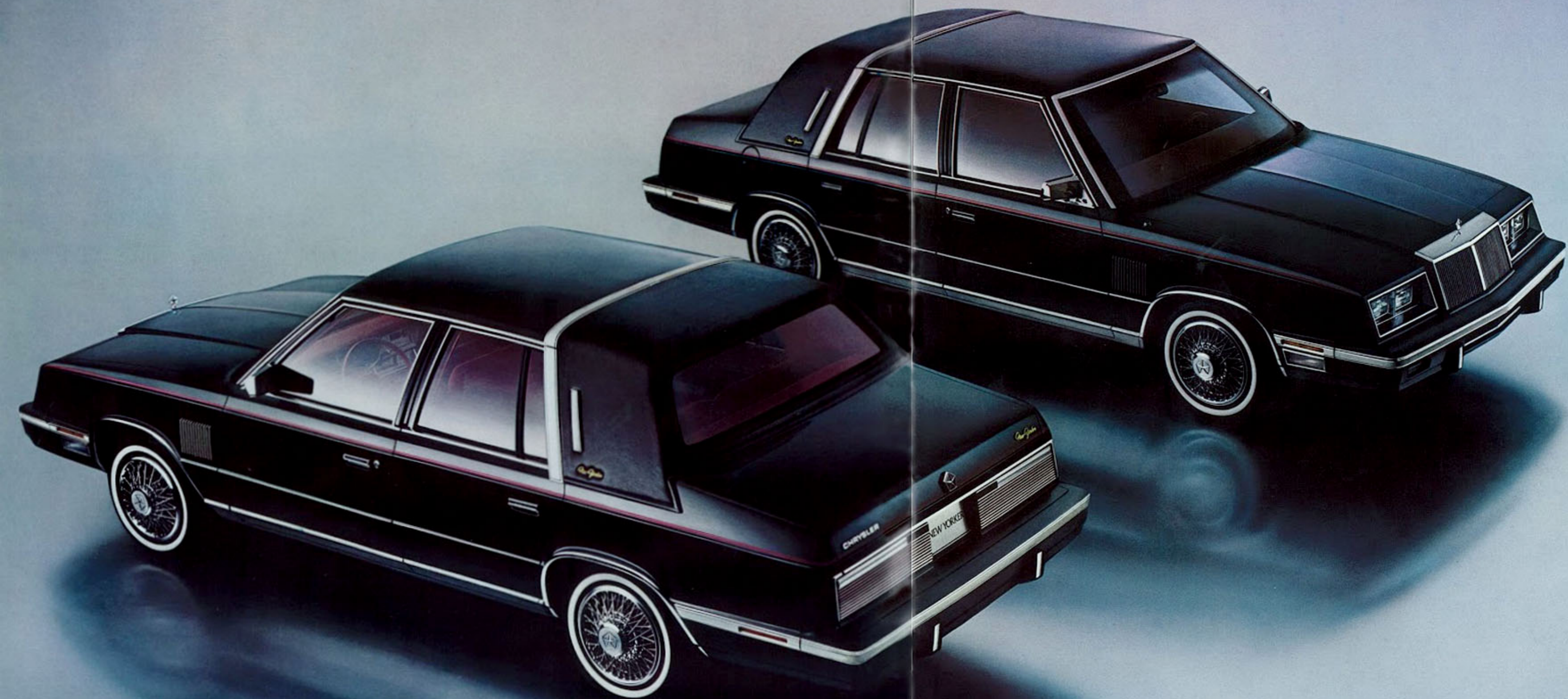
New Yorker's classic styling is combined with true big car roominess and comfort, precision control and stability on the road, responsive power and passing ability, technical innovations in function monitoring, and surprising efficiency.

You must experience the newest, proud bearer of the Pentastar to realize its distinction. Chrysler New Yorker has taken front-wheel drive and luxury to the superb.

Some of the equipment shown or described throughout this catalog is available at extra cost.

ABOUT THIS CATALOG. We have tried to make this catalog as complete as possible, and we hope you find it useful. However, since the time of printing, some of the information you will find here may have been updated. Your dealer has details, and you should ask him for current information before ordering.

"THE ZENITH OF CHRYSLER'S HIGH TECHNOLOGY..."



The Chrysler Pentastar sets the tone for the stylish good looks that symbolize the 1983 New Yorker. Its classic styling is enhanced by a distinctive waterfall grille, front fender louvers, cornering lamps, bright molding around sills, lower doors and wheel openings; 14-inch wire wheel covers, and body-side and deck lid stripes.

Chrysler's combination of front-wheel drive technology and precision control gives New Yorker exceptional stability on its 103-inch wheelbase. Standard "ride control" steel-belted radial tires and a "quiet control" Sound Package complement New Yorker's significant ride features.

New Yorker also maintains Chrysler's reputation for fuel economy. Its standard 2.2-liter engine and three-speed automatic transaxle achieve [24] EPA EST MPG; \* 32 estimated highway. With the Mitsubishi-built optional, more powerful 2.6-liter engine, New Yorker's rating is [22] EPA EST MPG; \* 29 estimated highway.

\*Use EPA EST MPG numbers for comparison. Your mileage may differ depending upon speed, weather, and trip length. Actual highway mileage will probably be lower than highway estimate. California mileage: [24] EPA EST MPG; 32 estimated highway with standard 2.2-liter engine—[20] EPA EST MPG; 27 estimated highway with optional 2.6-liter engine.

"LUXURY AND CONTEMPORARY STYLING..."



The true significance of the Pentastar as a symbol of excellence is obvious when you open the door. New Yorker's luxurious interior, with comfortable seating for five, invites close inspection.

The standard 50/50 deep-nap cloth split bench front seat is built for individual comfort. Each seat has a recliner, convenient storage pocket in seatback, and separate armrest. A console with recliner and power controls plus a convenient storage bin is standard on each seat.

Thick-cut pile carpeting covers the floors, rear shelf, and cowl sides. Door panels feature fashionable woodtone inserts with bright metal trim and lower carpeted insert.

For even more opulence, the optional Mark Cross Package includes plush leather-and-vinyl seating in four color choices plus unique door trim panels with piped inserts, a leather-wrapped luxury steering wheel, and special Mark Cross identification.

"A SPECIAL TOUCH OF ELEGANCE..."



New Yorker's driver controls and convenience features also represent the spirit of Pentastar excellence and are apparent the moment you get behind the wheel. Instruments are laid out for quick reading; controls are at your fingertips. The standard Electronic Travel Computer features a digital display that supplies pertinent trip data at a touch—fuel range, MPG, trip odometer, average speed, date, time, and a U.S./metric unit selector. The standard Electronic Voice Alert System monitors a total of 11 functions and reports on them audibly. It will inform you of such conditions as low fuel or a door ajar. Or it will tell you when "all monitored systems are functioning properly."

A convenient instrument panel console contains ample storage, a tape cassette bin, a coin holder, ash receiver, and a slide-out cup holder. Heater and outlets for the optional air conditioning are positioned to surround you with warm or cool air without hot or cold blasts.

Controls for the standard dual power-operated outside mirrors are on the door armrest, the power rear deck lid release is in the glove box, and the fuel filler door release is on the left side of the instrument panel—all conveniently at hand.

*New Yorker*



"THE PENTASTAR...MORE THAN JUST A SYMBOL"

The Chrysler Pentastar is one of the best recognized symbols in industry today. Symbol of the Corporation and the products it builds, the Pentastar's five points represent the qualities essential to the satisfaction of our customers and form the guiding principles of the Chrysler Corporation.

The original Chrysler Pentastar was based on a 5,000-year-old symbol whose five points were thought to represent beauty, long life, knowledge, health, and prosperity. Today's Chrysler Pentastar borrows from the legendary symbols and applies them on a more practical, achievable level. Its five points stand for engineering excellence—design—constantly improving quality—durability—and a strong and dedicated dealer organization. Displayed prominently on each of our products, the Pentastar serves as a continuing reminder of Chrysler Corporation's commitment to improve its products and to better serve you.

The crystalline Pentastar that adorns the hood of the new 1983 New Yorker is a continuation of that commitment, as well as a special touch of elegance on the flagship of Chrysler's state-of-the-art front-wheel drive fleet.

As the zenith of Chrysler's high technology, front-wheel drive efficiency, luxury and contemporary styling, New Yorker is a true car for the Eighties; an automobile that reflects the changes in American driving needs and desires.

The Pentastar is Chrysler's pledge to the world in general, and to our customers in particular, that Chrysler-built cars are quality-built cars—this is substantiated by the fact that they are the only U.S.-built cars covered by a five-year/50,000-mile limited warranty. More than just a symbol, the Pentastar *does* represent every Chrysler employee's commitment to constantly improved quality and reliability in the products we produce. So the Pentastar is especially appropriate for symbolizing New Yorker's excellence.

As I've said many times, "If you can find a better car, buy it." With the 1983 New Yorker, I feel more confident than ever in making that challenge.



Lee A. Iacocca



**The Pentastar** and Chrysler's 5/50 Limited Warranty. In its dedication to improving the quality of its products, Chrysler Corporation is now offering one of the strongest limited warranties in the domestic auto industry... and one that surpasses those offered by most import car manufacturers.

Contributing to Chrysler's ability to offer a strong limited warranty is the fabrication of the unitized body with the extensive use of galvanized sheet metal panels, one of the best known methods of corrosion protection, and the use of pre-coated steel along with a seven-step dip-and-spray process.

Chrysler feels so confident about New Yorker's quality that upon expiration of the normal 12-month/12,000-mile new vehicle limited warranty, limited warranty coverage is extended on power train components, including engine, transaxle, and axle—plus outer panel rust-through protection—to five years/50,000 miles, whichever comes first. A deductible does apply, and you should see your dealer for details.

"QUALITY AND LUXURY ENGINEERED IN ..."

**Front-wheel drive.** Engine and transaxle drive front wheels through two short drive shafts. This permits reduction of floor tunnel in the body for greater interior roominess.

**Electronic feedback carburetor.** Oxygen sensor monitors combustion gases to maintain ideal carburetor fuel-air mixture for best combustion efficiency.

**Special sound insulation.** New Yorker comfort is especially quiet because of features such as the special Sound Insulation Package which helps shut out road noise.

**Power-assisted rack-and-pinion steering.** Provides positive responsive steering with low turning effort, good return-ability, and excellent directional stability.

**Bumper system.** Integrated into New Yorker's classic styling.

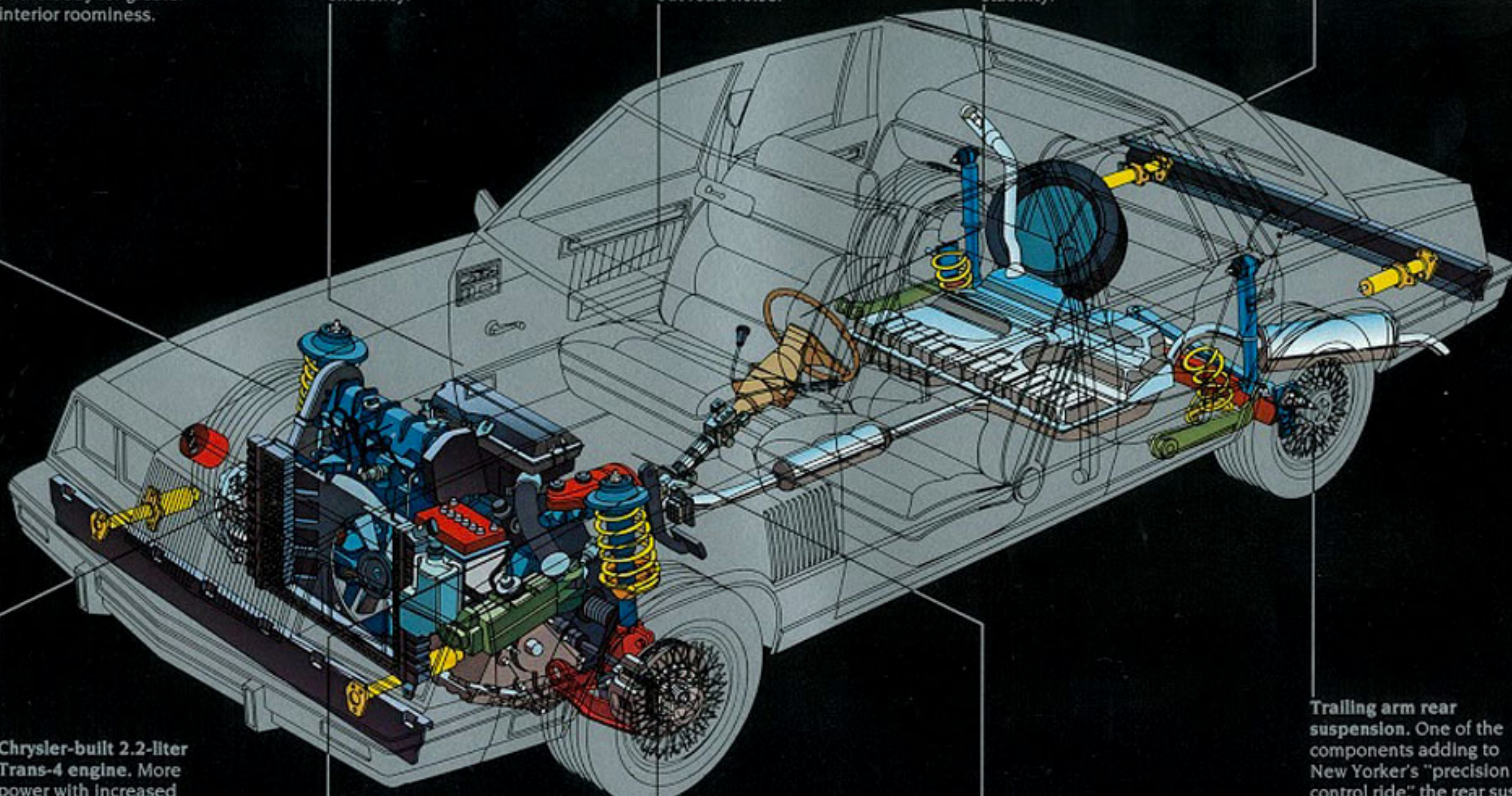
**Chrysler-built 2.2-liter Trans-4 engine.** More power with increased horsepower and higher torque. The intake manifold and intake and exhaust valves have been redesigned for high-performance and efficiency.

**Iso-Strut front suspension.** Independent coil spring and strut suspension with integral linkless antisway bar. Completely rubber-isolated from New Yorker's body.

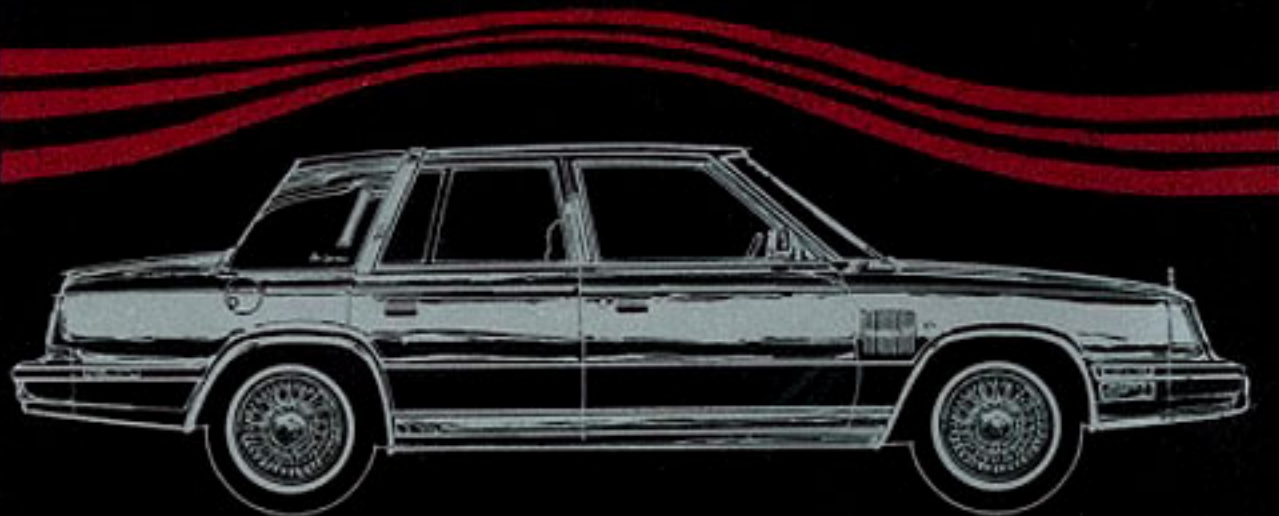
**Power brakes.** Front disc brakes have large rotor and caliper assemblies. Rear drum brakes are self-adjusting. Stops are safe and sure.

**Chrysler-built TorqueFlite automatic transaxle.** Features wide-ratio gears, with high-ratio first and second gears for good acceleration without loss of fuel economy.

**Trailing arm rear suspension.** One of the components adding to New Yorker's "precision control ride," the rear suspension features beam axle with trailing arm suspension including coil springs, adjacent shock absorbers, track bar, and torsion-tube anti-roll control.



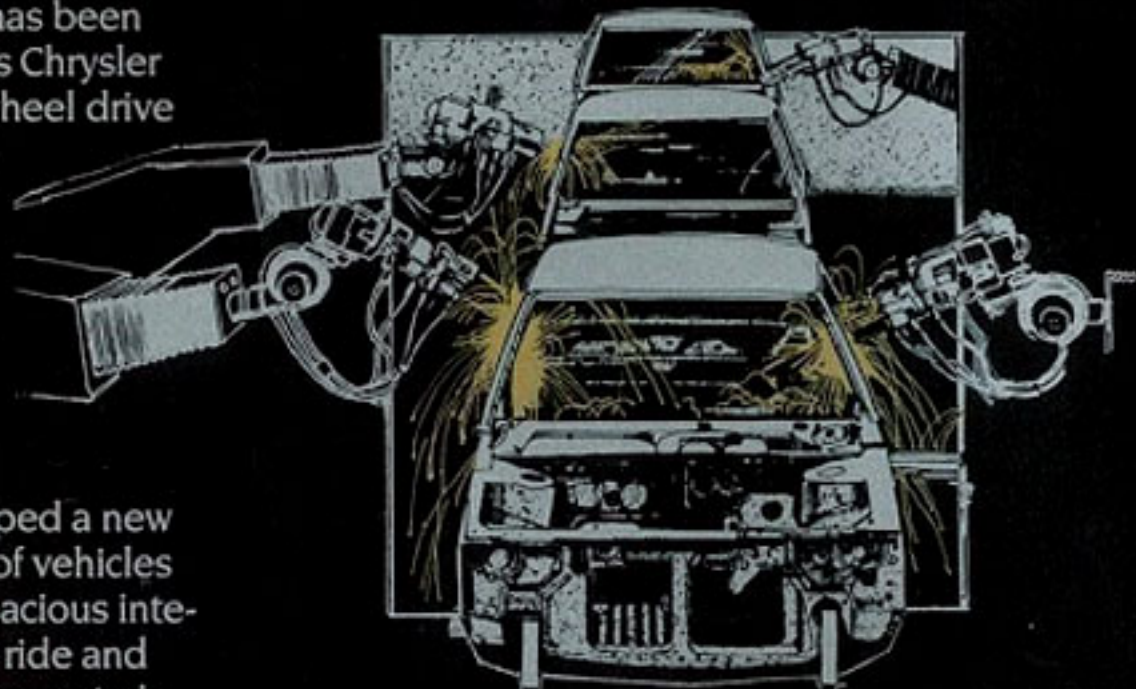




One of the points on the Chrysler Pentastar represents engineering, and Chrysler has had a long-standing reputation of sound engineering. That reputation has been enhanced as Chrysler took front-wheel drive technology, refined and honed it to meet American driving demands, and developed a new generation of vehicles that offer spacious interiors, stable ride and maximum power train efficiency.

Extensive use of computer technology enables Chrysler engineers to do more development work in less time—condensing the gestation period for new products. Computer-

Aided Manufacturing includes computer-controlled robot welders that perform over 80 percent of the welds on every New Yorker.



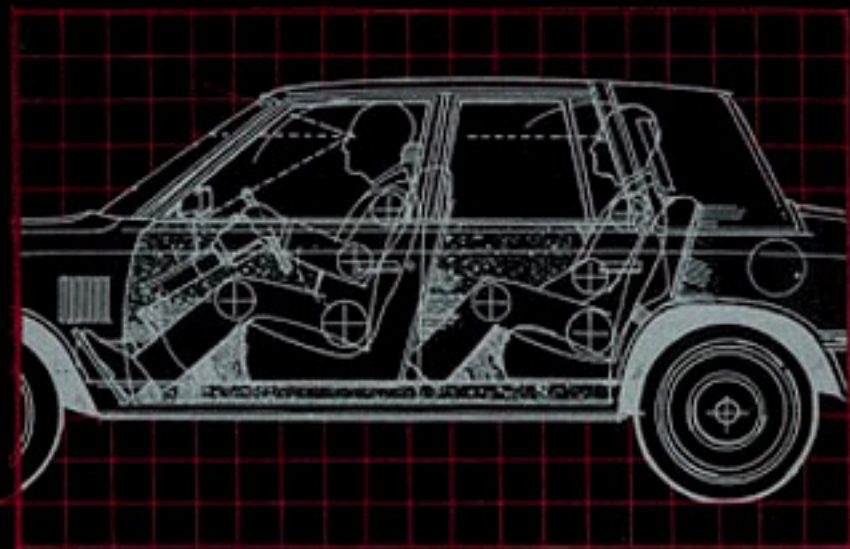
Engineering expertise has led to development of new power trains—new engines, new transaxles. It also has developed new suspension systems with components that interact to give you precise con-

trol and a stable, comfortable ride.

Among the proudest achievements is the Chrysler-designed-and-built 2.2-liter Trans-4 engine. It incorporates very high-tech features including an electronic combustion computer that makes hundreds of calculations in split seconds to monitor the exact fuel/air mixture for optimum engine performance.

Chrysler also designs and builds cars to be roomy,

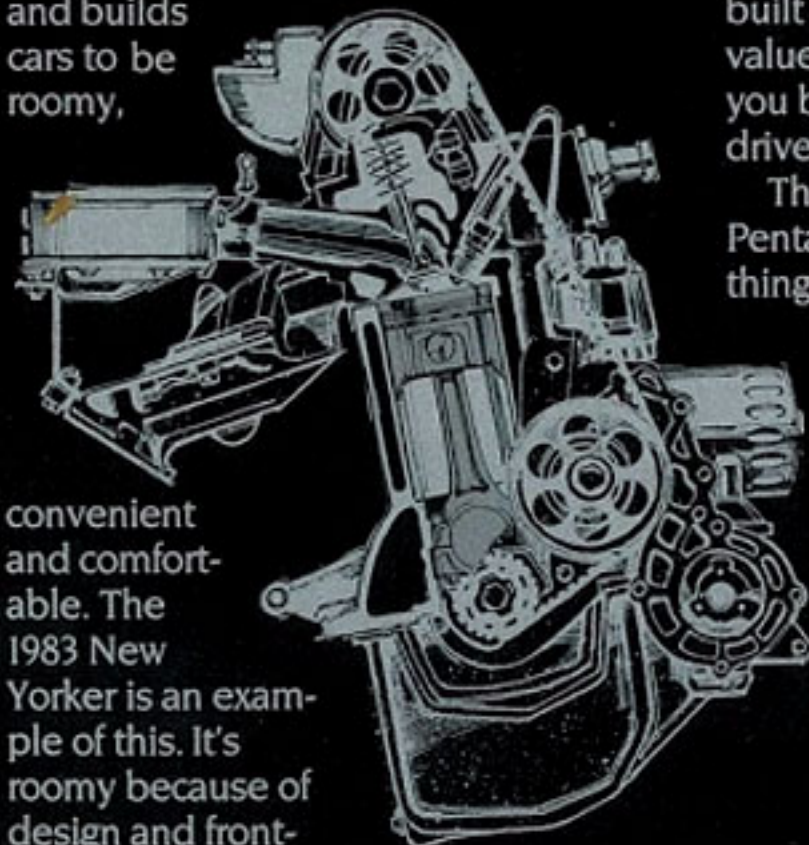
convenient and comfortable. The 1983 New Yorker is an example of this. It's roomy because of design and front-



wheel drive technology. It's comfortable and elegant because that's what a New Yorker is supposed to be.

The attributes cited above and all the other things we do in the design and building of cars add up to a Chrysler-built car that means true value to you. Value when you buy it. Value as you drive it.

That's why the Pentastar means something to Chrysler. That's why it will mean something to you.



FIT NEW YORKER STYLE INTO YOUR LIFE  
WITH SELECTED OPTIONS.



1. Maximize the inherent luxury of a 1983 New Yorker with the optional Mark Cross Package featuring plush leather-and-vinyl seating, leather-wrapped steering wheel, and special door trim. The front seat is a 50/50 bench with individual reclining controls, and a Mark Cross logo on the seatbacks.

2. Electronically Tuned AM/FM Stereo Radio with Cassette Player. Precise solid state tuning eliminates fade, drift. Fluorescent digital display and a memory system. Available with or without cassette tape player with Dolby\* sound.

3. Air Conditioning. Includes bi-level ventilation features to improve the flow of cool, clean air for more even temperature and reduced cold drafts. (See Engine Cooling.)

4. Vanity Mirror. This convenient passenger-side visor vanity mirror is lighted.

5. Power Windows and Door Locks. Control windows and door locks from the driver's seat. Individual window controls are on each door panel.

**More Options**

- Battery—500-amp maintenance-free; heavy-duty
- Defroster—Rear window: electrically heated (required at extra cost in New York state)
- Emissions Controls—California (required at extra cost on all vehicles registered in California)
- Emissions Controls—High-altitude (2.2-liter engine only)
- Engine—2.6-liter Mitsubishi-built
- Engine Cooling—Recommended for vehicles to be equipped with field-installed air conditioning (see dealer for details)
- Mats—Floor, front and rear: color-keyed
- Power Seats—Left and right

**OPTIONAL EQUIPMENT**

Certain models, packages and options are subject to specific restrictions, requirements and late availability. Consult your dealer for current ordering information.

The 1983 New Yorker is one of the most complete cars on the market, incorporating as standard equipment many features found as options on other cars. However, you can specifically equip a New Yorker by specifying your choice of a number of options. Some of the more popular ones are shown and listed here.

\*Dolby is a trademark of Dolby Laboratories.



## ENGINES AND TRANSAXLES

Type	Displacement	Bore & Stroke	Compression Ratio	Horsepower		Torque	Transaxle Availability
				SAE Net @ RPM			
Federal/California	2.2-liter 1135 CID1	3.44 x 3.62	9.0:1	94 hp @ 5,200	117 lb-ft @ 3,200	S-Automatic (2.78 OTGR)†	
Federal/California	2.6-liter* 1156 CID1	3.59 x 3.86	8.2:1	93 hp @ 4,500	132 lb-ft @ 2,500	S-Automatic (3.02 OTGR)†	

\* Built by Mitsubishi Motors Corporation.

† OTGR: overall top gear ratio.

## STANDARD FEATURES

- Alternator—60-ampere
- Armrests—Door
- Ash Receivers
- Battery—370-ampere; maintenance-free
- Battery Test Indicator
- Brakes—Power, dual diagonal; disc front; drum rear
- Bumper Guards—Front and rear
- Bumper Rub Strips—Bright
- Bumpers—Energy absorbing
- Carburetor—Electronic feedback
- Carpeting—Passenger compartment
- Cigarette Lighter
- Cleaner Air System
- Clock—Electronic digital
- Coat Hooks
- Coating—Lower body protection; urethane
- Computer—Combustion: electronic
- Console—With ash receiver, storage/cassette bin, cup and coin holder
- Control Symbols—International (ISO)
- Coolant Overflow Reservoir
- Corrosion Protection—Extensive use of galvanized steel
- Deck Lid Power Release
- Directional Signals—With lane-change feature
- Door Release Handle—Interior: easy-open with integral rocker type lock/unlock system
- Electronic Ignition and Voltage Regulator
- Electronic Travel Computer Cluster—Includes digital display of fuel range, MPG, trip odometer, average speed, date, time, and a U.S./metric unit selector
- Electronic Voice Alert System—Audibly announces: key in ignition, headlamps on, fasten seat belts, door ajar, low washer fluid, parking brake on, low fuel, low engine oil pressure, engine overheating, electrical system malfunction, all monitored systems functioning
- Engine—Four-cylinder 2.2-liter Trans-4
- Engine Cooling Fan—Electric
- Fender Louvers
- Flash-to-Pass Headlamps
- Flashers—Hazard warning
- Fuel Filler Cap—Tethered
- Fuel Filler Door—With key lock and power release
- Fuel Tank—13-gallon

- Glass—Tinted: all windows
- Headlamps—Halogen high and low beam; rectangular
- Headliner—Cloth-covered; color-keyed
- Heater and Defroster
- Hood—Counterbalanced
- Hood—Insulation pad
- Hood Ornament—Crystalline Pentastar
- Hood Release—Inside
- Horns—Dual
- Instrument Panel—Brushed finish cluster with two-tone treatment
- Instrument Panel—Padded
- Insulation—Body sound: special
- Lamps—Cornering
- Lights—Ash receiver, dome/reading, glove box, ignition switch (with time delay); parking brake warning, side marker with reflectors; trunk, underhood
- Lock—Glove box
- Mirrors—Inside, rearview day/night
- Mirrors—Outside, dual power adjustable; chrome
- Moldings—Backlight, windshield, belt, upper door frames, quarter windows, sill, wheel opening, drip rail, lower deck lid; bright
- Radio—AM (may be deleted for credit on factory orders)
- Roof—Landau: fully padded vinyl
- Stripes—Body-side: tape
- Suspension—Front: Iso-Strut with coil springs around the shock absorbers, linkless sway bar; rear: flex arm beam axle with trailing link coil springs and premium shock absorbers
- Taillamps—Full-width
- Tire—Spare: compact, high pressure
- Tires—P185/75R14 steel-belted radial white sidewall
- Transaxle—Three-speed automatic
- Trunk Dressup Package
- Ventilation System—Upper level: forced, four outlets
- Wheel Covers—Wire
- Windshield Wipers and Washers—Deluxe intermittent; electric
- Wiper System—Concealed

## STANDARD SAFETY FEATURES

- Safety-Rim wheels
- Combination lap-shoulder belts for the driver and right front passenger, and lap belts for all other passengers

- Seat belt reminder system
- Energy-absorbing steering wheel
- Dual braking system with separate brake fluid reservoirs in the master cylinder
- Brake fluid pressure loss warning light (also serves as indicator when parking brake is applied)
- Hazard warning flasher system
- Turn signals with lane-change feature
- Electronic Ignition
- Backup lights
- Energy-absorbing front seatbacks
- Inside and outside rearview mirrors
- Side marker lights and reflectors
- Seatback latches on folding seats
- Fade-resistant front disc brakes
- Electric windshield washers and wipers
- Ignition and steering column lock

- Anti-theft trunk lock
- Headlamp and wiper circuit breakers with automatic reset
- Key-left-in-ignition warning
- Non-override door locks (except driver's door)
- Resilient window crank knobs
- Side door beams
- Dual throttle return springs
- Interlocking door latches
- Recessed inside locking door latches
- Recessed inside door release handles
- Rotary glove box latch
- Reinforced windshield header and roof
- Glare reduction measures for windshield wipers, instrument panel, and steering wheel
- Double ball-joint rearview mirror mount

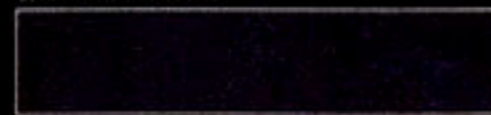
## Dimensions, Weight and Capacity

Length:	185.7"	Curb Weight:	2,583 lbs
Width:	68.0"	Tread (front/rear):	57.6"/57.0"
Height:	53.3"	Cargo Capacity (est):	17.0 cu ft
Wheelbase:	103.3"	Passenger Capacity:	5
Turning Diameter:	35'6"	Fuel Capacity:	13 gal

## EXTERIOR COLORS



Charcoal Metallic



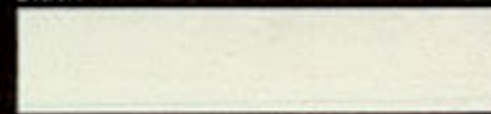
Nightwatch Blue



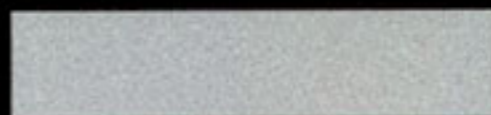
Glacier Blue Crystal Coat



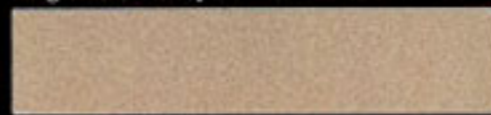
Black



Pearl White



Bright Silver Crystal Coat



Beige Crystal Coat



Crimson Red



Sable Brown

## OPTIONAL 5/50 PROTECTION PLAN COVERAGE

Chrysler Corporation offers a 5/50 "Added Coverage" Service Contract for your new Chrysler New Yorker which provides protection against rising service and parts costs for specified major repairs not included in the 5/50 limited warranty. Coverage starts on the specified components in the plan after your vehicle's "basic" 12-month/12,000-mile limited warranty expires on these components and continues for five years or 50,000 miles (whichever occurs first) from the vehicle's original warranty start date. A deductible applies. The plan provides an allowance for alternate transportation and towing.

Ask your dealer for details.

## BUY OR LEASE A CHRYSLER NEW YORKER

In these days of tight money and high interest rates more consumers are considering leasing as an alternative to buying. Leasing a new Chrysler New Yorker usually eliminates large down payments and often results in lower monthly payments because you're paying only for that portion of the car life under the leasing agreement.

Leasing could be right for you, and the more you learn about it the more likely you are to consider it seriously. If leasing sounds like a sensible solution to your transportation needs, talk it over with us—your leasing professionals.

All product illustrations and specifications are based on authorized information. Although descriptions are believed correct at publication approval, accuracy cannot be guaranteed. Chrysler Corporation reserves the right to make changes from time to time, without notice or obligation, in prices, specifications, colors and materials, and to change or discontinue models. See your dealer for the latest information.

Note: Due to occasional printing irregularities, the colors shown may vary slightly from actual hues. See your Chrysler dealer for accurate color chips.

MOPAR parts are engineered by Chrysler Corporation for use in your Chrysler New Yorker. When replacement is necessary, be sure to specify MOPAR parts. Used by professional mechanics all over the world.

Litho in U.S.A. Form No. 81-005-3020

12/82 (175M)



The New Chrysler Corporation. Quality engineered to be the best.