

1976 Dodge Tradesman Vans.

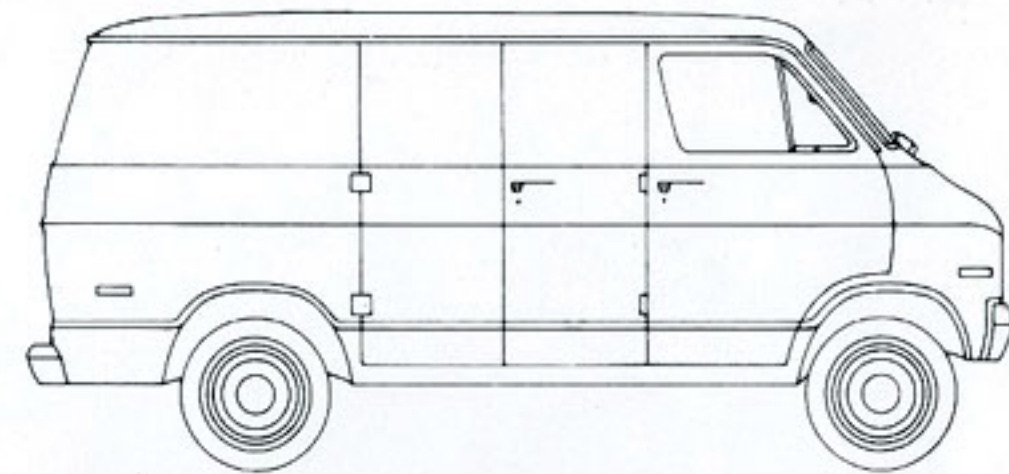
The van that's worked its
way to the top.



Compact 109"WB Tradesman vans, in 3 models.

For tight turns and tighter budgets.

The extra value you get with a Tradesman begins with choice. A big selection of models and capacities, starting with a lineup of three 109-inch-wheelbase haulers that can add efficiency to your deliveries, while subtracting from your costs. True compact trucks with maneuverability that gets more done in a day, stemming from less than 15 feet of overall length, bumper to bumper, and a short 36.5-foot turning diameter. And with no sacrifice in carrying capacity: payloads up to 3,895 pounds in B300 models. When it comes to dollar-saving power, these vans are as tight as their turning diameter. Choose from Six or V8 engines that are the right size for operating economy and electronically tested for efficiency. Throughout, Tradesman is designed to provide truck value aimed at low-cost hauling. Shown below: B100 Tradesman on a 109-inch wheelbase, with new Custom Exterior Trim package; available for all models.



MODEL	WHEEL-BASE (in.)	OVERALL LENGTH (in.)	PAYLOAD ALLOWANCE (lb.)	
			MIN*	MAX*
B100	109	176	1,140	1,325
B200	109	176	2,005	2,540
B300	109	176	2,640	3,895

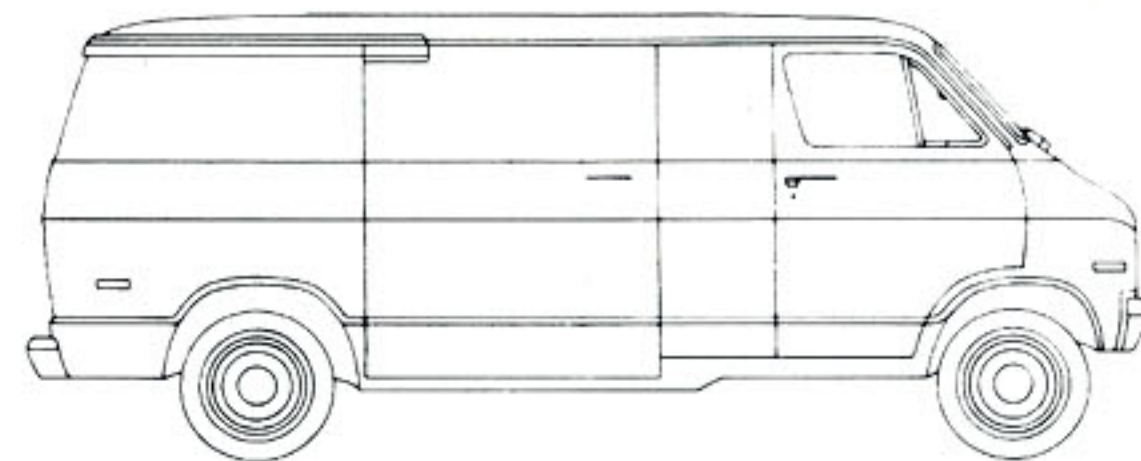
*Includes driver and all passengers.



Rugged 127"WB Tradesman vans, in 3 models.

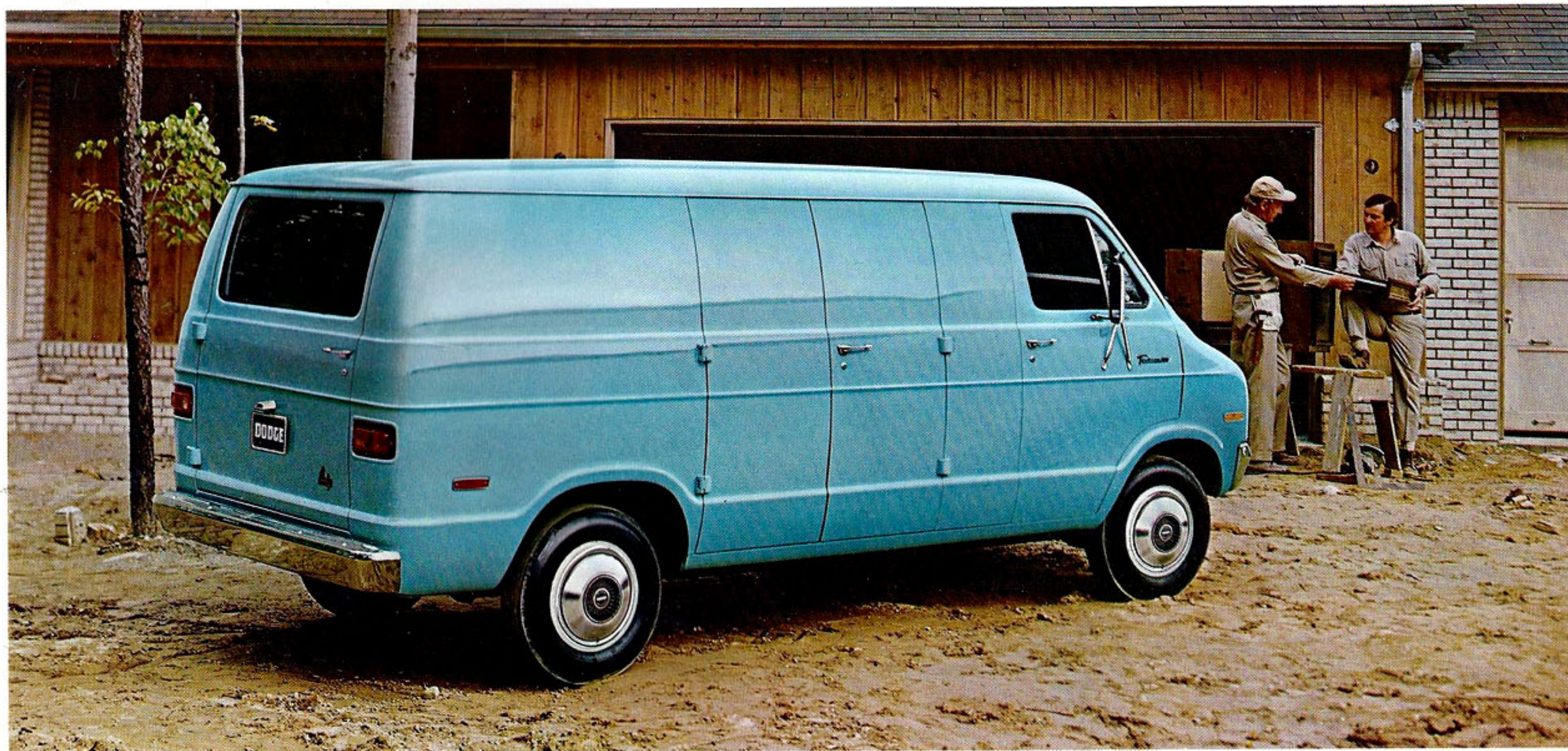
They got tough about truck costs.

Today, the name of the truck game is productivity. More profit-producing work per day, to offset operating costs. More worth for the price. To help assure it, the big Dodge choice in vans includes three 127-inch-wheelbase models with big-payload carrying capacities ranging from 1,010 pounds to 4,240 pounds. Each with a full measure of Dodge stay-on-the-job dependability. From engineering advancements such as electronic testing of engines and engine parts, Electronic Ignition System that eliminates points and condenser, and adjustment-free transistorized voltage regulator. Plus the proved saving ability of a standard 6-cylinder engine that knows how to nurse a gallon. As a special option on 127-inch-wheelbase models, a sliding side door eases cargo handling in tight places. An exclusive full-width rear door is available also. If you're looking for all the van value you can get, on today's terms, look no further. Shown below: B200 Tradesman on a 127-inch wheelbase, with optional full-width rear door.



MODEL	WHEEL-BASE (in.)	OVERALL LENGTH (in.)	PAYLOAD ALLOWANCE (lb.)	
			MIN*	MAX*
B100	127	194	1,010	1,195
B200	127	194	1,875	2,410
B300	127	194	2,510	4,240

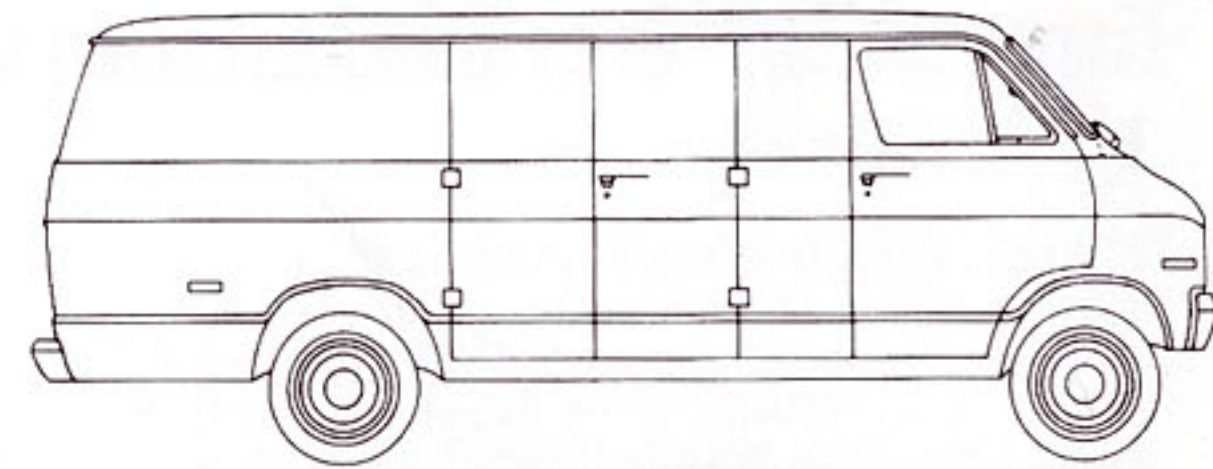
*Includes driver and all passengers.



Long Tradesman Maxivan, in 2 models.

As big on saving as it is in size.

With 18 extra inches of overall length on a 127-inch wheelbase, the Dodge Maxivan is the biggest van on the road. Available in both B200 and B300 versions, for carrying payloads as big as 4,125 pounds. Long loads, up to almost 13 feet; or even longer, if a passenger seat is not required. And Maxivan cuts expense while it adds to space. Fuel savings stem from a standard 225-cubic-inch Six that's known for its economy. Maintenance costs are minimized, for a number of good reasons: for instance, Electronic Ignition and solid-state voltage regulator. Front wheels that can be aligned economically, on car wheel-alignment equipment. Tires that are sized to cost less to replace. And there are others, as well. Solid evidence throughout that America's biggest compact van is a big compact van value. Shown below: B200 Tradesman Maxivan on 127-inch wheelbase, with hinged side doors.



MODEL	WHEEL-BASE (in.)	OVERALL LENGTH (in.)	PAYLOAD ALLOWANCE (lb.)	
			MIN*	MAX*
B200 Maxivan	127	212	2,225	2,225
B300 Maxivan	127	212	2,380	4,125

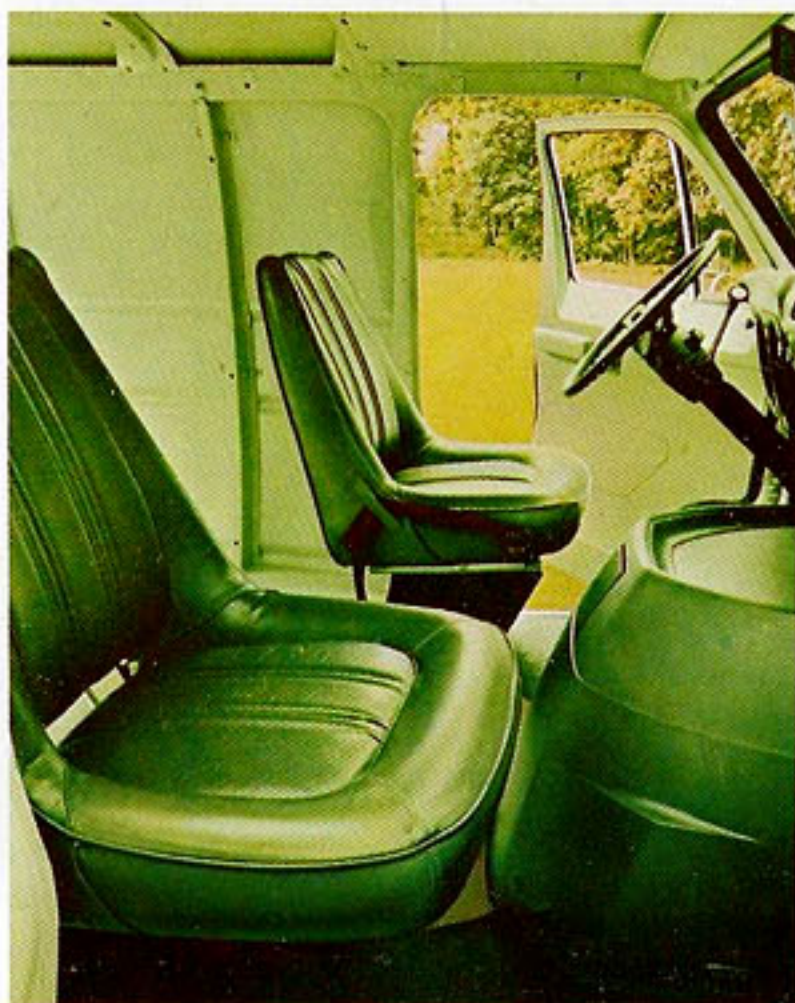
*Includes driver and all passengers.



Tradesman interiors.

Designed for an easier day's work up front.

In a Tradesman, long hours at the wheel are less of a chore. Seats are contoured for comfort, a full 20 inches wide, with all-vinyl foam construction for even more comfort. Square corners support your legs better. You get a car-style instrument panel and steering wheel for easy car-style driving. Controls are located in the right places to be seen, and used, conveniently. Heater switches are in the middle. With the heater itself inside the engine compartment, where it doesn't cut down on footroom or bug you with noise. To further reduce interior noise, a sturdy fiber-glass cover tops the engine compartment. It can be removed easily for engine maintenance. And the Tradesman driver's compartment looks as good as it feels and works. With the instrument panel and engine cover color-keyed to match the seats. Choose from a selection of options: air conditioning, AM/FM radio, and more.



Deluxe Vinyl Bucket Driver and Passenger Seats (optional)

Custom package includes: deluxe driver's seat, padded instrument panel with wood-grain, bright instrument cluster, color-keyed carpeting, vinyl door panels and horn bar with wood-grain inserts, cigar lighter. Colors: black, blue, green, parchment.



Cloth-and-Vinyl High-Back Bucket Driver and Passenger Seats (optional)

For an added note of luxury to ease long working days. Handsome Boca Raton cloth and durable vinyl upholstery. Seats which have inboard fold-down armrests. In a choice of colors: blue, green and parchment.

And for a bigger day's work in the back.

There's a lot of room in Tradesman's load compartment. The Maxivan 127-inch-wheelbase models provide a whopping 288.3 cubic feet of cargo space. Other 127-inch-wheelbase models offer 249 cubic feet of space for loads. Even the smaller 109-inch-wheelbase models are big inside, with 208 cubic feet. Door openings are high and wide to make loading or unloading easy. For even more cargo-handling convenience, order an optional easy-opening full-width rear door, with big window; or a sliding side door (127-inch-wheelbase models). Tradesman's cargo area is designed throughout for more profit-producing work per day. With the engine located well forward to afford more room for long loads. A grooved floor, for sliding items in or out with ease. Wheel wells that are flat on top, so you can stow cargo better. Even an overhead lamp for night work.



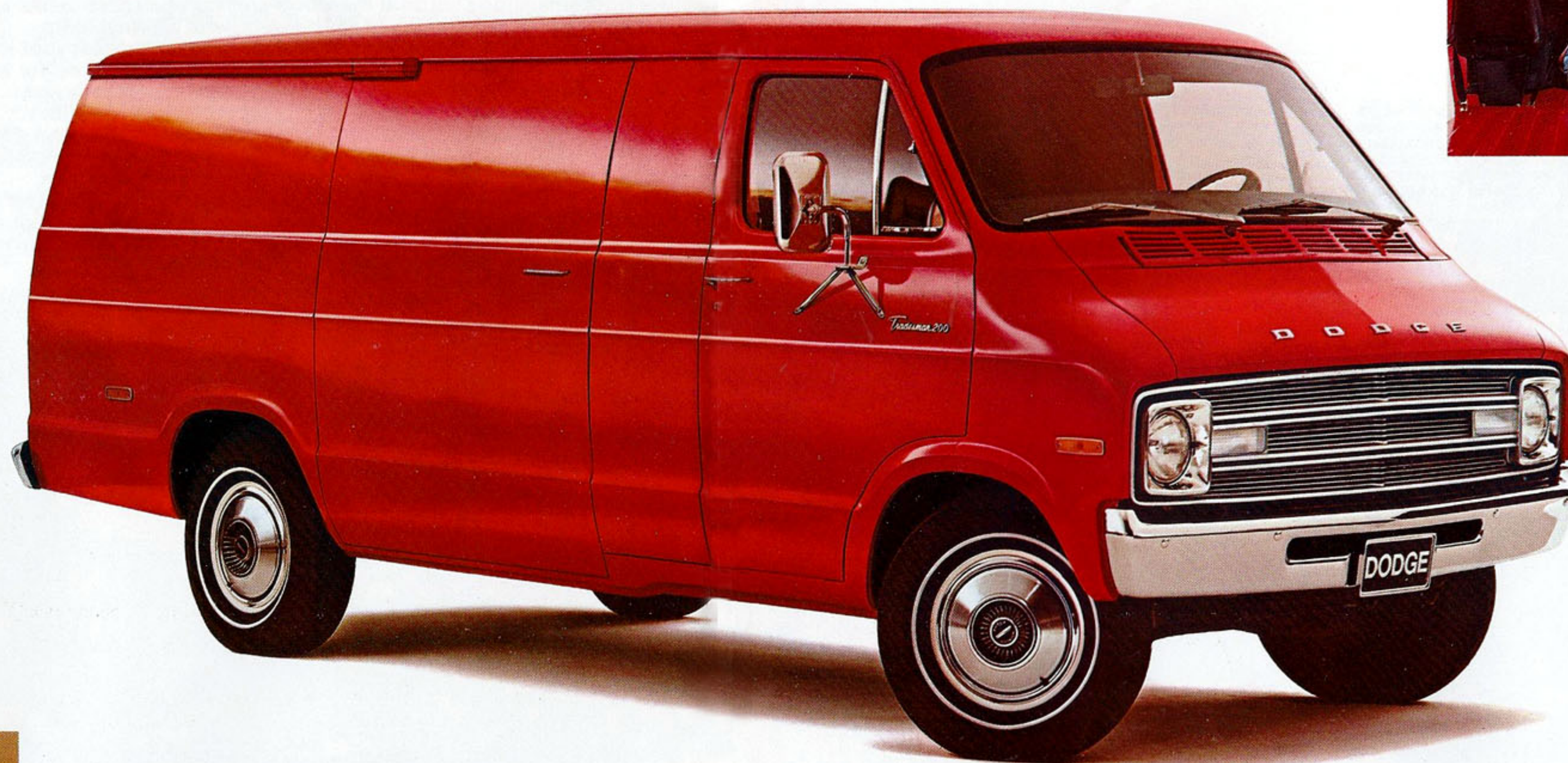
Here are some of Tradesman van's extra-value features.

Here's all-over evidence of Tradesman extra value that leads to low costs; productive, profitable hauling, day in and day out. A lot of it is obvious, even when you observe the truck casually. But there's "hidden" value, also, that you can only experience in unmatched van performance.

Such as economical engine performance, designed for sure starts and less frequent tune-ups; the result of Dodge's proven Electronic Ignition. Standard tires that are sized to save you money at tire replacement time. An optional in-cab hood release that protects your engine against prowlers. Windshield washers mounted on the wipers. Optional automatic speed control for constant-speed driving that saves both gas and driving effort.

The model at right is the big B200 Maxivan, on a 127-inch wheelbase, with optional sliding side door for convenient loading in tight places.

You get a big selection of colors in '76, including five new ones. See Exterior Colors, page 10.



Sturdy fiber-glass engine cover protects you from noise and heat, and lifts off easily for engine maintenance.



Easy engine access allows for faster repair and maintenance, less downtime. Dipstick, battery, and radiator are right up front.

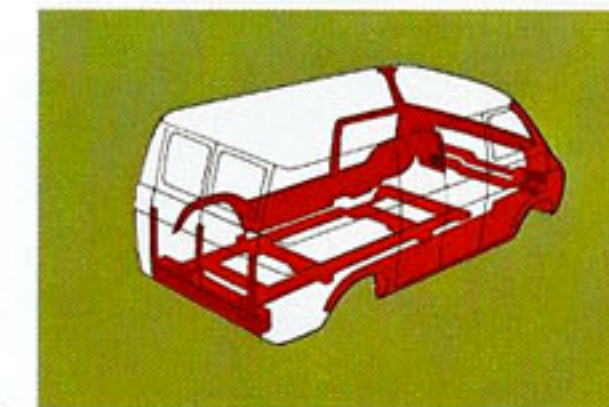
Fade-resistant power front disc brakes (optional on B100) and drum-type rear brakes. So Tradesman can stop as smoothly as it goes.



Two-stage front door check holds the door open halfway or all the way, for your convenience.



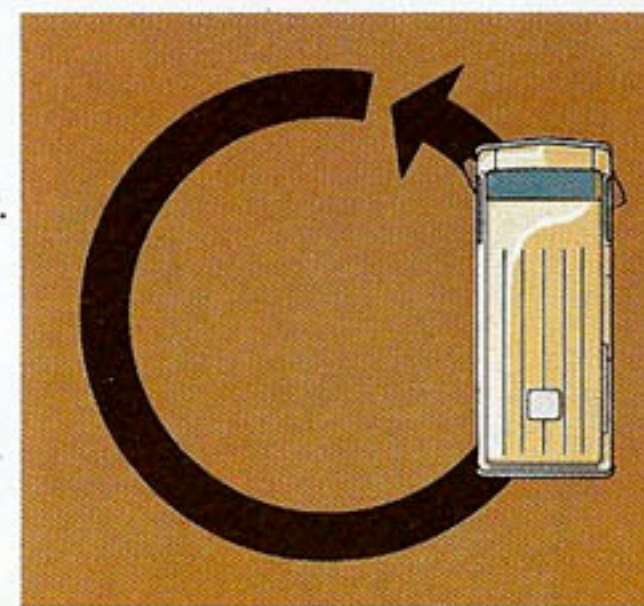
Rust protection from a heavy galvanized coating on parts most exposed to moisture and road salt.



Independent front suspension that's designed to beat the bumps and cut maintenance. Because wheels can be aligned more easily on car alignment equipment.



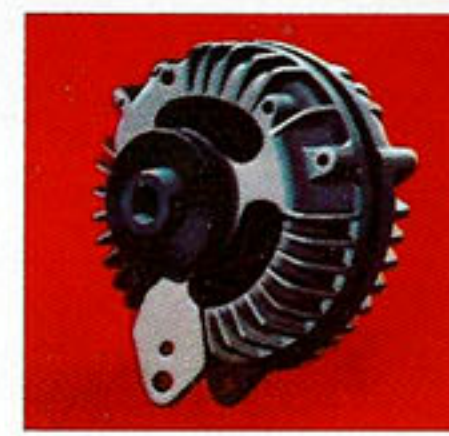
Short turning diameter for nimble maneuvering that gets more work done in a day.



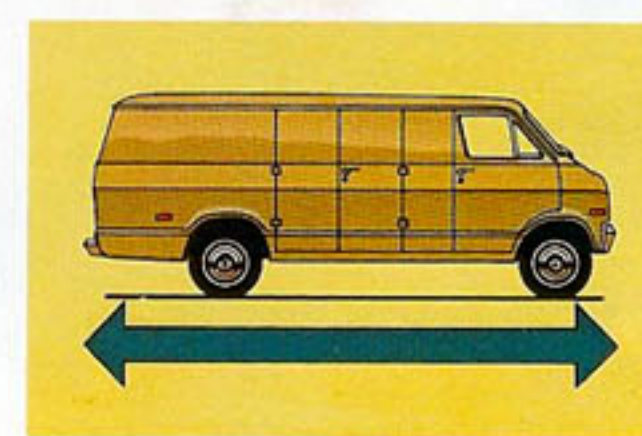
Big standard fuel tank. Holds 22 gallons, in a truck that goes a long way on a gallon. Even bigger 36-gallon tank, optional.



Heavy-duty alternator option, either 52- or 63-amp, for all models.



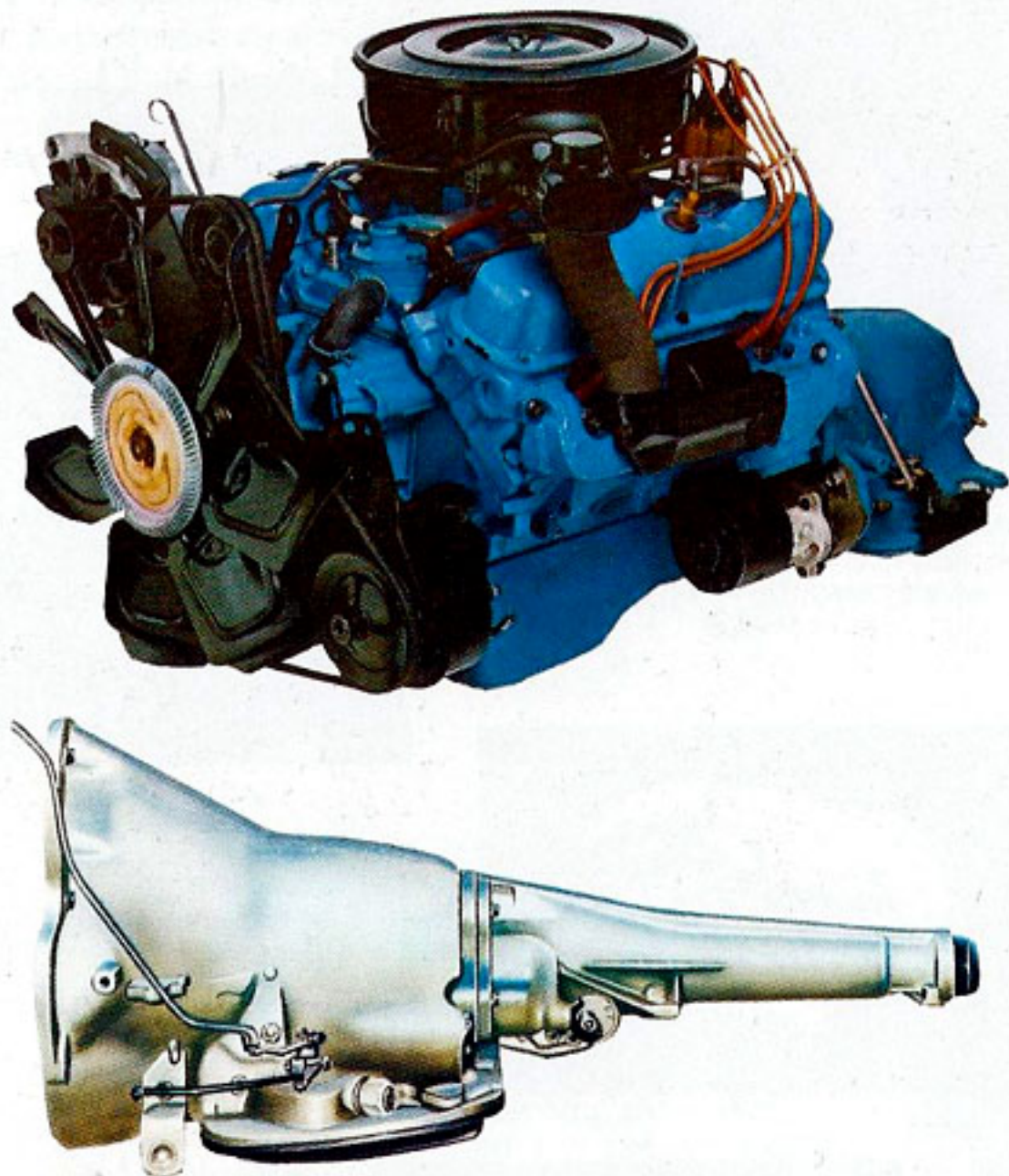
Biggest van in the business, Maxivan, with an extra 18 inches of over-all length. So you can handle the big stuff.



Engines and transmissions.

Engine availability.

Standard engines for Tradesman vans are matched to the wheelbase and GVW for efficient, economical performance. Two proven gas savers—the 225-cubic-inch Slant Six and the 318-cubic-inch V8—are standard on all models. A more powerful 360-cubic-inch V8 is optional ... as well as a 440-cubic-inch V8 for 127-inch-wheelbase B200 models with 6,100-pound GVW and all 127-inch-wheelbase B300 models. You get power that's tailored to your hauling needs.



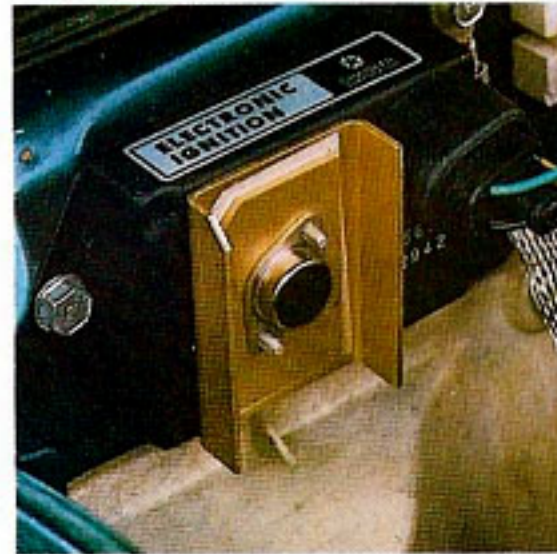
Transmissions.

A rugged three-speed manual transmission is standard on all Tradesman vans. The ease of no-shift driving is available with optional LoadFlite automatic. It also provides a new fluid level sensor on the dash panel that lights up when fluid is needed.

Tradesman van selected standard

Electronic Ignition System.

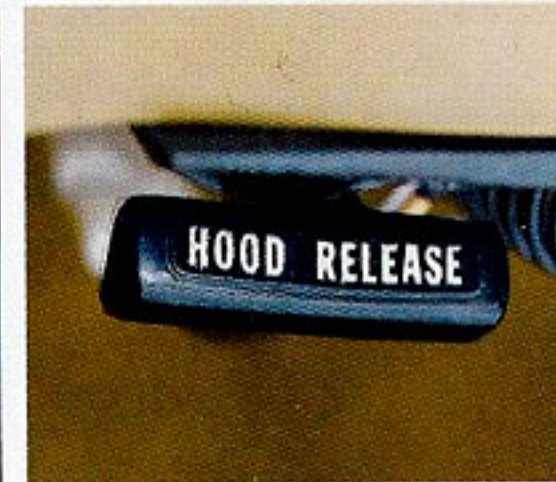
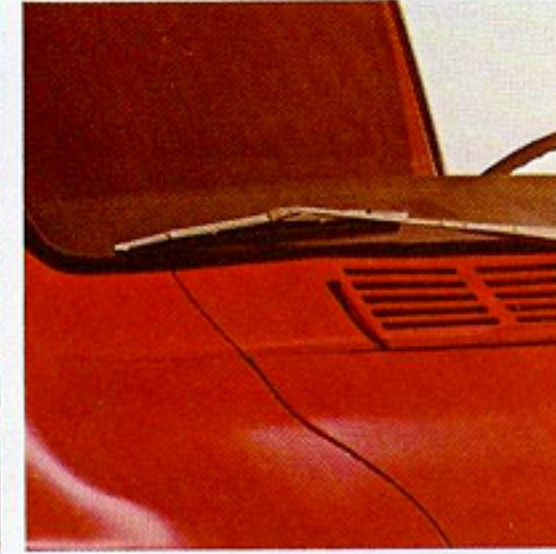
For dependable, economical performance. Helps assure quick starting. Eliminates points and condenser; adds to plug life for less engine maintenance.



Sure stopping power with fade-resistant power front disc brakes standard on B200 and B300; optional on B100. And drum-type rear brakes.

Air intake vents.

Air vents are located at a high level, above the attractively styled grille, to provide a constant supply of cool, clean air to the driver compartment.



In-cab hood release. Protects your engine from tampering wherever you are. Optional.

Easy-to-see gauges...

such as alternator and temperature ... add to driving convenience.



Optional antispin differential. Gets you out of trouble in ice or snow. If one wheel starts spinning, the power is automatically transferred to the other wheel.

Optional equipment not shown:

- Heavy-duty battery
- Vacuum booster brake (B100 only)
- Bright front and rear bumpers
- Cigarette lighter
- 360 and 440 V8 engines
- Tinted glass
- Glove box door and light
- Dual electric horns
- Outside mouldings
- Automatic speed control
- Convenience package
- Insulation package
- Trailer-towing packages
- Deluxe bucket seats
- Heavy-duty shock absorbers
- Heavy-duty front and rear springs
- Inside hood release
- Padded instrument panel
- High-amp alternator
- High-back bucket seats
- Road wheels, chrome-styled

and optional equipment.

Instrument panel.

Designed for both maximum driver convenience and smart, modern appearance. Controls are located for easy, safe viewing and use, and include optional air conditioning for real working comfort in hot weather and an AM/FM radio option for your pleasure. The instrument panel is color-keyed to match the seats.

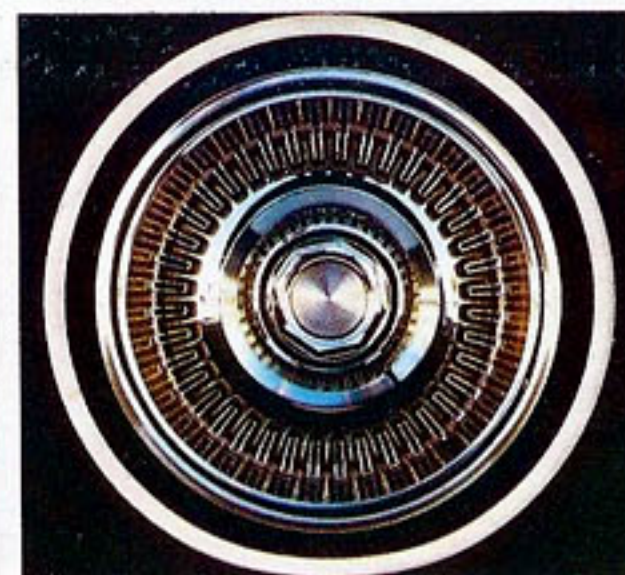


Premium wheel covers(opt.).

A handsome option available for B100 and B200 models, to make Tradesman's prestige-building style even more stylish (a).

Optional bright-finish wheel covers.

They give a custom, passenger-car appearance to the Tradesman's wheels (b).



A Dodge exclusive: single rear door. An optional full-width rear door which can be opened with one hand. You get good visibility through the big window. One-position door check holds the door fully open.



Optional side windows. Available for added side visibility, when desired.



LoadFlite automatic transmission. For convenient no-shift driving (optional).



Optional auxiliary rear heater. It makes working in the load compartment much more comfortable in cold weather.



Automatic speed control. Optional with V8 engines. Enables you to cruise at a constant speed on longer runs. To save on gas; and to help save the driver's energy, as well.

Exterior colors



Bright Blue Metallic



Light Blue



Dark Green Metallic



Light Green Metallic



Medium Gold Metallic



Light Gold



Bright Green Metallic



Yellow



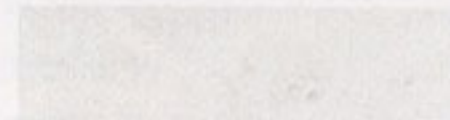
Bright Tan Metallic



Russet



Bright Red



White



Sunstone*



Silver Cloud Metallic

Tradesman Van Standard Equipment

- Air cleaner—dry-type
- Alternator—48-amp
- Antifreeze
- Armrests—driver and front passenger
- Ashtray—driver's compartment
- Battery—48-amp-hr
- Bumpers—front and rear, painted
- Disc brakes—front
- Doors, cargo, side & rear, double—no glass
- Door locks—all doors
- Electronic Ignition System
- Floor mat—driver's compartment side only
- Fuel tank—22 gallons
- Glove box
- Headliner—driver's compartment
- Heater—Fresh Air with defroster
- Horn—single
- Hubcaps—painted
- Jack—axle-type (B300); bumper-type (B100 and B200)
- Lights—backup; combined side marker light and reflector; front, amber (2); rear, red (2); dome, driver and cargo compartment
- Mirrors, exterior—dual, painted, 5" x 7"
- Oil filter—throw-away-type
- Oil pressure indicator light
- Seat—driver's, bucket-type, including seat belt and retractors
- Shock absorbers—front and rear
- Spare tire carrier
- Sun visor—driver only
- Traffic hazard warning switch
- Windshield washers—wiper-arm-mounted
- Windshield wipers—two-speed

N.A.D. (Non-Aqueous Dispersion) Acrylic Enamel is the finish for Dodge Tradesman models. It was selected because of its durability and resistance to fading, nicks, and abrasion.

*This color is an extra-cost paint on all models.

EQUIPMENT PACKAGE FOR GVW RATING—109" WB

MODEL	B100 VANS		B200 VANS		B300 VANS	
GVW	4600 LBS.	4800 LBS.	5500 LBS.	6100 LBS.	6400 LBS.	7000 LBS.
EQUIPMENT INCLUDED IN GVW PACKAGES	STANDARD	1390 LBS. REAR SPRINGS	STANDARD	11" CLUTCH FOR 6-CYL. 3600 LBS. REAR AXLE 1540 LBS. FRONT SPRINGS 1930 LBS. REAR SPRINGS H78-15-B (4 PR.) TIRES	STANDARD	8.00-16.5-D (8 PR.) TIRES
GVW					7500 LBS.	7700 LBS.
EQUIPMENT INCLUDED IN GVW PACKAGES					2570 LBS. REAR SPRINGS 8.00-16.5-E (10 PR.) TIRES	1645 LBS. FRONT SPRINGS 2570 LBS. REAR SPRINGS 8.00-16.5-E (10 PR.) TIRES

EQUIPMENT PACKAGE FOR GVW RATING—127" WB

MODEL	B100 VANS		B200 VANS		B300 VANS	
GVW	4600 LBS.	4800 LBS.	5500 LBS.	6100 LBS.	6400 LBS.	7000 LBS.
EQUIPMENT INCLUDED IN GVW PACKAGES	STANDARD	1390 LBS. REAR SPRINGS	STANDARD	11" CLUTCH FOR 6-CYL. 3600 LBS. REAR AXLE 1930 LBS. REAR SPRINGS H78-15-B (4 PR.) TIRES	STANDARD	8.00-16.5-D (8 PR.) TIRES
GVW					7700 LBS.	8200 LBS.(1)
EQUIPMENT INCLUDED IN GVW PACKAGES					1645 LBS. FRONT SPRINGS 2570 LBS. REAR SPRINGS 8.00-16.5-E (10 PR.) TIRES	1720 LBS. FRONT SPRINGS 3100 LBS. REAR SPRINGS 8.75-16.5-E (10 PR.) TIRES

EQUIPMENT PACKAGE FOR GVW RATING—MAXIVAN

MODEL	B200 VANS	B300 VANS
GVW	6100 LBS.	6400 LBS.
EQUIPMENT INCLUDED IN GVW PACKAGES	STANDARD	STANDARD
GVW		7000 LBS.
EQUIPMENT INCLUDED IN GVW PACKAGES		2570 LBS. REAR SPRINGS 8.00-16.5-E (10 PR.) TIRES
GVW		7700 LBS.
EQUIPMENT INCLUDED IN GVW PACKAGES		1645 LBS. FRONT SPRINGS 2570 LBS. REAR SPRINGS 8.75-16.5-E (10 PR.) TIRES
		8200 LBS.(1)
		1720 LBS. FRONT SPRINGS 3100 LBS. REAR SPRINGS 8.75-16.5-E (10 PR.) TIRES

DIMENSIONS

EXTERIOR			INTERIOR		
LENGTH, OVERALL	109" WB	176.0"	LENGTH (RR. DRS. TO ENG. HSG.)	109" WB	117.3"
	127" WB	194.0"		127" WB	135.3"
	MAXIVAN 127" WB	212.0"		MAXIVAN 127" WB	153.3"
WIDTH (ALL)		79.8"	LENGTH AT BELTLINE (RR. DRS. TO SEATS)	109" WB	93.7"
HEIGHT, MAX. (ALL)		78.7"		127" WB	111.7"
CARGO DOOR OPENINGS				MAXIVAN 127" WB	129.7"
HEIGHT (ALL)		47.2"	WIDTH AT WHEEL HSG. (ALL)		50.0"
WIDTH (HINGED)		49.2"	WIDTH AT FLOOR (ALL)		68.2"
WIDTH (SLIDING)		42.0"	HEIGHT, FLOOR TO ROOF (ALL)		53.2"

ALL SPRING RATINGS ARE "CAPACITY AT GROUND."

(1) REQUIRES AUTOMATIC TRANSMISSION

NOTE:

Due to occasional printing irregularities, the colors shown may vary slightly from actual hues. See your Dodge Dealer for accurate color chips.

Tradesman van specifications.

MODEL	B100 VANS	B200 VANS B200 MAXIVANS 127" WB	B300 VANS B300 MAXIVANS 127" WB
AXLE, FRONT—CAPACITY	2700 LBS.	3100 LBS.	3300 LBS.
AXLE, REAR—CAPACITY	2700 LBS.	3300 LBS., 3600 LBS. MAXIVAN	5500 LBS.
—RATIOS FOR 6-CYL. MODELS	3.5, 3.2	3.5, 3.2	4.1, 3.5(e)
—RATIOS FOR 8-CYL. MODELS	3.2, 2.7, 3.5	3.2, 2.7, (d), 3.5	4.1, 3.5
BRAKES—SERVICE W/DUAL MASTER CYLINDER AND WARNING LIGHT	YES	YES	YES
—FRONT DISC	11.75" x 1.25"	11.75" x 1.25"	12.82" x 1.19"
—REAR DRUM	10" x 2.5"	11" x 2.5"	12" x 2.5"
BRAKES, POWER	VACUUM 9" OUTSIDE DIAMETER DUAL DIAPHRAGM BOOSTER	VACUUM 9" OUTSIDE DIAMETER DUAL DIAPHRAGM BOOSTER	VACUUM 9" OUTSIDE DIAMETER DUAL DIAPHRAGM BOOSTER
CLUTCH—FOR 6-CYL. MODELS	10" DIA., 11" DIA.	10" DIA., 11" DIA., 11" DIA. MAXIVAN	11" DIA.
—FOR 8-CYL. MODELS	11" DIA.	11" DIA.	11" DIA.
ENGINE—6-CYL. MODELS(b)	225 CU. IN.	225 CU. IN.	225 CU. IN.
—8-CYL. MODELS(b)	318 CU. IN., 360 CU. IN.	318 CU. IN., 360 CU. IN., 440 CU. IN.(f)	318 CU. IN., 360 CU. IN., 440 CU. IN.(g)
SPRINGS, FRONT—COIL	1240 LBS. (109" WB) 1340 LBS. (109" WB)	1340 LBS. (109" WB) 1540 LBS. (109" WB) 1615 LBS. (109" WB)	1570 LBS. (109" WB) 1645 LBS. (109" WB) 1720 LBS. (109" WB)
—FOR 6-CYL. MODELS—CAP. @ GROUND	1340 LBS. (127" WB) 1540 LBS. (127" WB)	1540 LBS. (127" WB) 1615 LBS. (127" WB)	1570 LBS. (127" WB) 1645 LBS. (127" WB) 1720 LBS. (127" WB)
—FOR 8-CYL. MODELS—CAP. @ GROUND	1340 LBS. (ALL WB) 1540 LBS. (ALL WB)(c)	1340 LBS. (109" WB) 1540 LBS. (109" WB)(c) 1615 LBS. (109" WB) 1540 LBS. (127" WB) 1615 LBS. (127" WB)(c) 1720 LBS. (127" WB)	1570 LBS. (ALL WB) 1645 LBS. (ALL WB)(c) 1720 LBS. (127" WB)
SPRINGS, REAR—LEAF—CAP. @ GROUND	1170 LBS. 1390 LBS.	1640 LBS. 1930 LBS.	2020 LBS. 2570 LBS., 3100 LBS.
TRANSMISSION	3-SPD. MANUAL A727—AUTOMATIC	3-SPD. MANUAL A727—AUTOMATIC	3-SPD. MANUAL A727—AUTOMATIC
TIRES (5) TUBELESS B/W PASS.-CAR-TYPE	E78-15-B (4 PR.) HR78-15-B (4 PR.)(a)	—	—
(4) TUBELESS B/W PASS.-CAR-TYPE	—	G78-15-B (4 PR.) LR78-15-B (4 PR.)(a)	—
(4) TUBELESS B/W TRUCK-TYPE VAN (109"-127")	—	—	8.00-16.5-C (6 PR.) 8.75-16.5-E (10 PR.)
MAXIVAN (127")	—	H78-15-B (4 PR.) LR78-15-B (4 PR.)(a)	8.00-16.5-D (8 PR.) 8.75-16.5-E (10 PR.)
WHEELS (5) FIVE-HOLE DISC	15" x 5.50"	—	—
(4) FIVE-HOLE DISC	—	15" x 5.50"	—
(4) EIGHT-HOLE DISC	—	—	16.5" x 6.0"
			16.5" x 6.75"

(a) WSW steel-belted radials.

(b) Includes Electronic Ignition System.

(c) Minimum front springs required with optional air conditioning.

(d) Available with 5500 lbs. GVW only.

(e) Available with A727 automatic transmission only.

(f) Available with 127" WB and 6100 lbs. GVW only.

(g) Available with 127" WB Van and Maxivan only.

NOTE: Optional Emission Reduction Control System is required with all models registered in the state of California.

Equipment in red—optional at extra cost.

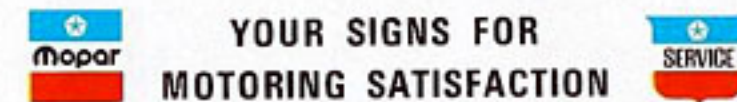


The vans from Dodge.

Just because we call them Tradesman vans doesn't mean they have to act like tradesmen. Far from it. Beneath their shiny skins are the kind of big, freewheeling vans that play just as easily as they work. Throw open their doors. And they're ready to take on a weekend's worth of dirt

bikes, surfboards, scuba gear, camping equipment, fishing stuff. And friends. Wherever you're heading, there's nothing better for getting your gear from here to there than a versatile Dodge van.

Custom touches such as "mag" wheels, fat tires, paint trim and sidepipes are available through various customizers.



All product illustrations and specifications are based on authorized information. Although all descriptions are believed correct at publication, accuracy cannot be guaranteed. Some of the equipment shown on product illustrations is optional, at extra cost. Dodge reserves the right to make changes from time to time, without notice or obligation, in prices, specifications, colors, and materials and to change or discontinue models.