

1969 DODGE STATION WAGONS

plus trailer-towing requirements



Dodge is turning up the fever now!

DODGE fever





Monaco/Polara

MONACO & POLARA STATION WAGONS

Monaco and Polara station wagons are thoroughbreds that belong in everyone's winning circle. New from the ground up, they combine utility and high-style, cargo space and luxurious people comfort in ways that are uniquely appealing and totally satisfying. Both are available in 2- and 3-seat models. The attractive wood-grained material is standard on Monaco models—not available on Polara models. Monaco station wagons also offer convenience lights, front center armrest, dome reading light, deluxe steering wheel, lockable storage compartment, and wheel covers—all as standard equipment.



Carpeted Cargo Area. The large cargo area is carpeted as standard equipment in Monaco—optional at extra cost in Polara station wagons. The distance between wheelhouses is over 48 inches, which means that a four-by-eight piece of plywood will fit easily—flat on the floor. There are convenient storage wells in the tops of the wheelhouse covers—an industry exclusive.



Monaco & Polara Station Wagon Features

Double-Hinged Tailgate. The double-hinged tailgate is standard on all Monaco and Polara station wagons. Single-handle operation—move handle in one direction to open as a door—move handle in other direction to open as a tailgate. Provides the utility and convenience of being able to swing the tailgate down as a normal tailgate, or of swinging it open to the side like a door. Power tailgate window standard on all Monaco and Polara station wagons.



Dual Air Conditioning. An industry-exclusive on Monaco and Polara models, dual air conditioning is available as an extra-cost option. It provides a rear unit on the ceiling as well as the front unit. The front unit alone is also available.

Tailgate Window Washer and Wipers. Optional on Monaco and Polara station wagons is the tailgate window washer and wipers. With concealed washer and wipers in the tailgate, it is now as easy to clean the tailgate window as it is the windshield.



The Third Seat. The comfortable, rear-facing third seat is easy for passengers to enter with the double-hinged tailgate open as a door. Getting in and out is made easier with the optional assist handles shown in the adjoining photograph.

Integral Wind Deflector. Standard on all Monaco and Polara station wagons is the new, integral wind deflector—another industry exclusive! It deflects wind across the rear window to help keep it clean. When the rear window is open, it aids flow-through ventilation, and keeps dust, rain, and fumes out of the interior. Assist handles are optional at extra cost.



Monaco Standard Seat.* The standard seat is the bench cushion with individual backs and folding front center armrest in all-vinyl—in dark blue, green, white, tan, and black.

Polara Standard Seat. The standard seat in Polara station wagons is a bench seat in all-vinyl. The vinyl is available in blue, green, tan, and black.

***Monaco Optional Comfort Seating Package.** Optional at extra cost in Monaco station wagons is the Comfort Seating Package with a 50/50 bench seat with individual armrests and reclining passenger seat-back in all vinyl. The vinyl is available in black or tan only.

CORONET STATION WAGONS

Coronet station wagons bring to driving all of the effortless, quiet smoothness of a cruising sailboat. From the distinctive wood-grain vinyl overlay on the sides and black grille of the 500, to the distinctive trims of the 440 and

Deluxe, Coronet offers a wide choice of style, trim, and price—in two and three-seat models.



Coronet 500/Coronet 440

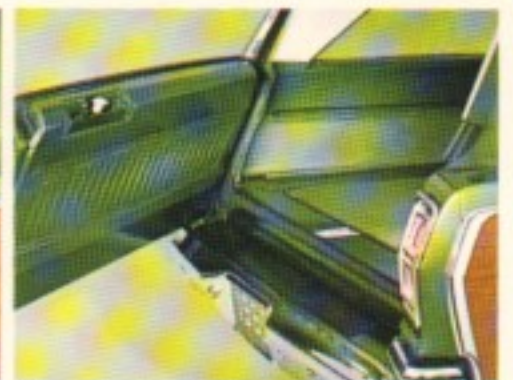
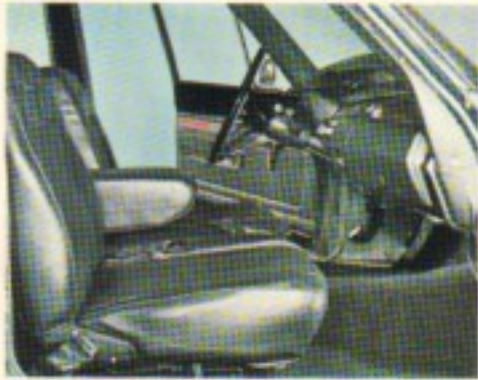


Third Seat. The luxuriously comfortable rear-facing third section folds down easily, as does the second seat, to form an impressively large cargo compartment, capable of holding up to 84.9 cubic feet of cargo.



Coronet 500 Standard Seat. The standard seat in Coronet 500 station wagons is an all-vinyl bench seat. The vinyl is available in tan, dark blue, green, and black.





Coronet 500 Optional Seat. Optional at extra cost are the full-foam, all-vinyl bucket seats—in dark blue, tan, and black. An additional extra-cost option is the fixed center cushion and folding front center armrest.

Coronet 440 Standard Seat. The standard seat in Coronet 440 station wagons is an all-vinyl bench seat. The vinyl is available in tan, dark blue, green, and black.

Double-Hinged Tailgate. The double-hinged tailgate is standard on all Coronet station wagons. Provides the utility and convenience of being able to swing the tailgate down as a normal tailgate, or of swinging it open to the side like a door. Power tailgate window standard on 3-seat wagons. Tailgate window washer and wipers optional at extra cost.





CORONET DELUXE

One of the best station wagon buys in the industry, Coronet Deluxe provides plenty of cargo and people room—the kind of room families on the go need for children, pets, and cargo. It is available as either a Six or V-8 and in 2-seat model only. Naturally, the Deluxe has the double-hinged tailgate as standard equipment, too. The tailgate window washer is available at extra-cost.



Coronet Deluxe Standard Seat. The standard seat in the Coronet Deluxe station wagon is an all-vinyl bench seat. The vinyl is available in blue, tan, and black.



Spare Tire Mounting and Cover. The spare tire is mounted inside the station wagon behind the rear wheelhousing with a swing-out plastic cover for a neat, uncluttered appearance.



SPORTSMAN

In addition to being a complete, miniature home on wheels, the Sportsman camper conversion remains an ideal family or commuting vehicle—maneuverable in traffic, and easy to park in small spaces with its 108-inch wheelbase and 189-inch overall length. With a Sportsman camper conversion—self-contained and independent, you can go anywhere, and do anything, all at a moment's notice.



The full-foam, all-vinyl front bucket seats are standard. The vinyl is available in tan, blue, green, and black. The rest of the interior depends on the particular camper conversion that is selected. Most contain a range, icebox, sink, water tank, dinette table, storage space, and interior trim.



Dodge STATION WAGON SPECIFICATIONS, EQUIPMENT

MONACO & POLARA

Engine Lineup

Monaco Standard	383-cu.-in. 2-bbl. V-8
Optional	383-cu.-in. 4-bbl. V-8
	440-cu.-in. 4-bbl. V-8
Polara Standard	318-cu.-in. 2-bbl. V-8
Optional	383-cu.-in. 2-bbl. V-8
	383-cu.-in. 4-bbl. V-8
	440-cu.-in. 4-bbl. V-8

Transmissions

3-Speed Manual	
Monaco	standard with 383 2-bbl. only (NA other engines)
Polara	standard with 318 2-bbl. and 383 2-bbl. (NA other engines)
TorqueFlite Automatic, Column Mounted	
Monaco	required option with 383 4-bbl. and 440 (opt. 383 2-bbl.)
Polara	required option with 383 4-bbl. and 440 (opt. 318 and 383 2-bbl.)

Brakes

Monaco and Polara	
Standard	drum type, 11" x 3" front, 11" x 2½" rear
Optional	drum type, 11" x 3" front and rear
Optional	front disc and 11" x 2½" drum rear (Power Brakes req.)

Tires Monaco and Polara

	Tire	Wheel
Standard	8.85 x 15 2 ply (4PR)A	6.0JJ
Optional	9.15 x 15 2 ply (4PR)B	6.5JJ

A—NA wagons with air conditioning and 440; NA wagons with Trailer Towing.

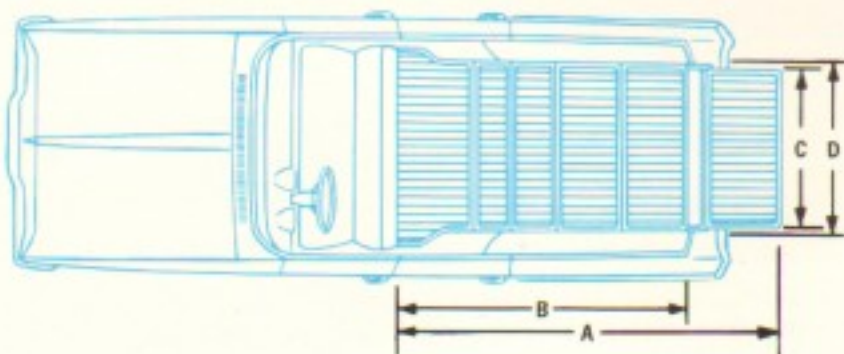
B—Minimum size required on wagons with Trailer Towing; wagons with 440, single air conditioning and Trailer Towing; wagons with dual air conditioning. Whitewalls optional all.

Fiberglass-belted tires available at extra cost in the size shown below—NA with dual air conditioning.

Size: J78 x 15 WSW Code: U44

Basic Dimensions Monaco and Polara

Wheelbase	122.0"	Headroom—third	36.4"
Overall length—2- and 3-seat	220.4"	Legroom—front	41.8"
Width—2- and 3-seat	79.2"	—rear	39.4"
Height	57.9"	—third	32.4"
Track—front	62.1"	Shoulder-room—front	63.4"
—rear	63.4"	—rear	62.8"
Headroom—front	39.6"	—third	48.5"
—rear	40.2"		



A—Length, back of front seat to end of open tailgate	119.40"
B—Length, back of front seat to closed tailgate	98.98"
C—Width between wheelhouses at floor	48.50"
D—Width of rear opening at floor	54.50"
Length, back of second seat to end of open tailgate	83.50"
Length, back of second seat to closed tailgate	63.08"
Maximum height of rear opening	29.00"
Cargo capacity (cu. ft.)	93.1
Glass area (sq. in.)	5780

CORONET

Engine Lineup

Coronet 500	
Standard	318-cu.-in. 2-bbl. V-8
Optional	383-cu.-in. 2-bbl. V-8
	383-cu.-in. 4-bbl. V-8

Coronet 440 & Deluxe

Standard 6	225-cu.-in. Slant Six
Standard V-8	318-cu.-in. 2-bbl. V-8
Optional	383-cu.-in. 2-bbl. V-8
	383-cu.-in. 4-bbl. V-8

Transmissions

3-Speed Manual	
Standard with 225 Slant Six & 318 V-8 (NA other engines)	

TorqueFlite Automatic, Column Mounted

Required option with 383 2- and 4-bbl. (Opt. 225 & 318)

Brakes

Standard	drum type, 10" x 2½" front and rear
Optional	drum type, 11" x 3" front 11" x 2½" rear
Optional	front disc and 10" x 2½" drum rear (14- or 15-inch wheels, power brakes req.)

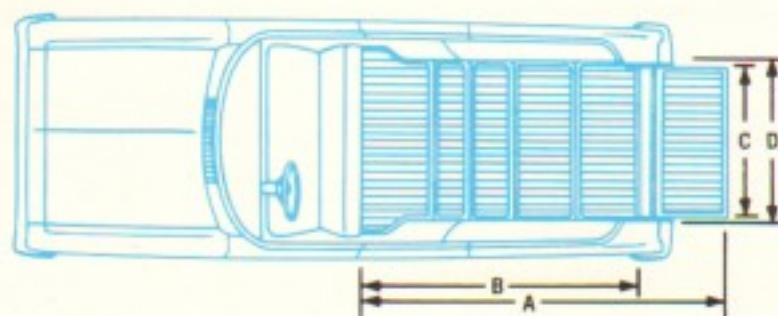
Tires

	Tire	Wheel
Standard	8.25 x 14 2 ply (4PR)	5.5JK
Optional	8.55 x 14 2 ply (4PR)A	5.5JK

A—Min. size required in wagons with Trailer Towing. Standard with 383 engine. Whitewalls optional all.

Basic Dimensions

Wheelbase	117.0"	Headroom—third	35.0"
Overall length—2- and 3-seat	210.0"	Legroom—front	41.9"
Width	76.5"	—rear	36.3"
Height	56.6"	—third	31.8"
Track—front	59.5"	Shoulder-room—front	58.1"
—rear	59.2"	—rear	58.1"
Headroom—front	39.4"	—third	50.5"
—rear	39.3"		



A—Length, back of front seat to end of open tailgate	114.5"
B—Length, back of front seat to closed tailgate	91.7"
C—Width between wheelhouses at floor	45.3"
D—Width of rear opening at floor	53.2"
Length, back of second seat to end of open tailgate	80.0"
Length, back of second seat to closed tailgate	57.4"
Maximum height of rear opening	30.0"
Cargo capacity (cu. ft.)	84.9
Glass area (sq. in.)	4535

& DIMENSIONS

SPORTSMAN

Engine Lineup

Standard 6	170-cu.-in. Slant Six
Optional 6	225-cu.-in. Slant Six
Optional V-8	318-cu.-in. V-8

Transmissions

3-Speed Manual

Standard with 170 and 225 Six and 318 V-8

TorqueFlite Automatic, Instrument-Panel-Mounted

Optional with all engines.

Brakes

Standard drum type, 10" x 2½" front, 10" x 2½" rear

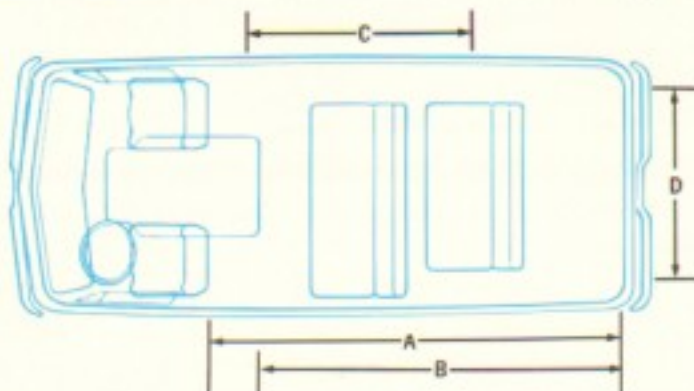
Tires

	Tire	Wheel
Standard	6.95 x 14 4 ply (8PR)	5.0
Optional	7.00 x 14 (6PR) Truck Type	5.5
Optional	7.00 x 14 (8PR) Truck Type	5.5
Optional	7.75 x 14 2 ply (4PR) (1)	5.0
Optional	8.15 x 15 2 ply (4PR)	5.5
Optional	8.15 x 15 4 ply (8PR) (2)	5.5

1—NA 50" Wb. 2—Also included in the heavy-duty package for 90" wheelbase. Whitewalls optional all except 7.00 x 14 6 or 8PR.

Basic Dimensions

	90" wb.	108" wb.
Overall length	171.0"	189.0"
Overall width	78.6"	78.6"
Tread—front	60.78"	60.78"
—rear	60.63"	60.63"
Cubic-foot capacity	213.0	256.0
Effective headroom—front	36.3"	36.3"



	90" wb.	108" wb.
A—Length—rear door to seat-back	102.4"	120.04"
B—Length—rear door to engine cover	85.6"	103.6"
C—Door opening—side door width	51.52"	51.52"
Door opening—side door height	47.34"	47.34"
Height—maximum passenger area	52.12"	52.12"
Door opening—rear door, height	47.34"	47.34"
D—Door opening—rear door, width	51.52"	51.52"
Width—maximum inside	67.68"	67.68"
Volume—capacity, cubic foot	213	256



Selected Options

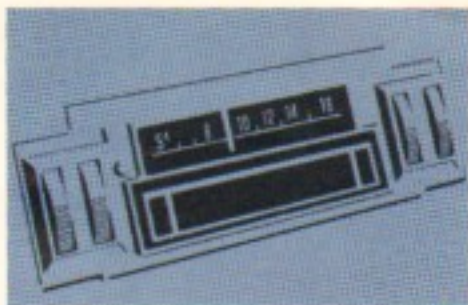
	Monaco	Polara	Coronet 500	Coronet 440	Coronet Deluxe
Air conditioner, dual	E	E	E	E	E
Air conditioner, dual, w/auto. temp. control	E	E	NA	NA	NA
Assist handles	E	E	NA	NA	NA
Carpet, cargo compartment	S	E	NA	NA	NA
Cornering lights	E	E	NA	NA	NA
Dual-hinge tailgate	S	S	S	S	S
Engines—					
225-cu.-in. 6	NA	NA	NA	S	S
318-cu.-in. V-8	NA	S	S	S	S
383-cu.-in. 2-bbl. V-8	S	E	E	E	E
383-cu.-in. 4-bbl. V-8 (Available auto. trans. only)	E	E	E	E	E
440-cu.-in. 4-bbl. V-8 (Available auto. trans. only)	E	E	NA	NA	NA
Lock, rear compartment	S	E	E	E	E
Luggage rack, roof mounted	E	E	E	E	E
Moldings—upper door frame	NA	E	S	E	E
—sill moldings	NA	E	NA	NA	E
Roof-mounted air deflector	S	S	NA	NA	NA
Seats—Bench front	S	S	S	S	S
—Bucket front w/center cushion & armrest	E	NA	E	NA	NA
Speed control—V-8 only. Auto. trans. required	E	E	E	E	E
Stereo tape/AM radio	E	E	E	E	E
Stereo AM/FM multiplex radio	E	E	NA	NA	NA
Tailgate—					
Power window	S	S	E(1)	E(1)	E
Wiper/washer	E	E	E(2)	E(2)	E
Step plate—2-seat only	E	E	NA	NA	NA

(1) Standard on 3-seat models. (2) Power tailgate window required on 2-seat models.

	Custom Sportsman	Sportsman	Custom Sportsman	Sportsman
Alternator				
30 amp	S	S		
37 amp	E	E		
45 amp	E	E		
60 amp	E	E		
Backup lights	S	S		
Battery				
53 amp.-hr.	S	S		
59 amp.-hr.	E	E		
70 amp.-hr.	E	E		
Brakes—Drum, dual system, auto. adj.	S	S		
Bumpers, front & rear				
—painted	NA	S		
—bright finish	S	E		
—bright finish & bumper guards front	NA	E		
Bumper guards, front				
—painted	NA	E		
—bright finish	E	NA		
Cleaner Air System	S	S		
Directional signals—parking & taillamps, front & rear, class "A"	S	S		
Engines—				
170-cu.-in. 6	S	S		
225-cu.-in. 6	E	E		
318-cu.-in. V-8	E	E		
Fresh-air heater and defroster	S	S		
Glass, rear door				
—fixed	S	S		
—vent	NA	E		
—vent	E	NA		
Hubcaps, 14"—painted			NA	S
14"—bright finish			S	E
15"—bright finish			S	E
Instrument panel, padded			S	S
Lighter, cigar			S	E
Paint, two-tone			E	E
Paint, two-tone comm.			NA	E
Radio			E	E
Reflectors, side marker			S	S
Rubber floor mat, passenger compartment				
—108" wb.			S	E
—90" wb.			S	E
Safety-action inside door release levers			S	S
Safety belts				
—Front seats (2)			S	S
—Intermediate (2)			S	S
Seats				
—Front buckets (2)			S	S
—Intermediate bench			S	S
—Rear bench with (2) seat belts			E	E
—Rear bench with (3) seat belts			E	E
Power steering (with 8 cyl.)				
Steering wheel				
—Horn button			NA	S
—Horn ring—bright finish			S	E
Sun visors, padded			S	S
Tinted glass				
—All windows (Vent glass reg. in rear doors)			E	E
—Windshield only			E	E



Automatic Speed Control. Operated by two simple controls on the turn-signal lever, the Automatic Speed Control maintains the speed you select without the need to keep your foot on the accelerator.



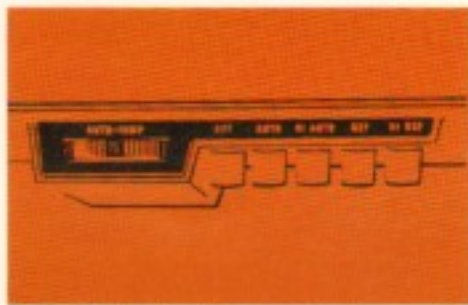
Stereo Tape and Radio. The Stereo Tape and AM radio combination, available on Monaco, Polara and Coronet, provides personalized entertainment with each cartridge providing 80 minutes of music.



Time Delay Ignition Switch Light. Standard on Monaco models, optional on the others, is the ignition switch light. When the front doors are opened, it goes on and stays on for several seconds after the doors are closed.



Comfort Seating Package. Part of the extra-cost, optional Comfort-Seating Package is a front passenger reclining seat-back. Available on Monaco only.



Air Conditioning. Air conditioning makes certain that you arrive cool and refreshed. Additional options on Monaco and Polara are Automatic Temperature Control and Dual Air Conditioning.



Optional Engines. It is extremely important that you pick an engine with plenty of power to handle the additional weight of your trailer. Consult with your Dodge dealer about the many optional engines.



Station Wagon Luggage Rack. Made of long-lasting stainless steel and aluminum, the rooftop luggage rack for Monaco, Polara and Coronet station wagons makes more room for people on the inside.

DART trailer-towing package—code A35

Qualifications

Maximum loaded gross trailer weight is 2,000 lbs. Trailer-Towing Package is required for all trailers with a gross weight of 1,500 to 2,000 lbs. (Trailer-Towing Package is available with automatic transmission only, NA 170 or 383 engines. NA with 6-cyl. w/air conditioning.)

Standard Equipment

- Maximum cooling system includes: • High-capacity radiator • Large 17" cooling fan—7 blades • Fan shroud and hood seal • Heavy-duty rear axle—3.23 ratio • Heavy-duty suspension, front and rear, w/anti-sway bar • Heavy-duty turn-signal flasher • Larger brakes, 10" x 2 1/4" front and 10" x 1 3/4" rear (std. V-8) • Wide-rim wheels (5.5J) • Heavy-duty stop-lamp switch

Required Items (Extra cost—coded separately)

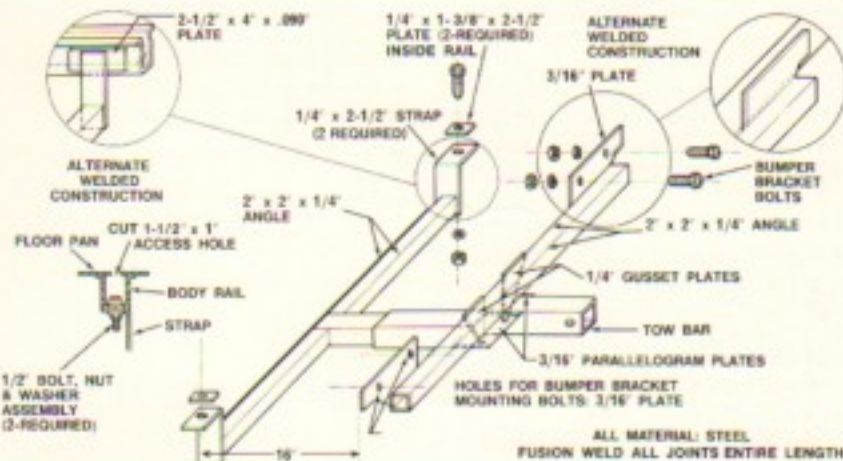
- Automatic transmission • Large tires, D70 x 14 (225, 273, 318 Eng.) E70 x 14 on 340 Eng.

Recommended Optional Equipment (Extra cost—coded separately)

- Power steering • Sure-Grip rear axle • High-output alternator—46-amp. • Heavy-duty battery—70-amp.-hr. • Air conditioner (V-8 only) • Disc brakes, front • Power brakes

Trailer Hitch Restrictions

A frame-type, load-equalizing hitch is required if the tongue load is 150 pounds or more. A frame hitch is satisfactory if the tongue load is less than 150 pounds, and the towing is not frequent.*



Trailer-towing requirements for 108" wb. Sportsman models

Trailers up to 2,000 lbs. Gross Weight

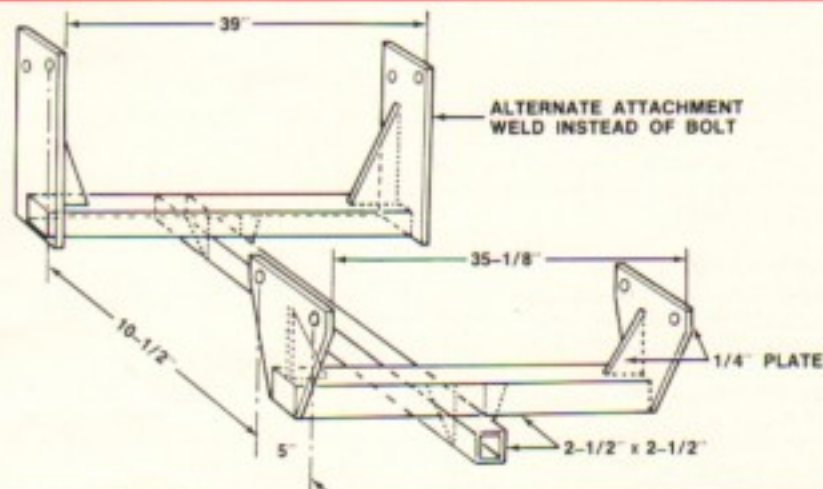
Engine	225		318	
	A745	A727	A745	A727
Transmission	10"	—	10"	—
Clutch	3.91	3.91	3.91	3.55, 3.91
Axle Ratio	1,200 lbs. cap. ea.	1,200 lbs. cap. ea.	1,200 lbs. cap. ea.	1,200 lbs. cap. ea.
Springs, front	1,410 lbs. cap. ea.	1,410 lbs. cap. ea.	1,410 lbs. cap. ea.	1,410 lbs. cap. ea.
Springs, rear	8.25-15-8PR	8.25-15-8PR	8.25-15-8PR	8.25-15-8PR
Tires	Flasher H.D. Vari.-Load, 46-Amp. Alternator and 70-Amp.-Hr. Battery			
Electrical				

Trailers up to 3,500 lbs. Gross Weight

Engine	318	
	A727	3.55, 3.91 or 3.23
Transmission	1,200 lbs. cap. ea.	1,200 lbs. cap. ea.
Axle Ratio	1,410 lbs. cap. ea.	1,410 lbs. cap. ea.
Springs, front	8.25-15-8PR	8.25-15-8PR
Springs, rear	Flasher H.D. Vari.-Load, 46-Amp. Alternator and 70-Amp.-Hr. Battery	
Tires		
Electrical		

Trailer Hitch Restrictions

Bumper hitches may be used for only occasional towing of trailers having a total weight of up to 2,000 lbs. and a maximum tongue load of 80 lbs. For more frequent or continuous towing of up to 2,000 lbs. total weight trailer, a non-equalizing hitch is satisfactory. Hitches for towing trailer weights of from 2,000 to 3,500 lbs. should be of the load-equalizing type and properly mounted to distribute the trailer tongue load. The trailer tongue load for this application should not exceed hitch manufacturers' recommendations.





Loading. The way in which your car and trailer handle on the road can be greatly improved by being careful that most of the weight is over and behind the rear axle of the trailer. Never overload your trailer.



Hitching and Unhitching. When you are hitching or unhitching a loaded trailer with a heavy tongue load, the job can be made a lot easier if you will simply have one or two people sit on the back of the trailer to lighten the tongue load.



Passing, Speed and Stopping. Allow at least twice the usual space when passing. High-crowned roads and gusty winds can cause problems when driving fast. To stop safely, allow one length of your car and trailer for each 10 miles an hour of speed.



Backing. It requires practice for most people to get used to backing a trailer. As an example, in order to back the trailer to the left, you have to turn the steering wheel as if you were backing your car to the right. Time spent in an empty parking lot will really pay off.



Turning. Turning corners can become simple with practice. Keep in mind that with your trailer your turn must be wider. The shorter the tongue of your trailer, the wider the turn must be. The longer the tongue of the trailer, the sharper the turn can be.

NOTE: On models equipped with the Trailer-Towing Package, the brakes are not self-adjusting and, therefore, require periodic adjustments; and the one-quart larger capacity radiator will require additional antifreeze. Tire pressures must be increased to those specified in the owner's manual. If water contamination of the rear axle lubricant occurs, it must be changed immediately.

Phil J. Dantano

Dodge

