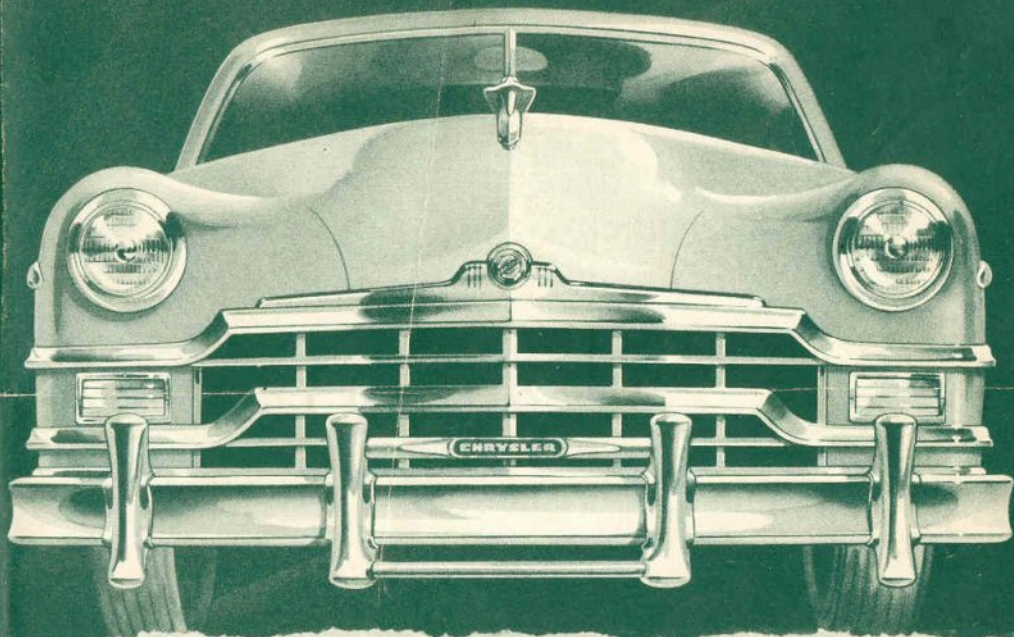


THE
Beautiful
CHRYSLER

★
Silver Anniversary Models

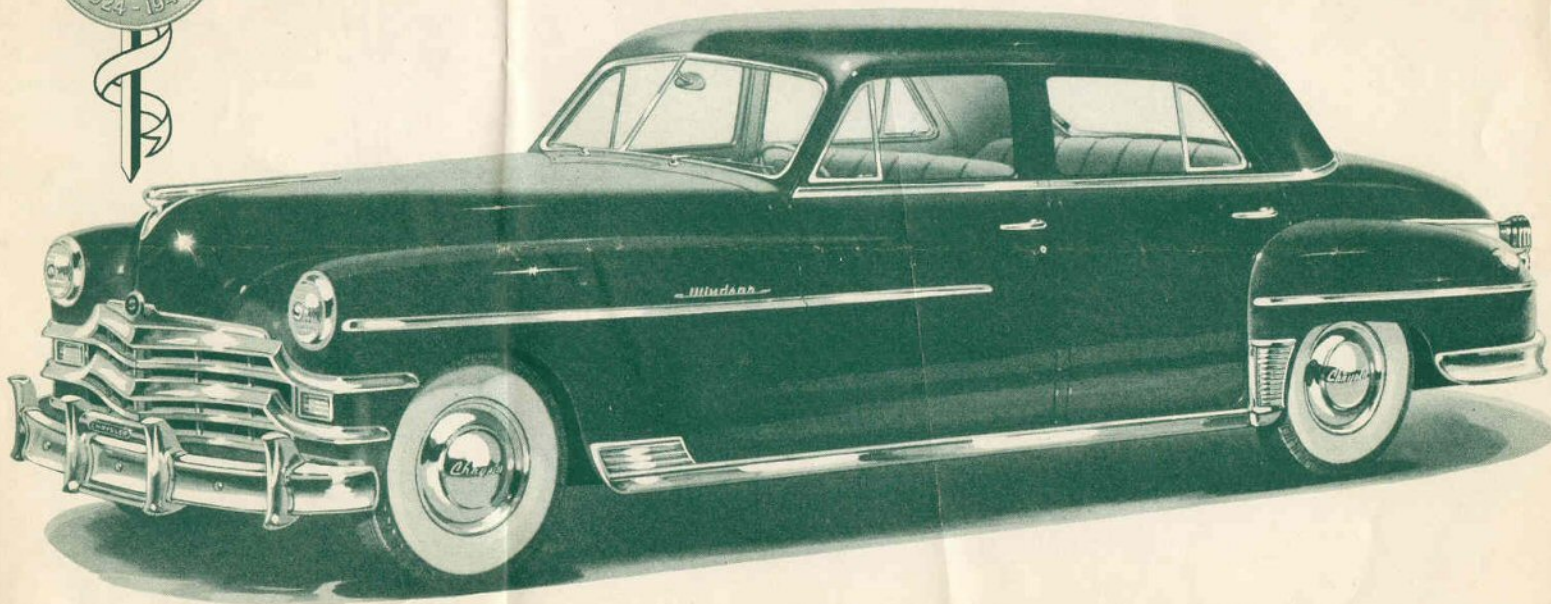


ABBOTT - STANSELL MOTOR CO.
CHRYSLER
San Jacinto at Folk

PLYMOUTH
C. 9684

*As distinctive as the first
Chrysler.... 24 years ago*

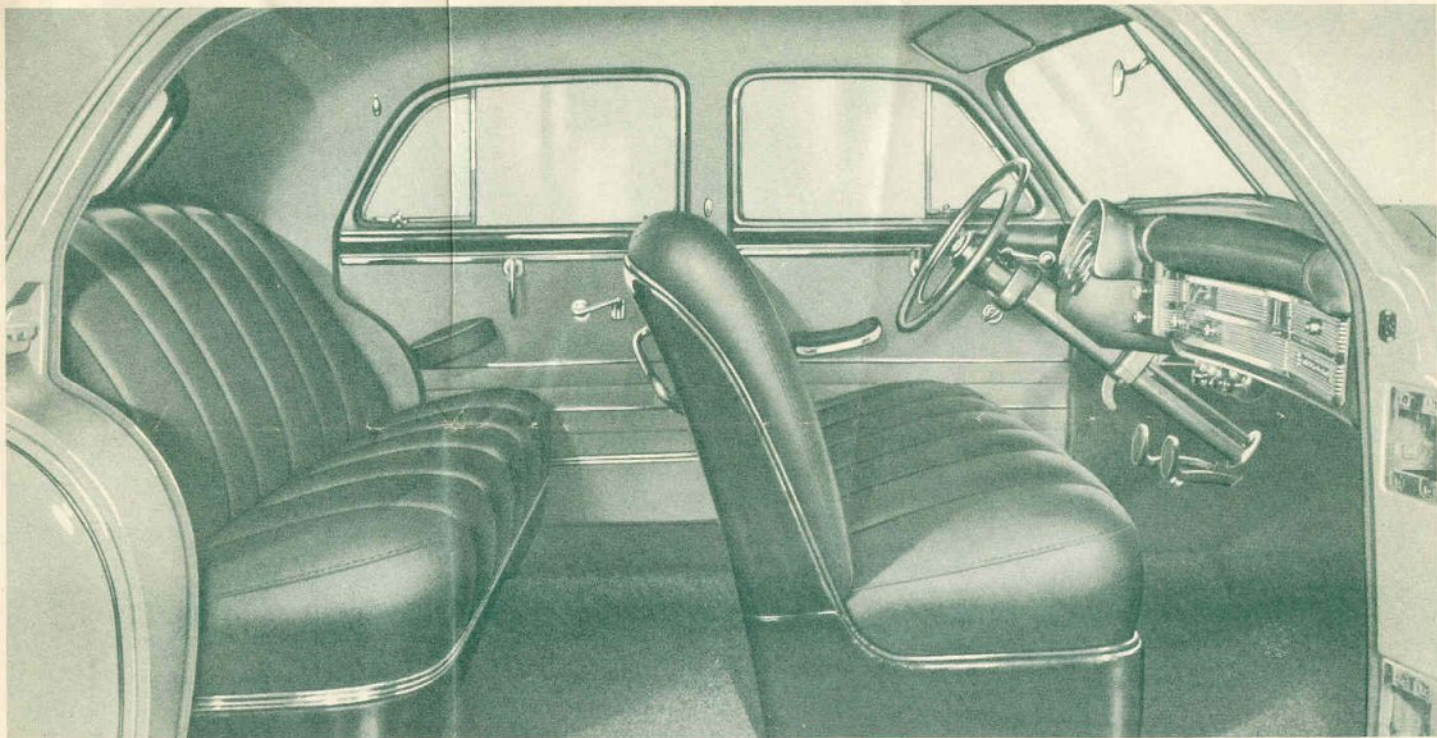
The Silver Anniversary *Chryslers*



The Silver Anniversary Chrysler Four Door Sedan

Beautiful—smart—distinctive—so utterly different from other cars in so many ways. A car that was designed from the inside out—with your comfort, convenience and safety always in mind. More room for your legs, more room above your head, more shoulder-room. And wider seats that are scientifically designed for

chair-height comfort so that you can ride completely relaxed. There's better visibility, too, in all directions. You can see more out of the new, larger windshield, the wider rear window and the extra-large side windows. The hood is shorter and the steering wheel is lower, so that you have better "see-ability" over the front.

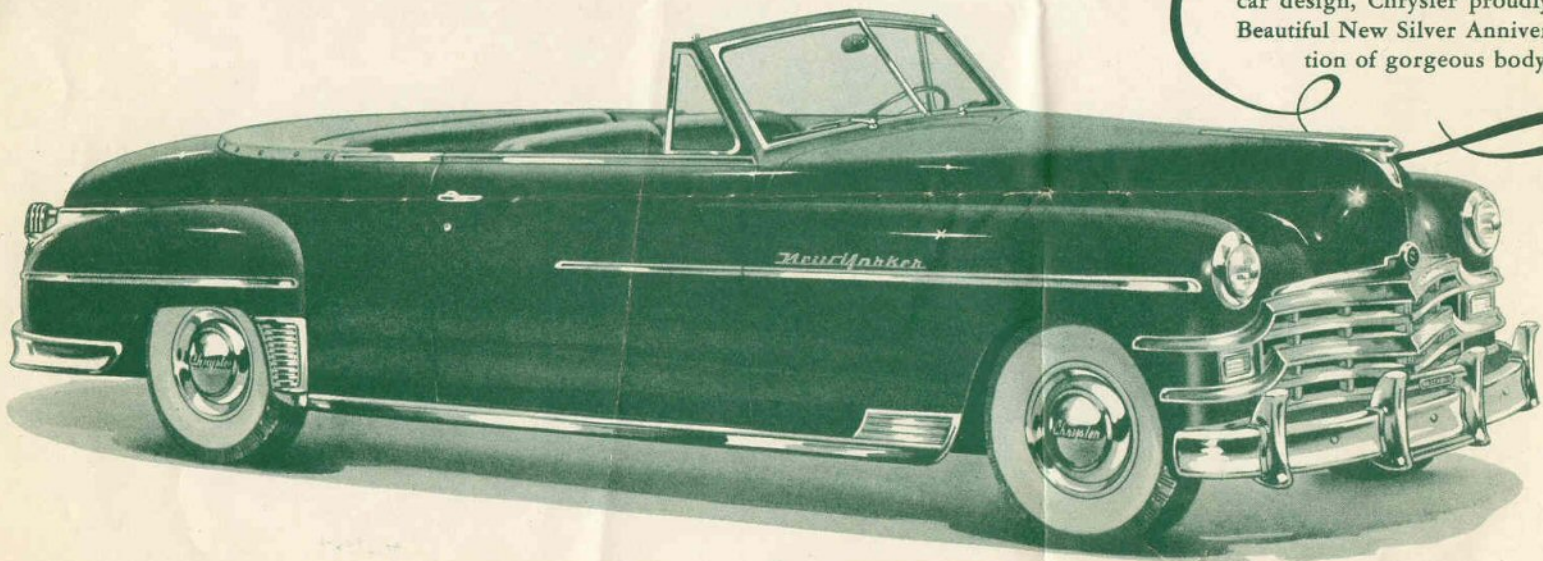


Luxurious is the word for it. Tailored to taste with rich fabrics, skillfully fashioned over deep, wide cushions. Armrests for all doors, handsome ashtrays in front and rear, assist handles that are securely mounted, folding center rear armrest, and doors that open wide and stay open for easy entrance or egress. "Cockpit Styling" of the front compartment features the new

Chrysler "Safety-Eye" for greater convenience and safety in reading the instruments while driving. Another great feature is the new Chrysler "Safety-Cushion" dash panel. This "Safety-Cushion" is made of thick, soft sponge rubber and is covered with leather. It protects front seat passengers, especially children, against sudden stops or collisions.

Distinctive... Distinguished.

Climaxing 25 years of engineering and car design, Chrysler proudly presents the Beautiful New Silver Anniversary Edition of gorgeous body coupe.



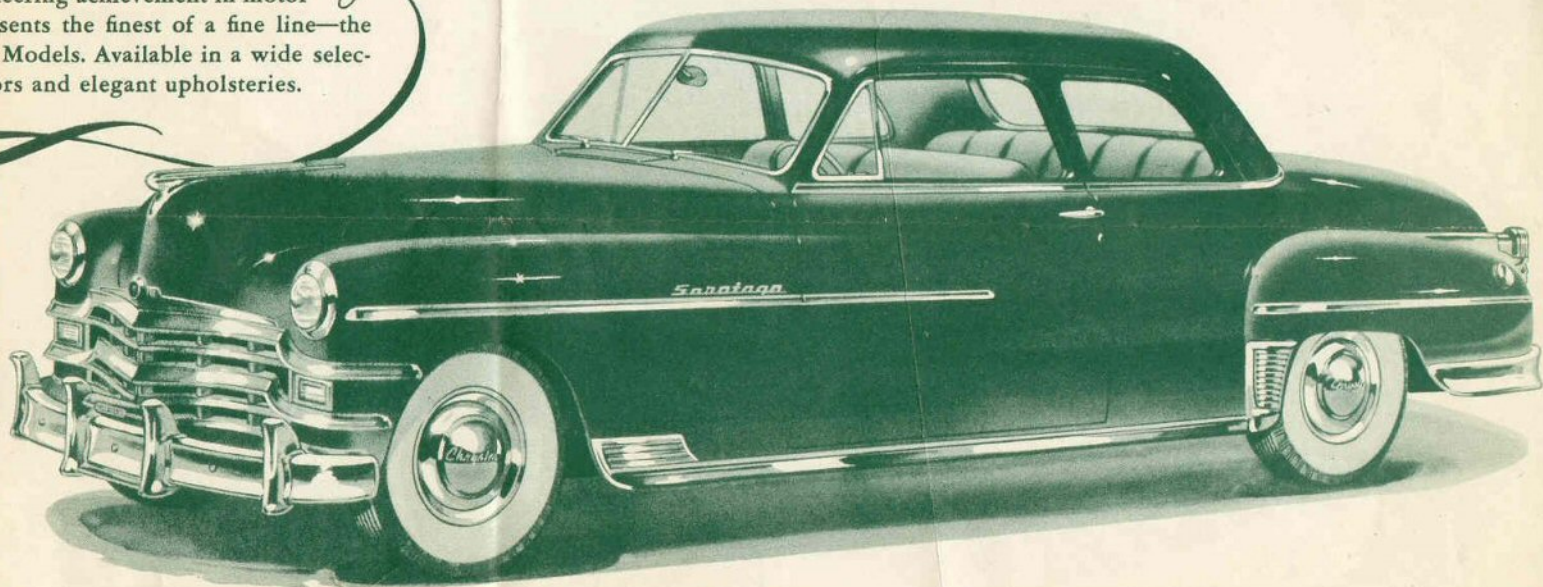
The Silver Anniversary Chrysler Convertible Coupe

A "dream-boat," most assuredly, and even more, when you forget for a moment its beauty and think of what is under the hood. The famous Chrysler Spitfire Engine, with High Compression design and more horsepower than you will ever need. The new Chrysler Prestomatic Fluid Drive Transmission—a miracle of driving ease. Safe-Guard Hydraulic Brakes with Bonded Brake Linings—so smooth—so

sure—so safe. The Safety Rim Wheel that holds the tire to the wheel, should you have a blow-out, and permits you to bring the car to a safe stop. The Chrysler Safety Level-Ride—the utmost in riding and driving comfort. These, and many more engineering and design features are what make a Chrysler such a thrilling, such a satisfactory car to own. Truly, you do "get the good things FIRST from Chrysler."

. . the finest of a fine line

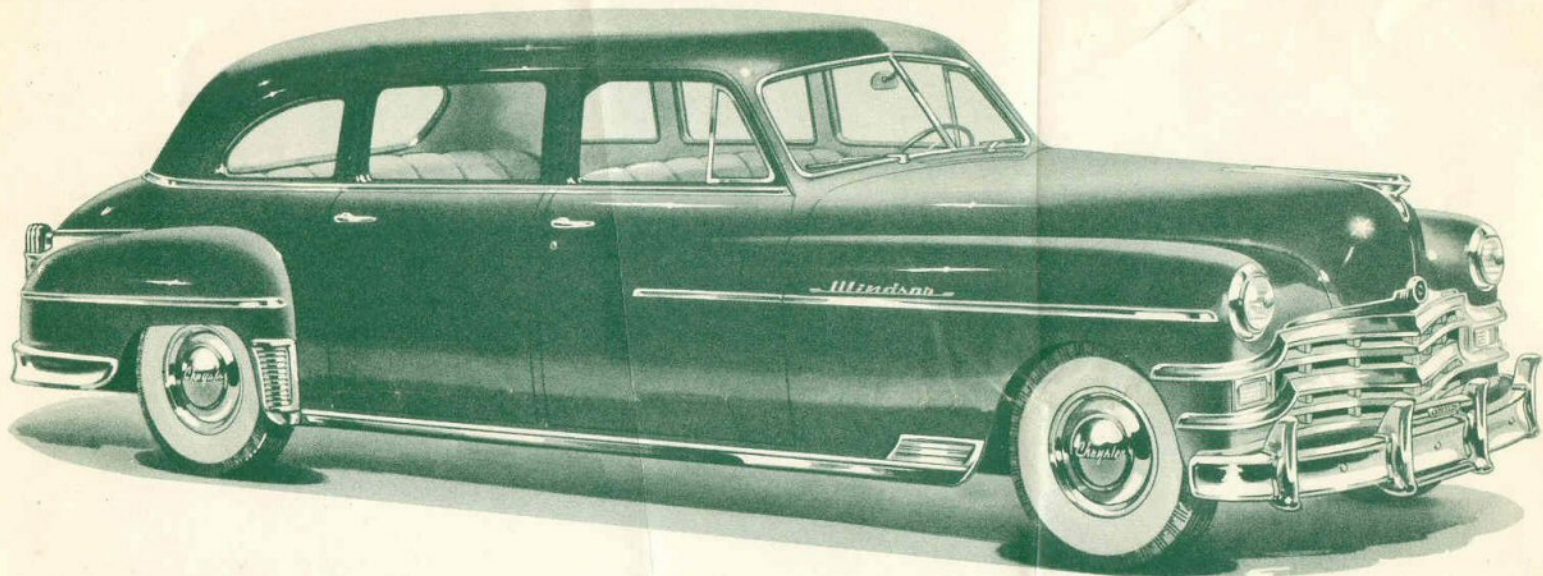
Engineering achievement in motor
presents the finest of a fine line—the
ry Models. Available in a wide selec-
colors and elegant upholstery.



The Silver Anniversary Chrysler Club Coupe

Greater riding comfort in the smart new Chryslers is assured by the four-inch longer wheelbase on all Models. And yet, the overall length of the car is actually shorter, which permits easier parking and handling. The interior of the Club Coupe is spacious—plenty of room for six passengers—and the extra large wide-opening doors make it easy to get in and out of both front and rear seats.

Here, too, is a driving performance that is smoother, quieter, easier. The Chrysler Spitfire Engine with High Compression design is powerful, whisper-soft, responsive, and economical. Prestomatic Fluid Drive Transmission gives you fast acceleration with liquid smoothness. And it shifts gears for you quickly and quietly—and you can drive all day without shifting if you care to.

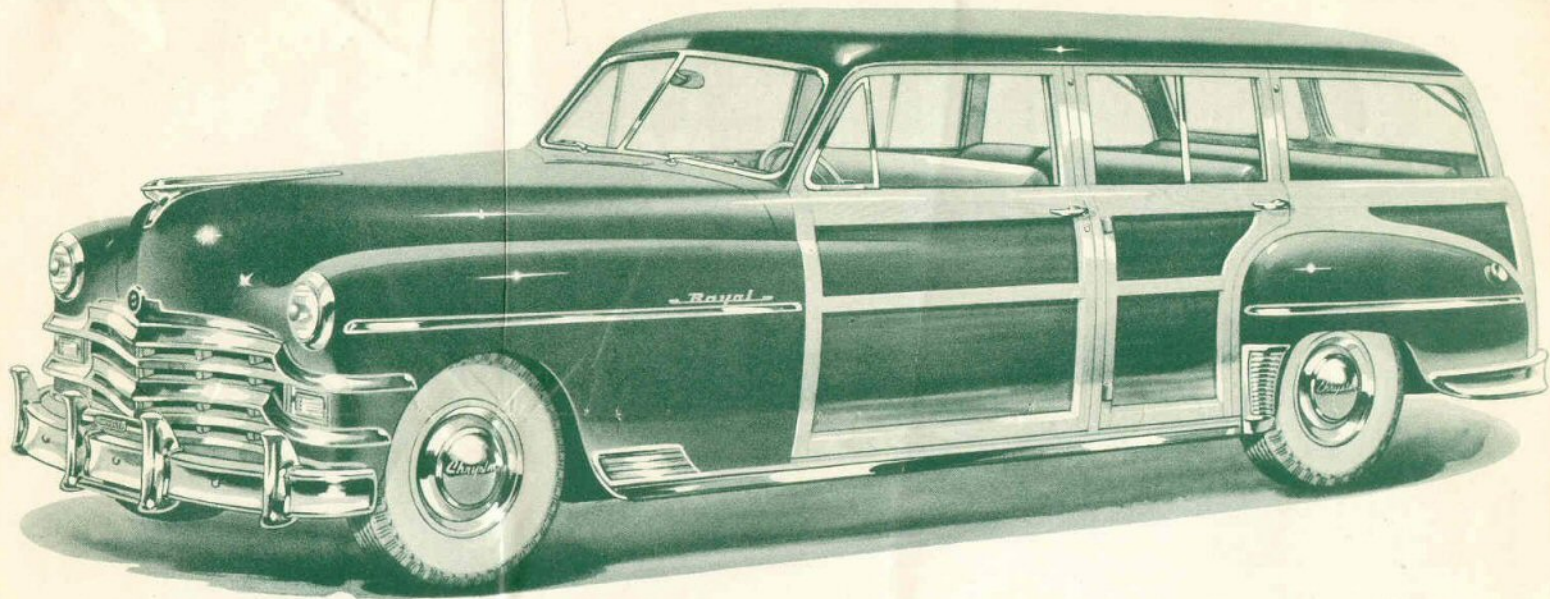


The Silver Anniversary Chrysler Eight Passenger Sedan

Distinction, dignity, and elegance are reflected in this beautiful Chrysler Sedan. The extra long wheelbase provides roominess and comfort for eight passengers. The two auxiliary seats in the rear compartment fold forward, out of the way when not required.

The interior is tastefully styled to create an atmosphere of refinement. The cushions are deep and restful. Recessed armrests on the rear seat,

attractive ashtrays, a folding foot-rest, assist straps are conveniences which provide living-room comfort and luxury for this beautiful model. A chauffeur driven Limousine for eight passengers, with a dividing glass partition between the front and rear compartment, is also available in the Royal and Windsor Models. The Limousine has black leather upholstery in the front compartment.



The Silver Anniversary Chrysler Station Wagon

Style and beauty that will lend distinction to any occasion . . . rugged, sturdy construction that can take long, rough usage without showing wear . . . spacious, roomy interior with three full-size seats that can carry nine passengers in perfect comfort or be converted to haul a truck-load of cargo . . . that's the new Chrysler Station Wagon! The two rear seats can be removed and the tailgate lowered to make

a loading platform nearly 10 feet long. Or with just the third seat removed, there is seating room for six passengers and loading space for a raft of luggage. The seats and interior are upholstered in long-lasting, genuine leather in a wide selection of colors. And the exterior wood body panels are beautifully finished in rugged white ash and mahogany.



Specifications

BODY STYLES—*Royal*: Four-door Sedan, Club Coupe, Eight-passenger Sedan, Limousine, Station Wagon. *Windsor*: Four-door Sedan, Club Coupe, Convertible Coupe, Eight-passenger Sedan, Limousine. *Saratoga*: Four-door Sedan, Club Coupe. *New Yorker*: Four-door Sedan, Club Coupe, Convertible Coupe. *Royal* and *Windsor* models are powered by six-cylinder Chrysler Spitfire Engine. *Saratoga* and *New Yorker* models have eight-cylinder Chrysler Spitfire Engine.

ENGINE—*Spitfire High-Compression Six*: L-head, six cylinders; 3 $\frac{1}{8}$ in. bore and 4 $\frac{1}{2}$ in. stroke with displacement of 250.6 cu. in.; compression ratio, 7.0 to 1; brake horsepower, 116 at 3600 rpm; oil—5 qts. *Spitfire High-Compression Eight*: L-head, eight cylinders; 3 $\frac{3}{4}$ in. bore and 4 $\frac{3}{8}$ in. stroke with displacement of 323.5 cu. in.; compression ratio, 7.25 to 1; brake horsepower, 135 at 3200 rpm; oil—6 qts. Both engines have lightweight aluminum-alloy pistons; exhaust-valve seat inserts; crankcase ventilation; full-pressure lubrication; Floating Power engine mountings; Full-Flow oil Filter mounted directly to engine; Lubricated cylinder walls.

FUEL SYSTEM—Down-draft carburetor with automatic choke and fast-idle control; heavy-duty oil-bath air cleaner and silencer; Oilite fuel filtering element in fuel tank. Gas tank capacity on *Royal* and *Windsor* is 17 gal., and on *Saratoga* and *New Yorker*, 20 gal.

COOLING SYSTEM—Thermostatic temperature control; four-bladed fan on six and five-bladed fan on eight; full-length water-jacket cooling; water pump permanently sealed and lubricated; cooling capacity on six is 17 qts. and on the eight, 21 qts.

TRANSMISSION—*Standard*: Synchronized, carburized, helically-cut gears; ratio: 2.57 to 1, 1.83 to 1, and 1 to 1, with 3.48 to 1 for reverse; lubricant capacity 2 $\frac{3}{4}$ pints. *Prestomatic*: Hydraulically operated with electrical kick-down switch, four forward speeds and reverse, with automatic shifting from first to second and from third to fourth gear; all forward-speed gears are synchronized; ratios: 3.57 to 1, 2.04 to 1, 1.75 to 1, and 1 to 1, with 3.99 to 1 for reverse. Lubricant capacity—3 pints. Fluid Drive is standard equipment on *Saratoga* and *New Yorker*, optional equipment on *Royal* and *Windsor*.

FRAME—Rigid, double-channel welded box type.

FRONT SUSPENSION—Independent front suspension with coil springs. Hydraulic double-acting shock absorbers.

REAR SUSPENSION—Semi-elliptic springs with grooved and tapered leaves; metal spring covers on *Royal* and *Windsor* rear springs; wax-impregnated liners in *Saratoga* and *New Yorker* leaves. Rear "Hydra-Lizer" double-acting shock absorbers are straddle-mounted from rear axle to frame cross member.

SWAY ELIMINATOR—Rubber-bushed sway eliminator in front.

ELECTRICAL SYSTEM—High capacity generators with maximum charging rate of 40 amps for the Six and 45 amps for the Eight; automatic voltage and current control; 17-plate battery, 120-amp capacity on *Royal* and *Windsor*; 19-plate battery, 135-amp capacity on *Saratoga* and *New Yorker*; water-proof ignition; automatic-advance spark

with speed and vacuum control; "Bull's-Eye" Sealed-Beam headlights; back-up light; turn indicators; plastic lens for all accessory lights, two tail-lights, two stop lights.

DRIVE—Hotchkiss type, through rear springs. Hypoid rear axle, semi-floating type, with tapered roller bearings. Rear axle ratios: *Royal* and *Windsor*—3.9 to 1 with standard transmission, 3.73 to 1 with *Prestomatic*. Eight-pass. sedan has 4.1 to 1 standard and 3.91 to 1 with *Prestomatic*. *Saratoga* and *New Yorker*—3.91 to 1 standard and 3.54 to 1 with *Prestomatic*.

BRAKES—Chrysler Safe-Guard hydraulic, internal expanding, with Bonded Brake Linings for longer life. Mechanical hand-brake operates on propeller shaft at rear of transmission. "Vacu-Ease" power booster for brakes is extra-cost equipment on the *Saratoga*, *New Yorker*, 8-pass. Sedan and Limousine.

WHEELS AND TIRES—Chrysler Safety-Rim Wheels, with 4-ply 7.60 x 15 Super-cushion tires on *Royal* and *Windsor* and 4-ply 8.20 x 15 Super-cushion tires on 8-pass. Sedan, Limousine, *Saratoga* and *New Yorker*. White Sidewall Tires and wheel covers optional at extra cost.

WHEELBASE—*Royal* and *Windsor* (except 8-pass. Sedan): 125 $\frac{1}{2}$ in. Eight-pass. Sedan: 139 $\frac{1}{2}$ in. *New Yorker* and *Saratoga*: 131 $\frac{1}{2}$ in.

OVERALL LENGTH—*Royal* and *Windsor* (Sedan, Club Coupe and Convertible—with front license holder): 205 $\frac{3}{4}$ in. *Royal* and *Windsor* 8-pass. Sedan and Limousine: 222 $\frac{3}{4}$ in. *New Yorker* and *Saratoga* (with front license holder): 211 $\frac{3}{4}$ in.

All specifications subject to change without notice.

CHRYSLER SALES DIVISION • DETROIT