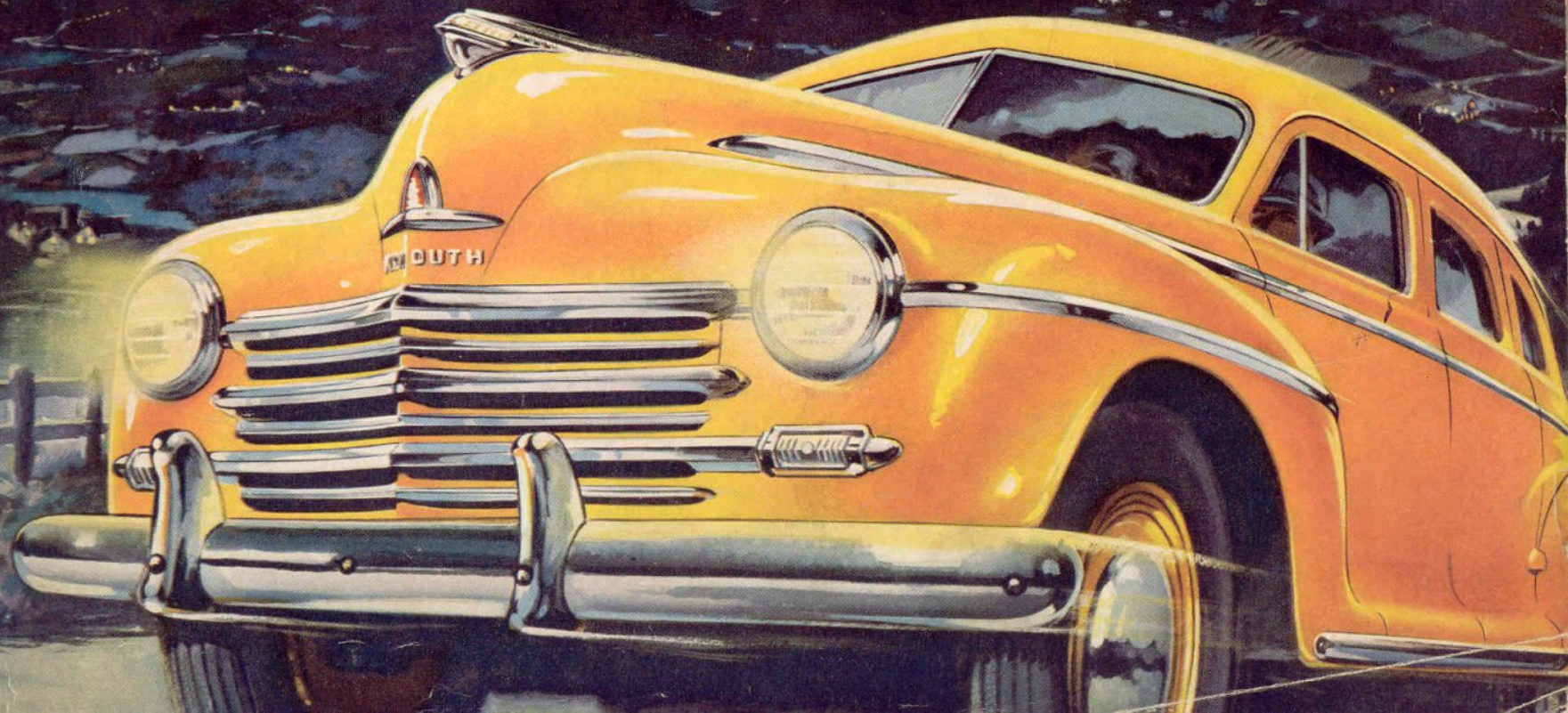
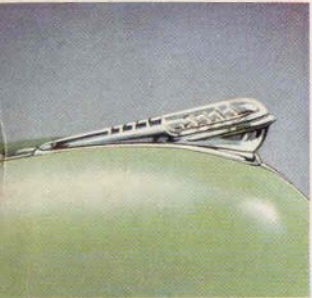


VEL THERE AND BACK IN A

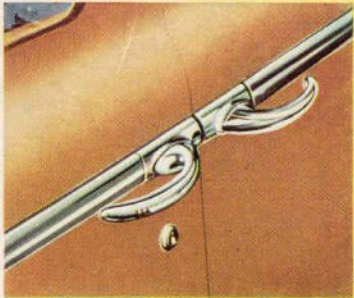
# Plymouth



# T R A V E L T H E R E A N D



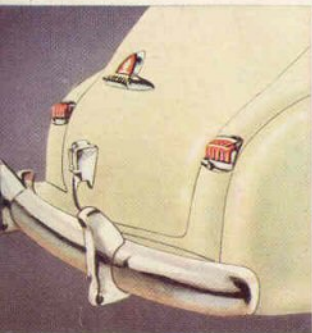
**New Hood Ornament** of chrome and transparent plastic accents the new Plymouth front end.



**Streamlined Door Handles** are curved gracefully inward for safety, and to give a smooth appearance.



**New Car-Width Parking Lights** are skillfully blended into the over-all front-end beauty. Mounted directly under the headlights in the fenders, they show the full Plymouth width to oncoming cars.



**New Stop Light and Tail Lights** add a touch of beauty to the distinctive new rear end styling.



**New Rear Fender Treatment** shields more of the wheel, adding to the smart streamlined appearance.

*in Style*

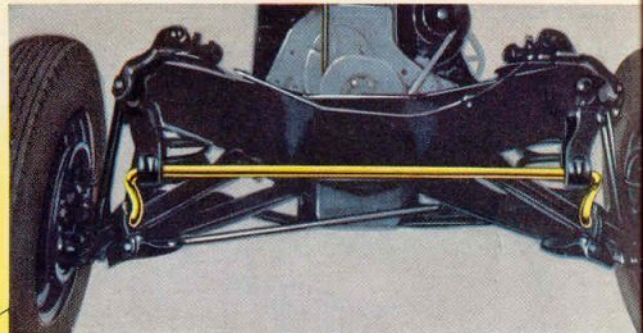
*in Comfort*



**Airplane-Type Shock Absorbers** cushion and control spring action at all four wheels for maximum comfort.



**Multi-Point All-Weather Ventilation** is easily controlled and suits the most exacting demands.



**Front-End Sway Eliminator** reduces body sway and takes the rolling motion out of the car as it rounds corners and curves, resists any twisting tendency in high speed turns, results in a smoother, easier ride on all types of roads.

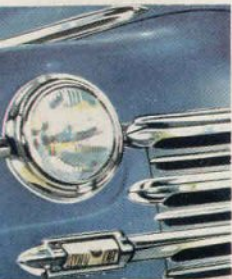


**Adjustable Front Seat** permits moving the comfortable chair-height seat forward or backward as desired.



**Extra Rear Seat Foot Rest** is provided by the mechanism beneath the front seat.

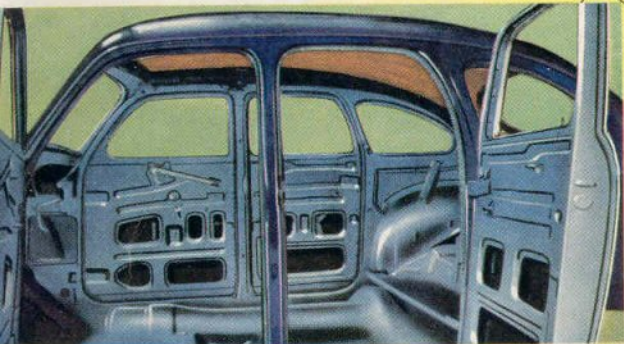
# A C K I N A P L Y M O U T H



**I-Beam Headlights** provide maximum lighting. High beams are foot controlled.



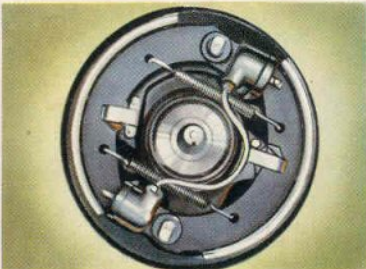
**Concealed Running Boards** are hidden by full-width doors... beauty and safety are scientifically combined.



**Steel Body** gives the new Plymouth great strength. The steel floor, cowl, steel pillars, steel side-panels and one-piece steel top are all welded into one solid, rigid, safe unit. The new Plymouth is built for rugged duty.



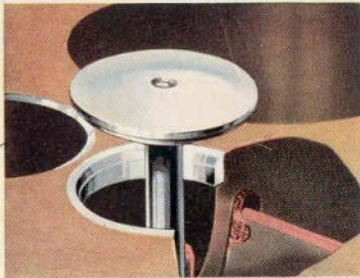
**Rim Wheels** hold tires in position on rim in case of a flat, insure safer stopping.



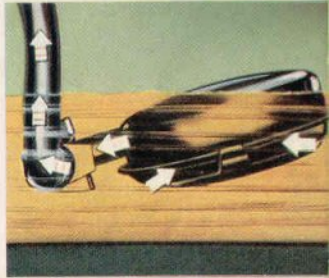
**New Improved Safety Hydraulic Brakes** increase braking efficiency, give easier control, softer pedal action.

*with Safety*

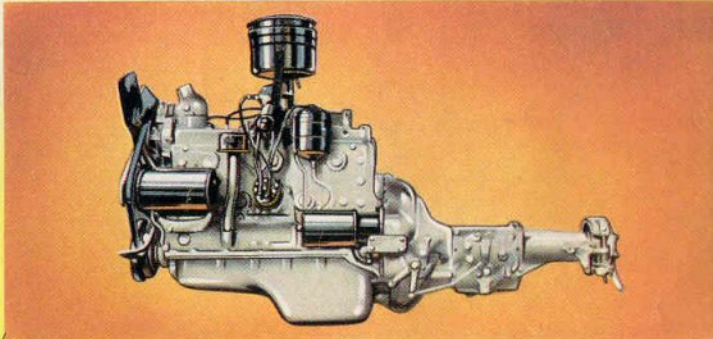
*with Economy*



**Burn-Resistant Exhaust Valve Seat Inserts** help prevent excessive valve seat wear and resulting power loss.



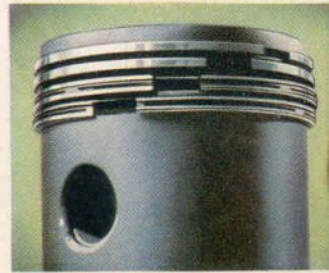
**Floating Type Oil Intake** permits use of only the cleanest oil, keeps sludge or dirt out of oil lines.



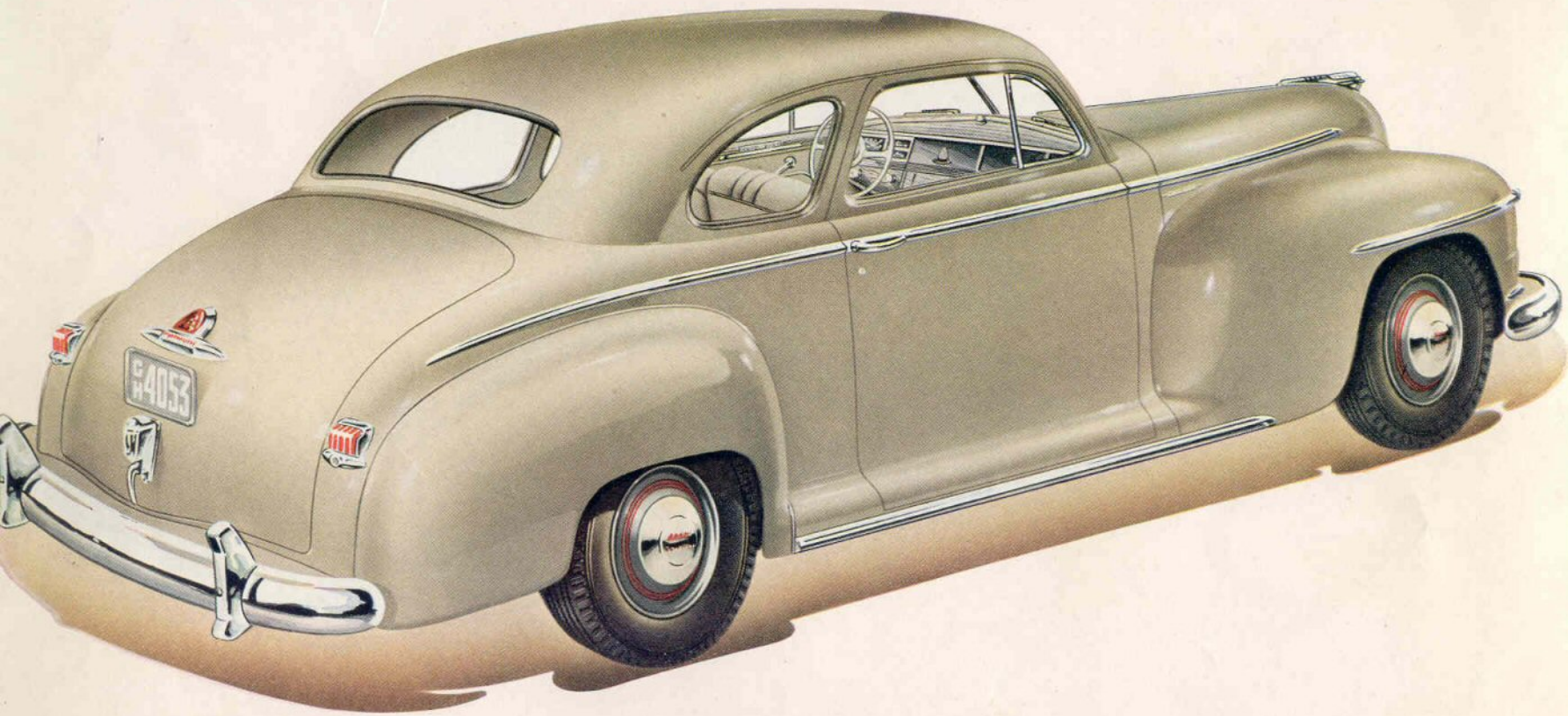
**Plymouth's Six Cylinder, L-Head Engine**, with Floating Power engine mountings, gives unrivaled wide range performance—flexibility in traffic—abundant power for tough going—economy that is a constant source of owner satisfaction.



**New "Micronic Filtration" Oil Filter** constantly filters the oil stream, removing harmful dirt and abrasives.

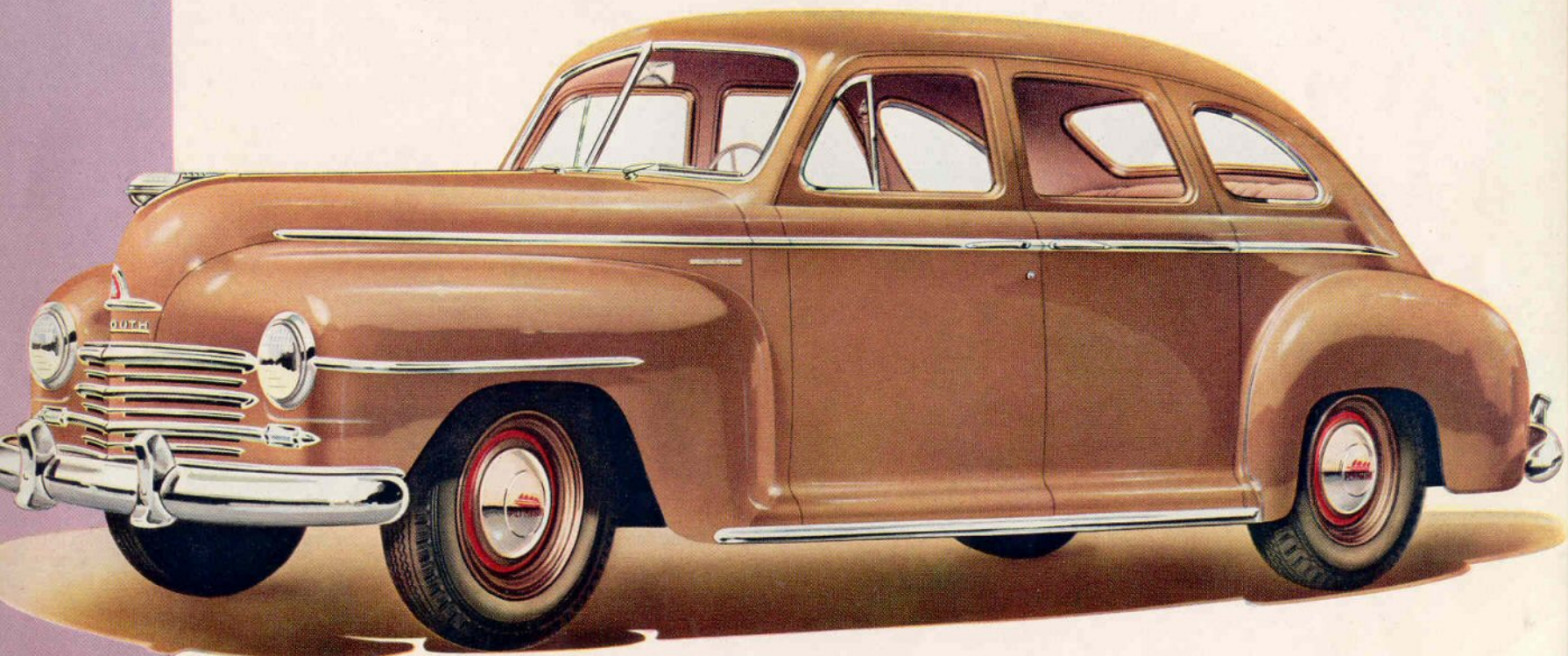


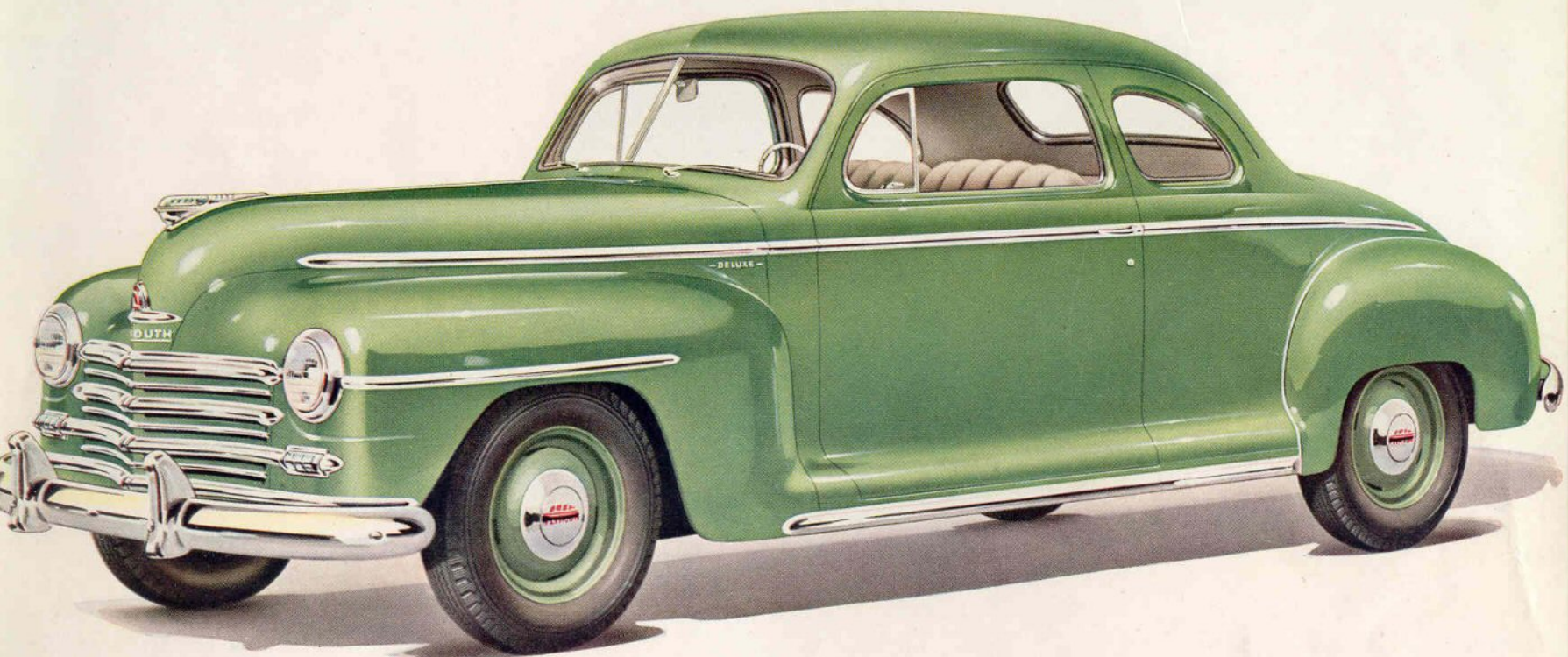
**Scuffproof Aluminum Pistons**, with four rings, reduce bearing load, increase engine efficiency.



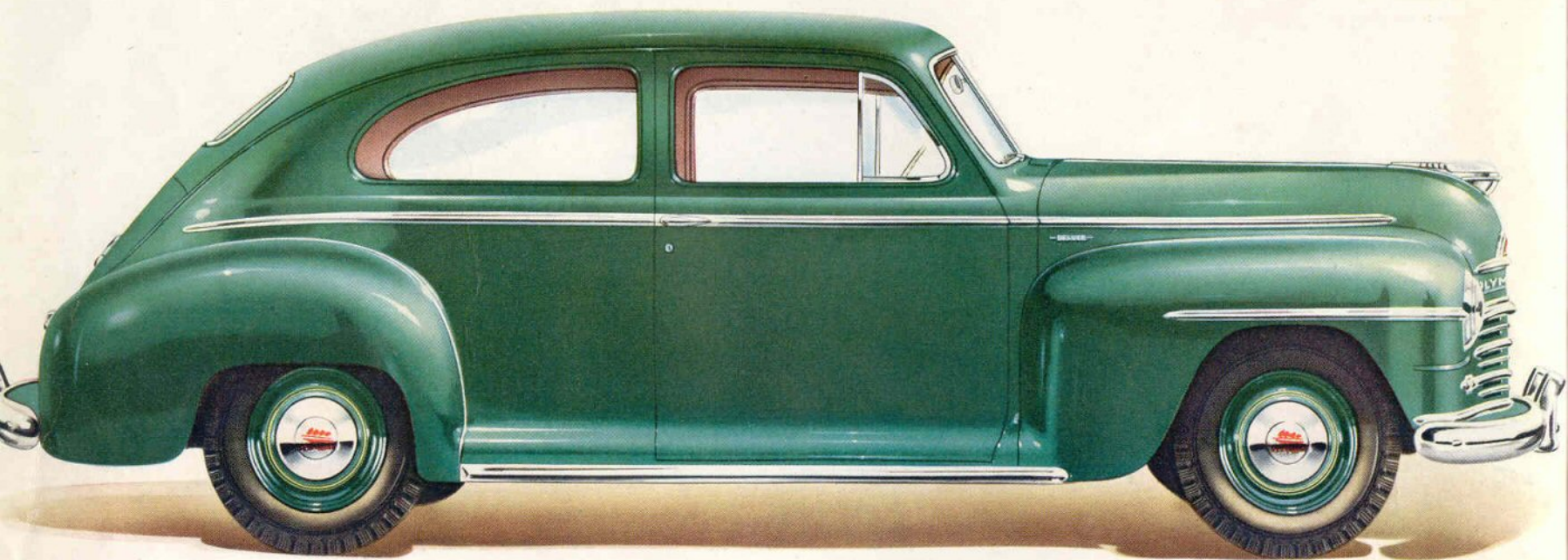
*The* **PLYMOUTH** *De Luxe* **CLUB COUPE**

**THE PLYMOUTH** *Special De Luxe* **4 DOOR SEDAN**

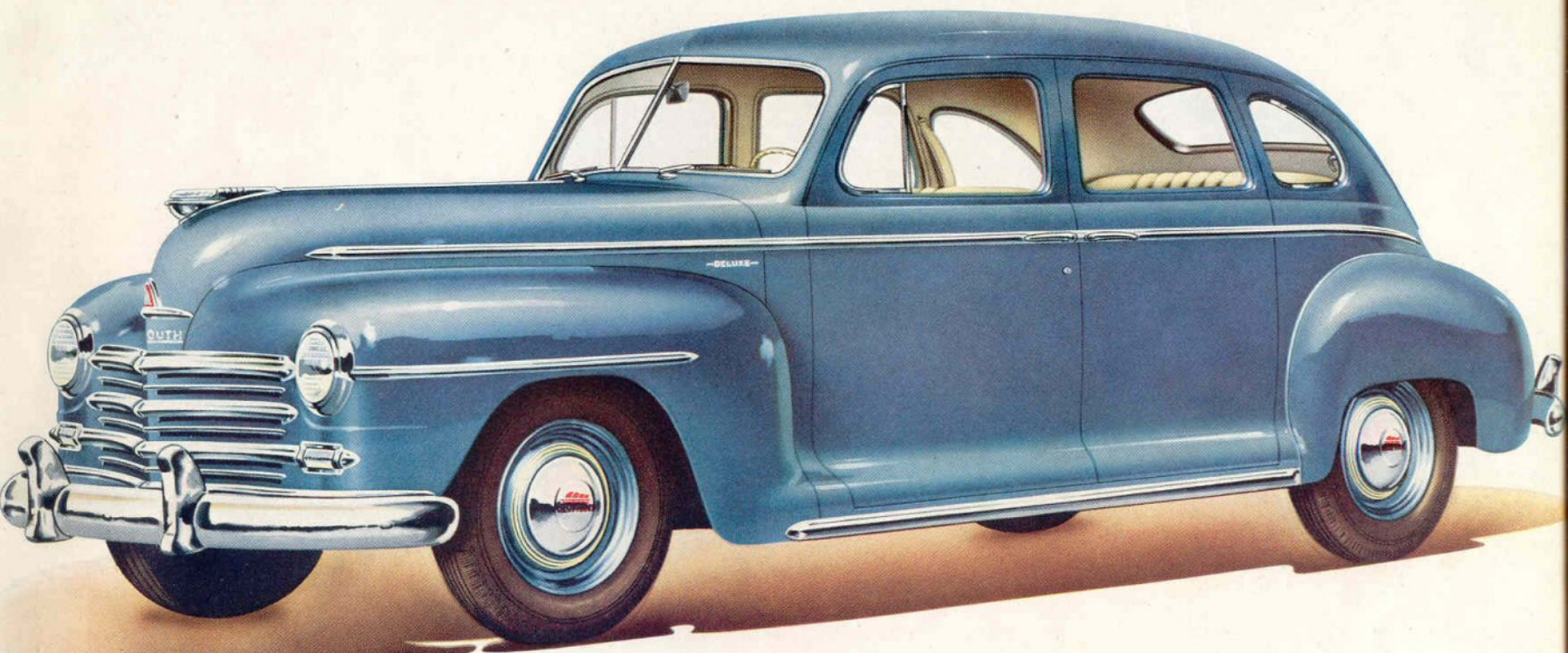




*The* **PLYMOUTH** *DeLuxe* **COUPE**

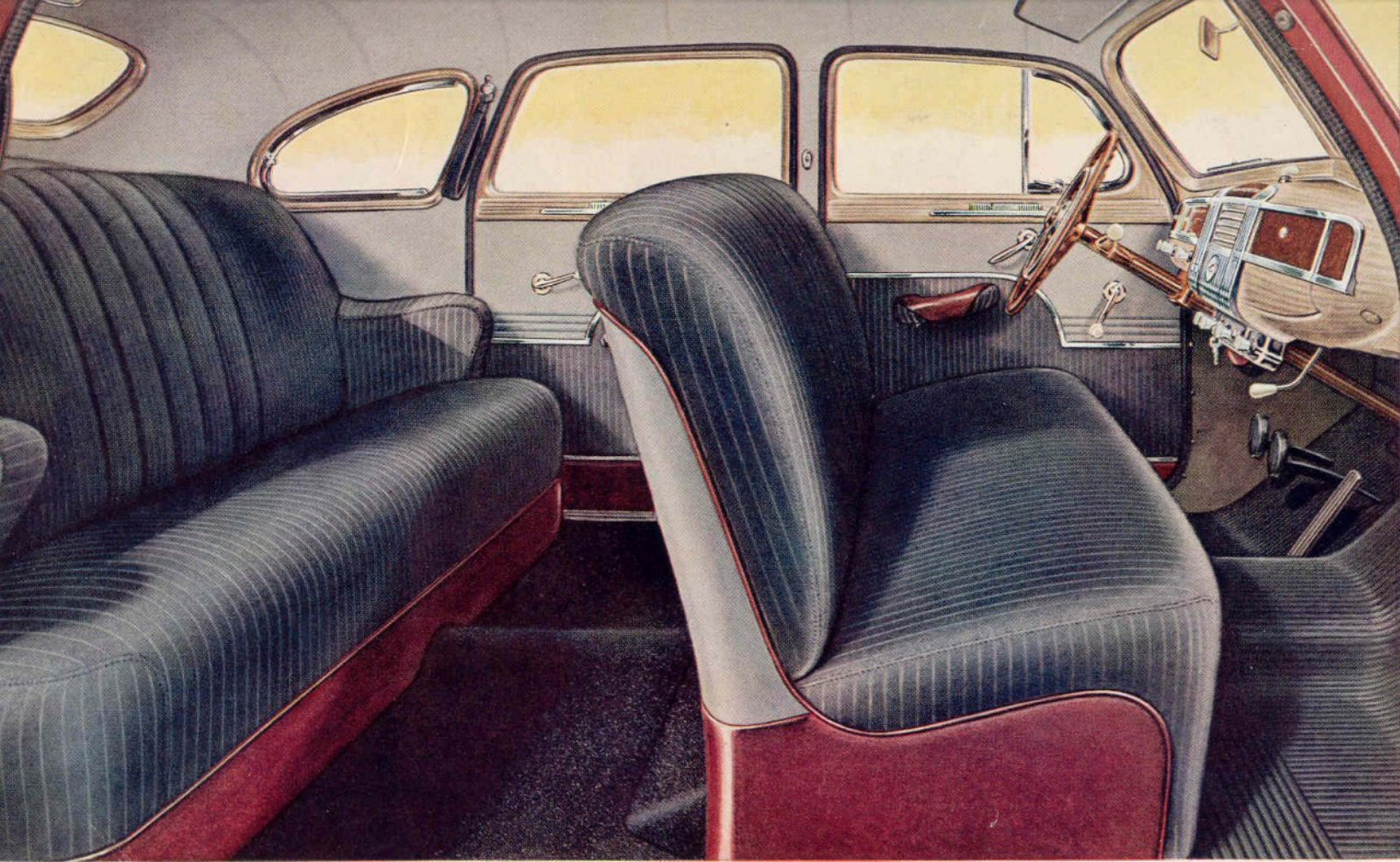


*The* **PLYMOUTH** *DeLuxe* **2 DOOR SEDAN**



*The* **PLYMOUTH** *DeLuxe* **4 DOOR SEDAN**





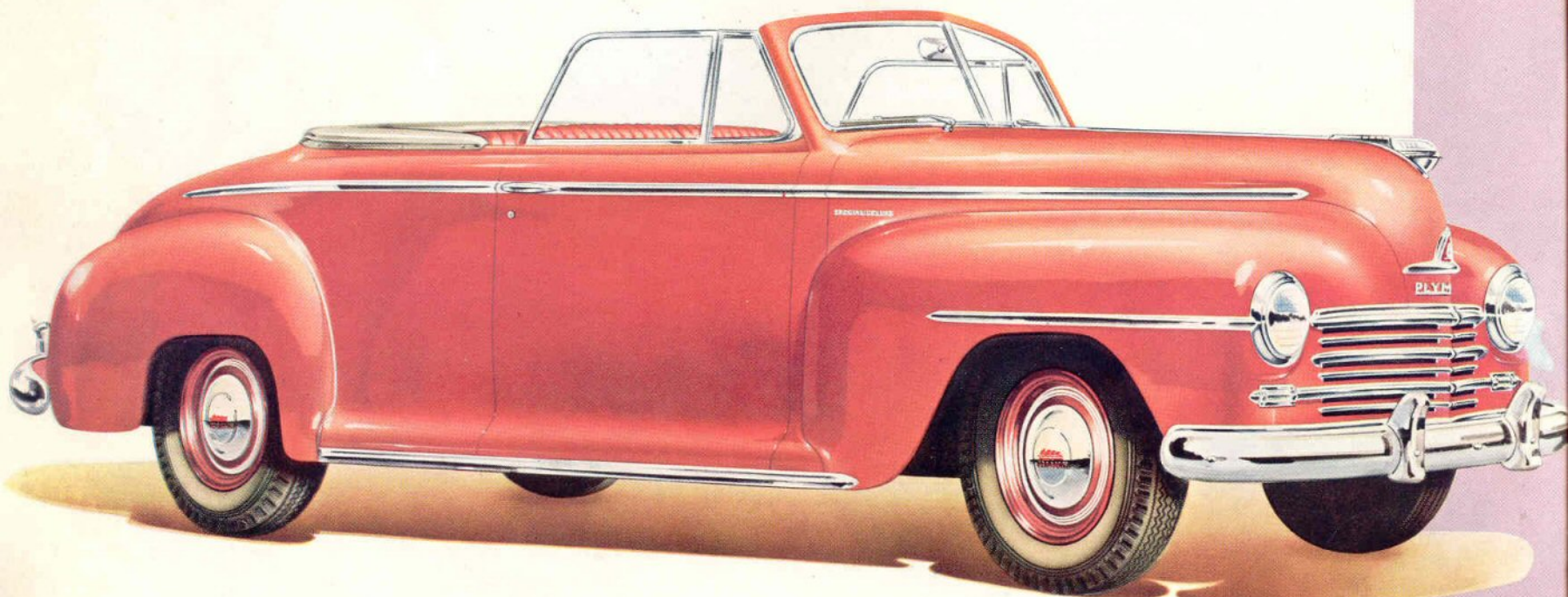
## *Interior*

### **PLYMOUTH SPECIAL DE LUXE 4 DOOR SEDAN**

From the distinctive, modern styling of the wood-grain and chrome instrument panel to the broad package shelf in the rear, the new Plymouth interior is expertly designed for beauty, comfort and durability. Note the door panels with their leather-finished scuff panels, contrasting fabrics, chrome mouldings, plastic knobs on the attractive controls and the gray-tan garnish mouldings. There are leather-finished arm-

rests . . . a built-in, richly carpeted footrest in the rear . . . convenient assist straps and robe cord . . . a new reading lamp with an automatic switch. Spacious, "chair height" seats are covered with soft, durable pile fabric or pencil-striped broadcloth . . . roomy floors have thick carpet in the rear, heavy rubber matting up front. There's long-lived quality styling throughout—with an accent on comfort and convenience.

**THE PLYMOUTH** *Special De Luxe* **CONVERTIBLE COUPE**



**THE PLYMOUTH** *Special De Luxe* **STATION WAGON**



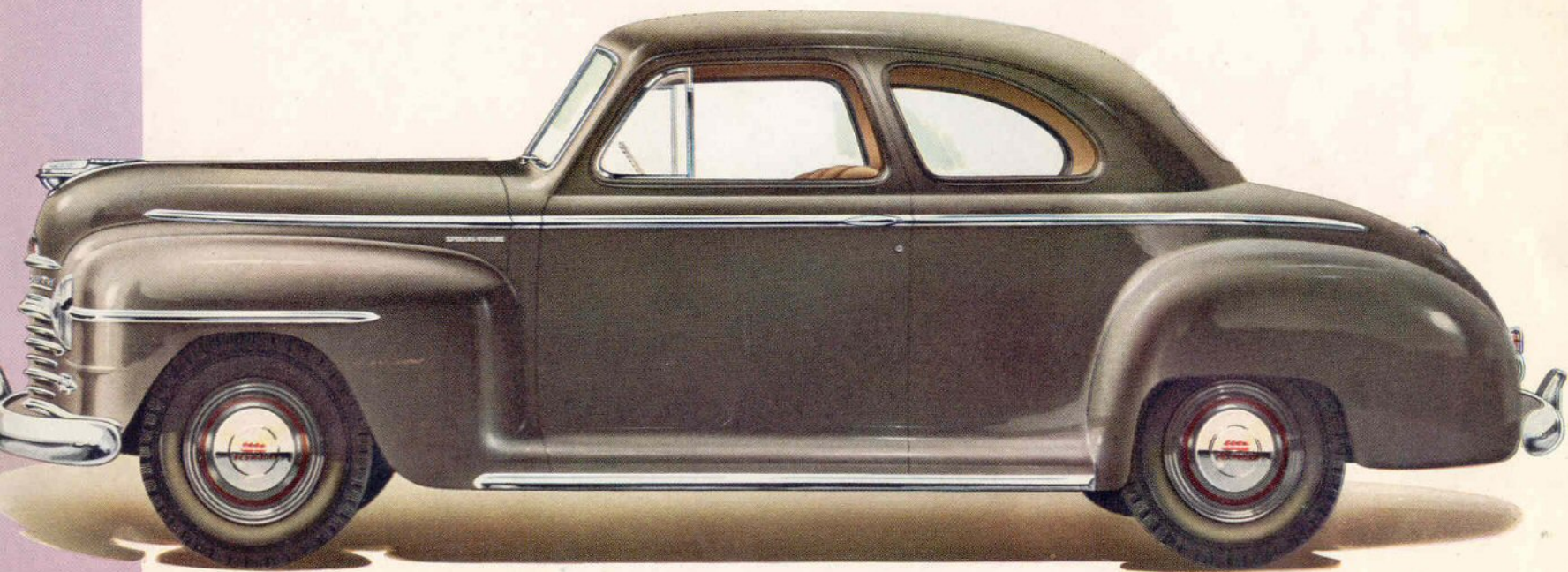
**THE PLYMOUTH**

*Special De Luxe*

**COUPE**



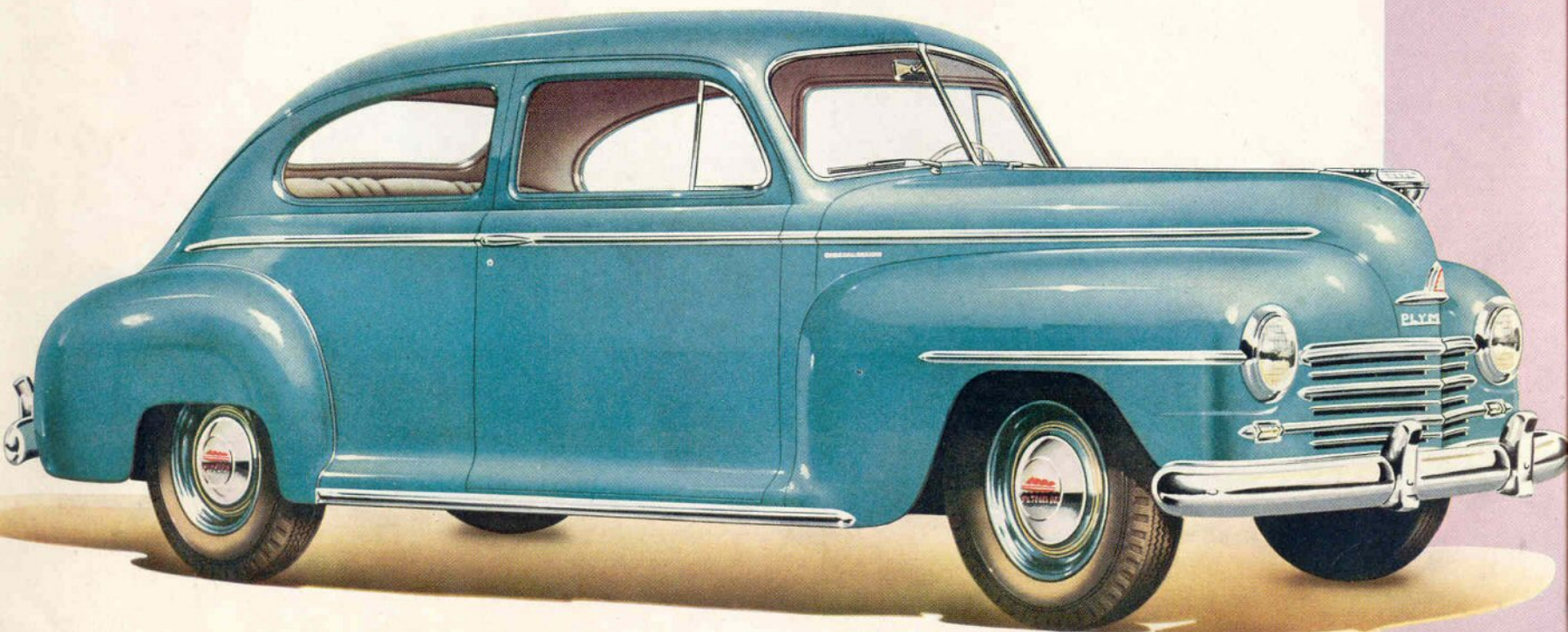
**THE PLYMOUTH** *Special De Luxe* **CLUB COUPE**



**THE PLYMOUTH**

*Special De Luxe*

**2 DOOR SEDAN**



# Engineered **FOR THE YEARS TO COME**

**AIR-COOLED, SOFT-ACTION CLUTCH**  
Reduces heat, gives longer life.

**AIRPLANE-TYPE SHOCK ABSORBERS**  
Cushion the ride, smother bumps.

**CALIBRATED KNOCK-FREE IGNITION**  
Eliminates engine "ping".

**CHAIN-DRIVEN CAMSHAFT**  
Quieter operation, longer life.

**FLOATING POWER ENGINE MOUNTINGS**  
Smothers engine vibration.

**FLOATING-TYPE OIL INTAKE**  
Selects only the cleanest oil.

**FOUR RINGS PER PISTON**  
Economy of gas, oil. Finer performance.

**FULL-LENGTH WATER JACKETS**  
Uniform cooling for greater economy.

**FULL-PRESSURE ENGINE LUBRICATION**  
Positive lubrication at all speeds.

**FRONT COIL SPRINGS**  
Level rough roads, make riding smoother.

**"GEROTOR" OIL PUMP**  
Full pressure assured at all engine speeds.

**HOTCHKISS DRIVE**  
Less unsprung weight, smoother getaway.

**HYPOID REAR AXLE**  
Quieter, stronger, longer-lived.

**LARGE CAPACITY EXHAUST SYSTEM**  
Quieter, less back-pressure, more efficient.

**METAL SPRING COVERS**  
Protect springs from dust and dirt.

**95 AMPERE-HOUR BATTERY**  
Ample current for every need.

**OIL BATH AIR CLEANER**  
Removes dust from air entering carburetor.

**OILITE BEARINGS**  
Self-lubricating for longer life.

**OILITE "SCREEN UNIT" GAS FILTER**  
Filters out even the finest dirt particles.

**PRECISION-TYPE CONNECTING ROD BEARINGS**  
Servicing is simpler, less expensive.

**RIGID CRANKSHAFT WITH VIBRATION DAMPENER**  
Amazingly smooth engine performance.

**ROLLER BEARING UNIVERSAL JOINTS**  
Less vibration. Reduce wear, last longer.

**RUBBER MOUNTED STEERING MECHANISM**  
Shockproof, easy steering.

**RUBBER-POISE BODY MOUNTINGS**  
Absorb road noise and vibrations.

**IMPROVED SAFETY HYDRAULIC BRAKES**  
Braking efficiency increased by 32%.

**SAFETY-RIM WHEELS**  
Safeguard against "blowout" hazards.

**SCUFFPROOF LIGHTWEIGHT ALUMINUM PISTONS**  
Reduce bearing load, increase efficiency.

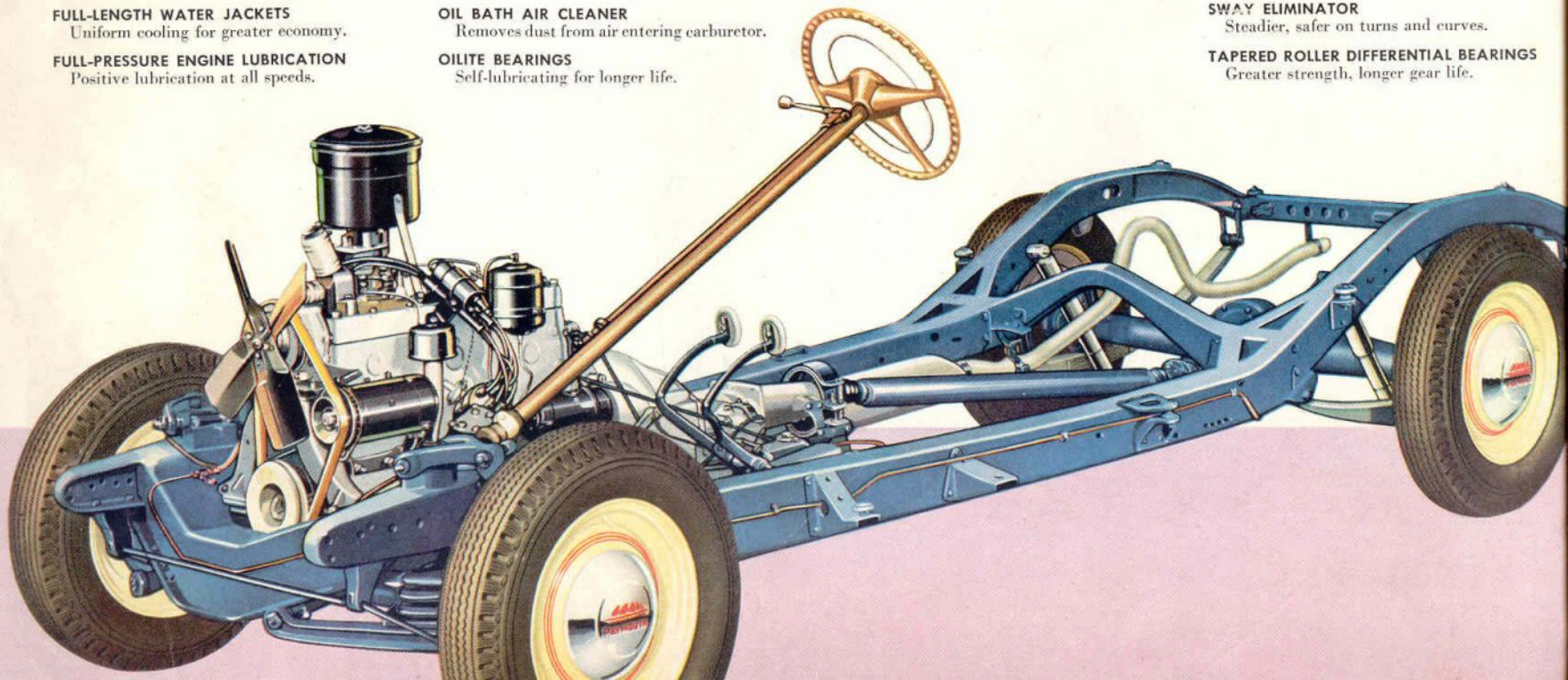
**STARTER**  
Actuated by starter button on instrument panel.

**SUPERFINISH**  
Less wear on vital working parts.

**SUPER-RIGID DOUBLE CHANNEL FRAME**  
Stronger, steadier, more rigid.

**SWAY ELIMINATOR**  
Steadier, safer on turns and curves.

**TAPERED ROLLER DIFFERENTIAL BEARINGS**  
Greater strength, longer gear life.



# S P E C I F I C A T I O N S

**ENGINE**—Six Cylinder "L" Head. Aluminum alloy pistons—95 horsepower at 3600 R.P.M. Bore and stroke  $3\frac{1}{4}$  x  $4\frac{3}{8}$  inches. Piston displacement 217.8 cu. in. Taxable horsepower 25.35.

**WHEELBASE**—117 inches over-all length— $196\frac{3}{4}$  inch tread—57 inch front and  $59\frac{1}{8}$  inch rear—over-all width  $73\frac{3}{8}$  inches. Station Wagon, 77 inches.

**BRAKES**—Four-wheel hydraulic, internal expanding—Twin cylinder type in front—10 inch drums—brake lining contact area 158 sq. in. Parking brake controlled by hand lever, operates independently of all others—has  $33\frac{3}{8}$  sq. in. braking area.

**LUBRICATION**—Full pressure to main, lower connecting rods and camshaft bearings—Floating-type oil intake. Crankcase capacity, 5 quarts.

**CLUTCH**—Single plate, dry, ventilated. Total contact area 77.8 sq. in. Facing of molded woven asbestos.

**PROPELLER SHAFT**—Tubular,  $2\frac{3}{4}$  inch diameter. Two roller bearing universal joints.

**TIRES**—6.00 x 16, mounted on steel disc drop center "E" Flange Safety Wheels. Rim width, 4 inches.

**CAMSHAFT**—Silent chain driven.

**FUEL SYSTEM**—17 gallon gasoline tank with Oilite self-cleaning filter in tank. Down-draft

carburetor, heavy duty oil bath air cleaner. Manual Choke control.

**TRANSMISSION**—Standard three speeds forward and reverse. Gearshift, remote control manual operation on steering column under wheel. Synchro-silent all helical gears with synchronous meshing second and third gears. Lubricant capacity  $2\frac{3}{4}$  pints.

**STEERING**—Worm and Roller type. Wheel diameter 17 inches.

**SPRINGS**—Front, Amola Coil Steel indepently sprung. Rear, Semi-elliptic Amola Steel  $53\frac{3}{8}$  inches long and  $1\frac{3}{4}$  inches wide with metal covers.

**SHOCK ABSORBERS**—Hydraulic, double-acting, telescopic with one inch diameter piston.

**REAR AXLE**—Silent Hypoid Semi-floating with Amola and Nickel Molybdenum steel Gears. Gear ratio 3.9 to 1 Standard, and 4.1 to 1 on Station Wagon. Lubricant capacity  $3\frac{1}{4}$  pints.

**CRANKSHAFT**—Four removable precision-type main bearings.

**BATTERY**—6 Volt, 15 plate, 95 ampere-hour capacity.

**COOLING**—Pump actuated circulation Oilite Bronze bearing front and rear of pump. Full-length water jacket, four blade, 17-inch fan. Cooling system water capacity is  $3\frac{3}{4}$  gallons.

*All specifications subject to change without notice.*

